

ALE Implementation (step-by-step guide)

ALE CONFIGURATION:

SALE

- Define Logical System
- Assign Client to Logical System
- Define Target Systems for RFC Calls
- Maintain Distribution Model and Distribute Views
- Maintain Partner Profile Manually
- Generate Partner Profiles
- Check Technical Consistency
- Master Data Distribution

IDOC ADMINISTRATION

WE05 - IDoc Lists

WE02 - Display IDoc

DISPLAY STATUS

WE20 - Partner Profile

WE21 - Port Definition

SM59 - RFC Destination

BD71 - Distribute Model

DEVELOPMENT

WE31 - IDoc Segments

WE30 - IDoc Types

WE81 - Message Types

WE82 - IDoc Type / Message

WE57 - Message/Application Object

WE34 - IDoc Styles

WE32 - IDoc Views

CONTROL:

WE41 - Outbound Process Code

WE42 - Inbound Process Code

WE43 - Display Status Record

WE64 - Process Codes

Outbound & inbound operations

BD10 Send Material

BD11 Get Material

BD12 Send customer

BD13 Get customer

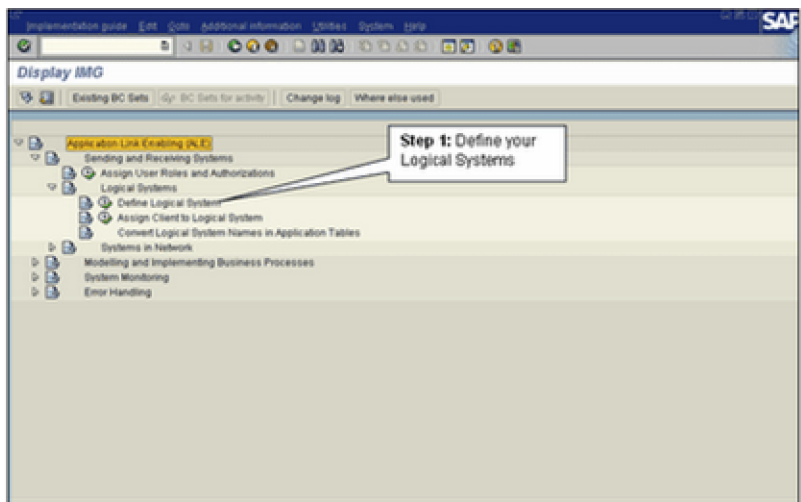
BD16 Send Cost Center

BD17 Get Cost Center

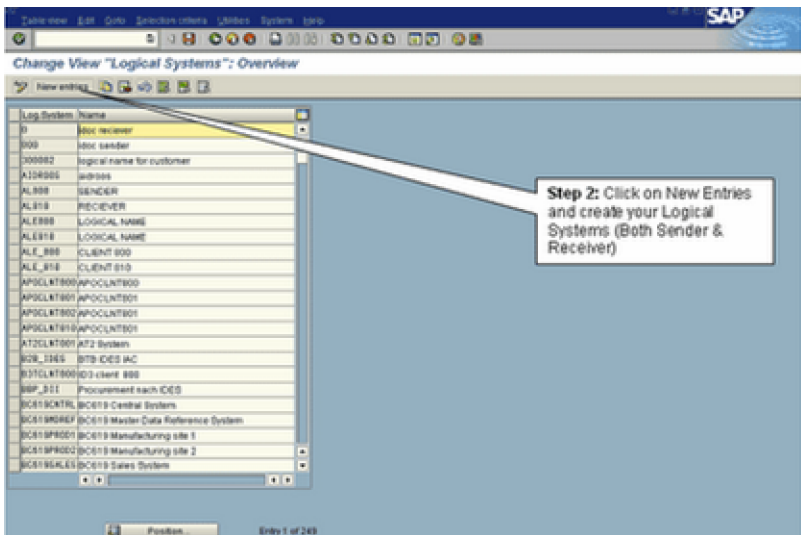
BD18 Send General Ledger Account
BD19 Get General Ledger Account

Step-by-step guide with screenshots:

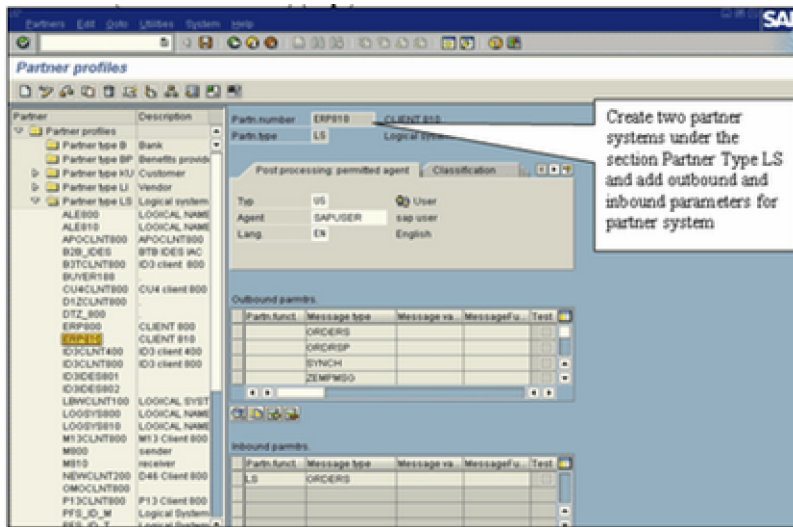
Tcode: SALE (ALE Implementation Guide)
Adding your Logical Systems (Step 1)



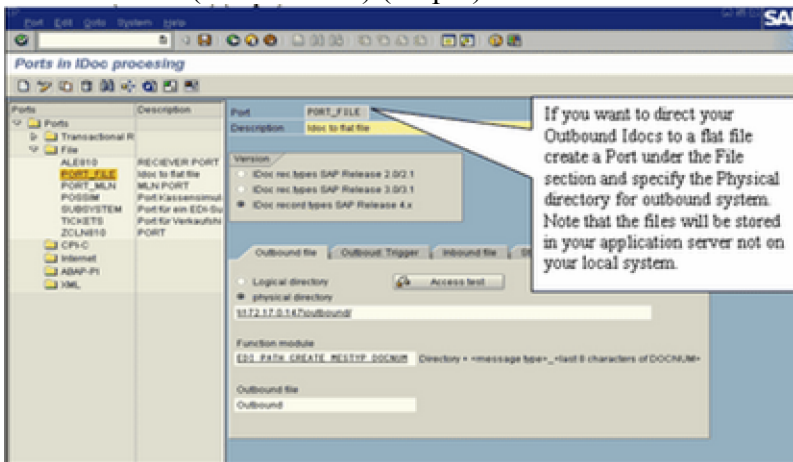
Creating your Logical Systems (Step 2)



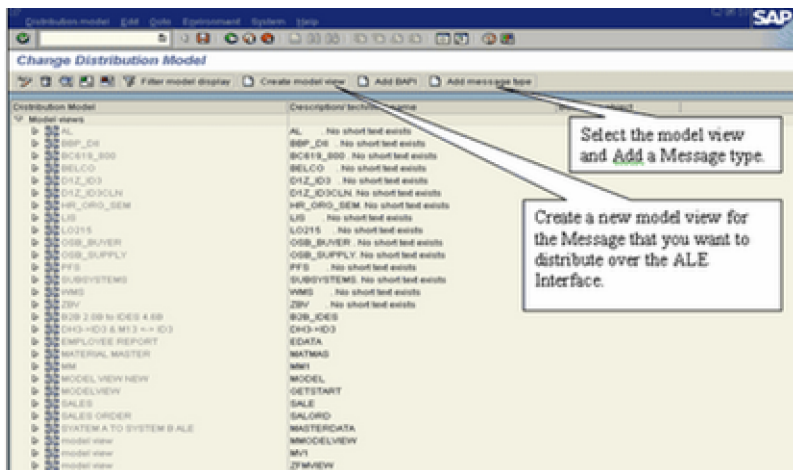
Assigning Clients to Logical Systems (Step 3)



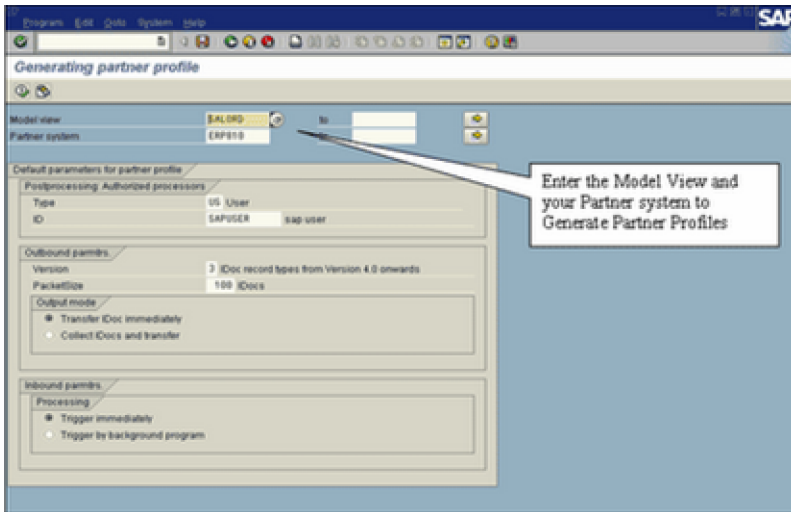
Tcode: WE21 (Define Ports) (Step 6)



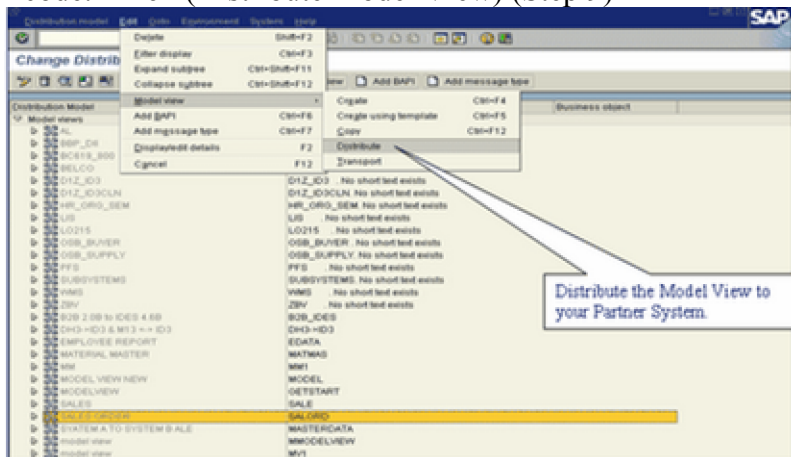
Tcode: BD64 (Define and Change Distribution Model) (Step 7)



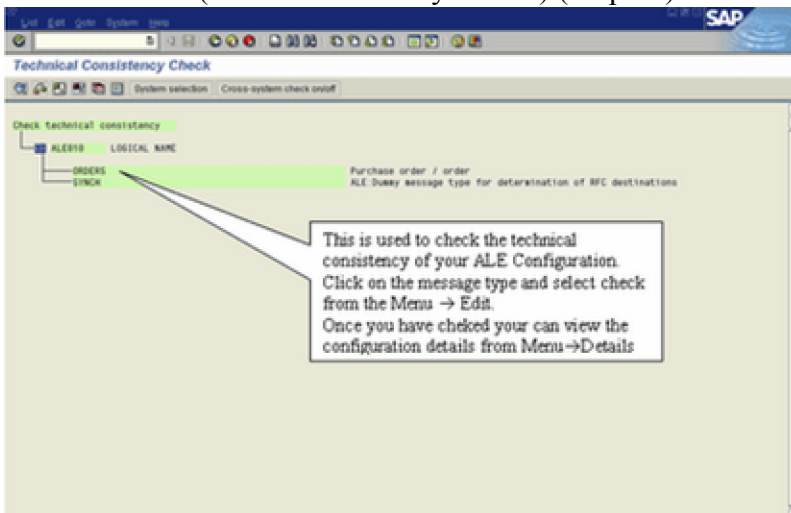
Tcode: BD82 (Generate Partner Profiles) (Step 8)



Tcode: BD64 (Distribute Model View) (Step 9)

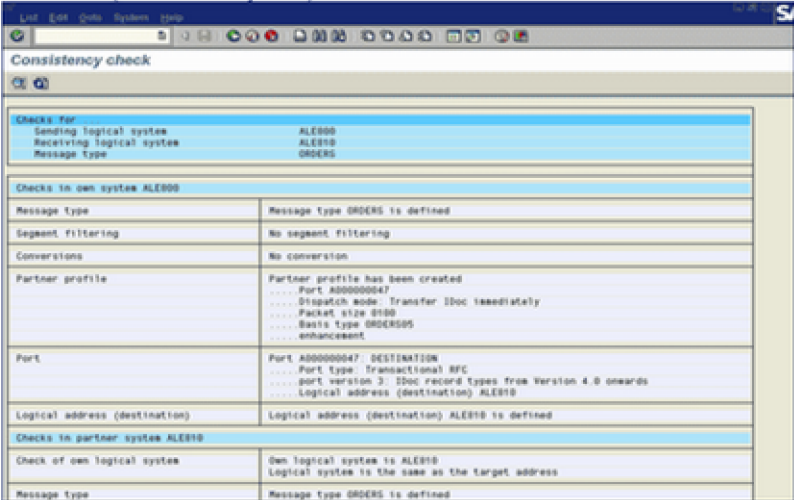


Tcode: BDM5 (Check consistency details) (Step 10)



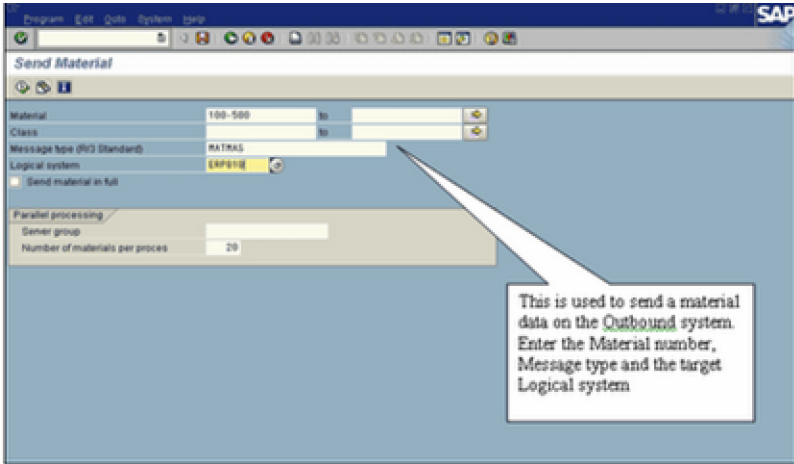
Tcode: BDM5 (Check consistency details)

Tcode: BDM5 (Check consistency details)

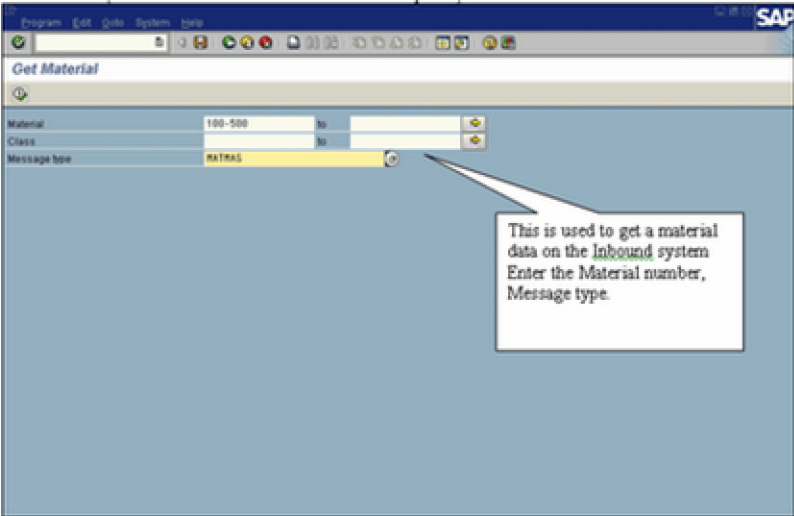


Tcode: BD10 (Send

material master on the Outbound system) (Step 11)

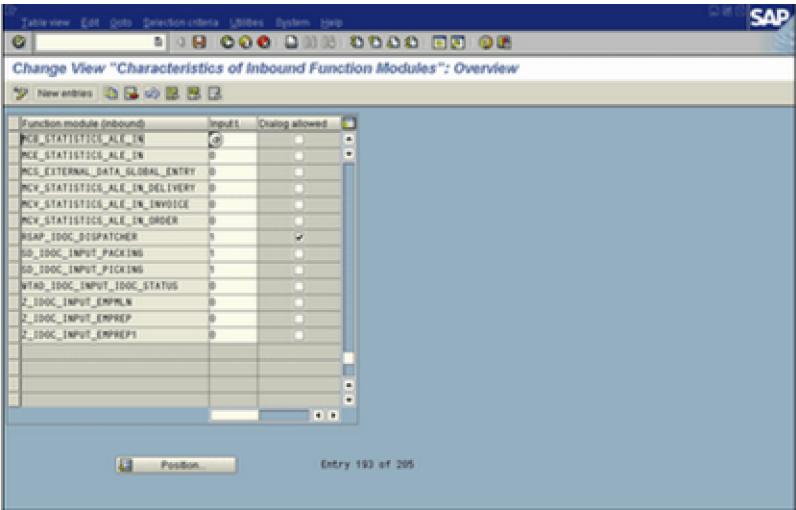


Tcode: BD11 (Get the Material Master on the Inbound system)

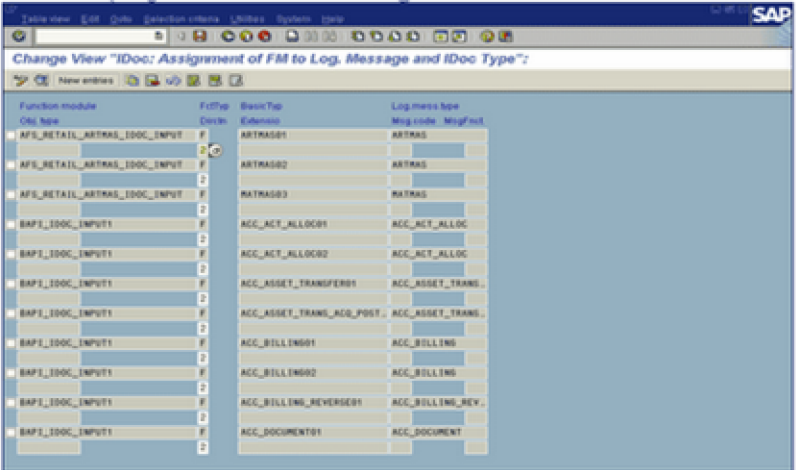


Tcode: BD51 (Define

Inbound Function Module)



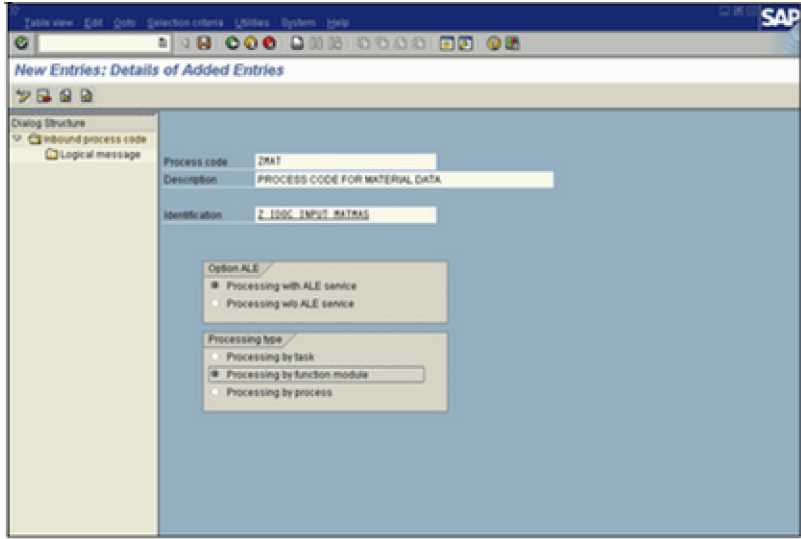
Tcode: WE57 (Assignment of Function Module to Log)



Process Code)

Tcode: WE42 (Creating a new Process Code and assigning function module)

Tcode: WE42 (Define



Tcode: WE02 (Display IDOC status)

SAP R/3

Selected IDocs

IDoc number	Segm.	Stat.	Stat.	Partner	Basic Type	Date created	Time	Mess. N.	Direction	Port
000000000491815	15	51	000	LSF_QZ800	ORDERSD1	06/05/2006	12:26:18	ORCRSP	Inbox	SAPD46
000000000491816	15	51	000	LSF_QZ800	ORDERSD1	06/05/2006	13:58:07	ORCRSP	Inbox	SAPD46
000000000491817	15	51	000	LSF_QZ800	ORDERSD1	06/05/2006	13:12:04	ORCRSP	Inbox	SAPD46
000000000491818	15	03	000	LSF_ERP10	ORDERSD5	06/05/2006	13:28:45	ORCRSP	Outbox	A0000000
000000000491819	2	03	000	LSF_ZSAMF10	ZMLN	06/05/2006	18:34:14	ZSAMF	Outbox	A0000000
000000000491820	2	03	000	LSF_ZSAMF10	ZMLN	06/05/2006	18:42:03	ZSAMF	Outbox	PORT_ML
000000000491821	35	03	000	LSF_ERP10	ORDERSD5	06/05/2006	17:37:09	ORCRSP	Outbox	A0000000
000000000491822	35	03	000	LSF_ERP10	ORDERSD5	06/05/2006	18:01:51	ORCRSP	Outbox	PORT_FL
000000000491823	35	51	000	LSF_ERP000	ORDERSD5	06/05/2006	18:04:36	ORCRSP	Inbox	SAPD46
000000000491824	35	51	000	LSF_ERP000	ORDERSD5	06/05/2006	18:07:19	ORCRSP	Inbox	SAPD46
000000000491825	35	51	000	LSF_ERP000	ORDERSD5	06/05/2006	18:09:08	ORCRSP	Inbox	SAPD46
000000000491826	35	42	000	LSF_ERP000	ORDERSD5	06/05/2006	18:17:55	ORCRSP	Inbox	SAPD46
000000000491827	35	51	000	LSF_ERP000	ORDERSD5	06/05/2006	18:18:44	ORCRSP	Inbox	SAPD46
000000000491828	35	51	000	LSF_ERP000	ORDERSD5	06/05/2006	18:23:54	ORCRSP	Inbox	SAPD46
000000000491829	35	03	000	LSF_ERP10	ORDERSD5	06/05/2006	18:30:07	ORCRSP	Outbox	PORT_FL
000000000491830	35	53	000	LSF_ERP000	ORDERSD5	06/06/2006	10:10:57	ORCRSP	Inbox	SAPD46
000000000491831	32	03	000	LSF_ERP10	ORDERSD5	06/06/2006	10:21:39	ORCRSP	Outbox	PORT_FL
000000000491832	32	51	000	LSF_ERP000	ORDERSD5	06/06/2006	10:24:09	ORCRSP	Inbox	SAPD46
000000000491833	32	42	000	LSF_ERP000	ORDERSD5	06/06/2006	10:26:28	ORCRSP	Inbox	SAPD46
000000000491834	32	43	000	LSF_ERP000	ORDERSD5	06/06/2006	10:27:36	ORCRSP	Inbox	SAPD46
000000000491835	32	03	000	LSF_ERP10	ORDERSD5	06/06/2006	10:31:25	ORCRSP	Outbox	PORT_FL
000000000491836	32	43	000	LSF_ERP000	ORDERSD5	06/06/2006	10:35:37	ORCRSP	Inbox	SAPD46

IDOC Creation Steps

To Create Idoc we need to follow these steps:

Create Segment (WE31)
Create Idoc Type (WE30)
Create Message Type (WE81)
Assign Idoc Type to Message Type (WE82)

Creating a Segment
Go to transaction code WE31
Enter the name for your segment type and click on the Create icon
Type the short text
Enter the variable names and data elements
Save it and go back
Go to Edit -> Set Release
Follow steps to create more number of segments

Create IDOC Type
Go to transaction code WE30
Enter the Object Name, select Basic type and click Create icon
Select the create new option and enter a description for your basic IDOC type and press enter
Select the IDOC Name and click Create icon
The system prompts us to enter a segment type and its attributes

Choose the appropriate values and press Enter
The system transfers the name of the segment type to the IDOC editor.
Follow these steps to add more number of segments to Parent or as Parent-child relation
Save it and go back
Go to Edit -> Set release

Create Message Type
Go to transaction code WE81
Change the details from Display mode to Change mode
After selection, the system will give this message "The table is cross-client (see Help for further info)". Press Enter
Click New Entries to create new Message Type
Fill details
Save it and go back

Assign Message Type to IDoc Type
Go to transaction code WE82
Change the details from Display mode to Change mode
After selection, the system will give this message "The table is cross-client (see Help for further info)". Press Enter.
Click New Entries to create new Message Type.
Fill details
Save it and go back