



Society for Growing Australian Plants Cairns Branch

Newsletter 158

April 2016

In this issue...

EXCURSION REPORT - SGAP
CAIRNS ANNUAL GENERAL
MEETING AND GARDENS
RAMBLE.....1
NEWS.....2
 MICK JACKES.....2
 NEW MANGROVES.....2
THE GREEN ARROW WALK -
A NEW TRACK ON THE
WHITFIELD RANGE.....3
INVITATION - YABBA
CAPRICORN
ROCKHAMPTON, OCTOBER
2016.....4
WET TROPICS WILD
EXPOSURE ACTIVITIES.....6
WHAT'S HAPPENING?.....7
 CAIRNS BRANCH7
 TOWNSVILLE BRANCH.....7
 TABLELANDS BRANCH.....7



EXCURSION REPORT - SGAP CAIRNS ANNUAL GENERAL MEETING AND GARDENS RAMBLE

Don Lawie

It was like old times, with a very good attendance for our 2016 AGM. Tony Roberts was welcomed to the Chair and we hope for an interesting year. Pauline continues as Vice President, with Coralie as Honourable Secretary, Val Carnie as Treasurer and Stuart continuing with his superlative Newsletter .



Tony is keen to re-introduce Guest Speakers and Stuart has resurrected the meeting raffle, which was a handy fundraiser in the past and gave members a purpose for some minor propagation practice.

The Visitor Centre conference room was a very welcome meeting place, with the outside temperature well over 30 degrees and the sun shining fiercely outside our airconditioned comfort zone.

Business, lunch and social chat over, Tony invited us to accompany him on a ramble around the Gardens. Cairns Botanic Gardens are world quality as a Tropical Botanic Garden. They were featured as representative



Musa jackeyi fruits and flowers



Closeup of fruits - not your regular banana!

of Queensland in a recent "Wellness" magazine, and deservedly so.

First up was a flowering/fruited *Musa jackeyi*: a rarely encountered native banana from north of the Daintree. In the Babinda/East Russell area *Musa banksii* are common wild plants. They look very similar to the hybrid bananas of commerce except that the bunches produce fruit that are long and skinny and filled with so much seed that they are hardly edible. *Jackeyi* fruit are similar, with the difference that the inflorescence and bunch are vertical. It really is, hard to believe until seen.

Beside the footpath near the visitor centre, Tony pointed out some dwarf *Cananga odorata* shrubs. *Cananga* trees are native to North

Queensland [and south east Asia] and the peculiar, strap-shaped yellow flowers are the source for the commercial perfume Ylang Ylang. There are several large *Cananga* trees in the forest that surrounds our home and late summer afternoons are filled with their delightful perfume. A dwarf specimen should be a must-have for a tropical garden.

The Gardens have undergone a lot of changes in recent years and deserve an extended visit, with the new orchid and fern conservatory a must-see. Renovations are on-going and it was good to see much more signage in the gardens which not only names the plants but also indicates origins and usage.

Mangosteen trees are commercially important and the gardens have several species. *Garcinia prainiana* was in fruit and Tony selected one of the small orange coloured ripe fruits to pass around. Sweet to the taste and better than the commercial mangosteen to my taste.

Wildlife goes with gardens and a small Jungle Fowl, *Megapodius reinwardt* was seen scuttling through the undergrowth, while overhead the magnificent local butterflies Blue Ulysses and Cairns Birdwings soared.



Bauhinia kockiana from Malaysia

The above is just a taste of what we saw; there will be more of the same when we visit Patsy [Penny]'s rainforest realm at East Russell next month. Be prepared for a plethora of rare lowland tropical rainforest plants – and perhaps a crocodile as well!

NEWS

Mick Jackes

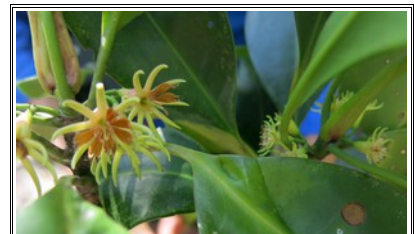
I'm sad to pass on the news of the death of E.M. "Mick" Jackes OAM, on 13 April 2016. Mick, the husband of well known north Queensland botanist and university lecturer Betsy Jackes, had been ill for some time.

Mick was a true gentleman with a strong community spirit. He spent most of his working life as an Air Traffic controller, and was awarded the Medal of the Order of Australia in 1993 recognising his public service through the Civil Aviation Authority.

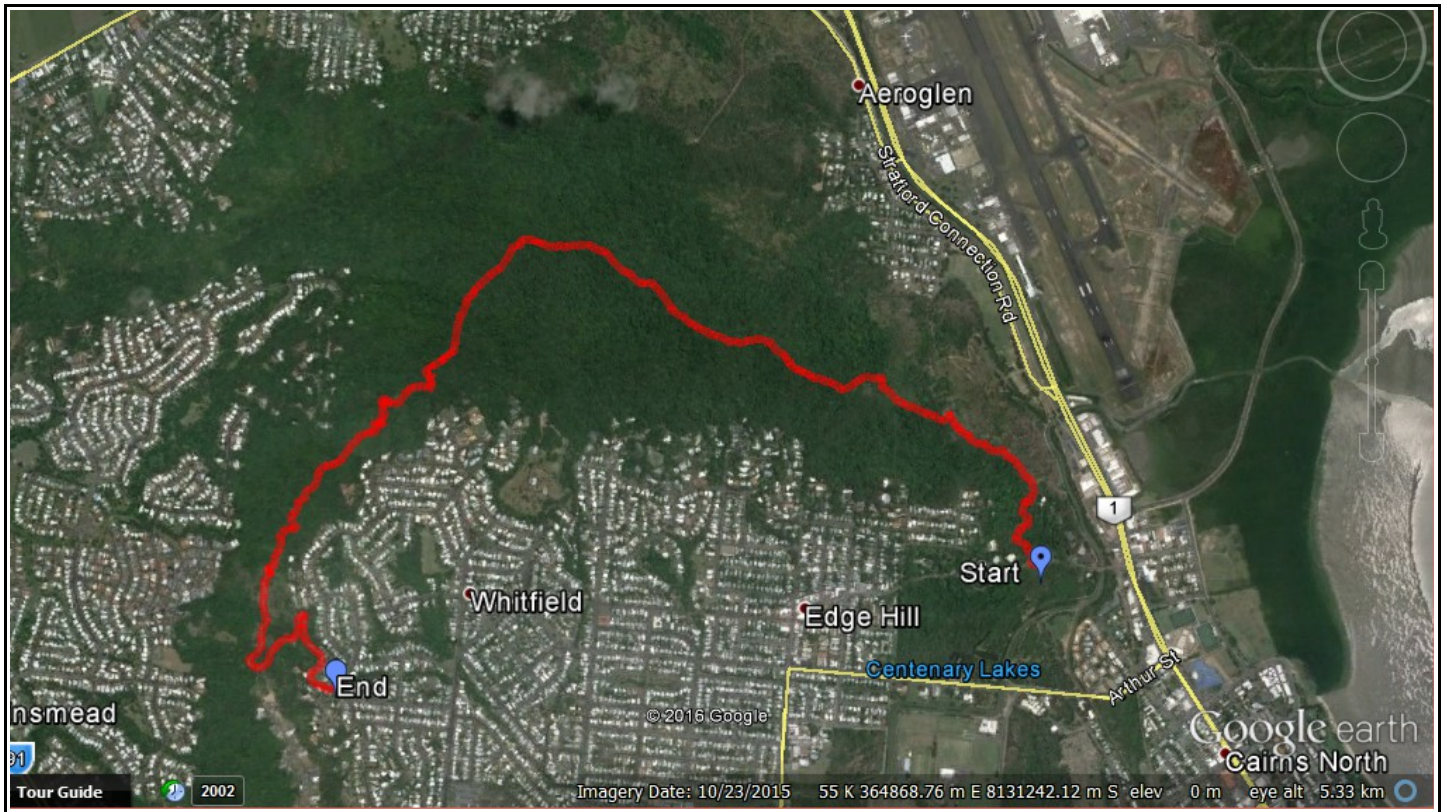
Mick has a keen interest in the environment and participated in numerous biological field trips, in particular supporting Betsy in her university field teaching programs. It was on one of these trips that they collected the type for a new wattle species, *Acacia jackesiana*. Mick led an extremely active retirement until illness slowed him down. His funeral will be held in Townsville next Tuesday 19 April.

New mangroves

Some may have already heard on the grapevine of the discovery of not one, but two new mangroves in Portsmith, Cairns. The two species, *Bruguiera hainesii* and *Bruguiera cylindrica* were found on the banks of Chinaman Creek, just a stones throw from the southwestern end of Spence Street. The discovery, made by amateur naturalist Hidetoshi Kodu, has been confirmed by Dr Norm Duke, mangrove authority from James Cook University Townsville Campus. *B. cylindrica* has never been found south of Cooktown, however, *B. hainesii* is the first record in Australia for this species, which is listed as Critically Endangered by the IUCN.



Bruguiera hainesii (left) and *B. cylindrica* (right)



THE GREEN ARROW WALK - A NEW TRACK ON THE WHITFIELD RANGE.

Stuart Worboys

The recently established Green Arrow Walk is a long anticipated addition to the walks of the Whitfield Range. The Blue and Red Arrow walks were first laid out in 1974, but the Green Arrow Walk was only made possible by the purchase of 21.5 ha of land on the ridge behind Whitfield. The track is now complete and open to the public. It starts near the

middle of the Blue Arrow walk, and proceeds west, then south west, over the 346 m high peak of Mount Whitfield, and

pleasant walk through the leafy streets of Edge Hill and Whitfield (with several tempting coffee shops along the way) back to the start of the Red Arrow Walk.

Tony Roberts

In cooperation with the Wet Tropics Management Authority and Queensland National Parks and on behalf of Cairns Regional Council, I am organising a guided tour of Mt Whitfield (Red, Blue & Green tracks) on Sunday 26 June, commencing at 9am.

I am trying to attract some scientists (geologists, botanists, zoologists, ornithologists and maybe an historian) to assist with the natural history etc. The guided tour is not intended to be too technical, more just interesting facts.



View of Brinsmead and Redlynch from the Green Arrow Walk.

ending in the posh Whitfield address of Bel Air Drive (see



March 22, 2016

Yabba Capricorn - Rockhampton October 7, 8 & 9, 2016

All NPQ members are encouraged to meet together in Rockhampton for the *Yabba Capricorn 2016*. The Rockhampton Branch is preparing a very interesting program and a series of field trips to special areas of their region. Also as a result of our President Ian's recent state-wide visits to Branches there will be much discussion about the exciting changes to ensure the future of NPQ and encourage growth in membership.

The outline program below is subject to 'polishing' but gives a good idea of the scope of this interesting weekend. Further detail will be provided through the NPQ Journal and website. **HOWEVER** if you are even remotely interested in attending it is strongly recommended that you book your accommodation **NOW**. We understand that the Singapore Army will be on manoeuvres in the region at the same time as Yabba and accommodation is even now at a premium.

TRANSPORT

- We are investigating the feasibility of a coach from Brisbane (October 7 – 10) which will also be used for the excursions on Saturday and Sunday. Depending on the ultimate patronage numbers the costs would be of the order of: full four day fare approx. \$200 and two day weekend fare approx. \$70;

To assist the final decision – please advise your interest in a seat by May 22.

- Train arrives from Brisbane at midnight – so probably not ideal for most
- Flights from Brisbane vary between carriers and times - \$89 to \$115 each way

ACCOMMODATION

- Members must make their own bookings - desirable as soon as possible.
- Recommended venue: Parkhurst Motel and Van Park (northside); it has camping, van and cabin accommodation – economic and acceptable – phone (07) 4936 1126
 - Double rooms \$70 / room
 - Family rooms \$110 / room – 4 beds
- Aboriginal Cultural Centre Motel – within walking distance of above
- There are other motels on the northside but not within walking distance
- The Parkhurst Hall adjacent to the Parkhurst Motel will be the Yabba meeting venue. There are no café or restaurant facilities but a simple kitchen is available.
- Friday evening – to be BYO food and drinks
- Saturday evening – to be a BBQ organised by the Branch – (fee)
- The Parkhurst Tavern, a short drive away has food and drinks available.

Society for Growing Australian Plants Queensland Region Inc - trading as

Native Plants Queensland

Honorary Secretary
P.O. Box 586
FORTITUDE VALLEY 4006
EMAIL: secretary@npq.org.au

ABN: 92 312 012 800



INTERIM PROGRAM - *there may be some minor changes as the planning proceeds*

Friday October 7

- Members will make their own way to Rockhampton from throughout Queensland
- Those arriving earlier will be offered suggestions for Friday afternoon to explore local areas of interest and Branch projects: Kershaw Gardens, Botanic Gardens, River Bank stabilization, etc
- 5.00 Yabba together over a BYO drink and nibbles
- 6.00 Evening meal - either BYO or simple catering (fee) – to be decided
- 7.00 Introduction to the weekend excursions
- 7.30 **NPQ Yabba – discussion evening re NPQ and our future**

Saturday October 8

Today is a BYO food and beverage excursion

- 8.00 Serpentine Country, Marlborough (30 minutes north of Parkhurst)
- 12.00 lunch – somewhere along the way
- 1.00 Through the Trachyte Plug Country to Yeppoon, then to Coastal Scrubs of Double Heads, back through Emu Park and Cawarral (Mt Headlow)
- 5.00 Back at Parkhurst – BYO drinks and nibbles
- 6.00 Yabba BBQ Dinner (fee)
- 7.30 **Bill Tulloch Memorial Lecture – Leslie Lowe** (2013 Diversity Bursary recipient)
- 8.30 "Species Profile" fantastic digital tools that are available for information, collection and plant identification of value to NPQ members.
- 10.00 BYO Supper

Sunday October 9

Today is a BYO food and beverage excursion

- 8.00 depart Parkhurst for Blackdown Tableland
- 10.30 arrive Blackdown Tableland
- 3.30 depart Blackdown Tableland
- 6.00 return to Parkhurst

It is expected that some members may decide stay on at Blackdown.

WHAT YOU NEED TO DO NOW

- Immediately book your own accommodation!
- Before May 22 advise NPQ Secretary if you are interested in travel Brisbane to the Yabba by coach
- Before May 22 advise NPQ Secretary if you are interested in travel to Blackdown Tableland

Lawrence S. Smith
DISPLAYS OFFICER

Native Plants Queensland

(SGAP Queensland Region Inc.)

Please send reply emails to
Secretary@npq.org.au

C:\Users\lawrie\Documents\SGAP\YABBA\Yabba Capricorn 2016\Yabba Capricorn Invite.doc

page 2 of 2

MAY/JUNE 2016



WET TROPICS WILD EXPOSURE EXHIBITION

HIKE`n`BIKE

The Wet Tropics region offers wonderful opportunities to get out and about amongst nature. Come along and find out about where to go for some adventure.

- **21 May - 10am to 11am** : Walks of the Wet Tropics talk by local author Paul Curtis
Grab a free banana smoothie by riding a bike.
- **Sunday 12 June - 10am to noon** : 12km community bike ride* and sausage sizzle at Centenary Lakes. Starting from Freshwater Lake picnic shelter on Greenslopes St. Bikes are available for use (REGISTER BY THURS 9 JUNE). MEDIUM FITNESS LEVEL REQUIRED.
- **Sunday 26 June - 9am start**: 7km guided walk with a number of local scientists along Mt Whitfield's Red, Blue & Green Arrow walk* (one way-free bus back to Visitor Centre). MODERATE LEVEL OF FITNESS & SOME BUSHWALKING EXPERIENCE REQUIRED. YOU WILL ENCOUNTER MANY STEPS ALONG THE TRACK WITH OBSTACLES SUCH AS TREE ROOTS & ROCKS. SOME SECTIONS ARE STEEP. WE WILL REACH AN ELEVATION OF 364m ABOVE SEA LEVEL.

NOTE : Bring water for the ride and walk.

PLEASE BOOK for the ride and walk by calling the Botanic Gardens on (07) 4032 6650.

*CHILDREN MUST BE ACCOMPANIED BY AN ADULT

COST: FREE | **DATE:** 16 May-26 June 2016 | **VENUE:** Cairns Botanic Gardens Visitor Centre

MORE INFORMATION: www.wettropics.gov.au | www.facebook.com/WetTropicsWorldHeritageArea

Hike'n' Bike is presented as part of the Wet Tropics Management Authority Wild Exposure series being held at the Cairns Botanic Gardens Visitor Centre.



CAIRNS
Botanic
Gardens
Cairns Regional Council



WET
TROPICS
MANAGEMENT AUTHORITY



WHAT'S HAPPENING?

Cairns Branch

17 April 2016 – Russell River

Meet midday at Patsy Penny's property, Kruckow Road, East Russell. Directions: Head to Babinda, 59 km S of Cairns.

Just before the main entrance to Babinda shopping strip, turn left across the railway line, then left again into Howard Kennedy Drive.

A couple of hundred metres up the road, take a sharp right turn into Clyde Road. After 3.5 km you'll cross the Russell River. You're now on Kruckow Road. Follow Kruckow Road to its end, past the Lawie's House.

May 2016 – Daintree River

21 May 2016 - "Walks of the Wet Tropics" talk by Paul Curtis, Botanic Gardens Visitor Centre.

12 June 2016 - Community Bike Ride. See advertisement, p 6 for more details.

June 2016 – Stannary Hills

July 2016 – Emerald Creek Falls

August 2016 – Julatten (to be confirmed)

September 2016 – Cattana Wetlands, Smithfield

7-9 October 2016 - Yabba Capricorn - see , p 4 & 5 for details.

October 2016 – Jumrun Nature Walk, Kuranda.

Townsville Branch

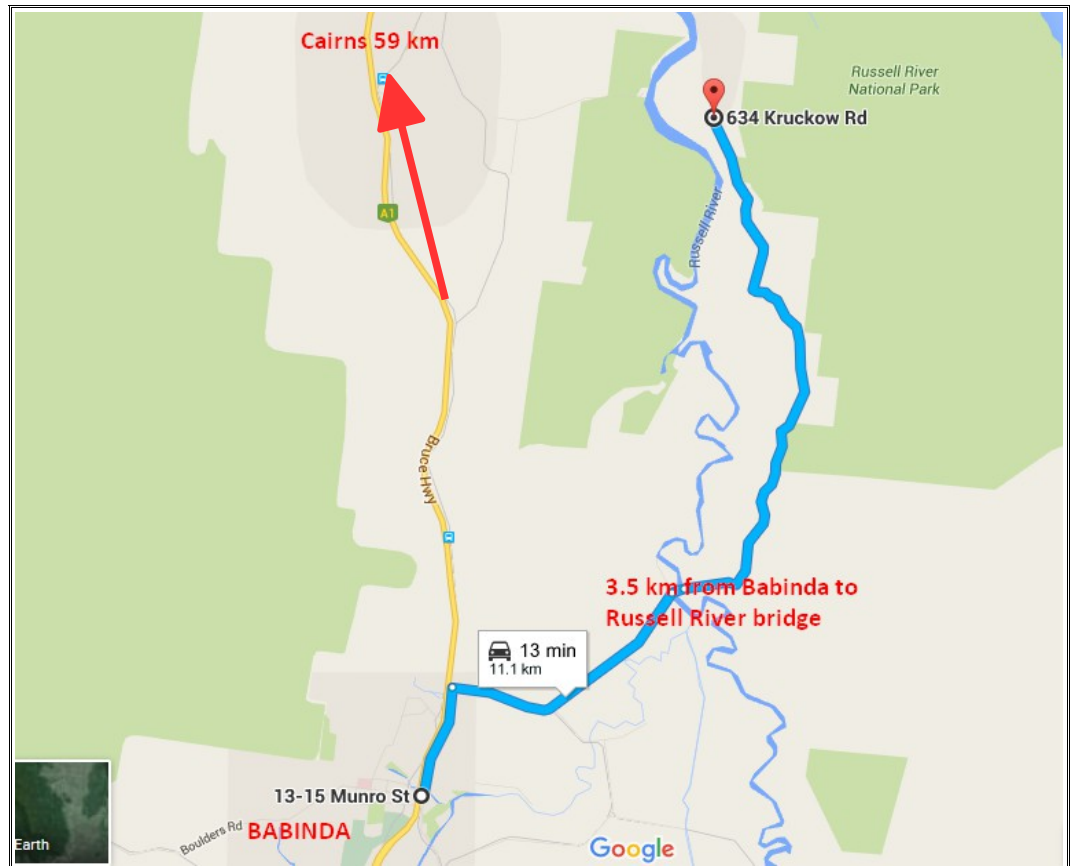
Meets on the 2nd Wednesday of the month, February to November, in Annandale Community Centre at 8pm, and holds excursions the following Sunday.

See www.sgaptownsville.org.au/ for more information.

Tablelands Branch

Meetings on the 4th Wednesday of the month. Excursion the following Sunday. Any queries, please contact Chris Jaminon on 4091 4565 or email

hjaminon@bigpond.com



SGAP CAIRNS BRANCH 2016 COMMITTEE

President: Tony Roberts (t.roberts@cairns.qld.gov.au)

Vice President: Pauline Lawie

Secretary: Coralie Stuart

Treasurer: Val Carnie

Newsletter: Stuart Worboys (worboys1968@yahoo.com.au)

Webmaster: Tony Roberts