

# TOSHIBA TEC PRINTERS

## TOSHIBA BSV4D

SINEL reference **48225**

With its characteristics, capacity, and its new opening system, this model offers great flexibility both for beginners and experts. Its reduced weight and size make it ideal for offices, express messenger services, public administration, and minor mailing campaigns.

Technology:	Direct thermal
Printing width:	50 a 108 mm
Resolution:	200 dpi
Speed:	127 mm/sec.
Production:	Up to 500 labels/day
Connection:	USB, series and parallel port
Standard:	Basic label software



**NEW**



## TOSHIBA BSV4T

SINEL reference **49300**

Compact, user-friendly desk top printer. Its new processor makes it the fastest printer in its category.

Technology:	Thermal transfer or direct thermal
Printing width:	50 a 108 mm
Resolution:	200 dpi
Speed:	127 mm/sec.
Production:	Up to 500 labels/day
Standard:	Basic label software

## TOSHIBA B-431 GS 10 QP

SINEL ref. **22351**

An industrial thermal printer with a metal structure ideal for heavy-duty production of labels. It combines quality and printing speed, for bar codes, fonts, and graphics. Appropriate for the printing of entry tickets for shows (cinemas, theatres, etc.), and shipping labels, suitable for the logistics sector.

Technology:	Direct thermal
Printing width:	22 a 104 mm
Resolution:	200 dpi
Speed:	127mm/seg.
Production:	Up to 10.000 labels/day
Connection:	Series and parallel port



## TOSHIBA B-452 QP

SINEL reference **22953**

Its mechanical structure makes it long lasting and compact. Easy to replace used-up label rolls and ribbons, thanks to its opening system. This machine is normally used for show entrance tickets, polyamide labels for textiles, health centres, electronics and logistics sectors.

Other TEC B-452 versions available  
 TOSHIBA B-452 SLP RFID **RFID-HF tag engraver**  
 TOSHIBA B-452 HS12 QP 600 dpi high resolution

SINEL reference **47195**  
 SINEL reference **47370**



**RFID**

Technology:	Thermal transfer or direct thermal
Printing width:	50 a 100 mm
Resolution:	300 dpi
Speed:	100 mm/sec.
Production:	Up to 2.000 labels/day
Connection:	Series and parallel port

See page 32 for TOSHIBA TEC printer **accessories**, pages 33 and 34 for **ribbons**, and page 35 for our **recommended labels** for these machines.

# TOSHIBA B-SA4-TM

SINEL reference **49503**

**NEW**

Metal cased industrial printer with a new design that improves accessibility by the user, with a wide printer head opening for easy and simple use and cleaning. It has the possibility of changing the printing resolution from 200dpi to 300 dpi in a simple way. Its characteristics make it on suitable printer for different sectors such as transport, logistics, production lines and warehouses.

Another available version: B-SA4-TM HS 600 dpi

Technology:	Thermal transfer or direct thermal
Printing width:	23 a 104 mm
Resolution:	200 dpi
Speed:	150 mm/sec.
Production:	Up to 10.000 labels/day
Connection:	Series, parallel, USB 2.0



**NEW**

# TOSHIBA B-SA4-TP

SINEL reference **49504**



Plastic cased desk top printer which incorporates the latest electronic technology, increasing the durability of the printheads, as well as a improving in the printing quality, together with a new design. This is a technically top-of-the-range product with a very attractive design. It has the possibility of changing the printing resolution from 200 dpi to 300 dpi in a simple way. Its characteristics make it a suitable printer for different sectors such as transport, logistics, offices, public authorities, health and ticketing.

Other available version: B-SA4-TP HS 600 dpi.

Technology:	Thermal transfer or direct thermal
Printing width:	23 a 104 mm
Resolution:	200 dpi
Speed:	150 mm/sec.
Production:	Up to 10.000 labels/day
Connection:	Series, parallel, USB 2.0

# TOSHIBA B-SX4T

SINEL reference **48224**

**NEW**

**RFID**

This is one of the most complete models in the range, with its new USB (optional), parallel and series connections, and state-of-the-art technology for printing and engraving RFID tags. Its new printer head unit opening system makes replacing peripheral supplies easy.

Technology:	Thermal transfer or direct thermal
Printing width:	30 a 104 mm
Resolution:	200 dpi
Speed:	254 mm/sec.
Production:	24 h/day
Connection:	Series and bidirectional parallel port. USB optional
Standard:	Basic software



**NEW**

**RFID**

# TOSHIBA B-SX5T

SINEL reference **48475**



Industrial printer with a new printer head unit opening system which makes it easy for user to replace ribbon and labels. Includes a new system of high-quality printing and a long-lasting printing head. Its metal structure and standard accessories make it the most complete printer for all industrial environments. **Printing of RFID-UHF tags (optional).**

Technology:	Thermal transfer or direct thermal
Printing width:	50 a 128 mm
Resolution:	300 dpi
Speed:	200 mm/sec.
Production:	24 h/day
Connection:	Series and parallel port. USB optional
Standard:	Ribbon saver, dispenser module, basic software

See page 32 for TOSHIBA TEC printer **accessories**, pages 33 and 34 for **ribbons**, and page 35 for our **recommended labels** for these machines.

## TOSHIBA B-852 TS12 QP

SINEL ref. 47536

This printer has PCL5, allowing the replacement of laser printers without modifying the program. Suitable for labelling pallets in the logistics, chemical, automotive and services (insurance and banking) sectors.

Technology:	Thermal transfer or direct thermal
Printing width:	100 a 216 mm
Resolution:	300 dpi
Speed:	100 mm/sec.
Production:	Up to 2.000 labels/day
Connection:	Series and parallel port



## TOSHIBA B-682 TS12 QP

SINEL ref. 47371

Belongs to a new generation of printers with a higher printing quality and great data-processing capacity. Suitable for large-scale production of labels. Ideal for the logistics (pallet labelling) and chemical sectors.

Technology:	Thermal transfer or direct thermal
Printing width:	84 a 172 mm
Resolution:	300 dpi
Speed:	200 mm/sec.
Production:	24 h/day
Connection:	Series and parallel port

## TOSHIBA B-882 QP

SINEL reference 47392

Printer with steel case for tough or industrial environments. With a wide range of fonts and bar codes, together with a message display for the user. Suitable for the logistic and chemical sectors.

Technology:	Thermal transfer or direct thermal
Printing width:	100 a 213 mm
Resolution:	200 dpi
Speed:	200 mm/sec.
Production:	24 h/day
Connection:	Series and parallel port
Standard:	Ribbon saver



See page 32 for TOSHIBA TEC printer **accessories**, pages 33 and 34 for **ribbons**, and page 35 for our **recommended labels** for these machines.

# TOSHIBA CB-416 T3

SINEL reference 21756

A thermal transfer colour printer with four printing heads. It has an all-metal case, suitable for large-scale production of labels. Ideal for warehouses, lineal labelling in supermarkets, hospitals and shoe sector.

Technology:	Thermal transfer
Printing width:	47 a 101 mm
Resolution:	300 dpi
Speed:	200 mm/sec.
Production:	24 h/day
Connection:	Series and parallel port
Standard:	Ribbon saver



# TOSHIBA B-415 portable

SINEL reference 47355

Light portable printer, compact and highly durable. Suitable for express transport services, warehousing and re-labelling of products. The variability of the printing width makes it very versatile. Consult us for other versions and communication protocol options.

Technology:	Direct thermal
Printing width:	27 a 101,6 mm
Resolution:	200 dpi
Speed:	50 mm/sec.
Production:	Up to 1.000 labels/day
Connection:	Series port and Irda (infrared) or Bluetooth
Standard:	Dispenser module



# TOSHIBA B-SP2D portable

SINEL ref. 48653

The new generation of portable printers from TOSHIBA TEC. Its reduced size (the smallest on the market) and its variety of interface (series, Bluetooth, WiFi, Irda) make it versatile, for innumerable applications. Consult us for other versions and communication protocol options.

Technology:	Direct thermal
Printing width:	25 a 48 mm
Resolution:	200 dpi
Speed:	80 mm/sec.
Production:	Up to 1.000 labels/day
Connection:	Series port, Irda and Bluetooth or WiFi



See page 32 for TOSHIBA TEC printer **accessories**, pages 33 and 34 for **ribbons**, and page 35 for our **recommended labels** for these machines.



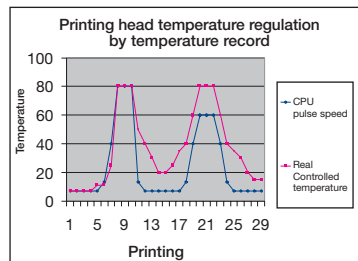
**TECNOLOGÍA  
TOSHIBA**

## High-performance CPU

- Multifunction
- Integrated circuits designed exclusively for TOSHIBA to lighten microprocessor workload and increase overall performance of printer.



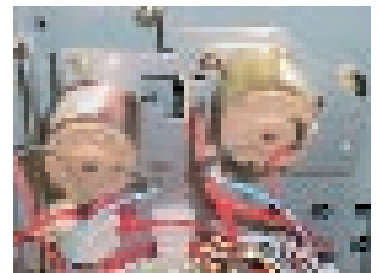
## Record-regulated printing head temperature control



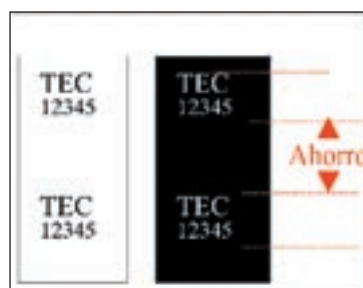
- Flawless printing quality
- Longer printing head life
- Temperature applied depends on previous and future temperatures: just the right amount of heat

## Twin motor for ribbon

- No wrinkles on ribbon
- Uniform tension at the beginning and at the end of ribbon
- Lineal speed control of individual motor: tension applied depends on the ratio of diameters.
- Eliminates mechanical clutches and some maintenance procedures.



## Real savings on ribbon



- Longer ribbon replacement intervals
- Ease of use, automatic
- Savings on ribbon from longer non-stop operation

# TOSHIBA **Advanced functions**

## BASIC interpreter

It allows to run Basic programmes to handle previously received printing data and generate accurate labels.

Main functions:

- connect printer to existing systems without changing software
- connect different data-capture devices (scales, readers, etc.) to create a self-sufficient printing system

Available in the following models: B-SX4, B-SX5, B-682, B-882, B-852, B-492 (module for printer applicators)

## WEB Functions

- **HTTP: Internet, remote maintenance** through standard HTML browsers: Internet Explorer, Netscape

Main functions:

- see present status, remaining ribbon, sensors
- see maintenance gauges
- parameter edition
- sending of printing data
- consultation and printing from spool (printing queue)

- **E-mail**

Main functions:

- send printing commands (as simple as sending an E-mail)
- automatic warnings: the printer will send an E-mail to a previously assigned address with the details of the cause for the warning

- **FTP: Standard Internet File Transfer Protocol**

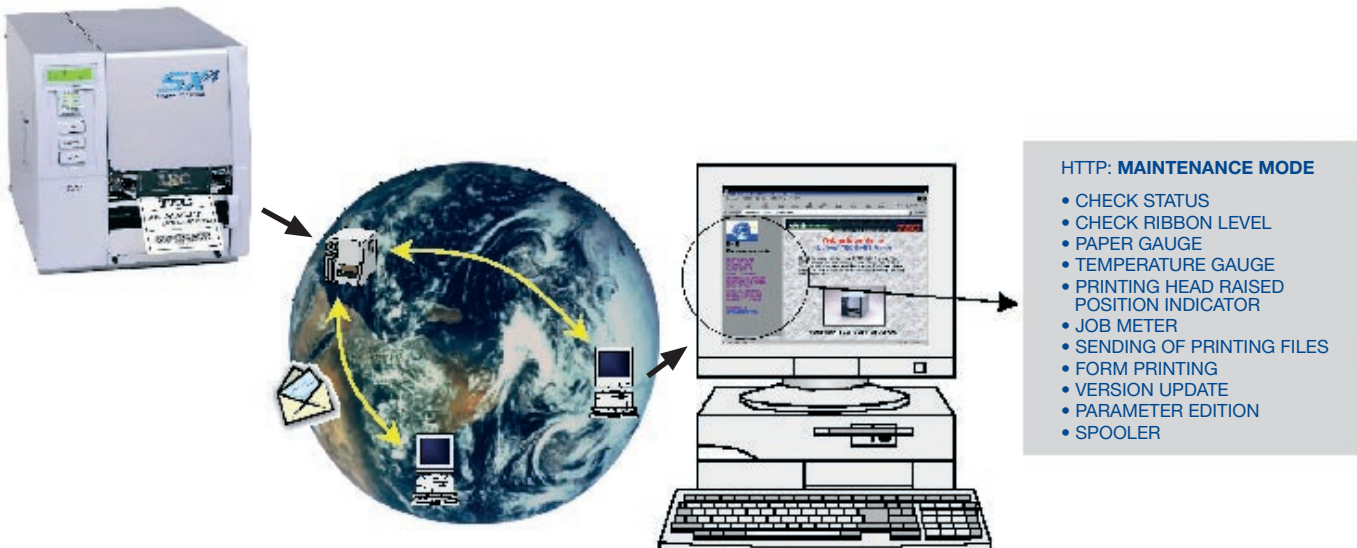
Main functions:

- sending of printing files
- printing of files on spool
- file loading: designs, fonts, spooling of printing jobs

- **XML (Extensible Markup Language): Standard Internet language** to communicate, transmit or interpret data among different applications

Allows the sending of printing commands, individualizing the printer's language data to make programming easier.

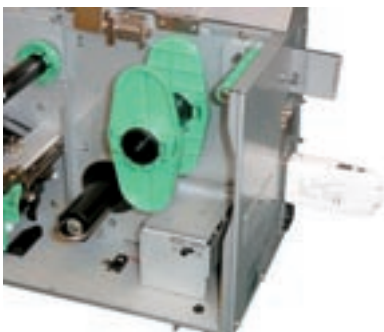
Available in models: B-SX4, B-SX5, B-682, B-882, B-852, B-492



# TOSHIBA TEC printer Accessories

SINEL reference	ACCESSORIES	B-443/SV4T	B-SV4D	B-431	B-452	B-372	B-472	B-SX4T	B-SX5T	B-482	B-572	B-682	B-882	B-852	CB-416
22428	Detacher Module			•											
22429	Folded paper guide			•											
22614	Detacher module				•										
22613	Cutter module				•										
22924	Network internal interface				•										
21455	IN/OUT Interface				•										
22925	Programmable stand-alone numeric keyboard KB-80				•										
consult	2Mb flash card		•												
consult	Detacher module		•												
22609	BUR-400 External rewinder	•	•	•	•	•	•	•	•	•	•	•	•	•	•
49445	KB71 Programmable/stand-alone alphanumeric keyboard	•	•	•	•	•	•	•	•	•	•	•	•	•	•
48906	Wifi 802.11.b Wireless printer server	•	•	•	•	•	•	•	•	•	•	•	•	•	•
47263	External printer server for Windows networks	•	•	•	•	•	•	•	•	•	•	•	•	•	•
48498	Ribbon saver							•							
48499	Detacher module							•							
48516	USB Interface							•	•						
consult	Interface cards							•	•						
48590	IN/OUT Interface							•	•						
21454	Ribbon saver						•								
21455	Parallel, IN-OUT, PCMCIA Interface						•								
21576	Cutter module					•									
21410	Cutter module						•	•	•	•	•				
21453	Detacher and internal rewinder module						•			•					
22611	Folded paper guide						•			•	•				
22927	High-performance rotary cutter module							•	•	•					
47568	PCL-5 language emulation interface														•
47567	PCMCIA interface														•
47566	Cutter module														•
21638	Detacher module											•	•		
22284	Ribbon saver											•	•		
22929	IN/OUT Interface									•				•	
22928	Cards interface									•		•	•		
21637	Cutter module											•	•		
22610	4 Mb flash card					•	•	•	•	•	•	•	•		
47252	BUR- 100 External rewinder											•	•	•	
22038	Remote rewinder with reverse														•
21757	Cutter module														•
consult	UHF Model							•	•						
consult	HF Model							•	•						

Request information for other accessories and available spare parts



Printer server



keyboards



BUR 400 rewinder

# TOSHIBA RIBBONS

## Why do we recommend the use of original ribbon?

### 1. Better performance and printing quality.

**TOSHIBA** ribbons have been manufactured to work in perfect conditions with the entire range of printers and the different printing techniques used. Using original **TOSHIBA** ribbons we improve the printing quality and increase the life of the print head.

### 2. Wide range of ribbons.

The wide range of ribbons is the result of years of research and development. Each type offers its own printing characteristics, depending on the application for which it is used.

### 3. Immediate availability of numerous measurements (24h).

The numerous existing measurements and their immediate availability allow the most suitable choice.

## SAVE MONEY USING ORIGINAL RIBBON

## Standard black wax **TOSHIBA** ribbon

SINEL reference	Length in metres	Width in mm.	Rolls per box	B-443/SV4T	B-452	SA4M/4P	B-372	B-472/ SX4	B-482	B-572/ SX5	B 672	B-682	B-872	B-882	B-852	Printing head B-492
22630	300	60	10		•	•										
22631	300	110	10		•	•										
21833	600	55	10				•	•	•	•						•
21834	600	68	10				•	•	•	•						•
21835	600	76	10				•	•	•	•						•
21836	600	89	5				•	•	•	•						•
21837	600	102	5				•	•	•	•						•
21838	600	114	5				•	•	•	•						•
21839	600	134	5				•	•	•	•						•
21840	300	115	5								•	•	•	•		
21993	300	138	5								•	•	•	•		
21841	300	160	5								•	•	•	•		
21994	300	176	5								•	•	•	•		
21842	300	220	5								•	•	•	•		
47552	300	120	5												•	•
47553	300	160	5												•	•
47554	300	220	5												•	•
22047	300	40	25	•												
22048	300	64	25	•												
22049	300	83	10	•												
22050	300	110	10	•												

## Black fabric **TOSHIBA** ribbon

SINEL reference	Length in metres	Width in mm.	Rolls per box	B-443/SV4T	B-452	SA4M/4P	B-372	B-472/ SX4	B-482	B-572/ SX5	B 672	B-682	B-872	B-882	B-852	Printing head B-492
21445	320	38	10	•	•	•	•	•	•	•						
21446	320	48	10	•	•	•	•	•	•	•						
22194	320	58	10	•	•	•	•	•	•	•						
22195	320	83	10	•	•	•	•	•	•	•						



## Standard black wax/resin **TOSHIBA** ribbon

SINEL reference	Length in metres	Width in mm.	Rolls per box	B-443/SV4T	B-452	SA4M/4P	B-372	B-472/ SX4	B-482	B-572/ SX5	B 672	B-682	B-872	B-882	B-852	Printing head B-492
22628	250	60	10		•	•										
22629	250	110	10		•	•										
21571	600	55	10				•	•	•	•						•
21417	600	68	5				•	•	•	•						•
21572	600	76	5				•	•	•	•						•
21418	600	89	5				•	•	•	•						•
21419	600	102	5				•	•	•	•						•
21420	600	114	5				•	•	•	•						•
21421	600	134	5				•	•	•	•						•
21629	300	115	5								•	•	•	•		
21991	300	138	5								•	•	•	•		
21630	300	160	5								•	•	•	•		
21992	300	176	5								•	•	•	•		
21631	300	220	5								•	•	•	•		
47549	300	120	5												•	
47550	300	160	5												•	
47551	300	220	5												•	
22053	300	40	25	•												
22054	300	64	25	•												
22055	300	83	10	•												
22056	300	110	10	•												

## High-resistance black **TOSHIBA** ribbon

SINEL reference	Length in metres	Width in mm.	Rolls per box	B-443/SV4T	B-452	SA4M/4P	B-372	B-472/ SX4	B-482	B-572/ SX5	B 672	B-682	B-872	B-882	B-852	Printing head B-492
22632	270	60	10		•	•										
22633	270	110	10		•	•										
21695	600	55	10				•	•	•	•						•
21717	600	68	10				•	•	•	•						•
21694	600	76	5				•	•	•	•						•
21680	600	89	5				•	•	•	•						•
21693	600	102	5				•	•	•	•						•
21718	600	114	5				•	•	•	•						•
21692	600	134	5				•	•	•	•						•
21632	300	115	5								•	•	•	•		
21995	300	138	5								•	•	•	•		
21633	300	160	5								•	•	•	•		
21996	300	176	5								•	•	•	•		
21634	300	220	5								•	•	•	•		
47555	300	120	5												•	
47556	300	160	5												•	
47557	300	220	5												•	
22059	300	40	25	•												
22060	300	64	25	•												
22061	300	83	10	•												
22062	300	110	10	•												

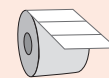
# Recommended labels for TOSHIBA printers

**SINEL SYSTEMS**, the largest manufacturer of self-adhesive labels in Spain, offers a complete range of labels for thermal transfer and direct thermal printers, made from specially selected materials to obtain **optimum printing quality** and **longer lasting print heads**.

**SINEL SYSTEMS** offers a **48/72 hour service**

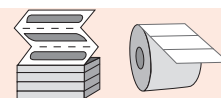
If you require labels in different formats or materials a **feel free to request a quotation** by calling Tel: 93 7452100, by fax on 93 7452101 or through our website: [www.sinel.com](http://www.sinel.com), 24 hours a day, where you can find all of the solutions we offer.

## Direct thermal labels



SINEL reference	Width in mm	Length in mm	B-431	B-443	B-452/SV4T	B-372	B-472/482	B-SX4T	SA4M/4P	B-SX5T	B-572	B672	B-682	B-872	B-882	B-852	Printing head B-492	CB-416	CB-426
19070	40,0	25,0	•	•		•													
19071	40,0	30,0	•	•		•													
19139	50,0	25,0	•		•		•	•		•	•						•	•	•
19135	85,0	50,0	•		•	•	•	•	•	•	•						•	•	•
19072	98,6	98,6	•	•			•	•	•	•	•	•	•	•	•	•	•	•	•
19073	100,0	50,0	•	•	•		•	•	•	•	•	•	•	•	•	•	•	•	•
19133	100,0	100,0	•	•	•		•	•	•	•	•	•	•	•	•	•	•	•	•

## Thermal transfer labels



SINEL reference	Width in mm	Length in mm	Presentation	B-431	B-443	B-452/SV4T	B-372	B-472/482	B-SX4T	SA4M/4P	B-SX5T	B-572	B672	B-682	B-872	B-882	B-852	Printing head B-492	CB-416	CB-426
19067	40,0	25,0	Roll		•	•	•													
19074	40,0	25,0	Roll		•		•													
19075	40,0	30,0	Roll		•		•													
19084	40,0	40,0	Roll		•		•													
19138	50,0	25,0	Roll			•	•	•	•		•	•						•	•	•
19085	50,0	50,0	Roll		•		•	•	•	•	•	•						•	•	•
19076	60,0	35,0	Roll		•		•	•	•	•	•	•						•	•	•
19077	70,0	30,0	Roll		•		•	•	•	•	•	•						•	•	•
19086	70,0	52,0	Roll		•		•	•	•	•	•	•						•	•	•
20047	71,0	72,0	Zig-zag		•	•	•	•	•	•	•	•						•	•	•
19078	80,0	30,0	Roll		•		•	•	•	•	•	•	•	•				•	•	•
19087	80,0	40,0	Roll		•		•	•	•	•	•	•	•	•				•	•	•
19134	85,0	50,0	Roll			•	•	•	•	•	•	•	•	•	•	•	•	•	•	•
19079	85,0	81,5	Roll		•		•	•	•	•	•	•	•	•	•	•	•	•	•	•
19080	89,0	36,0	Roll		•		•	•	•	•	•	•	•	•	•	•	•	•	•	•
19081	98,6	98,6	Roll		•		•	•	•	•	•	•	•	•	•	•	•	•	•	•
19051	99,6	99,5	Zig-zag		•	•		•	•	•	•	•	•	•	•	•	•	•	•	•
19068	100,0	36,0	Roll		•	•		•	•	•	•	•	•	•	•	•	•	•	•	•
19088	100,0	50,0	Roll		•		•	•	•	•	•	•	•	•	•	•	•	•	•	•
19141	100,0	100,0	Roll			•		•	•	•	•	•	•	•	•	•	•	•	•	•
19136	100,0	150,0	Roll			•		•	•	•	•	•	•	•	•	•	•	•	•	•
19137	100,0	150,0	Roll			•		•	•	•	•	•	•	•	•	•	•	•	•	•
20026	101,6	48,7	Zig-zag		•	•		•	•	•	•	•	•	•	•	•	•	•	•	•
22152	101,6	48,7	Zig-zag		•	•		•	•	•	•	•	•	•	•	•	•	•	•	•
22153	101,6	74,1	Zig-zag		•	•		•	•	•	•	•	•	•	•	•	•	•	•	•
19061	104,0	74,1	Roll		•		•	•	•	•	•	•	•	•	•	•	•	•	•	•
19082	105,0	148,0	Roll		•		•	•	•	•	•	•	•	•	•	•	•	•	•	•
19052	105,0	149,2	Zig-zag		•	•		•	•	•	•	•	•	•	•	•	•	•	•	•
22155	105,0	149,2	Zig-zag		•	•		•	•	•	•	•	•	•	•	•	•	•	•	•
19140	105,0	210,0	Zig-zag			•		•	•	•	•	•	•	•	•	•	•	•	•	•
19053	135,0	99,5	Zig-zag					•	•	•	•	•	•	•	•	•	•	•	•	•
20022	135,0	99,5	Zig-zag							•	•	•	•	•	•	•	•	•	•	•
19054	148,0	210,0	Roll										•	•	•	•	•	•	•	•
19083	148,0	210,0	Roll										•	•	•	•	•	•	•	•
22157	209,5	147,8	Zig-zag												•	•	•	•	•	•
20044	209,5	147,8	Zig-zag												•	•	•	•	•	•