



Comparative osteology:

Lets Learn about bones

Compiled by Dr. Namita Nayyar

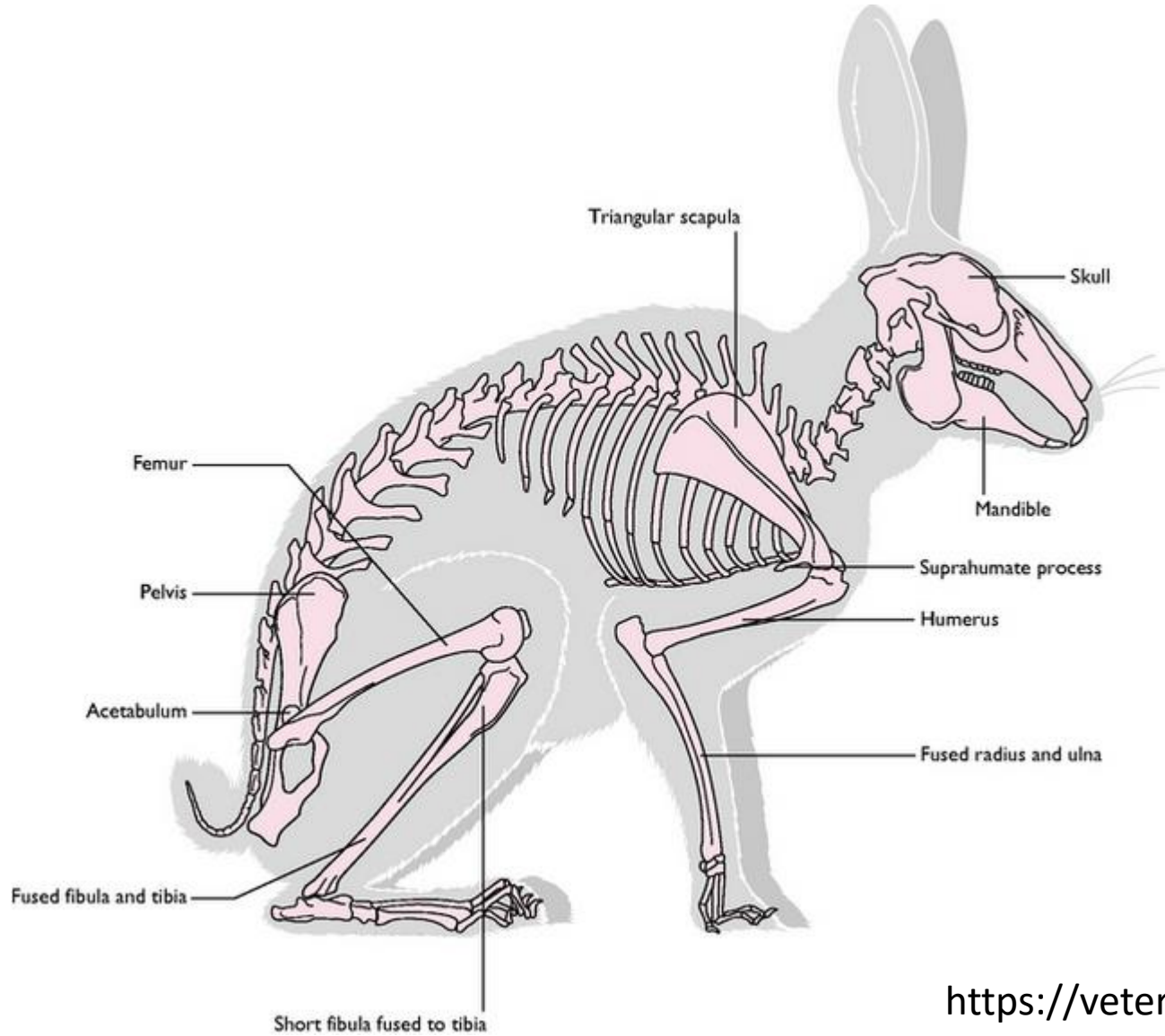
Diagram credits: Ms. Shalini Panwar

(B.Sc. (H) Zoology 2018-21)



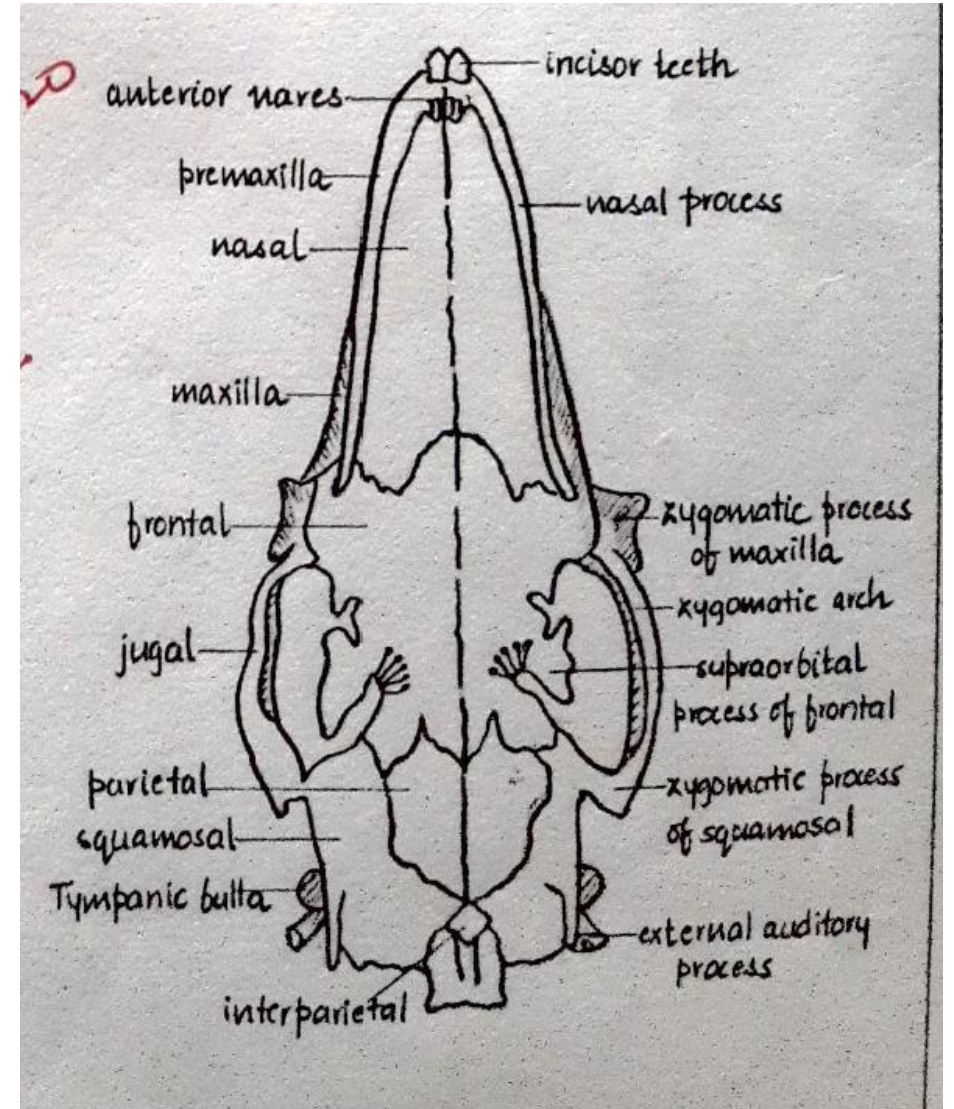
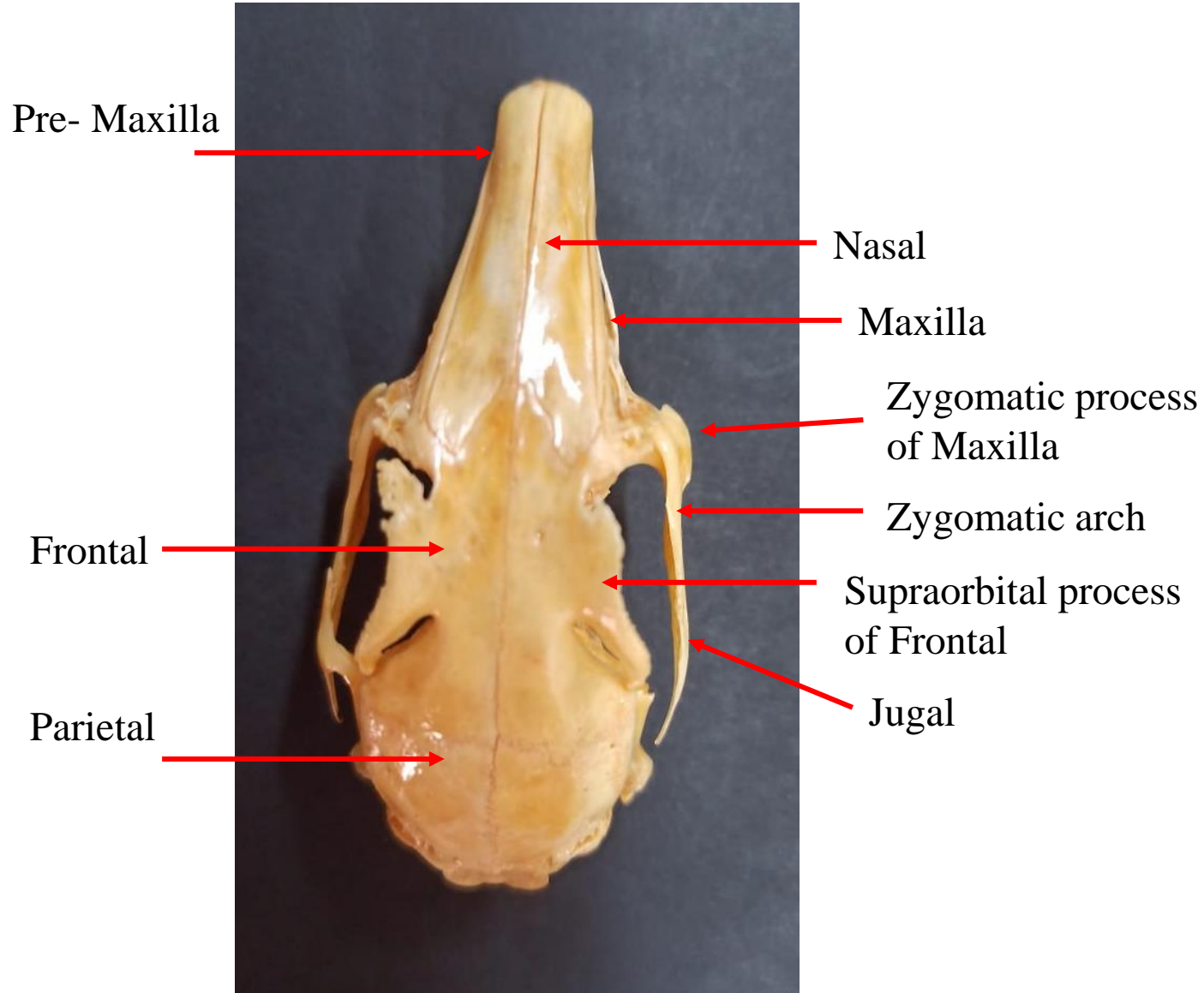
*For better Results:
Attend the Class... 😊*

Rabbit Endoskeleton



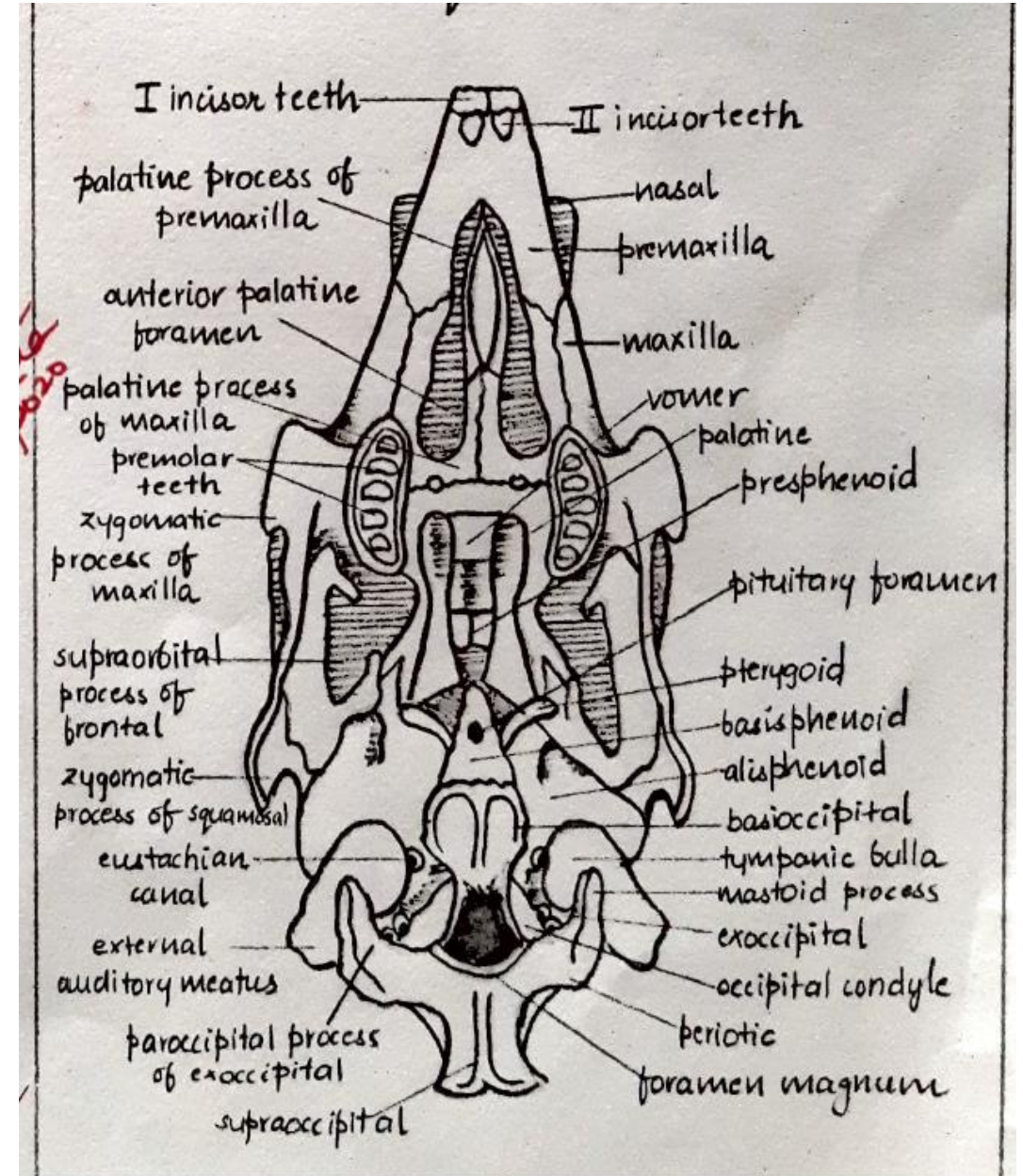
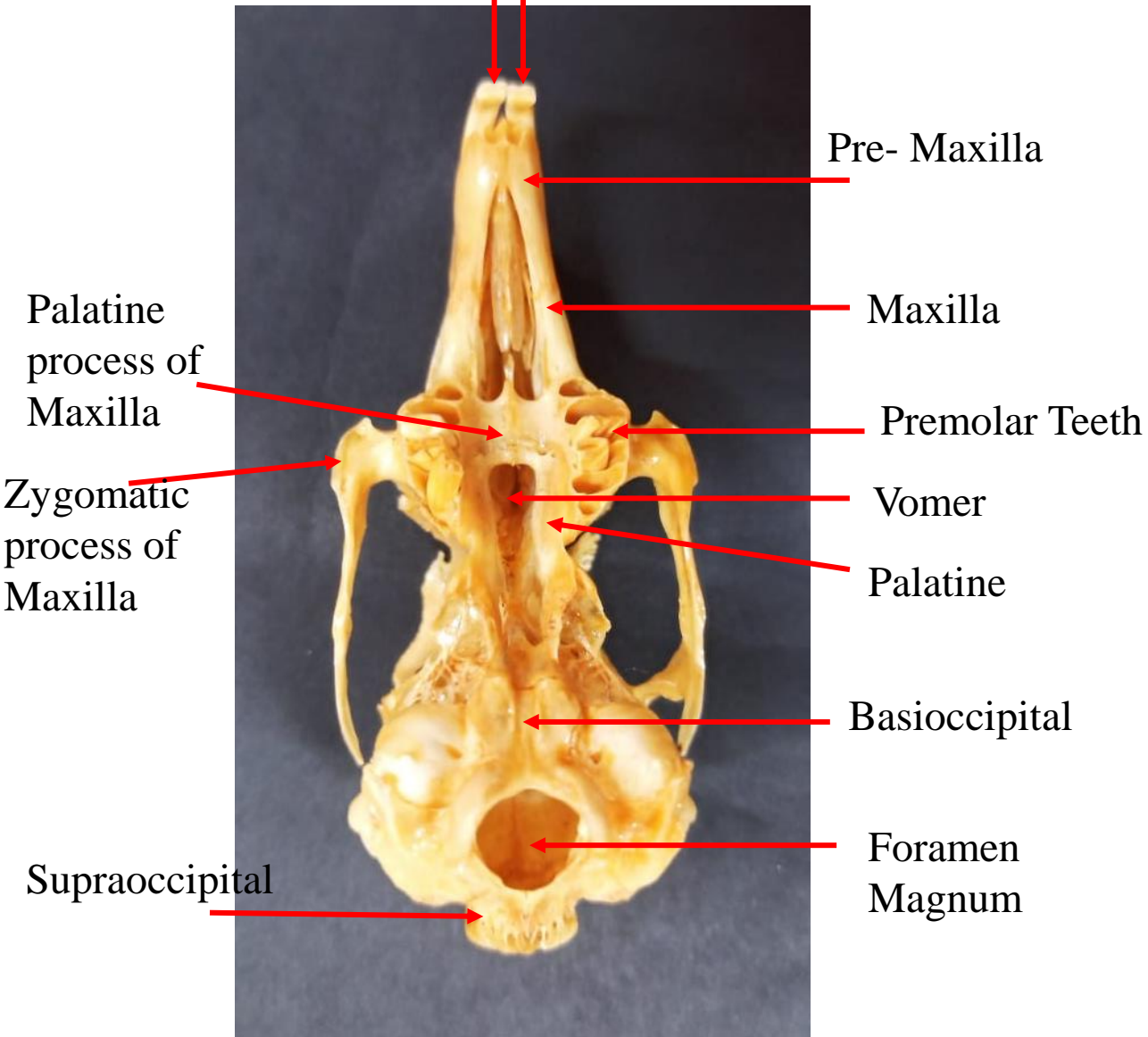
Skull

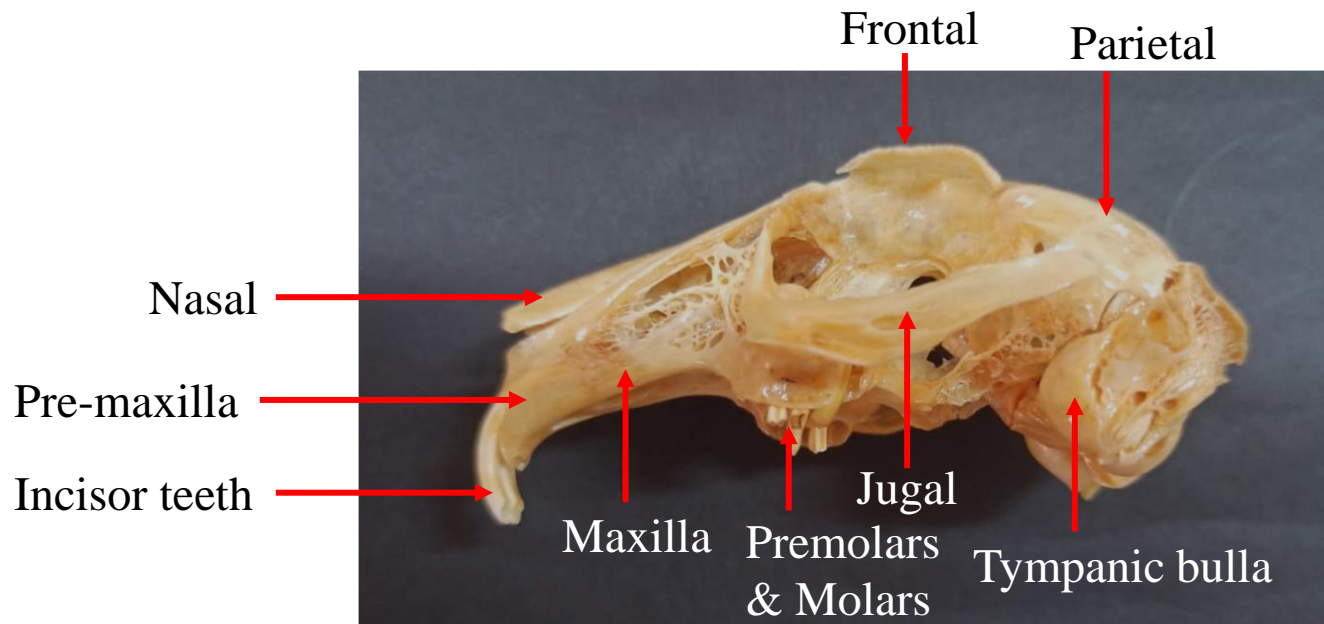
Dorsal View



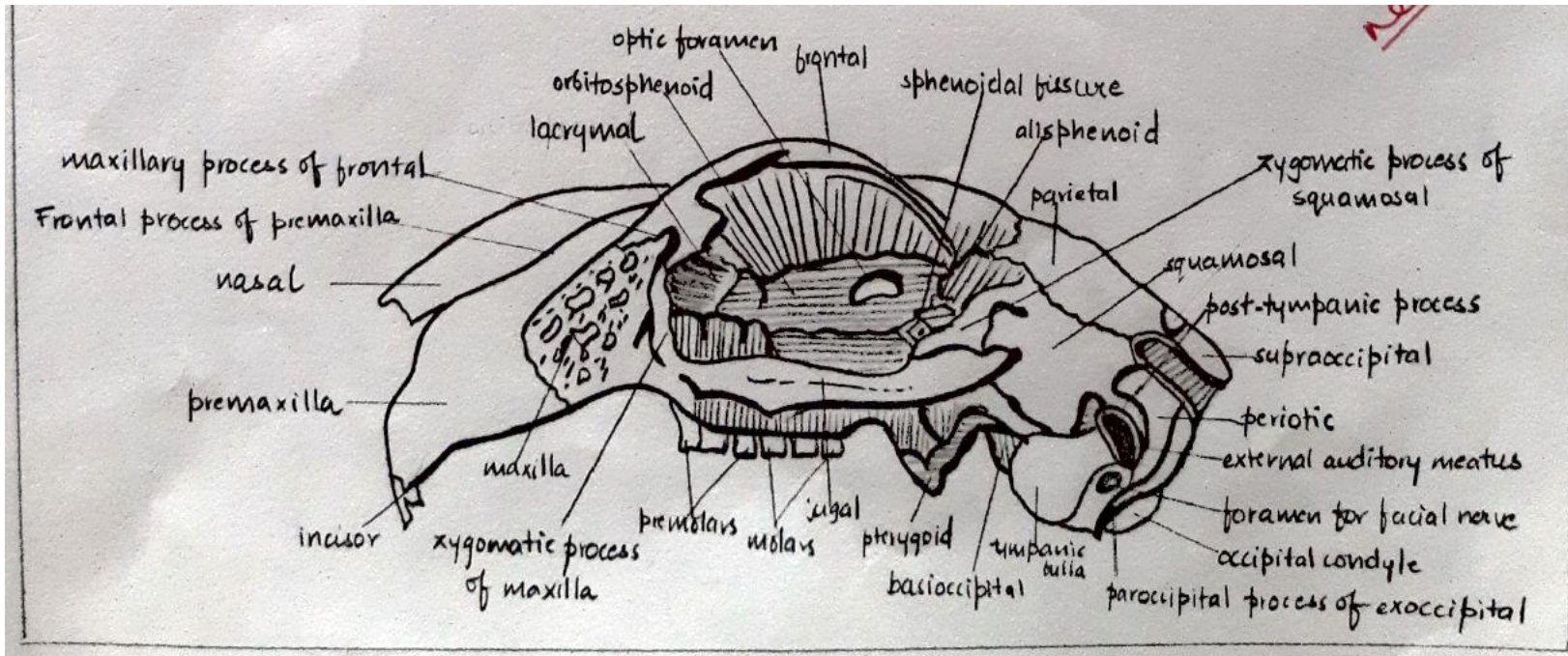
Ventral View

Incisor teeth

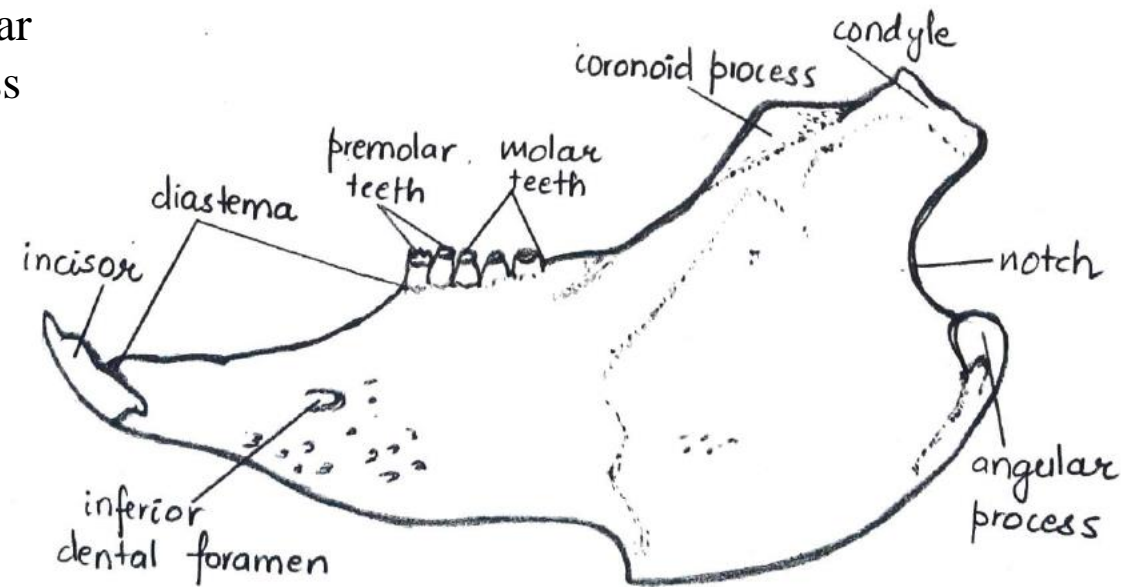
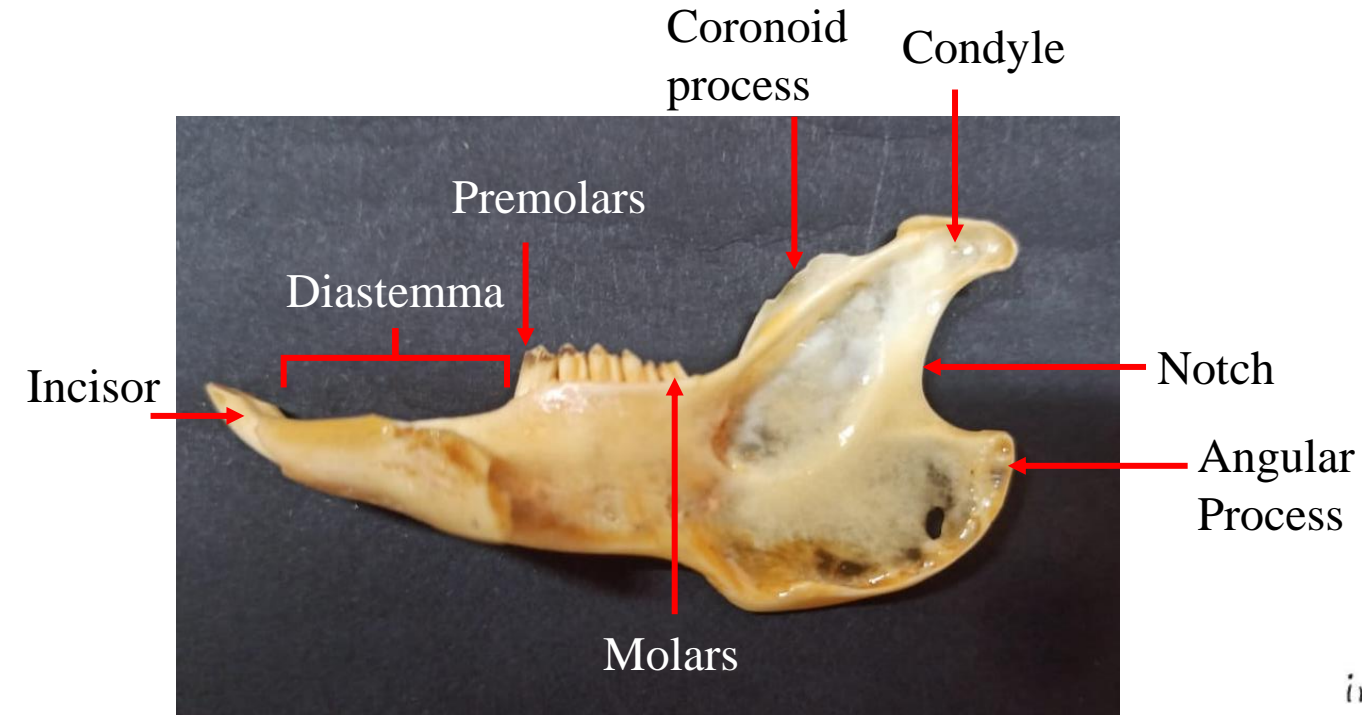




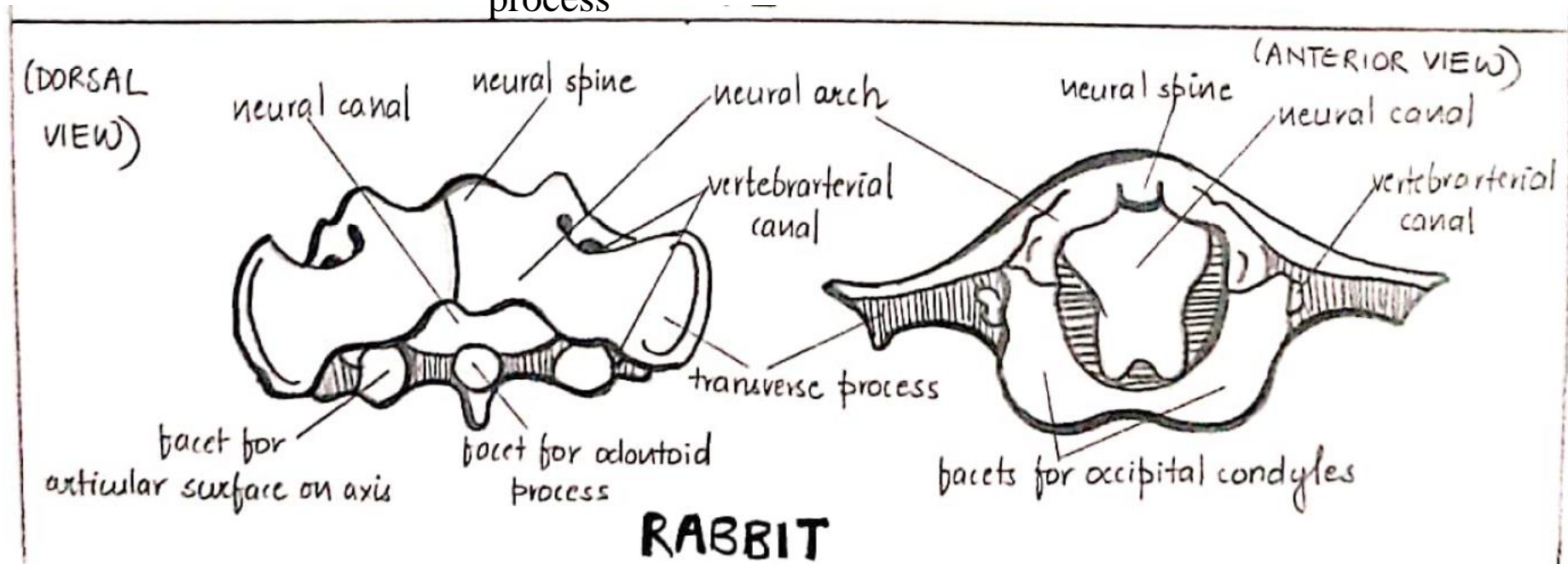
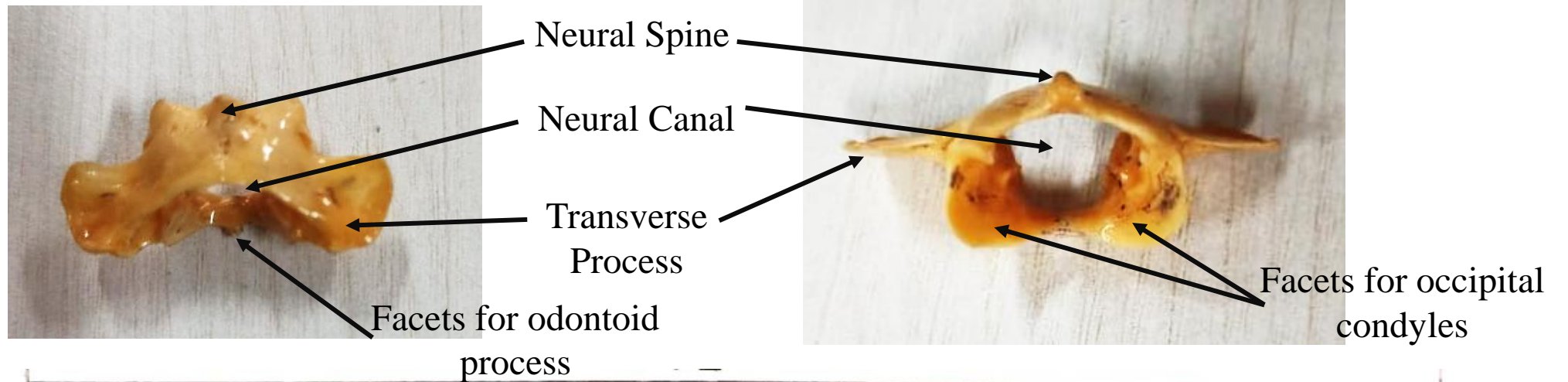
Lateral View



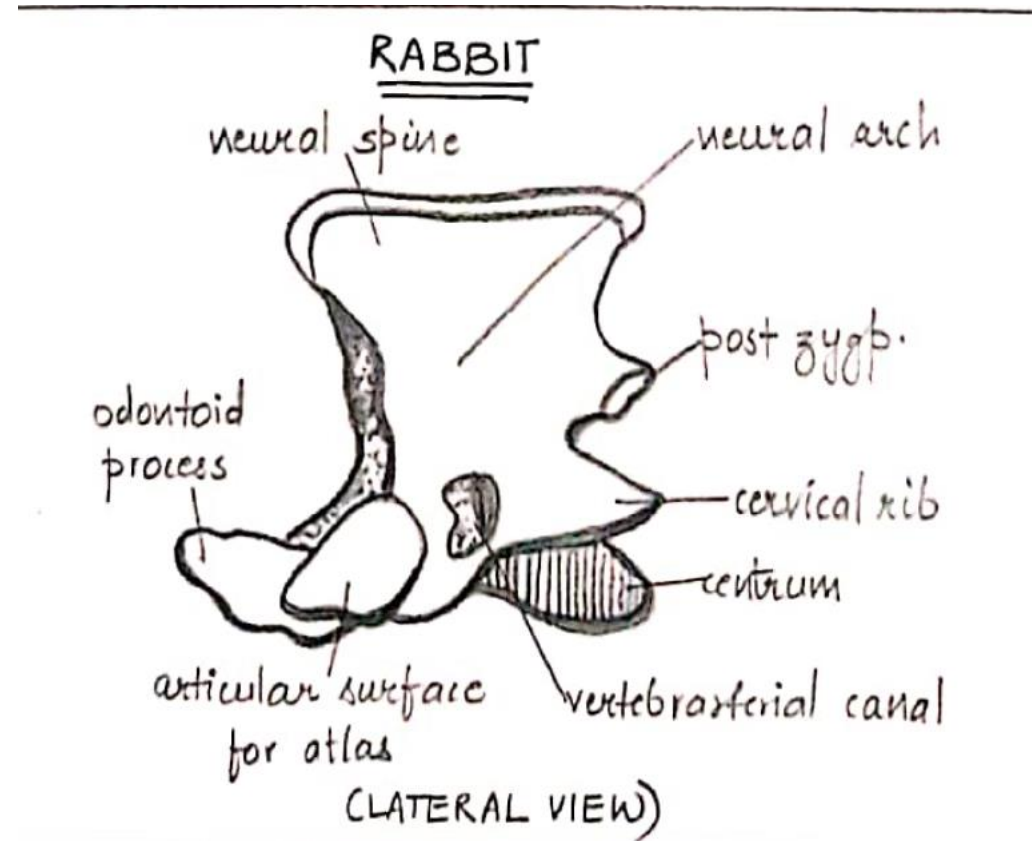
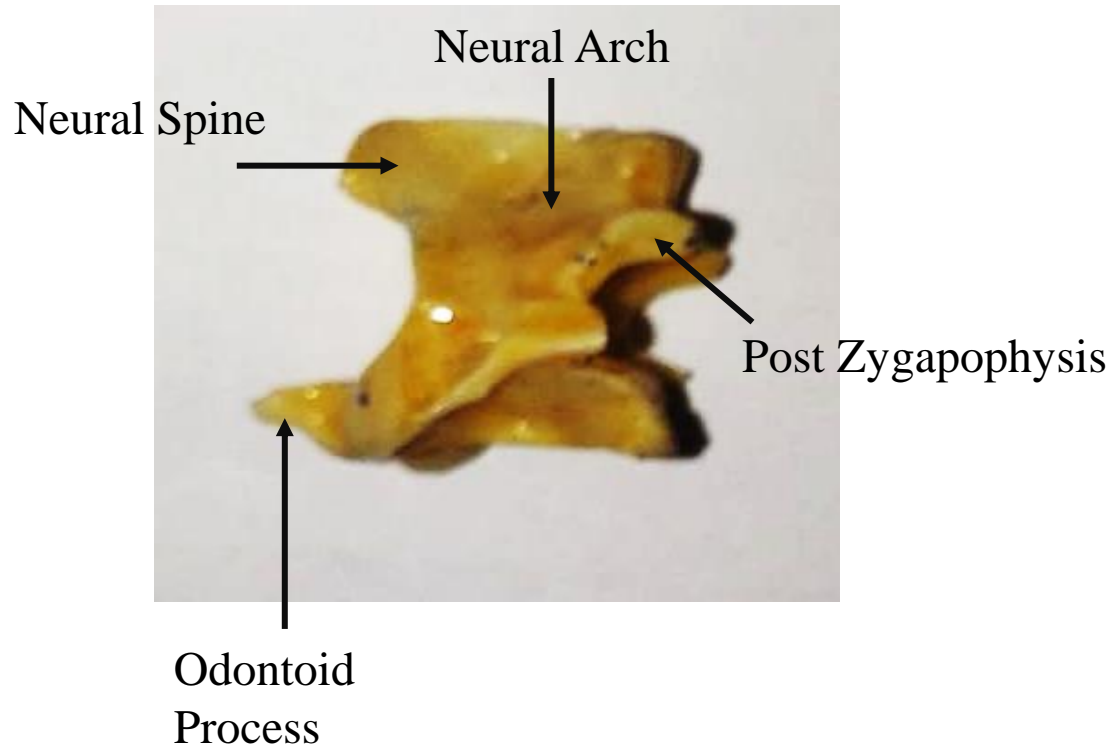
Lower Jaw



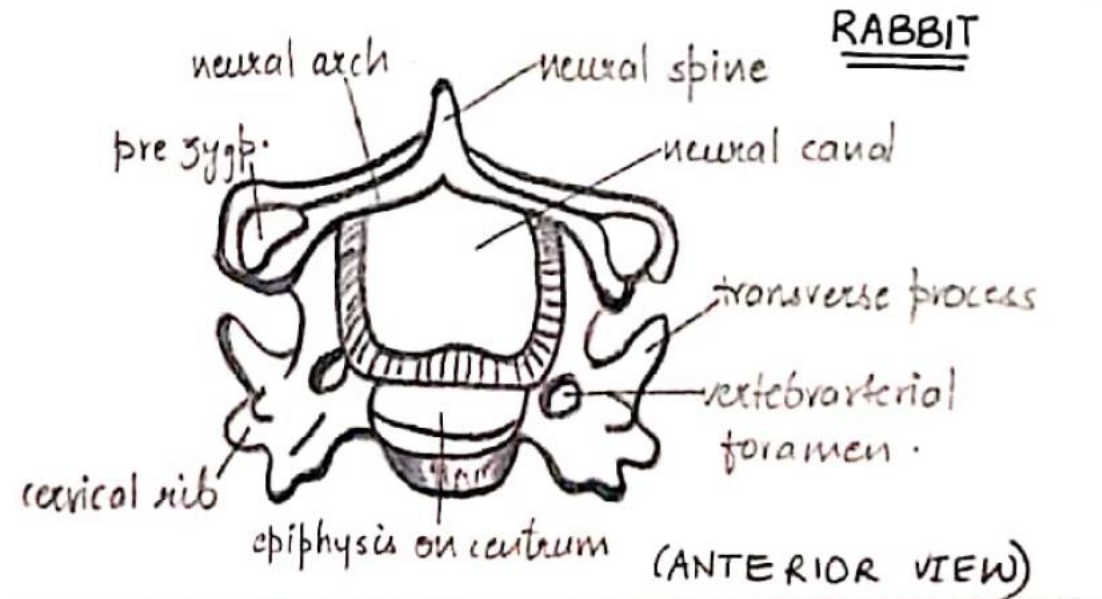
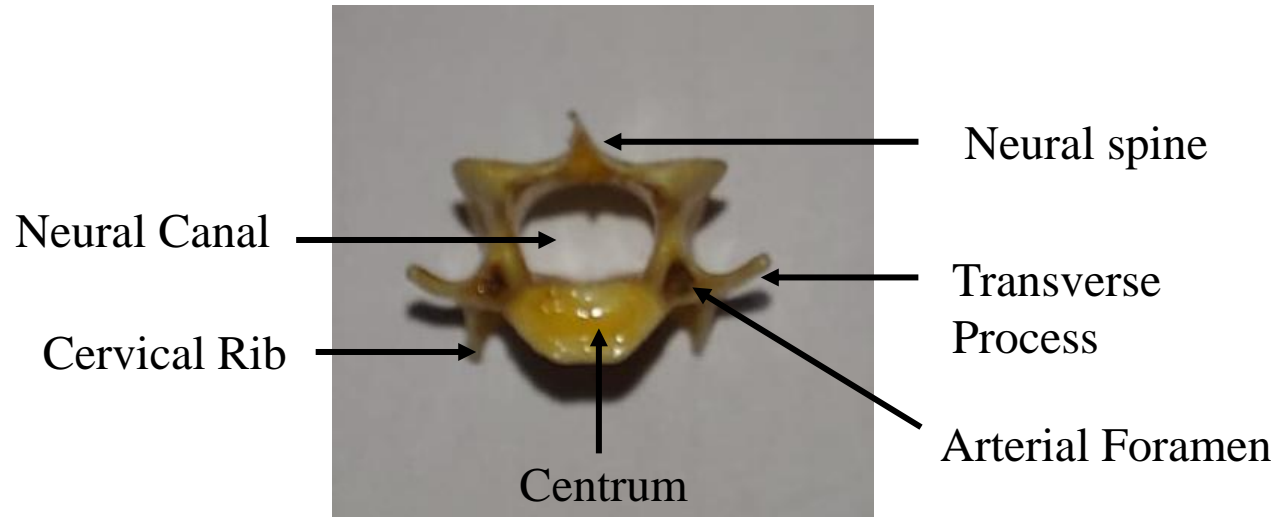
Vertebrae: Atlas



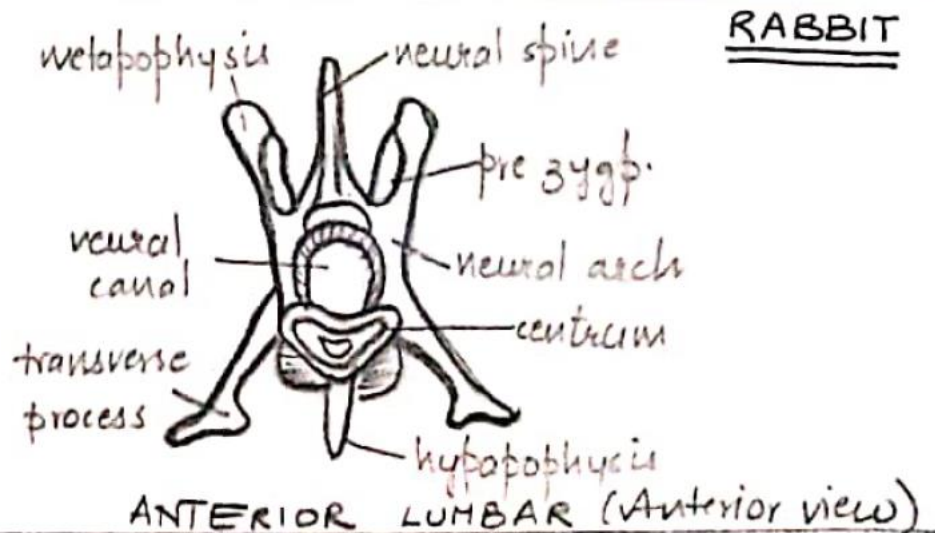
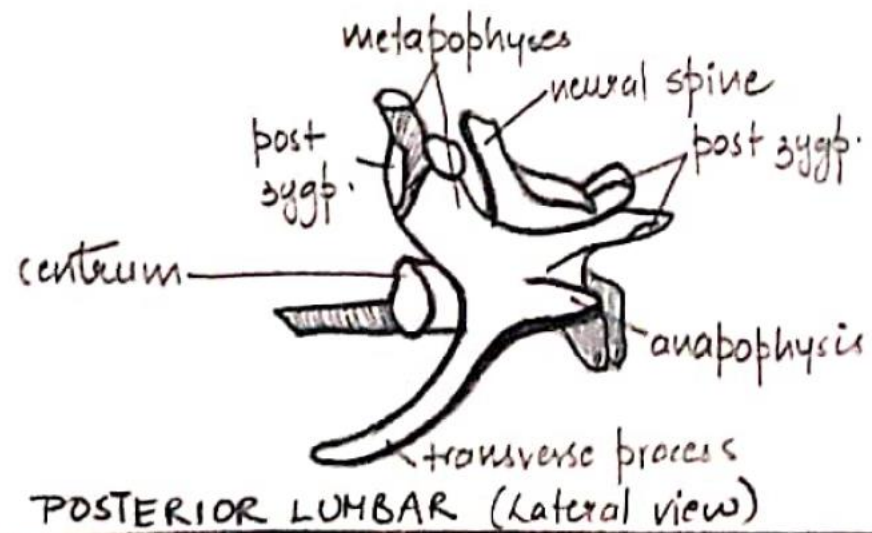
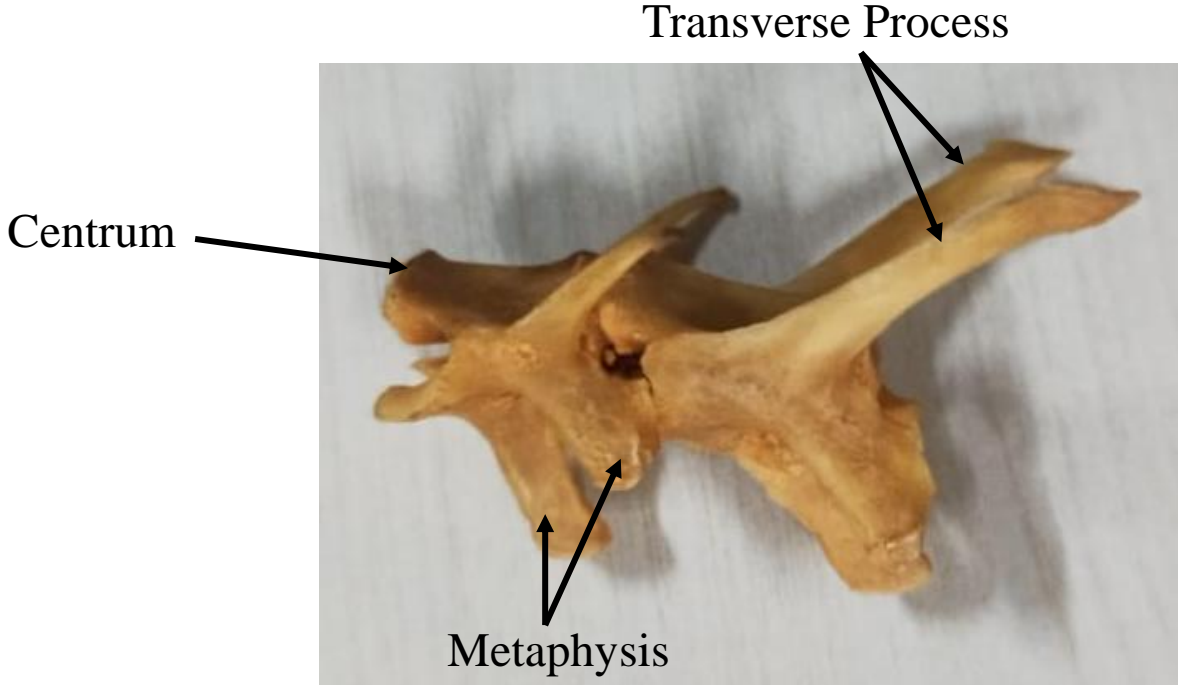
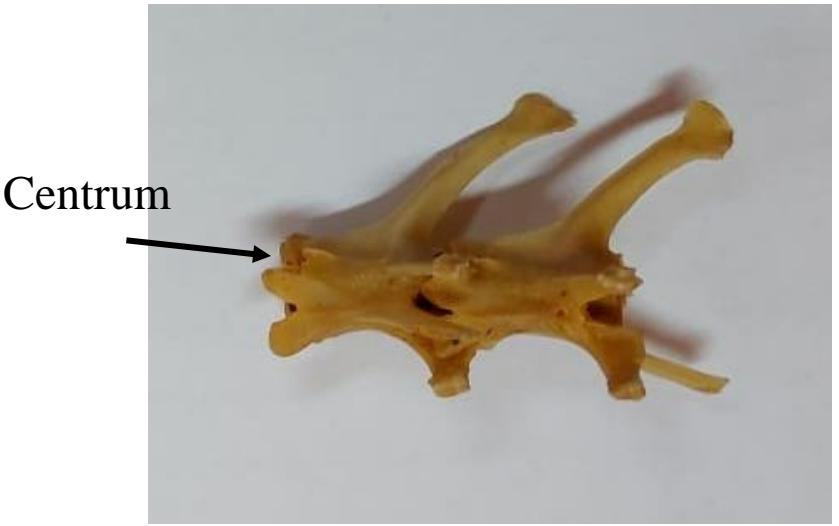
Axis Vertebra



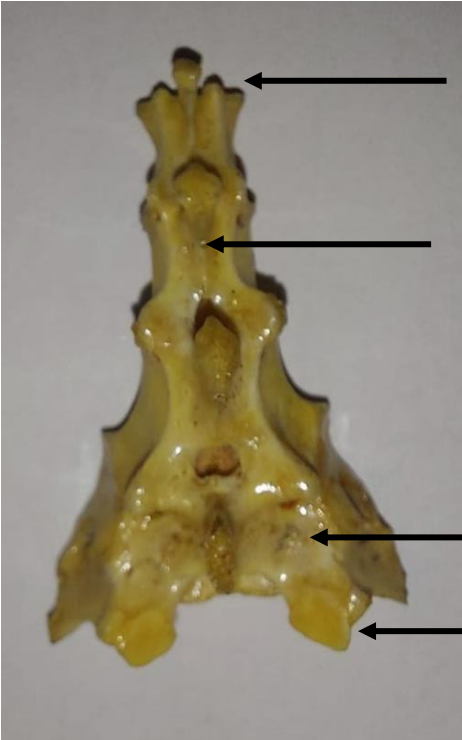
Typical Cervical Vertebra



Lumbar Vertebra



Sacrum

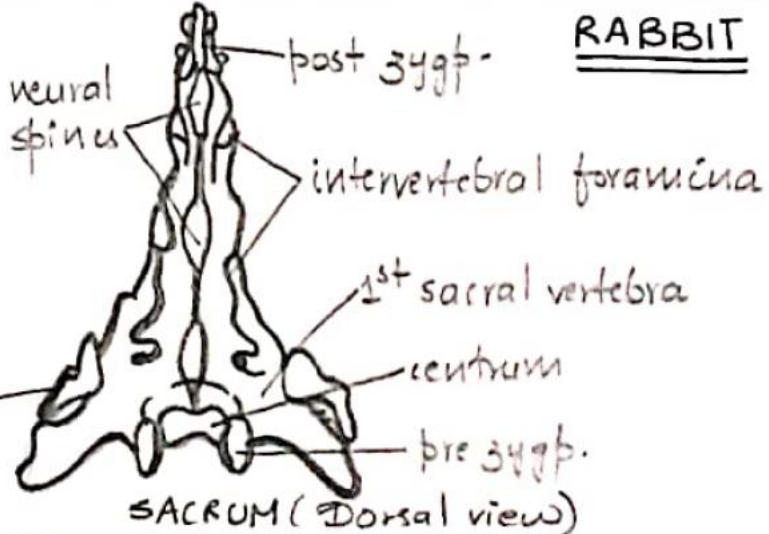
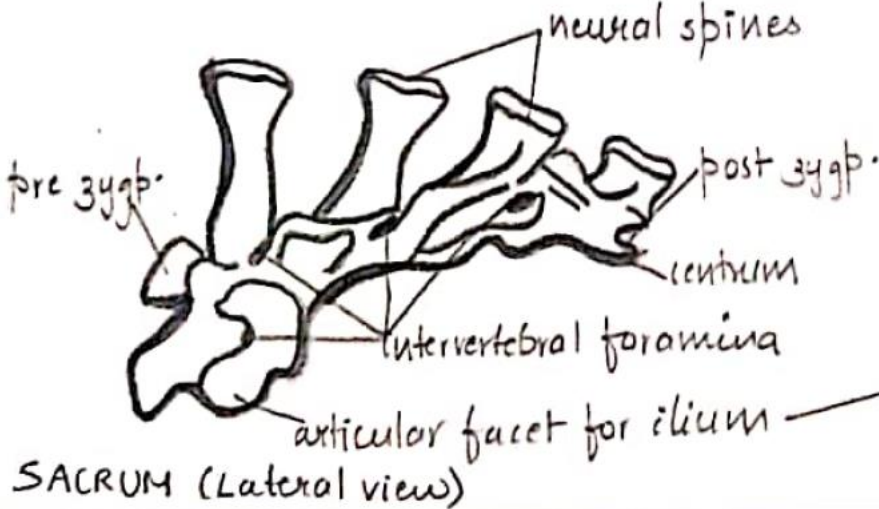


Post zygapophysis

Neural Spine

1st Sacral Vertebra

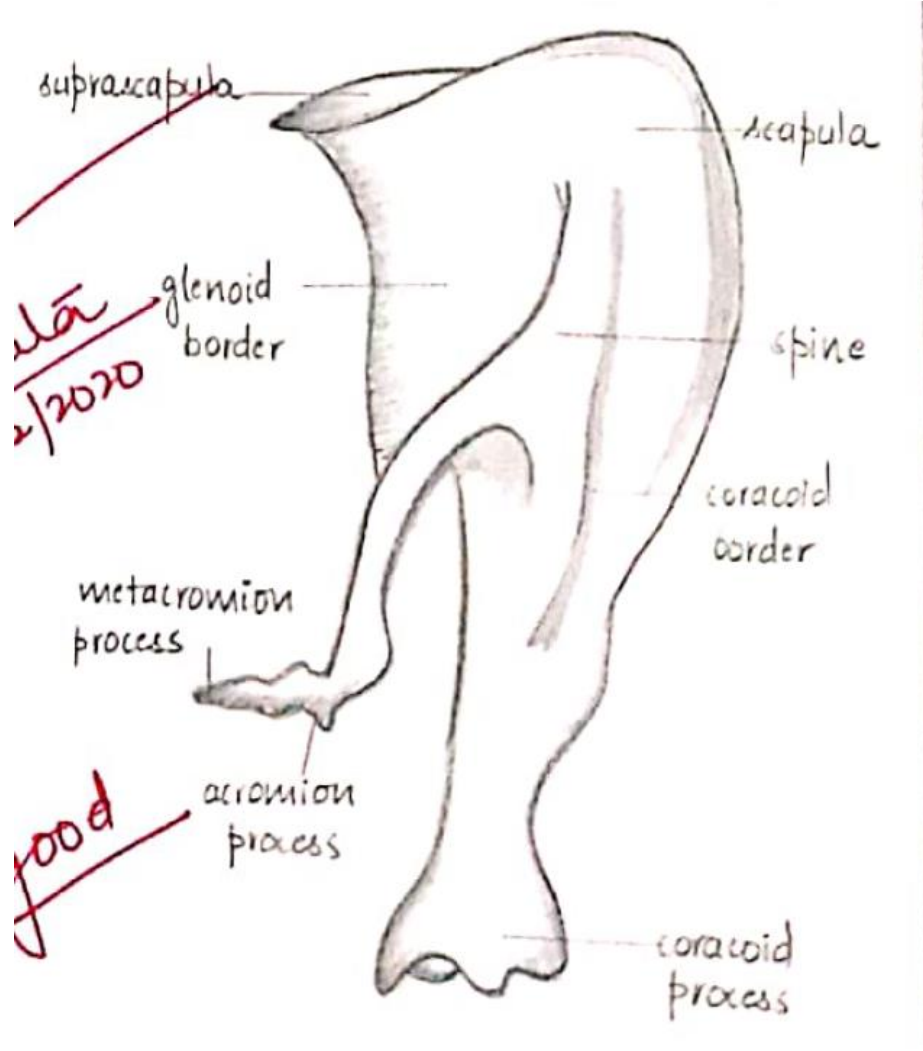
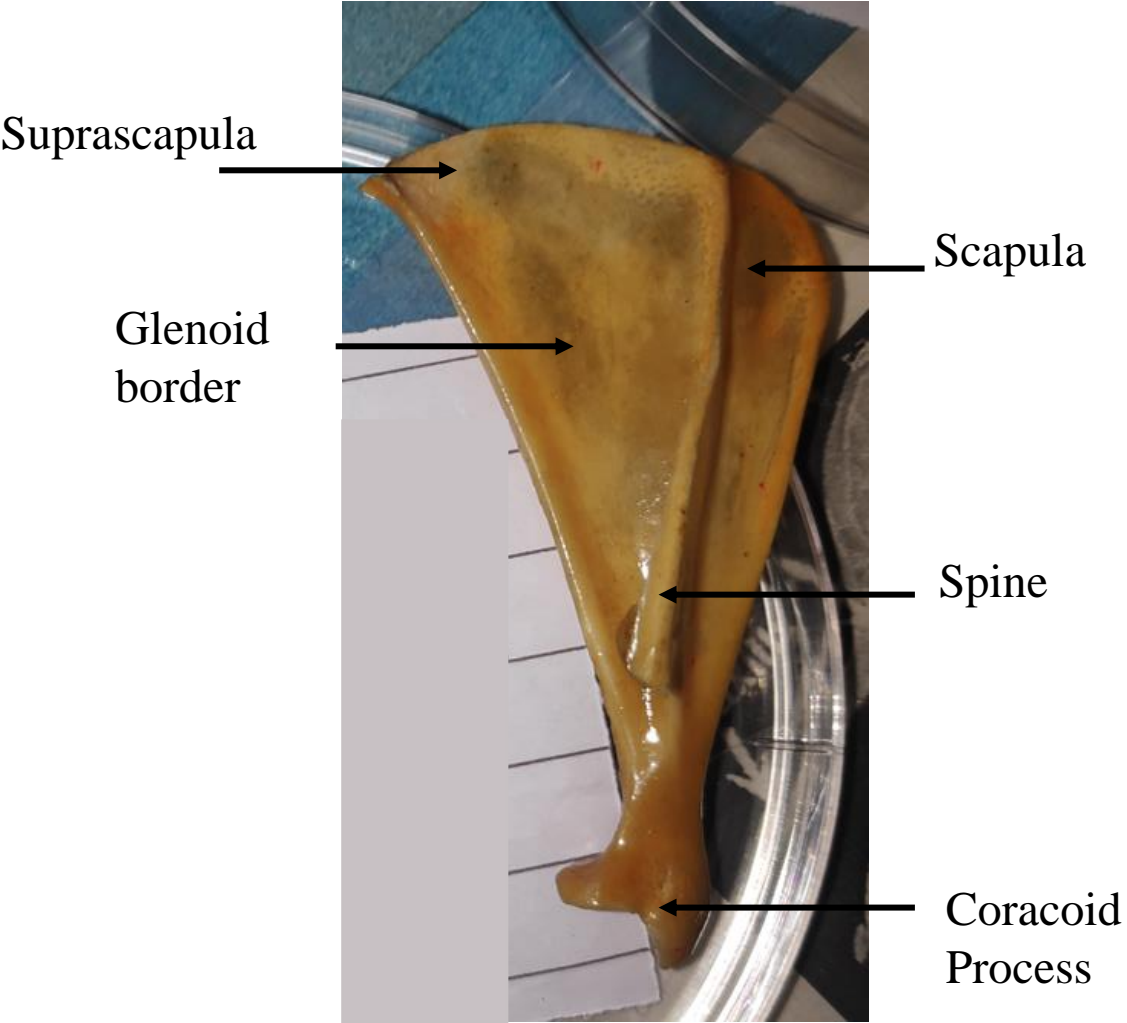
Pre zygapophysis



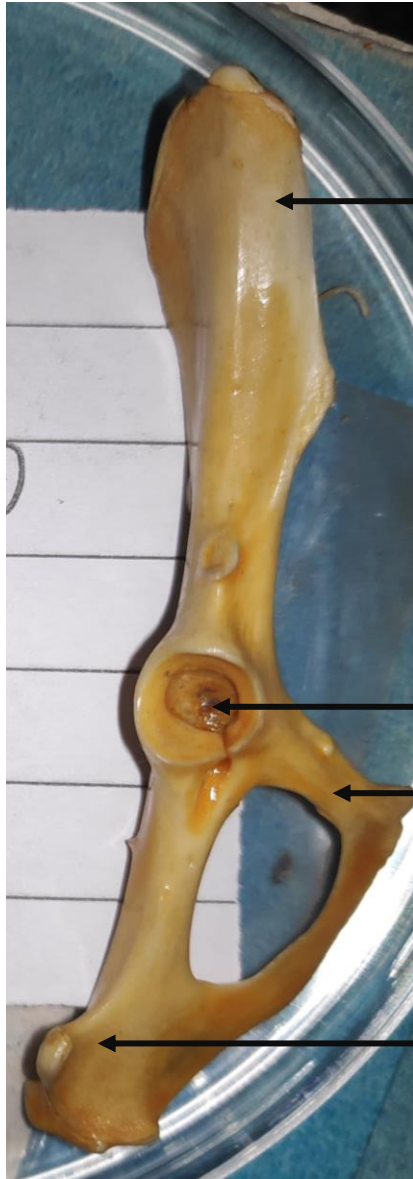
Lumbar + Sacrum



Pectoral Girdle



Pelvic Girdle

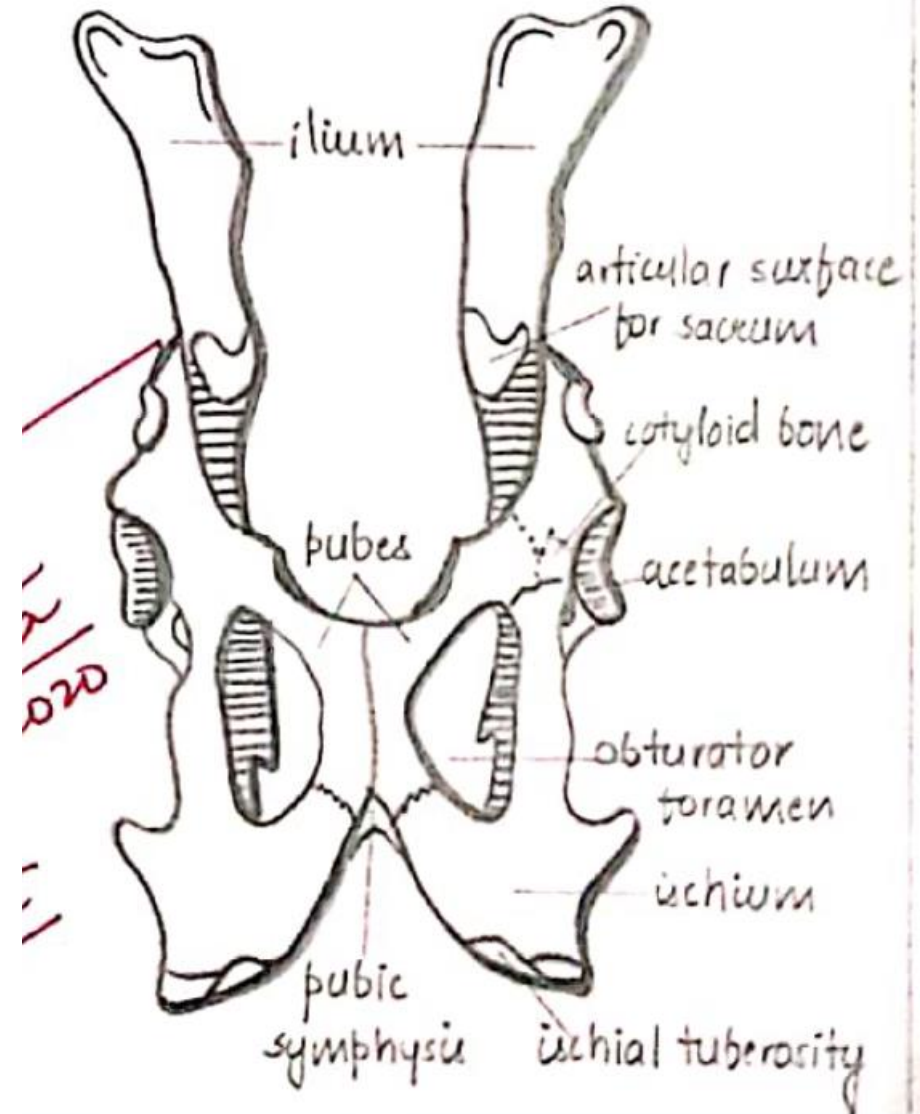


Ilium

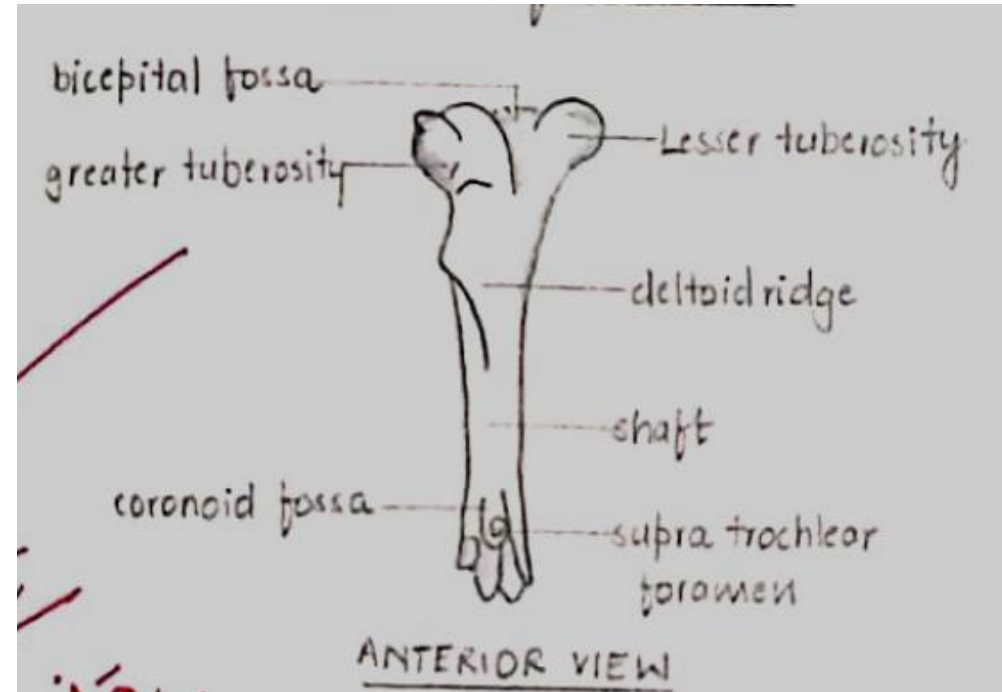
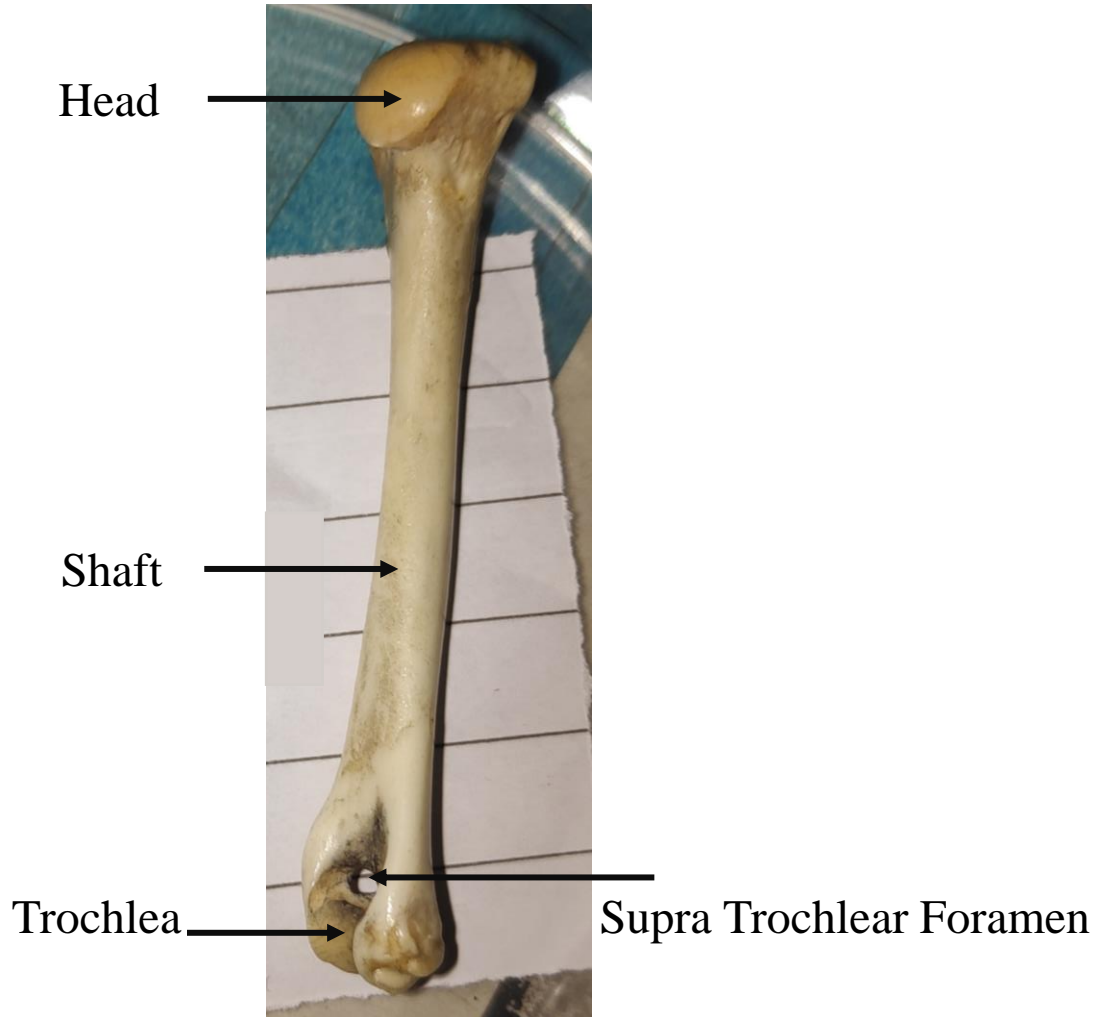
Acetabulum

Pubic bone

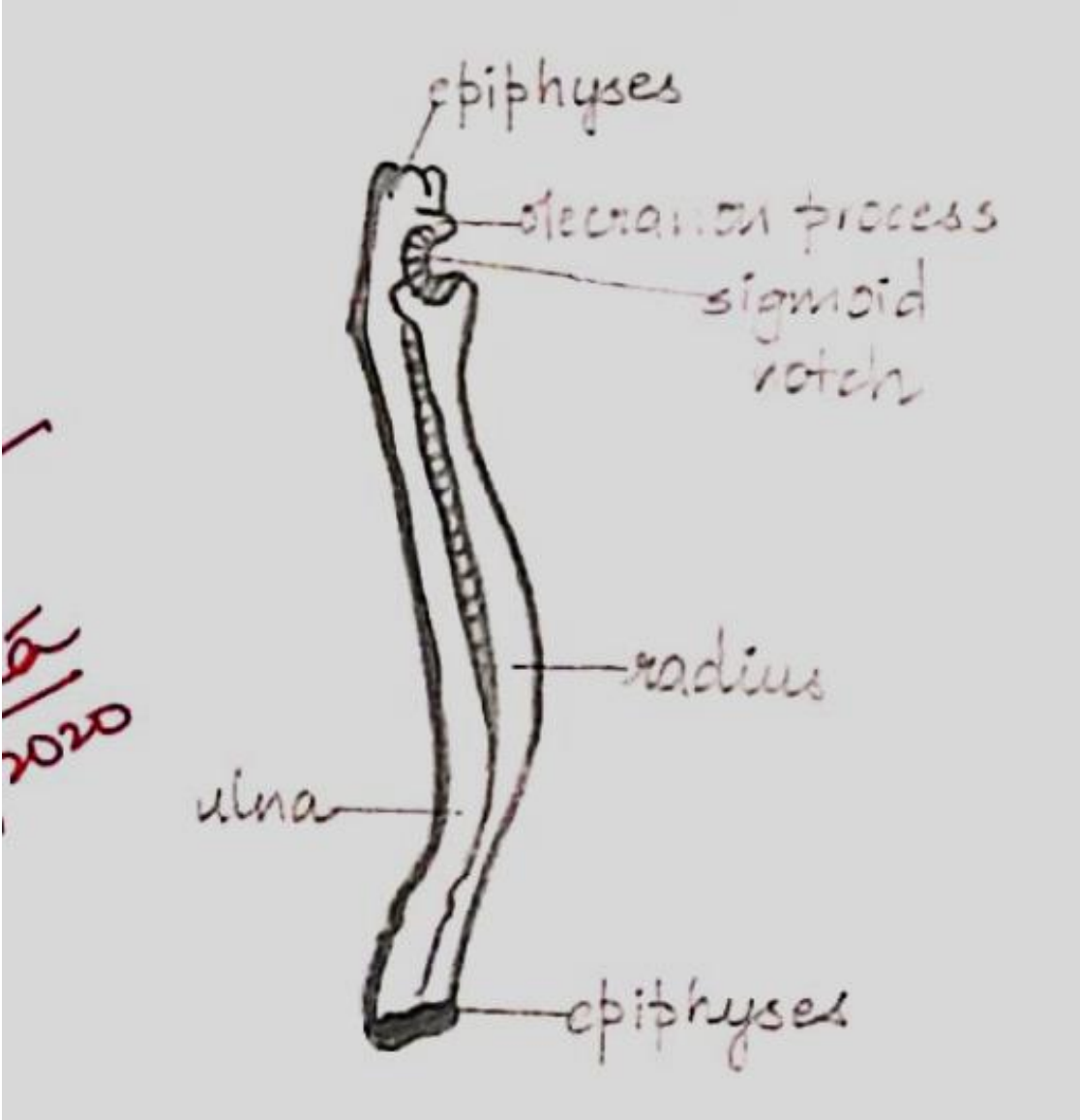
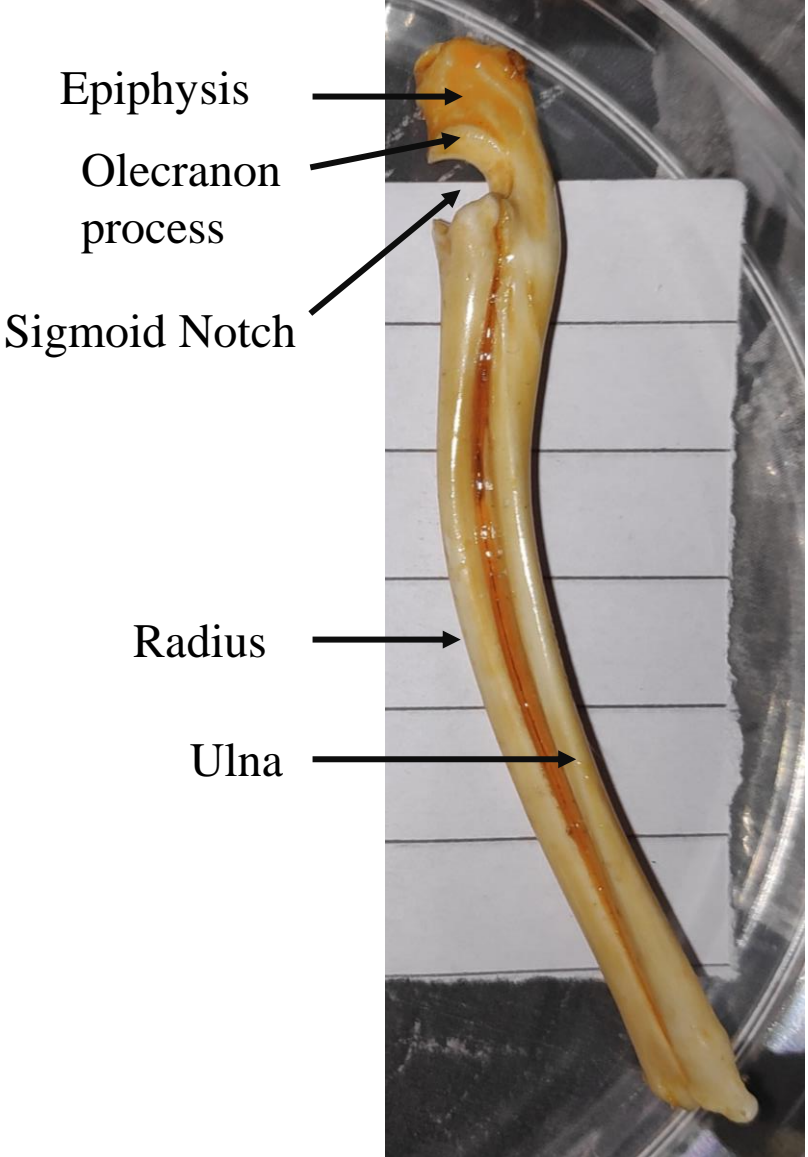
Ischium



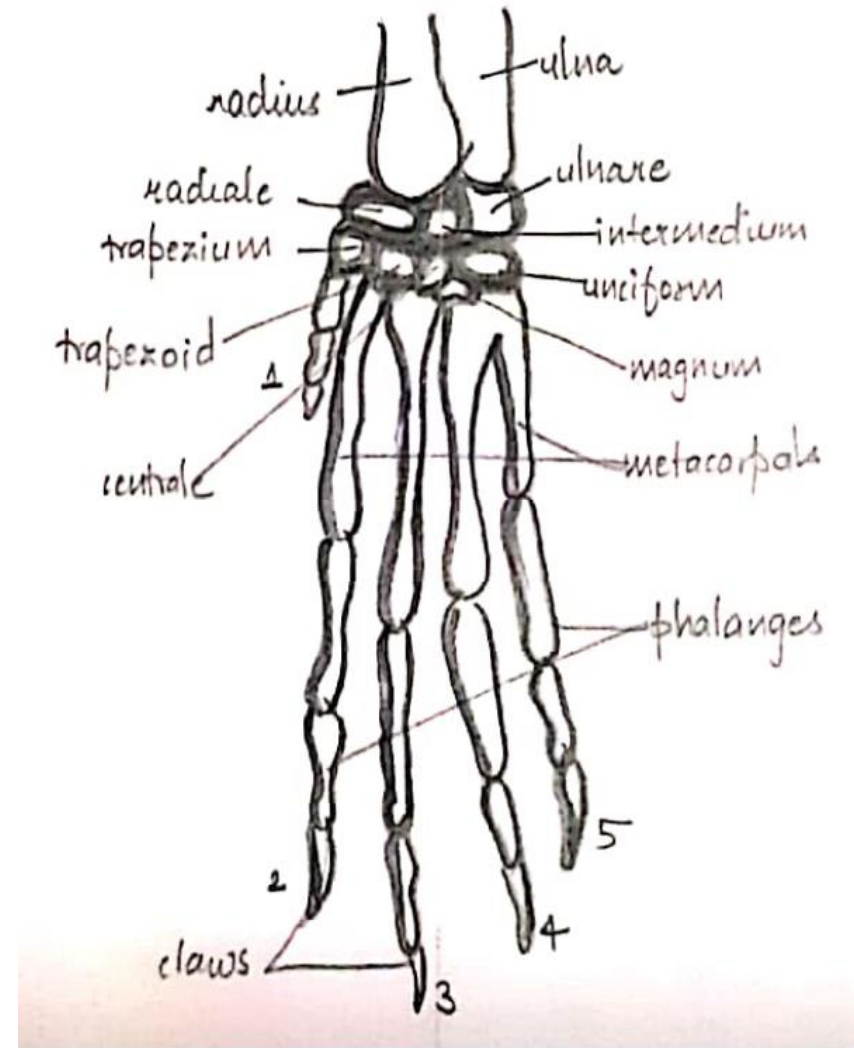
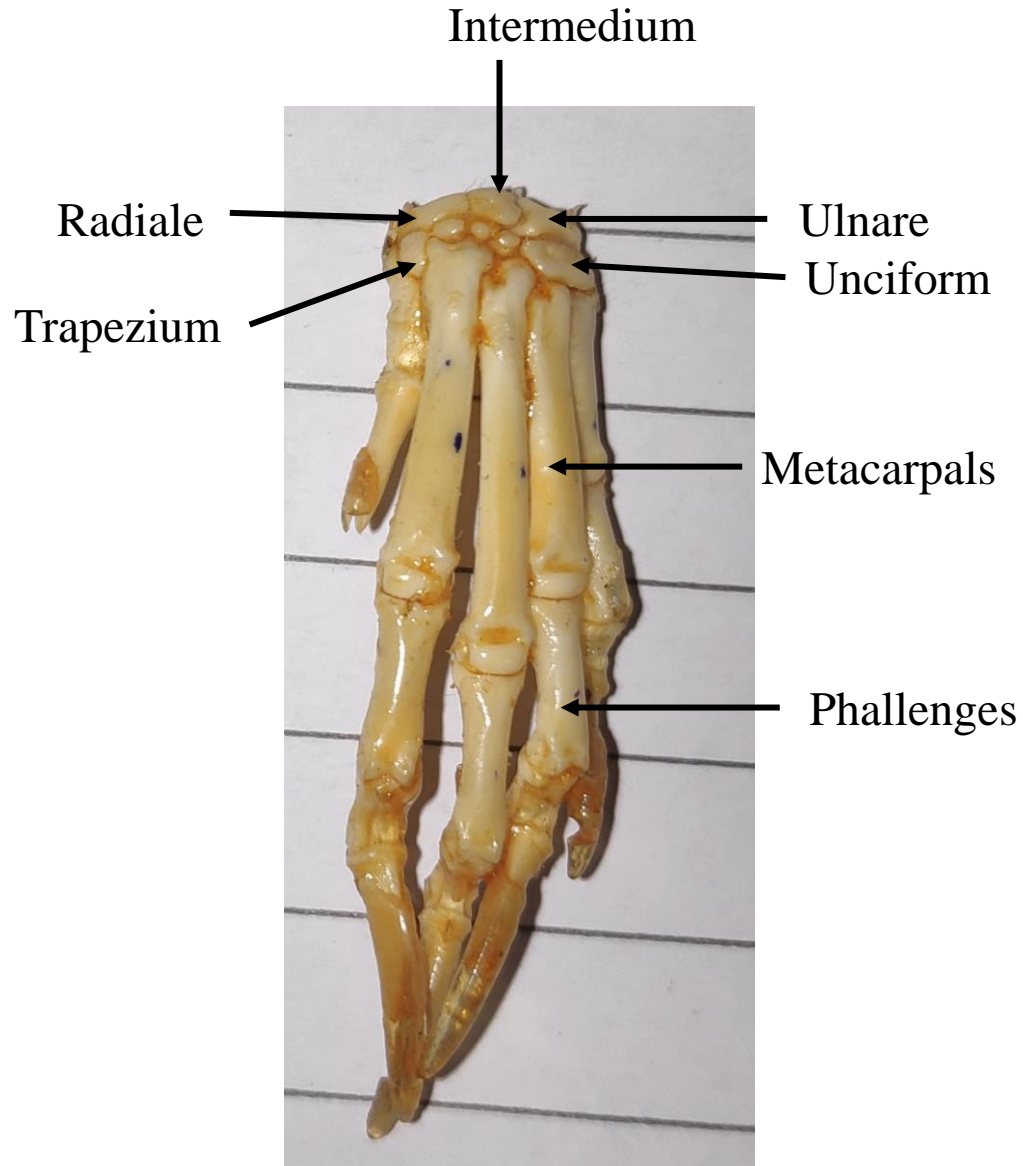
Fore Limbs Humerus



Radius Ulna

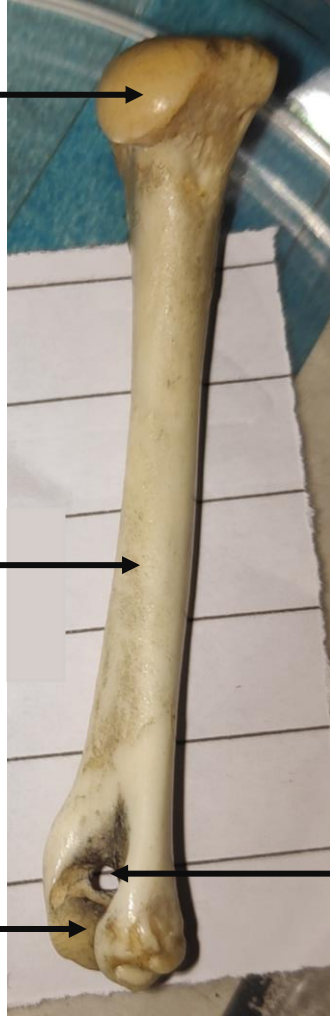


Bones of Hand



Fore Limbs

Humerus



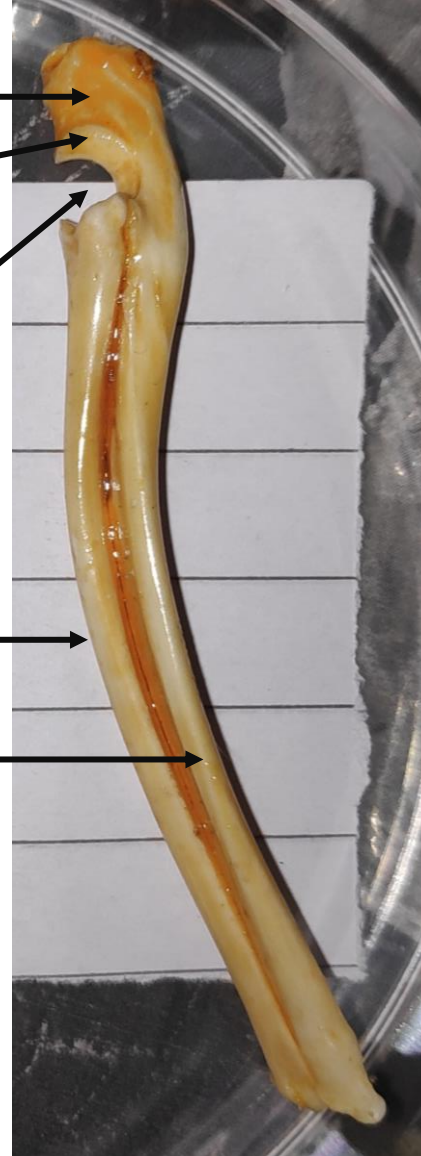
Head

Shaft

Trochlea

Supra Trochlear Foramen

Radius Ulna



Epiphysis

Olecranon process

Sigmoid Notch

Radius

Ulna

Bones of Hand



Intermedium

Radiale

Trapezium

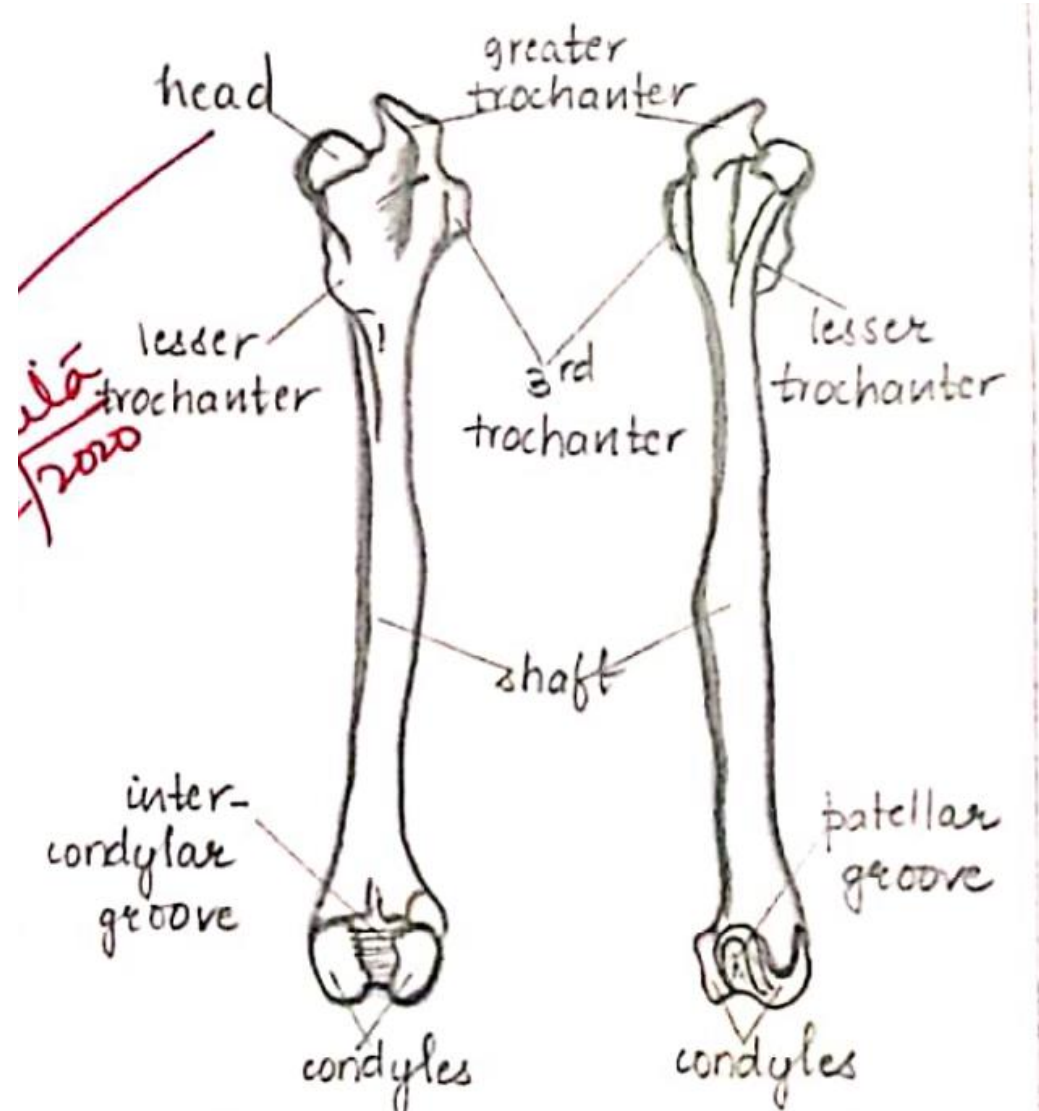
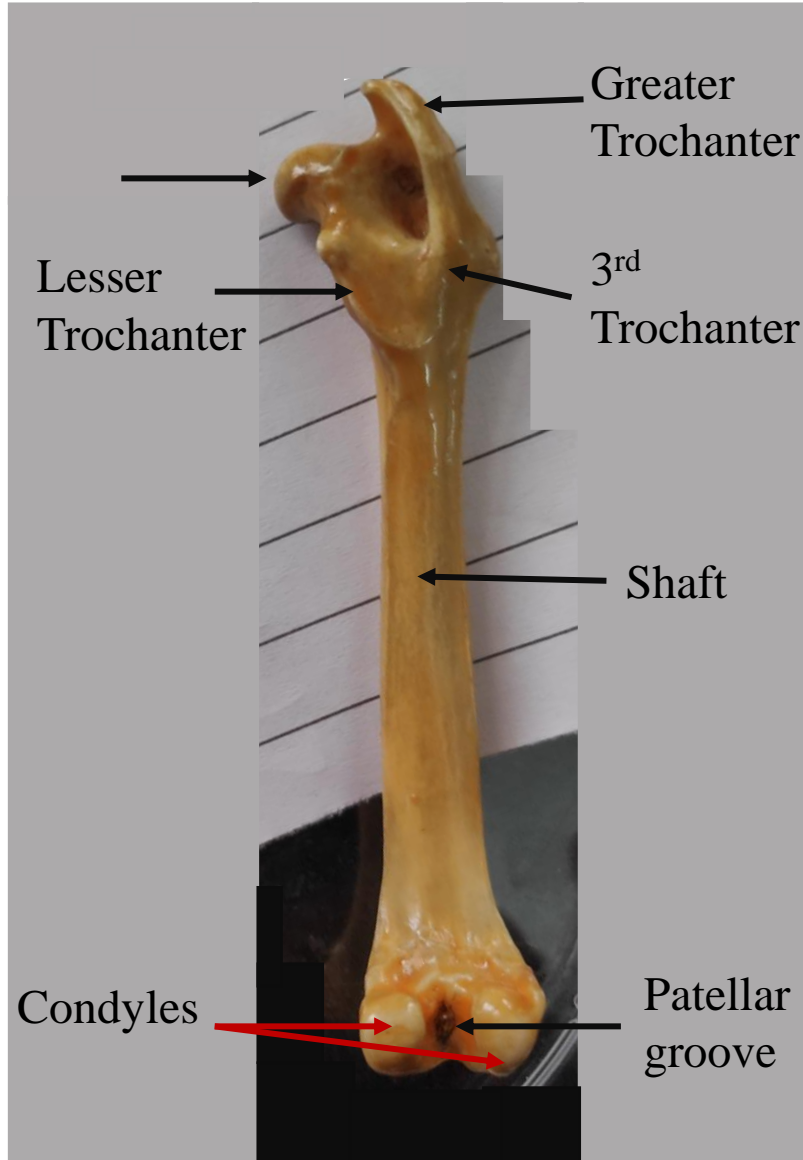
Ulnare
Unciform

Metacarpals

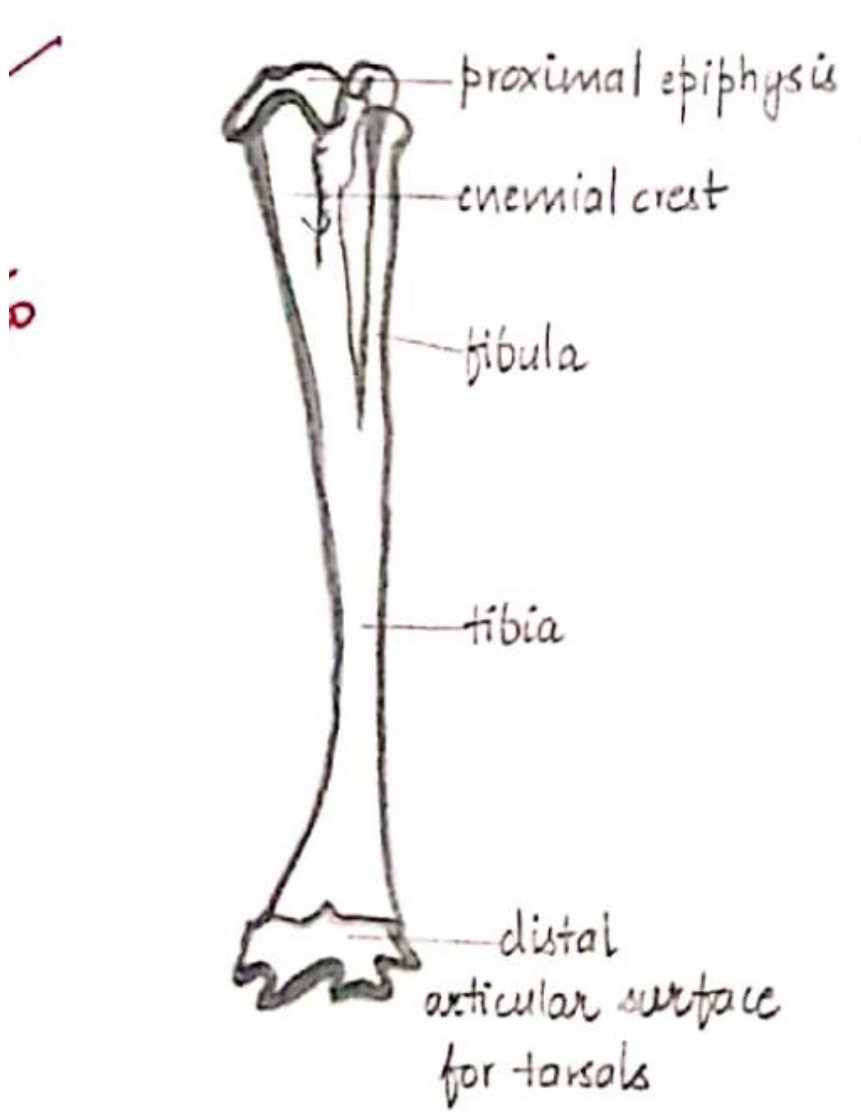
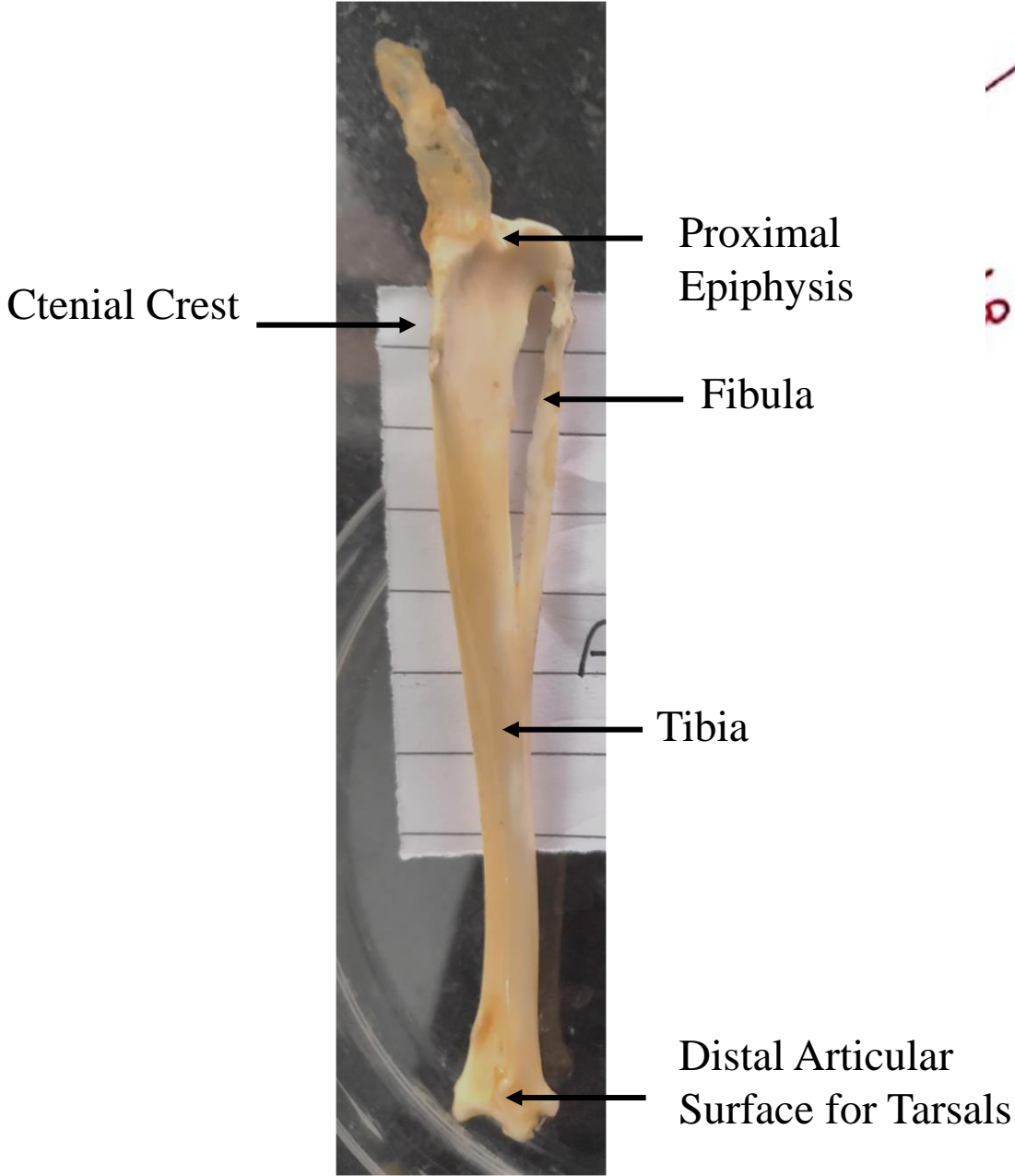
Phalanges

Hind Limbs

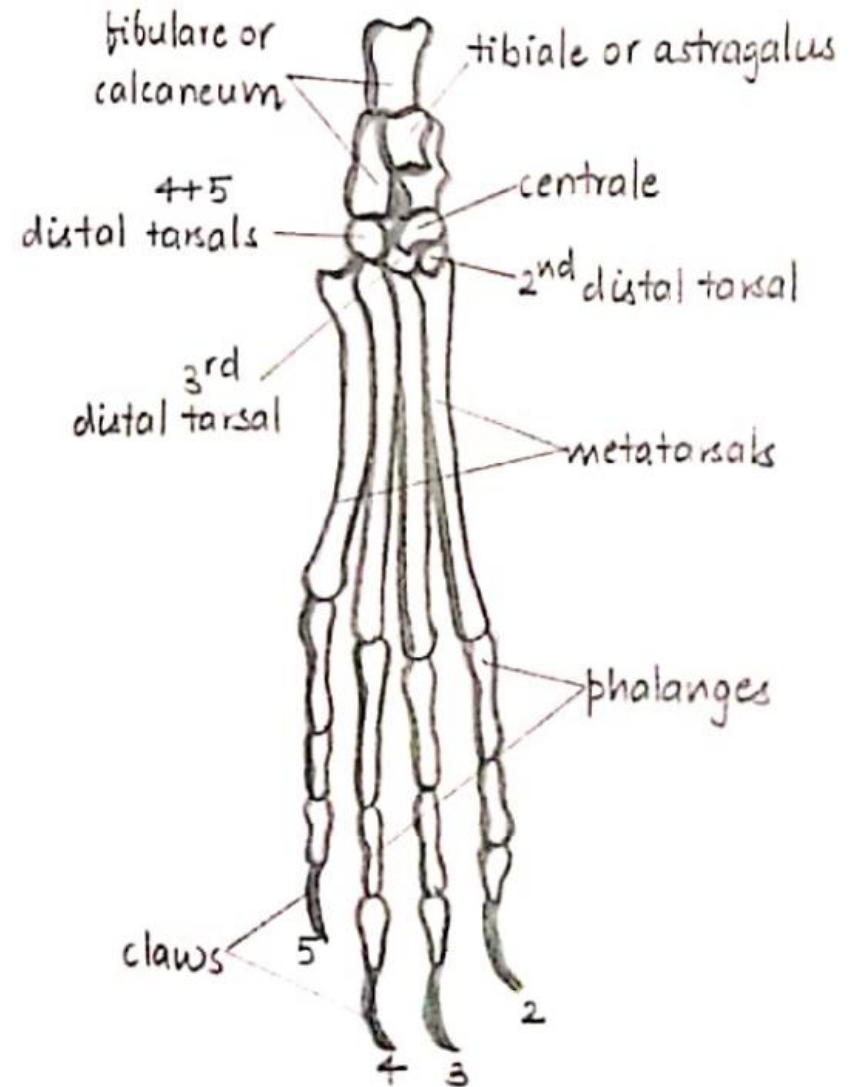
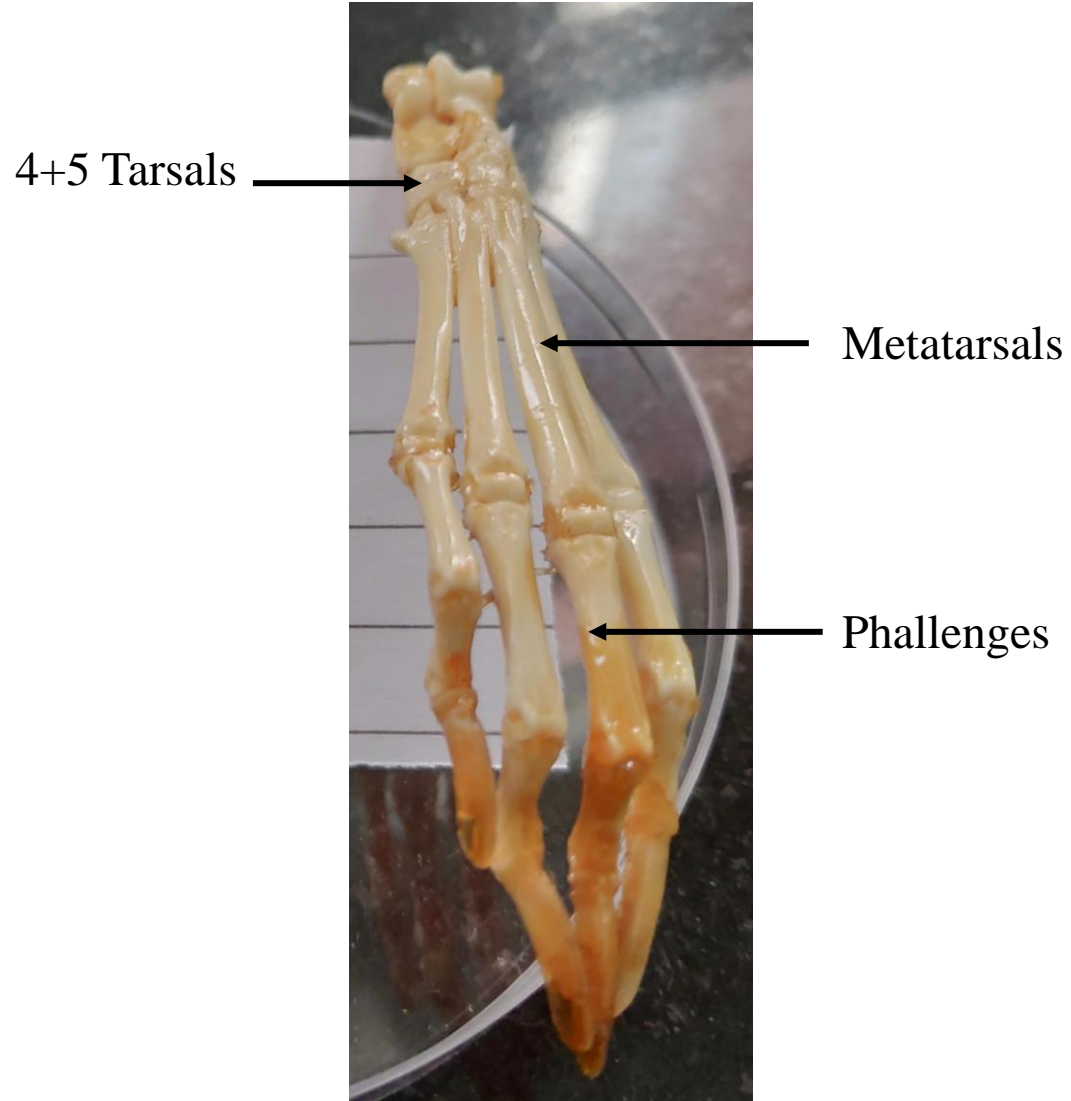
Femur

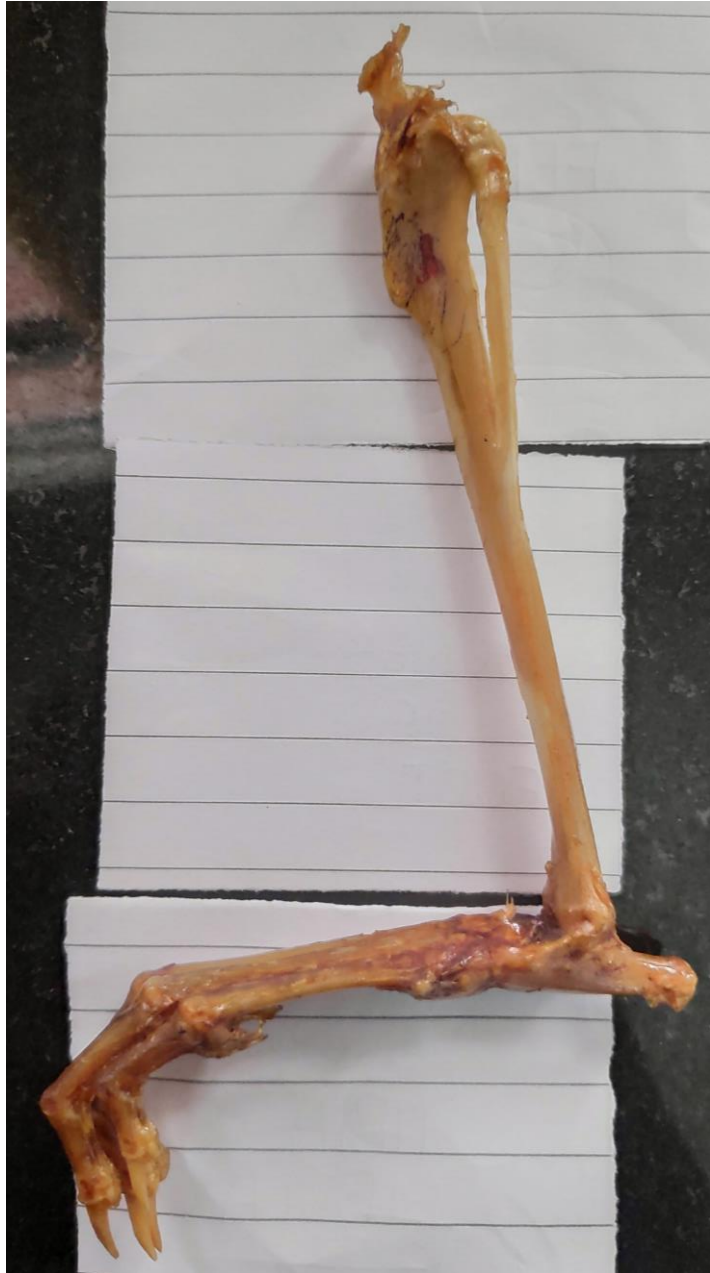


Tibio Fibula



Bones of Foot

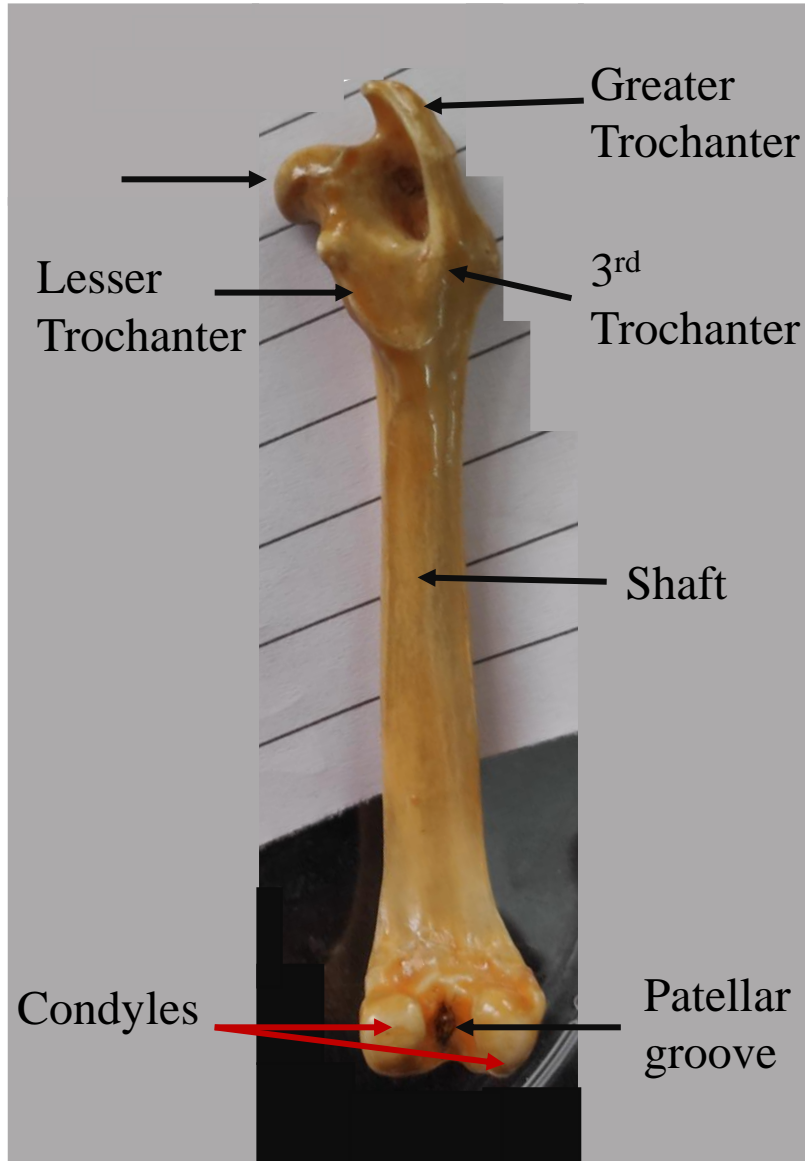




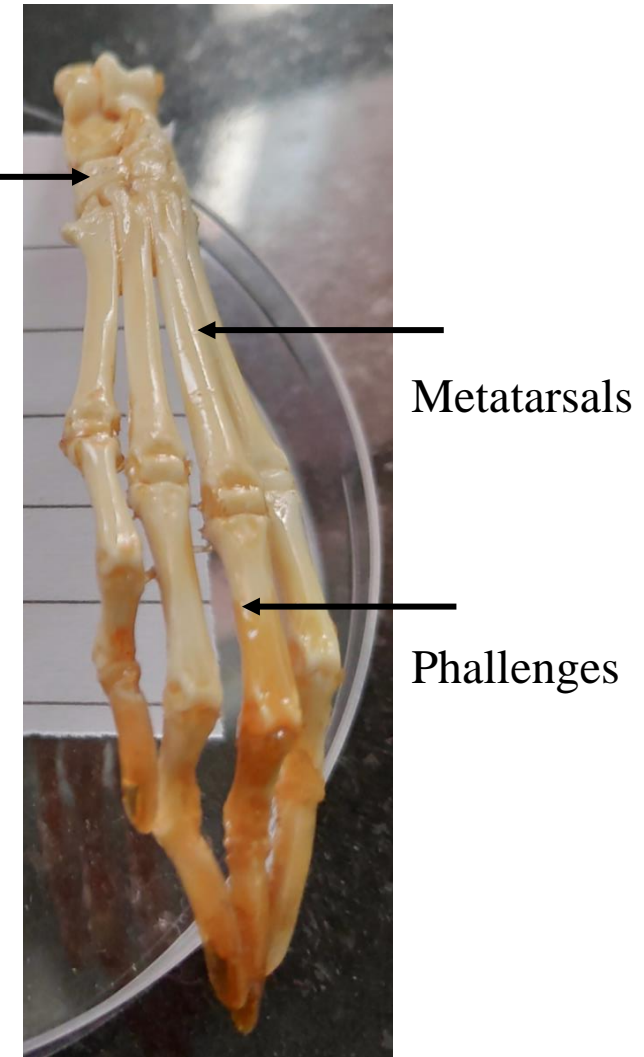
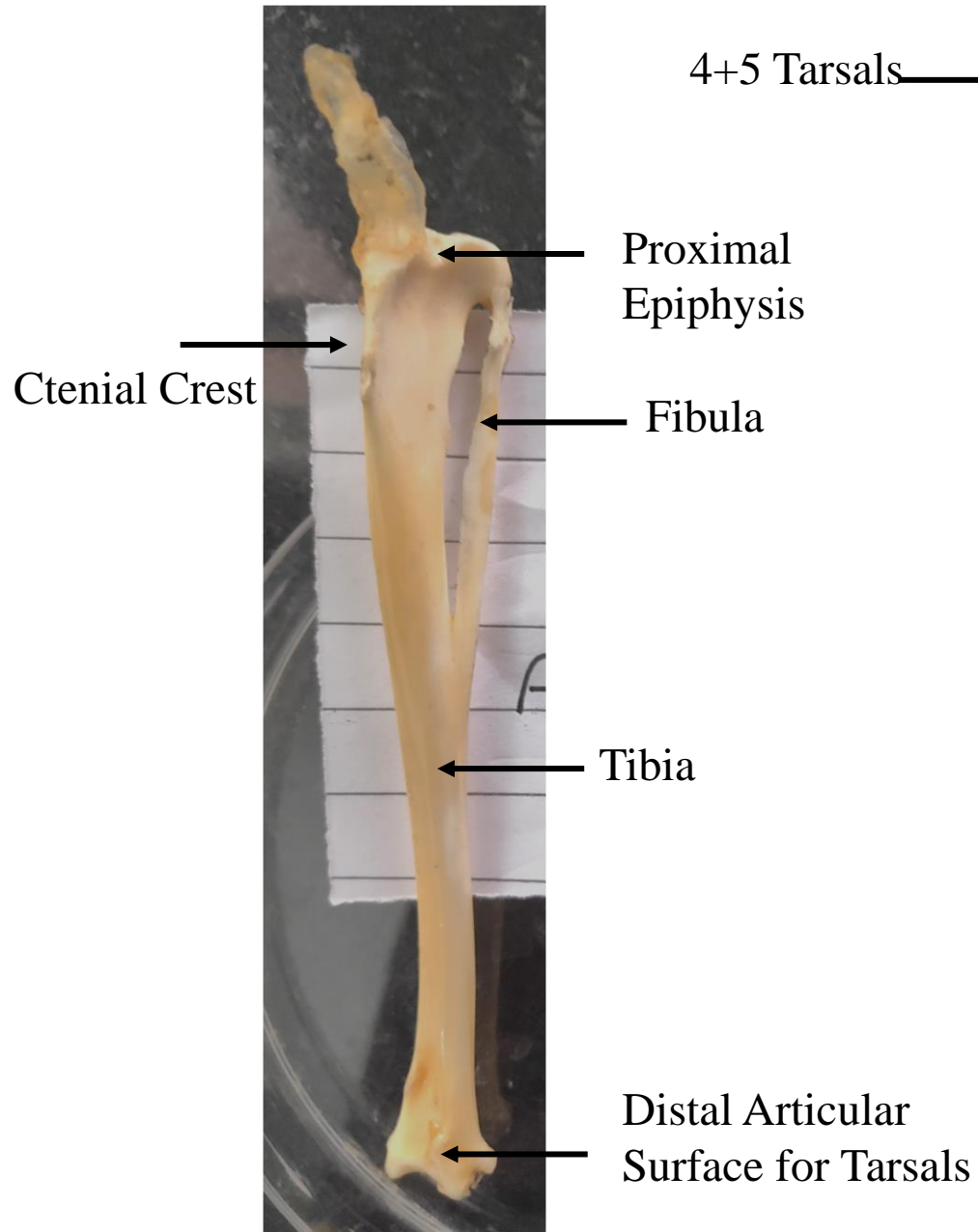
Tibio Fibula and Bones of Foot

Hind Limbs

Femur



Tibio Fibula



Bones of Foot