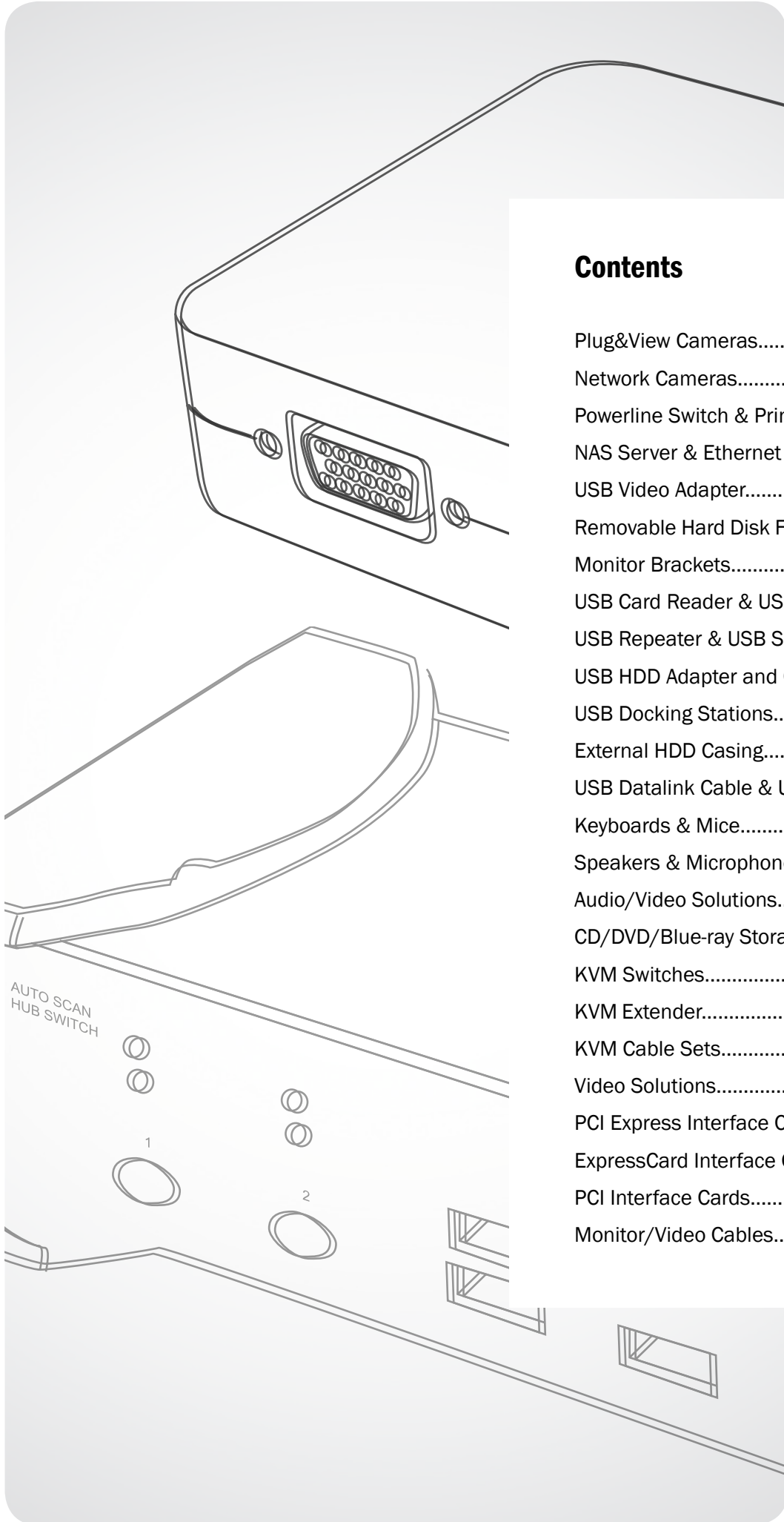




Main Catalog 2013

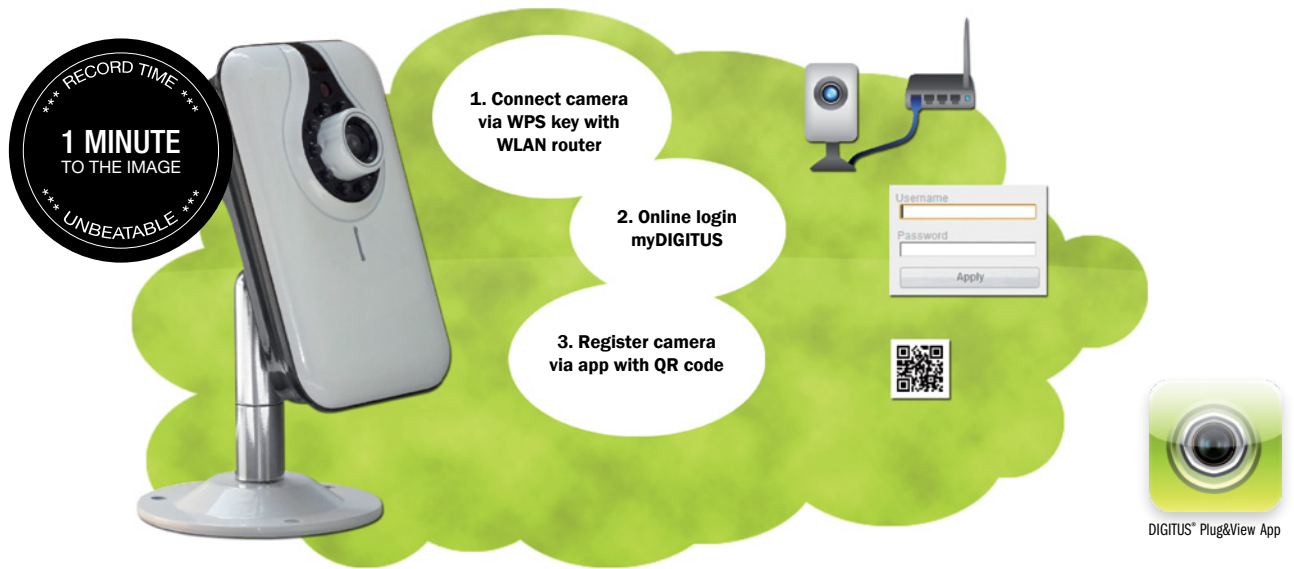




Contents

Plug&View Cameras.....	4 - 5
Network Cameras.....	6 - 7
Powerline Switch & Print Server.....	8 - 9
NAS Server & Ethernet Switch.....	10 - 11
USB Video Adapter.....	12
Removable Hard Disk Frame.....	13
Monitor Brackets.....	14 - 16
USB Card Reader & USB Hubs.....	17 - 19
USB Repeater & USB Sharing Switches.....	20 - 21
USB HDD Adapter and Cable.....	22 - 23
USB Docking Stations.....	24
External HDD Casing.....	25
USB Datalink Cable & USB-Special Adapter.....	26 - 27
Keyboards & Mice.....	28 - 30
Speakers & Microphones.....	31 - 32
Audio/Video Solutions.....	33
CD/DVD/Blue-ray Storage.....	34
KVM Switches.....	35 - 44
KVM Extender.....	45
KVM Cable Sets.....	46 - 47
Video Solutions.....	48 - 53
PCI Express Interface Cards.....	54 - 56
ExpressCard Interface Cards.....	57 - 59
PCI Interface Cards.....	60 - 63
Monitor/Video Cables.....	64 - 65

DIGITUS® Plug&View Security Cameras



Common network cameras require substantial efforts and professional technical know-how to install and configure cameras. The biggest problem herewith is the availability from the outside to the Internet.

Necessary information and configuration are often:

- Firewall and router ports must be released
- The respective IP address must be known.
- An external service such as DynamicDNS must be installed so that the camera can generally be addressed via the Internet.
- A network router must be linked to the own network.
- The network router must be linked to an external service provider.

DIGITUS® Network Cameras use a new and innovative way for the installation: The Online Service “myDIGITUS” and the individual code of every camera produce automatically a connection between user and camera. That makes a time consuming and complex installation obsolete.

With the help of the installation assistant the camera is ready for use within several minutes. After registering the camera in the “myDIGITUS” portal it will be recognized automatically and the camera will be added to the user account. Now the camera can be accessed from anywhere via PC, Smartphone or Tablet to view the snapshots or video recordings or to adjust the settings.

Camera properties				
Products	DIGITUS® OptiView™	DIGITUS® OptiVision™	DIGITUS® OptiArc™	DIGITUS® OptiMax™
Item number	DN-16028	DN-16027	DN-16036	DN-16037
Indoor/Outdoor	Indoor (Day & Night)	Indoor (Day & Night)	Indoor (Day & Night)	Outdoor (Day & Night)
QR Code Scan Registration	X	X	X	X
Client Web Browser Access	X	X	X	X
Multiple Browsers	X	X	X	X
Smartphone Access	X	X	X	X
Motion Detection	X	X	X	X
Video Resolution	1 megapixels (640 x 480)	2 megapixels (1.600 x 1.200)	2 megapixels (1.600 x 1.200)	2 megapixels (1.600 x 1.200)
Frame Rate	30	15/30	15/30	15/30
Video Format	MJPEG	H.264	H.264	H.264
Remote PTZ Control	—	—	X	—
Remote Configuration	X	X	X	X
2 Way Audio	X	—	X	X
Google Drive Backup	X	X	X	—

DIGITUS® OptiView



Your HD network camera – simple to install in less than one minute

- Interior surveillance, also in the dark
- Powerful mobile surveillance with support for iOS and Android devices
- Wireless LAN acc. to state-of-the-art 11n standard for streaming transfers
- Simple and quick installation with P2P support & QR code scanning
- Extended motion recognition – notification via email
- Integrated web server supports computer-less operations with direct link to Internet
- MJPEG image compression and 4x digital zoom
- LAN speed: 10/100Base TX Ethernet
- Supports Micro SD cards up to 32GB
- Works with most browsers
- Operating temperature: 0°C - 40°C
- Power supply: (±10%): DC5V/1.5A
- Dimensions: 135 x 60 x 64mm
- Provided mounting materials allow simple assembly



324881 / DN-16028 DIGITUS® OptiView

DIGITUS® OptiArc



Install your remote controlled motorized Pan & Tilt network camera simply and in less than a minute

- Remote controlled motorized pan and tilt function
- Wireless LAN acc. to state-of-the-art 11n standard for streaming transfer
- Video stream with little delay and network load through the H.264 compression format
- Simple and fast installation with P2P support & QR code scanning
- Supports Micro SD cards up to 32GB
- LAN speed: 10/100Base TX Ethernet
- Powerful mobile surveillance with support for iOS and Android devices
- Works with most browsers
- Removable antenna
- Powerful motion detection – automatic image taking and image securing via email/FTP server
- Supports up to 25fps (images per second) as HD720 and 15fps as UXGA
- Horizontally adjustable up to 270°
- Vertically adjustable up to 90°
- Operating temperature: 0°C - 40°C
- Power supply (±10%): DC5V/2A
- Dimensions: 100 x 99 x 118mm
- Provided mounting materials allow simple assembly



324362 / DN-16036 DIGITUS® OptiArc

DIGITUS® OptiVision



Your Day & Night network camera assures powerful and mobile surveillance during the day and at night

- Video stream with little delay and network load through the H.264 compression format
- Powerful mobile surveillance with support for iOS and Android devices
- Wireless LAN acc. to state-of-the-art 11n standard for streaming transfers
- Works with most browsers
- Simple and quick installation with P2P support & QR code scanning
- LAN speed: 10/100Base TX Ethernet
- Supports up to 25fps (images per second) as HD720 and 15fps as UXGA
- Supports Micro SD cards up to 32GB
- Powerful motion detection – automatic image taking and image securing via email/FTP server
- Operating temperature: 0°C - 40°C
- Power supply (±10%): DC5V/1.5A
- Dimensions: 48 x 85 x 110mm
- Provided mounting materials allow simple assembly



324355 / DN-16027 DIGITUS® OptiVision

DIGITUS® OptiMax

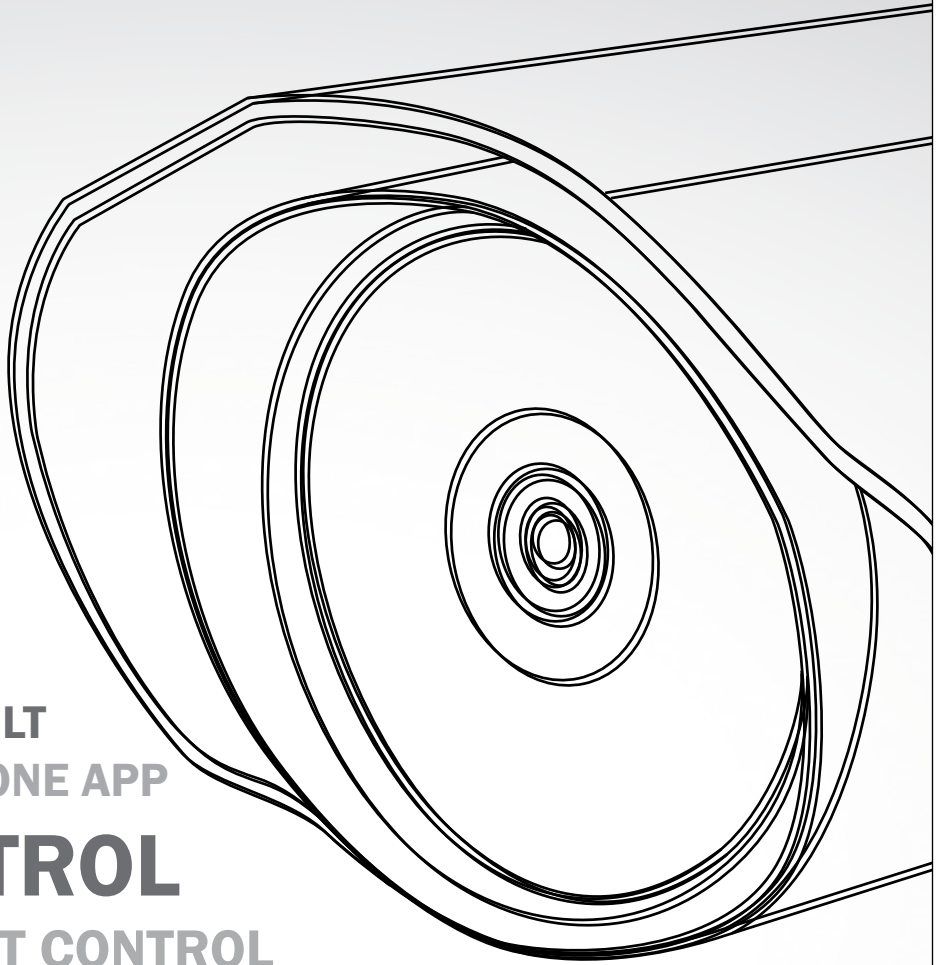


Your outdoor network camera provides powerful mobile surveillance with support for iOS and android devices

- Wireless LAN acc. to state-of-the-art 11n standard for streaming transfers
- Video stream with little delay and network load through the H.264 compression format
- Simple and fast installation with P2P support & QR code scanning
- Powerful mobile surveillance with support for iOS and Android devices
- LAN speed: 10/100Base TX Ethernet
- Works with most browsers
- Powerful motion detection – automatic image taking and image securing via email/FTP server
- Supports up to 25 fps (images per second) as HD720 and 15fps as UXGA
- Operating temperature: -10°C ~ +50°C
- Power supply (±10%): DC12V/1A
- Dimensions: 160 x 60 x 60mm
- Provided mounting materials allow simple assembly



324379 / DN-16037 DIGITUS® OptiMax



BULLET CAM

ENJOY SHIFT & TILT
SMARTPHONE APP

ZOOM CONTROL

SMART LIGHT CONTROL

DOME CAM ONVIF 2-WAY AUDIO

INDOOR CONNECTIONS AUTO TRACKING

NETWORK

OUTDOOR

DIGITUS®

DAY & NIGHT
WIRELESS

SMARTPHONE ACCESS

CAMERA

SECURITY

PAN & TILT
MOTION DETECTION

SYSTEM **LIVE.** CUBE CAM

DIGITUS® Internet Pan & Tilt Wireless HD Network Camera

Advanced vision network camera for perfect security in house and home

The “all-in-one” network and Internet camera, completely equipped, with motorized pan & tilt function. Ideal for all purposes of remote surveillance and security applications.

- Crystal clear HD video resolution (SXGA 1280 x 960, VGA 640 x 480, QVGA 320 x 240)
- Make video recordings and take single images via network and Internet
- Remote controlled motorized pan and tilt function
- Highly sensitive microphone for audio transfers
- Loudspeaker output for two-sided communication
- Powerful mobile surveillance with support for iOS and Android devices
- Fast video transfer for clear and sharp images
- Supports H.264, MPEG4 and MJPEG compression modes
- Wireless LAN acc. to state-of-the-art 11n standard for streaming transfers
- Comfortable integration into wireless networks by pressing a button via WPS (requires: WPS support through Access Point)
- Meets highest security requirements through WPA2 encryption
- 2 exchangeable antennas with PR-SMA connection
- Supports SD cards with up to 8GB storage
- Powerful motion detection – automatic image taking and image securing via email/FTP server
- Integrated web server supports computer-less operations with direct link to Internet
- High quality 1.3 Megapixel CMOS Sensor
- 5mm lens with F2.8
- Supports up to 30 fps (frames per second) with QVGA and VGA, 10-15 fps with HD resolution
- LAN speed: 10/100Base TX Ethernet
- Provided mounting materials allow simple assembly
- Works with most browsers
- Horizontal turning up to 355°
- Vertical panning up to 120°
- Operating temperature: 0°C - 40°C
- Power supply (±10%): DC12V / 1A
- Dimensions (mm): 108 x 112 x 108
- Supports DIGITUS® IPcam Viewer App
- Extensive Windows Software contained in scope of delivery



311119 / DN-16035 Internet Pan & Tilt Wireless HD IP Camera

DIGITUS® Internet Wireless 11n HD Network Camera

Wireless security for the home – without laborious network wires

The “all-in-one” network and internet camera fully equipped. Ideal for all purposes of remote surveillance and security applications.

- Crystal clear HD video resolution (SXGA 1.280 x 960, VGA 640 x 480, QVGA 320 x 240)
- Powerful mobile surveillance with support for iOS and Android devices
- Wireless LAN acc. to state-of-the-art 11n standard for streaming transfers
- Comfortable integration into wireless networks by pressing a button via WPS (requires: WPS support through Access Point)
- Meets highest security requirements through WPA2 encryption
- Powerful motion detection – automatic image taking and image securing via email/FTP server
- Integrated web server supports computer-less operations with direct link to Internet
- High quality Megapixel CMOS Sensor
- Fast video transfer for clear and sharp images
- MJPEG image compression and 4x digital zoom
- Supports up to 30 fps (frames per second) with QVGA and VGA, 10-15 fps with HD resolution
- LAN speed: 10/100Base TX Ethernet
- Provided mounting materials allow simple assembly
- Works with most browsers
- Extensive Windows software contained in scope of delivery
- Operating temperature: 0°C - 40°C
- Power supply (±10%): DC5V/1.0A
- Dimensions (mm): 27 x 65 x 80
- Supports DIGITUS® IPcam Viewer App



310785 / DN-16026 Internet Wireless 11n HD IP Camera

Powerline Switch

DIGITUS® High-Speed Powerline Ethernet-Adapter, 500 Mbps



The simply to be installed plug and play adapter expands Powerline networks with a transfer rate of up to 500 Mbps

Adapter with network connection (RJ-45) for shared Internet access via DSL modem via existing in-house power supply.

- Data transfer rate of up to 500Mbps via in-house power supply
- Gigabit Ethernet network connection
- Ranges from up to 300 meters through rooms and across storeys
- Bug-proof through integrated encryption
- Particularly compact design – not bigger than a power supply unit
- Meets the standard HomePlug AV
- Works also for game consoles with network connection or IPTV set top boxes.



302223 / DN-15024 High-Speed Powerline Ethernet Adapter, 500 Mbps

302230 / DN-15025 High-Speed Powerline Starter-Kit, 500 Mbps

DIGITUS® High-Speed Powerline Ethernet-Adapter, 200 Mbps



The simple to install Plug and Play Adapter expands Powerline Networks and offers network access at every power outlet

Adapter with network connection (RJ-45) for shared Internet access via DSL modem via existing in-house power supply

- Data transfer rate up to 200Mbps via in-house power supply system
- Ranges from up to 300 meters through rooms and across storeys
- Bug-proof through integrated encryption
- Particularly compact design – not bigger than a power supply unit
- Meets the standard HomePlug AV
- Also suitable for game consoles with network connection
- Safety key for software-free configuration
- “Power Pack Utility” offers the possibility to untrained users to manage their HomePlug network (optional)



309802 / DN-15026 High-Speed Powerline Ethernet Adapter, 200 Mbps

309819 / DN-15027 High-Speed Powerline Starter Kit, 200 Mbps

DIGITUS® 500M Powerline Switch



Powerline Switch with integrated 4-Port Gigabit network switch

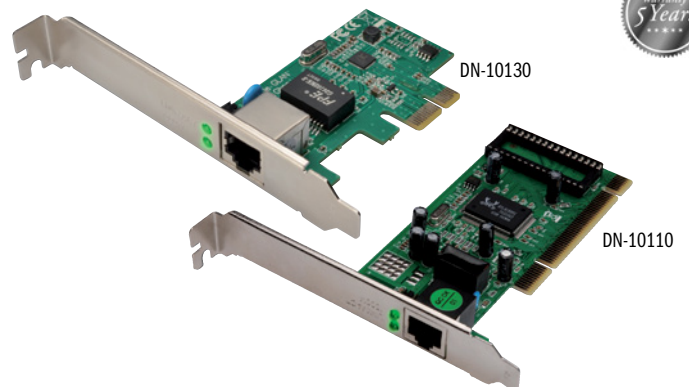
High Speed 500Mbps Powerline adapter with integrated 4 Port Gigabit switch. With the 2 in 1 solution use the advantages of data transfer via the power supply system with up to 4 wired network devices. All you need is a Powerline adapter to connect several devices to your Powerline network. If, e. g., you want to integrate your network-compatible TV to the network via Powerline, then you connect with the adapter simultaneously your game console, DVD player and media player. You only need one power outlet and you don't need another switch.

- Data transfer rate of up to 500Mbps via in-house power supply
- Powerline switch with integrated 4-Port Gigabit network switch
- Adapter with network connection (RJ-45) for shared Internet access via DSL modem via existing in-house power supply.
- Ranges from up to 300 meters through rooms and across storeys
- Bug-proof through integrated encryption
- Meets Standard HomePlug AV
- Can co-exist with HomePlug 1.0 (14/85Mbps)



315360 / DN-15028 500M Powerline Switch

DIGITUS® Gigabit Ethernet PCI-Network Card



Offers unprecedented speed via existing network cables – suitable for the fastest network applications

- Supports 10/100/1.000 Mbps networks with automatic recognition and settings
- IEEE 802.3, IEEE 802.3u and IEEE 802.3ab compatible
- IEEE 802.3x full-duplex streaming control
- Offers auto negotiation and crossover recognition
- Realtek chipset
- PCI Local Bus Master Rev.2.1 and 2.2 compatible
- Suitable for all common network environments
- Additional low profile sheet metal to use the card also in computers with little space
- Works in Windows 7/Vista/XP/Mac OS X/Linux environments



310778 / DN-10110 Gigabit Ethernet PCI Network Card

310778 / DN-10130 Gigabit Ethernet PCI Express Network Card

DIGITUS® Fast Ethernet Print Server, USB 2.0



Turns a workplace printer simply into a network printer for shared use

- Compatible with IEEE 802.3, IEEE 802.3u Ethernet Standards
- Offers a USB 2.0 port to connect printer
- Supports TCP/IP, IPX/SPX, NetBEUI and AppleTalk network protocols
- Supports LPR, IPP, SMB/TCP, Raw Printing and Unix Logical print protocols
- Supports Peer-to-Peer printing (TCP/IP/IPX/NetBEUI/AppleTalk)
- Supports server based printing (Novell NetWare and Windows)
- Compatible with all common operating systems: Windows Systems/NetWare 3.x and new/Unix/Linux
- Supports DHCP server and client protocols
- Supports web based management, the Windows Configuration Utility and the SNMP protocol
- Offers simple installation and provided setup and diagnosis programmes
- Inclusive power supply



315308 / DN-13003-1 Fast Ethernet Print Server, USB 2.0

DIGITUS® Wireless LAN Print Server, USB 2.0



Offers wireless operations for your printer

Without a problem you may connect your printer with your PC via "Wireless LAN Printserver". This product does not only support the commonly known network and print protocols but also "Peer-to-Peer" and server based printing. It is compatible with all common operating systems - Windows, Mac or Linux. It also supports a web based management: the Windows configuration utility and the SNMP protocol. And due to its simple installation - immediate use should be no problem!

- Connects a printer - wireless or via cable - via USB port with all PCs connected to the network
- Corresponds with the standards Ethernet IEEE 802.3, IEEE 802.3u and IEEE 802.11b/g/n for W-LAN standards
- Various security features such as WPA2/WPA/WEK encryption
- Supports 10/100Mbps in the Ethernet network and up to 150 Mbps in the Wireless LAN
- 1x USB 2.0 Type A socket to connect a printer, 1 x RJ45 socket to connect to the network
- Supports TCP/IP, IPX/SPX, NetBEUI and AppleTalk Network protocols and also LPR, IPP, SMB/TCP, Raw Printing and Unix Logical Print Protocols
- Compatible with Windows XP/Vista/7, NetWare (3.x and higher), MAC OS and Unix/Linux
- Supports DHCP server and client protocols
- Web based user interface for simple configuration
- Simple to use Windows installation and setup programme
- Supports (optionally error-tolerant) firmware upgrades



315353 / DN-13014-3 Wireless LAN Print Server with USB 2.0 interface

DIGITUS® 2+1 Port Print Server



Several PCs may print at the same time via our printer server

The DIGITUS® 2+1 Port Print Server converts your work place printer into a network printer for shared use. The bi-directional parallel interface (IEEE 1284) for Port 1 (PID1) and the two USB 2.0 High Speed Ports for Port 2, 3 (PID2, 3) provide you with a fast Ethernet network. The product works with all operating systems.

- 1x bi-directional parallel interface (IEEE 1284) for Port 1 (PID1)
- 2x USB 2.0 High Speed Ports for Port 2, 3 (PID2, 3)
- Fast Ethernet Network Port: RJ-45 for 10Base-T or 100Base-TX
- Supports Windows 7/Vista/XP/Mac OS/ Linux (OS Ubuntu)



315346 / DN-13006-1 Fast Ethernet Print Server, 2-Port USB, 1-Port parallel

DIGITUS® 3-Port Fast Ethernet Print Server



Enables network access of several PCs to one printer

- Compatible with IEEE 802.3, IEEE 802.3u Ethernet standards
- Offers 2x USB 2.0 ports and 1x parallel port to connect printers
- Supports TCP/IP, IPX/SPX, NetBEUI, Rendezvous, AppleTalk and IPv6 network protocols
- Supports LPR, IPP, SMB/TCP, Raw Printing and Unix Logical Print protocols
- Supports Peer-to-Peer printing (TCP/IP/IPX/NetBEUI/AppleTalk)
- Supports server based printing (Novell NetWare and Windows)
- Compatible with all common operating systems: Windows 98/ME/NT/2000/XP/Vista/NetWare 3.x and new/Unix/Linux
- Supports DHCP Server and Client protocols
- Supports web based management and Windows Configuration Utility
- Offers simple installation and provided setup and diagnosis programmes
- Delivery including power supply unit



221883 / DN-13006-W Fast Ethernet Print Server, 2-Port USB, 1-Port parallel

NAS Server

DIGITUS® 1-Port USB 2.0 Multifunction Network Server



The "All-in-One" solution: Integrated Print server, NAS and network USB hub

Print server - ideal for multifunction printers

- NAS - Connect your storage media and turn your server into a network storage. Access your data via the network or the Internet. Wherever you want it!
- Network USB hub - Connect USB devices via the network! No disturbing cable any longer for mobile users!
- Supports all kinds of printers, scanners, DVD drives, storage media, cameras, webcams, digital TV tuners, iPods, iPads, iPhones and many more ...
- Offers FTP, SMB and CIFS server
- Provides 1x USB 2.0 Port, expandable through USB hubs
- LAN: 10/100Mbps
- Simple installation via web browser
- Suitable for Windows 7/Vista/XP/Mac OS X environment



292913 / DN-13020 1-Port USB 2.0 Multifunction Network Server

292920 / DN-13021 1-Port USB 2.0 Wireless Multifunction Network Server

292937 / DN-13022 4-Port USB 2.0 Multifunction Network Server

292944 / DN-13023 4-Port USB 2.0 Wireless Multifunction Network Server

DIGITUS® Mini NAS Server for external USB hard disks



The compact and energy efficient NAS server for the shared file access via the network!

The Mini NAS server brings USB 2.0 hard disks to the network

- NAS function (Network Attached Storage) to release the hard disk to the local network or Internet
- Allows simple storage, exchange and data securing in the entire network
- Network RJ45 connection for fast Ethernet 10/100 Mbps
- Samba and FTP server for simple file access
- BitTorrent server for automatic downloads even with turned-off computer
- Simple access to photos, movies or music via iTunes, Xbox 360 and Playstation 3
- Energy consumption 2.5 Watt
- Supports Windows 7/Vista/XP/Mac OS X/Linux environment



272977 / DN-7023-1 NAS Server for external USB hard disks

DIGITUS® NAS, 2-times SATA Hard Disk Casing



Offers simple access and data exchange via the network – works also as backup solution, media server or for file sharing

This powerful Network Attached Storage System allows comfortable access to your data. With the gigabit integration nothing will be in the way of lightning fast exchange of information. Make all your multimedia contents available in the network. Data copying to the NAS couldn't be simpler: Via pressing a button you copy the data to the NAS system via direct USB connection. Backing up your personal and business data this becomes child's play.

- Two hard disk frames for simply adapting to your requirements
- Integrated FTP and Samba server
- Gigabit network integration
- Supports CIFS, FAT32, EXT2 and EXT3 file systems
- Offers USB mass storage access for the entire network
- Integrated FTP/HTTP Download Manager
- Supports P2P BitTorrent Downloads
- Integrated Media Server and iTunes Server
- Supports copy function from USB devices via pressing a button
- Simple configuration via the Web



243250 / DN-7024 NAS for 2 SATA HDDs, 2 USB storage devices

DIGITUS® Gigabit NAS Server for external USB hard disks



Allows simple storage, exchange and data securing in the entire network

The gigabit NAS server brings USB 2.0 hard disks to the network

- NAS function (Network Attached Storage) to release hard disk to the local network or Internet
- 2x USB Ports for up to 2 external hard disks
- Network RJ45 connection for fast gigabit Ethernet 10/100/1000 Mbps
- Simple data securing between the connected HDDs via button on device
- Samba and FTP server for simple file access
- BitTorrent server for automatic downloads even with turned-off computer
- Simple access to photos, movies or music via iTunes, Xbox 360 and Playstation 3
- Supports FAT 32 file system with up to 127 GB volume size
- Supports Windows 7/Vista/XP/Mac OS X/Linux environment



308362 / DN-70230 Gigabit NAS Server for external USB hard disks

DIGITUS® BlackRapid 100 Switch



Expands the home network and offers connections for 5 network devices

Casing in DIGITUS® design

- IEEE 802.3 and IEEE 802.3u compatible
- 20/200Mbit in full duplex
- Automatic speed and half/full duplex recognition/configuration
- Store-and-forward technology
- Auto MDI/MDI-X Function
- Silent design - without fan
- External power supply unit



251729 / DN-50011 5-Port Fast Ethernet BlackRapid 100 Switch

251736 / DN-50021 8-Port Fast Ethernet BlackRapid 100 Switch

DIGITUS® Fast Ethernet N-Way 5-Port Desktop Switch



Store-and-forward technology for optimized data transfer

8-Port 10/100/1000 Mbps Fast Ethernet Switch

- Meets network standards IEEE 802.3 and IEEE 802.3u
- Automatic speed recognition for 10/100Mbps
- Auto MDI/MDI-X for automatic cable recognition
- Silent design - without fan



272786 / DN-50012 Fast Ethernet N-Way 5-Port Desktop Switch

272793 / DN-50022 Fast Ethernet N-Way 8-Port Desktop Switch

DIGITUS® BlackRapid 1000 Switch



Utilize the gigabit speed and bandwidth in existing network

Casing in DIGITUS® design

- IEEE802.3 Ethernet, IEEE802.3u Fast Ethernet, IEEE802.3ab Gigabit Ethernet compatible
- Automatic speed and half/full duplex recognition/setting
- 20/200/2000 Mbit in full duplex mode
- Auto MDI/MDI-X function
- Silent design - without fan
- External power supply unit



251750 / DN-80071 5-Port Gigabit Ethernet BlackRapid 1000 Switch

251743 / DN-80061 8-Port Gigabit Ethernet BlackRapid 1000 Switch

DIGITUS® Gigabit Switch N-Way 5-Port



Ideal for fast and simple network expansion!

5-Port 10/100/1000Mbps Gigabit Ethernet Switch

- Meets network standards IEEE 802.3, IEEE 802.3u and IEEE 802.3ab
- Automatic speed recognition for 10/100/1000Mbps
- Auto MDI/MDI-X for automatic cable recognition
- Store-and-forward technology for optimized data transfer
- Silent design - without fan
- External power supply unit



293453 / DN-80072 Gigabit Switch N-Way 5-Port

293446 / DN-80062 Gigabit Switch N-Way 8-Port

USB Video Adapter

DIGITUS® USB 3.0 Graphics Adapter

One computer – up to 6 monitors – no extra graphic cards

- Expand your working place (Dual Display): connect additionally a monitor, TV or projector via the USB interface.
- Supports USB 3.0 specifications
- Supports several playback modes: Main/expanded display, mirroring
- User friendly applications: Screen rotation, multi-screen management, screen recognition (EDID)
- Up to 6 graphic adapters simultaneously usable for PC
- Adding or removing monitor without restart of the system
- Supports high resolution up to 2.048 x 1.152
- Supports 2.1 Audio channel
- Video streaming is supported up to 1.080p
- Power supply via USB port
- Automatic continuance from sleep mode to standby mode
- Supports Windows 7/Vista/XP environment

• **Optional cable(s):**

USB 2.0: DK-300124-010-D (1m), DK-300124-018-D (1,8m), DK-300124-030-D (3m)

HDMI: AK-330102-020-S (2m), AK-330102-030-S (3m), AK-330102-050-S (5m)

DVI: AK-320300-020-S (2m), AK-320300-050-S (3m), AK-320300-050-S (5m)

VGA: DK-310105-018-D (1,8m), DK-310105-030-D (3m), DK-310105-050-D (5m)



USB 3.0 to VGA Adapter DA-70450



USB 3.0 to DVI Adapter DA-70451



USB 3.0 to HDMI Adapter DA-70452



Back view DA-70450 | DA-70451 | DA-70452



311058 / DA-70450 USB 3.0 to VGA Adapter

311065 / DA-70451 USB 3.0 to DVI Adapter

311089 / DA-70452 USB 3.0 to HDMI Adapter

DIGITUS® Graphics Adapter

Connect 2 or more monitors/projectors to your computer

- Expand your working place (Dual Display): connect additionally a monitor, TV or projector via the USB interface.
- Supports USB 2.0 specifications
- User friendly applications: Screen rotation, multi-screen management, screen recognition (EDID)
- Supports several playback mod: Main/expanded display, mirroring
- Up to 6 graphics adapters simultaneously usable for PC, 4 for Mac
- Resolution up to 1.920 x 1.080 Full HD
- Video storage: 8MB SDRAM
- Video streaming is supported up to 1.080p
- Color depth up to 32 Bit
- Power supply via USB Port
- Supports DirectX 3D graphic accelerator
- Compatible with newest ATI & nVidia graphic cards
- Supports Windows 7/Vista/XP, Mac OS/Linux (OS Ubuntu) environment

• **Optional cable(s):**

USB 2.0: DK-300124-010-D (1m), DK-300124-018-D (1,8m), DK-300124-030-D (3m)

HDMI: AK-330102-020-S (2m), AK-330102-030-S (3m), AK-330102-050-S (5m)

DVI: AK-320300-020-S (2m), AK-320300-050-S (3m), AK-320300-050-S (5m)

VGA: DK-310105-018-D (1,8m), DK-310105-030-D (3m), DK-310105-050-D (5m)



Back view DA-70833



Back view DA-70834



Back view DA-70851



299837 / DA-70833 Graphic Adapter, USB 2.0 to VGA

299899 / DA-70834 Graphic Adapter, USB 2.0 to DVI

299974 / DA-70851 Graphic Adapter, USB 2.0 to HDMI

DIGITUS® Premium SATA hard disk exchange frame



Turn each 3.5 hard disk into an easy exchangeable mobile hard disk – ideal for backups

High quality hard disk exchange frame for SATA hard disks 3.5

- Full ALU casing with plastic panel – better EMI-/RFI protection
- Integrated fan at lower side
- Drawer can be locked
- With Status LED



236412 / DA-50217 Premium SATA hard disk exchange frame aluminium

DIGITUS® IDE hard disk exchange frame



Turn each 3.5 hard disk into an easy exchangeable mobile hard disk – ideal for backups

High quality hard disk exchange frame for IDE hard disks 3.5

- Plastic frame
- Incl. fan in frame (an additional fan can be retrofitted for the drawer)
- Drawer can be locked
- With Status LED



236429 / DA-50218 IDE hard disk exchange frame, black

DIGITUS® SATA hard disk exchange frame



Turn each 3.5 hard disk into an easy exchangeable mobile hard disk – ideal for backups

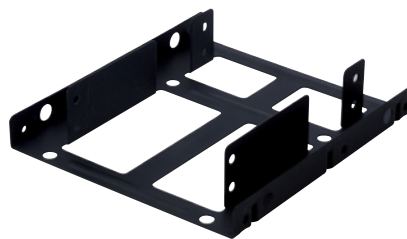
Hard disk exchange frame for installation in CD/DVD drive tray

- Suitable for SATA hard disks 3.5
- Material: Plastic
- 1 additional fan integrated
- Drawer can be locked
- With Status LED



236399 / DA-50215 SATA hard disk exchange frame

DIGITUS® Two-times 2.5 hard disk installation frame



For installation of two HDDs in a 3.5 tray

Suitable for installing of up to 2 HDDs or SSDs in a 3.5 tray

- Usable with HDDs or SSDs
- Also suitable for small Media Center PCs
- Easy installation
- Size: 11.5cm x 10.1cm x 2.3cm
- Metal design for better heat dissipation of the HDDs
- Incl. bracket and screws



291893 / DA-70431 assembly kit: Dual HDD 2.5 => 3.5 BAY

DIGITUS® IDE/SATA hard disk exchange frame



Expand your storage without problems with the hard disk exchange frame for the CD/DVD drive tray

Hard disk exchange frame for installation in CD/DVD drive tray

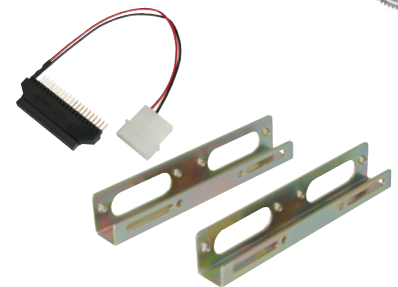
- Suitable for SATA hard disks 3.5/IDE hard disks
- Material: Plastic
- 1 additional fan integrated
- Drawer can be locked
- With Status LED



194163 / DA-50214-A SATA hard disk exchange frame, grey

194149 / DA-50211-A IDE hard disk exchange frame, grey

Hard disk installation kit incl. 2.5 => 3.5 adapter



For assembly of 2.5 hard disks in desktop/tower casings

For installing hard disks 2.5 in drive trays 3.5

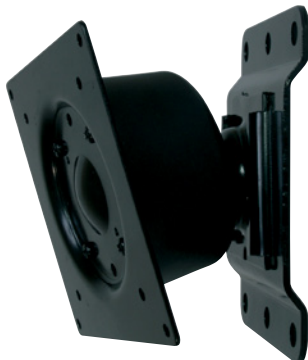
- Two metal installation angles, mounting screws contained in scope of delivery
- Adapter for 40 pole IDE cable and power supply adapter contained in scope of delivery
- Hard disk installation kit 2.5=>3.5



170372 / DA-70430 hard disk installation kit 2.5 => 3.5

Monitor Holders

DIGITUS® Wall mounting for monitors & flat screens



Comfortable viewing enjoyment for the perfect multimedia adventure

- Supports VESA standard
- Dimensions (75x75mm and 100x100mm)
- Own weight: 0.8kg
- Total length 80mm
- Maximum resilience 15kg
- Monitor rotatable by 180°
- Including screw set



239376 / DA-90307 Wall mounting for monitors & flat screens

DIGITUS® Wall mounting for monitors & flat screens



Experience the best multimedia enjoyment due to wall mounting for monitors and flat screens

- Small hook mounting for wall mounting
- Supports VESA standard
- Dimensions (75 x 75mm and 100 x 100mm)
- Own weight: 0.5kg
- Dimensions: 114 x 114 x 21.5mm
- Maximum resilience: 30kg
- Including screw set



239369 / DA-90303 Wall mounting for monitors & flat screens

DIGITUS® Wall mounting for monitors & flat screens



Enjoy your comfortable viewing with your monitor & flat screen

- Swivel wall mounting for up to 82cm (32") LCD/TFT TV
- Simple mounting but also mounting of the TV set
- Supports VESA standard - dimensions (75 x 75mm, 200 x 100mm, 100 x 100mm und 200 x 200mm)
- Maximum resilience: 32kg
- Right and left up to 20°, 180° rotatable
- Tilt angle adjustable up to 20°
- Including screw set



239406 / DA-90312 Wall mounting for monitors & flat screens 32kg

DIGITUS® Wall mounting for flat screens



Comfortable viewing enjoyment for your flat screen

- Universally adjustable wall mounting for up to 165cm (65") LCD/Plasma TV
- Simple mounting but also mounting of the TV set
- Weight: 4.9kg
- 760 x 800 x 520mm
- Maximum resilience: 80kg
- Tilt angle adjustable up to 26°
- Including screw set



239413 / DA-90313 Wall mounting for flat screens up to 165 cm (65")

DIGITUS® Wall mounting for flat screens



Comfortable viewing enjoyment for the perfect multimedia adventure

- Small wall mounting for LCD/TFT TV sets up to 110cm (42")
- Supports VESA standard
- Dimensions (100 x 200mm and 200 x 200mm)
- Own weight: 1.7kg
- Dimensions: 230 x 230 x 25.3mm
- Maximum resilience: 70kg
- Distance to wall: 25mm
- Including screw set



239383 / DA-90310 Wall mounting for LCD/TFT TV up to 70kg

DIGITUS® Desktop Monitor holder for two flat screens with table mounting



Extend your productivity!

Increase your daily productivity and simplify multitasking with a significantly extended visual working area. Bring time-consuming back and forth switching between applications, adjustments of several windows and continuous clicking and scrolling to an end. Expand your viewing field during your work and entertainment and discover a new kind of computing with panoramic view. Tilt, swivel, rotate or adjust the height; all of that comes easy with the holder! The holder can easily be fastened at the end of the desk through a space saving clamping bracket. Use the cable management to avoid cumbersome cable tangles. You'll experience a new panoramic view.

- Material: Steel/aluminium alloy
- Supports flat screen size: 24" - 32"
- Tilt angle for every holder: +/- 15°
- Swivel for every hinge: +/- 20°
- Rotatable for every hinge: 90°
- Table mounting for simple installation
- Screw type: M4, M6
- Supported max. weight for every holder: 15kg (33 lbs)
- Dimensions: 924 x 144 x 470mm (26.46 x 5.67 x 14.57")
- Weight: 5.7kg (12.57 lbs)
- Incl. cable management



314219 / DA-90321 Dual LCD Desktop monitor holder with table mounting

DIGITUS® Swivel arm for table assembly for monitors



Viewing comfort and ergonomic for your work place

- Easy to install with special table bracket
- Movable into all directions
- Supports VESA standard
- Dimensions (75 x 75mm and 100 x 100mm)
- Own weight: 2.0kg
- Total length: 520mm
- Maximum height: 315mm
- Max. resilience: 10kg
- Maximum strength of table top: 75mm
- LCD Monitor rotatable by 180°
- Very space saving solution
- Including screw set



259671 / DA-90306-1 For table assembly, black

DIGITUS® Swivel wall mounting for flat screens



Enjoy your entertainment all around due to 360° flexibility

- Easy, very resilient wall mounting for up to 110cm (42") LCD/TFT TV
- Simple to mount and 360° flexible
- Supports VESA standard
- Dimensions (75 x 75mm and 100 x 100mm)
- Weight: 2kg, 185 x 450 x 85mm
- Maximum resilience: 50kg
- Right and left rotatable up to 20°
- Tilt angle adjustable up to 20°
- LCD Monitor rotatable by 360°
- Including screw set



239390 / DA-90311 Wall mounting for LCD/TFT TV up to 50kg

Monitor Holders

DIGITUS® Triple Desktop Monitor Holder



Viewing area increased three-fold in width

- Material: Steel/aluminium alloy
- Supports VESA standard - dimensions (75 x 75mm and 100 x 100mm)
- Supports flat screen size: 15" - 24"
- Supported max. weight for every hinge: 8kg (17.64 lbs)
- Swivel for every hinge: +/- 20°
- Tilt angle for every hinge: +/- 20°
- Rotatable for every hinge: 90°
- Dimensions: 1280 x 307 x 370mm (50.39 x 12.09 x 14.57")
- Weight: 5.3 kg (11.63 lbs)
- Incl. cable management
- Screw type: M4



314127 / DA-90315 Triple Monitor Holder up to 24"

DIGITUS® Height adjustable desktop monitor holder



Maximum flexibility of your (desktop) monitor due to 360° swivel range

- Material: Steel/plastic/aluminium
- Supports VESA standard
- Dimensions (75 x 75mm and 100 x 100mm)
- Supports flat screen size: 15" - 24"
- Supported max. weight up to 8kg
- Swivel range up to 360°
- Tilt angle: -5° (downwards), 20° (upwards)
- Height adjustment range: 130mm
- Dimensions: 253 x 435 x 253mm (9.9 x 8.7 x 9.9")
- Incl. cable management
- Screw type: M4
- Color black



314141 / DA-90316 Height Adjustable Desktop Monitor Holder

DIGITUS® Dual Desktop Monitor Holder



Extend your productivity!

- Supports flat screen size: 24" - 32"
- Material: Steel/aluminium alloy
- Supported max. weight for every hinge: 15kg (33 lbs)
- Swivel for every hinge: +/- 20°
- Tilt angle for every hinge: +/- 15°
- Dimensions: 924 x 307 x 470mm (36.38 x 12.09 x 18.50")
- Weight: 4.84 kg (10.67 lbs)
- Incl. cable management
- Screw type: M4, M6



314233 / DA-90322 Dual Desktop Monitor Holder up to 32"

DIGITUS® Single desktop monitor holder with table holder



Our monitor holder with table mounting guarantees tidiness on your desk

- Material: Steel/aluminium alloy
- Supports VESA standard
- Dimensions (75 x 75mm and 100 x 100mm)
- Table mounting for simple installation
- Supports flat screen size: 15" - 24"
- Tilt angle: +/- 20°
- Weight: 2.12kg (4.66 lbs)
- Swivel range: +/- 20°
- Supported max. weight up to 12kg
- Dimensions: 158 x 144 x 470mm (6.22 x 5.67 x 18.50")
- Screw type: M4
- Incl. cable management



314165 / DA-90318 Single Monitor Holder up to 24"

DIGITUS® Single Desktop Monitor Holder



Perfect solution if you want both: Height and position flexibility

- Material: Steel/aluminium alloy
- Supports VESA standard
- Dimensions (75 x 75mm and 100 x 100mm)
- Supports flat screen size: 15" - 24"
- Supported max. weight for every hinge: 12kg (17.64 lbs)
- Swivel for every hinge: +/- 20°
- Tilt angle for every hinge: +/- 20°
- Rotatable for every hinge: 90°
- Dimensions: 422.5 x 240.2 x 370mm (16.63 x 9.46 x 14.57")
- Weight: 1.9 kg (4.2 lbs)
- Incl. cable management
- Screw type: M4



314158 / DA-90317 Single Monitor Holder up to 24"

DIGITUS® Projector wall mountings



Create space on your conference table!

- Material: Steel/aluminium alloy
- Weight: 3.1kg (6.83 lbs)/3.3kg (7.3lbs)
- Supported max. weight up to 12kg (26.46 lbs)/15kg (33.07 lbs)
- Dimensions: 110mm x 215mm x 1052.5mm
- Max. distance to wall: 955mm
- Projector tilt angle: +/- 10°
- Holder tilt angle: Up to +/- 5°
- Rotatable: 360°
- Horizontal angle: +/- 10°
- Screw type: M3, M4, M5, M6



314240 / DA-90323 Projector Wall Mounting, supports up to 12kg

314257 / DA-90324 Projector Wall Mounting, supports up to 15kg

USB Card Reader



DIGITUS® Card Reader All-in-one, USB 3.0

The fastest and easiest way to transfer photos from your digital camera to the computer

- Compatible with USB 3.0 specifications, backward compatible with USB 2.0 and USB 1.1
- Supported data transfer: Super-Speed (5 Gbps)/High-Speed (480 Mbps)/ Full-Speed (12 Mbps)/Low-Speed (1.5 Mbps)
- Supports media copy and hot swap
- Supports hot-plugging and is plug and play ready
- The following card formats are supported: Compact Flash (CF) series, Memory Stick (MS) + M2 series + MSXC + MSPRO-HC, Secure Digital (SD/SDHC) + mini SD + Micro SD (Trans-Flash), MMC, SDXC
- Power supply via USB
- Supports Windows 2000/XP/Vista/7, Mac OS 10.X



300557 / DA-70330 Card-Reader, USB 3.0, All-in-one

DIGITUS® USB 2.0 All-in-one Card Reader

Transfer your digital contents very fast and easy!

- USB 2.0 compliant
- USB Mini B socket
- Supports the following storage card types: CF, SD/SDHC/SDXC/MMC/MMC4.0/RS-MMC/MMC PLUS/MMC Mobile/MMC Micro/miniSD, MS/MS Pro/MS Pro Duo, XD, Micro SD (T-Flash), M2
- Supports USB High speed 480Mbps and Full speed 12Mbps
- Supports media copy and hot swap
- Supports hot plugging and is plug and play ready
- Dimensions: 5.4cm x 2.8cm x 1.2cm
- Color: white, silver & black, silver



317050 / DA-70323 Card Reader, USB 2.0, All-in-one, white

306528 / DA-70322 Card Reader, USB 2.0, All-in-one, black

USB Hubs

DIGITUS® USB 3.0 Hub, 4-Port

Extended connections for super speed USB 3.0 devices

- Supports super speed USB (5Gbps) and high speed USB (480Mbps)
- Compatible with USB 3.0 specifications, backward compatible with USB 2.0 and USB 1.1
- 4x USB A/F, 1x USB M/F, cable AM-AM 1.2M
- Surge protection at all outputs
- Plug and Play ready
- Suitable for Windows 2000/XP/Vista/7/Mac OS 10.X environment



317005 / DA-70231 USB 3.0 Hub, 4-Port black

317036 / DA-70232 USB 3.0 Hub, 4-Port white

DIGITUS® USB 2.0 Hub, 7-Port

Expand your connectivity!

- Dimensions: 8.5cm x 4.4cm x 1.4cm
- 7x USB 2.0 ports
- USB 2.0 compliant
- USB Mini B socket
- Supports USB high speed 480Mbps and full speed 12Mbps
- Supports media copy and hot swap
- Supports hot plugging and is plug and play ready
- Color: white, silver & black, silver



318859 / DA-70222 USB 2.0 Hub, 7-Port black

318866 / DA-70223 USB 2.0 Hub, 7-Port white

DIGITUS® USB 2.0 Hub, 4-Port

Expand your connectivity!

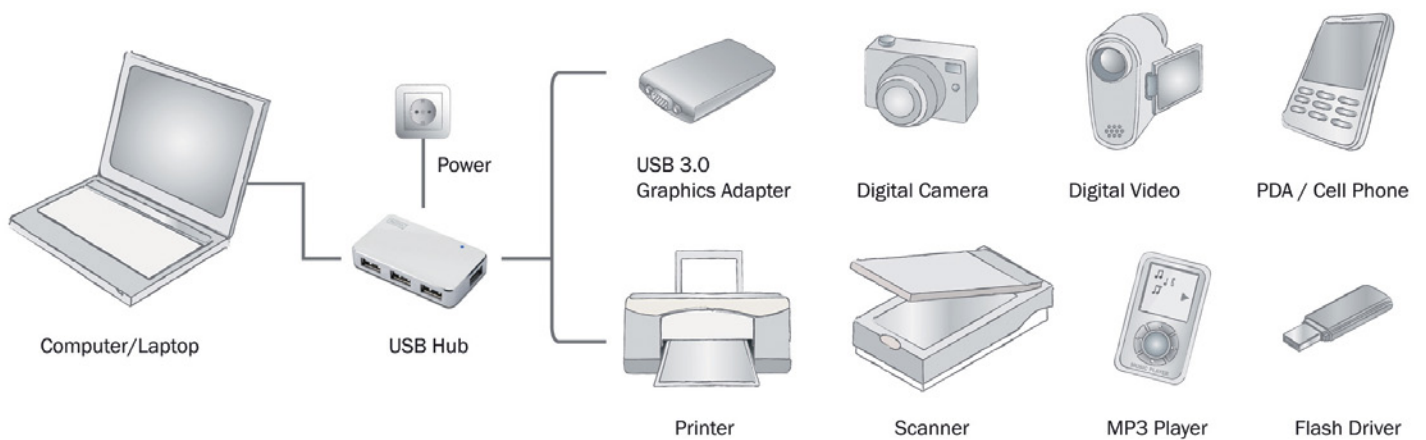
- USB 2.0 compliant
- 4x USB 2.0 ports
- USB Mini B socket
- Supports USB high speed 480Mbps and full speed 12Mbps
- Supports media copy and hot swap
- Supports hot-plugging and is plug and play ready
- Dimensions: 5.4cm x 2.8cm x 1.2cm
- Color: white, silver



306535 / DA-70220 USB 2.0 Hub, 4-Port black

317043 / DA-70221 USB 2.0 Hub, 4-Port white

USB Hub application example



USB Repeater

DIGITUS® USB 2.0 Repeater cable

The solution to use your USB devices far away from your PC!

- Supports all common USB end devices such as scanners, printers, cameras etc.
- Compatible with USB specifications Revision 2.0 and 1.1
- USB A plug -> USB A socket
- USB connection supports Plug and Play
- Plastic casing in aluminium design
- Also usable for USB 2.0 devices with own power supply
- Up to 25m
- Suitable for Windows 7/Vista/XP/Mac OS X environment



325529 / DA-70130-4 USB 2.0 Repeater cable 5m

326212 / DA-73100-1 USB 2.0 Repeater cable 10m

306450 / DA-73101 USB 2.0 Repeater cable 15m

306467 / DA-73102 USB 2.0 Repeater cable 20m

306474 / DA-73103 USB 2.0 Repeater cable 25m

DIGITUS® USB Extender

Master – at low costs – the USB cable length limit and place your USB devices where you want them

- Supports all common USB end devices such as scanners, printers, cameras etc.
- Maximum cable length between send and receiving unit 60m
- Connection with standard Cat5e UTP patch cable
- Scope of delivery contains send and receiving unit
- Suitable for all USB supporting operating systems



233626 / DA-70139-1 USB Extender

USB Sharing Switch



DIGITUS® USB 3.0 Sharing Switch

The USB Sharing Switch allows you to make a USB device usable for 2 PCs via USB 3.0 Super Speed



- High-Speed data transfer, low power consumption
- Compatible with USB 3.0 specifications, backward compatible with USB 2.0 and USB 1.1
- 2 PCs -> 1 end device
- Select PCs via simple pressing a button at the upper side of the device
- Computer connection with USB 3.0 type connection to USB devices with USB 3.0 type connections
- USB bus powered, w/o power supply
- 2 blue LEDs show the selected PC
- Supports Windows 2000/XP/Vista/7 Mac OS 10.X



293262 / DA-73300 USB 3.0 Sharing Switch, 2 PCs - 1 end device

DIGITUS® USB 2.0 Sharing Switch

Never need to transfer USB devices between devices again – the USB Sharing Switch makes it possible to share one USB device (e.g. printer, scanner) between 4 PCs



- Compatible with USB 2.0 specifications
- Use one USB 1.1/2.0 end device with 4 PCs
- Hot-Key-switching via keyboard between end devices/PCs
- Supports operating systems: Windows 7/Vista/XP/2000, Mac 9.2 and higher
- No additional power supply unit required – power supply via USB



DA-70135-1



DA-70136-1



293224 / DA-70135-1 USB 2.0 Sharing Switch, 2 PCs - 1 end device

293231 / DA-70136-1 USB 2.0 Sharing Switch, 4 PCs - 1 end device

USB HDD Adapter and Cable

DIGITUS® USB 3.0 for SATA III adapter cable



Turns every SATA hard disk/SSD into an ultra-fast external USB 3.0 drive – ideal for backup and service

- Supports 2.5/3.5 SATA hard disks/SSDs
- Supports SATA 6.0 Gbps/3.0 Gbps/1.5 Gbps data transfer rate
- Supports data transfer: Super-Speed (5 Gbps)/High-Speed (480 Mbps)/Full-Speed (12 Mbps)/Low-Speed (1.5 Mbps)
- Compatible with USB 3.0 specifications, backward compatible with USB 2.0 and USB 1.1
- Compatible with USB Mass Storage Class
- “Plug & play” and hot-swappable
- Compatible with Serial ATA3
- High-speed data transfer, low power consumption
- Incl. power supply unit, input: AC 100-240V, 50/60Hz, Output: DC 12V2A
- 1.2M USB 3.0 to SATA III cable
- Suitable for Windows 7/Vista/XP



308546 / DA-70326 USB 3.0 to SATA III adapter cable

DIGITUS® USB 2.0 Mini IDE & SATA cable



Turns any SATA or IDE HDD/SSD into a convenient to use external USB drive - ideal for backups and service

- Connections for IDE 3.5, IDE 2.5 (40-pin) and SATA HDD
- Supports 2.5/3.5 IDE and SATA HDDs (and 1.8 HDDs only with suitable adapter, not included)
- Suitable for SATA and SATA II HDDs
- Supports USB 2.0 480Mbps High-Speed and 12Mbps Full-Speed USB operation
- Supports ATA/ATAPI Ultra DMA Mode, PACKET command feature set and LBA48 bit addressing mode
- LEDs indicating work status
- Cable length: 90cm
- Supports Windows 7, Vista, XP and Mac OS 10.x



308478 / DA-70200-1 USB 2.0 Mini IDE & SATA cable

DIGITUS® USB 3.0 IDE & SATA cable



Turn your SATA/IDE hard disk into an external USB drive!

- Supports 2.5/3.5 IDE and SATA hard disks
- Supported data transfer rates: Super-Speed (5Gbps)/High-Speed (480Mbps)/Full-Speed (12Mbps)/Low-Speed (1.5Mbps)
- Supports SATA 1.5Gbps/3.0Gbps transfer rate
- Compatible with Universal Serial Bus 3.0 - specifications, backward compatible with USB 2.0, 1.1 - specifications
- Compatible with USB Mass Storage Class
- “Plug & play” and hot-swappable
- Incl. power supply unit 12V/2A
- Compatible with Serial ATA2.6



306481 / DA-70325 USB 3.0 IDE & SATA cable

DIGITUS® USB 3.0 to SATA II adapter cable



Turns every SATA or IDE hard disk and SSD into an easy to handle external USB drive!

- Connections for IDE 3.5, IDE 2.5 (40-Pin) as well as SATA hard disks
- Supports 2.5/3.5 IDE and SATA hard disks (and 1.8 hard disks with adapter, not included in scope of delivery)
- Suitable for SATA and SATA II hard disks
- Supports USB 2.0 480Mbps High-Speed and 12Mbps Full-Speed operations
- Supports ATA/ATAPI Ultra DMA Mode, PACKET Command Feature Set and LBA48 Bit addressing
- LEDs show operational status
- Cable length: 90cm
- Suitable for Windows 7/Vista/XP/Mac OS 10.x



322740 / DA-70300-1 USB 3.0 to SATA II adapter cable

USB HDD Adapter and Cable



DIGITUS® USB 2.0 for IDE/SATA adapter cable



Easy Connection - Fast Transferring - Backup/Files for every HDD/SSD

- Supports 2.5/3.5 IDE and SATA hard disks (and 1.8 hard disks with adapter, not included in scope of delivery)
- Supports SATA, SATA II
- Compatible with USB 2.0 (High-Speed)
- Compatible with USB Mass Storage Class
- Contains a USB-Y cable for better and more stable power supply
- Supports 480Mbps High-Speed (HS) and 12Mbps Full-Speed USB operational speeds
- Supports ATA/ATAPI Ultra DMA Mode
- Supports ATA/ATAPI PACKET Command Feature Set
- Supports ATA/ATAPI LBA48-bit Addressing Mode
- High-Speed data transfer, low power consumption
- Blue LEDs for status display
- Delivery includes power supply unit
- Suitable for Windows 7/Vista/XP/Mac OS 10.X



311287 / DA-70148-3 USB 2.0 IDE & SATA cable

DIGITUS® 3.5 hard disks IDE to SATA Interface Converter



The comfortable solution for expanded use of already existing IDE hard disks

- Suitable for 3.5 IDE hard disks, converts IDE into a SATA interface
- Easy to install: Connect converter to 3.5 IDE hard disk and fasten with two screws; hard disk is now ready to be connected with the SATA interface or for operations in a SATA docking station
- The enclosed metal casing allows easy installation without tangling cables
- Supports SATA and SATA II standards with up to 1.5Gbps transfer speed
- Supported ATA/ATAPI data transfer rates 66, 100, 133 and 150MB/s
- SATA "Plug and Play" operations, no additional software necessary for operations
- Supports hard disks from Maxtor, Samsung, IBM, Hitachi, Seagate and Western Digital (adapter incl.)



283867 / DA-70545 3.5 Hard disks IDE to SATA Interface Converter

DIGITUS® USB 2.0 for IDE/SATA adapter cable



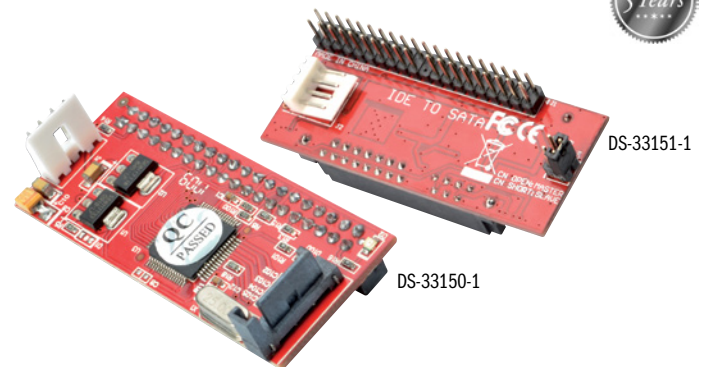
High-speed data transfer with low power consumption

- Supports 2.5/3.5/5.25 IDE and SATA hard disks
- Supports SATA, SATA II
- Compatible with USB 2.0 (High-Speed)
- Compatible with USB Mass Storage Class
- High USB data transfer rate up to 480Mbps
- High-speed data transfer, low power consumption
- A power supply unit has not been included; please use your connections at your desktop computer (see user manual)
- Suitable for Windows 7/Vista/XP/Mac OS 10.X



288305 / DA-70202 USB 2.0 to IDE & SATA adapter cable, without power supply unit

DIGITUS® IDE to SATA/SATA to IDE adapter



Ideal for use with older motherboards that do not support SATA connections

- Enables use of storage devices with SATA connection to a IDE controller.
- Stand-alone Ultra ATA on Serial ATA Bridgeboard Design
- Serial ATA 1.0 specifications, revision 2.2 conform
- Chipset: SIL3811
- Transfer rate: 1.5Gb/s
- Supports all kinds of SATA Storage Devices (DVD, DVD-RAM, MO, CD-ROM, CD-RW, Hard Disk, ...)
- Compact dimensions for direct connection to SATA hard disks
- Board design: Horizontal version



317791 / DS-33150-1 SATA to IDE Adapter

317807 / DS-33151-1 IDE to SATA Adapter

USB Docking Stations

DIGITUS® SATA DUAL HDD Docking Station

Supports fast and easy HDD reproduction via pressing a button

- Integrated standalone hard disks "Clone" function via pressing a button
- Supports Standard SATA Hard disks 2.5 and 3.5
- Data transfer rate up to 480Mbps USB 2.0
- Compatible with SATA I and SATA II data transfer rate up to 3Gbps
- With USB and eSATA connections
- Easy handling and installation of hard disks
- "Plug & play" and hot-swappable
- The integrated hot swap function provides secure removal of the hard disk
- Power LED display
- Incl. USB 2.0 A/M and eSATA cable, manual and power supply unit
- Supports Windows 7/Vista/XP/Mac OS X/Linux



282525 / DA-70544 SATA DUAL HDD Docking Station, eSATA and USB

DIGITUS® Hard Disk USB 3.0 Cool Dock, for 2.5/3.5 HDDs

Save your most precious moments

Supports USB 3.0 to Serial ATA Interface, transfer rate up to 5 Gbps

- Supports 2.5/3.5 SATA hard disks
- Supports SATA, SATA II
- Backup function via pressing a button
- Integrated 80mm fan
- Alarm display with excessive temperature
- LED display for activity and data transfer
- Plug and Play and Hot-Plugging
- Hard disks easy to install and to remove
- Incl. power supply unit (12V/2A)
- Supports Windows 7/Vista/XP

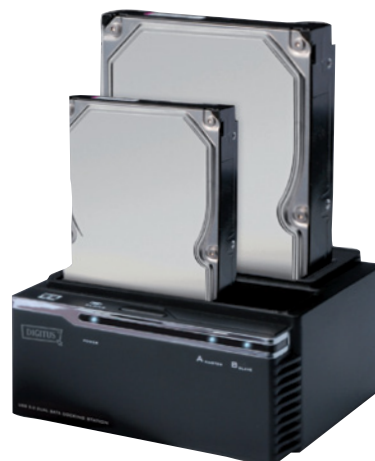


287414 / DA-70546 USB 3.0 Cool Dock

DIGITUS® USB 3.0 SATA Dual Docking Station

Ideal for backups, data archiving and service applications

- One-Touch Backup-Function (multi-language driver)
- Two hard disks can be read or written to simultaneously
- Supports USB 3.0 Super-Speed with up to 5 Gbps, USB 2.0 High-Speed with up to 480 Mbps and USB 1.1 Full-Speed with 12 Mbps
- Supports hot swapping of connected devices
- Supports SATA 1.5Gbps/3.0Gbps transfer rate
- Supports hard disks with a size of over 2TB
- Supports Windows 7/Vista/XP



287926 / DA-70547 USB 3.0 SATA Dual Docking Station

DIGITUS® External hard disk enclosure 2.5, IDE or SATA on USB 2.0



Easy installation, screw-less design

- Easy screw-less installation of a hard disk
- Modern design in piano lacquer optics
- Suitable for Standard-IDE hard disks 2.5
- Compatible with USB 2.0 specifications
- Supports data transfer rates up to 480Mbps
- LED display: Power (red), access (blue)
- Supports hot-plugging and is plug and play ready
- Power supply via USB port
- Size: 13.5cm x 8.5cm x 1.5cm
- Suitable for Windows 7/Vista/XP/Mac OS 10.X



297918 / DA-71001 External drive enclosure 2.5, IDE on USB 2.0

297925 / DA-71002 External hard disk enclosure 2.5, SATA on USB 2.0

DIGITUS® External hard disk enclosure 3.5, IDE to USB 2.0/3.5 SATA to USB 2.0



Modern design in piano lacquer optics for 3.5 hard disks

- Easy screw-less installation of a hard disk
- Suitable for Standard-IDE hard disks 3.5
- Compatible with USB 2.0 specifications
- Supports data transfer rates up to 480Mbps
- LED display: Power (red), access (blue)
- Supports hot-plugging and is plug and play ready
- Size: 19.6cm x 11.1cm x 3.5cm
- Suitable for Windows 7/Vista/XP/Mac OS 10.X



297949 / DA-71050 External hard disk enclosure 3.5, IDE to USB 2.0

297956 / DA-71051 External hard disk enclosure 3.5, SATA to USB 2.0

DIGITUS® External hard disk enclosure 2.5, SATA on USB 3.0



Simple screw-less installation of a 2.5 hard disk with USB 3.0 specifications

- Modern design in piano lacquer optics
- Suitable for Standard SATA hard disks 2.5
- Compatible with USB 3.0 specifications and backward compatible with USB 2.0 High-Speed (480Mbps)
- USB 3.0 data transfer rate up to 5Gbps
- LED display: Power (red), access (blue)
- Supports hot-plugging and is plug and play ready
- Power supply via USB port
- Size: 13.5cm x 8.5cm x 1.5cm
- Supports Windows 7/Vista/XP



297932 / DA-71030 External hard disk enclosure 2.5, SATA on USB 3.0

DIGITUS® External hard disk enclosure 3.5, SATA on USB 3.0



Easy screw-less installation of a 3.5 hard disk with USB 3.0 specifications

- Modern design in piano lacquer optics
- Suitable for Standard SATA hard disks 3.5
- Compatible with USB 3.0 specifications and backward compatible with USB 2.0 High-Speed (480Mbps)
- USB 3.0 data transfer rate up to 5Gbps
- LED display: Power (red), access (blue)
- Supports hot-plugging and is plug and play ready
- Size: 19.6cm x 11.1cm x 3.5cm
- Supports Windows 7/Vista/XP



297963 / DA-71035 External hard disk enclosure 3.5, SATA to USB 3.0

USB Datalink Cable

DIGITUS® USB Datalink Cable

Transfers images, music, movies and documents within seconds! Ideal for the “quick on the run” data exchange from PC to PC in the office or at home.

Connect and go! The USB Datalink cable makes fast and simple data exchange between two PCs without complicated network configuration possible. No cumbersome handling with disks or CD ROMs.

- Plug and Play Datalink cable for simple PC to PC file transfer
- USB Host-to-Host communication
- Simple to use software with additional functions in the scope of delivery
- Emulates a network connection and enables shared Internet use
- Cable length 1.50m
- LED operating display
- USB 1.1 & USB 2.0 compatible
- Supports Windows 7/Vista/XP



278825 / DA-70010-1 USB Datalink Cable

DIGITUS® USB Datalink Cable

Super-fast data exchange for PC and Mac without network!

Connect and go! The USB Datalink cable enables fast and simple data exchange between two PCs and/or Macs without complicated network configuration. No cumbersome handling with disks or CD ROMs. Transfers images, music, movies and documents within seconds! Ideal for “quick on the run” file exchange in the office or at home.

- Plug and Play Datalink cable for simple file transfer from PC to PC and/or Mac computers (EasyMacCopy)
- USB Host-to-Host communication
- Operations without driver installation
- Simple to use software with additional functions in the scope of delivery
- Transfer personal data and settings from one PC to the other with “EasyMover”
- PC to PC file and complete Microsoft Outlook synchronisation as well as folder synchronisation
- CD ROM remote access (reads data from drive of the connected PC)
- Cable length 1.50m
- LED operating display
- USB 1.1 & USB 2.0 compatible
- Suitable for: Windows 7/Vista/XP/Mac OS X



279228 / DA-70011-1 USB Datalink Cable for PC and Mac

DIGITUS® USB - Serial Adapter, USB 1.1



Easy connection of serial devices via USB port

- Supports the RS232 Serial Interface
- Corresponds with USB 1.1-Standard
- Data transfer rates up and above 1Mbps
- Supports Remote-Wake-up and Power-Management
- For use with, e.g., PDA/GPS, modems and many other serial devices
- Chipset: PL2303RA
- Incl. USB extension cord, about 80cm
- Supports Windows 7/Vista/XP/Mac OS X/Linux



326144 / DA-70155-1 USB - Serial Adapter, USB 1.1

DIGITUS® USB 2.0 to RS232 cable



Connects simultaneously up to 4 serial devices via USB port with the PC

- Simple connection of two serial devices simultaneously via USB
- Supports the RS232 Serial Interface
- Corresponds with USB 2.0-Standard
- Data transfer rates up and above 1Mbps
- Supports Remote-Wake-up and Power-Management
- For use with, e.g., PDA/GPS, modems and many other serial devices
- Chipset: FTDI/FT232RL
- Cable length 1.50m
- Supports Windows 7/Vista/XP/Mac OS X/Linux



308522 / DA-70158 USB 2.0 to 2x RS232 cable

308539 / DA-70159 USB 2.0 to 4x RS232 cable

DIGITUS® USB - Serial Adapter, USB 2.0



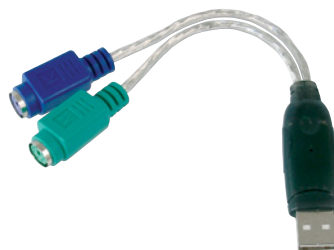
Connects serial devices via USB port to a PC

- Easy connection of serial devices via USB port
- Supports the RS232 Serial Interface
- Corresponds with USB 2.0-Standard
- Data transfer rates up and above 1Mbps
- Supports Remote-Wake-up and Power-Management
- For use with, e.g., PDA, modems and many other serial devices
- Chipset: FTDI/FT232RL
- Incl. USB extension cord, about 80cm
- Supports Windows 7/Vista/XP/Mac OS X/Linux



271611 / DA-70156 USB - Serial Adapter, USB 2.0

DIGITUS® USB - PS/2 Adapter



Keep on using your old input devices at the USB port – this adapter connects a PS/2 mouse and a keyboard to a single USB connection

- Supports PCs and SUN Computer
- 2x MiniDIN 6-pin socket for PS/2 mouse and keyboard
- Power supply to the connected USB devices via the interface
- USB connection supports Plug and Play
- USB connecting cable with USB-A-plug
- Suitable for Windows 7/Vista/XP/Mac OS 10.X



117933 / DA-70118 USB > PS/2 Adapter

DIGITUS® USB - Serial Adapter, USB 2.0



Connect your serial devices to a PC via USB port

- Complies with USB 2.0 specifications
- Supports the RS485 Serial Interface
- For use with, e.g., PDA, modems and many other serial devices
- Data transfer rates from up to 3Mbps
- Chipset: FTDI/FT232RL
- Incl. USB extension cord, about 80cm
- Supports Windows 7/Vista/XP/Mac OS X/Linux



307433 / DA-70157 USB - Serial Adapter, USB 2.0

DIGITUS® Parallel on USB printer cable



Installs in seconds – perfect for use with notebooks and desktop PCs without parallel interface

- USB A on CENT 36 plug
- Supports EPP/ECP and bidirectional printing
- Data transfer rate up to 1.216 Mbps (ECP Mode)
- Cable length: 1.8m



166306 / DC USB-PM1 Parallel > USB-printer cable 1.8m

Keyboards

DIGITUS® “Blueshine ZX” illuminated multimedia keyboard

Light up your keys!

- Illuminated keyboard with multimedia keys
- The keys light up in blue via pressing a button
- Separate key for illuminating keyboard
- Silent and sensitive low-profile keys for superior writing comfort
- 8 multimedia keys for operating applications and media
- Plug and Play installation – no additional software required
- USB connecting cable length 130cm
- USB type A plug
- Size: 401 x 162 x 25mm
- Supports Windows 7/Vista/XP
- Also ideal for 19” cabinet
- Color: black



285281 / DA-20201 “Blueshine ZX” illuminated multimedia keyboard

DIGITUS® “Black Line S” USB keyboard

The comfortable keyboard for at home or the office

- Silent and fast responding keyboard with low profile keys
- Integrated number block in standard size
- Plug and Play installation – no additional software required
- Supports Windows 7/Vista/XP
- Color: black



318231 / DA-20142 “Black Line S” USB keyboard

DIGITUS® “Silver Line” USB multimedia keyboard

The smart keyboard to operate media

- Silent and fast responding keyboard with low profile keys
- 8 multimedia keys to operate applications and media
- Plug and Play installation – no additional software required
- USB connecting cable length 130cm
- USB Type A plug
- Size: 458 x 157 x 23mm
- Supports Windows 7/Vista/XP
- Color: black/silver



285274 / DA-20146 “Silver Line” USB multimedia keyboard

DIGITUS® Wireless Optical Ergonomics Mouse

More comfort and reliability with 2.4GHz radio technology

Wireless optical 5 keys mouse with scroll wheel

- High-resolution optical sensor with selectable 800/1600dpi, works on almost any surface
- Power supply with a standard AAA battery
- Auto power-off function
- LED display for dpi switch and battery warning
- USB nano-receiver with reliable 2.4 GHz technology, range up to 10m
- Ergonomically designed for right-handed individuals with rubber coating
- Additional function keys for dpi selection and page forward/back
- Size: 11.6 x 6.2 x 3.8 cm
- Weight: 102g
- Suitable for Windows 7/Vista/XP/Mac OS 10.X



283829 / DA-20128 Wireless Optical scroll mouse



DIGITUS® Optical Office Mouse

Fast and easy navigation with a comfortable scroll wheel

Optical 3 key mouse with scroll wheel

- High-resolution optical sensor with 800dpi
- Works on almost any surface
- Ergonomic design for right and left handers
- USB Type A connection
- Cable length 1.5m
- Size: 11.6 x 6.2 x 3.8 cm
- Weight: 102g
- Suitable for Windows 7/Vista/XP/Mac OS 10.X



301776 / DA-20127-1 Optical Office Mouse, 3 key mouse with scroll wheel



Mouse Pads

DIGITUS® Mouse pads for laser mice



Precise laser guidance through special coating

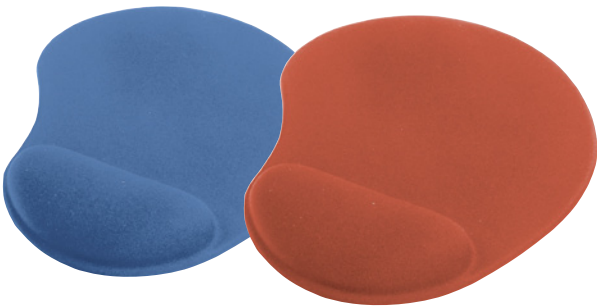
- Dimensions: 320 x 265 x 3mm
- For gaming use
- Logo print and other colors at request



202967 / DA-50130 320 x 265 x 3mm, blue

202974 / DA-50131 320 x 265 x 3mm, black

DIGITUS® Mouse pads with handrest



The soft and flexible pad allows relaxing and comfortable work at the computer at home or in the office

- Ergonomically designed mouse pads
- Gel-filled support for the wrist
- Material: Polyester + PU +PU Gel
- Color: Blue
- Dimensions: 225 x 180 x 3mm



104995 / DA-50122 Mouse pad with handrest, blue

105008 / DA-50123 Mouse pad with handrest, red

DIGITUS® Mouse pads



Protects table surfaces against scratches and damages, suitable for ball and optical mice.

- Material: Polyester + EVA foam
- Dimensions: 250 x 220 x 3mm
- Logo print and other colors at request



073222 / DA-50101 250 x 220 x 3mm, red

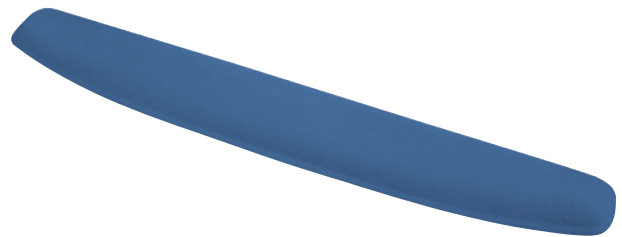
073246 / DA-50102 250 x 220 x 3mm, blue

073253 / DA-50103 250 x 220 x 3mm, green

073260 / DA-50104 250 x 220 x 3mm, black

073277 / DA-50105 250 x 220 x 3mm, grey

DIGITUS® Keyboard handrest



The soft and ergonomic handrest ensure comfortable work at the computer at home or in office

- Ergonomic, gel-filled wrist support – supports lower arm when using the keyboard
- Material: Polyester + PU +PU Gel
- Dimensions: 475 x 80 x 20mm



105015 / DA-50124 Keyboard with handrest, blue

DIGITUS® 2.1 Mini Sub-Woofer System



The ideal, powerful and compact audio unit for the PC!

- 2.1 Multimedia speaker
- Subwoofer in wooden casing
- Magnetically shielded
- Overall maximum performance: 16 watts
- Volume and bass control in front panel
- Performance of speaker unit: Woofer: Speaker with 10W; satellite: 2x Speakers, 3W
- Frequency range: 30Hz-20kHz
- Product dimensions: Woofer: 135 x 193 x 204; satellite: 72 x 71 x 151mm
- Accessories: 3.5 mm jack plug stereo connecting cable



270911 / DA-10252 2.1 Mini Subwoofer System

DIGITUS® Multimedia microphone with stand



Ideal for podcast productions and text-to-language applications

- Compact multimedia microphone with stand, adjustable tilt angle
- Condenser microphone
- Frequency range: 50Hz - 16000Hz
- Sensitivity: -60dB +/- 3dB (0dB= 1V/ μ BAR at 1KHz)
- Operating voltage: 1V-10V (Standard = 3V)
- Cable length: 1.8m
- Connecting plug: 3.5mm, stereo plug
- Weight: 125g



101017 / DA-10101 Multimedia microphone with stand

DIGITUS® Stereo Speaker Set 360W PMPO



The full spectrum of sound in a compact and space saving speaker system

- Stereo-Multimedia-Speaker Set
- Music output: max. 6W altogether
- Front side: On/Off switch, volume control and LED display
- Magnetically shielded headphone connection
- Speaker units: 2x Speakers, 3W
- Frequency range: 80Hz - 18kHz
- Product dimensions: 81 x 207 x 81mm



190066 / DA-10240 Speaker Set 360W PMPO

DIGITUS® Multimedia microphone with stand



Ideal for podcast productions and text-to-language applications

- Compact multimedia microphone with stand, adjustable tilt angle
- Condenser microphone
- Frequency range: 50Hz - 16000Hz
- Sensitivity: -60dB +/- 3dB (0dB= 1V/ μ BAR at 1KHz)
- Operating voltage: 1V-10V (Standard = 3V)
- Cable length: 1.8m
- Connecting plug: 3.5mm, stereo plug
- Weight: 90g



210566 / DA-10102 Multimedia microphone with stand

Speaker and Microphones

DIGITUS® USB Phone

Comfortable Internet telephony without separate headset or microphone

- USB interface, Plug and Play
- Simple handling
- Power supply via USB, no external power source needed
- Special sound card for operating this device is not required
- For use as microphone/loudspeaker with all PC-based softphones such as Skype, MSN, ICQ, X-lite, Dialpad, MediaRing, Net2phone, etc.

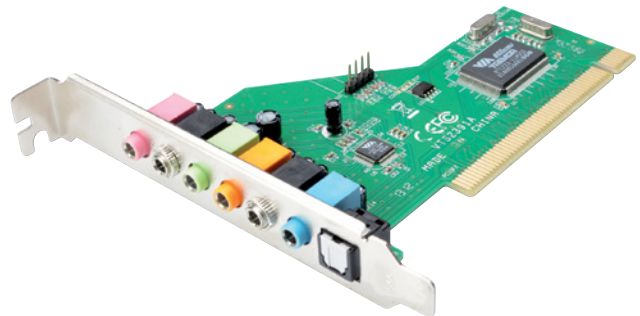


185222 / DA-70772 USB phone

DIGITUS® 7.1 PCI Sound Card

The ideal partner for surround music & movie playback as well as more realistic gaming

- Simultaneous recording and playback
- Full-Duplex 8CH DAC/2CH ADC
- Supports sample rates of 48/44.1kHz for recording and playback
- Supports the newest Dolby® Digital EX and DTS ES 6.1/7.1 CH DVD sound playback
- DirectSound™ 3 HW acceleration
- Corresponds with PCI Rev. 2.2 with Bus-Mastering Mode
- Corresponds with ACPI Power-Down Management
- System requirements: PC of the Pentium class with available PCI slot; DirectX 8.1 or higher
- Suitable for Windows 7/Vista/XP



317753 / DS-33700-1 7.1 PCI sound card

DIGITUS® 7.1 USB Sound Box

Enjoy true multi-channel surround sound simply via the USB connection

- Simultaneous recording and playback
- Corresponds with the USB audio device class specifications 1.0 and the USB HID class specifications 1.1
- Supports sample rates of 48/44.1kHz for recording and playback
- 7.1 Surround loudspeaker connections
- Connection via 3.5mm sockets
- S/PDIF optical digital input/output
- USB 2.0 compliant
- Supports Windows 7/Vista/XP



276494 / DA-70800 7.1 USB Sound Box

DIGITUS® Autofocus USB Microscope camera

Brings small thing sharp and crisp on to the PC

- Universal Autofocus USB Microscope Camera to connect to PC
- Optics consisting of 7 glass lenses, guaranteed clear pictures
- Magnification factor 50 - 170x, continuously adjustable
- Optical Autofocus System
- 1.3 Megapixel Sensor (1/4 inch)
- Simple and continuous setting of the desired zoom factor
- Cable remote for picture taking and LED brightness
- Metal stand allows secure standing
- Resolution: Video and still photo up to 1.280 x 1.024 Pixel
- Frame repeat rate max. 30 fps (images per second)
- Color depth: 24bit RGB
- Automatic white balance and exposure
- Light source: 8 light white LEDs (switchable and adjustable)
- Incl. software for processing and evaluation
- USB 2.0 interface, power supply per USB
- Supports Windows 7/Vista/XP



284123 / DA-70352 USB Autofocus Microscope camera

DIGITUS® USB Microscope camera

Brings little things very large to the PC monitor

- Universal USB Microscope camera to connect to PC
- Magnification factor 10-230x
- Video frame repeat rate max. 30 fps at 600 Lux illumination
- 1.3 Megapixel Sensor (1/3.25")
- Manual focus from 10mm to indefinite
- Resolution video: 1.280 x 1.024, 640 x 480, 320 x 240 Pixel
- Resolution still photo up to 1.280 x 1.024 Pixel
- Color depth: 24bit RGB
- Shutter speed: 1sec. to 1/1000 sec.
- Supports AVI-Video-Format
- Automatic white-balance and exposure
- Light source: 8 light white LEDs (switchable and adjustable)
- Incl. software for processing and evaluation
- USB 2.0 connection
- Supports Windows 7/Vista/XP



283904 / DA-70351 USB Microscope camera

DIGITUS® High Resolution Video Grabber

Copies old VHS tapes onto DVD and CD

- High-Speed USB 2.0 data transfer rate for excellent audio/video recordings
- Encodes directly MPEG1/MPEG2 and other formats, ideal for video applications
- Enables moving pictures with up to:
 - 25 images per second with a resolution of 720*576(PAL) and
 - 30 images per second with a resolution of 720*480(NTSC)
- Composite, analogue S-Video input, multiple NTSC and PAL system support
- Video input: 1x RCA composite, 1x S-Video
- Audio input: For Windows XP and Vista, via USB, for Windows 2000, via the soundcard
- Video system: Multiple NTSC and PAL system support
- Simple and easy direct burn function for the fast generating of VCD/SVCD/DVD
- For the VCD /SVCD /DVD burn support no additional burn software is necessary
- Supports the control of brightness, contrast, color, saturation and sharpness
- Supports CD-R/RW, DVD+/-R, DVD+/-RW
- Plug and Play, simple installation
- Dimensions: 81 x 30 x 15mm
- Supports Windows 7/Vista/XP/2000 with DirectX 9.0 or higher



266112 / DA-70820-1 High Resolution Video Grabber

CD- /DVD- /Blue-ray Storage

DIGITUS® CD-ROM/DVD/Blue-ray storage pocket book for 48 CDs/DVDs or 200 CDs/DVDs



For the simple transport of CDs, DVDs and Blue-rays, also well suitable for archiving

- High-quality material in black
- Space for 48/200 CDs, DVDs, HDDVDs or Blue-rays
- Dimensions: 17 x 17 x 7.5cm/31 x 32 x 10cm



136019 / DA-10210 CD-ROM/DVD/Blue-ray storage pocket book, 48 CDs/DVDs

179801 / DA-10220 CD-ROM/DVD/Blue-ray storage pocket book, 200 CDs/DVDs

DIGITUS® CD-ROM/DVD/Blue-ray cases



Protects your optical media - CD, DVD, Blue-ray, etc.

- Suitable for CDs, DVDs, HD DVDs, Blue-rays
- Black plastic, sleeve
- Packaging unit: 5 pieces
- Dimensions: 190 x 130 x 5mm



176206 / DA-DVD-SC CD-ROM/DVD/Blue-ray single case, 5 pcs.

132899 / DA-DVD-DC CD-ROM/DVD/Blue-ray two-times case, 5 pcs.

DIGITUS® CD-ROM/DVD/Blue-ray storage pocket book for 48 CDs/DVDs or 96 CDs/DVDs



For the simple transport of CDs, DVDs and Blue-rays, also well suitable for archiving

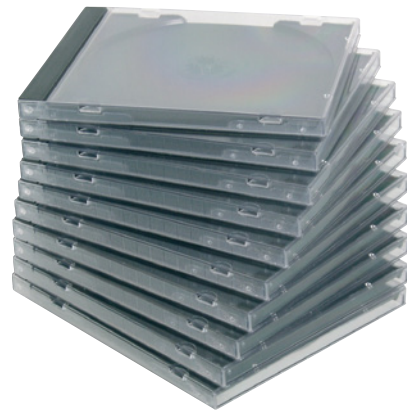
- High-quality material in black
- Space for 48/96 CDs, DVDs, HDDVDs or Blue-rays
- Dimensions: 17 x 29 x 4cm/18 x 29 x 8cm



136026 / DA-10211 CD-ROM/DVD/Blue-ray storage pocket book, 48 CDs/DVDs

136033 / DA-10212 CD-ROM/DVD/Blue-ray storage pocket book, 96 CDs/DVDs

DIGITUS® CD-ROM/DVD/Blue-ray cases



Protects your optical media - CD, DVD, Blue-ray, etc.

- Suitable for CDs, DVDs, HD DVDs, Blue-rays
- Transparent plastic
- Packaging unit: 10 pieces



132882 / DA-CD-JC CD-ROM Jewel case, 10pcs

132875 / DA-CD-SC CD-ROM Slim Type case, 10pcs

Pocket and Compact KVM Switch



Product comparison table pocket and compact KVMs

	Console/working side				Supports PC connections					Usable cable	Specialties
	Monitor	Keyboard	Mouse	Sound	Number of PCs	Monitor	Keyboard	Mouse	Sound		
DS-16101	VGA	USB			2	VGA	USB			USB cable to connect to 2 PCs	KM switch; switch possible via mouse movement
DC 0C12	VGA	PS/2	PS/2		2	VGA	PS/2	PS/2		Steady integrated PC connection cable	
DC 0C12A	VGA	PS/2	PS/2	Speaker	2	VGA	PS/2	PS/2	Speaker	Steady integrated PC connection cable	Audio support
DC 0C12U	VGA	PS/2	PS/2		2	VGA	USB			Steady integrated PC connection cable	Integrated PS/2 on USB converter
DS-11200	VGA	PS/2	USB		2	VGA	USB			Steady integrated PC connection cable	
DS-12200	VGA	PS/2	USB		4	VGA	USB			Steady integrated PC connection cable	
DS-11402-1	VGA	PS/2	USB	Speaker	2	VGA	USB	Speaker		Integrated PC connection cable, removable	Audio support, audio separately switchable
DS-11404	VGA	PS/2	USB	Speaker	2	VGA	USB	Speaker		Steady integrated PC connection cable	Data transfer between connected PCs, pic-in-pic function
DC 1C612I	VGA	PS/2	PS/2		2	VGA	PS/2	PS/2		Integrated PC connection cable, removable, alternative cable types: ●	
DC 1C614I	VGA	PS/2	PS/2		4	VGA	PS/2	PS/2		Integrated PC connection cable, removable, alternative cable types: ●	
DS-11802-1	DVI	USB	USB	Speaker	2	DVI	USB	Speaker		Integrated PC connection cable, removable	DVI; audio support, audio switchable separately
DS-11900	HDMI	USB	USB	Speaker *2	2	HDMI	USB	Speaker		Integrated PC connection cable, removable	Sounds over HDMI connection

DIGITUS® KM Switch with data transfer

The simple solution for data transfer and remote control for your notebook and desktop PC

- The KM function allows simultaneous use of 2 computers with the respective monitors with only one keyboard and a mouse
- File and data transfer between 2 computers
- Copying and adding of text between the computers
- Pic-in-Pic (PIP) function
- Compact design requires only one USB 2.0 connection respectively
- USB 2.0 compatible
- Integrated driver and software, works without installation of CD-ROM
- No external power supply required
- Switching between computers through movement of the mouse or via software
- Supports Windows 7/Vista/XP



Data transfer



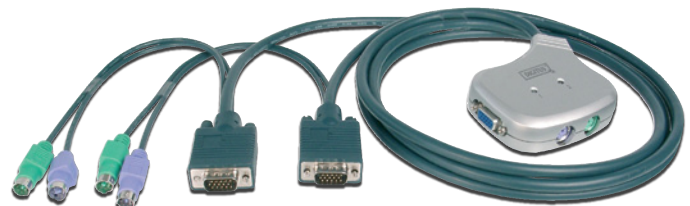
273837 / DS-16101 KM switch with data transfer

DIGITUS® Pocket KVM Switch PS/2, 2-Port

Unpack and connect – free your working place from unnecessary cable tangle

Control 2 PCs via a PS/2 keyboard, a PS/2 mouse and one monitor

- Simple installation – no additional software required
- PC selection via Hot-Key
- Excellent video quality – up to 1.920 x 1.440 Pixel, 200MHz band width
- Supports DDC, DDC2, DDC2B, DDC2AB
- Hot-Plug and Play
- Keyboard and mouse emulation for error-free boot of the computer
- Auto-scan function (5, 10, 15, 20, 25, 30 sec. selectable)/Auto-skip function
- No external power supply required
- KVM cable to connect 2 PCs integrated, 1.2m
- Supports Standard-PS/2 mouse, Microsoft IntelliMouse as well as full support for the Microsoft IntelliPoint 5.0 mouse driver & Logitech Mouse ware drivers
- Supports operating systems: Windows 95/98/98SE/ME/NT 4.0/2000/XP/Vista/DOS/Linux/Novell Netware/FreeBSD



159056 / DC 0C12 Pocket KVM Switch PS/2, 2-Port

159063 / DC 0C12A Pocket KVM Switch PS/2 with audio, 2-Port

174325 / DC 0C12U Pocket KVM Switch PS/2, 2-Port for USB PC

Pocket and Compact KVM Switch

DIGITUS® USB Pocket KVM Switch for DVI, 2-Port

DVI
+ AUDIO



The most simple and fastest possibility to combine 2 PCs/
Notebooks with one working place

- Control of 2 PCs via one USB keyboard, one USB mouse and one DVI monitor
- Full DVI-D support
- Simple installation – no additional software required
- PC selection via hot key or push button
- Excellent video quality up to 1.920 x 1.080 Pixel at 60Hz
- Supports DDC, DDC2 Monitors
- Audio IN/OUT – support separately switchable
- “Plug and Play” and hot-swappable
- Keyboard and mouse emulation for error-free booting
- Auto-scan (5 to 60 sec., selectable)
- No external power supply needed for external power supply
- Incl. PC-KVM cable for 2 PCs, length 1.2m
- Supports all Windows, Linux and Mac operational systems with USB support



273301 / DS-11802-1 USB Pocket KVM Switch for DVI, 2-Port

USB Pocket KVM Switch for HDMI, 2-Port

AUDIO via
HDMI-Signal



Enjoy full HD video and sound from 2 PCs that share a set of
HDMI monitors, keyboards and mouse

- Control of 2 PCs via one keyboard, one USB mouse and one HDMI monitor
- Full support of HDMI properties
- Compatible to HDMI high speed
- Simple installation – no additional software required
- Excellent video quality up to 1.920 x 1.200 Pixel at 60Hz or 1080p
- Audio support via HDMI connection
- “Plug and Play” and hot-swappable
- Keyboard and mouse emulation for error-free booting
- Auto-scan (Interval 10 sec.)
- No external power supply needed for external power supply
- Incl. PC-KVM cable for 2 PCs, length 1.2m
- Supports all Windows, Linux and Mac operational systems with USB support



290773 / DS-11900 USB Pocket KVM Switch for HDMI, 2 Port

Pocket and compact KVM Switch



DIGITUS® Pocket KVM Switch with data transfer function

AUDIO +
Data transfer



The easiest and fastest way to combine 2 PCs/
notebooks with a working place.

- Controls 2 PCs with a set of keyboard, mouse and loudspeakers
- Supports data transfer between 2 computers
- Data-Link function conform with USB High-Speed specifications
- Compatible with USB 1.1 and 2.0 specifications
- Supports pic-in-pic function
- Select PC via pressing a button, hot key command or software application
- Independent switching of KVM and audio channel
- Maximum resolution up to 2,048 x 1,536 pixels
- Supports DDC, DDC2 and DDC2B
- No external power supply needed
- Integrated set of cables, length 1.2m
- Dimensions: 82 x 88 x 25mm, 355g
- Supports Windows 7/Vista/XP



285502 / DS-11404 Pocket KVM switch with data transfer function

DIGITUS® Pocket KVM Switch USB



Unpack and connect – free your work place from
cumbersome cables

- Control 2 to 4 PCs via a USB keyboard, a mouse and a monitor
- Simple installation – no additional software needed
- Select PC via hot keys or mouse functions
- Excellent video quality – up to 2,048 x 1,536 pixel, 200MHz band width
- Supports DDC, DDC2, DDC2B, DDC2AB
- Hot-Plug and Play
- Keyboard and mouse emulation for error-free computer booting
- Auto-scan function (5, 10, 15, 20, 25, 30 sec. selectable) / Auto-skip function
- No external power supply needed
- KVM cable to connect 2 PCs integrated, 1.2 m
- Suitable Windows/Mac/Linux



DS-11200



DS-12200

289517 / DS-11200 Pocket KVM Switch USB, 2-Port

289555 / DS-12200 Pocket KVM Switch USB, 4-Port



Desktop KVM Switch, Basic-Line

Product comparison table Desktop-KVMs - Basic-Line

	Console/Work place				supported PC connections				Usable types of cables:	Specialties	
	Monitor	Keyboard	Mouse	Sound	Number of PCs	Monitor	Keyboard	Mouse			Sound
DS-11110	VGA	PS/2	PS/2		2	VGA	PS/2	PS/2		Types of cables ●●	Switching also possible with mouse; with adapter cable ● can also be used with USB-PCs
DS-12110	VGA	PS/2	PS/2		4	VGA	PS/2	PS/2		Types of cable ●●	Switching also possible with mouse; with adapter cable ● can also be used with USB-PCs
DS-13110	VGA	PS/2	PS/2		6	VGA	PS/2	PS/2		Types of cable ●●	Switching also possible with mouse; with adapter cable ● can also be used with USB-PCs
DS-13111	VGA	PS/2	PS/2		8	VGA	PS/2	PS/2		Types of cable ●●	Switching also possible with mouse; with adapter cable ● can also be used with USB-PCs
DS-11310	VGA	PS/2	PS/2	●●	2	VGA	PS/2	PS/2	●●	Types of cable ●●● (2 sets of cables included)	Switching also possible with mouse; with adapter cable ● can also be used with USB-PCs
DS-12310	VGA	PS/2	PS/2	●●	4	VGA	PS/2	PS/2	●●	Types of cable ●●● (4 sets of cables included)	Switching also possible with mouse; with adapter cable ● can also be used with USB-PCs
DS-13112	VGA	PS/2	PS/2		8	VGA	PS/2	PS/2		Types of cable ●●	Switching also possible with mouse; with adapter cable ● can also be used with USB-PCs; OSD
DC-12402	VGA	USB	USB	●●	4	VGA	USB		●●	Types of cable ●●	Switching also possible with mouse
DS-11510	DVI	PS/2	PS/2		2	DVI	PS/2	PS/2		Types of cable ●	
DS-12510	DVI	PS/2	PS/2		4	DVI	PS/2	PS/2		Types of cable ●	

DIGITUS® USB-KVM Switch with Audio

AUDIO



Free your work place from unnecessary cables – save space and money

- Control PCs via USB keyboard, USB mouse and monitor
- Possible loudspeaker and microphone connection
- Simple installation – no additional software needed
- Select PC via keys, hot key or via mouse click (hot key function can be turned off)
- Excellent video quality – up to 1.920 x 1.440 pixel, 200MHz bandwidth
- Supports DDC, DDC2, DDC2B, DDC2AB
- Hot-Plugging, Plug and Play
- Supported operating systems: Windows/Linux/Mac OS

- **Optional cable:**
KVM: AK 82301 (1.8), AK 82302 (3.0m), AK 82303 (5.0m)
Audio: AK 82101 (1.8m), AK 82102 (3.0m), AK 82103 (5.0m)



Usable types of cables: Page: 46

Usable types of cables: Page: 47



Desktop KVM Switch, Basic-Line



DIGITUS® KVM Switch PS/2 with mouse click function

Make your work easier with only one console (monitor, keyboard and mouse) for all connected PCs – saves space and money

- Control PC via PS/2 keyboard, PS/2 mouse and monitor
- Simple installation – no software needed
- Select PC via keys, hot key or via mouse click (hot key function can be turned off)
- Excellent video quality – up to 1920x1440 pixel, 200MHz band width
- Supports DDC, DDC2, DDC2B, DDC2AB
- Hot-Plug and Play
- Keyboard and mouse emulation for error-free booting of computer
- Auto-scan (5, 10, 15, 20, 25, 30 sec. selectable)/Auto-skip function
- No external power supply needed (**optional power supply unit 9V DC, 300mA - Art.-No. DS-15100**)
- Supports Standard-PS/2 mouse, Microsoft IntelliMouse as well as full support for Microsoft IntelliPoint 5.0 mouse driver & Logitech Mouse-ware drivers

Usable types of cables:
Page: 46



258117 / DS-11110 KVM Switch PS/2 w. mouseclick, 2-Port

258131 / DS-12110 KVM Switch PS/2 w. mouseclick, 4-Port

258162 / DS-13110 KVM Switch PS/2 w. mouseclick, 6-Port

DIGITUS® KVM Switch PS/2 with audio and mouse click function

Make your work easier with only one console (monitor, keyboard and mouse) for all connected PCs – saves space and money

- Control PC via PS/2 keyboard, PS/2 mouse and monitor
- Select PC via keys, hot keys or via mouse click (hot key function can be switched off)
- Excellent video quality – up to 1920 x 1440 pixels, 200MHz band width
- Supports DDC, DDC2, DDC2B, DDC2AB
- Hot-Plug and Play
- Keyboard and mouse emulation for error-free computer booting
- Auto-scan (5, 10, 15, 20, 25, 30 sec. selectable)/Auto-skip function
- Supports Standard-PS/2 mouse, Microsoft IntelliMouse as well as full support for Microsoft IntelliPoint 5.0 mouse driver & Logitech Mouse-ware drivers
- Audio support for loudspeakers and microphone

Usable types of cables:
Page: 46

Usable types of cables:
Page: 46



AUDIO



258148 / DS-11310 KVM Switch PS/2 with Audio and mouse click, 2-Port

258155 / DS-12310 KVM Switch PS/2 with Audio and mouse click, 4-Port

DIGITUS® KVM Switch for DVI

Make your work easier with only one console (monitor, keyboard and mouse) for all connected PCs – saves space and money

- Control PCs via PS/2 keyboard, PS/2 mouse and DVI monitor
- Supports Standard-PS/2 mouse, Microsoft IntelliMouse as well as full support for Microsoft IntelliPoint 5.0 mouse driver & Logitech Mouse-ware drivers
- Excellent video quality – up to 1280x1024 pixels, DDC2
- Select PC via keys and hot key
- Hot-Plug and Play
- Keyboard and mouse emulation for error-free computer booting
- Auto-scan (5, 10, 15, 20, 25, 30 sec. selectable)/Auto-skip function
- Scope of delivery: 1x KVM-Switch; 1x user manual, 1x power supply unit DC 9V 300mA

• **Optional KVM cable:**
AK 809 (1.8m), AK 809 3M (3.0m), AK 809 5M (5.0m)



DVI



258193 / DS-11510 KVM Switch PS/2 for DVI, 2-Port

258209 / DS-12510 KVM Switch PS/2 for DVI, 4-Port

Desktop KVM Switch, Combo-Line

Product comparison table Desktop KVMs - Combo-Line

	Console/work place				Supported PC connections					Usable types of cables:	Specialties
	Monitor	Keyboard	Mouse	Sound	Number of PCs	Monitor	Keyboard	Mouse	Sound		
DC-11202-1	VGA	PS/2 USB	PS/2 USB		2	VGA	PS/2 and / or USB (combo plug)			Types of cables (2 x 1.8m set of cables included)	Keyboard and mouse connections freely selectable
DC-12202-1	VGA	PS/2 USB	PS/2 USB		4	VGA	PS/2 and / or USB (combo plug)			Types of cables (2 x 1.8m set of cables included)	Keyboard and mouse connections freely selectable
DS-13202	VGA	PS/2 USB	PS/2 USB		8	VGA	PS/2 and / or USB (combo plug)			Types of cables	Keyboard and mouse connections free selectable, firmware updatable
DS-14202	VGA	PS/2 USB	PS/2 USB		16	VGA	PS/2 and / or USB (combo plug)			Types of cables	Keyboard and mouse connections free selectable, firmware updatable
DC-11401-1	VGA	PS/2 USB	PS/2 USB	Speaker Microphone	2	VGA	PS/2 and / or USB (combo plug)	Speaker Microphone		Types of cables (2 x 1.8m set of cables included)	Keyboard and mouse connections free selectable; audio support, audio separately switchable
DC-12401-1	VGA	PS/2 USB	PS/2 USB	Speaker Microphone	4	VGA	PS/2 and / or USB (combo plug)	Speaker Microphone		Types of cables (2 x 1.8m set of cables included)	Keyboard and mouse connections free selectable; audio support, audio separately switchable
DC-11201-1	VGA	PS/2 USB	PS/2 USB		2	VGA	USB			Types of cables (2 x 1.8m set of cables included)	Keyboard and mouse connection free selectable; incl. 3-Port USB 2.0 Hub
DC-12201-1	VGA	PS/2 USB	PS/2 USB		4	VGA	USB			Types of cables (2 x 1.8m set of cables included)	Keyboard and mouse connection free selectable; incl. 3-Port USB 2.0 Hub
DS-12423	VGA	PS/2 USB	PS/2 USB	Speaker Microphone	4	VGA	USB	Speaker Microphone		Types of cables (2 x 1.8m set of cables included)	Keyboard and mouse connection on KVM free selectable; audio support, audio separately switchable; incl. 2-Port USB 2.0 Hub
DS-12443	2x VGA	PS/2 USB	PS/2 USB	Speaker Microphone	4	2x VGA	USB	Speaker Microphone		Types of cables (4 x 1.8m set of cables included)	Keyboard and mouse connection on KVM free selectable; audio support, audio separately switchable; incl. 2-Port USB 2.0 Hub, supports 2 monitors
DC-11801-1	DVI	PS/2 USB	PS/2 USB	Speaker Microphone	3	DVI	USB	Speaker Microphone		Types of cables (2 x 1.8m set of cables included)	Keyboard and mouse connection on KVM free selectable; audio support, audio separately switchable
DS-12820	DVI	PS/2 USB	PS/2 USB	Speaker Microphone	4	DVI	USB	Speaker Microphone		Types of cables (2 x 1.8m set of cables included)	Keyboard and mouse connection on KVM free selectable; audio support, audio separately switchable; incl. 2-Port USB 2.0 Hub
DS-12820	DVI	PS/2 USB	PS/2 USB	Speaker Microphone	4	DVI	USB	Speaker Microphone		Types of cables (2 x 1.8m set of cables included)	Keyboard and mouse connection on KVM free selectable; audio support, audio separately switchable; incl. 2-Port USB 2.0 Hub

DIGITUS® Audio-USB-PS/2 Combo-KVM Switch

AUDIO



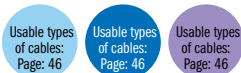
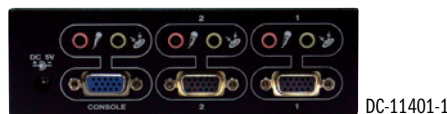
Free your work place from unnecessary cables – saves space and money

Controls several PCs via PS/2 or USB Keyboard, PS/2 or USB mouse and monitor, incl. audio support

- Simple installation – no additional software needed
- Select PC via keys or hot key
- Excellent video quality – up to 2.048 x 1.536 pixels at 85Hz
- Supports DDC, DDC2 monitors
- Hot-Plug and Play
- Keyboard and mouse emulation for error-free computer booting
- Auto-scan (5 to 250 sec., selectable)
- No external power supply needed, supply via PS/2- or USB interface (optional power supply unit 5V; 2.0A - Art.-No. DN-R-PS-1)
- Fully compatible with USB 1.1 and 2.0 specifications
- Delivery includes two sets of cables, length: 1.8m
- Suitable for Windows/Mac/Linux/Sun Micro Systems

Optional cable:

- KVM:** AK 82001 (1.8m), AK 82002 (3.0m), AK 82003 (5.0m)
 AK 82004 (PS/2, 10m), AK 82304 (USB, 10m)
Audio: AK 82101 (1.8m), AK 82102 (3.0m), AK 82103 (5.0m)
 AK 82201 (1.8m), AK 82202 (3.0m), AK 82203 (5.0m)



222651 / DC-11401-1 Audio-USB-PS/2 Combo-KVM Switch, 2-Port

222668 / DC-12401-1 Audio-USB-PS/2 Combo-KVM Switch, 4-Port

Desktop KVM Switch, Combo-Line



DIGITUS® USB 2.0-KVM Switch, 2-Port



Up to 2 PCs via keyboard, mouse and monitor

- Universal use with USB and PS/2 devices
- Integrated 3-Port USB 2.0-Hub
- Simple installation - no additional software needed
- Select PC via keys, hot key or OSD utility
- Excellent video quality - up to 1.920 x 1.440 pixel
- Supports DDC, DDC2
- Hot-Plug and Play
- Keyboard and mouse emulation for error-free computer booting
- Auto-scan function (5 to 250 sec., selectable)
- Delivery includes two sets of cables à 1.8m length
- Suitable for Windows/Mac/Linux/Sun Micro Systems
-
- **Optional KVM cable:** AK 82301 (1.8m), AK 82302 (3.0m), AK 82303 (5.0m)



222583 / DC-11201-1 USB 2.0-KVM Switch, 2-Port

DIGITUS® USB-PS/2 Combo-KVM Switch



Control several PCs via PS/2 or USB keyboard, PS/2 or USB mouse and a monitor

- Simple Installation - no additional software needed
- Select PC via keys or hot key
- Excellent video quality - up to 2.048 x 1.536 pixels at 85Hz
- Supports DDC, DDC2 monitors
- Hot-Plug and Play
- Keyboard and mouse emulation for error-free computer booting
- Auto-scan function (5 to 250 sec., selectable)
- No external power supply needed, supply via PS/2- or USB interface
- (optional power supply unit 5V; 2.0A - Art.-No. DN-R-PS-1)
- Fully compatible with USB 1.1- and USB 2.0 specifications
- Delivery includes two sets of cables à 1.8m length
- Suitable for Windows/Mac/Linux/Sun Micro Systems

Usable types of cables: Page: 46

Usable types of cables: Page: 46



- **Optional KVM cable:** AK 82001 (1.8m), AK 82002 (3.0m), AK 82003 (5.0m), AK 82004 (PS/2 - 10.0m), AK 82309 (USB - 10.0m)

222637 / DC-11202-1 USB-PS/2 Combo-KVM Switch, 2-Port

222644 / DC-12202-1 USB-PS/2 Combo-KVM Switch, 4-Port

DIGITUS® USB 2.0-KVM Switch, 4-Port



Control up to 4 PCs via keyboard, mouse and monitor

- Universal use with USB and PS/2 devices
- Integrated 3-Port USB 2.0 Hub
- Simple installation - no software needed
- Select PC via keys, hot key or OSD utility
- Excellent video quality - up to 1.920 x 1.440 pixel, 200MHz bandwidth
- Supports DDC, DDC2
- Hot-Plug and Play
- Keyboard and mouse emulation for error-free computer booting
- Auto-scan function (5 to 250 sec. selectable)
- External power supply DC 5V 2A
- Delivery includes two sets of cables à 1.8m length
- Suitable for Windows/Mac/Linux/Sun Micro Systems

- **Optional KVM cable:** AK 82301 (1.8m), AK 82302 (3.0m), AK 82303 (5.0m)



222590 / DC-12201-1 USB 2.0-KVM Switch, 4-Port

DIGITUS® Audio-Combo-KVM Switch for DVI, 3-Port



Control up to 3 PCs, a PS/2 or a USB keyboard, a PS/2 or USB mouse and a DVI monitor, incl. audio support

- Simple installation - no additional software needed
- Select PC via keys or hot key
- Excellent video quality - up to 1.600 x 1.200 pixel at 60Hz
- Supports DDC, DDC2, DVI, UXGA
- Hot-Plug and Play
- Keyboard and mouse emulation for error-free computer booting
- Auto-scan (5 to 250 sec., selectable)
- No external power supply needed, supply via PS/2- or USB interface
- (optional power supply unit 5V; 2.0A - Art.-No. DN-R-PS-1)
- Fully compatible with USB 1.1 and 2.0 specifications
- Delivery includes two sets of cables, length: 1.8m
- Suitable for Windows/Mac/Linux/Sun Micro Systems

Usable types of cables: Page: 47



- **Optional USB/Audio cable:** AK 82201 (1.8m), AK 82202 (3.0m), AK 82203 (5.0m)
- **Optional DVI cable:** DK-310105-018-D (1.8m), DK-310105-030-D (3m), DK-310105-050-D (5m)

222620 / DC-11801-1 Audio-Combo-KVM Switch for DVI, 3-Port

Desktop KVM Switch, Combo-Line

DIGITUS® Audio-USB-KVM Switch, with integrated USB 2.0 Hub

USB 2.0 Hub
+ AUDIO



Make your work easier with only one console (monitor, keyboard and mouse) for all connected computers – saves space and money

This high-quality KVM switch enables the simultaneous but also independent control of up to 2 PCs, the audio playback and 2 USB end devices such as scanner, printer, camera and similar.

- Controls 2 computers from one single console (mouse and keyboard) via USB
- Integrated USB Hub - 2 computers can use 2 USB downstream ports
- USB 2.0 compliant
- Separate switching of the USB Hub or switching in combination with the PCs (USB HUB Auto-Switch mode)
- Offers separate switching of audio channel
- Supports VGA display
- Excellent video quality – resolutions up to WUXGA 1.920 x 1.200 at 60Hz
- Select PC via keys at front panel and/or hot key on USB keyboard
- Auto-Scan-Function
- LED Indicators
- Plug and Play
- Suitable Windows/Mac/Linux/Sun Micro Systems

- **Optional KVM cable:** AK 82301 (1.8m), AK 82302 (3.0m), AK 82303 (5.0m)
- **Optional audio cable:** AK 82101 (1.8m), AK 82102 (3.0m), AK 82103 (5.0m)



Usable types of cables:
Page: 46

Usable types of cables:
Page: 47



307235 / DS-12423 USB 2.0-Audio-KVM Switch, 2-Port

307242 / DS-12443 USB 2.0-Audio-KVM Switch, 4-Port

DIGITUS® DVI-Audio-USB-KVM Switch, with integrated USB 2.0 Hub

DVI
+ USB 2.0 Hub
+ AUDIO



Connect peripheral devices with only one console and save space and money

This high-quality KVM switch enables the simultaneous but also independent control of up to 2 PCs with DVI connection, audio playback and 2 USB end devices such as scanners, printers, cameras or similar.

- Controls two computers with DVI video from one single console (mouse and keyboard) via USB
- Integrated USB-Hub - 2 computers may use 2 USB downstream ports
- USB 2.0 compliant
- Separate switching of the USB Hub or switching in combination with the PCs (USB HUB Auto-Switch mode)
- Offers separate switching of audio channel
- Supports DVI display devices
- Excellent video quality – resolutions up to WUXGA 1.920 x 1.200 at 60Hz
- Select PC via keys at front panel and/or hot key on USB keyboard
- Auto-Scan-Function
- LED Indicators
- Plug and Play
- Suitable Windows/Mac/Linux/Sun Micro Systems

- **Optional USB/Audio cable:** AK 82201 (1.8m), AK 82202 (3.0m), AK 82203 (5.0m)
- **Optional DVI cable:** DK-310105-018-D (1.8m), DK-310105-030-D (3m), DK-310105-050-D (5m)



Usable types of cables:
Page: 47



307259 / DS-12820 USB 2.0-DVI-Audio-KVM Switch, 2-Port

307266 / DS-12840 USB 2.0-DVI-Audio-KVM Switch, 4-Port

Desktop KVM Switch, Combo-Line



DIGITUS® Dual-VGA-Combo-KVM Switch, 4-Port, with audio support and USB-Hub

USB 2.0 Hub
+ AUDIO
+ 2 Bildschirme



The perfect KVM for multimedia and graphics work stations with 2 monitors

This KVM enables the combination of up to 4 computers with dual screen connection for VGA monitors with a set of keyboard, mouse, microphone and a set of loudspeakers. Furthermore, any USB devices that are connected to the integrated USB hub can be used commonly.

- Control up to 4 PCs with dual VGA connection via a console with two monitors
- Supports PS/2 and also USB keyboards and mice
- Simple installation - no software needed
- Integrated USB 2.0 Hub, independently switchable
- Hot-Plug and Play
- Select PC via hot key or push button
- Excellent video quality - up to 2.048 x 1.536 pixel at 85Hz
- Supports DDC and DDC2 monitors
- Audio IN/OUT - support, separately switchable
- Keyboard and mouse emulation for error-free computer booting
- Auto-scan function (5 to 60 sec. selectable)
- Supports all Windows-/Linux-/Mac operating systems with USB support

• Optional KVM cable: AK 82301 (1.8m), AK 82302 (3.0m), AK 82303 (5.0m)

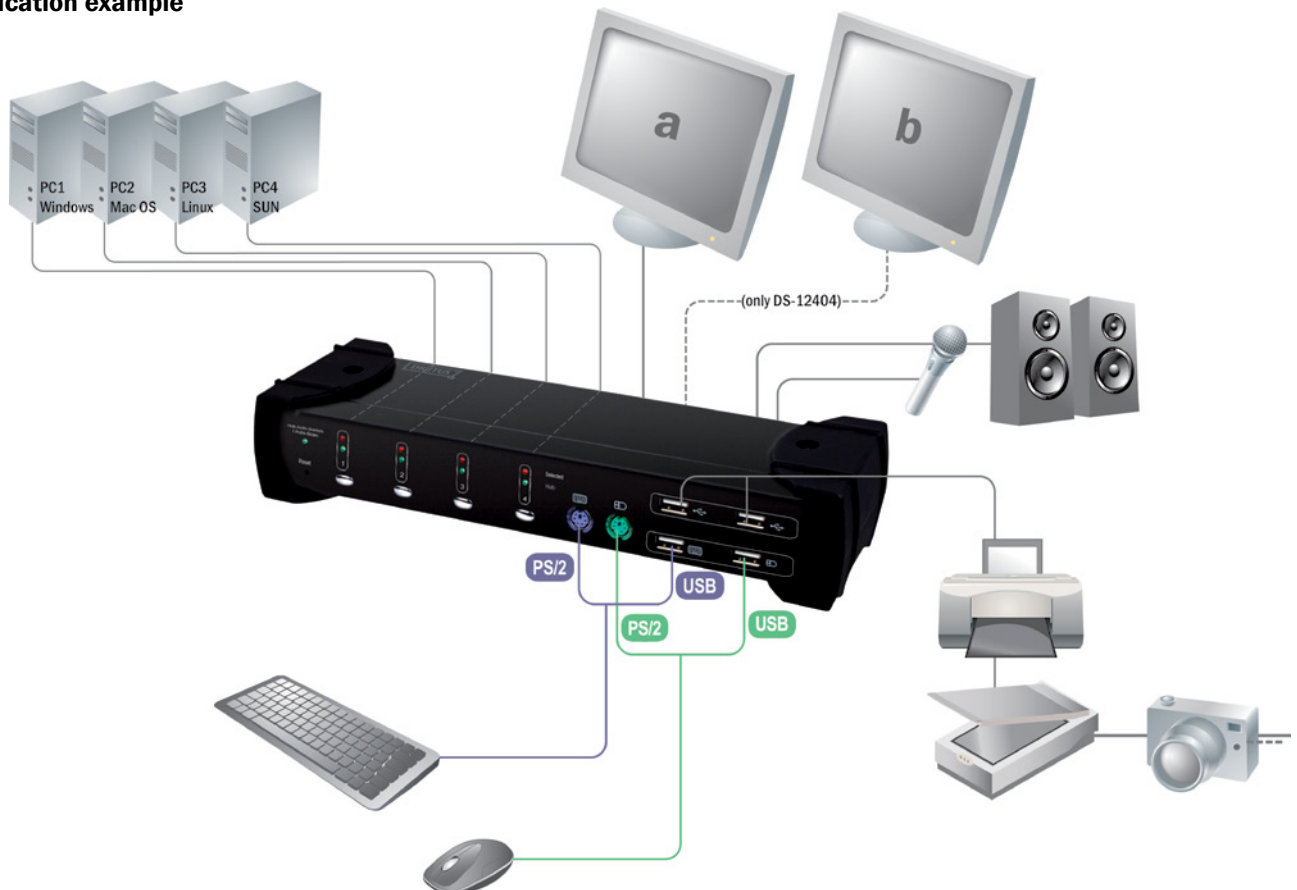


Usable types of cables:
Page: 47



275824 / DS-12404 4-Port Dual-VGA-Combo-KVM Switch, 4-Port, Audio, USB Hub

KVM application example

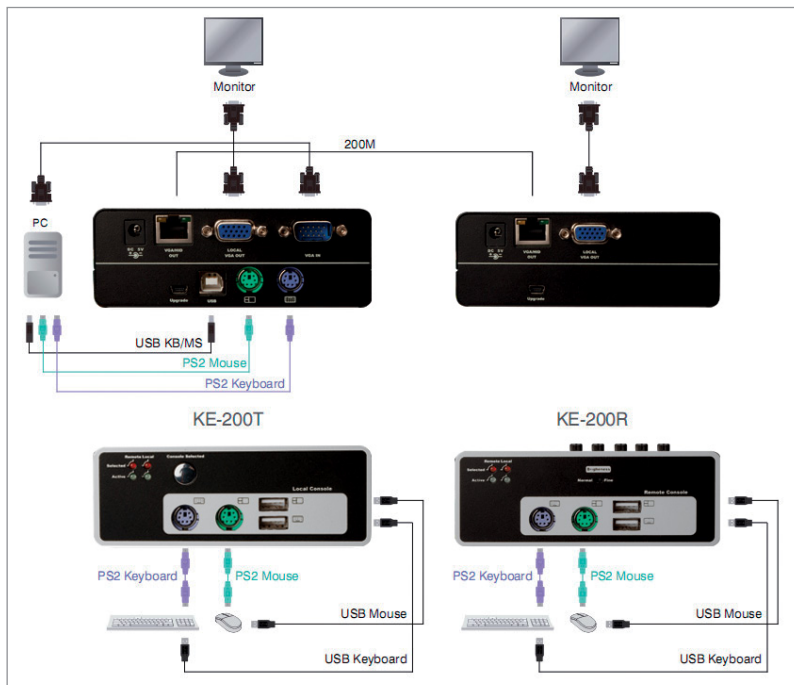


Combo KVM Extender with USB and PS/2-KVM accessories

DIGITUS® Combo-KVM Extender with USB and PS/2

This Combo KVM-Extender allows the extension of VGA Video, USB and PS/2 signals up to a range of 200 meters to the source of the signal. The integrated amplifier for video and keyboard/mouse signals may enable a very high video playback quality.

- Extends keyboard, video and mouse signals via CAT-5 cable.
- Dual console operation possible - control ability via local and remote unit.
- Switch ability on the local side to select the active console
- Select abilities of console control: local/remote/local and remote
- Supports connection of USB and/or PS/2 keyboards/mice on local and remote console
- Supports connections to computer via USB and/or PS/2 interface on local device
- Supports high video resolutions up to 1.920 x 1.080 pixel up to max.75m; 1.280 x 1.024 pixel to 200m, at 60Hz respectively
- DDC2B support for remote monitor
- Possible settings for image sharpness, brightness and color correction at the remote unit for perfect video quality
- No software or driver installations needed
- Supports access to BIOS level
- LEDs on both units to identify the active console and the connection status
- Firmware upgrade possible
- Dimensions local/remote: 125 x 78 x 46mm
- Suitable for Windows/Mac/Linux/Sun Micro Systems
- Scope of delivery: 1 x Sender unit; 1 x receiver unit; 1 x user manual; 1 x VGA extension cord, 1 x USB connection cable; 2 x power supply unit DC 5V 2A



Local



Remote



DIGITUS® KVM Extender via CAT 5

Perfect to place console in certain distance from KVM switch

The range of VGA, PS/2 keyboard, PS/2 mouse signals can be up to 300m using this KVM extender and a CAT-5 cable.

- Max. resolution 1.280 x 1.024 pixel
- Supports Auto/manual video quality
- Auto adjusting video signals
- Supports 3 hot keys to combine other equipment
- Two kinds of control: Local + Sharing
- Extra console port at local side
- Automatic console selection



223825 / DC-51101 KVM Extender 300m, local and remote

232711 / DC-51102 KVM Extender 180m, local and remote

DIGITUS® RS232-Extender via CAT 5, 1.000m

Ideal to connect remote installed devices and with RS232 interface

Compatible with all RS232 protocols

- Full-Duplex communication
- Sends RS232 data with 230kbps up to 1.000m
- Pure hardware solution – real time data transfer, no software conflicts
- Data transfer between PCs and other devices
- Extension via CAT 5 cable
- Connections on local and remote side: 1x DB-9 socket; 1x RJ45 socket; power supply unit connection

Optional cable:

- DK-1511-010 (1m), DK-1511-020 (2m), DK-1511-025 (2.5m), DK-1511-030 (3m)
- DK-1521-050 (5m), DK-1521-070 (7m), DK-1521-100 (10m), DK-1521-200 (20m)
- DK-1531-100 (10m), DK-1531-150 (15m), DK-1531-200 (20m), DK-1531-300 (30m)



223887 / DC-52101 RS232 Extender

DIGITUS® Cat 5-Audio-Extender

Uses existing Ethernet cable to transfer audio and microphone signals

With the DIGITUS® CAT 5 audio extender audio stereo and microphone signals may be transferred to a distance of 300 meters only by using the audio extender and a CAT 5 cable.

- Extension of audio signals up to 300m
- Audio-Out supports multimedia loudspeakers, headsets and earphones
- The microphone input works with condenser microphones and dynamic microphones
- Integrated microphone amplifier
- Adjustable microphone amplification
- Scope of delivery: 1x Audio Extender local unit, 1x Audio Extender remote unit, 1x manual, 1x power adapter DC 9V/300mA, 1x connection cable to audio source



254768 / DC-56100 CAT 5-Audio-Extender, 300m

KVM Cable Sets

DIGITUS® Octopus KVM cable set



Cable



DIGITUS® Original accessories

Octopus cable set for KVM switch with PS/2 connections and VGA socket contacts.

- 2x MiniDIN6 (PS/2), plug <-> 2x MiniDIN6 (PS/2), plug
- 1x HD DSUB, 15-pin, plug <-> 1x HD DSUB, 15-pin, plug
- Plugs color-coded:
Keyboard (purple), Mouse (green) and Monitor (blue)
- Suitable for DIGITUS® Consoles DC-72101-1 & DC-72101-2
- Color: black



274797 / DS-19131 KVM cable PS/2, 1.8M

274803 / DS-19132 KVM cable, 3.0m

274827 / DS-19133 KVM cable, 5.0m

274834 / DS-19134 KVM cable, 7.0m

274841 / DS-19135 KVM cable, 10.0m

DIGITUS® Octopus KVM cable set



Cable



DIGITUS® Original accessories

Octopus cable set for KVM switch with PS/2 connections and VGA socket contacts.

- 2x MiniDIN6 (PS/2), plug <-> 2x MiniDIN6 (PS/2), plug
- 1x HD DSUB, 15-pin, plug <-> 1x HD DSUB, 15-pin, socket
- Plugs color-coded:
Keyboard (purple), Mouse (green) and Monitor (blue)
- Color: black



274612 / DS-19121 KVM cable, 1.8m

274711 / DS-19122 KVM cable, 3.0m

274742 / DS-19123 KVM cable, 5.0m

274773 / DS-19124 KVM cable, 7.0m

274780 / DS-19125 KVM cable, 10.0m

DIGITUS® Octopus KVM cable set



Cable



DIGITUS® Original accessories

Octopus cable set for KVM switch with PS/2 connections and DVI socket contacts.

- 2x MiniDIN6 (PS/2), plug <-> 2x MiniDIN6 (PS/2), plug
- 1x DVI 24+1 Pin, plug <-> 1x DVI 24+1 Pin, plug
- Plugs color-coded:
Keyboard (purple), Mouse (green) and DVI Monitor (black)
- Suitable for DIGITUS® DS-11510, DS-12510
- Color: black

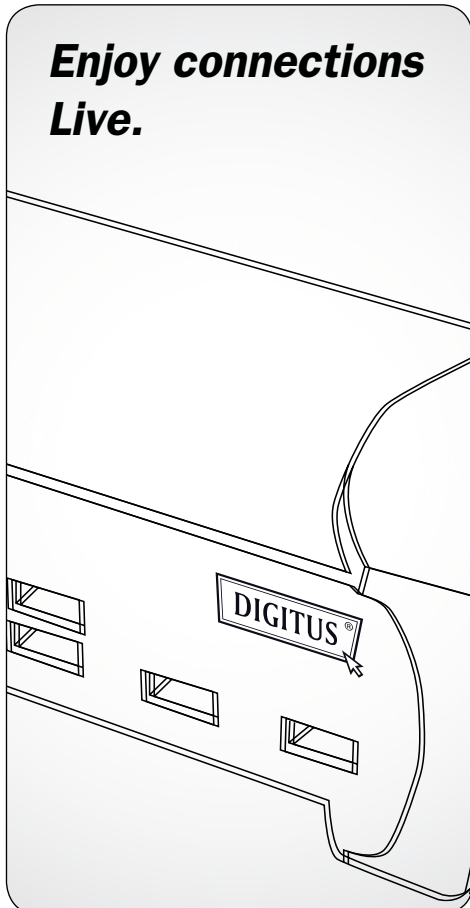


274858 / DS-19501 DVI KVM cable set, PS/2 - 1.8m

274865 / DS-19502 DVI KVM cable set, PS/2 - 3.0m

274872 / DS-19503 DVI KVM cable set, PS/2 - 5.0m

**Enjoy connections
Live.**



DIGITUS® KVM cable for KVM-Switch (Combo-Series)



Cable



DIGITUS® Original accessories

- Connections PC side: 1x HD DSUB, 15-pin, plug
- Connections KVM side: 2x MiniDIN, 6-pin, plug; 1x USB A, plug; 1x HD DSUB, 15-pin, plug
- Color: black



201151 / AK 82001 KVM cable, 1.8m

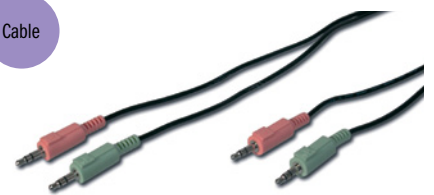
201168 / AK 82002 KVM cable, 3.0m

201175 / AK 82003 KVM cable, 5.0m

DIGITUS® KVM cable for KVM-Switch with Audio (Combo-Series)



Cable



DIGITUS® Original accessories

- Connections PC side: 2x 3.5mm Stereo, plug
- Connections KVM side: 2x 3.5mm Stereo, plug
- Color: black



201182 / AK 82101 1.8m

201199 / AK 82102 3.0m

201205 / AK 82103 5.0m

DIGITUS® KVM cable for USB-KVM Switch (Combo-Series)



Cable



DIGITUS® Original accessories

- Connections PC side: 1x USB A, plug; 1x HD DSUB, 15-pin, plug
- Connections KVM side: 1x USB B, plug; 1x HD DSUB, 15-pin, socket
- Color: black



201243 / AK 82301	1.8m
201250 / AK 82302	3.0m
201267 / AK 82303	5.0m

DIGITUS® KVM Installation angle



DIGITUS® Original accessories

1 set installation angles consisting of 2 brackets and respective fastening screws



206125 / DC-15001	KVM Installation angle for 4-Port-Combo-KVMs
206132 / DC-15002	Assembly frame, for 8-/16-Port KVMs

DIGITUS® KVM cable for USB-KVM Switch with Audio (Combo-Series)



Cable



DIGITUS® Original accessories

- Connections PC side: 1x USB A, plug; 2x 3.5mm, plug
- Connections KVM side: 1x USB B, plug; 2x 3.5mm, plug
- Color: black



201212 / AK 82201	1.8m
201229 / AK 82202	3.0m
201236 / AK 82203	5.0m

DIGITUS® Device power supply unit



DIGITUS® Original accessories

- DS-15100: Device power supply unit for DIGITUS® KVMs (BASIC Line), DC 9V 1A, (Level V)
- DN-R-PS-1: Device power supply unit for DIGITUS® KVMs (COMBO Line), DC 5V 2A, (Level IV)



280736 / DS-15100	Device power supply unit, 9V 1A, for BASIC-Line
223818 / DN-R-PS-1	Device power supply unit, 5V 2A, for COMBO-Line

Video Solutions

DIGITUS® HDMI Splitter

Optimal to connect several TVs and monitors to one HDMI source

Simultaneous playback of a HDMI video signal on several output devices

- Simple handling: Installation in seconds, no manual settings
- Scalable: expanded distribution via cascading of several HDMI splitter
- Highest supported video resolution 1.080p
- Supports the 3D functions in all formats, 1.080p@23.98/24Hz, 720p@59.94/60Hz/50Hz
- Bandwidth 225MHz/2.25GBps per channel (6.75Gbps all channels)
- Color depth 12 Bit per channel (36 Bit all channels)
- HDCP support
- Supports uncompressed audio formats, e.g. LPCM
- Supports compressed audio formats, e.g. DTS Digital, Dolby Digital (incl. DTS-HD and Dolby True HD)

Optional cable:

- AK-330102-010-S (1m), AK-330102-020-S (2m), AK-330102-030-S (3m)
- AK-330103-020-S (2m), AK-330103-030-S (3m), AK-330103-050-S (5m)
- AK-330105-100-S (10m), AK-330105-150-S (15m), AK-330105-200-S (20m)



271536 / DS-41300 HDMI Splitter, 2-Port

271543 / DS-42300 HDMI Splitter, 4-Port

DIGITUS® HDMI Switch

Comfortable switching between several HDMI sources without re-plugging and cables tangling

Selects a HDMI video source from several other sources to display those on an output device

- Several switch methods: intelligent automatic selection, IR remote control, touch sensors
- IR remote control included
- Highest supported video resolution 1.080p
- Bandwidth 250MHz/2.5GBps per channel (7.5Gbps all channels)
- Color depth 12 Bit per channel (36 Bit all channels)
- Supports the 3D functions in all formats, 1.080p@23.98/24Hz, 720p@59.94/60Hz/50Hz
- HDCP support
- Supports uncompressed audio formats, e.g. LPCM
- Supports compressed audio formats, e.g. DTS Digital, Dolby Digital (incl. DTS-HD and Dolby True HD)

Optional cable:

- AK-330102-010-S (1m), AK-330102-020-S (2m), AK-330102-030-S (3m)
- AK-330103-020-S (2m), AK-330103-030-S (3m), AK-330103-050-S (5m)
- AK-330105-100-S (10m), AK-330105-150-S (15m), AK-330105-200-S (20m)



271550 / DS-44300 HDMI Switch, 3-Port

271567 / DS-45300 HDMI Switch, 5-Port

DIGITUS® HDMI-Video-Switch with integrated PC connection

The reliable HDMI solution for your entertainment and home cinema system with complete PC integration!

- Ideally suited for any well-equipped home cinema and entertainment system, e.g. with Blue-ray player, media player, game console, receiver, etc.
- The in the switch integrated Plug & Play USB 2.0 graphics adapter shows the image of the computer at the closed TV or screen and thus makes the direct playback of videos played on the PC possible (up to HD resolution)
- 4 HDMI inputs, 1 USB 2.0 input and 1 HDMI output
- Offers possible connections for max. 4 devices with HDMI output, and also one to the PC via the USB 2.0 interface to a HDMI capable TV, screen or beamer
- Enables via USB 2.0 connection simple and seamless integration of a PC or notebook into the home cinema
- The desired signal source can be switched comfortably via the included remote control or directly at the switch on the TV or screen
- Full HD Video and Audio transfer from PC to HDTV
- HDMI highest resolution of 1.920 x 1.080 pixels (Full HD)
- Supports 3D function in all formats, 1.080p@23.98/24Hz, 720p@59.94/60Hz/50Hz



- USB 2.0 resolution of 1.920 x 1.080, 1.600 x 1.200, 1.65Gbps/165MHz/24 Bits bandwidth
- Supported USB-Monitor-Modes: primary, expanded, mirrored, twisted playback
- Suitable for Windows 7/Vista/XP/Mac OS X



306085 / DS-45310 HDMI-Video-Switch with integrated PC connection

310075 / DS-45320 4 x 1-Port HDMI-Switch

DIGITUS® HDMI-Matrix-Switch, 4 x 2-Port

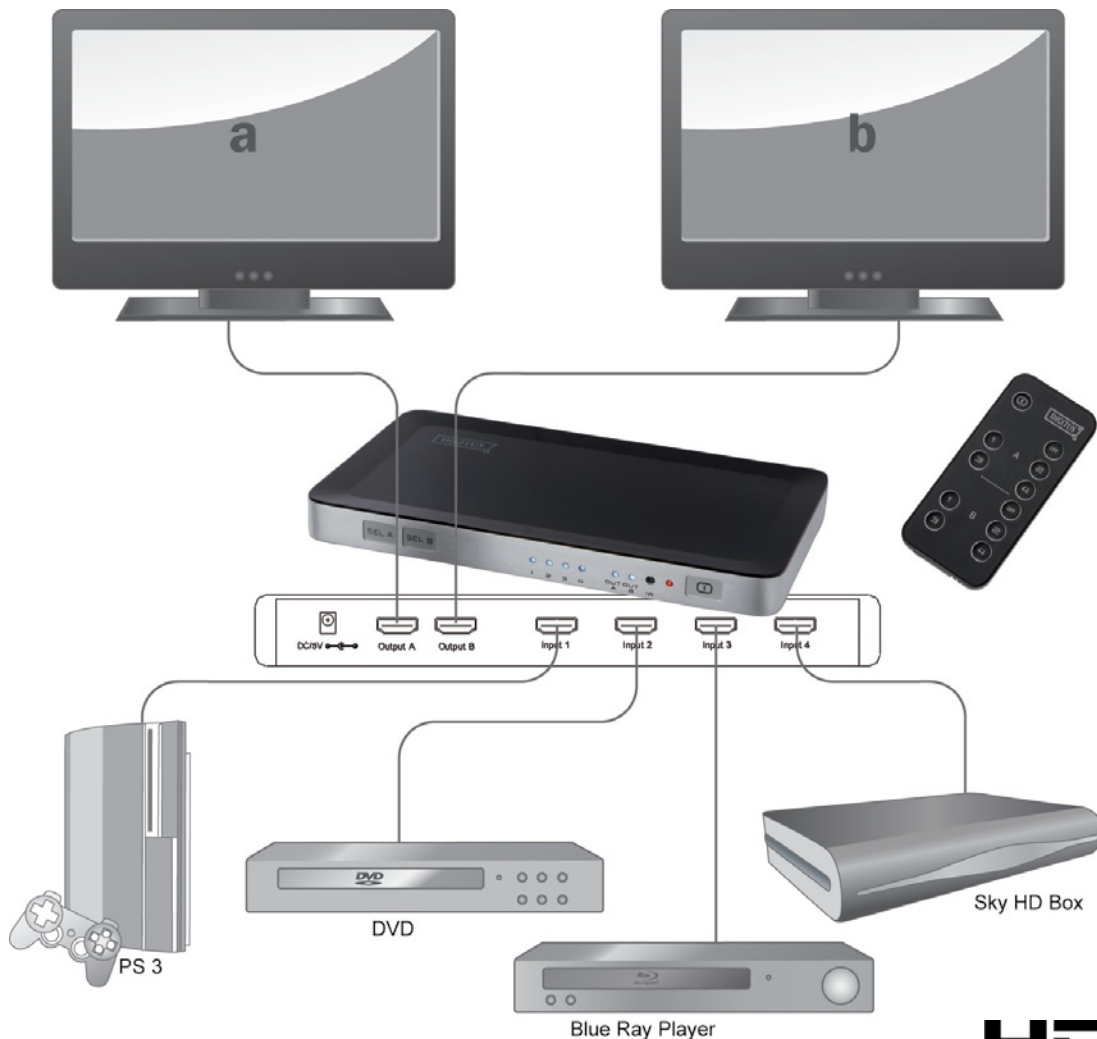
The comfortable and complete HDMI distribution solution for home entertainment

This HDMI matrix switch combines the advantages of a simple HDMI switch and a HDMI splitter. The splitter transfers one or two HDMI video signals from four selectable input signals to respectively on or two selectable HDMI displays. This offers highest flexibility for all connected systems. All inputs are suited for high definition video sources such as HD - DVD, receiver, set-top boxes, game consoles, etc.

- Easy switching between four arbitrary HDMI sources
- Arbitrary distribution from one or two from four possible HDMI input signals on two HDMI displays
- Several switch methods: intelligent automatic selection, IR remote control, touch sensors
- Highest supported video resolution 1080p
- Compatible to High-Speed-HDMI (1.3b)
- Bandwidth 225MHz/2.25Gbps per channel (6.75Gbps all channels)
- Color depth 12 Bit per channel (36 Bit all channels)
- HDCP support
- Supports uncompressed audio formats, e.g. LPCM
- Supports compressed audio formats, e.g. DTS Digital, Dolby Digital (incl. DTS-HD and Dolby True HD)
- Dimensions: 128 x 220 x 25mm; 350g

• **Optional cable:**

- AK-330102-010-S (1m), AK-330102-020-S (2m), AK-330102-030-S (3m)
- AK-330103-020-S (2m), AK-330103-030-S (3m), AK-330103-050-S (5m)
- AK-330105-100-S (10m), AK-330105-150-S (15m), AK-330105-200-S (20m)



Video Solutions

DIGITUS® HDMI-Pocket-Video-Splitter, 2-Port

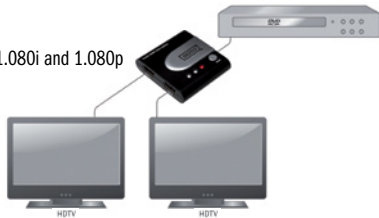


One of the smallest HDMI-Video-Splitter! Renders a video signal simultaneously to two different HDTV screens!

With the DIGITUS® Pocket-HDMI-Splitter 2 HDMI-Monitors or projectors may be fed simultaneously from one HDMI source.

- 1 input, 2 outputs
- Simple installation and use
- Suitable for distances up to 15m
- Compatible with HDTV 480i, 480p, 720i, 720p, 1.080i and 1.080p
- Supports VGA, SVGA, XGA and UXGA
- HDMI-High-Speed (1.3b) and HDCP compatible
- Pixel frequency: 25-225MHz

- **Optional cable:**
AK-330102-010-S (1m)
AK-330103-050-S (5m)
AK-330105-100-S (10m)



276586 / DS-41302 Pocket-HDMI-Splitter, 2-Port

DIGITUS® HDMI-Repeater



With the help of the HDMI-Repeater longer distances between a playback device and a monitor can be bridged comfortably. The HDMI signal is amplified to a point so that no signal losses will occur at the image resolution.

- HDMI-Repeater for up to 35m (DS-55901) or 50m (DS-55900)
- Video resolution up to 1.080p
- HDMI High-Speed compatible
- HDCP transmission
- Video bandwidth:

- **DS-55900:**
1.65Gbps/165MHz per channel (4.95Gbps total)
- **DS-55901:**
2.25Gbps/225MHz per channel (6.75Gbps total)



271598 / DS-55900 HDMI-Repeater

269014 / DS-55901 Professional HDMI-Repeater

DIGITUS® Automatic HDMI-Switch, 2-Port



Automatic switching between 2 HDMI inputs

With the automatic DIGITUS® HDMI-Switch 2 HDMI sources may share 1 HDMI display. Switching is done automatically to the last switched signal, or manually.

- 2 inputs, 1 output
- Simple installation and use - automatic switch
- Plug and Play - no software needed
- HDCP conform
- Compatible with HDTV 480i, 480p, 720i, 720p, 1.080i and 1.080p
- Supports VGA, SVGA, XGA and UXGA
- HDMI High-Speed compatible
- Support for 8 Bit and 12 Bit color depth per channel

- **Optional cable:**
AK-330102-010-S (1m)
AK-330103-050-S (5m)
AK-330105-100-S (10m)



271581 / DS-44302 HDMI automatic Switch, 2-Port

DIGITUS® HDMI-Video-Extender



Offers simple and fast distribution for HDMI video signals – place your screens wherever you want to

Extends the maximum length for HDMI cables to up to 50m whereas only a simple network cable is being used between a sender and a receiver unit

- CAT 5-HDMI-Extender consisting of one sender and one receiver unit
- Video resolution up to 1.080p
- For extensions up to 50 meters
- Corresponds with IEEE-568B Standard
- Bandwidth 165MHz 1.65Gbps per channel (4.95Gbps via all channels)
- Color depth 8bit per channel (24bit via all channels)
- HDCP transmission
- Automatic adjusting of feedback, equalisation and amplification
- Supports uncompressed audio signals like LPCM

- **Optional cable:**
DK-1511-030 (3m), DK-1521-050 (5m),
DK-1521-070 (7m), DK-1531-100 (10m)



277774 / DS-55100 HDMI-Video-Extender, CAT 5/6

DIGITUS® Multimedia-VGA/Audio to HDMI Converter

Renders a VGA video signal via a HDMI screen such as a HDTV device.

Converts a VGA input signal to HDMI and allows PC users to enjoy their screen on the HDMI TV. Conversion is done together with the stereo audio signal. This offers solutions for digital entertainment centres, HDTV, STB, DVD, projectors and many more.

- Converts VGA and audio signals of a PC to a standard-conform HDMI signal.
- Suited for video resolutions up to 1.280 x 1.024 pixel
- Bandwidth 165MHz/1.65GBps per channel (6.75Gbps all channels)
- Color depth 8 Bit per channel (24 Bit all channels)
- HDCP support
- Dimensions: 88 x 68 x 25.5mm; 68g



268994 / DS-40130 Multimedia VGA/Audio to HDMI Converter

DIGITUS® Multimedia-HDMI to VGA/Audio Converter

Shows a HDMI video signal on a VGA screen and offers separate audio playback

Converts HDMI input signals to VGA and an audio signal respectively and allows users to use modern playback devices also with older analogue VGA screens devices. Conversion is done together with the stereo audio signal. This offers solutions for digital entertainment centres, HDTV, STB, DVD, projectors and many more.

- Converts a HDMI signal to a VGA and an audio signal (2 channel LPCM)
- Video resolutions up to UXGA (1.600 x 1.200 Pixel) and 1080p
- Bandwidth 165MHz/1.65GBps per channel (6.75Gbps all channels)
- HDCP 1.2 compatible
- Dimensions: 88 x 68 x 25.5mm; 68g



283881 / DS-40310 Multimedia-HDMI to VGA/Audio Converter

DIGITUS® Multimedia-DVI/Audio to HDMI Converter

Combines a digital video and analog audio signal to one single HDMI signal

Converts a DVI and an analog audio input signal to HDMI and allows users a seamless integration of their video playback on a modern home theatre through ideal image playback on a HDMI-HDTV. Conversion is done together with the stereo audio signal. This offers solutions for digital entertainment centres, HDTV, STB, DVD, projectors and many more.

- Converts to one HDMI signal from a separate DVI and audio signal.
- Video resolution up to 1.080p
- Bandwidth 225MHz 2.25Gbps per channel (6.75Gbps via all channels)
- Color depth 12bit per channel (36bit all channel)
- HDCP 1.2 compatible
- Dimensions: 88 x 68 x 25.5mm; 68g
- HDMI Standard: High-Speed-HDMI
- High-Speed HDMI: 1.920 x 1.080 Pixel, 60Hz



287346 / DS-40230 Multimedia DVI/Audio to HDMI Converter

Video Solutions

DIGITUS® Video/Audio-Splitter

Supports a max. resolution from up to 1.920 x 1.200 pixel

With a DVI-Video/Audio Splitter a signal of a DVI source can be rendered on several monitors and several loudspeakers simultaneously.

- DVI Video/Audio Splitter, 2-Port
- Supports a max. resolution of 1.920 x 1.200 pixel and Full-HD 1.080p
- Automatic Power-Save if video signal is lost
- High-definition picture
- LED display for signal activity
- Supports EDID, HDCP and is BlueRay ready
- Cascadable
- Video input and output connections: DVI socket
- Dimensions: 20 x 180 x 85mm; 600g

- **Optional cable:**
AK-320300-020-S (2m), AK-320300-030-S (3m), AK-320300-050-S (5m)



286356 / DS-41211 DVI Video/Audio-Splitter, 2 Port

286363 / DS-42211 DVI Video/Audio-Splitter, 4-Port

286370 / DS-43211 DVI Video/Audio-Splitter, 8-Port

DIGITUS® DVI/Audio Switch

Simple and comfortable selection of the to-be-displayed video signal

The DVI Video-/Audio-Switch allows you to select and play back a DVI video/audio signal from various video sources.

- Various inputs (e.g. PC), 1 output (monitor, beamer etc.)
- Full compatible to DVI digital
- Supports resolutions up to 1.920 x 1.200 pixels or 1.080p
- Audio support
- Source selection via front keys or via IR remote control
- Ideal for classroom, workshops, training facilities, etc.
- Supports DDC, DDC2, DDC2B
- HDCP support

- **Optional cable:**
AK-320300-020-S (2m), AK-320300-030-S (3m), AK-320300-050-S (5m)



286387 / DS-44211 DVI- / Audio-Switch, 2 inputs, 1 output

286394 / DS-45211 DVI- / Audio-Switch, 4 inputs, 1 output

DIGITUS® DVI-Repeater, 50m



Amplifies a DVI signal for distances up to 50m

This compact DVI-Repeater extends the possible transmission range of any DVI signal up to 50m in length to connect a projector or monitor. It controls and compensates possible signal losses automatically.

- DVI signal amplifier extends digital video signals for up to 50m
- Supports High Definition resolutions up to 1.080p or 1.920 x 1.200 pixels
- Video band width: 1.65Gbps/165MHz
- INPUT/OUTPUT connections: DVI-D socket
- Simple to handle, Plug and Play



285687 / DS-54901 DVI-Repeater, 50m

DIGITUS® DVI-Extender via CAT5



Expands a DVI signal to up to 70m

The DVI CAT5 Extender extends the transmission range of your PC-DVI-connection up to 70m via a simple CAT5 cable. The possible resolution depends on the selected range.

- DVI-D extension via CAT5 cable
- Supports a max. resolution of 1.920 x 1.200 pixels at a range of 50m
- Supports a max. extension from up to 70m at a resolution of 800 x 600 pixels
- No external power supply needed



285694 / DS-54101 DVI-Extender via CAT5; single port

DIGITUS® Active VGA on DVI converter



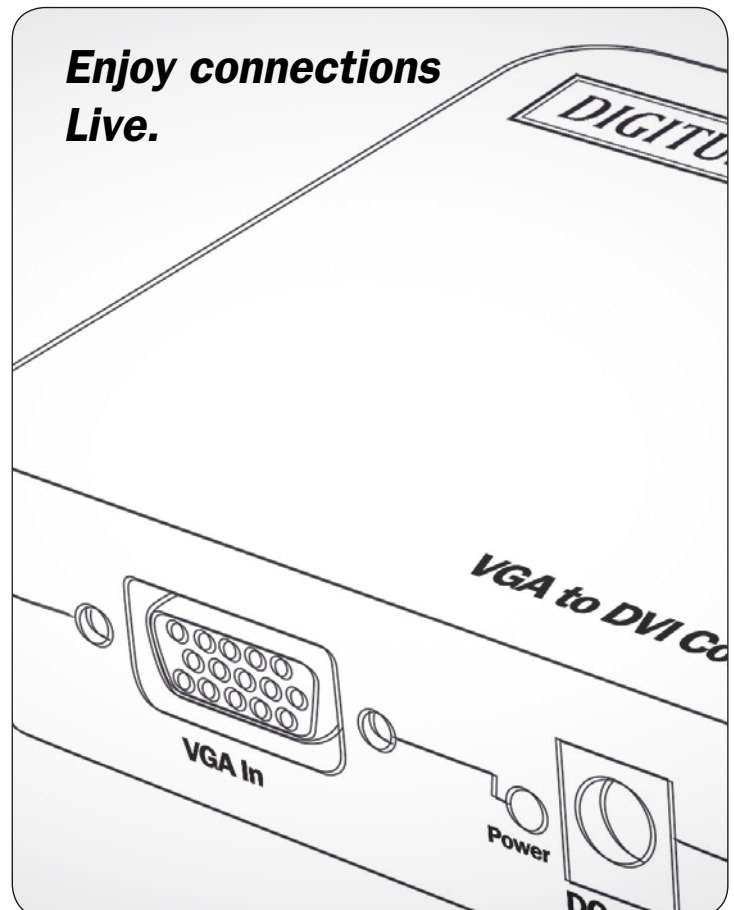
DIGITUS® Original accessories

This converter box turns analog signals of a video source into digital signals. e.g., it is possible to use an old graphics card with a new digital DVI monitor or projector.

- VGA to DVI converter - links a video source with a standard VGS connection (HD DSUB, 15-pin) with a monitor or projector with DVI connection
- Simple handling: Installation in seconds, no manual settings
- Supports DVI input signals with a bandwidth of 165MHz/1.65Gbps per channel (6.75Gbps via all channels)
- Max. resolution: 1.280 x 1.024 pixels at 60/75Hz
- Color depth 8bit per channel (24bit via all channels)

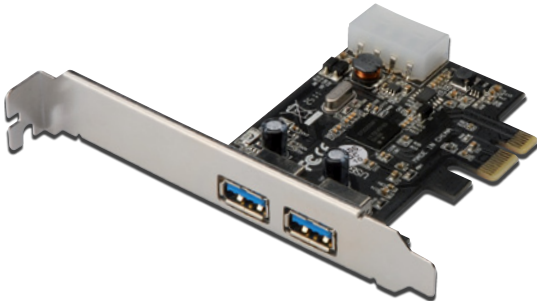


292715 / DS-40201 VGA on DVI converter



PCI Express Interface Cards

DIGITUS® USB 3.0 PCI ExpressCard



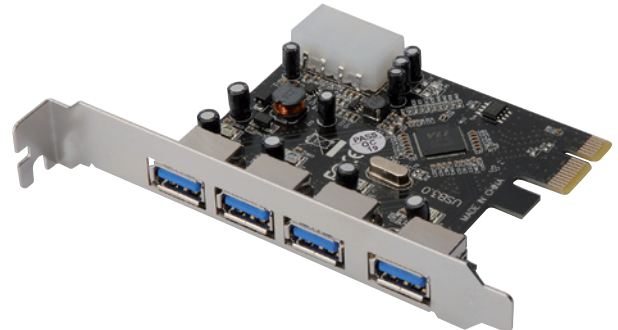
The performance kick for the new generation of ultra-fast USB devices

- 2x USB 3.0 Ports
- Chipset: NEC D720202
- Backward compatible with USB 2.0/1.1 devices
- Supported data transfer rates: Super-Speed (5Gbps), High-speed (480Mbps), Full-speed (12Mbps) and Low-speed (1.5Mbps)
- Supports Plug and Play and Hot-Swapping
- Conform with Universal Serial Bus 3.0 specifications Rev. 1.0
- Corresponds with PCI Express basic specifications 2.0; bus interface PCIe x1
- Supports PCI-Bus-Power-Management interface specifications 1.2
- Incl. Low Profile Slot Panel
- Microsoft certified WHQL drivers for Windows 7 32/64-bit / Vista 32/64-bit and XP 32/64-bit
- Suitable for Windows 7/Vista/XP



326403 / DS-30220-4 USB 3.0 PCI ExpressCard, 2-Port

DIGITUS® USB 3.0 4-Port PCI ExpressCard



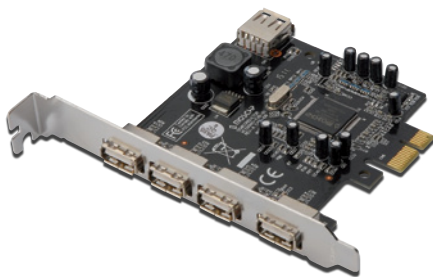
The performance kick for the new generation of ultra-fast USB devices

- 4x USB 3.0 Ports
- VL800 Chipset
- Backward compatible with USB 2.0/1.1 devices
- Supported data transfer rates: Super-Speed (5Gbps), High-speed (480Mbps), Full-speed (12Mbps) and Low-speed (1.5Mbps)
- Supports Plug and Play and Hot-Swapping
- Conform with Universal Serial Bus 3.0 specifications Rev. 1.0
- Corresponds with PCI Express basic specifications 2.0; bus interface PCIe x1
- Supports PCI Bus Power-Management interface specifications 1.2
- Microsoft certified WHQL drivers for Windows 7 32/64-bit, Vista 32/64-bit and XP 32/64-bit
- Supports Windows 7/Vista/XP



309338 / DS-30221 USB 3.0 4-Port PCI ExpressCard

DIGITUS® USB 2.0 4+1-Port PCI ExpressCard



The simple and fast way to equip your system with additional USB ports

- 4x external and 1x internal USB 2.0 ports
- Chipset: MCS9990
- Supports High-Speed (480Mbps), Full-Speed (12Mbps), and Low-Speed (1.5Mbps) data transfer mode for simultaneous use of several USB 2.0/1.1 devices
- Supports Hot-Swapping and Plug and Play
- Suitable for every free PCI Express slot with any lane width
- Supports Windows 7/Vista/XP



309352 / DS-30202-1 USB 2.0 4-Port PCI ExpressCard

DIGITUS® FireWire 800 (1394b) PCIe Card



Expand your system with additional FireWire ports!

- 3x FireWire 800 (1394b) Ports: 2x 9-Pin External + 1x 9-Pin Internal
- Chipset: XIO2213B
- Data transfer rates of 100, 200, 400 and 800Mbps
- Internal 4-Pin Power Connector to connect to the PC power supply unit, makes additional power available when using (recommended)
- Supports Hot-Swapping and Plug and Play of peripheral devices
- Suitable for various types of FireWire 800 (1394b) devices such as external hard disks, DV camcorders, digital cameras, CD-RW/DVD-ROM drives and other Audio/Video devices
- Suitable for Windows 7/Vista/Server 2003 SP1 or higher/XP/2000



322405 / DS-30203-2 PCIe, FireWire 800 Interface Card, 2/1-Ports

DIGITUS® PCI ExpressCard, FireWire 1394a (3+1 ports)



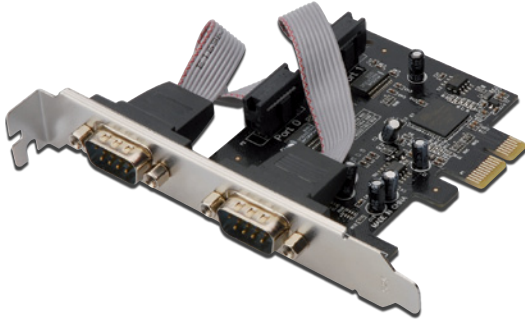
Upgrade your PC with 4 additional IEEE 1394 ports!

- 3x external and 1x internal IEEE 1394 ports, 6-pin
- Chipset: VT6315
- Suitable for every free PCI Express slot with any lane width
- Supports Hot-Swapping and Plug & Play
- Data transfer rate 100/200/400 Mbps
- Suitable for Windows 7/Vista/XP/Server 2003/2000



317777 / DS-30201-3 IEEE 1394a / FireWire PCI ExpressCard

DIGITUS® Serial Interface Card, PCIe



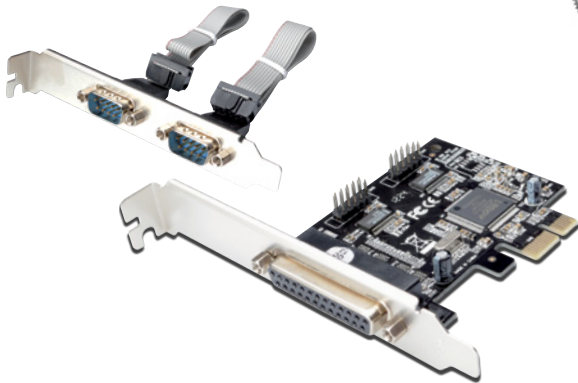
Perfect to connect serial modems, PDSs, digital cameras, printers, ISDN adapters and many more other devices

- 2x DSUB 9, serial interfaces, male, UART 16C950
- Chipset: OXPcie952
- Data transfer rate up to 230.400bps
- Corresponds with PCI Express Base Specifications 1.1
- Compatible with PCI-Power-Management 1.2
- Suitable for Windows 7/Vista/XP



309390 / DS-30000-1 PCIe, Serial Interface Card 2x DSUB 9

DIGITUS® 2 ser. / 1par. Interface card, PCIe



Perfect to connect parallel and serial devices such as printers, scanners, ISDN adapters and many other devices

- Multi-I/O PCIe card
- 2x DSUB 9, serial interfaces, plug, UART16C450/550
- 1x DSUB 25, parallel interface
- Chipset: MCS9901
- Serial data transfer rate up to 2.3Mbps
- Parallel data transfer rate up to 1.5Mbps
- Supports Standard-Parallel-Port (SPP), Enhanced-Parallel-Port (EPP) & Enhanced-Capability-Port (ECP)
- Corresponds with PCI Express Base Specifications 1.0a
- Suitable for Windows 7/Vista/XP/ Server 2003/ 2000



317760 / DS-30040-2 2 ser. / 1par. Interface card, PCIe

DIGITUS® Parallel PCI ExpressCard



Use all advantages of your High-Speed parallel devices

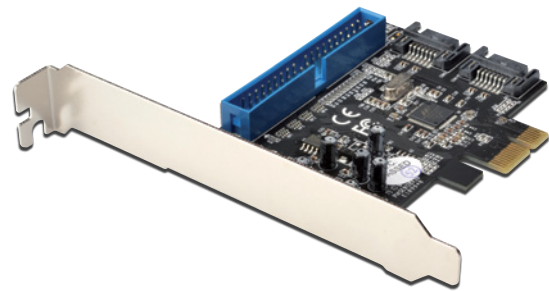
- 1x DSUB 25, parallel interface, socket
- Chipset: OXPcie952
- Data transfer rate up to 2.5Mbps
- Supports Standard Parallel Port (SPP), Enhanced Parallel Port (EPP) & Enhanced Capability Port (ECP)
- Corresponds with PCI Express Base Specifications 1.1
- Compatible with PCI Power Management 1.2
- Scope of delivery: 1 x manual, 1 x driver CD, 1 x low-profile bracket
- Incl. Low Profile Slot Panel
- Suitable for Windows 7/ Vista /XP



309383 / DS-30020-1 PCIe, Parallel Interface Card 1x DSUB 25

DIGITUS® SATA III/PATA PCI Express Combo Card

SATA 600



Combines the performance kick of the new SATA III with up to 6Gbps with the flexibility to be able to connect almost all known HDDs

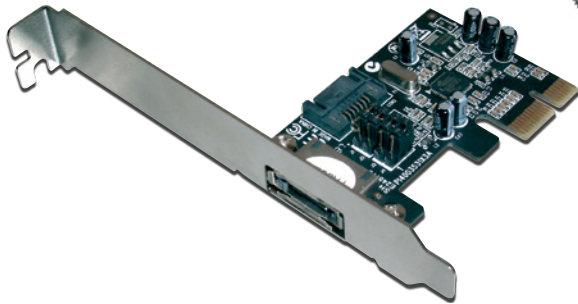
- 2x internal SATA III ports
- 1x internal, parallel ATA port – supports up to UDMA-6 Transfer Mode, ATA and ATAPI
- Chipset: Marvell 88SE9128
- Compatible with PCI Express Specifications v2.0 and backward compatible with PCI-Express 1.x
- Compatible with Serial ATA Specifications 3.0
- Supports a data transfer rate up to 6Gbps, 3Gbps and 1.5Gbps
- Supports RAID Level 0 and 1 (only for SATA HDDs)
- Hot-Plug and Hot-Swapping Features for SATA
- Incl. Low Profile Slot Panel
- Supports Windows 7/Vista/XP



282006 / DS-30106 SATA III / PATA PCI Express Combo Card

PCI Express Interface Cards

DIGITUS® SATA II PCI ExpressCard, 1-Port



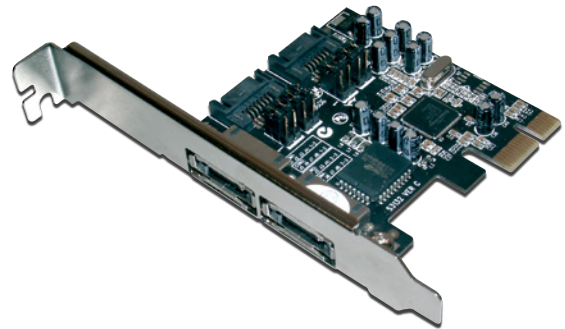
The fast and simple way to upgrade your computer to Serial-ATA-Speed

- 1x external eSATA Port and 1x internal SATA Port
- Chipset: Sil. 3531
- Int. / ext. ports selectable through configuration
- Corresponds with PCI Express Base Specifications 1.0a
- Corresponds with Serial ATA 1.0a Specifications and the complete Serial ATA II addition
- Suitable for every free PCI Express slot with any lane width
- Supports a data transfer rate up to 300MB/s
- Supports NCQ (Native Command Queuing)
- Hot-Plug and Hot-Swapping features
- Suitable for Windows 7/Vista/XP



244813 / DS-30101 SATA II PCI ExpressCard, 1-Port

DIGITUS® SATA II PCI ExpressCard, 2-Port



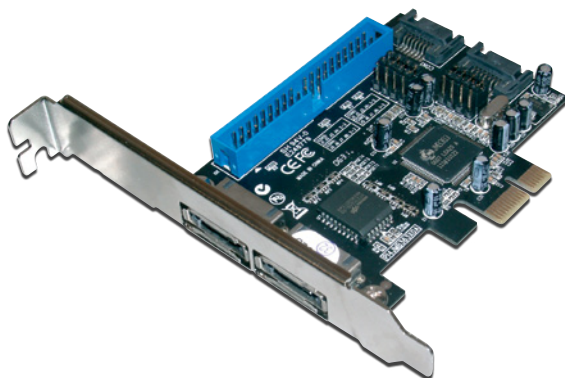
The fast and simple way to upgrade your computer with 2 ports to Serial ATA speed

- 2x external eSATA and 2x internal SATA ports
- Chipset: Sil 3132
- Int. / ext. ports selectable through configuration
- Corresponds with PCI Express Base Specifications 1.0a
- Serial ATA Specifications 1.0a compatible
- Suitable for every free PCI Express slot with any lane width
- Supports RAID levels 0, 1, 0+1
- Supports a data transfer rate up to 300MB/s
- Supports NCQ (Native Command Queuing)
- Hot-Plug and Hot-Swapping features
- Suitable for Windows 7/Vista/XP/Mac OS 10.x



322498 / DS-30102-1 SATA II PCI ExpressCard, 2-Port

DIGITUS® SATA II/PATA PCI Express Combo Card



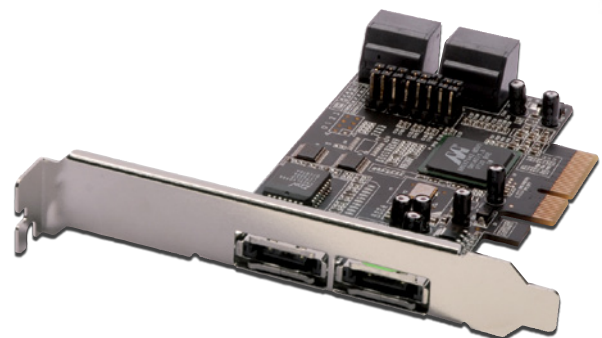
Offers flexibility to connect almost all hard disk types to your computer

- 2x external eSATA and 2x internal SATA ports
- Int. / ext. Ports selectable through configuration
- 1x internal, parallel ATA port - supports up to UDMA-6 Transfer Modes
- Chipset: JMB 363
- Altogether up to 4 devices can be connected
- Corresponds with PCI Express Base Specifications 1.0a
- Corresponds with Serial ATA 1.0a Specifications and the complete Serial ATA II addition
- Supports a data transfer rate up to 300MB/s
- Supports RAID levels 0, 1, 0+1
- Suitable for every free PCI Express slot with any lane width
- Supports NCQ (Native Command Queuing)
- Hot-Plug and Hot-Swapping features for SATA
- Suitable for Windows 7/Vista/XP



244950 / DS-30103 SATA II / PATA PCI Express Combo Card

DIGITUS® SATA II PCI ExpressCard, 4-Port



The fast and simple way to upgrade your computer with 4 ports to Serial ATA Speed

- 4x internal Serial ATA connections, 2 x external eSATA connections for selectable operations
- Chipset: MARVELL 88SX7042
- Bus specifications: PCI-Express x 4
- Compatible with Serial ATA II specifications up to 300MB/sec
- Supports SATA II Native Command Queuing (NCQ)
- Stand-alone PCI Express on Serial-ATA Host-Controller
- Four independent Serial ATA channels for simultaneous connection of one Serial ATA end device respectively
- Supports Windows 7/Vista/XP



244950 / DS-30103 SATA II / PATA PCI Express Combo Card

ExpressCard Interface Cards



DIGITUS® USB 3.0 ExpressCard

The performance kick for the new generation of ultra-fast USB devices

- 2x USB 3.0 Ports
- Chipset: NEC D720200
- Backward compatible with USB 2.0/1.1 devices
- Supported data transfer rates: Super-Speed (5Gbps), High-Speed (480Mbps), Full-Speed (12Mbps) and Low-Speed (1.5Mbps)
- Supports Plug and Play and Hot-Swapping
- Corresponds with ExpressCard Specifications 1.0; ExpressCard/34 Form Factor
- Network connection for optional power supply unit (+5V/900mA) for additional power supply to meet USB 3.0 power requirements
- Perfect to upgrade your notebook
- Suitable for Windows 2000/XP/Vista/7/ Mac OS 10.X



322443 / DS-31220-1 USB 3.0 ExpressCard, 2-Port

DIGITUS® USB 2.0 ExpressCard

The simple and fast way to upgrade your notebook with 4 additional USB ports

- 4x USB 2.0 Type A connections
- Chipset: NEC 720114
- ExpressCard/34 Form Factor
- Data transfer rate up to 480 Mbps
- Supports Hot-Swapping and Plug and Play
- Corresponds EHCI and OHCI standards and specifications
- 1x DC power supply connection (5V/2A)
- Suitable for Windows 7/Vista/XP



244943 / DS-31203 USB 2.0 ExpressCard, 4-Port

DIGITUS® Combo USB 2.0/FireWire ExpressCard

Upgrade your notebook with 2 additional IEEE connections and 1 USB connection.

- 1x USB 2.0 Type-A-Socket
- 2x IEEE1394 6-pin connections
- Chipset: VIA 6315
- ExpressCard/34 Form Factor
- Data transfer rate: IEEE1394: 100/200/400 Mbps, USB 2.0 up to 480Mbps
- Supports Hot-Swapping and Plug and Play
- Corresponds with IEEE 1394, OHCI1.1 and ExpressCard 1.0 Standards and Specifications
- 1x DC power jack (12V /1A)
- Included software "Ulead Videostudio"
- Suitable for Windows 7/Vista/XP/Server 2003/2000



269304 / DS-31202-1 Combo USB 2.0 / FireWire ExpressCard

ExpressCard Interface Cards

DIGITUS® IEEE 1394a / FireWire ExpressCard

The simple and fast way to upgrade your notebook with 2 additional FireWire ports

- 2 x IEEE1394 6-pin connections
- VT6315 Chipset
- 2x IEEE1394 6-pin connections
- ExpressCard/34 Form Factor
- Compatible with DV camcorders, digital cameras, scanners and other Audio/Video devices
- Data transfer rates up to 100, 200 and 400Mbps
- Corresponds with IEEE 1394, OHCI1.1 and ExpressCard 1.0 Standards and Specifications
- 1x DC power jack (12V/1A)
- Hot-Swapping allows to connect and remove devices during current operations
- Supports Windows 2000/XP/Vista/Windows 7



320753 / DS-31201-3 IEEE 1394a / FireWire ExpressCard

DIGITUS® eSATA II 300 ExpressCard

The fast and simple way to upgrade your notebook to serial ATA speed

- 1x eSATA Port
- eSATA II 300 ExpressCard, Slim-Version
- Simple installation through Plug and Play
- ExpressCard/34 Form Factor
- SATA data transfer rate up to 3.0 Gbps
- Supports Hot-Plug of connected devices
- Corresponds with ExpressCard 1.0 Specifications
- Supports SATA II Native Command Queuing (NCQ)
- Suitable for Windows 7/Vista/XP



296881 / DS-31101-1 eSATA II 300 ExpressCard, Slim-Version

DIGITUS® USB 2.0, 4-Port Cardbus

Simple "Plug-and-Play" installation

- 4x USB 2.0 Type A/socket (480Mbps)
- 1x DC socket (for optimum power supply)
- Chipset: VIA 6212
- Data transfer rates: USB 1.1 OHCI 1.5Mbps, 12Mbps; USB 2.0 EHCI 480Mbps
- Bus interface: CardBus Type II, 32-bit 33MHz, 3.3V
- Compatible with USB 2.0 EHCI and with USB 1.1 OHCI
- Supports Hot-Swapping and Wake-Up
- Suitable for Windows 7/Vista/XP



254324 / DS-32220 Cardbus, USB 2.0 card, 4-Ports

DIGITUS® RS232 ExpressCard

Perfect to connect serial modems, PDSs, digital cameras, printers, ISDN adapters and many more other devices

- 1x DSUB 9 / RS232, serial interface, male
- Chipset: PL 2303X
- ExpressCard, Form Factor 34
- Data transfer rate up to 230.400bps
- Supports Hot-Swapping of devices and Plug and Play
- Power supply via Express-Bus, separate power supply unit or separate battery not needed
- Works with the most different serial RS232 devices such as modems, PDSs, label printers, barcode scanners, digital cameras etc.
- Suitable for Windows 7/Vista/XP



322467 / DS-31204-1 RS232 Express Card 1-Port

244882 / DS-31205 RS232 Express Card 2-Ports

DIGITUS® Parallel Port ExpressCard

Use all advantages of your High-Speed Parallel devices

- 1x DSUB 25, parallel interface, socket
- Chipset: PL2305
- ExpressCard, Form Factor 34
- Supports Hot-Swapping devices and Plug and Play
- Power supply via Express-Bus, separate power supply unit or separate battery not needed
- Works with most different printers with parallel interface
- Suitable for Windows 7/Vista/XP



244868 / DS-31206 Parallel Port ExpressCard

DIGITUS® Serial, parallel Combo ExpressCard

Perfect to connect parallel and serial devices such as printers, scanners, ISDN adapters and many other devices

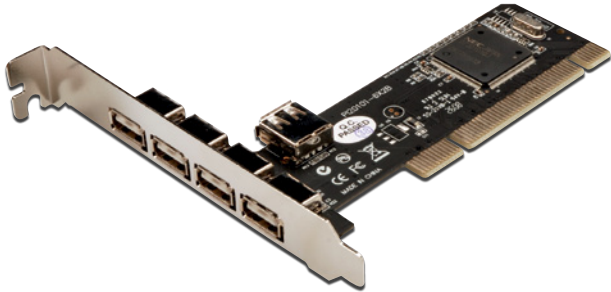
- 1x DSUB 9 / RS232, serial interface, male
- 1x DSUB 25, parallel interface
- Chipset: MCS 7715
- ExpressCard, Form Factor 34
- Supports Hot-Swapping devices and Plug and Play
- Power supply via Express-Bus, separate power supply unit or separate battery not needed
- Works with most different parallel and serial RS232 devices such as modems, PDAs, printers, barcode scanners, digital cameras etc.
- Incl. adapter cable (DB26 socket on 1x DB9 plug + 1x DB25 socket)
- Suitable for Windows 7/Vista/XP



244851 / DS-31207 Serial, parallel Combo ExpressCard

PCI Interface Cards

DIGITUS® USB 2.0, PCI Card



The simple and fast way to upgrade your computer with 4 additional USB ports

- 4x external USB 2.0 Type A/socket (480Mbps)
- 1x internal USB 2.0 Type A/socket (480Mbps)
- Chipset: NEC 720101
- USB High-Speed (480Mbps), Full-Speed (12Mbps) und Low-Speed (1.5Mbps) data transfer modes are supported
- Corresponds with USB specifications Revision 2.0
- Supports Hot-Swapping
- Scope of delivery: 1x User manual
- Suitable for Windows 2000/XP Vista 32-bit/64-bit



254287 / DS-33220 PCI, USB 2.0 Card, 4+1-Ports

DIGITUS® USB 2.0, PCI Card



The simple and fast way to upgrade your computer with 3 additional USB ports

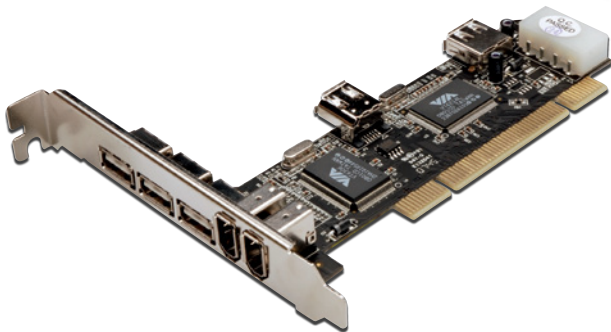
- 3x external USB 2.0 Type A/sockets (480Mbps)
- 1x internal USB 2.0 Type A/socket (480Mbps)
- Chipset: VIA 6212
- USB High-Speed (480Mbps), Full-Speed (12Mbps) und Low-Speed (1.5Mbps) data transfer modes are supported
- Corresponds with USB specifications Revision 2.0
- PCI 32-bit 33MHz-Interface
- Supports Hot-Swapping
- Suitable for Windows 2000/XP/Vista 32-bit/64-bit
- Scope of delivery: 1x User manual, 1x Low-Profile Bracket (only DS-33221)



254294 / DS-33221 PCI, USB 2.0 Card, 3+1-Ports

320777 / DS-33222-1 PCI, USB 2.0 Card, 4+1-Ports

DIGITUS® USB 2.0/FireWire-Combo Card, PCI



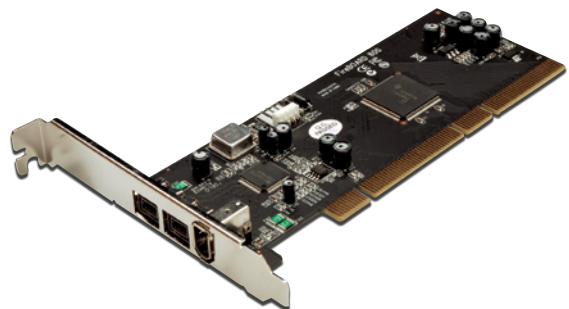
Offers possible High-Speed USB and FireWire connections for fast and efficient data exchange

- Combo card USB 2.0 and FireWire 400 (1394a)
- 3 x external USB 2.0 Type A/sockets (480Mbps)
- 1 x internal USB 2.0 Type A/socket (480Mbps)
- 2 x external FireWire 400 (1394a) 6-pin Ports (400Mbps)
- 1 x internal FireWire 400 (1394a) 6-pin Port (400Mbps)
- Chipsets: VIA6212/6214 + VT6306
- Corresponds with USB specifications Revision 2.0
- USB High-Speed (480Mbps), Full-Speed (12Mbps) und Low-Speed (1.5Mbps) data transfer modes are supported
- Corresponds with IEEE 1394-1995, 1394a-2000 and OHCI 1.1 Standards
- Supports FireWire Bus data transfer rates of 100, 200 and 400Mbps
- Hot-Swapping allows to connect and remove devices during current operations
- Suitable for Windows 7/Vista/XP



254478 / DS-33230 PCI, USB 2.0 / FireWire Combo Interface Card

DIGITUS® FireWire 800/400 Combo Card, PCI



The simple and fast way to upgrade your system with 2 additional FireWire ports

- 2x FireWire 800 (1394b) 9-Pin Ports and 1x FireWire 400 (1394a) 6-Pin Port
- Chipsets: TI 82AA + 81BA3
- Data transfer rates of 100, 200, 400 and 800Mbps
- Supports Hot-Swapping and Plug and Play of peripheral devices
- Bus Interface: PCI-Bus 32/64bit
- Supports IEEE 1394b, backward compatible with IEEE 1394a
- Supports isochronal and also asynchronous data transfer modes
- Suitable for different types of FireWire 800 (1394b) and FireWire 400 (1394a) devices such as external hard disks, DV camcorders, digital cameras, CD-RW/DVD-ROM drives and other Audio/Video devices
- Scope of delivery: 1x User manual, 1x Ulead Video Studio CD
- Suitable for Windows 7/Vista/XP



254379 / DS-33205 PCI, FireWire 800/400 interface cards, 2/1-Ports

DIGITUS® FireWire A, PCI Cards



The simple and fast way to upgrade your system with additional FireWire ports

Expands your possible PC connections by 3 FireWire-A ports. Simple connection of, e.g., DV camcorders or external casings to your PC.

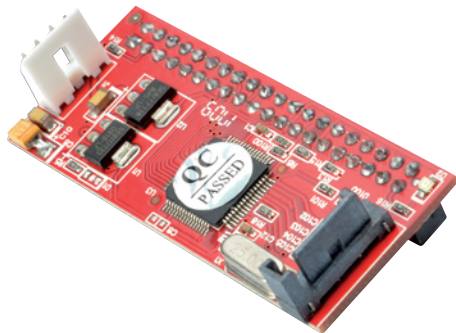
- 3 IEEE1394a (FireWire) ports for High-Speed I/O connections
- One (1) internal IEEE1394a Port (shared use with the first external IEEE1394 Port)
- External connections: 1x FireWire A, 6-Pin/socket, 1x FireWire A, 4-Pin/socket
- Internal connections: 1x FireWire A, 6-Pin/socket
- Conform with IEEE 1394-1995, 1394a (rev. 1.1) and OHCI Interface Specifications 1.0
- Supports data transfer rates of 100, 200 and 400 Mbps
- PCI 32-bit 33MHz-Interface
- Hot-Swapping allows to connect and remove devices without work interruption
- VIA VT6306 Chipset
- Scope of delivery: 1x User manual, 1x Low Profile Bracket
- Suitable for Windows 7/ Vista 32-/64-bit/ XP/2000



252733 / DS-33201 PCI, FireWire A Card, 2+1 Ports

252740 / DS-33202 PCI, FireWire A Card, 2+1 Ports, incl. ULEAD Software

DIGITUS® SATA to IDE Adapter



Ideal for use with older motherboards that do not support SATA connections

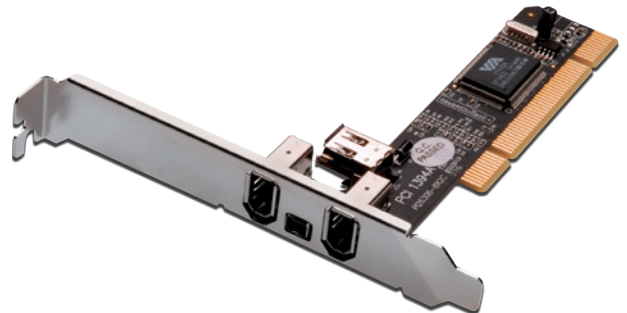
Enables the use of storage devices with SATA connection on an IDE controller.

- Stand-alone Ultra ATA on Serial ATA Bridgeboard Design
- Serial ATA 1.0 Specifications, Revision 2.2 conform
- Chipset: SIL3811
- Transfer rate: 1.5Gb/s
- Supports all kinds of SATA Storage Devices (DVD, DVD-RAM, MO, CD-ROM, CD-RW, Hard Disk, ...)
- Compact dimensions for direct connection to SATA hard disks
- Board design: Horizontal version



317791 / DS-33150-1 SATA to IDE Adapter

DIGITUS® FireWire A, PCI Cards



The simple and fast way to upgrade your system with additional FireWire ports

Expands your possible PC connections by four FireWire-A-Ports. Simple connection of devices such as DV camcorders or external casings to your PC.

- 4 IEEE1394a (FireWire) Ports for High-Speed I/O connections
- One (1) internal IEEE1394a port (shared use with first external IEEE1394 port)
- External connections: 2x FireWire A, 6-Pin/socket, 1x FireWire A, 4-Pin/socket
- Internal connections: 1x FireWire A, 6-Pin/socket
- Conform with IEEE 1394-1995, 1394a (rev. 1.1) and OHCI Interface Specifications 1.0
- Supports data transfer rates of 100, 200 and 400 Mbps
- PCI 32-bit 33MHz-Interface
- Hot-Swapping allows to connect and remove devices during current operations
- Chipset: VIA VT6306
- Scope of delivery: 1x User manual, 1x Low Profile Bracket
- Suitable for Windows 7/Vista/XP



317784 / DS-33203-1 PCI, FireWire A Card, 3+1 Ports

252764 / DS-33204 PCI, FireWire A Card, 3+1 Ports, incl. ULEAD Software

DIGITUS® IDE to SATA Adapter



Ideal for use with older motherboards that do not support SATA connections

Enables the use of storage devices with SATA connection on an IDE controller.

- Stand-alone Ultra ATA on Serial ATA Bridgeboard Design
- Serial ATA 1.0 Specifications, Revision 2.2 conform
- Chipset: SIL3811
- Transfer rate: 1.5Gb/s
- Supports all kinds of SATA Storage Devices (DVD, DVD-RAM, MO, CD-ROM, CD-RW, Hard Disk, ...)
- Compact dimensions for direct connection to SATA hard disks
- Board design: Horizontal version



317807 / DS-33151-1 IDE to SATA Adapter

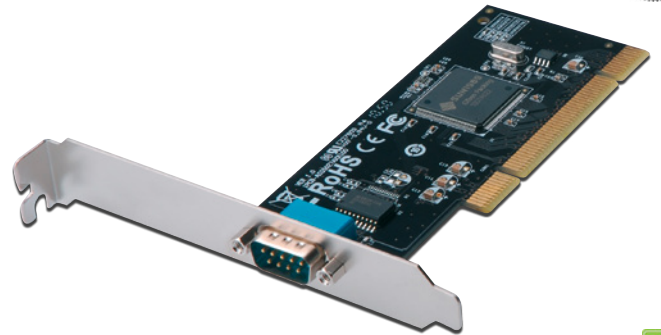
Serial/Parallel PCI Interface Cards

DIGITUS® Serial Interface Card, PCI

Perfect to connect serial modems, PDAs, digital cameras, printers, ISDN adapters and many more other devices

The universal PCI serial interface card enables users to add or supplement one or more RS232 port(s) to PC based systems.

- 1x DSUB 9, serial interface, male
- Chipset: SUN 1989
- Data transfer rate up to 115.2Kbps
- Universal PCI interface 3.3V & 5V, 32-bit/64-bit
- Compatible with the specifications PCI 33MHz, Version 3.0/2.3/2.2/2.1
- Compatible with 16C950UART specifications
- 128 Bytes FIFO On-Board-Buffer
- Integrated hardware-autoflow-control to avoid loss of data
- Plug and Play, I/O address and IRQ allocation via BIOS
- Microsoft® WHQL tested
- Supported operating systems: Windows/Linux/DOS



292982 / DS-33000-1 PCI, Serial interface card 1x DSUB 9

292999 / DS-33001-1 PCI, Serial interface card 2x DSUB 9

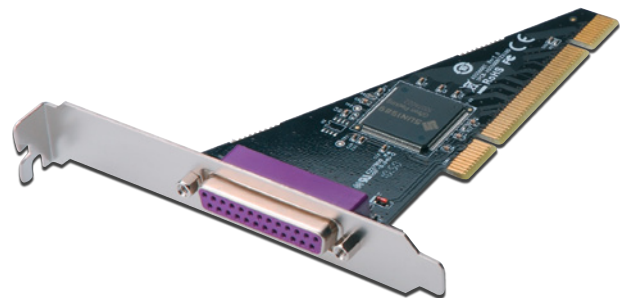
278528 / DS-33002-1 PCI, Serial interface card 4x DSUB 9

DIGITUS® Parallel interface card, PCI

Use all advantages of your High-Speed Parallel devices

This PCI Parallel interface card enables users to add or supplement a ECP/EPP/SPP/BPP interface on PC based systems.

- 1x DB25 Parallel Port
- Chipset: SUN1989
- Data transfer rate up to 1.8Mbps
- Universal PCI interface 3.3V & 5V, 32/64bit
- Compatible with IEEE1284 Standard
- Supports Standard Parallel Port (SPP), Bi-directional Parallel Port (BPP), Enhanced Parallel (EPP) & Enhanced Capability Port (ECP)
- Automatic switch between ECP/EPP/SPP/BPP mode without configuration
- Plug-and-Play, I/O address and IRQ allocation via system
- Microsoft® WHQL tested
- Supported operating systems: Windows/Linux/ DOS



293002 / DS-33010-1 PCI, Parallel interface card 1x DSUB 25

DIGITUS® 2 Ser. / 1 Par. Interface card, PCI

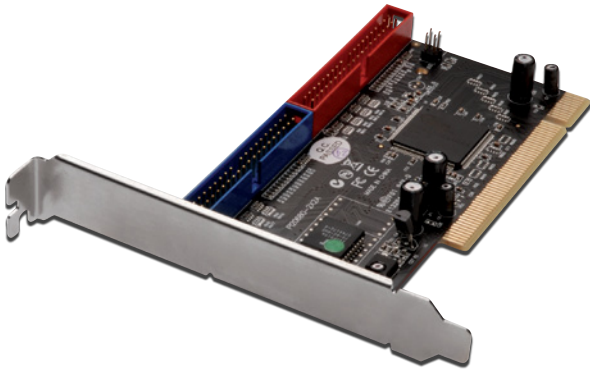
Perfect to connect parallel and serial devices such as printers, scanners, ISDN adapters and many more devices

- Multi I/O PCI card
- 2x DSUB 9, serial interfaces, male, UART16C450/550
- 1x DSUB 25, parallel interface, socket
- Chipset: MCS9865
- Serial data transfer rate up to 115.200bps
- Parallel data transfer rate up to 1.5Mbps
- Supports Standard Parallel Port (SPP), Enhanced Parallel Port (EPP) & Enhanced Capability Port (ECP)
- Corresponds with PCI Local Bus specifications, Revision 2.3, 32-bit-Bus
- Simple Plug and Play
- Automatic allocation of IRQ- and I/O addresses
- Scope of delivery: 1x User manual, 1x driver CD, 1x Standard-Bracket with serial ports, 3x Low-Profile Brackets
- Suitable for Windows Vista/Server 2003/XP/2000



309376 / DS-33040-1 PCI, 2 Ser. / 1 Par. Interface card

DIGITUS® Ultra ATA 133 RAID-Controller, PCI Card



The performance and inexpensive RAID solution for data storage

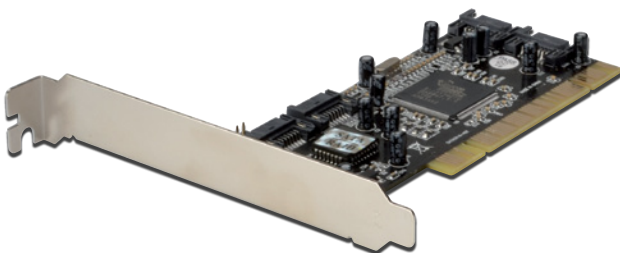
Expands the PC system by 2 additional IDE/ATA interfaces for up to 4 IDE/ATA devices. Optional use as Standard-IDE/ATA-Controller or as RAID Controller that supports RAID 0, 1, 0+1 and JBOD functions.

- 2x Ultra ATA 133 IDE connections for up to 4 IDE/ATA devices
- Compatible with ATA/ATAPI-6 specifications
- Supports Scatter/Gather function at DMA/UDMA
- Maximum PCI Bus-Master data transfer rate of 66MB/sec supported
- Fully backward compatible with Ultra ATA/133, EIDE/Fast ATA-2 IDE & ATAPI devices
- PCI Bus 32-bit
- Silicon Image 0680 Chipset
- Supports RAID 0, 1, 0+1 and JBOD functions
- Suitable for Windows 7/Vista/XP



252702 / DS-33104 IDE ATA133 Raid-Controller, PCI 32 bit

DIGITUS® SATA 150 RAID PCI card, 4-Port



The fast and simple way to upgrade your computer to Serial-ATA-Speed

- 4x internal Serial ATA connections, 2x external eSATA connections for selective operations
- Chipset: Sil. 3114
- Conform with SATA, Revision 1.0
- Stand-alone PCI on Serial ATA Host Controller
- Serial ATA Generation 1, data transfer rate up to 150MB/sec
- Supports the following Raid levels: 0 = Disk Striping, 1 = Disk Mirroring, 5= Parity Raid, 1+0 = combination of Disk Striping and Disk Mirroring
- Four independent Serial ATA channels for simultaneous connection of one Serial ATA end device respectively
- Supports hard disks larger than 137GB
- Conform with PCI IDE Controller specifications, Rev. 2.3, 32-bit, 33/66Mhz
- Suitable for Windows 7/Vista/XP



322412 / DS-33102-1 SATA 150 PCI card, 4-Port RAID

DIGITUS® SATA 150 RAID PCI Card, 2-Port



The fast and simple way to upgrade your computer to Serial-ATA-Speed

- 2x Serial ATA connections
- Chipset: Sil 3512
- Conform with SATA, Revision 1.0
- Conform with Serial ATA 1.0, Revision 2.3
- Stand-alone PCI on Serial ATA Host Controller
- Serial ATA Generation 1, Data transfer rate up to 150MB/sec
- Supports RAID for selectively more speed or data security
- Supports hard disks larger than 137GB
- Two independent Serial ATA channels to operate up to two Serial ATA hard disks
- Suitable for Windows 7/Vista/XP



317746 / DS-33101-1 SATA PCI Controller, 2-Port

DIGITUS® 7.1 PCI Sound card



The ideal partner for surround music, movie playback and more realistic gaming

- Simultaneous recording and playback
- Full-duplex 8CH DAC/2CH ADC
- Supports sample rates of 48/44.1KHz for recording and playback
- Supports newest Dolby Digital EX and DTS ES 6.1/7.1 CH DVD sound playback
- DirectSound™ 3 HW acceleration
- Corresponds with PCI Rev. 2.2 with Bus-Mastering Mode
- Corresponds with ACPI Power-Down Management
- System requirements: PC of Pentium class with available PCI-Slot; DirectX 8.1 or higher
- Suitable for Windows 7/Vista/XP



317753 / DS-33700-1 7.1 PCI sound card

Monitor and Video Cable

DIGITUS® VGA Monitor Connecting cable HD15/St - HD15/St

For highest demands on image quality – thanks to gold plated contacts, ferrites and threefold shielding.

VGA-Monitor connecting cable, HD15, St/St, 1.8m, 3Coax/9C, 2x Ferrite, UL, bl/gr, gold to connect a PC, e.g., with a monitor or beamer/projector.

- Connection 1: HD DSUB, 15-pin, plug
- Connection 2: HD DSUB, 15-pin, plug
- Cable type: 3Coax + 9 wire
- UL certified: no UL
- Display Data Channel: DDC2
- Hood: moulded
- Shielding: Double shielded
- AWG: 28
- Wire material: CU
- Contact surface: gold plated
- Ferrite Filter: 2 x Ferrite Filter
- Color connections: black/grey
- Packaging: DIGITUS® Polybag
- Color cable: black



287056 / DK-310105-018-D VGA Monitor Connecting CABLE, HD15/St on HD15/St, 1.8m

287063 / DK-310105-030-D VGA Monitor Connecting CABLE, HD15/St on HD15/St, 3m

287094 / DK-310105-050-D VGA Monitor Connecting CABLE, HD15/St on HD15/St, 5m

HDMI High Speed connecting CABLE, Type A/St - Type A/St

Full HD and 3D capable

This full HD (1.080p) and 3D capable CABLE connects audio/video devices such as Blue-ray player, game consoles etc. to TV, monitor or PC

- Connection 1: HDMI Type A, plug
- Connection 2: HDMI Type A, plug
- HDMI Standard: High-Speed HDMI
- UL certified: UL20276
- HDTV Standard: 1080p
- HDTV resolution max.: 1.920 x 1.200 pixel, 60Hz
- Hoods: moulded
- Shielding: Double shielded
- Wire material: CU
- AWG: 30
- Contact surface: gold plated
- Color connections: black
- Packaging: Polybag



295525 / AK-330102-010-S HDMI High Speed Connecting CABLE, Type A/St on Type A/St, 1.0m

295532 / AK-330102-020-S HDMI High Speed Connecting CABLE, Type A/St on Type A/St, 2.0m

295549 / AK-330102-030-S HDMI High Speed Connecting CABLE, Type A/St on Type A/St, 3.0m

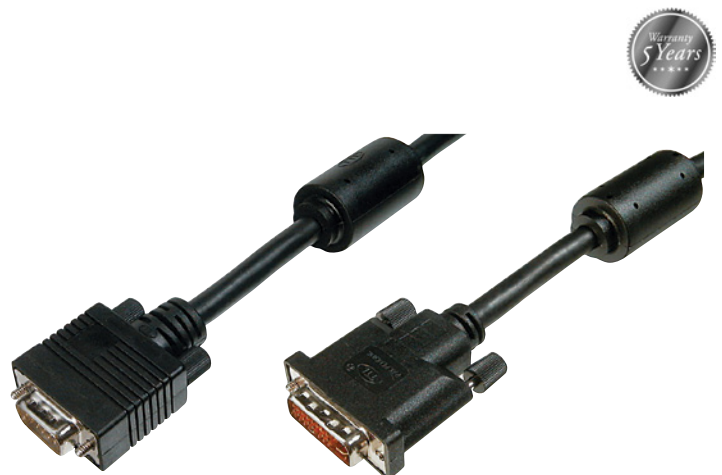
DVI Adapter CABLE, DVI(24+5)/St - HD15/St

HD-Ready, Dual Link

DVI Adapter CABLE, DVI(24+5) - HD15, 2x Ferrite, St/St, 2.0m, DVI-I Dual Link, UL, black

This analog HD ready DVI CABLE (Dual Link) connects audio/video devices with HD15 (VGA) interface such as PC, notebook, monitor, TV or beamer.

- Connection 1: DVI-I, (24+5), plug
- Connection 2: HD DSUB, 15-pin, plug
- UL certified: UL20276
- HDTV Standard: 1080i
- HDTV resolution max.: 1.920 x 1.200 pixel, 60Hz
- Hood: moulded
- Shielding: Double shielded
- AWG: 28
- Wire material: CU
- Ferrite Filter: 2 x Ferrite Filter
- Contact surface: nickel plated
- Color CABLE: black
- Color connections: black
- Packaging: Polybag



298526 / AK-320300-020-S DVI Adapter CABLE, DVI(24+5)/St on HD15/St, 2.0m

Subsequently we'll give you an overview over the ASSMANN cable assortment

NETWORK CABLE

- PATCH CABLE
- TRUNK CABLE

INSTALLATION CABLE

FIBER OPTICS CABLE

COMPUTER CABLE

- KVM CABLE
- USB & FIREWIRE CABLE
- IDE, SATA, SAS & INTERNAL POWER CABLE
- SERIAL PARALLEL/PS-2 CABLE & ADAPTER
- THUNDERBOLD CABLE

MONITOR CABLE

- DISPLAYPORT CABLE & ADAPTER
- DVI CABLE & ADAPTER
- HDMI CABLE & ADAPTER
- VGA CABLE

DEVICE POWER CORD

SMARTPHONE & TABLET CABLE

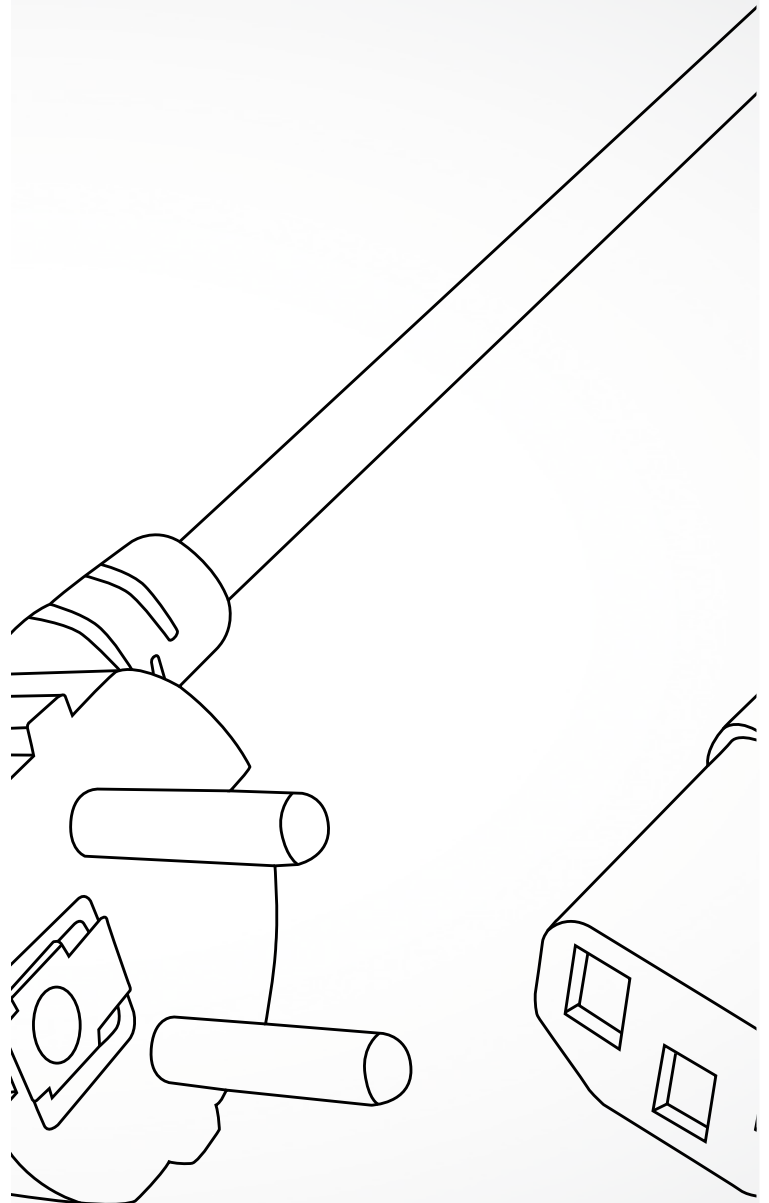
- MHL-CABLE
- SYNC/LOAD CABLE

AUDIO/VIDEO CABLE

- AUDIO/VIDEO CABLE
- TELEPHONE CABLE & ADAPTER
- TV/SAT CABLE & ADAPTER

CABLE MANAGEMENT

CABLE TEST DEVICES





Not just a camera – but a system!

DIGITUS® Professional offers a comprehensive security and surveillance range. For us it is not only important offering a low priced camera also but a holistic and compatible system. A wide range of accessories is here just as important as unified software for all products.

Our products are fit for any purpose. They are suitable for indoors and outdoors monitoring, waterproof (if necessary), they feature residual light amplification (depending on the application), infrared detectors and/or motion tracking – a system from a single source.



Professional

www.digitus-ip-cams.com



**You'll find the complete DIGITUS® assortment with high quality
computer & network accessories products under:**

www.digitus.info

All indicated cable lengths may deviate up to +/- 5%. Forwarding and copying this document is not permitted unless explicitly allowed. Infringements are subject to compensation for damages.
Afore mentioned brand names and logos are trademarks or registered trademarks of the respective proprietor All information is subject to changes and without warranty. Errors and technical changes reserved. Deviations in design from the images
in the catalogue are also reserved. Supply and delivery are subject to availability. No liability for printing errors. DIGITUS® is a registered trade mark.