

HUMMINGBIRDS of the Madre de Dios watershed, Perú 1

Joseph A. Tobias, Philip Koch, Chris Merkord

Asociación para la Conservación de la Cuenca Amazónica / Amazon Conservation Association

Photos: J. Tobias (JT), P. Koch (PK), C. Merkord (CM); with contributions from R. Ahlman (RA), N. Athanas (NA), C. Bushell (CB), V. Claverie (VC), G. Gerra (GG), A. Grosset (AG), J. Harding (JHa), J. Hornbuckle (JHo), Dan Lane (DFL), D. Lebbin (DJL), J. Lowen (JL), S. Metildi (SM), Z. Peterson (ZP), F. Schmitt (FSchm), F. Schultz (FSchu), S. Sommazzi (SS), D. Stotz (DS), U. Valdez (UV), R. Williams (RW), S. Woods (SW). Produced by: R.B. Foster & T.S. Wachter, with support from Ellen Hyndman Fund and Moore Foundation.

© J.A. Tobias [EGI, Oxford University; joseph.tobias@zoo.ox.ac.uk], P. Koch, C. Merkord. Support from Amazon Conservation Association (ACCA) and Gordon & Betty Moore Foundation. © ECCo, The Field Museum, Chicago, IL 60605 USA. [rrc@fieldmuseum.org] [http://fieldmuseum.org/Idtools] **Rapid Color Guide # 230** version 3 06/2012

A: Treeline/scrub/puna (> 3300 m). **B:** Montane forests and scrub (1000–3300 m). **C:** Foothill/submontane forests and scrub (400–1000 m). **D:** Lowland forest and grasslands (0–400 m)



1 *Eutoxeres condamini gracilis*
B,C CM



2 *Glaucis hirsutus hirsutus*
B,C,D ♂ JT



2 *Glaucis hirsutus hirsutus*
B,C,D ♀ JT



2 *Glaucis hirsutus hirsutus*
B,C,D Juv. JT



3 *Threnetes leucurus rufigastra*
C,D ♂ JT



3 *Threnetes leucurus rufigastra*
C,D Juv. JT



4 *Phaethornis ruber ruber*
D ♂ JT



4 *Phaethornis ruber ruber*
D ♀ JT



5 *Phaethornis stuarti*
B,C JT



5 *Phaethornis stuarti*
B,C JT



6 *Phaethornis hispidus*
C,D JT



6 *Phaethornis hispidus*
C,D JT



7 *Phaethornis guy apicalis*
B,C RW



8 *Phaethornis koepckeae*
B,C PK



9 *Phaethornis philippii*
D JT



9 *Phaethornis philippii*
D JT

COLIBRÍES de la cuenca de Madre de Dios, Perú

Joseph A. Tobias, Philip Koch, Chris Merkord

Asociación para la Conservación de la Cuenca Amazónica / Amazon Conservation Association

Fotos de : J.Tobias (JT), P. Koch (PK), C. Merkord (CM); con contribuciones de R. Ahlman (RA), N. Athanas (NA), C. Bushell (CB), V. Claverie (VC), G. Gerra (GG), A. Grosset (AG), J. Harding (JHa), J. Hornbuckle (JHo), Dan Lane (DFL), D. Lebbin (DjL), J. Lowen (JL), S. Metildi (SM), Z. Peterson (ZP), F. Schmitt (FSchm), F. Schultz (FSchu), S. Sommazzi (SS), D. Stotz (DS), U. Valdez (UV), R. Williams (RW), S. Woods (SW). Producido por R.B. Foster & T.S. Wachter, con ayuda del Ellen Hyndman Fund y Moore Foundation.

© J.A. Tobias [EGI, Oxford University; joseph.tobias@zoo.ox.ac.uk], P. Koch, C. Merkord. Ayuda de la Asoc. para la Conserv. de la Cuenca Amazónica (ACCA) y del Moore Foundation.
 © ECCo, The Field Museum, Chicago, IL 60605 USA. [rrc@fieldmuseum.org] [http://fieldmuseum.org/Idtools] **Rapid Color Guide # 230** version 3 06/2012
A: Ceja de selva/matorral/puna (> 3300 m). **B:** Bosque montano/matorral (1000–3300 m). **C:** Piedemonte/bosque montano bajo/matorral (400–1000 m). **D:** Selva baja/pampas (0–400 m)



10 *Phaethornis malaris*
D ♂ JT



10 *Phaethornis malaris*
D JT



11 *Doryfera ludovicae ludovicae*
B JT



13 *Campylopterus largipennis aequatorialis*
C JT



14 *Eupetomena macroura macroura*
D ♂ AG



15 *Florisuga mellivora mellivora*
B,C,D ♂ GG/SS



15 *Florisuga mellivora mellivora*
B,C,D adult ♀ (andromorph) JT



15 *Florisuga mellivora mellivora*
B,C,D ♀ (typical) NA



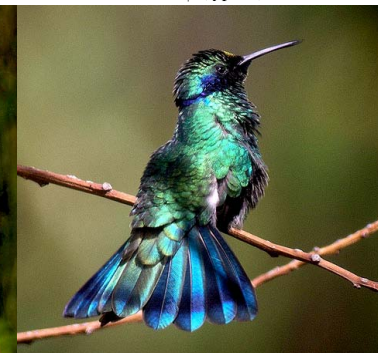
16 *Colibri delphinae*
B,C RW



16 *Colibri delphinae*
B,C ♂ JT



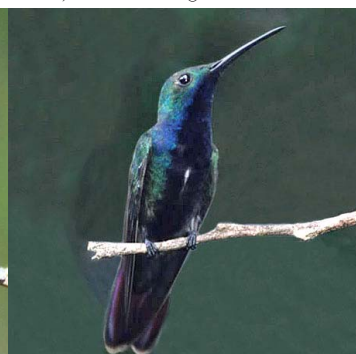
17 *Colibri thalassinus*
B,C JT



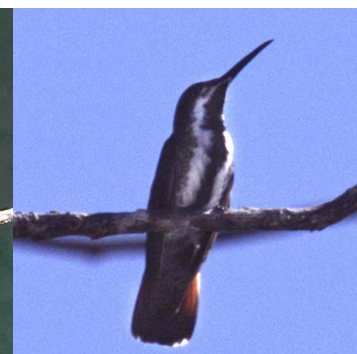
18 *Colibri coruscans*
A,B,C VC



18 *Colibri coruscans*
A,B,C VC



19 *Anthracothorax nigricollis*
C,D ♂ FSchu



19 *Anthracothorax nigricollis*
C,D ♀ JT



20 *Klais guimeti pallidiventris*
B,C ♂ PK

HUMMINGBIRDS of the Madre de Dios watershed, Perú 3

Joseph A. Tobias, Philip Koch, Chris Merkord

Asociación para la Conservación de la Cuenca Amazónica / Amazon Conservation Association

Photos: J. Tobias (JT), P. Koch (PK), C. Merkord (CM); with contributions from R. Ahlman (RA), N. Athanas (NA), C. Bushell (CB), V. Claverie (VC), G. Gerra (GG), A. Grosset (AG), J. Harding (JHa), J. Hornbuckle (JHo), Dan Lane (DFL), D. Lebbin (DJL), J. Lowen (JL), S. Metildi (SM), Z. Peterson (ZP), F. Schmitt (FSchm), F. Schultz (FSchu), S. Sommazzi (SS), D. Stotz (DS), U. Valdez (UV), R. Williams (RW), S. Woods (SW). Produced by: R.B. Foster & T.S. Wachter, with support from Ellen Hyndman Fund and Moore Foundation.

© J.A. Tobias [EGI, Oxford University; joseph.tobias@zoo.ox.ac.uk], P. Koch, C. Merkord. Support from Amazon Conservation Association (ACCA) and Gordon & Betty Moore Foundation.

© ECCo, The Field Museum, Chicago, IL 60605 USA. [rrc@fieldmuseum.org] [http://fieldmuseum.org/ldtools]

Rapid Color Guide # 230 version 3 06/2012

A: Treeline/scrub/puna (> 3300 m). **B:** Montane forests and scrub (1000–3300 m). **C:** Foothill/submontane forests and scrub (400–1000 m). **D:** Lowland forest and grasslands (0–400 m)



20 *Klais guimeti pallidiventris*
B,C ♀ NA



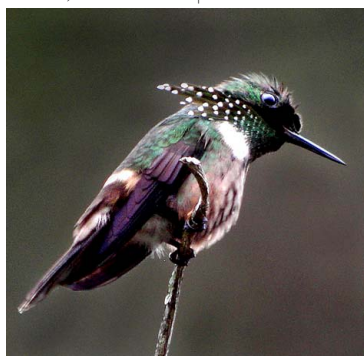
21 *Lophornis delattrei*
B,C,D ♂ PK



21 *Lophornis delattrei*
B,C,D ♂ JT



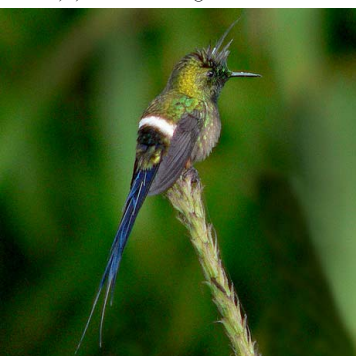
21 *Lophornis delattrei*
B,C,D ♀ RA



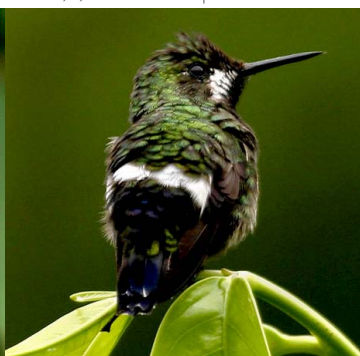
22 *Lophornis chalybeus chalybeus*
D SW



22 *Lophornis chalybeus verreauxii*
D ♂ Juv. JT



23 *Discosura popelairii*
B,C ♂ PK



23 *Discosura popelairii*
B,C ♀ JT



25 *Chlorostilbon mellisugus peruanus*
C,D ♂ JT



26 *Chlorostilbon aureoventris aureoventris*
D ♂ JT



26 *Chlorostilbon aureoventris aureoventris*
D ♀ JT



27 *Thalurania furcata boliviana*
C,D ♂ PK



27 *Thalurania furcata boliviana*
C,D ♂ JT



27 *Thalurania furcata boliviana*
C,D ♀ JT



29 *Hylocharis cyanus rostrata*
C,D ♂ DJL



29 *Hylocharis cyanus rostrata*
C,D ♂ Juv. JT

COLIBRÍES de la cuenca de Madre de Dios, Perú

Joseph A. Tobias, Philip Koch, Chris Merkord

Asociación para la Conservación de la Cuenca Amazónica / Amazon Conservation Association

Fotos de : J.Tobias (JT), P. Koch (PK), C. Merkord (CM); con contribuciones de R. Ahlman (RA), N. Athanas (NA), C. Bushell (CB), V. Claverie (VC), G. Gerra (GG), A. Grosset (AG), J. Harding (JHa), J. Hornbuckle (JHo), Dan Lane (DFL), D. Lebbin (DJL), J. Lowen (JL), S. Metildi (SM), Z. Peterson (ZP), F. Schmitt (FSchm), F. Schultz (FSchu), S. Sommazzi (SS), D. Stotz (DS), U. Valdez (UV), R. Williams (RW), S. Woods (SW). Producido por R.B. Foster & T.S. Wachter, con ayuda del Ellen Hyndman Fund y Moore Foundation.

© J.A. Tobias [EGI, Oxford University; joseph.tobias@zoo.ox.ac.uk], P. Koch, C. Merkord. Ayuda de la Asoc. para la Conserv. de la Cuenca Amazónica (ACCA) y del Moore Foundation.
 © ECCo, The Field Museum, Chicago, IL 60605 USA. [rrc@fieldmuseum.org] [http://fieldmuseum.org/Idtools] **Rapid Color Guide # 230** version 3 06/2012
A: Ceja de selva/matorral/puna (> 3300 m). **B:** Bosque montano/matorral (1000–3300 m). **C:** Piedemonte/bosque montano bajo/matorral (400–1000 m). **D:** Selva baja/pampas (0–400 m)



29 *Hylocharis cyanus rostrata*
C,D ♀ JT



30 *Chrysuronia oenone josephinae*
B,C,D ♂ PK



30 *Chrysuronia oenone josephinae*
B,C,D ♂ JT



30 *Chrysuronia oenone josephinae*
B,C,D ♀ JT



31 *Polytmus gainumbi thaumantias*
D ♂ JH



32 *Polytmus theresiae leucorrhous*
D ♂ JT



32 *Polytmus theresiae leucorrhous*
D ♀ JT



33 *Chrysolampis mosquitus*
D? ♂ JT



33 *Chrysolampis mosquitus*
D? ♂ JT



33 *Chrysolampis mosquitus*
D? ♀ JT



33 *Chrysolampis mosquitus*
D? ♀ JT



34 *Taphrospilus hypostictus*
B,C JT



34 *Taphrospilus hypostictus*
B,C JT



35 *Amazilia chionogaster chionogaster*
B ♂ JT



35 *Amazilia chionogaster hypoleucus*
B ♂ JT



37 *Amazilia lactea bartletti*
B,C,D ♂ JT

HUMMINGBIRDS of the Madre de Dios watershed, Perú 5

Joseph A. Tobias, Philip Koch, Chris Merkord

Asociación para la Conservación de la Cuenca Amazónica / Amazon Conservation Association

Photos: J. Tobias (JT), P. Koch (PK), C. Merkord (CM); with contributions from R. Ahlman (RA), N. Athanas (NA), C. Bushell (CB), V. Claverie (VC), G. Gerra (GG), A. Grosset (AG), J. Harding (JHa), J. Hornbuckle (JHo), Dan Lane (DFL), D. Lebbin (DJL), J. Lowen (JL), S. Metildi (SM), Z. Peterson (ZP), F. Schmitt (FSchm), F. Schultz (FSchu), S. Sommazzi (SS), D. Stotz (DS), U. Valdez (UV), R. Williams (RW), S. Woods (SW). Produced by: R.B. Foster & T.S. Wächter, with support from Ellen Hyndman Fund and Moore Foundation.

© J.A. Tobias [EGI, Oxford University; joseph.tobias@zoo.ox.ac.uk], P. Koch, C. Merkord. Support from Amazon Conservation Association (ACCA) and Gordon & Betty Moore Foundation. © ECCo, The Field Museum, Chicago, IL 60605 USA. [rrc@fieldmuseum.org] [http://fieldmuseum.org/ldtools] **Rapid Color Guide # 230 version 3 06/2012**

A: Treeline/scrub/puna (> 3300 m). B: Montane forests and scrub (1000–3300 m). C: Foothill/submontane forests and scrub (400–1000 m). D: Lowland forest and grasslands (0–400 m)



37 *Amazilia lactea bartletti*
B,C,D Juv. JT



38 *Adelomyia melanogenys*
B JT



38 *Adelomyia melanogenys*
B JT



39 *Phlogophilus harterti*
B PK



39 *Phlogophilus harterti*
B PK



40 *Heliodoxa branickii*
B,C Juv. DS



40 *Heliodoxa branickii*
B,C ♂ DS



41 *Heliodoxa schreibersii whitelyana*
B,C ♂ PK



41 *Heliodoxa schreibersii whitelyana*
B,C ♂ Juv. ZP



42 *Heliodoxa aurescens*
C,D ♀ PK



42 *Heliodoxa aurescens*
C,D ♀ JT



43 *Heliodoxa rubinoides aequatorialis*
B ♂ SM



43 *Heliodoxa rubinoides cervinigularis*
B ♂ CM



44 *Heliodoxa leadbeateri otero*
B,C ♂ JT



44 *Heliodoxa leadbeateri otero*
B,C ♀ PK



44 *Heliodoxa leadbeateri otero*
B,C ♀ CB

COLIBRÍES de la cuenca de Madre de Dios, Perú

Joseph A. Tobias, Philip Koch, Chris Merkord

Asociación para la Conservación de la Cuenca Amazónica / Amazon Conservation Association

Fotos de : J.Tobias (JT), P. Koch (PK), C. Merkord (CM); con contribuciones de R. Ahlman (RA), N. Athanas (NA), C. Bushell (CB), V. Claverie (VC), G. Gerra (GG), A. Grosset (AG), J. Harding (JHa), J. Hornbuckle (JHo), Dan Lane (DFL), D. Lebbin (DJL), J. Lowen (JL), S. Metildi (SM), Z. Peterson (ZP), F. Schmitt (FSchm), F. Schultz (FSchu), S. Sommazzi (SS), D. Stotz (DS), U. Valdez (UV), R. Williams (RW), S. Woods (SW). Producido por R.B. Foster & T.S. Wachter, con ayuda del Ellen Hyndman Fund y Moore Foundation.

© J.A. Tobias [EGI, Oxford University; joseph.tobias@zoo.ox.ac.uk], P. Koch, C. Merkord. Ayuda de la Asoc. para la Conserv. de la Cuenca Amazónica (ACCA) y del Moore Foundation.
 © ECCo, The Field Museum, Chicago, IL 60605 USA. [rrc@fieldmuseum.org] [http://fieldmuseum.org/Idtools] **Rapid Color Guide # 230** version 3 06/2012

A: Ceja de selva/matorral/puna (> 3300 m). B: Bosque montano/matorral (1000–3300 m). C: Piedemonte/bosque montano bajo/matorral (400–1000 m). D: Selva baja/pampas (0–400 m)



45 *Boissonneaua matthewsii*
B ♂ RW



45 *Boissonneaua matthewsii*
B ♀ GG/SS



46 *Aglaeactis cupripennis caumatonotus*
A VC



46 *Aglaeactis cupripennis caumatonotus*
A JH



47 *Aglaeactis castelnaudii castelnaudii*
A GG/SS



48 *Oreotrochilus estella estella*
A ♂ JL



48 *Oreotrochilus estella estella*
A ♀ JT



49 *Lafresnaya lafresnayi rectirostris*
B ♂ VC



49 *Lafresnaya lafresnayi saul*
B ♀ RW



50 *Coeligena coeligena obscura*
B,C PK



50 *Coeligena coeligena obscura*
B,C JT



51 *Coeligena torquata omissa*
B,C ♂ CM



51 *Coeligena torquata omissa*
B,C ♀ CM



51 *Coeligena torquata inca*
B,C ♀ JT



52 *Coeligena violifer osculans*
B ♂ JT



52 *Coeligena violifer osculans*
B ♀ CM

HUMMINGBIRDS of the Madre de Dios watershed, Perú 7

Joseph A. Tobias, Philip Koch, Chris Merkord

Asociación para la Conservación de la Cuenca Amazónica / Amazon Conservation Association

Photos: J. Tobias (JT), P. Koch (PK), C. Merkord (CM); with contributions from R. Ahlman (RA), N. Athanas (NA), C. Bushell (CB), V. Claverie (VC), G. Gerra (GG), A. Grosset (AG), J. Harding (JHa), J. Hornbuckle (JHo), Dan Lane (DFL), D. Lebbin (DJL), J. Lowen (JL), S. Metildi (SM), Z. Peterson (ZP), F. Schmitt (FSchm), F. Schultz (FSchu), S. Sommazzi (SS), D. Stotz (DS), U. Valdez (UV), R. Williams (RW), S. Woods (SW). Produced by: R.B. Foster & T.S. Wächter, with support from Ellen Hyndman Fund and Moore Foundation.

© J.A. Tobias [EGI, Oxford University; joseph.tobias@zoo.ox.ac.uk], P. Koch, C. Merkord. Support from Amazon Conservation Association (ACCA) and Gordon & Betty Moore Foundation. © ECCO, The Field Museum, Chicago, IL 60605 USA. [rrc@fieldmuseum.org] [http://fieldmuseum.org/ldtools] **Rapid Color Guide # 230** version 3 06/2012

A: Treeline/scrub/puna (> 3300 m). **B:** Montane forests and scrub (1000–3300 m). **C:** Foothill/submontane forests and scrub (400–1000 m). **D:** Lowland forest and grasslands (0–400 m)



53 *Ensifera ensifera* **53** *Ensifera ensifera* **54** *Pterophanes cyanopterus peruvianus* **54** *Pterophanes cyanopterus peruvianus*
A,B ♂ RW A,B ♀ RW A,B ♂ JT A,B ♂ RA



54 *Pterophanes cyanopterus peruvianus* **54** *Pterophanes cyanopterus peruvianus* **55** *Patagona gigas peruviana* **55** *Patagona gigas peruviana*
A,B ♂ Juv. JT A,B ♀ JT A ♀ JT A ♀ JT



56 *Helianthus amethysticollis amethysticollis* **56** *Helianthus amethysticollis amethysticollis* **57** *Eriocnemis luciani sapphiropygia* **57** *Eriocnemis luciani sapphiropygia*
A,B ♂ JT A,B ♀ JT A ♂ JT A ♂ JT



58 *Haplophaidia assimilis assimilis* **58** *Haplophaidia assimilis assimilis* **59** *Ocreatus underwoodii addae* **59** *Ocreatus underwoodii addae*
B,C JT B,C JT B,C ♂ RW B,C ♀ JT

Joseph A. Tobias, Philip Koch, Chris Merkord

Asociación para la Conservación de la Cuenca Amazónica / Amazon Conservation Association

Fotos de : J.Tobias (JT), P. Koch (PK), C. Merkord (CM); con contribuciones de R. Ahlman (RA), N. Athanas (NA), C. Bushell (CB), V. Claverie (VC), G. Gerra (GG), A. Grosset (AG), J. Harding (JHa), J. Hornbuckle (JHo), Dan Lane (DFL), D. Lebbin (DJL), J. Lowen (JL), S. Metildi (SM), Z. Peterson (ZP), F. Schmitt (FSchm), F. Schultz (FSchu), S. Sommazzi (SS), D. Stotz (DS), U. Valdez (UV), R. Williams (RW), S. Woods (SW). Producido por R.B. Foster & T.S. Wachter, con ayuda del Ellen Hyndman Fund y Moore Foundation.

© J.A. Tobias [EGL, Oxford University; joseph.tobias@zoo.ox.ac.uk], P. Koch, C. Merkord. Ayuda de la Asoc. de la Conserv. de la Cuenca Amazónica (ACCA) y del Moore Foundation.
 © ECCo, The Field Museum, Chicago, IL 60605 USA. [rrc@fieldmuseum.org] [http://fieldmuseum.org/Idtools] **Rapid Color Guide # 230** version 3 06/2012

A: Ceja de selva/matorral/puna (> 3300 m). B: Bosque montano/matorral (1000–3300 m). C: Piedemonte/bosque montano bajo/matorral (400–1000 m). D: Selva baja/pampas (0–400 m)



60 *Lesbia nuna nuna*
A,B ♂ GG/SS



60 *Lesbia nuna pallidiventris*
A,B ♀ JT



61 *Ramphomicron microrhynchum albiventris*
A ♂ VC



61 *Ramphomicron microrhynchum albiventris*
A ♀ VC



62 *Oreonympha nobilis*
A ♂ JT



62 *Oreonympha nobilis*
A ♀ JT



63 *Metallura tyrianthina smaragdinicollis*
A,B ♂ UV



63 *Metallura tyrianthina smaragdinicollis*
A,B ♀ JT



64 *Metallura aeneocauda*
A,B ♂ JT



64 *Metallura aeneocauda*
A,B ♀ JT



65 *Chalcostigma ruficeps*
B ♂ JT



65 *Chalcostigma ruficeps*
B ♀ RW



65 *Chalcostigma ruficeps*
B ♀ DFL



66 *Chalcostigma olivaceum pallens*
A ♂ FSchm



67 *Chalcostigma stanleyi vulcani*
A ♂ JT



67 *Chalcostigma stanleyi vulcani*
A ♀ JT

HUMMINGBIRDS of the Madre de Dios watershed, Perú 9

Joseph A. Tobias, Philip Koch, Chris Merkord

Asociación para la Conservación de la Cuenca Amazónica / Amazon Conservation Association

Photos: J. Tobias (JT), P. Koch (PK), C. Merkord (CM); with contributions from R. Ahlman (RA), N. Athanas (NA), C. Bushell (CB), V. Claverie (VC), G. Gerra (GG), A. Grosset (AG), J. Harding (JHa), J. Hornbuckle (JHo), Dan Lane (DfL), D. Lebbin (DJL), J. Lowen (JL), S. Metildi (SM), Z. Peterson (ZP), F. Schmitt (FSchm), F. Schultz (FSchu), S. Sommazzi (SS), D. Stotz (DS), U. Valdez (UV), R. Williams (RW), S. Woods (SW). Produced by: R.B. Foster & T.S. Wachter, with support from Ellen Hyndman Fund and Moore Foundation.

© J.A. Tobias [EGI, Oxford University; joseph.tobias@zoo.ox.ac.uk], P. Koch, C. Merkord. Support from Amazon Conservation Association (ACCA) and Gordon & Betty Moore Foundation. © ECCO, The Field Museum, Chicago, IL 60605 USA. [rrc@fieldmuseum.org] [http://fieldmuseum.org/ldtools] **Rapid Color Guide # 230** version 3 06/2012

A: Treeline/scrub/puna (> 3300 m). **B:** Montane forests and scrub (1000–3300 m). **C:** Foothill/submontane forests and scrub (400–1000 m). **D:** Lowland forest and grasslands (0–400 m)



68 *Aglaiocercus kingi smaragdinus*
B ♂ RW



68 *Aglaiocercus kingi smaragdinus*
B ♀ PK



69 *Schistes geoffroyi geoffroyi*
B ♀ RW



69 *Schistes geoffroyi geoffroyi*
B,C ♀ CM



69 *Schistes geoffroyi geoffroyi*
B,C Juv. CM



70 *Heliothryx auritus auriculata*
C,D ♂ PK



70 *Heliothryx auritus auriculata*
C,D ♀ JT



71 *Heliomaster longirostris longirostris*
C,D ♂ JT



71 *Heliomaster longirostris longirostris*
C,D PK



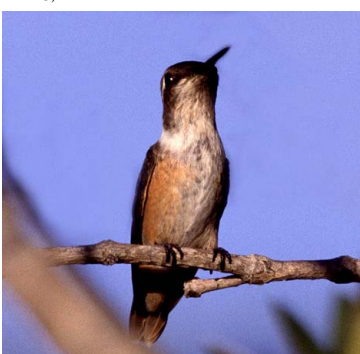
72 *Calliphlox amethystina*
B,C,D ♂ PK



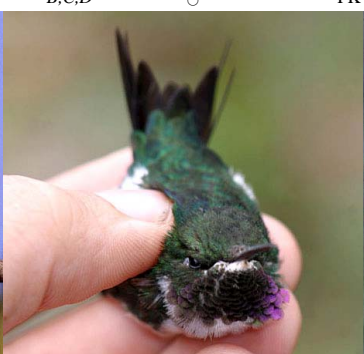
72 *Calliphlox amethystina*
B,C,D ♂ NA



72 *Calliphlox amethystina*
B,C,D ♀ JT



72 *Calliphlox amethystina*
B,C,D ♀ JT



73 *Chaetocercus mulsant*
B,C ♂ CM



73 *Chaetocercus mulsant*
B,C ♂ JHa



73 *Chaetocercus mulsant*
B,C ♀ JT

Altitudinal distribution of HUMMINGBIRDS/COLIBRÍES in the Madre de Dios watershed

A: Treeline/scrub/puna (> 3300 m).

B: Montane forest and scrub (1000–3300 m).

C: Foothill/submontane forest and scrub (400–1000 m).

D: Lowland forest and grasslands (0–400 m)

| No. | Nombre científico | Nombre inglés | A | B | C | D |
|-----|---|------------------------------|---|---|---|---|
| 1 | <i>Eutoxeres condamini gracilis</i> | Buff-tailed Sicklebill | | • | • | |
| 2 | <i>Glaucis hirsutus hirsutus</i> | Rufous-breasted Hermit | | • | • | • |
| 3 | <i>Threnetes leucurus rufigastra</i> | Pale-tailed Barbthroat | | | • | • |
| 4 | <i>Phaethornis ruber ruber</i> | Reddish Hermit | | | | • |
| 5 | <i>Phaethornis stuarti</i> | White-browed Hermit | | • | • | |
| 6 | <i>Phaethornis hispidus</i> | White-bearded Hermit | | | • | • |
| 7 | <i>Phaethornis guy apicalis</i> | Green Hermit | | • | • | |
| 8 | <i>Phaethornis koepckeae</i> | Koepcke's Hermit | | • | • | |
| 9 | <i>Phaethornis philippii</i> | Needle-billed Hermit | | | | • |
| 10 | <i>Phaethornis malaris</i> | Great-billed Hermit | | | | • |
| 11 | <i>Doryfera ludovicae</i> | Green-fronted Lancebill | | • | | |
| 12 | <i>Doryfera johannae</i> | Blue-fronted Lancebill | | • | | |
| 13 | <i>Campylopterus largipennis aequatorialis</i> | Gray-breasted Sabrewing | | | • | • |
| 14 | <i>Eupetomena macroura macroura</i> | Swallow-tailed Hummingbird | | | | • |
| 15 | <i>Florisuga mellivora</i> | White-necked Jacobin | | • | • | • |
| 16 | <i>Colibri delphinae</i> | Brown Violet-ear | | • | • | |
| 17 | <i>Colibri thalassinus</i> | Green Violet-ear | | • | • | |
| 18 | <i>Colibri coruscans</i> | Sparkling Violet-ear | • | • | • | |
| 19 | <i>Anthracothorax nigricollis</i> | Black-throated Mango | | | • | • |
| 20 | <i>Klais guimeti pallidiventris</i> | Violet-headed Hummingbird | | • | • | |
| 21 | <i>Lophornis delattrei</i> | Rufous-crested Coquette | | • | • | • |
| 22 | <i>Lophornis chalybeus verreauxii</i> | Festive Coquette | | | | • |
| 23 | <i>Discosura popelairii</i> | Wire-crested Thorntail | | • | • | |
| 24 | <i>Discosura langsdorffi</i> | Black-bellied Thorntail | | | | • |
| 25 | <i>Chlorostilbon mellisugus peruanus</i> | Blue-tailed Emerald | | | • | • |
| 26 | <i>Chlorostilbon aureoventris aureoventris</i> | Glittering-bellied Emerald | | | • | • |
| 27 | <i>Thalurania furcata boliviana</i> | Fork-tailed Woodnymph | | | • | • |
| 28 | <i>Hylocharis sapphirina</i> | Rufous-throated Sapphire | | | | • |
| 29 | <i>Hylocharis cyanus rostrata</i> | White-chinned Sapphire | | | • | • |
| 30 | <i>Chrysuronia oenone josephinae</i> | Golden-tailed Sapphire | | • | • | • |
| 31 | <i>Polytmus gainumbi thaumantias</i> | White-tailed Goldenthrout | | | | • |
| 32 | <i>Polytmus theresiae leucorrhous</i> | Green-tailed Goldenthrout | | | | • |
| 33 | <i>Chrysolampis mosquitos</i> | Ruby-topaz Hummingbird | | | | ? |
| 34 | <i>Taphropilus hypostictus</i> | Many-spotted Hummingbird | | • | • | |
| 35 | <i>Amazilia chionogaster</i> | White-bellied Hummingbird | | • | | |
| 36 | <i>Amazilia viridicauda</i> | Green-and-white Hummingbird | | • | | |
| 37 | <i>Amazilia lactea bartletti</i> | Sapphire-spangled Emerald | | • | • | • |
| 38 | <i>Adelomyia melanogenys</i> | Speckled Hummingbird | | • | | |
| 39 | <i>Phlogophilus harterti</i> | Peruvian Piedtail | | • | | |
| 40 | <i>Heliodoxa branickii</i> | Rufous-webbed Brilliant | | • | • | |
| 41 | <i>Heliodoxa schreibersii whitelyana</i> | Black-throated Brilliant | | • | • | |
| 42 | <i>Heliodoxa aurescens</i> | Gould's Jewelfront | | | • | • |
| 43 | <i>Heliodoxa rubinoides aequatorialis</i> | Fawn-breasted Brilliant | | • | | |
| 44 | <i>Heliodoxa leadbeateri otero</i> | Violet-fronted Brilliant | | • | • | |
| 45 | <i>Boissonneaua matthewsii</i> | Chestnut-breasted Coronet | | • | | |
| 46 | <i>Aglaeactis cupripennis caumatonotus</i> | Shining Sunbeam | • | | | |
| 47 | <i>Aglaeactis castelnaudii castelnaudii</i> | White-tufted Sunbeam | • | | | |
| 48 | <i>Oreotrochilus estella</i> | Andean Hillstar | • | | | |
| 49 | <i>Lafresnaya lafresnayi</i> | Mountain Velvetbreast | | • | | |
| 50 | <i>Coeligena coeligena obscura</i> | Bronzy Inca | | • | • | |
| 51 | <i>Coeligena torquata omissa</i> | Collared Inca | | • | • | |
| 52 | <i>Coeligena violifer ocellans</i> | Violet-throated Starfrontlet | | • | | |
| 53 | <i>Ensifera ensifera</i> | Sword-billed Hummingbird | • | • | | |
| 54 | <i>Pterophanes cyanopterus peruvianus</i> | Great Sapphirewing | • | • | | |
| 55 | <i>Patagona gigas peruviana</i> | Giant Hummingbird | • | | | |
| 56 | <i>Helianthus amethysticollis amethysticollis</i> | Amethyst-throated Sunangel | • | • | | |
| 57 | <i>Eriocnemis luciani sapphiropygia</i> | Sapphire-vented Puffleg | • | | | |
| 58 | <i>Haplophaidia assimilis assimilis</i> | Buff-thighed Puffleg | | • | • | |
| 59 | <i>Ocreatus underwoodii addae</i> | Booted Racket-tail | | • | • | |
| 60 | <i>Lesbia nuna</i> | Green-tailed Trainbearer | • | • | | |
| 61 | <i>Ramphomicron microrhynchum albiventre</i> | Purple-backed Thornbill | • | | | |
| 62 | <i>Oreonympha nobilis</i> | Bearded Mountaineer | • | | | |
| 63 | <i>Metallura tyrianthina smaragdinicollis</i> | Tyrian Metaltail | • | • | | |
| 64 | <i>Metallura aeneocauda</i> | Scaled Metaltail | • | • | | |
| 65 | <i>Chalcostigma ruficeps</i> | Rufous-capped Thornbill | | • | | |
| 66 | <i>Chalcostigma olivaceum</i> | Olivaceous Thornbill | • | | | |
| 67 | <i>Chalcostigma stanleyi</i> | Blue-mantled Thornbill | • | | | |
| 68 | <i>Aglaiocercus kingi</i> | Long-tailed Sylph | | • | | |
| 69 | <i>Schistes geoffroyi</i> | Wedge-billed Hummingbird | | • | • | |
| 70 | <i>Heliothryx auritus</i> | Black-eared Fairy | | | • | • |
| 71 | <i>Heliothryx longirostris</i> | Long-billed Starthroat | | | • | • |
| 72 | <i>Calliphlox amethystina</i> | Amethyst Woodstar | | • | • | • |
| 73 | <i>Chaetocercus mulsant</i> | White-bellied Woodstar | | • | • | |