








Route Option

-  Red
-  Red (roundabout option)

LEGEND

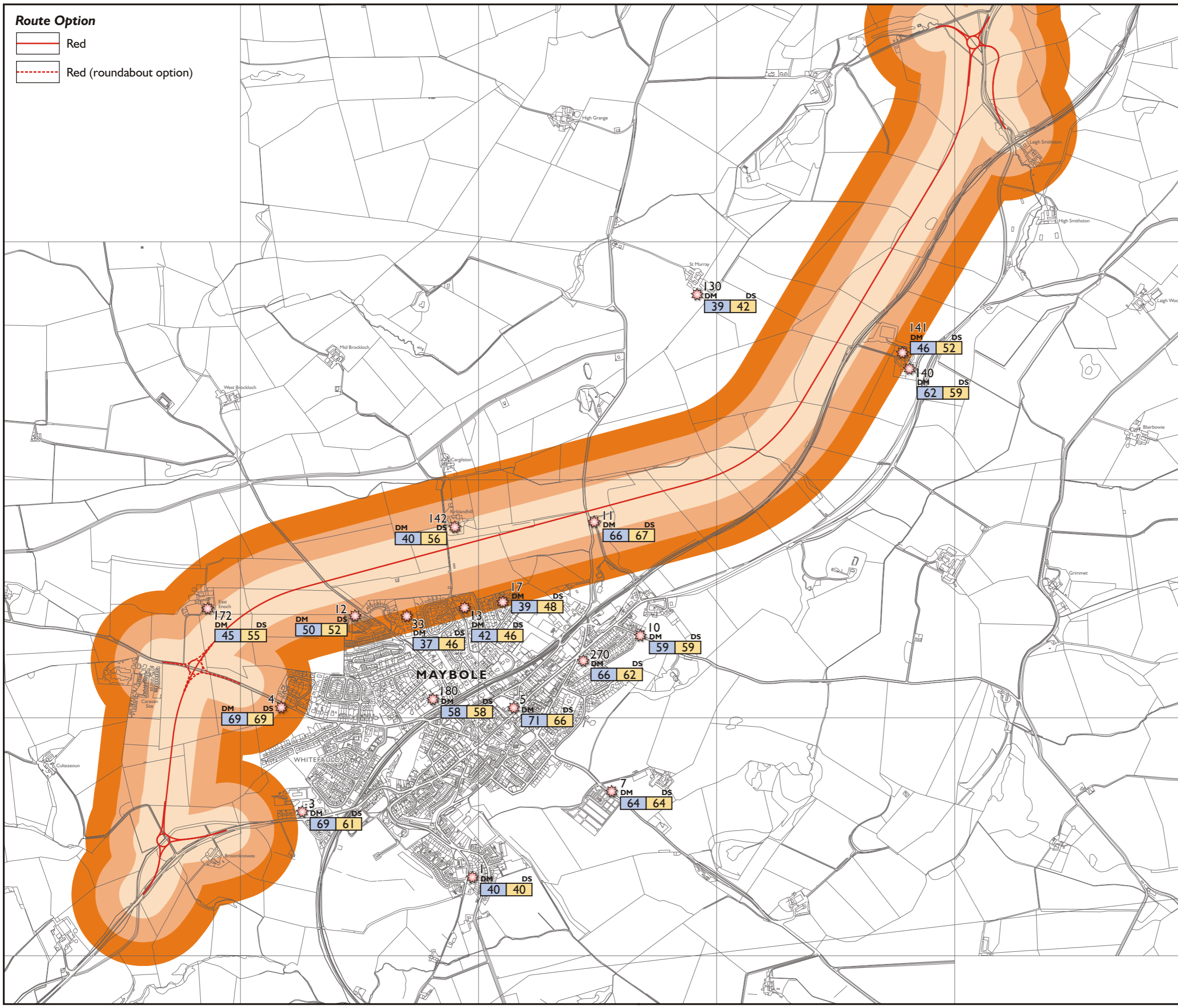
-  100m Buffer
-  200m Buffer
-  300m Buffer
-  Selected receiver location
-  Receiver ID


Predicted Noise Levels

Predicted Noise Levels (dB LA10,18h) in the opening year for the Do-Minimum (DM) and the Do-Something (DS) scenarios

Receiver Locations

- 1 Allan's Hill
- 3 Point Garry
- 4 Culzean Road
- 5 The Castle, A77
- 7 Crosshill Road
- 10 Kirkmichael Road T-Junction
- 11 B7024 Overbridge
- 12 Gardenrose Path
- 13 Kirklandhill Path
- 17 Elms Crescent
- 33 Gardenrose Primary School
- 130 St Murray (SE)
- 140 Nether Culzean (SE)
- 141 Nether Culzean (NW)
- 142 Kirklandhill
- 172 East Enoch
- 180 Fairknowe Care Home
- 270 St Cuthberts RC Primary School




 0 500 metres

This map is reproduced from Ordnance Survey material with the permission of Ordnance Survey on behalf of the Controller of Her Majesty's Stationery Office © Crown Copyright.
 Unauthorised reproduction infringes Crown Copyright and may lead to prosecution or civil proceedings. Crown Copyright. All rights reserved Scottish Executive 100020540 2006.

CLIENT



An agency of SCOTTISH EXECUTIVE

ATKINS
 Atkins Ltd
 Planning Landscape & Heritage
 5th Floor, 200 Broomielaw
 Glasgow G1 4RU
 © ATKINS

Tel: 0141 220 2000
Fax: 0141 220 2001

PROJECT

A77 MAYBOLE

DRAWING TITLE

**SELECTED RECEIVER LOCATIONS AND NOISE BUFFERS
RED ROUTE OPTION**

SCALE 1:15000 @A3	DRAWN CDM	DATE Sept 2007
----------------------	--------------	-------------------

DRAWING NO

5028091_NOI_001