



PRODUCT | Guide



G-Technology, Inc.
A Fisker Company



G-Technology Inc., a Fabrik company, manufactures the industry's most comprehensive line of external disk storage solutions designed for professional content creation applications. Our USB, FireWire, eSATA, and Fibre Channel systems support all levels of audio/video production. G-Tech's focus on technology, quality and design has resulted in disk storage solutions with unmatched performance, reliability and style.

G-Technology Inc.
Performance. Style. Reliability.

www.g-technology.com

G | ADVANTAGE



G-SPEED is designed to support uncompressed SD and HD editing with professional content creation applications such as Final Cut Studio 2.



Heat is death to hard drives so every G-TECH product incorporates a high-performance cooling system to ensure reliable operation and data integrity.

Why should you consider using a G-Tech product? It's simple. You won't find a better made, better performing, better looking, or more reliable external disk storage system anywhere. We build our products from the highest quality components — aircraft grade aluminum and the highest quality electronics and hard disk drives. The best components insure a superior storage solution.

We believe in performance. That's why every one of our storage solutions must pass our rigorous test procedures before it's shipped. Our G-SPEED, G-SPEED eS and G-RAID units are designed to support professional multi-stream uncompressed video editing environments and meet guaranteed real-time video playback specifications.

We also believe in reliability. And the key to ensuring reliable operation is to use the best components and then keep them cool. That's why every G-Tech external storage solution features a built-in cooling system.

We know we've built the best external storage systems out there. Once you use a G-Tech product, we're sure you'll agree.

G-TECH products are made from the highest quality components and are machined to exact specifications.





G SPEED

High-Performance Storage Solutions for SD and HD Production

G-SPEED is the perfect solution for multi-stream, multi-user SD and uncompressed HD work flows - including real-time playback of 2K DPX sequences. G-SPEED features 4Gbit Fibre Channel connectivity and is available in a compact desktop enclosure with 6 Hitachi® SATAII drives (G-SPEED) and dual channel, 2U or 3U rackmount enclosures (G-SPEED XL12/XL16) with 12 or 16 Hitachi SATAII drives.



G-SPEED can be configured as a JBOD, RAID 0, 1, 3, 5 or RAID 6. This flexibility enables the system to be tuned to the required



G-SPEED Web GUI

level of performance and fault-tolerance necessary to fully support your application. G-SPEED's built-in Web GUI is used to configure and monitor the status of the system including power supply voltage, fan RPM and the temperature of the RAID controller & hard drives.



G-SPEED can be configured and monitored via the system's front panel LCD.

Now up to 24TB!

G-SPEED features hot-swappable 7200 RPM, SATA II disk drive modules each with up to 32MB of cache.



SD HD 2K

G-SPEED supports multi-stream SD, HD and 2K film resolutions and is compatible with the leading editing systems for Mac and PC.

G-SPEED XL12/16 feature dual channel 4Gbit connectivity and utilize SFP to LC optical transceivers. The system connects to your workstation or network using thin optical cabling.



Ethernet Port

Dual, redundant 460W power supplies

SAN READY!



MAC

PC

Fibre Channel

SPECIFICATIONS (G-SPEED):

Disk Drives: (6) Hot-swappable, Hitachi 7200 RPM SATA II drives with up to 32MB cache
 Controller: Hardware RAID 0, 1, 3, 5, 6 and JBOD
 Interface: 4Gbit Fibre Channel, SFP to LC
 Size: (LxWxH) 11.3" x 6.5" x 13.6"/235 x 130 x 73mm
 Weight: 35 lbs/16 kg

SPECIFICATIONS (G-SPEED XL12/16):

Disk Drives: (12 or 16) Hot-swappable, Hitachi 7200 RPM SATA II drives with up to 32MB cache
 Controller: Hardware RAID 0, 1, 3, 5, 6 and JBOD
 Interface: Dual 4Gbit Fibre Channel, SFP to LC
 Size: (LxWxH) 17.5" x 19.5" x 5.25"/446x495x133mm
 Weight: 73 lbs/33 kg

SYSTEM REQUIREMENTS:

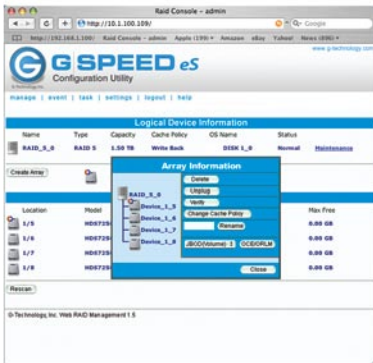
Fibre Channel equipped computer or switch, Ethernet port and Web Browser for GUI connection



G-SPEED^{eS}

Cost Effective eSATA RAID Storage for SD/HD Production

G-SPEED^{eS} from G-Tech provides professional content creators with outstanding performance, high storage capacity and optional fail-safe operation at an unprecedented low cost per gigabyte. The compact G-SPEED^{eS} sports a 3Gbit eSATA interface and features Hitachi 7200 RPM, SATA II hard drives. When used with the optional G-Tech RAID controller, a single G-SPEED^{eS} in performance mode (RAID 0) easily supports uncompressed 8-bit, 1080/60i HD video capture and playback. Two G-SPEED^{eS} units in fail-safe mode (RAID 5) support 10-bit, 1080i and more! As many as four G-SPEED^{eS} enclosures can be attached to a



G-SPEED^{eS} is configured and monitored through a web based GUI

single workstation to support up to 24TB of storage with speeds in excess of 600MB/sec! Storage for multi-stream uncompressed SD and HD production has never been easier or more affordable!

(4) Hot swappable drive modules

Removable "smart" cooling fan to ensure quiet, reliable operation and data integrity

Space-saving enclosure



Internal 200W AC power supply with ultra-quiet "smart" fan

eSATA port for high-speed data transfers up to 250 MB/sec per enclosure



The optional 4-port SATA PCIe RAID controller supports RAID 0, 1, 5 and JBOD configurations. Up to (4) G-SPEED^{eS} enclosures can be attached to each workstation for performance well over 600 MB/sec! G-SPEED^{eS} can also be attached to third-party port multiplier aware host bus adapters.

Up to 24TB



MAC

PC

eSATA

SPECIFICATIONS

Disk Drives: (4) Hot-swappable, Hitachi 7200 RPM SATA II drives with up to 32MB cache
 Interface: (1) eSATA
 Optional Controller: 4 port eSATA PCIe supporting RAID 0, 1, 5, JBOD
 Size: (LxWxH) 8.25" x 4.9" x 6.5" / 210 x 124 x 166 mm
 Weight: 12.5 lbs / 5.7 kg

SYSTEM REQUIREMENTS

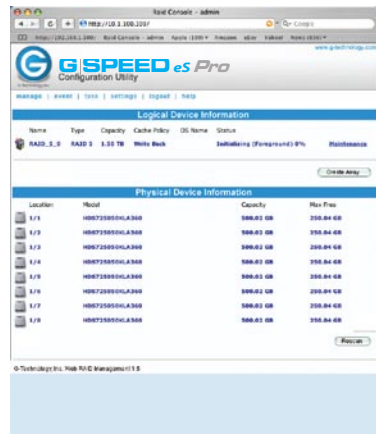
G-Tech RAID Controller: Mac Pro (Intel processor) or PC with available PCIe x4 slot, Mac OS X 10.3.x or higher, Windows 2000/XP/Vista. G-SPEED^{eS} is compatible with port multiplier aware adapter cards



G-SPEED *es Pro*

High-Performance, Fail-Safe RAID Solutions for HD/2K Production

The new G-SPEED *es Pro* from G-Tech provides professional content creators Fibre-Channel like performance for demanding post production applications at a fraction of the cost. The compact G-SPEED *es Pro* features mini-SAS connectivity to a high performance PCIe x8 RAID controller that supports RAID levels 0,1,3,5 and RAID 6. A single G-SPEED *es Pro* enclosure with four 7200 RPM, SATA II drives in RAID 0 mode supports multi-stream ProRes 422 HQ playback and a single-stream of uncompressed 10-bit HD.



G-SPEED *es Pro* is configured and monitored through a web based GUI

Two units with eight drives in protected mode (RAID 3 or 5) supports two simultaneous streams of uncompressed HD or a single 2K DPX sequence. G-SPEED *es Pro* is simply the most affordable, fail-safe RAID storage solution designed specifically for high-end post.

(4) Hot swappable drive modules

Removable "smart" cooling fan to ensure quiet, reliable operation and data integrity

Space-saving enclosure



Internal 200W AC power supply with ultra-quiet "smart" fan

mini-SAS port for high-speed data transfers



The new G-Tech PCIe x8 RAID controller supports RAID levels 0, 1, 3, 5 and RAID 6 configurations. Two G-SPEED *es Pro* enclosures can be attached to the RAID controller for up to 12TB of storage capacity and performance up to 675 MB/sec!

Up to 12TB



MAC PC mini-SAS

SPECIFICATIONS

Disk Drives: (4) Hot-swappable, Hitachi 7200 RPM SATA II drives with up to 32MB cache
 Interface: (1) PCIe x8 mini-SAS
 RAID Controller: 2-port PCIe x8 with support for RAID levels 0, 1, 3, 5 & 6
 Size: (LxWxH) 8.25" x 4.9" x 6.5" / 210 x 124 x 166 mm
 Weight: 12.5 lbs / 5.7 kg

SYSTEM REQUIREMENTS

G-Tech RAID Controller:
 Mac Pro (Intel processor) or PC with available PCIe x8 slot, Mac OS X 10.3.x or higher, Windows 2000/XP/Vista.



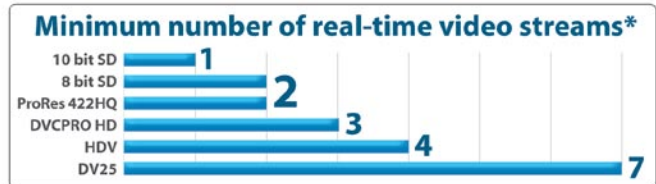
G RAID₂

Professional RAID 0 Storage Solutions with Triple Interface

G-RAID₂ is the industry standard in high-performance FireWire 800 RAID storage. G-RAID₂ is specifically designed to support professional content creation applications including audio/video editing, 2D/3D animation and digital imaging. G-RAID₂ features a triple interface — FireWire 400, FireWire 800 and USB 2.0 ports — for universal connectivity and the latest Hitachi 7200 RPM SATA II drives mated to a high-speed hardware RAID 0 controller. G-RAID₂ supports the playback of multiple layers of video in real-time and offers unmatched performance and reliability.



Awarded  by MacWorld



*when attached to a FireWire 800 port

G-RAID₂ is specifically designed to support professional multi-stream video editing applications like Apple Final Cut Pro and Adobe Premiere Pro.

G-RAID₂ is equipped with a small and quiet cooling fan to ensure reliable operation and data integrity.



FireWire 400, FireWire 800 and USB 2.0 ports for universal connectivity to Mac's or PC's



MAC

PC

FW

USB

SPECIFICATIONS:

Disk Drives: (2) Hitachi 7200 RPM SATA II drives with up to 32MB cache
Controller: Hardware RAID 0 - Oxford 924
Interface: (1) FW 400, (2) FW 800 and (1) USB 2.0
Size: (LxWxH) 9.25" x 5.125" x 2.875"
235 x 130 x 73 mm
Weight: 3.85 lbs/1.75 kg

SYSTEM REQUIREMENTS:

FireWire 800 / USB 2.0 Operation:
Mac OS X 10.3.x or higher,
Windows 2000/XP/Vista
FireWire 400 Operation:
Mac OS 9.2 or higher,
Windows 2000/XP/Vista



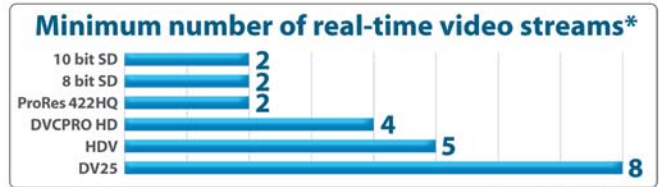
G RAID₃

Professional RAID 0 Storage Solutions with Quad Interface

The all-new G-RAID₃ from G-Tech now features a quad interface (3 Gbit eSATA, FireWire 400/800 & USB 2.0) for universal connectivity and industry leading performance. It uses the latest generation Oxford 936 chipset and supports the simultaneous playback of multiple layers of HDV/DVCPRO HD/



ProRes 422 HQ/SD with the leading video editing applications including Final Cut Pro. G-RAID₃ is capable of delivering over 200 MB/second transfer rate when connected to any Mac or PC via eSATA. A new soft on/off electronic power switch and "smart" fan roundout the new upgraded feature set.



*when attached via eSATA

G-RAID₃ is specifically designed to support professional multi-stream video editing applications like Apple Final Cut Pro and Adobe Premiere Pro.

G-RAID₃ is equipped with a thermo-regulated, "smart" fan to ensure quiet and reliable operation and data integrity.



New 3Gbit eSATA port for transfer speeds of over 200MB/sec!

Soft touch power switch



SPECIFICATIONS:

Disk Drives: (2) Hitachi 7200 RPM SATA II drives with up to 32MB cache
 Controller: Hardware RAID 0 - Oxford 936
 Interface: (1) eSATA, (1) FW400 (via included cable), (2) FW800 & (1) USB 2.0
 Size: (LxWxH) 9.25"x5.125"x2.875" 235x130x73 mm
 Weight: 3.85 lbs/1.75 kgtt

SYSTEM REQUIREMENTS:

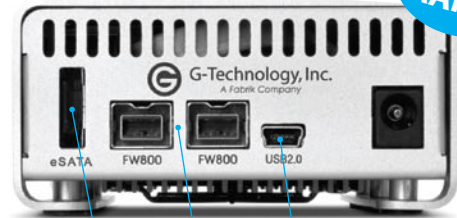
eSATA / FireWire 800 / USB 2.0 Operation:
 Mac OS X 10.3.x or higher,
 Windows 2000/XP/Vista
 FireWire 400 Operation:
 Mac OS 9.2 or higher,
 Windows 2000/XP/Vista



G-RAID mini₂

Portable Storage Solutions with Quad-Interface and Selectable RAID 0 / RAID 1 Operation

The all-new G-RAID mini₂ from G-Tech now features both RAID 0 and fail-safe RAID 1 operation, and a high-speed quad interface. It is the ideal portable storage solution for safe-guarding content downloaded from professional tapeless video cameras. Production houses and creative studios will appreciate its small compact size and tough, all-aluminum enclosure, which make it perfect for capturing and editing on the go or while working on location. G-RAID mini₂ is capable of delivering an unprecedented 120+ MB/second transfer rate when used with eSATA in RAID 0. G-RAID mini₂ is FireWire bus-powered even when connected via eSATA



Now with
RAID 1

eSATA, FireWire 800 and USB 2.0 ports for universal connectivity to Mac's or PC's

G-RAID mini₂ is equipped with a small and quiet cooling fan to ensure reliable operation and data integrity.



Tapeless Workflow? Protect your content with G-RAID mini₂



Transfer content from solid state media to the G-RAID mini₂ for the ultimate data protection in the field

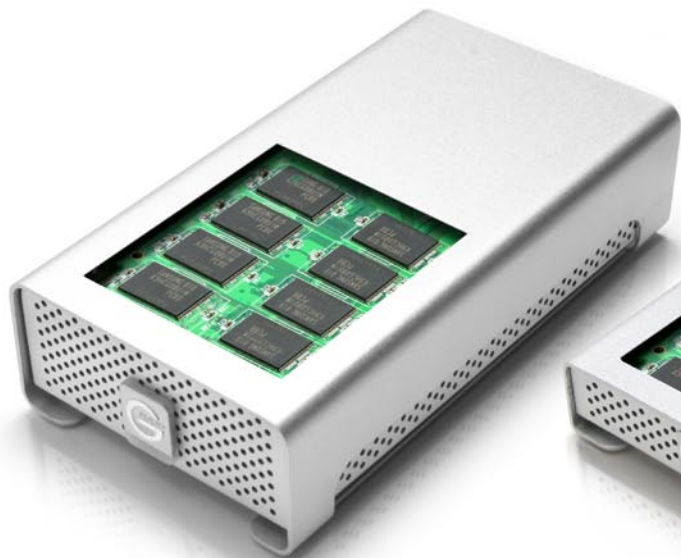


SPECIFICATIONS:

Disk Drives: (2) 5400 or 7200 RPM Hitachi SATA drives with up to 8MB cache
Controller: Hardware RAID 0/1 - Oxford 936DS
Interface: (1) eSATA, (2) FW 800 and (1) USB 2.0
Size: (LxWxH) 5.9" x 3.25" x 1.5" / 149 x 82.6 x 38 mm
Weight: 1.1 lbs/.5 kg

SYSTEM REQUIREMENTS:

eSATA / FireWire 800 / USB 2.0 Operation:
Mac OS X 10.3.x or higher,
Windows 2000/XP/Vista
FireWire 400 Operation:
Mac OS 9.2 or higher,
Windows 2000/XP/Vista



G RAID mini SSD

Solid State RAID for Extreme Performance and Protection

From blazing speed to rock-solid durability and data protection, nothing comes close to the new, two-drive, G-RAID mini SSD. Featuring a quad interface (eSATA, FireWire 400, FireWire 800 and USB 2.0), G-RAID mini SSD delivers up to 195 MB/sec data transfer rates when configured in RAID 0 mode. The system will support the playback of five simultaneous ProRes 422 HQ streams and a single stream of uncompressed HD when attached via eSATA. A simple user interface easily configures the unit to RAID 1 data mirroring for professional shooters using cameras such as the RED ONE, Panasonic P2 and Sony SxS who want to offload their footage to a redundant SSD-based system. The G-RAID mini SSD comes in 240GB or 500GB, with the latter holding over 5.5 hours of ProRes 422 footage! Perfect for the road, it is light, compact and FireWire bus-powered.



Solid State Drives use high-performance Flash Memory and have no moving parts

The SSD Advantage

High-Performance – Faster than a standard HDD

Faster seek time – .2ms vs 12ms for a HDD, perfect for multi-stream editing

Low power – cooler operation

Silent operation – perfect for audio editing

No moving parts – very reliable, can withstand 1500G shock

G DRIVE mini SSD

Rugged Solid State Drives for Demanding Applications

Extremely durable and compact, the new G-DRIVE mini SSD comes in 120GB and 250GB capacities, and features a triple interface (FireWire 400, FireWire 800 and USB 2.0) to provide fast access to HD video, audio, and other dense multimedia files. Data rates top 60MB/sec write and 75MB/sec read speeds when using FireWire 800. Weighing in at just 8.5 oz, G-DRIVE mini SSD can be literally thrown into a gear bag for “grab n’ go” ease. No external AC power supply is required as it is USB or FireWire bus-powered.



SPECIFICATIONS (G-RAID mini SSD):
Disk Drives: (2) Solid State Drives (SSD)
Controller: Oxford 936
Interface: eSATA/FW400/FW800/USB 2.0
Size: (LxWxH) 5.9" x 3.25" x 1.5" / 149 x 82.6 x 38 mm
Weight: 1.1 lbs / 5 kg

SPECIFICATIONS (G-DRIVE mini SSD):
Disk Drives: Solid State Drive (SSD)
Controller: Oxford 924
Interface: FW400/FW800/USB 2.0
Size: (LxWxH) 4.9375" x 3.1875" x .875" / 125 x 81 x 22mm
Weight: .55 lbs / .25 kg

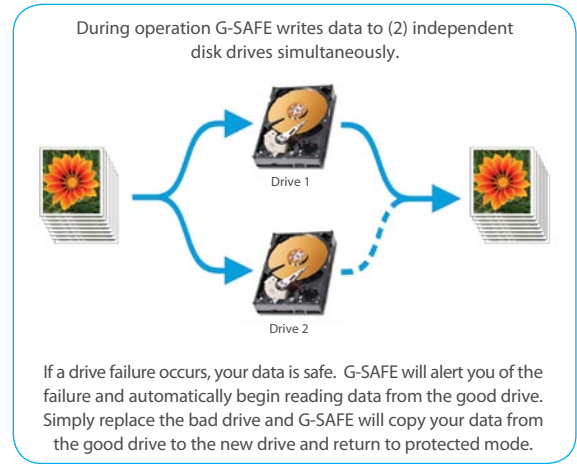
SYSTEM REQUIREMENTS:
eSATA/FireWire 800 / USB 2.0 Operation:
Mac OS X 10.3.x or higher, Windows 2000/XP/Vista
FireWire 400 Operation:
Mac OS 9.2 or higher,
Windows 2000/XP/Vista



G | SAFE

RAID 1 (Mirrored) Storage Solutions for Data Security

G-SAFE is the ideal storage solution to safeguard digital files downloaded from flash memory cards. G-SAFE offers the ultimate in peace of mind by simultaneously writing to two independent hard disk drives providing instant back up of files as you save them. And unlike single drive backup systems, if a drive failure occurs your data is safe and accessible. G-SAFE features (2) removable drive modules for easy replacement of disk drives and off-site backup of data, and includes FireWire 800 and USB 2.0 ports and a front panel LCD for system status and configuration.



Removable cooling fan to ensure reliable operation and data integrity

Internal AC power supply reduces cabling clutter

FireWire 800 and USB 2.0 ports for universal connectivity to Mac's or PC's



MAC

PC

FW

USB

SPECIFICATIONS

Disk Drives: (2) Hot-Swappable, Hitachi 7200 RPM SATA II drives with up to 32MB cache
Controller: Hardware RAID 1
Interface: (2) FireWire 800, (1) USB 2.0
Size: (LxWxH) 4" x 4.9" x 7.6" / 102 x 127 x 193mm
Weight: 10 lbs/4.5 kg

SYSTEM REQUIREMENTS

FireWire 800 / USB 2.0 Operation:
Mac OS X 10.3.x or higher,
Windows 2000/XP/Vista



G-DRIVE Q

Professional Strength Quad Interface Storage Solutions

G-DRIVE Q quad interface external storage systems offer the ultimate in flexibility by providing FireWire 400, FireWire 800, USB 2.0 and eSATA ports all in a single unit. G-DRIVE Q is the perfect high-performance solution for storage intensive applications including audio/video editing, digital photography, MP3 libraries and high-speed data back up. The system features a fan-less cooling system and the latest technology Hitachi 7200 RPM SATA II hard drives with up to 32 MB of cache.

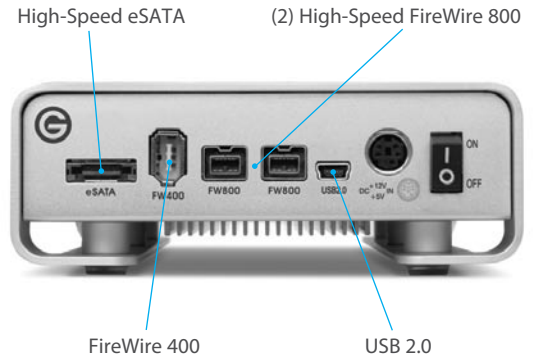


Recipient of the
MacWorld Editors' Choice Award

Awarded 
by MacWorld



High Performance for Demanding Applications



The industry's first high-performance quad interface storage system for Mac's and PC's.



G-DRIVE Q incorporates a unique "fan-less" cooling system designed to silently dissipate heat for superior reliability and data integrity.

SPECIFICATIONS:

Disk Drives: 7200 RPM SATA II drive with up to 32MB cache
Quad-Interface: (1) FireWire 400, (2) FireWire 800, (1) USB 2.0, (1) eSATA
Size: (LxWxH) 9.25" x 5.125" x 1.82"
235 x 130 x 46 mm
Weight: 2.6 lbs / 1.18 kg

SYSTEM REQUIREMENTS:

FireWire 400 Operation:
Mac OS 9.2 or higher,
Windows 2000/XP/Vista
FireWire 800 / USB 2.0 / eSATA Operation:
Mac OS X 10.3.x or higher,
Windows 2000/XP/Vista



Item	Qty	Unit Price	Total Price
Item 1	1	100.00	100.00
Item 2	2	50.00	100.00
Item 3	1	200.00	200.00
Item 4	1	100.00	100.00
Item 5	1	100.00	100.00



G-DRIVE mini

Ultra-Portable Storage Solutions for People on the Go!

G-DRIVE mini hard drives are the perfect storage solutions for people on the go. Weighing in at less than 9 oz., G-DRIVE mini is the ultra-portable and stylish way to travel with up to 500 GB of storage space for your important documents, MP3s, digital video and digital photo files. G-DRIVE mini is bus powered, eliminating the need to carry an external AC power supply. G-DRIVE mini features a fan-less cooling system and the latest technology 5400 or 7200 RPM hard drives with 8 MB of cache.



Awarded 
by MacWorld



SPECIFICATIONS:

Disk Drive: 5400 or 7200 RPM/8MB cache
Interface: (1) FireWire 800 / (1) FireWire 400 / (1) USB 2.0
Size: (LxWxH) 4.9375" x 3.1875" x .875" (500GB - 1")
125 x 81 x 22mm (500GB - 25.4mm)
Weight: .55 lbs / .25 kg

SYSTEM REQUIREMENTS:

FireWire 800 / USB 2.0 Operation:
Mac OS X 10.3.x or higher,
Windows 2000/XP/Vista
FireWire 400 Operation:
Mac OS 9.2 or higher,
Windows 2000/XP/Vista



Triple interface with FireWire 800,
FireWire 400 and USB 2.0 ports



G-DRIVE mini incorporates a unique "fan-less" cooling system designed to silently dissipate heat for superior reliability and data integrity.



To keep G-DRIVE mini safe when on the road, a protective leather carrying case is included.



G-Technology Inc.
a Fabrik company

Performance. Style. Reliability.

tel 310.449.4599
www.g-technology.com