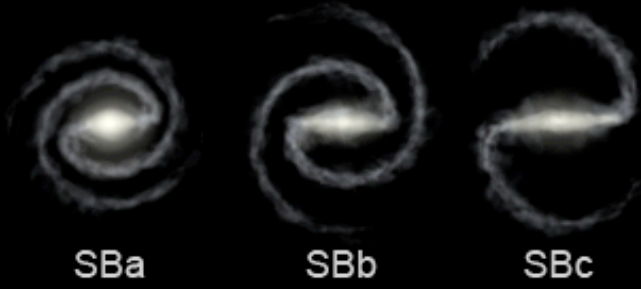
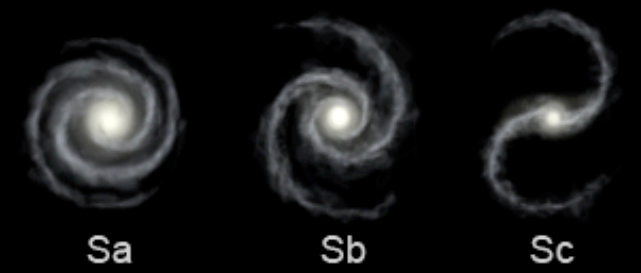


Galaxies

Astro 322
Winter 2009
Feb. 4



Hubble “tuning fork”
sequence



M81, Sab (Gendler)



M31, Sb



M101, Scd

MI04,
Sombrero
Sa

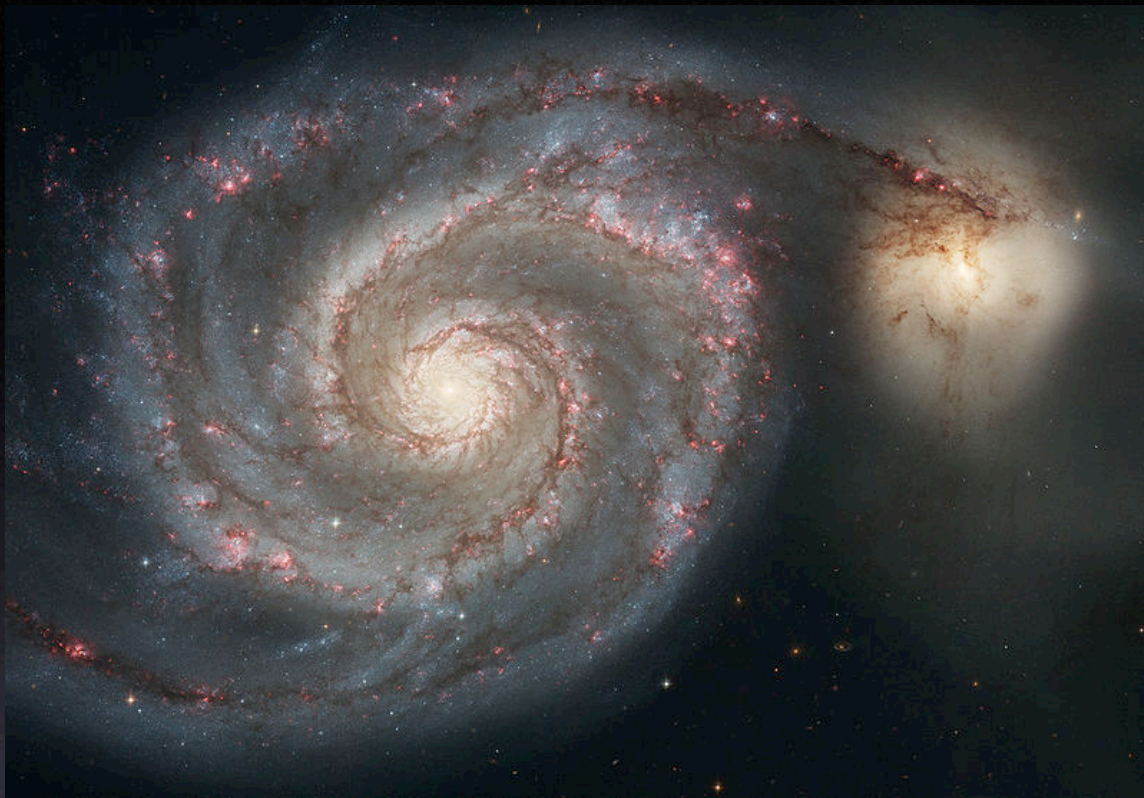




NGC 1300, SBbc



NGC 4414, Sc

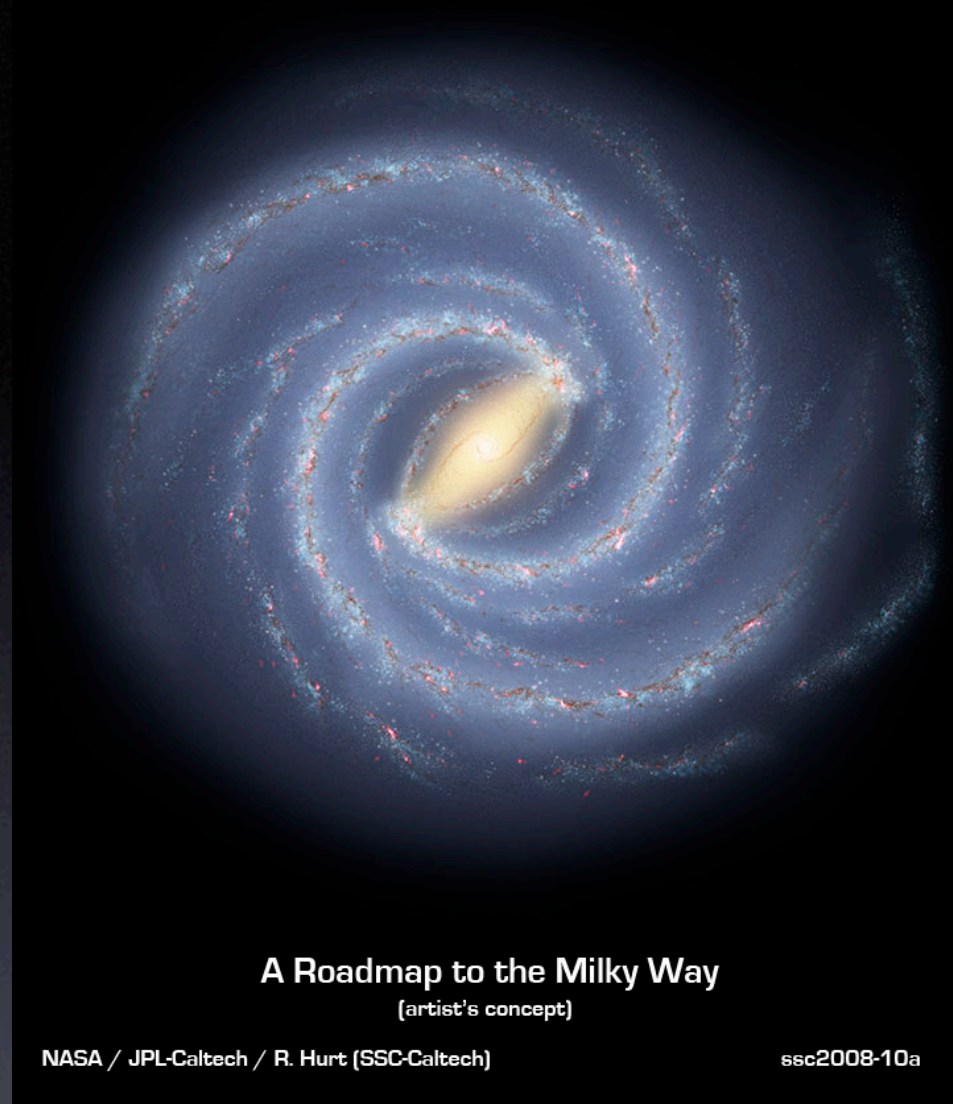


M51 SABbc



NGC 1232
SABc

Milky Way
illustration
~SBc



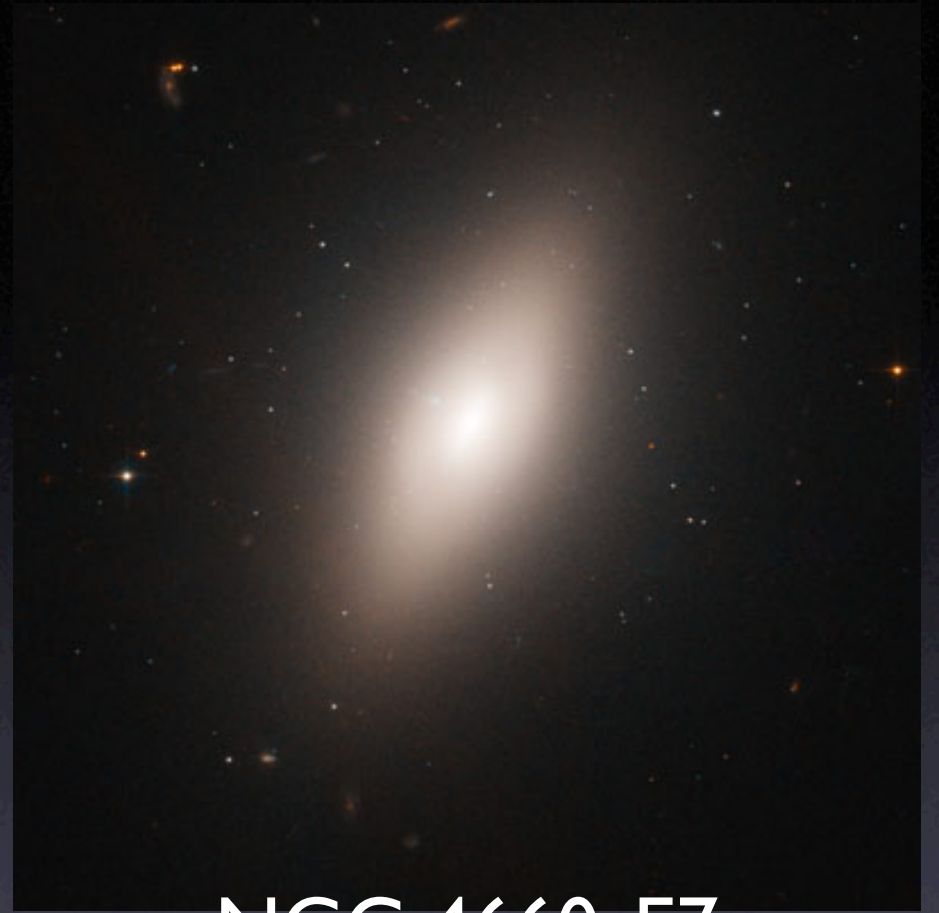
A Roadmap to the Milky Way
(artist's concept)

NASA / JPL-Caltech / R. Hurt (SSC-Caltech)

ssc2008-10a



M87, E0



NGC 4660, E7



NGC 5866



NGC 2787

S0s

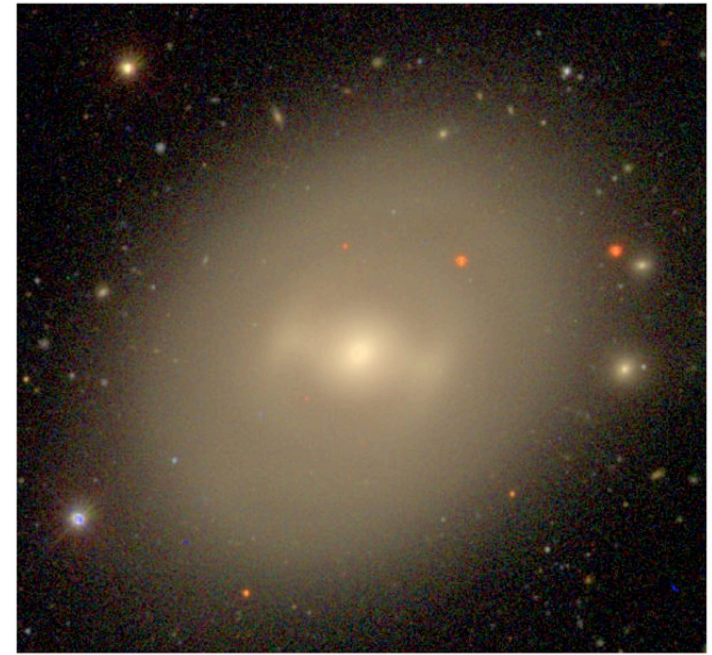
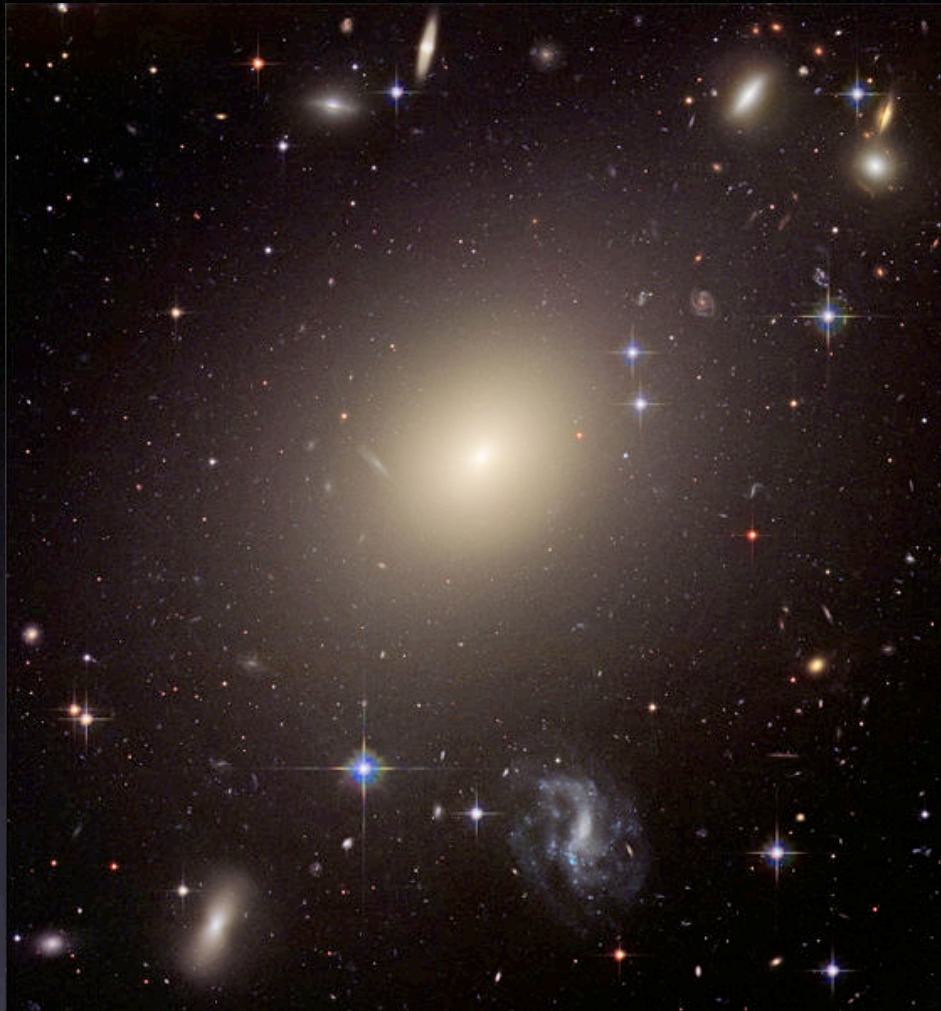


Fig 1.13 (Hogg, Blanton, SDSS) 'Galaxies in the Universe' Sparke/Gallagher CUP 2007

NGC 936 (Aloisi)



ESO 325-G004
cD in cluster
Abell S0740

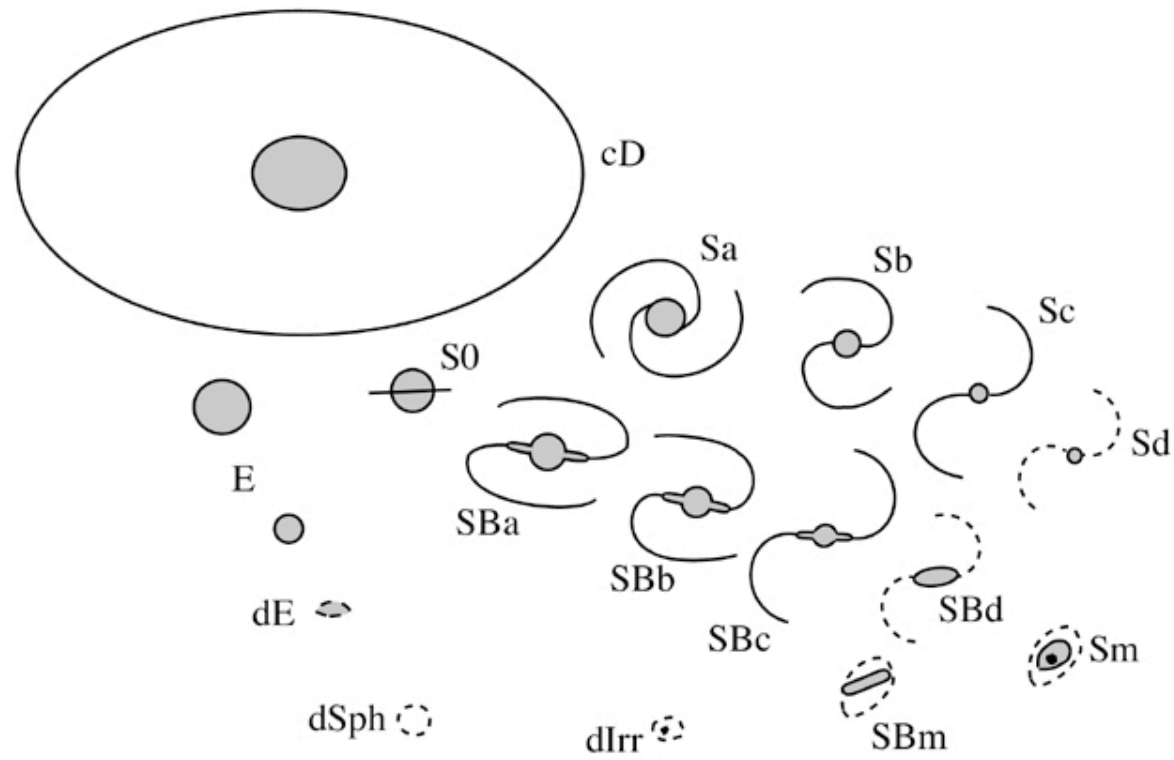
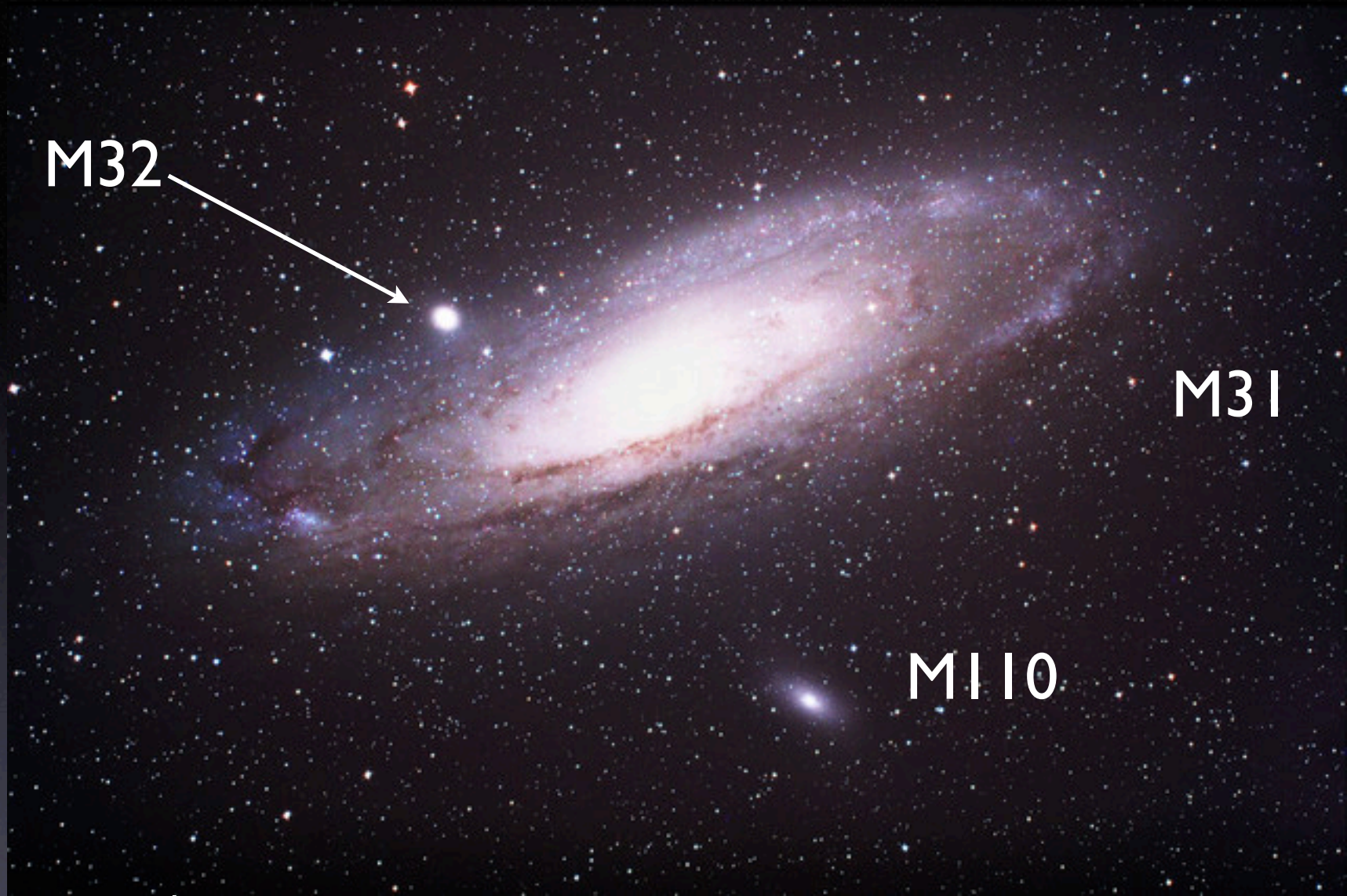


Fig 1.11 'Galaxies in the Universe' Sparke/Gallagher CUP 2007



(By Lanoue)

Dwarf elliptical
NGC 147

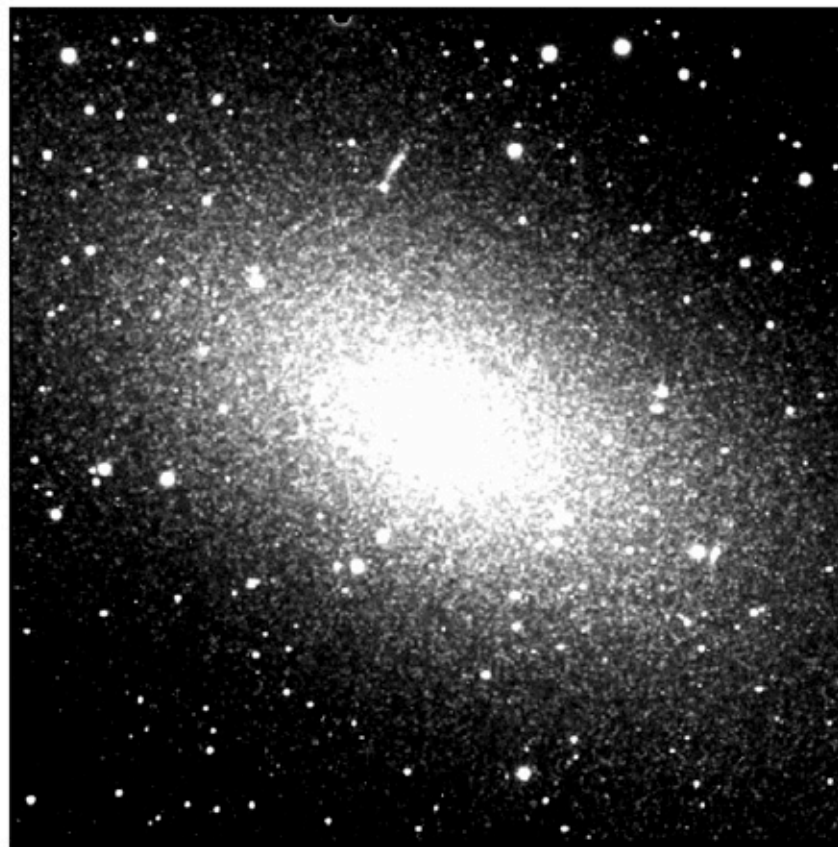


Fig 1.12R 'Galaxies in the Universe' Sparke/Gallagher CUP 2007



Sculptor Dwarf,
dwarf spheroid

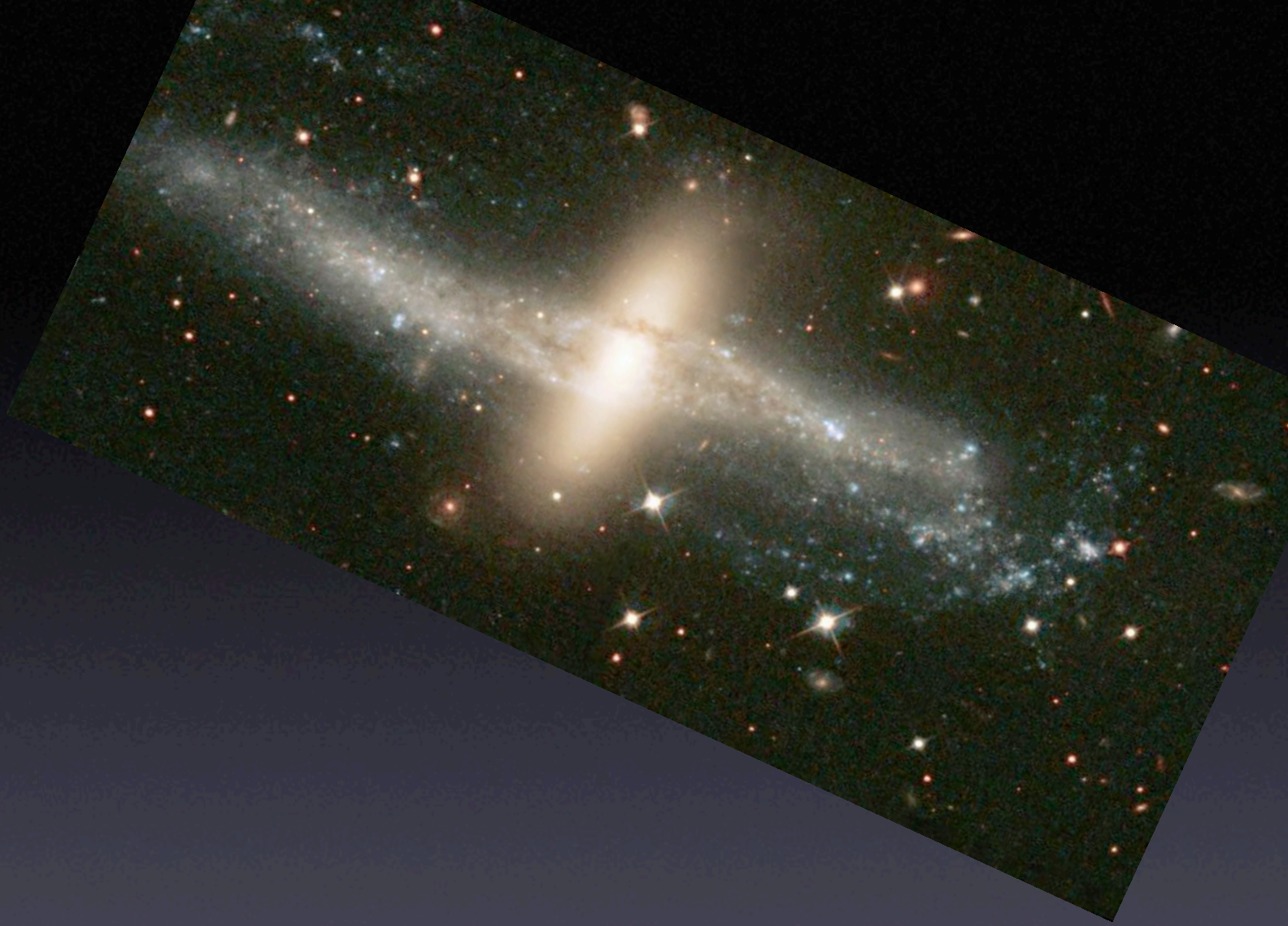
Irregular
NGC 4449





Large Magellanic
Cloud
(KAO)

NGC 4650A
Polar-ring
galaxy



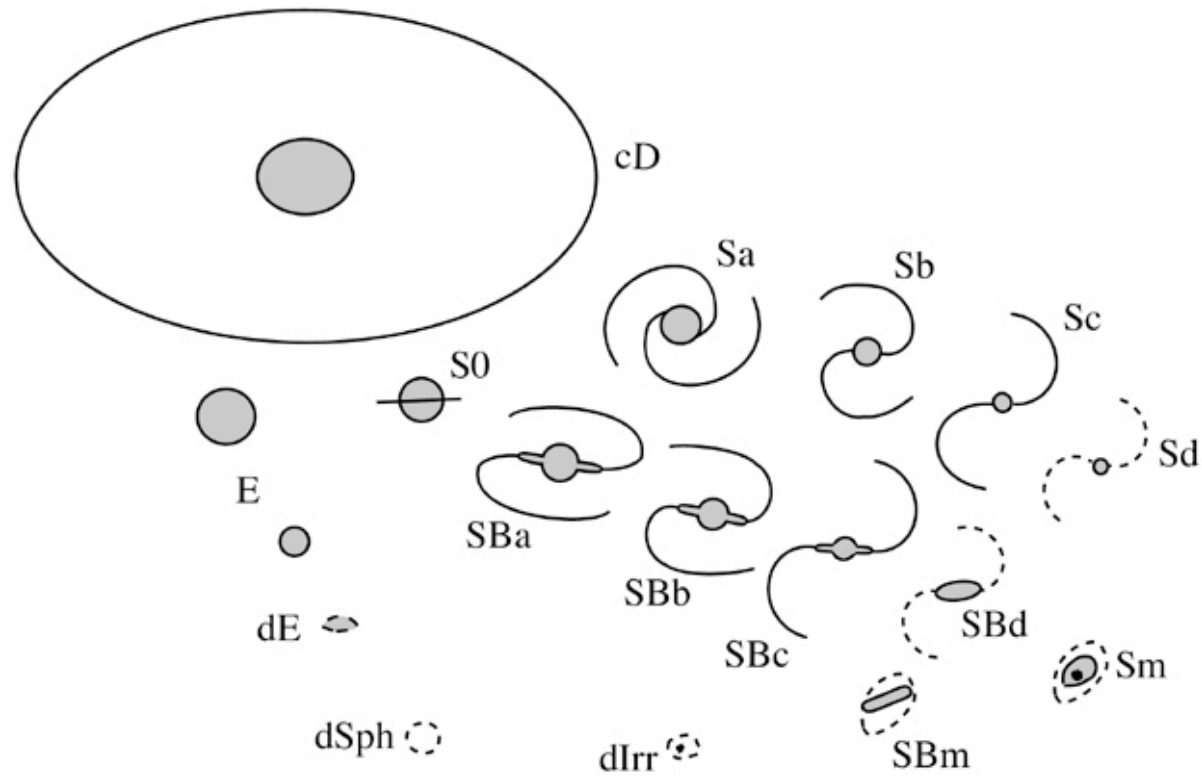


Fig 1.11 'Galaxies in the Universe' Sparke/Gallagher CUP 2007