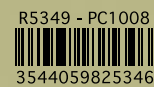




www.focal-fr.com



Focal-JMLab® - BP 374 - 108, rue de l'Avenir - 42353 La Talaudière cedex - France
Tel. +33 4 77 435 700 - Fax +33 4 77 435 704 - www.focal-fr.com



Due to constant technological advances, Focal-JMLab® reserves its right to modify specifications without notice. Images may not conform exactly to specific product. Photos: L'Atelier Sylvain Madelon.

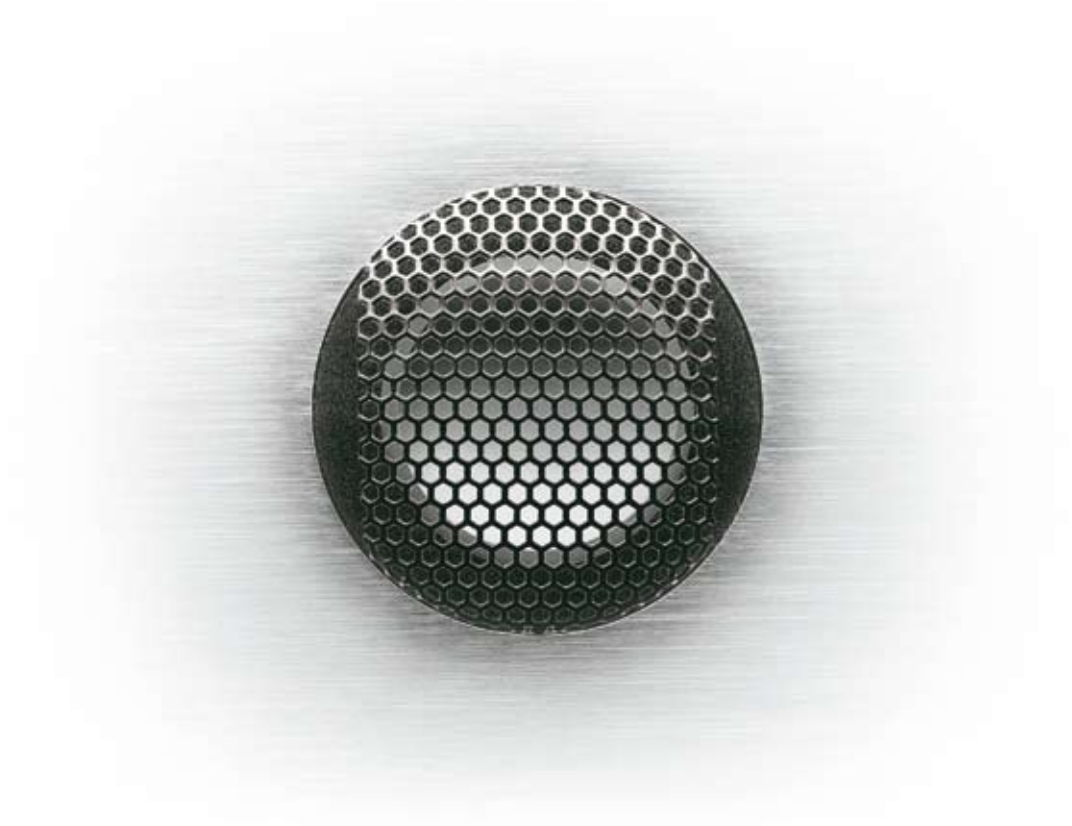
© Focal-JMLab 2009 - SCAB-090918/6

Focal®, Utopia®, Electra®, Profile®, Chorus®, Sib & Co®, "W"®, Gamma Structure®, Focus Time®, Power Flower®, Be Tweeter®, IAL®, Multiferrite®, EM®, MDS®, Polyglass®, OPC®, Powerflow®, Wall Boost Control®, Polyfix® are registered trademark of Focal-JMLab®, BASH® is a trademark of Indigo™.



Home Audio 2009 - 2010





Home Audio



> Chorus 826 W, série spéciale en édition limitée du 30^{ème} anniversaire de Focal. Finition exclusive Imperial Red, technologie W.

30th
LIMITED
EDITION



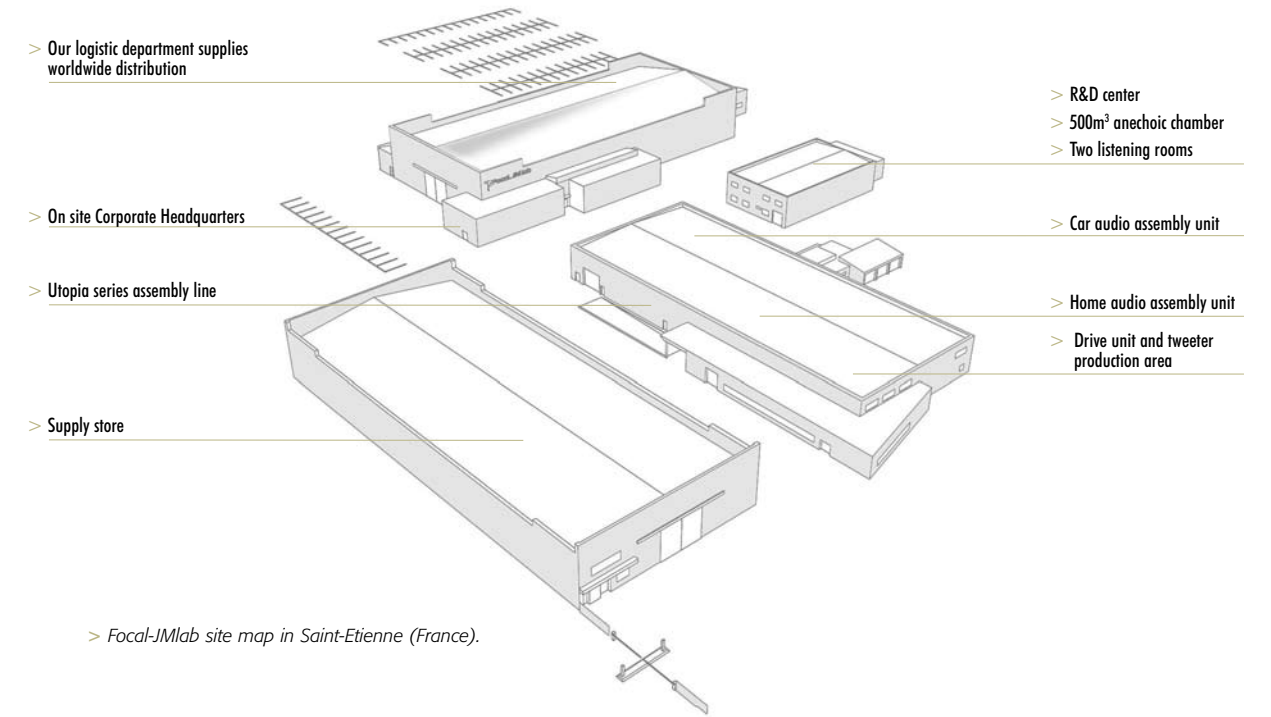
the Spirit of Sound

Since 30 years, Focal has designed, developed and manufactured drive-units and loudspeakers. Our renown is international: that of a market leader in the segment of quality acoustic loudspeakers. Over these years, several legendary models and series have appeared and led the way to greater success and prestige. At the zenith of this evolution, the Grande Utopia. This speaker alone created a worldwide shock that inscribed Focal into history books as the most innovative loudspeaker brand on the planet.

Innovation, design and industrialisation follow in a tradition where skilled handwork remains an essential element of our luxury offering, and justifies our activities in research and development, and most of all, the manufacturing of our loudspeakers at our production site. Dynamism and creativity are intrinsic Focal values. We believe that to push limits is the only possible avenue to innovation and that all that belongs to the domain of the impossible simply represents a challenge. The inverted-dome tweeter, pure

Beryllium, the exclusive "W" sandwich composite cone, Polyglass, the OPC crossover, Focus Ring, IAL structure, high-output BASH® digital amplification, subwoofers with digital processing... all these technologies represent solutions to the previously impossible. Innovation, tradition, be the world's best in everything we create for your pleasure, that's our philosophy: "the spirit of Sound".

> Focal, it's a brand, but also three divisions: Focal Home, Focal Car and Focal Professional. Each of these divisions enriches the others with its own experience to make progress in every field. Today, Focal Home also gathers three subdivisions, split between traditional Acoustic Loudspeaker, Integration solutions and Multimedia. Three different sound interpretations brought together by the same performance and sound quality concern.



> Focal, manufacturer of exceptional speakers. Electro-Magnet EM woofer, Grande Utopia EM.



Utopia III

Myths develop over the years

The Grande Utopia story started in 1995 with a major innovation: the W composite sandwich cone. It went on in 2002 with the Grande Utopia Be that introduced the pure Beryllium inverted dome tweeter. Other important inventions distinguished those two reference loudspeakers, which are still existing in the 2008 Grande Utopia. But nothing that can be compared to the W sandwich or the Beryllium, showcase of Focal's know-how, Focal, designer and manufacturer of the best drivers in the world. The 2008 technological break concerns once again the driver - at the heart of Focal's know-how - with the Electro-Magnet woofer technology. Such a decisive step that it gives its name to this third generation of Grande Utopia. It's a new milestone that is added to the long list of innovations coming from the previous generations of Grande Utopia: "W" cone, Focus Time, Multiferrite, Beryllium, Power Flower, OPC, Gamma Structure, all Utopia's patrimony is taken up in its entirety, enriched with new technologies.

To preserve this heritage, the 2008 Grande Utopia had to be immediately visually identifiable, keeping its imposing aspect of a reference loudspeaker, without being massive. To reach our first goal, we kept the Focus Time structure and the separate blocks for each driver, the true aesthetic signature of the Grande Utopia. To lighten the shape, the delimitation between the blocks is more important. Simplifying the object in the extreme and eliminating what could be aesthetically superfluous. Handed over to Pineau & Le Porcher agency, with which Focal-JMLab has been collaborating since 2003, the Grande Utopia EM's design is all purity and clarity - obvious. That's a truly amazing feat for a loudspeaker that now reaches 78" (2m) high and weighs 573lb (260kg)...

All of the models in the Utopia III range are available in Black Lacquer, Carrara White and Imperial Red. But may not be available in some countries and/or in some retail outlets.



The Grande Utopias are not only loudspeakers that have had a great impact on their generation. It's also the most accomplished concept of "The Spirit of Sound", the ultimate reference. After the "W" cones and the pure Beryllium tweeter of the previous models that had marked a technological advance, the Grande Utopia EM adopts an Electro-Magnet woofer (EM) with a force that cannot be compared to classical technologies. Superlative performance, unique style: the Grande Utopia EM is not only a technological monument, it's above all an acoustic sculpture.

A three-and-a-half-way loudspeaker, Maestro Utopia is one of the most sophisticated loudspeakers produced by Focal. To get closer to the Grande Utopia EM model without resorting to an electromagnet, it innovates in the bass with the MDS (Magnetic Damping System) to adapt to the listening room. With its 93dB efficiency, its punchy dynamics and its outstanding definition, its power capacity seems unlimited. Maestro is also suggested as a studio mastering midfield system.

All Utopia in a 3-way floorstanding loudspeaker with moderate size, that's Scala Utopia. Endowed with superlative performance, Scala Utopia delivers incredible musicality. Everything is easy for this loudspeaker, everything becomes obvious, music is naturally flowing. Scala Utopia is not even difficult to set up or install. That's a prestigious and fascinating loudspeaker, very high-end, without the common drawbacks.

Compact, distinguished and captivating, Diablo Utopia is the ultimate vision of the reference bookshelf loudspeaker, in the purest Focal's tradition. Largely inspired from the Grande Utopia EM, it sets new milestones in the bass thanks to its new patented 6 1/2" (16.5cm) Power Flower, with almost no saturation, and a driver integrated resonator. Fixed on a dedicated stand, Diablo Utopia enchants the midrange and the treble with its definition, demonizes the bass with a density and a power handling never reached so far.

	Grande Utopia EM <i>Carrara White finish</i>	Maestro Utopia <i>Black Lacquer finish</i>	Scala Utopia <i>Black Lacquer finish</i>	Diablo Utopia <i>Imperial Red finish</i>
• Type	4-way floorstanding bass-reflex loudspeaker	3 1/2-way, floorstanding bass-reflex loudspeaker	3-way floorstanding bass-reflex loudspeaker	2-way compact bass-reflex loudspeaker
• Drivers	Electro-Magnetic 16" (40cm) "W" woofer Multiferite 11" (27cm) "W" midbass 2 Power Flower 6 1/2" (16.5cm) "W" midrange 1" (27mm) IAL2 pure Beryllium inverted dome tweeter	11" (27cm) "W" subwoofer with a Magnetic Damping System (MDS) 11" (27cm) "W" woofer 6 1/2" (16.5cm) "W" Power Flower Midrange 1" (27mm) IAL2 pure Beryllium inverted dome tweeter	11" (27cm) "W" woofer Power Flower 6 1/2" (16.5cm) "W" midrange 1" (27mm) IAL2 pure Beryllium inverted dome tweeter	Power Flower "W" 6 1/2" (16.5cm) midbass 1" (27mm) IAL2 pure Beryllium inverted dome tweeter
• Frequency response (±3dB)	18Hz - 40kHz	25Hz - 40kHz	28Hz - 40kHz	44Hz - 40kHz
• Low frequency point (-6dB)	14Hz	21Hz	24Hz	40Hz
• Sensitivity (2.83V/1m)	94dB	93dB	92dB	89dB
• Nominal impedance	8 Ohms	4 Ohms	8 Ohms	8 Ohms
• Minimum impedance	3 Ohms	3 Ohms	3,1 Ohms	4 Ohms
• Crossover frequency	80Hz / 220Hz / 2200Hz	90Hz / 220Hz / 2200Hz	250Hz / 2200Hz	2200Hz
• Recommended amplifier power	50 - 1500W	80 - 600W	40 - 500W	25 - 200W
• Dimensions (HxWxD)	79 ^{13/16} x 25 ^{3/4} x 34 ^{5/8} " (2012 x 654 x 880mm)	57 ^{7/8} x 18 x 30 ^{5/16} " (1470 x 455 x 770mm)	49 ^{1/8} x 15 ^{1/2} x 26 ^{3/8} " (1247 x 393 x 670mm)	16 ^{15/16} x 10 ^{3/16} x 16 ^{13/16} " (431 x 258 x 427mm)
• Net weight	573.2 lb (260kg)	256lb (116kg)	187.4lb (85kg)	44lb (20kg)



> Optional Utopia Stand, 24" (60cm).



> Maestro Utopia Imperial Red.



Electra 1000



> Electra 1007 S, Classic finish.

That which stirs emotion....

The Electra 1000 line was founded on an obvious fact: to make the heritage, technologies and performance once reserved for Utopia Be more accessible ... on an economic level of course but not only. We wanted to create a high-end line of loudspeakers in harmony with the integration requirements in the nowadays interiors, compact, attractive, sleek and balanced at the same time. We added an "object" dimension to our high-end line that entirely became a decoration element, while our technologic patrimony is maintained to tend towards very high-end sound definition...

We entrusted our ideas and our innovations to a design group in Paris Pineau & Le Porcher who sketched out

the first contours in order to unite style and performance.

This line has firstly evolved in 2007 giving birth to the second range: Electra 1000 S, dedicated to make the Electra sound more affordable. In 2009, Electra 1000 Be becomes Electra 1000 Be 2 with new finishes, new drivers and an even more sophisticated sound.

In the end, there are two complete lines for high-fidelity and home-theatre, easy to install and to use. Two true emotion providers with their sophisticated aesthetics and their stunning performance.



> New 1" (27mm) pure Beryllium IAL tweeter from Utopia 3.

> Electra 1038 Be and 1008 Be, Champagne finish.



The Electra 1008 Be embodies Focal's know-how in terms of high-end compact loudspeakers. Added to the essential qualities of the 1007 Be, a more spacious and natural sound image, improved definition and more precise bass. The high power-handling enables it to work in rooms of big dimensions.



The Electra 1028 Be was a flagship of the Focal range, the 1028 Be goes even further, especially in the bass with the dual port Powerflow system. The dynamic leaps forward to be in harmony with the generosity and definition of the midrange-treble register that has always been a reference. A compact floorstander with irrefutable charm.



As the whole Electra Be 2 line, the 1038 Be benefits from new components and settings. The awesome strength of the three 7" (18cm) woofers, endless power, is now added to the new qualities gained in terms of sound image and definition. A true weapon of mass seduction.



The Electra CC 1008 Be follows the same evolutions as the loudspeakers so that the tones are in perfect harmony. Low horizontal directivity, high power-handling, definition and precision are part of the common points of Electra Be 2.



Not much evolution for the SR 1000 Be that benefits from the 3rd "W" cone generation. But its exclusive "Be/Twin" structure with dual input permits to use the SR 1000 Be as well as in a 5.1 system (in bipolar mode) as in a 7.1 (in dual mono mode) without increasing the number of effect loudspeakers in the Home Theatre room.



24 bits digital processor, 600W BASH® amplifier, 13" (33cm) "W" woofer, the Electra SW 1000 Be offers high-level performance with a 18Hz cut-off and a 119dB sound power. The SW 1000 Be now benefits from a remote control lock when infrared conflicts appear with other boxes.

> The Electra 1000 Be 2 line can be completed with the In-Wall loudspeakers. The IW 1003 Be and IW 1002 Be are equipped with the same speakers (see integration line)



> Electra IW 1002 Be



> Electra IW 1003 Be

Electra 1008 Be
Champagne finish

Electra 1028 Be
High Gloss Slate Grey finish

Electra 1038 Be
Basalt finish

Electra CC 1008 Be
Champagne finish

	Electra 1008 Be Champagne finish	Electra 1028 Be High Gloss Slate Grey finish	Electra 1038 Be Basalt finish	Electra CC 1008 Be Champagne finish
• Type	2-way bass-reflex bookshelf speaker.	3-way bass-reflex floor standing speaker, Powerflow.	3-way bass-reflex floor standing speaker.	3-way bass-reflex shielded center speaker.
• Drivers	6 1/2" (16.5cm) "W" midbass. 1 1/4" (27mm) pure Beryllium IAL inverted dome tweeter.	Two 6 1/2" (16.5cm) "W" woofers. 6 1/2" (16.5cm) "W" midrange. 1 1/4" (27mm) pure Beryllium IAL inverted dome tweeter.	Three 7" (18cm) "W" woofers. 6 1/2" (16.5cm) "W" midrange. 1 1/4" (27mm) pure Beryllium IAL inverted dome tweeter.	Two 6 1/2" (16.5cm) "W" woofers. 3" (8cm) "W" midrange. 1 1/4" (27mm) pure Beryllium IAL inverted dome tweeter.
• Frequency response (±3dB)	46Hz - 40kHz	34Hz - 40kHz	33Hz - 40kHz	55Hz - 40kHz
• Low frequency point (-6dB)	41Hz	28Hz	26Hz	50Hz
• Sensitivity (2.83V/1m)	89dB	91.5dB	93dB	91dB
• Nominal impedance	8 Ohms	8 Ohms	8 Ohms	8 Ohms
• Minimum impedance	3.9 Ohms	3.5 Ohms	3.3 Ohms	4.1 Ohms
• Crossover frequency	2 200Hz	350Hz / 2 200Hz	230Hz / 2 200Hz	500Hz / 2 200Hz
• Recommended amplifier power	25 - 150W	40 - 300W	40 - 400W	40 - 200W
• Dimensions (HxWxD)	15 3/16 x 10 3/8 x 13 3/4" (385x264x350mm)	43 11/16 x 10 3/8 x 13 3/4" (1 110x264x350mm)	49 3/16 x 11 15/16 x 15 3/4" (1 250x303x400mm)	9 1/4 x 24 x 13 3/4" (235x609x350mm)
• Net weight	33lb (15kg)	72.6lb (33kg)	112.2lb (51kg)	41.8lb (19kg)

Electra SR 1000 Be
High Gloss Slate Grey finish

Electra SW 1000 Be
Basalt finish

	Electra SR 1000 Be High Gloss Slate Grey finish	Electra SW 1000 Be Basalt finish
• Type	2-way sealed bipole/twin mono effects speaker	Active bass-reflex subwoofer
• Drivers	Two 6 1/2" (16.5cm) "W" midbass. Two 1" (25mm) pure Beryllium inverted dome tweeters.	13" (33cm) "W" woofer.
• Frequency response (±3dB)	72Hz - 40kHz	20Hz - 150Hz
• Low frequency point (-6dB)	59Hz	18Hz
• Sensitivity (2.83V/1m)	91dB	Subwoofer features
• Nominal impedance	4 Ohms/8 Ohms	Adjustable LPF: 50Hz to 150Hz (24dB/oct.), 48dB/oct. adjustable subsonic filter, adjustable phase, Boost mode, adjustable phase, Boost mode, Night mode, 3 user memories, LFe/Stereo/Digital enter. Remote Control Locking System
• Minimum impedance	3 Ohms/6 Ohms (bi/twin)	
• Crossover frequency	2 400Hz	
• Recommended amplifier power	40 - 200W	600W (750W max.) BASH® amplifier
• Dimensions (HxWxD)	15 3/8 x 17 x 7 1/2" (390x430x190mm)	21 1/16 x 19 1/16 x 17" (535x500x432mm)
• Net weight	27.7lb (12.6kg)	92.4lb (42kg)



> 24" (60cm) High Gloss S 1000 stand, Slate Grey laquer.

All of the models in the Electra 1000 Be 2 range (except SR 1000 Be) are available in Basalt, Champagne and Slate Grey finishes. But may not be available in some countries and/or in some retail outlets. Other special finishes on demand.



> Electra IC 1002



> Electra IW 1002

> The Electra S line has In-Wall IW 1002 and In-Ceiling IC 1002 loudspeakers equipped with the same speakers (see integration line).



The new Al/Mg tweeter perfectly suits this superb loudspeaker that seduces with its communicative energy and its mid-range/treble sparkling with detail. Like the Electra 1007 Be, the quality of the bass, which is technically identical, is impressive, even in rooms of large dimensions. That's a high-range compact loudspeaker with an exceptional quality/price ratio.



This elegant floorstander impresses by its outstanding bass power considering its moderate size. Its definition, its perfect balance between extreme bass and extended treble will be appreciated on any music type, at high or low sound level and make the 1027 S the queen of versatility.



The CC 1000 S is much more than a simple inspiration of the Beryllium version. It has the same three-way structure for ideal directivity in the horizontal plane. Its Al/Mg tweeter is of course in total harmony with the loudspeakers of the Electra 1000 S line.



Like the CC 1000 S, the SR 1000 S takes up the essential of the surround speaker Electra Be. This loudspeaker is actually equipped with the "Bi/Twin" system that permits to make it work in a bipolar mode or "double monoral" to constitute a 7.1 system from only two surround speakers.



If the SW 1000 S takes up the essential of the Be version technologies, it's clearly more compact with a 27cm woofer to facilitate integration. Its 114dB SPL is ideal for rooms up to 50m², even at a high sound level, for Home Theatre or an outstanding triphonic system.

> The bass enclosure SW 1000 S, as compact as impressive, was developed for Home Theatre, but not only. Combined with the bookshelf 1007 S loudspeaker, here is a triphonic system which is discreet and tremendously efficient in the bass. It's an alternative solution to the Electra 1027 S floorstanders at the same price, for those who want to favor the sensations in the extreme bass.



	Electra 1007 S <i>Classic finish</i>	Electra 1027 S <i>Macassar finish</i>	Electra CC 1000 S <i>Classic finish</i>	Electra SR 1000 S <i>High gloss slate grey finish</i>
• Type	2-way bass-reflex bookshelf speaker.	3-way bass-reflex floor standing speaker.	3-way bass-reflex shielded center speaker.	2-way sealed bipole/twin mono effects speaker.
• Drivers	6 1/2" (16.5cm) "W" mid-bass 1" (25mm) Al/Mg inverted dome tweeter.	Two 6 1/2" (16.5cm) "W" woofers. 6 1/2" (16.5cm) "W" midrange. 1" (25mm) Al/Mg inverted dome tweeter.	Two 6 1/2" (16.5cm) "W" woofers. 3" (8cm) "W" midrange. 1" (25mm) Al/Mg inverted dome tweeter.	Two 6 1/2" (16.5cm) "W" mid-bass. Two 1" (25mm) Al/Mg inverted dome tweeters.
• Frequency response (±3dB)	46Hz - 30kHz	42Hz - 30kHz	55Hz - 30kHz	72Hz - 30kHz
• Low frequency point (-6dB)	41Hz	34Hz	50Hz	59Hz
• Sensitivity (2.83V/1m)	89dB	91dB	91dB	91dB
• Nominal impedance	8 Ohms	8 Ohms	8 Ohms	8 Ohms
• Minimum impedance	3.9 Ohms	3.5 Ohms	4.1 Ohms	3 Ohms/6 Ohms (bi/twin)
• Crossover frequency	2 500Hz	300Hz / 2 500Hz	500Hz / 2 500Hz	2 500Hz
• Recommended amplifier power	25 - 150W	40 - 300W	40 - 200W	40 - 200W
• Dimensions (HxWxD)	15 3/16" x 10 3/8" x 13 3/4" (385x264x350mm)	41 3/8" x 10 3/8" x 13 3/4" (1050x264x350mm)	9 1/4" x 24 x 13 3/4" (235x609x350mm)	15 3/8" x 17 x 7 1/2" (390x430x190mm)
• Net weight	30.8lb (14kg)	68.2lb (31kg)	41.8lb (19kg)	27.7lb (12.6kg)

	Electra SW 1000 S <i>Classic finish</i>
• Type	Active bass-reflex subwoofer.
• Drivers	11" (27cm) "W" woofer.
• Frequency response (±3dB)	29Hz - 150Hz
• Low frequency point (-6dB)	25Hz
Subwoofer features	
	Adjustable LPF: 50Hz to 150Hz [24dB/oct.], 24dB/oct. adjustable subsonic filter, adjustable phase, Boost mode, Night mode, 3 user memories, LFe/Stereo.
• Recommended amplifier power	350W (450W max.) BASH® amplifier
• Dimensions (HxWxD)	16 15/16" x 16 5/8" x 15 13/16" (430x422x402mm)
• Net weight	56.1lb (25.5kg)



> 24" (60cm) Standard Electra S 1007.1 stand, Aluminum and Black Silk.

All of the models in the Electra 1000 S range (except SR 1000 S) are available in Classic & Macassar finishes. But, may not be available in some countries and/or in some retail outlets.

Profile 900

Breaking the limits

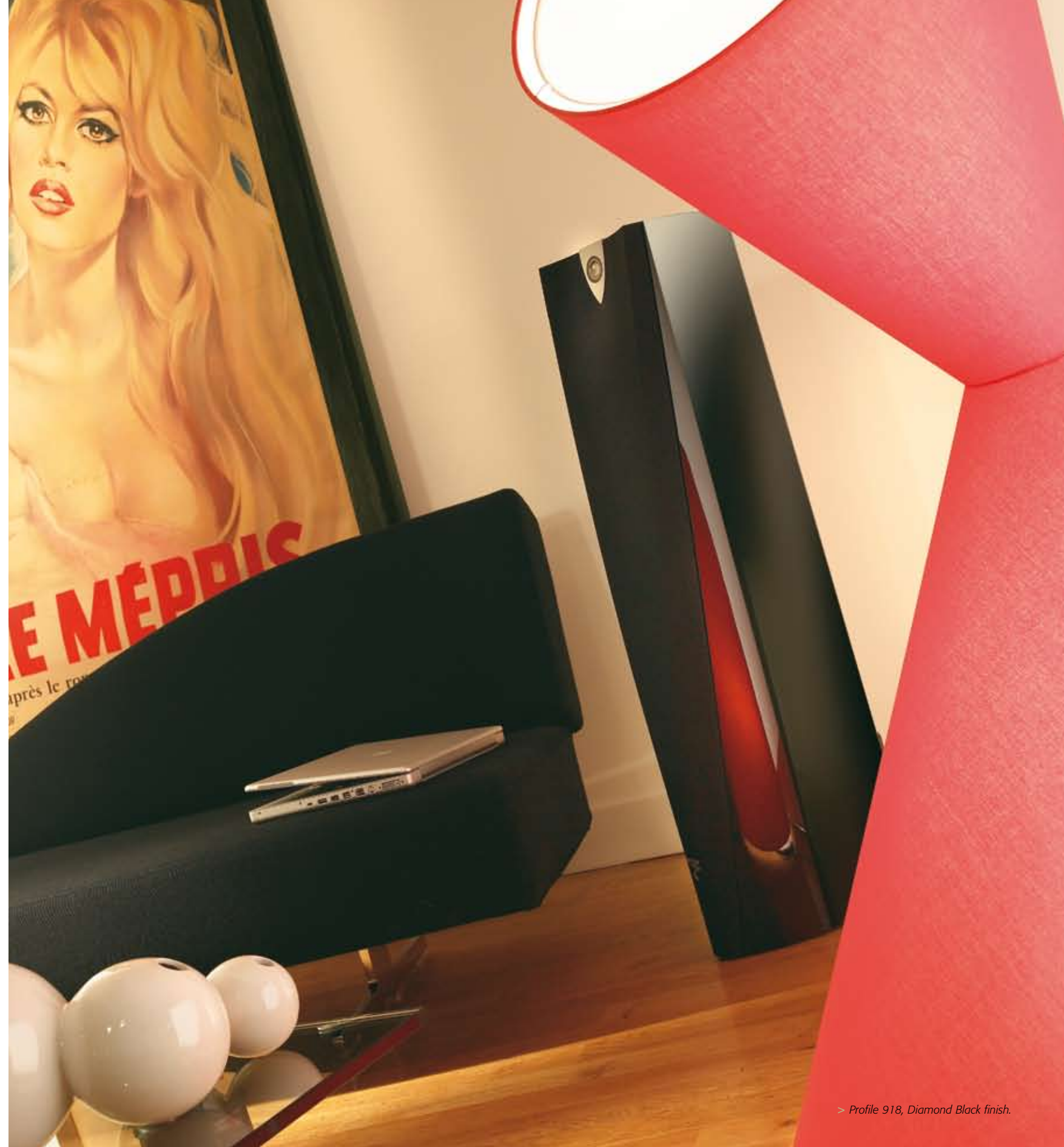
The Profile 900 line is the expression of an idea: create an acoustic loudspeaker whose function is immediately apparent. To pursue the superfluous, remove all unnecessary visual elements that render the object aggressive or intruding, lean towards a formal simplicity for each detail, each curve seems organic rather than drawn... this is the only possible way to create in the end a loudspeaker that easily integrates just as surely as

it carries a strong personality. But this only becomes possible when technology and aesthetics have become one, when they have consumed and absorbed their own restrictions. Profile 900 is above all a high performance loudspeaker line, which cannot allow even the smallest concession to aesthetics. It is this challenge, the result of two years of hard work in collaboration with a design agency which motivated Profile to evolve

new technological solutions never seen in this segment. Invent a new manufacturing process and adopt a resolute attitude to achieve the impossible, these are the keys to the Profile 900 project. To push the limits is the only possible way to innovation.



> The Profile 918 is available in Diamond Black and Diamond White versions.



> Profile 918, Diamond Black finish.



The Profile spirit shines in the appearance of the 908: advanced technologies, innovation at all levels, but also beauty in the curves and compact size. Musical and aesthetic, the Profile 908 expresses a great "joie de vivre"



This absolutely elegant two and a half way concentrates all the know-how of Focal. But its refined curves and the strength of its design does not only serve its aesthetic, but the exceptional rigidity of the cabinet and the absence of parallel inner walls are immediately apparent assets.



The CC 908 is constructed according to the same model as the Electra CC 1000 Be: same woofers and midrange but with the aluminum-magnesium tweeter. It functions in total harmony with the other speakers in the range, in regards to the sonic signature as well as its directivity characteristics.



Very compact, this bipolar loudspeaker was designed with the same obsessive attention to coherence as the other Profile loudspeakers. The dispersion, very wide and homogeneous, gives the speaker the rare capability to fill the listening room. 3D surround effects are guaranteed.



This active, remotely controlled subwoofer starts with the same motor as the Electra SW 1000 Be: 24 bit DSP processor, 13" (33cm) "W" woofer, and BASH® amplifier. The power of its impact is reference-quality, even at unbelievable pressure levels.



Compact version of the SW 908, the Profile SW 904 adopts the same structure and DSP processing, but with an 11" (27cm) woofer. It represents an excellent choice where the positively seismic pressure levels of the SW 908 may not be required.

Profile 908
Diamond Black finish

Profile 918
Diamond Black and Diamond White finish

Profile CC 908
Diamond Black finish

Profile SR 908
Black satin finish

• Type	2-way bass-reflex bookshelf speaker.	2 1/2-way bass-reflex floor standing speaker.	3-way bass-reflex shielded center speaker.	2-way sealed bipolar effects speaker.
• Drivers	6 1/2" (16.5cm) "W" mid-bass. 1" (25mm) Al/Mg inverted dome tweeter.	6 1/2" (16.5cm) "W" woofer. 6 1/2" (16.5cm) "W" mid-bass. 1" (25mm) Al/Mg inverted dome tweeter.	Two 6 1/2" (16.5cm) "W" woofers. 3" (8cm) "W" midrange. 1" (25mm) Al/Mg inverted dome tweeter.	Two 6 1/2" (16.5cm) "W" woofers. Two 1" (25mm) Al/Mg inverted dome tweeter.
• Frequency response (±3dB)	50Hz - 30.5kHz	40Hz - 30.5kHz	65Hz - 30.5kHz	75Hz - 30.5kHz
• Low frequency point (-6dB)	45Hz	36Hz	52Hz	61Hz
• Sensitivity (2.83V/1m)	89dB	90dB	91dB	91dB
• Nominal impedance	8 Ohms	8 Ohms	8 Ohms	8 Ohms
• Minimum impedance	3.7 Ohms	3.2 Ohms	4.2 Ohms	5.2 Ohms
• Crossover frequency	2 600Hz	180Hz / 2 600Hz	500Hz / 2 600Hz	2 600Hz
• Recommended amplifier power	25 - 150W	40 - 200W	40 - 200W	40 - 200W
• Dimensions (HxWxD)	15 3/8x9x10 7/8" (390x230x275mm)	39x9x13 3/4" (990x230x350mm)	8x24 7/8x12 3/4" (205x632x324mm)	11 5/8x15 7/8x7 5/8" (295x403x194mm)
• Net weight	18.7lb (8.5kg)	43lb (19.5kg)	31.9lb (14.5kg)	19.4lb (8.8kg)

Profile SW 908
Diamond Black finish

Profile SW 904
Black satin finish

• Type	Active bass-reflex subwoofer.	Active bass-reflex subwoofer.
• Drivers	13" (33cm) "W" woofer.	11" (27cm) "W" woofer.
• Frequency response (±3dB)	27Hz - 150Hz	32Hz - 150Hz
• Low frequency point (-6dB)	23Hz	27Hz
• Sensitivity (2.83V/1m)	Subwoofer features	Subwoofer features
• Nominal impedance	Adjustable LPF: 50Hz to 150Hz (24dB/oct.), 24dB/oct. adjustable subsonic filter, adjustable phase, Boost mode, Night mode, 3 user memories, LFe/Stereo/Digital input.	Adjustable LPF: 50Hz to 150Hz (24dB/oct.), 24dB/oct. adjustable subsonic filter, adjustable phase, Boost mode, Night mode, 3 user memories, LFe/Stereo.
• Minimum impedance		
• Crossover frequency		
• Recommended amplifier power	500W (700W max.) BASH® amplifier	350W (450W max.) BASH® amplifier
• Dimensions (HxWxD)	20x19 1/4x15" (510x488x380mm)	19 13/16x16 15/16x12 3/8" (504x430x315mm)
• Net weight	59.4lb (27kg)	50.6 lb (23kg)



> 24" (60cm) optional Profile S 908 stand.



> 16" (40cm) optional Profile SCC 908 stand.

Chorus 800 V

Affordable luxury

For Focal, Chorus symbolizes one of the most stimulating challenges for the loudspeaker and refined product manufacturer that we are: to allow the greatest number of consumers to access our technological innovations. For the first two generations Chorus (2000) and Chorus S (2003), the objective was to conserve a hi-end sound and maintain sophisticated Focal technologies by adapting our industrial machine to the highest standards. While outsourcing had become a key economic strategy for the majority of manufacturers, we chose on the contrary to heavily invest in our manufacturing process in order to achieve an exceptional sound quality

while at the same time remaining competitive. It is the only possible way in this path of permanent innovation: development and manufacturing of loudspeakers "Made in France", design by cabinet-makers, mastery of quality, total autonomy in the design and development of our products. This strategy has been key to the success of the preceding Chorus lines.

This third generation known as Chorus 800 V will go even further in this strategy. Technological innovation does not solely touch strategic components of the speaker, but the actual whole of the design. Thanks to the use of advanced and exclusive materials,

elaborate manufacturing techniques of the cabinets, the Chorus 800 V line of today shines with a unique, hi-end esthetic. Chorus V isn't only a performing product line, ideal for entering the Focal universe, but objects that will inhabit living spaces, with an innovative esthetic, quality of manufacture and a finish worthy of a higher segment. This is indeed a new esthetic dimension, a new era for the "Spirit of Sound".

For 2010, a new Natural finish is available.



> Cast aluminum base of the Powerflow® bass-reflex system, for Chorus 800 V.



> Chorus 826 V, Ebony finish.



> The Chorus V range offers models suitable for custom installation, the IC 706 V, IC 706 VST, IW 706 V and the outdoor speaker OD 706 V.



Neutral and balanced, the Chorus 806 V seduces by the richness of its upper midrange and the speed of its bass. An entirely refined speaker, ideal to play in rooms under 20 m² without any limits. And easily larger spaces if it is combined with SW 800 V.



This good-looking, two-way speaker, the only equipped with a 7" (18cm) woofer, has the true spirit of the legendary dB19: powerful bass, a big speaker for a guaranteed rock 'n' roll sound.



Chorus 816 V makes the most of the 2 and a half-way configuration: elevated performance in lower octaves thanks to the combination of woofers working in unison. Up to 30m².



The star floor-stander of the series combines power from its two woofers, double ports and separate midrange. A very classy speaker, untiring even whilst copiously performing in rooms up to 40m².



Three-way, 3 woofers, 5 drivers in all... the Chorus 836 V has no fear of (very) large spaces. High-end in sound and shape, the power of the bass will surprise you. 836 V is nothing short of a grande dame, generous, powerful but refined and subtle as well.



The CC 800 V enjoys the developments from the Profile 900 and the Electra 1000 Be lines: a perfectly mastered directionality, linearity, neutrality, gentleness and dynamics, its timbre is calibrated to match that of all of its Chorus 800 V loudspeakers.



Its capacity to fill surround space with precision is spectacular. Its behavior is optimized thanks to the integrated "Wall Boost Control" and with exacting directivity. Compact, discrete, but Chorus in its spirit with an acrylic finish.



The power of the SW 800 V climbs to 350W RMS and the frequency response extends to 32Hz. Over-equipped and capable of generating bass with a substantial power output of 115dB, it stands arms and shoulders above others in its category.



> All the Chorus 800 V loudspeakers are supplied with a high quality, micro-fiber cloth for easy, risk-free cleaning.

	Chorus 806 V Natural finish	Chorus 807 V Ebony finish	Chorus 816 V Natural finish	Chorus 826 V Ebony finish
• Type	2-way bass-reflex bookshelf loudspeaker	2-way bass-reflex bookshelf loudspeaker	2 1/2-way bass-reflex floorstanding loudspeaker, Powerflow	3-way bass-reflex floorstanding loudspeaker, Powerflow
• Drivers	6 1/2" (165mm) Polyglass midbass 1" (25mm) TNV Al/Mg inverted dome tweeter	7" (180mm) Polyglass midbass 1" (25mm) TNV Al/Mg inverted dome tweeter	6 1/2" (165mm) Polyglass woofer 6 1/2" (165mm) Polyglass midbass 1" (25mm) TNV Al/Mg inverted dome tweeter	2x6 1/2" (165mm) Polyglass woofers 6 1/2" (165mm) Polyglass midrange 1" (25mm) TNV Al/Mg inverted dome tweeter
• Frequency response (+/- 3dB)	55Hz - 28kHz	50Hz - 28kHz	47Hz - 28kHz	45Hz - 28kHz
• Low frequency point (-6dB)	47Hz	41Hz	39Hz	37Hz
• Sensitivity (2.83V/1m)	90dB	92dB	91.5dB	91.5dB
• Nominal impedance	8 ohms	8 ohms	8 ohms	8 ohms
• Minimum impedance (@25°C)	3.6 ohms @ 226Hz	4.2 ohms @ 160Hz	4.3 ohms @ 146Hz	2.9 ohms @ 118Hz
• Crossover frequency	3000Hz	3000Hz	300Hz / 3000Hz	300Hz / 3000Hz
• Max. power handling	120W	160W	200W	220W
• RMS Power	80W	110W	130W	150W
• Dimensions (HxWxD)	15 3/8" x 8 3/4" x 11 9/16" (390x222x293mm)	17 5/8" x 9 1/3" x 13 1/8" (448x237x333mm)	39 5/16" x 11 1/8" x 14 3/4" (998x282x375mm)	40 7/8" x 11 1/8" x 14 3/4" (1038x282x375mm)
• Net weight	18lb (8.2kg)	22.2lb (10.1kg)	49.5lb (22.5kg)	56.8lb (25.8kg)

	Chorus 836 V Natural finish	Chorus CC 800 V Ebony finish	Chorus SR 800 V Black Satin finish	Chorus SW 800 V Natural finish
• Type	3-way bass-reflex floorstanding loudspeaker, Powerflow	2-way bass-reflex shielded center channel	2-way sealed bipolar effects loudspeaker, Polyfix™ wall bracket	Bass-reflex active subwoofer
• Drivers	3x6 1/2" (165mm) Polyglass woofers 6 1/2" (165mm) Polyglass midrange 1" (25mm) TNV Al/Mg inverted dome tweeter	2x6 1/2" (165mm) Polyglass midbass 1" (25mm) TNV Al/Mg inverted dome tweeter	2x5" (130mm) Polyglass midbass 2x1" (25mm) TNV Al/Mg inverted dome tweeters	11" (270mm) Polyglass woofer
• Frequency response (+/- 3dB)	40Hz - 28kHz	57Hz - 28kHz	75Hz - 28kHz	32Hz - 160Hz
• Low frequency point (-6dB)	33Hz	50Hz	65Hz	27Hz
• Sensitivity (2.83V/1m)	92dB	91dB	90dB	Subwoofer features
• Nominal impedance	8 ohms	8 ohms	8 ohms	Adjustable LPF: 40Hz to 160Hz Night mode Subsonic mode (35Hz, 24dB/oct.) Phase inverter Boost mode (+ 3dB @ 40Hz) Autopower Lfe, Stereo and High Level input
• Minimum impedance (@25°C)	3 ohms @ 110Hz	4 ohms @ 210Hz	3.7 ohms @ 210Hz	
• Crossover frequency	250Hz / 3000Hz	3000Hz	3000Hz	
• Max. power handling	250W	150W	120W	500W BASH® amplifier
• RMS Power	180W	100W	80W	350W BASH® amplifier
• Dimensions (HxWxD)	45 3/16" x 11 1/8" x 14 3/4" (1148x282x375mm)	7 7/16" x 19 7/16" x 11 9/16" (189x493x294mm)	11 7/16" x 15 3/4" x 6 7/8" (290x400x175mm)	17 15/16" x 12 3/4" x 16 3/4" (456x324x426mm)
• Net weight	66lb (30kg)	24.2lb (11kg)	12.3lb (5.6kg)	41.4lb (18.8 kg)



> 24" (60cm) optional Chorus S 800 V stand.

All of the models in the Chorus V range (except SR 800 V) are available in Ebony and Natural finishes. But may not be available in some countries and/or in some retail outlets.



Chorus 700 V

Innovation is our business

Since the year 2000, the different generations of the Chorus line have benefited from this approach, as we produced speakers that performed better. To achieve this goal, we invested massively in a superior method to speaker manufacturing, where intelligent machining and precise handwork were absolutely necessary.

It was the only possible way in this drive for quality and competitiveness: development

and manufacturing of French-made loudspeakers, design of the cabinets, quality control, a total autonomy in the development and design of our own products. This method allows us to innovate, to entirely and independently turn ideas into reality, to place patents internationally, and have the means to anticipate trends. And finally, to progress. The third generation, Chorus 700 V, goes even further. A direct descendant of the

Chorus 800 V line of which it heavily borrows technical elements (except Powerflow) yet with more traditional finishes, Chorus 700 V invites you in to the Focal universe. The build quality and high-end finishing work are entirely unknown in this price-range.

> 6 1/2" (16.5cm) Polyglass® woofer.





> In-Ceiling Chorus IC 706 V and In-Wall IW 706 V loudspeakers. Stereo In-Ceiling IC 706 V ST loudspeaker.

All of the models in the Chorus 700 V range (except SR 700 V) are available in Black Ash, Wengé and Amati. But may not be available in some countries and/or in some retail outlets.



Chorus 705 V is the ideal loudspeaker for installation in rooms of modest dimensions (approximately 15m²). With a responsive and lively bass, it represents the foundations of a great system, especially when paired with the SW 700 V subwoofer.



Chorus 706 V is the epitome of a reference, compact loudspeaker: a true Focal tradition. Superbly balanced and neutral, its accuracy and definition are ideal for rooms near 20m².



The smallest of the Chorus V floorstanders exhibits a fine form with a minimal footprint. Elaborate yet balanced, the Chorus 714 V benefits from two 5" (14cm) woofers in a 2-and-a-half way configuration to deliver solid bass. Ideal for rooms of 15 to 25m².



The Chorus 716 V examines the 2-and-a-half way formula in a high-end configuration, with two 6 1/2" (16.5cm) woofers working in tandem in the bass (only the higher unit also reproduces the midrange). Double the bass impact for rooms up to 30m².



The Chorus 726 V is the accessible high-end loudspeaker incarnate: technically very advanced, its 3-way design marries the exceptional definition of the midrange with the power of the two 6 1/2" (16.5cm) woofers. A great sound, ample, generous, and more... up to 40m².



The Chorus CC 700 V is a centre loudspeaker that has been phase-optimized to offer an optimal directionality. Its qualities of dynamics, linearity and timbre are equally in phase with the ensemble of the Chorus 700 V line to maintain an excellent sonic coherence.



The same drive-units as in the Chorus V line, in a very flat and compact loudspeaker, this is the key to the SR 700 V. It is aesthetic, discrete and an all-out performer! Ideal to fill large surround spaces and to accompany Chorus 700 V in multi-channel mode.



A considerable evolution of the famous SW 700 S subwoofer of the last generation, the new SW 700 V uses the same motor (BASH® amplifier and 11" Polyglass woofer) in a more elaborate cabinet design which is among other things, much more rigid. More depth, more impact.

	Chorus 705 V <i>Black Ash finish</i>	Chorus 706 V <i>Wengé finish</i>	Chorus 714 V <i>Amati finish</i>	Chorus 716 V <i>Wengé finish</i>
• Type	2-way bass-reflex bookshelf speaker, wall mounting.	2-way bass-reflex bookshelf speaker.	2 1/2-way bass-reflex floor standing speaker.	2 1/2-way bass-reflex floor standing speaker.
• Drivers	5" (14cm) Polyglass mid-bass. 1" (25mm) TNV Al/Mg inverted dome tweeter.	6 1/2" (16.5cm) Polyglass mid-bass. 1" (25mm) TNV Al/Mg inverted dome tweeter.	5" (14cm) Polyglass woofer. 5" (14cm) Polyglass mid-bass. 1" (25mm) TNV Al/Mg inverted dome tweeter.	6 1/2" (16.5cm) Polyglass woofer. 6 1/2" (16.5cm) Polyglass mid-bass. 1" (25mm) TNV Al/Mg inverted dome tweeter.
• Frequency response (±3dB)	65Hz - 28kHz	55Hz - 28kHz	52Hz - 28kHz	50Hz - 28kHz
• Low frequency point (-6dB)	57Hz	47Hz	43Hz	41Hz
• Sensitivity (2.83V/1m)	89dB	90dB	91dB	91.5dB
• Nominal impedance	8 Ohms	8 Ohms	8 Ohms	8 Ohms
• Minimum impedance	3 Ohms	3.6 Ohms	4.2 Ohms	4.3 Ohms
• Crossover frequency	3 000Hz	3 000Hz	300Hz / 3 000Hz	300Hz / 3 000Hz
• Recommended amplifier power	25 - 100W	25 - 120W	25 - 150W	40 - 200W
• Dimensions (HxWxD)	12 3/8" x 7 9/16" x 9 3/4" (315x192x248mm)	15 3/8" x 8 3/4" x 11 9/16" (390x222x293mm)	35 7/16" x 8 x 11 5/8" (900x201x295mm)	37 3/8" x 8 3/4" x 13 3/8" (950x222x340mm)
• Net weight	12.5lb (5.7kg)	18lb (8.2kg)	35.6lb (16kg)	45.1lb (20.5kg)

	Chorus 726 V <i>Wengé finish</i>	Chorus CC 700 V <i>Black Ash finish</i>	Chorus SR 700 V <i>Black satin finish</i>	Chorus SW 700 V <i>Amati finish</i>
• Type	3-way bass-reflex floor standing speaker.	2-way bass-reflex shielded center speaker.	2-way sealed bipolar effects speaker, Polyfix® wall bracket.	Active bass-reflex subwoofer.
• Drivers	2x6 1/2" (16.5cm) Polyglass woofers. 6 1/2" (16.5cm) Polyglass midrange. 1" (25mm) TNV Al/Mg inverted dome tweeter.	2x6 1/2" (16.5cm) Polyglass mid-bass. 1" (25mm) TNV Al/Mg inverted dome tweeter.	6 1/2" (16.5cm) Polyglass mid-bass. 1" (25mm) TNV Al/Mg inverted dome tweeter.	11" (27cm) Polyglass woofer.
• Frequency response (±3dB)	49Hz - 28kHz	61Hz - 28kHz	75Hz - 28kHz	36Hz - 160Hz
• Low frequency point (-6dB)	39Hz	52Hz	65Hz	29Hz
• Sensitivity (2.83V/1m)	91.5dB	91dB	90dB	Subwoofer features Adjustable 40Hz to 160Hz, phase inverter, Autopower, Life (mono) and Stereo input.
• Nominal impedance	8 Ohms	8 Ohms	8 Ohms	
• Minimum impedance	2.9 Ohms	5.2 Ohms	3.7 Ohms	
• Crossover frequency	300Hz / 3 000Hz	3 000Hz	3 000Hz	
• Recommended amplifier power	40 - 250W	25 - 200W	25 - 100W	300W (450W max.) BASH® amplifier
• Dimensions (HxWxD)	39x8 3/4" x 14 3/4" (990x222x375mm)	7 5/16" x 19 7/16" x 9" (185x493x229mm)	11 5/8" x 15 5/8" x 5 7/8" (295x398x149mm)	16 9/16" x 12 13/16" x 17 1/16" (420x326x433mm)
• Net weight	51.7lb (23.5kg)	16.5lb (7.5kg)	10.3lb (4.7kg)	33.7lb (15.3kg)



> 24" (60cm) optional Chorus S 700 V stand, black satin.



> Sib Jet Black.

Sib & Co

A new way of life and listening

Sib & Co is a product line for those who wish an audio-video system without sacrificing high-quality Focal sound: we didn't create the world reference loudspeaker the Grande Utopia Be by taking the easy road! Indeed, Sib & Co is a true line of three products, built with the same quality requirements as any other Focal product line, in order to guarantee the highest level of performance in this speaker category. Designed to offer unmatched facility of integration in all environments,

Sib & Co was conceived to be easy to live with day-to-day, with music or with home theatre soundtracks, thanks to its practical aspects and multiple mounting solutions on its stand or "On-Wall", beside a Plasma screen, for example. Because we couldn't let you buy a high-end flat panel and not give you the sound to go with it....



> Sib XL Jet Black and Sib Jet Black.



Sib XL was created to harmonize with Plasma and LCD flat screens. Sib XL is delivered with the Polyfix® wall mount, which allows vertical and horizontal installation. The Bop (short) and Hop (tall) stands are available as an option to make Sib XL a totally universal solution.



Since the creation of Sib in 2002, this little speaker remains a musical reference in the high quality playback of all categories such as two-channel, home theatre, back ground music and multiroom. Delivered with its own integrated stand-wall mount, or the Hip (tall) stand as an option.



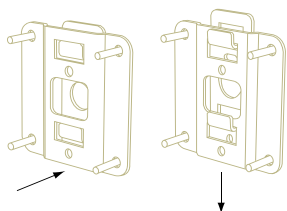
Thanks to its 8" (21cm) woofer and a 150W BASH® amplifier, the Cub 2 possesses unlimited resources for its small size. It is the natural complement to the speakers of the Sib & Co line for a marriage of integration and performance.

Sib XL*

• Type	2-way bass-reflex LCR speaker. Polyfix® wall bracket.	Sib*	2-way compact bass-reflex speaker.
• Drivers	2x5" (2x13cm) Polyflex mid-bass. 0AL 3/4" (19mm) aluminum tweeter dome.		5" (13cm) Polyflex mid-bass. 3/4" (19mm) mylar tweeter dome.
• Frequency response (±3dB)	67Hz - 35kHz		75Hz - 20kHz
• Low frequency point (-6dB)	59Hz		69Hz
• Sensitivity (2.83V/1m)	91dB		90dB
• Nominal impedance	8 Ohms		8 Ohms
• Minimum impedance	4 Ohms		4 Ohms
• Crossover frequency	3 500Hz		3 500Hz
• Recommended amplifier power	15 - 150W		15 - 75W
• Dimensions (HxWxD)	19 ^{7/8} x5 ^{5/8} x4 ^{1/4} " (505x142x108mm)		10 ^{3/4} x5 ^{3/16} x6 ^{7/16} " (247x142x164mm)
• Net weight	8.8lb (4kg)		4.6lb (2.1kg)

Cub 2**

• Type	Active bass-reflex subwoofer.
• Drivers	8" (21cm) Polyflex woofer.
• Frequency response (±3dB)	40Hz - 150Hz
• Low frequency point (-6dB)	32Hz
• Subwoofer features	Variable crossover 50Hz to 150Hz, phase inverter 0°/180°, Autopower, high/low level input, LFE input.
• Power amplifier	150W BASH® amplifier
• Dimensions (HxWxD)	13 ^{1/6} x11 ^{13/16} x11 ^{13/16} " (333x300x300mm)
• Net weight	22.2lb (11kg)



> Polyfix® standard wall fixing kit for Sib XL



> 35" (90cm) optional Hop* stand for Sib XL

> 35" (90cm) optional Hip* stand for Sib



> 14" (35cm) and 7" (17cm) optional Bop stand for Sib XL



> Pack Sib 5.1*

* Available in Jet Black and Pearl White finishes.

** Available in Jet Black Finish, Pearl White finish only for 5.1 pack.



> When flush-fitting is not possible, the In-Wall Electra loudspeakers (IW 1003 Be, IW 1002 Be and IW 1002) offer the unique possibility to be mounted On-Wall thanks to optional frames.



Custom solutions

The Focal sound, integrated

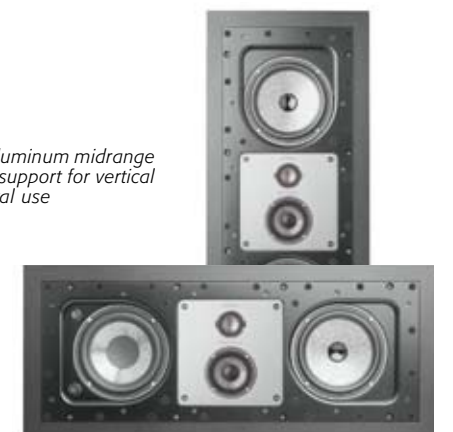
And now the Focal sound, but invisible. This is our new conquest the world of In-Wall and In-Ceiling. All our expertise as a world leader in high-end loudspeaker manufacturing was used to create new optimal integration solutions whilst preserving absolutely extraordinary performance. Inverted-dome tweeters in pure Beryllium or aluminium magnesium, "W" cone and Polyglass woofers, OPC crossovers... are all exclusive and recognized technologies that will guarantee a unique acoustic experience. Electra 1000 Be, Profile, Chorus V and Custom 100... All these models are

designed with the same attention to perfection as our free-standing speakers, developed by the same engineers, on the same production site and with the unique uncompromising drive. For all of these loudspeakers are developed by Focal. Permanent quality control, mastering of all the processes of manufacturing, creation of the best loudspeaker possible in its class, this is our engagement to offer you the most high-end speaker solution. For 2010, this line gets richer with two new outside loudspeakers.

> White or black lacquer or ready to be painted mounting frames for IW.



> Adjustable aluminum midrange and tweeter support for vertical and horizontal use





> 2010 new product, the Custom OD 108 outside loudspeaker.



True technology concentrate, the IW 1003 Be integrates the best of Focal: Beryllium IAL tweeter, latest generation W cones, OPC filtering, passive radiator, this reference loudspeaker is the high-end traditional alternative loudspeaker. On-Wall mounting available with optional frame.

The IW 1002 Be's sophisticated design enables it to compete with any high-end loudspeaker thanks to its pure Beryllium inverted dome tweeter and its latest generation W cone woofer loaded with integrated sealed volume. Available in IW 1002 version with Al/Mg tweeter.

In-Ceiling adaptation of the IW 1002, the Electra IC 1002 is a high-end loudspeaker, equipped with an exclusive coaxial driver, with W cone and Al/Mg tweeter, for maximum musicality and power handling. Perfect for a quality main system or as a high-end In-Ceiling effect speaker.

Two-way, In-Wall acoustic loudspeaker IW 706 V benefits from all the technology that came forth from the Chorus V line. A superior quality sound in stereo or multi-channel, and an extremely well-adapted surround speaker ready for the Chorus 700 V and 800 V speakers.

The In-Ceiling version of the IW 706 V, the Chorus IC 706 V revisits all the same technology with a 6 1/2" (16.5cm) Polyglass woofer, coaxial version of the TNV and "Wall Boost Control". It benefits from an update and evolution without concessions as does any Focal loudspeaker.



The IC 706 V ST is a stereo loudspeaker, perfect for small rooms, without losing any information from the left and right channels. Also recommended for the repetition of several identical emission sources, or as a simplified surround solution.

Bring the Focal sound to the outside is the vocation of the outdoor OD 706 V loudspeaker, waterproof and resistant to common weather conditions. Made on the model of the Chorus 706 V, the musical and technical performance is excellent, all this with a very compact size.

As in the entire Custom 100 line, the In-Wall IW 106 benefits drive-units from Focal Audiobile: power handling and high output, compatibility with damp environments, inverted dome tweeter and fibreglass cone make a 100% Focal product.

The most compact In-Ceiling solution with a 5" (13cm) woofer and an inverted dome, aluminium coaxial tweeter: ideal for small rooms, bedrooms or bathrooms, outside use or marine.

Fairly balanced with compact size, performance and bass reproduction, the IC 106 is the ultra multi-purpose and adaptable In-Ceiling loudspeaker thanks to its heritage and numerous possible settings. The true Focal sound at a competitive price.

With its 8" (21cm) fibreglass woofer, 91dB sensitivity, and very high power handling, the IC 108 recreates a large, powerful sound, capable of properly playing in rooms of very large dimensions.

	Electra IW 1003 Be	Electra IW 1002 Be (Electra IW 1002)	Electra IC 1002	Chorus IW 706 V	Chorus IC 706 V
• Type	3-way sealed enclosure In-Wall speaker.	2-way sealed enclosure In-Wall speaker.	2-way In-Ceiling speaker.	2-way In-Wall speaker.	2-way In-Ceiling speaker.
• Speakers	6 1/2" (16.5cm) "W" passive radiator. 6 1/2" (16.5cm) "W" woofer. 3" (8cm) "W" midrange. 1 1/4" (27mm) pure Beryllium IAL inverted dome tweeter.	6 1/2" (16.5cm) "W" midbass. 1 1/4" (27mm) pure Beryllium IAL inverted dome tweeter. [1 1/4" (27mm) Al/Mg inverted dome tweeter].	6 1/2" (16.5cm) "W" midbass. 1" (25mm) Al/Mg inverted dome tweeter.	6 1/2" (16.5cm) Polyglass midbass. 1" (25mm) Al/Mg TNC inverted dome adjustable tweeter.	6 1/2" (16.5cm) Polyglass midbass. 1" (25mm) Al/Mg TNC inverted dome adjustable tweeter.
• Frequency response (±3dB)	49Hz - 40kHz	60Hz - 40kHz (60Hz - 30.5kHz)	60Hz - 30.5kHz	65Hz - 28kHz	65Hz - 28kHz
• Sensitivity (2,83V/1m)	90dB	88dB	88dB	89dB	89dB
• Nom. impedance	8 Ohms	8 Ohms	8 Ohms	8 Ohms	8 Ohms
• Protection	Autoreset Polyswitch fuse	Autoreset Polyswitch fuse	Autoreset Polyswitch fuse	Autoreset Polyswitch fuse	Autoreset Polyswitch fuse
• Recommended amplifier power	25 - 240W	25 - 150W	25 - 150W	25 - 120W	25 - 120W
• Adjustment	Tweeter: - 3dB / 0dB / +3dB Medium: - 3dB / 0dB / +3dB	Tweeter: - 3dB / 0dB / +3dB	Tweeter: - 3dB / 0dB / +3dB	Tweeter: - 3dB / 0dB / +3dB	Tweeter: - 3dB / 0dB / +3dB
• Crossover frequency	400Hz - 2 000Hz	2 600Hz	2 600Hz	2 400Hz	2 400Hz
• Frame size (HxWxD)	27 9/16" x 11 3/4" x 4" (700x298x102mm)	16 3/8" x 11 3/4" x 4" (415x298x102mm)	Ø 10x3 3/4" (Ø 253x96mm)	12 5/8" x 9 1/4" x 3 3/4" (321x235x96mm)	Ø 10x3 3/4" (Ø 253x96mm)
• Cut-out dimensions (HxW)	26 1/8" x 10 3/8" (664x262mm)	14 7/8" x 10 3/8" (379x262mm)	Ø 8 11/16" (221mm)	11 1/3" x 8" (288x203mm)	Ø 8 11/16" (221mm)
• Depth from wall	3 7/8" (99mm)	3 7/8" (99mm)	3 5/8" (92mm)	3 5/8" (92mm)	3 5/8" (92mm)
• Net weight	22lb (10kg)	13.6lb (6.2kg)	4.6lb (2.1kg)	4.4lb (2kg)	4.2lb (1.9kg)

Chorus IC 706 V ST	Chorus OD 706 V	Custom IW 106	Custom IC 105	Custom IC 106	Custom IC 108
2-way stereo In-Ceiling speaker.	2-way closed outdoor speaker	2-way In-Wall speaker.	2-way In-Ceiling speaker.	2-way In-Ceiling speaker.	2-way In-Ceiling speaker.
6 1/2" (16.5cm) dual voice coil Polyglass midbass. 1" (25mm) dual Al/Mg TNV rotating inverted dome tweeter.	6 1/2" (16.5cm) Polyglass midbass. 1" (25mm) Al/Mg TNV inverted dome tweeter	6 1/2" (16.5cm) fibreglass midbass. 1" (25mm) aluminum inverted dome adjustable tweeter.	5" (13cm) fibreglass midbass. 1" (25mm) aluminum inverted dome tweeter.	6 1/2" (16.5cm) fibreglass midbass. 1" (25mm) aluminum inverted dome adjustable tweeter.	8" (21cm) fibreglass midbass. 1" (25mm) aluminum inverted dome adjustable tweeter.
65Hz - 28kHz	60Hz - 28kHz	60Hz - 20kHz	65Hz - 20kHz	60Hz - 20kHz	50Hz - 20kHz
89dB	90dB	89dB	88dB	89dB	91dB
2x8 Ohms	8 Ohms	8 Ohms	8 Ohms	8 Ohms	8 Ohms
Autoreset Polyswitch fuse	Autoreset Polyswitch fuse	Autoreset Polyswitch fuse	Autoreset Polyswitch fuse	Autoreset Polyswitch fuse	Autoreset Polyswitch fuse
25 - 120W	25 - 120W	10 - 120W	10 - 100W	10 - 120W	10 - 140W
-	-	-3dB / 0dB / +3dB	-3dB / 0dB / +3dB	-3dB / 0dB / +3dB	-3dB / 0dB / +3dB
2 400Hz	3 000Hz	3 300Hz	3 300Hz	3 300Hz	3 300Hz
Ø 10x3 3/4" (Ø 253x96mm)	11 15/16" x 8 1/2" x 7 9/16" (304x216x192mm)	12 3/16" x 8 1/8" x 2 15/16" (310x207x74mm)	Ø 7 7/8" x 3 7/16" (200x87mm)	Ø 9 9/16" x 3 3/16" (243x81mm)	Ø 11 1/8" x 4 1/8" (282x105mm)
Ø 8 11/16" (221mm)	-	10 5/8" x 6 11/16" (273x170mm)	Ø 6 1/2" (165mm)	Ø 8 3/16" (208mm)	Ø 9 11/16" (246mm)
3 7/8" (99mm)	-	2 13/16" (71mm)	3 5/16" (84mm)	3 1/16" (78mm)	4" (102mm)
4.4lb (2kg)	7lb (3.2kg)	3.4lb (1.6kg)	2.3lb (1.1kg)	3.4lb (1.6kg)	5.5lb (2.5kg)