



# EQUIPMENT

## catalog



316 Hart Street, Watertown, WI 53094 • Customer Service 800.424.1075





# Warewash

## Freedom Systems

- Freedom System™ L2 ..... 9
- Freedom System™ L3 ..... 10
- Freedom System™ L1 + P1 ..... 11
- Freedom System™ L2 + P1 ..... 12
- Freedom System™ L3 + P1 ..... 13
- Freedom System™ HB L2 ..... 14
- Freedom System™ HB L3 ..... 15
- Freedom System™ HB L1 + P1 ..... 16
- Freedom System™ HB L2 + P1 ..... 17
- Freedom System™ DE Retro ..... 18
- Freedom System™ Specialties ..... 19

## Additional Dispensing

- Tahoe ..... 20
- Ultra Active® Specialties Dispenser ..... 21
- Jug Pumps ..... 22

## Faucet Feeders

- 167 Faucet Feeder with Slide Bar ..... 23
- 154 Faucet Feeder with Vacuum Breaker Push Button ..... 23

## Wall Pumps

- 301 C Chlorine Dispenser ..... 24
- 301 B Pot N' Pan Soap Dispenser ..... 24
- 616 Pot N' Pan Soap Dispenser ..... 24

## Fittings

- Copper Fittings ..... 25
- Injection Fittings ..... 26

## Electrical Replacement Parts

- Freedom System™ Circuit Board ..... 27
- Freedom System™ 60W Power Supply ..... 27
- Solenoid Repair Kit ..... 27
- 24V DC Solenoid ..... 27
- 440 to 120V Step-Down Transformer ..... 27

## Warewash Accessories

- Remote Pressure Switch ..... 28
- 5 Gallon Low Level Standpipe with Float Switch ..... 28
- 1 Gallon Standpipe with Float Switch ..... 28
- 2.5 Gallon Standpipe with Check Valve ..... 28
- Button Probe ..... 28
- Button Probe Kit ..... 28
- Thermal Sensor Probe for DE Units ..... 28



Manuals for equipment may also be found online at:  
[uschemical.com/resources/manuals](http://uschemical.com/resources/manuals)



# Laundry

## Laundry Systems

Lin N' Logic™ Dispenser .....	32
ChemLogic Dispenser .....	33
ChemMaster™ 4 Laundry System .....	34
ChemMaster™ 5 Laundry System .....	35
ChemMaster™ 6 Laundry System .....	36
Manifold with Vacuum Breaker Kit .....	37
ChemMaster™ 2 Conversion Special.....	39

## Replacement Parts

Lin N' Logic™ and ChemLogic Parts .....	38
ChemMaster Parts.....	39

## Laundry Kits

Laundry 4 Install Kit .....	40
Laundry 5 Install Kit .....	41
Laundry 6 Install Kit .....	42
Ultra Laundry 4 Install Kit.....	43
Ultra Laundry 5 Install Kit.....	44

## Fittings

Laundry Fittings.....	45
-----------------------	----



**U S Chemical**

## Orders

To place an equipment order, please contact the Customer Service Department.

**Phone:** 1-800-424-1075

**Email:** [usc.customerservice@diversey.com](mailto:usc.customerservice@diversey.com)

## Support

U S Chemical's Training Department is available for assistance with chemical, cleaning, equipment, installation or service-related questions. They handle both phone diagnostics and technical service requests for hundreds of specialists from distributors nationwide.

For further information, please contact the U S Chemical Training Department.

**Phone:** 1-800-424-3068

**Email:** [usc.customerservice@diversey.com](mailto:usc.customerservice@diversey.com)



# Specialty Dispensers and Accessories

## Specialty Dispensers

One Shot™ Dispenser	48
Dema® MixMATE™	49
Dema® Low Flow Proportioner	50
Dema® High Flow Proportioner	51
AccuDose® 2B Select	52
AccuDose® Select 4+1	53
Hydro High Flow Dispenser	54
Hydro Low Flow Dispenser	55
Dema® PF651 ProFill 1 Single Dispenser	56
Dema® PF652 ProFill 2 Dual Dispenser	57
Dema® 606T Select-O-Spray Dispenser	58
Seko OPL Mini L Dispenser	59
Beta SingleShot Dispenser	60
Beta Dual SingleShot Dispenser	61
DR2000 115 V Dispenser	62
DR2000 D-Cell Dispenser	63
Sink Mate Faucet Adapter Kit	64

## Accessories

Motor and Pump Head Replacements	65
Delivery Caps	66
Spray Bottles and Sprayers	66
Flo-Thru Device	66
15 Gallon Drum Wrench	66
Foot Valves	66
Standpipes	67
Tubing and Hoses	68
Metering Tips	70
Hand Soap Dispensers and Accessories	71
Air Freshener Dispenser	71
Bottle Wall Brackets and Shelving	72
Test Kits and Replacements	74
Total Test Kit Refills	75
Test Strips and Temperature Tape	76
Equipment Stickers	77
Standpipe Line Tags	78



Manuals for equipment may also be found online at:  
[uschemical.com/resources/manuals](https://www.uschemical.com/resources/manuals)



# Warewash







# Freedom System™ L2



Number	Part Description	Part Number
All Shown	Freedom System™ L2	D1228154
1	1/4" ID Polyflow Tubing @ 15'	D011472
2	7 Conductor Wire (Per Foot)	D3336239
3	1/4" Poly x 1/8" NPT Nylon Check Valve - <i>Available from Seko</i>	D051466
4	3/16" ID x 3/8" OD Tan Santoprene Tube @ 8"	D011585
5	Silicone Grease, 1/2 Ounce Packet	D1225424
6	Warewash Detergent Standpipe Tag	D014141
7	Warewash Rinse Standpipe Tag	D014144
8	Bulkhead Fitting, 7/8" ID X 1/4" OD (Detergent Injection)	D022031
	Replacement Freedom Face Label	D1227546



# Freedom System™ L3



Number	Part Description	Part Number
All Shown	Freedom System™ L3	D1228155
1	1/4" ID Polyflow Tubing @ 15'	D011472
2	7 Conductor Wire (Per Foot)	D3336239
3	Bulkhead Fitting, 7/8" ID X 1/4" OD (Detergent Injection)	D022031
4	3/16" ID x 3/8" OD Tan Santoprene Tube @ 8"	D011585
5	Silicone Grease, 1/2 Ounce Packet	D1225424
6	Warewash Detergent Standpipe Tag	D014141
7	Warewash Rinse Standpipe Tag	D014144
8	Warewash Sanitizer Standpipe Tag	D014147
9	1/4" Poly x 1/8" NPT Nylon Check Valve - <i>Available from Seko</i>	D051466
	Replacement Freedom Face Label	D1227546

# Freedom System™ L1 + P1



Number	Part Description	Part Number
All Shown	Freedom System™ L1 + P1	D1228156
1	1/4" ID Polyflow Tubing @ 15'	D011472
2	1/4" Copper Tubing Roll @ 10'	D011459
3	7 Conductor Wire (Per Foot)	D3336239
4	3/16" ID x 3/8" OD Tan Santoprene Tube @ 8"	D011585
5	Silicone Grease, 1/2 Ounce Packet	D1225424
6	Warewash Rinse Standpipe Tag	D014144
7	1/4" Poly x 1/8" NPT Nylon Check Valve - <i>Available from Seko</i>	D051466
	Replacement Freedom Face Label	D1227546



# Freedom System™ L2 + P1



Number	Part Description	Part Number
All Shown	Freedom System™ L2 + P1	D1228157
1	1/4" ID Polyflow Tubing @ 15'	D011472
2	1/4" Copper Tubing Roll @ 10'	D011459
3	7 Conductor Wire (Per Foot)	D3336239
4	3/16" ID x 3/8" OD Tan Santoprene Tube @ 8"	D011585
5	Silicone Grease, 1/2 Ounce Packet	D1225424
6	Warewash Rinse Standpipe Tag	D014144
7	Warewash Sanitizer Standpipe Tag	D014147
8	1/4" Poly x 1/8" NPT Nylon Check Valve - <i>Available from Seko</i>	D051466
	Replacement Freedom Face Label	D1227546



# Freedom System™ L3 + P1



Number	Part Description	Part Number
All Shown	Freedom System™ L3 + P1	D1228158
1	¼" ID Polyflow Tubing @ 15'	D011472
2	¼" Copper Tubing Roll @ 10'	D011459
3	7 Conductor Wire (Per Foot)	D3336239
4	¾" ID x ¾" OD Tan Santoprene Tube @ 8"	D011585
5	Silicone Grease, ½ Ounce Packet	D1225424
6	Warewash Detergent Standpipe Tag	D014141
7	Warewash Rinse Standpipe Tag	D014144
8	Warewash Sanitizer Standpipe Tag	D014147
9	¼" Poly x ⅛" NPT Nylon Check Valve - <i>Available from Seko</i>	D051466
	Replacement Freedom Face Label	D1227546



# Freedom System™ HB L2



Number	Part Description	Part Number
All Shown	Freedom System™ HB L2	D1229266
1	1/4" ID Polyflow Tubing @ 15'	D011472
2	7 Conductor Wire (Per Foot)	D3336239
3	1/4" Poly x 1/8" NPT Nylon Check Valve - <i>Available from Seko</i>	D051466
4	Bulkhead fitting, 7/8" ID x 1/4" OD (Detergent Injection)	D022031
5	Warewash Detergent Standpipe Tag	D014141
6	Warewash Rinse Standpipe Tag	D014144
	Replacement Freedom HB Face Label	D1229955

# Freedom System™ HB L3



Number	Part Description	Part Number
All Shown	Freedom System™ HB L3	D1229267
1	1/4" ID Polyflow Tubing @ 15'	D011472
2	7 Conductor Wire (Per Foot)	D3336239
3	1/4" Poly x 1/8" NPT Nylon Check Valve - <i>Available from Seko</i>	D051466
4	Bulkhead fitting, 7/8" ID x 1/4" OD (Detergent Injection)	D022031
5	Warewash Detergent Standpipe Tag	D014141
6	Warewash Rinse Standpipe Tag	D014144
7	Warewash Sanitizer Standpipe Tag	D014147
	Replacement Freedom HB Face Label	D1229955



# Freedom System™ HB L1 +P1



Number	Part Description	Part Number
All Shown	Freedom System™ HB L1 + P1	D1229268
1	1/4" ID Polyflow Tubing @ 15'	D011472
2	1/4" Copper Tubing Roll @ 10'	D011459
3	7 Conductor Wire (Per Foot)	D3336239
4	Warewash Rinse Standpipe Tag	D014144
5	1/4" Poly x 1/8" NPT Nylon Check Valve - <i>Available from Seko</i>	D051466
	Replacement Freedom HB Face Label	D1229955



# Freedom System™ HB L2 + P1



**NOTICE TO DISHMACHINE OPERATOR**  
 THE OPERATIONAL MODE OF THIS DISHMACHINE HAS BEEN CHANGED TO LOW TEMPERATURE SANITIZATION.  
 WASH TEMPERATURES SHOULD BE ..... F.  
 RINSE TEMPERATURES SHOULD BE ..... F.  
 AVAILABLE CHLORINE, FINAL RINSE ..... 50 ppm. minimum  
 100 ppm. maximum  
 BE SURE SANITIZER CONTAINER IS NOT EMPTY.  
 CHECK AVAILABLE CHLORINE WITH APPROPRIATE TEST STRIPS OR KIT.  
 CONTACT YOUR CHEMICAL SUPPLIER FOR SERVICE.

Number	Part Description	Part Number
All Shown	Freedom System™ HB L3	D1230046
1	1/4" ID Polyflow Tubing @ 15'	D011472
2	1/4" Copper Tubing Roll @ 10'	D011459
3	7 Conductor Wire (Per Foot)	D3336239
4	Warewash Rinse Standpipe Tag	D014144
5	Warewash Sanitizer Standpipe Tag	D014147
6	1/4" Poly x 1/8" NPT Nylon Check Valve - <i>Available from Seko</i>	D051466
	Replacement Freedom HB Face Label	D1229955

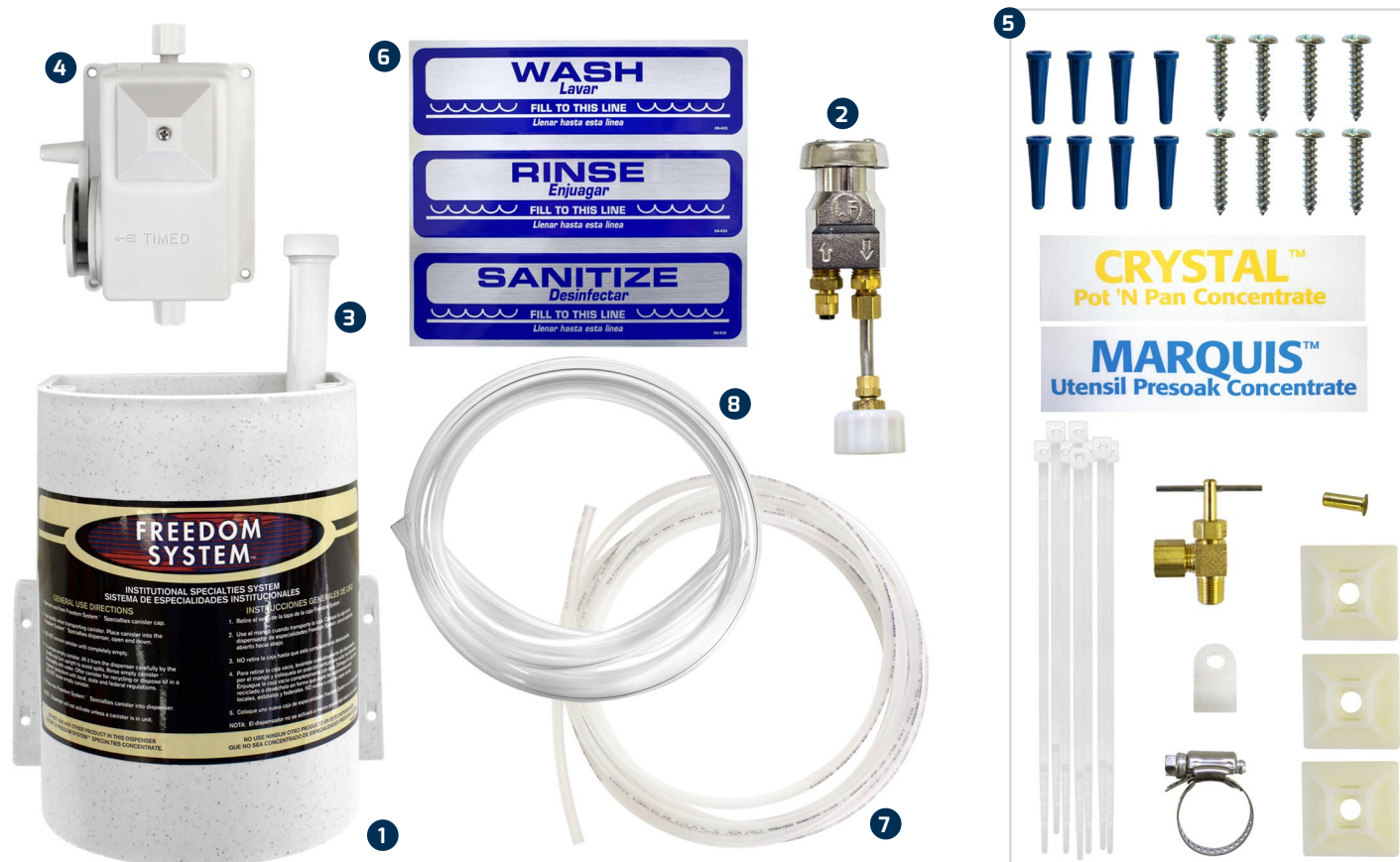


# Freedom System™ DE Retro



Number	Part Description	Part Number
All Shown	Freedom System™ DE Retro with Tubing and Kit	D3338568
1	Vacuum Breaker Assembly	D014467
2	PVC Tubing, 5/8" ID x 7/8" OD @ 5'	D011381
3	1/4" Polyflow Tubing @ 8'	D011452
4	Freedom Retro Spray Arm with Nozzle	D014449
5	Retro Parts Kit Only	D011773
1 + 4	Retro Spray Arm with Vacuum Breaker	D014450

# Freedom System™ Specialties



Number	Part Description	Part Number
All Shown	Freedom System™ Specialties	D014541
1 + 2	Specialty Retro Only	D014716
2	Vacuum Breaker Assembly	D014467
3	Freedom Retro Spray Arm with Nozzle	D014449
2 + 3	Retro Spray Arm with Vacuum Breaker	D014450
4	Mechanical Timer (0-1 Minute)	D011492
5	Specialty Freedom Parts Kit	D011780
6	Sink Water Level Sticker Set	D014125
7	1/4" ID Polyflow Tubing @ 15'	D011472
8	PVC Tubing 5/8" ID x 7/8" OD @ 5'	D011381



# Tahoe

1



2



3



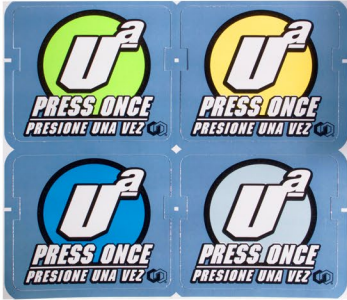
4



Number	Part Description	Part Number
1	Tahoe Detergent 220 or 110 V	D1205356
1a	EDPM Detergent Tubing	D058550
2	Squeeze Tube Housing	D1206740
3	Sanitizer Flextube 1/4" Polyflow Connections <b>Add for Sanitizer Injection</b>	D1203652
4	1/4" Poly x 1/8" NPT Check Valve <b>Add for Sanitizer Injection</b>	D051466



# Ultra Active® Specialties Dispenser



Number	Part Description	Part Number
All Shown	Ultra Active® Specialties Dispenser	D4055105
1	Sink Water Level Sticker Set	D014125



# Jug Pumps



Number	Part Description	Part Number
1	P101 5 Gallon Pail Pump (Dispenses 1 Ounce)	D014245
2	2.5 Gallon Jug Pump (Dispenses 1/2 to 1 Ounce)	D014315
3	1.5 Gallon Jug Pump	D6137307
4	P012 1 Gallon Jug Pump (Dispenses 1 Ounce)	D014246
5	1 Gallon Jug Pump (Dispenses 1/4 Ounce)	D1229552
6	P104 15/50/55 Gallon Drum Pump (Dispenses 2 to 8 Ounces)	D014248

# Faucet Feeders



Number	Part Description	Part Number
1	167 Faucet Feeder with Slide Bar	D014243
2	154 Faucet Feeder with Vacuum Breaker Push Button	D014244



# Wall Pumps

1



2



3



Number	Part Description	Part Number
1	301 C Chlorine Dispenser, 1 Ounce	D014265
2	301 B Pot N' Pan Soap Dispenser, 1 Ounce	D014240
3	616 Pot N' Pan Soap Dispenser, 1 Ounce	D014337

# Copper Fittings



Number	Part Description	Part Number
1	Brass 3/16" Poly x 1/8" NPT	D011407
2	3/16" Sleeve and Nut for #1	D011408
3	1/4" Compression Nut	D011458
4	1/4" Compression Sleeve	D011456
5	1/4" CC x 1/4" MPT Brass Straight	D011374
6	1/4" CC x 1/8" NPT Needle Valve	D011372
7	1/4" Poly x 1/4" MPT Brass Straight	D011397
8	1/4" Poly Sleeve with Brass Nut	D011462



# Injection Fittings

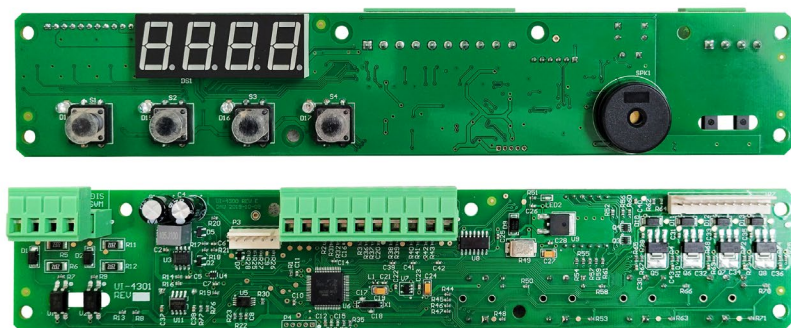


Number	Part Description	Part Number	Number	Part Description	Part Number
1	Rubber Overflow Washer	D011701	8	3/16" Poly x 1/8" NPT Brass Straight	D011407
2	Plastic Overflow Washer	D011723	8a	3/16" Nut and Sleeve Replacement for #8	D011408
3	Basin Nut	D011702	9	P6TS4 Tube Support	D011436
4	Angle Overflow Barb	D011389	10	1/4" Poly x 1/8" NPT Nylon Straight	D011414
5	3/8" Poly x 1/2" MPT Straight	D011430	11	Brass Saddle Clamp	D011377
6	1/4" Hose Barb for Vinyl Tubing	D011429	12	Stainless 3/16" Poly x 1/8" NPT Straight	D011432
7	1/4" Poly x 1/8" NPT Stainless Steel Rinse Check Valve	D011550	13	1/4" Poly x 1/8" NPT Nylon Check Valve <i>Available from Seko</i>	D051466
			14	Bulkhead fitting, 7/8" ID X 1/4" OD (Detergent Injection)	D022031

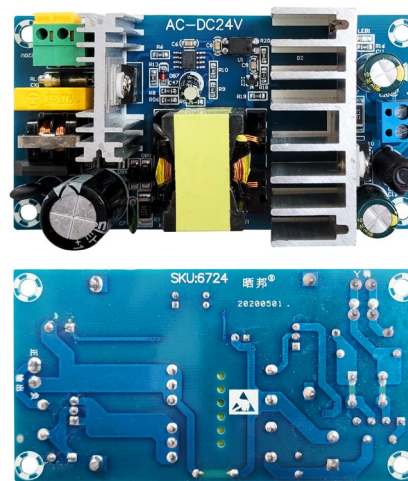


# Electrical Replacement Parts

1



2



3



4



5



Number	Part Description	Part Number
1	Freedom System™ Circuit Board	D1227446
2	Freedom System™ 60W Power Supply	D1227448
3	Solenoid Repair Kit	D011590
4	24V DC Solenoid	D3719301
5	440 to 120V Step-Down Transformer	D011002



# Warewash Accessories



Number	Part Description	Part Number
1	Remote Pressure Switch	D011771
2	5 Gallon Low Level Standpipe with Float Switch	D014498
3	1 Gallon Standpipe with Float Switch	D014497
4	2.5 Gallon Standpipe with Check Valve	D014311
5	Button Probe Only	D011770
6	Button Probe Kit	D1228164
7	Thermal Sensor Probe for DE Units	EQ0099926







A close-up photograph of a rolled-up white towel on a wooden surface. The towel is the primary focus, showing its soft, textured fibers. The background is a plain, light-colored wall, and the wooden surface is in the foreground, providing a natural, warm setting. The lighting is soft and even, highlighting the texture of the towel.

# Laundry



# Lin N' Logic™ Dispenser



Number	Part Description	Part Number
All	Lin N' Logic 5 Product Venturi Laundry Dispenser with MI (Machine Interface)	D1227065

*See Page 38 for Replacement Parts*



# ChemLogic™ Dispenser



Number	Part Description	Part Number
All	ChemLogic™ 5 Laundry System	D1229726

*See Page 38 for Replacement Parts*



# ChemMaster™ 4 Laundry System



Number	Part Description	Part Number
All Shown	ChemMaster™ 4 Laundry System	D4167650
1	ChemMaster™ 2 Cables @ 20'	D4166622
2	120V/24V Plug In Transformer	D011234
3	ChemMaster™ 2 Display with Film	D4195247
4	3/16" ID x 3/8" OD Tygon 900 Tubing, 9" Pieces	D015236
5	Silicone Grease, 1/2 Ounce Packet	D1225424
6	Isolation Module 2 Complete	D4166876

*See Page 39 for Replacement Parts*

# ChemMaster™ 5 Laundry System



Number	Part Description	Part Number
ALL	ChemMaster™ 5 Laundry System	D4167668
1	ChemMaster™ 2 Cables @ 20'	D4166622
2	120V/24V Plug In Transformer	D011234
3	ChemMaster™ 2 Display with Film	D4195247
4	3/16" ID x 3/8" OD Tygon 900 Tubing, 9" Pieces	D015236
5	Silicone Grease, 1/2 Ounce Packet	D1225424
6	Isolation Module 2 Complete	D4166876

*See Page 39 for Replacement Parts*



# ChemMaster™ 6 Laundry System



Number	Part Description	Part Number
All Shown	ChemMaster™ 6 Laundry System	D4167676
1	ChemMaster™ 2 Cables @ 20'	D4166622
2	120V/24V Plug In Transformer	D011234
3	ChemMaster™ 2 Display with Film	D4195247
4	3/16" ID x 3/8" OD Tygon 900 Tubing, 9" Pieces	D015236
5	Silicone Grease, 1/2 Ounce Packet	D1225424
6	Isolation Module 2 Complete	D4166876

*See Page 39 for Replacement Parts*



# Manifold with Vacuum Breaker Kit



Number	Part Description	Part Number	Number	Part Description	Part Number
All Shown	Manifold with Vacuum Breaker and Kit	D4964763	9	11 3/4" Manifold Bracket	D015225
1 + 2	Manifold Tubing, Wire and Parts Kit	D011941	10	1/8" Poly Male Plug	D011448
1a	3/8" Polyflow Tubing (Per Foot)	D011386	11	1/4" ID x 3/8" OD PVC Tubing (Per Foot)	D011413
1b	1/4" Copper Tubing @ 10'	D011459	12	1/4" Hose Barb Fitting	D011429
1c	2 Conductor Wire (Per Foot)	D011003	13	1/4" Watts Vacuum Breaker	D011517
2	Manifold Parts Kit Only	D011947	14	1/4" CC x 1/4" MPT Brass Straight	D011374
3	Manifold with Vacuum Breaker Only	D4630923	15	1/4" Stainless Steel Tube @ 6"	D4946645
4	1/8" NPT x 1/4" Barb Check Valve	D011667	16	1/4" CC x 1/4" MPT 90° Elbow	D011375
5	1/4" Poly x 1/8" NPT	D011465	17	1/4" FPT x 1/4" MPT Adapter	D4954725
6	24V DC Solenoid Valve	D011737	18	3/8" Polyflow Tubing (Per Foot)	D011386
7	Square Manifold Tube @ 11 3/4"	D015227	19	3/8" Poly x 1/4" MPT Brass Straight	D4954717
8	3/8" Poly x 3/8" NPT Straight	D011425			



# Replacement Parts

1



2



3



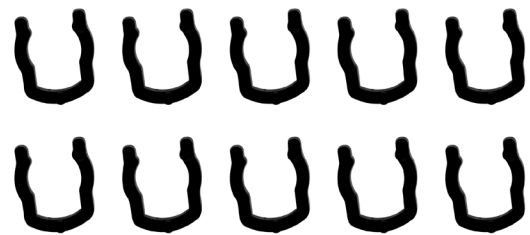
4



5

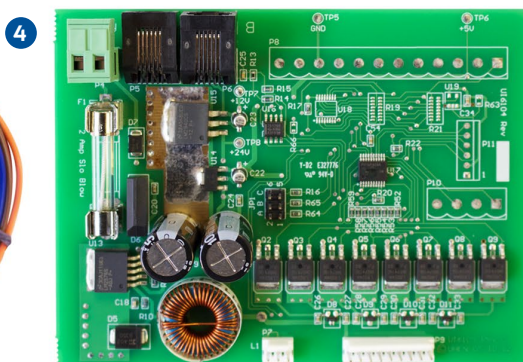


6



Number	Part Description	Part Number
1	ChemLogic Display with Film	D1229725
2	ChemLogic Isolation Module	D1229496
3	ChemLogic Plug in Transformer	D1229928
4	1/4" Barb x 1/4" FPT Aflas check valve (5 pack, new style)	D1228859
5	Breather Valve 1/4" with Elbow and Clip	D1230120
6	Black Clips (10 pack)	D1228858

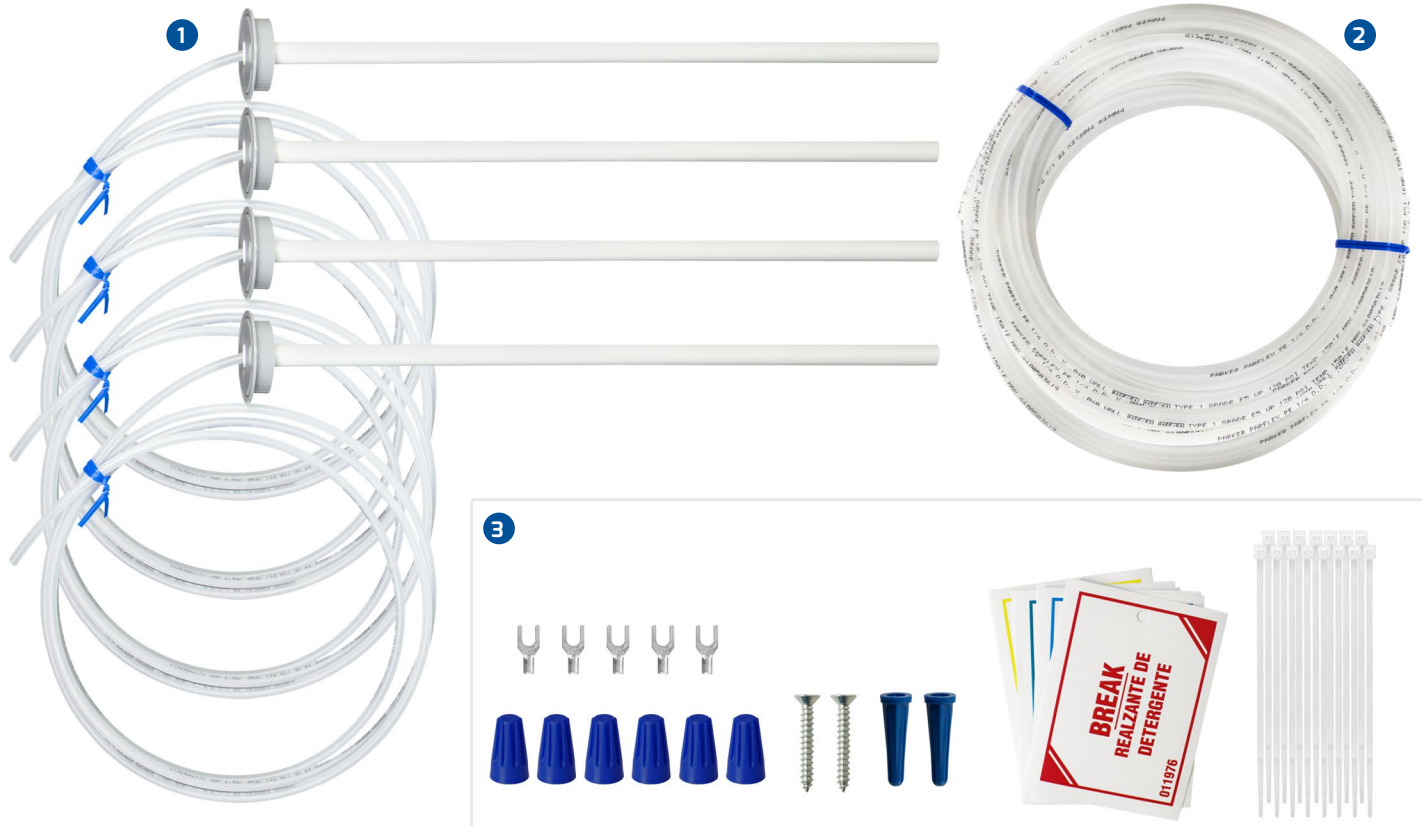
# Replacement Parts



Number	Part Description	Part Number	Number	Part Description	Part Number
1-5	ChemMaster™ 2 Conversion Special	D4331000	5	ChemMaster™ 2 Cable @ 20'	D4166622
1	ChemMaster™ 2 Display with Film	D4195247	6	Laptop Interface Cable (USB Port)	D4997936
2	ChemMaster™ 2 Panel Film	D4121555	7	Laptop Interface Cable (Serial Port)	D4114638
3	Isolation Module 2 Complete	D4166876	8	ChemMaster™ / ChemLogic 9V Pigtail Connector	D1230224
4	ChemMaster™ 2 Power Supply Board	D3405708			



# Laundry 4 Install Kit

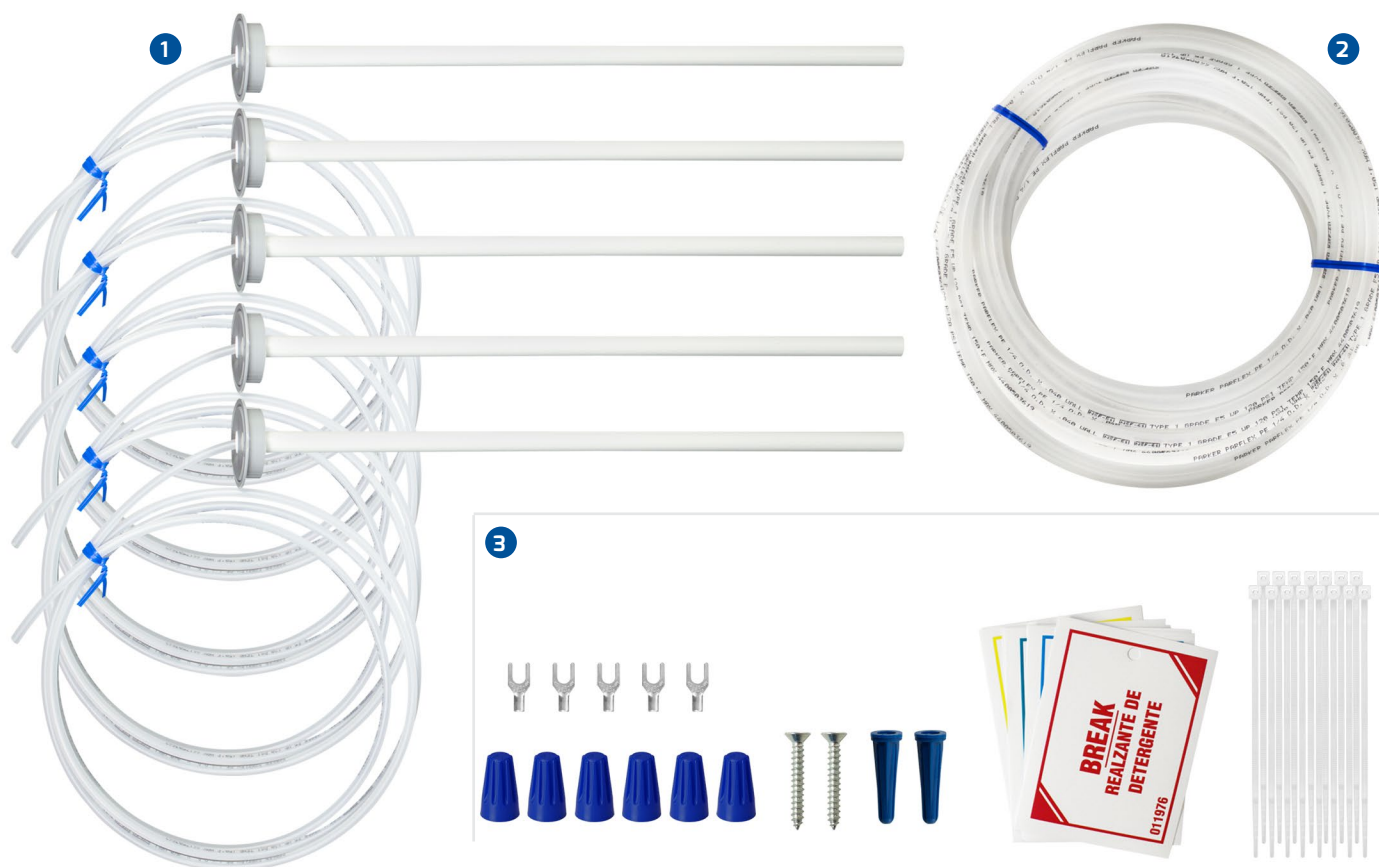


Number	Part Description	Part Number
All	Laundry 4 Install Kit (Less Transformer)	D011819
1	5 Gallon Standpipe with 1/4" Polyflow Tubing	D014499
2	1/4" Polyflow Tubing, 100' Roll	D011479
3	ChemMaster™ Laundry Parts Kit	D011786

*Kit includes English/Spanish line tags for: Break, Built Detergent, Suds, Destainer, Oxygen Bleach, Size, Sour, Sour 'N Soft, Sour 'N Rust Remover*



# Laundry 5 Install Kit

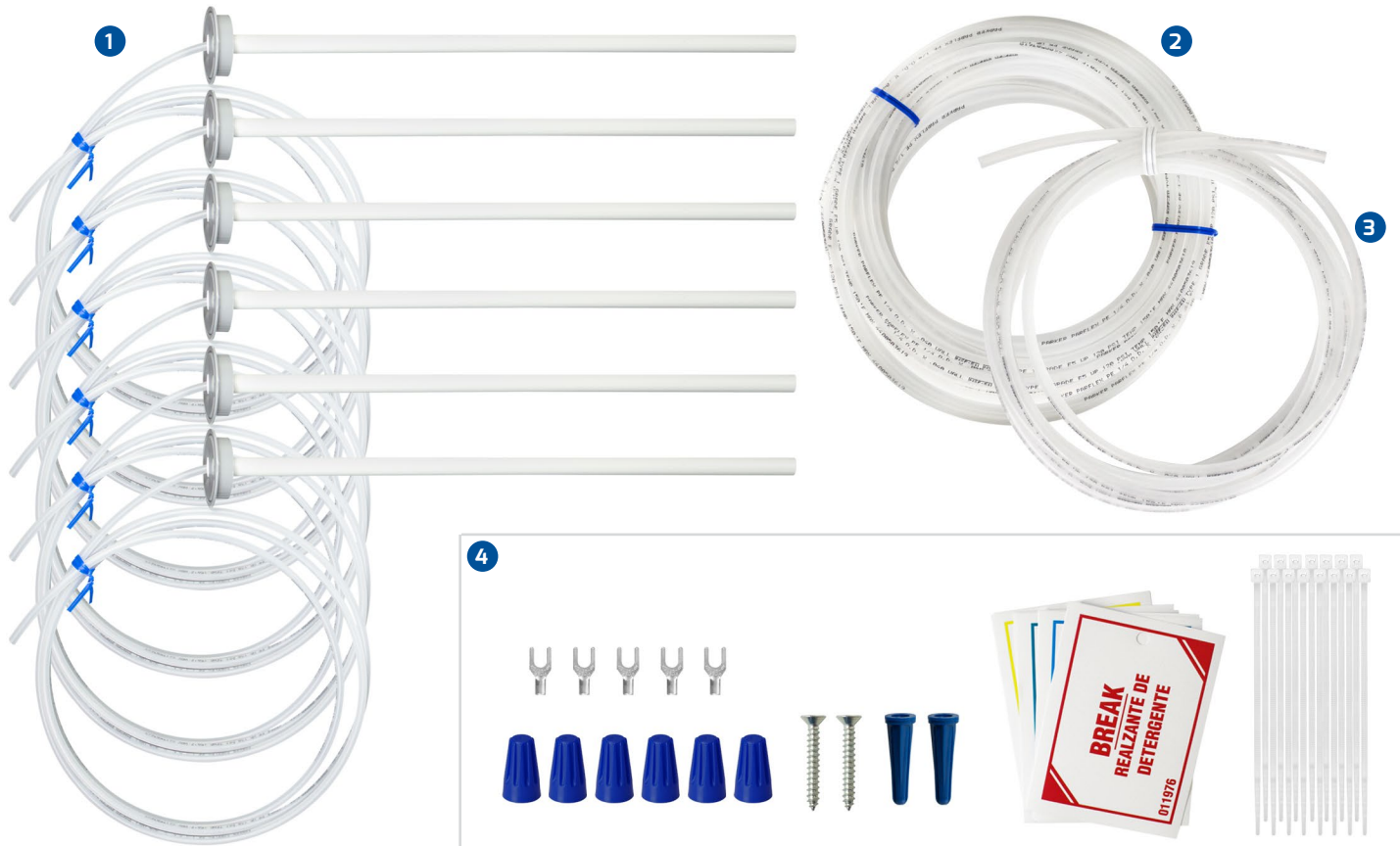


Number	Part Description	Part Number
All	Laundry 5 Install Kit (Less Transformer)	D011820
1	5 Gallon Standpipe with 1/4" Polyflow Tubing	D014499
2	1/4" Polyflow Tubing, 100' Roll	D011479
3	ChemMaster™ Laundry Parts Kit	D011786

*Kit includes English/Spanish line tags for: Break, Built Detergent, Suds, Destainer, Oxygen Bleach, Size, Sour, Sour 'N Soft, Sour 'N Rust Remover*



# Laundry 6 Install Kit



Number	Part Description	Part Number
All	Laundry 6 Install Kit (Less Transformer)	D011821
1	5 Gallon Standpipe with 1/4" Polyflow Tubing	D014499
2	1/4" Polyflow Tubing, 100' Roll	D011479
3	1/4" Polyflow Tubing, 25' Roll	D011476
4	ChemMaster™ Laundry Parts Kit <i>Kit includes English/Spanish line tags for: Break, Built Detergent, Suds, Destainer, Oxygen Bleach, Size, Sour, Sour 'N Soft, Sour 'N Rust Remover</i>	D011786

# Ultra Laundry 4 Install Kit



Number	Part Description	Part Number
All	Ultra Laundry 4 Install Kit with Standpipe	D011839
1	2.5 Gallon Standpipe with Check and PVC Tubing	D014311
2	1/4" Polyflow Tubing, 100' Roll	D011479
3	Hose Barb Fitting	D011429
4	ChemMaster™ Laundry Parts Kit <i>Kit includes English/Spanish line tags for: Break, Built Detergent, Suds, Destainer, Oxygen Bleach, Size, Sour, Sour 'N Soft, Sour 'N Rust Remover</i>	D011786



# Ultra Laundry 5 Install Kit



Number	Part Description	Part Number
All	Ultra Laundry 5 Install Kit with Standpipe	D011840
1	2.5 Gallon Standpipe with Check and PVC Tubing	D014311
2	1/4" Polyflow Tubing, 100' Roll	D011479
3	Hose Barb Fitting	D011429
4	ChemMaster™ Laundry Parts Kit <i>Kit includes English/Spanish line tags for: Break, Built Detergent, Suds, Destainer, Oxygen Bleach, Size, Sour, Sour 'N Soft, Sour 'N Rust Remover</i>	D011786



# Laundry Fittings



Number	Part Description	Part Number
1	1/4" Polyflow Compression Union Tee	D011428
2	1/4" FPT x 1/4" MPT Hastoloy Check Valve	D011668
3	1/8" NPT x 1/4" Barb Check Valve	D011667
4	5/16" Check Valve In Line	D011679
5	1/4" Y Barb Tubing Connector	D011431
6	1/4" Tubing Hose Barb	D011429
7	1/4" Barb Tee Connector	D011422
8	1/4" Barb Union x 3/8" Barb	D4347765





# Specialty Dispensers and Accessories







# One Shot™ Dispenser



Number	Part Description	Part Number
All Shown	One Shot™ Dispenser	D4208360



# Dema® MixMATE™



Number	Part Description	Part Number
1	Dema® High Flow Proportioner with Action Gap	D3352909
2	Dema® Low Flow Proportioner with Action Gap	D3352896
3	Dema® Metering Tip Kit Only	D014333
Not Shown	MixMATE™ Label Set - <i>See Page 77</i>	D014322
4	MixMATE™ Standpipe Tag Set A-L	D014307
5	MixMATE™ Standpipe Tag Set M-U	D5835251
6	3.5 GPM Outer Discharge Tube	D015199
7	Dema® Capillary Metering Tip For Use with 10% Quat Sanitizers - <i>Special Order, See Page 70</i>	D014355



# Dema® Low Flow Proportioner



- Sanitizer  
Desinfectante
- All Purpose  
Cleaner  
Limpiador de Multi-Use
- Glass  
Cleaner  
Limpiador de Vidrio
- Degreaser  
Desengrasador
- Floor Cleaner  
Limpiador de Pisos
- Disinfectant  
Desinfectante

**DEMA ENGINEERING COMPANY**  
100-15K METERING TIP KIT FOR 3/8" HOSE BARBS  
10020 Big Bend Blvd., St. Louis, MO 63122  
Phone: (314) 966-3533 Toll Free: (800) 325-3362 Fax: (314) 965-8319

PROPORTIONER MODELS 151, 153, & 167 (4.5 CPSM / 17.0 L.P.M.)				SPRAY CLEAN INJECTORS MODELS 241CT & 244CT (1 CPSM / 11.4 L.P.M.)			
TIP	RATIO	oz/gal	ml/L	TIP COLOR	RATIO	oz/gal	ml/L
Tan	512:1	0.25	1.6	Tan	366:1	0.35	2.2
Orange	384:1	0.33	2.1	Orange	256:1	0.50	3.1
Turquoise	256:1	0.50	3.1	Turquoise	183:1	0.70	4.3
Pink	205:1	0.63	3.9	Pink	128:1	1.00	6.2
Light Blue*	171:1	0.75	4.7	Light Blue*	102:1	1.25	7.8
Brown	128:1	1.00	6.2	Brown	92:1	1.40	8.7
Red	102:1	1.25	7.8	Red	73:1	1.75	10.9
White	85:1	1.50	9.5	White	58:1	2.20	13.6
Green	73:1	1.75	10.9	Green	51:1	2.50	15.5
Blue	64:1	2.00	12.4	Blue	41:1	3.10	19.2
Yellow	40:1	3.20	19.8	Yellow	27:1	4.70	29.1
Black	32:1	4.00	24.8	Black	22:1	5.90	36.8
Purple	20:1	6.40	39.7	Purple	15:1	8.50	52.7
Gray	12:1	10.00	62.2	Gray	13:1	9.75	60.5
None	10:1	12.00	74.4	None	12:1	11.10	68.8

\* Metering tip color was formerly clear. Form S1319H  
Chemical induction rates are based on water thin products (1 CPS). Induction rates may vary from product to product. Field tests are recommended.

Number	Part Description	Part Number
All Shown	Dema® Low Flow Proportioner with Action Gap	D3352896
1	Dema® Foot Valve Only	D014367
2	Dema® Metering Tip Kit Only	D014333
Not Shown	Dema® Capillary Metering Tip For Use with 10% Quat Sanitizers - <b>Special Order, See Page 70</b>	D014355

# Dema<sup>®</sup> High Flow Proportioner



- Sanitizer  
Desinfectante
- All Purpose  
Cleaner  
Limpiador de Multi-Usos
- Glass  
Cleaner  
Limpiador de Vidrio
- Degreaser  
Desengrasador
- Floor Cleaner  
Limpiador de Pisos
- Disinfectant  
Desinfectante

**DEMA ENGINEERING COMPANY**  
 100-15K METERING TIP KIT FOR 1/2" HOSE BARBS  
 10020 Big Bend Blvd., St. Louis, MO 63122  
 Phone: (314) 966-3533 Toll Free: (800) 325-3362 Fax: (314) 965-8319

PROPORTIONER MODELS 151, 153, & 167 (4.5 GPM / 17.0 LPM)				SPRAY CLEAN INJECTORS MODELS 241CT & 244CT (1 GPM / 3.8 LPM)			
TIP	RATIO	oz/gal	ml/L	TIP COLOR	RATIO	oz/gal	ml/L
Tan	512:1	0.25	1.6	Tan	366:1	0.35	2.2
Orange	384:1	0.33	2.1	Orange	256:1	0.50	3.1
Turquoise	256:1	0.50	3.1	Turquoise	183:1	0.70	4.3
Pink	205:1	0.63	3.9	Pink	128:1	1.00	6.2
Light Blue*	171:1	0.75	4.7	Light Blue*	102:1	1.25	7.8
Brown	128:1	1.00	6.2	Brown	92:1	1.40	8.7
Red	102:1	1.25	7.8	Red	73:1	1.75	10.9
White	85:1	1.50	9.3	White	58:1	2.20	13.6
Green	73:1	1.75	10.9	Green	51:1	2.50	15.5
Blue	64:1	2.00	12.4	Blue	41:1	3.10	19.2
Yellow	40:1	3.20	19.8	Yellow	27:1	4.70	29.1
Black	22:1	6.00	37.8	Black	22:1	5.90	36.8
Purple	20:1	6.40	39.7	Purple	15:1	8.50	52.7
Gray	12:1	10.00	62.2	Gray	13:1	9.75	60.5
None	10:1	12.00	74.4	None	12:1	11.10	68.8

\* Metering tip color was formerly clear. Form S1319H  
 Chemical induction rates are based on water thin products (1 CPS). Induction rates may vary from product to product. Field tests are recommended.

Number	Part Description	Part Number
All Shown	Dema <sup>®</sup> High Flow Proportioner with Action Gap	D3352909
1	Dema <sup>®</sup> Foot Valve Only	D014367
2	Dema <sup>®</sup> Metering Tip Kit Only	D014333
Not Shown	Dema <sup>®</sup> Capillary Metering Tip For Use with 10% Quat Sanitizers - <b>Special Order, See Page 70</b>	D014355



# AccuDose® 2B Select



Number	Part Description	Part Number
All Shown	Hydro AccuDose® 2B Select	D1224224
1	Hydro Metering Tip Set	D014293
Not Shown	Accudose Select Complete Label Set- <i>See Page 77</i>	D014351
Not Shown	Hydro Dual Metering Tip (for Quat Sanitizer Only) - <i>Special Order, See Page 70</i>	D014364
Not Shown	MixMATE™ Standpipe Tag A-L Set- <i>See Page 78</i>	D014307
Not Shown	MixMATE™ Standpipe Tag M-U Set- <i>See Page 78</i>	D5835251



# AccuDose® Select 4+1



Number	Part Description	Part Number
All Shown	Hydro AccuDose® Select 4+1 with E-Gap, 4 Low and 1 High Flow	D015026
1	Hydro Metering Tip Set	D014293
2	MixMATE™ Standpipe Tag A-L Set	D014307
3	Accudose Select Complete Label Set - <b>See Page 77</b>	D014351
Not Shown	Hydro Dual Metering Tip (for Quat Sanitizer Only) - <b>Special Order, See Page 70</b>	D014364
Not Shown	MixMATE™ Standpipe Tag A-L Set- <b>See Page 78</b>	D014307
Not Shown	MixMATE™ Standpipe Tag M-U Set- <b>See Page 78</b>	D5835251



# Hydro High Flow Dispenser



Lock/Abschließen  
Cerrar/Veroulleren

Unlock/Aufschließen  
Abrir/Deveroulleren

Number	Part Description	Part Number
ALL	Hydro High Flow with E-Gap	D014347
Not Shown	Hydro Dual Metering Tip (for Quat Sanitizer Only) - <i>Special Order, See Page 70</i>	D014364

# Hydro Low Flow Dispenser



Number	Part Description	Part Number
All Shown	Hydro Low Flow with E-Gap	D014348
Not Shown	Hydro Dual Metering Tip (for Quat Sanitizer Only) - <i>Special Order, See Page 70</i>	D014364



# Dema® PF651 ProFill 1 Single Dispenser



**DEMA ENGINEERING COMPANY**  
100-15K METERING TIP KIT FOR 1/2" HOSE BARBS  
10020 Big Bend Blvd., St. Louis, MO 63122  
Phone: (314) 966-3533 Toll Free: (800) 325-3362 Fax: (314) 965-8319

PROPORTIONER MODELS 151, 151, & 167 (4.5 GPM / 17.0 LPM)				SPRAY CLEAN INJECTORS MODELS 241CT & 244CT (3 GPM / 11.4 LPM)			
TIP	RATIO	oz/gal	ml/L	TIP COLOR	RATIO	oz/gal	ml/L
Tan	512:1	0.25	1.6	Tan	366:1	0.35	2.2
Orange	384:1	0.33	2.1	Orange	256:1	0.50	3.1
Turquoise	256:1	0.50	3.1	Turquoise	183:1	0.70	4.3
Pink	205:1	0.63	3.9	Pink	128:1	1.00	6.2
Light Blue*	171:1	0.75	4.7	Light Blue*	102:1	1.25	7.8
Brown	128:1	1.00	6.2	Brown	92:1	1.40	8.7
Red	102:1	1.25	7.8	Red	75:1	1.75	10.9
White	85:1	1.50	9.3	White	58:1	2.20	13.6
Green	73:1	1.75	10.9	Green	51:1	2.50	15.5
Blue	64:1	2.00	12.4	Blue	41:1	3.10	19.2
Yellow	40:1	3.20	19.8	Yellow	27:1	4.70	29.1
Black	32:1	4.00	24.8	Black	22:1	5.90	36.6
Purple	20:1	6.40	39.7	Purple	15:1	8.50	52.7
Gray	12:1	10.00	62.2	Gray	13:1	9.75	60.5
None	10:1	12.00	74.4	None	12:1	11.10	68.8

\* Metering tip color was formerly clear. Form S1319H  
Chemical induction rates are based on water thin products (1 CPS). Induction rates may vary from product to product. Field tests are recommended.

Number	Part Description	Part Number
All Shown	Dema® PF651 ProFill 1 Single Dispenser	D6155177



# Dema® PF652 ProFill 2 Dual Dispenser



**DEMA ENGINEERING COMPANY**  
 100-15K METERING TIP KIT FOR 3/4" HOSE BARBS  
 10020 Big Bend Blvd., St. Louis, MO 63122  
 Phone: (314) 966-3533 Toll Free: (800) 325-3362 Fax: (314) 965-8319

PROPORTIONER MODELS 151, 153, & 167 (4.5 GPM / 17.0 LPM)			SPRAY CLEAN INJECTORS MODELS 241CT & 244CT (3 GPM / 11.4 LPM)		
TIP	[KAT] (oz/gal)	[oz/gal]	TIP COLOR	[KAT] (oz/gal)	[oz/gal]
Tan	512.1	0.25 1.6	Tan	366.1	0.35 2.2
Orange	384.1	0.33 2.1	Orange	256.1	0.50 3.1
Turquoise	256.1	0.50 3.1	Turquoise	183.1	0.70 4.3
Pink	205.1	0.63 3.9	Pink	128.1	1.00 6.2
Light Blue*	171.1	0.75 4.7	Light Blue*	102.1	1.25 7.8
Brown	128.1	1.00 6.2	Brown	92.1	1.40 8.7
Red	102.1	1.25 7.8	Red	73.1	1.75 10.9
White	85.1	1.50 9.3	White	58.1	2.20 13.6
Green	73.1	1.75 10.9	Green	51.1	2.40 15.5
Blue	64.1	2.00 12.4	Blue	41.1	3.10 19.2
Yellow	40.1	3.20 19.8	Yellow	27.1	4.70 29.1
Black	32.1	4.00 24.8	Black	22.1	5.90 36.6
Purple	20.1	6.40 39.7	Purple	15.1	8.50 52.7
Gray	12.1	10.00 62.2	Gray	13.1	9.75 60.5
None	10.1	12.00 74.4	None	12.1	11.10 68.8

\* Metering tip color was formerly clear. Form S1319H  
 Chemical induction rates are based on water thin products (1 CPS). Induction rates may vary from product to product. Field tests are recommended.

**SANITIZER**  
 Sanifizante

**PRESOAK**  
 Remojo Previo

**FOAMING DETERGENT**  
 Detergente Espumante

**POT & PAN DETERGENT**  
 Desengrasante para ollas y sartenes

Number	Part Description	Part Number
All Shown	Dema® PF652 2 Product Dispenser with Action Gap (Backflow Preventer)	D6155185



# Dema® 606T Select-O-Spray Dispenser

1



**DEMA ENGINEERING COMPANY**  
 100-15K METERING TIP KIT FOR 1/2" HOSE BARBS  
 10020 Big Bend Blvd., St. Louis, MO 63122  
 Phone: (314) 966-8533 Toll Free: (800) 325-3362 Fax: (314) 965-8319

PROPORTIONER MODELS 151, 151, & 167 (4.5 GPM / 17.0 L.P.M.)				SPRAY CLEAN SUBJECTS MODELS 241CT & 244CT (3 GPM / 11.4 L.P.M.)			
TIP	RATIO	oz/gal	ml/L	TIP COLOR	RATIO	oz/gal	ml/L
Tan	51:1	0.95	1.6	Tan	366:1	0.53	2.5
Orange	384:1	0.33	2.1	Orange	256:1	0.50	3.1
Turquoise	256:1	0.50	3.1	Turquoise	183:1	0.70	4.3
Pink	205:1	0.63	3.9	Pink	128:1	1.00	6.2
Light Blue*	171:1	0.75	4.7	Light Blue*	102:1	1.25	7.8
Brown	128:1	1.00	6.2	Brown	92:1	1.40	8.7
Red	102:1	1.25	7.8	Red	73:1	1.75	10.9
White	85:1	1.50	9.3	White	58:1	2.20	13.6
Green	73:1	1.75	10.9	Green	51:1	2.50	15.3
Blue	64:1	2.00	12.4	Blue	41:1	3.10	19.2
Yellow	40:1	3.20	19.8	Yellow	27:1	4.70	29.1
Black	32:1	4.00	24.8	Black	22:1	5.90	36.6
Purple	20:1	6.40	39.7	Purple	15:1	8.50	52.7
Gray	12:1	10.00	62.2	Gray	11:1	9.75	60.3
None	10:1	12.00	74.4	None	12:1	11.10	68.8

\* Metering tip color was formerly clear. Form S1319H  
 Chemical induction rates are based on water thin products (1 CPS). Induction rates may vary from product to product. Field tests are recommended.



**SANITIZER**  
Sanitizante

**FOAMING DEGREASER**  
Desengrasante Espumante

**FOAMING DETERGENT**  
Detergente Espumante

2



3



Number	Part Description	Part Number
1	Dema® 606T Select-O-Spray Dispenser	D015220
2	Optional Spray Gun with Quick Disconnect	D015221
3	Optional Foam Wand with Quick Disconnect	D015222

# Seko OPL Mini L Dispenser



Number	Part Description	Part Number
1	Seko OPL Mini L	D1224446
2	SekoFlex EPDM Detergent Tubing	D1224858
3	Seko OPL Mini L Remote	D1224447



# Beta SingleShot Dispenser

1



2



3



Number	Part Description	Part Number
1	Beta SingleShot	D1203188
2	Squeeze Tube Housing	D1206740
3	EDPM Detergent Tubing	D058550



# Beta Dual SingleShot Dispenser

1



2



3


**Number**
**Part Description**
**Part Number**

1

Beta Dual SingleShot

D4360628

2

Squeeze Tube Housing

D1206740

3

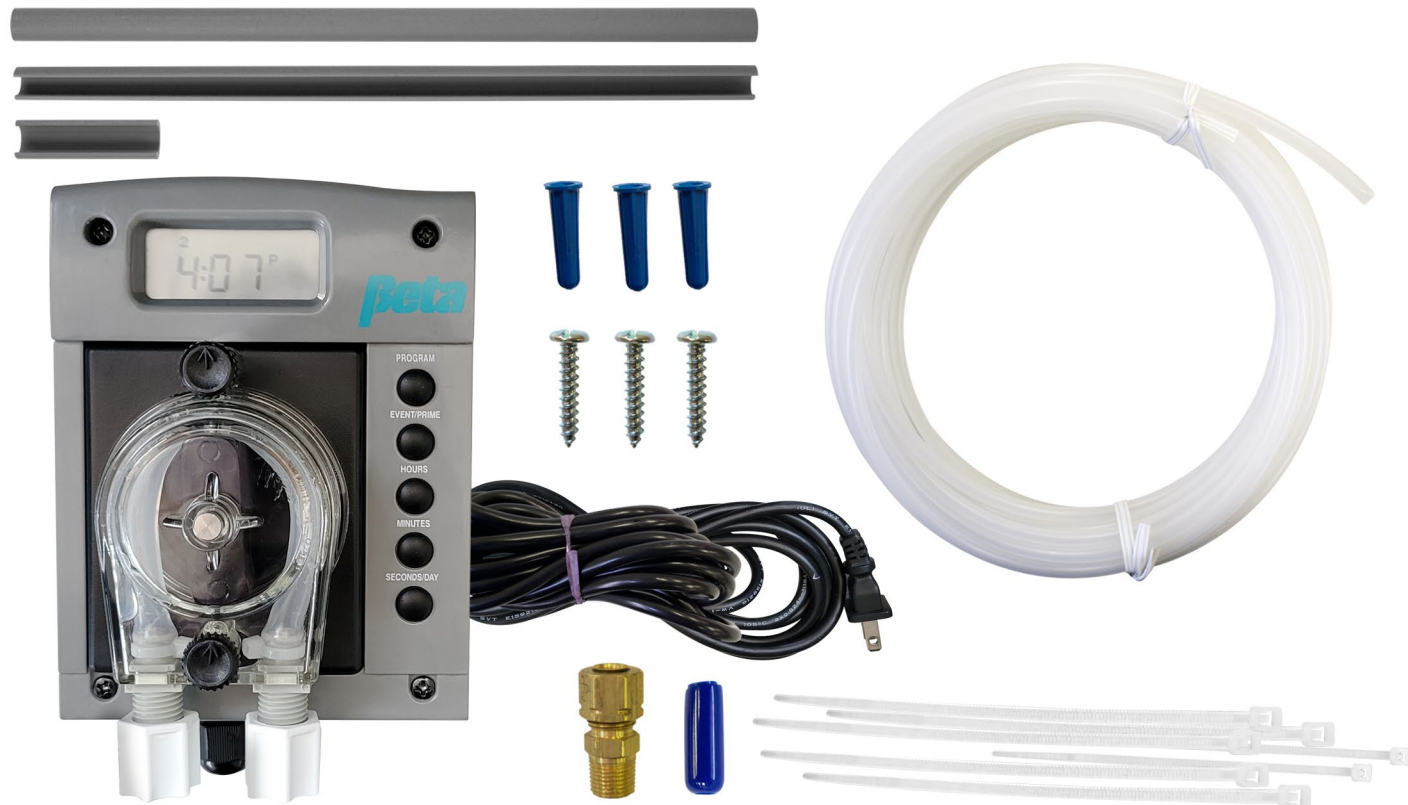
EDPM Detergent Tubing

D058550



# DR2000 115 V

1



2



3



Number	Part Description	Part Number
1	DR2000 115 VAC with Power Cord (115V Plug in)	D1202356
2	Squeeze Tube Housing	D1206740
3	Beta 5 oz. Squeeze Tube	D058209

# DR2000 D-Cell

1



2



3



Number	Part Description	Part Number
1	DR2000 D-Cell with Silicone Tube (batteries not included)	D1202354
2	Squeeze Tube Housing	D1206740
3	Beta 5 oz. Squeeze Tube	D058209



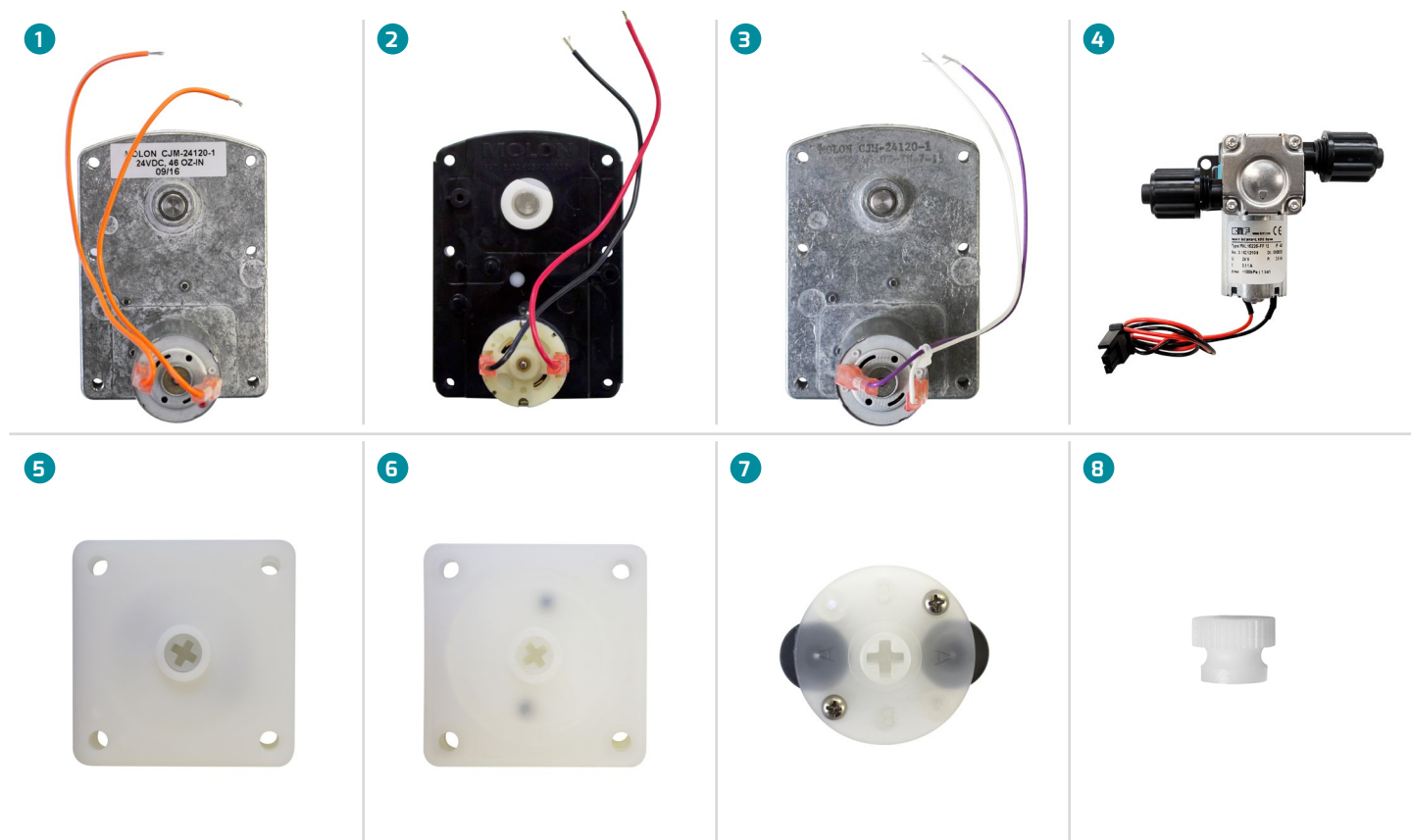
# Sink Mate Faucet Adapter Kit



Number	Part Description	Part Number
All	Sink Mate Faucet Adapter Kit 68.4 - T&S, Fischer and Chicago Fittings	D015435



# Motor and Pump Head Replacements



Number	Part Description	Part Number
1	24 V DC Motor for Freedom System (Detergent)	D015097
2	24 V DC 28 RPM Motor (Rinse)	D3033140
3	ChemMaster™ Motor (Laundry)	D015089
4	24V DC Freedom System HB motor	D1229128
5	Detergent Pump Head A Position (Includes "A" Spider)	D011531
6	Rinse Pump Head B Position (Includes "B" Spider)	D011530
7	Pump Head Spider A	D011587
8	Thumb Nut Nylon	D014224

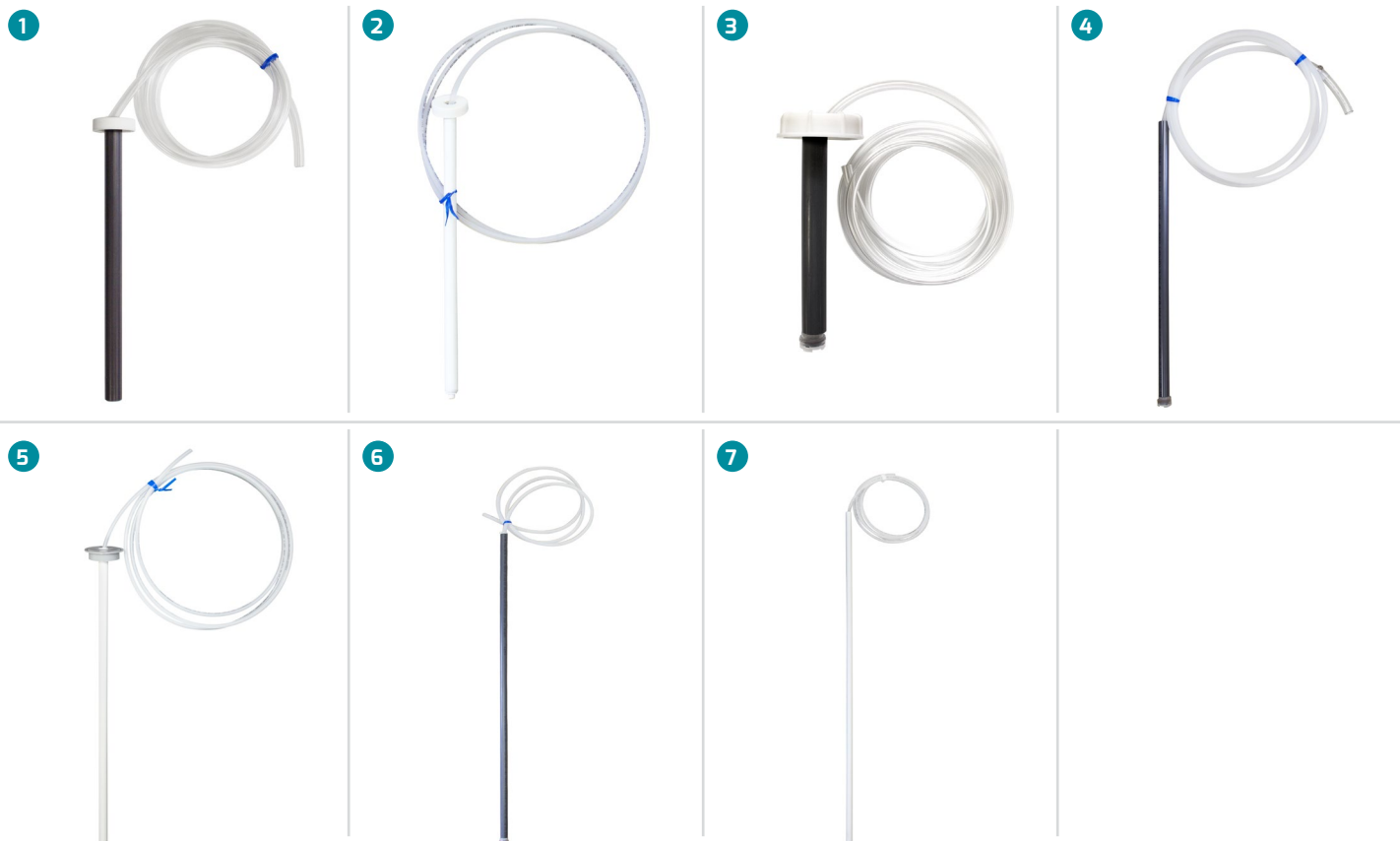


# Accessories



#	Part Description	Part #	#	Part Description	Part #
1	Delivery Cap with Straight Barb	D6081606	NS	8" Trigger Mist Sprayer for 24 oz. Bottle Only	D011516
2	Delivery Cap with Angled Barb	D5722491	7	8" Trigger Foaming Sprayer for 24 oz. Bottle Only	D011722
3	Delivery Cap Dual Straight Barb	D1231177	8	Dema® Foot Valve Only	D014367
4	2.5 Gallon MixMATE™ Cap	D014313	9	Dema® 1/4" Barb x 3/8" Barb Check Valve	D4207834
5	32 oz. Plain Spray Bottle with Sprayer	D3043170	10	Flo-Thru Device	D015313
NS	9" Trigger Mist Sprayer for 32 oz. Bottle Only	D011681	11	15 Gallon Drum Wrench	D011891
6	24 oz. Plain Spray Bottle with Sprayer	D011706	12	Hydro Foot Valve	D014299
NS	24 oz. Plain Spray Bottle Only	D011500			

# Standpipes



Number	Part Description	Part Number
1	1 Gallon Standpipe with Cap and PVC Tubing	D5502780
2	1 Gallon Standpipe with Polyflow Tubing	D014493
3	2.5 Gallon Standpipe with Check Valve	D014311
4	5 Gallon Standpipe with Check Valve and 3/8" PVC Tubing	D014494
5	5 Gallon Standpipe with 1/4" Polyflow Tubing	D014499
6	15 Gallon Standpipe with 3/8" Polyflow Tubing	D014491
7	15 Gallon Standpipe with 1/4" Polyflow Tubing	D014495



# Tubing and Hoses



#	Part Description	Part #	#	Part Description	Part #
1	1/8" ID x 3/8" OD Black Norprene Rinse Tubing, 9" Piece	D011540	7	1/4" ID x 7/16" OD Tan Tubing, 9" Piece	D011566
1	1/8" ID x 3/8" OD Black Norprene Rinse Tubing @ 50'	D011745	8	1/4" Copper Tubing Roll @ 10'	D011459
2	3/16" ID x 3/8" OD Silicone Tubing, 9" Piece	D011523	9	High Pressure Hose with Couplings @ 4'	D014309
3	T50-E Detergent/Sanitizer Tubing (Per Foot)	D011749	10	High Pressure Hose with Couplings @ 25'	D014251
4	CMA Rinse/Sanitizer Tubing, 8" Piece	D015276	11	Beta 5 oz. Squeeze Tube	D058209
5	CMA Detergent Pump Tubing, 8" Piece	D015277	12	Detergent Tubing Kit, EPDM	D058550
6	1/8" ID CMA Detergent/Rinse Blue Tubing, 8" Piece	D5774646			



# Tubing and Hoses



#	Part Description	Part #	#	Part Description	Part #
1	3/16" Impolene Tubing (Per Foot)	D011388	5	5/8" ID x 7/8" OD PVC Tubing (Per Foot)	D011460
2	1/4" Polyflow Tubing (Per Foot)	D011385	5	5/8" ID x 7/8" OD PVC Tubing Roll @ 5'	D011381
2	1/4" Polyflow Tubing Roll @ 100'	D011479	5	5/8" ID x 7/8" OD PVC Tubing Roll @ 100'	D011482
2	1/4" Polyflow Tubing Roll @ 1000'	D011483	6	3/16" ID x 3/8" Santoprene Tubing, 9" Piece	D011585
3	3/8" Polyflow Tubing (Per Foot)	D011386	6	3/16" ID x 3/8" Santoprene Tubing Roll @ 50'	D011747
3	3/8" Polyflow Tubing Roll @ 100'	D011461	7	ADS Pump Tubing, 9" Piece (For Squeeze Tubes)	D014836
4	1/4" ID x 3/8" OD PVC Tubing (Per Foot)	D011413	7	ADS Pump Tubing Roll @ 50'	D015202
4	1/4" ID x 3/8" OD PVC Tubing Roll @ 15'	D011464	8	3/16" ID x 3/8" OD Tygon 900 Tubing, 9" Piece	D015236
4	1/4" ID x 3/8" OD PVC Tubing Roll @ 100'	D011486	8	3/16" ID x 3/8" OD Tygon 900 Tubing Roll @ 50'	D015235
NS	1/2" ID x 3/4" OD PVC Tubing (Per Foot)	D011435			



# Metering Tips



Number	Part Description	Part Number
1	Hydro Metering Tip Set	D014293
2	Dema® Metering Tip Set	D014333
3	Hydro Metering Tip Set for 2L	D1231074
4	In Line Black Metering Tip	D5411845
5	Dema® Capillary Metering Tip	D014355
6	Hydro Dual Metering Tip	D014364

# Dispensers and Accessories

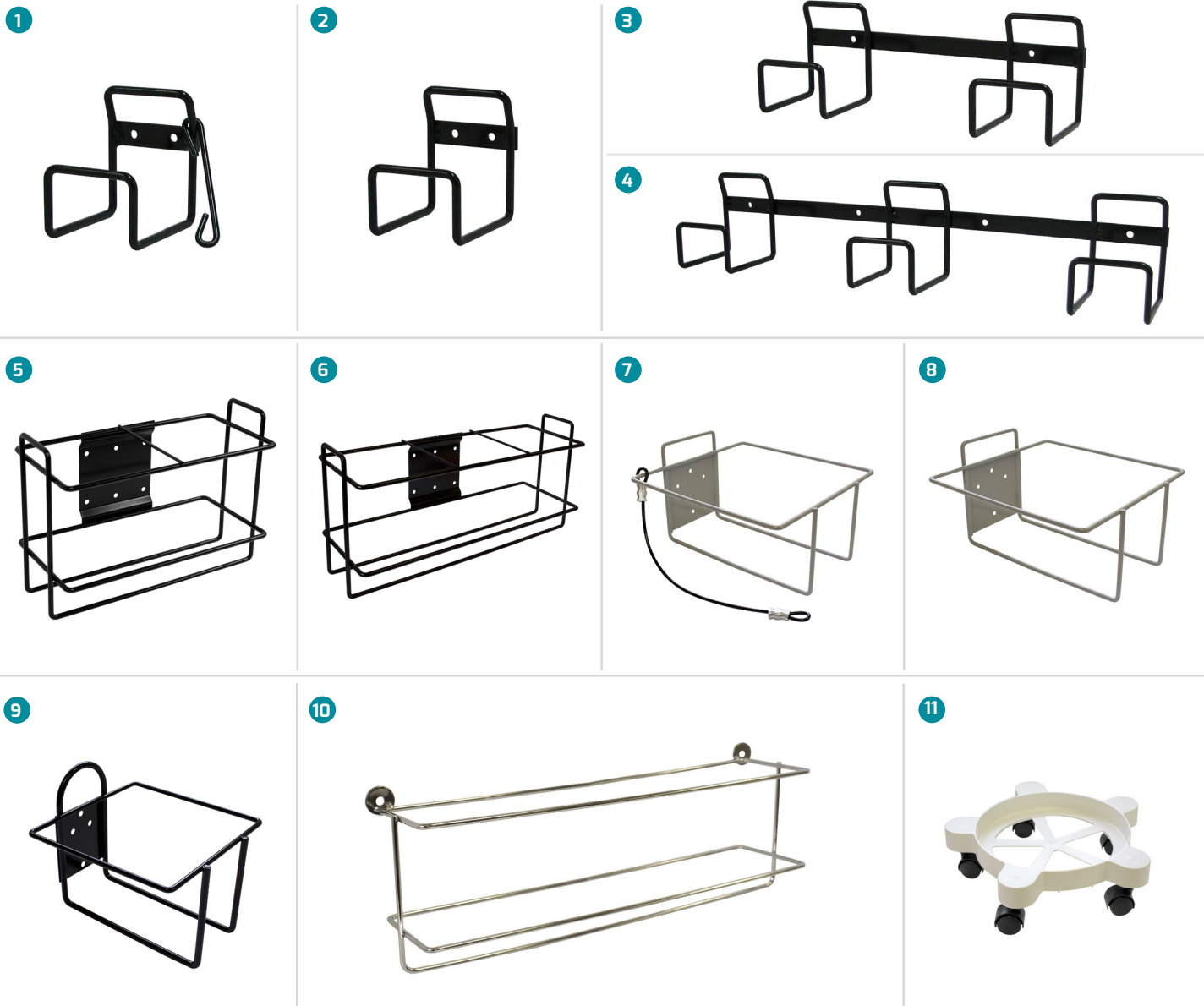


For use with 7 ounce aerosols.  
Aerosols sold separately.

#	Part Description	Part #	#	Part Description	Part #
1	Indulgence Hands-Free Foaming Soap Dispenser- Black	D1223834	7	PHS Liquid Hand Soap Dispenser- Black	D014375
2	Indulgence Hands-Free Foaming Soap Dispenser- White	D1223833	8	PHS Liquid Hand Soap Dispenser- White	D015114
3	Indulgence Foaming Soap Dispenser- Black	D4327772	9	Display Stand	D014400
4	Indulgence Foaming Soap Dispenser- Gray	D3467466	10	Hand Hygiene Station	D5699164
5	Bulk 30 oz. Foaming Liquid Soap Dispenser- White	D5901369	11	IND/COM® Metered Air Freshener Aerosol Single Dispenser (For use with 7 ounce aerosols)	D6001080
6	Bulk 40 oz. Liquid Hand Soap Dispenser- Black	D014346			



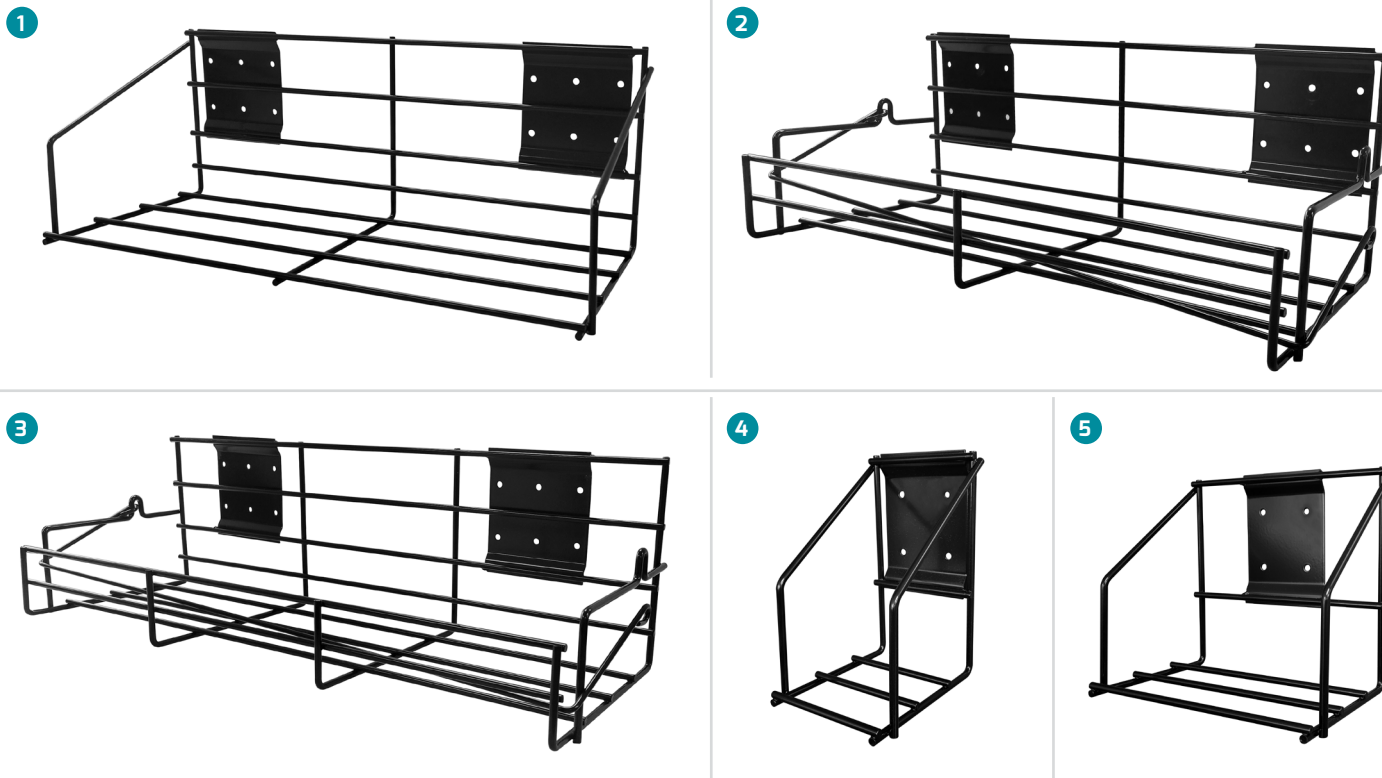
# Bottle Wall Brackets and Shelving



#	Part Description	Part #	#	Part Description	Part #
1	1.5 Gallon F-Style Bottle Bracket with Lock Bar	D5344195	7	2.5 Gallon Shelf Bracket with Lock	D015447
2	1.5 Gallon F-Style Bottle Bracket	D5344216	8	2.5 Gallon Shelf Bracket	D015369
3	1.5 Gallon F-Style 2 Bottle Bracket	D5344241	9	1 Gallon Square Jug Bracket	D011759
4	1.5 Gallon F-Style 3 Bottle Bracket	D5344259	10	Spray Bottle Wire Rack	D5712939
5	3100 mL 2 Bottle Rack	D5209356	11	Li'l Dolly 5 Gallon Bucket Dolly	D011922
6	3100 mL 3 Bottle Rack	D5209372			



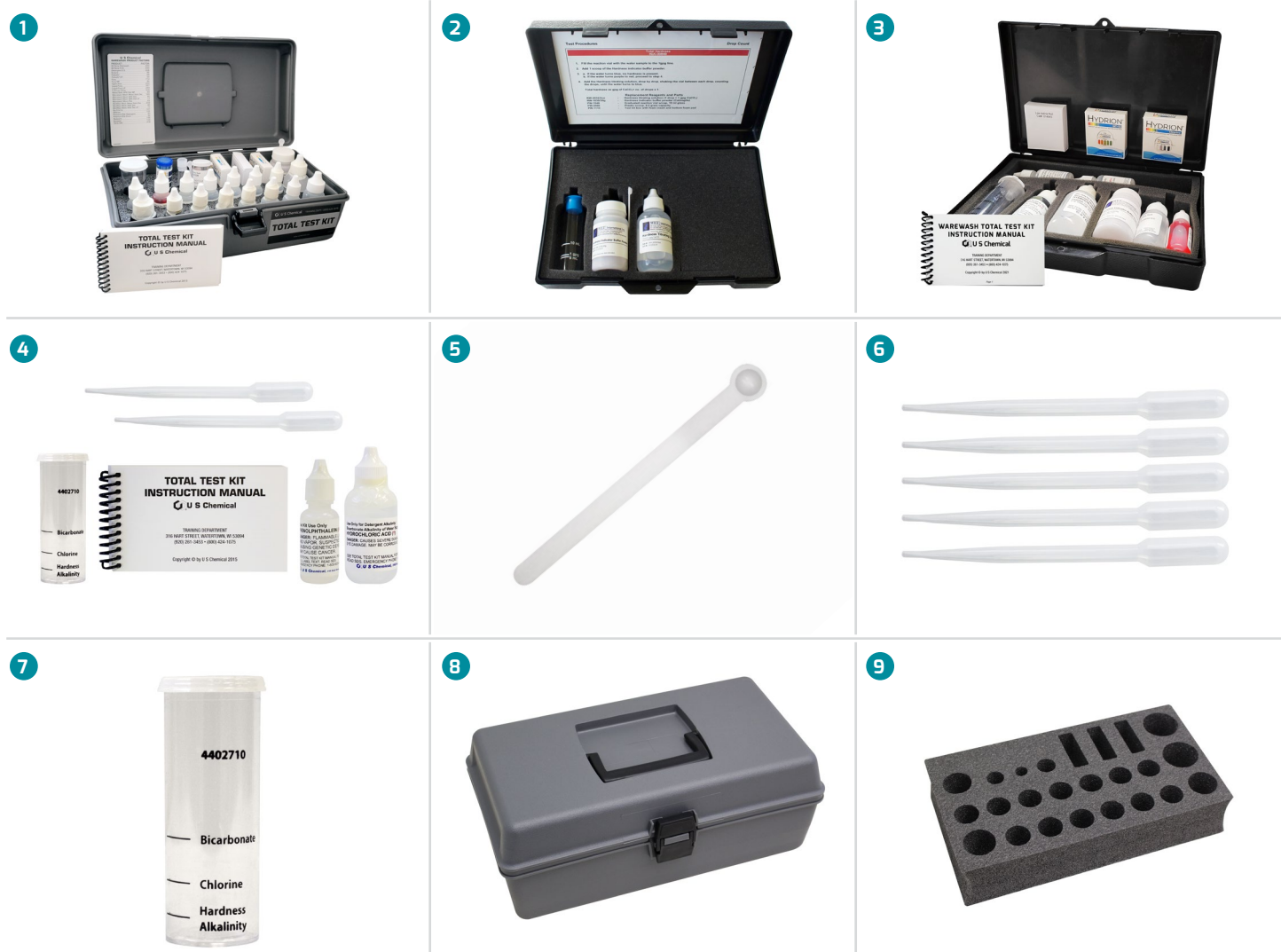
# Bottle Wall Brackets and Shelving



Number	Part Description	Part Number
1	1.5 Gallon F-Style Bracket 4 Bottle Rack	D1230878
2	1.5 Gallon F-Style Bracket 4 Bottle Locking Rack	D1230880
Not Shown	1.5 Gallon F-Style Bracket 5 Bottle Rack	D1230879
3	1.5 Gallon F-Style Bracket 5 Bottle Locking Rack	D1230881
4	2 Liter 1 Bottle Rack	D1230950
5	2 Liter 2 Bottle Rack	D1230949



# Test Kits and Replacements



#	Part Description	Part #
1	Total Test Kit Complete with Instruction Manual	D1229088
N5	Replacement Total Test Kit Manual	D4402980
2	Hard Water Test Complete	D014953
3	Warewash Test Kit with Instruction Manual	D1229125
N5	Replacement Warewash Test Kit Manual	D1229124
4	Alkaline Test Complete	D014963

#	Part Description	Part #
5	Mini Scoop for Water Hardness Test	D014872
6	Pipette, 5 Pack	D014911
7	Total Test Kit Vial with Cap	D4402710
8	Total Test Kit Replacement Box	D4402584
9	Total Test Kit Replacement Foam Insert	D4402592

# Total Test Kit Refills



#	Part Description	Part #	#	Part Description	Part #
1	(A1) pH Indicator, 1 Ounce	D4402517	12	(B4) Sodium Thiosulfate 10X, ½ Ounce	D014904
2	(A2) Iodine Solution, ½ Ounce	D014882	13	(B5) Sodium Thiosulfate 1X, ½ Ounce	D014903
3	(A3) Phenolphthalein, ½ Ounce	D014896	14	(B6) Methyl Orange, ½ Ounce	D014889
4	(A4) O-Tolidine Solution, ½ Ounce	D014900	15	(B7) Cationic Titrant Solution, ½ Ounce	D014913
5	(A5) Ninhydrin Solution, ½ Ounce	D014898	16	(Y) Hydrochloric Acid (HCL) Solution (10%), 2 Ounces	D014886
6	(A6) Hydrochloric Acid (HCL) Solution (5%), ½ Ounce	D014897	17	(W) Anionic Indicator Powder, .35 Ounce	D014912
7	(A7) Ammonium Thiocyanate Solution (10%), ½ Ounce	D014899	18	(X) Hardness Reagent Powder, 1 Ounce	D014869
8	(Z) Hardness Reagent Liquid, 1 Ounce	D014887	N5	pH Indicator, 16 Ounces	D4402525
9	(B1) Phosphoric Acid (75%), ½ Ounce	D014905	N5	Phenolphthalein, 16 Ounces	D4402533
10	(B2) Potassium Iodide (10%), ½ Ounce	D014902	N5	Hardness Reagent Liquid, 16 Ounces	D4402568
11	(B3) Starch Indicator Solution, ½ Ounce	D014901	N5	Hydrochloric Acid (HCL) Solution (10%), 16 Ounces	D4402541



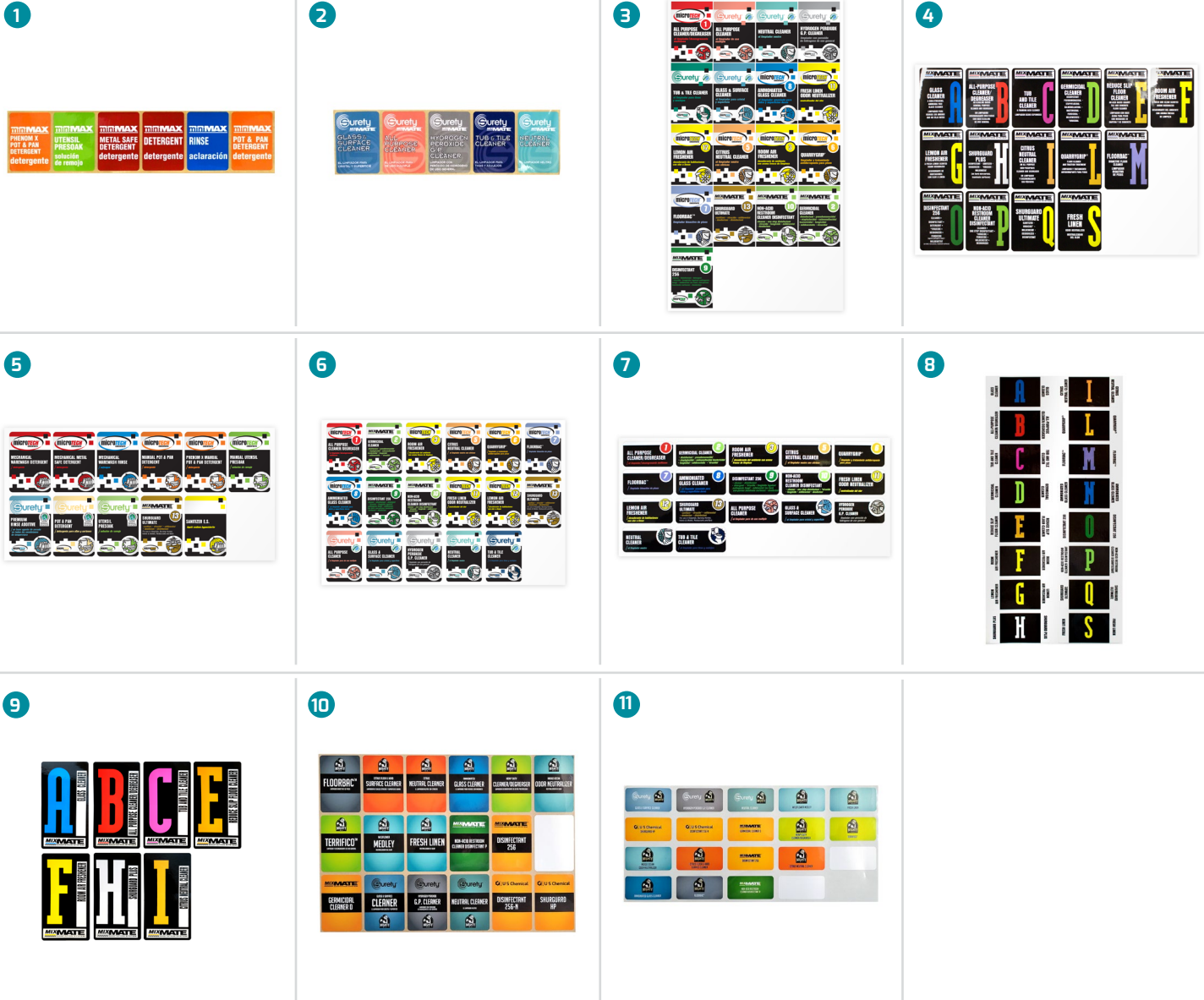
# Test Strips and Temperature Tape



#	Part Description	Part #	#	Part Description	Part #
1	Chlorine Test Paper with Dispenser, 2 Rolls @ 15'	D014935	9	Quat Check 0-1000ppm with Dispenser, 1 Roll @ 15'	D014947
2	Chlorine Test Paper in Envelope, 15 Strips @ 1"	D014936	10	QT-40 Quat Test Paper with Dispenser, 1 Roll @ 15'	D6009920
3	pH Test Papers, 3.0-5.5 in Envelope, 15 Strips @ 1"	D014939	11	Iodine Test Paper Kit with Case, 2 Rolls @ 15'	D014943
4	pH Test Paper, 1.0-12.0 with Dispenser, 1 Roll @ 15'	D014940	12	Test Paper Holder, Wall Mount	D015328
5	pH Test Papers 1.0-12.0 in Vial for Total Test Kit	D014937	13	AHP-100 Low Range Test Strips (0-750 PPM)	D950045
6	pH Test Paper, 0-6.0 with Dispenser, 1 Roll @ 15'	D6196593	14	AHP-500 High Range Test Strips (0-5000 PPM)	D950046
7	QT-10 Quat Test Paper with Dispenser, 1 Roll @ 15'	D014942	15	180° F Temperature Sensitive Tape, 24 per Package	D014909
8	QT-10 Quat Test Paper in Envelope, 15 Strips @ 1"	D014941	16	160° F Temperature Sensitive Tape, 24 per Package	D014910



# Stickers and Standpipe Line Tags



#	Part Description	Part #	#	Part Description	Part #
1	MiniMAX Warewash Docking Station Product Stickers	D4486079	7	MicroTECH™ Houskeeping AccuDose® Stickers	D5873759
2	Surety™ MixMATE™ Docking Station Product Stickers	D5344291	8	AccuDose® Select Complete Label Set	D014351
3	MicroTECH™ Command Center Sticker Set	D1222248	9	MixMate Label Set	D014322
4	MixMATE™ Product Stickers	D5284292	10	MightyMix™ Dispenser Label Set	D1230872
5	MicroTECH™ Warewash Equipment Stickers	D5565908	11	MightyMix™ Accudose® Label Set	D1230873
6	MicroTECH™ Housekeeping Equipment Stickers	D5500856			



# Stickers and Standpipe Line Tags

1



2



3



4



5



6



7



8



9



#	Part Description	Part #	#	Part Description	Part #
1	Warewash Detergent Standpipe Tag	D014141	6	Housekeeping Line Tags*	L006795 - L006803
2	Warewash Rinse Standpipe Tag	D014144	7	MixMATE™ Standpipe Tag Set (A-L)	D014307
3	Warewash Sanitizer Standpipe Tag	D014147	8	MixMATE™ Standpipe Tag Set (M-U)	D5835251
4	Warewash Standpipe Tag Set of 3	D011966	9	Three Compartment Sink Water Level Stickers	D014125
5	Laundry Color Coded Standpipe Tags	D011976			

\* Order through the Literature Department



