

Viridans FIS-VFD Tutorial 1 - Web

Task:

Investigate *Eremophila longifolia*.

- Find the plant in the FIS.
- Export a composite photograph, map and written description of the species, in PDF format.
- Plot the distribution of the species on a map of Victoria.
- Export the map, in PDF format, so that it can be incorporated into a report.

The products of this task should be:

- A PDF file, with a written description, distribution map and photograph of *Eremophila longifolia*.
- A map, in PDF format, of Victoria with the distribution of *Eremophila longifolia* superimposed.

[Find a Species](#)

[Search an Area](#)

[Access Site Data](#)

[General Information](#)

[FAQ](#)

[Logout](#)

Victorian
Flora Information
System

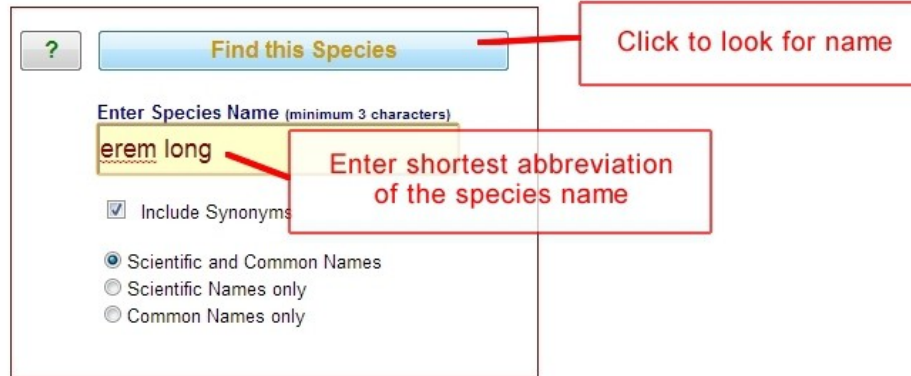


2013

Copyright © Viridans Biological Databases

Back

 *Victorian Flora Information System*



The screenshot shows a search interface for the Victorian Flora Information System. It includes a search button, a text input field with the text "erem long", and several radio and checkbox options. Red boxes with arrows point to the search button and the text input field, providing instructions.

Find this Species

Click to look for name

Enter Species Name (minimum 3 characters)

erem long

Enter shortest abbreviation of the species name

Include Synonyms

Scientific and Common Names

Scientific Names only

Common Names only

[Back](#)

Eremophila longifolia

Photo: © Paul Gullan/Viridans Images

General Appearance: A spreading shrub or small tree to 6 m tall, with drooping, narrow, grey-green leaves and deep orange, tubular flowers, borne singly in leaf axils.

Leaves: Linear, mostly alternate, to 18 x 1 cm, dull, grey-green, covered with fine, short hairs, hanging downwards on drooping branchlets.

Flowers: Deep orange and covered with short fine hairs, tubular, to 3 cm long, hanging downwards on short, slender stalks. Petals 5, joined for most of their length into an arched tube with five, uneven, curled lobes; the inside or the lobes are pale orange with darker spots. Sepals 5, green, triangular, pressed against base of flower tube. Stamens protruding from flower. (Jan Feb Mar Apr May Jun Jul Aug Sep Oct Nov Dec)

Fruit: Ovoid to oblong, dark brown, fleshy, to 12 x 12 mm.

Environment: Sandy soils in woodlands of low rainfall areas.

Butterfly Food Plant: Food for caterpillars of Rayed Blue.

Authority: (R. Br.) F. Muell.

Other States: NSW NT QLD SA WA

[Plot Distribution Map](#)[Show Larger Pictures](#)[Display Picture Text and Map](#)

F A V O Species Names

Eremophila longifolia : Berrigan

[Back](#)

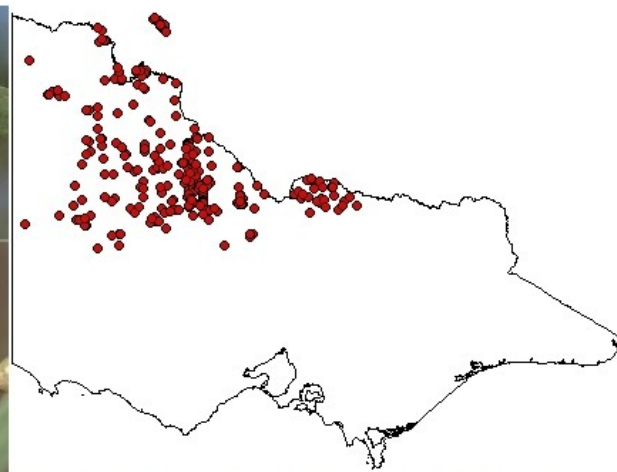
[Print-Save PDF](#)

Eremophila longifolia - Berrigan

[Click here to save this composite display as a PDF file](#)



Copyright © Paul Gullan/Viridans Images



General Appearance: A spreading shrub or small tree to 6 m tall, with drooping, narrow, grey-green leaves and deep orange, tubular flowers, borne singly in leaf axils.

Leaves: Linear, mostly alternate, to 18 x 1 cm, dull, grey-green, covered with fine, short hairs, hanging downwards on drooping branchlets.

Flowers: Deep orange and covered with short fine hairs, tubular, to 3 cm long, hanging downwards on short, slender stalks. Petals 5, joined for most of their length into an arched tube with five, uneven, curled lobes; the inside or the lobes are pale orange with darker spots. Sepals 5, green, triangular, pressed against base of flower tube. Stamens protruding from flower. (Jan Feb Mar Apr May Jun Jul Aug Sep Oct Nov Dec)

Fruit: Ovoid to oblong, dark brown, fleshy, to 12 x 12 mm.

Environment: Sandy soils in woodlands of low rainfall areas.

Butterfly Food Plant: Food for caterpillars of Rayed Blue.

Authority: (R. Br.) F. Muell.

Other States: NSW NT QLD SA WA

Annual Rainfall: 309 to 423 mm

Warmest Temperatures: 31 to 33 °C

Coollest Temperatures: 2 to 4 °C

Altitude: 63 to 121 m ASL


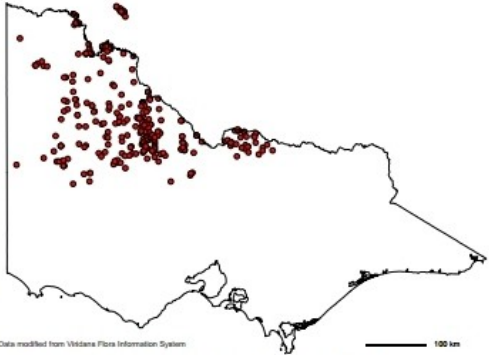
Other Scientific Names: *Stenochilus longifolius*, *Stenochilus salicinus*, *Stenochilus pubiflorus*, *Bontia longifolia*, *Eremophila salicina*

Other Common Names: Native Plum Tree, Berrigan Emu Bush, Native Plum, Long-leaved Eremophila, Dogwood, Emu Apple, Juniper Tree, Weeping Emu Bush, Berrigan (Koorie name), Emubush, Berrigan Emubush

localhost/viridans/fisdesk/ptmgrid01.pdf.php?specnum=1203&enc=zbxchrqovnqtieaeq&mdhms=1362026190 - Google Chro...

localhost/viridans/fisdesk/ptmgrid01.pdf.php?specnum=1203&enc=zbxchrqovnqtieaeq&mdhms=1362026190

Eremophila longifolia - Berrigan

Copyright © Paul Gullan/Viridans Images

Data modified from [Viridans Flora Information System](#)

100 km

General Appearance: A spreading shrub or small tree to 6 m tall, with drooping, narrow, grey-green leaves and deep orange, tubular flowers, borne singly in leaf axils.

Leaves: Linear, mostly alternate, to 18 x 1 cm, dull, grey-green, covered with fine, short hairs, hanging downwards on drooping branchlets.

Flowers: Deep orange and covered with short fine hairs, tubular, to 3 cm long, hanging downwards on short, slender stalks. Petals 5, joined for most of their length into an arched tube with five, uneven, curled lobes; the inside or the lobes are pale orange with darker spots. Sepals 5, green, triangular, pressed against base of flower tube. Stamens protruding from flower. (Jan Feb Mar Apr May Jun Jul Aug Sep Oct Nov Dec)

Fruit: Ovoid to oblong, dark brown, fleshy, to 12 x 12 mm.

Environment: Sandy soils in woodlands of low rainfall areas.

Butterfly Food Plant: Food for caterpillars of Rayed Blue.

Authority: (R. Br.) F. Muell.

Other States: NSW NT QLD SA WA

Annual Rainfall: 309 to 423 mm

Warmest Temperatures: 31 to 33 °C

Coollest Temperatures: 2 to 4 °C

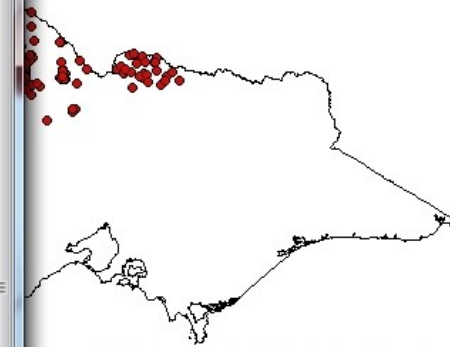
Altitude: 63 to 121 m ASL

Other Scientific Names: *Stenochilus longifolius*, *Stenochilus salicinus*, *Stenochilus pubiflorus*, *Bontia longifolia*, *Eremophila salicina*

Other Common Names: Native Plum Tree, Berregan Emu Bush, Native Plum, Long-leaved Eremophila, Dogwood, Emu Apple, Juniper Tree, Weeping Emu Bush, Berrigan (Koorie name), Emubush, Berrigan Emubush

[Copyright © Viridans Biological Databases](#)

You may save this PDF file to your local computer.



in leaves and deep orange, tubular flowers, borne
 hanging downwards on drooping branchlets.
 on short, slender stalks. Petals 5, joined for most of
 the length into an arched tube with darker spots. Sepals 5, green, triangular,
 pressed against base of flower tube. (Aug Sep Oct Nov Dec)

Other Scientific Names: *Stenochilus longifolius*, *Stenochilus salicinus*, *Stenochilus pubiflorus*, *Bontia longifolia*, *Eremophila salicina*
Other Common Names: Native Plum Tree, Berregan Emu Bush, Native Plum, Long-leaved Eremophila, Dogwood, Emu Apple, Juniper Tree, Weeping Emu Bush, Berrigan (Koorie name), Emubush, Berrigan Emubush

© Viridans Biological Databases

[Back](#)



Eremophila longifolia

Photo: © Paul Gullan/Viridans Images

General Appearance: A spreading shrub or small tree to 6 m tall, with drooping, narrow, grey-green leaves and deep orange, tubular flowers, borne singly in leaf axils.

Leaves: Linear, mostly alternate, to 18 x 1 cm, dull, grey-green, covered with fine, short hairs, hanging downwards on drooping branchlets.

Flowers: Deep orange and covered with short fine hairs, tubular, to 3 cm long, hanging downwards on short, slender stalks. Petals 5, joined for most of their length into an arched tube with five, uneven, curled lobes; the inside or the lobes are pale orange with darker spots. Sepals 5, green, triangular, pressed against base of flower tube. Stamens protruding from flower. (Jan Feb Mar Apr May Jun Jul Aug Sep Oct Nov Dec)

Fruit: Ovoid to oblong, dark brown, fleshy, to 12 x 12 mm.

Environment: Sandy soils in woodlands of low rainfall areas.

Butterfly Food Plant: Food for caterpillars of Rayed Blue.

Authority: (R. Br.) F. Muell

Other States: NSW NT QLD SA WA



[Plot Distribution Map](#)

[Show Larger Pictures](#)

[Display Picture Text and Map](#)

F A V O Species Names

Eremophila longifolia - Berrigan

Back

145°24'03" : 36°10'10" LonLat

55 356174 5996059 UTM

Zoom

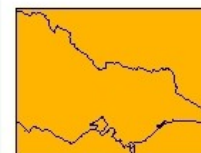
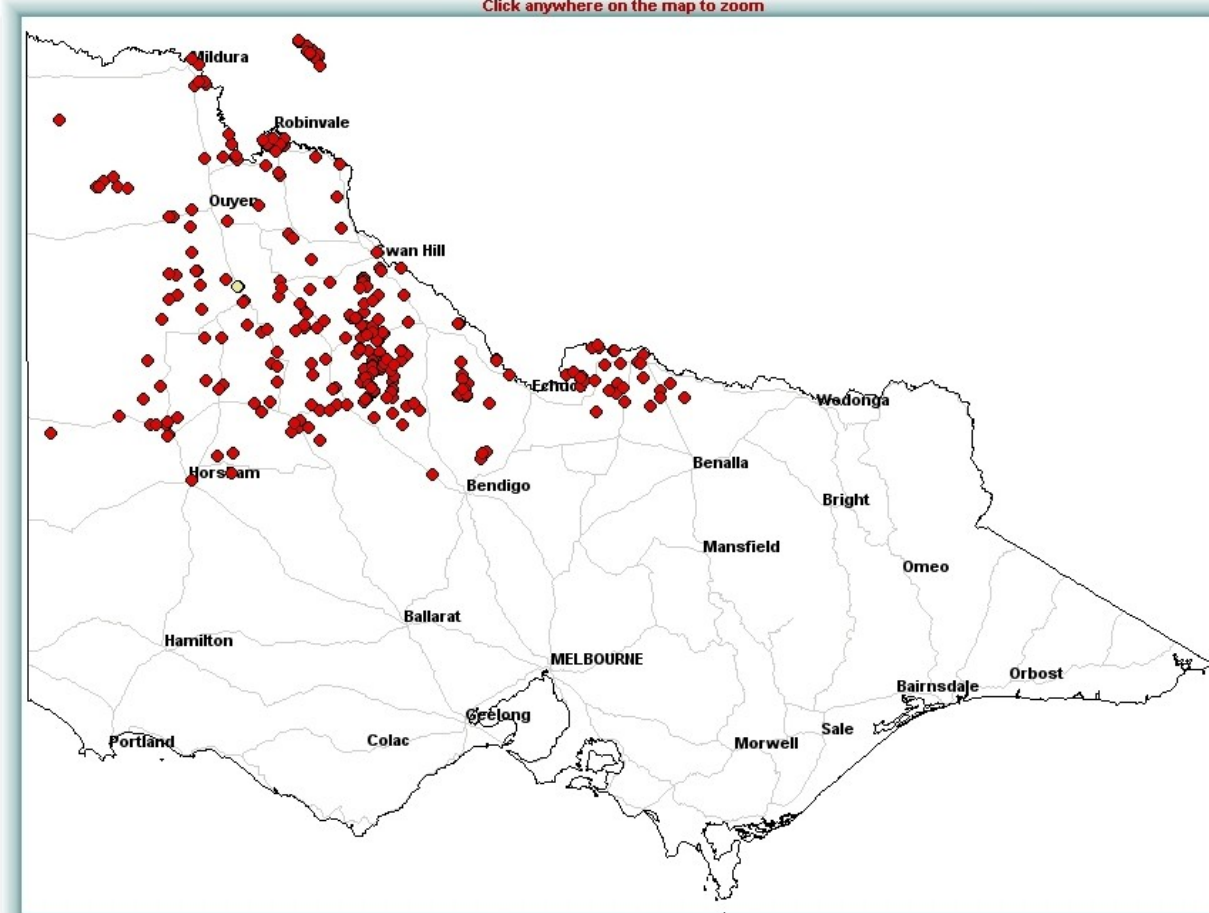
x40 x35 x30 x25 x20 x10 x5 full



Click here to generate a PDF file of this display

Eremophila longifolia - Berrigan

Click anywhere on the map to zoom



96 km

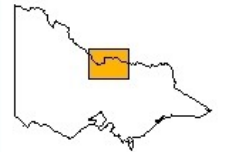
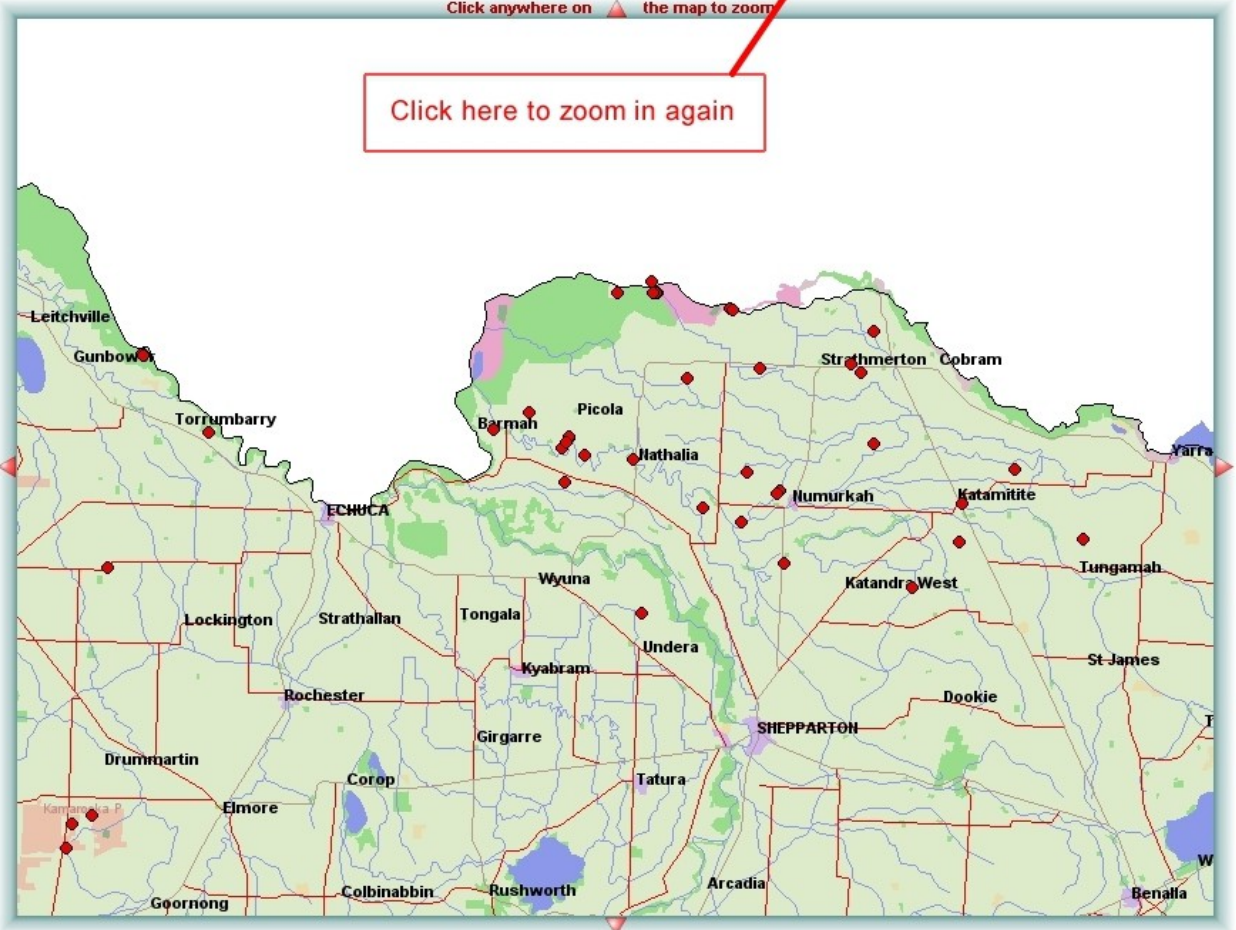
Map Options

- Identify sites on map
- Get all data from sites
- Map Zoom

Data modified from Viridans Flora Information System

***Eremophila longifolia* - Berrigan**
 Click anywhere on  the map to zoom

Click here to zoom in again



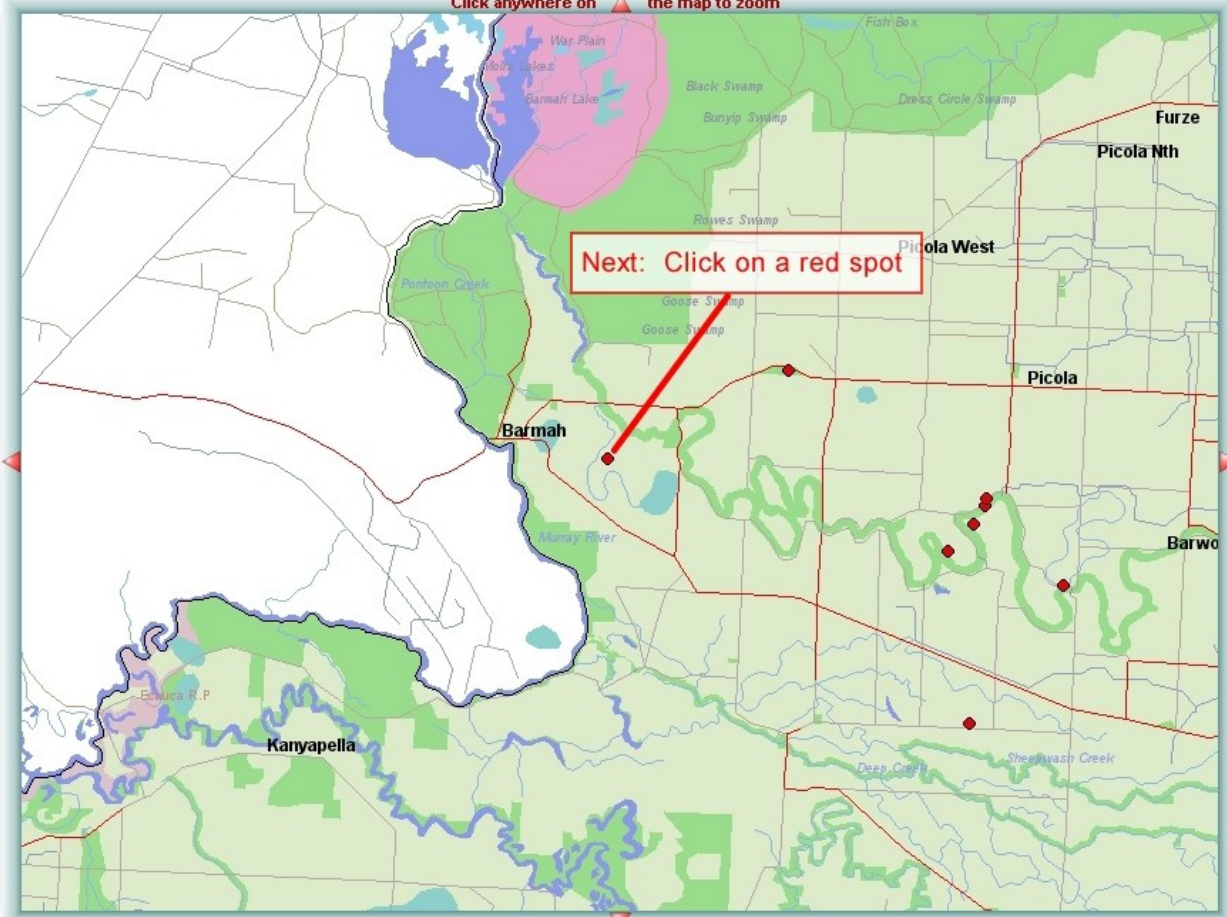
- 19 km
-  Main Roads
 -  Sealed Roads
 -  Unsealed Roads
 -  Tracks
 -  Built Up Areas
 -  Urban Parks
 -  Sea
 -  Rivers
 -  Lakes
 -  Reservoirs
 -  Swamps
 -  Private Land
 -  Public Land
 -  National Parks
 -  State Parks
 -  Regional Parks
 -  Wildlife Reserves
 -  Wilderness Areas
 -  Reference Areas

- Map Options*
-  Identify sites on map
 -  Get all data from sites
 -  Map Zoom

Data modified from Viridans Flora Information System

Eremophila longifolia - Berrigan

Click anywhere on the map to zoom



4 km

- Main Roads
- Sealed Roads
- Unsealed Roads
- Tracks
- Built Up Areas
- Urban Parks
- Sea
- Rivers
- Lakes
- Reservoirs
- Swamps
- Private Land
- Public Land
- National Parks
- State Parks
- Regional Parks
- Wildlife Reserves
- Wilderness Areas
- Reference Areas

- Map Options*
- Identify sites on map
 - Get all data from Sites

Click here to enable site ID

Back

145° 5'43" : 36°01'25" LonLat

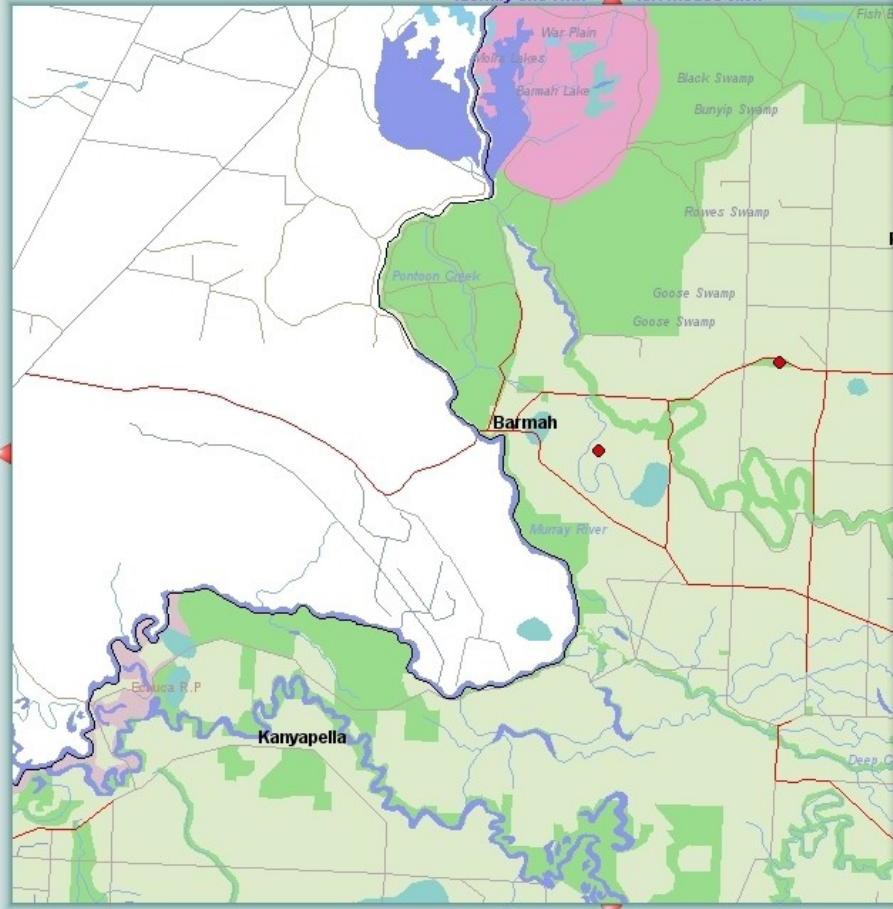
55 328373 6011741 UTM

Zoom

x40 x35 x30 x25 x20 x10

Eremophila longifolia - Berrigan

Identify site with left mouse click



Data modified from Viridans Flora Information System

FIS Web - Google Chrome

localhost/viridans/fisdesk/siteinfo.php?quadrat=U2500800&enc=zxchrqovnqtlieaeq



Back



Victorian Flora Information System

U2500800 Recs: 29 LonLat: 144°59'26" : 36°01'17" Date: 22/10/1996 Coll: SAB;HS

0678	+	f	<i>Allocasuarina luehmannii</i>	Buloke
0146	+		<i>Anthosachne scabra</i> s.l.	Common Wheat-grass
3274	+		<i>Austrostipa eremophila</i>	Desert Spear-grass
3275	+		<i>Austrostipa scabra</i> subsp. <i>falcata</i>	Rough Spear-grass
0642	+		<i>Carex inversa</i>	Knob Sedge
0860	+		<i>Crassula decumbens</i> var. <i>decumbens</i>	Spreading Crassula
0866	+		<i>Crassula sieberiana</i> s.l.	Sieber Crassula
1133	+		<i>Einadia nutans</i>	Nodding Saltbush
1160	+		<i>Enteropogon acicularis</i>	Spider Grass
1203	+		<i>Eremophila longifolia</i>	Berrigan
1298	+		<i>Eucalyptus microcarpa</i>	Grey Box
0728	+	#	<i>Euphorbia drummondii</i>	Flat Spurge
1837	+		<i>Juncus radula</i>	Hoary Rush
1896	+	*	<i>Lepidium africanum</i>	Common Peppergrass
2037	+	*	<i>Lolium rigidum</i>	Wimmera Rye-grass
8712	+		<i>Maireana</i> spp.	Bluebush
2140	+	*	<i>Medicago polymorpha</i>	Burr Medic
2386	+		<i>Oxalis perennans</i>	Grassland Wood-sorrel
0961	+		<i>Rytidosperma caespitosum</i>	Common Wallaby-grass
0963	+		<i>Rytidosperma duttonianum</i>	Brown-back Wallaby-grass
0964	+		<i>Rytidosperma erianthum</i>	Hill Wallaby-grass
4975	+	k	<i>Sclerolaena muricata</i> var. <i>semiglabra</i>	Dark Roly-poly
9062	+		<i>Sida</i> spp.	Sida
4050	+		<i>Teucrium racemosum</i> s.s.	Grey Germander
3424	+	*	<i>Trifolium arvense</i> var. <i>arvense</i>	Hare's-foot Clover
3537	+		<i>Vittadinia cuneata</i>	Fuzzy New Holland Daisy
3539	+		<i>Vittadinia gracilis</i>	Woolly New Holland Daisy
3544	+	*	<i>Vulpia bromoides</i>	Squirrel-tail Fescue

Back

Eremophila longifolia

Photo: © Paul Gullan/Viridans Images

General Appearance: A spreading shrub or small tree to 6 m tall, with drooping, narrow, grey-green leaves and deep orange, tubular flowers, borne singly in leaf axils.

Leaves: Linear, mostly alternate, to 18 x 1 cm, dull, grey-green, covered with fine, short hairs, hanging downwards on drooping branchlets.

Flowers: Deep orange and covered with short fine hairs, tubular, to 3 cm long, hanging downwards on short, slender stalks. Petals 5, joined for most of their length into an arched tube with five, uneven, curled lobes; the inside or the lobes are pale orange with darker spots. Sepals 5, green, triangular, pressed against base of flower tube. Stamens protruding from flower. (Jan Feb Mar Apr May Jun Jul Aug Sep Oct Nov Dec)

Fruit: Ovoid to oblong, dark brown, fleshy, to 12 x 12 mm.

Environment: Sandy soils in woodlands of low rainfall areas.

Butterfly Food Plant: Food for caterpillars of Rayed Blue.

Authority: (R. Br.) F. Muell.

Other States: NSW NT QLD SA WA



Plot Distribution Map

Show Larger Pictures

Display Picture Text and Map

F A V O Species Names

Eremophila longifolia : Berrigan

Back

Previous

Image 1 of 1

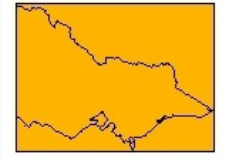
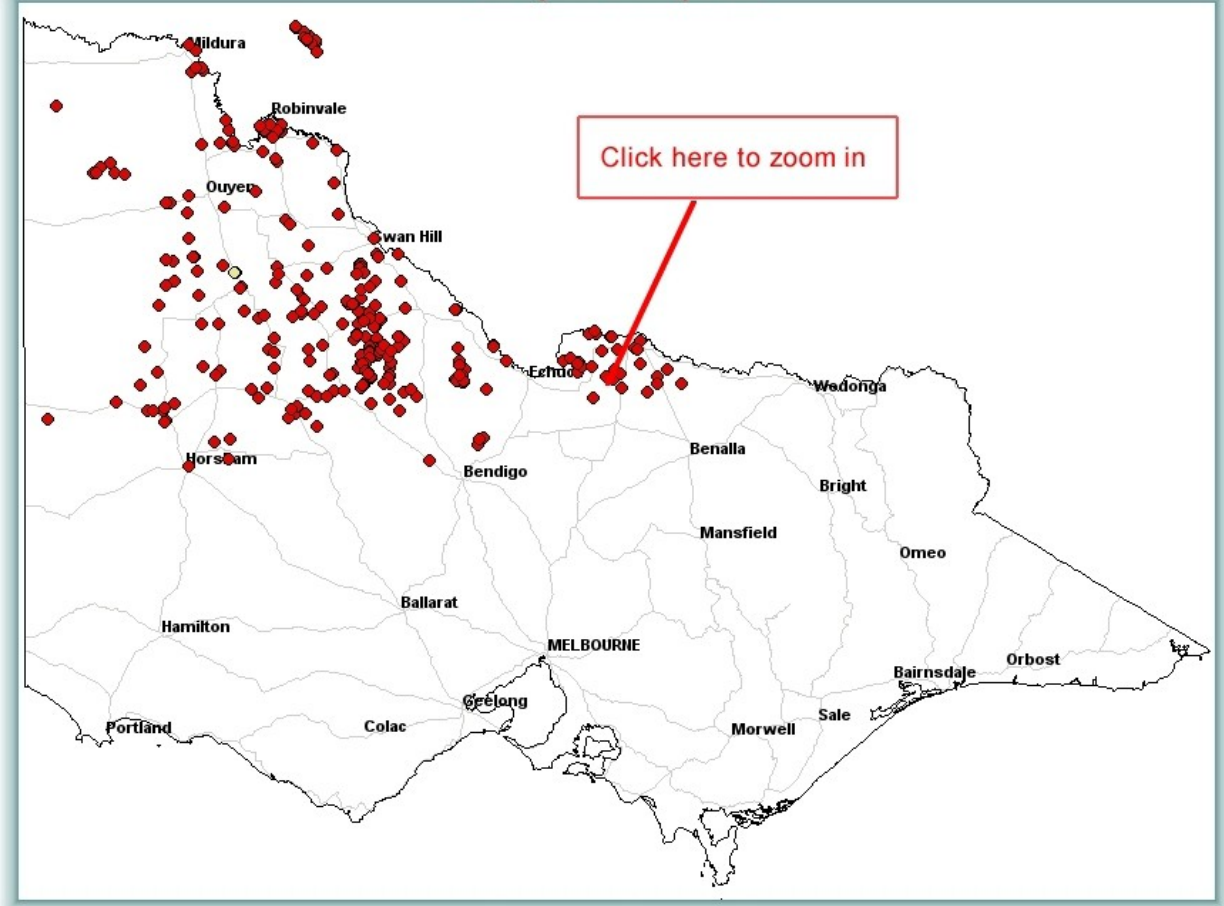
Next

Eremophila longifolia - Berrigan



© Paul Gullan/Viridans Images

Eremophila longifolia - Berrigan
Click anywhere on the map to zoom



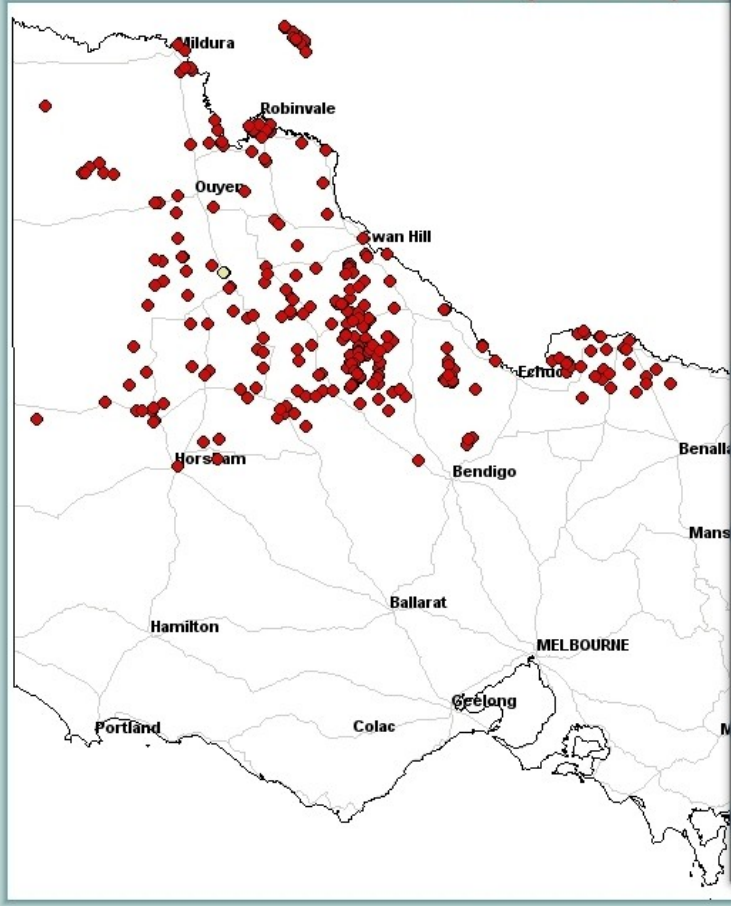
96 km

- Map Options*
- Identify sites on map
 - Get all data from sites
 - Map Zoom

Data modified from Viridans Flora Information System

javascript: mapdrawpdf();

Eremophila longifolia - Berrigan
Click anywhere on the map to zoom



localhost/viridans/fisdesk/mapdrawpdf.php?east=1&north=1&enc=zlchqrqovnqtieaeq&mdhms=1362043294&mpscale=1&...

localhost/viridans/fisdesk/mapdrawpdf.php?east=1&north=1&enc=zlchqrqovnqtieaeq&mdhms=1362043294&mpscale=1&plotsites=species

Eremophila longifolia - Berrigan

The PDF file is vector-based so it will print sharply at any resolution

You may zoom in and out of the image and can save it to your local computer