



Re-analysis of the 18S rRNA gene phylogeny of the ciliate class Colpodea

Peter Vďačný^{a,*}, Wilhelm Foissner^b

^aDepartment of Zoology, Faculty of Natural Sciences, Comenius University in Bratislava, Ilkovičova 6, Mlynská dolina B-1, 842 15 Bratislava, Slovak Republic

^bDepartment of Biosciences, Faculty of Natural Sciences, Paris Lodron University of Salzburg, Hellbrunnerstrasse 34, 5020 Salzburg, Austria

Received 30 September 2018; received in revised form 20 November 2018; accepted 28 November 2018
Available online 30 November 2018

Abstract

We critically re-analyzed the 18S rRNA gene phylogeny of the ciliate class Colpodea where four main lineages have been recognized: (1) Bursariomorphida including bryometopids, (2) Platyophryida including sorogenids, (3) Cyrtolophosidida, and (4) Colpodida including bryophryids and grossglockneriids. The Platyophryida branched off first and the Cyrtolophosidida and Colpodida were classified as sister groups. On basis of multiple statistical tests, we unraveled three problematic issues in colpodean phylogenies: the positions of the Bursariomorphida and Platyophryida are unstable and depend on alignment masking; a sister relationship of the Platyophryida and Cyrtolophosidida cannot be excluded by any statistical tree topology test; and clustering of bryophryids and grossglockneriids outside the Colpodida are also statistically valid possibilities. Natural classification of the highly diverse order Colpodida remains puzzling, possibly due to the lack of a phylogenetic signal and morphostasis of the oral ciliature in several *Colpoda*-like lineages. According to the “Ur-*Colpoda*” hypothesis, *Colpoda* represents the stem lineage from which both *Colpoda*-like and morphologically more derived taxa might have branched off. This evolutionary concept preserves not only information on morphology, ecology, and evolutionary processes of colpodid ciliates, but also aids practicability because the connection to the traditional literature is optimally maintained.

© 2018 Elsevier GmbH. All rights reserved.

Keywords: Ciliophora; Evolutionary taxonomy; Morphological evolution; Morphostasis; Oral ciliature; Paraphyly

Introduction

Ciliates of the class Colpodea [Small and Lynn, 1981](#) are widespread all over the globe in a broad range of terrestrial and semiterrestrial habitats, such as mosses, leaf litter, soil, bark of trees, astatic puddles, hay infusions and tree holes (for a review, see [Foissner 1993](#)). Few colpodeans live in limnetic environments, ranging from ponds and lakes to running waters ([Foissner et al. 1991, 1999](#)). Only very few species have been reported from marine environments ([Dunthorn et al. 2009](#)) although molecular surveys suggest that saltwater

taxa may not be so rare ([Dunthorn et al. 2014; Gimmler et al. 2016](#)). Terrestrial species have an r-selected survival strategy that is typically characterized by a small body size, high reproductive capacity and production of dormant cysts which are very resistant to desiccation and various other physical influences of the environment ([Foissner 1987](#)). Although the structure of the somatic cortex of colpodeans is conserved, their oral apparatus is highly diverse ([Foissner 1993; Lynn 2008](#)). This was not only the reason for misclassification of several species in the past but it is also a reflection of the broad food spectrum and ecological function of these ciliates in nature. Many colpodeans with a small buccal cavity are important grazers of bacteria ([Foissner 1993](#)), others with a huge buccal cavity are rapacious predators feeding on other

*Corresponding author.

E-mail address: peter.vdacny@uniba.sk (P. Vďačný).

ciliates and even rotifers (e.g., Foissner 1987, 1990; Lynn 1979), while those with a distinct cyrtos are diatom eaters (Buitkamp et al. 1989; Foissner 1993) and those with a special tube are fungi feeders (Aescht et al. 1991; Foissner 1980; Petz et al. 1985, 1986).

In the late 70's and early 80's of the past century, the structural conservatism of the somatic cortex helped to recognize this monophyletic group of ciliates as a distinct class (Lynn 1976, 1978, 1979; Small and Lynn 1981). However, only recently have colpodeans found their phylogenetic home within the CONThreeP super-cluster of the subphylum Intramacronucleata (Gentekaki et al. 2017; Lynn and Kolisko 2017; Lynn et al. 2018). Our view on the intraclass classification and evolution of colpodeans significantly changed in the light of 18S rRNA gene phylogenies. Foissner et al. (2011) made the first steps towards a natural phylogeny-based systematics and taxonomy of colpodeans and tried to reconcile morphological and molecular frameworks. The most important changes occurred at the order level. The order Bursariomorpha Fernández-Galiano, 1979 was found to include also the order Bryometopida Foissner, 1985. The name-bearing order Colpodida Puytorac et al., 1974 was recognized as the crown group of the whole class, containing also members of the orders Grossglockneriida Foissner, 1980 and Bryophryida Puytorac et al., 1979. The order Cyrtolophosidida Foissner, 1978 was recognized to be biphyletic and all its families, except for the nominotypical one, were transferred, together with the order Sorogenida Foissner, 1985, into the reactivated order Platyophryida Puytorac et al., 1979.

The steadily growing amount of new 18S rRNA gene sequences indicated that phylogenetic relationships within the Colpodida are very complex (Bourland et al. 2011, 2012, 2014; Dunthorn et al. 2012; Foissner et al. 2014; Quintela-Alonso et al. 2011), which led to resurrection of multiple synonymized genera and establishment of new ones: *Tillina* Gruber, 1879; *Repoma* Novotny, 1970; *Paracolpoda* Lynn, 1978; *Exocolpoda* Foissner et al., 2002; and *Emarginatophrya* Foissner, 2016. However, such an approach did not completely erase the paraphyly problem of the genus *Colpoda* Müller, 1773 and its nominotypical family Colpodidae Bory de St. Vincent, 1826. This has stimulated us to (1) critically re-analyze the 18S rRNA gene phylogeny of the class Colpodea; (2) examine the information contents of the colpodean 18S rRNA gene; (3) visualize the conflict between equally probable 18S rRNA gene phylogenies; and (4) reconstruct colpodean oral evolution accounting for phylogenetic uncertainties.

Material and Methods

Alignments, genetic distances and nucleotide homologies

All high quality 18S rRNA gene sequences of members of the class Colpodea were retrieved from GenBank (<https://www.ncbi.nlm.nih.gov/nucleotide/>) and aligned on

the Guidance2 server (<http://quidance.tau.ac.il/ver2/>), using the MAFFT algorithm and 100 bootstrap repeats (Sela et al. 2015). Taxa cover all main colpodean lineages and their higher classification follows Foissner et al. (2011). Our rationale for selection the outgroup was based on the recent phylogenomic analyses that recognized the Nassophorea as a sister class of the Colpodea (e.g., Gentekaki et al. 2017; Lynn and Kolisko 2017; Lynn et al. 2018). The reliability of the base multisequence alignment was estimated to be 0.98 by comparing bootstrap trees to the alignment algorithm. Six datasets were generated from the base multisequence alignment: unmasked dataset and five datasets masked with cutoff values of 0.50, 0.75, 0.80, 0.90 and 0.93.

Average pairwise evolutionary divergences were estimated from the unmasked alignment in MEGA ver. 7.0 (Kumar et al. 2016), using the maximum composite likelihood model (Tamura et al. 2004) and 1000 bootstrap replicates. The rate variation among sites was assigned a gamma distribution having a shape parameter of 0.4, and evolutionary distances were calculated under the heterogenous substitution pattern among lineages (Tamura and Kumar 2002). Prior to analysis, all ambiguous positions and alignment gaps were removed for each sequence pair. The resulting pairwise genetic distances were assessed by multi-dimensional scaling, as implemented in the scikit-learn ver. 0.19.1 package in Python (Pedregosa et al. 2011). The SMACOF algorithm was run with 250 initializations, each run had 20 000 iterations, and ϵ was set to $1e-8$ to declare convergence. Plotting of the ordination diagram was done with the Matplotlib module (Hunter 2007) and custom Python scripts.

The number of primary cluster-supporting nucleotide homologies was calculated for each dataset separately using the computer program SAMS (Wägele and Mayer 2007). Classification of types of nucleotide supporting positions follows Wägele and Rödding (1998). Briefly, symmetric, asymmetric and noisy positions were recognized. Symmetric (binary) positions have a different character state in each group of a split and hence support both groups equally. Asymmetric positions support only one group which possesses the same nucleotide at a particular position, while the other group contains different and more than one character state at this position. Noisy positions represent convergences or chance similarities between groups, as the same character state is present in all sequences of one group but also at least in one sequence of the other group.

Tree- and network-building methods

Prior to construction of phylogenetic trees, the best fitting evolutionary substitution models were found for each alignment under the Akaike Information Criterion in the jModel-Test ver. 0.1.1 (Guindon and Gascuel 2003; Posada 2008). The best evolutionary models were summarized in Supplementary Table S1. Maximum likelihood (ML) analyses were performed under the GTR + Γ + I model in PhyML ver. 3.0 with SPR swapping algorithm and 1000 non-parametric

bootstrap replicates on the South of France bioinformatics platform (<http://www.atgc-montpellier.fr/phyml/>) (Guindon et al. 2010). Bayesian analyses were conducted on the CIPRES portal ver. 3.1 (<http://www.phylo.org/>), using the program MrBayes (Ronquist et al. 2012) on XSEDE ver. 3.2.6 (Miller et al. 2010), with two independent runs each having four chains 5 000 000 generation long. Prior parameters of the GTR + Γ + I models were specified with the ‘lset’ and ‘prset’ commands. Every 100th tree was sampled and the first 25% of trees were discarded as burn-in. Maximum clade credibility trees were constructed and calculation of posterior probabilities of their nodes was based on the remaining 75% of trees.

Conflicts between equally probable trees sampled during the stationary phase of the Bayesian analysis were visualized with Dendroscope ver. 2.7.4 as softwired galled networks (Huson and Scornavacca 2012). They were constructed from a set of 1000 randomly selected post burn-in trees for each dataset separately. A threshold of 20% was set as a minimum fraction of trees that must contain a cluster for that cluster to be included in a galled network. Alternative evolutionary trajectories, i.e., edges leading into reticulate nodes, were marked by curved lines. Apart from the galled networks, also phylogenetic networks were built in SplitsTree ver. 4 (Huson 1998; Huson and Bryant 2006), using the neighbor-net algorithm with uncorrected distances (Bryant and Moulton 2004). The reliability of the phylogenetic networks was assessed by bootstrap analyses with 1000 replicates.

Statistical tree topology tests

The reliability of competing tree topologies was statistically tested, using the approximately unbiased test, the weighted Shimodaira–Hasegawa test and the weighted Kishino–Hasegawa test. Unconstrained and alternative trees were built under the best GTR + Γ + I evolutionary models, with a heuristic search, random sequence addition, and the SPR swapping algorithm in PAUP* ver. 4.0b8 (Swofford 2003). Consequently, per-site log likelihoods of the best scoring unconstrained and alternative trees were calculated and served for the estimation of *p*-values of the three topology tests. These were conducted using the programs makermt, consel and catpv from the package CONSEL (Shimodaira and Hasegawa 2001).

Reconstruction of ancestral oral traits

Evolution of the right and left side oral ciliature was performed in SIMMAP ver. 1.5.2 (Bollback 2006). Data were obtained mostly from Foissner (1993) and Dunthorn et al. (2012). Character coding was summarized in Supplementary Table S2. All character states were treated as unordered. Prior for the beta distribution of state frequencies and for the gamma distribution of the overall rate of character change were estimated on the 50%-majority rule consensus Bayesian trees inferred from the unmasked and 0.90 alignments, using the MCMC analysis implemented in SIMMAP.

The best fitting distributions were found from the posterior distributions of the MCMC analyses with the R script included in the SIMMAP package. Phylogenetic uncertainty was incorporated by a set of 1000 randomly selected post burn-in trees from the Bayesian MCMC analyses. Branch lengths were rescaled so that the overall length of each tree is one. Ten samples were analyzed per tree with 20 priors drawn from the prior distribution. Results were plotted as pie charts and mapped onto the 50%-majority rule consensus Bayesian trees, with the help of the R script ‘PlotSimMap.R’ (<https://github.com/nylander/PlotSimMap>).

Results

Phylogenetic relationships among main colpodean lineages

All phylogenetic techniques consistently recognized four main colpodean lineages with full or very strong statistical support in the six alignments analyzed: (1) Bursariomorpha including bryometopids, (2) Platyophryida including soro-genids, (3) Cyrtolophosidida and (4) Colpodida including bryophryids and grossglockneriids (Fig. 1, Supplementary Fig. S1). Phylogenetic relationships between these major clades were at first glance very well resolved and typically strongly supported statistically in Bayesian inferences while variably in maximum likelihood (ML) analyses (Fig. 1, Supplementary Fig. S1). The orders Colpodida and Cyrtolophosidida were classified as sister groups in all Bayesian and ML trees. This relationship was stable without any conflict also in the softwired galled networks constructed from thousands of phylogenetic trees sampled during the stationary phase of the Bayesian MCMC analyses (Fig. 2, Supplementary Fig. S2). Similarly, the Colpodida and Cyrtolophosidida formed a distinct split in NeighborNet analyses but its length and bootstrap support decreased from 95% to 69% along with the strength of the alignment masking (Table 1; Supplementary Fig. S3, arrowheads). The sister group relationship of the Colpodida and Cyrtolophosidida was consistently corroborated by four symmetric and five to seven asymmetric nucleotide positions (Table 1), which further underpinned the robustness recognized in phylogenetic trees.

The phylogenetic position of the Bursariomorpha and Platyophryida was usually statistically corroborated but conflicted between the alignments analyzed. The Bursariomorpha branched off first in the unmasked, 0.50 and 0.75 alignments, while the Platyophryida branched off first in the 0.80–0.93 alignments (Fig. 1, Supplementary Fig. S1). The same pattern was observed in the galled networks while a conflicting position of the Platyophryida was revealed only in the 0.75 alignment (Supplementary Fig. S2). The placement of the Bursariomorpha was consistent in the phylogenetic networks, since they were separated together with the outgroup from the rest of colpodeans by a distinct set of parallel edges whose length and statistical support decreased from 85% to 59% with the strength of the alignment masking

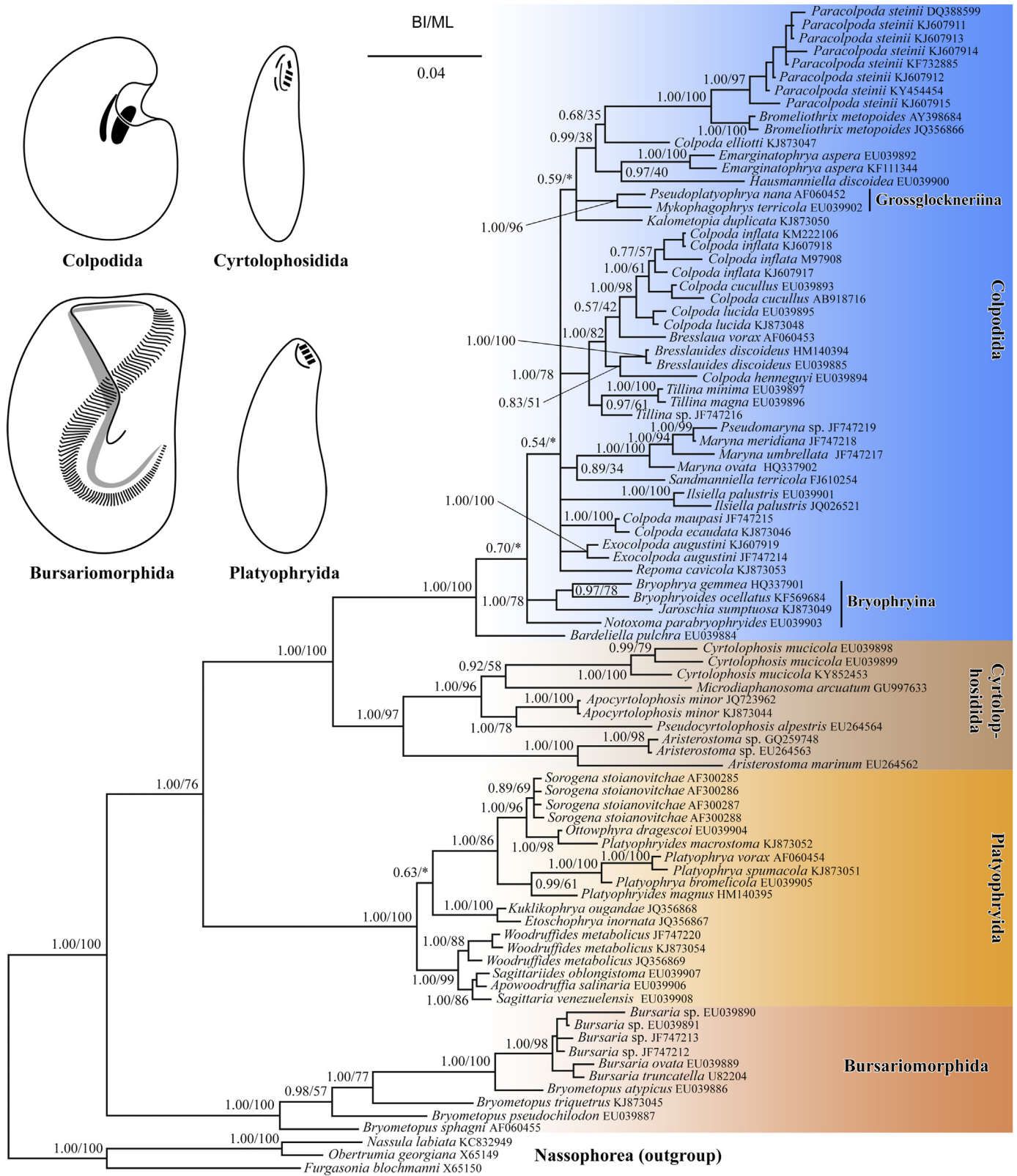


Fig. 1. 18S rRNA gene phylogeny of colpodean ciliates inferred from the unmasked alignment. There are four main lineages: Bursariomorpha, Platyophryida, Cyrtolophosidida and Colpodida including Bryophryina and Grossglockneriina. Bursariomorpha include Bryometopina and branch off first. Cyrtolophosidida and Colpodida are depicted as sister groups. Posterior probabilities for Bayesian Inference (BI) and bootstrap values for Maximum Likelihood (ML) are mapped onto the 50%-majority rule Bayesian consensus tree. Asterisks indicate mismatch in topology between Bayesian and ML tree. The scale bar denotes four substitutions per one hundred nucleotide positions.

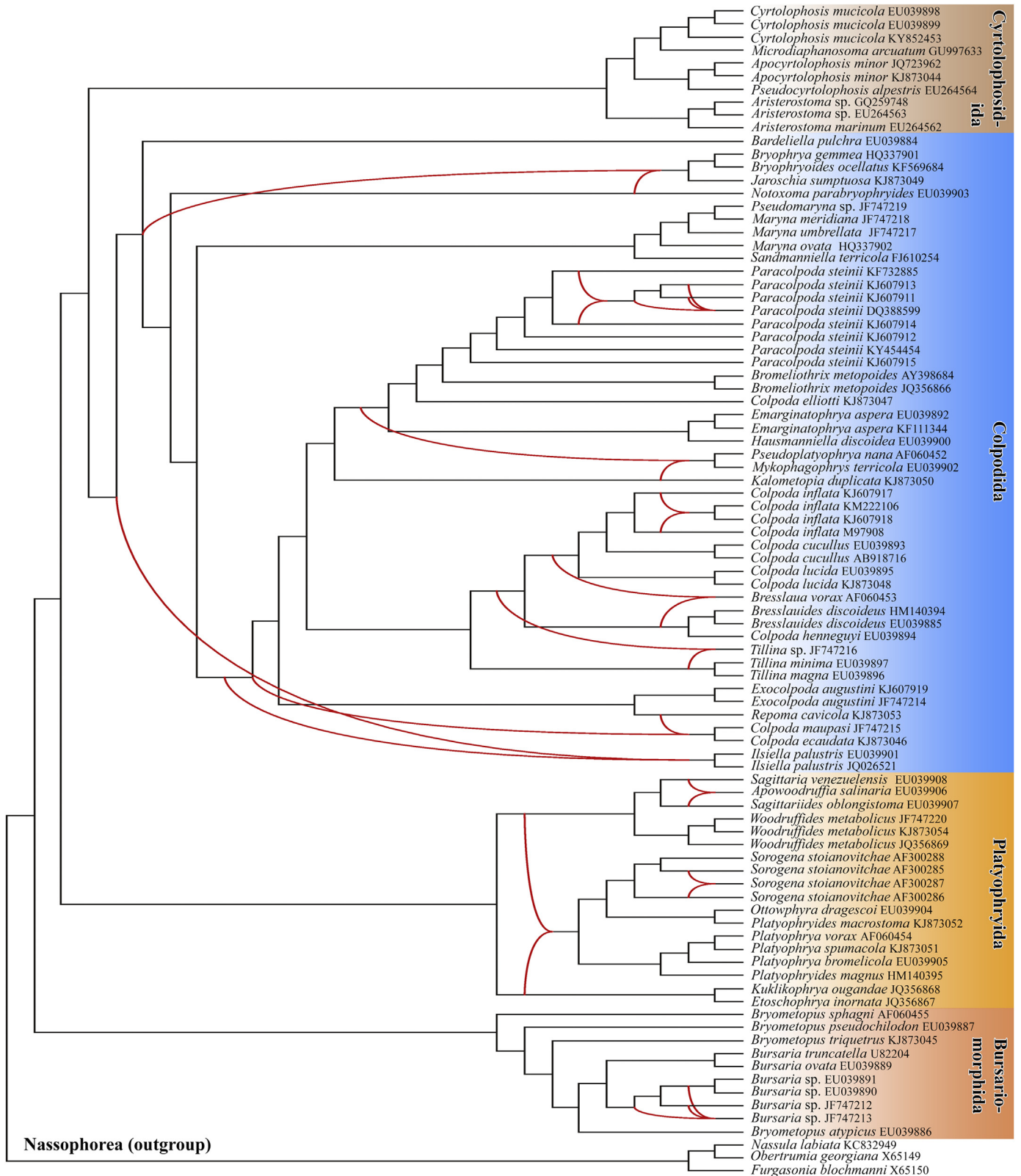


Fig. 2. Softwired galled network constructed from a set of thousand randomly selected trees obtained during the stationary phase of the Bayesian MCMC analyses of the unmasked alignment. A threshold of 20% was set as a minimum fraction of trees that must contain a cluster for that cluster to be included in the network. Alternative evolutionary trajectories, i.e., edges leading into reticular nodes, are marked by curved lines. Most conflicts concern the phylogenetic position of *Ilsiella*, bryophryids (*Bryophrya*, *Bryophryides*, *Jaroschia* and *Notoxoma*) and grossglockneriids (*Mykophagophrys* and *Pseudoplatyophrya*). *Ilsiella* and bryophryids are thus equally good candidates for being the deepest branches within the order Colpodida.

Table 1. Support for phylogenetic relationships among main colpodean lineages, as obtained with NeighborNet (NN), Bayesian Inference (BI), Maximum Likelihood (ML) and Split Spectrum (SS) analyses.

| Taxa bipartition ^a | Alignment ^b | NN ^c | BI ^d | ML ^e | SS ^f |
|---|------------------------|-----------------|-----------------|-----------------|-------------------|
| (Outgroup), (Colpodea) | Unmasked | 99 | 1.00/1.00 | 100/100 | 6, 18, 0/6, 1, 15 |
| | 0.50 | 99 | 1.00/1.00 | 100/100 | 6, 18, 0/6, 1, 15 |
| | 0.75 | 99 | 1.00/1.00 | 100/100 | 6, 13, 0/6, 0, 13 |
| | 0.80 | 99 | 1.00/1.00 | 100/100 | 6, 12, 0/6, 0, 12 |
| | 0.90 | 99 | 1.00/1.00 | 100/100 | 6, 11, 0/6, 0, 12 |
| | 0.93 | 98 | 1.00/1.00 | 100/100 | 6, 11, 0/6, 0, 11 |
| (Outgroup, Bursariomorphida), (Platyophryida, Cyrtolophosidida, Colpodida) | Unmasked | 85 | 1.00/1.00 | 100/76 | 4, 6, 38/4, 2, 35 |
| | 0.50 | 78 | 1.00/1.00 | 100/72 | 4, 5, 19/4, 2, 35 |
| | 0.75 | 76 | 1.00/1.00 | 100/56 | 3, 3, 19/3, 2, 32 |
| | 0.80 | 69 | – | 100/51 | 3, 3, 12/3, 2, 30 |
| | 0.90 | 53 | – | – | 3, 1, 11/3, 2, 24 |
| | 0.93 | 59 | – | – | 3, 1, 9/3, 2, 22 |
| (Outgroup, Platyophryida), (Bursariomorphida, Cyrtolophosidida, Colpodida) | Unmasked | – | – | – | – |
| | 0.50 | – | – | – | – |
| | 0.75 | – | – | – | – |
| | 0.80 | – | 1.00/0.77 | – | – |
| | 0.90 | – | 1.00/1.00 | 100/65 | – |
| | 0.93 | 76 | 1.00/1.00 | 100/66 | – |
| (Outgroup, Bursariomorphida, Platyophryida), (Cyrtolophosidida, Colpodida) | Unmasked | 95 | 1.00/1.00 | 76/100 | 4, 2, 10/4, 7, 21 |
| | 0.50 | 97 | 1.00/1.00 | 72/99 | 4, 2, 10/4, 7, 20 |
| | 0.75 | 89 | 0.77/1.00 | 56/95 | 4, 1, 7/4, 7, 15 |
| | 0.80 | 87 | 0.77/1.00 | 51/94 | 4, 1, 7/4, 5, 15 |
| | 0.90 | – | 1.00/1.00 | 65/87 | 4, 0, 3/4, 5, 7 |
| | 0.93 | 69 | 1.00/1.00 | 66/86 | 4, 0, 3/4, 4, 4 |
| (Outgroup, Bursariomorphida, Platyophryida, Cyrtolophosidida), (Colpodida) | Unmasked | 98 | 1.00/1.00 | 100/100 | 0, 6, 19/0, 5, 21 |
| | 0.50 | 99 | 1.00/1.00 | 99/100 | 0, 6, 18/0, 5, 20 |
| | 0.75 | 98 | 1.00/1.00 | 95/96 | 0, 5, 13/0, 4, 18 |
| | 0.80 | 98 | 1.00/1.00 | 94/95 | 0, 5, 12/0, 4, 17 |
| | 0.90 | 98 | 1.00/1.00 | 87/93 | 0, 5, 6/0, 2, 6 |
| | 0.93 | 98 | 1.00/1.00 | 87/88 | 0, 4, 6/0, 2, 5 |

^aTaxa bipartitions were represented in the Newick tree format.

^bSix alignments were analyzed, unmasked and masked by Guidance2 with five different cut off values ranging from 0.50 to 0.93.

^cBootstrap support was calculated in SplitsTree with 1000 bootstrap replicates.

^dPosterior probabilities were calculated in MrBayes. First values refer to the first group of a split while second values refer to the second group of a split.

^eBootstrap support was calculated in PhyML with 1000 bootstrap replicates. First values refer to the first group of a split while second values refer to the second group of a split.

^fNumbers of split supporting nucleotide homologies were calculated in SAMS. Values refer to symmetric, asymmetric and noisy nucleotide positions supporting the first/second group of a split.

Table 2. Log likelihoods and *p*-values of the AU (approximately unbiased), WSH (weighted Shimodaira–Hasegawa), and WKH (weighted Kishino–Hasegawa) tests to compare different topological scenarios. Significant differences (*p*-value <0.05) between the best unconstrained and constrained topologies in bold face.

| Topology | Alignment | Log likelihood (–ln L) | Δ (–ln L) ^a | AU | WSH | WKH | Conclusion |
|--|-----------|------------------------|-------------------------------|--------------|--------------|--------------|-----------------|
| Best scoring maximum likelihood tree (unconstrained) | Unmasked | 14,763.1686 | – | 0.831 | 0.993 | 0.635 | – |
| | 0.75 | 12,906.5545 | – | 0.679 | 0.995 | 0.550 | – |
| | 0.90 | 11,537.8243 | – | 0.598 | 0.967 | 0.502 | – |
| Monophyly of <i>Bryometopus</i> | Unmasked | 14,830.8533 | 67.68 | 0.007 | 0.022 | 0.005 | Rejected |
| | 0.75 | 12,968.0879 | 61.53 | 1e–05 | 3e–04 | 1e–04 | Rejected |
| | 0.90 | 11,598.6103 | 60.79 | 0.000 | 1e–04 | 1e–04 | Rejected |
| Monophyly of the Bryometopida sensu Foissner (1993) (<i>Bryometopus</i> + <i>Jaroschia</i> + <i>Microdiaphanosoma</i>) | Unmasked | 15,227.0795 | 463.91 | 0.001 | 0.000 | 0.000 | Rejected |
| | 0.75 | 13,289.0485 | 382.49 | 0.000 | 0.000 | 0.000 | Rejected |
| | 0.90 | 11,858.7891 | 320.96 | 8e–07 | 0.000 | 0.000 | Rejected |
| Monophyly of Cyrtolophosidida and Platyophryida | Unmasked | 14,781.8921 | 18.72 | 0.210 | 0.519 | 0.135 | Not rejected |
| | 0.75 | 12,917.8326 | 11.28 | 0.234 | 0.624 | 0.197 | Not rejected |
| | 0.90 | 11,550.2597 | 12.43 | 0.247 | 0.681 | 0.248 | Not rejected |
| Monophyly of Colpodida sensu Foissner (1993) | Unmasked | 14,792.8461 | 29.68 | 0.115 | 0.322 | 0.079 | Not rejected |
| | 0.75 | 12,930.4407 | 23.89 | 0.034 | 0.186 | 0.039 | Rejected |
| | 0.90 | 11,549.2711 | 11.45 | 0.232 | 0.760 | 0.232 | Not rejected |
| Monophyly of Colpodida incl. Grossglockneriina (i.e., Bryophryina clustering outside Colpodida) | Unmasked | 14,767.9056 | 4.74 | 0.268 | 0.162 | 0.625 | Not rejected |
| | 0.75 | 12,908.1197 | 1.56 | 0.537 | 0.949 | 0.450 | Not rejected |
| | 0.90 | 11,538.0757 | 0.25 | 0.582 | 0.947 | 0.498 | Not rejected |
| Monophyly of <i>Colpoda</i> sensu Foissner (1993) | Unmasked | 14,969.1681 | 206.00 | 0.001 | 0.000 | 0.000 | Rejected |
| | 0.75 | 13,082.1002 | 175.55 | 0.000 | 0.000 | 0.000 | Rejected |
| | 0.90 | 11,684.3465 | 146.52 | 0.003 | 0.000 | 0.000 | Rejected |
| Monophyly of <i>Colpoda</i> incl. <i>Bromeliothrix</i> | Unmasked | 14,853.5777 | 90.41 | 4e–05 | 0.005 | 0.001 | Rejected |
| | 0.75 | 12,982.0423 | 75.49 | 2e–04 | 0.001 | 2e–04 | Rejected |
| | 0.90 | 11,610.4014 | 72.58 | 0.002 | 0.010 | 0.002 | Rejected |
| Monophyly of Hausmanniellidae (<i>Hausmanniella</i> + <i>Kalometopia</i> + <i>Bresslauides</i>) | Unmasked | 14,820.5404 | 57.37 | 0.007 | 0.033 | 0.007 | Rejected |
| | 0.75 | 12,956.7026 | 50.15 | 0.004 | 0.012 | 0.003 | Rejected |
| | 0.90 | 11,589.6323 | 51.81 | 0.002 | 0.022 | 0.004 | Rejected |
| Sister relationship of Marynidae and Ilsiellidae | Unmasked | 14,765.5089 | 2.34 | 0.555 | 0.993 | 0.635 | Not rejected |
| | 0.75 | 12,908.0885 | 1.53 | 0.517 | 0.951 | 0.390 | Not rejected |
| | 0.90 | 11,539.1089 | 1.28 | 0.534 | 0.949 | 0.443 | Not rejected |
| Monophyly of <i>Maryna</i> | Unmasked | 14,784.0550 | 20.89 | 0.191 | 0.455 | 0.101 | Not rejected |
| | 0.75 | 12,927.6173 | 21.06 | 0.024 | 0.193 | 0.041 | Rejected |
| | 0.90 | 11,557.7743 | 19.95 | 0.086 | 0.505 | 0.124 | Not rejected |

^aDifference between log likelihoods of constrained and best scoring (unconstrained) tree.

(Table 1; Supplementary Fig. S3, arrows). Nevertheless, this split was still corroborated by three or four symmetric and one to six asymmetric nucleotide positions present in the six alignments analyzed (Table 1). On the other hand, there were no splits separating the Platyophryida together with the outgroup from the rest of colpodians in the phylogenetic networks. There were only some strongly statistically supported parallel edges that connected platyophryids with some but not all outgroup taxa (Supplementary Fig. S3). Interestingly, any primary nucleotide positions supporting the split of platyophryids from the rest of colpodians were found neither in the unmasked nor in the masked alignments. Therefore, the platyophryids-early hypothesis inferred from the strongly masked alignments is very likely artifactual and based on noisy positions and evolutionary substitution models. On the other hand, the bursariomorphids-early hypothesis may be artifactual as well due to problems with homology assessment of some nucleotide positions in the unmasked alignment. Since a sister group relationship of platyophryids and cyrtolophosidids could not be rejected by any statistical tree topology test (Table 2), the phylogenetic position of platyophryids in the strongly masked alignments should be, indeed, taken with caution. Nevertheless, there are no primary nucleotide positions corroborating the sister relationship between platyophryids and cyrtolophosidids. Consequently, their close relatedness is unlikely although not rejected by statistical tree topology tests.

Phylogenetic relationships within the order Colpodida

Tree- and network building methods consistently recognized with full or very strong statistical support the monophyletic origin of the order Colpodida, as defined by Foissner et al. (2011), i.e., including also members of the orders Bryophryida and Grossglockneriida (Fig. 1, Supplementary Figs. S1 and S3). This highly diverse cluster was supported also by asymmetric and noisy nucleotide positions, whose number ranged from five asymmetric and 21 noisy positions in the unmasked alignment to two asymmetric and five noisy positions in the 0.93 alignment (Table 1). Monophyly of the order Colpodida as defined by Foissner (1993), i.e., without bryophryids and grossglockneriids, could not be rejected by any statistical tree topology test performed on the unmasked and 0.90 alignments (Table 2). However, it could be rejected for the 0.75 alignment by the approximately unbiased ($p = 0.034$) and weighted Kishino–Hasegawa ($p = 0.039$) tests, but not by the weighted Shimodaira–Hasegawa test ($p = 0.186$). Interestingly, also clustering of bryophryids outside the Colpodida including grossglockneriids could not be refuted by any statistical tree topology test performed on all alignments (Table 2). None of these scenarios was, however, supported by primary nucleotide homologies, suggesting that the crown radiation of colpodids was very rapid and did not allow evolution and/or fixation of molecular synapomorphies in the comparatively conservative 18S rRNA gene.

Kinships within the order Colpodida were poorly resolved and usually weakly supported statistically. Many conflicts were recognized in the NeighborNet analyses (Supplementary Fig. S3) and in the softwired galled networks constructed from thousands of trees obtained during the stationary phase of the Bayesian MCMC analyses (Fig. 2, Supplementary Fig. S2). Network patterns thus revealed poor informativeness of the 18S rRNA gene to unambiguously resolve phylogenetic relationships among colpodids. Most conflicts concerned the phylogenetic position of *Bardeliella*, *Ilsiella*, *Sandmanniella*, marynids, bryophryids and grossglockneriids (Fig. 2). Most of these taxa were indicated equally good candidates for the deepest branches within the order Colpodida sensu Foissner et al. (2011).

Topology testing helped us to constrain some relationships within the core colpodids. Monophyly of the family Colpodidae sensu Foissner (1993) and its name-bearing genus *Colpoda* sensu Foissner (1993) could be rejected by all tree statistical topology tests conducted on the unmasked, 0.75 and 0.90 alignments. Likewise, a monophyletic origin of the family Hausmanniellidae sensu Foissner (1993) could be refuted. On the other hand, monophyly of the genus *Maryna* as well as of the families Marynidae and Ilsiellidae, both having a posteriorly displaced oral apparatus, could not be excluded by most topology tests given the three alignments analyzed and their best GTR + Γ + I evolutionary substitution models. The single exceptions were the approximately unbiased ($p = 0.024$) and weighted Kishino–Hasegawa ($p = 0.041$) tests conducted on the 0.75 alignment, which rejected monophyly of *Maryna* (Table 2).

Multi-dimensional scaling of taxa from the order Colpodida, based on genetic distances calculated under the heterogeneous substitution pattern among lineages, revealed that (Fig. 3): (1) bryophryids, marynids and ilsiellids represent a distinct cluster each, (2) *Bardeliella* and *Sandmanniella* are orphan genera within the order Colpodida, (3) *Repoma*, *Kalometopia* and *Exocolpoda* are orphan genera within the core colpodids, and (4) traditional *Colpoda* species either form small isolated clusters (e.g., *C. maupasi* and *C. ecaudata*) or group with morphologically more derived genera (e.g., *Bresslaua*, *Bressluides*, *Bromeliothrix* or *Hausmanniella*). Multi-dimensional scaling analyses thus indirectly corroborated non-monophyly of the family Colpodidae as well as of its type genus *Colpoda*. Pairwise genetic distances of colpodids were summarized in Supplementary Table S3.

Evolution of the oral ciliature

The morphological evolution of the oral apparatus was reconstructed from thousands of phylogenetic trees sampled during the stationary phase of the Bayesian MCMC analyses of the unmasked (Figs. 4 and 5) and the 0.90 alignment (data not shown). Using this strategy, we also accounted for uncertainty in the phylogenetic position of bursariomorphids and platyophryids as well as of some key colpodid taxa, such as *Bardeliella*, *Sandmanniella*, *Ilsiella*,

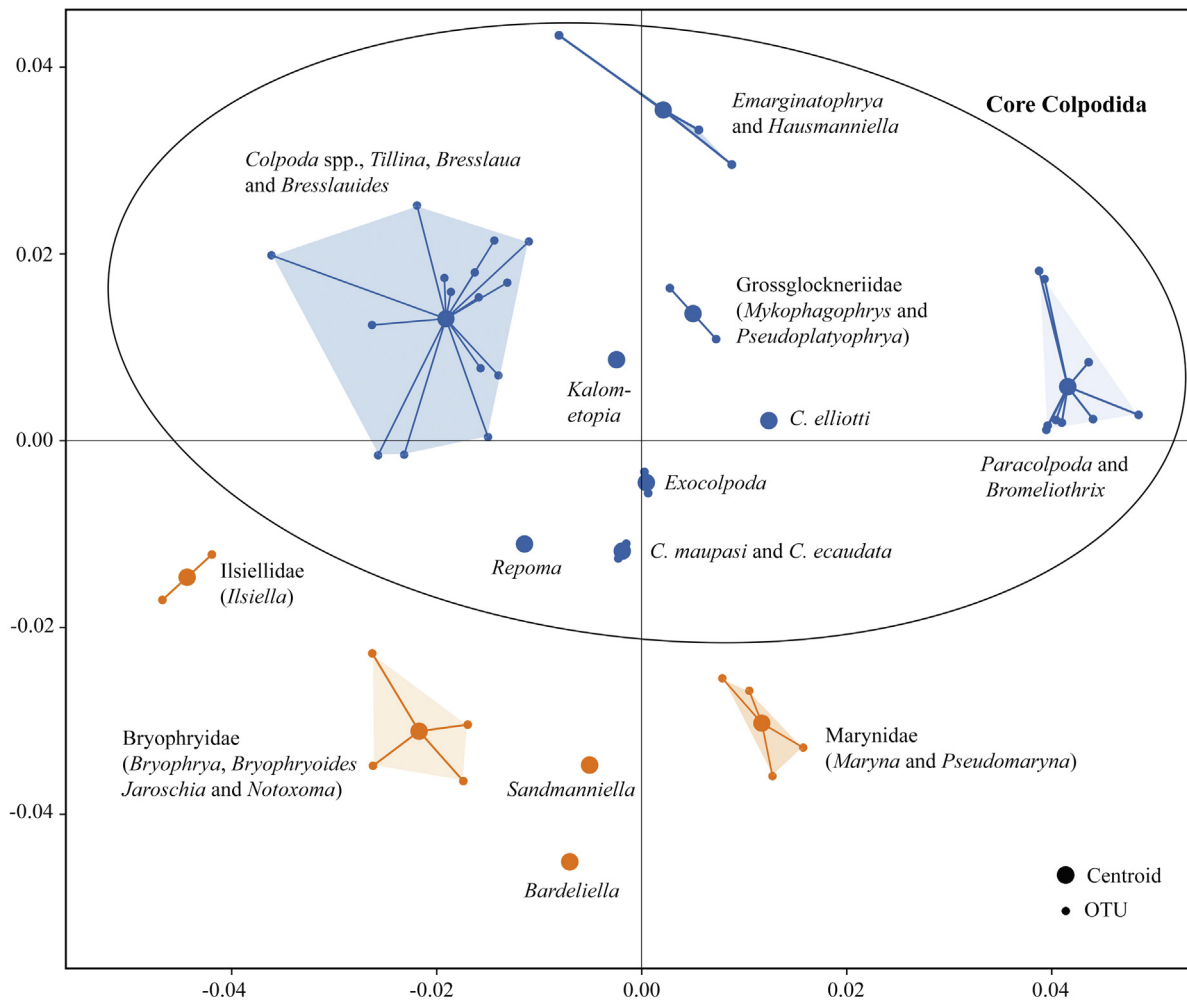


Fig. 3. Multidimensional scaling of members of the order Colpodida based on pairwise evolutionary divergences estimated from the unmasked alignment in MEGA. Groups are delimited when corresponding clusters are recovered also in phylogenetic analyses. Note that traditional *Colpoda* species form clusters with morphologically more derived genera (e.g., *Bresslaua*, *Bresslauides*, *Bromeliothrix*, *Hausmanniella*) and distances between colpodid groups are much larger than between individual genera of bryophryids. OTU = operational taxonomic unit.

marynids, bryophryids and grossglockneriids. Although the 50%-majority rule consensus Bayesian trees inferred from the unmasked and 0.90 alignments differed in the position of bursariomorphids and platyophryids (Fig. 1, Supplementary Fig. S1), the reconstruction of ancestral oral morphologies of the main four colpodid lineages was unequivocal and therefore only results from the unmasked alignment are presented (Figs. 3 and 4). The right oral field was composed of dikiinetids and the left oral field consisted of brick-shaped adoral organelles already in the last common ancestor (LCA) of the class Colpodea, supporting the view of Foissner et al. (2011). These plesiomorphic conditions were maintained also in the LCAs of the Bursariomorpha, Platyophryida and Cyrtolophosidida. However, the oral ciliature overcame a dramatic transformation in the bryophryid-grossglockneriid-colpodid (BGC) cluster. The LCA of this assemblage very likely had a right oral ciliature composed of polykinetids and a complex left oral ciliature built from brick-shaped organelles in the anterior part and from a polykinetidal field in the

posterior part. The probabilistic approach of the stochastic mapping also indicated that the right oral ciliature became polykinetidal independently in the LCA of *Bursaria* and in the LCA of the BGC cluster. Stochastic mapping also suggested that regardless of the phylogenetic position of *Ilsiella*, plesiomorphic features of its oral ciliature are homoplasies, i.e., they were not inherited from the LCA of the BGC cluster whose oral ciliature was complex (Figs. 4 and 5).

Discussion

Phylogeny of the class Colpodea

The recent 18S rRNA gene phylogenies suggested several changes in the traditional morphology-based framework of the class Colpodea (for reviews, see Foissner 1993 and Foissner et al. 2011). However, the present evaluation of the quality of phylogenetic information in the colpodid 18S rRNA gene with multiple statistical approaches showed

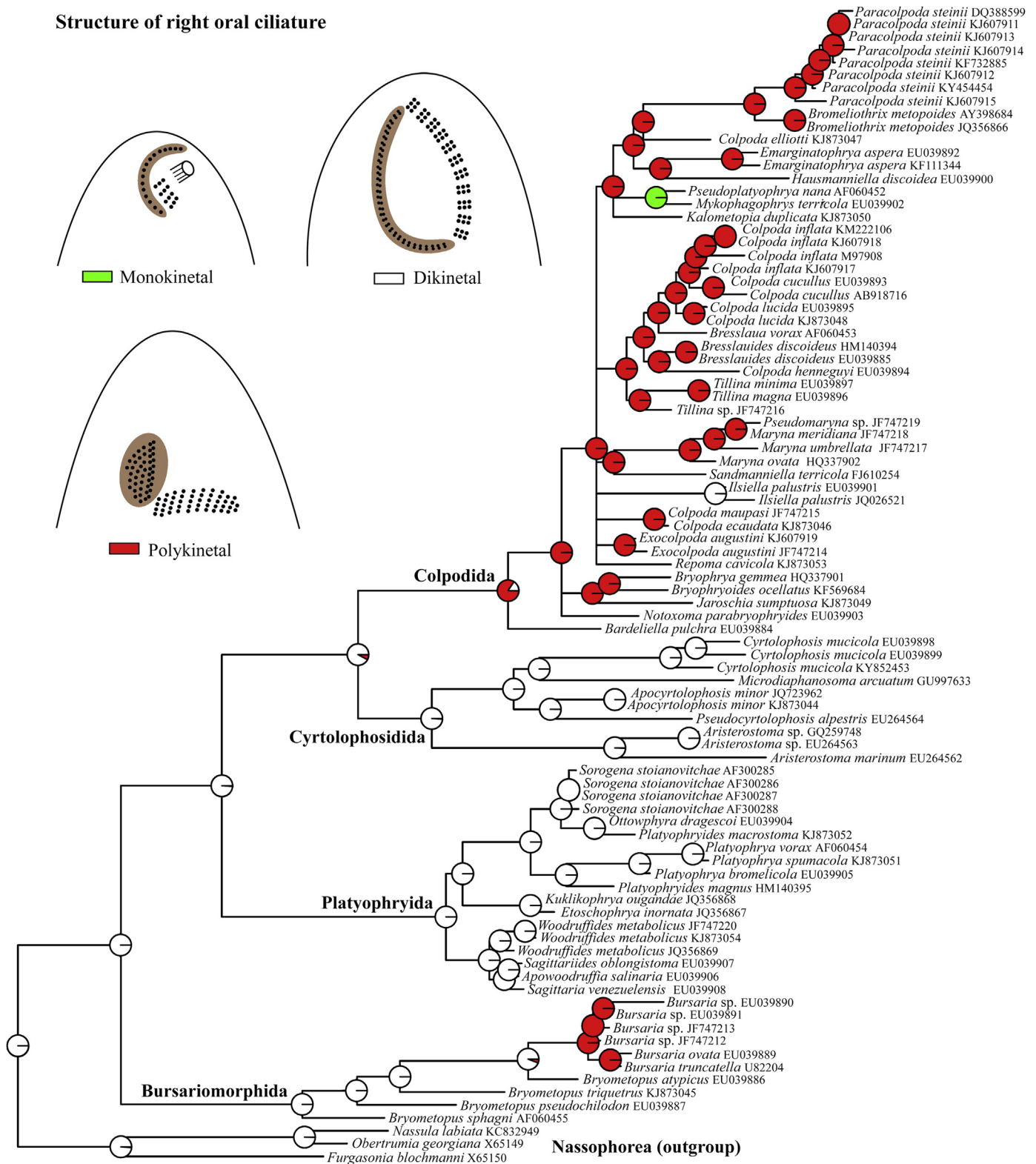


Fig. 4. Reconstruction of ancestral states of the right oral ciliature based on a set of thousand randomly selected trees from the stationary phase of the Bayesian MCMC analyses of the unmasked alignment. Relative proportions of character states were mapped as pie charts onto the nodes of the 50%-majority rule Bayesian consensus tree shown in Fig. 1. The right oral field was composed of dikinetids already in the last common ancestor of the class Colpodea and this plesiomorphic condition was maintained also in the last common ancestors of the orders Bursariomorphida, Platyophryida and Cyrtolophosidida. The probabilistic approach of the stochastic mapping also indicated that the right oral ciliature became polykinetal independently in the last common ancestor of the genus *Bursaria* and in that of the order Colpodida including bryophryids and grossglockneriids.

Structure of left oral ciliature

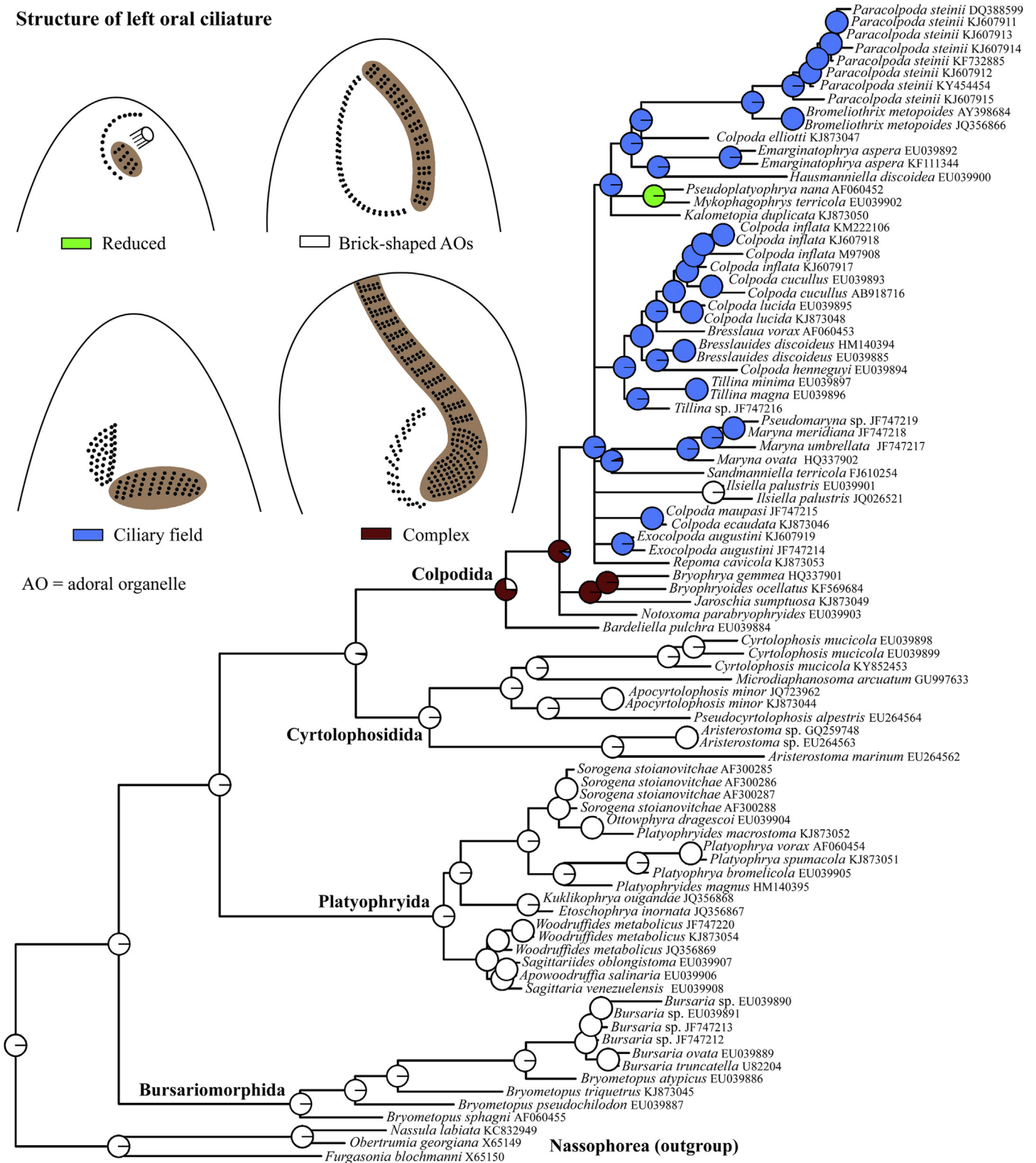
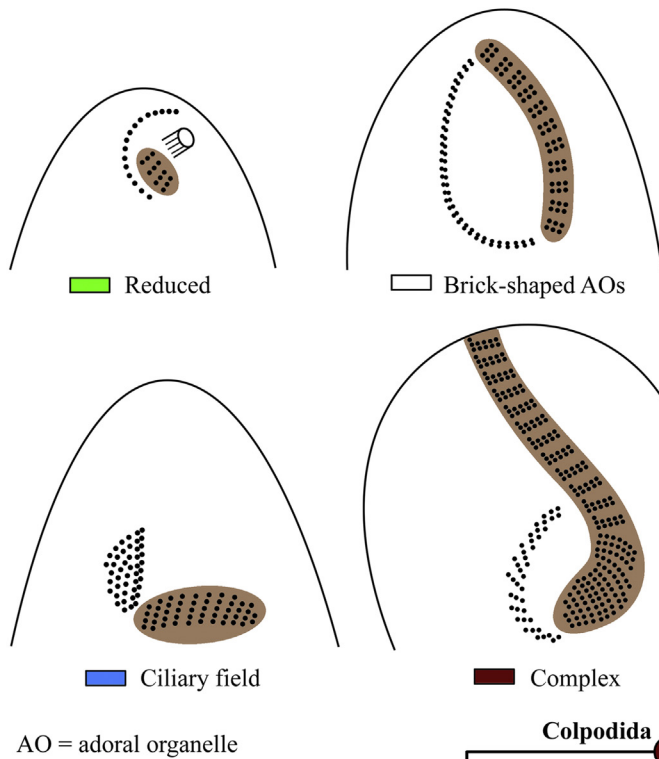


Fig. 5. Reconstruction of ancestral states of the left oral ciliature based on a set of thousand randomly selected trees from the stationary phase of the Bayesian MCMC analyses of the unmasked alignment. Relative proportions of character states were mapped as pie charts onto the nodes of the 50%-majority rule Bayesian consensus tree shown in Fig. 1. The left oral field was composed of brick-shaped adoral organelles (AOs) already in the last common ancestor of the class Colpodea, and this plesiomorphic condition was maintained also in the last common ancestors of the orders Bursariomorphida, Platyophryida and Cyrtolophosidida. However, the left oral ciliature overcame a dramatic transformation in the last common ancestor of the order Colpodida, where it became composed from brick-shaped organelles in the anterior part and a polykinetal field in the posterior part.

that the evolutionary relationships and molecular delimitation of the main colpodean lineages are not so clear, as it may appear at first glance. Specifically, we revealed three issues in the molecular phylogenies of the class Colpodea: (1) the phylogenetic positions of bursariomorphids and platyophryids are unstable and depend on the alignment masking (Fig. 1, Supplementary Fig. S1), (2) the sister relationship of platyophryids and cyrtolophosidids cannot be excluded by statistical tree topology tests (Table 2) and (3) clustering of bryophryids and grossglockneriids outside colpodids are also statistically valid possibilities (Table 2). Interestingly, phylogenetic inferences using mitochondrial SSU rDNA do not support the bursariomorphids-early hypothesis, but with variable statistical support corroborate the platyophryids-early hypothesis (Dunthorn et al. 2011). Considering the phylogenetic uncertainty in 18S rRNA gene inferences, the concept of the order Cyrtolophosidida including platyophryids and sorogenids as well as the distinctness of the orders Bryophryida and Grossglockneriida still remain reliable taxonomic hypotheses open for further testing, when sequences from other phylogenetically informative genes become available. However, bryophryids, grossglockneriids and colpodids are indisputably very closely related and belong to the crown radiation of the class Colpodea, as already recognized in all previous analyses (Bourland et al. 2011; Dunthorn et al. 2012; Foissner et al. 2014; Quintela-Alonso et al. 2011). This highly diverse cluster is supported also by primary nucleotide homologies (Table 1), corroborating the concept of the order Colpodida revised by Foissner et al. (2011). On the other hand, the monophyly and validity of the former order Bryometopida are unambiguously refuted and bryometopids represent an old stem lineage that is at best to be submerged within the order Bursariomorphida, as already proposed by Foissner et al. (2011). Although our present analyses indicated that there are still some problems in the higher classification of the Colpodea, we prefer not to perform further changes until more data become available.

Evolutionary taxonomy of the order Colpodida

Natural classification of the highly diverse order Colpodida remains the hardest riddle within the class Colpodea (Dunthorn et al. 2008, 2009, 2012; Foissner and Stoeck 2009; Foissner et al. 2011, 2014). Possible reasons are uninformative of the 18S rRNA gene and an uncoupling of morphological and molecular evolution. The latter phenomenon might have caused inconsistencies between morphological and molecular classifications. In this respect, we have recognized four types of taxa groups (Fig. 6):

(1) The first type is characterized by small morphological and molecular differences (genetic distance <0.015), when two species are compared (Fig. 6A). A good example is the type species *Colpoda cucullus* and *C. inflata*. Both are morphologically rather similar, shar-

ing the same oral pattern and general body bauplan (Foissner 1993). Likewise, their genetic distance is comparatively small (0.011 ± 0.003 ; Supplementary Table S3) and both are placed close to each other in phylogenetic trees (Figs. 1 and 2). In this case, there is no problem between morphological and molecular classifications and both species can be unambiguously assigned to the same genus.

- (2) The second type includes taxa pairs with small morphological but comparatively deep molecular divergence (genetic distance >0.030) (Fig. 6B). For instance, *C. cucullus* is morphologically rather similar to *C. henneguyi* in the general body organization but their genetic distance is three times greater (0.032 ± 0.005) than between *C. cucullus* and *C. inflata* (0.011 ± 0.003) (Supplementary Table S3). This problem is most likely caused by morphostasis, a phenomenon when morphological evolution slows down but molecular evolution proceeds. Morphostasis typically causes paraphyly problems in the colpodean tree of life. This phenomenon is, however, highly important in reconstruction and understanding morphological evolution, as already recognized in the alveolate evolution by Leander and Keeling (2003).
- (3) The third type is, for instance, represented by *C. cucullus* and *Bresslaua vorax* (Fig. 6C). *Bresslaua*, a predator, clearly differs morphologically from *Colpoda*, a bacterivore, by the large, funnel-shaped buccal cavity (Foissner, 1993). Interestingly, the genetic distance of *C. cucullus* and *B. vorax* (0.024 ± 0.005) is even smaller than between *C. cucullus* and *C. henneguyi* (0.032 ± 0.005) (Supplementary Table S3), indicating that *C. henneguyi* diverged earlier from *C. cucullus* than did *B. vorax*. Classification of *C. cucullus* and *B. vorax* into distinct genera appears justified in a morphological but not in a molecular point of view. This problem can be overcome, when evolutionary classification (Mayr and Bock 2002) is anticipated, as already suggested by Foissner et al. (2011) and Dunthorn et al. (2012).
- (4) The last group is characterized by large morphological and comparatively deep molecular divergence (genetic distance >0.030), when two species are compared. A good example is *C. cucullus* and the grossglockneriid *Pseudoplatyophrya nana* (Fig. 6D). The latter species is morphologically highly derived, its oral ciliary structures are reduced and a special feeding tube is developed (Foissner 1993). Genetic distance is also comparatively high (0.032 ± 0.005 ; Supplementary Table S3) and they even belong to different clusters in the ordination diagram (Fig. 3). In this case, there is no problem between morphological and molecular classification and both species can be placed in different genera and also in different higher taxa. Interestingly, the genetic distance of *C. cucullus* from morphologically highly dissimilar bryophryids, marynids and ilsiliellids ranges between 0.041 and 0.059 (Supplementary Table S3), indicating that these taxa diverged from *C. cucullus* even before

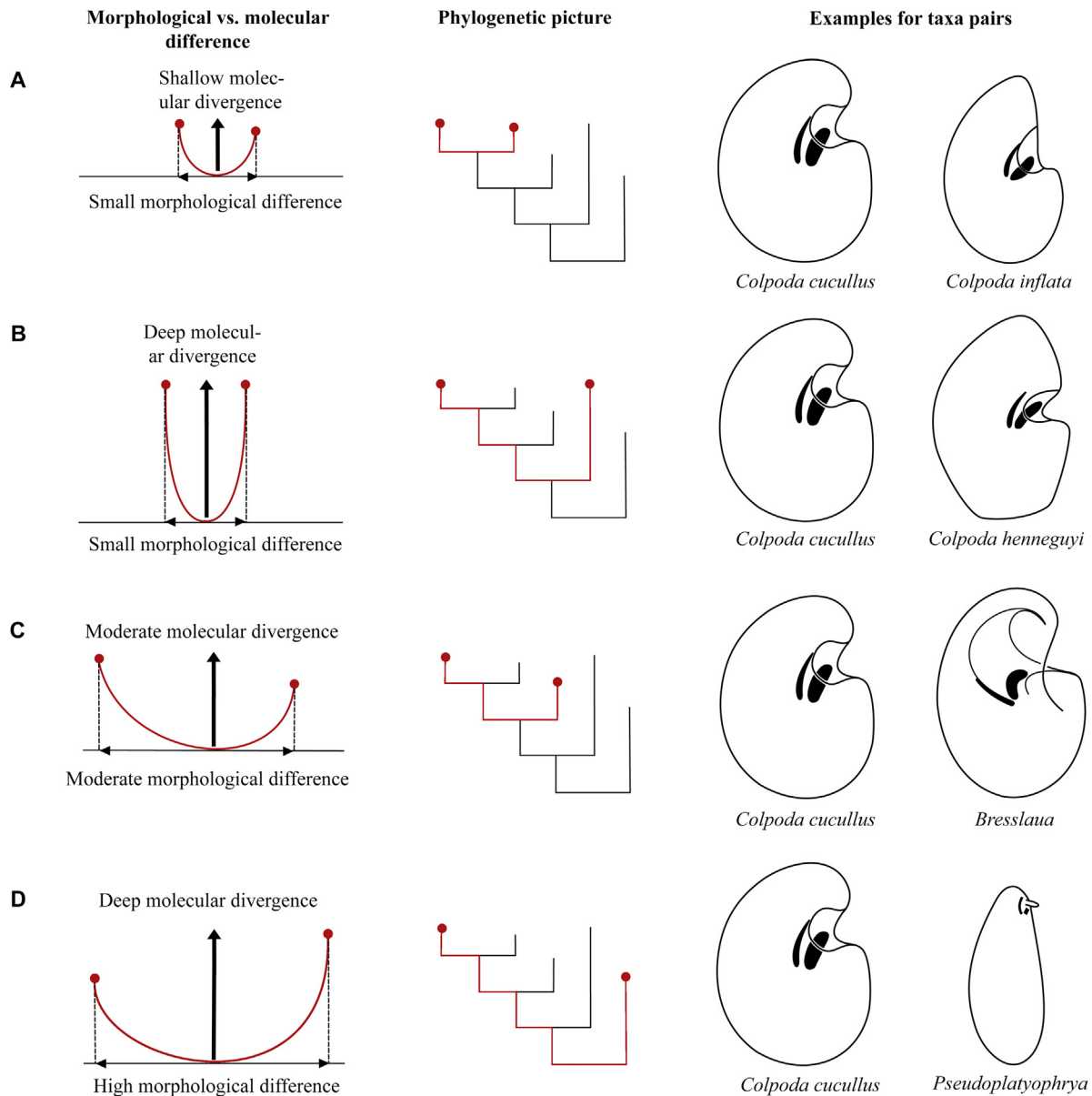


Fig. 6. Morphological and molecular differences between *Colpoda*-like and morphologically derived colpodids branched off from the Ur-*Colpoda* stem lineage. Molecular divergence is a function of time which runs upward and is denoted by thick arrows. **A:** Small morphological and molecular difference shown in *C. cucullus* and *C. inflata*. **B:** Small morphological and high molecular difference shown in *C. cucullus* and *C. henneguyi*. **C:** Moderate morphological and molecular difference shown in *C. cucullus* and *B. vorax*. **D:** High morphological and molecular difference shown in *C. cucullus* and *P. nana*.

grossglockneriids. Bryophryids, marynids and ilsliellids represent a distinct cluster each in the ordination diagram similar as grossglockneriids (Fig. 3), corroborating their genetic and taxonomic distinctness within the order Colpodida.

Taking into account that morphological and molecular evolution do not necessarily run in tandem, might significantly help to reconcile morphological and molecular phylogenies of ciliates. Already Foissner et al. (2011) and Dunthorn et al. (2012) advocated the “Ur-*Colpoda*” concept, in which *Colpoda* represents the stem lineage. Both, *Colpoda*-like

taxa and morphologically more derived taxa, such as *Bresslauides*, *Hausmanniella* or *Pseudoplatyophrya*, might have branched off from the Ur-*Colpoda* stem lineage. In this light, the validity of the paraphyletic *Colpoda* as well as of the derived genera appears justified, since this taxonomic concept preserves information not only on morphology but also on ecology and evolutionary processes (Hörandl 2014).

Splitting of the traditional genus *Colpoda*

The traditional genus *Colpoda* has been always depicted in molecular phylogenies as non-monophyletic (Bourland et al.

2011, 2012, 2014; Dunthorn et al. 2009, 2012; Foissner et al. 2011, 2014; Quintela-Alonso et al. 2011). Also statistical tree topology tests have consistently rejected monophyly of this species-rich genus (Table 2). To solve this taxonomic problem, several genera were resurrected and some other were established: *Tillina*, *Repoma*, *Paracolpoda*, *Exocolpoda* and *Emarginatophrya*. Foissner et al. (2011) redefined *Tillina* by having a large body carrying a distinct postoral groove, a contractile vacuole with collecting canals, a large oral cavity, several to many roof kineties and oblong extrusomes. *Repoma* also possesses a diagonal groove and a contractile vacuole with collecting canals but differs from *Tillina* by having multiple micronuclei and a comparatively small oral cavity (Foissner 1993; Novotny 1970; Novotny et al. 1977). Foissner (1985) restricted *Paracolpoda* to *C. steinii* and, at the present state of knowledge, this resurrected genus could be characterized by two long caudal cilia, left oral cilia forming a conspicuous beard, and at least some left somatic kineties shortened posteriorly (Dragesco and Dragesco-Kernéis 1986; Foissner 1993, 2016). *Exocolpoda* is outstanding for division in freely motile (non-encysted) condition, a small, conical vestibulum and a right oral polykinetid composed of few to many short, more or less disordered kineties (Foissner et al. 2002). *Emarginatophrya* is distinguished by a distally emarginated left oral polykinetid (Foissner 2016). However, also these resurrected and new colpodid genera have not helped to completely erase the paraphyly problem of *Colpoda* because generic apomorphies which could define several problematic molecular lineages (e.g., *C. maupasi*, *C. ecaudata*, *C. elliotti*, *C. henneguyi*) have been as yet not recognized.

Visualization of the colpodid pair-wise genetic distances with multidimensional scaling also revealed that grouping of *Colpoda*-like species and morphologically divergent taxa does not mirror traditional taxonomic concepts (Fig. 3). Although distances between some traditional *Colpoda* species are much larger than between individual genera of bryophryids, no morphological apomorphies sustaining the colpodid groups delimited by multidimensional scaling have been recognized so far. Moreover, the softwired galled network unraveled that (1) *Repoma* might be a sister group of *C. maupasi* and *C. ecaudata*, indicating that these taxa with a comparatively small oral cavity could represent a distinct lineage within the Colpodidae and (2) *Tillina* might be paraphyletic, which would on the other hand question its distinctness in the already paraphyletic genus *Colpoda* (Fig. 2). The phylogenetic positions of *Exocolpoda*, *Paracolpoda* and *Emarginatophrya* are so far without conflicts, which would corroborate their validity. Obviously only an integrative morphological-molecular approach, along with critical examination of morphological and molecular data quality by multiple tests, can help to decipher the intricate evolutionary history of colpodids. The importance of integrative approach in phylogenetic studies of ciliates was reviewed by Vďačný (2017).

Application of evolutionary taxonomy concepts in ciliates

Taxonomy comprises the theory and practice of describing, naming, and ordering groups of organisms (Wägele 2005; Wiley and Lieberman 2011). It is vitally important that taxonomy is logically consistent with phylogeny and integrated into the field of evolutionary theory (Wiley et al. 1991). Unfortunately, the existing morphology-based taxonomy of ciliates is often discordant with molecular frameworks, especially at genus and family levels (e.g., Foissner et al. 2004, 2011; Liu et al. 2016; Lynn and Wright 2013; Omar et al. 2017; Pan and Stoeck 2017; Shao et al. 2014; Sun et al. 2012; Vďačný et al. 2018). Recognizing generic and family characters is not straightforward until a sound phylogeny is available. The biological rationale of this problem was already discussed by Wiley et al. (1991). Briefly, there are no processes that allow for a genus or a family to give rise to other taxa and each monophyletic group begins as a single species in an array of processes termed speciation. Since there are no processes such as “genusation” and “familization”, apomorphies defining monophyletic groups arisen from the ancestral species need to be *a posteriori* recognized when a sound phylogeny become available. However, due to morphostasis of some lineages this can be a very difficult task in ciliates, causing traditional ciliate genera to become paraphyletic in molecular analyses. Although application of evolutionary taxonomy has been criticized (for a review, see Wägele 2005 and Wiley and Lieberman 2011), the paraphyly problems are sometimes so pronounced that evolutionary systematics appear to be a more practical solution than phylogenetic systematics (Hörandl 2006, 2007, 2014; Hörandl and Stuessy 2010; Mayr and Bock 2002; Stuessy and Hörandl 2014). These authors argued that holophyletic (=monophyletic *s. s.*) groups mostly reflect extinction gaps, while paraphyletic groups appear in clades having ecological shifts, as also recognized in the ciliate classes Armophorea and Litostomatea (Vďačný and Rajter 2015; Vďačný et al. 2014, 2018). According to Hörandl (2014), recognizing of paraphyletic and monotypic groups preserves information on morphology, ecology, and evolutionary processes. Hörandl (2014) also stated that this pluralistic approach facilitates practicability and stability of taxonomic work, as the broadening of criteria restricts the number of equally valid options for classification. Moreover, preserving information content on phenotypes ensures connection to traditional literature and to modern information systems.

In the traditional ciliate systematics, new taxa are established on the basis of derived, shared morphological characters, i.e., synapomorphies. However, when morphological characteristics used as diagnostic features of taxa turn out to be plesiomorphies or homoplasies, this situation has to be solved. The best practice is to search for new morphological synapomorphic characters that will help to delimit the natural units of evolution and will erase the para- or poly-

phyly problems. If such characters cannot be found or may even not exist, the evolutionary taxonomy concept could be applied (e.g., Foissner et al. 2011; Vďačný and Rajter 2015; Vďačný et al. 2018), as discussed above. Or molecular characters could be used to resolve taxonomic incongruities. For instance, Sun et al. (2012, 2013) used molecular characters and secondary structure features of the 18S rRNA and the ITS2 molecule to solve the paraphyly problem and to redefine the genus *Vorticella* and the families Vorticellidae and Astylozoidae. This strategy could be broadened in the context of ecological niches and physiological properties, as already documented on the example of peritrichs (Sun et al. 2016) and euplotids (Petroni et al. 2002; Zhao et al. 2018). However, one should be aware that molecular, ecological and physiological characters are influenced by the same problems of variations as morphological traits. Moreover, molecular characters can be also homoplastic due to various selection pressures (Rajter and Vďačný 2018) or molecular synapomorphies might be not fixed or might have been erased by multiple substitutions that took place during the very long evolutionary history of ciliates (Rataj and Vďačný 2018). Since the ciliate taxonomy has now become a very complex matter, an integrative approach is an absolute necessity to establish a natural, phylogeny-based system.

Acknowledgements

This work was supported by the Slovak Research and Development Agency under the contract No. APVV-15-0147 and by the Grant Agency of the Ministry of Education, Science, Research and Sport of the Slovak Republic and Slovak Academy of Sciences under the Grants VEGA 1/0041/17 and VEGA 1/0114/16. Financial support was provided also by the Austrian Science Fund (FWF Project P26325_B16) and the Wilhelm and Ilse Foissner Stiftung.

Appendix A. Supplementary data

Supplementary data associated with this article can be found, in the online version, at <https://doi.org/10.1016/j.ejop.2018.11.003>.

References

- Aescht, E., Foissner, W., Mulisch, M., 1991. Ultrastructure of the mycophagous ciliate *Grossglockneria acuta* (Ciliophora, Colpodea) and phylogenetic affinities of colpoid ciliates. *Eur. J. Protistol.* 26, 350–364.
- Bollback, J.P., 2006. SIMMAP: stochastic character mapping of discrete traits on phylogenies. *BMC Bioinf.* 7, 88.
- Bory de St. Vincent, J.-B.-G.-M., 1826. *Essai d'une Classification des Animaux Microscopiques*. Agasse, Paris.
- Bourland, W., Vďačný, P., Davis, M.C., Hampikian, G., 2011. Morphology, morphometrics, and molecular characterization of *Bryophrya gemmea* n. sp. (Ciliophora, Colpodea): implications for the phylogeny and evolutionary scenario for the formation of oral ciliature in the order Colpodida. *J. Eukaryot. Microbiol.* 58, 22–36.
- Bourland, W., Hampikian, G., Vďačný, P., 2012. Morphology and phylogeny of a new woodruffiid ciliate, *Etoschophrya inornata* sp. n. (Ciliophora, Colpodea, Platyophryida), with an account on evolution of platyophryids. *Zool. Scr.* 41, 400–416.
- Bourland, W.A., Wendell, L., Hampikian, G., Vďačný, P., 2014. Morphology and phylogeny of *Bryophryoides ocellatus* n. g., n. sp. (Ciliophora, Colpodea) from in situ soil percolates of Idaho, U.S.A. *Eur. J. Protistol.* 50, 47–67.
- Bryant, D., Moulton, V., 2004. NeighborNet: an agglomerative algorithm for the construction of planar phylogenetic networks. *Mol. Biol. Evol.* 21, 255–265.
- Buitkamp, U., Song, W., Wilbert, N., 1989. Ein neuer hypostomer Ciliat, *Pseudochlamydonella rheophila* sp. n. (Pseudochlamydonellidae fam. nov., *Pseudochlamydonella* gen. n.) im Aufwuchs eines Baches. *Acta Protozool.* 28, 69–75.
- Dragesco, J., Dragesco-Kernéis, A., 1986. Ciliés libres de l'Afrique intertropicale. *Faune Trop.* 26, 1–559.
- Dunthorn, M., Foissner, W., Katz, L.A., 2008. Molecular phylogenetic analysis of class Colpodea (phylum Ciliophora) using broad taxon sampling. *Mol. Phylogenet. Evol.* 46, 316–327.
- Dunthorn, M., Eppinger, M., Schwarz, M.V.J., Schweikert, M., Boenigk, J., Katz, L.A., Stoeck, T., 2009. Phylogenetic placement of the Cyrtolophosididae Stokes, 1888 (Ciliophora; Colpodea) and neotypification of *Aristerostoma marinum* Kahl, 1931. *Int. J. Syst. Evol. Microbiol.* 59, 167–180.
- Dunthorn, M., Foissner, W., Katz, L.A., 2011. Expanding character sampling for ciliate phylogenetic inference using mitochondrial SSU-rDNA as a molecular marker. *Protist* 162, 85–99.
- Dunthorn, M., Katz, L., Stoeck, T., Foissner, W., 2012. Congruence and indifference between two molecular markers for understanding oral evolution in the Maryniidae sensu lato (Ciliophora, Colpodea). *Eur. J. Protistol.* 48, 297–304.
- Dunthorn, M., Otto, J., Berger, S.A., Stamatakis, A., Mahé, F., Romac, S., de Vargas, C., Audic, S., BioMarKs Consortium, Stock, A., Kauff, F., Stoeck, T., 2014. Placing environmental next-generation sequencing amplicons from microbial eukaryotes into a phylogenetic context. *Mol. Biol. Evol.* 31, 993–1009.
- Fernández-Galiano, D., 1979. Transfer of the widely known “spirotrich” ciliate *Bursaria truncatella* O.F.M. to the Vestibulifera as a separate order there, the Bursariomorpha. *Trans. Am. Microsc. Soc.* 98, 447–454.
- Foissner, W., 1978. Das Silberliniensystem und die Infraciliatur der Gattungen *Platyophrya* Kahl, 1926, *Cyrtolophosis* Stokes, 1885 und *Colpoda* O. F. M., 1786: Ein Beitrag zur Systematik der Colpodida (Ciliata, Vestibulifera). *Acta Protozool.* 17, 215–231.
- Foissner, W., 1980. Colpodide Ciliaten (Protozoa: Ciliophora) aus alpinen Böden. *Zool. Jb. Syst.* 107, 391–432.
- Foissner, W., 1985. Klassifikation und Phylogenie der Colpodea (Protozoa: Ciliophora). *Arch. Protistenkd.* 129, 239–290.
- Foissner, W., 1987. Soil protozoa: fundamental problems, ecological significance, adaptations in ciliates and testaceans, bioindicators, and guide to the literature. *Prog. Protistol.* 2, 69–212.
- Foissner, W., 1990. *Kuehneltiella terricola* gen. nov., sp. nov. — a carnivorous ciliate (Protozoa, Ciliophora) from a sandy soil in Australia. *Biol. Fertil. Soils* 9, 110–118.
- Foissner, W., 1993. Colpodea (Ciliophora). *Protozoenfauna* 4, 1–798.

- Foissner, W., 2016. Terrestrial and semiterrestrial ciliates (Protozoa, Ciliophora) from Venezuela and Galápagos. *Denisia* 35, 1–912.
- Foissner, W., Stoeck, T., 2009. Morphological and molecular characterization of a new protist family, Sandmanniellidae n. fam. (Ciliophora, Colpodea), with description of *Sandmanniella terricola* n. g., n. sp. from the Chobe floodplain in Botswana. *J. Eukaryot. Microbiol.* 56, 472–483.
- Foissner, W., Blatterer, H., Berger, H., Kohmann, F., 1991. Taxonomische und ökologische Revision der Ciliaten des Saprobien-systems — Band I: Cyrtophorida, Oligotrichida, Hypotrichida, Colpodea. *Informationsberichte des Bayerischen Landesamtes für Wasserwirtschaft* 1 (91), 1–478.
- Foissner, W., Berger, H., Schaumburg, J., 1999. Identification and ecology of limnetic plankton ciliates. *Informationsberichte des Bayerischen Landesamtes für Wasserwirtschaft* 3 (99), 1–793.
- Foissner, W., Agatha, S., Berger, H., 2002. Soil ciliates (Protozoa, Ciliophora) from Namibia (Southwest Africa) with emphasis on two contrasting environments, the Etosha region and the Namib Desert. *Denisia* 5, 1–1459.
- Foissner, W., Moon-van der Staay, S.Y., van der Staay, G.W.M., Hackstein, J.H.P., Krautgartner, W.-D., Berger, H., 2004. Reconciling classical and molecular phylogenies in the stichotrichines (Ciliophora, Spirotrichea), including new sequences from some rare species. *Eur. J. Protistol.* 40, 265–281.
- Foissner, W., Stoeck, T., Agatha, S., Dunthorn, M., 2011. Intra-class evolution and classification of the Colpodea (Ciliophora). *J. Eukaryot. Microbiol.* 58, 397–415.
- Foissner, W., Bourland, W.A., Wolf, K.W., Stoeck, T., Dunthorn, M., 2014. New SSU-rDNA sequences for eleven colpodeans (Ciliophora, Colpodea) and description of *Apocrytlophosis* nov. gen. *Eur. J. Protistol.* 50, 40–46.
- Gentekaki, E., Kolisko, M., Gong, Y., Lynn, D., 2017. Phylogenomics solves a long-standing evolutionary puzzle in the ciliate world: the subclass Peritrichia is monophyletic. *Mol. Phylogenet. Evol.* 106, 1–5.
- Gimmler, A., Korn, R., de Vargas, C., Audic, S., Stoeck, T., 2016. The Tara Oceans voyage reveals global diversity and distribution patterns of marine planktonic ciliates. *Sci. Rep.* 6, 33555.
- Gruber, A., 1879. *Neue Infusorien*. *Z. Wiss. Zool.* 33, 439–466.
- Guindon, S., Gascuel, O., 2003. A simple, fast, and accurate algorithm to estimate large phylogenies by maximum likelihood. *Syst. Biol.* 52, 696–704.
- Guindon, S., Dufayard, J.F., Lefort, V., Anisimova, M., Hordijk, W., Gascuel, O., 2010. New algorithms and methods to estimate maximum-likelihood phylogenies: assessing the performance of PhyML 3.0. *Syst. Biol.* 59, 307–321.
- Hörandl, E., 2006. Paraphyletic versus monophyletic taxa — evolutionary versus cladistic classifications. *Taxon* 55, 564–570.
- Hörandl, E., 2007. Neglecting evolution is bad taxonomy. *Taxon* 56, 1–5.
- Hörandl, E., 2014. Nothing in taxonomy makes sense except in the light of evolution: examples from the classification of *Ranunculus*. *Ann. Mo. Bot. Gard.* 100, 14–31.
- Hörandl, E., Stuessy, T.F., 2010. Paraphyletic groups as natural units of biological classification. *Taxon* 59, 1641–1653.
- Hunter, J.D., 2007. Matplotlib: a 2D graphics environment. *Comput. Sci. Eng.* 9, 90–95.
- Huson, D.H., 1998. SplitsTree: a program for analyzing and visualizing evolutionary data. *Bioinformatics* 14, 68–73.
- Huson, D.H., Bryant, D., 2006. Application of phylogenetic networks in evolutionary studies. *Mol. Biol. Evol.* 23, 254–267.
- Huson, D.H., Scornavacca, C., 2012. Dendroscope 3: an interactive tool for rooted phylogenetic trees and networks. *Syst. Biol.* 61, 1061–1067.
- Kumar, S., Stecher, G., Tamura, K., 2016. MEGA7: molecular evolutionary genetics analysis version 7.0 for bigger datasets. *Mol. Biol. Evol.* 33, 1870–1874.
- Leander, B.S., Keeling, P.J., 2003. Morphostasis in alveolate evolution. *Trends Ecol. Evol.* 18, 395–402.
- Liu, W., Xu, D., Ma, H., Al-Farraj, S.A., Warren, A., Yi, Z., 2016. Taxonomy and molecular systematics of three oligotrich (s.l.) ciliates including descriptions of two new species, *Strombidium guangdongense* sp. nov. and *Strombidinopsis sinicum* sp. nov. (Protozoa, Ciliophora). *Syst. Biodivers.* 14, 452–465.
- Lynn, D.H., 1976. Comparative ultrastructure and systematics of the Colpodida: structural conservatism hypothesis and a description of *Colpoda steinii* Maupas, 1883. *J. Protozool.* 23, 302–314.
- Lynn, D.H., 1978. Comparative ultrastructure and systematics of the Colpodida. *Diss. Abstr. Int.* 38, 1–2.
- Lynn, D.H., 1979. Fine structural specializations and evolution of carnivory in *Bresslaua* (Ciliophora, Colpodida). *Trans. Am. Microsc. Soc.* 98, 353–368.
- Lynn, D.H., 2008. *The Ciliated Protozoa. Characterization, Classification, and Guide to the Literature*, 3rd ed. Springer, Dordrecht.
- Lynn, D.H., Kolisko, M., 2017. Molecules illuminate morphology: phylogenomics confirms convergent evolution among ‘oligotrichous’ ciliates. *Int. J. Syst. Evol. Microbiol.* 67, 3676–3682.
- Lynn, D.H., Wright, A.-D.G., 2013. Biodiversity and molecular phylogeny of Australian *Clevelandella* species (class Armophorea, order Clevelandellida, family Clevelandellidae), intestinal endosymbiotic ciliates in the wood-feeding roach *Panesthia cribrata* Saussure, 1864. *J. Eukaryot. Microbiol.* 60, 335–341.
- Lynn, D.H., Kolisko, M., Bourland, W., 2018. Phylogenomic analysis of *Nassula variabilis* n. sp., *Furgasonia blochmanni*, and *Pseudomicrothorax dubius* confirms a nassophorean clade. *Protist* 169, 180–189.
- Mayr, E., Bock, W.J., 2002. Classifications and other ordering systems. *J. Zool. Syst. Evol. Res.* 40, 169–194.
- Miller, M.A., Pfeiffer, W., Schwartz, T., 2010. Creating the CIPRES Science Gateway for inference of large phylogenetic trees. In: *Proceedings of the Gateway Computing Environments Workshop (GCE)*, New Orleans, LA, pp. 1–8.
- Müller, O.F., 1773. *Vermium Terrestrium et Fluviatilium, seu Animalium Infusiorum, Helminthicorum et Testaceorum, non Marinarum, Succincta Historia*. Heineck & Faber, Havnix & Lipsiæ.
- Novotny, R.T., 1970. The morphology and autecology of *Repoma spiralis*, a new genus of trichostomous treehole ciliates, found in the southwestern United States. *Diss. Abstr. Int.* 31B, 5181.
- Novotny, R.T., Lynn, D.H., Evans, F.R., 1977. *Colpoda spiralis* sp. n., a colpodid ciliate found inhabiting treeholes (Colpodida, Ciliophora). *J. Protozool.* 24, 364–369.
- Omar, A., Zhang, Q., Zou, S., Gong, J., 2017. Morphology and phylogeny of the soil ciliate *Metopus yantaiensis* n. sp. (Ciliophora, Metopida), with identification of the intracellular bacteria. *J. Eukaryot. Microbiol.* 64, 792–805.
- Pan, H., Stoeck, T., 2017. Redescription of the halophile ciliate, *Blepharisma halophilum* Ruinen, 1938 (Ciliophora, Heterotrichea,

- Heterotrichida) shows that the genus *Blepharisma* is non-monophyletic. *Eur. J. Protistol.* 61, 20–28.
- Pedregosa, F., Varoquaux, G., Gramfort, A., Michel, V., Thirion, B., Grisel, O., Blondel, M., Prettenhofer, P., Weiss, R., Dubourg, V., Vanderplas, J., Passos, A., Cournapeau, D., Brucher, M., Perrot, M., Duchesnay, É., 2011. Scikit-learn: machine learning in Python. *J. Mach. Learn. Res.* 12, 2825–2830.
- Petroni, G., Dini, F., Verni, F., Rosati, G., 2002. A molecular approach to the tangled intrageneric relationships underlying phylogeny in *Euplotes* (Ciliophora, Spirotrichea). *Mol. Phylogenet. Evol.* 22, 118–130.
- Petz, W., Foissner, W., Adam, H., 1985. Culture, food selection and growth rate in the mycophagous ciliate *Grossglockneria acuta* Foissner, 1980: first evidence of autochthonous soil ciliates. *Soil Biol. Biochem.* 17, 871–875.
- Petz, W., Foissner, W., Wirnsberger, E., Krautgartner, W.D., Adam, H., 1986. Mycophagy, a new feeding strategy in autochthonous soil ciliates. *Naturwissenschaften* 73, 560–561.
- Posada, D., 2008. JModelTest: phylogenetic model averaging. *Mol. Biol. Evol.* 25, 1253–1256.
- Puytorac, P. de, Batisse, A., Bohatier, J., Corliss, J.O., Deroux, G., Didier, P., Dragesco, J., Fryd-Versavel, G., Grain, J., Grolière, C., Hovasse, R., Iftode, F., Laval, M., Roque, M., Savoie, A., Tuffrau, M., 1974. Proposition d'une classification du phylum Ciliophora Doflein, 1901 (réunion de systématique, Clermont-Ferrand). *C. R. Hebd. Séanc. Acad. Sci. Paris* 278, 2799–2802.
- Puytorac, P. de, Perez-Paniagua, F., Perez-Silva, J., 1979. A propos d'observations sur la stomatogenèse et l'ultrastructure du cilié *Woodruffia metabolica* (Johnson et Larson, 1938). *Protistologica* 15, 231–243.
- Quintela-Alonso, P., Nitsche, F., Arndt, H., 2011. Molecular characterization and revised systematics of *Microdiaphanosoma arcuatum* (Ciliophora, Colpodea). *J. Eukaryot. Microbiol.* 58, 114–119.
- Rajter, L., Vďáčný, P., 2018. Selection and paucity of phylogenetic signal challenge the utility of alpha-tubulin in reconstruction of evolutionary history of free-living litostomateans (Protista, Ciliophora). *Mol. Phylogenet. Evol.* 127, 534–544.
- Rataj, M., Vďáčný, P., 2018. Dawn of astome ciliates in light of morphology and time-calibrated phylogeny of *Haptophrya planarium*, an obligate endosymbiont of freshwater turbellarians. *Eur. J. Protistol.* 64, 54–71.
- Ronquist, F., Teslenko, M., van der Mark, P., Ayres, D.L., Darling, A., Höhna, S., Larget, B., Liu, L., Suchard, M.A., Huelsenbeck, J.P., 2012. MrBayes 3.2: efficient Bayesian phylogenetic inference and model choice across a large model space. *Syst. Biol.* 61, 539–542.
- Sela, I., Ashkenazy, H., Katoh, K., Pupko, T., 2015. GUIDANCE2: accurate detection of unreliable alignment regions accounting for the uncertainty of multiple parameters. *Nucleic Acids Res.* 43, W7–W14.
- Shao, C., Lv, Z., Pan, Y., Al-Rasheid, K.A., Yi, Z., 2014. Morphology and phylogenetic analysis of two oxytrichid soil ciliates from China, *Oxytricha paragranelifera* n. sp. and *Oxytricha granulifera* Foissner and Adam, 1983 (Protista, Ciliophora, Hypotrichia). *Int. J. Syst. Evol. Microbiol.* 64, 3016–3027.
- Shimodaira, H., Hasegawa, M., 2001. Consel: for assessing the confidence of phylogenetic tree selection. *Bioinformatics* 17, 1246–1247.
- Small, E.B., Lynn, D.H., 1981. A new macrosystem for the phylum Ciliophora Doflein, 1901. *BioSystems* 14, 387–401.
- Stuessy, T.F., Hörandl, E., 2014. Evolutionary systematics and paraphyly: introduction. *Ann. Mo. Bot. Gard.* 100, 2–5.
- Sun, P., Clamp, J., Xu, D., Kusuoka, Y., Miao, W., 2012. *Vorticella* Linnaeus, 1767 (Ciliophora, Oligohymenophora, Peritrichia) is a grade not a clade: redefinition of *Vorticella* and the families Vorticellidae and Astylozoidae using molecular characters derived from the gene coding for small subunit ribosomal RNA. *Protist* 163, 129–142.
- Sun, P., Clamp, J.C., Xu, D., Huang, B., Shin, M.K., Turner, F., 2013. An ITS-based phylogenetic framework for the genus *Vorticella*: finding the molecular and morphological gaps in a taxonomically difficult group. *Proc. R. Soc. B* 280, 20131177.
- Sun, P., Clamp, J., Xu, D., Huang, B., Shin, M.K., 2016. An integrative approach to phylogeny reveals patterns of environmental distribution and novel evolutionary relationships in a major group of ciliates. *Sci. Rep.* 6, 21695.
- Swofford, D.L., 2003. PAUP*. Phylogenetic Analysis Using Parsimony (*and Other Methods). Ver. 4. Sinauer Associates, Sunderland, MA.
- Tamura, K., Kumar, S., 2002. Evolutionary distance estimation under heterogeneous substitution pattern among lineages. *Mol. Biol. Evol.* 19, 1727–1736.
- Tamura, K., Nei, M., Kumar, S., 2004. Prospects for inferring very large phylogenies by using the neighbor-joining method. *Proc. Natl. Acad. Sci. U. S. A.* 101, 11030–11035.
- Vďáčný, P., 2017. Integrative taxonomy of ciliates: assessment of molecular phylogenetic content and morphological homology testing. *Eur. J. Protistol.* 61, 388–398.
- Vďáčný, P., Rajter, L., 2015. Reconciling morphological and molecular classification of predatory ciliates: evolutionary taxonomy of dileptids (Ciliophora, Litostomatea, Rhynchostomatia). *Mol. Phylogenet. Evol.* 90, 112–128.
- Vďáčný, P., Breiner, H.-W., Yashchenko, V., Dunthorn, M., Stoeck, T., Foissner, W., 2014. The chaos prevails: molecular phylogeny of the Haptoria (Ciliophora, Litostomatea). *Protist* 165, 93–111.
- Vďáčný, P., Rajter, L., Stoeck, T., Foissner, W., 2018. A proposed timescale for the evolution of amorphorean ciliates: clevelandellids diversify more rapidly than metopids. *J. Eukaryot. Microbiol.*, <http://dx.doi.org/10.1111/jeu.12641>, in press.
- Wägele, J.-W., 2005. *Foundations of Phylogenetic Systematics*, 2nd ed. Verlag Dr. Friedrich Pfeil, München.
- Wägele, J.-W., Mayer, C., 2007. Visualizing differences in phylogenetic information content of alignments and distinction of three classes of long-branch effects. *BMC Evol. Biol.* 7, 147.
- Wägele, J.W., Rödding, F., 1998. A priori estimation of phylogenetic information conserved in aligned sequences. *Mol. Phylogenet. Evol.* 9, 358–365.
- Wiley, E.O., Lieberman, B.S., 2011. *Phylogenetics: Theory and Practice of Phylogenetic Systematics*, 2nd ed. Wiley-Blackwell Hoboken, New Jersey.
- Wiley, E.O., Siegel-Causey, D., Brooks, D.R., Funk, V.A., 1991. *The Compleat Cladist. A Primer of Phylogenetic Procedures*. The University of Kansas, Museum of Natural History, Lawrence.
- Zhao, Y., Yi, Z., Warren, A., Song, W.B., 2018. Species delimitation for the molecular taxonomy and ecology of the widely distributed microbial eukaryote genus *Euplotes* (Alveolata, Ciliophora). *Proc. R. Soc. B* 285, 20172159.

Appendix A. Supplementary data

Re-analysis of the 18S rRNA gene phylogeny of the ciliate class Colpodea

Peter Vd'ačný^{a,*}, Wilhelm Foissner^b

^a*Department of Zoology, Faculty of Natural Sciences, Comenius University in Bratislava,
Ilkovičova 6, Mlynská dolina B-1, 842 15 Bratislava, Slovak Republic*

^b*Department of Biosciences, Faculty of Natural Sciences, Paris Lodron University of Salzburg,
Hellbrunnerstrasse 34, 5020 Salzburg, Austria*

Pages 7

Tables 3

Figures 3

*Corresponding author. Tel.: +421 2 602 96 170; fax: +421 2 602 96 333.

E-mail address: peter.vdacny@uniba.sk (Peter Vd'ačný).

Supplementary Table S1. Best fitting evolutionary models for the six datasets analyzed.

| Dataset | Model | A | C | G | T | [AC] | [AG] | [AT] | [CG] | [CT] | [GT] | p-inv | Γ |
|----------|-----------------|--------|--------|--------|--------|--------|--------|--------|--------|--------|-------|--------|----------|
| Unmasked | GTR+I+ Γ | 0.2731 | 0.1978 | 0.2577 | 0.2715 | 0.8873 | 2.7747 | 1.2032 | 0.6912 | 5.2668 | 1.000 | 0.4450 | 0.4160 |
| 0.50 | GTR+I+ Γ | 0.2741 | 0.1952 | 0.2574 | 0.2733 | 0.8496 | 2.7317 | 1.1996 | 0.6040 | 5.2186 | 1.000 | 0.4540 | 0.4260 |
| 0.75 | GTR+I+ Γ | 0.2772 | 0.1926 | 0.2582 | 0.2720 | 0.9890 | 2.9675 | 1.3107 | 0.7042 | 6.0639 | 1.000 | 0.4770 | 0.4190 |
| 0.80 | GTR+I+ Γ | 0.2784 | 0.1898 | 0.2543 | 0.2774 | 1.0088 | 3.0500 | 1.2763 | 0.7187 | 5.8083 | 1.000 | 0.4810 | 0.4180 |
| 0.90 | GTR+I+ Γ | 0.2794 | 0.1881 | 0.2557 | 0.2767 | 1.0723 | 3.2632 | 1.3802 | 0.8278 | 6.1321 | 1.000 | 0.4940 | 0.4280 |
| 0.93 | GTR+I+ Γ | 0.2797 | 0.1897 | 0.2525 | 0.2782 | 1.0657 | 3.4295 | 1.3845 | 0.8039 | 5.9589 | 1.000 | 0.5030 | 0.4300 |

A, C, G, T = base frequencies; [AC], [AG], [AT], [CG], [CT], [GT] = rate substitution matrices; p-inv = proportion of invariable sites; Γ = gamma distribution shape parameter.

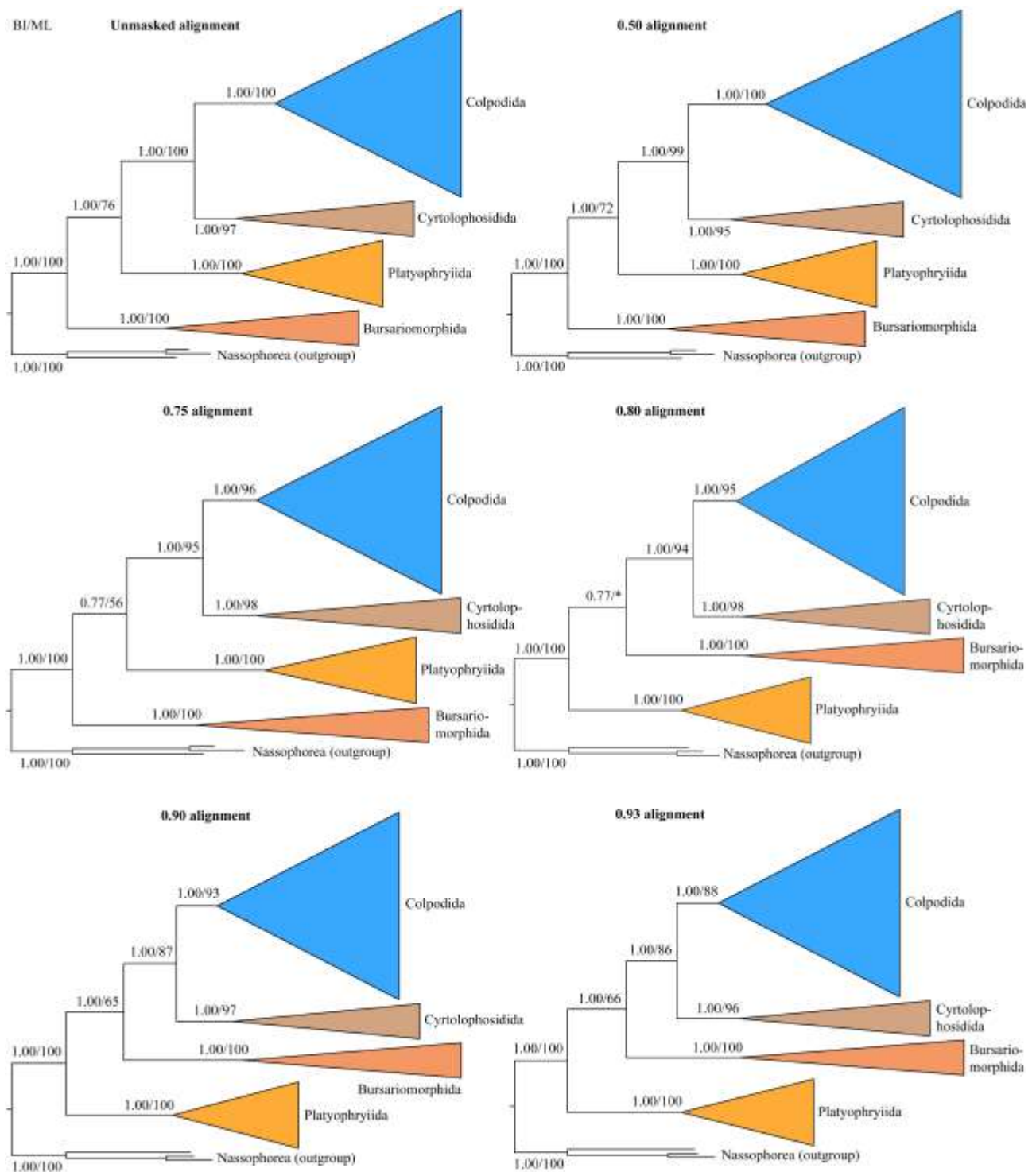
Supplementary Table S2. Distribution of oral ciliature characters in the colpodean taxa analyzed with the computer program SIMMAP.

| Taxon | Right oral ciliature | Left oral ciliature | Taxon | Right oral ciliature | Left oral ciliature |
|--------------------------------------|----------------------|---------------------|--------------------------------------|----------------------|---------------------|
| Bursariomorphida | | | Colpodida – Grossglockneriina | | |
| <i>Bryometopus atypicus</i> | Dikinetal | Brick-shaped AOs | <i>Mykophagophrys terricola</i> | Monokinetal | Reduced |
| <i>Bryometopus pseudochilodon</i> | Dikinetal | Brick-shaped AOs | <i>Pseudoplatyophrya nana</i> | Monokinetal | Reduced |
| <i>Bryometopus sphagni</i> | Dikinetal | Brick-shaped AOs | Colpodida – Colpodina | | |
| <i>Bryometopus triquetrus</i> | Dikinetal | Brick-shaped AOs | <i>Bardeliella pulchra</i> | Polykinetal | Complex |
| <i>Bursaria ovata</i> | Polykinetal | Brick-shaped AOs | <i>Bresslaua vorax</i> | Polykinetal | Ciliary field |
| <i>Bursaria truncatella</i> | Polykinetal | Brick-shaped AOs | <i>Bresslauides discoideus</i> | Polykinetal | Ciliary field |
| <i>Bursaria</i> spp. | Polykinetal | Brick-shaped AOs | <i>Bromeliothrix metopoides</i> | Polykinetal | Ciliary field |
| Platyophryida | | | <i>Colpoda aspera</i> | Polykinetal | Ciliary field |
| <i>Apowoodruffia salinaria</i> | Dikinetal | Brick-shaped AOs | <i>Colpoda cucullus</i> | Polykinetal | Ciliary field |
| <i>Etoschophrya inornata</i> | Dikinetal | Brick-shaped AOs | <i>Colpoda ecaudata</i> | Polykinetal | Ciliary field |
| <i>Kuklikophrya ougandae</i> | Dikinetal | Brick-shaped AOs | <i>Colpoda elliotti</i> | Polykinetal | Ciliary field |
| <i>Ottowphyra dragescoi</i> | Dikinetal | Brick-shaped AOs | <i>Colpoda henneguyi</i> | Polykinetal | Ciliary field |
| <i>Platyophrya bromelicola</i> | Dikinetal | Brick-shaped AOs | <i>Colpoda inflata</i> | Polykinetal | Ciliary field |
| <i>Platyophrya spumacola</i> | Dikinetal | Brick-shaped AOs | <i>Colpoda lucida</i> | Polykinetal | Ciliary field |
| <i>Platyophrya vorax</i> | Dikinetal | Brick-shaped AOs | <i>Colpoda maupasi</i> | Polykinetal | Ciliary field |
| <i>Platyophryides macrostoma</i> | Dikinetal | Brick-shaped AOs | <i>Exocolpoda augustini</i> | Polykinetal | Ciliary field |
| <i>Platyophryides magnus</i> | Dikinetal | Brick-shaped AOs | <i>Hausmanniella discoidea</i> | Polykinetal | Ciliary field |
| <i>Sagittaria venezuelensis</i> | Dikinetal | Brick-shaped AOs | <i>Ilsiella palustris</i> | Dikinetal | Brick-shaped AOs |
| <i>Sagittariides oblongistoma</i> | Dikinetal | Brick-shaped AOs | <i>Kalometopia duplicata</i> | Polykinetal | Ciliary field |
| <i>Sorogena stoianovitchae</i> | Dikinetal | Brick-shaped AOs | <i>Maryna meridiana</i> | Polykinetal | Ciliary field |
| <i>Woodruffides metabolicus</i> | Dikinetal | Brick-shaped AOs | <i>Maryna ovata</i> | Polykinetal | Ciliary field |
| Cyrtolophosidida | | | <i>Maryna umbrellata</i> | Polykinetal | Ciliary field |
| <i>Apocyrtolophosis minor</i> | Dikinetal | Brick-shaped AOs | <i>Paracolpoda steinii</i> | Polykinetal | Ciliary field |
| <i>Ariasterostoma marinum</i> | Dikinetal | Brick-shaped AOs | <i>Pseudomaryna</i> sp. | Polykinetal | Ciliary field |
| <i>Ariasterostoma</i> sp. | Dikinetal | Brick-shaped AOs | <i>Repoma cavicola</i> | Polykinetal | Ciliary field |
| <i>Cyrtolophosis mucicola</i> | Dikinetal | Brick-shaped AOs | <i>Sandmanniella terricola</i> | Polykinetal | Complex |
| <i>Microdiaphanosoma arcuatum</i> | Dikinetal | Brick-shaped AOs | <i>Tillina magna</i> | Polykinetal | Ciliary field |
| <i>Pseudocyrtolophosis alpestris</i> | Dikinetal | Brick-shaped AOs | <i>Tillina minima</i> | Polykinetal | Ciliary field |
| Colpodida – Bryophryina | | | <i>Tillina</i> sp. | Polykinetal | Ciliary field |
| <i>Bryophrya gemmea</i> | Polykinetal | Complex | Outgroup | | |
| <i>Bryophryoides ocellatus</i> | Polykinetal | Complex | <i>Furgasonia blochmanni</i> | Dikinetal | Brick-shaped AOs |
| <i>Jaroschia sumptuosa</i> | Polykinetal | Complex | <i>Nassula labiata</i> | Dikinetal | Brick-shaped AOs |
| <i>Notoxoma parabryophryides</i> | Polykinetal | Reduced | <i>Obertrumia georgiana</i> | Dikinetal | Brick-shaped AOs |

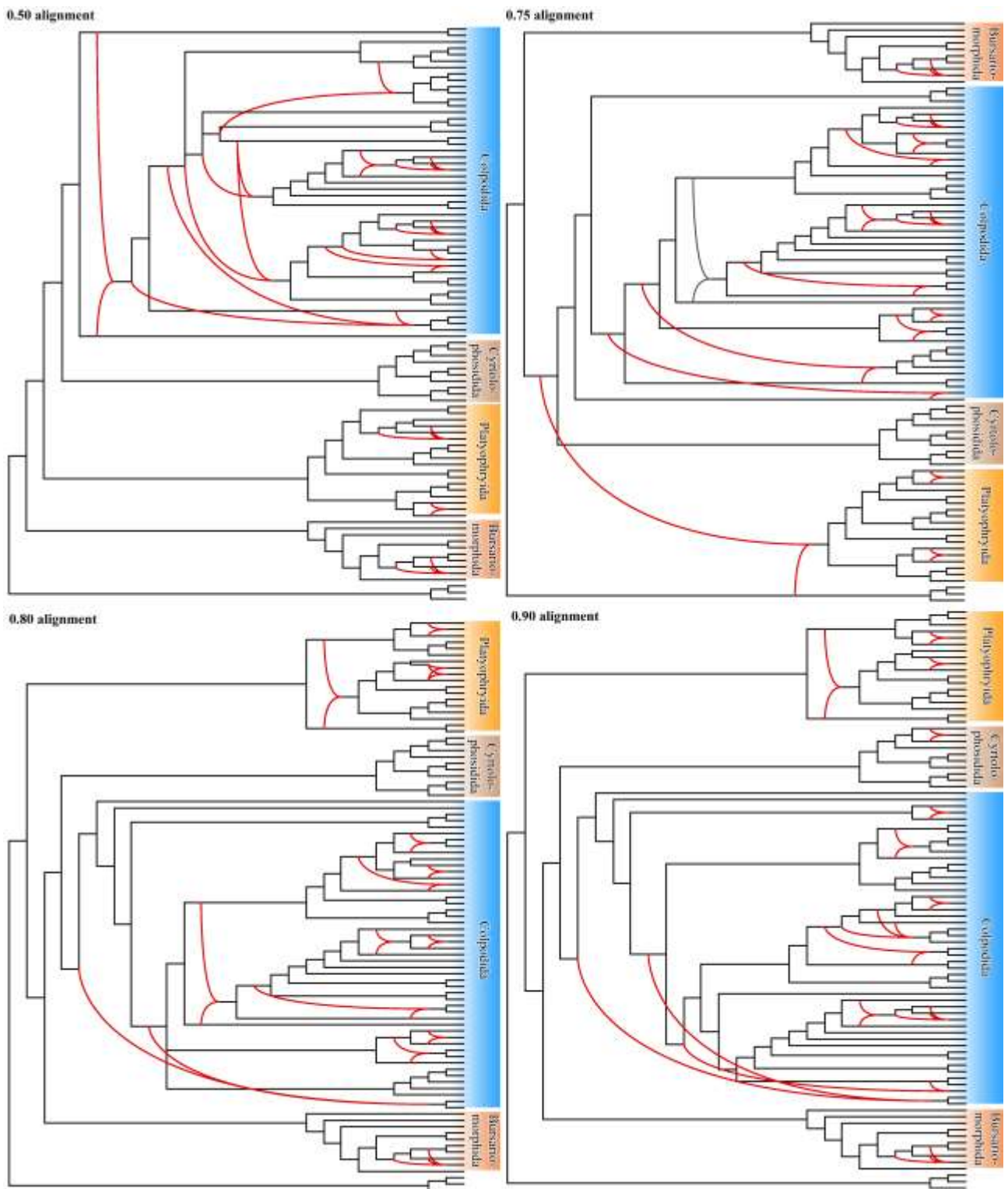
^a AOs = adoral organelles.

Supplementary Table S3. Average pairwise genetic distances (below diagonal) of colpodid taxa and their standard errors (above diagonal) calculated from the unmasked 18S rRNA gene alignment under the heterogenous substitution pattern among lineages.

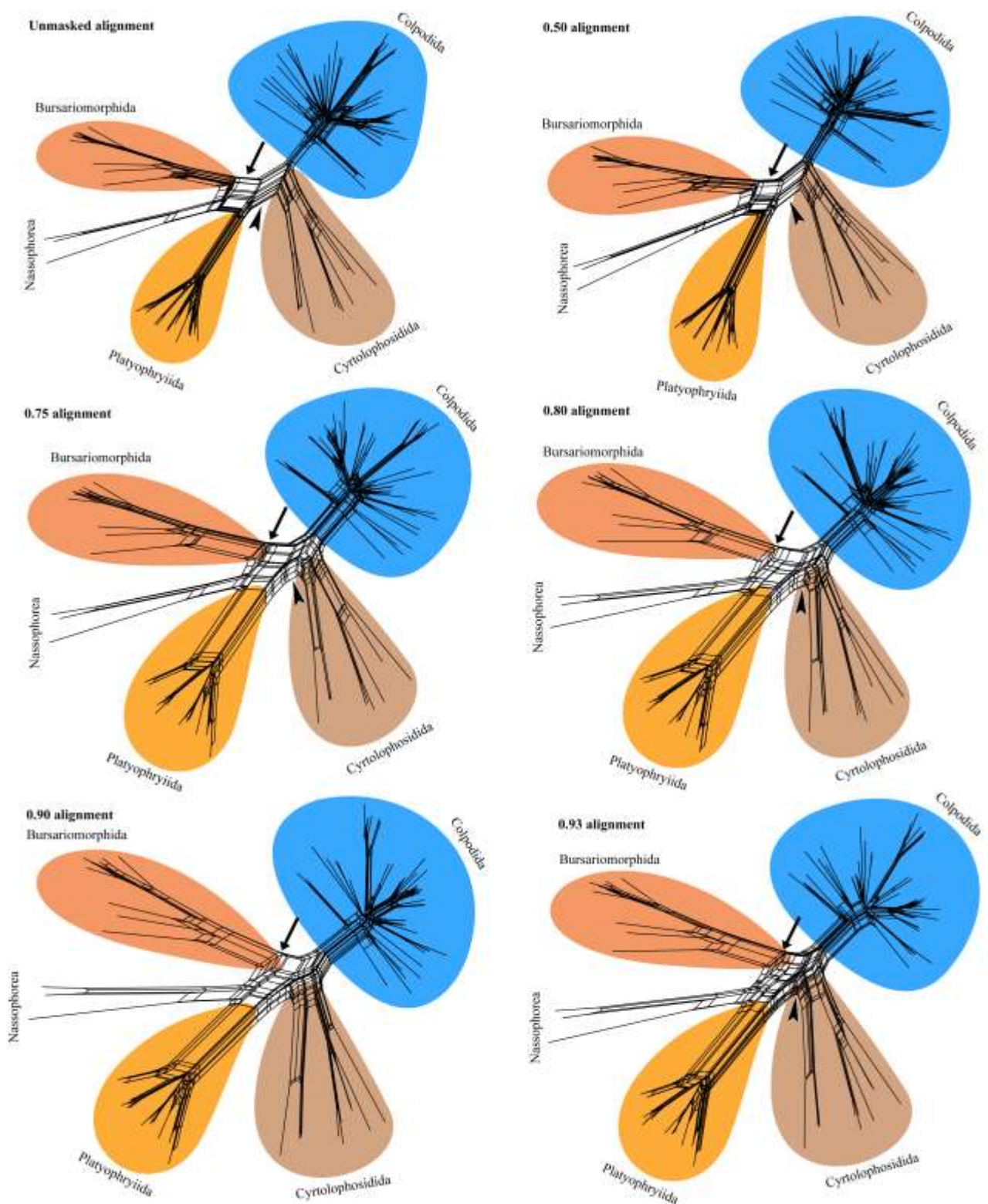
| Taxon | 1 | 2 | 3 | 4 | 5 | 6 | 7 | 8 | 9 | 10 | 11 | 12 | 13 | 14 | 15 | 16 | 17 | 18 | 19 | 20 | 21 | 22 | 23 | 24 | 25 | 26 | 27 | 28 | 29 | 30 | 31 | 32 | 33 | 34 | 35 | 36 | 37 | 38 | 39 | 40 | 41 | 42 | 43 | 44 | 45 | 46 | 47 | 48 | 49 | | |
|--|----|-------|-------|-------|-------|-------|-------|-------|-------|-------|-------|-------|-------|-------|-------|-------|-------|-------|-------|-------|-------|-------|-------|-------|-------|-------|-------|-------|-------|-------|-------|-------|-------|-------|-------|-------|-------|-------|-------|-------|-------|-------|-------|-------|-------|-------|-------|-------|-------|-------|-------|
| <i>Bryophryoides ocellatus</i> KF569684 | 1 | | 0.004 | 0.006 | 0.006 | 0.006 | 0.007 | 0.006 | 0.007 | 0.006 | 0.006 | 0.006 | 0.006 | 0.006 | 0.006 | 0.005 | 0.005 | 0.005 | 0.007 | 0.006 | 0.006 | 0.005 | 0.005 | 0.005 | 0.005 | 0.006 | 0.007 | 0.007 | 0.007 | 0.005 | 0.006 | 0.007 | 0.006 | 0.005 | 0.006 | 0.005 | 0.006 | 0.006 | 0.006 | 0.006 | 0.008 | 0.008 | 0.007 | 0.007 | 0.007 | 0.007 | 0.007 | 0.007 | 0.007 | 0.008 | 0.008 |
| <i>Bryophrya gemmea</i> HQ337901 | 2 | 0.025 | | 0.005 | 0.006 | 0.006 | 0.007 | 0.006 | 0.006 | 0.006 | 0.006 | 0.006 | 0.005 | 0.006 | 0.006 | 0.006 | 0.006 | 0.006 | 0.006 | 0.006 | 0.005 | 0.005 | 0.005 | 0.005 | 0.006 | 0.006 | 0.006 | 0.006 | 0.005 | 0.005 | 0.007 | 0.006 | 0.006 | 0.006 | 0.006 | 0.006 | 0.007 | 0.006 | 0.007 | 0.007 | 0.007 | 0.007 | 0.007 | 0.007 | 0.007 | 0.007 | 0.007 | 0.007 | 0.007 | 0.007 | 0.008 |
| <i>Kalometopia duplicata</i> KJ873050 | 3 | 0.047 | 0.043 | | 0.005 | 0.005 | 0.005 | 0.005 | 0.005 | 0.004 | 0.004 | 0.004 | 0.004 | 0.004 | 0.005 | 0.005 | 0.005 | 0.004 | 0.004 | 0.005 | 0.004 | 0.004 | 0.005 | 0.004 | 0.006 | 0.005 | 0.005 | 0.005 | 0.005 | 0.006 | 0.006 | 0.005 | 0.006 | 0.005 | 0.006 | 0.005 | 0.006 | 0.005 | 0.006 | 0.005 | 0.006 | 0.005 | 0.006 | 0.005 | 0.006 | 0.005 | 0.006 | 0.005 | 0.006 | 0.005 | 0.006 |
| <i>Bresslauides discoideus</i> EU039885 | 4 | 0.050 | 0.046 | 0.031 | | 0.001 | 0.003 | 0.003 | 0.004 | 0.004 | 0.004 | 0.004 | 0.004 | 0.004 | 0.004 | 0.004 | 0.004 | 0.004 | 0.004 | 0.005 | 0.005 | 0.005 | 0.005 | 0.005 | 0.006 | 0.005 | 0.006 | 0.005 | 0.006 | 0.006 | 0.005 | 0.006 | 0.005 | 0.006 | 0.005 | 0.006 | 0.005 | 0.006 | 0.005 | 0.006 | 0.005 | 0.006 | 0.005 | 0.006 | 0.005 | 0.006 | 0.005 | 0.006 | 0.005 | 0.006 | |
| <i>Bresslauides discoideus</i> HM140394 | 5 | 0.049 | 0.044 | 0.030 | 0.001 | | 0.004 | 0.003 | 0.004 | 0.003 | 0.004 | 0.004 | 0.004 | 0.004 | 0.004 | 0.004 | 0.004 | 0.003 | 0.004 | 0.004 | 0.004 | 0.005 | 0.005 | 0.005 | 0.005 | 0.005 | 0.005 | 0.006 | 0.005 | 0.006 | 0.005 | 0.006 | 0.005 | 0.006 | 0.005 | 0.006 | 0.005 | 0.006 | 0.005 | 0.006 | 0.005 | 0.006 | 0.005 | 0.006 | 0.005 | 0.006 | 0.005 | 0.006 | 0.005 | 0.006 | |
| <i>Colpoda henneguyi</i> EU039894 | 6 | 0.065 | 0.058 | 0.039 | 0.019 | 0.022 | | 0.004 | 0.005 | 0.004 | 0.004 | 0.005 | 0.005 | 0.004 | 0.005 | 0.005 | 0.005 | 0.005 | 0.005 | 0.006 | 0.006 | 0.006 | 0.005 | 0.006 | 0.006 | 0.007 | 0.006 | 0.006 | 0.006 | 0.007 | 0.007 | 0.007 | 0.007 | 0.007 | 0.007 | 0.007 | 0.007 | 0.007 | 0.007 | 0.007 | 0.007 | 0.007 | 0.007 | 0.007 | 0.007 | 0.007 | 0.007 | 0.007 | 0.007 | 0.007 | |
| <i>Bresslaia vorax</i> AF060453 | 7 | 0.057 | 0.052 | 0.035 | 0.018 | 0.017 | 0.026 | | 0.004 | 0.003 | 0.004 | 0.004 | 0.004 | 0.004 | 0.004 | 0.004 | 0.004 | 0.004 | 0.005 | 0.005 | 0.005 | 0.005 | 0.005 | 0.006 | 0.006 | 0.006 | 0.006 | 0.006 | 0.006 | 0.007 | 0.007 | 0.007 | 0.007 | 0.007 | 0.007 | 0.007 | 0.007 | 0.007 | 0.007 | 0.007 | 0.007 | 0.007 | 0.007 | 0.007 | 0.007 | 0.007 | 0.007 | 0.007 | 0.007 | 0.007 | |
| <i>Colpoda cucullus</i> AB918716 | 8 | 0.056 | 0.053 | 0.031 | 0.026 | 0.026 | 0.032 | 0.027 | | 0.002 | 0.002 | 0.002 | 0.003 | 0.002 | 0.003 | 0.005 | 0.004 | 0.005 | 0.004 | 0.005 | 0.005 | 0.005 | 0.005 | 0.005 | 0.005 | 0.007 | 0.006 | 0.006 | 0.006 | 0.006 | 0.006 | 0.006 | 0.006 | 0.006 | 0.006 | 0.006 | 0.006 | 0.006 | 0.006 | 0.006 | 0.006 | 0.006 | 0.006 | 0.006 | 0.006 | 0.006 | 0.006 | 0.006 | 0.006 | 0.006 | 0.006 |
| <i>Colpoda lucida</i> KJ873048 | 9 | 0.050 | 0.050 | 0.029 | 0.019 | 0.019 | 0.025 | 0.018 | 0.008 | | 0.001 | 0.003 | 0.003 | 0.003 | 0.003 | 0.004 | 0.004 | 0.004 | 0.003 | 0.005 | 0.005 | 0.005 | 0.004 | 0.005 | 0.004 | 0.006 | 0.005 | 0.005 | 0.006 | 0.006 | 0.006 | 0.006 | 0.006 | 0.006 | 0.006 | 0.006 | 0.006 | 0.006 | 0.006 | 0.006 | 0.006 | 0.006 | 0.006 | 0.006 | 0.006 | 0.006 | 0.006 | 0.006 | 0.006 | 0.006 | |
| <i>Colpoda lucida</i> EU039895 | 10 | 0.054 | 0.054 | 0.029 | 0.022 | 0.021 | 0.028 | 0.021 | 0.008 | 0.003 | | 0.003 | 0.003 | 0.003 | 0.003 | 0.004 | 0.004 | 0.004 | 0.003 | 0.005 | 0.005 | 0.005 | 0.005 | 0.005 | 0.005 | 0.006 | 0.006 | 0.006 | 0.006 | 0.006 | 0.007 | 0.006 | 0.006 | 0.006 | 0.006 | 0.006 | 0.006 | 0.006 | 0.006 | 0.006 | 0.006 | 0.006 | 0.006 | 0.006 | 0.006 | 0.006 | 0.006 | 0.006 | 0.006 | 0.006 | 0.006 |
| <i>Colpoda cucullus</i> EU039893 | 11 | 0.050 | 0.046 | 0.026 | 0.022 | 0.021 | 0.033 | 0.022 | 0.006 | 0.011 | 0.011 | | 0.002 | 0.002 | 0.003 | 0.004 | 0.004 | 0.004 | 0.003 | 0.004 | 0.005 | 0.005 | 0.004 | 0.005 | 0.005 | 0.006 | 0.005 | 0.005 | 0.005 | 0.005 | 0.006 | 0.006 | 0.006 | 0.006 | 0.006 | 0.006 | 0.006 | 0.006 | 0.006 | 0.006 | 0.006 | 0.006 | 0.006 | 0.006 | 0.006 | 0.006 | 0.006 | 0.006 | 0.006 | 0.006 | 0.006 |
| <i>Colpoda inflata</i> KJ607918 | 12 | 0.051 | 0.045 | 0.028 | 0.022 | 0.021 | 0.033 | 0.022 | 0.011 | 0.012 | 0.014 | 0.011 | | 0.002 | 0.000 | 0.004 | 0.004 | 0.004 | 0.003 | 0.005 | 0.005 | 0.004 | 0.005 | 0.005 | 0.006 | 0.006 | 0.006 | 0.006 | 0.005 | 0.006 | 0.006 | 0.006 | 0.006 | 0.006 | 0.006 | 0.006 | 0.006 | 0.006 | 0.006 | 0.006 | 0.006 | 0.006 | 0.006 | 0.006 | 0.006 | 0.006 | 0.006 | 0.006 | 0.006 | 0.006 | 0.006 |
| <i>Colpoda inflata</i> KJ607917 | 13 | 0.051 | 0.044 | 0.028 | 0.019 | 0.018 | 0.027 | 0.020 | 0.010 | 0.011 | 0.013 | 0.008 | 0.007 | | 0.002 | 0.004 | 0.004 | 0.004 | 0.003 | 0.004 | 0.004 | 0.004 | 0.004 | 0.005 | 0.005 | 0.006 | 0.006 | 0.006 | 0.006 | 0.005 | 0.006 | 0.006 | 0.006 | 0.006 | 0.006 | 0.006 | 0.006 | 0.006 | 0.006 | 0.006 | 0.006 | 0.006 | 0.006 | 0.006 | 0.006 | 0.006 | 0.006 | 0.006 | 0.006 | 0.006 | 0.006 |
| <i>Colpoda inflata</i> KM222106 | 14 | 0.052 | 0.045 | 0.030 | 0.023 | 0.023 | 0.035 | 0.023 | 0.011 | 0.013 | 0.015 | 0.011 | 0.000 | 0.007 | | 0.004 | 0.005 | 0.004 | 0.003 | 0.005 | 0.005 | 0.004 | 0.005 | 0.005 | 0.005 | 0.007 | 0.006 | 0.006 | 0.006 | 0.005 | 0.007 | 0.006 | 0.006 | 0.006 | 0.006 | 0.006 | 0.006 | 0.006 | 0.006 | 0.006 | 0.006 | 0.006 | 0.006 | 0.006 | 0.006 | 0.006 | 0.006 | 0.006 | 0.006 | 0.006 | 0.006 |
| <i>Tillina magna</i> EU039896 | 15 | 0.038 | 0.045 | 0.034 | 0.026 | 0.025 | 0.037 | 0.032 | 0.032 | 0.028 | 0.031 | 0.028 | 0.027 | 0.027 | 0.029 | | 0.001 | 0.003 | 0.005 | 0.006 | 0.006 | 0.005 | 0.005 | 0.004 | 0.004 | 0.005 | 0.006 | 0.006 | 0.005 | 0.007 | 0.005 | 0.006 | 0.006 | 0.006 | 0.005 | 0.006 | 0.005 | 0.006 | 0.005 | 0.006 | 0.005 | 0.006 | 0.005 | 0.006 | 0.005 | 0.006 | 0.005 | 0.006 | 0.005 | 0.006 | |
| <i>Tillina minima</i> EU039897 | 16 | 0.036 | 0.046 | 0.034 | 0.026 | 0.025 | 0.034 | 0.032 | 0.028 | 0.027 | 0.030 | 0.025 | 0.027 | 0.026 | 0.028 | 0.002 | | 0.003 | 0.005 | 0.006 | 0.006 | 0.005 | 0.005 | 0.004 | 0.004 | 0.005 | 0.006 | 0.006 | 0.005 | 0.007 | 0.004 | 0.006 | 0.006 | 0.005 | 0.006 | 0.005 | 0.006 | 0.005 | 0.006 | 0.005 | 0.006 | 0.005 | 0.006 | 0.005 | 0.006 | 0.005 | 0.006 | 0.005 | 0.006 | 0.005 | 0.006 |
| <i>Tillina</i> sp. JF747216 | 17 | 0.040 | 0.042 | 0.031 | 0.018 | 0.017 | 0.030 | 0.026 | 0.027 | 0.021 | 0.023 | 0.022 | 0.022 | 0.023 | 0.020 | 0.020 | | 0.004 | 0.005 | 0.005 | 0.004 | 0.004 | 0.004 | 0.004 | 0.005 | 0.006 | 0.006 | 0.006 | 0.005 | 0.006 | 0.006 | 0.005 | 0.006 | 0.005 | 0.006 | 0.005 | 0.006 | 0.005 | 0.006 | 0.005 | 0.006 | 0.005 | 0.006 | 0.005 | 0.006 | 0.005 | 0.006 | 0.005 | 0.006 | 0.005 | 0.006 |
| <i>Colpoda inflata</i> M97908 | 18 | 0.060 | 0.051 | 0.030 | 0.025 | 0.025 | 0.038 | 0.025 | 0.018 | 0.017 | 0.017 | 0.014 | 0.012 | 0.013 | 0.012 | 0.035 | 0.035 | 0.028 | | 0.005 | 0.005 | 0.005 | 0.005 | 0.006 | 0.006 | 0.006 | 0.006 | 0.006 | 0.006 | 0.007 | 0.007 | 0.007 | 0.006 | 0.006 | 0.006 | 0.006 | 0.006 | 0.007 | 0.006 | 0.006 | 0.006 | 0.006 | 0.006 | 0.006 | 0.006 | 0.006 | 0.006 | 0.006 | 0.006 | 0.006 | 0.006 |
| <i>Mykophagophrys terricola</i> EU039902 | 19 | 0.047 | 0.042 | 0.029 | 0.029 | 0.028 | 0.042 | 0.038 | 0.032 | 0.032 | 0.030 | 0.032 | 0.031 | 0.034 | 0.038 | 0.036 | 0.034 | 0.036 | | 0.003 | 0.004 | 0.004 | 0.005 | 0.005 | 0.006 | 0.005 | 0.005 | 0.005 | 0.005 | 0.006 | 0.006 | 0.006 | 0.005 | 0.006 | 0.005 | 0.006 | 0.005 | 0.006 | 0.005 | 0.006 | 0.005 | 0.006 | 0.005 | 0.006 | 0.005 | 0.006 | 0.005 | 0.006 | 0.005 | 0.006 | |
| <i>Pseudoplatyophrya nana</i> AF060452 | 20 | 0.045 | 0.041 | 0.030 | 0.031 | 0.029 | 0.046 | 0.034 | 0.034 | 0.032 | 0.031 | 0.035 | 0.031 | 0.037 | 0.039 | 0.040 | 0.033 | 0.036 | 0.014 | | 0.004 | 0.004 | 0.005 | 0.004 | 0.006 | 0.005 | 0.005 | 0.005 | 0.005 | 0.006 | 0.006 | 0.005 | 0.006 | 0.005 | 0.006 | 0.005 | 0.006 | 0.005 | 0.006 | 0.005 | 0.006 | 0.005 | 0.006 | 0.005 | 0.006 | 0.005 | 0.006 | 0.005 | 0.006 | | |
| <i>Exocolpoda augustini</i> JF747214 | 21 | 0.038 | 0.036 | 0.031 | 0.033 | 0.032 | 0.046 | 0.037 | 0.035 | 0.032 | 0.035 | 0.033 | 0.029 | 0.030 | 0.030 | 0.033 | 0.034 | 0.026 | 0.034 | 0.029 | 0.025 | | 0.002 | 0.004 | 0.004 | 0.005 | 0.005 | 0.005 | 0.005 | 0.005 | 0.006 | 0.005 | 0.006 | 0.005 | 0.006 | 0.005 | 0.006 | 0.005 | 0.006 | 0.005 | 0.006 | 0.005 | 0.006 | 0.005 | 0.006 | 0.005 | 0.006 | 0.005 | 0.006 | 0.005 | 0.006 |
| <i>Exocolpoda augustini</i> KJ607919 | 22 | 0.037 | 0.035 | 0.028 | 0.031 | 0.031 | 0.041 | 0.037 | 0.029 | 0.030 | 0.033 | 0.030 | 0.029 | 0.028 | 0.031 | 0.033 | 0.025 | 0.036 | 0.026 | 0.025 | 0.007 | 0.004 | | 0.004 | 0.005 | 0.005 | 0.005 | 0.005 | 0.005 | 0.005 | 0.005 | 0.005 | 0.005 | 0.005 | 0.005 | 0.005 | 0.005 | 0.005 | 0.005 | 0.005 | 0.005 | 0.005 | 0.005 | 0.005 | 0.005 | 0.005 | 0.005 | 0.005 | 0.005 | 0.005 | 0.005 |
| <i>Colpoda ecaudata</i> KJ873046 | 23 | 0.037 | 0.040 | 0.031 | 0.036 | 0.035 | 0.047 | 0.038 | 0.038 | 0.035 | 0.038 | 0.037 | 0.036 | 0.037 | 0.038 | 0.030 | 0.044 | 0.035 | 0.032 | 0.024 | 0.022 | 0.001 | | 0.005 | 0.005 | 0. | | | | | | | | | | | | | | | | | | | | | | | | | |



Supplementary Fig. S1. Comparison of phylogenies of colpodean ciliates based on the 18S rRNA gene inferred from the unmasked, 0.50, 0.75, 0.80, 0.90 and 0.93 alignments. Trees were constructed under the respective GTR + I + Γ substitution evolutionary models selected by jModelTest (Supplementary Table S1). Only relationships between main colpodean lineages were shown. Posterior probabilities for Bayesian Inference (BI) and bootstrap values for Maximum Likelihood (ML) were mapped onto the 50%-majority rule Bayesian consensus trees. Note that the phylogenetic position of the orders Bursariomorphida and Platyophryiida was usually statistically strongly supported but conflicts between the alignments analyzed. The order Bursariomorphida branched off first in the unmasked, 0.50 and 0.75 alignments, while the order Platyophryiida in the 0.80–0.93 alignments. On the other hand, the orders Colpodida and Cyrtolophosidida were consistently classified as sister groups.



Supplementary Fig. S2. Softwired galled networks constructed from a set of thousand randomly selected trees obtained during the stationary phase of the Bayesian MCMC analyses of the 0.50, 0.75, 0.80 and 0.90 alignments. A threshold of 20% was set as a minimum fraction of trees that must contain a cluster for that cluster to be included in the network. Alternative evolutionary trajectories, i.e., edges leading into reticulate nodes, were marked by curved red lines. Most of the conflicts were on the base of the order Colpodida and included the phylogenetic position of *Bardeliella*, *Ilsiella*, *Sandmanniella*, bryophryids and grossglockneriids. The order Bursariomorpha branched off first in the 0.50 alignment, while the order Platysophryida in the 0.80 and 0.90 alignments. The position of bursariomorphids and platyophryids was conflicting in the 0.75 alignment.



Supplementary Fig. S3. Phylogenetic networks constructed from six alignments. With the strength of alignment masking, networks lose the tree-like structure becoming star-like in the central part due to the loss of phylogenetic signals. The set of splits uniting the orders Colpodida and Cyrtolophosidida (arrowheads) became shorter and more weakly statistically supported along with the strength of alignment masking. Likewise, the set of splits separating the order Bursariomorphida from the rest of colpodeans (arrows) became weaker in more strongly masked alignments. Note that there were no splits separating the order Platyophryiida from the rest of colpodeans, although this relationship was shown with strong statistical support in phylogenetic trees (see Supplementary Fig. S1).