



HAIBER digiShield 3

0054 X1800

18mm 1:2.8

Camera Accessories

„Discover the Possibilities“

Basically today's cameras do the same as always: they shoot pictures. But there is a radical change in the way they do it and in the possibilities to use small tools to provide a technically perfect image tailored to the photographer's requirements. Image stabilization, face detection and „smile shutter“ mode are only the tip of the iceberg of built-in helpers. But nevertheless there

is still plenty of room for reasonable accessories: for the LCD screen, for the lens, for the shutter release. Tripods, ball heads, shoulder straps and filters are equally useful. Accessories expand the possibilities of your camera and are sometimes indispensable in certain situations or to achieve desired results.

Here is a short survey:

- LCD accessories see page 145



- Lens accessories see page 150



- Shutter releases see page 156



- Shoulder and wrist straps and more carrying accessories see page 160



- Bags see page 164



- Tripods, heads, levels etc. see page 166



- Flash accessories see page 176



- More accessories see page 183



- Video transfer see page 186



6084
SL3 LCD Viewfinder

Screen attachment shaped like a light shield with a built-in loupe for DSLRs and CSCs with 3" LCD. Allows for perfect framing and focus control when shooting and trouble-free image review under any ambient light condition. Loupe with 2.3x magnification, lens with coating on each side and eyesight adjustment via large knurled wheel. Extensive, highly flexible eye cup.

Attaches on a self-adhesive holding frame on which the viewfinder clicks into place. Eye cup can be adjusted for left or right eye viewing.

Outside dimensions (w/o eye cup, WxHxD):
75 x 63 x 85 mm (3 x 2.5 x 3.3 in.)

Weight: approx. 105 g (3.7 oz.)





6054/74
„digiShield²“
LCD Screen Glare Shield

For digital compacts with LCD up to 2.7”*.

Shields lateral and angular incidence of light from the LCD monitor and improves the visibility of the monitor image.

Coil spring supported side flaps will keep the glare shield in opened position.

Folds down completely and serves also as a cover and a screen protector.

Fits many digital compact cameras. The shield is attached to the tripod socket using a suitable adapter plate. Regardless of the position of the tripod socket on the camera the glare shield can be attached so that it is positioned properly on the monitor and fits tightly to the camera body. It can be moved sideways and adjusted in height.

Includes three adapter plates, flat mounting screw and tripod adapter screw to use the camera together with the glare shield on a tripod.

6054: black

6074: silver

* Eventually minor border covering with 2.7"



6055/75
„digiShield³“
LCD Screen Glare Shield

For digital compacts with 3.0" LCD screen.

Shields lateral and angular incidence of light from the LCD monitor and improves the visibility of the monitor image on digital cameras.

Folds down completely and serves also as a cover and a screen protector. Coil spring supported side flaps will keep the glare shield in opened position.

To ease the operation of a touch screen monitor the complete glare shield flips up by releasing a lock rail, no matter if it is open or folded down.

The shield is attached to the tripod socket with a screw with thin head or an adapter screw, that has an additional tripod thread. Regardless of the position of the tripod socket on the camera the glare shield can be attached so that it is positioned properly on the monitor and fits tightly to the camera body.

Supplied with 3 different adapter plates, two different thin screws and an adapter screw with tripod thread.

6055: black

6075: silver





6076/78 LCD Screen Protective Film

For use with digital cameras, mobile phones and PDAs. Protects the screen from scratches, dirt and fingerprints. Suitable for touch-screens. Can be removed without residues.

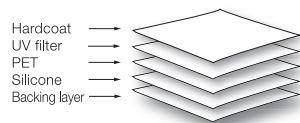
6076: Set with three 4 x 3" (10 x 8 cm) sheets, each, with cutting lines for required size. Comes with cleaning cloths and a squeegee card to apply the film.

6078: For 3" LCD screens. Can be cut to fit smaller screens. Rounded corners. 3 pieces.



6079-82/6093-94 „Crystal Clear“ LCD Screen Protecting Film

Layer composition



High-quality film for use on LCD screen of digital cameras. Protects from scratches, dirt and fingerprints. Almost invisible.

Hard coated PET film with UV protection, scratch resistant. Optimized for touch-screens. Attaches by adhesion due to silicone coating and can be removed without residues. Easy to apply, no bubbling. 1 piece.

6079: for 2.7" screens

6080: for 3.0" screens

6081: for 3.5" screens

6082: for 4.0" screens

16:9 aspect ratio

6093: for 3.0" screens

6094: for 3.5" screens

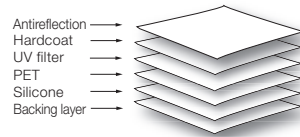


6085-92/6095-97/6616-51/6664-76 „Antireflex“ LCD Screen Protecting Film

High-quality film for use on LCD screen of digital cameras. Protects from scratches, dirt and fingerprints. Glare-free due to antireflection coating.

Hard coated PET film with UV protection, scratch resistant. Optimized for touch-screens. Attaches by adhesion due to silicone coating and can be removed without residues. Easy to apply, no bubbling. 1 piece.

Layer composition



6085: for 2.5" screens
6086: for 2.7" screens
6088: for 2.8" screens
6087: for 3.0" screens
6090: for 3.5" screens
6092: for 4.0" screens
16:9 aspect ratio

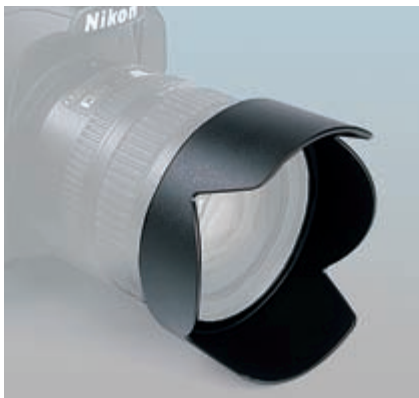
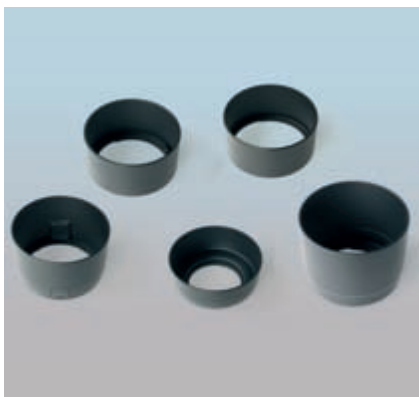
6095: for 3.0" screens
6097: for 3.5" screens

Also available custom-cut for these SLRs and CSCs:

6616: for Canon 7D *
6618: for Canon 60D / 600D / Panasonic TZ41
6619: for Canon 1100D
6625: for Nikon D3100
6626: for Olympus E450 / E420 / E520
6627: for Olympus E620
6628: for Panasonic G3 / G5 / GF3 / GF5 / GX1 / FZ48
6629: for Panasonic TZ18 / 22 / 25 / 31 / 36, Leica V-Lux 30 / 40, Nikon P510
6630: for Panasonic GH1 / G1
6631: for Panasonic GF1 / GF2 / FZ45 / LX5 / LX7, Leica D-Lux 5 / 6
6632: for Panasonic GH2 / G2 / FZ100, FZ150 / FZ200, Leica V-Lux 2/3
6634: for Sony Alpha 230 / 290 / 450
6636: for Sony Alpha 500 / 550
6637: for Sony Alpha 580
6638: for Sony Alpha 33 / 35 / 55 and NEX 3 / 3N / C3 / 5 / 5N / 6 / 7 / F3
6640: for Sony Alpha 57 / 65 / 77, DSC-HX200
6642: for Olympus OM-D E-M5
6643: for Nikon D600 *
6644: for Nikon D3200
6645: for Nikon D7000 *
6646: for Nikon D5100 / D5200
6648: for Nikon 1 V1, Fujifilm HS 30
6649: for Nikon D800 *
6650: for Canon 5D Mark III
6651: for Canon 650D
6664: for Canon EOS M
6665: for Nikon 1 J2, 1 J3, 1 V2
6667: for Canon 6D
6668: for Canon 1D C / 1D X *
6669: for Nikon D4 *
6670: for Nikon D7100 *
6675: for Canon 100D
6676: for Canon 700D

* additional film(s) for status LCD(s) included





6865-99 Lens Hood

- 6865:** CW88C (replaces Canon EW-88C), for Canon EF 24-70/2.8L II USM
- 6866:** CT67 (replaces Canon ET-67), for Canon EF 100/2.8 USM/Makro USM
- 6868:** CT73 (replaces Canon ET-73), for Canon EF 100/2.8 L Makro IS USM
- 6869:** CT73B (replaces Canon ET-73B), for Canon EF 70-300/4-5.6 L IS USM, white
- 6870:** CT74 (replaces Canon ET-74), for Canon EF 70-200/4.0 L (IS) USM, white
- 6871:** CT83C (replaces Canon ET-83C), for Canon EF 100-400/4.5-5.6 L IS USM, white
- 6873:** CT87 (replaces Canon ET-87), for Canon EF 70-200/2.8 L IS II USM, white
- 6874:** CW83F (replaces Canon EW-83F), for Canon EF 24-70/2.8 L USM
- 6875:** CW83G (replaces Canon EW-83G), for Canon EF 28-300/3.5-5.6 L IS USM, white
- 6876:** CW83H (replaces Canon EW-83H), for Canon EF 24-105/4.0 L IS USM
- 6878:** CW88 (replaces Canon EW-88), for Canon EF 16-35/2.8 L II USM
- 6879:** CW78E (replaces Canon EW-78E), for Canon EF-S 15-85/3.5-5.6 IS USM
- 6880:** CW60C (replaces Canon EW-60 C), for Canon EF 28-90/4-5.6 II (USM), Canon EF 28-80 (II/USM), Canon EF-S 18-55/3.5-5.6 IS (USM/II), Canon EF 22-55/4.0-5.6
- 6881:** CW73II (replaces Canon EW-73 II), for Canon EF 24-85/3.5-4.5 (USM)
- 6882:** CW78BII (replaces Canon EW-78 B II), for Canon EF 28-135/3.5-5.6 IS USM
- 6883:** CS71II (replaces Canon ES-71 II), for Canon EF 50/1.4 USM
- 6884:** CT65III (replaces Canon ET-65 III), for Canon EF 85/1.8 (USM), Canon EF 100/2.0 USM, Canon EF 135/2.8 Soft-Fokus, Canon EF 70-210/3.5-4.5 USM, Canon EF 100-300/4.5-5.6 (USM)
- 6885:** CT65B (replaces Canon ET-65 B), for Canon EF 70-300/4.5-5.6 DO IS USM, Canon EF 70-300/4.0-5.6 IS USM
- 6886:** CT67B (replaces Canon ET-67 B), for Canon EF-S 60/2.8 Macro USM
- 6887:** CS62 (replaces Canon ES-62), for Canon EF 50/1.8 II
- 6888:** CT60III (replaces Canon ET-60 III), for Canon EF 75-300/4.0-5.6 III (USM), Canon EF 90-300/4.5-5.6 (USM), Canon EF-S 55-250/4.0-5.6 IS
- 6889:** CW73B (replaces Canon EW-73 B), for Canon EF-S 17-85/4.0-5.6 IS USM, Canon EF-S 18-135/3.5-5.6 IS
- 6890:** CW78D (replaces Canon EW-78 D), for Canon EF-S 18-200/3.5-5.6 IS, Canon EF 28-200/3.5-5.6 (USM)
- 6891:** CW83E (replaces Canon EW-83 E), for Canon EF-S 10-22/3.5-4.5 USM, Canon EF 17-40/4.0L USM, Canon EF 16-35/2.8L USM (old version)
- 6892:** CW83J (replaces Canon EW-83 J), for Canon EF-S 17-55/2.8 IS USM
- 6893:** NB32 (replaces Nikon HB-32), for Nikon AF-S DX 18-70/3.5-4.5G IF-ED, Nikon AF-S 18-105/3.5-5.6 G ED VR, Nikon AF-S 18-135/3.5-5.6 IF-ED
- 6894:** NB45 (replaces Nikon HB-45), for Nikon AF-S DX 18-55/3.5-5.6G ED/EDII/VR
- 6895:** NB37 (replaces Nikon HB-37), for Nikon AF-S DX 55-200/4-5.6 G ED VR
- 6899:** SH108 (replaces Sony ALC-SH 108), for Sony DT 18-55/3.5-5.6 SAM

Dedicated lens hoods for specific lenses of digital SLRs. Can also be mounted in reversed position on the lens for saving space (except 6887).

Made from impact-resistant plastic.

6829/31
Lens Hood for Pancake Lenses

Made of matte black rubber. Rotating connecting ring with metal mount and locking screw. Includes lens cap for use with mounted lens hood.

6829: For Panasonic Lumix G with 1.7/20 mm or 2.5/14 mm Pancake lens, also for JVC and Panasonic camcorders with 46 mm filter thread.

6831: For Olympus Pen with M.Zuiko Digital 2.8/17 mm or M.Zuiko Digital 3.5-5.6/14-42 mm II Pancake lens, also for Panasonic Lumix G X Vario PZ 3.5-5.6/14-42 mm Pancake lens and Canon, JVC and Sony camcorders with 37 mm filter thread.



6820-27/6850-53
3-in-1 Lens Hood

For lenses with 28 to 200 mm focal length (35 mm equivalent). Made of matte black silicone, foldable. With light baffles. Metal screw-in mount. Filter thread.

6850: \varnothing 37 mm

6851: \varnothing 43 mm

6853: \varnothing 46 mm

6820: \varnothing 49 mm

6821: \varnothing 52 mm

6822: \varnothing 55 mm

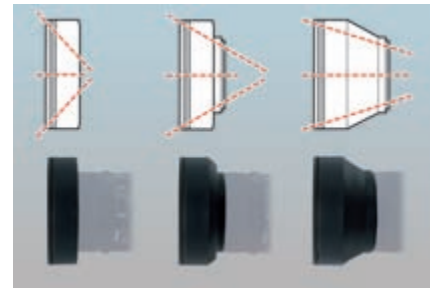
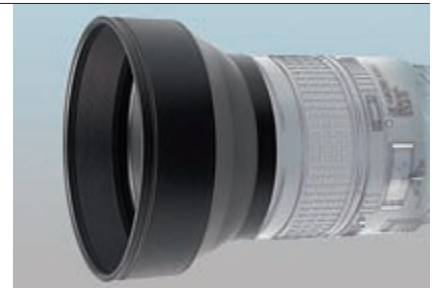
6823: \varnothing 58 mm

6824: \varnothing 62 mm

6825: \varnothing 67 mm

6826: \varnothing 72 mm

6827: \varnothing 77 mm

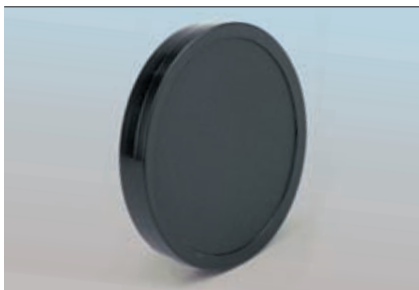




6833-48 Snap-On Lens Cap

Reliable protection by clamp-on design for snapping on to filter thread of lens. With lens cap keeper. Can also be used with lens hood mounted.

6845: ø 37 mm	6837: ø 62 mm
6847: ø 43 mm	6838: ø 67 mm
6848: ø 46 mm	6839: ø 72 mm
6833: ø 49 mm	6840: ø 77 mm
6834: ø 52 mm	6841: ø 82 mm
6835: ø 55 mm	6842: ø 86 mm
6836: ø 58 mm	



6900-92 Lens Cap

Diameters are the **inside dimensions** of the lens cap. This corresponds with the outside diameter of the lens (or filter) which is covered with the lens cap.

Slip lid, made of flexible plastic, black.

6915: ø 15 mm	6948: ø 48 mm
6916: ø 16 mm	6949: ø 49 mm
6917: ø 17 mm	6950: ø 50 mm
6918: ø 18 mm	6951: ø 51 mm
6919: ø 19 mm	6952: ø 52 mm
6920: ø 20 mm	6953: ø 53 mm
6921: ø 21 mm	6954: ø 54 mm
6922: ø 22 mm	6955: ø 55 mm
6923: ø 23 mm	6956: ø 56 mm
6924: ø 24 mm	6957: ø 57 mm
6925: ø 25 mm	6958: ø 58 mm
6926: ø 26 mm	6959: ø 59 mm
6928: ø 28 mm	6960: ø 60 mm
6929: ø 29 mm	6961: ø 61 mm
6930: ø 30 mm	6962: ø 62 mm
6931: ø 31 mm	6963: ø 63 mm
6932: ø 32 mm	6964: ø 64 mm
6933: ø 33 mm	6965: ø 65 mm
6934: ø 34 mm	6967: ø 67 mm
6935: ø 35 mm	6968: ø 68 mm
6936: ø 36 mm	6970: ø 70 mm
6937: ø 37 mm	6971: ø 71 mm
6938: ø 38 mm	6972: ø 72 mm
6939: ø 39 mm	6974: ø 74 mm
6940: ø 40 mm	6975: ø 75 mm
6941: ø 41 mm	6977: ø 77 mm
6942: ø 42 mm	6980: ø 80 mm
6943: ø 43 mm	6982: ø 82 mm
6944: ø 44 mm	6985: ø 85 mm
6945: ø 45 mm	6990: ø 90 mm
6946: ø 46 mm	6900: ø 100 mm
6947: ø 47 mm	6992: ø 120 mm



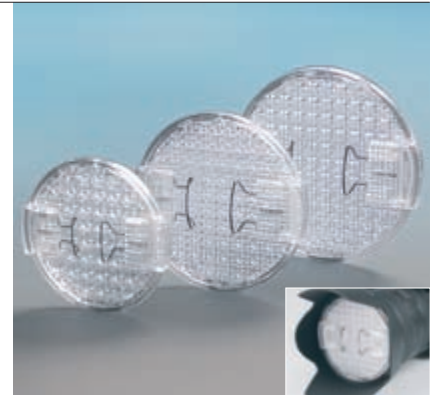
6056 Lens Cap Keeper

Protects against loss of lens cap. A self-adhesive plate is stuck to the lens cap and attached to the lens by an elastic cord.

6605-11
„Vivicap“ White Balance Filter

Snap-on filter with specially designed prism structured surface for white-balancing of digital cameras and camcorders. Easy to use clamping mechanism provides for quick installation and removal. Serves also as a lens cap and can also be attached when a lens hood is used.

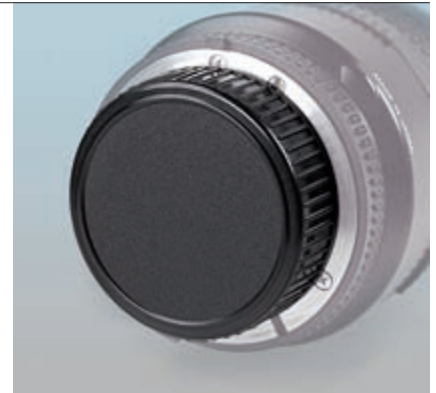
- 6605:** ø 52 mm
- 6606:** ø 55 mm
- 6607:** ø 58 mm
- 6608:** ø 62 mm
- 6609:** ø 67 mm
- 6610:** ø 72 mm
- 6611:** ø 77 mm



6531-38
Lens Rear Cap

Made from impact-resistant plastic, black.

- 6531:** for Canon EOS
- 6532:** for Minolta MD
- 6533:** for Sony Alpha / Minolta AF
- 6535:** for Nikon
- 6536:** for Olympus OM
- 6537:** for Pentax K
- 6538:** for Micro Four Thirds
(Olympus/Panasonic)



6521-28
Camera Body Cap

Made from impact-resistant plastic, black.

- 6521:** for Canon EOS
- 6522:** for Minolta MD
- 6523:** for Sony Alpha / Minolta AF
- 6525:** for Nikon
- 6526:** for Olympus OM
- 6527:** for Pentax K
- 6528:** for Micro Four Thirds
(Olympus/Panasonic)





6542-99 Filter Adapter Ring

For mounting filter and front attachments to lenses with deviating mounting threads. Precision metal rings with dull black surface (6585: silver finish).

Lens thread – Filter thread

6547: 27 - 37	6555: 52 - 49
6584: 28 - 37	6556: 52 - 55
6585: 30 - 37	6557: 52 - 58
6586: 30.5 - 37	6558: 52 - 62
6588: 34 - 37	6561: 55 - 52
6589: 37 - 43	6562: 55 - 58
6542: 37 - 46	6563: 55 - 62
6543: 37 - 49	6564: 55 - 67
6544: 37 - 52	6565: 58 - 52
6591: 39 - 43	6567: 58 - 55
6592: 40.5 - 43	6568: 58 - 62
6593: 40.5 - 46	6566: 58 - 67
6594: 40.5 - 49	6569: 62 - 58
6548: 40.5 - 52	6570: 62 - 67
6599: 41.5 - 46	6571: 62 - 72
6595: 43 - 46	6572: 62 - 77
6596: 43 - 49	6573: 67 - 58
6549: 43 - 52	6574: 67 - 72
6545: 46 - 49	6575: 67 - 77
6546: 46 - 52	6576: 72 - 58
6597: 46 - 55	6577: 72 - 77
6550: 49 - 52	6578: 77 - 58
6551: 49 - 55	6579: 77 - 82
6552: 49 - 58	



6508-19 T-Mount Adapter

Thread adapter for mounting lenses, bellows, slide duplicators, focussing helical mounts, etc. with T-mount on various cameras.

6508: Micro Four Thirds (Olympus/Panasonic)
6509: Sony NEX
6511: Pentax K
6512: Nikon
6513: Minolta MD
6514: Canon FD
6515: Olympus OM
6517: Yashica / Contax
6518: Sony Alpha / Minolta AF
6519: Canon EOS (Autofocus)

6506
„Digital“ Slide Duplicator

Suitable for digital SLRs and digital compacts with front lens thread. Attaches to the filter thread of the lens. 52 mm connecting thread. 58-52 mm adapter ring included. Adapter rings for other connecting threads see below.

Detachable achromatic 10 dioptre macro lens, can also be used separately. A lens with a focal length between 80 and 120 mm (based on full-frame sensor) is required to achieve full size copies, larger frames require higher focal length.

Includes holder for two 35 mm slides.

Length: approx. 12.5 cm (4.9 in.)

Suitable adapter rings:

6561: 55 – 52 mm

6565: 58 – 52 mm (included)

6569: 62 – 58 mm

6573: 67 – 58 mm

6576: 72 – 58 mm

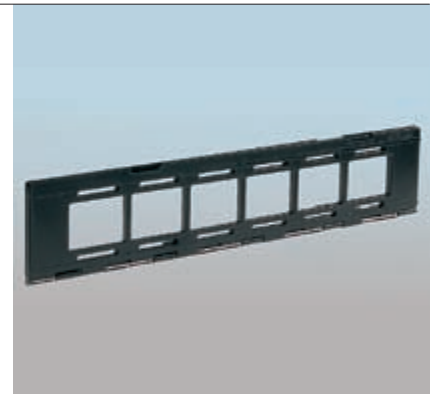
6578: 77 – 58 mm



6507
Film Strip Carrier

For six 35mm negatives or unmounted slides. For use with Slide Duplicator 6506.

Length: approx. 27 cm (10.6 in.)





6161

6161-62 „Twin1 R3“ Wireless/Wired Remote Shutter Release

6161: Twin1 R3-UT, for Canon 60D, 100D, 300D, 350D, 400D, 450D, 500D, 550D, 600D, 650D, 700D, Pentax *istD, *istDL(2), *istDS(2), K-5, K-5 II(S), K-7, K10D, K20D, K-30, K100D, K110D, K200D, Samsung GX-1L, GX-1S, GX-10, GX-20, IR only: Canon EOS M, Pentax K-m, K-r, K-x, X5

6162: Twin1 R3-UTN2, for Nikon D90, D600, D3200, D5000, D5100, D5200, D7000, D7100, Coolpix A, P7700, IR only: Nikon D40(x), D50, D60, D70(s), D80, D3000, 1 J1, 1 J2, 1 V1, 1 V2, Coolpix P7100

Suitable for many (D)SLR and compact system cameras with built-in infrared receiver. Depending on the type of camera, the Twin1 R3 transmitter can be used as a wireless IR or as a wired remote shutter release. Half-shutter mode (activates TTL metering and autofocus prior to shooting), delay shot mode (wireless), bulb shot (wireless and wired). The single, large release button provides for error-free operation. Can also be used as a flash light, built-in LED works either continuously or blinks periodically. 88 x 26 x 17 mm (3.5 x 1 x 0.7 in.), 19 g (0.7 oz.).

Maximum operating range: 50 m (150 ft.) (Nikon, Pentax, Samsung), 25 m (75 ft.) (Canon).

Includes 1 m (3 ft.) release cable, 23A battery (12 V) and key ring.



6167-71 „Twin1 R4“ Wireless/Wired Remote Shutter Release

6167: Twin1 R4N, for Nikon and Fuji cameras with 10 pin connector.

6168: Twin1 R4U, for Canon, Pentax, Samsung and Sigma cameras with 2.5 mm jack plug connector.

6169: Twin1 R4C, for Canon cameras with N3 connector.

6170: Twin1 R4S, for Sony and Minolta cameras with 3 pin connector.

6171: Twin1 R4P, for Panasonic and Leica cameras with 2.5 mm jack plug connector.

Suitable for many (D)SLR and compact system cameras. Kit contains transmitter and receiver, 1 m (3 ft.) release cable and more accessories.

Transmitter can be used as a wireless IR or as a wired remote shutter release. Half-shutter mode (activates TTL metering and autofocus prior to shooting), delay shot mode (wireless), bulb shot (wireless and wired). The single, large release button provides for error-free operation. Can also be used as a flash light, built-in LED works either continuously or blinks periodically. 88 x 26 x 17 mm (3.5 x 1 x 0.7 in.), 19 g (0.7 oz.).

Twin 1 R4U, R4C, R4S, R4P receiver: Compact unit with two red indicator LEDs. 40 x 30 x 25 mm, 11 g (1.6 x 1.2 x 1 in., 0.4 oz.). Includes spare battery.

Twin1 R4N receiver: Extremely small and light-weight (only 6 g / 0.2 oz.), red indicator LED. Powered by the camera, needs no extra batteries. 15 x 15 x 22 mm (0.6 x 0.6 x 0.9 in.).

Maximum working range: 100 m (330 ft.)

Batteries (included):

Transmitter: 23A type (12V)

Receiver: CR2032 type (3V) (except R4N)

Please check our website at www.kaiser-fototechnik.de for an up-to-date camera compatibility list.



6167

6177-81 „Twin1 RF“ Wireless/Wired Remote Shutter Release

- 6177:** Twin1 RFU, for Canon, Pentax, Samsung and Sigma cameras with 2.5 mm jack plug connector.
- 6178:** Twin1 RFC, for Canon cameras with N3 connector.
- 6179:** Twin1 RFN, for Nikon and Fuji cameras with 10 pin connector.
- 6180:** Twin1 RFS, for Sony and Minolta cameras with 3 pin connector.
- 6181:** Twin1 RFP, for Panasonic and Leica cameras with 2.5 mm jack plug connector.

Please check our website at www.kaiser-fototechnik.de for an up-to-date camera compatibility list.

Suitable for many (D)SLR and compact system cameras. Kit contains transmitter and receiver, 1 m (3 ft.) release cable and more accessories.

Transmitter can be used as a wireless radio-controlled or as a wired remote shutter release. Half-shutter mode (activates TTL metering and autofocus prior to shooting), delay shot mode (wireless), bulb shot (wireless and wired). The single, large release button provides for error-free operation. Can also be used as a flash light. 88 x 26 x 17 mm (3.5 x 1 x 0.7 in.), 19 g (0.7 oz.).

Twin 1 RFU, RFC, RFS, RFP receiver: Compact unit with two red indicator LEDs. 40 x 30 x 25 mm, 11 g (1.6 x 1.2 x 1 in., 0.4 oz.). Includes spare battery.

Twin1 RFN receiver: Extremely small and lightweight (only 6 g / 0.2 oz.), red indicator LED. Powered by the camera, needs no extra batteries. 15 x 15 x 22 mm (0.6 x 0.6 x 0.9 in.).

Maximum working range: 100 m (330 ft.).
Operating frequency: 2.4 GHz. Batteries (included): Transmitter: 23A type (12V). Receiver: CR2032 type (3V) (except RFN).



6131-35 „Twin1 ISR“ Wired Remote Shutter Release

- 6131:** Twin1 ISR iC, for Canon, Pentax, Samsung and Sigma cameras with N3 or 2.5 mm jack plug connector.
- 6133:** Twin1 ISR iN, for Nikon and Fuji cameras with 10 pin connector and for Nikon D70s, D80, D90, D600, D3100, D3200, D5000, D5100, D5200, D7000, D7100, Coolpix P7700, A.
- 6134:** Twin1 ISR i04, for Sony and Minolta cameras with 3 pin connector.
- 6135:** Twin1 ISR i07, for Panasonic and Leica cameras with 2.5 mm jack plug connector.

Please check our website at www.kaiser-fototechnik.de for an up-to-date camera compatibility list.

Remote release for interval, continuous, bulb and time shutter control.

Normal shutter release works also without or with empty battery. Delay start is supported. Timer and interval time ranges from 1 second to 99 hours, 59 minutes, 59 seconds. Exposure numbers in interval and continuous mode range from 1 to 9.999. 4-way-operation button. Illuminated triple-spaced LCD, three types of display mode. Easy user interface for all settings.

All buttons can be locked to prevent unintentional operation. Beep sound can be switched off. Low battery warning.

Battery (included): 3 V (CR 2032)
Operating time: approx. 2 months
Release cable length: 1 m
Dimensions: 23 x 16 x 100 mm
(0.9 x 0.6 x 3.9 in.)
Weight: 26 g (0.9 oz.) (incl. batteries)





6187-93 „MonoCR“ Wired Remote Switch

Compact ergonomically designed remote release. Two-stage release button (half-shutter mode activates TTL metering and autofocus prior to shooting). Release button can be locked for bulb shot, with color indicator. Release cable can be detached and extended by optional 6185 extension cable. No battery required.

Length of coiled cable (extended): 50 cm
(19.7 in.)

Dimensions: 105 x 34 x 23 mm
(4.1 x 1.3 x 0.9 in.)
Weight: 30 g (1.1 oz.)



Please check our website at www.kaiser-fototechnik.de for an up-to-date camera compatibility list.

6187: MonoCR-C2, replaces Canon RS-60E3 and Pentax CS-205, for Canon, Pentax, Samsung and Sigma cameras with 2.5 mm jack plug connector

6188: MonoCR-C1, replaces Canon RS-80N3, for Canon cameras with N3 socket

6189: MonoCR-N1, replaces Nikon MC-30, for Nikon and Fuji cameras with 10 pin socket

6190: MonoCR-N3, replaces Nikon MC-DC2, for Nikon cameras from D90 up to D7100

6191: MonoCR-S1, replaces Sony RM-S1AM and Minolta RC-1000, for Sony and Minolta cameras with 3 pin socket

6192: MonoCR-P1, replaces Panasonic DMW-RSL1, for Panasonic and Leica cameras with 2.5 mm jack plug connector

6193: MonoCR-O2, replaces Olympus RM-UC1, for Olympus PEN, OM-D, E series (in part)



6185 Extension Cable

For MonoCR wired release switches. Also suitable for Twin1 R3, Twin1 R4, Twin1 RF and Twin1 ISR release cables.

Length: 2 m (6 ft.). Several cables can be used in connection to get longer range.



6101-02 Cable Release

Black fabric covering.

6101: Length 25 cm (9.8 in.)

6102: Length 50 cm (19.7 in.) threaded rotating tip



6103/05 Cable Release

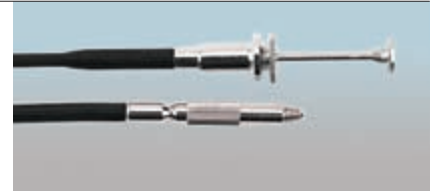
With locking screw.
Black fabric covering.

6103: Length 15 cm (6 in.)

6105: Length 50 cm (19.7 in.), threaded rotating tip

**6108
Cable Release**

With auto-lock disc.
Black fabric coating.
Length 50 cm (19.7 in.),
threaded rotating tip



**6184
Professional Cable Release**

Upper part with formed grip and auto-lock disc. Interchangeable release with black plastic covering and threaded rotating tip. Release travel adjustable.
Length: 50 cm (19.7 in.)



**6148
Cable Release Adapter**

For connecting the standard cable release to cameras with awkwardly placed connecting thread. L- shape. Threaded rotating tip.



**6154
Cable Release Adapter**

For the use of conventional cable releases on cameras (e.g. auto focus or compact cameras) which have only a socket to connect an electric release, or do not have a cable release bush.



**6143-44
Pneumatic Remote Release**

6143: With 5 m (16 1/2 ft.) long release tube and winding reel. 15 cm (5.9 in.) long cable release with threaded rotating tip.

6144: With 10 m (33 ft.) long release tube, which can be divided in 2 x 5 m (2 x 16 1/2 ft.). 15 cm (5.9 in.) long cable release with threaded rotating pin. With winding reel and plastic box.





6780
„Neopren“ Camera Strap

For cameras with two strap connectors. Shoulder pad made from flexible high-grade Neoprene, edges covered with fabric. High carrying comfort. Ergonomically shaped, conforms to shoulder or neck. Durable and sturdy. Length adjustable. End sections can be detached from the Neoprene part and reconnected to serve as a wrist strap.

Length: 140 cm (55 in.) max.
Width: 65/40 mm (2.6 / 1.6 in.)

Colour: black



6771
Professional Camera Strap

Highly durable woven strap with non-slip shoulder pad on the underside. Length adjustment at both ends. For cameras with round or flat eyelets.

Width: approx. 30 mm (1.2 in.)
Length: approx. 100 cm (39.4 in.)

Color: black



6791
Professional Camera Strap

Extremely hard-wearing woven strap with widened shoulder area. Non-slip shoulder area. Length can be adjusted on both sides. For cameras with round or flat eyelets. Width approx. 12/50 mm (.5/2 in.), length approx. 110 cm (3 ft. 7 in.)

Color: black



6751
Camera Strap

Made of high-grade polyester webbing. With woven-in rubber filaments on inside to prevent slipping. Ends of strap with quick-release safety locks. Length adjustable. For cameras with round or flat eyelets. Width: approx. 30 mm (1.2 in.)
Length: approx. 110 cm (3 1/2 ft.)
Color: black



6742
„Neopren“ Camera Strap

Carrying strap for digital compacts with single strap connector. Shoulder pad made of high-grad soft Neoprene, edges covered with fabric. High carrying comfort. Ergonomically shaped, conforms to shoulder or neck. Quick-release lock. Length: approx. 53 cm (20.9 in.)
Width: approx. 45/30 mm (1.8 / 1.2 in.)

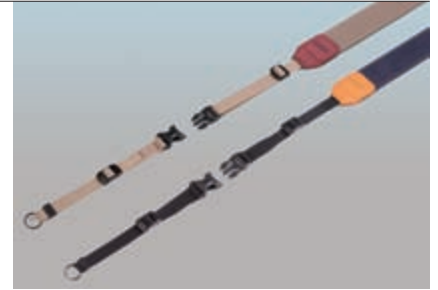
6778-79
„Adventure“ Camera Strap

Heavy-duty woven strap for cameras with two round or flat fastening eyes. Inner surface with non-slip protection. Adjustable length, max. 145 cm (57.1 in.).

Detachable end sections can be reconnected to serve as a wrist strap.

6778: Denim, width 35 mm (1.4 in.)

6779: Khaki, width 38 mm (1.5 in.)



6752-55
Genuine Leather Carrying Strap

For digital compacts with one fastening eye. Also suitable for mobile phones, MP3 players etc.

Width: 10 mm (0.4 in.)

Length: approx. 46 cm (18.1 in.)

6752: black

6753: red

6754: olive

6755: brown



6747-48
„Reflex“ Neck Strap

Narrow reflective shoulder strap.

For digital compact cameras with single strap connector, also suitable for mobile phones, MP3 players, etc. Quick-release lock.

Length: approx. 47 cm (18.5 in.)

Width: 1 cm (0.4 in.)

6747: silver/black

6748: silver/red

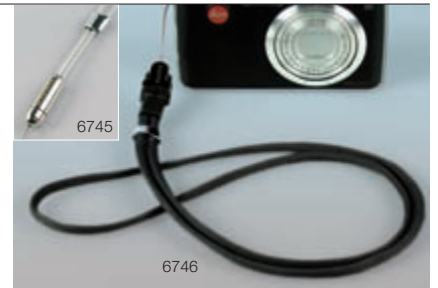


6745-46
Neck Chain / Carrying Strap

For cameras with single strap connector, also suitable for mobile phones, MP3 players, etc.

6745: Gracefully built silver chain with clear plastic cover. Goes perfectly with the styling of today's digital compacts. Can be easily detached. Length: approx. 46 cm (18.1 in.)

6746: Soft elastic textile fabric. Quick release lock. Length: approx. 49 cm (19.3 in.)





6701

6701-02 „Profi“ Camera Wrist Strap with Mini-Stand

Suitable for larger compacts, CSCs and (D)SLRs. Soft padded genuine leather hand support with adjustable fixtures.

Camera mounting plate with tripod thread and foldable legs providing a secure stand when put on table or floor. Counter-sunk fastening screw.

Non-slip camera rest.

Height of mounting plate: approx. 10 mm (0.4 in.).

6701: „Profi“ Camera Wrist Strap

6702: „Pro 2.0“ Camera Wrist Strap, with additional safeguard belt around the wrist for more safety and stability.



6702



6737-40 Genuine Leather Wrist Strap

For digital compacts with one fastening eye. Also suitable for mobile phones, MP3 players, etc.

Width: 10 mm (0.4 in.)

Length: approx. 22 cm (8.7 in.)

6737: black

6738: red

6739: olive

6740: brown



6735

6735-36 Wrist Strap

For cameras with single strap connector, also suitable for many mobile phones, MP3 players, etc.

6735: Gracefully built silver chain with clear plastic cover. Goes perfectly with the styling of today's digital compacts. Can be easily detached.
Length: approx. 24 cm (9.4 in.)

6736: Soft elastic textile fabric. Quick release lock. Length: approx. 26 cm (10.2 in.)

3272
Hand Grip

For lighting units, cameras, etc.
With foam shell. 1/4" connection thread with washer made of elastic plastic, 1/4" tripod thread.
Includes snap-hook with key ring and fixture for tripod thread.
Height: approx. 120 mm (4.7 in.)



96008
Video Shoulder Pod

Combined chest and shoulder pod for camcorders. Pivoting mounting plate with 1/4" thread, securing pin and non-slip face.
Length steplessly adjustable and lockable in any position.
Folded flat the pod can stay fitted to the camcorder. Adjustable strap.



6370-76
Photo Functional Gloves

Combination of mitten and half finger gloves for perfect mobility, secure grip and ideal protection against cold.
Mitten and thumb cover can be folded back and fastened with a Velcro strip.
Made of breathable, skin friendly fleece with anti-slip coating on the palm.
Colour: black
6370: size M
6372: size L
6374: size XL
6376: size XXL





8281-89
„digiShell“ Hard Shell Camera Bag

Compact camera bags with hard shell exterior and two-way zipper. Interior accessory pocket. With belt loop, detachable carrying strap and snap hook.

„digiShell 1“,
9.5 x 6 x 2.5 cm (3.7 x 2.4 x 1 in.)

8281: black

8282: blue

8283: grey



„digiShell 2“,
10.8 x 6.5 x 3.3 cm (4.3 x 2.6 x 1.3 in.)

8287: black

8288: blue

8289: grey



All measurements are inside dimensions.



8255/61
„digiSkin“ Soft Leather Bags

Small belt pouches made of soft genuine leather surrounding the camera like a second skin. Velvety inner lining, interior pocket for memory card and belt loop. With magnetic catch.

8255: „digiSkin 1“, 6.0 x 9.0 x 2.6 cm
(2.4 x 3.5 x 1.0 in.)

8261: „digiSkin 7“, 5.8 x 9.5 x 2.8 cm
(2.3 x 3.7 x 1.1 in.)

All measurements are inside dimensions.

8825-27 „SmartLoader“ Camera Bag

Lightweight and stable bag for cameras and camcorders.

Main compartment with divider. Lid with inside mesh pocket, opens away from the body and stays open in a fixed position. Mesh pockets on both sides. Zipped front pocket with large cover and card pocket.

Padded handle. Adjustable carrying strap with shoulder pad. Metal D-rings and snap hooks. Belt loops.

8825: SmartLoader S, for megazoom cameras and camcorders. Inside dimensions (WxHxD): 10.6 x 13 x 8.7 cm (4.2 x 5.1 x 3.4 in.).

8826: SmartLoader M, for bridge cameras, CSCs and camcorders. Inside dimensions (WxHxD): 16 x 10 x 9 cm (6.3 x 3.9 x 3.5 in.).

8827: SmartLoader L, for DSLR cameras. With lens support divider. Inside dimensions (WxHxD): 17.5 x 13 x 10 cm (6.9 x 5.1 x 3.9 in.).

8818 „EasyLoader“ Camera Bag

For digital and conventional SLRs.

With accessory pockets inside the outer lid and on both sides. Two tops, which can be connected via a Velcro closure. Spacious front pocket with organizer trays and zipper.

This camera bag allows quick access, as the top opens away from the body and stays open in a fixed position.

With carrying handle, detachable, adjustable and padded shoulder strap and belt loop.

Inside dimensions: 15.5 x 15 x 10 cm
(6.1 x 5.9 x 3.9 in.)





6066-71 „Tiltall“ Tripod

Sturdy camera tripod. Tripod legs and center column made from aircraft aluminium and carbon fiber respectively. Four-section tripod legs with anti-twist protection and twist locks for fast and easy operation. Spread angle of legs can be individually adjusted and locked in three positions, covered ratchet tothing with release button. 180 degrees reversible legs for reduced pack size. Rubber feet with retractable metal spikes made from stainless steel. Extendable center column with anti-twist device, twist lock and spring loaded hook. Reversible center column for macro shots. Center column can also be removed for close-to-ground level-setting. 1/4" - 3/8" interchangeable thread. All tripod legs have leg warmers made of foam layers covering the top section. One tripod leg is detachable and can be converted to a monopod by adding the removable center column.

Comes with a padded carrying case with adjustable shoulder strap and carry handle.

Code no.	6066	6067	6068
Type	TE-224	TE-254	TE-284
Material	Aluminium	Aluminium	Aluminium
Tube ø, max. (mm/in.)	22 / 0.9	25.5 / 1.0	29 / 1.1
Max. height (cm/in.)	140 / 55.1	147 / 57.9	162 / 63.8
Min. height (cm/in.)	14 / 5.5	14 / 5.5	15 / 5.9
Folded length (cm/in.)	40 / 15.7	43 / 16.9	47 / 18.5
Monopod height (cm/in.)	68-145 / 26.8-57.1	71-152 / 28.0-59.8	78-169 / 30.7-66.5
Weight (kg/lbs.)	1.1/2.4	1.4 / 3.1	1.8 / 4.0
Max. load (kg/lbs.)	8 / 17.6	8 / 17.6	12 / 26.4
Recommended ball head	BH-10 (6001)	BH-20 (6002)	BH-30 (6003)



Code no.	6069	6070	6071
Type	TC-224	TC-254	TC-284
Material	Carbon	Carbon	Carbon
Tube ø, max. (mm/in.)	22 / 0.9	25.5 / 1.0	29 / 1.1
Max. height (cm/in.)	140 / 55.1	147 / 57.9	162 / 63.8
Min. height (cm/in.)	14 / 5.5	14 / 5.5	15 / 5.9
Folded length (cm/in.)	40 / 15.7	43 / 16.9	47 / 18.5
Monopod height (cm/in.)	68-145 / 26.8-57.1	71-152/28.0-59.8	78-169 / 30.7-66.5
Weight (kg/lbs.)	0.9 / 2.0	1.1 / 2.4	1.4 / 3.1
Max. load (kg/lbs.)	8 / 17.6	8 / 17.6	12 / 26.4
Recommended ball head	BH-10 (6001)	BH-20 (6002)	BH-30 (6003)



6060-61 „Tiltall“ Monopod

Compact and sturdy monopod made from aircraft aluminium (6060) or eight-layer carbon fiber (6061) respectively. Quick set-up by simultaneous opening of all three twist locks. Four sections with anti-twist protection, detachable rubber foot on stainless steel spike, foam rubber leg warmer protects against cold, wrist strap. Carry bag included.

Max. height: 162 cm (63.8 in.)
 Pack size / min. height: 51 cm (20.1 in.)
 Exchangeable threads: B 1/4 / B 3/8

6060: MP 284, max. load: 11 kg (24.2 lbs.)
 Weight: 490 g (1.1 lbs.)

6061: MP 284C, max. load: 12 kg (26.4 lbs.)
 Weight: 380 g (0.8 lbs.)





6001-03 „Tiltall“ Ball Head

Solid ball head for viewfinder cameras, CSCs and DSLRs. Quick release system with dovetail clamping and blocking screw. Slide-off protection. Quick release plate with non-slip surface, 1/4" D-ring screw with coin slot. Adjustable friction. Locking knob with inset tensioning dial for setting the "released" tension. 360 degree panning socket with blocking screw and graduated scale. All locking knobs have rubber coated gripping surface and are secured against unintentional removal.

Two spirit levels. 3/8" tripod bush.

Specifications:

Code no.	6001	6002	6003
Type	BH-10	BH-20	BH-30
Ball ø (mm/in.)	30/1.2	36/1.4	44/1.7
Socket ø (mm/in.)	45/1.8	51/2.0	60/2.4
Height (mm/in.)	92/3.6	98/3.9	107/4.2
Weight (g/lbs.)	360/0.8	440/1.0	570/1.3
Max. load (kg/lbs.)	8/17.6	10/22.0	12/26.4



6004-07 Quick Release Plate for „Tiltall“ Ball Heads

With slip-off protection and 1/4" camera screw, width 39 mm (1.5 in.), height 10 mm (0.4 in.).

6004: length 40 mm (1.6 in.), aligned for 6001

6005: length 50 mm (2 in.), aligned for 6002

6006: length 60 mm (2.4 in.), aligned for 6003

6007: length 100 mm (3.9 in.), with additional camera screw 1/4" for mounting a lens with a tripod collar ring and with 3/8" exchangeable camera screw.

Any quick release plate is suitable for all „Tiltall“ ball heads (6001-03).

6011 Professional Ball-and-Socket Head

Professional ball-and-socket head. Lever screw for clamping the ball. Adjustable friction brake for presetting of friction. Rotating panorama base with fluid system, fixing screw and scale in three-degree divisions from 0° to ± 180°. Interchangeable camera mounting thread 3/8" / 1/4". Tripod thread 3/8" with 1/4" thread adapter.

Weight: approx. 650 g (1 lbs. 4 oz.)
 Height: approx. 123 mm (4.8 in.)
 Base diameter: approx. 56 mm (2.2 in.)
 Loading capacity: 8 kg (17.6 lbs.) max.



6017 Ball-and-Socket Head

Medium-weight version. Lever screw for fixing the ball. Rotating panorama base with fluid system, fixing screw and scale in five-degree divisions from 0° to ± 180°. Camera mounting thread 1/4". Tripod thread 3/8" with 1/4" thread adapter.

Weight: approx. 300 g (10.6 oz.)
 Height: approx. 98 mm (3.9 in.)
 Base diameter: approx. 45 mm (1.8 in.)
 Loading capacity: 4 kg (8.8 lbs.) max.



6013/18 Ball-and-Socket Head

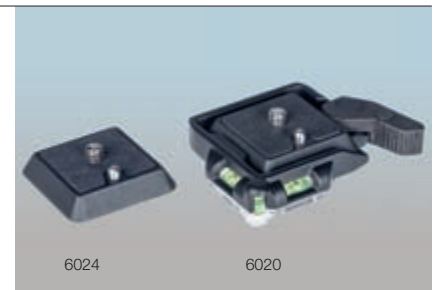
1/4" connecting thread with lock nut. Handy lever screw for clamping the ball. 3/8" tripod thread with 1/4" thread adapter.

	6013 Light-weight model	6018 Medium-weight model
Weight: approx.	45 g/1.6 oz.	110 g/3.9 oz.
Height: approx.	50 mm/2"	67 mm/2.6"
Socket-ø: approx.	24 mm/1"	30 mm/1.2"
Max. load: approx.	1 kg/2.2 lbs.	2 kg/4.4 lbs.



6020 Quick Release Connector

For quick mounting of camera on tripod. The upper part is mounted on the camera's tripod bush and stays there, the lower part is attached to the tripod. Release lever with additional safety lock, three spirit levels for precise positioning, 3/8" tripod thread with 1/4" thread adapter. Connector plate with 1/4" threaded pin and immersible anti-twist device. Made of aluminium die cast. Dimensions: approx. 82 x 17 x 55 mm (3.2 x 0.7 x 2.2 in.), weight: approx. 79 g (2.8 oz.)



6024 Quick Release Connector Plate

Suitable for Quick Release Connector 6020.



6019
Swivel Joint

For small lighting units, light-weight cameras etc.

Tilts continuously up to 90° and rotates up to 360°. Central locking screw. 1/4" connection thread. Mounts on the accessory shoe or a tripod. 1/4" tripod thread. Lock rings for secure hold. Height: approx. 42 mm (1.7 in.)



5534
Focusing Stage

For exact camera positioning for close-up, macro photography and copying work. Two positioning scales are perpendicular to one another. Setting range 95 mm (3.7 in.) each. Prismatic precision guide-ways with micro adjustment by helical gear toothed lath complete with lock screws and dials calibrated in millimeters. Mounting plate with rubber pad. 1/4" camera mounting screw, 1/4" connecting thread.

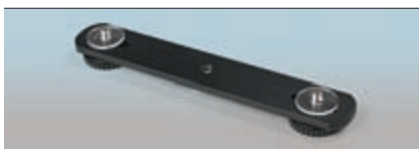


6029/32
Binocular Mount

For mounting binoculars on tripods. 1/4" tripod socket.

6029: Attaches via 1/4" mounting thread.

6032: Attachment at center focusing. Span range from 12 mm (0.5 in.) up to 20 mm (0.8 in.).



3273
Accessory Bracket

Light metal bracket for mounting two accessories with tripod thread on a tripod, hand grip or swivel joint. Two relocatable 1/4" tripod screws with soft washers. Center placed 1/4" tripod bush. Length: approx. 15.5 cm (6.1 in.). Width: approx. 2.5 cm (1.0 in.).



6401
Assorted Screw and Thread Adapters

For mounting lights and other accessories. Comprises: two shoe mounts, four lock nuts and one knurled nut.

For detailed description see page 62.



6400
Assorted Screw and Thread Adapters

Contents:

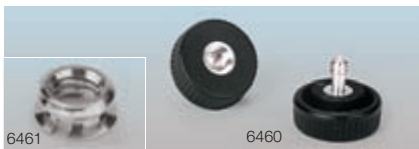
3 mounting thread adapters 1/4" - 3/8"

3 camera-case screws 1/4" - 3/8"

3 camera-case screws 1/4" - 1/4"

2 bracket screws 1/4" - 3/8"

8 thread adapters 3/8" - 1/4"



6460
Bracket Screws



Aluminium thread stem, extruded plastic body. \varnothing 30 mm (1.2 in.). B 1/4", A 3/8". Pack of two.

6461
Thread Adapters



Made of nickel-plated brass. Outer thread: 3/8", inner thread: 1/4". Pack of 10.

6045
DSLR Table Top Tripod

With three-section telescopic legs and extendable center column. 3-way pan head with tiltable camera platform for portrait and landscape shots. Built-in spirit level for exact alignment. Center column with suction cup for additional grounding on even and flat surfaces in lowest position. 1/4" tripod thread. Supplied incl. carrying pouch.

Max. load: 2 kg (4.4 lbs.)
Height: 18 to 30 cm (7.1-11.8 in.)
Folded length: 21 cm (8.3 in.)



6043-44
Multi-Level Table Tripod

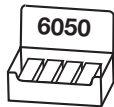
Compact table tripod for digital compacts. Three-section telescopic feet. 1/4" mounting thread.

6043: Ball head with locking screw. Height continuously adjustable from 8.5 to 26 cm (from 3.3 to 10.2 in.). Length (folded): approx. 165 mm (6.5 in.), weight: approx. 100 g (3.5 oz.).

6044: With pan and tilt head and pan bar. Height continuously adjustable from 8 to 27 cm (from 3.1 to 10.6 in.). Length (folded): approx. 155 mm (6.1 in.), weight: approx. 185 g (6.5 oz.).



6049
Table Tripod



Mini-tripod for compacts, microphones etc. Flexible legs for leveled standing on uneven surfaces. Pocket clip. Rubber feet. 1/4" thread.

Height (positioned): approx. 12 cm (4.7 in.)
Weight: approx. 50 g (1.8 oz.)



5004
Pocket Tripod

Clamp-on and table-top tripod with ball-and-socket head and 1/4" connecting thread. Screw-on clamp with 35 mm (1.4 in.) max. span. Can be used as clamp-on stand after unscrewing legs, which may be stored in the stand's centre tube.

Height: approx. 125 mm (4.9 in.)
Weight: approx. 150 g (5.3 oz.)





6039 „Quik Pod DSLR Action“ Handheld Tripod & Monopod

Extendable hand-held tripod and monopod, suitable for using cameras, camcorders and smartphones at sports, action and outdoor activities.

Allows for taking photos of oneself in front of a favourite background and for shooting from above, from below and around the corner. Also suitable for underwater use (complies with ASTM B117 / ISO 9227 saltwater standard).

Tilt head with quick release adapter. Quick release plate with 1/4" connecting thread, can be exchanged with adapter plate for GOPRO® action cameras. A mirror surface below the tilt head is useful for frame control.

Telescopic slide-out made from black anodized aluminium, with anti-twist protection and quick release clamps. Handle with anti-slip coating.

Completely extended and with mounted end cap the "Quik Pod DSLR Action" becomes a monopod.

Length: min. 47 cm (18.5 in.)
max. 135 cm (53.1 in.)

Weight: approx. 295 g (0.65 lbs.)

Max. load: 1.5 kg / 3.3 lbs. (hand-held)
3.5 kg / 7.7 lbs. (monopod)

Includes adapter plate for GOPRO® cameras, rubberized monopod end cap, water-resistant wrist strap, pocket clip, bumper attachment, snap hook, key ring, tightening tool and carrying bag.

6046 „Quik Pod pro+“ Handheld Tripod

Extendable hand-held tripod with telescopic slide-out cameras and camcorders.

Allows for taking photos of oneself in front of a favorite background and for shooting from above, from below or around the corner.

Can also be used underwater.

Ball head with locking screw. Camera platform with “1/4” tripod thread.

Mirror surface below the ball head is useful for framing.

Can easily be extended or folded.

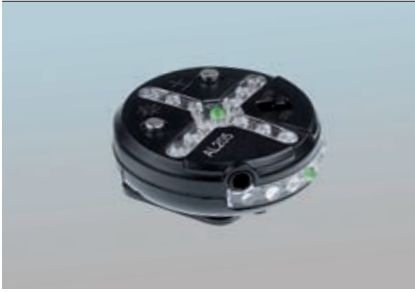
Length (extended): approx. 46 cm (18.1 in.)
(folded): approx. 19 cm (7.5 in.)

Load capacity: max. 450 g (16 oz.)

Weight: approx. 100 g (3.5 oz.)

Includes belt clip, snap-hook, protective cover, wrist strap and tripod feet to convert Quik Pod pro+ into a table tripod.





6378
„Action Level Cross“
Digital Level

Cross indicator with 13 LEDs for simultaneous two-dimensional indication. Additional 7 LED side level indicator. Provides level check for camera in landscape or portrait position using LEDs with different colors. LED brightness and tilting sensitivity can be adjusted. Customized zero point setting. Automatic power cut-off. Can be mounted in the camera's accessory shoe (not on Sony/Minolta) or by means of a magnetic support plate included. Connection and outlet for a second unit for remote control and display if camera is in an awkward position.

Diameter: approx. 32 mm (1.3 in.)
Height: approx. 16 mm (0.6 in.)
Weight: approx. 6 g (0.21 oz.)
Max. sensitivity: $\pm 0.2^\circ$
Operating time: approx. 20 up to 30 hours

Scope of supply: Action Level Cross, 3 V battery (CR 2023), magnetic base, connecting cable for second unit, strap, carrying pouch.



6383
"Action Level Sound"
Digital Spirit Level

Can be used in portrait and landscape formats. Levelling is indicated by LEDs of different colors and/or varying beep sounds. Brightness, sensitivity and signalling can be adjusted. Fits in standard hot shoe (not suitable for Sony/Minolta cameras). Supplied with additional magnetic support plate.

Extremely compact design. Does on most cameras not interfere with the camera flash when it pops out.

Dimensions: 32 x 25 x 17 mm (1.3 x 1 x 0.7 in.)
Weight: 5 g (0.18 oz.)
Max. sensitivity: $\pm 0.2^\circ$
Operating time: approx. 20 to 30 hours

Scope of supply: Action Level Sound, four 3 V batteries (CR 1220) – two of them spare batteries, magnetic support plate, strap.



**6387
Duplex Spirit Level**

With twin levels and mounting feet for landscape and portrait position. Transparent housing.

Dimensions: approx. 18 x 18 x 33 mm
(0.7 x 0.7 x 1.3 in.)



**6385
Spirit Level**

One level each for vertical and horizontal shooting position. With mounting shoe and 1/4" tripod bush.

Dimensions: approx. 20 x 25 x 35 mm
(.8 x 1 x 1.4 in.)



**6380
Duplex Screw-in Spirit Level**

With two levels for horizontal alignment. 1/4" threaded pin screws in camera's tripod thread. 1/4" threaded hole for mounting on tripods, brackets, holding arms etc.

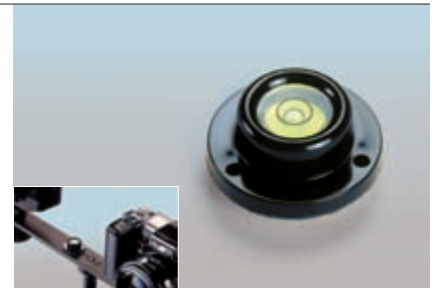
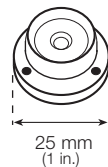
The accidental position of the two levels to the camera body due to the screw-in thread can be adjusted by replugging the threaded bolt.

Diameter: approx. 4 cm (1.6 in.)
Height: approx. 12 mm (0.5 in.)



**6386
Spirit Level**

Circular bubble, self-adhesive. For permanent attachment to cameras, tripods etc. Can also be screwed on.





6126-27 „TwinLink T2Di“ Radio and IR Flash Trigger

Set with transmitter and receiver for wireless triggering of studio and camera flashes. Simultaneous triggering via 2.4 GHz radio frequency and infrared signals using eight high performance LEDs. 32 user selectable channels. Transmitter and receiver with external aerials and LCD panels that can be illuminated. Automatic power cut-down after pre-determined time. Transmitter can be attached using the camera's hot shoe or with an adhesive accessory shoe mount in a convenient location.

Receiver with tripod thread and mounting magnets for attachment on metal surfaces or via an adhesive metal plate supplied with the set. Receiver has a hot shoe and trigger cable terminals for PC and 2.5 mm jack-plug. Battery or mains operation (mains adapter code no. 6142 not included).

Max. working range: indoor: approx. 50 m (150 ft.), outdoor: approx. 200 m (600 ft.)

Max. sync speed: 1/250 sec. (depending on camera and flash)

Dimensions: transmitter: 40 x 68 x 35 mm (1.6 x 2.7 x 1.4 in.), receiver: 50 x 80 x 25 mm (1.9 x 3.1 x 1 in.)

Weight: transmitter: 35 g, receiver: 53 g



Scope of supply:

- 6126:** „TwinLink T2Di“: transmitter and receiver, PC cord, trigger cable 2.5-3.5, 3.5-6.3 adapter plug, adhesive accessory shoe base, adhesive metal plate, 3 AAA batteries for receiver, 2 CR2032 batteries for transmitter, receiver fixture clip.
- 6127:** „TwinLink T2RxDi“: receiver, extends "TwinLink T2Di", trigger cable 2.5-3.5, 3.5-6.3 adapter plug, adhesive metal plate, 3 AAA batteries, fixture clip.

Important notes

Transmitter T2Tx and receiver T2RxDi from the 6126 (T2Di) and 6127 sets are not compatible with the previous versions (transmitter T2Tx and receiver T2RxDi supplied under code no. 6140 (T2D) and 6141). To find out about correct type designation, please check the label inside the battery compartment.

6142 **Mains Adapter**

For use with the "TwinLink T2RxDi" receiver of the "TwinLink T2Di" flash trigger.





1405
PC-PC Coiled Cord

Spiral cord with male PC plug on both sides to connect flashguns with PC port e.g. for Nikon SB-24, -25, -26, -28, -28 Dx, -80 Dx, -800, -900, -910 and Canon 580 EX II, 600 EX, 600 EX-RT.

Length (extended): 65 cm (25.6 in.)



1407
PC-PC Flash Cable

Flash cable with male PC plug on both sides to connect flashguns with PC outlet to the camera, e.g. Nikon SB-24, -25, -26, -28, -28 Dx, -80 Dx, -800, -900, -910 and Canon 580 EX II, 600 EX, 600 EX-RT.

Length: 5 m (16.4 ft.)



1408-09
Flash Cable

Professional flash connecting cable with spiral coil for pull relief. Signal red, length approx. 10 m (33 ft.).

1408: PC plug and jack plug \varnothing 3.5 mm

1409: PC plug and jack plug \varnothing 6.35 mm



1420-26
Extension Cord

For connecting flash equipment. With right-angle plug and socket (PC).

1420: 0.5 m (1 ft. 8 in.)

1423: 2.0 m (6 ft. 10 in.)

1424: 3.0 m (9 ft. 10 in.)

1425: 5.0 m (16 ft. 5 in.)

1426: 10.0 m (32 ft. 10 in.)

**1512
Clamp**

For simple attachment of flashguns and lightweight lighting units. Removable accessory shoe on ball joint. Tilttable to all sides in infinite steps, lockable in any position. Additional connecting thread 1/4". With reflector umbrella holder \varnothing 9.2 mm. Clamp is impact-resistant plastic with non-slip rubber studs.

Clamp span: max. 40 mm (1.6 in.)
Height: approx. 90 mm (3.5 in.)



**1322
Triple PC Flash Outlet**

For simultaneous use of up to three flash units with standard PC plugs.



**1311
Flash Socket**

Nipple to Standard DIN 19003 (PC) for connecting flash equipment.

Package of 10 pieces.



**1313
Flash Socket Adapter**

For connecting flash equipment with standard PC plugs to Leica cameras of the M1 - M3 series.



**1326
Right Angle Male Plug**

With plug to DIN 19003 (PC) for self-fitting to flash cables. With soldering tags.





1201
Bounce Flash Shoe

For indirect flashing. With ball-and-socket joint for stepless movement in all directions. Accessory shoe detachable. 1/4" mounting thread with lock nut. Reflector umbrella holder 9.2 mm diameter. For fastening to accessory shoe or stands. Stand thread 1/4" with removed slot-on foot 3/8". Accessory foot with fixing screw.

Height: approx. 95 mm (3.7 in.)



1503-04
Remote Flash Trigger

For wireless lag-free firing of a second flash unit. Range up to 20 m (65.6 ft.) depending on the guide number of the flash unit and room brightness. 1/4" tripod bush. Features an additional PC flash terminal to connect another flash unit.

1503: for flash units with standard ISO foot and hot flash contact

1504: for flash units with 4-pin Sony/Minolta foot



1200
Bounce Flash Shoe

For indirect flash illumination. Steplessly adjustable. With 1/4" tripod bush. Fits into accessory shoe or tripods.

Height: approx. 45 mm (1.8 in.)



1216
Mounting Shoe

For mounting flash units on tripods and ball joints. With 1/4" tripod thread.

Height: approx. 12 mm (0.5 in.)

Diameter: approx. 30 mm (1.2 in.)



1211
Accessory Shoe

For mounting flash guns with 1/4" thread. With threaded pin (1/4") and lock nut.

Height: 25 mm (1 in.)

1215
Sony/Minolta Accessory
Shoe Adapter

Enables mechanical connection of accessories with standard ISO foot on cameras with Sony-/Minolta flash shoe. Flexible tongues on both sides provide for tight fit. No electrical contacts for flash units.



1300
Flash Shoe Adapter

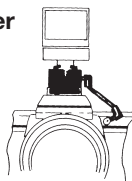


For cameras with hot flash shoe and flash equipment without hot flash shoe. With synchro flash socket.

Height: 16 mm (0.6 in.)



1301
Flash Shoe Adapter

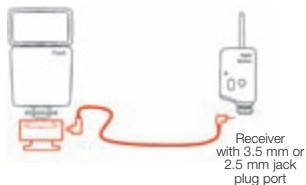


For cameras without hot flash contact and flash equipment with hot flash contact. With approx. 30 cm (11.8 in.) detachable synchro cable, shoe mount and 1/4" tripod bush. Also designed for attaching flash equipment with hot flash contact on tripods.

Height: 16 mm (0.6 in.)



1303
Flash Adapter



For connecting flash guns to receivers of RC remote releases, e.g. Kaiser TwinLink, Pocket Wizard, Skyport, etc. Set consisting of hot shoe adapter with tripod thread and removable synch cord with 3.5 mm jack plug and synch cord with 2.5 mm jack plug.

Length of cables: approx. 30 cm (11.8 in.) respectively.

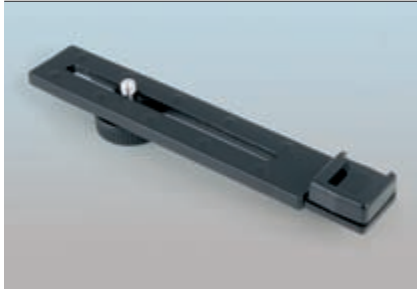


1304
Flash Adapter

For firing flash units with standard ISO foot and center contact mounted on a Sony/Minolta DSLR camera with proprietary 4-pin foot.

Features an additional PC flash terminal to connect another flash unit.

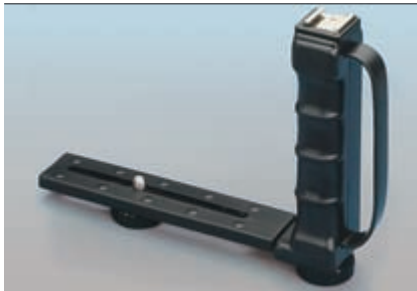




**1000
Flash Bracket**

Light metal bracket with resilient contact surface. Mounting screw with 1/4" thread and tripod bush.

Length: 16.5 cm (6.5 in.),
Width: 2.8 cm (1.1 in.)



**1100
Angle Bracket**

Collapsible. Grip with hand strap. Hinged camera bracket of light metal with resilient contact surface. Mounting screw with 1/4" thread and tripod bush.

Length: approx. 14 cm (5.5 in.)
Width: approx. 2.8 cm (1.1 in.)
Height of grip: approx. 13.5 cm (5.3 in.)



**1107
Angle Bracket**

Collapsible. Hinged camera bracket of light metal with resilient contact surface. Slide-in foot for flash units or video lights. Widened three-point rest on bottom side. Camera with mounted bracket stands firmly on flat surfaces. Mounting screw with 1/4" thread and tripod bush.

Length: approx. 16.2 cm (6.4 in.)
Width: approx. 6.5 cm (2.6 in.)
Height of grip: approx. 15.1 cm (5.9 in.)



**1108
Universal Accessory Bracket**

Two-part angle bracket for mounting accessories such as flashguns, lights, microphones, GPS logger etc. on cameras and camcorders. The bracket can be aligned to the camera in different ways.

Mounting screw with 1/4" thread. Attaches to the tripod mount of the camera or camcorder.

Bracket has a removable securing pin as an anti-twist lock and for precise positioning.

6601-02
„ProDisk“ Calibration Tool

Combination of white balance filter, grey card and colour reference card in a slim, foldable plastic housing. Colour card and grey card located in lower resp. upper cover. Translucent white balance filter with special surface pattern.

Includes neck strap.

6601: ProDisk mini

White balance filter for lenses up to 6 cm (2.4 in.) diameter
Dimensions (folded down): 103 x 73 x 10 mm (4.1 x 2.9 x 0.4 in.)
Weight: 75 g (2.6 oz.)

6602: ProDisk II

White balance filter for lenses up to 9 cm (3.5 in.) diameter
Dimensions (folded down): 145 x 101 x 11 mm (5.7 x 4.0 x 0.5 in.)
Weight: 135 g (4.8 oz.)



6605-11
„Vivicap“ White Balance Filter

Snap-on filter with specially designed prism structured surface for white-balancing of digital cameras and camcorders. Easy to use clamping mechanism provides for quick installation and removal. Serves also as a lens cap and can also be attached when a lens hood is used.

6605: ø 52 mm

6606: ø 55 mm

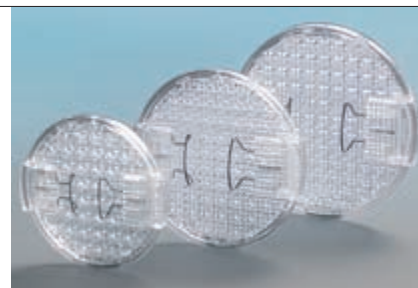
6607: ø 58 mm

6608: ø 62 mm

6609: ø 67 mm

6610: ø 72 mm

6611: ø 77 mm





6494
Memory Card Box

Flat metal box for secure storage of three SD/Multimedia / xD / Memory Stick cards.

Dimensions: approx. 9.5 x 6 x 0.5 cm
(3.7 x 2.4 x 0.2 in.)



6495-96
Memory Card Box

Slim plastic box for secure storage of two SD or CompactFlash memory cards. Shaped rubber insert. Protects against shock, dirt and moisture.

Reliable snap lock.

Dimensions: approx. 9.3 x 6 x 1.3 cm
(3.7 x 2.4 x 0.5 in.)

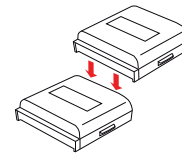
6495: grey

6496: neon yellow



6497
Battery Box

For 4 AA or AAA batteries. 2 pieces.
Stackable. Color: grey and blue.



6389-90
Changing Bag

For working with light-sensitive material where no darkroom is available. Made of special black light-proof fabric with rubber lining. Infrared light-proof. With two hand holes and light-proof zipper.

6389: approx. 68 x 76 cm (26.8 x 29.9 in.)

6390: approx. 40 x 43 cm (15.7 x 16.9 in.)

4129
Film Loader

For loading bulk 35 mm film into cartridges in daylight. For bulk film material up to 30 m (98 ft.). With frame counter and remaining-film meter.

Dimensions: approx. 130 x 110 x 80 mm
(5.1 x 4.3 x 3.1 in.)



4127
Film Cartridges

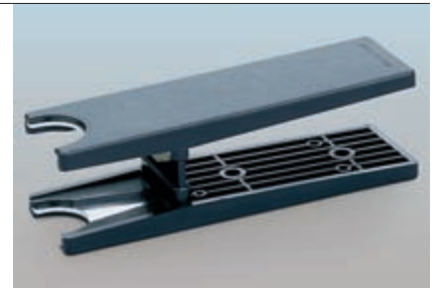
For 35 mm film. For self-loading with bulk film material. Plastic type, 5 pcs.



4125
Film Cartridge Opener

For opening 35 mm film cartridges.

Dimensions: approx. 140 x 40 x 40 mm
(5.5 x 1.6 x 1.6 in.)



4132
Film Leader Retriever

For extracting 35 mm film leader from cartridges into which the film has been wound. Plastic casing with one fixed and one sliding tongue. Simple use.





96653



96654



96657

96653 Video-Transfer

For copying cinefilms (8 mm, 16 mm) and slides on to video. Backprojection screen with fine-grained 100 x 75 mm (3.9 x 3.0 in.) viewing screen. Built-in reversing mirror for true-sided image. Integrated close-up lens with 55 mm (2.2 in.) diameter. Strong table base with adjustable feet and spirit level on base. Stepless height adjustment. Dimensions (BxHxD) approx. 230 x 190 (230) x 142 mm (9.1 x 7.5 (9.1) x 5.6 in.)

96655 Video Transfer Set

Consisting of the video transfer unit 96653, table stand 96654 for the camcorder, filter adapter 96656 for projection lenses from 25 to 62 mm (1 to 2.4 in.) diameter and close-up lens 2 (14249).

96654 Table Stand

Strong table stand with 1/4" mounting thread. For stable positioning of camcorders, particularly when combined with the video transfer unit 96653. Table base with adjustable feet and spirit level in base. Stepless height adjustment from 96 to 136 mm (3.8 x 5.4 in.) Dimensions (BxHxD) approx. 182 x 101 (141) x 117 mm (7.2 x 4 (5.6) x 4.6 in.)

96656 Filter Adapter

For fastening filters and close-up lenses with 49 mm diameter to projection lenses. The filter adapter is simply pressed on. It automatically adapts to lens diameters from 25 mm to 62 mm (1 to 2.4 in.). Only suitable for lenses that project out of the projector casing when in use.

96657 Filter Adapter Set

Consisting of 96656 filter adapter and 14249 close-up lens. Used in conjunction with the video transfer unit (e.g. Art. No. 96653) to copy slides onto video when the slide projector does not focus down to short distances and does not have a filter mount for close-up lenses.