

XEROX®



Stylish, Flat-screen
LCD Monitor

Office Displays

XAP Series

VERSATILE



The new Xerox XAP series succeeds the business blood to integrate all the functions you desire and boost the performance you deserve. **XStand™ offers you the freedom of easy adjustment**; you can tilt, swivel, adjust the height and even pivot the monitor. **XShield™ is as hard as quartz (8H) to protect the panel (2H) from the scratch.** It also improves the display quality and makes colors rich and vivid.

All XAP series displays equip with **digital video interface (DVI)**, maximizing the quality of the image output by combining a premiere-quality LCD panel and high-end video graphics card. Furthermore, **fastest response time, ultra high brightness, contrast and advanced video engine** make the XAP series superior for any professional use. Users who need real-time 3D gaming, video, engineering or professional design applications must be content with the XAP series. It is versatile. It is what you're looking for.

Remarkable Features Deliver Outstanding Performance

The Xerox XAP LCD Series is available in 17" and 19" screen sizes.

XShield™ Protective Glass No More scratched panels

XShield™ provides extra LCD protection with sophisticated visual flair. XShield™ is not only practical to enhance the display quality but a part of stylish design.

Rapid Video Response Live action images stable

Fast action media such as engineering applications, professional design, gaming, DVD and video conferencing will playback smoothly thanks to the very fast video response time of the LCD panel.

Adjustable Ergonomic XStand™ More flexible for the ease of uses

XStand™ is very flexible to make any adjustment comfortable for use. Users can tilt, swivel, pivot and adjust the height of the display. Just accommodate XAP to your habit and preference.

Professional DVI Input Precise colors and fidelity

DVI provides the precise and digital communication to deliver the best display performance. The XAP series has the flexibility to accept both the digital or analog signals.

Anti-Reflection Coating Comfortable viewing experience

The coating on the panel can efficiently reduce distracting glare on images viewed.

Multimedia Enhanced Speakers Enjoyment with media center

It brings multimedia and saves the desktop space. XAP series has two built-in 2w stereo speakers and are well integrated into the stylish design.

Specifications

Configurations



Model No.	XAP-172i	XAP-192i
LCD PANEL		
SIZE	17" TFT LCD	19" TFT LCD
DISPLAY AREA (mm)	337.9x270.3	376.3x301.1
MAX. RESOLUTION	1280x1024	1280x1024
DISPLAY COLORS	16.2M	16.2M
RESPONSE TIME	8ms	8ms
BRIGHTNESS (cd/m ²)	300	300
CONTRAST	800:1	800:1
VIEW ANGLE: H	80/80	80/80
VIEW ANGLE: V	80/80	80/80
DOT PITCH (mm)	0.264x0.264	0.294x0.294
PANEL SURFACE	ANTI-GLARE	ANTI-GLARE
HORIZONTAL FREQ.	30~80KHz	30~80KHz
VERTICAL FREQ.	56~75Hz	56~75Hz
BANDWIDTH (MHz)	135MHz	135MHz
I/O PORT		
COMPATIBILITY	PC/MAC	PC/MAC
ANALOG INPUT	D-SUB	D-SUB
DIGITAL INPUT	DVI-I	DVI-I
PC AUDIO LINE-IN	YES	YES
OTHER SPEC		
PROTECTIVE GLASS	YES	YES
BUILT-IN SPEAKERS	2W x2	2W x2
STAND	HEIGHT ADJUSTABLE	HEIGHT ADJUSTABLE
VESA MOUNT (mm)	75x75	75x75
POWER		
CONSUMPTION	48W	48W
VOLTAGE	AC100-240V/50-60Hz	AC100-240V/50-60Hz
OFF MODE	<= 2W	<= 2W
POWER TYPE	BUILT-IN	BUILT-IN
REGULATION		
	CE, CB, TUV/BAUART, GOST	CE, CB, TUV/BAUART, GOST
PACKING INFO		
MONITOR WxHxD	380x392x205	426x410x205
PACKING WxHxD	435x450x250	485x475x250
NET WEIGHT (KG)	6.6	7.2
GROSS WEIGHT (KG)	7.4	8.1
CONTENTS	AC Power Cord / D-sub Adapter User's Guide CD / Quick Guide / Warranty Card	AC Power Cord / D-sub Adapter User's Guide CD / Quick Guide / Warranty Card



What Advantages XShield™ Can Give?

The glass that XShield™ uses is a kind of anti-reflection technology. It is hi-tech with the chemical coating to reduce the glare and change light beam penetration through the glass to give images and colors nature to life.

- Its hardness is the same as quartz (8H). LCD panel is 2H.
- It is anti-UV light with 96% efficiency.
- The transparency is over 97% and reflection is under only 2%.
- It has the superior grade of resistance to alkali, acid, alcohol and detergents.
- The glass can endure the temperature of 200-250 centigrade degree without deformation.

What a Flexible XStand™ !

The adjustable ergonomic XStand™ meets your request with the possibility and flexibility. You even can pivot the monitor with 90 degrees for a vertical view (portrait orientation) while using desktop publishing, word processing or surfing web pages.



Pivot



Tilt



Swivel



Height Adjustment

NOTE: Pivot function needs additional software to rotate the screen orientation. Some VGA card suppliers bundle the software in the package. (for example: NVIDIA® NVRotate™)

XEROX



Stylish, Flat-screen
LCD Monitor

Office Displays

XA3 Series

A PREMIUM DISPLAY FOR ALL BUDGETS



The XA3 Series LCD monitor is an excellent entry-level monitor offering exceptional display quality at an affordable price. The high-contrast images and vibrant color reproduction bring your work to life. Its stylish thin frame and narrow bezel give the XA3 Series a sleek and elegant look. Solid performance at a great price makes the XA3 Series a wise choice in LCD displays.

The practical XA3 Series LCD monitor delivers the best in design and image quality at a budget-minded price. These stylish displays are equipped with **an energy efficient power supply and auto setup features**. Installation is easy; just plug it in and turn it on.

Available in 15", 17", and 19" screen sizes, the XA3 Series LCD monitor offers a size to fit any need and budget. Driven by the same advanced display technology used in other more expensive displays, the XA3 delivers crisp and clear images for your viewing pleasure.

Remarkable Features Deliver Outstanding Performance

The Xerox XA3 LCD Series is available in 15", 17" and 19" screen sizes.

Rapid Video Response Live action images stable

Fast action media such as gaming, DVD and video conferencing will playback smoothly thanks to the rapid video response time of the LCD panel.

High Contrast Ratio Making colors sharper

Colors will appear vibrant and lifelike producing superior image quality.

Plug-and-Play Capability Delivering ease of use

The display is out of the box and connected to your computer in minutes.




Anti-Reflective Coating More comfortable viewing experience

The coating on the panel can efficiently reduce distracting glare on images viewed.

Wall-Mounting Capability Versatile to set up

It allows this LCD to be used in numerous applications including financial, medical, educational and business uses.

Specifications

Configurations				
Model No.		XA3-15	XA3-17	XA3-19
PANEL				
PANEL SIZE		15" TFT LCD	17" TFT LCD	19" TFT LCD
DISPLAY AREA (mm)		304.0x228.0	337.9x270.3	376.3x301.1
MAX. RESOLUTION		1024x768	1280x1024	1280x1024
DISPLAY COLORS		16.2M	16.2M	16.2M
RESPONSE TIME (ms)		16ms	12ms	16ms
BRIGHTNESS (cd/m ²)		250	300	250
CONTRAST		500:1	500:1	800:1
VIEW ANGLE: H		60/60	70/70	70/70
VIEW ANGLE: V		40/50	70/60	70/65
DOT PITCH (mm)		0.297x0.297	0.264x0.264	0.294x0.294
PANEL SURFACE		ANTI-GLARE	ANTI-GLARE	ANTI-GLARE
HORIZONTAL FREQ.(KHz)		30~60	30~80	30~80
VERTICAL FREQ.(Hz)		60~75	60~75	60~75
STAND				
		PLASTIC	PLASTIC	PLASTIC
COMPATIBILITY				
		PC/MAC/SUN	PC/MAC/SUN	PC/MAC/SUN
SINGAL INPUT				
ANALOG INPUT		D-SUB	D-SUB	D-SUB
DIGITAL INPUT		X	X	X
PC AUDIO LINE-IN		X	X	X
POWER				
CONSUMPTION		36W	48W	48W
VOLTAGE		AC100-240V/50-60Hz	AC100-240V/50-60Hz	AC100-240V/50-60Hz
REGULATION				
		FCC-B, UL/cUL, CE, CB, TUV/GS, VCCI.	FCC-B, UL/cUL	FCC-B, UL/cUL
VESA MOUNT(mm)				
		75x75	75x75	75x75
PACKAGE DIM.				
MONITOR WxHxD(mm)		349x334x172	378x382x192	426x413x210
PACKING WxHxD(mm)		395x425x124	435x495x123	TBD
PACKAGE CONTENTS				
		AC Power Cord User's Guide Warranty Card	AC Power Cord User's Guide Warranty Card	AC Power Cord User's Guide Warranty Card



Slim Profile Design

The XA3 series has a sleek design that maximizes that desktop space while providing excellent video performance.



Narrow Bezel Design

The narrow bezel will allow you to tile multiple displays to increase the amount of information that can be viewed.



Built-in Power Design

The XA3 series has built in power supply eliminating the need for an external power supply.

XEROX



Stylish, Flat-screen
LCD Monitor with
DVI Input

Office Displays

Outside, it's a work of art; inside, it's all business

From its sleek, stealth-like design to its high-resolution images, the Xerox XA7 Series LCD monitor is an overachiever in computer displays. What's immediately noticeable about the Xerox XA7 Series is how well the matte-black slim bezel blends with the background, while incorporating elegantly designed adjustment buttons. What's more appealing to the eye about the Xerox XA7 Series monitor is its amazing image quality. With advance video technologies that deliver bright, crisp graphics, sharp text, and smooth video playback, the XA7 Series is truly a leader in its class.

XA7 Series LCD Display



All Xerox XA7 Series monitors are equipped with digital video interface, or DVI-I, a feature which maximizes the quality of the image output by combining a premiere-quality LCD panel and high-end video graphics cards. DVI-I allows for easy connection between digital video and analog signal graphics cards. Colors are vibrant and rich in contrast and are protected by the Xshield glass filter. Video playback is solid due to the 8 millisecond response time and 800 to 1 contrast ratio. The wide viewing angle is practical when more than one person is viewing the screen at the same time. The Xerox XA7 Series may look like a work of art on the outside but when displaying the best possible image, it's all business.



Specifications



Model	XA7-17i	XA7-172i	XA7-19i	XA7-192i
Panel Size	17"	17"	19"	19"
Display Area (HxV)	13.3"x10.6"	13.3"x10.6"	14.8"x11.6"	14.8"x11.6"
Pixel Pitch	0.264mm	0.264mm	0.294mm	0.294mm
Brightness (typ.)	300 nits	300 nits	250 nits	250 nits
Contrast Ratio (typ.)	500:1	500:1	800:1	800:1
Video Response	12ms	8ms	16ms	8ms
Horizontal Viewing Angle	140°	140°	170°	170°
Vertical Viewing Angle	130°	130°	170°	170°
Optimum Resolution	1280x1024	1280x1024	1280x1024	1280x1024
Display Colors	16.2M	16.2M	16.7M	16.7M
Horizontal Freq.	31 - 80kHz	31 - 80kHz	31 - 80kHz	31 - 80kHz
Vertical Freq.	60 - 75Hz	60 - 75Hz	60 - 75Hz	60 - 75Hz
Bandwidth	135MHz	135MHz	135MHz	135MHz
Compatibility	PC, Mac	PC, Mac	PC, Mac	PC, Mac
Interface	Analog D-Sub / Digital DVI	Analog D-Sub / Digital DVI	Analog D-Sub / Digital DVI	Analog D-Sub / Digital DVI
Power				
Power Supply	Integrated	Integrated	Integrated	Integrated
Standby Consumption	<3W	<3W	<3W	<3W
Maximum Consumption	40W	40W	50W	50W
Dimensions / Weight				
Physical Dimensions (WxDxH)	14.9"x7.5"x14.9"	14.9"x7.5"x14.9"	16.8"x8.3"x16.9"	16.8"x8.3"x16.9"
Packaging (WxDxH)	17.1"x5.5"x19.5"	17.1"x5.5"x19.5"	19.1"x5.5"x20.7"	19.1"x5.5"x20.7"
Net/Gross Weight	8.4lbs. / 9.9lbs	8.4lbs. / 9.9lbs	10.6lbs. / 12.8lbs	10.6lbs. / 12.8lbs
Features				
XShield™ Protective Glass	Yes	Yes	Yes	Yes
Chrome Base	No	No	No	No
Plug & Play	Yes	Yes	Yes	Yes
Auto Adjustment	Yes	Yes	Yes	Yes
Integrated Speakers	No	No	No	No
Control Buttons	4 keys	4 keys	4 keys	4 keys
Tilt Angle	+30° / -5°	+30° / -5°	+30° / -5°	+30° / -5°
Kensington® Lock Port	Yes	Yes	Yes	Yes
VESA® Wall Mount Option	Yes	Yes	Yes	Yes
Regulations	CE, FCC DOC, CCC, CB, UL/CUL, TUV/GS, BSMI, S-Mark			

XEROX®



Stylish, Flat-screen
LCD Monitor

Office Displays

XM3 Series

COST-EFFECTIVE AND WIDE



XM3 series is the best preference to start exploring wide screen. The design philosophy of XM3 series follows our exceptional XA3 series and it offers users a **cost-effective combination of admirable performance and affordable price.**

XM3 series has unique **XInput™ Signal Selection** for the convenience of multiple input sources. The feature allows simultaneous connecting PC and another sources such as DVD, game console or another PC/Note-Book.

It has **1680x1050 wide-screen high resolution to give the additional computing space for use.** How about having MSN® Messenger, Skype™ and word processor side by side then switch them with the ease? How about watching DVD films without distortion? How about browsing two web pages on a single screen? Or, you can switch to the game console and enjoy yourself at once! XM3 series is wide and versatile; it is 100% worth your exploring to have a wide screen from now on!

Remarkable Features Deliver Outstanding Performance



XInput™ Signal Selection

Capable and convenient (**OPTIONAL**)

XInput™ provides one digital and two analog video ports. Users can concurrently have desktop PC and notebook (or another PC) share the same one display then switching the signal by simply pressing the button without removing and attaching cables all the time.



Rapid Video Response

Live action images stable

Fast action media such as gaming, DVD and video conferencing will playback smoothly thanks to the very fast video response time of the LCD panel.



Multimedia Enhanced Speakers

Enjoyment with media center

It brings multimedia and saves the desktop space. XM3 series has two built-in 2w stereo speakers and are well integrated into the stylish design.



HDCP

Solution for HD content (**OPTIONAL**)

HDCP has been implemented across DVI interface. The HDCP specification provides a cost-effective and transparent method for receiving the highest quality digital entertainment content from HDMI compliant video sources.
(Specified for HDCP models)



High Brightness & Contrast

Bringing images to life

Vibrant colors, and dark black levels will improve your graphics, photos, or presentations making them life-like and realistic. High contrast levels further define picture detail providing rich saturated images.



Integrated Power Design

Reducing desktop clutter

The power part is integrated into the whole design and there's no more external power adapter to occupy your desktop space.



16:10 wide screen



4:3 conventional

Wide Vision.



View applications side by side and reduce toggling between them.

Specifications



See more columns in a view.

Complete Enjoyment.

XM3 series perfectly presents the original 16:9 film* details. No more unbearable big black bar.

Configurations

Model No.	XM3-19w	XM3-22w
LCD PANEL		
SIZE	19" WIDE TFT LCD	22" WIDE TFT LCD
DISPLAY AREA (mm)	410.0x256.0	473.76x296.1
MAX. RESOLUTION	1440x900	1680x1050
DISPLAY COLORS	16.2M	16.7M
RESPONSE TIME	5ms	5ms
BRIGHTNESS (cd/m ²)	300	300
CONTRAST	800:1	700:1
VIEW ANGLE: H	85/85	85/85
VIEW ANGLE: V	80/80	80/80
DOT PITCH (mm)	0.285x0.285	0.282x0.282
PANEL SURFACE	ANTI-GLARE	ANTI-GLARE
HORIZONTAL FREQ.	30-82KHz	30-82KHz
VERTICAL FREQ.	56-75Hz	56-76Hz
BANDWIDTH (MHz)	137MHz	146.25MHz
I/O PORT		
COMPATIBILITY	PC/MAC	PC/MAC
ANALOG INPUT	D-SUB x1	D-SUB x2
DIGITAL INPUT	DVI-D (OPTIONAL)	DVI-D (OPTIONAL)
PC AUDIO LINE-IN	YES	YES
OTHER SPEC		
PROTECTIVE GLASS	NO	NO
BUILT-IN SPEAKERS	YES	YES
STAND	Plastic stand	Plastic stand
VESA MOUNT (mm)	75x75	75x75
POWER		
CONSUMPTION	60W	60W
VOLTAGE	AC100-240V- 50-60Hz	AC100-240V- 50-60Hz
OFF MODE	<= 1W	<= 1W
POWER TYPE	BUILT-IN	BUILT-IN
REGULATION		
	FCC, UL/cUL, CE, CB,GOST, TUV/GS,TCO99	FCC, UL/cUL, CE, CB, TUV/GS
PACKING INFO		
MONITOR WxHxD (mm)	458 x 371 x 210 mm	523.7 x 404 x 210 mm
PACKING WxHxD (mm)	532 x487 x140 mm	580 x 500 x 145mm
NET WEIGHT (KG)	4.7kg	5.4kg
GROSS WEIGHT (KG)	6.0kg	6.9kg
CONTENT	AC Power Cord, D-sub Cable, Audio Cable(optional) User's Guide CD, Quick Guide, Warranty Card	AC Power Cord, D-sub Cable, Audio Cable(optional) User's Guide CD, Quick Guide, Warranty Card

NOTE:

To get the effective wide-screen resolution, you need to select the accurate setting in your **Display Property** of Windows® system (in **Control Panels**).

XEROX®



Stylish, Flat-screen
LCD Monitor

Office Displays

XM7 Series

VERSATILE AND WIDE



XM7 series design concept results from our popular XA7 and XAP series. It emphasizes the versatile use and business applications. XM7 series has **XShield optical glass filter to protect the panel with the solid 8H hardness.**

And we'd present you the new unique **XInput Technology.** The feature allows concurrent connecting PC and another sources such as DVD, game console or another PC/NoteBook. You can have a more flexible use of XM7 series and save your investment on displays.

XM7 series has **wide-screen high resolution to give the additional computing space for use.** You can see more columns and rows of the spreadsheet in a view. Put Messenger and word processor side by side with the switching ease. Have more windows to check the stock quotations. With XM7 series, you win the performance desired and deserved!

Remarkable Features Deliver Outstanding Performance

XShield Protective Glass No More scratched panels

XShield provides extra LCD protection with sophisticated visual flair. XShield is as hard as quartz (8H hardness) to protect the panel from scratch and enhance the display quality.

Multimedia Enhanced Speakers Enjoyment with media center

It brings multimedia and saves the desktop space. XM7 series has two built-in 2w stereo speakers and are well integrated into the stylish design.

HDCP Solution for HD content (OPTIONAL)

HDCP has been implemented across DVI interface. The HDCP specification provides a cost-effective and transparent method for receiving the highest quality digital entertainment content from HDMI compliant video sources.
(Specified for HDCP models)

Multiple Input Signal Selection Capable and convenient (OPTIONAL)

XInput provides one digital and two analog video ports. (PC, Notebook, DVD or game console) share the same one display with simple pressing for switching. No more remove and attach cables all the time.

Rapid Video Response Live action images stable

Fast action media such as gaming, DVD and video conferencing will playback smoothly thanks to the very fast video response time of the LCD panel.

High Brightness & Contrast Bringing images to life

Vibrant colors, and dark black levels will improve your graphics, photos, or presentations making them life-like and realistic. High contrast levels further define picture detail providing rich saturated images.

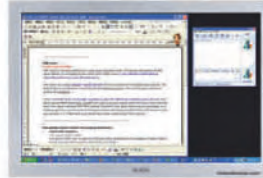


16:10 wide screen



4:3 conventional

Wide Vision.



View applications side by side and reduce toggling between them.

Specifications



See more columns in a view.

Complete Enjoyment.

XM7 series perfectly presents the original 16:9 film* details. No more unbearable big black bar.

Configurations

Model No.	XM7-19w	XM7-22w
LCD PANEL		
SIZE	19" WIDE TFT LCD	22" WIDE TFT LCD
DISPLAY AREA (mm)	410.0x256.0	473.76x296.1
MAX. RESOLUTION	1440x900	1680x1050
DISPLAY COLORS	16.2M	16.7M
RESPONSE TIME	5ms	5ms
BRIGHTNESS (cd/m ²)	300	300
CONTRAST	800:1	700:1
VIEW ANGLE: H	85/85	85/85
VIEW ANGLE: V	80/80	80/80
DOT PITCH (mm)	0.285x0.285	0.282x0.282
PANEL SURFACE	ANTI-GLARE	ANTI-GLARE
HORIZONTAL FREQ.	30~82KHz	30~82KHz
VERTICAL FREQ.	56~75Hz	56~76Hz
BANDWIDTH (MHz)	137MHz	146.25MHz
I/O PORT		
COMPATIBILITY	PC/MAC	PC/MAC
ANALOG INPUT	D-SUB x1	D-SUB x2
DIGITAL INPUT	DVI-D (OPTIONAL)	DVI-D (OPTIONAL)
PC AUDIO LINE-IN	YES	YES
OTHER SPEC		
PROTECTIVE GLASS	YES	YES
BUILT-IN SPEAKERS	YES	YES
STAND	Aluminium stand	Aluminium stand
VESA MOUNT (mm)	75x75	75x75
POWER		
CONSUMPTION	60W	60W
VOLTAGE	AC100-240V~ 50-60Hz	AC100-240V~ 50-60Hz
OFF MODE	<= 1W	<= 1W
POWER TYPE	BUILT-IN	BUILT-IN
REGULATION		
	FCC, UL/cUL, CE, CB,GOST, TUV/BAUART	FCC, UL/cUL, CE, CB, TUV/BAUART
PACKING INFO		
MONITOR WxHxD (mm)	457 x 371 x 210 mm	523.7 x 404.1 x 220mm
PACKING WxHxD (mm)	532 x500 x140 mm	580 x 500 x 145 mm
NET WEIGHT (KG)	4.8kg	6.9kg
GROSS WEIGHT (KG)	5.5kg	8.5kg
CONTENT	AC Power Cord, D-sub Cable, Audio Cable(optional) User's Guide CD, Quick Guide, Warranty Card	AC Power Cord, D-sub Cable, Audio Cable(optional) User's Guide CD, Quick Guide, Warranty Card

NOTE:

- To get the effective wide-screen resolution, you need to select the accurate setting in your **Display Property** of Windows® system (in **Control Panels**).
- Effective wide resolution requests VGA card driver supports the setting in the computing environment. If you can't find an appropriate setting, please contact your VGA supplier to update the driver

XEROX®



Stylish, Flat-screen
LCD Monitor

Office Displays

XM7-20w

VERSATILE AND WIDE



The new Xerox XM7-20w succeeds the business blood to integrate all the functions you desire and boost the performance you deserve. **XShield™ is as hard as quartz (8H) to protect the panel (2H) from the scratch.** It also improves the display quality and makes colors rich and vivid.

The XM7-20w equips with **digital video interface (DVI)**, maximizing the quality of the image output by combining a premiere-quality LCD panel and high-end video graphics card. Furthermore, **super fast response time, ultra high brightness, contrast and advanced video engine** make the XM7-20w superior for any professional use. Users who need real-time 3D gaming, video, engineering or professional design applications must be content with the XM7-20w. It is versatile. It is what you're looking for.

Remarkable Features Deliver Outstanding Performance



XShield Protective Glass No More scratched panels

XShield provides extra LCD protection with sophisticated visual flair. XShield is as hard as quartz (8H hardness) to protect the panel from scratch and enhance the display quality.



Multimedia Enhanced Speakers Enjoyment with media center

It brings multimedia and saves the desktop space. XM7 series has two built-in 2w stereo speakers and are well integrated into the stylish design.



HDCP Solution for HD content (Optional)

HDCP has been implemented across DVI interface. The HDCP specification provides a cost-effective and transparent method for receiving the highest quality digital entertainment content from HDMI compliant video sources.
(Specified for DVI model)



Multi-Input Signal Selection Capable and convenient

Multi-Input provides one digital and two analog video ports. (PC, Notebook, DVD or game console) share the same one display with simple pressing for switching. No more remove and attach cables all the time.



Rapid Video Response Live action images stable

Fast action media such as gaming, DVD and video conferencing will playback smoothly thanks to the very fast video response time of the LCD panel.



High Brightness & Contrast Bringing images to life

Vibrant colors, and dark black levels will improve your graphics, photos, or presentations making them life-like and realistic. High contrast levels further define picture detail providing rich saturated images.

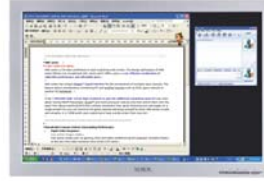


16:10 wide screen



4:3 conventional

Wide Vision.



View applications side by side and reduce toggling between them.

Specifications



See more columns in a view.

Complete Enjoyment.

XM7-20w perfectly presents the original 16:9 film* details. No more unbearable big black bar.

Configurations

Model No.	XM7-20w		
LCD Panel			
LCD PANEL SIZE	20" WIDE LCD	20" WIDE LCD	20" WIDE LCD
DISPLAY AREA (mm)	433.4x270.9	433.4x270.9	433.4x270.9
MAX. RESOLUTION	1680x1050	1680x1050	1680x1050
DISPLAY COLORS	16.7M	16.7M	16.7M
RESPONSE TIME	5ms	5ms	5ms
BRIGHTNESS (cd/m ²)	300	300	300
CONTRAST	1000:1/3000:1(Dynamic)	1000:1/3000:1(Dynamic)	1000:1/3000:1(Dynamic)
VIEW ANGLE: H	85/85	85/85	85/85
VIEW ANGLE: V	85/75	85/75	85/75
DOT PITCH (mm)	0.258x0.258	0.258x0.258	0.258x0.258
PANEL SURFACE	ANTI-GLARE	ANTI-GLARE	ANTI-GLARE
HORIZONTAL FREQ.	30~82KHz	30~82KHz	30~82KHz
VERTICAL FREQ.	56~76Hz	56~76Hz	56~76Hz
BANDWIDTH (MHz)	146MHz	146MHz	146MHz
I/O PORT			
COMPATIBILITY	PC/MAC/VISTA READY	PC/MAC/VISTA READY	PC/MAC/VISTA READY
ANALOG INPUT	D-SUB x1	D-SUB x2	D-SUB x2
DIGITAL INPUT	NO	NO	DVI-D
PC AUDIO LINE-IN	YES	YES	YES
OTHER SPEC			
PROTECTIVE GLASS	YES	YES	YES
BUILT-IN SPEAKERS	YES	YES	YES
STAND	ALUMINIUM	ALUMINIUM	ALUMINIUM
WALL MOUNT (mm)	75x75	75x75	75x75
POWER			
CONSUMPTION	60W	60W	60W
VOLTAGE	AC100-240V~ 50-60Hz	AC100-240V~ 50-60Hz	AC100-240V~ 50-60Hz
OFF MODE	<= 1W	<= 1W	<= 1W
POWER TYPE	BUILT-IN	BUILT-IN	BUILT-IN
REGULATION			
	FCC, UL/cUL, CE, CB, TUV/BAUART	FCC, UL/cUL, CE, CB, TUV/BAUART	FCC, UL/cUL, CE, CB, TUV/BAUART
PACKING INFO			
MONITOR WxHxD (mm)	480x421x212	480x421x212	480x421x212
PACKING WxHxD (mm)	560x467x187	560x467x187	560x467x187
NET WEIGHT (KG)	6.9kg	6.9kg	6.9kg
GROSS WEIGHT (KG)	8.5kg	8.5kg	8.5kg
CONTENT	AC Power Cord, D-sub Cable, Audio Cable, User's Guide CD, Quick Guide, Warranty Card		

NOTE:

- To get the effective wide-screen resolution, you need to select the accurate setting in your **Display Property** of Windows® system (in **Control Panels**).
- Effective wide resolution requests VGA card driver supports the setting in the computing environment. If you can't find an appropriate setting, please contact your VGA supplier to update the driver
- The height adjustable stand is optional & shipped by the individual box.

XEROX[®]



Stylish, Flat-screen
LCD Monitor

Office Displays

XM7-22w

OUTSIDE, IT'S A WORK OF ART; INSIDE, IT'S ALL BUSINESS



The XM7-22w design concept emphasizes the versatile use and business applications. Its multiple input signal selection allows concurrent connecting PC and another sources such as DVD, game console or another PC/NoteBook. You can have a more flexible use of XM7-22w and save your investment on displays.

The XM7-22w is equipped with **digital video interface (DVI)**, a feature which maximizes the quality of the image output by combining a premiere-quality LCD panel and high-end video graphics card. Colors are vibrant and rich in contrast and are protected by **XShield optical glass filter**. The XM7-22w may look like a work of art on the outside but when displaying the possible image, it's all business.

Remarkable Features Deliver Outstanding Performance



XShield Protective Glass No More scratched panels

XShield provides extra LCD protection with sophisticated visual flair. XShield is as hard as quartz (8H hardness) to protect the panel from scratch and enhance the display quality.



Multimedia Enhanced Speakers Enjoyment with media center

It brings multimedia and saves the desktop space. XM7 series has two built-in 2w stereo speakers and are well integrated into the stylish design.



HDCP Solution for HD content (Optional)

HDCP has been implemented across DVI interface. The HDCP specification provides a cost-effective and transparent method for receiving the highest quality digital entertainment content from HDMI compliant video sources.
(Specified for DVI model)



Multi-Input Signal Selection Capable and convenient

Multi-Input provides one digital and two analog video ports. (PC, Notebook, DVD or game console) share the same one display with simple pressing for switching. No more remove and attach cables all the time.



Rapid Video Response Live action images stable

Fast action media such as gaming, DVD and video conferencing will playback smoothly thanks to the very fast video response time of the LCD panel.



High Brightness & Contrast Bringing images to life

Vibrant colors, and dark black levels will improve your graphics, photos, or presentations making them life-like and realistic. High contrast levels further define picture detail providing rich saturated images.

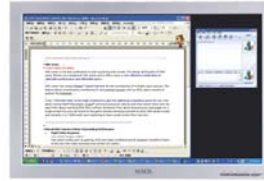


16:10 wide screen



4:3 conventional

Wide Vision.



View applications side by side and reduce toggling between them.

Specifications



See more columns in a view.

Complete Enjoyment.

XM7-22w perfectly presents the original 16:9 film* details. No more unbearable big black bar.

Configurations

Model No.	XM7-22w	
LCD Panel		
LCD PANEL SIZE	22" WIDE LCD	22" WIDE LCD
DISPLAY AREA (mm)	464.94x290.59	464.94x290.59
MAX. RESOLUTION	1680x1050	1680x1050
DISPLAY COLORS	16.7M	16.7M
RESPONSE TIME	5ms	5ms
BRIGHTNESS (cd/m ²)	300	300
CONTRAST	1000:1/3000:1(Dynamic)	1000:1/3000:1(Dynamic)
VIEW ANGLE: H	85/85	85/85
VIEW ANGLE: V	80/80	80/80
DOT PITCH (mm)	0.277x0.277	0.277x0.277
PANEL SURFACE	ANTI-GLARE	ANTI-GLARE
HORIZONTAL FREQ.	30~82KHz	30~82KHz
VERTICAL FREQ.	56~76Hz	56~76Hz
BANDWIDTH (MHz)	146MHz	146MHz
I/O PORT		
COMPATIBILITY	PC/MAC/VISTA READY	PC/MAC/VISTA READY
ANALOG INPUT	D-SUB x2	D-SUB x2
DIGITAL INPUT	NO	DVI-D
PC AUDIO LINE-IN	YES	YES
OTHER SPEC		
PROTECTIVE GLASS	YES	YES
BUILT-IN SPEAKERS	YES	YES
STAND	ALUMINIUM	ALUMINIUM
WALL MOUNT (mm)	75x75	75x75
POWER		
CONSUMPTION	60W	60W
VOLTAGE	AC100-240V~ 50-60Hz	AC100-240V~ 50-60Hz
OFF MODE	<= 1W	<= 1W
POWER TYPE	BUILT-IN	BUILT-IN
REGULATION		
	FCC, UL/cUL, CE, CB, TUV/BAUART	FCC, UL/cUL, CE, CB, TUV/BAUART
PACKING INFO		
MONITOR WxHxD (mm)	523.7 x 404.1x 220	523.7 x 404.1x 220
PACKING WxHxD (mm)	580 x 500 x 145	580 x 500 x 145
NET WEIGHT (KG)	6.9kg	6.9kg
GROSS WEIGHT (KG)	8.5kg	8.5kg
CONTENT	AC Power Cord, D-sub Cable, Audio Cable, User's Guide CD, Quick Guide, Warranty Card	AC Power Cord, D-sub Cable, Audio Cable, User's Guide CD, Quick Guide, Warranty Card

NOTE:

- To get the effective wide-screen resolution, you need to select the accurate setting in your **Display Property** of Windows® system (in **Control Panels**).
- Effective wide resolution requests VGA card driver supports the setting in the computing environment. If you can't find an appropriate setting, please contact your VGA supplier to update the driver
- The height adjustable stand is optional & shipped by the individual box.

XEROX®



Stylish, Flat-screen
LCD Monitor

Office Displays

XM7-24w

WIDE VISION AND FAST PACE



From its sleek, stealth-like design to its high-resolution images, the XM7-24w LCD display is an overachiever in computer displays. What's immediately noticeable about the XM7-24w is how well the matte black slim bezel blends with the background, while incorporating elegantly designed adjustment buttons. With **advance video technologies** that deliver bright, crisp graphic, sharp text, and smooth video playback, the XM7-24w is truly a leader in its class.

The XM7-24w has **wide-screen high resolution to give the additional computing space for use**. You can see more columns and rows of the spreadsheet in a view. Put Messenger and word processor side by side with the switching ease. Have more windows to check the stock quotations. With XM7-24w, you win the performance desired and deserved.

Remarkable Features Deliver Outstanding Performance



XShield Protective Glass No More scratched panels

XShield provides extra LCD protection with sophisticated visual flair. XShield is as hard as quartz (8H hardness) to protect the panel from scratch and enhance the display quality.



Multimedia Enhanced Speakers Enjoyment with media center

It brings multimedia and saves the desktop space. XM7 series has two built-in 2w stereo speakers and are well integrated into the stylish design.



HDCP Solution for HD content (Optional)

HDCP has been implemented across DVI interface. The HDCP specification provides a cost-effective and transparent method for receiving the highest quality digital entertainment content from HDMI compliant video sources.
(Specified for DVI model)



Multi-Input Signal Selection Capable and convenient

Multi-Input provides one digital and two analog video ports. (PC, Notebook, DVD or game console) share the same one display with simple pressing for switching. No more remove and attach cables all the time.



Rapid Video Response Live action images stable

Fast action media such as gaming, DVD and video conferencing will playback smoothly thanks to the very fast video response time of the LCD panel.



High Brightness & Contrast Bringing images to life

Vibrant colors, and dark black levels will improve your graphics, photos, or presentations making them life-like and realistic. High contrast levels further define picture detail providing rich saturated images.

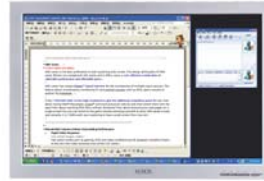


16:10 wide screen



4:3 conventional

Wide Vision.



View applications side by side and reduce toggling between them.

Specifications



See more columns in a view.

Complete Enjoyment.

XM7-24w perfectly presents the original 16:9 film* details. No more unbearable big black bar.

Configurations

Model No.	XM7-24w	
LCD Panel		
LCD PANEL SIZE	24" WIDE LCD	24" WIDE LCD
DISPLAY AREA (mm)	518.4x324	518.4x324
MAX. RESOLUTION	1920x1200	1920x1200
DISPLAY COLORS	16.7M	16.7M
RESPONSE TIME	5ms	5ms
BRIGHTNESS (cd/m ²)	400	400
CONTRAST	800:1/2000:1(Dynamic)	800:1/2000:1(Dynamic)
VIEW ANGLE: H	80/80	80/80
VIEW ANGLE: V	80/80	80/80
DOT PITCH (mm)	0.270x0.270	0.270x0.270
PANEL SURFACE	ANTI-GLARE	ANTI-GLARE
HORIZONTAL FREQ.	30~94KHz	30~94KHz
VERTICAL FREQ.	56~76Hz	56~76Hz
BANDWIDTH (MHz)	166MHz	166MHz
I/O PORT		
COMPATIBILITY	PC/MAC/VISTA READY	PC/MAC/VISTA READY
ANALOG INPUT	D-SUB x2	D-SUB x2
DIGITAL INPUT	NO	DVI-D
PC AUDIO LINE-IN	YES	YES
OTHER SPEC		
PROTECTIVE GLASS	YES	YES
BUILT-IN SPEAKERS	YES	YES
STAND	ALUMINIUM	ALUMINIUM
WALL MOUNT (mm)	100x100	100x100
POWER		
CONSUMPTION	60W	60W
VOLTAGE	AC100-240V ~ 50-60Hz	AC100-240V ~ 50-60Hz
OFF MODE	<= 2W	<= 2W
POWER TYPE	BUILT-IN	BUILT-IN
REGULATION		
	FCC, UL/cUL, CE, CB, TUV/BAUART	FCC, UL/cUL, CE, CB, TUV/BAUART
PACKING INFO		
MONITOR WxHxD (mm)	573.4 x 447x 218.9	573.4 x 447x 218.9
PACKING WxHxD (mm)	660 x 528 x 204	660 x 528 x 204
NET WEIGHT (KG)	8.84kg	8.84kg
GROSS WEIGHT (KG)	9.82kg	9.82kg
CONTENT	AC Power Cord, D-sub Cable, Audio Cable, User's Guide CD, Quick Guide, Warranty Card	AC Power Cord, D-sub Cable, Audio Cable, User's Guide CD, Quick Guide, Warranty Card

NOTE:

- To get the effective wide-screen resolution, you need to select the accurate setting in your **Display Property** of Windows® system (in **Control Panels**).
- Effective wide resolution requests VGA card driver supports the setting in the computing environment. If you can't find an appropriate setting, please contact your VGA supplier to update the driver
- The height adjustable stand is optional & shipped by the individual box.

Copyright © 2007PTI. All rights reserved. Contents of this publication may not be reproduced in any form without the expressed permission of PTI. XEROX® is a registered trademark of Xerox Corporation and is used under license in the US and / or other countries by PTI.

All other trademarks are the property of their respective owners. All information in this publication is subject to change without notice.