

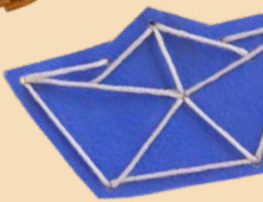


STAEDTLER®



**FIMO**®

M A D E *b y*  
Y O U ♥



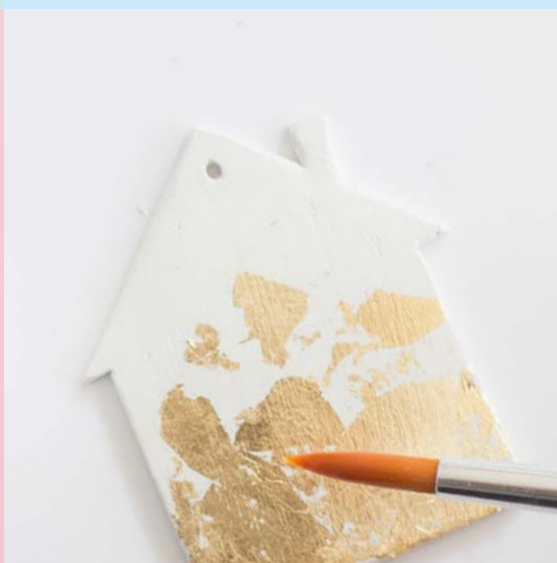
# CREATIVE IDEAS

Catalogue Modelling





M A D E *b y*  
Y O U ♥



With **FIMO® kids** (p. 16 ff.) easy modelling is guaranteed! It is **particularly smooth, easy to shape** and available in a wide variety of bright colours. This modelling clay lets the young artists run free with their imagination and create their own toys.



With **FIMO® soft** (p. 34 ff.) you can turn your ideas into reality. The modelling clay is ready to use and easy to blend – **ideal for beginners and hobby artists**. Easily workable, it has **24 brilliant colours** for you to work with!

**FIMO® effect** (p. 42 ff.) gives your artwork that certain something: your creation will **shine, shimmer and sparkle**. Available in a **variety of different shades and effects** like nightglow or gemstone, this opens up a whole world of stunning options.



**FIMO® liquid** (p. 45) is an oven-hardening gel, suitable for **beginners as well as for more advanced users**. It has a thick and fluid consistency. After hardening, it is extremely flexible. FIMO liquid comes with a practical dosage tip for **pinpoint application and clean handling**. It is available in different colours like gold, silver, black and also in transparent. It is compatible with FIMO soft, FIMO effect, FIMO leather-effect and FIMO professional.

With **FIMO® leather-effect** (p. 46 ff.) you can create projects with a **leather-like look!** As the texture and colour palette of FIMO leather-effect are reminiscent of real leather. After hardening, the clay stays flexible and can be cut, sewn and embossed. **12 strong colours** invite to create and try out.





**FIMO® tools** (p. 54 ff.) help you take your creations to the next level: with these you can easily embellish your artworks, create **unique details** as well as original **patterns and designs**. We offer you modelling tools and acrylic rollers, moulds and varnishes as well as a large selection of creative items.

**FIMO®air** (p. 80 ff.) is particularly easy to work with because it is not fired in an oven – **it air dries**. Even after that, you can continue to process your creation by **sanding, drilling, filing, painting or polishing** it.



**FIMO® professional** (p. 70 ff.) is the clay for meeting the highest requirements of professionals, artists and advanced clay users. Its firm consistency allows **detailed** working and guarantees **dimensional stability**.

**FIMO® professional doll art** (p. 74 f.) is specifically suitable for **filigree doll and sculpture modelling** – thanks to its very high dimensional stability. The modelling clay is ideal for adding parts and smoothing over joints. Due to the special formula with excellent opacity, **6 natural skin tones** can be used to create enchanting miniature faces. The colours can be mixed perfectly to give the modelled faces lifelike character with **semimatt porcelain finish**.



# Tips & Tricks

## for working with FIMO® (oven-hardening)



### The right working surface

You can use a range of working surfaces for FIMO: **tiles**, **glass sheets** or **backing paper**. These surfaces ensure that no unwanted patterns are created on the FIMO as you work. They are also particularly easy to remove the modelling clay from.

### Keeping hands and work surfaces clean

It is best to clean your hands and work surfaces with a **damp cloth**. This is gentle on the skin (particularly if you have been doing a lot of work with FIMO) and removes dust and dirt, to prevent them from being transferred to the modelling clay.



### The best way to store FIMO®

If you have FIMO left over after crafting, it can be stored and **reused**. Oven-hardening FIMO must be stored in a **dust free** but **not airtight** environment. Storage should also protect against heat and sun. We recommend you store FIMO in a **cool, dry place** in **aluminium foil** or **plastic bags**, avoiding contact with polystyrene, PVC or styrofoam.



## Creating accents with structured surfaces

Using **texture sheets or simple everyday objects** like a sponge, a lace doily or a leaf, great patterns can be created onto the modelled sheet. Just lay it on, press gently and carefully pull it off.

## Marbling

By **twisting and kneading** different colours together, great marble effects can be created. The classic modern trend can be applied to FIMO models easily and create a very special look.



## Mix colours

By **mixing FIMO colours together**, new and individual colours can be created. The FIMO blocks are divided into 8 portions, which makes the mixing of individual colours very easy.

## Colour gradients

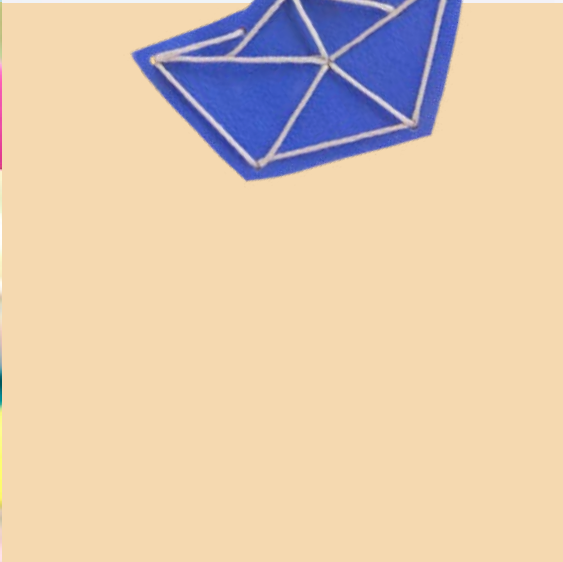
Colour gradients can also be made very easily by using different coloured FIMO clays. This effect gives the creations **depth and a special look**. Whether striking or subtle – the gradients can be designed individually.



## Embellishing

With leaf metal, gloss or matt varnishes you can easily achieve stunning effects. After hardening your creation in the oven simply apply some size for leaf metal with a brush and carefully press the leaf metal onto the FIMO. Afterwards seal it with gloss varnish. Using **light and gloss effects** to create **shimmering accents** makes your FIMO creation an eye-catcher.

Find even more tips  
under [www.fimo.com](http://www.fimo.com)

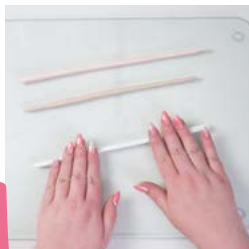




Made for creative bloomers!

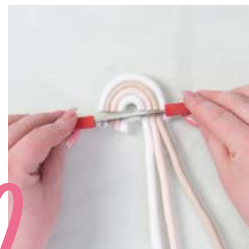


# >>Upcycling DIY flower pot<<



1.

Roll half a block each of FIMO soft in "white", "pale pink" and "sahara" into long cords (approx. 30 cm long).



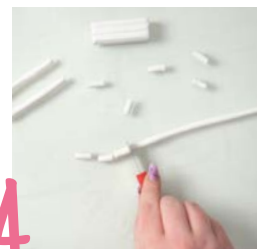
2.

Make your rainbow by shaping the white FIMO cord into a "U". Position the FIMO soft "sahara" cord underneath it, followed by the cord in "flesh light" and "white". Cut off the surplus ends at the bottom edges of the rainbow using the blade.



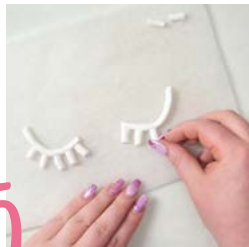
3.

Create several rainbows like this and place them directly on the terracotta pot. It also looks pretty if you add little dots of FIMO in between.



4.

Roll some FIMO soft white into a long cord. Cut off two pieces and form them each into a shallow "U" shape.



5.

Now add several smaller pieces of the FIMO cord and press down.



6.

Roll some FIMO soft sahara into a long cord. Print out the template and shade over the reverse side of the paper with a soft pencil.



7.

Now go over the lines with an HB pencil to transfer the design to your flower pot.



8.

Position the FIMO cords on the lines you have traced and press down. Now harden all your terracotta pots with FIMO decorations for 30 minutes in a preheated oven at 110 °C / 230 °F on upper and lower heat.

**Tip:** If the FIMO won't stick to the terracotta pot after hardening, simply attach your design using superglue.

## MATERIALS

- 1 block FIMO soft "white" 8020-0
- 1 block FIMO soft "pale pink" 8020-43
- 1 block FIMO soft "sahara" 8020-70
- FIMO blade set 8700 04
- Plant pot
- Super glue

level crafting time 110 °C



easy



ca. 30 min



30 min

Find the full tutorial here:



[www.fimo.com](http://www.fimo.com)



@fimostaedler



# FIMO® SOFT – FUN FOR CREATIVE USERS



FIMO® soft

## STANDARD BLOCK 8020-..

57 g, 55 x 55 x 15 mm, segmented into 8 portions, 30 vibrant colours, min. order quantity: 6



### Product information

- Oven-hardening modelling clay
- Perfect for beginners and hobby artists
- Soft and smooth
- 30 vibrant colours
- Practical division into 8 portions for easy blending
- Compatible with FIMO effect, FIMO leather-effect and FIMO professional
- Easy to open

- Infinitely versatile: for jewellery, accessories and home deco items
- Extensive range of blocks, sets and accessories

#### Colour display:

- Comprising 4 feed trays
- Comprising 6 feed trays
- 1 compartment for presentation of brochures, flyers or give-aways

- Showcase for presenting finished sample "Monstera Leaf"
- Intelligent, modular snap-in design
- 24 FIMO soft colours
- 288 blocks à 57 g
- Display inlay
- 1 Colour label

0	white	
10	lemon	
24	indian red	
35	windsor blue	
42	tangerine	
53	tropical green	
62	lavender	
75	chocolate	
105	vanilla	
405	peach	

7	caramel	
16	sunflower	
26	cherry red	
37	pacific blue	
43	pale pink	
56	emerald	
63	plum	
76	cognac	
205	rosé	
505	mint	

9	black	
22	raspberry	
33	brilliant blue	
39	peppermint	
50	apple green	
61	purpure	
70	sahara	
80	dolphin grey	
305	aqua	
605	lilac	

Perfectly suited for trendy fashion accessoires and jewellery!



NEW!



Trend colours 2022/2023



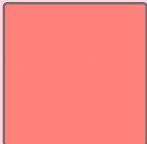
8020-T10  
mango caramel



8020-T30  
morning breeze



8020-T60  
blueberry shake



8020-T20  
pink grapefruit



8020-T50  
pistachio nut



8020-T80  
stormy grey

NEW!



FIMO® soft  
**COLOUR DISPLAY  
8020 T22CA**

Content: 72 blocks à 57 g, 6 colours,  
dimensions: w365 x d250 x h 290 mm  
(with. topper, h 160 mm),  
min. order quantity: 1



NEW!



FIMO® soft  
**COLOUR PACK 'TREND COLOURS'  
8023 C8-1P**

Content: 8 half blocks (white, sahara, mango  
caramel, pink grapefruit, blueberry shake, morning  
breeze, pistachio nut, stormy grey), 1 bracelet,  
instructions, min. order quantity: 1





FIMO brochure trend colours with tips & techniques, Issue 2  
14,8cm x 21cm, 24 pages

art. no. 0V080U6000



FIMO soft trend colours tear-off pad for the POS, Twisted Hoops  
art. no. 0V080W0

FIMO soft trend colours tear-off pad for the POS, flowerprint earrings & key tags  
art. no. 0V080V0



FIMO trend colours give-away  
art. no. 0M080H3600





Large block:  
in 11 vibrant  
colours!

FIMO® soft

**LARGE BLOCK  
8021-..**

454 g (1 lb), with portioning aid,  
11 vibrant colours:  
-0, -16, -2, -24, -26, -33,  
-42, -43, -53, -75, -9,  
min. order quantity: 1

0 white		2 christmas red	
9 black		16 sunflower	
24 indian red		26 cherry red	
33 brilliant blue		42 tangerine	
43 pale pink		53 tropical green	
75 chocolate			

Customise me!  
Find out more about our customisable  
FIMO displays from p. 88!

FIMO® soft

**COLOUR DISPLAY  
8020 VS**

Content: 288 blocks à 57 g, 24 colours,  
dimensions (with topper): approx. w 445 x d 400 x h 480 mm,  
min. order quantity: 1





FIMO® soft

**COLOUR PACK 'BASIC COLOURS'**  
**8023 C12-1**

Content: 12 half blocks à 25 g (white, lemon, raspberry, indian red, brilliant blue, peppermint, tangerine, tropical green, plum, caramel, dolphin grey, black), instructions, min. order quantity: 1



FIMO® soft

**COLOUR PACK 'BASIC COLOURS'**  
**8023 C24-1**

Content: 24 half blocks à 25 g (white, lemon, sunflower, tangerine, indian red, cherry red, raspberry, pale pink, purple, lavender, plum, windsor blue, brilliant blue, pacific blue, peppermint, emerald, tropical green, apple green, light flesh, sahara, caramel, chocolate, dolphin grey, black), instructions, min. order quantity: 1



FIMO® soft

**COLOUR PACK 'BRILLIANT COLOURS'**  
**8023 C12-2**

Content: 12 half blocks à 25 g (white, lemon, indian red, pacific blue, peppermint, pink grapefruit, tangerine, apple green, emerald, purple, lavender, stormy grey), instructions, min. order quantity: 1





FIMO® soft

**COLOUR PACK 'PASTEL COLOURS'**  
**8023 C12-3**

Content: 12 half blocks à 25 g (white, pastel vanilla, pistachio nut, pastel rosé, pastel aqua, pastel peach, pale pink, pastel mint, pastel lilac, sahara, dolphin grey, morning breeze), instructions, min. order quantity: 1



FIMO® soft

**COLOUR PACK 'NATURAL COLOURS'**  
**8023 C12-4**

Content: 12 half blocks à 25 g (white, sunflower, cherry red, windsor blue, tangerine, pale pink, pistachio nut, sahara, chocolate, cognac, dolphin grey, black), instructions, min. order quantity: 1



FIMO® soft

**COLOUR PACK 'FASHION COLOURS'**  
**8023 C12-5**

Content: 12 half blocks à 25 g (metallic mother-of-pearl, metallic gold, metallic rosé gold, metallic copper, mango caramel, morning breeze, pink grapefruit, pistachio nut, blue berry shake, stormy grey, pearl light silver, pearl black), instructions, min. order quantity: 1



The ideal set for  
beginners



FIMO® soft

### BASIC SET 8023 10

Content: 9 half blocks à 25 g,  
1 bottle of gloss varnish, modelling  
stick, work sheet, instructions,  
min. order quantity: 1



Ideal for art, leisure and hobby  
as well as for educational  
purposes, for example in schools and  
similar organizations!



FIMO® soft

### CLASS PACK 8023 50 LX

Content: 26 blocks à 57 g in 11 different colours, 10  
modelling sticks, 4 rubber bands, directions for use  
and modelling instructions,  
min. order quantity: 4





# FIMO® EFFECT – EXQUISITE EXTENSION TO THE RANGE

## Product information

- Oven-hardening modelling clay
- Effective addition to FIMO soft, FIMO leather-effect and FIMO professional
- Right degree of hardness for the respective effect
- 36 colours, 8 different effects (neon black light, nightglow, glitter, translucent, stone, metallic, gemstone, pearl)
- Practical division into 8 portions for easy blending
- Easy to open
- Infinitely versatile: for jewellery, accessories and home deco items

### Colour display:

- Comprising 6 feed trays
- 1 compartment for presentation of brochures, flyers or give-aways
- Showcase for presenting finished sample "crystal"
- Intelligent, modular snap-in design
- 24 FIMO effect colours
- 288 blocks à 57 g
- Display inlay
- 1 Colour label

### Neon display:

- Comprising 6 feed trays
- 1 compartment for presentation of brochures, flyers or give-aways
- Intelligent, modular snap-in design which can be easily combined with other FIMO colour displays
- 72 blocks à 57 g
- Display inlay
- 1 Colour label

## Similar hardness to FIMO soft

## Similar hardness to FIMO professional

The perfect addition to FIMO soft, FIMO professional and FIMO leather-effect!



**NIGHTGLOW**  
Fluorescent, highly luminous colour



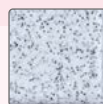
**TRANSLUCENT**  
Colours for translucent objects



**GLITTER**  
Various colours for items in glitter look



**METALLIC**  
Colours with exquisite metallic effects thanks to miniature particles



**STONE**  
Colours for an extraordinary stone appearance



**PEARL**  
Colours with a sophisticated pearly lustre



**NEON**  
Luminous neon colours with a particularly bright black light effect



**GEMSTONE**  
Gemstone colours with fascinating dual effect – transparent and pearl



FIMO® effect

**STANDARD BLOCK**  
8010-.. / 8020-..



57 g, 55 x 55 x 15 mm,  
segmented into 8 portions,  
36 colours, min. order quantity: 6

**GLITTER COLOURS**

052		112		202	
white		gold		red	
302		602		812	
blue		purple		silver	

**TRANSLUCENT COLOURS**

014		104		204	
translucent		yellow		red	
374		504		604	
blue		green		purple	

**GEMSTONE COLOURS**

106		206		286	
citrine quartz		rose quartz		ruby quartz	
306		386		506	
blue ice quartz		agate blue		jade	

**NEON COLOURS**

101		201		301	
neon yellow		neon pink		neon blue	
401		501		601	
neon orange		neon green		neon purple	

**METALLIC COLOURS**

08		11		27	
mother-of-pearl		gold		copper	
28		81			
ruby red		silver			

**PEARL COLOURS**

207		607	
rosé gold		lilac	
817		907	
light silver		black	

**STONE COLOURS**

803	
granite	
903	
stardust	

**NIGHTGLOW COLOUR**

04	
nightglow	

# FIMO® LEATHER-EFFECT

The perfect product to realise new and innovative ideas:  
After hardening, the surface and haptic is similar to leather.  
Create your dream leather projects with 12 trendy colours.

Looks like leather, feels like leather – but it is FIMO leather-effect!

## Product information

- Innovative oven-hardening modelling clay
- Makes extraordinary creative ideas and modelling techniques possible
- 12 attractive colours
- Effective addition to FIMO soft, FIMO effect and FIMO professional
- Soft and smooth clay
- Practical division into 8 portions for easy blending
- Easy to open
- After hardening the surface and haptic is similar to leather
- Thin surfaces are cuttable, punchable and sewable
- Infinitely versatile: for jewellery, accessories and home deco items
- Dermatologically tested

The real deal: form, cut, bend, sew and texturize however you want to!



## >>Bow pin<<

This cute accessory will dress up any hairstyle!



### MATERIALS

- 1 block FIMO leather-effect "watermelon" 8010-249
- Acrylic roller 8700 05
- Lumacolor non-permanent marker 311-9 S
- Template (download online)
- Super glue like Pattex ULTRA GEL
- Scissors, pin

Find the full tutorial here:

[www.fimo.com](http://www.fimo.com) @fimostaedtlr

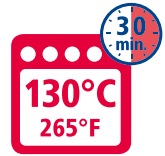
level **crafting time** 130 °C  
 easy ca. 20 min 30 min



FIMO® leather-effect

**STANDARD BLOCK  
8010-..**

57 g, 55 x 55 x 15 mm,  
segmented into 8 portions,  
12 vibrant colours,  
min. order quantity: 6



Limitless ideas:  
combine and mix all colours!

029	
ivory	
229	
berry	
369	
lagoon	
779	
nut	

109	
saffron yellow	
249	
watermelon	
519	
olive	
809	
dove grey	

179	
ochre	
309	
indigo	
749	
rust	
909	
black	



FIMO® leather-effect

**COLOUR PACK  
8013 C12-2**

Content: 12 half blocks à 25 g (ivory, saffron yellow, ochre, berry, watermelon, indigo, lagoon, olive, rust, nut, dove grey, black), instructions, min. order quantity: 1



FIMO® leather-effect

**TOOL BOX  
8019 01**

Content: 1 block à 42 g (white), 5 blocks à 25 g (black, ivory, olive, rust, berry, indigo), 1 stamp set, 1 perforate wheel, 1 modelling tool set, 1 step-by-step instruction min. order quantity: 1





FIMO®

**SIZE FOR LEAF METAL  
8782 BK**

Content: Jar à 35 ml,  
min. order quantity: 5



FIMO®

**GLOSS VARNISH  
8703 01 BK**

Content: Bottle à 10 ml,  
brush in cap,  
min. order quantity: 5



FIMO®

**GLOSS VARNISH  
8704 01 BK**

Content: Jar à 35 ml,  
min. order quantity: 5

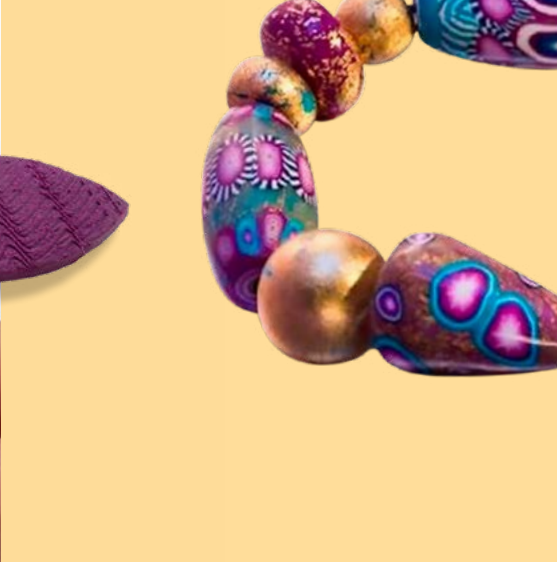
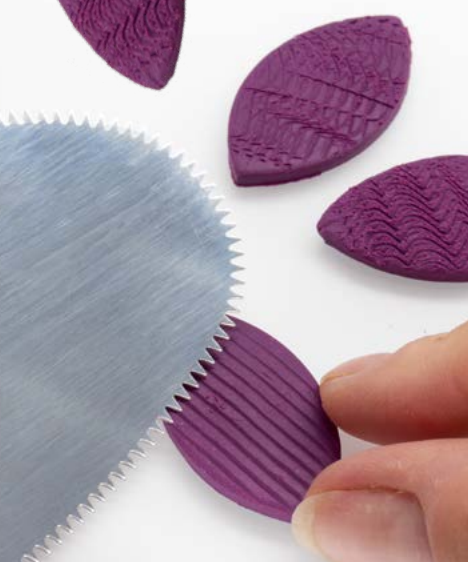


FIMO®

**SEMI-GLOSS VARNISH  
8705 01 BK**

Content: Jar à 35 ml,  
min. order quantity: 5







Made for detail geeks.

# >>Necklace made of FIMO and leaf metal<<



Small beads that impress by combining fresh, trendy colours and exquisite leaf gold metal. The larger beads are even more stunning: not only do they wow with colourful surface patterns – you can even see the leaf gold metals sparkling through from the inside.

Find the full tutorial here:

[www.fimo.com](http://www.fimo.com) [@fimostaedtler](https://www.instagram.com/fimostaedtler)



**1.** Cut half a block of each the violet and the turquoise FIMO professional into four strips. Then divide these into four small, three medium-sized and three large pieces, as pictured. Roll these into balls. Flatten the smallest four balls of each colour.



**4.** Diagonally cut the violet and white FIMO professional in half. Join two halves each to create one two-coloured block. Using the roller roll out this block, fold in half (placing violet on violet, white on white) and repeat until you have a smooth transition of colours.



**2.** Carefully tear off small bits of the leaf gold metal and place on as many balls as you like. Using a knitting needle carefully make a hole into each bead. Harden them in the oven at 110 °C for 30 min. After cooling, varnish the beads with the gloss to prevent the leaf gold from rubbing off.



**5.** Roll up the flattened sheet, beginning with the light-coloured end. The darker colour will be on the outside.



**3.** Mix two strips of the transparent FIMO professional with a sheet of gold leaf. Knead together until fully intermixed. With the acrylic roller flatten the mixture, until it is approx. 1/2 mm thick. Then use it to wrap around the medium-sized beads: The thinner the gold mixture is, the more impressive the depth effect will be.



**6.** Cut the cane in half and add a strip of white FIMO professional. Repeat this process twice until your cane has a pattern with an eight-pointed star.

Find out how to create even more beads on the FIMO website!



## MATERIALS

- 1 block FIMO professional "white" 8004-0
- 1 block FIMO professional "turquoise" 8004-32
- 1 block FIMO professional "ultramarine" 8004-33
- 1 block FIMO professional "violet" 8004-61
- 1 block FIMO effect "translucent white" 8020-014
- Leaf metal gold 8781-11
- Blade set 8700 04
- Grind'n polish set 8700 08
- Acrylic roller 8700 05
- Gloss varnish 8703 01 BK
- Oven thermometer 8700 22

level crafting time 110 °C

hard ca. 50 min 30 min



# FIMO® PROFESSIONAL – THE CLAY FOR THE HIGHEST OF DEMANDS



FIMO® professional

## STANDARD BLOCK 8004-..

85 g, 55 x 55 x 24 mm, segmented into 8 portions, 24 brilliant colours, min. order quantity: 4



### Product information

- Oven-hardening modelling clay
- Especially for professionals, artists and advanced users
- Firm consistency for particularly filigree items
- 24 brilliant colours, incl. 5 True Colour colours
- Practical division into 8 portions for easy blending
- Compatible with FIMO soft, FIMO effect, FIMO leather-effect and FIMO professional doll art
- Easy to open
- Consistent high level of quality for meeting the highest of demands
- Infinitely versatile: for jewellery, accessories and home deco items

### Colour packs:

- 2 different sets
- True Colours with the purest of pigments (with colour mixing system – for exact and brilliant blending results)
- Basic Colours

### Mix quick:

- Clay softener
- Extra soft material for kneading into firm FIMO
- For an easier and faster softening of firm FIMO

### Colour display:

- Comprising 6 feed trays
- 1 compartment for presentation of brochures, flyers or give-aways
- Showcase for presenting finished sample “peacock”
- Intelligent, modular snap-in design
- 24 FIMO professional colours
- Display inlay
- 1 Colour label





FIMO® professional

## LARGE BLOCK 8041-..

454 g (1 lb), with portioning aid, 24 brilliant colours,  
min. order quantity: 1

*Comes in 24  
brilliant colours!*



**NEW!**



*Customise me! Find out more  
about our customisable FIMO  
displays from p. 88!*

FIMO® professional

## COLOUR DISPLAY 8004 VS

Content: 24 colours, 192 blocks à 85 g,  
dimensions (with topper): approx. w 445 x d 400 x h 480 mm,  
min. order quantity: 1





FIMO® professional

### COLOUR PACK 'TRUE COLOURS' 8003 01

Content: 6 blocks à 85 g (white, true yellow, true red, true magenta, true blue, true green), blending table, min. order quantity: 1



FIMO® professional

### COLOUR PACK 'BASIC COLOURS' 8043 C12-1

Content: 12 half blocks à 25 g (white, champagne, true yellow, true red, true magenta, true blue, orange, true green, violet, terracotta, dolphin grey, black), instructions, min. order quantity: 1



FIMO®

### MIX QUICK 8026

Content: 100 g block, min. order quantity: 10



# FIMO® PROFESSIONAL DOLL ART

## Product information

- Especially suitable for doll-making applications
- Ideal for the adding of parts and smoothing over of joints
- Extremely pliable and dimensionally stable
- Natural colours with semi-matt porcelain finish
- Practical division into 8 portions
- Special formula with excellent opacity for miniature faces
- Compatible with FIMO professional, FIMO soft, FIMO effect and FIMO leather-effect
- 6 doll art colours



FIMO® professional doll art

### DOLL ART 8027-..



85 g, 55 x 55 x 24 mm, segmented into 8 portions, 6 colours, min. order quantity: 4

03 porcelain semi-opaque		44 beige semi-opaque	
45 sand opaque		78 nougat opaque	
432 rosé semi-opaque		435 cameo opaque	

FIMO® professional doll art

### LARGE BLOCK 8071-..

454 g (1 lb), with portioning aid, 6 colours, min. order quantity: 1



03 porcelain semi-opaque		44 beige semi-opaque	
45 sand opaque		78 nougat opaque	
432 rosé semi-opaque		435 cameo opaque	



FIMO® professional doll art

**COLOUR PACK  
8073 C12-1**

Content: 12 half blocks à 25 g (white, porcelain, true yellow, ochre, carmine, rosé, cameo, beige, sand, terracotta, nougat, black), instructions, min. order quantity: 1



FIMO® kids

FIMO® soft | effect | leather-effect

FIMO® professional | professional doll art

FIMO®air

Noris® Modelling dough & Modelling clay





LIVE  
LOVE  
LAUGH



FIMC<sup>air</sup>

FIMC<sup>air</sup>  
LIGHT

FIMC<sup>air</sup>  
WOOD-  
EFFECT

FIMC<sup>air</sup>  
GRANITE-  
EFFECT

*Air-drying modelling clays*

no bake. **JUST MAKE.**

# >>DIY bowl made of air-drying FIMOair<<



These self-made bowls made of FIMOair are perfect for all small items such as jewellery, cosmetics, keys or paper clips.

With that the chaos and searching has finally come to an end!

Difficulty level:



easy

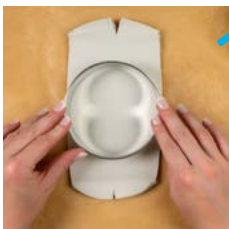
Time required:



ca. 20 min

Find the full tutorial here:

[www.fimo.com](http://www.fimo.com) [@fimostaedler](https://www.instagram.com/fimostaedler)



**1.** Roll out a block of FIMOair in white with the acrylic roller to form an approx. 6mm thick sheet on a piece of baking paper. Take a round cookie cutter with the size of your choice (e.g. 10cm) and cut out the basic shape of your bowl.

**Tip:** In order to achieve an even thickness, you can put a pencil next to the mass to be rolled out and roll over it with the acrylic roller. These „spacers“ ensure that your plate is evenly thick.



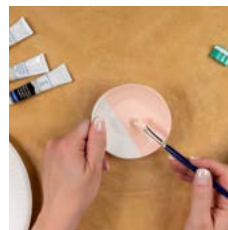
**2.** Place the cut-out circle on your porcelain or glass bowl, press it gently so that it hugs the bowl. This then results in a beautiful, semicircular shape for your bowl.



**3.** Smooth everything with wet hands. You can smooth out cracks, transitions, and bumps with the dampened modeling stick or with a dampened finger. Now let your clay bowl dry on the bowl for at least 24 hours at room temperature.



**4.** When your bowl is done drying, carefully remove it from the bowl. Also check whether the inside of the bowl has dried, if not, put the bowl aside again and let it dry. You can easily sand off sharp edges or bumps with the dampened sanding sponge.



**5.** Now it's time to paint! Take acrylic paints of your choice and paint your bowl according to your ideas. Let the paint dry well.

**Tip:** You can easily mix the colours with each other and thus have an even larger choice of colours.



**6.** A few splashes of paint now look great. Mix any colour, such as black with a little water, and pick up the colour with a toothbrush. Put on a disposable glove. Now you stroke the bristles with your thumb so that splatters appear on your bowl. Let everything dry well.



**7.** Finally, paint your bowl with FIMO gloss varnish and let it dry well again. The varnish makes the bowl shine like glazed ceramic and protects against moisture and dirt.

If you feel like it, you are welcome to design additional bowls in different sizes and colours. Your creativity knows no limits!

## MATERIAL OVERVIEW

- FIMOair "white" 8100
- acrylic roller 8700 05
- FIMO modelling tool 8711
- blade set 8700 04
- FIMO gloss varnish 8703 01 BK
- FIMO sanding sponges (8700 08)
- Design Journey synthetic brush 989 SBK3-3
- Design Journey acrylic paints 8500 C24
- toothbrush
- backing paper
- 2 pencils (hexagon) as a spacer
- small bowl of water to moisten your fingers
- paper plate or base for acrylic paint
- disposable gloves
- round cookie cutters
- small bowl (about the same diameter as the cookie cutter)





# FIMO®air – AIR-DRYING MODELLING CLAYS

## Product information

- Air-drying modelling clays
- With natural substances
- Ideal for art, recreation and hobby as well as for educational purposes in schools, kindergartens and other similar facilities



### FIMO®air:

- Clay-like
- Ready to use
- Dimensionally stable, neutral smell
- Smooth consistency
- Foil packaging prevents the drying out of the modelling clay
- Hardened models can be modified (filed, sanded, drilled, painted, varnished)
- Contains at least 95% natural substances



### FIMO®air light:

- Extra light
- Ready to use
- Dimensionally stable, neutral smell
- Smooth consistency
- Foil packaging prevents the drying out of the modelling clay
- Hardened models can be modified (filed, sanded, drilled, painted, varnished)
- Contains at least 84% natural substances



### FIMO®air wood-effect:

- Wood-like
- Ready to use
- Dimensionally stable, neutral smell
- Smooth consistency
- Foil packaging prevents the drying out of the modelling clay
- Hardened models can be modified (filed, sanded, drilled, painted, varnished)
- Contains at least 95% natural substances



### FIMO®air granite-effect:

- Granite-like touch & feel
- Ready to use
- Dimensionally stable, neutral smell
- Smooth consistency
- Foil packaging prevents the drying out of the modelling clay
- Hardened models can be modified (filed, sanded, drilled, painted, varnished)
- Contains at least 85% natural substances



*Modelling  
without a kiln!*



FIMO®air

**BLOCK 250 g  
8103-..**

1 block, 250 g, 4 colours,  
min. order quantity: 12

0	
white	
43	
pale pink	
76	
terracotta	
80	
grey	



FIMO®air

**BLOCK 500 g  
8100-..**

1 block, 500 g, 4 colours,  
min. order quantity: 12

0	
white	
43	
pale pink	
76	
terracotta	
80	
grey	



FIMO®air

**BLOCK 1000 g  
8101-..**

1 block, 1000 g, 4 colours,  
min. order quantity: 6

0	
white	
43	
pale pink	
76	
terracotta	
80	
grey	





FIMO<sup>air</sup> light

**BLOCK 125 g  
8133-..**

1 block, 125 g, 2 colours,  
min. order quantity: 10



FIMO<sup>air</sup> light

**BLOCK 250 g  
8131-..**

1 block, 250 g, 2 colours,  
min. order quantity: 12



FIMO<sup>air</sup> light

**BLOCK 350 g  
8130-0**

1 block, 350 g, 1 colour,  
min. order quantity: 6



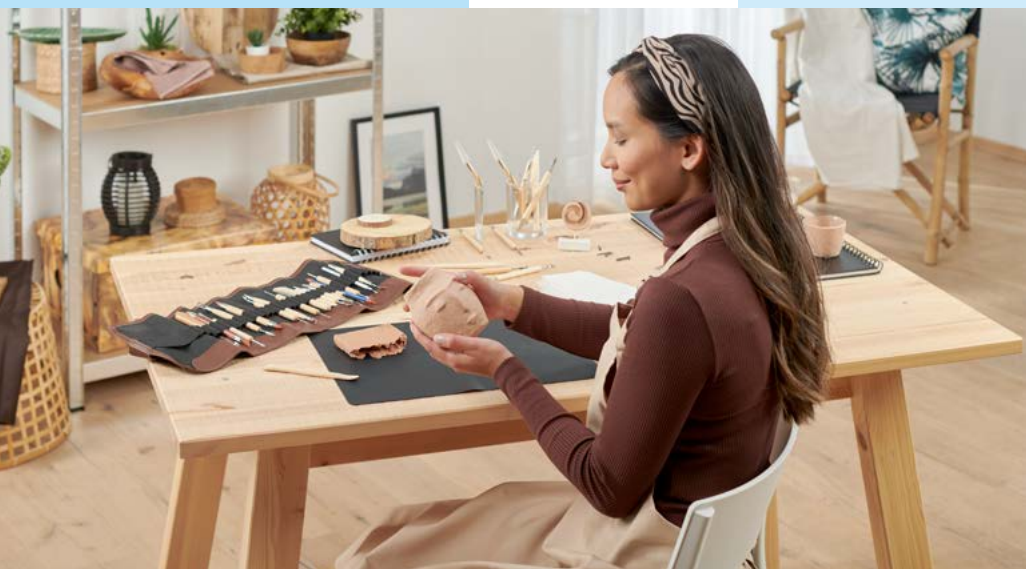


FIMO®air wood-effect

**BLOCK 350 g**  
**8150-W7**

1 block, 350 g, 1 colour,  
min. order quantity: 12

W7  
wood

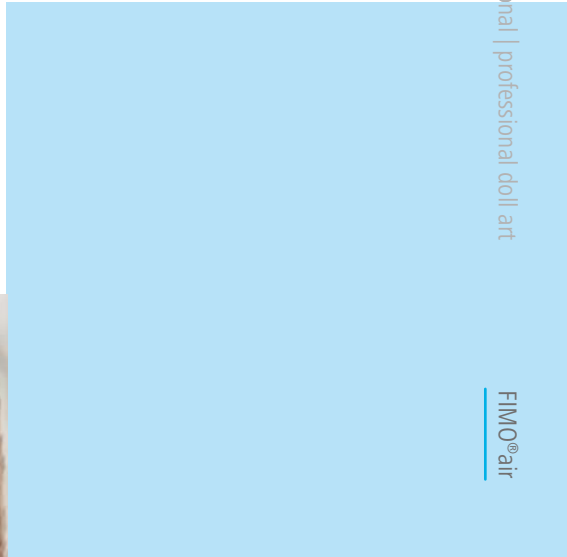




FIMO<sup>air</sup> granite-effect

**BLOCK 350 g**  
**8150-G8**

1 block, 350 g, 1 colour,  
min. order quantity: 12





© STAEDTLER Mars GmbH & Co. KG  
Moosaeckerstrasse 3  
90427 Nuremberg  
Germany

[info@staedtler.com](mailto:info@staedtler.com)  
[www.staedtler.com](http://www.staedtler.com)

Edition 11/2021  
Subject to change.

