



Desktop and Wireless Phone Portfolio

Connecting you to the digital workplace.

The right phone every time

Communicating by telephone is vital to the success of today's enterprises. Whether conversing with colleagues or talking to customers, speech is still at the heart of business communication. Therefore, choosing the right phone is of vital importance.

Superior audio, efficiency, and usability

Unify has a long heritage of providing robust and reliable voice solutions. Consistently innovative, we provide you with the very best phones for your most trusted form of communication - voice. Our portfolio of desktop and wireless phones and accessories is unequalled in its breadth and flexibility, ensuring the best fit for your business. Our phones provide great speech quality and are highly adaptable for any size of business.

User acceptance is a key factor of any successful communications project, which is why Unify continuously develops phones that are easy to use and install. In addition, AudioPresenceHD® ensures the highest sound quality available today, providing an immersive end-user experience that increases productivity.

Whatever the size of your company and wherever you are in terms of technology adoption, Unify can provide the best mix of phones to suit your business needs.

And software upgrades mean that new features can be added with ease. Whatever the size of your company and wherever you are in terms of technology adoption, Unify can provide the best mix of phones to suit your business needs.



OpenScope
Desk Phone CP200 / CP205

What do you expect from the perfect telephone?

“Sustainability, climate protection and resource efficiency are key success factors for our business and when purchasing products we pay a great deal of attention to these criteria. In this respect, we are particularly pleased that the new OpenScope Desk Phone CP phones meet these attributes and in addition reduced their energy consumption considerably.”

Elmar Jordan
Head of Customer Service Networks and
Communication
Viessmann IT Service

“Our company is on the move. We’re constantly growing, and we need to be as mobile and flexible as we can. Our telephones should be mobile and flexible as well throughout our entire organization. The wireless phones are the perfect choice for every workplace – from office to production.”

The owner of an industrial enterprise

More innovation: The Desktop Family

Communication productivity at the desktop is critical to business performance. Phones serve as a key interface to teams, customers and stakeholders, and can directly impact efficiency. Available in SIP, HFA, and TDM, the desk phone family is designed to help organizations improve productivity. With a priority on audio components and acoustic features, our desktop phones deliver a superior audio experience that helps keep users connected, responsive and collaborative within and beyond the walls of the organization.

>> Page 4

More mobility: Wireless phones

The specialized needs of on campus mobile employees, whether for safety or availability, demand robust and reliable solutions from wireless phones. Choose from our global market leading DECT or our WLAN offerings.

>> Page 16

Vibrant conversations happen here

“Unify has proven they are committed to quality and excellence while addressing real needs in the marketplace. We’re proud to honor their hard work and accomplishments and look forward to more innovative solutions from them in the future.”

Rich Tehrani, Internet
Telephony/Editor-in-Chief

What are customers looking for when choosing an enterprise communications phone?

- Reducing telephony costs
- Improving voice quality
- Enabling mobility, allowing employees to feel connected
- Integrating with existing business applications
- Choosing a system that is flexible and easy to use
- Avoiding dependence on one vendor through open standards

Unify phones are the perfect match

Unify desktop phones are stylish, engaging and intuitive without compromising security or quality. They enrich the communications experience with a user friendly interface to high demand features and open integration to productivity enhancing applications.



OpenStage 40

From entry-level to executive, always the right solution for your company

No matter what technology you use today – or want to use tomorrow – Unify offers you devices that always fit.

SIP

SIP telephony

SIP telephones use the Session Initiation Protocol (SIP) to communicate with all the components in the network. Integration into the open, Internet based structure of SIP means access to performance improving business applications, and implementing new features is quick and simple. Thanks to the SIP standard, all SIP telephones support a wide variety of SIP communication systems and can give the demanding user access to business applications.

HFA

HiPath Feature Access

The HFA (CorNet-IP) operating mode combines the advantage of an IP based workpoint with the comprehensive feature set of an OpenScape communication platform. HFA workpoints are connected to the LAN by common Ethernet wires (if no PoE: additional power supply required), which is connected to a PBX by a gateway. By changing the telephone software a change-over from HFA to SIP is possible.

TDM

TDM telephony

Traditional Time Division Multiplexing (TDM) phones are targeted towards customers who wish to keep their current telephony solution, but want a high level of functionality and style.

“The smaller design of the OpenScape Desk Phone IP 35G means more desk space, and users prefer the more upright profile. Buttons feel great and responsive and the sound quality is excellent. With simplified programming and out of the box hold, transfer and headset pre-configured, users are set up much quicker and are more productive faster.”

Tracy Spackman, City of Scottsdale



OpenScape Desk Phone 35G Eco

Desktop Devices

Setting the benchmark for open, unified communications that boost productivity and streamline workflow with the most used office device - the telephone.



OpenScale
Desk Phone IP 55G



OpenScale
Desk Phone CP600

“Unify’s efforts to extend HD voice across its entire IP portfolio with AudioPresenceHD® increase the overall value of its already high quality proven IP desktop phones, allowing customers to enjoy a natural voice experience with higher voice quality, superior clarity, better intelligibility and a richer sound experience. The overall result is higher degrees of customer satisfaction and increased productivity.”

Mohamed Alaa Saayed, Senior Industry Analyst with Frost & Sullivan



Vibrant conversations at the desktop

Combining the latest technology with stylish, user-friendly design, our end-to-end portfolio of desktop devices incorporates an intuitive interface and rich communication features including synchronized contacts, customizable interfaces, and plug and play availability. The bottom line: Lower cost and more efficient communication.

Ease of use

- Rich user interface with intuitive navigation using innovative touch sensitive controls
- Highly customizable with a personal phone book (with pictures), digital photo frame capability, skins/themes, downloadable MP3 ringtones and more

Sustained increase in productivity

- Contact synchronization can result in substantial cost saving on your mobile phone bill by encouraging employees to use their Unify desktop phone rather than their mobile phone
- Gigabit Ethernet built in, so no bottlenecks at the desktop
- Optimize business workflow through a powerful open XML application platform with the ability to develop and/or deploy open standards business applications
- Microsoft Outlook™ synchronization
- Access to LDAP directory

Immersive conversations with HD Audio

- Best-in-class acoustics for crisp, accurate, high fidelity voice on both handsets and speakerphones.
- High definition voice is supported across the entire portfolio of Unify IP telephones
- Available for audio conferencing, providing the best sound quality available today with auto-volume normalization and echo cancellation
- Superior voice quality that alleviates aging demographic and language challenges
- Positive representation of your brand to your customers

Eco-friendly telephones, from manufacturing to power consumption

- Unify is the first IP phone manufacturer to be awarded with the European Blue Angel environmental certificate. Choosing an IP phone with the Blue Angel Label gives customers many benefits, including:
 - High energy efficiency as a result of using intelligent local power management
 - Definition of phone classes and the load cycle allowing the objective comparisons of the operating cost and energy efficiency
 - Assurance that products do not contain material that is harmful to the environment
 - Well-articulated recycling concept
 - Industry-leading warranty and repair processes



IP Desktop Phone Portfolio from Unify

OpenScape Desk Phone CP100

SIP HFA

For cost-effective entry-level scenarios OpenScape Desk Phone CP100 is ideal for basic requirements and cloud installations

- Three-line monochrome graphical display
- 2 fixed feature key
- 3 programmable keys
- Full-duplex hands-free talking
- Wall mountable out of the box



OpenScape Desk Phone CP200 / CP205

SIP HFA

OpenScape CP200 is a feature rich desk top device with superior audio quality. Ideal for users with UC-/CTI support. CP200 includes 10/100 Ethernet switch and the CP205 includes 10/100/1G.

- Two-line monochrome graphical display
- 8 fixed feature key
- 4 programmable keys
- Full-duplex hands-free talking
- Headset interface



OpenStage 15 / 15G

HFA

OpenStage 15 offers exceptional performance in an affordable, easy-to-use device for a wide variety of users

- Two-line monochrome graphical display
- 12 key dialpad and 8 free programmable keys
- Speaker, messages and menu key
- Full-duplex hands-free talking



OpenScape Desk Phone 35G Eco

SIP HFA

Eco friendly, modern, ergonomic design and notably small footprint. Ideal for knowledge workers and contact center agents.

- Wall-mountable without additional kit
- Full duplex speaker phone plus headset jack
- 3 programmable keys (pre-programmed)
- 10 fixed feature keys: Messages, Settings, Speaker, Mute, Hold, Headset, Transfer, Conference, Volume +, Volume -
- Multi-line: 3 lines
- MWI indication (LED), Line key indication (LED)
- Call log, phonebook
- 2 line display
- EEE 802.3az / PoE - Class 1
- AudioPresenceHD®



OpenStage 40 / 40G

HFA

Customizable for various workplace needs. An ideal solution for teams, desk sharing or contact centers.

- Tilttable graphical display, 6 lines monochrome, backlit
- Optical call alert
- 8 fixed function keys (partly equipped with red LEDs)
- 6 freely programmable touch keys (illuminated) with red LEDs (function, speed dial, or line keys)
- 5-way navigator
- Headset jack
- AudioPresenceHD®



IP Desktop Phone Portfolio from Unify

OpenScope Desk Phone CP400

SIP HFA

Large display and numerous programmable keys. This is the standard device for most office workplaces.

- Tilttable graphical display, 3,7" (240*120 pixel), monochrome
- LED backlight (white), notification LED (red/green/amber)
- 4 context sensitive soft keys with LED (red/green/amber)
- 2 fixed feature keys (Menu/Out-of-office)
- 16 free programmable feature keys with LED (red/green/amber)
- 3 audio keys (Mute/Speaker/Headset) with LED (red or green)
- Open listening / Handsfree talking (Full-duplex)
- Headset port (DHSG/EHS)
- 10/100/1000 Base-T Ethernet Switch
- Optional Circuit conversation integration
- AudioPresenceHD®



OpenScope Desk Phone IP 55G

SIP HFA

Modern design, crystal-clear HD sound, supports up to 30 lines. Ideal for the power user or boss /admin.

- Tilt-adjustable in 4 different angle positions with very small footprint
- 8 lines / 30 lines supported with key-modules attached
- QVGA color display
- Videophone with external USB-cam
- 8 free programmable keys and 4 soft keys for easy navigation
- 14 fixed function keys (Hold, Conf, Transfer, Mute, etc.)
- Full duplex speaker phone plus headset jack
- MWI indication (LED), Line key indication (LED)
- Phonebook and LDAP client
- AudioPresenceHD®



OpenScope Desk Phone CP600 / CP600E

SIP HFA

Power devices with color or greyscale display. Ideal for the collaborative workplace with many interoperability capabilities

- Tilttable graphical TFT display, 4.3" (480*272 pixel), color (CP600) or greyscale (CP600E)
- LED backlight (white)
- Notification LED (red/green/amber)
- 5 context sensitive soft keys with LED (red/green/amber)
- 2 fixed feature keys (Menu/Out-of-office)
- 4-way navigator, plus OK-key
- 3 audio keys (Mute/Speaker/Headset) with LED (red or green)
- Open listening / Handsfree talking (Full-duplex)
- Headset port (DHSG/EHS)
- 10/100/1000 Base-T Ethernet Switch
- SD card Interface *
- Bluetooth 2.1 BR/EDR *
- Bluetooth 4.1 LE Beacon with support for Eddystone™ *
- Near field communication (NFC) *
- Optional Circuit conversation integration
- Wall mountable

* CP600 only



OpenStage 60 / 60G

HFA

High Definition voice, vivid LCD display, with rich features and apps for power users & managers

- Tilttable 5.7" color (QVGA) backlit display
- 12 button dialpad
- Status LED & Message Waiting Indicator
- TouchSlider volume
- TouchGuide navigation
- Bluetooth 2.1
- 8 free programmable keys with LEDs
- 9 pre-set feature buttons



TDM Desktop Phone Portfolio from Unify

OpenStage 10 T

TDM

High quality audio ideal for mass deployments in TDM environments

- 12 button dialpad
- Speaker Key with LED
- 3 free programmable keys with LEDs
- Plus/ minus keys



OpenStage 15 T

TDM

OpenStage 15 offers exceptional performance in an affordable, easy-to-use device for a wide variety of users

- Two-line monochrome graphical display
- 12 key dialpad and 8 free programmable keys
- Speaker, messages and menu key
- Full-duplex hands-free talking
- Optional key module



OpenStage 30 T

TDM

Vast array of configurable keys and expansion modules for outbound calling specialists

- Two-line monochrome graphical display
- 8 programmable keys
- 8 fixed feature keys
- Speaker, messages and menu key
- Full-duplex hands-free talking plus headset jack
- Wall mountable



OpenStage 40 T

TDM

Customizable for various workplace needs. An ideal solution for teams, desk sharing or contact centers.

- Tilttable graphical display,
- 6 lines monochrome, backlit
- Optical call alert
- 8 fixed function keys (partly equipped with red LEDs)
- 6 freely programmable touch keys (illuminated) with red LED ((function, speed dial, or line keys)
- 5-way navigator
- Headset jack
- USB slave



OpenStage 60 T

TDM

Vivid LCD display, with rich features and apps for power users & managers

- Tilttable 5.7" color (QVGA) backlit display
- 12 button dialpad
- Status LED & message waiting indicator
- 8 free programmable keys with LEDs
- 12 fixed feature buttons
- Bluetooth V2.1
- USB master and slave
- Headset jack





KM600 Key Module for the OpenScape Desk Phone CP600 and CP600E

- High contrast monochrome TFT display
- 12 free programmable feature keys with LEDs
- 2 Navigation keys
- Max. 4 Modules per CP600
- Max. 2 Modules per CP600E



KM400 Key Module for the OpenScape Desk Phone CP400

- 16 free programmable feature keys with LEDs
- Key labelling by paper inlays
- Max. 2 Modules per phone



Wall Mount Kit available for OpenScape Desk Phone CP200, CP205, CP600 and CP600E

- OpenScape CP100 is wall-mountable out of the box

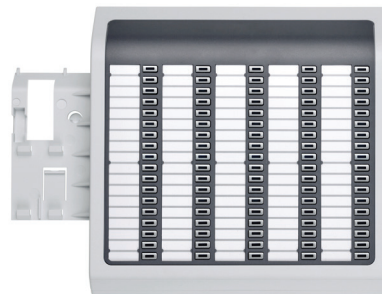


OpenStage Key Module 15, 40, 60

- Additional freely programmable keys with LEDs; function, speed dial, or line keys
- Available in ice blue or lava

OpenScape Key Module 55

- 12 additional freely programmable keys with LEDs; function, speed dial or line keys (multiple layers)
- Graphical LCD display for automatic key labelling
- Available colors: dark grey
- 2 Key Modules per telephone possible
- Wall mount operation with kit



OpenStage Busy Lamp Field (BLF) Module 40

With 90 additional programmable function keys, it's ideal for attendant consoles monitoring time user status (e. g. available, busy)

- Only one BLF suitable for connection
- Key labelling by paper inlays
- External power supply necessary
- Available in ice blue or lava
- Available only for HFA, TDM

Wall Mount Kit for OpenStage 10, 15, 30 and 40

Available in lava and ice blue

Desktop Portfolio at-a-Glance

TDM Portfolio

	OpenStage 10 T	OpenStage 15 T	OpenStage 30 T	OpenStage 40 T	OpenStage 60 T
Housing Color	Ice Blue / Lava	Ice Blue / Lava	Ice Blue / Lava	Ice Blue / Lava	Ice Blue / Lava
Display	-	2 line monochrome	2 line monochrome	6 line, 240*128 pixel monochrome Backlit & Tilttable	320x240 pixel Color TFT Backlit & Tilttable
Keys	3 progr. Speaker key +/- Volume	8 progr. 3 fixed feature +/- Volume	8 progr. 8 fixed feature +/- Volume	6 progr. 8 fixed feature +/- Volume	8 progr. 12 fixed feature Touchwheel Volume slider
Hands-free	-	Yes	Yes	Yes	Yes
Headset	-	-	Yes	Yes	Yes
Bluetooth	-	-	-	-	Yes
Key Module	-	Yes	Yes	Yes	Yes
Wall Mountable	Yes	Yes	Yes	Yes	-

Desktop Devices

IP Portfolio

	CP100	CP200 / CP205	15 / 15 G	IP 35G Eco	40 / 40 G	CP400	55G	CP600 / CP600E	60 / 60 G
Housing Color	Black	Black	Ice Blue / Lava	Black	Ice Blue / Lava	Black	Black	Black	Ice Blue / Lava
Display	3 line mono- chrome	2 line monochrome	2 line monochrome	2 line mono- chrome	240X128 pixel monochrome Backlight & tiltable	240X120 pixel monochrome Backlight & tiltable	320x240 pixel Color TFT Backlight	480X272 pixel TFT Backlight & tiltable CP600: Color CP600E: B&W	320x240 pixel Color TFT Backlight & tiltable
Keys	3 progr. 2 fixed feature	4 progr. 8 fixed feature	8 progr. 3 fixed feature	3 progr. 8 fixed feature	6 progr. 8 fixed feature	16 progr. 5 fixed feature 4 soft	8 progr. 12 fixed feature 4 soft	5 fixed feature 5 soft	8 progr. 12 fixed feature Touchwheel Volume slider
Hands-free	Yes	Yes	Yes	Yes	Yes	Yes	Yes	Yes	Yes
Headset	-	Yes	-	Yes	Yes	Yes	Yes	Yes	Yes
Bluetooth	-	-	-	-	-	-	-	CP600: Yes CP600E: No	Yes
Key Module	-	-	Yes	-	Yes	Yes	Yes	CP600: 4 max CP600E: 2 max	Yes
Wall Mountable	Yes	Yes	Yes	Yes	Yes	-	-	Yes	Yes
Ethernet Switch	10/100 Mbit/s	10/100 Mbit/s Gigabit: CP205	10/100 Mbit/s Gigabit: 15G	Gigabit	10/100 Mbit/s Gigabit: 40G	Gigabit	Gigabit	Gigabit	10/100 Mbit/s Gigabit: 60G
PoE Class	Class 1	Class 1	OS15: Class 1 OS15G: Cl. 2	Class 1	OS40: Class 2 OS40G: Cl. 3	Class 2	Class 3	Class 2	Class 3

Wireless Phones

Making communication mobile



OpenScope
DECT Phone SL5

Unify gives you more competitive advantages with wireless solutions:

- Transact business in real time
- Support employee safety through rugged and reliable connectivity
- Avoid voice mail and phone tag
- Facilitate workgroup collaboration
- Deliver excellent voice quality
- Reduce costly mobile phone bills

You spend a lot of your time elsewhere in the company and you simply must be reachable at all times. Unify offers market leading DECT and WLAN mobile handsets that expand mobile communication at the workplace and anywhere on campus.

Give employees the freedom to communicate effectively from anywhere in the workplace. More than just an attractive phone - wireless phones from Unify deliver the benefits of mobility, reliability, safety, higher productivity, improved customer service, and better communications anywhere, at any time.

Devices for wireless communications

There are two different technological approaches for a wireless communication solution. Depending on your needs and requirements, we recommend either DECT or WLAN as your solution.

DECT

With no requirements for mobile data transmission, our professional DECT phones are the cost-effective optimum solution. Traditional TDM DECT as well as IP DECT infrastructures are supported. Specially equipped versions for industrial environments are also available.

WLAN

To benefit from the cost savings and simplified management of a convergent voice and data network, our WLAN professional phones offer a perfect match.

VoWLAN	DECT	CUSTOMER CONSIDERATION
Supports voice and data on one network	Optimized for voice; limited data capabilities	VoWLAN requires careful deployment and capacity planning, where DECT is relatively a simple installation
802.11 networks operate in the 2.4 GHz band	Dedicated frequency band at 1.9 GHz; marginal interference	Dedicated frequencies help isolate interference
Established protocols for roaming and handover; open security standards exist.	Mature and robust mechanisms for roaming, handover, encryption and security	Security should not be sacrificed when roaming or when calls change access points or nodes to maintain communication
Quality of Service influenced by network traffic, CAC capability	Quality of Service is uniform	QoS guarantees are important to ensure a high standard of performance, particularly if network capacity is insufficient
Supports 3 to 12 channels	Supports 120 non-overlapping channels	More channels will ensure your signal and quality of communication are stable
Typical standby/talk time (battery) is 10 hours	Typical standby/talk time (battery) is 10-12 hours	Longer battery life enables workers to be productive longer and helps reduce dropped calls
Range of 30-150 meters for 802.11 networks	Range of 300 meters	An extended range for your phones will ensure less calls are dropped and allows workers to feel less inhibited in their movement



OpenScope DECT Phone SL5

DECT

The OpenScope DECT Phone SL5 boasts the largest screen with our slimmest and smallest cordless handset, all without compromising high end functionality, security, aesthetics or design.

- Up to 12 hours talking time
- Up to 250 hours standby time
- Full-duplex hands-free talking
- Mobile handset lockout with 4-digit PIN
- Telephone directory: Up to 500 entries and names for all directories
- Vibration alarm
- 2.4" illuminated graphical 65K color display, 240*320 pixel resolution
- Illuminated keypad
- Media pool: Mono/polyphone ringtones and images for screensaver
- HPS (HiPath Positioning System) for locating mobile users
- Bluetooth™, wired headset & PC connectivity
- Telephone directory administration via PC
- 27 display languages
- Brilliant high resolution TFT display



OpenScope DECT Phone S5

DECT

The OpenScope DECT Phone S5 is a cordless phone equally suitable for use at the desktop or on the move throughout the workplace.

- Up to 12 hours talk time
- Up to 165 hours standby time
- Mobile handset lockout with 4-digit PIN
- Full-duplex hands-free talking
- Superior audio quality in noisy environments
- Vibration alarm
- HPS (HiPath Positioning System) for locating mobile users
- Phone book for up to 500 entries
- Illuminated graphical TFT display, 65K color, 128*160 pixel resolution
- 26 display languages
- Mono / polyphone ringtones
- Resistant handset surface against a variety of liquids
- Easy battery replacement via separate battery compartment
- Bluetooth™, wired headset & PC connectivity
- PC software for phone administration



OpenStage M3 Family

DECT

OpenStage M3 is an industry leading, multipurpose cordless phone family for use with DECT networks, specially designed for mobile employees working in tough industrial environments.

All OpenStage M3 phones are characterized by:

- IP65-certified housing, i.e. protection against water and dust
- Shock- and break-proof
- Modern, best in class user interface
- Bluetooth interface
- Excellent sound quality in support of noisy environments
- Standard connector for headsets
- Up to 17 hours talk time and up to 200 hours standby time

The OpenStage M3 family includes:

- OpenStage M3 - a robust cordless phone for tough environments with standard alarming
- OpenStage M3 Plus - a robust cordless phone with advanced alarming, ideal for personal security mainly used for the protection of lone workers or staff working in hazardous areas or situations
- OpenStage M3 Ex - a robust cordless phone for potentially explosive atmospheres with standard alarming
- OpenStage M3 Plus Ex - a robust cordless phone or potentially explosive atmospheres that includes numerous personal alarm signalling options



OpenStage WL3 Family

IP

WLAN

The OpenStage WL3 family is collection of enterprise-grade VoWLAN phones that deliver campus mobility without compromising voice quality. These attractive units offer excellent mobile security features and voice quality, ensured by the latest QoS standard.

Common features across the family include:

- Comprehensive user interface with easy feature access
- Powerful local phone features including feature rich directory, missed calls list, LDAP access
- Integrated IP interfaces to HiPath/OpenStage systems
- Supported networks: IEEE 802.11 a/b/g/n
- TFT display with multiple colors with high resolution, 65,000 colors, 176 × 220 pixel LCD
- Enclosure protection: IP44

OpenStage WL3 Plus model variant available with advanced messaging & alarming capabilities including push button, man down, no movement and handset location with OpenScape Alarm Response integration

About Unify

Unify is the Atos brand for communication and collaboration solutions. At the core of the Atos Digital Workplace portfolio, Unify technology enables organizations of all sizes to transform the way they collaborate, creating a more connected and productive workforce which can dramatically improve team performance, individual engagement and business efficiency.

Unify products represent a strong heritage of technology innovation, reliability and flexibility. Their award-winning intuitive user experience can be delivered through almost any device and in any combination of cloud or on-premise deployment. Augmented by Atos' secure digital platforms, vertical solutions and transformation services, they set the global standard for a rich and reliable collaboration experience that empowers teams to deliver extraordinary results.

unify.com



Copyright © Unify Software and Solutions GmbH & Co. KG, 2018
Mies-van-der-Rohe-Strasse 6, 80807 Munich, Germany
All rights reserved.

The information provided in this document contains merely general descriptions or characteristics of performance which in case of actual use do not always apply as described or which may change as a result of further development of the products. An obligation to provide the respective characteristics shall only exist if expressly agreed in the terms of contract. Availability and technical specifications are subject to change without notice.

Unify, OpenScape, OpenStage and HiPath are registered trademarks of Unify GmbH & Co. KG. All other company, brand, product and service names are trademarks or registered trademarks of their respective holders.