

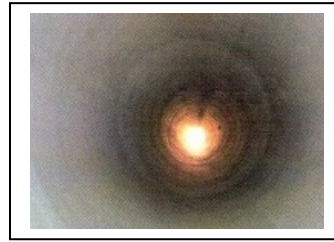


Dev SWCI 101

Corrosion Inhibitor for Sea Water



Sea Water Pipeline Without SWCI 101



Sea Water Pipeline with SWCI 101

DESCRIPTION:

- DEV SEAWATER ADDITIVE SWCI-101 is a corrosion inhibitor containing a proprietary formulation of inorganic compounds and film forming chemicals. It provides good protection to mild steel in presence of seawater at ambient temperature.
- Seawater additive SWCI-101 also contains additives which can act as oxygen scavenger as well as proprietary biocides which take care of bacteria and algae.

PROPERTIES:

- The additives used in seawater additive SWCI - 101 are eco-friendly and would not pose any harm to the user.
- It is water soluble and non-hazardous. It also contains biocide.

APPLICATION :

- Seawater additive SWCI -101 may be added to the storage tank containing sea water at the dosage of 0.05% for around six month and 5% for more than year long preservation and circulated through system.
- Works only with bare metal in contact with seawater. This includes the paint peeled off, cracks in the surface coated zones, etc.
- Operate the system and circulate the liquid for the pipes.
- Corrosion inhibition efficiency of 92% is measured at standard lab conditions at ambient temperature, the rate is around 0.023mm per year.
- When the solution touches the walls of the metal surface it starts forming a film and prevent corrosion by inhibition, so circulation or first 100% wetting of all surfaces is needed.
- In case of big tanks, it works wherever water solution is filled and in contact with the surface. It stops enhancing corrosion of the bare metal and paint damage surfaces due sea water actions.
- For long term protection add periodic doses every six months.
- No airtight closure of the opening of the tank top and sealing in needed for preservation purpose

HANDLING & STORAGE:

- Available in 50L carboys or 200L barrel.
- Acute Toxicity
- Acute oral toxicity data in albino rats by the oral route:
- GHS category 5, >2000 – 5000 mg/Kg body weight, with LD50 cut off at 5000 mg/Kg body weight. Thus, the product, seawater additive SWCI -101 is nontoxic and safe for use. Anaerobic bacteria biocide such as sulphate-reducing bacteria (SRB).

PHYSICAL & CHEMICAL DATA:

Type of Protection	Film forming
Solubility	Soluble in water
Appearance	Colorless to yellow
pH	3.5 – 7.5 @5% in water
Density	1.01 – 1.15 g/cm3

DIRECTIONS FOR USE

Seawater additive SWCI -101 should be added at 500 ppm For seawater hydrotesting and open loop cooling water applications. In case of long layup application, 5% is recommended.

Dev SWCI 101

Revision: 3
Date: 24.02.2020

Global locations:

USA: 10059, Fallen Woods Drive, Houston, Texas 77080.
Tel +1(713) 497 5380,

India: #86, 1st Main Road, Vikas Nagar, Nagasandra Post, Bangalore, 560073
Tel:+919448415628

Non-Hazardous to Mother Nature

