



Document Solutions

> PRINT > COPY > SCAN > FAX

**TASKalfa 7551ci**  
**TASKalfa 6551ci**

COLOR  
MULTIFUNCTION PRODUCT  
FOR A4/A3 FORMAT

# TOUGH AND ROBUST A MARK OF UNRIVALLED PERFORMANCE



- A4 copy/print speed up to 75 cpm (Mono) and 70 cpm (Color) \*.
- Build-in top class high speed dual color scanning system with speed up to 200 ipm A4 Mono/Color.
- Fast first copy time at 4.8 seconds for mono and 5.9 seconds for color\* and warm up time at just 60 seconds.
- Standard 160GB hard disk capacity and 4GB RAM to meet heavy duty tasks requirements.
- Standard 4,150 sheets paper handling capacity and is expandable up to maximum 7,650 sheets.
- Support various media type and capacity with standard paper weight from 60g/m<sup>2</sup> up to 300g/m<sup>2</sup> media capacity \*\*.
- Support Banner Print.

\* For TASKalfa 7551ci. \*\* Only applies to Multi-Purpose Tray (MPT).

TASKalfa 



## Born to be Extraordinary

### KYOCERA Document Solutions is Extraordinary for

- Broad Range of Multifunction Devices and Printers
- Optimized Total Cost of Ownership (TCO)
- Reliable with Long Life Drum and Parts
- New and Advanced Technology

KYOCERA Document Solutions strives to be a Company that contributes to the society and demonstrates “Customer First” principle by providing customers with maximum value to increase their satisfaction. By adhering to the mission of producing document management devices that take balance between “Economy” and “Ecology”, KYOCERA Document Solutions succeeds to develop document management devices with advanced technologies which help customers to optimize office productivity and efficiency at a low total cost of ownership and, at the same time, improving environmental performance.

## Keep up the Good Solutions & Strive for the Excellence

The new flagship TASKalfa 6551ci and TASKalfa 7551ci A3 Color MFPs are developed based on award-winning models with accredited superior performance, excellent image quality and top reliability.

By seamlessly integrating high-speed scanning, user-centric functionalities and features with high paper capacities and versatile finishing options into one high-speed color multifunction device, these systems achieve unrivalled performance in producing excellent business documents and help reduce costs to your company and the environment.

Support KYOCERA’s own business applications and other third party developed business applications, it is capable to meet nowadays customers’ requirements where high image quality, reliability, productivity, and ultimately, security, are expected. It is ideal for high-volume environment, such as large corporations, government offices, print shops and universities.





## User-Centric Functionalities in COPY/PRINT/SCAN/FAX

### For Improving Work Efficiency and Productivity

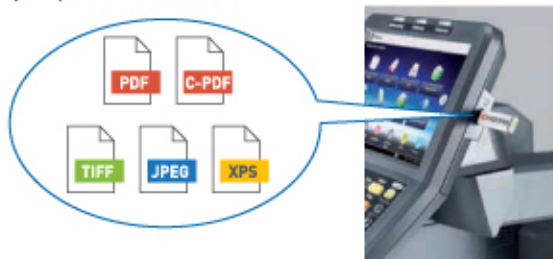
- **Skip Blank Page:** Blank page is skipped during making copies at Document Processor to save unnecessary cost.
- **Dedicated Preset Copy Mode for Special Original Media:** Newspaper Copy, Technical Drawing Copy, ID Copy, Highlighter Copy (reproduce fluorescent colors clearly).



- **Prevent Bleed-thru:** Remove unwanted background when copying or scanning printed double-sized thin paper (e.g. newspaper, NCR paper, and magazine).
- **Carbon Copy:** Print an additional copy or copies of a document from a different media source or using a different media type.
- **Banner Print:** Produce banner with various paper weight in-house anytime in need.

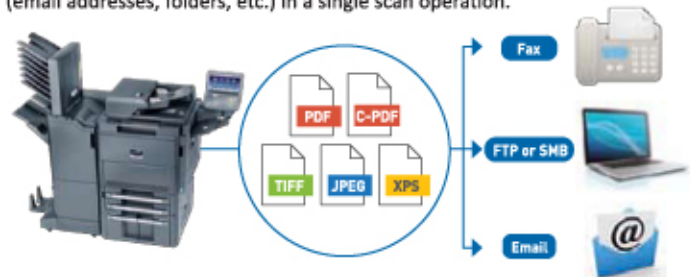


- **Tab Paper Printing:** Allow users to divide certain sections of a document by inserting index tab dividers of standard kind or customized kind produced by the users.
- **USB Scan to/Direct Print:** Scan to or print directly from USB Memory in PDF, C-PDF, TIFF, JPEG or XPS format.



- **Bates Stamp:** Add customized stamp or default stamp (e.g. date/numbering/text/User ID) manually or automatically in printing/copying/sending to facilitate audit trail and identification of output documents.
- **Thumbnail Image Preview:** Easy to check image preview when Stamp function or Form Overlay function is used.
- **High Compressed PDF Size:** Adopt new image analysis technology to achieve high compressed PDF to smaller file size.

- **Standard Scan to Searchable PDF Function:** Scan original paper document, separates texts and images via OCR function to convert texts into text data and composes PDF by combining the images and the text data. This facilitates reuse of PDF file and easily accessible using the search function in PDF file format.
- **Scanned Image File Size Check:** Check the actual scanned document size does not exceed limit before actual sending to e-mail.
- **FTP/SMB/Email/Fax Multi-Sending:** Send document to different destinations (email addresses, folders, etc.) in a single scan operation.



- **Simple Fax Forwarding:** Forward any incoming fax to other destinations by Email, SMB or FTP (Optional).



- **i-FAX Sending (Optional):** Send and receive i-FAX without the mail service by installing Direct SMTP function.
- **Job Skip:** Automatically prioritize the error print job to avoid machine coming to a halt in case of

1. Paper empty in specific tray
2. Mismatched paper size
3. Mismatched media type

Received Order Order of Received JOBs				JOB Execution Order Order of Printed JOBs			
Sequence	Job	Paper Size	Status	Sequence	Job	Paper Size	Status
1	0001	A3	NG	1	0002	A4	OK
2	0002	A4	OK	2	0004	A4	OK
3	0003	A3	NG	3	0001	A3	NG
4	0004	A4	OK	4	0003	A3	NG

- **Job Finish Notice:** Send email notification to specific user when a copy/scan job is completed.





## Usability Design Optimizes Office Efficiency

- **Smart Control Panel:** Excellent clarity adjustable 10.1 inch color touch panel display with swivel type operability similar to smart phone and tablet.



- **Home Screen:** All commonly used functions and applications are found on default Home Screen. The Home Screen can be customized easily to meet different user (or Group User) needs for immediate access to commonly used functions.



- **Printer Driver's Quick Print Tab:** Create and save frequently used custom profiles as graphic icons to allow programming of complex jobs in one click.
- **Custom Box:** Ease-of-use Custom Box provides long term job storage at device, allowing users to securely print and store jobs on the device and output them when required.

- **Wireless LAN enabled (Optional):** Enhance flexibility for printing without LAN line.



- **Card Reader and USB keyboard (Optional)** are seamlessly built in with the mainframe.



With optional Card Reader Holder E

## Enhancing Device Productivity with Versatile Finishing Unit

MT-730(B): 7 bins Mailbox Sorter (Optional)

DF-790(C) Document Finisher (Optional)

for max. 4,000 sheets\*

BF-730 Booklet and Tri-Folding Unit (Optional)

Standard Paper Feeder with capacity up to 4,000 sheets

Standard Document Processor

for one-path duplex scanning and copying for up to 270 sheets

Adjustable and Ease-of-Use 10.1 inch Color Touch Panel

Standard Job Separator

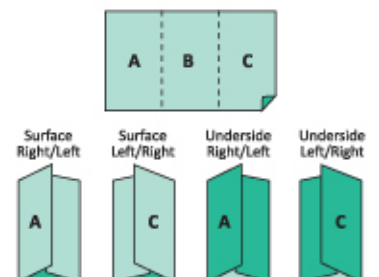
for up to 70 sheets

Multi-Purpose Tray for up to 150 sheets

PF-780(B) Multimedia Side Tray\*\* (Optional)

for up to 500 sheets

PF-740(B) Paper Feeder (Optional) with capacity up to 3,000 sheets



\*3,000 sheets when BF-730 is attached to DF-790(C).  
 \*\*PF-780(B) is required with PF-730(B) or PF-740(B).  
 \*\*\*Optional DF-790(C) is required.  
 \*\*\*\* Optional DF-790(C) & BF-730 are required.

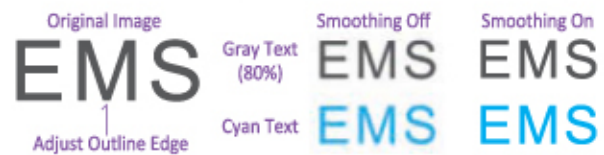
- Allow automatic stapling, manual stapling\*\*\* and booklet finishing\*\*\*\* (Optional).
- Provide a variety of Folding Method (Center Fold or Tri-Fold\*\*\*\*).  
 Tri-Fold: 1 sheet (max. 256g/m<sup>2</sup>) to 5 sheets (max. 90g/m<sup>2</sup>).





## High Image Quality and Superb Color Consistency

- **KYOCERA Image Refinement (KIR) technology:** Produce excellent black and color image quality with consistency.



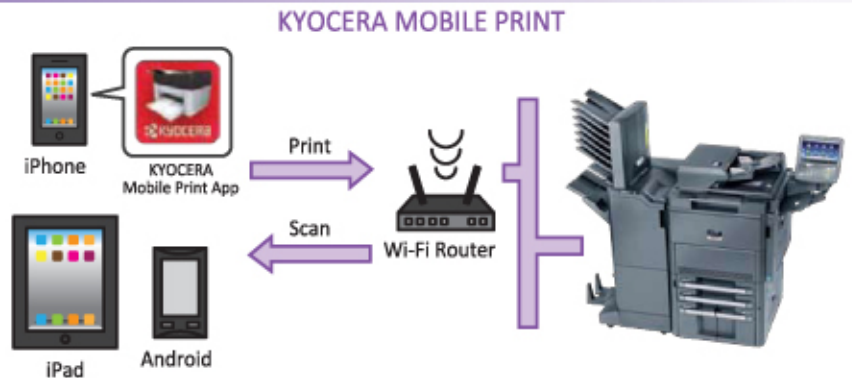
- **Multiple Image Adjustment Tools for optimal output:**

- **Color Optimizer at KYOCERA KX Driver:** Allow users to adjust the pixels near the color value or color space of defined areas instead of the entire image by selecting 2 from 3 parameters (Hue, Light, Saturation) and add up to 10 colors in each adjustment settings.
- **One-Touch Color Image Adjustment:** Total 9 photo adjustment modes to select optimal settings for photo image (Portrait; Blue Scenery; Green Scenery; Vivid; Soft; Sharp; Smooth; Light; Heavy).
- **Print Gray as Black:** Improve text recognition and decreases color shadowing to reproduce accurate grayscale image.

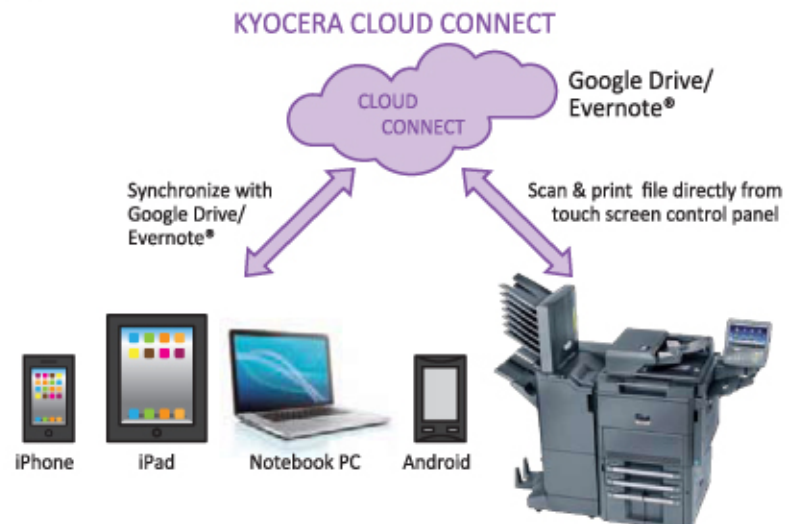


## Mobile & Cloud enable Mobile Workforce brings flexibility to Work

- **KYOCERA Mobile Print:** An app-based solution that enables users to simply and conveniently print documents, web pages, and images on demand from virtually anywhere, on their Apple and Android smartphone and tablet devices to select KYOCERA MFPs and printers. Users can also scan files and images from same MFPs to their mobile devices. Our devices also support AirPrint for iPhone and iPad.



- **KYOCERA Cloud Connect (Optional):** Retrieve and print files in Google Drive and Evernote®, a cloud service provider, directly from any KYOCERA HyPAS-enabled MFPs. You can even upload scanned files directly to Google Drive and Evernote® – directly from the MFP, without going through a computer.





## Multiple Systems for a Safe and Secure Documentation Workflow

- **Private Print:** Release print job at the device by entering a preset four-digit access code when making a print at KYOCERA KX Driver.
- **Password Protection Setting:** Allow administrator to set Password Policy to limit user access to designated capacity.



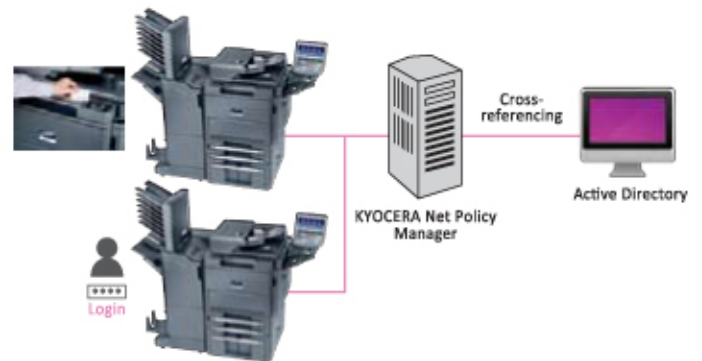
- With the aid of **Network Authentication**, IT Department can manage user authentication easily by incorporating with centralized Authentication Server (NTLM, Kerberos, KYOCERA Net Policy Manager\*).



- **Security Watermark:** Distinguish original from copies and provides protection for sensitive document against duplication.

- **KYOCERA Net Policy Manager (Optional):** Give staff the flexibility to send a document to print then collect it whenever they want from whichever multifunction they prefer. This helps them avoid busy devices, prevents documents being collected by the wrong person.

If you add the Card Authentication Kit (Optional) for KYOCERA Net Policy Manager, you are able to swipe your ID Card to get your print document directly. User Administrator can also set the IC Cards to allow quick and secure access with pre-defined user restrictions such as color output restrictions and output quota.



- **KYOCERA Data Security Kit (Optional):** Encrypt data before storing in the hard disk and automatically overwrite all data stored in the hard drive when the data becomes unnecessary.



- **FAX Memory Overwrite (Optional):** Erase FAX memory after sending or receiving for confidentiality.





## Maximize Savings, Minimize Cost

### Design for energy savings

- **Weekly Timer:** Allow administrator to preset the machine on and off time to optimize energy savings.
- **EcoPrint:** Flexible EcoPrint setting to consume less energy and toner.
- **Energy Saver:** 1.8w or less power consumption at Energy Saver Mode.

### Design for a better environment

- Leading long life Mega Surface Amorphous Silicon (A-Si) Drum, developer and replacement parts.
- Parts for Recycling.
- Non-toxic Materials.
- Quiet operation design for a comfortable Working Environment.

### Smart utilities for managed print and minimize related device management costs

- **KYOCERA Command Center RX:** By using a web browser, the authorized administrator can access the built-in KYOCERA Command Center RX and check the operation status of the device, toner level, paper availability, as well as change settings related to security, network printing and advanced network setting etc.



- **KYOCERA Net Viewer:** A comprehensive network management tool used to monitor, maintain, and update up to 100 network printing devices locally and remotely. Through KYOCERA Net Viewer, administrators can simply install and update firmware on all KYOCERA network connected devices while easily monitoring printed black/color pages, device configuration, accounting, toner usage, and alerts. By implementing KYOCERA Net Viewer, the manpower required to monitor your connected devices is greatly reduced.



Eco Mark (Japan)



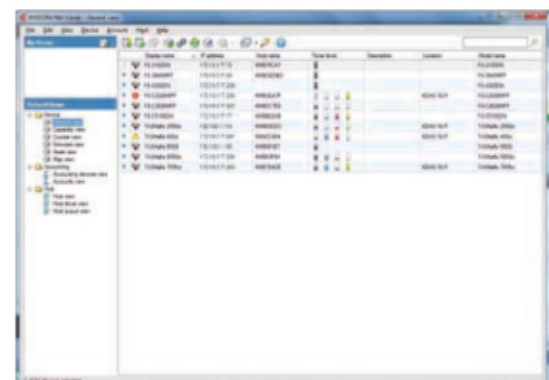
EcoLeaf Environmental Label (Japan)



Law on Promoting Green Purchasing (Japan)

KYOCERA Document Solutions has been actively promoting the acquisition of various environment labels, aiming to provide products that are safe and comfortable for our customers to use and have minimal environmental impact.

- **Easy Lock (Optional):** A simple solution that help you control color copying of your MFPs.
  1. Enter an access code to make color copy.
  2. Press "Public Access" directly to make black & white copy.



		Main Specifications	
Model		TASKalfa 6551ci	TASKalfa 7551ci
Main Function		Copy, Print, Scan, Fax (Optional)	
Writing Method		Semiconductor Laser	
CPU		P1022 (Dual Core) / 1067MHz	
Print Speed (A4) (Simplex)	Mono/Color	65/65 cpm	75/70 cpm
Scanning Speed (A4, 300dpi)	Simplex (Mono/Color)	120/120 ipm	
	Duplex (Mono/Color)	200/200 ipm	
Memory/ HDD Capacity		4GB/160GB	
Warm Up Time		60 seconds	
Paper Capacity	Standard	4,150 sheets [2 x 500 sheets (Cassette) + 2 x 1,500 sheets (Cassette) + 150 sheets (MPT)]	
	Maximum	7,650 sheets (Main Unit + PF-780 + PF-740)	
Paper Size	Cassette	Min. A5R - Max. A3 + (12" x 18")	
	MPT	Min. A6R - Max. A3 + (12"x18") & Banner Print of 1,220mm	
Paper Weight	Cassette	60 to 256 g/m <sup>2</sup>	
	MPT	60 to 300 g/m <sup>2</sup>	
Duplex Printing		Paper size: B5 (250 x 176mm) to A3 + (12"x18"); Paper weight: 60 to 256 g/m <sup>2</sup>	
Control Panel		10.1 inch Color Touch LCD Panel	
Dimension (W x D x H) (Main Unit)		1,039mm x 801mm x 1,347mm (with Control Panel)	
Weight (Main Unit)		190kg	
Power Consumption (Standard configuration)	Copy/ Print Mode	Mono	1,350W or less
	Color		1,470W or less
	Stand-by Mode		300W or less
	Energy Saver		1.8W or less
Noise (ISO7779/ISO9296)	Copy/ Print Mode	75dB(A)	
	Stand-by Mode	58dB(A)	
Copy Functions (Standard)			
Copy Size		Max. A3 (Ledger) - Min. A6R	
Resolution		600 x 600 dpi; 9600 x 600 dpi level	
First Copy Time		Mono: 5.4 seconds; Color: 6.2 seconds	Mono: 4.8 seconds; Color: 5.9 seconds
Zoom Ratio	Manual	25% to 400% (1% per Step)	
	Pre-defined	SRSE	
Multiple Copy		1 to 9999	
Print Functions (Standard)			
Resolution		600 x 600 dpi; 9600 x 600 dpi level	
PDL		PRESCRIBE, PCL6, KPLD3 (PostScript 3 compatible), XPS	
Direct Print		YES	
Supported Protocol		NetBEUI, IPv6, IPv4, IPX/SPX, IPsec, IPP, IPP over SSL, WSD Print, Bonjour	
Operating System Supported		Windows Server 2003, Windows Server 2008, Windows Server 2008 R2, Windows Server 2012, Windows XP, Windows Vista, Windows 7, Windows 8; Apple Macintosh OS 10.x	
Interface		USB2.0 High Speed x1;1000BASE-T/100BASE-TX/10BASE-T; USB Host interface (USB Host) x4	
USB Memory Printing		Standard	
USB Memory Printing Format		TIFF, JPEG, PDF, XPS	
e-MPS Printing		Job retention and Custom Box function	
Scan Functions (Standard)			
Color Selection		Auto Color (Color/Gray); Auto Color (Color/B&W); Full Color; Grayscale; Black & White	
Resolution		600dpi, 400dpi, 300dpi, 200dpi, 200x400dpi, 200x100dpi	
File Format		TIFF, JPEG, XPS, PDF (MMR/JPG/High-compression PDF), Searchable PDF	
Image Type Mode		Text, Photo, Text + Photo, OCR	
Transmission Type		Scan to SMB; Scan to E-mail; Scan to FTP or FTP over SSL; Scan to USB; TWAIN Scan; WSD Scan; WIA Scan	
Address Storage		2,000 addresses (Common address list), 500 groups (Group address list)	
Fax Functions (Optional)			
Original Size		Max. A3 (Ledger) - Min. A5 (Statement)	
Paper Size		Max. A3 (Ledger) - Min. A5 (Statement)	
Coding Method		MMR, MR, MH, JBIG	
Transmission Speed		33.6/31.2/28.8/26.4/24.0/21.6/19.2/16.8/14.4/12.0/9.6/7.2/4.8/2.4 kbps	
Memory		Standard: 12MB; Maximum:120MB (with optional fax memory)	
G3 FAX / DUAL FAX / Network FAX		Yes	
Internet FAX		Optional Internet FAX Kit(A)	
Consumables & Options			
Toner Kit		TK-8709(C/M/Y/K)	
Maintenance Kit		MK-8715(A/B/C/D/E)	
Paper Feeder		PF-770: 3,000 sheets Side Deck (A4/Letter); PF-780(B): 500 sheets Multimedia Side Tray; PF-730(B): 500 sheets x 2 Paper Deck; PF-740(B): 1,500 sheets x 2 Paper Deck (A4/Letter)	
Finisher		DF-790(C): 4,000 sheets Finisher; PH-7C: Punch Unit; MT-730(B): 7 bins Mailbox Sorter; BF-730: Booklet and Tri-Folding Unit	
Gigabit Ethernet Board		IB-50: For Additional Network, IB-51: For Wireless	
Fax System		Fax System(W) B	
Internet FAX		Internet FAX Kit(A)	
Data Security		Data Security Kit(E)	
Document Guard		Printed Document Guard Kit(B)	
Card Authentication		Card Authentication Kit(B) / Card Reader Holder(E)	
Copy Tray		Copy Tray(D)	
Banner Guide		Banner Guide(A)	



Kyocera Document Solutions India Pvt. Ltd.

Second Floor, Centrum Plaza, Golf Course Road,  
Sector-53, Gurgaon, Haryana 122 002, India  
Phone: +91-0124-4671081  
Fax: +91-0124-4671001  
<http://www.kyoceradocumentsolutions.co.in>  
Email: [bimal.nanda@dtd.kyocera.com](mailto:bimal.nanda@dtd.kyocera.com)

\*KYOCERA does not warrant that any specifications mentioned will be error-free. Specifications are subject to change without notice. Information is correct at time of going to press. All other brand and product names may be registered trademarks or trademarks of their respective holders and are hereby acknowledged.

@All rights reserved. Brochure/KDAS/201309/Mercury2

KYOCERA Business Partner

Scan for more information



[www.kyoceradocumentsolutions.co.in](http://www.kyoceradocumentsolutions.co.in)