



ABMI Species Profile Series

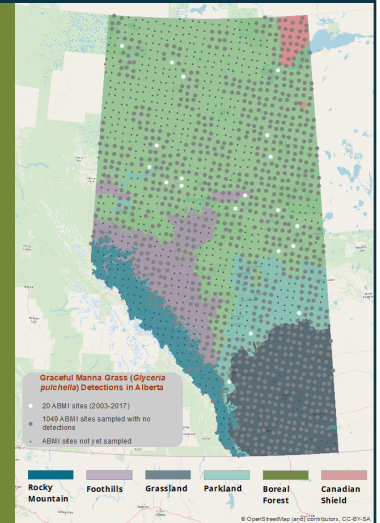
Graceful Manna Grass

Glyceria pulchella

Conservation Status: AEP - Secure | SRANK - S5

Taxon data collected: 2003 - 2017

Data Summary: Basic



Introduction

Over its decade-plus operations, the ABMI has generated a comprehensive dataset on Alberta's species, their habitats, as well as the extent and type of human footprint across the province. With the accumulation of this information, the ABMI has developed analysis methods to predict species relative abundance, and examine species responses to vegetation and soil types, and human footprint in Alberta. These methods have been applied to hundreds of species; this profile provides summary results for one.

For this species, it was not possible to create complex habitat association models because it was detected too few times. Therefore, the results presented are a coarse index of habitat use which compares the proportion of detections in each native vegetation and human footprint type in relation to the proportional availability of the habitat types.

The target audiences for species profiles are resource managers in Alberta. Summary of data can be used to support land use planning and mitigate risk of development on a particular species of interest. While developed to support resource management, these species profiles are also of wider interest to anyone wanting to find out more about species that make their home in Alberta, what habitats they are found in, and how our land use affects their populations.

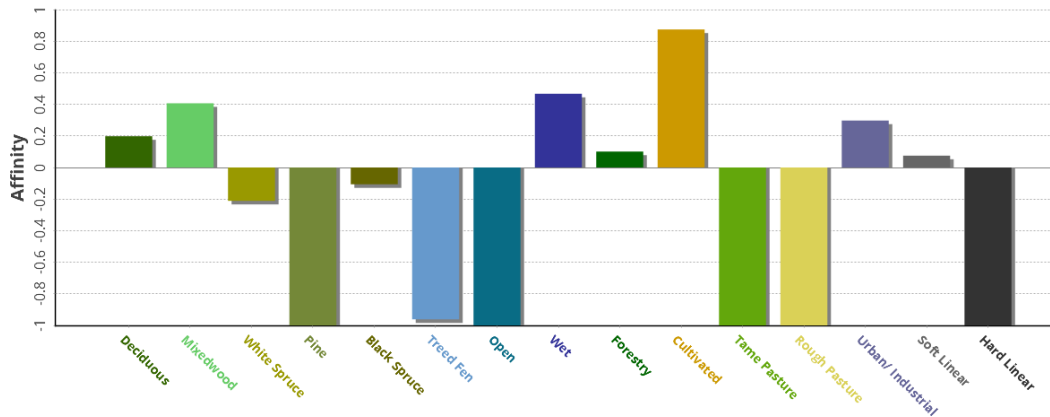
Please note that the results are predictions based on the best available data at the current time. All results must be considered with caution; interpretation caveats are presented with each result. As with any statistical model, our confidence in the modeled outputs will increase as we gather more data and refine our models; to that end we update the summary results annually based on new data. As an internal check, for species with additional information in the literature, we examine whether our models produce ecologically meaningful results. For data poor species, our predictions are the first contribution towards developing an understanding the species ecology.

Please refer to the [ABMI Species Website Manual](#) for a complete description of methods and limitations associated with the analyses included in this species profile.

Habitat & Human Footprint Associations



Habitat Associations for Species with Few Detection in the Forested Region



Use-availability index graph: Index of species habitat use based on the proportion of species detections in each native vegetation and human footprint type in comparison to the habitat availability. The index (bars) range from -1 (avoidance) to +1 (preference), given availability of a particular vegetation or human footprint type.

References & Credits

Data Sources

Data collected by ABMI.

Recommended Citation

Alberta Biodiversity Monitoring Institute. 2019. Graceful Manna Grass (*Glyceria pulchella*). ABMI Website: abmi.ca/home/data-analytics/biobrowser-home/species-profile?tsn=99003903.

Additional ABMI Resources

Alberta Biodiversity Monitoring Institute. 2016. ABMI Species Website Manual, Version: 2016-12-02. Alberta Biodiversity Monitoring Institute, Alberta, Canada. Report available at: abmi.ca.

Alberta Biodiversity Monitoring Institute. 2014. Manual for Species Modeling and Intactness, Version 2014-09-25. Alberta Biodiversity Monitoring Institute, Alberta, Canada. Report available at: abmi.ca.

Alberta Biodiversity Monitoring Institute. 2014. Terrestrial field data collection protocols (abridged version) 2016-05-18. Alberta Biodiversity Monitoring Institute, Alberta, Canada. Report available at: abmi.ca.

Download [ABMI Species and Habitat Data](https://abmi.ca).

View [ABMI Collaborations](https://abmi.ca).