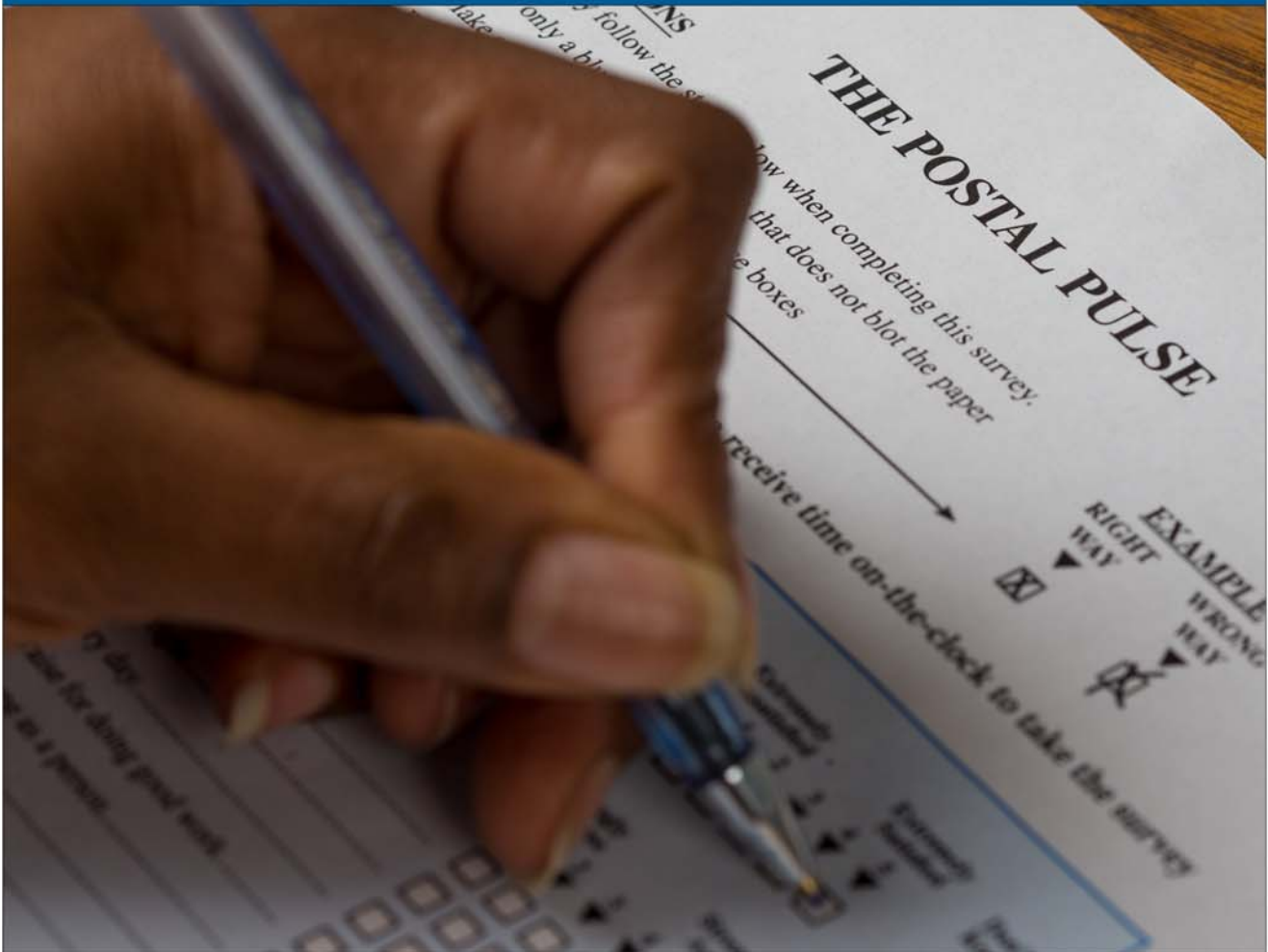


postal|bulletin

PUBLISHED SINCE MARCH 4, 1880

WHY EMPLOYEE ENGAGEMENT?

Your opinions help us improve the USPS® workplace.



Please take your survey May 22 – June 22.



See page 3.



Contents

COVER STORY

Why Employee Engagement? 3

POLICIES, PROCEDURES, AND FORMS UPDATES

Manuals

ELM Revision: Leave 4

POM Revision: Modes of Delivery 4

Publications

Publication 431 Revision: Changes to Post Office Box
Service and Caller Service Fee Groups 6

ORGANIZATION INFORMATION

Information Security

Protect the Network — Separate for Security 7

Mailing and Shipping Services

Mail Alert 7

Stamp Services

Update: Stamp Announcement 18-13: United States

Air Mail Stamp 29

Correction: Pictorial Postmarks Announcement 29

Pictorial Postmarks Announcement 30

How to Order the First-Day-of-Issue Digital Color or
Traditional Postmarks 33

PULL-OUT INFORMATION

Fraud

Invalid USPS Corporate Account Numbers 9

Missing, Lost, or Stolen U.S. Money Order Forms 10

Missing, Lost, or Stolen Canadian Money Order Forms 16

Verifying U.S. Postal Service Money Orders 19

Counterfeit Canadian Money Order Forms 19

Toll-Free Number Available to Verify Canadian
Money Orders 19

Other Information

Overseas Military/Diplomatic Mail 20

Thrift Savings Plan Fact Sheet 26

Freely Associated States Restrictions 28

POSTAL BULLETIN 2017 ANNUAL INDEX

2017 Annual Index PB 22484 (1-4-18)



Find the latest in mail and delivery information
and services offered by U.S. Postal®
in the *Postal Bulletin* at
about.usps.com/postal-bulletin

Cover Story

Why Employee Engagement?

The U.S. Postal Service® continues to make employee engagement a top priority because of its commitment to employees and an improved customer experience. As Postmaster General and Chief Executive Officer Megan Brennan states, “Only through taking care of our employees can we truly take care of our customers, and ultimately, grow our business.”

Managers and supervisors who practice employee engagement ensure their work teams thrive in the workplace through:

- Engaging employees with meaningful conversations,
- Building relationships where employee expectations are clear, and
- Letting everyone know they are valued.

Employees who are more engaged provide better customer service, have better attendance, and are prone to fewer accidents. Postal Pulse® survey participation helps the Postal Service™ benchmark the depth of engagement in work groups and provide a summary of opportunities that can help all employees thrive in the workplace.

The next Postal Pulse survey period is May 22–June 22, 2018. Encourage your team members to fill out the Postal Pulse survey. Postal Service leadership will use employee feedback from this survey to further improve USPS® workplaces. Employees may take the Postal Pulse survey the following ways:

- **Bargaining employees:** Work and home mailings, Outlook email, or *LiteBlue*.
- **PCES/EAS employees:** Outlook email or *LiteBlue*.

Employee feedback is very important to the Postal Service. That’s why this next survey features the comment box that you requested on the last survey. **Return your survey by June 22 — your opinion counts.**

If you have questions about the Postal Pulse survey or its confidentiality requirements, please contact the Engagement team by sending an email to Engagement@usps.gov or by calling 844-303-6424.

— *Employee Engagement,*
Chief Human Resources Officer, 4-26-18

Policies, Procedures, and Forms Updates

Manuals

ELM Revision: Leave

Effective April 26, 2018, the Postal Service™ is revising the *Employee and Labor Relations Manual* (ELM), section 514.4, to update acceptable reasons and instructions for leave without pay (LWOP).

Employee and Labor Relations Manual (ELM)

	*	*	*	*	*
5					
510					
514					
514.4					

Exhibit 514.4

Acceptable Reasons and Instructions for LWOP

* * * * *

[Add a new last sentence to item j. to read as follows:]

Acceptable Reasons for LWOP	Instructions
j. Union business.	***Partisan political activity as defined by the Hatch Act and its implementing regulations is not an acceptable reason for union business LWOP.

* * * * *

The Postal Service will incorporate this revision into the next online update of the ELM, which is available on the PolicyNet website:

- Go to blue.usps.gov.
- In the left-hand column under “Essential Links,” click *PolicyNet*.
- Click *Manuals*.

The direct URL for the Postal Service PolicyNet website is blue.usps.gov/cpim.

*— Benefits and Wellness,
Human Resources, 4-26-18*

POM Revision: Modes of Delivery

Effective April 26, 2018, the Postal Service™ is revising the *Postal Operations Manual* (POM), part 631, to update policy related to modes of delivery.

Postal Operations Manual (POM)

	*	*	*	*	*
6					
63					
631					
631.1					

[Revise the text of 631.1 to read as follows:]

The Postal Service-approved modes of delivery available for all existing delivery points, including newly established and extensions of delivery points, are in 631.24. Centralized delivery is the preferred mode of delivery for all new

residential and commercial developments. Curbside, sidewalk delivery, and door modes are generally not available for new delivery points, with very rare exceptions, as determined by the Postal Service in its sole discretion, on a case-by-case basis. The characteristics of the area to be served and the methods deemed necessary to provide adequate service by the Postal Service are described in greater detail throughout this section.

[Revise the title and introductory text of 631.2 to read as follows:]

631.2 Centralized Delivery (Preferred Mode)

Centralized delivery service is the preferred mode of delivery and may be provided to call windows, horizontal locked mail receptacles, cluster box units (CBUs), wall-mounted receptacles, or mechanical conveyors (mechanical conveyors are only for high-rise and multiple-tenant buildings, and only if certain conditions are met; consult your postmaster for details).

[Revise the first and second sentence of item a. to read as follows:]

- a. *Delivery requirements:* CBUs and USPS STD 4C (wall-mounted) equipment may be approved for use at one or more centralized delivery points in a residential housing community or business location. The local postal manager or District designees must approve the mailbox sites and type of equipment.***

631.21 Curbside Delivery

[Revise the last sentence of 631.21 to read as follows:]

***Mail receptacles must be grouped two to a property line, where possible.

631.22 Sidewalk Delivery

[Revise the first sentence of 631.22 to read as follows:]

Sidewalk delivery may be provided to boxes located near the public sidewalk, only with prior approval from the Postal Service.***

* * * * *

[Revise the text of item a. to read as follows:]

- a. If the sidewalk abuts the curb or if other unusual conditions exist (e.g., excessive street parking) that make it difficult or impractical to install or serve boxes at the curbline, customers in these situations may be permitted to install all their boxes at the edge of the public sidewalk nearest the residence, where they can all be served by a carrier from the sidewalk.

* * * * *

631.23 Door Delivery

[Revise the text of 631.23 to read as follows:]

Door delivery may be provided to boxes located at or near the door of a business or residential delivery point, or through a door slot, only with prior approval from the District Manager, and only if the box or mail slot can be efficiently, safely, and conveniently served by the carrier.

Door delivery will not be available for new delivery points, except in very unusual circumstances as determined by the Postal Service in its sole discretion.

* * * * *

[Revise the title and text of 631.242 to read as follows:]

631.242 Newly Established or Extended Centralized Delivery Points (Preferred Mode)

Centralized delivery is the preferred mode for new or extended business or residential delivery points, with very rare exceptions, as determined by the Postal Service in its sole discretion, on a case-by-case basis (see 631.1). The mail receptacle and location of the delivery point(s) are

approved by local postal officials in advance of the occupancy of the residence, business, or other site associated with the delivery point.

631.243 Newly Established or Extended Sidewalk or Curbside Delivery Points

[Revise the text of 631.243 to read as follows:]

Sidewalk or curbside delivery is permitted for new or extended business or residential delivery points, only with prior approval from the Postal Service. The mail receptacle and location of the delivery points are approved by the local District Manager in advance of the occupancy of the residence, business, or other site associated with the delivery points.

[Revise the title and text of 631.244 to read as follows:]

631.244 Newly Established or Extended Door Delivery Points

Door delivery will not be available for new delivery points, except in unusual circumstances as determined by the Postal Service in its sole discretion. Approval for newly established or extended business or residential door delivery points must come from the Area Vice President or designee. The Area Vice President must report the number of granted requests for newly established or extended business or residential door delivery points to Headquarters Delivery or its designee quarterly.

631.3 Business Areas

[Revise the introductory text of 631.3 to read as follows:]

The type and design of buildings govern the mode of delivery to be implemented; the location of USPS-approved delivery equipment is subject to Postal Service approval. Centralized delivery is the preferred mode of delivery for new delivery points, with very rare exceptions, as determined by the Postal Service in its sole discretion, on a case-by-case basis. Modes of delivery are described below:

[Revise the first and second sentence of item a. and the introductory text of item b. to read as follows:]

- a. *Centralized Delivery.* Centralized delivery service is for all business office buildings, office complexes, and industrial/professional parks.***
- b. *Single Point Delivery.* Where an exception to 631.1 has been granted by the District Manager or District designee, and subject to Area approval, single-point delivery (door, curbside, or sidewalk) may be provided for single points, receptacles, or door slots provided by business management.

* * * * *

631.4 Residential Housing (Except Apartment Houses and Transient Mobile or Trailer Homes)

[Revise the third and fourth sentence of 631.4 to read as follows:]

***Centralized delivery is the preferred mode for new delivery points. Curbside, sidewalk delivery, and door modes are generally not available for new delivery points, with very rare exceptions, as determined by the Postal Service, in its sole discretion, on a case-by-case basis (see 631.1).

* * * * *

631.53 Local Ordinances

* * * * *

[Revise the text of item a. to read as follows:]

a. Centralized Delivery Service. See 631.2.

* * * * *

631.542 Exceptions

[Revise the introductory text of 631.542 to read as follows:]

Delivery of mail to individual boxes in multiple residential buildings containing apartments or units occupied by different addressees is contingent upon USPS concluding the following requirements are met:

* * * * *

The Postal Service will incorporate these revisions into the next online update of the *Postal Operations Manual*, which is available on the PolicyNet website:

- Go to blue.usps.gov.
- In the left-hand column under “Essential Links,” click *PolicyNet*.
- Click *Manuals*.

The direct URL for the Postal Service PolicyNet website is blue.usps.gov/cpim.

— *Delivery Programs Support, Delivery Operations, 4-26-18*

Publications

Publication 431 Revision: Changes to Post Office Box Service and Caller Service Fee Groups

Effective April 26, 2018, Publication 431, *Post Office Box Service and Caller Service Fee Groups*, is revised to include the following changes.

Publication 431, *Post Office Box Service and Caller Service Fee Groups*

* * * * *

[Delete the following entries:]

ZIP Code	Fee Group
00954	33
48111	5
48116A	36
48260	35
48265	35
48266	35
48268	35
48272	35
48275	35
48279	35
49281	7
49855A	34
76196	33
76197	33
76198	33
76199	33

* * * * *

The online version of Publication 431 is dated July 2013. Publication 431 is currently available on the Postal Service™ PolicyNet website (blue.usps.gov/cpim):

- Go to blue.usps.gov.
- In the left-hand column under “Essential Links,” click *PolicyNet*.
- Click *PUBs*.

Offices with WebBATS Manager/Supervisor access can view current Publication 431 information by going to the WebBATS Edit Facility Information page, as follows:

1. Go to the WebBATS main menu, and select Utility> Facility>Edit Facility option.
2. View the Fee Group field on the Edit Facility Information page.

— *Retail Operations, Retail and Customer Service Operations, 4-26-18*

Organization Information

Information Security

Protect the Network — Separate for Security

While you may be tempted to charge a personal device or cell phone using your computer’s USB port, doing so violates U.S. Postal Service® policy and could leave the network vulnerable to a cyber intrusion.

When a smart mobile device (e.g., phone, tablet, or wearable technology) is plugged into a computer’s USB port, the two devices can exchange information or malware.¹ This could put sensitive information into the wrong hands and potentially affect Postal Service™ business.

To prevent a cyber intrusion, follow these important tips when charging a mobile device:

- **Use a wall outlet.** Charge personal devices by plugging them into an electrical outlet in an approved location.
- **Use a portable charger.** Personal charging blocks and battery cases can also help extend battery life.
- **Avoid public charging stations.** Cyber criminals may tamper with public charging stations, such as those found at airports, by installing malicious software.² Plugging devices into a public charging station can also jeopardize privacy by making sensitive personal data potentially accessible to cyber criminals.³

Careless charging isn’t the only way to put the Postal Service at risk. When transferring information between USPS® computers, only use USPS-approved flash drives or hard drives. Visit blue.usps.gov/cyber/utilize-encryption.htm for a full list of approved devices that safely share data.

The Postal Service is committed to handling the public’s information with care. Keeping personal mobile devices separate from USPS computers helps prevent a potential security incident (see Handbook AS-805, *Information Security*, section 5-5, for further guidance).

To report a cybersecurity incident, send an email to CyberSafe@usps.gov or call 877-876-2455. For more information, visit the CyberSafe at USPS® websites on *Blue* (blue.usps.gov/cyber) and *LiteBlue* (liteblue.usps.gov/cyber), or the public-facing website at uspscybersafe.com.

— Corporate Information Security Office,
Chief Information Security Officer
and Digital Solutions, 4-26-18

Mailing and Shipping Services

Mail Alert

The mailings below will be deposited in the near future. Offices must process this mail according to applicable service standards with the in-home dates in mind. Mailers wishing to participate in these alerts, for mailings of 1 mil-

lion pieces or more, must contact Business Service Network Integration at 202-268-3258 at least 1 month before the requested delivery dates.

Requested Delivery Dates	Title of Mailing	Class and Type of Mail	Number of Pieces (Millions)	Distribution	Presort Level	Comments
05/14/18–05/17/18	Ginny’s	Standard Catalog	1.0	Nationwide	3/5 Digit	Quad Graphics
05/16/18–05/19/18	Montgomery Ward	Standard Catalog	1.0	Nationwide	3/5 Digit	Quad Graphics

— Business Customer Support and Services, Sales and Customer Relations, 4-26-18

1. Souppaya, M, and Scarfone, K. “Guidelines for Managing the Security of Mobile Devices in the Enterprise,” NIST Special Publication 800-124, Revision 1, June 2013: nist.gov/publications/guidelines-managing-security-mobile-devices-enterprise?pub_id=913427.

2. Biersdorfer, J.D., “The Risk in Using a Public Phone Charger,” *The New York Times*, May 2017: nytimes.com/2017/05/10/technology/personaltech/the-risk-in-using-a-public-phone-charger.html.

3. New York Institute of Technology. “Your phone’s power use can give hackers an opening,” *ScienceDaily*, April 2017: sciencedaily.com/releases/2017/04/170412091534.htm.



332

Number of USPS employees
featured in *Link's* "Heroes' corner"
column during 2017

Pull-Out Information

Fraud

Invalid USPS Corporate Account Numbers

Provide this listing to Contract Postal Units and acceptance clerks in non-POS locations without intranet access to validate a USPS Corporate Account (USPSCA) number online. For all other locations, online USPSCA validation is preferred. This list supersedes all previous notices, which you must recycle.

Acceptance clerks must not accept Priority Mail Express® shipments bearing an invalid USPSCA number in the "Payment by Account" or "Agreement Number" section of the label or form.

Note: The first 6 digits of a 9-digit Custom Designed Service and Next Day Pickup Agreement make up the Corporate Account Number.

006400	018714	030436	077256	117262	306257	402135	530032	532675	731559	841360	907009	981879
006624	018729	043303	077777	117483	309011	430136	530033	532731	731633	841361	907407	981881
008078	018741	048201	078041	121273	314978	431068	530035	532765	740800	841362	907842	982101
008137	018775	051047	079146	130027	317348	432519	530037	532766	743036	841363	913187	982236
008265	018845	055188	080164	142002	320001	432776	530039	537212	743075	841365	913666	982385
008329	018917	055211	080706	142023	320040	441356	530040	537375	750091	843009	913881	982452
008437	018927	057063	088373	142050	320738	441947	530041	537418	750393	843011	914284	982487
008496	019001	057084	088666	142093	322008	445071	531158	542270	750620	844008	916026	982653
008604	019016	060001	089317	142432	322522	450229	531339	543720	752196	846014	921352	982661
008740	019069	060083	089643	152043	326017	451011	531359	544005	752208	846015	921827	982670
009723	019075	060113	090118	156117	328018	452442	531432	553018	752895	846016	924628	982684
010630	019090	060200	096667	165106	330177	462047	531503	553021	757156	846017	926051	982704
011173	019175	060548	097172	165180	331218	464118	531505	553124	770036	847028	926303	983106
011403	019254	061584	097250	165306	331283	464193	531644	553350	770887	847029	930337	984264
018039	019301	064580	098143	192628	331850	480096	531718	554095	771323	847030	931738	985240
018111	019308	064910	098835	197137	332990	480115	531778	554210	775048	847031	935130	992564
018112	019338	066406	100610	198009	333662	483223	531779	554405	775057	851055	935241	992753
018113	019404	067216	100656	200906	334215	483751	531806	570204	775308	852926	937358	992768
018149	019459	067245	100997	207386	334663	483990	531810	571151	776012	852928	940153	992779
018163	019468	068364	101489	208294	335317	490046	531829	600004	778357	853729	941210	995017
018164	019494	069077	104194	210414	335878	490635	531831	600449	786126	853998	941802	995468
018257	019515	069816	105552	220160	336297	496184	531845	600641	793062	884101	948421	995602
018299	019518	070057	105998	221127	337261	503132	531852	600740	800003	895973	949374	995677
018302	019520	070070	106020	221193	339071	507005	531867	601613	802036	900195	949502	995751
018306	019527	070742	106299	222303	339284	522001	531881	607482	802072	900492	950049	995934
018336	019655	071335	108177	235435	339701	527005	531882	608516	806126	901073	950586	995970
018350	019780	071850	108214	240088	340496	530012	531884	641078	833992	901404	951305	997124
018475	019922	075524	108345	272051	347052	530013	532004	660049	836325	901617	952222	997158
018549	021332	075586	108872	274012	352751	530016	532005	665010	840076	902833	968270	997297
018573	028152	075638	109531	282080	354094	530021	532007	666009	840077	902993	971137	998023
018594	028941	076252	109840	296527	362075	530023	532012	670007	840079	903484	972578	
018623	029026	076579	117048	300044	373057	530026	532013	672010	840080	903550	980145	
018627	029217	076826	117166	300559	378110	530027	532102	672261	840081	903840	980170	
018631	029307	077121	117232	301454	381994	530029	532326	731046	841344	904402	980532	
018671	029549	077215	117259	302804	383126	530031	532389	731052	841359	906380	980548	

Missing, Lost, or Stolen U.S. Money Order Forms

Do Not Cash — Upon Receipt, Notify Local Postal Inspectors

Provide this listing to all Postal Service™ employees responsible for accepting and cashing postal money orders. Destroy all interim notices when the numbers listed appear in the *Postal Bulletin*. The new money order serial

numbers consist of the first 9 digits. The tenth digit is a check digit only.

Do not cash outdated money orders **104 151 601 to 692 600 000**. Advise holders to send invalid money orders to Canada Post Corporation, Ottawa, Canada K1A 0B1. Check for altered dollar amounts by holding money orders to the light.

010 001 0200 to 0299	037 931 4660 to 4699	071 179 9800 to 9899	116 986 4400 to 4499
010 504 1932 to 1999	039 145 6521 to 6595	071 386 3682 to 3699	117 175 1647 to 5169
011 582 1889 to 1899	040 024 3901 to 3999	071 507 6840 to 6899	117 951 4687 to 4699
011 588 2900 to 3099	040 674 7100 to 7199	072 045 9641 to 9699	117 951 5200 to 5299
012 441 0784 to 0799	040 688 8816 to 8899	072 675 8287 to 8299	119 786 3051 to 3064
012 579 5675 to 5699	041 299 6752 to 6799	073 763 0867 to 0876	119 815 8961 to 6199
013 289 6176 to 6199	041 623 8889 to 8899	073 763 0878 to 0887	119 850 7400 to 7499
013 610 0014 to 0099	041 803 6565 to 6599	073 763 0889 to 0898	119 850 7700 to 7999
014 932 1000 to 1099	043 129 1968 to 1997	077 617 5481 to 5499	121 634 0460 to 0499
014 972 0800 to 0899	043 205 5922 to 5999	077 999 4001 to 4090	122 451 9879 to 9899
015 363 0065 to 0099	044 087 3457 to 3499	078 174 4475 to 4499	122 714 6805 to 6900
017 028 3200 to 3299	044 087 4000 to 4099	078 219 4931 to 4999	124 916 0304 to 0499
018 569 5333 to 5399	044 226 2487 to 2512	078 250 4756 to 4799	126 423 0136 to 0169
018 986 5264 to 5299	044 306 4200 to 4299	078 823 8312 to 8399	127 500 2328 to 2399
019 518 2814 to 2899	044 306 4370 to 4599	079 374 0300 to 2499	160 901 2254 to 2299
020 698 5159 to 5199	045 524 4121 to 4298	079 807 2342 to 2399	161 103 6581 to 6599
020 844 7307 to 7399	046 800 9870 to 9899	082 721 0228 to 0254	161 194 2857 to 0899
020 972 8948 to 8999	047 352 4000 to 4099	083 140 5000 to 7499	162 032 4447 to 4499
022 021 9110 to 9181	048 383 7650 to 7659	083 784 8886 to 8899	163 257 1085 to 1099
022 037 1411 to 1499	048 396 3647 to 3699	083 913 6915 to 6999	164 359 2406 to 2499
022 527 9201 to 9210	051 142 0755 to 0799	084 478 3920 to 3999	166 101 1433 to 1499
022 529 1882 to 1899	051 774 8857 to 8899	086 000 8271 to 8299	167 555 5201 to 5212
023 637 7169 to 7199	051 781 2875 to 2885	086 798 3840 to 3849	167 555 5214 to 5299
024 380 4100 to 4199	051 977 7010 to 7023	088 404 4472 to 4499	169 618 6274 to 6299
024 496 6870 to 6896	052 058 7115 to 7199	088 404 5584 to 5699	171 806 6878 to 6893
025 092 0987 to 0999	054 450 1130 to 1167	088 757 8688 to 8699	173 639 4685 to 4699
025 369 5535 to 5599	057 670 0563 to 0599	088 757 9400 to 9499	174 238 2779 to 2799
025 729 1151 to 1199	058 187 3836 to 3899	089 358 2248 to 2257	174 281 9347 to 9399
025 729 1643 to 1799	058 523 3003 to 3099	090 663 9678 to 9684	175 251 2600 to 0699
026 492 3180 to 3199	058 591 1153 to 1299	091 818 0071 to 0099	176 281 7937 to 7950
027 361 0430 to 0499	058 895 3746 to 3799	093 106 9346 to 9355	176 281 7963 to 7999
027 369 4482 to 4495	059 986 0814 to 0899	093 203 0500 to 0599	176 731 6586 to 6599
027 671 8762 to 8776	060 406 7650 to 7699	093 684 3630 to 3699	178 254 5000 to 9999
027 787 9886 to 9899	063 491 8122 to 8199	094 081 5074 to 5099	178 881 9900 to 9999
027 965 9487 to 9499	063 916 9968 to 9999	094 216 2555 to 2599	180 031 2089 to 2098
028 100 8069 to 8099	064 091 4500 to 4599	094 580 7062 to 7099	180 403 7723 to 7741
028 191 1852 to 1999	065 170 0471 to 0499	094 639 4200 to 4299	180 428 4580 to 0599
028 850 3000 to 3199	065 255 7909 to 7999	095 070 7186 to 7199	182 368 7544 to 0599
029 510 1500 to 1599	065 392 6345 to 6399	095 076 8300 to 8399	182 475 3229 to 3258
030 687 0903 to 0999	066 099 2014 to 2099	095 354 6864 to 6899	182 475 3904 to 3933
030 701 3442 to 3499	066 648 2880 to 2899	097 224 1350 to 1599	182 631 0031 to 0099
031 077 4507 to 4799	066 787 3639 to 3699	100 160 3800 to 3899	182 911 6539 to 6600
032 295 7500 to 9999	066 845 7500 to 9999	104 667 6400 to 6499	184 218 2760 to 2799
034 394 1000 to 1099	067 093 3869 to 3899	104 876 8937 to 8999	185 828 1474 to 1499
034 943 0400 to 0799	068 895 0334 to 0399	112 049 4413 to 4499	186 132 7583 to 0599
035 035 4337 to 4399	070 724 4488 to 4499	112 870 9765 to 9799	186 629 0589 to 0599
037 312 7500 to 7599	070 841 9181 to 9199	113 319 2000 to 2099	187 184 6177 to 0199
037 706 9578 to 9599	070 844 2546 to 2599	114 402 3850 to 3899	187 323 8200 to 8299
037 805 3677 to 3699	070 916 1340 to 1399	114 866 5368 to 5397	187 441 6080 to 6099
037 909 5490 to 5499	071 047 5768 to 5799	116 154 2800 to 2899	188 831 6774 to 6799

188 835 6370 to 6399	228 510 4852 to 4899	389 887 9211 to 9230	408 499 7700 to 7799
189 083 1064 to 1099	229 462 8451 to 8475	389 887 9234 to 9299	408 499 7900 to 7999
189 660 9583 to 9599	229 668 5977 to 5999	390 001 3182 to 3199	408 682 8484 to 8599
191 179 0377 to 0399	229 923 9176 to 9199	390 001 3500 to 3699	408 698 7015 to 7099
192 050 5762 to 5781	229 924 6696 to 6699	390 545 5974 to 5999	409 072 3941 to 3999
194 456 8600 to 0699	230 051 9500 to 9999	391 104 6146 to 6199	410 491 2311 to 2399
195 194 6881 to 6899	236 366 2431 to 2499	391 574 1466 to 1499	410 694 8400 to 8599
195 874 1112 to 1199	236 607 6882 to 6899	391 783 3020 to 3599	410 775 1500 to 1599
196 979 0524 to 0599	236 660 5853 to 5872	391 792 6100 to 6199	410 795 7927 to 7999
197 244 6100 to 6199	239 322 5200 to 5299	392 668 2956 to 2999	410 867 0917 to 0966
197 244 6300 to 6399	239 322 5400 to 5499	392 854 8500 to 8899	410 867 0970 to 0999
197 244 6400 to 6499	239 322 5600 to 5699	393 584 7566 to 7699	411 868 1023 to 1199
197 244 6500 to 6599	239 322 5800 to 5899	393 650 0074 to 0099	411 922 2322 to 2399
197 244 6600 to 6699	239 322 5900 to 5999	393 838 8316 to 8499	412 193 0900 to 0999
197 244 6700 to 6799	239 607 4783 to 4799	393 893 6007 to 6099	412 395 8599 to 8699
197 244 6800 to 8999	240 593 1879 to 1899	394 126 6907 to 6999	412 485 6500 to 6599
198 285 2556 to 2566	242 591 2048 to 2099	394 189 0405 to 0599	412 485 6610 to 6699
199 105 0778 to 0799	242 735 0388 to 0398	394 822 3243 to 3278	412 885 5953 to 5999
199 678 2968 to 2999	242 951 7276 to 7299	394 990 1810 to 1899	414 193 3608 to 3674
202 748 5133 to 5199	243 535 6370 to 6399	395 343 3264 to 3299	414 193 3677 to 3699
202 748 5245 to 5299	244 004 9985 to 9999	395 373 3035 to 3099	414 411 7348 to 7399
202 748 5300 to 5399	244 004 9985 to 9999	395 396 9649 to 9799	414 640 0757 to 0799
202 748 5400 to 5499	244 347 4471 to 4499	395 970 3240 to 3299	414 965 1727 to 1799
203 256 1240 to 1299	273 775 7700 to 7899	397 622 4054 to 4099	417 302 8104 to 8199
204 230 3577 to 3595	302 000 0000 to 9999	397 819 8902 to 8999	417 387 6532 to 6599
205 019 0174 to 0199	349 746 2056 to 2099	398 149 7200 to 7699	417 496 6800 to 6999
207 196 9900 to 9999	350 518 7350 to 7374	399 070 0872 to 0899	417 871 9250 to 9299
207 204 0700 to 0799	360 011 1690 to 1699	399 156 7119 to 7199	417 930 9533 to 9599
207 204 0800 to 0899	360 168 6008 to 6099	399 203 5064 to 5099	418 164 6500 to 6799
207 514 3857 to 3899	360 173 8800 to 8899	399 296 9910 to 9999	418 423 9863 to 9899
208 556 4707 to 4799	360 324 2326 to 2399	399 396 8935 to 8999	418 633 5922 to 5999
210 057 4038 to 4047	362 861 3064 to 3099	399 792 7775 to 7799	418 719 8520 to 8599
210 221 0548 to 0599	373 006 2176 to 2199	399 792 8300 to 8399	418 744 2235 to 2299
214 061 4711 to 4724	374 768 2600 to 2699	400 427 1051 to 1999	418 962 2848 to 2899
214 303 6311 to 6325	375 169 4400 to 4599	401 045 1505 to 1549	419 543 0286 to 0299
214 303 6239 to 6258	375 829 3400 to 3499	401 045 1571 to 1599	419 730 0300 to 0399
214 877 4251 to 4273	375 851 9100 to 9199	401 294 2700 to 2799	420 277 0015 to 0049
215 252 3918 to 3992	376 196 0911 to 0999	401 310 9505 to 9599	420 599 0734 to 0798
218 698 2157 to 2199	378 085 3679 to 3699	401 382 5312 to 5399	420 661 4115 to 4199
218 746 0800 to 0899	378 351 1063 to 1099	402 578 7876 to 7899	420 758 9500 to 9699
219 095 0100 to 0399	379 843 5100 to 5199	403 125 6744 to 6799	420 969 3951 to 3971
219 389 1885 to 1899	380 093 9600 to 9699	403 260 7000 to 7499	420 969 3973 to 3999
219 568 7435 to 7456	380 165 1165 to 1199	403 280 6470 to 6499	421 116 3565 to 3599
219 568 7469 to 7487	381 325 4500 to 4599	403 685 8600 to 8699	421 130 9300 to 9399
221 316 5757 to 5799	381 604 2510 to 2699	404 003 0300 to 0399	421 313 4500 to 4999
223 476 3914 to 3999	381 645 9525 to 9599	404 041 8838 to 8899	421 364 5537 to 5599
223 565 4921 to 4957	383 314 3968 to 3999	404 071 4268 to 4299	421 656 2609 to 2699
223 565 4979 to 4999	383 892 1000 to 1344	404 347 5356 to 5399	421 988 9700 to 9799
224 636 4745 to 4765	383 892 1382 to 1399	404 347 5548 to 5599	422 172 4667 to 4699
224 636 4776 to 4799	384 925 3641 to 3654	404 726 4500 to 4599	422 484 4212 to 4299
224 636 4855 to 4885	385 568 2331 to 2399	404 961 5001 to 5199	422 556 1270 to 1299
224 636 4932 to 4948	385 599 7554 to 7575	405 325 0188 to 0198	422 587 7024 to 7099
224 636 4950 to 4962	385 774 2024 to 2099	406 009 4587 to 4599	422 819 7533 to 7599
224 636 4985 to 4999	386 624 1412 to 1599	406 260 6830 to 6899	422 842 5073 to 5087
224 730 2207 to 2299	386 883 8936 to 8999	406 459 6641 to 6999	422 907 7563 to 7599
225 970 0500 to 0599	387 314 5574 to 5599	406 733 3000 to 3999	424 500 6050 to 6099
225 970 0600 to 0699	387 837 6300 to 6399	407 545 1557 to 1599	424 641 8500 to 8599
225 970 0700 to 0799	388 828 0656 to 0699	407 594 0412 to 0599	424 871 6600 to 6699
227 033 8679 to 8699	389 696 2400 to 2799	407 692 9100 to 9299	425 298 2352 to 2399
227 275 9400 to 9999	389 846 3104 to 3135	407 959 2190 to 2199	425 418 4269 to 4299
228 463 2456 to 2499	389 846 3145 to 3195	408 265 2275 to 2288	425 418 4405 to 4499

426 547 4566	to	4599	453 603 7841	to	7891	469 213 0500	to	0599	484 323 8900	to	9199
427 412 6337	to	6499	453 650 1140	to	1199	469 561 8011	to	8099	484 680 5000	to	5038
427 481 0900	to	0999	453 741 1300	to	1399	469 658 1961	to	1999	484 680 5040	to	5074
428 027 2742	to	2752	454 013 2919	to	2999	469 666 9900	to	9999	484 680 5077	to	5099
429 474 4172	to	4199	454 186 2411	to	2499	469 678 1900	to	1999	485 029 4913	to	4999
429 889 2900	to	2999	454 268 4883	to	4899	469 781 4900	to	4999	486 176 0600	to	0699
430 150 4401	to	4599	454 302 5400	to	5499	469 947 6960	to	6999	486 559 7555	to	7599
430 172 9800	to	9899	454 490 8300	to	8399	470 755 5800	to	5818	486 696 3023	to	3199
430 177 1900	to	2099	454 547 7434	to	7499	471 918 0300	to	0999	488 173 7900	to	7999
430 444 9500	to	9699	454 922 4867	to	4895	471 985 2408	to	2419	488 206 4100	to	4199
430 664 4070	to	4099	455 221 1348	to	1499	472 191 6700	to	6799	488 226 0200	to	0299
432 168 8419	to	8499	455 364 2147	to	2199	472 270 2555	to	2599	488 709 3906	to	3999
432 708 6800	to	6999	455 399 5400	to	5499	472 987 0213	to	0241	488 855 8359	to	8399
432 744 1544	to	1599	455 476 0676	to	0699	472 987 0290	to	0299	489 181 8963	to	8999
432 995 9775	to	9799	455 543 0618	to	0699	473 151 2069	to	2199	489 223 2000	to	2099
433 003 5800	to	5899	456 410 9006	to	9099	473 666 9138	to	9199	489 311 1930	to	1999
433 757 3047	to	3099	456 470 4146	to	4299	473 952 3429	to	3499	489 318 6200	to	6300
433 765 4003	to	4099	456 619 4460	to	4499	474 108 5402	to	5499	489 384 0027	to	0099
434 482 7060	to	7199	457 333 2686	to	2699	474 356 5193	to	5299	489 427 0658	to	0899
434 513 2386	to	2399	457 729 1767	to	1777	474 949 3366	to	3399	489 997 5252	to	5299
434 968 3076	to	3092	457 937 8615	to	8699	475 134 9362	to	9399	490 669 5850	to	6099
435 303 1831	to	1842	458 028 9810	to	9899	475 167 9667	to	9699	490 717 7080	to	7099
435 303 1986	to	1999	458 057 2712	to	2999	475 319 3415	to	3499	490 721 6000	to	6099
435 666 6092	to	6399	458 069 9537	to	9599	475 319 3649	to	3799	490 793 1500	to	2099
436 082 6400	to	6899	458 069 9665	to	9699	475 340 6400	to	6599	490 886 8171	to	8199
436 160 6441	to	6499	458 337 5222	to	5299	475 424 8410	to	8499	490 977 9221	to	9240
437 316 7115	to	7199	458 354 7653	to	7999	475 629 9156	to	9199	491 258 8100	to	9099
437 427 0500	to	3499	458 671 8678	to	8699	475 850 6101	to	6199	491 567 1376	to	1399
439 179 2300	to	2399	458 671 8721	to	8798	475 875 2500	to	2599	492 254 4800	to	4899
439 310 0458	to	0499	458 847 5044	to	5999	476 169 8264	to	8299	492 283 5100	to	5199
440 698 1947	to	1999	459 274 7624	to	7699	476 189 3000	to	3499	492 610 6813	to	6899
440 858 6300	to	6399	459 365 5432	to	5499	476 331 2480	to	2499	493 394 5568	to	5599
440 858 6420	to	7299	459 378 5764	to	5799	477 289 8601	to	8699	493 470 2562	to	2599
441 199 1655	to	1699	459 472 4816	to	4999	477 681 5206	to	5299	493 473 7700	to	7799
443 127 3648	to	3699	460 349 6878	to	6899	478 010 4243	to	4268	493 716 2153	to	2199
443 127 4000	to	4099	460 550 1909	to	1999	478 010 4270	to	4291	494 206 2972	to	2999
443 673 7900	to	7999	460 997 5234	to	5299	478 450 5071	to	5099	494 217 3446	to	3999
443 800 9335	to	9399	461 973 6443	to	6499	478 469 7838	to	7858	494 224 0500	to	0599
444 382 8822	to	8899	462 152 0107	to	0299	478 469 7883	to	7899	495 145 0600	to	0699
444 390 1667	to	1699	462 274 1072	to	1099	479 280 9800	to	9899	496 209 7425	to	7499
444 457 3854	to	3899	462 277 8373	to	8399	479 365 9116	to	9176	496 213 8728	to	8799
450 048 4173	to	4199	462 554 6051	to	6099	479 412 9900	to	9999	496 474 5226	to	5248
450 048 4442	to	4699	463 011 5529	to	5540	479 667 6190	to	6199	497 053 8517	to	8699
450 560 5173	to	5199	463 176 4115	to	4199	479 748 9680	to	9699	497 854 8673	to	8699
450 620 3077	to	3099	463 176 4229	to	4299	479 860 7000	to	7199	498 449 8888	to	8899
450 620 3135	to	3199	463 185 2600	to	2799	480 526 2000	to	2099	498 929 8285	to	8499
450 780 2716	to	2799	463 227 7711	to	7799	480 640 6330	to	6399	498 936 5310	to	5399
450 801 2700	to	2799	463 414 4869	to	4899	480 658 0568	to	0599	499 016 5425	to	5499
451 109 2967	to	2984	463 808 3484	to	3499	480 689 5100	to	5199	499 440 8575	to	8899
451 115 4110	to	4125	463 945 7400	to	7899	481 072 9463	to	9499	499 731 6717	to	6799
451 115 4127	to	4199	464 629 9000	to	9399	481 673 0074	to	0095	500 064 1858	to	1869
451 746 0700	to	0799	464 711 4332	to	4399	482 527 1500	to	1599	500 070 5725	to	7799
452 265 0074	to	0099	465 692 3963	to	3999	482 541 5255	to	5299	501 058 0016	to	0026
452 265 0246	to	0299	465 698 8300	to	8599	482 729 6800	to	6899	501 331 0300	to	0399
452 265 0335	to	0999	465 743 7745	to	7799	483 363 7207	to	7299	501 460 0977	to	0999
452 509 1169	to	1199	466 798 6056	to	6067	483 402 2356	to	2399	502 227 7645	to	7699
452 855 6471	to	6499	467 147 4300	to	4399	483 486 5100	to	5199	502 424 0200	to	0499
452 890 4679	to	4799	468 079 5782	to	5799	483 632 1521	to	1599	502 424 0600	to	0699
452 900 8215	to	8238	469 067 2817	to	2899	483 632 2600	to	2799	502 496 6923	to	6999
453 117 9146	to	9199	469 127 8000	to	8199	483 849 1615	to	1699	503 003 2700	to	2899
453 334 3631	to	3699	469 213 0359	to	0399	484 174 4803	to	5299	503 194 5144	to	5153

503 790 9922 to 9948	609 493 1100 to 1199	632 217 4933 to 4999	646 798 4000 to 4999
504 045 4030 to 4099	609 766 8091 to 8999	632 500 0000 to 640 3999	647 048 7035 to 7099
504 166 0200 to 0599	609 825 4100 to 4115	633 110 4165 to 4199	647 049 2900 to 2999
504 240 1062 to 1399	609 884 2981 to 2999	633 110 4303 to 4499	647 398 8300 to 8399
504 805 3300 to 3499	609 893 1000 to 1099	633 438 6429 to 6599	647 398 8481 to 8499
505 096 0662 to 0699	610 092 3200 to 3299	633 588 7173 to 7182	647 437 3000 to 4999
505 893 7739 to 7799	610 582 4200 to 4299	634 725 0700 to 0799	647 811 2188 to 2199
505 893 7800 to 7999	611 879 6939 to 6999	634 803 3239 to 3299	648 009 6057 to 6099
506 124 0800 to 0999	612 291 8013 to 8099	634 807 2474 to 2499	648 163 5300 to 5499
506 165 7027 to 0099	612 751 5171 to 5199	634 827 5900 to 5999	648 722 5283 to 5299
506 502 5209 to 5299	612 751 5226 to 5299	634 886 3428 to 3499	648 892 3164 to 3199
506 756 1682 to 1699	612 751 6083 to 6099	635 559 3449 to 3499	649 100 3989 to 3999
506 756 1700 to 1799	612 751 6268 to 6299	636 289 6214 to 6299	649 647 0370 to 0399
506 756 1800 to 1899	612 751 6572 to 6599	636 634 8007 to 8042	649 647 0522 to 0599
506 836 5326 to 5399	612 774 2111 to 2199	637 150 1200 to 1299	649 647 5237 to 5399
508 488 6226 to 6299	612 774 2254 to 2299	637 562 5828 to 5899	649 647 9100 to 9299
508 789 8332 to 8399	612 774 2500 to 2599	638 042 1647 to 1699	649 666 7800 to 8299
508 789 8400 to 8499	614 469 0979 to 0999	638 049 4984 to 4999	650 114 7707 to 7719
509 909 0425 to 0435	614 474 3000 to 3099	638 318 1115 to 1199	650 130 3400 to 3599
510 150 2400 to 2499	614 521 3490 to 3499	638 318 1453 to 1499	650 213 0406 to 0499
510 381 3200 to 3299	614 645 1800 to 1899	638 885 0000 to 0299	650 555 1749 to 1799
510 587 9500 to 9599	614 832 1100 to 2099	638 903 4362 to 4373	650 564 1900 to 1999
510 587 9659 to 9699	615 017 7505 to 7599	639 415 1929 to 1999	650 627 4212 to 4299
510 269 9770 to 9999	617 711 6609 to 6699	639 415 2019 to 2099	650 736 2043 to 2099
511 021 5042 to 5099	617 760 5266 to 5299	639 420 6200 to 6299	650 739 1540 to 1699
511 021 5100 to 5199	617 813 3601 to 3699	639 469 3517 to 3799	651 741 4415 to 4499
511 468 1747 to 1799	618 840 9200 to 9299	639 605 2143 to 2199	651 882 2800 to 2899
511 844 0100 to 0199	619 551 7229 to 7299	639 657 8600 to 8799	652 754 6317 to 6399
511 844 0340 to 0399	619 859 3000 to 3099	640 289 7500 to 7599	653 131 4945 to 4999
600 645 3223 to 3299	620 073 9400 to 9499	640 289 7700 to 7999	653 426 3300 to 3399
601 339 1200 to 1399	621 614 7907 to 7930	641 170 4420 to 4499	653 455 4874 to 4899
601 653 5884 to 5899	621 614 7932 to 7999	641 318 3133 to 3199	654 238 0000 to 0399
601 661 7700 to 7799	621 648 8021 to 8199	641 378 6500 to 6999	654 404 3065 to 3092
601 682 5343 to 5399	621 648 8500 to 8599	641 383 8739 to 8799	654 962 2900 to 3199
601 928 1600 to 1699	621 904 8351 to 8599	641 877 3187 to 3299	655 103 5081 to 5199
602 512 2972 to 2999	621 916 1978 to 1989	641 877 3310 to 3399	655 523 2600 to 2999
602 555 2400 to 2799	622 989 8032 to 8099	642 355 8094 to 8199	656 305 2448 to 2499
602 829 7061 to 7099	623 076 9300 to 9399	642 355 8308 to 8999	657 347 4438 to 4999
603 483 9572 to 9599	623 819 5006 to 5099	642 900 0018 to 0099	657 710 8100 to 8999
603 490 7200 to 7299	623 895 8200 to 8399	643 030 6254 to 6299	657 780 0985 to 0999
603 678 7100 to 7199	623 917 0000 to 0099	644 066 0882 to 0899	658 586 1400 to 1499
603 678 7662 to 7699	623 917 0200 to 0299	644 069 0600 to 0699	658 877 8000 to 8199
603 678 7902 to 7999	624 468 5288 to 5299	644 077 7506 to 7699	658 880 8000 to 8199
603 678 8418 to 8499	624 665 3162 to 3198	644 085 8157 to 8199	659 398 7300 to 7399
603 678 8700 to 9999	625 088 6735 to 6799	644 112 9839 to 9899	659 706 8113 to 8199
604 086 0880 to 0899	625 916 9500 to 9799	644 373 9083 to 9099	659 846 7837 to 7899
604 349 1414 to 1499	625 968 8956 to 8999	644 380 1460 to 1499	660 510 4100 to 4199
604 503 7776 to 7799	627 005 3938 to 3999	644 733 4715 to 4799	660 673 0400 to 0599
605 520 9037 to 9099	627 384 3907 to 4099	644 900 9712 to 9799	661 488 5000 to 5099
605 685 4010 to 4099	627 496 7549 to 7599	644 901 0109 to 1299	661 609 9100 to 9199
605 988 6467 to 6499	627 708 3605 to 3699	644 901 1325 to 1399	661 716 9420 to 9499
607 689 7951 to 7960	627 776 2500 to 2599	644 923 6800 to 7799	661 906 6522 to 6599
607 728 1276 to 1299	628 226 3100 to 3199	644 932 4655 to 4699	662 021 8332 to 8399
608 727 7100 to 7199	628 814 4702 to 4799	645 318 7240 to 7499	662 068 0700 to 0899
608 727 7273 to 7599	628 851 9689 to 9699	645 333 1766 to 1799	662 553 0774 to 0799
608 813 9950 to 9999	629 510 7200 to 7299	645 790 8632 to 8699	663 078 7034 to 7099
609 067 5325 to 5399	629 964 4200 to 4294	645 821 0657 to 0699	663 763 5300 to 5399
609 067 5488 to 5499	630 389 3056 to 3071	645 930 7948 to 7999	663 883 7039 to 7499
609 067 5600 to 5699	630 463 0588 to 0599	645 975 0737 to 0762	663 938 9200 to 9299
609 289 6123 to 6199	631 459 9117 to 9199	646 242 6200 to 6299	664 253 8000 to 8499
609 438 4400 to 4499	631 762 9325 to 9399	646 270 7639 to 7799	664 656 3055 to 3099

665 174 6400	to 6499	690 788 2877	to 2899	702 821 5805	to 5899	808 325 5161	to 5699
665 274 8208	to 8299	690 893 5344	to 5399	702 844 6975	to 6994	808 784 8000	to 8299
665 669 5400	to 5499	690 893 5512	to 5599	702 846 6331	to 6399	830 125 0672	to 0699
666 132 8226	to 8299	690 904 1300	to 1599	702 848 3900	to 3999	830 602 5800	to 5999
666 696 2209	to 2299	690 941 6000	to 6199	702 857 7302	to 7499	830 610 3700	to 3799
666 696 2309	to 2399	691 313 6383	to 6399	702 878 0114	to 0199	830 983 3500	to 3599
667 032 9300	to 9399	691 313 6600	to 6699	703 364 1707	to 1799	830 983 3635	to 3699
667 729 5529	to 5599	691 582 8003	to 8099	740 002 7710	to 7719	831 354 1387	to 1399
668 383 8400	to 8699	691 664 1800	to 1999	740 037 6730	to 6800	831 815 8240	to 8299
670 368 3400	to 3499	691 664 2400	to 2499	740 119 2275	to 2284	832 525 3810	to 3899
670 369 7336	to 7399	692 727 9362	to 9399	740 130 6688	to 6698	833 159 1884	to 1899
670 750 7169	to 7199	692 798 1800	to 1899	740 144 2780	to 2795	833 456 2567	to 2599
671 046 6200	to 6399	693 249 0779	to 0799	740 241 9049	to 9099	833 566 3015	to 3071
671 251 5448	to 5499	693 249 0877	to 1699	740 252 9265	to 9294	834 130 5200	to 5299
671 926 5600	to 5799	693 445 0566	to 0999	740 255 1718	to 1799	834 316 5444	to 5499
672 444 2000	to 2999	693 448 8500	to 8999	740 274 2602	to 2619	834 354 8747	to 8766
672 828 3410	to 3499	693 645 9583	to 9599	740 277 0366	to 0392	834 354 8824	to 8838
673 167 5776	to 5799	693 965 4200	to 4299	740 332 7658	to 7671	835 269 5700	to 5799
675 464 3700	to 3799	695 741 2906	to 2999	740 348 6641	to 6658	835 496 7303	to 7399
675 464 4000	to 4199	695 947 8518	to 8599	740 351 4790	to 4799	835 539 5200	to 5999
676 365 5958	to 5999	696 662 8247	to 8299	740 374 7416	to 7499	835 813 3015	to 3099
676 669 1024	to 1099	697 447 8285	to 8296	740 470 2420	to 2443	837 672 8967	to 8999
677 126 6734	to 6799	698 042 4816	to 4899	740 514 0300	to 0499	837 784 3282	to 3299
677 333 9979	to 9999	698 131 2138	to 2157	740 523 7432	to 7449	838 176 8377	to 8399
677 466 1088	to 1099	698 227 0000	to 0099	740 535 1555	to 1580	838 518 1257	to 1299
678 071 4500	to 4799	700 065 2570	to 2599	740 557 3570	to 3579	839 718 8257	to 8299
678 096 7531	to 7599	700 065 4800	to 4899	740 650 4104	to 4140	840 323 0600	to 0699
679 909 2578	to 2599	700 190 3350	to 3359	740 684 0620	to 0800	840 875 6235	to 6299
680 112 9565	to 9599	700 228 6048	to 6099	740 701 6105	to 6114	840 910 0900	to 0999
680 244 0903	to 0999	700 650 0452	to 0499	740 705 9790	to 9799	841 349 5000	to 5099
680 412 6046	to 6099	700 666 1323	to 1349	740 726 6400	to 6500	841 805 7747	to 7899
680 761 6800	to 6899	700 786 9106	to 9142	740 748 8319	to 8329	841 805 7944	to 8099
681 677 0540	to 0699	700 859 0744	to 0758	740 765 3306	to 3399	842 226 0685	to 0695
682 070 1029	to 1099	701 028 6780	to 6899	740 774 8434	to 8499	842 685 4600	to 4699
682 956 6280	to 6299	701 213 3900	to 3999	740 779 4259	to 4299	842 685 4742	to 4999
682 956 6490	to 6599	701 267 2000	to 3999	740 786 1885	to 1899	842 860 0300	to 0399
682 956 6700	to 6799	701 335 7312	to 7399	740 790 5989	to 5999	842 898 5582	to 5599
682 965 1178	to 1199	701 369 2005	to 2050	740 803 4870	to 4879	843 062 7100	to 7199
682 965 1201	to 1299	701 499 2260	to 2299	740 820 4854	to 7836	843 077 6288	to 6299
683 118 2389	to 2399	701 503 2247	to 2299	740 827 7578	to 7594	843 077 6378	to 6399
683 378 2000	to 2099	701 541 2271	to 2299	740 917 7490	to 7499	843 758 5769	to 5778
683 378 2117	to 2299	701 553 6557	to 6599	740 918 5531	to 5549	843 786 2554	to 2699
683 415 1200	to 1499	701 578 7460	to 7469	741 037 8528	to 8551	845 656 8165	to 8199
683 444 8159	to 8199	701 578 7475	to 7499	742 030 6135	to 6149	845 727 2100	to 2199
685 154 7780	to 7789	701 601 3457	to 3499	742 033 2663	to 2674	845 746 2618	to 2635
685 297 7645	to 7699	701 605 5913	to 5999	742 040 3300	to 3309	846 390 7531	to 7599
685 623 5264	to 5299	701 695 3982	to 3999	742 151 5000	to 5014	846 918 0572	to 0599
685 650 9487	to 9499	701 695 4148	to 4199	742 191 4640	to 4649	847 237 7690	to 7699
685 669 4200	to 4299	701 695 4227	to 4299	742 192 5210	to 5224	847 284 2481	to 2499
685 757 8452	to 8499	701 708 1741	to 1799	742 222 9200	to 9210	847 374 7055	to 7065
686 071 2694	to 2799	701 736 3966	to 3999	742 228 9660	to 9669	847 374 7055	to 7065
686 176 3333	to 3354	701 772 0870	to 0899	742 247 6980	to 6989	847 636 5304	to 5399
686 372 3200	to 3299	701 838 2800	to 2899	742 290 0936	to 0950	847 700 5447	to 5499
686 644 5879	to 5899	701 941 0600	to 0699	742 302 7600	to 7699	847 723 7500	to 7599
686 899 1371	to 1399	702 171 1603	to 1699	805 885 8411	to 8499	849 485 3427	to 3499
686 931 7636	to 7699	702 195 5109	to 5199	806 087 1100	to 1499	849 520 9850	to 9899
687 601 0973	to 0999	702 254 9300	to 9399	806 268 9275	to 9299	849 608 1357	to 1399
687 614 6774	to 6799	702 264 7569	to 7599	806 534 3400	to 3477	849 792 2600	to 2699
688 120 9000	to 9999	702 519 0513	to 0524	807 342 3283	to 3399	850 546 1862	to 1899
688 314 3107	to 3191	702 713 1800	to 1809	808 086 7100	to 7199	851 143 6826	to 6844
690 291 1361	to 1371	702 821 5730	to 5799	808 090 3440	to 3499	851 209 9880	to 9899

851 928 9221	to	9299	869 566 6150	to	6167	910 219 8631	to	8699	920 963 4567	to	4599
852 589 6560	to	6599	869 800 0000	to	999 9999	910 265 1100	to	1199	921 333 7400	to	7499
853 049 3646	to	3699	870 054 4814	to	4899	910 471 7273	to	7299	921 477 3762	to	3799
854 304 4089	to	4999	870 491 4812	to	4849	910 536 2505	to	2599	922 278 1048	to	1399
854 529 2200	to	2299	870 536 5820	to	5829	910 958 7499	to	7599	922 280 2019	to	2099
854 532 0000	to	2999	870 541 7167	to	7239	911 140 1000	to	2199	922 280 2233	to	2299
855 001 6204	to	6249	870 575 8155	to	8999	911 245 2545	to	2599	922 773 0459	to	0499
855 319 9364	to	9399	870 589 0485	to	0494	911 268 9077	to	9099	923 032 7000	to	7399
855 361 3390	to	3399	870 691 7060	to	7099	911 400 8948	to	8999	923 045 3630	to	3699
856 226 0490	to	0499	872 028 4850	to	4899	911 508 1620	to	1799	923 484 3600	to	3699
856 656 5800	to	5999	872 029 9306	to	9399	911 509 9310	to	9399	923 493 9403	to	9599
856 752 0200	to	0299	872 078 3709	to	3799	911 523 3000	to	3999	923 493 9681	to	9699
857 111 1352	to	1399	872 100 0445	to	0459	912 057 9922	to	9999	923 604 4424	to	4499
857 279 3450	to	3499	900 556 4178	to	4199	912 882 0563	to	0899	923 810 7800	to	8299
857 843 4000	to	4099	900 845 0044	to	0099	913 605 2218	to	2299	924 252 1200	to	1299
858 124 7644	to	7699	900 936 0217	to	0299	913 709 2429	to	2499	924 252 1400	to	1499
858 756 3111	to	3299	900 936 0435	to	0499	913 818 3501	to	3999	924 533 0711	to	0799
859 063 8200	to	8699	901 058 5255	to	5280	914 063 4300	to	4399	924 533 2343	to	2399
859 190 0600	to	0644	901 273 1082	to	1099	914 346 7621	to	7644	924 533 2428	to	2499
859 437 5538	to	5599	901 287 5143	to	5199	914 453 1366	to	1399	924 685 1957	to	1999
859 811 2888	to	2899	901 291 2789	to	2799	914 529 6185	to	6299	924 946 6300	to	6699
859 855 8873	to	8999	901 525 7122	to	7199	914 896 4658	to	4699	925 333 5900	to	6099
860 240 8520	to	8599	902 089 1253	to	1299	915 187 8774	to	8779	925 336 2300	to	2399
860 275 3900	to	3999	902 198 9769	to	9799	915 300 2783	to	2799	926 432 5907	to	5999
860 518 9629	to	9699	902 948 1269	to	1299	915 546 6822	to	6999	926 436 3600	to	3699
860 600 0021	to	0999	902 985 0833	to	0899	915 646 5183	to	5199	927 765 6257	to	6299
861 158 2350	to	2599	903 370 6934	to	6999	915 671 3963	to	3980	928 197 8100	to	8199
861 367 5400	to	5499	904 600 6523	to	6599	915 671 3982	to	3999	928 197 8283	to	8299
861 637 6010	to	6099	904 892 0378	to	0399	915 675 2217	to	2299	928 856 2059	to	2068
861 979 7292	to	7499	904 892 0648	to	1299	916 440 3377	to	3399	930 078 5800	to	5899
862 216 6100	to	6199	905 056 2216	to	2299	916 670 6352	to	6399	930 219 1722	to	1799
862 263 9213	to	9299	905 510 6647	to	6799	916 682 5300	to	5399	930 335 7810	to	7819
862 271 0800	to	0999	905 510 6900	to	7099	916 694 1414	to	1499	931 097 9259	to	9299
862 271 5000	to	5099	905 794 0000	to	0199	916 703 0802	to	0821	931 156 1502	to	1579
863 871 5138	to	5199	905 794 0288	to	0299	917 089 0709	to	0799	931 156 1600	to	1625
863 949 5300	to	5399	905 873 6900	to	6999	917 089 0842	to	0899	931 156 1671	to	1699
864 088 8200	to	8299	905 873 7100	to	7299	917 216 2928	to	2999	932 506 6400	to	6599
864 426 3972	to	3999	905 880 8900	to	8999	917 370 6300	to	6499	932 732 1796	to	1799
864 520 6117	to	6136	905 889 7100	to	7199	917 486 4900	to	4999	932 827 9026	to	9099
865 151 0526	to	0599	906 158 1508	to	1599	918 460 0602	to	0699	932 957 2300	to	2399
865 500 4034	to	4099	906 558 8812	to	8899	918 951 7231	to	7299	933 060 6160	to	6189
865 883 6082	to	6099	906 982 2214	to	2299	919 519 2786	to	2799	933 387 2541	to	2561
866 004 3000	to	3999	907 725 8500	to	8599	919 536 0770	to	0799	933 760 3609	to	4199
866 442 4100	to	4899	907 815 0216	to	0257	919 814 3095	to	3199	933 894 0928	to	0999
867 366 9108	to	9118	908 622 4225	to	4235	919 889 5110	to	5134	934 018 2729	to	2741
867 633 7403	to	7499	908 936 9254	to	9299	919 889 5137	to	5176	934 180 0300	to	0399
867 737 5623	to	5699	909 066 4494	to	7499	919 889 5178	to	5199	934 236 3954	to	3999
868 169 4529	to	4599	909 067 7400	to	7499	919 889 5030	to	5070	934 622 8717	to	8999
868 173 8400	to	8599	909 100 1787	to	1799	919 889 5090	to	5099	935 216 0312	to	0399
868 514 9000	to	9099	909 100 1900	to	2099	919 915 2774	to	2787	935 843 2202	to	2247
868 566 9200	to	9299	909 355 0422	to	0499	920 155 4662	to	4687	936 024 8889	to	8899
869 200 0000	to	9999	909 568 8900	to	9099	920 309 9039	to	9199	936 339 4455	to	4499
869 387 1150	to	1199	909 568 9300	to	9499	920 771 5321	to	5399			
869 505 3500	to	3599	909 725 7307	to	7399	920 857 5500	to	5899			
869 523 7033	to	7099	909 833 0947	to	0999	920 864 3480	to	3499			

Missing, Lost, or Stolen Canadian Money Order Forms

Do Not Cash — Upon Receipt, Notify Local Postal Inspectors

Provide this listing to all Postal Service™ employees responsible for accepting and cashing postal money orders. Destroy all interim notices when the numbers listed appear in the *Postal Bulletin*. The new money order serial

numbers consist of the first 9 digits. The tenth digit is a check digit only.

Do not cash outdated money orders **104 151 601 to 692 600 000**. Advise holders to send invalid money orders to Canada Post Corporation, Ottawa, Canada K1A 0B1. Check for altered dollar amounts by holding money orders to the light.

719 869 731	to	9 760	726 504 331	to	4 390	732 355 201	to	5 380	738 892 270	to	2 290
720 227 871	to	7 930	726 563 701	to	4 060	732 472 320	to	2 560	738 997 259	to	7 380
720 227 949	to	7 960	726 599 371	to	9 460	732 541 605	to	1 620	739 161 451	to	1 540
720 368 543	to	8 570	726 626 356	to	6 370	732 572 221	to	2 490	739 219 381	to	9 440
720 392 151	to	2 570	727 182 271	to	2 510	732 586 479	to	6 710	739 740 151	to	0 180
720 556 491	to	6 640	727 416 181	to	6 240	732 994 037	to	4 080	739 793 491	to	3 520
720 558 621	to	8 650	727 481 431	to	1 460	733 163 449	to	3 460	739 793 527	to	3 550
720 575 361	to	5 570	727 749 241	to	9 780	733 297 171	to	7 290	739 942 621	to	2 650
720 590 152	to	0 179	728 382 331	to	2 480	733 446 631	to	7 110	739 999 231	to	9 320
721 638 331	to	9 170	728 702 338	to	2 400	733 474 665	to	4 770	740 011 517	to	1 530
721 815 391	to	5 420	728 915 371	to	5 850	733 704 482	to	4 570	740 030 701	to	0 970
721 969 713	to	9 740	728 953 141	to	3 410	733 751 041	to	1 130	740 261 740	to	1 820
722 072 137	to	2 160	728 954 280	to	4 310	734 009 101	to	9 130	740 265 811	to	6 290
722 378 265	to	8 280	729 169 081	to	9 140	734 290 759	to	0 770	740 299 111	to	9 170
722 413 990	to	4 004	729 363 841	to	3 870	734 389 273	to	9 290	740 299 231	to	9 260
722 764 948	to	4 980	729 682 891	to	3 190	734 440 031	to	0 111	740 329 266	to	9 320
722 825 840	to	5 889	729 838 940	to	9 070	734 797 201	to	7 320	740 889 081	to	9 090
723 153 841	to	3 850	729 839 101	to	9 130	734 939 611	to	9 640	741 010 421	to	0 530
723 237 616	to	7 630	730 077 683	to	7 840	734 950 111	to	0 170	741 113 041	to	3 370
723 331 081	to	1 110	730 109 847	to	9 880	735 120 331	to	0 840	741 373 891	to	4 340
723 496 443	to	6 470	730 373 761	to	3 850	735 283 008	to	3 020	741 452 369	to	2 490
723 967 291	to	7 320	730 501 951	to	2 130	735 293 131	to	3 220	741 492 991	to	3 140
724 655 196	to	5 340	730 519 379	to	9 470	735 635 010	to	5 040	741 553 460	to	3 470
724 711 441	to	1 500	730 569 278	to	9 360	735 783 961	to	3 990	741 764 431	to	4 520
724 711 538	to	1 560	730 711 711	to	1 740	735 803 401	to	3 430	741 764 431	to	4 520
724 793 221	to	3 250	730 722 991	to	3 230	735 803 420	to	5 440	742 178 834	to	8 880
724 908 109	to	8 120	730 845 970	to	5 990	736 005 420	to	6 110	742 325 500	to	5 520
724 937 461	to	7 670	730 888 291	to	8 320	736 366 021	to	6 110	742 325 668	to	5 700
725 163 118	to	3 151	730 927 591	to	7 680	736 624 456	to	4 500	742 408 771	to	8 830
725 202 735	to	2 750	731 307 914	to	7 930	736 670 851	to	1 060	742 512 120	to	2 150
725 398 591	to	8 800	731 402 431	to	2 460	736 767 061	to	7 090	742 512 120	to	2 150
725 464 591	to	4 920	731 402 431	to	2 460	736 767 093	to	7 120	742 684 849	to	4 890
725 475 321	to	5 330	731 407 232	to	7 320	736 982 191	to	2 370	742 839 553	to	9 630
725 711 057	to	1 070	731 588 301	to	8 340	736 982 551	to	2 730	742 913 668	to	3 700
725 738 581	to	8 730	731 767 273	to	7 320	737 110 141	to	0 170	742 917 287	to	7 296
725 981 311	to	1 430	731 781 061	to	1 120	737 185 501	to	5 710	742 921 891	to	1 980
725 987 835	to	7 880	731 837 821	to	7 910	737 317 321	to	7 350	742 983 631	to	3 810
726 060 811	to	0 900	731 841 377	to	1 450	737 517 781	to	7 840	743 020 021	to	0 170
726 391 970	to	2 520	732 018 481	to	8 600	737 517 781	to	7 840	743 206 491	to	6 500
726 484 771	to	4 800	732 018 481	to	8 600	737 628 181	to	8 210	743 235 992	to	6 050
726 493 351	to	5 300	732 067 972	to	8 370	737 634 258	to	4 270	743 940 631	to	0 900
726 504 031	to	4 063	732 188 649	to	8 670	738 361 971	to	1 980	743 978 011	to	8 070
726 504 070	to	4 090	732 193 460	to	3 470	738 447 601	to	7 660	744 234 751	to	4 780
			732 201 241	to	1 390	738 648 355	to	8 450	744 499 591	to	9 680
			732 220 431	to	0 440	738 849 811	to	9 900			

744 626 901	to	6 910	755 957 701	to	8 000	763 900 479	to	0 530	773 179 320	to	9 410
745 388 794	to	8 910	755 962 981	to	3 280	763 917 271	to	7 750	773 202 989	to	3 140
746 446 806	to	6 820	756 035 371	to	5 490	764 125 801	to	5 860	773 208 991	to	9 290
746 818 351	to	8 410	756 301 257	to	1 290	764 284 525	to	4 560	773 231 311	to	1 340
747 245 266	to	5 280	756 371 565	to	1 580	764 526 241	to	6 330	773 348 739	to	8 940
747 364 813	to	4 830	756 876 031	to	6 120	764 601 421	to	1 600	773 348 739	to	8 940
747 501 434	to	1 450	756 876 151	to	6 240	764 650 231	to	0 470	773 575 891	to	5 950
747 739 891	to	0 070	756 970 129	to	0 140	764 984 371	to	4 850	773 852 971	to	3 030
748 148 649	to	8 760	757 059 613	to	9 630	765 003 667	to	3 680	775 373 449	to	3 460
748 259 960	to	9 970	757 078 540	to	8 560	765 042 517	to	2 540	789 257 191	to	7 250
748 565 162	to	5 280	757 086 209	to	6 240	765 194 728	to	4 970	790 448 020	to	8 460
748 874 988	to	5 030	757 240 591	to	0 650	765 387 365	to	7 450	790 597 485	to	7 530
749 137 381	to	7 410	757 277 371	to	7 700	765 541 801	to	2 100	790 911 883	to	1 900
749 190 192	to	0 210	757 291 591	to	2 730	765 638 461	to	8 970	791 057 441	to	7 550
749 685 421	to	5 450	757 964 251	to	4 280	765 647 101	to	7 190	791 239 081	to	9 290
749 846 791	to	6 850	758 067 001	to	7 090	765 813 781	to	4 029	791 374 483	to	4 500
749 993 131	to	3 580	758 105 221	to	5 250	765 879 314	to	9 390	791 387 971	to	8 030
750 071 587	to	1 610	758 324 941	to	5 000	765 954 001	to	4 030	791 447 521	to	7 850
750 408 167	to	8 183	758 593 628	to	3 650	766 120 286	to	0 320	791 451 151	to	1 240
750 438 421	to	8 501	758 709 038	to	9 060	766 125 716	to	5 750	791 500 009	to	0 470
750 743 911	to	4 030	758 744 101	to	4 160	766 158 824	to	8 840	791 771 431	to	1 490
750 779 118	to	9 400	758 850 883	to	0 900	766 388 433	to	8 460	792 004 293	to	4 320
750 910 981	to	1 010	758 860 951	to	1 550	766 509 421	to	9 660	792 018 379	to	8 420
750 960 841	to	0 900	759 152 851	to	2 880	766 572 901	to	3 020	792 070 621	to	0 740
751 296 211	to	6 240	759 740 941	to	1 090	766 748 500	to	8 521	792 145 211	to	5 230
751 539 121	to	9 180	760 004 596	to	4 610	767 024 341	to	4 370	792 391 381	to	1 620
751 541 311	to	1 790	760 118 191	to	8 250	767 326 471	to	6 590	792 452 779	to	2 790
751 757 641	to	7 700	760 155 001	to	5 090	767 332 561	to	2 950	792 772 728	to	2 770
751 936 951	to	7 010	760 378 002	to	8 020	768 009 841	to	9 960	792 903 511	to	3 990
751 951 861	to	1 890	760 692 722	to	2 749	768 011 489	to	1 520	793 282 518	to	2 533
751 999 021	to	9 110	761 055 460	to	5 480	768 177 980	to	7 990	794 041 831	to	2 040
752 139 516	to	9 570	761 169 781	to	9 810	768 391 081	to	1 170	794 397 709	to	7 780
752 182 892	to	2 950	761 504 941	to	5 120	768 661 569	to	1 650	794 581 741	to	2 040
752 206 861	to	7 100	761 516 836	to	6 910	769 000 051	to	0 080	794 592 122	to	2 150
752 295 241	to	5 600	761 613 588	to	3 600	769 050 841	to	0 900	795 032 251	to	2 340
752 731 351	to	1 410	761 688 631	to	8 690	769 159 081	to	9 178	795 796 291	to	6 350
752 767 441	to	7 470	761 805 199	to	5 240	769 737 496	to	7 510	796 070 139	to	0 160
753 008 941	to	9 030	761 826 106	to	6 120	769 778 491	to	8 730	796 143 151	to	3 630
753 194 311	to	4 370	761 881 171	to	1 560	769 827 331	to	7 450	796 159 725	to	9 740
753 620 378	to	0 400	761 975 641	to	5 670	770 216 071	to	6 100	796 169 306	to	9 340
754 013 917	to	3 940	761 975 886	to	5 895	770 723 281	to	3 400	796 373 406	to	3 430
754 161 061	to	1 120	762 304 144	to	4 170	770 790 451	to	0 480	796 602 961	to	3 050
754 358 445	to	8 610	762 324 931	to	4 960	770 915 150	to	5 490	796 708 441	to	8 500
754 410 451	to	0 660	762 439 261	to	9 290	771 455 551	to	5 610	796 886 281	to	6 430
754 438 393	to	8 410	762 524 158	to	4 220	771 609 661	to	9 690	796 901 701	to	2 000
754 493 109	to	3 130	762 584 872	to	4 970	771 932 551	to	2 580	796 975 466	to	5 590
754 664 182	to	4 220	762 593 431	to	3 460	772 057 224	to	7 440	797 272 917	to	2 950
754 816 377	to	6 470	763 155 160	to	5 180	772 162 660	to	3 070	797 519 441	to	9 460
755 487 421	to	7 600	763 178 631	to	8 660	772 718 615	to	8 640	797 519 731	to	0 240
755 592 901	to	3 140	763 506 001	to	6 060	772 940 140	to	0 160	797 535 181	to	5 330
755 790 020	to	0 030	763 522 141	to	2 470	772 970 886	to	0 940	797 646 151	to	6 180
755 791 730	to	1 800	763 717 694	to	7 800	773 009 419	to	9 430	798 040 053	to	0 080
755 926 951	to	7 070	763 826 461	to	6 520	773 112 031	to	2 060	798 055 813	to	5 830
755 934 332	to	4 510	763 900 460	to	0 471	773 125 387	to	5 410	798 055 891	to	5 950

798 326 371	to	6 520	809 189 001	to	9 010	816 945 571	to	5 600	824 588 281	to	8 370
798 339 167	to	9 210	809 886 879	to	6 930	817 253 011	to	3 280	825 140 397	to	0 460
798 562 411	to	2 440	809 890 489	to	0 500	817 763 881	to	4 060	825 409 651	to	9 680
798 632 461	to	2 490	810 323 734	to	3 760	818 330 562	to	0 610	825 472 171	to	2 200
798 807 151	to	7 510	810 367 116	to	7 140	818 459 641	to	9 670	826 042 898	to	2 920
798 944 761	to	5 030	810 526 351	to	6 500	818 926 273	to	6 320	826 226 644	to	6 670
799 118 616	to	8 640	810 806 911	to	6 940	818 950 351	to	0 380	826 582 951	to	3 430
799 133 191	to	3 220	810 807 211	to	7 240	818 962 492	to	2 530	826 720 201	to	0 230
799 177 626	to	7 650	811 423 021	to	3 110	819 032 341	to	2 730	827 005 671	to	5 830
799 854 751	to	5 200	811 517 221	to	7 239	819 127 054	to	7 080	827 287 861	to	7 950
800 044 320	to	4 410	811 721 101	to	1 130	819 278 540	to	8 670	827 291 502	to	1 520
800 211 901	to	2 440	812 025 721	to	5 900	819 544 681	to	4 740	827 575 381	to	5 470
800 427 530	to	7 540	812 093 073	to	3 130	819 928 441	to	8 650	827 609 085	to	9 100
800 872 741	to	2 830	812 100 821	to	0 840	820 034 406	to	4 430	827 619 811	to	9 840
801 349 801	to	9 830	812 465 251	to	5 610	820 070 761	to	1 540	827 883 511	to	3 600
801 676 681	to	7 100	812 918 341	to	8 670	820 191 342	to	1 360	828 160 441	to	0 530
802 967 821	to	7 940	812 918 701	to	8 760	820 274 856	to	4 880	828 376 201	to	6 260
803 217 601	to	7 780	813 050 491	to	0 520	820 600 171	to	0 230	828 441 602	to	1 630
803 729 731	to	9 850	813 073 171	to	3 200	821 172 241	to	2 360	828 539 316	to	9 340
803 747 402	to	7 520	813 398 476	to	8 550	821 229 661	to	9 720	828 539 341	to	9 370
804 138 181	to	8 420	813 713 971	to	4 000	821 229 743	to	9 780	828 732 331	to	2 390
804 428 224	to	8 250	813 858 121	to	8 150	821 903 731	to	3 910	828 807 781	to	7 840
804 682 411	to	2 710	814 789 330	to	9 349	821 927 841	to	7 850	828 830 952	to	0 963
805 272 525	to	2 540	814 984 656	to	4 680	822 505 801	to	5 830	828 939 781	to	0 050
805 523 445	to	3 460	815 016 020	to	6 030	822 703 442	to	3 470	829 002 721	to	2 870
805 745 704	to	5 730	815 199 410	to	9 420	822 900 991	to	1 020	829 005 301	to	5 540
806 452 907	to	2 980	815 240 491	to	0 520	822 925 951	to	6 100	829 080 241	to	0 330
806 744 781	to	4 850	815 755 591	to	5 620	823 284 931	to	4 990	829 160 986	to	1 000
806 982 181	to	2 300	815 755 622	to	5 650	823 293 031	to	3 210	829 176 841	to	6 930
807 764 791	to	4 910	815 806 381	to	6 680	823 556 011	to	6 100	829 471 561	to	1 590
808 089 931	to	9 960	816 126 834	to	6 870	824 078 341	to	8 370	829 561 065	to	1 080
808 656 423	to	6 450	816 156 721	to	6 780	824 156 325	to	6 340	829 566 481	to	6 510
808 753 771	to	3 800	816 580 903	to	0 920	824 511 252	to	1 270	829 569 931	to	9 960

Verifying U.S. Postal Service Money Orders

Follow these steps to cash a Postal Service™ money order:

1. Check that the amount does not exceed the legal limit: \$1,000 for domestic, and \$700 for international Postal Service money orders.
2. Check that the proper security features are present:
 - When held to the light, a watermark of Benjamin Franklin is repeated from top to bottom on the left side.
 - When held to the light, a dark line (security thread) runs from top to bottom with the word “USPS” repeated.
 - When there is discoloration around the dollar amounts, this might indicate the amounts were changed.

These appear in Postal Service Notice 299, *U.S. Postal Money Order Reference Card*, or online at usps.com/shop/money-orders.htm.

3. If the money order seems suspicious, call the U.S. Postal Service Money Order Verification System at 866-459-7822.

Provide this information to local banks and retailers, as they also receive Postal Service money orders for cashing.

— *Retail and Customer Service Operations, 4-26-18*

Counterfeit Canadian Money Order Forms

Do Not Cash

To be posted and used by retail window employees. As directed, destroy previous notices. Destroy all interim notices when the numbers listed appear in the *Postal Bulletin*.

671,819,086	683,594,542	687,262,503
676,612,640	684,683,610	687,262,525
677,891,039	686,619,878	687,262,526
678,282,493	686,619,886	687,287,578
678,916,031	686,619,887	687,287,581
679,552,215	686,794,382	687,287,582
679,694,334	686,794,426	694,063,898
679,751,983	686,794,427	694,063,899
679,800,207	686,794,431	694,063,980
681,130,536	687,262,502	701,321,725
681,844,376		

— *Criminal Investigations Group,
Postal Inspection Service, 4-26-18*

Toll-Free Number Available to Verify Canadian Money Orders

The Canada Post Corporation has a toll-free number that cashing agents can call to verify the validity of Canadian Postal Money Orders. The number is 800-563-0444.

This toll-free number is printed on the back of the Canadian Postal Money Orders.

— *Criminal Investigations Group,
Postal Inspection Service, 4-26-18*

Other Information

Overseas Military/Diplomatic Mail

Mail addressed to military and diplomatic post offices overseas is subject to certain conditions or restrictions of mailing regarding content, preparation, and handling. The APO/FPO/DPO table outlines these conditions by APO/FPO/DPO ZIP Codes™ through the use of footnoted mailing restrictions codes (see the [Restrictions](#) page following the table).

Acceptance clerks must use the table with the RSS terminal to determine which APO/FPO/DPO ZIP Codes are active and which conditions of mailing apply. Send inquiries to the Military Postal Service Agency at amps.usps.gov/jy2/frm.htm.

We have eliminated “Not Active” entries from the table below to save space and paper.

APO/FPO/DPO Table

APO/ FPO/ DPO	See Restrictions	APO/ FPO/ DPO	See Restrictions	APO/ FPO/ DPO	See Restrictions	APO/ FPO/ DPO	See Restrictions
09002	A-B-F-H-N-Q-S-V-Z-Z1	09079	B-C-D-E-F3-H-M-R-S-U	09204	B-C-F3-M-N-R-S-V-Z1	09314	A-B-C1-E2-F-F1-F3-H-H1-M-N-R-R1-S-V-Z1
09003	B-C-D-E-F3-H-M-P-R-S-U	09090	B-C-D-E-F3-H-M-R-S-U	09211	B-C-D-E-F3-H-M-P-R-S-U	09315	A-B-C1-E2-F-F3-N-R-R1-V-Z1
09004	B-C-D-E-F3-H-M-R-S-U	09094	B-C-D-F3-H-M-P-R-S-Z1	09213	B-C2-F-F1-F3-H-J-L-M-N-R-R1-T-U-V-Z1	09316	A-B-C1-E2-F-F1-F3-H1-I3-M-N-R-R1-T-V-Z-Z1
09005	B-C-D-E-F3-H-M-P-R-S-U	09095	B-C-D-E-H-M-R-U	09214	B-C-D-E-F3-H-M-R-S-U-Z1	09317	A-B-C1-E2-F-F1-F3-H-H1-I3-M-N-R-R1-T-V-X-Z-Z1
09006	B-C-D-E-F3-H-M-R-S-U	09096	B-C-D-E-F3-H-M-R-S-U	09227	B-C-D-E-F3-H-M-R-S-U	09319	A-B-C-C1-E2-F-F1-F2-H1-R-R1-U2-V-Z1
09008	A-B-F-H-N-Q-S-V-Z-Z1	09104	B-C-D-F3-H-M-R-S-U-Z1	09250	B-C-D-E-F3-H-M-R-S-U	09320	A-B-C1-E2-F-F3-H1-M-N-R-R1-V-Z1
09009	B-C-D-E-F3-H-M-R-S-U-Z1	09107	B-C-D-E-F3-H-M-R-S-U	09261	B-C-D-E-F3-H-M-R-S-U-V-Z1	09321	A-B-C1-E2-F-H1-M-N-R-R1-V-Z1
09011	B-C-D-E-F3-H-M-R-S-U	09112	B-C-D-E-F3-H-M-R-S-U	09263	B-C-D-E-F3-H-M-R-S-U	09322	A-B-C1-E2-F-F1-F3-H1-M-R-R1-V-Z1
09012	B-C-D-E-F3-H-M-R-S-U-Z1	09114	B-C-D-E-F3-H-M-R-S-U	09264	B-C-D-E-F3-H-M-R-S-U	09330	A-B-C1-E2-F-F1-F3-H1-M-R-R1-V-Z1
09013	B-C-D-E-F-F1-H-M-R-U-Z1	09123	B-C-D-E-F3-H-M-R-S-U-Z1	09265	B-C-D-F-F1-H-J-L-M-N-R-T-U-V-Z1	09333	A-B-C1-E2-F-F1-F3-H1-I3-M-N-R-R1-V-Z-Z1
09014	B-C-D-E-F3-H-M-P-R-S-U	09125	A-B-C-F-F1-F3-H-N-O-R-R1-S-V-V1	09301	A-B-C1-C2-E2-F-F1-F3-H1-I3-L-M-N-R-R1-S-T-U4-V-Z-Z1	09337	A-B-C1-E2-F-F1-F3-H1-M-R-R1-V-Z1
09016	B-C-D-E-F1-H-M-R-S-U	09126	B-C-D-F3-H-M-P-R-S-Z1	09302	A-B-C1-F-F1-H-M-N-V-Z-Z1	09340	A-B-C1-F-H-N-R-V
09017	A-B-F-H-N-Q-S-V-Z-Z1	09128	B-C-D-E-F3-H-M-R-S-U	09304	A-B-C-C1-D-E2-F-F1-F3-H1-J-L-M-N-R-R1-T-V-Z1	09343	A-B-C1-F-M-N-V-Z1
09018	A-B-F-H-N-Q-V-Z-Z1	09131	B-C-D-E-F3-H-M-R-S-U	09305	A-B-C1-E2-F-F1-H1-I3-M-N-R-R1-T-V-Z-Z1	09347	A-B-C1-E2-F-H1-M-R-R1-V-Z1
09020	B-C-D-E-F3-H-M-R-S-U	09136	B-C-D-E-F1-F3-H-M-P-R-S-U	09306	A-B-C1-E2-F-F1-F3-H1-R-R1-U2-V-Z1	09348	A-B-C1-E2-F-F1-F3-H1-I3-M-N-R-R1-T-V-Z-Z1
09021	B-C-D-E-F3-H-M-R-S-U-Z1	09138	B-C-D-F3-H-M-R-S-U	09307	B-N-V-Z1	09351	A-B-C1-E2-E3-F-F1-F3-H-H1-I3-M-N-R-R1-S-T-V-X-Z-Z1
09028	B-C-D-E-F1-H-M-R-S-U	09140	B-C-D-E-F3-H-M-R-S-U	09308	A-B-C1-E2-F-F1-F3-H1-I3-M-N-R-R1-T-V-Z-Z1	09352	A-B-C1-E2-F-F3-H1-M-R-R1-V-Z1
09034	B-C-D-E-F3-H-M-R-S-U	09142	B-C-D-E-F3-H-M-R-S-U	09309	A-B-C-C1-C2-E2-F-H1-M-N-R-V-Z1	09354	A-B-C1-E2-F-F3-H1-M-R-R1-V-Z1
09044	B-C-D-F1-H-U	09154	B-C-D-E-F3-H-M-R-S-U	09310	A-B-C1-C2-E2-F-F1-F3-H1-I3-L-M-N-R-R1-S-T-U4-V-Z-Z1	09355	A-B-C1-E2-F-F3-H1-M-R-R1-V-Z1
09046	B-C-D-E-F3-H-M-R-S-U	09160	B-C-C2-D-F-F1-F3-H-J-L-M-N-R-R1-T-U-V-Z1	09311	A-B-C1-C2-E2-F-F1-F3-H1-I3-L-M-N-R-R1-S-T-U4-V-Z-Z1	09356	A-B-C1-E2-F-F3-H1-M-N-R-V-Z1
09049	B-C-D-E-F3-H-M-R-S-U	09172	B-C-D-E-F3-H-M-R-S-U	09312	A-B-C1-C2-E2-F-F1-F3-H1-I3-L-M-N-R-R1-S-T-U4-V-Z-Z1	09357	A-B-C1-E2-F-F3-H1-M-R-V-Z1
09053	B-C-D-E-F3-H-M-R-S-U	09173	B-C-D-E-F3-H-M-R-S-U	09313	A-B-C-C1-E2-F-F1-F2-H1-R-R1-V-Z1	09363	A-B-C1-E2-F-F3-H1-M-R-V-Z1
09054	B-C-D-E-F3-H-M-R-S-U	09177	B-C-D-E-F3-H-M-R-S-U				
09060	B-C-D-E-F1-F3-H-M-R-S-U-Z1	09180	B-C-D-F3-H-M-R-S-U				
09067	B-C-D-E-F3-H-M-R-S-U	09186	B-C-D-E-F3-H-M-P-R-S-U				
09068	B-C-D-E-H-U-Z1	09203	A-B-C-C1-C2-F-F1-F3-I3-J-L-M-N-R-R1-T-V-X-Z-Z1				
09069	A-B-C-D-E-H-N-U-V						

APO/ FPO/ DPO	See Restrictions	APO/ FPO/ DPO	See Restrictions	APO/ FPO/ DPO	See Restrictions	APO/ FPO/ DPO	See Restrictions
09365	A-B-C-C1-E2-F-F3-H1-M-N-R-V-Z1	09541	B-V	09603	B-C-F-F1-F3-R-S-U-V-Z1	09708	B-C-C1-F1-M-R-R1-U
09366	A-B-C1-E2-F-F1-F3-H1-M-R-R1-V-Z1	09542	B-V	09604	B-C-F-F1-F3-P-R-S-U-V-Z1	09709	B-B2-C1-C2-E2-F-F1-F3-H-H1-J-L-N-R-R1-T-V-Z1
09378	A-B-C1-E2-F-F1-F3-H1-I3-M-N-R-R1-T-V-Z1	09544	B-V	09605	B-C-D-H-M-R-U-V	09710	B-C-C1-F-F1-J-L-M-N-R-R1-T-U-V-Z1
09381	A-B-C1-E2-F-F1-F3-H1-I3-M-N-R-R1-T-V-Z1	09550	B-F-F1-R-R1-V	09606	B-C-D-H-M-R-U-V	09711	A-B-F-F1-F3-N-R-R1-S-V-Z1
09403	B-C-C1-F3-M-R-S-U-Z1	09554	B-F-F1-R-R1-V	09607	A-B-C-F-F1-F3-M-N-R-R1-U-U3-V-W-Z1	09712	A-B-F-F3-H-R-U-V-Z1
09421	B-C-C1-F3-M-R-S-U-Z1	09556	B-F-F1-R-R1-V	09608	B-C-F-F3-N-R-U-V-Z1	09714	B-C-C1-F1-M-R-R1-U
09447	B-C-C1-F3-M-R-S-U-V-Z1	09564	B-F-F1-R-R1-V	09609	B-C-F-F3-R-U-Z1	09715	B-F-F1-J-L-M-N-R-T-V-Z1
09454	B-C-C1-F3-M-R-S-U-V-Z1	09565	B-F-F1-R-R1-V	09610	B-C-F-F1-F3-M-R-S-U-V-Z1	09716	B-C-C2-F-F1-F3-J-L-M-N-R-R1-T-V-Z1
09459	B-C-C1-F3-M-R-S-U-Z1	09566	B-C2-E2-E3-F-F1-F3-R-R1-V-Z1	09613	B-C-F-N-U-V	09717	A-B-F3-M-R-S-V-W-Z1
09461	B-C-C1-F3-M-P-R-S-U-Z1	09567	B-C2-E2-E3-F-F1-F3-R-R1-V-Z1	09614	A-B-C1-C2-E2-F-F1-F3-H1-J-L-M-N-R-R1-T-V-W-Z1	09718	B-F-F1-J-L-M-N-R-T-U-V-Z1
09463	B-C-C1-F3-M-R-S-U-Z1	09568	B-V	09617	B-C-F-F3-R-U-Z1	09719	B-C-D-F3-M-R-S-U-V-Z1
09464	B-C-C1-F3-R-S-U-Z1	09569	B-C2-E2-E3-F-F1-F3-R-R1-V-Z1	09618	B-C-F-F3-R-U-Z1	09720	B-M-R-S-U-V-Z1
09468	B-C-C1-F3-M-R-S-U-Z1	09570	B-F-F1-R-R1-V	09620	B-C-F-R-U-Z1	09722	A-B-F-H-N-Q-V-Z1
09469	B-C-C1-R-U-Z1	09573	B-C2-E2-E3-F-F1-F3-R-R1-V-Z1	09621	B-C-F-F3-R-U-Z1	09723	B-C2-F-F1-F3-J-L-M-N-R-R1-T-V-Z1
09470	B-C-C1-M-R-U-Z1	09574	B-F-F1-R-R1-V	09622	B-C-F-F3-R-U-Z1	09724	B-C-C1-F1-M-R-R1-U
09494	B-C-C1-F3-M-R-S-U-Z1	09575	B-F-F1-R-R1-V	09623	B-C-F-F3-R-U-V-Z1	09725	A-B-F-F3-H-N-O-Q-S-V-V1-Z-Z1
09497	A-B-C1-E2-F3-H1-M-N-R-R1-V-Z1	09576	B-F-F1-R-R1-V	09624	B-C-C2-F-F1-F3-I3-J-L-N-R-R1-T-U-V-Z1	09726	B-F-F1-J-L-M-N-R-T-U-V-Z1
09498	B-C1-C2-F-F1-F3-J-L-N-R-R1-T-V-Z1	09577	B-V	09625	B-C-F-F3-N-R-U-Z1	09727	A-B-C1-C2-F-F1-F3-J-L-M-N-R-R1-T-V-Z1
09501	B-V	09578	B-C2-E2-E3-F-F1-F3-R-R1-V-Z1	09626	B-C-F-F3-R-U-Z1	09728	A-B-C-C1-C2-F-F1-F3-J-L-N-R-R1-T-V-Z1
09502	B-V	09579	B-F-F1-R-R1-V	09627	B-C-F-F3-R-U-V-Z1	09729	B-C-F-F3-N-R-R1-U-V-Z1
09503	B-F-F1-R-R1-V	09581	B-F-F1-R-R1-V	09630	B-C-F-U-V	09730	A-B-C1-C2-F-F1-F3-J-L-M-N-R-R1-T-V-Z1
09504	B-V	09582	B-E2-E3-F-F1-F3-R-R1-V-Z1	09631	B-C-F-F3-R-U-V-Z1	09731	A-B-C1-C2-F-F1-F3-J-L-M-N-R-R1-T-V-Z1
09505	B-V	09583	B-F-F1-R-R1-V	09633	B-B2-C-D-F-F1-M-R-U-U1-U2-U3-V-Z1	09732	B-N-V-Z1
09506	B-V	09586	B-F-F1-R-R1-V	09636	B-C-F-F3-R-U-V-Z1	09733	B-I3-L-N-V
09507	B-V	09587	B-C2-E2-E3-F-F1-F3-R-R1-V-Z1	09642	B-C2-F-F1-F3-J-L-M-N-R-T-U-V	09734	A-B-C-C1-C2-F-F1-F3-I3-J-L-M-N-R-R1-T-V-Z1
09508	B-F-F1-R-R1-V	09588	B-C2-E2-E3-F-F1-F3-R-R1-V-Z1	09643	B-C-F3-M-R-S-U-V-Z1	09735	B-N-V-Z1
09509	B-F-F1-R-R1-V	09589	B-F-F1-F3-R-S-V	09645	B-C-F-F1-F3-R-U-Z1	09736	A-B-C1-F-F1-F3-J-L-M-N-R-R1-T-V-Z1
09510	A-B-C1-E2-F-H1-M-R-R1-V-Z1	09590	B-V	09647	B-F3-M-N-R-U-Z1	09737	A-B-C1-C2-F-F1-F3-I3-J-L-M-N-R-R1-T-V-W-Y-Z1
09511	B-F-F1-R-R1-V	09591	B-C2-E2-E3-F-F1-F3-R-R1-V-Z1	09648	B-F3-N-R-U-V-Z1	09738	A-B-C1-C2-F-F1-F3-J-L-M-N-R-R1-T-V-Z1
09513	B-F-F1-R-R1-V	09592	B-F-F1-R-R1-V	09649	B-F3-N-R-U-Z1	09739	A-B-C1-C2-F-F1-F3-J-L-M-N-R-R1-T-V-Z1
09517	B-F-F1-R-R1-V	09593	B-F-F1-F3-R-S-V	09701	A-B-B2-C1-C2-F-F1-F3-J-L-M-N-R-R1-T-V-Z1	09741	A-B-C1-C2-E2-F-F1-F3-H1-J-L-M-N-R-R1-T-V-W-Y-Z1
09520	B-F-F1-R-R1-V	09594	B-F-F1-R-R1-V	09702	B-C-C1-F1-M-R-R1-U		
09522	B-F-F1-F3-R-S-V	09595	B-F-F1-R-R1-V	09703	B-C-D-F1-H-U		
09523	B-F-F1-R-R1-V	09596	B-F-F1-R-R1-V	09704	B-C-O-V-V1		
09524	B-F-F1-R-R1-V	09599	B-F-F1-R-R1-V	09705	B-C-C1-F1-M-R-R1-U		
09532	B-F-F1-R-R1-V	09600	B-C-C2-F-F1-F3-R-U-Z1	09706	B-C-F3-M-N-R-S-U-V-Z1		
09533	B-V	09602	B-C-F-F1-N-R-U-V	09707	B-C2-F-F1-F3-J-L-M-N-R-R1-T-V-Z1		

APO/ FPO/ DPO	See Restrictions	APO/ FPO/ DPO	See Restrictions	APO/ FPO/ DPO	See Restrictions	APO/ FPO/ DPO	See Restrictions
09742	A-B-C2-F-F1-F3-J-L-M-N-R-R1-T-V-Z1	09809	B-C1-C2-F-F1-F3-J-L-N-T-V-Z1	09844	A-B-C1-C2-F-F1-F3-J-L-M-N-R-R1-T-V-Z1	09880	A-B-C1-E2-F-F1-H1-N-R-R1-U-V-Z1
09743	A-B-F-H-N-Q-V-Z1	09810	A-B-F-F1-F3-N-R-S-V-Z1	09845	A-B-C1-C2-E3-F-F1-F3-J-L-M-N-R-R1-T-V-Z1	09890	B-E2-F-H1-N-R-R1-U2-V-Z1
09744	A-B-C1-C2-F-F1-F3-J-L-M-N-R-R1-T-V-Z1	09811	B-E2-E3-F-F1-F3-H1-N-R-R1-U-V-Z1	09846	A-B-C1-C2-F-F1-F3-J-L-N-R-R1-T-V-Z1	09892	A-B-C1-C2-E2-F-F1-F3-J-L-M-N-R-R1-T-V-Z1
09745	A-B-F-F1-F3-M-N-R-R1-S-V-Z1	09812	B-E2-E3-F-F1-I-J-L-N-R-T-U-V-Z1	09847	B-C2-F-F1-F3-J-L-M-N-R-R1-S-T-V-Z1	09895	A-B-C1-C2-E2-F-F1-F3-J-L-M-N-R-T-V-W-Z1
09748	A-B-C1-C2-F-F1-F3-J-L-M-N-R-R1-T-V-Z1	09813	A-B-C1-C2-E2-E3-F-F1-F3-J-L-N-R-R1-T-V-Z1	09848	A-B-F-M-R-V-Z1	09898	B-C-C1-E2-F-F1-F3-H1-N-R-R1-U2-V-Z1
09749	A-B-F-H-N-U-V-Z1	09814	B-C2-E2-E3-F-F1-F3-I3-J-L-N-R-R1-T-V-Z1	09851	A-B-C-F-F3-N-R-S-V-Z1	34001	A-B-C1-C2-F-F1-F3-J-L-M-N-R-R1-S-T-V-Z1
09750	A-B-C1-C2-F-F1-F3-J-L-M-N-R-R1-T-V-Z1	09815	A-B-F-F3-N-R-S-V-Z1	09852	B-E2-E3-F-F1-F3-H1-N-R-R1-U-V-Z1	34002	B-C1-C2-F-F1-F3-J-L-M-N-R-R1-T-V-Z1
09751	B-C-D-E-F3-H-M-R-S-U	09816	A-B-C1-C2-E2-E3-F-F1-F3-J-L-N-R-R1-T-V-Z1	09853	B-E2-F-H1-R-R1-U2-V-Z1	34004	B-C1-C2-F-F1-F3-J-L-M-N-R-R1-T-V-Z1
09752	B-C-D-F1-H-U	09817	A-B-C1-C2-E2-E3-F-F1-F3-H-H1-J-L-M-N-R-R1-T-V-Z1	09854	A-B-C1-C2-F-F1-F3-J-L-N-R-R1-S-T-V-Z1	34007	B-F-F1-H-J-M-N-R-R1-V-Z1
09753	A-B-F-N-V-Z1	09818	A-B-C-F-F3-M-S-V-Z1	09855	A-B-C1-E2-F-F1-H1-M-R-R1-U2-V-Z1	34008	B-B2-C1-C2-D-E1-F-F1-H-H1-J-L-M-N-R-R1-T-V-Z1
09754	A-B-F-H-L-N-Q-S-V-Z1	09820	A-B-C2-F-F1-F3-H-H1-J-L-M-N-R-R1-T-V-Z1	09856	B-C-C1-C2-E3-F-F1-F3-H-H1-I3-L-M-N-S-T-V-Z1	34011	B-C1-C2-E2-F-F1-F3-J-L-M-N-R-R1-T-V-Z1
09755	A-B-B2-C-C1-D-F-F1-J-L-M-N-Q-R-R1-T-V-Z1	09821	A-B-C-F-F3-N-R-S-V-Z1	09857	A-B-C2-E2-F-F1-F3-13-L-M-N-R-R1-S-T-V-Z1	34020	B-C1-C2-F-F1-F3-J-L-M-N-R-R1-T-V-Z1
09756	A-B-B2-E3-F-F1-J-L-N-Q-R-R1-T-V-Z1	09822	A-B-C-F-F3-M-R-S-V-Z1	09858	B-C1-E2-E3-F-F1-F3-H1-N-R-R1-U-V-Z1	34021	B-C1-C2-F-F1-F3-J-L-M-N-R-R1-T-V-Z1
09758	A-B-F-F1-M-N-R-R1-V-Z1	09823	A-B-C1-C2-F-F1-F3-J-L-M-N-R-R1-T-V-Z1	09859	B-C1-E2-E3-F-F1-F3-H1-R-R1-S-U-Z1	34022	B-C1-C2-F-F1-F3-J-L-M-N-R-R1-T-V-Z1
09759	A-B-C-C1-C2-E2-F-F1-F3-J-L-N-R-R1-T-V-Z1	09824	A-B-C-F-F3-M-R-S-V-Z1	09860	A-B-C2-F-F1-F3-I3-L-M-N-R-R1-S-T-V-Z1	34023	B-C1-C2-F-F1-F3-J-L-M-N-R-R1-T-V-Z1
09760	A-B-B2-C-C1-D-F-F1-J-L-M-N-Q-R-R1-S-T-V-Z1	09825	A-B-C1-C2-F-F1-F3-J-L-M-N-R-R1-T-V-Z1	09861	A-B-F-F1-F3-N-R-R1-S-V-Z1	34024	B-C1-C2-F-F1-F3-J-L-M-N-R-R1-T-V-Z1
09761	B-F-F1-F3-M-N-R-R1-V-Z1	09826	A-B-C1-C2-E1-E2-E3-F-F1-F3-J-L-M-N-R-R1-T-V-W-Z1	09862	A-B-C-C2-F-F1-F3-I3-L-M-N-R-R1-S-T-V-Z1	34025	B-F-F1-F3-J-L-M-N-R-R1-T-V-Z1
09762	A-B-C2-E3-F-F1-F3-J-L-N-R-R1-T-V-Z1	09827	A-B-F-F1-J-L-M-N-R-T-V-Z1	09863	A-B-F-F1-F3-N-O-R-R1-S-V-Z1	34030	B-C1-C2-F-F1-F3-J-L-M-N-R-R1-T-V-Z1
09769	A-B-B2-C1-C2-F-F1-F3-J-L-M-N-R-R1-T-V-Z1	09828	A-B-C1-C2-F-F1-F3-I3-J-L-N-R-R1-T-V-Z1	09864	A-B-C-C1-C2-E2-E3-F-F1-F3-I3-L-M-N-R-R1-S-T-V-W-Z1	34031	B-C1-C2-F-F1-F3-J-L-M-N-R-R1-T-V-Z1
09777	A-B-C-C1-C2-E1-F-F1-F3-J-L-M-N-R-R1-T-V-Z1	09829	B-C-N-R-V-Z1	09865	A-B-F3-R-U-V-Z1	34032	B-C1-C2-F-F1-F3-J-L-M-N-R-R1-T-V-Z1
09780	A-B-F-H-N-R-V	09830	B-C-F-F1-F3-J-L-M-N-R-R1-S-T-V-Z1	09867	A-B-C-C1-C2-E2-E3-F-F1-F3-I3-L-M-N-R-R1-S-T-V-W-Z1	34033	B-C1-C2-F-F1-F3-J-L-M-N-R-R1-T-V-Z1
09789	A-B-C2-F-F3-N-R-S-V-Z1	09831	B-C1-C2-F-F1-F3-J-L-N-R-R1-T-V-Z1	09868	A-B-E1-E2-E3-F1-F3-M-N-R-S-U-V-Z1	34034	B-C1-C2-F-F1-F3-I3-J-L-M-N-R-R1-T-V-Z1
09800	A-B-E2-F-F1-F3-N-R-R1-S-V-Z1	09832	B-C1-E2-F1-F3-S-V-Z1	09869	A-B-C1-C2-E2-E3-F1-F3-I3-L-M-N-R-R1-S-T-V-W-Z1	34035	B-C1-C2-F-F1-F3-H-J-L-M-N-R-R1-T-V-Z1
09801	A-B-C1-E2-F-H1-M-N-R-R1-V-Z1	09833	B-C1-E2-F1-F3-S-V-Z1	09870	A-B-C1-C2-E2-F-F1-F3-H1-I3-L-M-N-R-R1-S-T-U4-V-Z1	34036	B-C1-C2-F-F1-F3-J-L-M-N-R-R1-T-V-Z1
09802	A-B-C-C2-D-E3-F-F1-F3-H-H1-I3-L-M-N-R-R1-S-T-V-W-X-Z1	09834	B-E2-E3-F-F1-F3-R-R1-U-Z1	09873	A-B-C1-C2-E2-F-F1-F3-H1-I3-L-M-N-R-R1-S-T-U4-V-Z1	34037	B-C-C1-C2-F-F1-F3-H-J-L-M-N-R-R1-T-V-Z1
09803	B-E2-E3-F-F1-F3-H1-N-R-R1-U-V-Z1	09835	A-B-C1-F1-F3-N-V-Z1	09874	A-B-C1-C2-E2-F-F1-F3-H1-I3-L-M-N-R-R1-S-T-U4-V-Z1	34038	B-L-M-N-U-V-Z1
09804	A-B-F-F1-F3-M-N-R-S-V-Z1	09836	A-B-C1-C2-F-F1-F3-J-L-M-N-R-R1-V-Z1	09875	A-B-C1-C2-E2-F-F1-F3-H1-I3-L-M-N-R-R1-S-T-U4-V-Z1	34039	B-C1-C2-F-F1-J-L-M-N-T-V-Z1
09805	B-E2-E3-F-F1-F3-R-R1-Z1	09837	B-E2-E3-F1-F3-V-Z1			34041	B-C1-C2-F-F1-F3-J-L-M-N-R-R1-T-V-Z1
09806	A-B-C1-C2-E2-F-F1-F3-H1-J-L-M-N-R-R1-T-V-Z1	09838	B-E2-E3-F-F1-F3-U-Z1			34042	A-B-C-F-F1-M-N-R-U-V-W-Z1
09808	A-B-C1-C2-E2-F-F1-F3-H-H1-J-L-N-R-R1-T-V-Z1	09839	A-B-E1-E2-E3-F1-F3-M-R-S-U-V-Z1			34044	A-B-D-F-M-N-O-R-R1-V-V1-Z1
		09841	A-B-F3-N-R-U-Z1				
		09842	A-B-C1-C2-F-F1-F3-J-L-N-R-R1-T-V-Z1				

APO/ FPO/ DPO	See Restrictions	APO/ FPO/ DPO	See Restrictions	APO/ FPO/ DPO	See Restrictions	APO/ FPO/ DPO	See Restrictions
34050	B-V	96257	A-B-F-F1-F3-S-U	96368	B-C-M-R-W	96543	B-P-V-Z1
34051	B-V	96258	A-B-F-F1-F3-S-U	96370	B-F-F1-F2-H-M-W-Z1	96546	B-F-N-R-U3
34052	B-V	96260	A-B-F-F1-F3-S-U	96372	B-M-W	96548	A-B-H-M-R-U
34053	B-V	96262	A-B-F-F1-F3-R-S-U-V-Z1	96373	B-M-W	96549	A-B-C1-C2-F-F1-H-J-L-M-N-R-R1-S-T-V-Z1
34054	B-V	96264	A-B-C-F1-R-U	96374	B-M-W	96550	A-B-H-M-N-U-V-Z1
34055	B-C1-C2-F-F1-F3-J-L-M-N-R-R1-T-V-Z1	96266	A-B-C-F1-R-U	96375	B-M-W	96551	A-B-C1-C2-F-F1-H-J-L-M-N-R-R1-S-T-V-Z1
34058	B-F-F1-R-R1-V-Z1	96267	A-B-C-F1-R-U-V	96376	B-M-W	96552	B-Z1
34060	B-C1-C2-E2-F-F1-F3-J-L-M-N-R-R1-T-V-Z1	96269	A-B-F1-U-Z1	96377	B-M-W	96553	A-B-F-F1-H-M-N-R-U
34078	B-F1-N-V	96271	A-B-F-F1-F3-S-U	96378	B-M-W	96554	A-B-C1-C2-F-F1-H-J-L-M-N-R-R1-S-T-V-Z1
34080	B-F-F1-R-R1-V	96273	A-B-F-F1-F3-S-U	96379	B-M-W	96555	B-F-M-V
34081	B-F-F1-R-R1-V	96275	A-B-E-F1-F3-S-U	96380	B-M-W	96557	B-F-M-V
34082	B-F-F1-R-R1-V	96276	A-B-C-F1-R	96382	B-M-W	96562	A-B-C1-C2-D-E2-E3-F-F1-H-H1-I3-L-M-N-R-R1-S-T-V-Z1
34083	B-F-F1-R-R1-V	96278	A-B-C-F1-R-U	96384	B-M-W	96577	A-B-F-H-M-N-R-U
34084	B-F-F1-R-R1-V	96283	A-B-F-F1-F3-S-U	96385	B-M-W	96578	B-B2-F1-H-J-N-R
34085	B-F-F1-R-R1-V	96284	A-B-F-F1-F3-S-U	96386	B-M-W	96595	B-F-S-V-Z1
34086	B-F-F1-R-R1-V	96287	A-B-F-F1-F3-S-U	96387	B-M-W	96598	B-N-O-V-V1
34087	B-F-F1-R-R1-V	96297	A-B-F-F1-F3-S-U	96388	B-M-W	96601	B-V
34088	B-F-F1-R-R1-V	96301	A-B-F3-M-R-S-W	96389	B-M-W	96602	B-V
34089	B-F-F1-R-R1-V	96303	B-C1-C2-F-F1-H-J-L-M-N-T-V-W-Z1	96401	B-C-F-N-O-R-V-V1-Z1	96603	B-V
34090	B-F-F1-R-R1-V	96306	B-F-F1-F2-H-M-W-Z1	96501	A-B-N-V	96604	B-V
34091	B-E2-E3-F-F1-F3-R-R1-V-Z1	96309	B-C-M-R-V-W	96504	A-B-C-C1-C2-F-F1-F3-I3-L-M-N-R-R1-T-V-W-Z1	96605	B-V
34092	B-F-F1-R-R1-V	96310	B-M-W	96505	A-B-C-C1-C2-F-F1-F3-I3-L-M-N-R-R1-T-V-W-Z1	96606	B-V
34093	B-F-F1-R-R1-V	96319	B-C-M-R-W	96507	A-B-C1-C2-F-F1-H-J-L-M-N-T-V-Z1	96607	B-V
34094	B-F-F1-R-R1-V	96321	B-F-F1-F2-H-M-W-Z1	96510	B-I3-N-V	96608	B-E2-F-H1-R1-U2-V-Z1
34095	B-F-F1-R-R1-V	96322	B-F-F1-F2-H-M-W-Z1	96511	B-I3-N-V	96609	B-E2-F-H1-R1-U2-V-Z1
96201	A-B-F-F1-F3-S-U	96323	B-C-M-R-V-W	96515	B-D-F-U3	96610	B-E2-F-H1-R1-U2-V-Z1
96202	A-B-F-F1-F3-S-U	96326	B-C-F-M-R-W	96516	B-D-F-Z1	96611	B-E2-F-H1-R1-U2-V-Z1
96203	A-B-F-F1-F3-S-U	96328	B-C-M-R-W	96517	B-F-U3-V-Z1	96612	B-V
96204	A-B-F-F1-F3-S-U	96330	B-C-M-R-W	96520	B-F-N-U3-V	96613	B-V
96205	A-B-F-F1-F3-S-U	96331	A-B-F1-J-L-M-N-S-W	96521	B-C1-C2-F-F1-J-L-M-N-R-R1-S-T-V-Z1	96615	B-F-F1-R-R1-V
96206	A-B-F-F1-F3-S-U	96336	B-C-M-R-V-W	96530	A-B-C1-C2-F-F1-H-H1-J-L-M-N-R-R1-S-T-V-Z1	96616	B-C2F-F1-R-R1-V
96207	A-B-F-F1-F3-S-U-V	96337	B-M-W	96531	A-B-C-F-F1-H-M-N-R-U-V	96617	B-F-F1-R-R1-V
96208	A-B-E-F1-F3-R-S-U	96338	A-B-F3-M-R-S-W	96532	A-B-C1-C2-F-F1-H-J-L-M-N-R-R1-S-T-V-Z1	96619	B-V
96209	A-B-C1-C2-F-F1-J-L-M-N-T-U-V-Z1	96339	B-M-V-W	96534	A-B-F-U-Z1	96620	B-F-F1-R-R1-V
96210	A-B-C1-C2-F-F1-F3-I3-L-M-N-R-R1-T-V-Z1	96343	B-M-W	96535	A-B-C1-C2-F-F1-J-L-M-N-R-R1-S-T-V-Z1	96628	B-F-F1-R-R1-V
96212	B-F-F1-F2-H-M-W-Z1	96346	B-F-F1-F2-H-M-V-W-Z1	96537	B-V-Z1	96629	B-F-F1-R-R1-V
96213	A-B-C-F1-R-U	96347	B-F-F1-F2-H-M-W-Z1	96540	B-V-Z1	96632	B-F-F1-R-R1-V
96214	A-B-C-F1-R-U	96349	B-F-F1-F2-H-M-W-Z1	96542	B-V-Z1	96633	B-V
96218	A-B-F-F1-F3-S-U	96350	B-F-F1-F2-H-M-W-Z1			96641	B-V
96224	A-B-F-F1-F3-S-U	96351	B-F-F1-F2-H-M-W-Z1			96642	B-V
96251	A-B-F-F1-F3-S-U	96362	B-F-F1-F2-M-W-Z1				
		96365	B-C-M-R-V-W				
		96367	B-C-L-M-R-W				

APO/ FPO/ DPO	See Restrictions	APO/ FPO/ DPO	See Restrictions	APO/ FPO/ DPO	See Restrictions	APO/ FPO/ DPO	See Restrictions
96643	B-F-F1-R-R1-V	96663	B-F-F1-R-R1-V	96673	B-V	96691	B-F-F1-R-R1-V
96644	B-V	96664	B-V	96674	B-F-F1-R-R1-V	96692	B-F-F1-R-R1-V
96645	B-V	96665	B-V	96675	B-F-F1-R-R1-V	96693	B-F-F1-R-R1-V
96649	B-F-F1-R-R1-V	96666	B-V	96677	B-F-F1-R-R1-V	96694	B-F-F1-R-R1-V
96650	B-F-F1-R-R1-V	96667	B-F-F1-R-R1-V	96678	B-F-F1-R-R1-V	96695	B-F-F1-R-R1-V
96657	B-F-F1-R-R1-V	96668	B-F-F1-R-R1-V	96679	B-F-F1-R-R1-V	96696	B-F-F1-R-R1-V
96660	B-F-F1-R-R1-V	96669	B-F-F1-R-R1-V	96681	B-V	96698	B-V
96661	B-F-F1-R-R1-V	96670	B-V	96682	B-V		
96662	B-F-F1-R-R1-V	96671	B-F-F1-R-R1-V	96683	B-V		
		96672	B-F-F1-R-R1-V	96686	B-V		

RESTRICTIONS

LEGEND

PS Form 2976, *Customs — CN 22 (Old C 1) and Sender's Declaration* (green label)

PS Form 2976-A, *Customs Declaration and Dispatch Note*

PS Form 2976-B, *Priority Mail Express International Shipping Label and Customs Form*

ATF	= Bureau of Alcohol, Tobacco, Firearms, and Explosives
Box C	= Department of State (DOS) contractor personnel
Box R	= Retired military personnel
DPO	= Diplomatic Post Office
MPO	= Military Post Office
PACT	= Prevent All Cigarette Trafficking Act
PAL	= Parcel Airlift
PMEMS	= Priority Mail Express Military Service
PUB 52	= Publication 52, <i>Hazardous, Restricted, and Perishable Mail</i>
SAM	= Space Available Mail
USDA	= United States Department of Agriculture

Note: Mail order catalogs are prohibited as SAM or PAL mail.

A. Securities, currency, or precious metals, including in their raw, unmanufactured state, are prohibited. Official Mail shipments are exempt from this restriction.

A1. Reserved for future use.

A2. Reserved for future use.

B. Regardless of mail class, a customs declaration (PS Form 2976, PS Form 2976-A, or PS Form 2976-B) is required for all items weighing 16 ounces or more or any item (regardless of weight) containing potentially dutiable mail contents (e.g., merchandise or goods) addressed to or from this ZIP Code. All PMEMS mailpieces (regardless of mail contents or weight) addressed to or from this ZIP Code must bear a properly completed PS Form 2976-B. The surface area of the address side of the mailpiece must be large enough to contain the applicable customs declaration. The following exceptions apply:

- Known mailers are exempt from providing customs documentation on non-dutiable letters or printed matter, except for Priority Mail Express, which requires a customs form for all contents and weights. (A known mailer is a business mailer who enters volume mailings through a business mail entry unit (BMEU) or other bulk mail acceptance location, pays postage through an advance deposit account, uses a permit imprint for postage payment, and submits a completed postage statement at the time of entry that certifies that the mailpieces contain no dangerous materials that are prohibited by postal regulations.)
- All federal, state, and local government agencies whose mailings are regarded as "Official Mail" are exempt from providing customs documentation on any item addressed to an MPO except for those MPOs to which restriction "B2" applies and except for Priority Mail Express, which requires a customs form from all mailers.
- If mailpiece is endorsed "Contents for Official Use — Exempt from Customs Requirements."

B2. All federal, state, and local government agencies must complete customs documentation when sending potentially dutiable mail addressed to or from this MPO or DPO.

C. Cigarettes and other tobacco products, including tobacco leaves, chewing and pipe tobacco, snuff, and cigars are prohibited, including those that are authorized in Publication 52 under PACT.

C1. Obscene and horror articles, images, prints, paintings, cards, films, videotapes, comic books, etc., are prohibited.

C2. E-cigarettes and related products (e.g., nicotine liquids, e-liquids, parts, or supplies) are prohibited.

D. Coffee is prohibited.

E. Medicines (prescription, over-the-counter, vitamins, and supplements) are prohibited when mailed to individuals for human or animal use. This prohibition does not apply when medicines are sent as Official Mail only between specifically designated agencies such as pharmaceutical distributors, hospitals, clinics, and pharmacies.

E1. Mailers are responsible to ensure that all medicines and vaccines conform to host nation laws.

E2. Any matter depicting nude or seminude persons, pornographic, or sexual items are prohibited. Non-authorized political materials are prohibited. Religious materials contrary to the Islamic faith are prohibited in bulk quantities, but individual items for the personal use of the addressee are permissible.

E3. Radio transceivers, cordless/cellular telephones, global positioning systems, scanners, base stations, and handheld transmitters are prohibited.

F. Firearms of any type are prohibited, except firearms mailed to or by official U.S. government agencies. This restriction does not apply to firearms mailed from this MPO ZIP Code, provided ATF and USPS regulations are met. Antique firearms do not require an ATF form.

F1. Weapons of any type are prohibited.

F2. Mailing firearms to or from this MPO ZIP Code is restricted to one shotgun and one single shot .22 caliber rifle per individual.

F3. Replica weapons and inert explosive devices (such as grenades) and weapons parts are prohibited.

G. Parcels of any class are prohibited.

H. Meats, including preserved meats, bones, skin, hair, feathers, horns or hoofs of hoofed animals, and wool samples whether hermetically sealed or not, are prohibited.

H1. Pork or pork by-products are prohibited.

I. Reserved for future use.

I1. Reserved for future use.

I2. Reserved for future use.

I3. Mail of all classes must fit in a mail sack. Mail may not exceed the following dimensions:

- Maximum length 27 inches.
- Maximum width 14 inches.
- Maximum height 14 inches.

J. Standard Post and Parcel Select parcels may not exceed 108 inches in length and girth combined.

K. Reserved for future use.

L. All Official Mail is prohibited.

M. Fruits, vegetables, live animals, and live plants are prohibited.

N. Registered Mail service is prohibited.

O. Reserved for future use.

P. Official Mail only.

Q. Mail may not exceed 66 pounds, and size is limited to 42 inches maximum length and 72 inches maximum length and girth combined.

R. All alcoholic beverages, including those mailable under Publication 52, Part 421, are prohibited.

R1. Materials used in the production of alcoholic beverages (i.e., distilling material, hops, malts, yeast, etc.) are prohibited.

S. Synthetic cannabinoids used to stimulate the central nervous system commonly known as "synthetic marijuana," "K2," or "Spice" are prohibited.

T. Mailings of household shipments and case lots of food to or from an MPO require military transportation office approval prior to mailing. Mailings to or from a DPO require pre-approval from the Diplomatic Pouch and Mail Director.

U. Mail addressed to Retirees (Box R) is limited to 16 ounces and up to a 90-day supply of TRICARE medications. This restriction does not apply to mail endorsed "Free Matter for the Blind or Handicapped."

U1. Mail is limited to First-Class Mail items, including audio and video media, weighing 13 ounces or less. This limitation does not apply to Official Mail.

U2. Retirees (Box R) are not authorized mail service.

U3. Reserved for future use.

U4. Mail addressed to Box C is limited to 2 lbs.

V. PMEMS is not available.

V1. Electronic Delivery status information for Extra Services is not available on *USPS.com*. Manual record of delivery may be available upon request.

W. Hermetically sealed packages of meat products bearing USDA certification, such as dried beef, salami, and sausage, may be mailed. 200 grams of tobacco per parcel are permitted duty free.

X. Cremated remains are prohibited.

Y. Mail is limited to First-Class Mail and Priority Mail items only. This restriction also applies to Official Mail.

Z. No outside pieces (OSPs).

Z1. The following restriction is applicable only to International Service Centers (ISC)/Exchange Offices. An Anti-Pilferage Seal (Item No O817E or O818A) is required on all pouches and sacks.

— *International Network Operations,
Global Business, 4-26-18*

Thrift Savings Plan Fact Sheet

ANNUAL RETURNS	G Fund	F Fund	U.S. Aggregate Index	C Fund	S&P 500 Stock Index	S Fund	Dow Jones U.S. Completion TSM Index	I Fund	EAFE Stock Index
2006	4.93	4.40	4.33	15.79	15.79	15.30	15.28	26.32	26.34
2007	4.87	7.09	6.97	5.54	5.49	5.49	5.39	11.43	11.17
2008	3.75	5.45	5.24	-36.99	-37.00	-38.32	-39.03	-42.43	-43.38
2009	2.97	5.99	5.93	26.68	26.46	34.85	37.43	30.04	31.78
2010	2.81	6.71	6.54	15.06	15.06	29.06	28.62	7.94	7.75
2011	2.45	7.89	7.84	2.11	2.11	-3.38	-3.76	-11.81	-12.14
2012	1.47	4.29	4.22	16.07	16.00	18.57	17.89	18.62	17.32
2013	1.89	-1.68	-2.02	32.45	32.39	38.35	38.05	22.13	22.78
2014	2.31	6.73	5.97	13.78	13.69	7.80	7.63	-5.27	-4.90
2015	2.04	0.91	0.55	1.46	1.38	-2.92	-3.42	-0.51	-0.81
2016	1.82	2.91	2.65	12.01	11.96	16.35	15.75	2.10	1.00
2017	2.33	3.82	3.54	21.82	21.83	18.22	18.12	25.42	25.03

MONTHLY RETURNS	G Fund	F Fund	U.S. Aggregate Index	C Fund	S&P 500 Stock Index	S * Fund	Dow Jones U.S. Completion TSM Index	I * Fund	EAFE Stock Index
2017									
Apr	0.20	0.81	0.77	1.03	1.03	1.15	1.11	2.62	2.54
May	0.19	0.81	0.77	1.41	1.41	-0.77	-0.78	3.76	3.67
June	0.19	-0.09	-0.10	0.62	0.62	2.33	2.31	-0.18	-0.18
July	0.19	0.43	0.43	2.05	2.06	1.11	1.11	2.88	2.88
Aug	0.19	0.91	0.90	0.30	0.31	-0.41	-0.41	-0.03	-0.04
Sept	0.17	-0.48	-0.48	2.06	2.06	4.26	4.22	2.52	2.49
Oct	0.19	0.07	0.06	2.33	2.33	1.41	1.40	1.54	1.52
Nov	0.19	-0.11	-0.13	3.07	3.07	2.90	2.86	1.06	1.05
Dec	0.20	0.48	0.46	1.11	1.11	0.47	0.52	1.60	1.61
2018									
Jan	0.20	-1.14	-1.15	5.72	5.73	3.34	3.35	5.00	5.02
Feb	0.21	-0.96	-0.95	-3.69	3.69	-3.79	-3.79	-5.07	-4.51
Mar	0.24	0.65	0.64	-2.55	-2.54	0.69	0.70	-0.76	-1.80
LAST 12 MONTHS	2.40	1.37	1.20	13.96	13.99	13.18	13.08	15.56	14.80

The G Fund is managed internally by the Federal Retirement Thrift Investment Board. Assets of the F, C, S, and I Funds are managed externally. The Board currently has contracts with BlackRock Institutional Trust Company, N.A., to manage the F, C, S, and I Fund assets. The F, C, S, and I Funds invest in commingled trust funds, in which the assets of tax-deferred employee benefit plans are combined and invested together. The F, C, S, and I Funds and the BlackRock funds are passively managed index funds.

Future performance of the funds will vary and may be significantly different from the returns shown above. See the *Summary of the Thrift Savings Plan* for detailed information about the funds and their investment risks. The monthly returns of the TSP Funds represent net earnings for the month after deduction of accrued administrative expenses and, except for the G Fund, after deduction of trading costs and accrued investment management fees as well. The returns for the four indexes shown do not include any of these deductions.

* Implemented May 2001.

See next page for L Funds.

L Funds

Annual Returns	L Income	L 2020	L 2030	L 2040	L 2050
2006	7.59	13.72	15.00	16.53	
2007	5.56	6.87	7.14	7.36	
2008	-5.09	-22.77	-27.50	-31.53	
2009	8.57	19.14	22.48	25.19	
2010	5.74	10.59	12.48	13.89	
2011	2.23	0.41	-0.31	-0.96	
2012	4.77	10.42	12.61	14.27	15.85
2013	6.97	16.03	20.16	23.23	26.20
2014	3.77	5.06	5.74	6.22	6.37
2015	1.85	1.35	1.04	0.73	0.45
2016	3.58	5.47	7.07	7.90	8.65
2017	6.19	9.86	14.54	16.77	18.81
Monthly Returns	L Income	L 2020	L 2030	L 2040	L 2050
2017					
Apr	0.50	0.76	1.07	1.21	1.34
May	0.55	0.86	1.22	1.38	1.51
June	0.26	0.35	0.46	0.52	0.58
July	0.60	0.96	1.42	1.63	1.82
Aug	0.22	0.21	0.19	0.17	0.15
Sept	0.60	1.02	1.60	1.87	2.14
Oct	0.54	0.83	1.27	1.46	1.63
Nov	0.62	0.99	1.55	1.80	2.03
Dec	0.41	0.57	0.81	0.92	1.00
2018					
Jan	1.10	1.84	3.12	3.66	4.15
Feb	-0.70	-1.34	-2.48	-2.98	-3.41
Mar	-0.08	-0.33	-0.78	-0.96	-1.11
LAST 12 MONTHS	4.72	6.90	9.75	11.06	12.26

Freely Associated States Restrictions

We list the mailing restrictions for Freely Associated States (FAS) in the Pull-Out section of the *Postal Bulletin*. All FAS Restrictions will be updated periodically.

Freely Associated States

Mail addressed to freely associated states is subject to certain conditions or restrictions of mailing regarding content, preparation, and handling. The following FAS Restrictions table outlines these conditions as listed by each affected FAS ZIP Code™ through the use of footnoted mailing restrictions codes (see the [Restrictions](#) following the table). For more information on available extra services for FAS destinations, see *Mailing Standards of the United States Postal Service, Domestic Mail Manual (DMM®)*, part 503.

Acceptance clerks must use the table with the RSS terminal to determine which FAS ZIP Codes are active and which conditions of mailing apply. Send inquiries to Randall Sobol at randall.f.sobol@usps.gov.

FAS Restrictions Table

FAS Table	See Restrictions
96939	A, B
96940	A, B
96941	A, B
96942	A, B
96943	A, B
96944	A, B
96960	A, B
96970	A, B, D
Marshall Islands	C
Federated States of Micronesia	C

RESTRICTIONS LEGEND

PS Form 2976, *Customs Declaration CN 22 – Sender's Declaration*

PS Form 2976-A, *Customs Declaration and Dispatch Note*

FAS = Freely Associated State

- A.** Bank currency (coin and paper) is prohibited.
- B.** Signature Confirmation, Signature Confirmation Restricted Delivery, Adult Signature Requested, Adult Signature Restricted Delivery, Certified Mail Adult Signature Required, and Certified Mail Adult Signature Restricted Delivery not available.
- C.** COD is prohibited.
- D.** Betel nut (*Areca catechu*) is prohibited.

— *Asia-Pacific Relations,
Global Business, 4-26-18*

Stamp Services

Update: Stamp Announcement 18-13: United States Air Mail Stamp

In the article titled “Stamp Announcement 18-13: United States Air Mail Stamp,” in *Postal Bulletin* 22490 (3-29-18, page 45), the *United States Air Mail* first-day-of-issue (FDOI) postmarks and the special dedication postmarks were unavailable.

The FDOI postmarks for the *United States Air Mail* stamp are now available and shown on pages [34-35](#). The special dedication postmarks are shown here:

Special Dedication Postmarks

Only the following pictorial postmark is permitted for the *United States Air Mail* stamp. The word “Station” or the abbreviation “STA” is required somewhere in the design, because it will be a temporary station.

Guidelines for Finalizing the United States Air Mail Stamp Pictorial Postmark Art



To finalize the *United States Air Mail* stamp pictorial postmark art, insert the date, city, state, and ZIP Code™ of the physical location of your event adjacent to the stamp image. Overall dimensions of the pictorial postmark must not exceed 4 inches (horizontally) by 2 inches (vertically). Collectors prefer 3-1/2 inches by 1-inch dimensions.

The Postal Service™ must make all special postmarks known to collectors through advance publicity in the *Postal Bulletin*. Therefore, all special dedication cancellations must be reported to Stamp Services 4 weeks before the event using PS Form 413, *Pictorial Postmark Announcement/ Report*. To get a copy of the form, go to blue.usps.gov/formmgmt/forms/ps413.pdf.

— Stamp Services, Marketing, 4-26-18

Correction: Pictorial Postmarks Announcement

In the article titled “Pictorial Postmarks Announcement” in *Postal Bulletin* 22491 (4-12-18, page 43), the date of the pictorial postmark for Council Grove Station was incorrect.

The correct date is shown here:



April 21, 2018

Santa Fe Trail Association
Council Grove Station
Postmaster
103 West Main
Council Grove, KS 66846-9998

— Stamp Services, Marketing, 4-26-18

Pictorial Postmarks Announcement

As a community service, the Postal Service™ offers pictorial postmarks to commemorate local events celebrated in communities throughout the nation. A list of events for which pictorial postmarks are authorized appears on the following pages. The sponsor of the pictorial postmark appears in italics under the date. Also provided are illustrations of these postmarks.

People attending these local events may obtain the postmark in person at the temporary Post Office™ station established there. Those who cannot attend the event but who wish to obtain the postmark may submit a mail order request. Pictorial postmarks are available only for the dates indicated, and *requests must be postmarked no later than 30 days following the requested pictorial postmark date.*

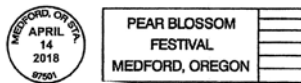
All requests must include a stamped envelope or postcard bearing at least the minimum First-Class Mail® postage. Items submitted for postmark may not include

postage issued after the date of the requested postmark. Such items will be returned unserved.

Customers wishing to obtain a postmark must affix stamps to any envelope or postcard of their choice, address the envelope or postcard to themselves or others, insert a card of postcard thickness in envelopes for sturdiness, and tuck in the flap. Place the envelope or postcard in a larger envelope and address it to: Pictorial Postmarks, followed by the Name of the Station, Address, City, State, ZIP+4® Code, as listed next to the postmark.

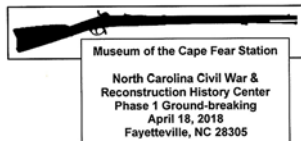
Customers can also send stamped envelopes and postcards without addresses for postmark, as long as they supply a larger envelope with adequate postage and their return address. After applying the pictorial postmark, the Postal Service returns the items (with or without addresses) under addressed protective cover.

The following pictorial postmarks have been extended for 30 days:



April 14–15, 2018

SOPEX
Medford, OR Station
Postmaster/Philatelic Services
173 Ehrman Way
Medford, OR 97501-9998



April 18, 2018

The North Carolina Civil War and Reconstruction History Center
Museum of the Cape Fear Station
Postmaster
301 Green Street, Suite 200
Fayetteville, NC 28301-9998



April 21, 2018

United States Postal Service
Portsmouth Village Station
Postmaster
PO Box 9997
Ocracoke, NC 27960-9997



April 21, 2018

Stephen Decatur Chapter 4, Universal Ship Cancellation Society
Commissioning Station — USS Portland
Philatelic Services/Postmarks
PO Box 2229
Portland, OR 97208-2229



May 1, 2018

City of San Antonio Tricentennial Committee
Tricentennial Station
Postmaster
1140 South Laredo Street
San Antonio, TX 78204-9998



April 28, 2018
Boyce Railway Foundation Depot
 DK Office Station
 Postmaster
 112 West Main Street
 Boyce, VA 22620-9998



May 5, 2018
Friends of Vista House
 100th Anniversary Station
 Postmaster/Philatelic Services
 36046 East Historic Columbia River Highway
 Corbett, OR 97019-9998

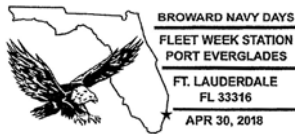


April 28, 2018
Kalamazoo Stamp Club
 WWI Polar Bear Station
 Postmaster
 PO Box 9998
 Comstock, MI 49041-9998



Thunderbase Station
 Chillicothe, OH 45601
 May 5, 2018

May 5, 2018
Boy Scouts of America
 Thunderbase Station
 Postmaster
 40 South Walnut Street
 Chillicothe, OH 45601-9998



April 30, 2018
Stephen Decatur Chapter #4, Universal Ship Cancellation Society
 Fleet Week Station — Port Everglades
 Postmaster
 1900 West Oakland Park Boulevard, Suite 103
 Fort Lauderdale, FL 33310-9998



May 5, 2018
Sam Quito Padilla
 Sevilleta National Wildlife Refuge Station
 Postmaster
 PO Box 9998
 La Joya, NM 87028-9998



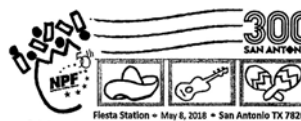
May 1, 2018
American Legion
 Lueders Annual Fish Day Station
 Postmaster
 125 East Main
 Lueders, TX 79533-9998



May 7, 2018
United States Postal Service
 Lone Star Station
 Manager Retail
 1 Post Office Drive
 San Antonio, TX 78284-8401



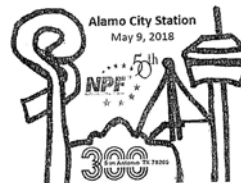
May 3, 2018
Wilmington Philatelic Society
 Sub Station
 Postmaster
 152 North Front Street
 Wilmington, NC 28401-9998



May 8, 2018
United States Postal Service
 Fiesta Station
 Manager Retail
 1 Post Office Drive
 San Antonio, TX 78284-8401



May 5, 2018
WISCOPEX
 WISCOPEX Station
 Postmaster
 PO Box 9998
 Reedsburg, WI 53959-9998



May 9, 2018
United States Postal Service
 Alamo City Station
 Manager Retail
 1 Post Office Drive
 San Antonio, TX 78284-8401

— Stamp Services, Marketing, 4-26-18



38percent

Percentage of online shoppers
in a 2018 survey who expect free,
2-day shipping from retailers

How to Order the First-Day-of-Issue Digital Color or Traditional Postmarks

Customers have 120 days to obtain the first-day-of-issue postmarks by mail. Each cover must have sufficient postage to meet First-Class Mail® requirements. Customers may purchase new stamps at their local Post Office™, by phone at 800- 782-6724, or on The Postal Store® website at usps.com/shop.

Digital Color Postmarks

Only select stamp issues offer a digital color postmark. Customers may submit #6 or #10 envelopes constructed of paper rated as “laser safe.” The Postal Service™ recommends envelopes of 80-pound Accent Opaque, acid-free, 9/16-inch side seams with no glue on the flap. The maximum size of all digital color postmarks is 2 inches high by 4 inches long. Allow sufficient space on the envelope to accommodate the postmark. Do not use self-adhesive labels for addresses on the envelope. Two test envelopes must be included. There is a minimum of 10 envelopes at 50 cents per postmark required at the time of servicing. Customers must submit a check, money order, or credit card for payment.

The Postal Service reserves the right to not accept hand-painted and other cachet envelopes that are not compatible with our digital color postmark equipment. The Postal Service also reserves the right to substitute traditional black rubber postmarks if use of nonspecified envelopes results in poor image quality or damage to equipment.

Customers must affix the stamps to the envelopes and address them to themselves or others for return through

the mail. Or, they may include an additional self-addressed return envelope, large enough to accommodate their canceled items, with sufficient postage affixed for return of their postmarked items. Address customer requests for digital color postmarks to:

FDOI – (Name of Stamp Issue)
 USPS Stamp Fulfillment Services
 8300 NE Underground Drive, Suite 300
 Kansas City, MO 64144-9900

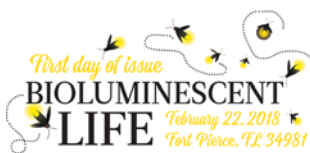
After applying the first-day-of-issue postmark, the Postal Service will return the envelopes to the customer by U.S. Mail®.

Traditional Postmarks

Customers must affix the stamps to the envelopes and address them to themselves or others for return through the mail. Or, they may include an additional self-addressed return envelope, large enough to accommodate their canceled items, with sufficient postage affixed for return of their postmarked items. Address customer requests for traditional postmarks to:

FDOI – (Name of Stamp Issue)
 USPS Stamp Fulfillment Services
 8300 NE Underground Drive, Suite 300
 Kansas City, MO 64144-9900

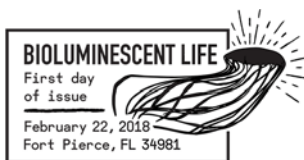
After applying the first-day-of-issue postmark, the Postal Service will return the envelopes to the customer by U.S. Mail™. There is no charge for the first 50 postmarks. There is a 5-cent charge for each additional postmark over 50. Customers must submit a check, money order, or credit card for payment.



Digital Color Pictorial

FDOI – Bioluminescent Life Stamps
 USPS Stamp Fulfillment Services
 8300 NE Underground Drive, Suite 300
 Kansas City, MO 64144-9900

June 22, 2018



Black and White Pictorial

FDOI – Bioluminescent Life Stamps
 USPS Stamp Fulfillment Services
 8300 NE Underground Drive, Suite 300
 Kansas City, MO 64144-9900

June 22, 2018



Digital Color Pictorial

FDOI – Illinois Statehood Stamp
 USPS Stamp Fulfillment Services
 8300 NE Underground Drive, Suite 300
 Kansas City, MO 64144-9900

July 5, 2018



Black and White Pictorial

FDOI – Illinois Statehood Stamp

USPS Stamp Fulfillment Services
8300 NE Underground Drive, Suite 300
Kansas City, MO 64144-9900

July 5, 2018



Digital Color Pictorial

FDOI – Mister Rogers Stamp

USPS Stamp Fulfillment Services
8300 NE Underground Drive, Suite 300
Kansas City, MO 64144-9900

July 23, 2018



March 23, 2018 • Pittsburgh, PA 15290

Black and White Pictorial

FDOI – Mister Rogers Stamp

USPS Stamp Fulfillment Services
8300 NE Underground Drive, Suite 300
Kansas City, MO 64144-9900

July 23, 2018



Digital Color Pictorial

FDOI – STEM Education Stamp

USPS Stamp Fulfillment Services
8300 NE Underground Drive, Suite 300
Kansas City, MO 64144-9900

August 6, 2018



Black and White Pictorial

FDOI – STEM Education Stamp

USPS Stamp Fulfillment Services
8300 NE Underground Drive, Suite 300
Kansas City, MO 64144-9900

August 6, 2018



Digital Color Pictorial

FDOI – Peace Rose Stamp

USPS Stamp Fulfillment Services
8300 NE Underground Drive, Suite 300
Kansas City, MO 64144-9900

August 21, 2018



Black and White Pictorial

FDOI – Peace Rose Stamp

USPS Stamp Fulfillment Services
8300 NE Underground Drive, Suite 300
Kansas City, MO 64144-9900

August 21, 2018



Digital Color Pictorial

FDOI – United States Air Mail Stamp

USPS Stamp Fulfillment Services
8300 NE Underground Drive, Suite 300
Kansas City, MO 64144-9900

September 1, 2018



Black and White Pictorial

FDI – United States Air Mail Stamp
USPS Stamp Fulfillment Services
8300 NE Underground Drive, Suite 300
Kansas City, MO 64144-9900

September 1, 2018



Digital Color Pictorial

FDI – Sally Ride Stamp
USPS Stamp Fulfillment Services
8300 NE Underground Drive, Suite 300
Kansas City, MO 64144-9900

September 23, 2018



Black and White Pictorial

FDI – Sally Ride Stamp
USPS Stamp Fulfillment Services
8300 NE Underground Drive, Suite 300
Kansas City, MO 64144-9900

September 23, 2018

– Stamp Services, Marketing, 4-26-18



1973

Year USPS issued
its first Love stamp

USPS® Introduces *Bioluminescent Life*

Forever® Stamps

On Sale Nationwide:
February 22, 2018.

