

# Phylogeny of the manta and devilrays (Chondrichthyes: Mobulidae), with an updated taxonomic arrangement for the family

WILLIAM T. WHITE<sup>1,2\*</sup>, SHANNON CORRIGAN<sup>3</sup>, LEI YANG<sup>3</sup>, AARON C. HENDERSON<sup>4</sup>, ADAM L. BAZINET<sup>5</sup>, DAVID L. SWOFFORD<sup>6</sup> and GAVIN J. P. NAYLOR<sup>3,7</sup>

<sup>1</sup>CSIRO National Research Collections Australia – Australian National Fish Collection, Hobart, TAS 7000, Australia

<sup>2</sup>CSIRO Oceans & Atmosphere, Hobart, TAS 7000, Australia

<sup>3</sup>Department of Biology, College of Charleston, Charleston, SC 29401, USA

<sup>4</sup>Department of Natural Sciences, School of Science and Computing, Galway-Mayo Institute of Technology, Dublin Road, Galway H91 T8NW, Ireland

<sup>5</sup>Laboratory of Molecular Evolution, Center for Bioinformatics and Computational Biology, University of Maryland, College Park, MD 20742, USA

<sup>6</sup>Department of Biology, Duke University, Durham, NC 27708, USA

<sup>7</sup>Florida Museum of Natural History, University of Florida, Gainesville, FL 32611, USA

Received 6 April 2016; revised 30 January 2017; accepted for publication 19 March 2017

DNA sequence data from mitochondrial genomes and *c.* 1000 nuclear exons were analysed for a complete taxon sampling of manta and devilrays (Mobulidae) to estimate a current molecular phylogeny for the family. The resulting inferences were combined with morphological information to adopt an integrated approach to resolving the taxonomic arrangement of the family. The members of the genus *Manta* were found to consistently nest within the *Mobula* species and consequently the genus *Manta* is placed into the synonymy of *Mobula*. *Mobula eregoodootenkee*, *M. japanica* and *M. rochebrunei* were each found to be junior synonyms of *M. kuhlii*, *M. mobular* and *M. hypostoma*, respectively. The mitochondrial and nuclear tree topologies were in agreement except for the placement of *M. tarapacana* which was basal to all other mobulids in the nuclear exon analysis, but as the sister group to the *M. alfredi*–*M. birostris*–*M. mobular* clade in the mitochondrial genome analysis. Results from this study are used to revise the taxonomy for the family Mobulidae. A single genus is now recognized (where there were previously two) and eight nominal species (where there were previously 11).

ADDITIONAL KEYWORDS: DNA hybridization capture – *Manta* – *Mobula* – phylogenetics – taxonomy.

## INTRODUCTION

The manta and devilrays of the family Mobulidae constitute some of the most charismatic species of rays. They are large (up to 7 m disc width), planktivorous species, occurring worldwide in tropical and temperate waters (Last & Stevens, 2009). Despite the public attention they receive, there is still uncertainty regarding their taxonomy, phylogeny, life history and population structure. This was highlighted by Couturier *et al.* (2012), whose comprehensive review of available biological and

ecological data for members of the Mobulidae revealed large gaps for many parameters. In fact, the majority of studies investigating the biology and ecology of mobulid rays have focused on particular species in specific locations, limiting our ability to make generalizations at higher taxonomic levels. Very few broad regional or global studies of mobulid ray biology and ecology have been undertaken. Taxonomic research on this group has been complicated by poor representation of mobulids in biological collections because of their large size. Notarbartolo di Sciara (1987) provided a comprehensive revision of the genus *Mobula*, including

\*Corresponding author. E-mail: [William.White@csiro.au](mailto:William.White@csiro.au)

a description of a new species. That study represented a major step forward in our understanding of mobulid taxonomy. Marshall, Compagno & Bennett (2009) revised the genus *Manta*, resurrecting a second species, *M. alfredi* (Krefft, 1868), as well as acknowledging a third putative species. Most recently, Notarbartolo di Sciara *et al.* (2016) provided a redescription of the poorly known *Mobula kuhlii* (Müller & Henle, 1841).

The Mobulidae currently comprises two genera, *Manta* and *Mobula*. The genus *Manta* encompasses two nominal species, the reef manta *M. alfredi* (Krefft, 1868) and the giant manta *M. birostris* (Walbaum, 1792), and possibly a third species (*M. sp. cf. birostris sensu* Marshall *et al.*, 2009). There are nine currently recognized species in the genus *Mobula*: the pygmy devilray *M. eregoodootenkee* (Bleeker, 1959), the Atlantic devilray *M. hypostoma* (Bancroft, 1831), the spinetail devilray *M. japanica* (Müller & Henle, 1841), the shortfin devilray *M. kuhlii*, the giant devilray *M. mobular* (Bonnaterre, 1788), Munk's devilray *M. munkiana* Notarbartolo di Sciara, 1987, the lesser Guinean devilray *M. rochebrunei* (Vaillant, 1879), the Chilean devilray *M. tarapacana* (Philippi, 1892), and the bentfin devilray *M. thurstoni* (Lloyd, 1908). Previous studies of mobulid phylogeny, based on both morphological (Adnet *et al.*, 2012; Paig-Tran *et al.*, 2013) and molecular data (Aschliman, 2011, 2014; Naylor *et al.*, 2012b; Poortvliet *et al.*, 2015) indicate that the family is a monophyletic lineage comprising three clades. One clade includes the larger mobulid species *Manta* spp., *M. tarapacana*, *M. mobular* and *M. japanica*. The remaining two clades comprise the smaller species *M. kuhlii*–*M. eregoodootenkee*–*M. thurstoni* and *M. munkiana*–*M. rochebrunei*–*M. hypostoma*.

Despite this progress in characterizing mobulid diversity, mobulid taxonomy overall remains largely unresolved due to a very complicated nomenclatural history and the fact that phylogenetic inferences have been limited by gaps in taxonomic and/or genomic sampling. Notable long-standing uncertainties regarding mobulid taxonomy include the validity of the genus *Manta* (Herman *et al.*, 2000; Adnet *et al.*, 2012; Paig-Tran *et al.*, 2013; Naylor *et al.*, 2012b; Aschliman, 2014; Poortvliet *et al.*, 2015), as well as distinguishing species boundaries from intraspecific geographical variants within multiple lineages of *Mobula*. Specifically, gross morphological and/or genetic similarities have been noted between species pairs *M. kuhlii*/*M. eregoodootenkee*, *M. hypostoma*/*M. rochebrunei* and *M. mobular*/*M. japanica* that suggest they may possibly be conspecifics (Notarbartolo di Sciara, 1987; Paig-Tran *et al.*, 2013; Poortvliet *et al.*, 2015; Henderson *et al.*, 2016). Phylogenetic inferences based on morphology have either been more concerned with the phylogenetic placement of mobulids within Myliobatiformes rather than the relationships among

mobulids, or have focused on the evolution of particular structures. Making taxonomic decisions based on these works has thus largely been limited by incomplete taxon sampling.

Molecular phylogenetic inferences have considered a more complete taxon sampling and provided interesting insights regarding the evolutionary history of Mobulidae. However, these have been exclusively based on the mitochondrial genome (Aschliman, 2011; Naylor *et al.*, 2012b; Poortvliet *et al.*, 2015). Two recent estimates of mobulid phylogeny were based on data collected from both the mitochondrial and nuclear genomes; however, only a small number of nuclear markers were assessed and the data lacked resolution (Aschliman, 2014; Poortvliet *et al.*, 2015). This is problematic, especially for the purposes of distinguishing species boundaries and making taxonomic decisions among closely related lineages. Coalescent variation and the potential for gene tree–species tree discordance (Maddison, 1997) are now well-documented and estimating phylogenies based on a small number of molecular markers is now considered insufficient for these purposes. Moreover, many factors and processes can lead to differential phylogenetic signal between the mitochondrial and nuclear genomes. These include lineage sorting, demographic asymmetries, selection and hybridization. Although taxonomic uncertainties have been discussed, all authors have favoured taxonomic stability for the group in light of their various limitations.

There is considerable concern regarding the conservation status of mobulid rays globally, evidenced by the inclusion of *Manta* spp. in Appendix II of the Convention on International Trade in Endangered Species of Wild Fauna and Flora (CITES) in 2013 (CoP16). It is argued that *Mobula* spp. are subject to much higher levels of exploitation than *Manta* spp. in some regions (e.g. Indonesia; White *et al.*, 2006) and these too were listed on CITES Appendix II in 2016 (CoP17). Further research that can inform the conservation management of these species is thus urgently required. Taxonomy is recognized as the foundation that underpins our knowledge of biodiversity (Simpfendorfer *et al.*, 2011). From a conservation management perspective, it is crucially important to accurately recognize the biodiversity within vulnerable groups, such as the mobulids, so that conservation priorities may be identified and management strategies devised that are both efficient and effective. The most robust approach to identifying taxonomic boundaries is to assess multiple data types from a large number of comparative samples. However, when considering rare and endangered animals, this becomes impractical and employing the precautionary principle may mean making taxonomic decisions based on the best available information. In this paper, we address some of the limitations of previous studies to provide an accurate taxonomic accounting of all nominal species

of mobulids and an estimate of their phylogenetic relationships. Phylogenetic analyses of DNA sequence data obtained using a targeted gene capture approach were carried out. The dataset comprised the protein coding components of the whole mitochondrial genome sequences and aligned sequences derived from more than 1000 putatively single-copy nuclear exons for all extant members of the family Mobulidae. This approach is an improvement over previous studies because the inference is based on a large number of loci from both the mitochondrial and nuclear genomes, reducing the probability of error associated with differences in the coalescent history among individual genes. Moreover, the particular gene capture approach used minimizes paralogous gene comparisons within the dataset a priori. Any discordance between our molecular phylogenetic inference and the previously recognized taxonomy of this group was resolved by undertaking a detailed examination of morphological data and the nomenclatural history for the taxa involved. We present a revised taxonomy for this iconic group of rays based on our results.

## MATERIAL AND METHODS

### TAXON SAMPLING

Specimens examined are listed in the Material Examined section. Museum acronyms follow [Fricke & Eschmeyer \(2015\)](#).

Muscle tissue samples were collected for DNA analysis from a complete taxon sampling of the mobulid rays (11 described species; tissue accessions are listed in Material Examined section), and from three out-group species (*Rhinoptera bonasus*, tissue accession GN5465; *Myliobatis aquila*, tissue accession GN7203; *Aetobatus narinari*, tissue accession GN5677). Tissue was stored in 95% ethanol or 20% salt-saturated DMSO prior to DNA extraction using the E.Z.N.A. Tissue DNA Kit (Omega Bio-Tek, Inc., Norcross, GA, USA), following the manufacturer's instructions. A single set of universal primers was used to amplify the mitochondrial DNA *NADH2* fragment by polymerase chain reaction (PCR) for all samples prior to purification and Sanger sequencing, as described in [Naylor \*et al.\* \(2012a\)](#). This fragment is particularly useful for distinguishing elasmobranch species and was used primarily to ensure that no labelling errors had occurred in the field by confirming the nominal species identification of each specimen, prior to further analysis. This was achieved by comparing the obtained sequences against a reference database curated within our laboratory that contains ~12 000 elasmobranch *NADH2* sequences, including many vouchered specimens ([Naylor \*et al.\*, 2012b](#)). The only available tissue sample of *Mobula rochebrunei* originated from the

dry holotype specimen (see Material Examined) and failed to yield any results. This species is thus not represented in our nuclear DNA analyses. However, the complete mitochondrial genome sequence, derived from this same holotype specimen, was available via Genbank (Accession number KM364992.1; [Poortvliet \*et al.\*, 2015](#)) and was included in our analyses of mitochondrial DNA data (details below).

### DATA GENERATION: LIBRARY PREPARATION, DNA HYBRIDIZATION CAPTURE AND NEXT-GENERATION SEQUENCING

Genomic DNA was quantified using a Qubit 2.0 Fluorometer (Life Technologies Corporation, California, USA). Based on an assessment of DNA quality, a single representative of each species/lineage (nominal ID confirmed via *NADH2* sequence) was chosen and subjected to targeted DNA hybridization capture for the purposes of collecting complete mitochondrial genome and nuclear exon sequences. Genomic DNA (0.5–3 µg per sample) was sheared to *c.* 500 bp using acoustic ultrasonication on a Covaris M220 Focused-ultrasonicator (Covaris, Inc., Massachusetts, USA) to form a target library for each specimen. Illumina sequencing libraries ([Meyer & Kircher, 2010](#)) were then prepared using the 'with-bead' method ([Fisher \*et al.\*, 2011](#)), following [Li \*et al.\* \(2013\)](#). Two custom biotinylated RNA bait libraries (MYbaits MYcroarray, Ann Arbor, MI, USA) were used in two separate DNA hybridization experiments per sample. The first bait library targeted the entire mitochondrial genome and included bait sequences derived from 83 batoid species. The second bait library included sequences derived from five batoid species and targeted 1088 slow-evolving, nuclear exons that were identified previously to be putatively single-copy orthologs across six available model vertebrate genomes (*Homo*, *Anolis*, *Callorhinchus*, *Danio*, *Gallus* and *Xenopus*; [Li \*et al.\* 2013](#) for details). Both the mitochondrial and nuclear bait sequences spanned the taxonomic diversity of batoids to allow capture experiments to be performed across divergent target species using a single set of baits for each marker type. Cross-species DNA hybridization capture followed the relaxed hybridization method described by [Li \*et al.\* \(2013\)](#). The enriched individual sample libraries were pooled in equimolar ratios and pooled libraries were diluted to 12–15 pM for paired-end 250–300 bp sequencing on an Illumina MiSeq benchtop sequencer (Illumina, Inc., San Diego, CA).

### SEQUENCE READ MAPPING, CONTIG ASSEMBLY AND ORTHOLOGY TESTING

Sequence reads associated with each sample were identified and sorted by their respective indices [Li \*et al.\* \(2013\)](#). Adapters and low-quality reads were



removed using cutadapt and FastQC available in the wrapper script Trim Galore! v0.3.1 (Krueger, 2012).

Trimmed mitochondrial sequence reads were imported into Geneious Pro v7.1.9 (Biomatters Ltd, Auckland, New Zealand. Available at <http://www.geneious.com>) and unique reads were retained and mapped to the reference sequence of a closely related species (either sequenced by us or downloaded from GenBank).

The amino acid sequences of the 1088 putatively single-copy nuclear exons were aligned across the six model vertebrates using the – auto option to MAFFT v7.023 (Katoh & Standley, 2013). Poorly aligned sequences were removed using trimAl v1.2rev59 (Capella-Gutierrez, Silla-Martinez & Gabaldón, 2009). The orthologous group alignments were used to build profile-hidden Markov models (pHMMs; Eddy, 1998) using HMMER (Eddy, 2011) that would serve as a reference database for assigning target sequences to orthologous groups. A BLAST (Altschul *et al.*, 1997) database was constructed from the sequences of *Callorhinchus*, which we used as our reference taxon (a chondrichthyan fish and therefore the most suitable reference taxon of the available model vertebrates, Venkatesh *et al.*, 2005). *De novo* assembly of trimmed sequence reads resulting from the enriched target libraries was performed with ABySS v1.3.6 (Birol *et al.*, 2009) using multiple *k*-mer values ( $k = 51$  to  $k = 251$ , in increments of 10). Assembled contigs were filtered, extended and merged using Trans-ABYSS v1.4.4 (Robertson *et al.*, 2010). HaMStR v13.2.3 (Ebersberger, Strauss & von Haeseler, 2009), which uses a combination of BLASTP (Altschul *et al.*, 1997), GeneWise (Birney, Clamp & Durbin, 2004) and HMMER, was used to search the assembled contigs of each sample for protein sequences that matched the database of orthologous groups. Any contig that matched a pHMM with an E-value less than  $1.0 \times 10^{-5}$  was initially considered a ‘hit’ to that orthologous group. Hits against the pHMMs were retained only if they fulfilled a reciprocal best BLAST criterion with the reference taxon. When multiple contigs fulfilled the orthology criteria for a particular locus, the sequence with the best score in the initial pHMM search was retained as the representative for that locus.

#### ALIGNMENT AND PHYLOGENETIC ANALYSES

All analyses of the *NADH2*, mitochondrial genome and nuclear exon datasets were performed in PAUP\* v4.0a148 (Swofford, 2002) unless otherwise specified.

Nucleotide sequences of the *NADH2* fragment were aligned using Geneious Pro v6.1.7. Translation of the resulting nucleotide alignment confirmed that it was in frame and free of stop codons (which may indicate sequencing errors or misalignment). The original nucleotide alignment was used for analysis and was

1044 bp in length, including 314 parsimony-informative sites (GenBank accession numbers KU999796–KU999882). In addition to being used to confirm nominal species identifications, this dataset was also used to explore intra- versus inter-specific divergences for larger sample sizes than that could be included in our DNA hybridization capture experiments. Pairwise uncorrected *p*-distance (the proportion of sites at which two sequences differ) was calculated for the *NADH2* dataset. The TVM + I + G model was selected as the most likely model of sequence evolution using the corrected Akaike Information Criterion ( $-\ln L = 5184.8$ , AICc = 10674.8; Posada & Buckley, 2004). The maximum likelihood (ML) tree was estimated using a heuristic search that applied the parameter estimates that were identified during model selection.

For ease of alignment, only the protein-coding components of the mitochondrial genomes were aligned across all taxa using Geneious Pro v7.1.9, yielding an alignment that was 11 442 bp in length, including 2711 parsimony-informative sites (GenBank accession numbers KX151642–KX151654). The complementary strand sequences were used for ND6, which is encoded on the L-strand. Again, alignment quality was confirmed via translation and incomplete stop codons were excluded from the alignment. The optimal partitioning and model scheme for the original nucleotide dataset was identified as a 17-partition scheme (Supporting Information Table S1). The ML tree was estimated using a heuristic search as described previously for the *NADH2* dataset but which applied the partitioning/model scheme and parameter estimates that were identified during model selection. Support values for nodes were obtained via nonparametric bootstrapping (100 replicates).

The identified putative nuclear ortholog protein sequences for each sample were back-translated to their original nucleotide sequences using a custom Perl script, aligned using MAFFT v7.02, and concatenated with a custom Perl script. This yielded a data matrix that represented 1082 exons, was 290 121 bp in length and 97.4% complete. The GTR + I + G model was selected as the most likely model of sequence evolution ( $-\ln L = 583\,275.2$ , AICc = 1\,166\,616.4) and ML analyses including nonparametric bootstrapping were performed as described previously. Although our DNA hybridization capture array targets exons that are known a priori to be single-copy across vertebrates, we are not able to account for ‘inparalogs’ resulting from duplication events within Chondrichthyes (Li *et al.*, 2013). We therefore attempted to remove any remaining potentially paralogous comparisons from our dataset by conducting a stringent likelihood ratio test that compared clock and non-clock-like models for each exon. Exons that had a *P*-value less than 0.05 for the likelihood ratio test of rejection of a clock model in

favour of a non-clock model were excluded from analysis as potentially including paralogous sequences. Maximum likelihood analyses were performed on the concatenated filtered dataset (144 261 sites from 614 exons; filtered nuclear data are archived in TreeBASE <https://treebase.org>; study ID S19059) in the same manner as described above (TIM + I + G model  $-\ln L$  266 500.3, AICc = 533 062.6; parameter estimates identified during model selection).

Species tree inference can be complicated by hybridization, incomplete lineage sorting (ILS) and gene duplication/loss (Maddison, 1997). Failing to account for these processes can sometimes yield incorrect estimates of the species tree (Roch & Steel, 2015). Incomplete lineage sorting is the most commonly purported cause of gene tree–species tree discordance and is typically modelled by the multi-species coalescent (Kingman, 1982). While this approach is robust to the distorting effects of ILS, it has been shown that concatenated analyses can often be more effective than multi-species coalescent approaches when the level of ILS is low (Chou *et al.*, 2015). Because we did not know the extent of ILS in the dataset a priori, we employed both a maximum likelihood analysis of the concatenated nuclear dataset and a multi-species coalescent-based approach (SVD Quartets: Chifman & Kubatko, 2014). Analyses were conducted on both the complete nuclear exon dataset and the subset of clock-like exons.

## RESULTS

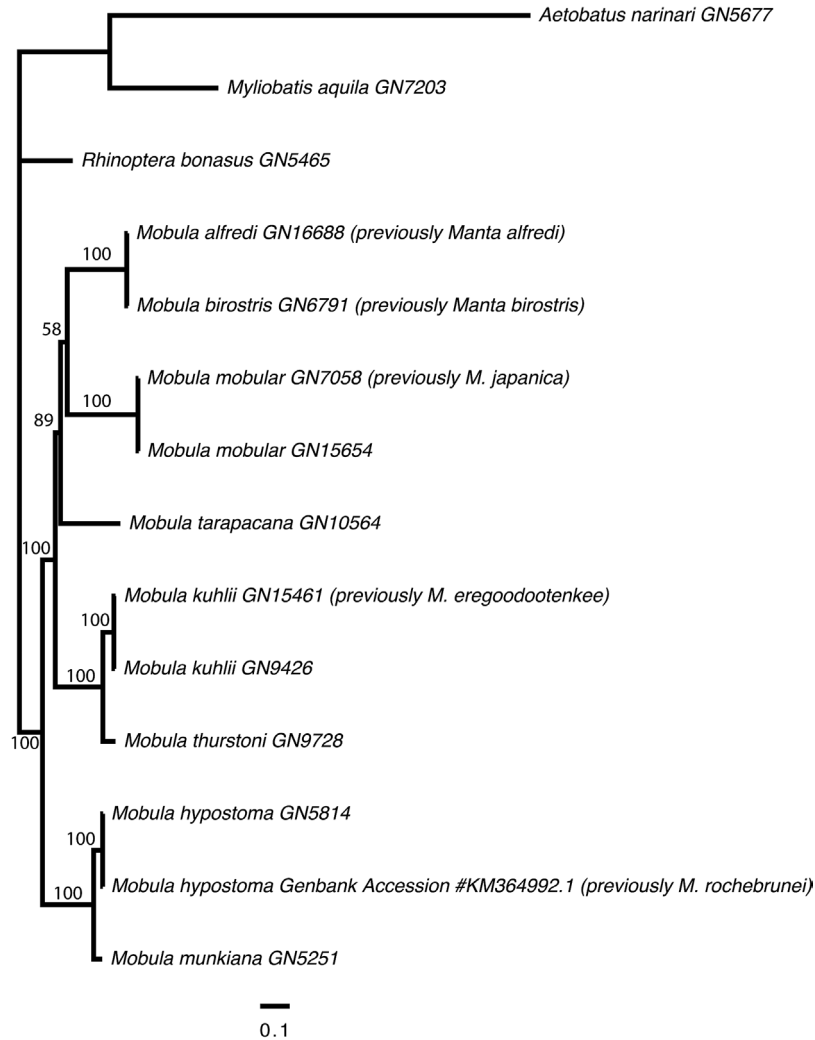
### PHYLOGENETIC ANALYSES

Nominal species identifications for all samples as well as the relationships between them based on an ML analysis of their mitochondrial *NADH2* sequences can be seen in Supporting Information Fig. S1. Intraspecific divergences based on the *NADH2* marker and uncorrected *p*-distance measure were low, ranging between 0 and 0.011, with an average of 0.003. Notably, interspecific comparisons of *p*-distance between samples nominally identified as *Manta birostris* versus *Manta alfredi* (range 0–0.012, average 0.007), *M. kuhlii* versus *M. eregoodootenkee* (range 0.000–0.008, average 0.005), *M. mobular* versus *M. japanica* (range 0.004–0.011, average 0.005) and *M. rochebrunei* versus *M. hypostoma* (range 0.001–0.003, average 0.002) were of the same magnitude as observed intraspecific divergences in closely related taxa. This is reflected in the very close relationships resolved between these species pairs based on the ML analysis of the *NADH2* data. *Manta birostris* and *M. alfredi* form a single closely related clade, as do *M. kuhlii* and *M. eregoodootenkee*, *M. mobular* and *M. japanica*, and *M. rochebrunei* and *M. hypostoma* (Supporting Information Fig. S1). Excluding these particular interspecific comparisons,

the range of all other interspecific divergences was 0.026–0.148, with an average of 0.123.

Pairwise sequence divergence based on protein coding mitochondrial genome sequences ranged from 0.001 to 0.116. Consistent with the results based on the *NADH2* data, comparisons falling at the lower end of this range were those between *M. birostris* and *M. alfredi* (*p*-distance = 0.004), *M. kuhlii* and *M. eregoodootenkee* (*p*-distance = 0.005), *M. mobular* and *M. japanica* (*p*-distance = 0.002) and *M. rochebrunei* and *M. hypostoma* (*p*-distance = 0.001). Uncorrected *p*-distance based on the mitochondrial genomes for all other pairwise comparisons were at least an order of magnitude higher. The ML tree inferred from the mitochondrial genome data is well resolved into three major clades, largely with good support. Notably, the two *Manta* species are nested within *Mobula*, forming a sister relationship with *Mobula mobular* (including the specimen nominally assigned as *M. japanica*, Fig. 1). This grouping is sister to *M. tarapacana*. It should be noted that the relationships within this clade were resolved with somewhat lower bootstrap support than other relationships in the tree and thus should be interpreted accordingly (Fig. 1). A sister relationship was resolved between *M. kuhlii* (including the specimen nominally assigned as *M. eregoodootenkee*) and *M. thurstoni* with 100% bootstrap support. Finally, *M. munkiana* is sister to *M. hypostoma* (including the specimen nominally assigned as *M. rochebrunei*), also with 100% bootstrap support. This clade is basal to a sister relationship between the *M. tarapacana*–*Manta*–*M. mobular* clade and the *M. kuhlii*–*M. thurstoni* clade.

Pairwise uncorrected *p*-distance based on the nuclear data was much lower than that observed for the mitochondrial data, ranging from 0.002 to 0.021. Again, comparisons involving *M. birostris* and *M. alfredi* (*p*-distance = 0.003), *M. kuhlii* and *M. eregoodootenkee* (*p*-distance = 0.006) and *M. mobular* and *M. japanica* (*p*-distance = 0.005) were at the lower end of this spectrum. Identical tree topologies were resolved from the concatenated ML and SVD Quartets analyses of both the complete and clock-filtered nuclear exon datasets; thus we depict only the tree resulting from the ML analysis of the filtered data. Support values are shown for the concatenated ML and SVD Quartet analyses (Fig. 2). The tree topology was well resolved, with good support and topologically similar to that obtained from analyses of the whole mitogenome data. The two *Manta* species are again nested with *Mobula*, sister to *M. mobular* (including the specimens nominally assigned as *M. japanica*) with 100% and 93% bootstrap support for the filtered concatenated ML and SVD Quartet analyses, respectively. *Mobula kuhlii* (including the specimens nominally assigned as *M. eregoodootenkee*) falls as sister to *M. thurstoni* (100% bootstrap support); and *M. hypostoma* as sister



**Figure 1.** Phylogenetic tree showing the relationships among mobulid species, relative to three outgroups (*Aetobatus narinari*, *Myliobatis aquila* and *Rhinoptera bonasus*). The tree was derived from a Maximum Likelihood analysis of an alignment of the protein coding components of the mitochondrial genomes (11 442 sites) under a partitioned model of molecular evolution. Bootstrap support values are displayed on the nodes.

to *M. munkiana* (100% bootstrap support). The major difference between the tree topologies derived from the nuclear and mitochondrial analyses concerns the placement of *M. tarapacana*. In the nuclear data, *M. tarapacana* falls basal to all other mobulid lineages with 100% and 96% bootstrap support for the filtered concatenated ML and SVD Quartet analyses, respectively, whereas it forms a clade with *M. birostris*, *M. alfredi* and *M. mobular* in the mitochondrial analyses.

#### TAXONOMIC IMPLICATIONS

##### GENUS *MOBULA* RAFINESQUE, 1810

*Mobula* Rafinesque, 1810, 48, 61 (type species *Mobula auriculata* Rafinesque, 1810; by monotypy)

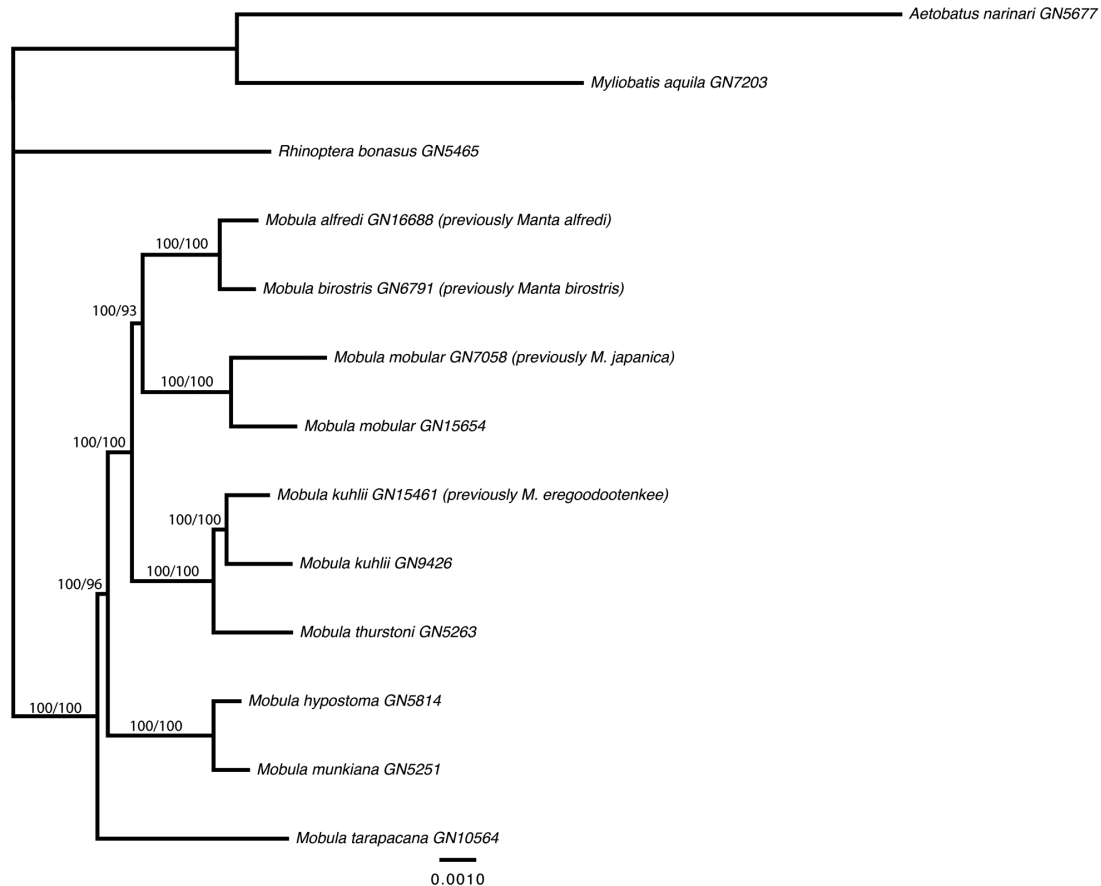
*Apterurus* Rafinesque, 1810: 48, 62 (type species *Apterurus fabronii* Rafinesque, 1810; by monotypy)  
*Cephalopterus* Risso, 1810: 14 (type species *Raja giorna* Lacepède, 1803; by subsequent designation)  
*Apturus* Rafinesque, 1815: 93 (emended spelling for *Apterurus* Rafinesque, 1810)

*Cephaloptera* Cuvier, 1816: 138 (type species *Raja cephaloptera* Bloch & Schneider, 1801; by absolute tautonymy)

*Dicerobatus* Blainville, 1816: 112 (type species *Raja mobular* Bonnaterre, 1788; by monotypy)

*Dicerobatis* Blainville, 1825: 40 (type species *R. mobular* Bonnaterre, 1788; unjustified emendation of *Dicerobatus* Blainville)

*Manta* Bancroft, 1829: 454 (type species *Cephalopterus manta* Bancroft, 1829; by monotypy)



**Figure 2.** Phylogenetic tree showing the relationships among mobulid species, relative to three outgroups (*Aetobatus narinari*, *Myliobatis aquila* and *Rhinoptera bonasus*). The tree was derived from an ML analysis of a concatenated alignment of 614 ‘clock-like’ exons (144 261 sites) under a TIM + I + G model of molecular evolution. Bootstrap support values are displayed on the nodes for concatenated ML and SVD Quartet analyses.

*Cephaloptera* Griffith & Smith, 1834: 617 (erroneous spelling for *Cephaloptera* Cuvier, 1816)

*Ceratoptera* Müller & Henle, 1837: 118 (type species *Cephaloptera giorna* Lesueur, 1824; by subsequent monotypy)

*Brachioptilon* Hamilton in Newman, 1849: 2358 (type species *Brachioptilon hamiltoni* Hamilton, 1849; by monotypy)

*Diabolicthys* Holmes, 1856: 45 (type species *Diabolicthys elliotti* Holmes, 1856; by monotypy)

*Deratoptera* Krefft, 1868: 3, 9, Fig. (considered a misspelling of *Ceratoptera* Müller & Henle, 1837)

*Ceratobatis* Boulenger, 1897: 227 (type species *Ceratobatis robertsii* Boulenger, 1897; by monotypy)

*Pterocephalus* Swainson, 1838: 170, 174 (type species *R. giorna* Lacepède, 1803; replacement name)

*Ptercephala* Swainson, 1839: 321 (alternative spelling of *Pterocephalus* Swainson, 1838)

*Daemomanta* Whitley, 1932: 327 (type species *Ceratoptera alfredi* Krefft, 1868; by original designation)

*Indomanta* Whitley, 1936: 11 (type species *Indomanta tombazii* Whitley, 1936; by monotypy)

**Definition:** (Adapted from Bigelow & Schroeder, 1953). Medium to very large rays with a rhomboidal disc, much wider than long, depressed and relatively thick. Head broad, dorsally flattened, protruding forward anteriorly of eye level; prominent cephalic lobes extending forward on each side of head, widely separated, curving forward from front of head; eyes positioned laterally on head; spiracles subcircular to slit-like, located either dorsal or ventral to plane of pectoral disc; mouth very broad, nearly straight, located either terminally or subterminally on head; numerous minute teeth present in tooth bands in either both jaws, or only in the lower jaw. Tail long to relatively short, whip-like, usually less than width of disc; small dorsal fin present opposite pelvic-fin bases; a small, serrated stinging spine sometimes present. Skin either naked or rough with numerous small denticles. Gill arches with numerous gill plates (50 to at least 140); gill plates



thin, membranous or somewhat horny with cartilaginous basal supports; outer edge of gill plates with lateral lobes that are either rounded and separated from those on adjacent plates, or rod-like and fused to those on adjacent plates.

*Nomenclatural discussion:* In addition to the generic synonyms listed above, [Lacepède \(1798\)](#) named the genus *Aodon* for *Squalus massasa*, *Squalus kumal* and *Aodon cornu* for species lacking teeth. *Squalus massasa* and *S. kumal* were named by [Forsskål \(1775\)](#) from the Red Sea, but no adequate description is available to allow for species determination. *Squalus massasa* is considered a problematic species that was described as having long pectoral fins but no teeth. *Aodon cornu* was an unneeded new name for *Squalus edentulus* Brännich, 1768, which equals *M. mobular* (Bonnaterre, 1788). *Aodon* has therefore been used for a *Mobula* species, predating *Mobula* Rafinesque, 1810; however, the type species for this genus was subsequently designated by [Jordan & Evermann \(1896\)](#) as *S. massasa*.

*Remarks:* Separation of the genera *Manta* and *Mobula* has long been upheld due to the striking feature of a terminal versus a subterminal mouth, respectively. However, the comprehensive genetic analyses undertaken in this study provide the strongest evidence to date that separation of these genera is not warranted. The species previously designated to *Manta*, *M. alfredi* and *M. birostris* are clearly nested within *Mobula*, forming a close relationship with *M. mobular* and perhaps *M. tarapacana*, based on independent analyses of both mitochondrial genomes ([Fig. 1](#)) and more than 1000 nuclear exons ([Fig. 2](#)). Although a terminal versus subterminal mouth is a strong character, the dorsal versus ventral position of the spiracle in mobulids is another significant character. Both *M. alfredi* and *M. birostris* have slit-like spiracles located dorsal to the plane of the pectoral fins similar to those of *M. mobular* and *M. tarapacana*, and different to the subcircular spiracles located ventral to the plane of the pectoral fins in the remaining smaller *Mobula* species. This morphological character, therefore, largely supports the finding based on analysis of the mitochondrial genomes that *M. birostris* and *M. alfredi* form a clade with *M. mobular* and *M. tarapacana*, to the exclusion of the smaller mobulid species ([Fig. 1](#)). Both *M. alfredi* and *M. birostris* are also inferred as sister to *M. mobular* based on the independent analysis of nuclear exon data ([Fig. 2](#)), providing further support that the genus *Manta* is invalid. It should be noted, however, that a slightly different topology that places *M. tarapacana* basal to all other mobulid species is consistently resolved by the nuclear analysis with strong support ([Fig. 2](#)). This highlights the importance of integrated approaches to resolving taxonomy and

inferring phylogeny, using both molecular and morphological approaches in combination.

#### *MOBULA HYPOSTOMA* (BANCROFT, 1831)

*Cephalopterus hypostomus* Bancroft, 1831: 134 (Jamaica; holotype not preserved)

*Cephaloptera olfersii* Müller, 1836: 311 (Brazil; syntypes MNHN A-9966, ?ZMB 31636 [ex ZMB 8923], ?ZM 31637)

*Cephaloptera massenoidea* Hill, 1862: 176 (Jamaica; no types known)

*Cephaloptera rochebrunei* Vaillant, 1879: 187 (Senegal; MNHN A-9967)

*Ceratobatis robertsii* Boulenger, 1897: 227 (Jamaica; holotype BMNH 1897.7.1.40)

*Common name:* Atlantic devilray

*Nomenclatural discussion:* Bancroft (1831) designated a new species name, *C. hypostomus*, to a devilray specimen from Jamaica. He only distinguished this new species from his *C. manta* Bancroft, 1829 (= *Mobula birostris*) in the form of the anterior margin of pectoral fins, a ventrally positioned mouth, and a rounded spiracle located on ventral plane and not dorsal plane of disc. Although the specimen is mentioned to have been included in the collection, there is no mention of the type being preserved. No neotype was designated by [Notarbartolo di Sciara \(1987\)](#) as there was no species identification issues with this species in the western Atlantic.

In 1836, Müller designated the name *C. olfersii* for a Brazilian species based on a skeleton and head (ZMB syntypes) and a dry specimen (MNHN specimen). This has been considered a junior synonym of *M. hypostoma* ([Bigelow & Schroeder, 1953](#); [Notarbartolo di Sciara, 1987](#)). Two other new combinations were designated for Jamaican material in subsequent decades, that is, *C. massenoidea* Hill, 1862 and *C. robertsii* Boulenger, 1897, with both being junior synonyms of *M. hypostoma*.

[Vaillant \(1879\)](#) described *C. rochebrunei* from a single specimen from Senegal in the Eastern Atlantic ([Fig. 3](#)). [Bigelow & Schroeder \(1953\)](#) considered this species a synonym of *M. hypostoma* and included Senegal in the range of this species. In contrast, [Krefft & Stehmann \(1973\)](#) listed it as a synonym of *M. mobular*. [Notarbartolo di Sciara \(1987\)](#) concluded that *M. rochebrunei* was distinct from *M. hypostoma* based on newly acquired morphometric data for several characters, for example, distance between first gill slits and predorsal length, dentition (tooth crown crenulated on labial edge vs. smooth).

*Remarks:* This study provides a substantial amount of molecular data allowing a direct comparison of *M. rochebrunei* to *M. hypostoma*. Analysis of the mitochondrial genome data shows an extremely close





**Figure 3.** Dorsal view of the dry, stuffed holotype of *Mobula rochebrunei*: MNHN A9967, adult male 108.5 cm DW.

relationship between the holotype of *M. rochebrunei* and *M. hypostoma* (Fig. 1). The observed uncorrected *p*-distance between these taxa was the lowest of all pairwise comparisons within Mobulidae, and likely within the realm of representing intraspecific variation. Thus, based on these results, we conclude that *M. rochebrunei* is a junior synonym of *M. hypostoma*, with the latter species confirmed as occurring in both the Western and Eastern Atlantic. The morphometric and dentition differences highlighted by Notarbartolo di Sciara (1987) were based on low sample sizes. The differences seen in several characters most likely represent intraspecific variation. A more detailed taxonomic review of the Eastern versus Western Atlantic *M. hypostoma* populations is required to elucidate whether there are population-level differences, or whether those differences simply reflect the low sample size available.

*MOBULA KUHLLII* (MÜLLER & HENLE, 1841)

*Cephaloptera kuhllii* Müller & Henle, 1841: 185, Pl. 59 (left) (India; lectotype MNHN 000-1596)

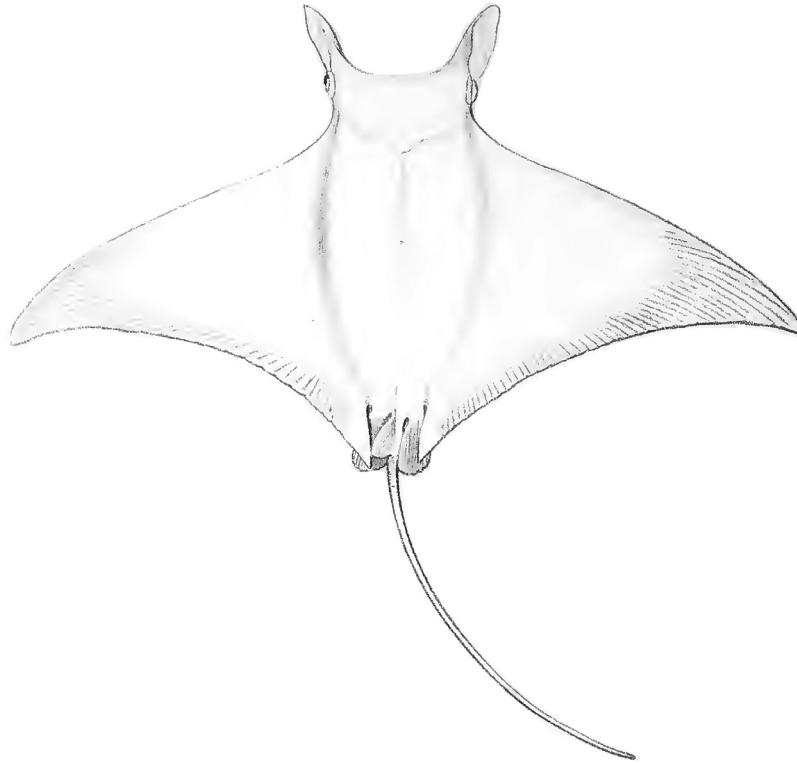
*Dicerobatis eregoodoo* Cantor, 1849: 1420 (Penang, Malaysia and Coromandel, India; syntype location unknown)

*Dicerobatis draco* Günther, 1872: 422 (Misol, Indonesia; syntypes BMNH 1870.8.31.68–69)

*Common name:* Pygmy devilray

*Nomenclatural discussion:* The description of *M. kuhllii* by Müller & Henle (1841) does not provide

adequate information to determine the identity of this *Mobula* species (Fig. 4), but examination of the lectotype (Fig. 5) and paralectotype enables it to be clearly distinguished from *M. japanica*, *M. tarapacana* and *M. thurstoni*. *Mobula eregoodootenkee* has a very complicated nomenclatural history, which is still largely unresolved. Russell (1803) provided a basic illustration and limited description of a small mobulid caught off south-eastern India, locally known as ‘*Eregoodoo tenkee*’ (Fig. 6). Although the description of the 4 ft. 5 in. (~135 cm) DW specimen was brief, it did include the following diagnostic characters: no spine on tail, spiracles absent behind the eyes (suggesting that they were ventral to plane of disc in the specimen examined), narrow strip of granular teeth in each jaw, and mouth behind front of head (not terminal; see Fig. 6). These characters, together with the capture location of India, indicate that the species Russell examined was one of the small Indo-West Pacific species with spiracles below the plane of pectoral disc, that is, *M. eregoodootenkee*, *M. kuhllii* or *M. thurstoni*. However, Russell did not designate a type and did not name it binomially; thus, as with other species described in the same publication, Russell’s ‘*Eregoodoo tenkee*’ is not an available name. In Cuvier (1829), ‘*Eregoodoo-tenkee*, Russ., I, 9’ is listed in a footnote on page 402 and some authors considered him to be the authority for this species, as *Cephaloptera eregoodoo-tenkee* Cuvier, 1829 (Notarbartolo di Sciara, 1987). However, Cuvier (1829) did not allocate this species to *Cephaloptera*; so, this combination is not valid. Also, when compared to the style used elsewhere in Cuvier (1829), it



**Figure 4.** Original illustration of *Cephaloptera kuhlii* in Müller & Henle (1841).



**Figure 5.** Dorsal view of the alcohol-preserved lectotype of *Mobula kuhlii* (MNHN 000-1596, juvenile male 71.7 cm DW).

appears to be presented in the vernacular and thus not an available binomial name.

The authority for this species has most recently been considered to be Bleeker (1859) with this authority considered the first proper binomial name attributed to this species. Bleeker lists this species as: ‘*Cephaloptera eregoodoo tenkee* Cuv. = *Eregoodoo tenkee* = Russ.,

fig. 9, 10 = *Cephaloptera Olfeisii* J. Mull. = Indian *Cephaloptera* J. E. Gray = *Dicerobatis eregoodoo* Cant., Cat. Mal. Fish. p. 438’. From this information, it is clear that Bleeker is referring to Cuvier’s use of Russell’s ‘*Eregoodoo tenkee*’. No descriptive features are provided and thus the identity of this species is still not determinable. Two other binomial names are also



**Figure 6.** Original illustration (ventral view) of *Eregoodoo tenkee* in Russell (1803); presented only as a vernacular name thus not an available name.

presented in Bleeker (1859). The first, *Cephaloptera Olfeisii*, equals *C. olfeisii* Müller, 1836, which is a junior synonym of *M. hypostoma* (Bancroft, 1831) occurring in the Western Atlantic. Müller & Henle (1841) included Russell's *Eregoodoo Tenke* in the synonymy of *C. olfeisii* although the only distribution provided was Brazil. The second is *D. eregoodoo* Cantor, 1849, which is presented as a new name combination for Cuvier's species, that is, *D. eregoodoo* (Cuvier), from Coromandel in India and Penang in Malaysia. Cantor provided a detailed description of this species, including morphometrics, based on a young male specimen (~78 cm DW) from Penang on the west coast of peninsular Malaysia. In this description, Cantor states that it agrees with Russell's '*Eregoodoo Tenke*, No. IX. R, (not No. IX, N, from St. Helena)' in several characters, but clearly states that the only individual examined is the Penang specimen. Unfortunately, the whereabouts of the syntype(s?) is unknown. Although most of the descriptive characters are generic for most *Mobula* species, several key features are provided. For example, the location of the spiracles beneath the origin of the pectoral fins discounts the two large Indo-Pacific species, *M. japanica* (Müller & Henle, 1841) and *M. tarapacana* (Philippi, 1892), which have the spiracles

located above the pectoral-fin origins. Also, the teeth are described as being twice as wide as long, which is similar to that described and illustrated for this species in Notarbartolo di Sciara (1987). In contrast, *M. thurstoni* (Lloyd, 1908) was found to have longer teeth, not twice as wide as long. Thus, of the currently known Indo-Pacific species, *M. kuhlii* (Müller & Henle, 1841) and *M. eregoodootenkee* (*sensu* Notarbartolo di Sciara, 1987) are the only options left for Cantor's *D. eregoodoo*. Notarbartolo di Sciara (1987) considered *D. eregoodoo* Cantor, 1849, to most likely be *M. thurstoni* due to the white spot on the apex of the dorsal fin, but this character has been found to be variable in at least one species, that is, *M. kuhlii*. If considered a valid species, *Mobula eregoodoo* (Cantor, 1849) would be the correct name for this taxon, not *M. eregoodootenkee* (Cuvier, 1829) or *M. eregoodootenkee* (Bleeker, 1859). The latter two combinations should be considered *nomen dubium* since they provide no characters to distinguish which taxon they denote.

The distinction between *M. kuhlii* and *M. eregoodootenkee* (*sensu* Notarbartolo di Sciara, 1987) has previously been based almost entirely on the length of the cephalic lobes, with the latter species having very long cephalic lobes (> 16% DW) versus relatively

short in *M. kuhlii* (< 15% DW). The neotype of *M. eregoodootenkee* designated by Notarbartolo di Sciara (CAS 56095) illustrates this feature well (fig. 11 in Notarbartolo di Sciara (1987). Notarbartolo di Sciara *et al.* (2016) provides a detailed redescription of *M. kuhlii*, with only some limited remarks on how it differs from *M. eregoodootenke*. The key to species provided in that paper lists the following characters as separating these two species: ventral pectoral fin coloration, length of cephalic lobes, dorsal fin tip coloration and branchial filter plates. It is puzzling though that the genetic results presented in Henderson *et al.* (2016), which failed to detect any differences in structure of the *NADH2* marker between these two species, are not referred to in this paper despite being from the same region. Thus, it seems that Notarbartolo di Sciara *et al.* (2016) did not consider available information regarding the lack of genetic differentiation between *M. kuhlii* and *M. eregoodootenke* from Oman.

*Remarks:* *Mobula kuhlii* and *M. eregoodootenkee* have previously been considered distinct, based primarily on the length of the cephalic lobes. It is proposed herein that the relative length of the cephalic lobes is a variable, intraspecific character, based on individuals possessing very long cephalic lobes being sampled together with those with very short lobes at the same location, for example, off Oman. The reported maximum size for the two species is similar (~100 vs. 119 cm DW). One character that has caused some confusion in these species is the presence or absence of a white tip or extent of a whitish hue on the dorsal fin. *Mobula eregoodootenkee* is reported to have either a plain dorsal fin (or with a whitish hue), while *M. kuhlii* has been reported as both with and without a white spot on the dorsal fin apex (Notarbartolo di Sciara *et al.* 2016). However, this character is variable. For example, two pregnant female *M. kuhlii* reported from Indonesia had plain greyish dorsal fins, but they each contained a single, late term embryo that had a distinct white spot on the apex of the dorsal fin. Notarbartolo di Sciara (1987) found that *M. kuhlii* and *M. eregoodootenke* shared the following characters which are diagnostic for mobulid species: no caudal spine, base of tail quadrangular in cross-section, spiracles subcircular and located ventral to plane of pectoral fins, tooth bands about three-quarters of mouth width, teeth wider than long and anterior margin of pectoral fin straight. Although some differences were noted in the tooth morphology, this was based on an adult male *M. eregoodootenkee* and juvenile males of *M. kuhlii*.

In a number of specimens of devilrays identified as *M. eregoodootenkee*, the pectoral fins have a blackish anterior margin with a broader blackish marking on central anterior margin (Fig. 7a). In contrast, most short-headed forms of *M. kuhlii* that were examined lacked these, but instead the distal portion of the

ventral pectoral fins was dusky (Fig. 7b), versus white in the above specimens (Fig. 7a). This character was also reported by Notarbartolo di Sciara *et al.* (2016) as one of the key characters to distinguish between *M. kuhlii* and *M. eregoodootenkee*. Since coloration can be highly variable in a number of myliobatoid rays, for example, melanistic forms of *M. birostris* and *M. alfredi*, further investigation into the validity of this character is needed with examination of a larger number of specimens. As with the length of the cephalic lobes, we consider this difference to be related to intraspecific variation and not an interspecific character. Paig-Tran *et al.* (2013) found that the branchial filter plates differed between *M. eregoodootenkee* and *M. kuhlii* with the terminal lobe being far more elongate in *M. eregoodootenkee*. This character was not confirmed with the specimens examined in this study. It should be noted that only a single specimen was available for both species in the Paig-Tran *et al.* (2013) study, thus intraspecific variation could not be taken into account. Notarbartolo di Sciara *et al.* (2016) stated that the terminal lobes on the filter plates of *M. kuhlii* were leaf-shaped to spade-shaped, but it was not stated how many specimens were dissected to view this character. No additional information on the filter plates of *M. eregoodootenkee* was provided. Therefore, as with the other characters that have previously been used to separate these species, it is poorly understood how these characters vary within species.

The genetic analyses undertaken in this study show that specimens identified morphologically as *M. kuhlii* and *M. eregoodootenkee* are consistently very closely related based on analyses of both mitochondrial genomes and nuclear exon data (Figs 1, 2). The observed divergence between these taxa was within the range of intraspecific divergences observed for other mobulid lineages based on our expanded taxon sampling of mitochondrial *NADH2* data (Supporting Information Fig. S1), an order of magnitude lower based on the mitochondrial genome data and among the lowest pairwise divergences observed for the nuclear exon data. Strengthening this argument is the presence of both long-head and short-head forms from Oman, which are indistinguishable based on sequencing of the mitochondrial *NADH2* locus (Supporting Information Fig. S1; Henderson *et al.*, 2016). In this paper, long-head forms are referred to as *M. eregoodootenkee* (GN9431, GN9437 and GN9438) and short-head forms are referred to as *M. kuhlii* (GN9426-30, GN9432, GN9678-80, GN9726, GN9729, GN9737-38 and GN9747). Thus, although there is some morphological evidence to support *M. eregoodootenkee* distinct from *M. kuhlii*, the combined morphological and detailed molecular data presented herein lead us to conclude that *M. eregoodootenke* is a junior synonym of *M. kuhlii*.





**Figure 7.** Ventral coloration of: (A) long-head form of *Mobula kuhlii* (originally identified as *Mobula eregoodootenkee*), adult male from Muttrah in Oman; (B) short-head form of *Mobula kuhlii*, female from Muttrah in Oman.

*MOBULA MOBULAR* (BONNATERRE, 1788)

- Squalus edentulus* Brünnich, 1768: 6 (Marseille, France)  
*Raia mobular* Bonnaterre, 1788: 5 (Marseille, France)  
*Raja vespertilio* Walbaum, 1792: 535 (Azores, north-eastern Atlantic)  
*Aodon cornu* Lacepède, 1798 (unnecessary new name for *S. edentulus* Brünnich, 1768)  
*Raia aurita* Suckow, 1799: 78  
*Raja fabroniana* Lacepède, 1800: 104, 111, pl. 5 (figs 1, 2) (Livourne, Italy; holotype MZUF probably lost)

- Raja cephaloptera* Bloch & Schneider, 1801: 365 (no locality; holotype ZMB 13407, skull)  
*Raja giorna* Lacepède, 1803: 662, 666, pl. 20 (fig. 3) (Bay of Nice, France)  
*Raja diabolus* Shaw, 1804: 291 (Mediterranean, Atlantic and Indian seas)  
*Mobula auriculata* Rafinesque, 1810: 48, 61  
*Apterurus fabroni* Rafinesque, 1810: 48 (unjustified emendation of *Raja fabroniana* Lacepède, 1800)  
*Cephalopterus massena* Risso, 1810: 15 (Nice, France)

?*Raja cornuta* Lesueur, 1824: 120 (based on Azores records, not from US Atlantic coast)

*Cephaloptera japonica* Müller & Henle, 1841: 185 (Nagasaki, Japan; lectotype RMNH D 2440; paralectotype RMNH, lost)

*Cephaloptera edentula* Griffini, 1903: 132, fig. 73 (Italian seas)

*Mobula rancureli* Cadenat, 1959: 1331, figs 1–10 (Ivory Coast; holotype MNHN 1965-0146)

*Common name:* Giant devilray.

*Nomenclatural discussion:* In order to understand the complicated taxonomic history of *M. mobular*, it is necessary to go back to the original record upon which several authors based their descriptions. [Duhamel du Monceau \(1780\)](#) provided illustrations and a description of a specimen caught in 1723 near Marseille in southern France (Mediterranean Sea). The description includes some basic morphometrics, including length from head to tail (6 ft. = ~183 cm), mouth width (15 in. = 38 cm), each wing (6 ft. = ~183 cm) and tail (4.5 ft. = ~137 cm). The dorsal and ventral illustrations provided by Duhamel du Monceau show a subterminal mouth clearly indicating a *Mobula*, but strangely the ventral surface depicts six gill slits on each side. In Duhamel du Monceau's account, reference is made to the Azores where it is referred to as Raie cornue (= horned ray) and the Caribbean where it is referred to as Mobular, and some that refer to it as Squatina. In the addition section of [Duhamel du Monceau \(1780, 330\)](#), reference is made to [Gentil's \(1779\)](#) records of Diable de mer from the Indian Ocean which he alludes to being the same as his species. Gentil's illustration of Diable de mer, although somewhat cartoonish, agrees with the overall shape of a mobulid, but not enough key features are apparent to determine the species. Duhamel du Monceau's Raie cornue is not considered an available name as it was used in the vernacular in reference to the horned rays of the Azores.

*Raja mobular* was proposed by [Bonnaterre \(1788\)](#) for [Duhamel du Monceau's \(1780\)](#) Marseille record, with the measurements provided taken from that publication. In the same year, [Schneider](#) provided a detailed account of Duhamel du Monceau's description of the Marseille specimen, the Azores Raie cornue, and noting Gentil's record of Diable de Mer from the Indian Ocean. In this publication, [Schneider \(1788: 82, 83\)](#) proposes the name *Raja vespertilio* for this species in allusion to its bat-like appearance. [Walbaum \(1792\)](#) listed *Raja vespertilio* as a questionable species.

[Shaw \(1804\)](#) described *R. diabolus* based on literature sources. The primary literature source was the account of [Duhamel du Monceau \(1780\)](#), based on the same specimen used for the *R. mobular* description by [Bonnaterre \(1788\)](#). The specimen was stated as being

10.5 ft. long (~320 cm) which matches the measurements provided for *R. mobular*, that is, tail length 4.5 ft. and body length 6 ft. Shaw included Russell's '*Eeregoodee Tenkoo*' in the synonymy and stated that it occurs in the Mediterranean, Atlantic and Indian seas, but mainly observed around the Azores. The distribution provided is likely based on Russell's Indian species (Indian seas), the Marseilles specimen described by Duhamel du Monceau (Mediterranean) and the Azores records (Atlantic). Based on the Mediterranean location and the large size of the Marseilles specimen, [Notarbartolo di Sciara \(1987\)](#) included it in the synonymy of *M. mobular* (Bonnaterre, 1788). Since the descriptive characters used in this description are based on the same specimen used to describe *M. mobular*, *R. diabolus* must be considered a junior synonym of this species. Interestingly, Shaw's description states that the tail is unarmed, whereas *M. mobular* possesses a distinct caudal spine. Another uncertainty is the coloration which is stated by Shaw as being cinereous brown above, whereas *M. mobular* is typically bluish black above. It is possible that the caudal spine was removed or missing from the Marseilles specimen or simply that Duhamel du Monceau did not include that feature in his description.

[Klunzinger \(1871\)](#) described *Dicerobatis monstrum* based on a 54 cm embryo that came from a 2 m female specimen stranded at Al-Qusair, Egypt, in the Red Sea. The holotype was listed as not found and probably lost by [Fricke \(1992\)](#). [Dor \(1984\)](#) considered this species a junior synonym of *M. diabolus*. The description includes reference to the spiracles being located behind the eyes on the back (i.e. not beneath the pectoral-fin origin) and the dorsal colour being blue black. These characters are adequate to confirm the identity of this species as *M. mobular*.

In 1841, [Müller & Henle](#) described a new species, *Cephaloptera japonica*, based on two specimens collected off Nagasaki in Japan. The brief description provides mostly generic-level features, but examination of the dried lectotype ([Fig. 8](#)) revealed the following key diagnostic features: white-tipped dorsal fin, serrated caudal spine behind dorsal fin, spiracles located above pectoral-fin origin, pectoral fins not strongly falcate and their anterior margins nearly straight (not concave). *Mobula japonica* is currently recognized as a wide-ranging, almost circumtropical species which is reported to attain at least 310 cm DW. In a revision of the genus, [Notarbartolo di Sciara's \(1987\)](#) states that *M. japonica* does not differ substantially in any characters from *M. mobular* from the Mediterranean. The only character found to differ was the morphology of the *rete mirabile cranica* and possibly in tooth morphology, but this was based on limited data. Although retaining them as separate species, Notarbartolo di Sciara states that this is only due to lack of direct



**Figure 8.** Dorsal view of the dried lectotype of *Mobula japonica* (RMNH D2440, juvenile male ~65 cm DW).

examination of a sufficient number specimens. This study provides new information to support the synonymization of these two species, with precedence given to *M. mobular* (Bonnaterre, 1788) and *Mobula japonica* a junior synonym.

Cadenat (1959) described *Mobula rancureli* based on a single 2.4 m DW individual from off the Ivory Coast. Although considered a synonym of *M. japonica* by Notarbartolo di Sciara (1987), McEachran & Séret (1990) considered it to be a valid species. Cadenat (1959) distinguished this species from *M. mobular* based on the number of teeth and denticle morphology. Given this is only based on one specimen and these characters can vary greatly intraspecifically, this species should be considered a synonym of *M. mobular*.

A number of other names have been considered junior synonyms of *M. mobular*:

- *Squalus edentulus* was described by Brünnich (1768). The brief Latin description includes ‘*Squalus capite lato, plano, maxillis osseis edentulis, superiore longiore, lateribus capitis prominentibus*’ which roughly translates to ‘*Squalus* with a wide head, flat, toothless bony jaws, the long sides of the head are prominent’. It was based on a specimen from Marseille which had head width equal to 3 ‘span’ (~68 cm based on a span equalling 9 in.), thus was referring to a large species. There is also reference to the upper jaw being file-like (rough surface) which possibly indicates that teeth are present which would rule out *M. alfredi* and *M. birostris*, which lack teeth in the upper jaw. Based on the location and size, this species is probably a synonym for *M. mobular*. Despite being an older name, *S. edentulus* has not been used as a valid name for this species and prevailing usage should be given to *M. mobular* (Bonnaterre, 1788).
- *Aodon cornu* Lacepède, 1798 is an unneeded new name for *S. edentulus* Brünnich, 1768.
- *Raia aurita* Suckow, 1799 appears to be based on Duhamel du Monceau’s specimen, as the latter record is included in the synonymy and the briefly described specimen is of the same proportions as the Marseille specimen (i.e. each wing 6 ft. wide). Bonnaterre’s *Mobular* is also listed in the synonymy together with *R. vespertilio*. This name should be considered synonymous with *M. mobular* as it is evident that it is based on the same literature sources as previous names and thus is an unneeded replacement name for *M. mobular* Bonnaterre, 1788.
- *Raja cephaloptera* Bloch & Schneider, 1801, also refers to the Duhamel du Monceau specimen from Marseille and provides a type (only the forepart of the skull) which is from Schneider in Leipzig also. This species was stated to occur mostly in the Pacific.
- *Raja fabroniana* was described and illustrated by Lacepède (1800) from off Livorno, Italy. The illustration clearly depicts a large *Mobula* with a



subterminal mouth and the large size (~4 m DW) and Mediterranean location confirm it as a junior synonym of *M. mobular*.

- *Raja giorna* was described by Lacepède (1803) from the Bay of Nice in southern France. The illustration provided for this species includes a serrated caudal spine, thus confirming it as a junior synonym of *M. mobular*.
- *Cephalopterus massena* was described by Risso (1810) from off Nice in southern France based on a large specimen, but with no types designated and no illustration provided. The large size and Mediterranean location strongly suggest this to be a junior synonym of *M. mobular*.
- *Apterurus fabroni* Rafinesque, 1810 is an unjustified emendation of *Raja fabroniana* Lacepède, 1800.
- *Mobula auriculata* Rafinesque, 1810 is based on *Raja mobula* of Lacepède according to Eschmeyer (2015).
- *Raia cornuta* is considered a new name combination in Lesueur (1824), in his account of *Cephaloptera giorna* from off the Atlantic US coast, in reference to the Azores species. It does not appear that Lesueur intended to provide a new name combination and given it is based on the Azores species, it is possibly a synonym of *M. mobular*. However, it should be noted that the species referred to by Lesueur as *C. giorna* from the US coast is considered a synonym of *Mobula* sp. cf. *birostris* (Marshall *et al.*, 2009). It is most likely that Lesueur was referring to Duhamel du Monceau's Raie cornue, upon which a number of the synonyms of *M. mobular* were based.
- *Cephalopterus edentula* Griffini, 1903, was a new name combination for Brünnich's *Squalus edentulus*, thus is also a junior synonym of *M. mobular*.

**Remarks:** *Mobula mobular* and *Mobula japanica* were previously considered distinct species. In Notarbartolo di Sciara's detailed 1987 revision of the genus, he stated that the two species are very similar and possibly conspecific, but retained them as separate species pending more information. Due to the large size of these species, obtaining accurate material for comparison is relatively difficult. However, recently acquired molecular information has provided critical new information. These two taxa are very closely related based on the analyses of both mitochondrial genomes and nuclear exons (*p*-distance = 0.002 and 0.005 for mitogenome and nuclear datasets, respectively, Figs 1, 2). Moreover, the expanded sampling of *NADH2* data for these taxa revealed genetic distances that were consistently within the range of intraspecific divergences that were observed for taxa with uncontested specific status. *Mobula mobular* is considered to be a larger species with a maximum width of 520 cm, but mostly

smaller (Ebert & Stehmann, 2013) while *M. japanica* is reported to attain only 310 cm DW. However, this variation in maximum size is not an adequate specific character and likely reflects the variability in maximum size in large members of this family, as evidenced by *M. birostris* (Walbaum, 1792) which has been reported to be as large as 910 cm DW, but is rarely found over 600 cm DW (Marshall *et al.*, 2009).

The only characters provided by Notarbartolo di Sciara (1987) to distinguish these two species were the morphology of the *rete mirabile cranica* and the teeth, but these were based only on a single specimen. Teeth can vary greatly in morphology within a species depending on size and sex. The teeth of *M. japanica* examined by Notarbartolo di Sciara (1987) were from two adult specimens, while examination of the teeth of *M. mobular* was based on a single juvenile specimen. Based on the lack of any substantial distinguishing features to separate these two species and the genetic results available, these two species are herein considered conspecific, with *M. mobular* (Bonnaterre, 1788) given precedence.

#### OTHER AVAILABLE MOBULID NAMES

The following available binomial names for the Mobulidae cannot be accurately assigned to recognized species based on the limited descriptive data available in the original descriptions:

- *Raja monstrosa* Walbaum, 1792 was listed as a questionable species by Walbaum (1792) without location. The characters provided do not allow its identity to be determined and thus should be considered *nomen dubium*.
- *Raja banksiana* Lacepède, 1800 was described from an illustration of a specimen observed in the East Indies (Indonesia?). The illustration is somewhat cartoonish, with the cephalic lobes both with long filaments, eyes located dorsally, no dorsal fin and elongate markings on the dorsal surface. But Lacepède noted that the illustration of this species was drawn from a specimen swimming, and thus the cephalic filaments are likely the result of distortion through the sea surface. As a result, the identity of the mobulid species drawn cannot be accurately determined and should be considered *nomen dubium*.
- *Raja barbata* was briefly described by Bloch & Schneider (1801) from the African sea, but the characters provided do not allow for accurate identification of the species and thus should be considered *nomen dubium*.
- *Ceratoptera lesueurii* was designated in Swainson (1839), as a footnote in a brief description of the genus *Ceratoptera* Müller & Henle, 1837. The



illustration of the head clearly depicts a *Manta* species, but it is not possible to determine which species and thus should be considered *nomen dubium*.

## DISCUSSION

The analyses of the mitochondrial genome and nuclear exon data produced topologically similar results. The overall cladistic structure is also topologically similar to previous inferences of mobulid phylogeny based on morphology (Adnet *et al.*, 2012; Paig-Tran *et al.*, 2013) and molecular data (Aschliman, 2011; Naylor *et al.*, 2012b; Poortvliet *et al.*, 2015), with the exception of the novel placement of *M. tarapacana* (discussed below).

Based on our analyses, *Mobula alfredi* and *M. birostris*, previously placed in the genus *Manta*, are nested within the other *Mobula* species and sister to *M. mobular*. That the genus *Mobula* is rendered paraphyletic by the inclusion of *Manta* has been suggested many times previously in the literature, based on both morphological (Herman *et al.*, 2000; Adnet *et al.*, 2012; Paig-Tran *et al.*, 2013) and molecular (Aschliman, 2011, 2014; Naylor *et al.*, 2012b; Poortvliet *et al.*, 2015) inference. In contrast to the comparatively sparse genomic samplings of nuclear data that have been considered previously for this group (Aschliman 2014; Poortvliet *et al.*, 2015), our nuclear phylogeny is based on hundreds of independent nuclear orthologs and is fully resolved. Importantly, we are thus able to demonstrate, for the first time, that this relationship holds true based on inferences from the nuclear genome and is therefore unlikely to be the consequence of inadequate genomic sampling, mitochondrial introgression or lineage sorting issues. The inferred topology suggests that the terminal mouth that is present in *M. birostris* and *M. alfredi* is a derived character within *Mobula*.

It should be noted that, of all our pairwise species comparisons, the comparison between *M. birostris* and *M. alfredi* was consistently among the most shallow of observed divergences. The observed genetic distance between this pair was, at times, lower than that observed between other species pairs which we have synonymized here. However, unlike these other cases, the taxonomy of *M. birostris* and *M. alfredi* has recently been revised based on morphological and meristic data (excepting the genus name change that we detail here). Moreover, a phylogeographic study has provided evidence that these species diverged relatively recently and have experienced post-divergence gene flow. It is thus already documented that these species are indistinguishable based on mitochondrial DNA (Kashiwagi *et al.*, 2012), consistent with our own results. Although morphology was used to confirm the species identification of the specimens that we subjected to our nuclear gene capture protocols, and care was taken to select

individuals from regions where the two species do not co-occur, it is likely that recent divergence possibly combined with the inclusion of introgressed individuals in our analysis is driving the shallow divergence we observe between this species pair. Obviously, elucidating the pattern of hybridization between these species is beyond the scope of this paper and is being addressed elsewhere. This result however does not impact our conclusion that *Manta* is an invalid generic name.

*Mobula eregoodootenkee* has been synonymized with *M. kuhlii* and we suggest that the character that has been considered diagnostic in these species – the relative length of the cephalic lobes – is in fact a variable trait in this single species. It is acknowledged that it is possible that these species are discrete and that the close relationship observed in our genetic data is the consequence of hybridization between them, as is observed between *M. birostris* and *M. alfredi*. However, we make some important distinctions between this case and the former. Firstly, *M. kuhlii* is considered an uncommon species that is designated data deficient by the International Union for the Conservation of Nature Red List of Threatened Species. In particular, it is noted that the range of this species is poorly documented. However, the records that do exist show *M. kuhlii* to be partially overlapping the distribution of *M. eregoodootenkee*. Secondly, a review of the nomenclature indicates that both *M. eregoodootenkee* and *M. kuhlii* have a convoluted history of being mistaken for each other and other *Mobula* species, suggesting ambiguity in distinguishing them. While cephalic lobe length has been used to distinguish these species, insufficient comparative material has prevented a thorough examination of variation in this trait. Likewise, suggestions that other traits such as branchial filter plate morphology may also differ between these species, have been based on limited samples (Paig-Tran *et al.*, 2013) and thus cannot be considered diagnostic. Finally, molecular data have not previously been taken into consideration. Poortvliet *et al.* (2015) did not discuss the taxonomic implication of the close relationship they observed between *M. eregoodootenkee* and *M. kuhlii* based on their mitochondrial inference. Henderson *et al.* (2016) did note that *M. eregoodootenkee* and *M. kuhlii* sampled from southeast Arabia were genetically indistinguishable based on sequencing of the mitochondrial *NADH2* gene, which is demonstrated further by our own analyses. We now demonstrate that these taxa are virtually indistinguishable based on sequence data from a large number of nuclear and mitochondrial genes. In the case of *M. birostris* and *M. alfredi*, the taxonomy was well resolved (Marshall *et al.*, 2009) and a subsequent population-level molecular study revealed them to be introgressed for mitochondrial DNA (Kashiwagi *et al.*, 2012). In this case, we are dealing with complex

nomenclatural history that is based on potentially ambiguous morphological characters and now a large amount of molecular data suggest that these taxa are conspecific. While it is possible that a future large, population level, comparative study of both species based on molecular and morphological characters may reveal that they are distinct, potentially hybridizing species, the weight of the current evidence does not suggest this. We argue that obtaining access to such sample sizes is unlikely for these species and so their taxonomy should reflect the best available evidence, which is to synonymize these species, as we have done.

Several authors have noted previously that *M. mobular* and *M. japanica* may be conspecific based on morphological data (Notarbartolo di Sciara, 1987; Paig-Tran *et al.*, 2013). Poortvliet *et al.*, (2015) also noted a lack of significant differentiation between this species pair based on their sequencing of mitochondrial DNA, but elected to retain the current taxonomy in the interest of stability. In this paper, we have made the important addition of investigating this relationship using a large panel of nuclear molecular markers and have again come to the conclusion that these taxa appear to be conspecific. While we acknowledge that our sampling of *M. mobular* is limited, again we must argue that this is a pervasive problem for these animals that is unlikely to improve in the near future. In light of this, the taxonomy should reflect the best available evidence of the time. In the case of this species pair, a complex nomenclatural history is now combined with inferences from both morphology and molecular data to suggest conspecificity and we have thus revised the taxonomy to reflect this. It should also be noted here that the taxonomic baseline that exists for the Mobulidae has impacted our understanding of the group. That is, if *M. mobular* and *M. japanica* had been synonymized over a century ago, there would by no means be enough evidence available to separate the species today based on the information at hand. But since they have been considered as distinct species, far more evidence is required to clarify their validity. For a group such as mobulids, accessing large numbers of samples is very unlikely, thus it is important to have resolution based on the best available information. In this case, the evidence towards keeping these species separate is very weak, while the evidence to synonymize is quite strong.

Previous studies of the relationship between *M. rochebrunei* and *M. hypostoma* have been based on limited sampling, as is the case in our present genetic analysis. However, we feel that our analysis makes a substantial contribution to our understanding of this relationship that justifies the taxonomic changes that were made. Poortvliet *et al.* (2015) compared these taxa on the basis of a single mitochondrial gene. Here, we are able to extend genomic sampling to include inferences based on the protein coding components of whole

mitochondrial genomes, and again show that these taxa are indistinguishable. While more extensive sampling of both taxa would be ideal to investigate this relationship further, this is unrealistic in the case of the extremely rare *M. rochebrunei*. We also acknowledge that we were unable to obtain nuclear data for comparison in this instance, but such are the limitations of molecular technologies as applied to archival material, at this point in time. Even in light of our own limitations in sampling for this comparison, the holotype of *M. rochebrunei* has now been confirmed to be identical to *M. hypostoma* at the mitochondrial genome level. Given that it is highly unlikely that anyone will obtain a substantial number of samples from either taxon, and we are faced with the complexities of obtaining sufficient high-quality nuclear data from the holotype specimen of *M. rochebrunei*, we believe that this is compelling evidence that these samples are, in fact, conspecific with the newer *M. rochebrunei* becoming a junior synonym of *M. hypostoma*. If future additional sampling shows that there is indeed a distinct small species in the Eastern Atlantic, then this would constitute an as yet undescribed species. In the absence of additional material (samples and nuclear data), we feel that applying the precautionary principle would constitute acknowledging this lineage as a single species with the possibility of population structure across the Atlantic Ocean.

Morphological characters that map to the molecular phylogenetic inferences that we present are summarized in Table 1. Several synapomorphic traits link the *M. kuhlii*–*M. thurstoni* and *M. hypostoma*–*M. munkiana* clades relative to the *M. alfredi*–*M. birostris*–*M. mobular*–*M. tarapacana* clades. These are position of the spiracles relative to plane of the pectoral disc (ventral vs. dorsal), presence of denticles on dorsal body (sparse vs. dense) and maximum size (< 2 m vs. > 3 m). The trait which distinguishes *M. kuhlii* and *M. thurstoni* from *M. hypostoma* and *M. munkiana* is the width of the lower tooth band, that is, ≤ 60% of mouth width versus > 75% of mouth width.

Several characters that were previously considered important for understanding relationships among mobulid species, such as the absence of tooth bands in the lower jaw, position of the mouth on head and presence of a caudal sting, are herein considered to be plesiomorphic traits. They are thus not useful characters for determining relationships amongst species within the Mobulidae.

The variable position of *M. tarapacana* inferred from the analyses of the mitochondrial versus nuclear datasets is particularly interesting. *Mobula tarapacana* shares some traits with *M. alfredi*, *M. birostris* and *M. mobular*, such as the dense covering of denticles on dorsal body, dorsal position of spiracles relative to plane of disc and large maximum size (Table 1). These traits thus appear to support the inferences based on the mitochondrial genome data (Fig. 1) that

**Table 1.** Key morphological characters amongst the species of *Mobula*

	Spiracle position relative to plane of disc	Denticles on dorsal body	Maximum disc width	Width of lower tooth band (as % of mouth width)	Caudal sting	Presence of tooth bands	Mouth position on head	Branchial filter plates
<i>M. hypostoma</i>	ventral	sparse	1.2 m	~47%	absent	both jaws	subterminal	separate
<i>M. munkiana</i>	ventral	sparse	1.1 m	~60%	absent	both jaws	subterminal	separate
<i>M. kuhlii</i>	ventral	sparse	1.35 m	~78%	absent	both jaws	subterminal	separate
<i>M. thurstoni</i>	ventral	sparse	1.89 m	~76%	absent	both jaws	subterminal	separate
<i>M. alfredi</i>	dorsal	dense	5.5 m	up to 77%	absent	lower jaw only	terminal	separate?
<i>M. birostris</i>	dorsal	dense	7 m	up to 70%	encased in calcified mass	lower jaw only	terminal	separate?
<i>M. mobular</i>	dorsal	dense	5.2 m	~76%	present	both jaws	subterminal	separate
<i>M. tarapacana</i>	dorsal	dense	3.7 m	~70%	absent	both jaws	subterminal	fused together

place *M. tarapacana* sister to *M. alfredi*, *M. birostris* and *M. mobular*. Inferences based on the nuclear exon data place *M. tarapacana* basal to all other mobulids with strong bootstrap support (Fig. 2). On the one hand, mitochondrial DNA has a smaller effective population size than the nuclear genome and is thus expected to sort more rapidly. That being said, mitochondrial DNA is inherited as a single linked unit; thus, even analyses of whole mitochondrial genome data can only be considered a single locus and the possibility that this inference reflects gene tree–species tree discordance cannot be ruled out. It should be noted that the placement of *M. tarapacana* inferred from the mitochondrial DNA data has lower bootstrap support than other relationships in the tree (Fig. 1). Inferences resulting from both concatenated ML and coalescent-based analyses of the complete and clock-filtered datasets, which included data from 1082 and 614 nuclear exons, respectively, consistently resolved *M. tarapacana* as basal to all other mobulids with strong bootstrap support, thus providing compelling evidence for this relationship. *Mobula tarapacana* does possess several traits that make it a relatively unique species within the Mobulidae. Most importantly, the branchial filter plates are fused together in *M. tarapacana*, but are separate in other mobulid species. This species also possesses unique tooth morphology and both of these characters have been used to suggest that *M. tarapacana* is basal to other mobulids (Herman, 2000; Adnet *et al.* 2012; Paig Tran *et al.*, 2013). Other unique traits include a strong ridge on the midline of the body, very falcate pectoral fins, and a short tail that is rigid and rod-like. As mentioned previously, very few whole mobulid specimens that are in sufficiently good condition to enable more detailed morphological comparisons can be found in museum collections. This, together with the mito-nuclear discordance

in the placement of *M. tarapacana* presented in this study, suggests that more detailed anatomical studies of *M. tarapacana* in relation to the other mobulids are required. For example, preliminary investigation into the structure of the vertebrae beneath the first dorsal fin of several mobulid species in Indonesia revealed that *M. tarapacana* possessed extremely small vertebrae encased in a very large haemal arch compared to *M. mobular*, *M. kuhlii* and *M. thurstoni*. How this character and other skeletal characters differ between the other mobulid species may be important to better understand these relationships.

The extremely close relationship between *M. munkiana* and *M. hypostoma* that was revealed by analyses of the nuclear exon data was surprising. These analyses suggested that these two species were more closely related than are *M. eregoodootenkee* and *M. kuhlii*, *M. japonica* and *M. mobular*, and *M. alfredi* and *M. birostris*. The main character used to separate *M. munkiana* from *M. hypostoma* is the width of the lower tooth band (60% vs. 47%; Table 1). Thus, further taxonomic research focused on these two species is required to ascertain whether they are truly separate species, or whether the differences reflect population variation within a single more widely ranging species.

#### KEY TO THE GENUS *MOBULA*

1. Mouth terminal on head ..... 2
  - Mouth subterminal on ventral surface of head ..... 3
2. Calcified mass containing an embedded spine present behind dorsal fin; anterior margin of white shoulder patches running parallel with front of head; a large black, semicircular spot emanating from both of the fifth gill slits ..... *Mobula birostris*



- No calcified mass or spine present behind dorsal fin; anterior margin of white shoulder patches curving posteriorly and not parallel with front of head; a small black, semicircular spot emanating from both of the fifth gill slits ..... *Mobula alfredi*
3. Spiracles long, slit-like and dorsal to the plane of the pectoral fins; large species reaching well over 200 cm DW ..... 4  
 – Spiracles small, subcircular and ventral to the plane of the pectoral fins; small species, not reaching 200 cm DW and mostly less than 130 cm DW ..... 5
4. Pectoral fins strongly falcate; a strong bony ridge present along dorsal midline; no caudal spine present; disc greyish, dorsal fin plain; branchial filter plates on gill arches fused along their lateral margins ..... *Mobula tarapacana*  
 – Pectoral fins moderately falcate; bony ridge on dorsal midline weak; a serrated caudal spine usually present behind dorsal fin; disc blackish, dorsal fin with prominent white tip; branchial filter plates on gill arches separate (not fused) along their lateral margins ..... *Mobula mobular*
5. Tooth bands in each jaw less than 65% of mouth width ..... 6  
 – Tooth bands in each jaw more than 65% of mouth width ..... 7
6. Lower tooth band length about 60% of mouth width ..... *Mobula munkiana*  
 – Lower tooth band length about 47% of mouth width ..... *Mobula hypostoma*
7. Anterior margin of pectoral fins with a double curvature (hence common name of Bentfin Devilray); base of tail depressed; dorsal coloration bluish black; dorsal fin with a prominent white tip; attains about 190 cm DW ..... *Mobula thurstoni*  
 – Anterior margin of pectoral fins straight or slightly convex; base of tail quadrangular; dorsal coloration greyish brown; dorsal fin with or without a white tip; attains about 135 cm DW ..... *Mobula kuhlii*

## MATERIAL EXAMINED

*MOBULA ALFREDI* (KREFFT, 1868)

*Not retained, tissue sampled:* Tissue accessions GN15457, GN15458, GN15459 and GN15460, South Africa.

All specimens were nominally identified as *M. alfredi*.

*MOBULA BIROSTRIS* (WALBAUM, 1792)

CSIRO H 6446-02 (one clasper only), adult male 461.4 cm DW, Tanjung Luar landing site, Lombok,

Indonesia, 18 August 2005; CSIRO H 7791-01 (dorsal fin only), CSIRO H 7791-02 (dorsal fin only), Tanjung Luar landing site, Lombok, Indonesia, 5 October 2009; field code BRU-043, Philippines, 20 April 2007.

*Photographed (not retained):* male embryo 60.9 cm DW, Pelabuhanratu landing site, West Java, Indonesia; female 493 cm DW, Tanjung Luar landing site, Lombok, Indonesia, 25 March 2002; female 412.6 cm DW, Tanjung Luar landing site, Lombok, Indonesia, 25 April 2004; female 337.6 cm DW, Tanjung Luar landing site, Lombok, Indonesia, 26 April 2004; female 377.4 cm DW, Tanjung Luar landing site, Lombok, Indonesia, 13 July 2004; adult male 340.6 cm DW, Tanjung Luar landing site, Lombok, Indonesia, 9 March 2005; male 289.1 cm DW, Tanjung Luar landing site, Lombok, Indonesia, 11 March 2005; adult male 396 cm DW, Tanjung Luar landing site, Lombok, Indonesia, 13 July 2005; male 270 cm DW (tissue accession GN6791), Cilacap landing site, Central Java, Indonesia, 19 October 2008.

*Not retained, tissue sampled:* Tissue accessions GN10559, GN10560, GN10561, GN10568, Japan, 26 September 2012.

All specimens were nominally identified as *M. birostris*.

*MOBULA HYPOSTOMA* (BANCROFT, 1831)

BMNH 1897.7.1.40 (holotype of *Ceratobatis robertsii*), juvenile female 92 cm DW, Jamaica.

MNHN A9967 (dry, holotype of *C. rochebrunei*; tissue accession GN13192), adult male 108.5 cm DW, Senegal.

*Photographed (not retained):* Field code MS05-390 (tissue accession GN5813), female 73 cm DW, field code MS05-391 (tissue accession GN5814), female 74 cm DW, St Joes Bay, Gulf of Mexico, Florida, USA, 3 October 2006.

*MOBULA KUHLII* (MÜLLER & HENLE, 1841)

BMNH 1870.8.31.68-69 (syntypes of *Dicerobatis draco*), 2 male embryos, 36.8 and 34.6 cm DW, Misol Island, West Papua, Indonesia; CAS 56095 (neotype of *M. eregoodootenkee*), adult male 96.9 cm DW, Gulf of Siam, Cambodia, 5.5 m depth, 26–27 March 1961; CSIRO H 7776-01 (tissue accession GN 11296), embryo 31 cm DW, CSIRO H 7776-02 (tissue accession GN 11297), embryo 23.8 cm DW, Tanjung Luar landing site, Lombok, Indonesia, 27 February 2011; MNHN 0000-1596 (lectotype), juvenile male 71.7 cm DW, 70.6 cm TL, India; MZB 15036 (tissue accession



GN 11235), male 116 cm DW, Tanjung Luar landing site, Lombok, Indonesia, 8 June 2002; NMW 77991; field code BRU-031 (tissue accession GN4337), male 132.5 cm DW, Iloilo City fishing port, Philippines, 13 February 1999.

*Photographed (not retained)*: Field code HBO122 (tissue accession GN3019), male 114 cm DW, Tawau, Sabah, Malaysia, 28 June 2002; field code BO15, male 80.5 cm DW, Sematan, Sarawak, Malaysia, 1 June 2002; field code MM-835, female 92 cm DW, Gulf of Oman, Iran, 22 September 2010; pregnant females 135.2 and 134.2 cm DW, Tanjung Luar landing site, Lombok, Indonesia, 27 February 2011; male 104.1 cm DW, Sabah, Malaysia; adult male 105 cm DW, Al Khor, Qatar, 24 April 2009; female ~100 cm DW, northern Australia; adult male, Muttrah, Oman, 20 September 2010.

*Not retained, tissue sampled*: Field code JPAG 303 (tissue accession GN4327), Philippines, 18 April 2007; tissue accession GN9426, female, tissue accession GN9427, male, tissue accession GN9428, male, tissue accession GN9429, male, tissue accession GN9430, female, tissue accession GN9431 (nominally identified *M. eregoodootenkee*), female, tissue accession GN9432, male, Muttrah, Oman, 1 March 2011; tissue accession GN9437 (nominally identified *M. eregoodootenkee*), female, Muttrah, Oman, 4 December 2010; tissue accession GN9580, Barka, Oman, 7 December 2011; tissue accession GN9678 and GN9679, Arabian Sea coast of Oman; tissue accession GN9680, Sharjah, Oman; tissue accession GN9726, female, Muttrah, Oman, 29 May 2010; tissue accession GN9729, female, Muttrah, Oman, 24 August 2011; tissue accession GN9737, male, tissue accession GN9738, male, Muttrah, Oman, 20 September 2010; tissue accession GN9747, female, Muttrah, Oman, 23 August 2011; tissue accessions GN15461 (nominally identified *M. eregoodootenkee*), GN15462 (nominally identified *M. eregoodootenkee*), GN15463 (nominally identified *M. eregoodootenkee*), GN15464 (nominally identified *M. eregoodootenkee*), GN15465 (nominally identified *M. eregoodootenkee*), South Africa.

#### *MOBULA MOBULAR* (BONNATERRE, 1788)

CSIRO H 6139-01 (tissue accession GN11234, nominally identified *M. japanica*), juvenile female 64.5 cm DW, Pelabuhanratu landing site, West Java, Indonesia, 16 August 2002; CSIRO H 6446-01 (one clasper only), adult male 273.6 cm DW, Tanjung Luar landing site, Lombok, Indonesia, 18 August 2005; CSIRO H 6660-05 (dorsal fin and tail only; tissue accession GN11233, nominally identified *M. japanica*), male, Cilacap landing site, Central Java, Indonesia, 10 June 2002;

CSIRO H 5885-04 (dorsal fin only), female, Tanjung Luar landing site, Lombok, Indonesia, 8 June 2002; CSIRO H 5885-05 (gill arch only), adult male, Tanjung Luar landing site, Lombok, Indonesia, 8 June 2002; CSIRO H 7775-03, 84 cm DW, 183.2 cm TL, Tanjung Luar landing site, Lombok, Indonesia, 7 October 2009; HUMZ 96485, juvenile female 108.5 cm DW, 192.9 cm TL, location unknown; HUMZ 144781, female 112 cm DW, 175 cm TL, Usujiri, Japan, August 1996; MZB 15028 (tissue accession GN11232, nominally identified *M. japanica*), female 107.8 cm DW, Kedonganan fish market, Bali, Indonesia, 4 June 2002; RMNH D2440 (dry; lectotype of *M. japanica*), juvenile male ~65 cm DW, Nagasaki, Japan.

*Photographed (not retained)*: Field code PR3, female 92 cm DW, Pelabuhanratu landing site, West Java, Indonesia, 20 April 2001; field code BJ-391 (tissue accession GN5273, nominally identified *M. japanica*), female 207 cm DW, La Paz, Gulf of California, Mexico, 8 September 1993; field code BJ-409 (tissue accession GN5276, nominally identified *M. japanica*), female 209 cm DW, field code BJ-410 (tissue accession GN1562, nominally identified *M. japanica*), female 191 cm DW, La Paz, Gulf of California, Mexico, 11 September 1993; field code BJ-432 (tissue accession GN5287, nominally identified *M. japanica*), male 200 cm DW, La Paz, Gulf of California, Mexico, 26 September 1993; field code BJ-435 (tissue accession GN5289, nominally identified *M. japanica*), 202 cm DW, La Paz, Gulf of California, Mexico, 27 September 1993; field code BJ-772 (tissue accession GN1558, nominally identified *M. japanica*), female 221 cm DW, BJ-773 (tissue accession GN1559, nominally identified *M. japanica*), male 212 cm DW, Punta Arena, Gulf of California, Mexico, 22 June 1996; field code BJ-774, male 218 cm DW, field code BJ-775 (tissue accession GN5433, nominally identified *M. japanica*), female 219.5 cm DW, Punta Arena, Gulf of California, Mexico, 24 June 1996; field code BJ-775 (tissue accession GN5434, nominally identified *M. japanica*), female 211 cm DW, Punta Arena, Gulf of California, Mexico, 25 June 1996; field code BJ-WWW (tissue accession GN5452, nominally identified *M. japanica*), male 211 cm DW, Punta Arena, Gulf of California, Mexico, 27 June 1996; field code VN-60 (tissue accession GN7058, nominally identified *M. japanica*), male > 222 cm DW, VN-61 (tissue accession GN7059, nominally identified *M. japanica*), female > 222 cm DW, Phan Thiet, Vietnam, 15 March 2010; embryo ~50 cm DW, Pelabuhanratu landing site, West Java, Indonesia, 1 July 2001; female 211 cm DW, Cilacap landing site, Central Java, Indonesia, 3 July 2001; male 206 cm DW, Tanjung Luar landing site, Lombok, Indonesia, 26 March 2002; female 182 cm DW, Tanjung Luar landing site, Lombok, Indonesia, 8 June 2002; juvenile male 116 cm DW, female 202 cm DW, Cilacap landing site,

Central Java, Indonesia, 10 June 2002; female 122 cm DW, Kedonganan fish market, Bali, Indonesia, 22 August 2002; female 110 cm DW, Kedonganan fish market, Bali, Indonesia, 17 April 2004; adult male 210 cm DW, Tanjung Luar landing site, Lombok, Indonesia, 26 April 2004; female 151 cm DW, Tanjung Luar landing site, Lombok, Indonesia, 9 March 2005; juvenile male 156.5 cm DW, Tanjung Luar landing site, Lombok, Indonesia, 13 July 2005; female 187.2 cm DW, Tanjung Luar landing site, Lombok, Indonesia, 27 March 2006; female 179.7 cm DW, Tanjung Luar landing site, Lombok, Indonesia, 28 March 2006; Field code PC45, 141.1 cm DW, Pacitan fish landing site, East Java, Indonesia, 17 October 2008; Field code LM353, 112.8 cm DW, 223.6 cm TL, Tanjung Luar landing site, Lombok, Indonesia, 7 October 2009; female embryo 68.2 cm DW, Pelabuhanratu landing site, West Java, Indonesia.

*Not retained, tissue sampled:* Tissue accession GN8642 (nominally identified *M. japonica*), male, Muttrah, Oman, 23 August 2011; tissue accession GN9579 (nominally identified *M. japonica*), male, Muttrah, Oman, 19 July 2011; tissue accession GN9681 (nominally identified *M. japonica*), Ras al Khaimah, Oman; tissue accession GN9727 (nominally identified *M. japonica*), female, Muttrah, Oman, 6 September 2010; tissue accession GN9739 (nominally identified *M. japonica*), female, Muttrah, Oman, 15 June 2011; tissue accession GN10565 (nominally identified *M. japonica*), Japan, 26 September 2012; tissue accession GN12940 (nominally identified *M. japonica*), Kagoshima, Japan; tissue accession GN15654, between Mallorca and Menorca Islands, Spain, 25 August 2009.

*MOBULA MUNKIANA* NOTARBARTOLO  
DI SCIARA, 1987

*Photographed (not retained):* Field code BJ-275 (tissue accession GN2286), male 86 cm DW, Santa Rosalia, Gulf of California, Mexico, 20 August 1993; field code BJ-294, female 100 cm DW, Santa Rosalia, Gulf of California, Mexico, 20 August 1993; field code BJ-315 (tissue accession GN5255), female 90 cm DW, field code BJ-319 (tissue accession GN5257), female 86 cm DW, Loreto, Gulf of California, Mexico, 27 August 1993; field code BJ-358, male 104 cm DW, BJ-361, male 82 cm DW, Loreto, Gulf of California, Mexico, 1 September 1993.

*Not retained, tissue sampled:* Field code BJ-310 (tissue accession GN5251), male 87 cm DW, BJ-311 (tissue accession GN5252), female 92 cm DW, BJ-312 (tissue accession GN5253), female 99.5 cm DW, field code BJ-320 (tissue accession GN5258), female 93 cm DW, Loreto, Gulf of California, Mexico, 27 August 1993; field code BJ-413 (tissue accession GN5278), female

100 cm DW, La Paz, Gulf of California, Mexico, 11 September 1993.

*MOBULA TARAPACANA* (PHILIPPI, 1892)

CSIRO H 6660-06 (dorsal fin and tail only; tissue accession GN11236), female, Cilacap landing site, Central Java, Indonesia, 10 June 2002; CSIRO H 5885-06 (gill arch only), adult male, Tanjung Luar landing site, Lombok, Indonesia, 8 June 2002; CSIRO H 7406-04 (dorsal fin only), 278 cm DW, Tanjung Luar landing site, Lombok, Indonesia, 4 March 2009; MNHN 1965-0144 (holotype of *Mobula coilloti*), male, ~10 miles south of Iridi, Ivory Coast, western Africa, 13 March 1959.

*Photographed (not retained):* adult male 288 cm DW, Cilacap landing site, Central Java, Indonesia, 2 July 2001; adult male 265 cm DW, Tanjung Luar landing site, Lombok, Indonesia, 8 June 2002; female 201 cm DW, Cilacap landing site, Central Java, Indonesia, 10 June 2002; female 288.6 cm DW, Tanjung Luar landing site, Lombok, Indonesia, 11 July 2004; female 318.2 cm DW, female 267 cm DW, Tanjung Luar landing site, Lombok, Indonesia, 13 July 2004; male 186.7 cm DW, Tanjung Luar landing site, Lombok, Indonesia, 12 October 2004; male 182.8 cm DW, female 219.5 cm DW, female 272.6 cm DW, female 246.9 cm DW, Tanjung Luar landing site, Lombok, Indonesia, 19 January 2005; female 151 cm DW, Tanjung Luar landing site, Lombok, Indonesia, 9 March 2005; male 194.2 cm DW, Tanjung Luar landing site, Lombok, Indonesia, 10 July 2005; female 303.4 cm DW, Tanjung Luar landing site, Lombok, Indonesia, 26 March 2006; female 258.7 cm DW, female 235.7 cm DW, Tanjung Luar landing site, Lombok, Indonesia, 26 October 2008; 278 cm DW, Tanjung Luar landing site, Lombok, Indonesia, 4 March 2009.

*Not retained, tissue sampled:* Tissue accession GN10564, Japan, 26 September 2012.

*MOBULA THURSTONI* (LLOYD, 1908)

CSIRO H 7774-01 (juvenile male 78.7 cm DW, Tanjung Luar landing site, Lombok, Indonesia, 14 July 2005; CSIRO H 7775-01 (head only), ~210 cm DW, CSIRO H 7775-02, ~166 cm DW, Tanjung Luar landing site, Lombok, Indonesia, 7 October 2009; HUMZ 114050, juvenile male 86 cm DW, 119.1 cm TL, Usujiri, Japan, 24 August 1989; MZB 15007, juvenile female 82.6 cm DW, Tanjung Luar landing site, Lombok, Indonesia, 13 July 2004; MZB 15037, female 94 cm DW, Tanjung Luar landing site, Lombok, Indonesia, 12 July 2005; MZB 15444 (tissue accession GN11237), female 91.5 cm DW, Cilacap landing site, Central Java, Indonesia, 11 June

2002; RMNH unregistered, male embryo ~42 cm DW, no collection data; SMEC KBU 1 15397, male embryo 34.7 cm DW, Sabah, Malaysia, 15 March 1997.

*Photographed (not retained)*: Field code BJ-330 (tissue accession GN5263), male 96 cm DW, Loreto, Gulf of California, Mexico, 29 August 1993; field code BJ-360, male 83 cm DW, Loreto, Gulf of California, Mexico, 1 September 1993; field code BJ-429 (tissue accession GN5284), female 180 cm DW, La Paz, Gulf of California, Mexico, 25 September 1993; field code BJ-434, female 149 cm DW, La Paz, Gulf of California, Mexico, 26 September 1993; field code BJ-705 (tissue accession GN1560), male 172 cm DW, BJ-706 (tissue accession GN1561), male 169 cm DW, Santa Rosalia, Gulf of California, Mexico, 13 June 1996; field codes SP-10, female 115.5 cm TL, SP-11, male 126 cm TL, Gulf of California, Mexico, 18 July 1994; male 145 cm DW, Tanjung Luar landing site, Lombok, Indonesia, 10 September 2004; female 107.1 cm DW, Tanjung Luar landing site, Lombok, Indonesia, 12 October 2004; male 111.5 cm DW, Kedonganan fish market, Bali, Indonesia, 7 July 2005; female 113 cm DW, Tanjung Luar landing site, Lombok, Indonesia, 12 July 2005.

*Not retained, tissue sampled*: Field code BJ-351 (tissue accession GN5268), male 89 cm DW, Loreto, Gulf of California, Mexico, 1 September 1993; field code BJ-378 (tissue accession GN5270), male 170 cm DW, La Paz, Gulf of California, Mexico, 6 September 1993; field code BJ-411 (tissue accession GN5277), male 171 cm DW, La Paz, Gulf of California, Mexico, 11 September 1993; field code BJ-431 (tissue accession GN5286), male 172 cm DW, La Paz, Gulf of California, Mexico, 25 September 1993; tissue accession GN9725, male, Muttrah, Oman, 3 August 2010; tissue accession GN9728, male, Muttrah, Oman, 17 August 2010.

#### ACKNOWLEDGEMENTS

We would like to thank the following people for their contribution to this study: Alastair Graham (CSIRO) for providing collection information; John Pogonoski (CSIRO) for providing editorial feedback on the final draft of the manuscript; Carlie Devine (CSIRO) for preparing images; Alec Moore (RSK Group) for providing images from the Persian Gulf; Simon Weigmann (University of Hamburg) for helping to track down obscure references; Alan Reeve and Tariq Al-Mamari (Sultan Qaboos University) for their help with specimen collection. Kerri Matthes and Elisabeth Rochel performed data collection for the mitochondrial *NADH2* dataset. We would also like to thank the following museum staff for their hospitality during museum visits by WW and for providing collection

data for material examined: Mamoru Yabe, Hisashi Imamura, Toshio Kawai, Kazuhiro Nakaya, Keisuke Ogimoto and other students (HUMZ); James Maclaine and Oliver Crimmen (BMNH); Romain Causse, Bernard Séret, Guy Duhamel, Patrice Pruvost, Zora Gabsi and Claude Ferrara (MNHN); Ronald de Ruiter and Martien van Oijen (RMNH); and Renny Hadiaty (MZB). Thanks also to Janine Caira (University of Connecticut, USA) and Kirsten Jensen (Kansas University, USA) for their elasmobranch host specimen database available at <http://tapewormdb.uconn.edu>. Four of us (WW, SC, LY and GN) were supported by a National Science Foundation (NSF; <http://www.nsf.gov>) grant (Jaws and Backbone: Chondrichthyan Phylogeny and a Spine for the Vertebrate Tree of Life; DEB-01132229). The first author was also supported by the CSIRO's Oceans & Atmosphere Flagship and the National Research Collections Australia.

#### REFERENCES

- Adnet S, Capetta H, Guinot G, Notarbartolo di Sciara G. 2012.** Evolutionary history of the devilrays (Chondrichthyes: Myliobatiformes) from fossil and morphological inference. *Zoological Journal of the Linnean Society* **166**: 132–159.
- Altschul SF, Madden TL, Schäffer AA, Zhang J, Zhang Z, Miller W, Lipman DJ. 1997.** Gapped BLAST and PSI-BLAST: a new generation of protein database search programs. *Nucleic Acids Research* **25**: 3389–3402.
- Aschliman NC. 2011.** *The batoid Tree of Life: Recovering the patterns and timing of the evolution of skates, rays and allies (Chondrichthyes: Batoidea)*. Electronic Theses, Treatises and Dissertations. Paper 242.
- Aschliman NC. 2014.** Interrelationships of the durophagous stingrays (Batoidea: Myliobatidae). *Environmental Biology of Fishes* **97**: 967–979.
- Bigelow HR, Schroeder DM. 1953.** Fishes of the Western North Atlantic. Part Two. Sawfishes, guitarfishes, skates and rays. Chimaeroids. *Memoirs of the Sears Foundation for Marine Research* **1**: 1–588.
- Birney E, Clamp M, Durbin R. 2004.** GeneWise and Genomewise. *Genome Research* **14**: 988–995.
- Biról I, Jackman SD, Nielsen CB, Qian JQ, Varhol R, Stazyk G, Morin RD, Zhao Y, Hirst M, Schein JE, Horsman DE, Connors JM, Gascoyne RD, Marra MA, Jones SJ. 2009.** De novo transcriptome assembly with ABySS. *Bioinformatics (Oxford, England)* **25**: 2872–2877.
- Bleeker P. 1859.** Enumeratio specierum piscium hucusque in Archipelago indico observatarum, adjectis habitationibus citationibusque, ubi descriptiones earum recentiores reperiuntur, nec non speciebus Musei Bleekeriani Bengalensibus, Japonicis, Capensibus Tasmanicisque. *Acta Societatis Regiae Scientiarum Indo-Neerlandicae* **6**: 1–276.
- Bloch ME, Schneider JG 1801.** M. E. Blochii, Systema Ichthyologiae Iconibus cx Illustratum. Post obitum auctoris opus inchoatum absolvit, correxit, interpolavit Jo. Gottlob



- Schneider, Saxo. Berolini. Sumtibus Auctoris Impressum et Bibliopolio Sanderiano Commissum. Available at: <http://www.biodiversitylibrary.org/item/28060#page/5/mode/1up>
- Bonnaterre JP. 1788.** *Tableau encyclopédique et méthodique des trois règnes de la nature... Ichthyologie*. Paris: Panckoucke.
- Brünnich MT. 1768.** *Ichthyologia Massiliensis, sistens piscium descriptiones eorumque apud incolas nomina. Accedunt Spolia Maris Adriatici. Hafniae et Lipsiae*. Qvae Hafniae Floret: Societati Regiae Scientiarum.
- Cadenat J. 1959.** Notes d'Ichthyologie ouest-africaine. XXV.-- Description d'une *Mobula* de grande taille, à aiguillon caudal, de Côte d'Ivoire: *Mobula rancureli*, sp. nov. *Bulletin de l'Institut Français d'Afrique Noire (Sér A) Sciences Naturelles* **21**: 1326–1335.
- Cantor TE. 1849.** Catalogue of Malayan fishes. *Journal of the Asiatic Society of Bengal* **18**: 983–1443.
- Capella-Gutiérrez S, Silla-Martínez JM, Gabaldón T. 2009.** trimAl: a tool for automated alignment trimming in large-scale phylogenetic analyses. *Bioinformatics (Oxford, England)* **25**: 1972–1973.
- Chifman J, Kubatko L. 2014.** Identifiability of the unrooted species tree topology under the coalescent model with time-reversible substitution processes, site-specific rate variation, and invariable sites. *Journal of Theoretical Biology* **374**: 35–47.
- Chou J, Gupta A, Yaduvanshi S, Davidson R, Nute M, Mirarab S, Warnow T. 2015.** A comparative study of SVDquartets and other coalescent-based species tree estimation methods. *BMC Genomics* **16**(Suppl 10): S2.
- Couturier LI, Marshall AD, Jaine FR, Kashiwagi T, Pierce SJ, Townsend KA, Weeks SJ, Bennett MB, Richardson AJ. 2012.** Biology, ecology and conservation of the Mobulidae. *Journal of Fish Biology* **80**: 1075–1119.
- Cuvier G. 1816.** *Le Règne Animal distribué d'après son organisation pour servir de base à l'histoire naturelle des animaux et d'introduction à l'anatomie comparée. Les reptiles, les poissons, les mollusques et les annélides*. 1st edn. Vol. **2**: 1–532. Paris: Chez Deterville, Libraire.
- Cuvier G. 1829.** *Le Règne Animal, distribué d'après son organisation, pour servir de base à l'histoire naturelle des animaux et d'introduction à l'anatomie comparée*. 2nd edn. Vol. **2**: 1–406. Paris: Chez Deterville, Libraire.
- Dor M. 1984.** *Checklist of the fishes of the Red Sea. CLOFRES*. Jerusalem: Israel Academy of Sciences and Humanities.
- Duhamel du Monceau HL. 1780.** *Descriptions des arts et métiers, faites ou approuvées par Messieurs de l'Académie royale des sciences: Traité général des pesches: Traité Général des Pêches. Suite de la seconde partie. Tome III, Section IX, Chapter III plus addition*. Paris: Royal Academy of Sciences.
- Ebersberger I, Strauss S, von Haeseler A. 2009.** HamStR: profile hidden markov model based search for orthologs in ESTs. *BMC evolutionary biology* **9**: 157.
- Ebert DA, Stehmann MFW. 2013.** *Sharks, batoids, and chimaeras of the North Atlantic FAO Species Catalogue for Fishery Purposes*. No. 7. Rome: FAO.
- Eddy SR. 1998.** Profile hidden Markov models. *Bioinformatics (Oxford, England)* **14**: 755–763.
- Eddy SR. 2011.** Accelerated Profile HMM Searches. *PLoS Computational Biology* **7**: e1002195.
- Eschmeyer WN. 2015.** Catalog of Fishes: Genera, Species, References. (<http://research.calacademy.org/research/ichthyology/catalog/fishcatmain.asp>). Electronic version accessed 25 June 2015.
- Fisher S, Barry A, Abreu J, Minie B, Nolan J, Delorey TM, Young G, Fennell TJ, Allen A, Ambrogio L, Berlin AM, Blumenstiel B, Cibulskis K, Friedrich D, Johnson R, Juhn F, Reilly B, Shammis R, Stalker J, Sykes SM, Thompson J, Walsh J, Zimmer A, Zwirko Z, Gabriel S, Nicol R, Nusbaum C. 2011.** A scalable, fully automated process for construction of sequence-ready human exome targeted capture libraries. *Genome Biology* **12**: R1.
- Forsskål PS. 1775.** *Descriptiones animalium, avium, amphibiorum, piscium, insectorum, vermium / quae in itinere orientali observavit Petrus Forsskål. Post mortem auctoris edidit Carsten Niebuhr. Adjuncta est materia medica kahirina atque tabula maris Rubri geographica. Hauniae*. Available at : <http://www.biodiversitylibrary.org/item/18564#page/9/mode/1up>
- Fricke R. 1992.** Types in the fish collection of the Staatliches Museum für Naturkunde in Stuttgart. Part 2. The Klunzinger collection. *Stuttgarter Beiträge zur Naturkunde. Serie A (Biologie)*. **473**: 1–25.
- Fricke R, Eschmeyer WN 2015.** Guide to fish collections. (<http://researcharchive.calacademy.org/research/ichthyology/catalog/collections.asp>). Accessed 1 July 2015.
- Gentil M le. 1779.** *Voyage fait par ordre du roi, dans les mers de l'Inde. Vol. 1. p. 707*. Paris: De l'Imprimerie Royale.
- Henderson AC, Reeve AJ, Jabado RW, Naylor GJP. 2016.** Taxonomic assessment of sharks, rays and guitarfishes (Chondrichthyes: Elasmobranchii) from south-eastern Arabia, using the NADH dehydrogenase subunit 2 (NADH2) gene. *Zoological Journal of the Linnean Society* **176**: 399–442.
- Herman J, Hovestadt-Euler M, Hovestadt DC, Stehmann M. 2000.** Part B: Batomorphii. N°4c. Order Rajiformes – Suborder Myliobatoidei- Superfamily: Dasyatoidea- Family Dasyatidae- Subfamily Dasyatinae- Genus: *Urobatis*, Subfamily Potamotrygoninae – Genus: *Paratrygon*, Superfamily Plesiobatoidea – Family Plesiobatidae – Genus: *Plesiobatis*, Superfamily Myliobatoidea – Family Myliobatidae – Subfamily Myliobatinae – Genera: *Aetobatus*, *Aetomylaeus*, *Myliobatis* and *Pteromylaeus*, Subfamily Rhinopterae – Genus: *Rhinoptera* and Subfamily Mobulinae – Genera: *Manta* and *Mobula*. Addendum 1 to 4a: erratum to genus *Pteroplatytrygon*. In Contributions to the study of the comparative morphology of teeth and other relevant ichthyodermulites in living supraspecific taxa of Chondrichthyan fishes. M. Stehmann Edit. *Bulletin de l'Institut Royal des Sciences Naturelles de Belgique* **70**: 5–67.
- Jordan DS, Evermann BW. 1896.** The fishes of North and Middle America: a descriptive catalogue of the species of fish-like vertebrates found in the waters of North America, north of the Isthmus of Panama. Part I. *Bulletin of the United States National Museum* **47**: 1–1240.
- Kashiwagi T, Marshall AD, Bennett MB, Ovenden JR. 2012.** The genetic signature of recent speciation in manta



- rays (*Manta alfredi* and *M. birostris*). *Molecular Phylogenetics and Evolution* **64**: 212–218.
- Katoh K, Standley DM. 2013.** MAFFT multiple sequence alignment software version 7: improvements in performance and usability. *Molecular Biology and Evolution* **30**: 772–780.
- Kingman J. 1982.** The coalescent. *Stochastic Processes and their Applications* **13**: 235–248.
- Klunzinger CB. 1871.** Synopsis der Fische des Rothen Meeres. II. Theil. *Verhandlungen der K.-K. zoologisch-botanischen Gesellschaft in Wien* **21**: 441–688.
- Kreff G, Stehmann MFW 1973.** Mobulidae, p. 77. In: Hureau JC, Monod T, eds. *Check-list of the Fishes of the North-eastern Atlantic and of the Mediterranean. CLOFNAM. vol 1*. Paris: Unesco.
- Krueger F. 2012.** Trim Galore!. Available at: [[http://www.bioinformatics.babraham.ac.uk/projects/trim\\_galore/](http://www.bioinformatics.babraham.ac.uk/projects/trim_galore/)].
- Lacepède BGE. 1798.** *Histoire naturelle des poissons. 1*: 1–532.
- Lacepède BGE. 1800.** *Histoire naturelle des poissons. 2*: 1–632.
- Lacepède BGE. 1803.** *Histoire naturelle des poissons. 5*: 1–803.
- Last PR, Stevens JD. 2009.** *Sharks and rays of Australia*. 2nd edn. Melbourne: CSIRO Publishing.
- Lesueur CA. 1824.** Description of several species of the Linnaean genus *Raia*, of North America. *Journal of the Academy of Natural Sciences, Philadelphia* **4**: 100–121.
- Li C, Hofreiter M, Straube N, Corrigan S, Naylor GJ. 2013.** Capturing protein-coding genes across highly divergent species. *BioTechniques* **54**: 321–326.
- Maddison W. 1997.** Gene trees in species trees. *Systematic Biology* **46**: 523–536.
- Marshall AD, Compagno LJV, Bennett MB. 2009.** Redescription of the genus *Manta* with resurrection of *Manta alfredi* (Kreff, 1868) (Chondrichthyes; Myliobatoidei; Mobulidae). *Zootaxa* **2301**: 1–28.
- McEachran JD, Séret B. 1990.** Mobulidae. In: Quéro JC, Hureau JC, Karrer C, Post A, Saldanha L. *Check-list of the fishes of the eastern tropical Atlantic. CLOFETA. Vol. 1*. Paris: UNESCO, 73–76.
- Meyer M, Kircher M. 2010.** Illumina sequencing library preparation for highly multiplexed target capture and sequencing. *Cold Spring Harbor Protocols* **2010**: pdb.prot5448.
- Müller J. 1836.** Vergleichende Anatomie der Myxinoiden, der Cyclostomen mit durchbohrtem Gaumen. Erster Theil. Osteologie und Myologie. *Abhandlungen der Königl. Akademie der Wissenschaften zu Berlin* **1834**: 65–340.
- Müller J, Henle FGJ. 1841.** *Systematische Beschreibung der Plagiostomen*. Berlin: Verlag Von Veit Und Comp. pp. 103–200.
- Naylor G, Caira J, Jensen K, Rosana K, Straube N, Lakner C. 2012a.** Elasmobranch phylogeny: A mitochondrial estimate based on 595 species. In: Carrier J, Musick J, Heithaus M, eds. *Biology of sharks and their relatives*, 2nd edn. Boca Raton, FL: CRC Press.
- Naylor G, Caira J, Jensen K, Rosana K, White W, Last P. 2012b.** A DNA sequence-based approach to the identification of shark and ray species and its implications for global elasmobranch diversity and parasitology. *Bulletin of the American Museum of Natural History* **367**: 1–262.
- Notarbartolo di Sciara G. 1987.** A revisionary study of the genus *Mobula* Rafinesque, 1810 (Chondrichthyes: Mobulidae) with the description of a new species. *Zoological Journal of the Linnean Society* **91**: 1–91.
- Notarbartolo di Sciara G, Fernando D, Adnet S, Cappetta H, Jabado RW. 2016.** Devil rays (Chondrichthyes: Mobula) of the Arabian Seas, with a redescription of *Mobula kuhlii* (Valenciennes in Müller and Henle, 1841). *Aquatic Conservation: Marine and Freshwater Ecosystems* online first. doi: 10.1002/aqc.2635.
- Paig-Tran EW, Kleinteich T, Summers AP. 2013.** The filter pads and filtration mechanisms of the devil rays: Variation at macro and microscopic scales. *Journal of Morphology* **274**: 1026–1043.
- Poortvliet M, Olsen JL, Croll DA, Bernardi G, Newton K, Kollias S, O'Sullivan J, Fernando D, Stevens G, Galván Magaña F, Séret B, Wintner S, Hoarau G. 2015.** A dated molecular phylogeny of manta and devil rays (Mobulidae) based on mitogenome and nuclear sequences. *Molecular Phylogenetics and Evolution* **83**: 72–85.
- Posada D, Buckley TR. 2004.** Model selection and model averaging in phylogenetics: advantages of akaike information criterion and bayesian approaches over likelihood ratio tests. *Systematic Biology* **53**: 793–808.
- Risso A. 1810.** *Ichthyologie de Nice, ou histoire naturelle des poissons du département des Alpes Maritimes*. Paris: F. Schoell.
- Robertson G, Schein J, Chiu R, Corbett R, Field M, Jackman SD, Mungall K, Lee S, Okada HM, Qian JQ, Griffith M, Raymond A, Thiessen N, Cezard T, Butterfield YS, Newsome R, Chan SK, She R, Varhol R, Kamoh B, Prabhu AL, Tam A, Zhao YJ, Moore RA, Hirst M, Marra MA, Jones SJM, Hoodless PA, Birol I. 2010.** De novo assembly and analysis of RNA-seq data. *Nature Methods* **7**: 909–912.
- Roch S, Steel M. 2015.** Likelihood-based tree reconstruction on a concatenation of aligned sequence data sets can be statistically inconsistent. *Theoretical Population Biology* **100**: 56–62.
- Russell P. 1803.** *Descriptions and figures of two hundred fishes; collected at Vizagapatam on the coast of Coromandel. Vol. 2*. London: G & W Nicol.
- Schneider JG. 1788.** Neue Beiträge zur Naturgeschichte des Rochengeslechts, nebst Beschreibung von ein paar neuen Arten. *Leipziger Magazin zur Naturkunde und Oekonomie / herausgegeben von einer Gesellschaft von Gelehrten* **1**: 73–90.
- Shaw G. 1804.** *General zoology or systematic natural history. Pisces*. London: G. Kearsley.
- Simpfendorfer CA, Heupel MR, White WT, Dulvy NK. 2011.** The importance of research and public opinion to conservation management of sharks and rays: a synthesis. *Marine & Freshwater Research* **62**: 518–527.
- Swainson W. 1839.** *On the natural history and classification of fishes, amphibians, & reptiles, or monocardian animals*. London: Spottiswoode & Co. **2**: 1–448.

**Swofford D. 2002.** *PAUP\**. *Phylogenetic analysis using parsimony (\* and other methods)*. Version 4. Sunderland, MA: Sinauer Associates.

**Vaillant LL 1879.** Note sur une nouvelle espèce d'elasmobranchie hypotrème, le *Cephaloptera rochebrunei*. *Bulletin de la Société philomathique de Paris (7th Série)* **3**: 187–188.

**Venkatesh B, Tay A, Dandona N, Patil JG, Brenner S. 2005.** A compact cartilaginous fish model genome. *Current Biology* **15**: 82–83.

**Walbaum JJ. 1792.** Petri Artedi sueci genera piscium. In quibus systema totum ichthyologiae proponitur cum classibus, ordinibus, generum characteribus, specierum differentiis, observationibus plurimis. Redactis speciebus 242 ad genera 52. Ichthyologiae pars III. *Ant. Ferdin. Rose, Grypeswaldiae [Greifswald]*. **3**: 1–723.

**White WT, Giles J, Dharmadi, Potter IC. 2006.** Data on the bycatch fishery and reproductive biology of mobulid rays (Myliobatiformes) in Indonesia. *Fisheries Research* **82**: 65–73.

## SUPPORTING INFORMATION

Additional Supporting Information may be found in the online version of this article at the publisher's web-site:

**Figure S1.** Maximum Likelihood tree showing nominal identifications of mobulid specimens and the relationships among them, relative to three outgroups (*Aetobatus narinari*, *Myliobatis aquila* and *Rhinoptera bonasus*). The tree was derived from an alignment of mitochondrial *NADH2* sequences (1044 sites) under a TVM + I + G model of molecular evolution.

**Table S1.** Best partitioning scheme for the protein coding components of the mitochondrial genomes.