

紅海産オンケア属カイアシ類の天然餌料,とくに尾虫類ハウスの摂食について

| | |
|-------|--|
| 誌名 | 日本プランクトン学会報 |
| ISSN | 03878961 |
| 著者名 | 大塚,攻 Boettger-Schnack,R. 岡田,昌樹 遠部,卓 |
| 発行元 | 日本プランクトン学会 |
| 巻/号 | 43巻2号 |
| 掲載ページ | p. 89-105 |
| 発行年月 | 1996年12月 |

農林水産省 農林水産技術会議事務局筑波産学連携支援センター
Tsukuba Business-Academia Cooperation Support Center, Agriculture, Forestry and Fisheries Research Council
Secretariat



In situ feeding habits of *Oncaea* (Copepoda: Poecilostomatoida) from the upper 250 m of the central Red Sea, with special reference to consumption of appendicularian houses^{1,2}

SUSUMU OHTSUKA³, RUTH BÖTTGER-SCHNACK⁴, MASAKI OKADA⁵,
AND TAKASHI ONBÉ^{5,6}

Fisheries Laboratory, Hiroshima University, 5-8-1 Minato-machi, Takehara, Hiroshima 725³,
Institut für Meereskunde an der Universität Kiel, Düsternbrooker Weg 20, D-24105 Kiel,
Germany⁴, and Faculty of Applied Biological Science, Hiroshima University,
1-4-4 Kagamiyama, Higashi-Hiroshima 739⁵

Abstract

Gut contents of 9 species and 4 forms of pelagic poecilostomatoid copepods of the genus *Oncaea* collected from the 0–250 m depth layer in the central Red Sea were examined with a differential interference and phase contrast microscope. Appendicularian houses were frequently detected in the guts irrespective of species, sex, time and depth of collection. Houses occurred on average more frequently in females (61%) than in males (42%), with *Oncaea venusta* f. *typica* and *O. clevei* showing the most extreme sex-related differences. Females of *O. conifera*, which is a strong vertical migrator, exhibited a corresponding daily feeding rhythm, with the highest feeding intensity during the night. Diatoms and unidentified minute particles were frequently found in the guts of all species, and these may have been derived indirectly from appendicularian houses or other detritus. Other zooplankters such as copepodids, copepod nauplii and chaetognaths were detected in the guts of relatively large species (>0.7 mm in body length) and rarely in smaller ones (<0.7 mm). The present and previous studies clearly reveal that attachment and feeding of both small and large species of *Oncaea* on appendicularian houses commonly occur in oligotrophic waters in tropical and subtropical regions and in the deep seas. The ecological role of *Oncaea* in these waters is discussed in comparison to that of calanoids.

Key words: *Oncaea*, appendicularian houses, copepodids, diatoms, Red Sea

¹ Received: 7 June 1996/Accepted: 26 August 1996

² 紅海産オンケア属カイアシ類の天然餌料，とくに尾虫類ハウスの摂食について

³ 大塚 攻，広島大学水産実験所

⁴ ルート・ベテガー-シュナック，キール大学海洋研究所

⁵ 岡田昌樹・遠部 卓，広島大学生物生産学部

⁶ Present address: 2-60-406 Saijo Nishi-Honmachi, Higashi-Hiroshima 739

現住所：東広島市西条西本町 2-60-406

The biology and ecology of the pelagic poecilostomatoid copepod families Corycaeidae, Oncaeidae and Sapphirinidae are poorly known compared with the calanoids. Recently the distribution and diel vertical migrations of pelagic poecilostomatoids such as *Copilia*, *Corycaeus*, *Oncaea* and *Sapphirina* have been intensively studied by Böttger (1985, 1987), Böttger-Schnack (1987, 1990a, b, 1992, 1994, 1995, 1996), Chae & Nishida (1995) and Metz (1995). The results showed that these copepods are distributed in markedly different vertical layers, from the epipelagic down to the bathypelagic zone. Corycaeids and most sapphirinids, which are characterized by a pair of well-developed eye lenses, are mainly restricted to the epipelagic zone (Böttger-Schnack 1990a, b, Chae & Nishida 1995). Presumably these lenses function to identify mating partners in *Copilia* and *Sapphirina* (Chae & Nishida 1995) and to detect prey in *Corycaeus* (Gophen & Harris 1981). Oncaeids, which do not possess eye lenses, exhibit much more extended vertical distribution patterns, ranging from the epipelagic to the bathypelagic zones (Böttger-Schnack 1994, 1995, 1996, in press, Metz 1995).

In general, the feeding ecology of poecilostomatoids is still enigmatic. Previous authors have observed both phytoplankton and zooplankton remains in the guts and in the fecal pellets of oncaeid and corycaeid species (Pasternak 1984, Turner 1986, Hopkins 1985, 1987). Alldredge (1972, 1976) first observed *Oncaea* feeding on phyto- and zooplankters remaining on discarded appendicularian houses. Both shallow- and deep-water *Oncaea* spp. occur on appendicularian houses, and these copepods use them as a food source (Ohtsuka & Kubo 1991, Ohtsuka et al. 1992, Steinberg et al. 1994). *Corycaeus* and *Sapphirina* gnaw tissues off juvenile fish and salps, respectively (Nishimura 1960, Heron 1973, Palomares & Vera 1995). Huys & Boxshall (1991) suggest that all pelagic poecilostomatoids are loosely associated with other zooplankters.

The present study reports on a light microscopic analysis of the gut contents of selected *Oncaea* species collected from a station in the central Red Sea. Special attention is paid to their feeding on appendicularian houses. The depth distributions and diel vertical migration patterns of the *Oncaea* species and their potential prey appendicularians at the same station are compared in the present paper.

Materials and Methods

Copepods were collected at a station in the central Red Sea above the Atlantis II Deep (21° 23' N, 38° 04' E) during the day (local time 1100–1500) and night (0000–0400) on 24 February 1981. An opening-closing net (mouth 0.25 m², mesh size 0.1 mm) was towed vertically and activated at 50 m intervals in the upper 450 m of the water column. In the present study only specimens from the upper 250 m samples were utilized. Copepod specimens were fixed with 4% buffered formaldehyde/seawater, and then transferred into a preservative of 5% propylenglycol, 0.5% propylenephenoxytol and 94.5% filtered seawater (Böttger-Schnack 1990b). The vertical profiles of temperature, salinity and dissolved oxygen at the station are described in Böttger-Schnack (see 1990b, Fig. 2). Copepods were sorted from size-

Table 1. *Oncaea* species examined in the present study. Species are listed in order of decreasing size. Distribution and migration pattern of each species and sex adapted from Böttger-Schnack (1990b). Distribution pattern: I, unimodal distribution in upper epipelagic zone (0–50 m); II, unimodal distribution in lower epipelagic zone (50–100/150 m); III, unimodal distribution in upper mesopelagic zone (100–250 m); IV, bimodal distribution in epi- and mesopelagic zones; V, variable distribution in epi- and/or mesopelagic zones. Migration: M, migrant; N, non-migrant; ?, migration not determined.

| Species | Sex | Body length* (mm) | Time | Depth (m) | Number of individuals examined | Distribution pattern* | Migration* |
|------------------------------|-----|----------------------|-------|--------------|--------------------------------------|--------------------------|------------|
| <i>O. venusta f. typica</i> | ♀ | 1.00–1.23 | Day | 0–50 | 20 | I | N |
| | | | Night | 0–50 | 20 | | |
| | ♂ | 0.88–0.95 | Day | 0–50 | 20 | I | N |
| | | | Night | 0–50 | 19 | | |
| <i>O. conifera</i> | ♀ | 0.98–1.06 | Day | 100–150 | 5 | III | M |
| | | | | 150–200 | 5 | | |
| | | | | 200–250 | 10 | | |
| | ♂ | 0.62–0.70 | Night | 0–50 | 18 | II | M |
| | | | Day | 50–100 | 10 | | |
| <i>O. mediterranea</i> | ♀ | 0.90–1.03 | Night | 0–50 | 17 | II | M |
| | | | Day | 50–100 | 18 | | |
| | ♂ | 0.70–0.78 | Night | 0–50 | 10 | II | M |
| | | | Day | 50–100 | 19 | | |
| <i>O. venusta f. venella</i> | ♀ | 0.75–0.88 | Night | 0–50 | 19 | I | N |
| | | | Day | 0–50 | 20 | | |
| | ♂ | 0.55–0.65 | Night | 0–50 | 14 | I | N |
| | | | Day | 0–50 | 19 | | |
| <i>O. clevei</i> | ♀ | 0.62–0.68 | Night | 0–50 | 20 | I | N |
| | | | Day | 0–50 | 15 | | |
| | ♂ | 0.49–0.57 | Night | 0–50 | 9 | I | N |
| | | | Day | 0–50 | 13 | | |
| <i>O. media f. major</i> | ♀ | 0.65–0.77 | Day | 0–50 | 13 | I | N |
| <i>O. umerus</i> | ♀ | 0.57–0.62 | Day | 50–100 | 20 | II | ? |
| | | | Night | 0–50 | 18 | | |
| <i>O. minuta</i> | ♀ | 0.50–0.56 | Day | 0–50 | 9 | V | ? |
| | | | | 50–100 | 8 | | |
| | | | | Night | 0–50 | | |
| | | | | 200–250 | 18 | | |
| <i>O. hawaii</i> | ♀ | 0.49–0.56 | Night | 200–250 | 8 | V | ? |
| <i>O. media f. minor</i> | ♀ | 0.48–0.52 | Day | 0–50 | 20 | IV | ? |
| | | | Night | 0–50 | 19 | | |
| | ♂ | 0.41–0.44 | Day | 0–50 | 8 | I | ? |
| | | | Night | 0–50 | 19 | | |
| <i>O. dentipes</i> | ♀ | 0.44–0.49 | Day | 50–100 | 13 | II | ? |
| | | | Night | 50–100 | 13 | | |

*from Böttger-Schnack (1988, unpubl. data), Böttger-Schnack et al. (1989) and Böttger-Schnack & Boxshall (1990).

fractionated samples or subsamples as described by Böttger-Schnack (1990b). Up to 20 specimens of each species were examined. The taxonomy of *Oncaea* follows Böttger-Schnack (1990b); however, *O. umerus* and *O. hawaii* have only recently been described as new species (Böttger-Schnack & Boxshall 1990). They correspond to *Oncaea* sp. F and E/F of the previous study, respectively. The 9 species and 4 forms

of *Oncaea* examined in the present study are shown in Table 1.

The gut was dissected out of the prosome with a pair of fine needles after immersion of the copepods in distilled water for several hours. The gut was then transferred into gum-chloral medium on a glass slide, and covered with a cover slip. After drying for 4–5 days at a temperature of ca. 50 °C on a hot plate (Sakura, model PS51), gut contents were analyzed with a differential interference and phase contrast microscope (Nikon Optiphot). When a sample contained less than 20 copepods, all individuals were analyzed.

Gut contents of some specimens were stained by 0.03% toluidine blue buffered with Sørensen-Gomori sodium phosphate buffer solution (cf. Mochioka & Iwamizu 1996). This staining method was employed to detect the presence of metachromatically-stained mucopolysaccharide which composes the outer membrane of appendicularian houses (Alldredge 1977).

Results

Items detected in guts

Gut contents are shown in Figures 1 to 4. All species consumed appendicularian houses, which were provisionally identified by their unique characters including the fibers of the incurrent filters (Figure 1), and/or a large amount of packed translucent mucus (house membranes) (Figure 2). The translucent mucus was partly or entirely stained metachromatically in red, strongly suggesting the presence of mucopolysaccharides from appendicularian houses (Figure 3). In addition, the packed mucus contained neither cells nor special structures such as cnidarian nematocysts, radiolarian needles or minipellets (cf. Riemann 1989); the mucus was almost always accompanied with numerous minute particles including broken and/or intact frustules of diatoms, which may have been trapped on the incurrent and/or food-concentrating filters or packed within appendicularian fecal pellets not expelled from the houses (Figure 2A–C). Although it is hard to measure the diameter of fibers in the copepod guts precisely under the light microscope, they seem to be about 0.5–1.0 μm based on Figure 1, which approximately coincides with that of the mesh fibers of the incurrent filter of *Oikopleura labradoriensis* (Flood 1991).

Guts also contained solitary and chain-forming diatoms (Figures 1B, 4D–F) and thecate dinoflagellates (Figure 1D). Intact frustules of both centric and pennate diatoms and thecal plates of dinoflagellates in the guts of females ranged from 4 to 25 μm in largest dimension. Zooplankters such as radiolarians (Figure 1A), copepodids (Figures 2A, 4A, B), copepod nauplii and unidentified crustaceans were also found in the guts. Copepodid bodies of almost perfect condition were found only in females of some of the larger species including *Oncaea venusta* f. *typica*, *O. conifera* and *O. venusta* f. *venella*. Grasping spines from chaetognaths were detected in a female of *O. venusta* f. *typica*. Cnidarian nematocysts (Figure 4C) were found infrequently in the guts. Unidentified minute particles (Figure 4F) were discovered in almost all guts.

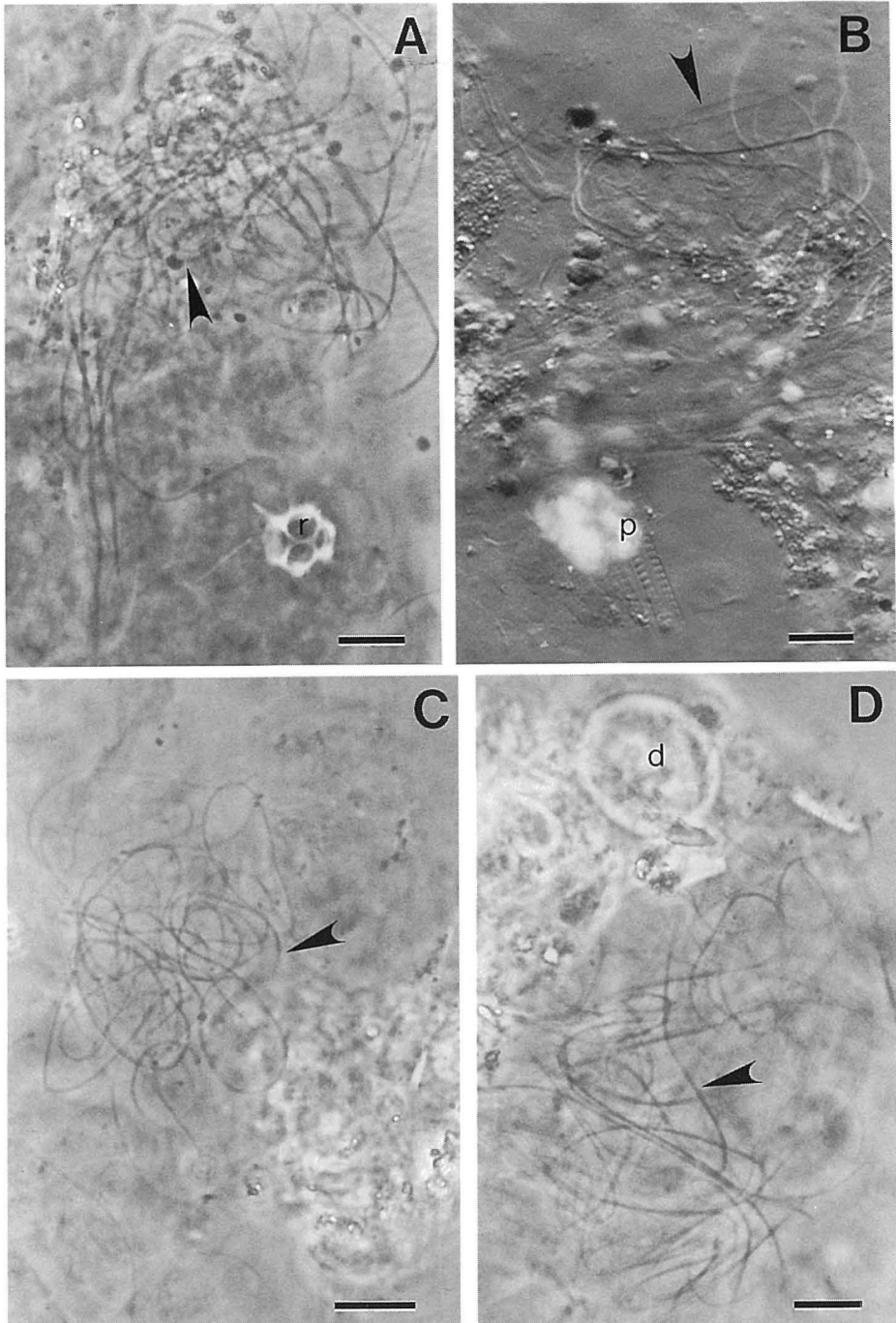


Fig. 1. Fibers of incurrent filters of appendicularian houses in the guts of *Oncaea* species, arrowed. A, *O. venusta* f. *venella*, female, night, 0–50 m, r: radiolarian; B, *O. venusta* f. *typica*, female, night, 0–50 m, p: pennate diatom frustles; C, *O. mediterranea*, male, day, 50–100 m; D, *O. conifera*, female, night, 0–50 m, d: dinoflagellate. Scale bars = 10 μ m (A, B, D); 50 μ m (C).

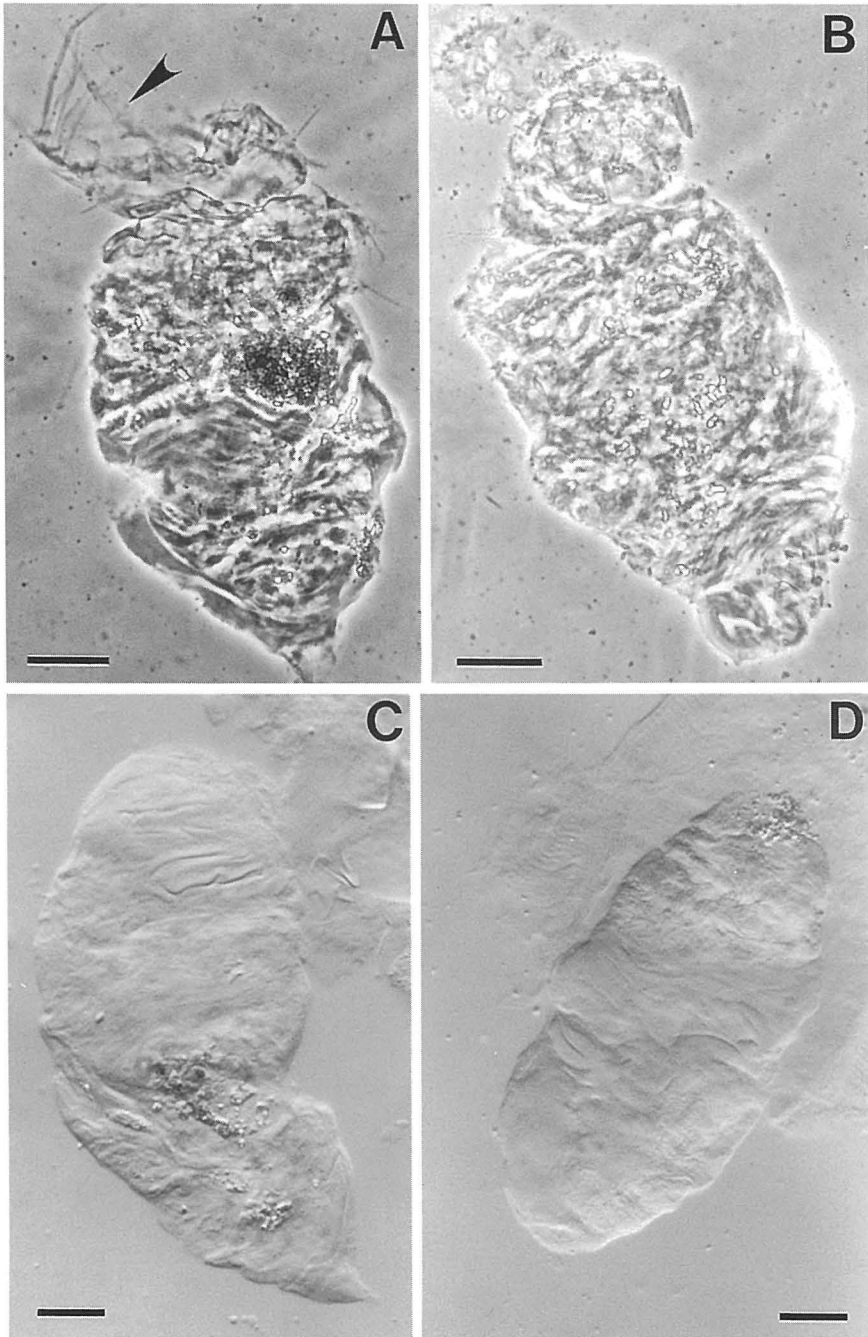


Fig. 2. Packed house membranes of appendicularians detected in the guts of *Oncaea* species. A, *O. venusta* f. *typica*, female, day, 0–50 m, copepodid fragments arrowed; B, *O. mediterranea*, female, night, 0–50 m; C, *O. minuta*, female, night, 0–50 m; D, *O. media* f. *minor*, male, day, 50–100 m. Scale bars = 50 μm (A, B); 20 μm (C, D).

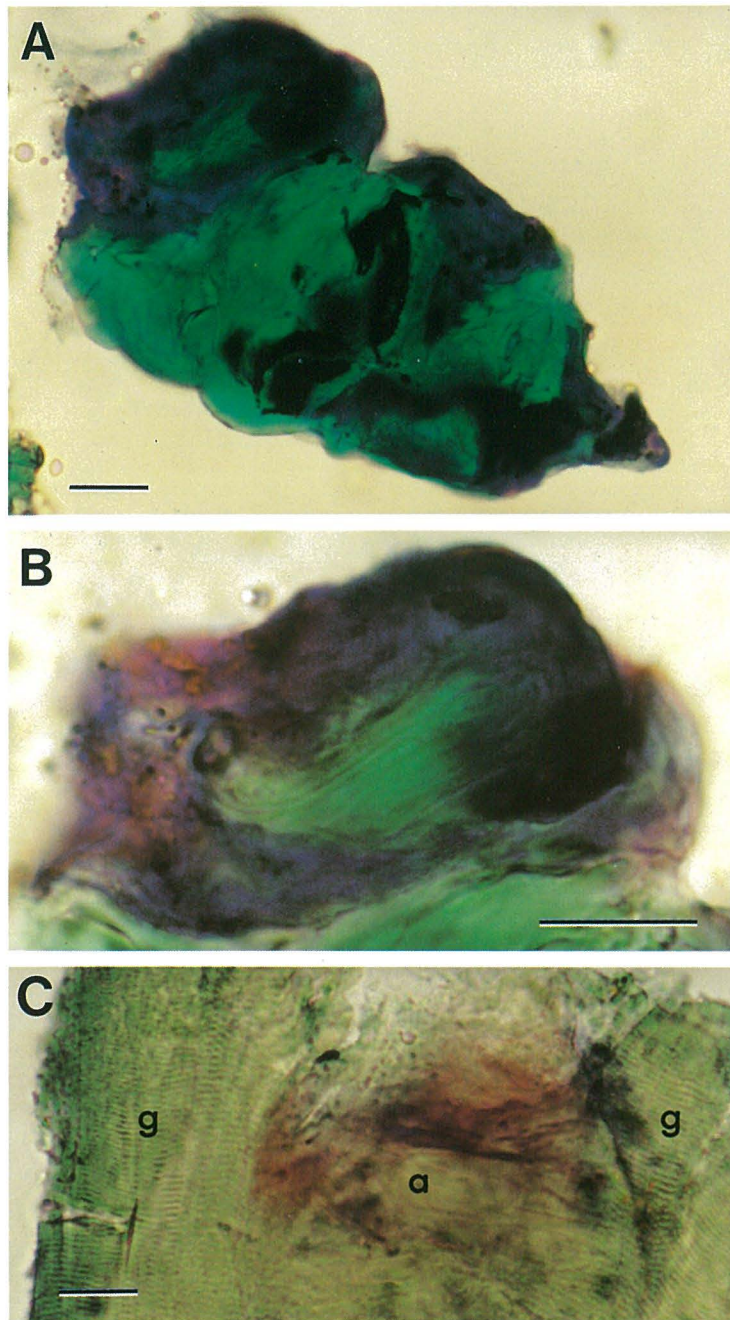


Fig. 3. Appendicularian houses detected in the guts of *Oncaea* species, and metachromatically stained. Note the difference in color: parts containing mucopolysaccharides are stained in reddish purple while others are stained in blue. A, *O. conifera*, female, night, 0–50 m; B, magnification of A; C, *O. venusta f. venella*, female, night, 0–50 m, g: gut tissue of copepod, a: appendicularian house remain in gut. Scale bars = 20 μm .

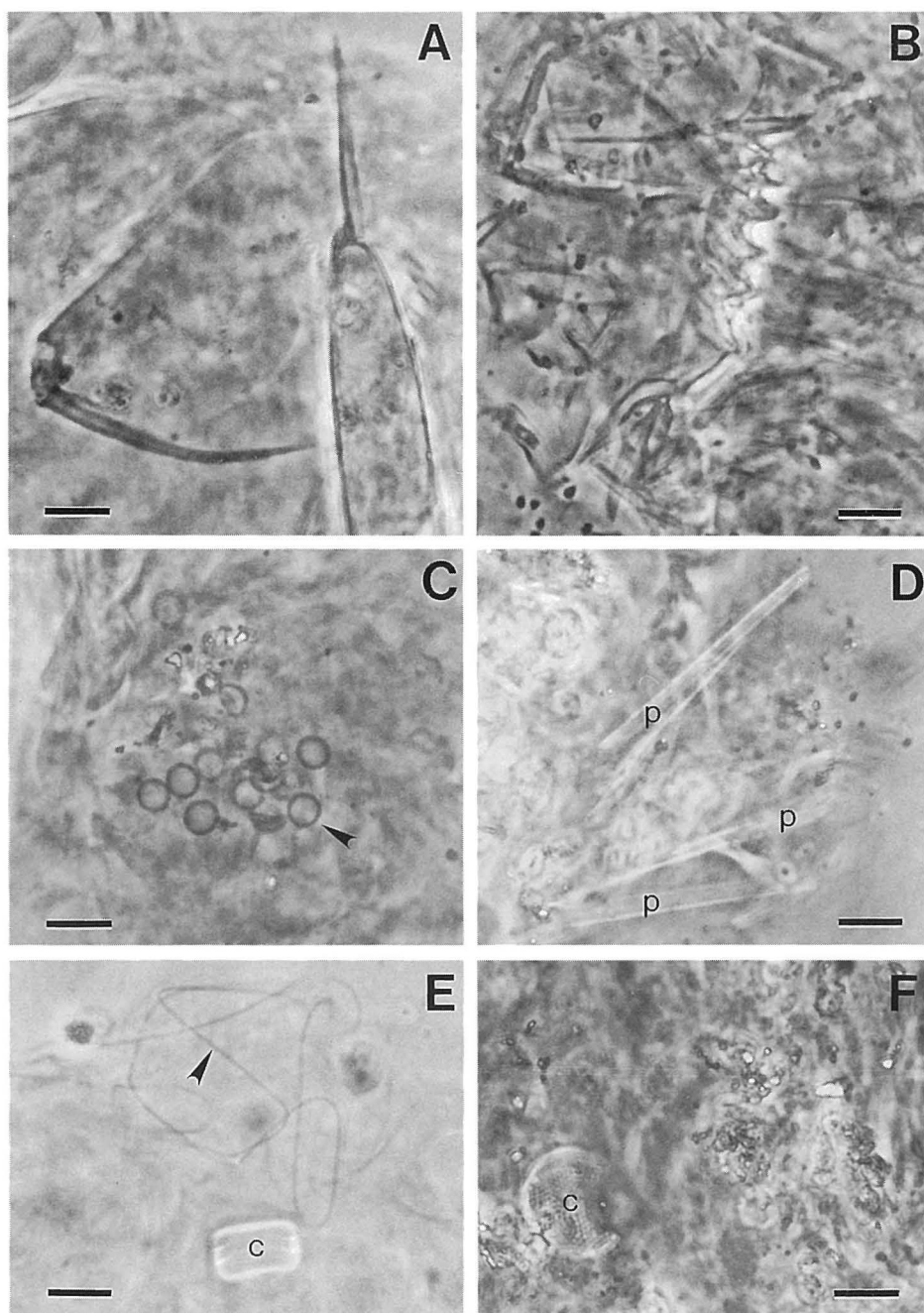


Fig. 4. Gut contents of *Oncaea* species. A, maxilliped and leg of copepodids, *O. venusta* f. *typica*, female, day, 0–50 m; B, calanoid mandible, *O. venusta* f. *typica*, female, night, 0–50 m; C, nematocysts (arrowed), *O. venusta* f. *venella*, female, night, 0–50 m; D, pennate diatoms (p), *O. venusta* f. *typica*, female, day, 0–50 m; E, centric diatom (c) and fibers of the incumbent filter of an appendicularian house (arrowed), *O. conifera*, female, night, 0–50 m; F, centric diatom (c) and unidentified minute particles, *O. media* f. *major*, female, day, 0–50 m. Scale bars = 10 μ m (A–F).

Table 2. Frequency of occurrence of appendicularian houses in guts of *Oncaea*.

| Species | Sex | No. of individuals examined | Frequency of occurrence of appendicularian houses (%) |
|-------------------------------------|-----|-----------------------------|---|
| <i>O. venusta</i> f. <i>typica</i> | ♀ | 40 | 82.5 |
| | ♂ | 39 | 28.2 |
| <i>O. conifera</i> | ♀ | 38 | 68.4 |
| | ♂ | 27 | 59.3 |
| <i>O. mediterranea</i> | ♀ | 48 | 60.4 |
| | ♂ | 38 | 42.1 |
| <i>O. venusta</i> f. <i>venella</i> | ♀ | 34 | 64.7 |
| | ♂ | 39 | 48.7 |
| <i>O. clevei</i> | ♀ | 35 | 68.6 |
| | ♂ | 9 | 33.3 |
| <i>O. media</i> f. <i>major</i> | ♀ | 13 | 100.0 |
| <i>O. umerus</i> | ♀ | 38 | 60.5 |
| <i>O. minuta</i> | ♀ | 53 | 50.9 |
| <i>O. hawaii</i> | ♀ | 8 | 37.5 |
| <i>O. media</i> f. <i>minor</i> | ♀ | 39 | 53.9 |
| | ♂ | 47 | 42.6 |
| <i>O. dentipes</i> | ♀ | 26 | 23.1 |

Sporozoans and parasitic flagellates were rarely found in the guts of *O. venusta* f. *typica*, *O. venusta* f. *venella*, *O. mediterranea*, *O. clevei* and *O. media* f. *major*.

Frequency of occurrence of each item in guts

The frequency of occurrence of food items found in the guts of the 9 species and 4 forms of *Oncaea* are outlined in Tables 2 and 3. Appendicularian houses were detected in all species (Table 2) with a frequency range of 23.1–100.0% (mean 54.4%, n=17). On the average, females showed a higher frequency of the occurrence of appendicularian houses in the guts (mean 61.0%, n=11) than males (mean 42.4%, n=6); the most prominent sexual difference occurred in *O. venusta* f. *typica* and *O. clevei* (Table 2). The frequencies of occurrences of the incurrent filter fibers (IF) and packed house membranes (HM) of appendicularians in the guts are shown separately for each time and depth in Table 3. Although appendicularian house membranes were usually accompanied with incurrent filter fibers in the guts, occasionally either one was detected singly. The occurrence of appendicularian houses in the guts did not correlate with time or depth in any of the species examined (Table 3). The only exception was in the vertically migrating *O. conifera* females, which had a much higher frequency of appendicularian house occurrence in their guts during the night in the epipelagic zone (94%) compared to their daytime residence in the mesopelagic zone (20 or 40%). This is a statistically significant difference (χ^2 -test, $P < 0.01$).

Copepodids and copepod nauplii (CO) only occurred in the guts of larger species (>0.7 mm), being present in the guts of up to 40–45% of female *O. venusta* f. *typica* (0–50 m depth) and in 80% of *O. conifera* females at night (100–150 m depth). Radiolarians (RA) and cnidarian nematocysts (NC) were rarely detected in the guts excepting very high occurrences (60%) of radiolarians in *O. conifera* (female, day, 100–150 m). Unidentified remains (UM), consisting mainly of minute

Table 3. Frequency of occurrence of items detected in guts of *Oncaea* species. AH: Appendicularian houses identified by either incurrent filter fibers or packed translucent matter; IF: fibers of incurrent filter of appendicularian houses; HM: appendicularian house membrane with incurrent filter fibers not contained (only packed translucent matter); DI: diatoms; DF: dinoflagellates; SF: silicoflagellates; CO: copepodids & copepod nauplii; CR: unidentified crustaceans; RA: radiolarians; NC: cnidarian nematocysts; CH: chaetognaths; UM: unidentified remains; EG: empty gut.

| Species | Sex | Time | Depth (m) | Frequency of occurrence of items (%) | | | | | | | | | | | | | |
|------------------------------|-------|-------|--------------|--------------------------------------|----------|-------|-------|------|------|------|------|------|------|------|-------|------|------|
| | | | | Total | AH IF | HM | DI | DF | SF | CO | CR | RA | NC | CH | UM | EG | |
| <i>O. venusta f. typica</i> | ♀ | Day | 0-50 | 90.0 | 55.0 | 70.0 | 95.0 | 10.0 | 0.0 | 45.0 | 20.0 | 10.0 | 10.0 | 0.0 | 100.0 | 0.0 | |
| | | Night | 0-50 | 75.0 | 60.0 | 75.0 | 90.0 | 15.0 | 10.0 | 40.0 | 25.0 | 5.0 | 0.0 | 5.0 | 100.0 | 0.0 | |
| | ♂ | Day | 0-50 | 15.0 | 15.0 | 10.0 | 20.0 | 5.0 | 0.0 | 0.0 | 0.0 | 5.0 | 0.0 | 5.0 | 0.0 | 35.0 | 55.0 |
| | | Night | 0-50 | 42.1 | 21.1 | 31.6 | 68.4 | 5.3 | 0.0 | 0.0 | 31.6 | 0.0 | 5.3 | 0.0 | 84.2 | 15.8 | |
| <i>O. conifera</i> | ♀ | Day | 100-150 | 100.0 | 60.0 | 100.0 | 100.0 | 0.0 | 0.0 | 80.0 | 20.0 | 60.0 | 0.0 | 0.0 | 100.0 | 0.0 | |
| | | | 150-200 | 40.0 | 20.0 | 40.0 | 60.0 | 0.0 | 20.0 | 0.0 | 20.0 | 0.0 | 20.0 | 0.0 | 60.0 | 40.0 | |
| | | | 200-250 | 20.0 | 10.0 | 10.0 | 30.0 | 0.0 | 0.0 | 0.0 | 10.0 | 0.0 | 0.0 | 0.0 | 50.0 | 50.0 | |
| | ♂ | Night | 0-50 | 94.4 | 61.1 | 77.8 | 100.0 | 27.8 | 0.0 | 11.1 | 33.3 | 5.6 | 5.6 | 0.0 | 100.0 | 0.0 | |
| | | Day | 50-100 | 70.0 | 0.0 | 70.0 | 70.0 | 10.0 | 0.0 | 0.0 | 0.0 | 0.0 | 0.0 | 0.0 | 100.0 | 0.0 | |
| | | Night | 0-50 | 52.9 | 35.3 | 35.3 | 47.0 | 0.0 | 0.0 | 0.0 | 0.0 | 5.9 | 0.0 | 0.0 | 70.6 | 23.5 | |
| <i>O. mediterranea</i> | ♀ | Day | 50-100 | 66.7 | 44.4 | 55.6 | 66.7 | 5.5 | 0.0 | 0.0 | 0.0 | 5.5 | 0.0 | 0.0 | 94.4 | 5.5 | |
| | | | 200-250 | 40.0 | 30.0 | 10.0 | 30.0 | 0.0 | 0.0 | 0.0 | 0.0 | 0.0 | 0.0 | 0.0 | 80.0 | 20.0 | |
| | ♂ | Night | 0-50 | 65.0 | 35.0 | 50.0 | 85.0 | 25.0 | 0.0 | 0.0 | 10.0 | 0.0 | 0.0 | 0.0 | 85.0 | 15.0 | |
| | | Day | 50-100 | 42.1 | 31.6 | 21.1 | 42.1 | 0.0 | 0.0 | 0.0 | 5.3 | 0.0 | 0.0 | 0.0 | 84.2 | 15.8 | |
| <i>O. venusta f. venella</i> | ♀ | Day | 0-50 | 75.0 | 40.0 | 75.0 | 85.0 | 5.0 | 5.0 | 20.0 | 15.0 | 10.0 | 0.0 | 0.0 | 85.0 | 10.0 | |
| | | Night | 0-50 | 50.0 | 28.6 | 50.0 | 92.9 | 7.1 | 0.0 | 14.3 | 7.1 | 14.3 | 7.1 | 0.0 | 92.8 | 7.1 | |
| | ♂ | Day | 0-50 | 31.6 | 0.0 | 31.6 | 47.4 | 0.0 | 0.0 | 0.0 | 0.0 | 0.0 | 0.0 | 0.0 | 73.7 | 26.3 | |
| | | Night | 0-50 | 65.0 | 40.0 | 30.0 | 35.0 | 0.0 | 0.0 | 0.0 | 5.0 | 0.0 | 0.0 | 0.0 | 80.0 | 20.0 | |
| <i>O. clevei</i> | ♀ | Day | 0-50 | 73.3 | 53.3 | 60.0 | 73.3 | 0.0 | 0.0 | 13.3 | 13.3 | 0.0 | 0.0 | 0.0 | 93.3 | 6.7 | |
| | Night | 0-50 | 65.0 | 30.0 | 50.0 | 60.0 | 5.0 | 0.0 | 0.0 | 10.0 | 0.0 | 0.0 | 0.0 | 90.0 | 10.0 | | |
| <i>O. media f. major</i> | ♀ | Day | 0-50 | 33.3 | 11.1 | 33.3 | 44.4 | 0.0 | 0.0 | 0.0 | 0.0 | 0.0 | 0.0 | 0.0 | 66.7 | 11.1 | |
| | | Night | 0-50 | 100.0 | 38.5 | 100.0 | 84.6 | 15.4 | 0.0 | 7.7 | 46.2 | 15.4 | 7.7 | 0.0 | 100.0 | 0.0 | |
| <i>O. umerus</i> | ♀ | Day | 50-100 | 65.0 | 20.0 | 60.0 | 60.0 | 5.0 | 0.0 | 0.0 | 0.0 | 5.0 | 5.0 | 0.0 | 95.0 | 5.0 | |
| | | Night | 0-50 | 55.6 | 11.1 | 55.6 | 77.8 | 0.0 | 0.0 | 0.0 | 11.1 | 5.6 | 0.0 | 0.0 | 100.0 | 0.0 | |
| <i>O. minuta</i> | ♀ | Day | 0-50 | 55.6 | 33.3 | 55.6 | 55.6 | 0.0 | 0.0 | 0.0 | 0.0 | 0.0 | 0.0 | 0.0 | 77.8 | 22.2 | |
| | | | 50-100 | 50.0 | 25.0 | 25.0 | 50.0 | 0.0 | 0.0 | 0.0 | 12.5 | 0.0 | 0.0 | 0.0 | 87.5 | 12.5 | |
| | | Night | 0-50 | 38.9 | 16.7 | 33.3 | 55.6 | 0.0 | 0.0 | 0.0 | 0.0 | 0.0 | 0.0 | 0.0 | 77.8 | 22.2 | |
| <i>O. hawaii</i> | ♀ | | 200-250 | 61.1 | 22.2 | 55.6 | 66.7 | 0.0 | 0.0 | 5.6 | 16.7 | 0.0 | 0.0 | 0.0 | 94.4 | 5.6 | |
| | | Night | 200-250 | 37.5 | 0.0 | 37.5 | 50.0 | 0.0 | 0.0 | 0.0 | 12.5 | 0.0 | 0.0 | 0.0 | 75.0 | 25.0 | |
| | | Day | 0-50 | 70.0 | 25.0 | 70.0 | 40.0 | 0.0 | 0.0 | 0.0 | 5.0 | 0.0 | 5.0 | 0.0 | 80.0 | 20.0 | |
| <i>O. media f. minor</i> | ♀ | Night | 0-50 | 36.8 | 5.3 | 36.8 | 42.1 | 0.0 | 0.0 | 0.0 | 0.0 | 0.0 | 0.0 | 0.0 | 57.9 | 31.6 | |
| | | Day | 0-50 | 37.5 | 0.0 | 37.5 | 25.0 | 0.0 | 0.0 | 0.0 | 0.0 | 0.0 | 0.0 | 0.0 | 62.5 | 37.5 | |
| | ♂ | | 50-100 | 55.0 | 20.0 | 45.0 | 35.0 | 0.0 | 0.0 | 0.0 | 0.0 | 0.0 | 5.0 | 0.0 | 65.0 | 35.0 | |
| | | Night | 0-50 | 31.6 | 10.5 | 26.3 | 15.7 | 0.0 | 0.0 | 0.0 | 0.0 | 0.0 | 0.0 | 0.0 | 63.2 | 36.8 | |
| <i>O. dentipes</i> | ♀ | Day | 50-100 | 15.4 | 7.7 | 15.4 | 15.4 | 0.0 | 0.0 | 0.0 | 0.0 | 0.0 | 0.0 | 0.0 | 76.9 | 23.1 | |
| | | Night | 50-100 | 30.8 | 7.7 | 23.1 | 46.2 | 0.0 | 0.0 | 0.0 | 0.0 | 0.0 | 0.0 | 0.0 | 84.6 | 15.4 | |

Table 4. Numerical abundance of all *Oncaea* spp. and appendicularians during daytime in the upper 250 m of the central Red Sea in February 1981 (adapted from Böttger 1985). X: average number of individuals m^{-3} , based on 3 sampling series; R: range.

| Depth(m) | <i>Oncaea</i> spp. | | Appendicularians | |
|----------|--------------------|---------|------------------|---------|
| | X | R | X | R |
| 0-50 | 480 | 290-640 | 520 | 400-740 |
| 50-100 | 330 | 170-440 | 240 | 130-350 |
| 100-150 | 200 | 100-310 | 120 | 30-200 |
| 150-200 | 100 | 81-130 | 8.3 | 4.2-12 |
| 200-250 | 110 | 92-140 | 1.2 | 0.4-2.6 |

particles (see Figures 1A-D, 4F), were the most frequent items found in the guts (mean 81.1%, $n=37$). Identification of these remains was impossible using light microscopy. Less than about half the individuals of any given species or sex had empty guts (Table 3).

Discussion

Zooplankton composition and vertical distribution of Oncaea species in the central Red Sea

Copepods (including nauplii) were the dominant zooplankton fraction in the central Red Sea during February, 1981, accounting on average for 82% of total zooplankton density by number in the upper 450 m of the water column (Böttger 1985). Appendicularians ranked next to copepods, accounting for about 8% of the total zooplankton in that layer. The species composition of appendicularians was not evaluated from the present material, and information in the literature on their community structure in the central Red Sea is scarce. According to Lohmann (1931) *Oikopleura longicauda* (Vogt) is the most abundant oikopleurid species, followed in number by *O. fusiformis* Fol and *O. rufescence* Fol. *Fritillaria* species seem to be rare. Similar results were reported by Fenaux & Godeaux (1970) and Vaissire & Seguin (1984) from the Gulf of Aqaba, in the northernmost part of the Red Sea. Among the copepodids, oncaeids comprised 25% of the total standing stock in the upper 450 m (Böttger 1985). Maximum concentrations of oncaeids and appendicularians were always found in the upper 50 m, showing average values of ca. 500 ind. m^{-3} for both taxa (Table 4). Below 150 m depth, the density of appendicularians decreased substantially, while the corresponding density gradient for oncaeids was less pronounced. This pattern is seen in Table 4 where the 9 species and 4 forms of *Oncaea* that were used for the gut content analysis are combined. Most of the species are epipelagic, occurring mainly in the upper 100 m.

Oncaea media f. *minor* was numerically dominant in that layer, accounting for 15% of the total number of oncaeids (Böttger-Schnack 1990b). Females of this species also had a secondary concentration peak in the mesopelagic zone. Some of the lower epipelagic species or sexes, such as the males of *O. conifera* and both sexes of *O. mediterranea* showed diel vertical migration and concentrated in the upper 50 m during the night (Table 1). The most extended diel vertical migration was

found for females of *O. conifera*, which migrated from their daytime depth in the upper mesopelagic zone (200–300 m) up to the upper epipelagic zone (0–50 m) during the night. For smaller mesopelagic species such as *O. hawaii* and *O. minuta*, the vertical migration pattern was not investigated for the winter material. However, investigations in the same area during autumn indicated that they undertook no or even reverse diel vertical migration (Böttger-Schnack 1990b).

Feeding habits of Oncaea

The feeding ecology of pelagic poecilostomatoids is poorly understood compared with that of calanoid copepods. Direct observations of their feeding behavior suggests they are loosely associated with other pelagic zooplankters or detrital matter (Nishimura 1960, Heron 1973, Alldredge 1972, 1976, Landry & Fagerness 1988, Ohtsuka & Kubo 1991, Ohtsuka et al. 1993, Steinberg et al. 1994). The association of relatively large species of *Oncaea* (ca. 1 mm in body length) with both discarded and occupied appendicularian houses is commonly observed in subtropical and tropical waters (Alldredge 1972, 1976, Ohtsuka & Kubo 1991, Ohtsuka et al. 1993, Steinberg et al. 1994). The present study reveals that small species of *Oncaea* of less than 0.5 mm in body length also utilize appendicularian houses as a food source. In addition, Lampitt et al. (1993) have found that *Oncaea conifera* consumes amorphous marine snow. As suggested by Huys & Boxshall (1991), both small and large species of *Oncaea* seem to need relatively large-sized detrital matter such as appendicularian houses or other marine snow as food. The mouthpart structure and feeding behavior of *Oncaea* also support this possibility: chelate maxillipeds are used for the capture and grasping of relatively large food items (Ohtsuka & Kubo 1991); antennae are also used for clinging to appendicularian houses (Ohtsuka et al. 1993); maxillules and maxillae are rather reduced (see Giesbrecht 1892, plate 47), and seem to play a role only in the scraping of food. Nanophytoplankters (<10 μm) found in the guts of *Oncaea* spp. (Turner 1986, present study) were possibly derived indirectly from such large detrital matter. Although the feeding habits of related poecilostomatoids such as *Lubbockia* and *Paralubbockia* are unknown, they may be associated with other zooplankters or relatively large detrital matter because their mouthpart structures are similar to those of *Oncaea* (cf. Boxshall 1977).

Ohtsuka et al. (1993) speculated that since species of *Oncaea* have similar mouthparts, irrespective of size, they may employ similar feeding behavior or habits. The present study also supports this inference because of the absence of obvious differences in the gut contents among the species examined, with the exception of stronger carnivory on copepodids and appendicularians in the larger species (Ohtsuka & Kubo 1991, present study). It is uncertain in the present study whether these larger species catch living copepodids or feed on their carcasses and/or exuviae. However, the almost intact bodies of copepodids detected in some guts point to their direct predation on living individuals.

The present study strongly supports the association of *Oncaea* with appendicularian houses in the epipelagic and upper mesopelagic zones. Discarded

appendicularian houses may be an important constituent of detritus and a food source for copepods in the mesopelagic zone, as suggested by Steinberg et al. (1994). Large mesopelagic species such as *O. conifera*, with a strong vertical migration pattern, exhibited a corresponding daily feeding rhythm, with the highest feeding intensity during the night in the upper 50 m, where the maximum concentration of appendicularians was found. According to Weikert (1987), chlorophyll *a* was almost confined to the upper 150 m with the highest peak at a depth of ca. 40 m at the same station in February, 1981. The restricted vertical distribution of appendicularians in the upper 150 m (see Table 4) was probably related to this concentration gradient of chlorophyll *a*. Smaller and non-migrating mesopelagic species of *Oncaea* such as *O. tregoubovi* may be associated with mesopelagic appendicularians such as *Bathochordaeus* (Steinberg et al. 1994, Steinberg 1995) or sinking appendicularian houses from the upper zones. Since the sinking rate of the discarded appendicularian houses of *Oikopleura longicauda* was reported as $189 \pm 31 \text{ m d}^{-1}$ in the laboratory (Taguchi 1982), the discarded houses of epipelagic oikopleurids presumably reach the mesopelagic zones, becoming potential food for mesopelagic copepods.

The quality of the packed mucus and fibers in oncaeid guts in this study was quite similar to that found in the guts of *Scolecithrix danae* and *Oncaea* spp. which were observed to feed on appendicularian houses (Ohtsuka & Kubo 1991). Based on visual observations Alldredge (1972) and Ohtsuka et al. (1993) reported that *Oncaea* preferred food-concentrating filters to incurrent filters as a feeding site. The results from the present study give no clear evidence whether *Oncaea* fed directly and preferentially on the food-concentrating filters. Flood (1991) found rod-shaped clusters of globular granules (ca. $5 \times 20 \mu\text{m}$ in size) on the external walls of the house membrane of *Oikopleura labradoriensis*, but no trace of such structures was found in the packed mucus from the guts of *Oncaea* in the present study. Appendicularian houses detected in the guts of the leptocephalus larvae of eels were entirely stained in reddish purple with a metachromatic dye (Mochioka personal communication), while those of *Oncaea* spp. were only partly stained. This difference may have been caused by long-term preservation of the specimens of *Oncaea* and/or by the occurrence of some kind of digestive chemical reaction in the guts of *Oncaea*. Fibers in the copepod guts were identified as those of the incurrent filter of oikopleurids based mainly on their diameters of ca. 0.5–1.0 μm . Fibers of the food-concentrating and pharyngeal filters are much finer than those of incurrent fibers, ranging from 5 to 50 nm and from 97 to 330 nm in diameter, respectively (Deibel et al. 1985, Deibel & Powell 1987, Flood 1991). Although the net-like structures of incurrent filters (see Flood 1991, Fig. 4h) were not clearly found in the copepod guts in this study, our previous scanning electron microscopic observations revealed that parts of these entangled fibers with similar diameters do indeed exhibit mesh-like structures (Ohtsuka & Kubo 1991). Since the mandibular blade of *Oncaea* appears to be suited to the cutting and licking up of food rather than to grinding (cf. Giesbrecht 1892, Boxshall 1977), the rectangular structures of the incurrent filters of the houses might be torn during the feeding of *Oncaea* on

food attached to the filters.

Species of *Oncaea* are reported to be consumed by *Noctiluca* (Enomoto 1956), copepods (Fleminger & Hulsemann 1974, Ohtsuka & Onbé 1991, Steinberg 1995), decapods (Foxton & Roe 1974), chaetognaths (Sullivan 1980), and fishes (Odate 1977, Clark 1980). Foxton & Roe (1974) speculated that mesopelagic decapods indirectly ingest *Oncaea* through its larger "hosts" (conceivably appendicularians). Such indirect predation on *Oncaea* is also suggested in appendicularian house-eating calanoids such as *Scolecithrix danae* (Ohtsuka & Kubo 1991) and *Scopalatum vorax* (Steinberg 1995). The oceanic calanoid copepod *Pontellina* (family Pontellidae) exhibits a strong selectivity for *Oncaea* (Fleminger & Hulsemann 1974, Ohtsuka unpublished data). There was, however, no evidence of the indirect predation of *Pontellina* on *Oncaea* via appendicularian houses. Selective carnivory (e.g., Ohtsuka & Onbé 1989), opportunistic gorging (e.g., Boxshall 1989) and detritivory (e.g., Ohtsuka et al. 1993, Steinberg et al. 1994, Steinberg 1995) are more conspicuous in copepods occurring in oligotrophic regions or the deep seas.

The role of the genus *Oncaea* in marine ecosystems is considerably different from that of suspension-feeding calanoid copepods through: (1) effective utilization of nanoplankters through appendicularian houses (Alldredge 1972, Turner 1986, present study); (2) the excretion of fecal pellets, possibly containing mucopolysaccharides (Alldredge 1976) or their derivatives originating from house membranes, which may differ in chemical composition from those of particle-feeding calanoids; (3) the likely ability to feed on small cells due to the extremely small size of the adults of some species of ca. 0.2–0.3 mm in body length (Böttger-Schnack 1988, Böttger-Schnack et al. 1989). These characteristics presumably influence grazing on phytoplankters, the downward flux of particulate organic matter, and prey-predator relationships between zooplankters and fishes. Steinberg (1995) proposed that copepods associated with appendicularian houses are decomposers or remineralizers. Since mesopelagic zones are dominated by *Oncaea* species, amounting numerically to 60–80 % of all copepods present (Böttger-Schnack 1994), the distribution and feeding ecology of *Oncaea* are of paramount importance in order to understand trophodynamics and energy transfer in the sea.

Acknowledgments

We express our sincere thanks to Drs D. Deibel, P. R. Flood and D. K. Steinberg for their critical reading of an earlier draft. We are indebted to Dr. N. Mochioka for his kind advice about the staining method for the mucopolysaccharides of appendicularian houses. The present study was partially supported by a grant from the Ministry of Education, Sciences, Sports and Culture, Japan, awarded to SO (No. 06839019) and by a Deutsche Forschungsgemeinschaft grant We 695/12 to H. Weikert (RBS).

Literature Cited

- Allredge, A. L., 1972. Abandoned larvacean houses: a unique food source in the pelagic environment. *Science*, **177**: 885–887.
- Allredge, A. L., 1976. Discarded appendicularian houses as sources of food, surface habitats, and particulate organic matter in planktonic environments. *Limnol. Oceanogr.*, **24**: 855–866.
- Allredge, A. L., 1977. House morphology and mechanisms of feeding in the Oikopleuridae (Tunicate, Appendicularia). *J. Zool., Lond.*, **181**: 175–188.
- Böttger R., 1985. *Untersuchungen zur Verteilung der kleinen Metazoa im Plankton des Roten Meeres, unter besonderer Berücksichtigung cyclopoider und harpacticoider Copepoden*. Ph. D. Dissertation, Universität Hamburg, 248pp.
- Böttger-Schnack, R., 1987. The vertical distribution of micro- and small mesozooplankton in the central Red Sea. *Biol. Oceanogr.*, **4**: 383–402.
- Böttger-Schnack, R., 1988. Observations on the taxonomic composition and vertical distribution of cyclopoid copepods in the central Red Sea. *Hydrobiologia*, **167/168**: 311–318.
- Böttger-Schnack, R., 1990a. Community structure and vertical distribution of cyclopoid copepods in the Red Sea. I. Central Red Sea, autumn 1980. *Mar. Biol.*, **106**: 473–485.
- Böttger-Schnack, R., 1990b. Community structure and vertical distribution of cyclopoid copepods in the Red Sea. II. Aspects of seasonal and regional differences. *Mar. Biol.*, **106**: 487–501.
- Böttger-Schnack, R., 1994. The microcopepod fauna in the eastern Mediterranean and Arabian Seas: a comparison with the Red Sea fauna. *Hydrobiologia*, **292/293**: 271–282.
- Böttger-Schnack, R., 1992. Community structure and vertical distribution of cyclopoid and poecilostomatoid copepods in the Red Sea. III. Re-evaluation for separating a new species of *Oncaea*. *Mar. Ecol. Prog. Ser.*, **80**: 301–304.
- Böttger-Schnack, R., 1995. Summer distribution of micro- and small mesozooplankton in the Red Sea and Gulf of Aden, with special reference to non-calanoid copepods. *Mar. Ecol. Prog. Ser.*, **118**: 81–102.
- Böttger-Schnack, R., 1996. Vertical structure of small metazoan plankton, especially non-calanoid copepods. I. Deep Arabian Sea. *J. Plankton Res.*, **18**: 1073–1101.
- Böttger-Schnack, R., in press. Vertical structure of small metazoan plankton, especially non-calanoid copepods. II. Deep Eastern Mediterranean (Levantine Sea). *Oceanologica Acta*.
- Böttger-Schnack, R. & G. A. Boxshall, 1990. Two new *Oncaea* species (Copepoda: Poecilostomatoida) from the Red Sea. *J. Plankton Res.*, **12**: 861–871.
- Böttger-Schnack, R., D. Schnack & H. Weikert, 1989. Biological observations on small cyclopoid copepods in the Red Sea. *J. Plankton Res.*, **11**: 1089–1101.
- Boxshall, G. A., 1977. The planktonic copepods of the northeastern Atlantic Ocean: some taxonomic observations on Oncaeidae (Cyclopoida). *Bull. Br. Mus. nat. Hist. (Zool.)*, **31**: 103–155.
- Boxshall, G. A., 1989. Colonization of inland marine caves by misophrioid copepods. *J. Zool.*, **219**: 521–528.
- Chae, J. H. & S. Nishida, 1995. Vertical distribution and diel migration in the iridescent copepods of the family Sapphirinidae: a unique example of reverse migration? *Mar. Ecol. Prog. Ser.*, **119**: 111–124.

- Clark, T. A., 1980. Diets of fourteen species of vertically migrating mesopelagic fishes in Hawaiian waters. *Fish. Bull.*, **78**: 619-640.
- Deibel, D., M.-L. Dickson & C. V. L. Powell, 1985. Ultrastructure of the mucous feeding filter of the house of the appendicularian *Oikopleura vanhoffeni*. *Mar. Ecol. Prog. Ser.*, **27**: 79-86.
- Deibel, D. & C. V. L. Powell, 1987. Ultrastructure of the pharyngeal filter of the appendicularian *Oikopleura vanhoffeni*: implications for particle size selection and fluid mechanism. *Mar. Ecol. Prog. Ser.*, **35**: 243-259.
- Enomoto, Y., 1956. On the occurrence and the food of *Noctiluca scintillans* (Macarteny) in the waters adjacent to the west coast of Kyushu, with special reference to the possibility of the damage caused to the fish eggs by that plankton. *Bull. Japan Soc. sci. Fish.*, **22**: 82-88.
- Fenaux, R. & J. Godeaux. 1970. Répartition verticale des tuniciers pélagiques au large d'Eilat (Golfe d'Aqaba). *Bull. Soc. Roy. Sci. Liège*, **39**: 200-209.
- Fleminger, A. & K. Hulsemann, 1974. Systematics and distribution of the four sibling species comprising the genus *Pontellina* Dana (Copepoda, Calanoida). *Fish. Bull.*, **72**: 63-120.
- Flood, P. R., 1991. Architecture of, and water circulation and flow rate in, the house of the planktonic tunicate *Oikopleura labradoriensis*. *Mar. Biol.*, **111**: 95-111.
- Foxton, P. & H. S. J. Roe, 1974. Observations on the nocturnal feeding of some mesopelagic decapod Crustacea. *Mar. Biol.*, **28**: 37-49.
- Giesbrecht, W., 1892. Systematik und Faunistik der pelagischen Copepoden des Golfes von Neapel und der angrenzenden Meeresabschnitte. *Fauna und Flora des Golfes von Neapel*, **19**: 1-831.
- Gophen, M. & R. P. Harris, 1981. Visual predation by a marine cyclopoid, *Corycaeus anglicus*. *J. mar. biol. Ass. U.K.*, **61**: 391-399.
- Heron, A. C., 1973. A specialized predator-prey relationship between the copepod *Sapphirina angusta* and the pelagic tunicate *Thalia democratica*. *J. mar. biol. Ass. U. K.*, **53**: 429-435.
- Hopkins, T. L., 1985. Food web of an antarctic midwater ecosystem. *Mar. Biol.*, **89**: 197-212.
- Hopkins, T. L., 1987. Midwater food web in McMurdo Sound, Ross Sea. *Mar. Biol.*, **96**: 93-106.
- Huys, R. & G. A. Boxshall, 1991. *Copepod Evolution*. Ray Soc., London, 468pp.
- Lampitt, R. S., K. F. Wishner, C. M. Turley & M. V. Angel, 1993. Marine snow studies in the Northeast Atlantic Ocean: distribution, composition and role as a food source for migrating plankton. *Mar. Biol.*, **116**: 689-702.
- Landry, M. R. & V. L. Fagerness, 1988. Behavioral and morphological influences on predatory interactions among marine copepods. *Bull. mar. Sci.*, **43**: 509-529.
- Lohmann, H., 1931. Die Appendicularien der Deutschen Tiefsee-Expedition. *Wiss. Ergeb. d. Dt. Tiefsee-Exped. "Valdivia"*, **21**: 1-158.
- Metz, C., 1995. Seasonal variation in the distribution and abundance of *Oithona* and *Oncaea* species (Copepoda, Crustacea) in the southeastern Weddell Sea, Antarctica. *Polar Biol.*, **15**: 187-194.
- Mochioka, N. & M. Iwamizu, 1996. Diet of anguilloid larvae: leptocephali feed selectively on larvacean houses and their fecal pellets. *Mar. Biol.*, **125**: 447-452.
- Nishimura, S., 1960. A preliminary note on the possibility of predation or damage inflicted upon pelagic fish larvae by poecilostomatid copepods. *Ann. Rept. Japan Sea reg. Fish. Res. Lab.*, **6**: 53-56. (In Japanese)
- Odate, K., 1977. On the feeding habits of the Pacific saury, *Cololabis saira* (Brevoort).

- Bull. Tohoku reg. Fish. Res. Lab.*, **38**: 75–88 (In Japanese with English abstract)
- Ohtsuka, S. & N. Kubo, 1991. Larvaceans and their houses as important food for some pelagic copepods. *Bull. Plankton Soc. Japan*, Spec. Vol.: 535–551.
- Ohtsuka, S., M. Okada, N. Kubo & K. Gushima, 1993. Attachment and feeding of pelagic copepods on larvacean houses. *J. oceanogr. Soc. Japan*, **48**: 115–120.
- Ohtsuka, S. & T. Onbé, 1989. Evidence of selective feeding on larvaceans by the pelagic copepod *Candacia bipinnata* (Calanoida: Candaciidae). *J. Plankton Res.*, **11**: 869–872.
- Ohtsuka, S. & T. Onbé, 1991. Relationship between mouthpart structures and in situ feeding habits of species of the family Pontellidae (Copepoda). *Mar. Biol.*, **111**: 213–225.
- Palomares, R. G. & G. R. Vera, 1995. Predation upon larvae of the Pacific sardine *Sardinops sagax* by cyclopoid copepods. *J. crustacean Biol.*, **15**: 196–201.
- Pasternak, A. F., 1984. Feeding of copepods of the genus *Oncaea* (Cyclopoida) in the southeastern Pacific Ocean. *Oceanology*, **24**: 609–612.
- Riemann, F., 1989. Gelatinous phytoplankton detritus aggregates on the Atlantic deep-sea bed. *Mar. Biol.*, **100**: 533–539.
- Steinberg, D. K., 1995. Diet of copepods (*Scopalatum vorax*) associated with mesopelagic detritus (giant larvacean houses) in Monterey Bay, California. *Mar. Biol.*, **122**: 571–584.
- Steinberg, D. K., M. V. Silver, C. H. Pilskaln & J. B. Paduan, 1994. Midwater zooplankton communities on pelagic detritus (giant larvacean houses) in Monterey Bay, California. *Limnol. Oceanogr.*, **39**: 1606–1620.
- Sullivan, B. K., 1980. In situ feeding behavior of *Sagitta elegans* and *Eukrohnia hamata* (Chaetognatha) in relation to the vertical distribution and abundance of prey at ocean station "P". *Limnol. Oceanogr.*, **25**: 317–326.
- Taguchi, S., 1982. Seasonal study of fecal pellets and discarded houses of Appendicularia in a subtropical inlet, Kaneohe Bay, Hawaii. *Estuar. coast. Shelf Sci.*, **14**: 545–555.
- Turner, J. T., 1986. Zooplankton feeding ecology: contents of fecal pellets of the cyclopoid copepods *Oncaea venusta*, *Corycaeus amazonicus*, *Oithona plumifera*, and *O. simplex* from the northern Gulf of Mexico. *P. S. Z. N. I: Mar. Ecol.*, **7**: 289–302.
- Vaissière, R. & G. Seguin, 1984. Initial observations of the zooplankton micro-distribution on the fringing coral reef at Aqaba (Jordan). *Mar. Biol.*, **83**: 1–11.
- Weikert, H., 1987. Plankton and the pelagic environment, pp. 90–111. In *Red Sea. Key environments* (eds. Edwards, A. J. & S. M. Head). Pergamon Press, Oxford.