



“The best loudspeaker isn’t the one that gives the most.
It’s the one that loses the least.”

John Bowers, Worthing, England, 1966

True sound

The story of Bowers & Wilkins begins with the vision of one man. John Bowers believed that the perfect speaker should be to the ear what a flawless pane of glass is to the eye. It should neither add to nor take away from music, but reveal the true sound of the performance, faithful in every nuance to the original.

This was Bowers’ dream, and he gave it a name: ‘true sound’. It’s a dream we’ve been pursuing ever since.



In pursuit of perfection It's a human characteristic to seek perfection. What keeps the photographer in the darkroom after he's captured the photo? What keeps the musician rehearsing hour upon hour? What drives Bowers & Wilkins in its quest for the ultimate speaker? It's a passion for what we do.

Left: the head of an 800 Series Diamond speaker. Below (from left): Samuel Yirga and Portico Quartet.





Partners in sound In leading recording studios, music that will soon be heard everywhere is heard first through Bowers & Wilkins speakers. Our 800 Series is the professionals' choice, adopted by some of the world's most demanding recording environments including Abbey Road Studios in London and Skywalker Sound in California. So you can depend on our speakers to reproduce your music accurately. Just ask the people who recorded it.

The control room of Studio 1 at Abbey Road Studios, featuring Bowers & Wilkins 800 Diamond speakers.

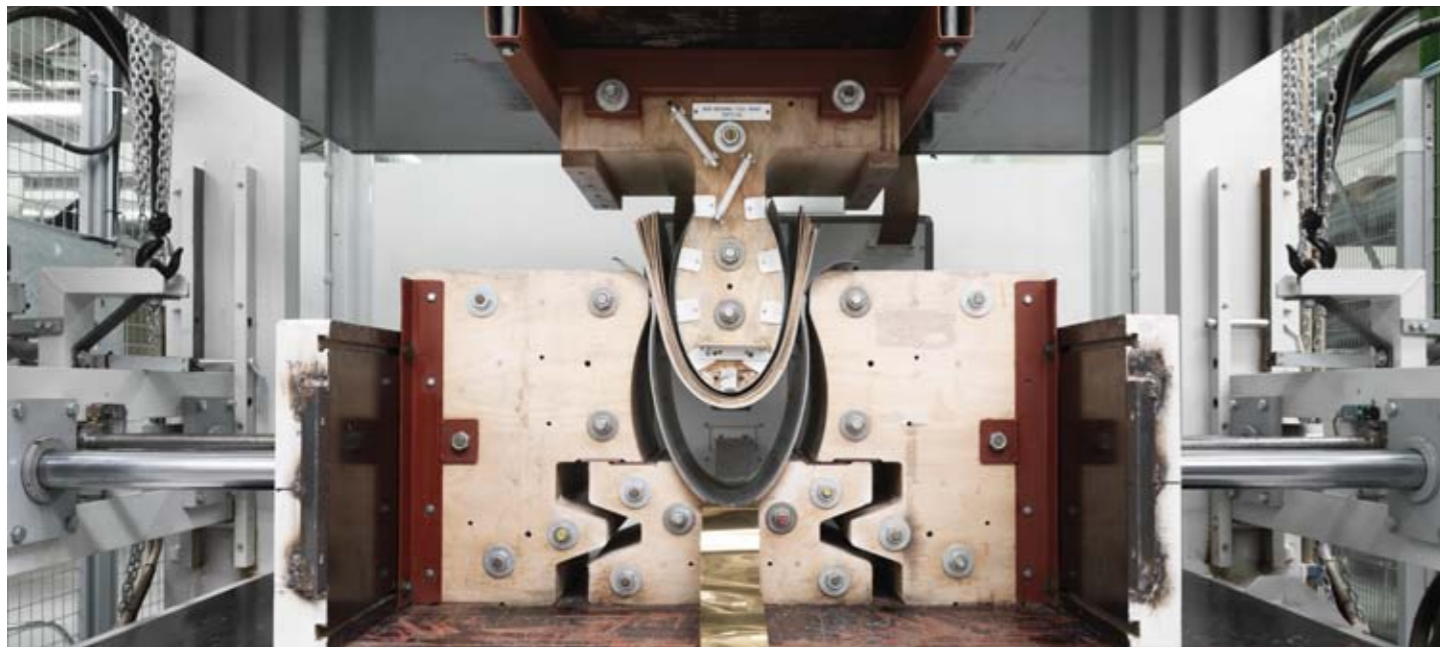




Mothers of invention Continually pushing the boundaries of audio performance demands constant innovation. So in 1981 we founded the Steyning Research Establishment, a research and development unit dedicated solely to advancing our knowledge of acoustic science. Today, Steyning continues to be the source of some of the most important technological innovations in our industry – discoveries that influence how all speakers are made.

Tweeter domes formed from synthetic diamond. Another innovation from the Steyning Research Establishment.





Man meets machine Building a Bowers & Wilkins speaker calls for a fine balance of automated processes, skilled hands and sound human judgement. At our factory in Worthing in the south of England, the cabinet of an 800 Series Diamond loudspeaker is pressed into shape. Meanwhile the speaker's teardrop-shaped tweeter housing is painted with seven coats of lacquer and polished by hand until it's smooth as glass.



Hi-Fi

P12



Headphones

P72



Computer Speakers

P46



Custom Installation

P82



Home Theatre

P50



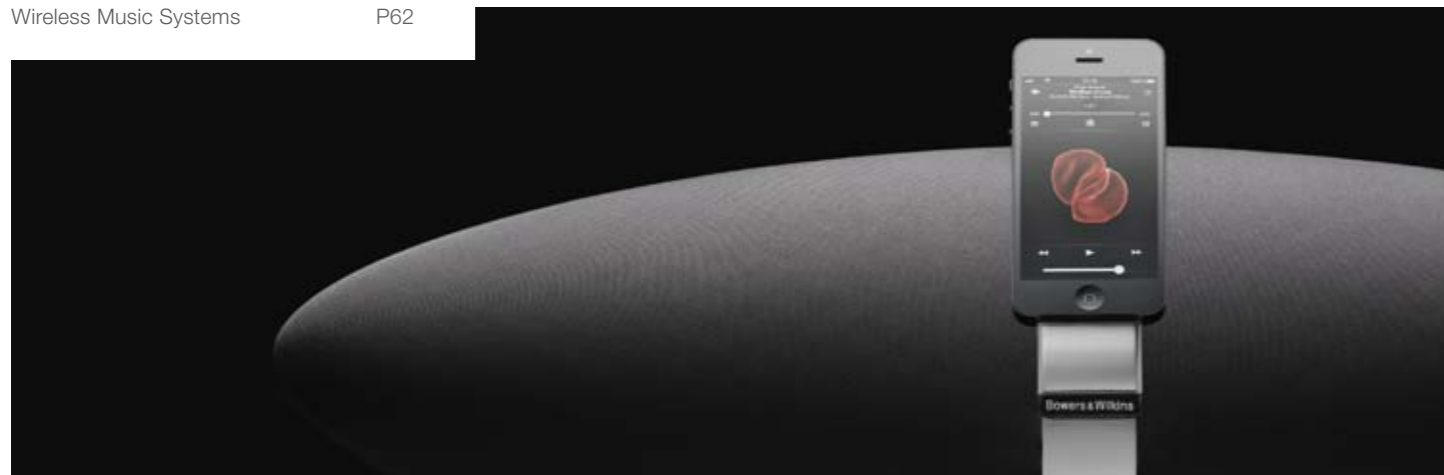
Automotive

P104



Wireless Music Systems

P62



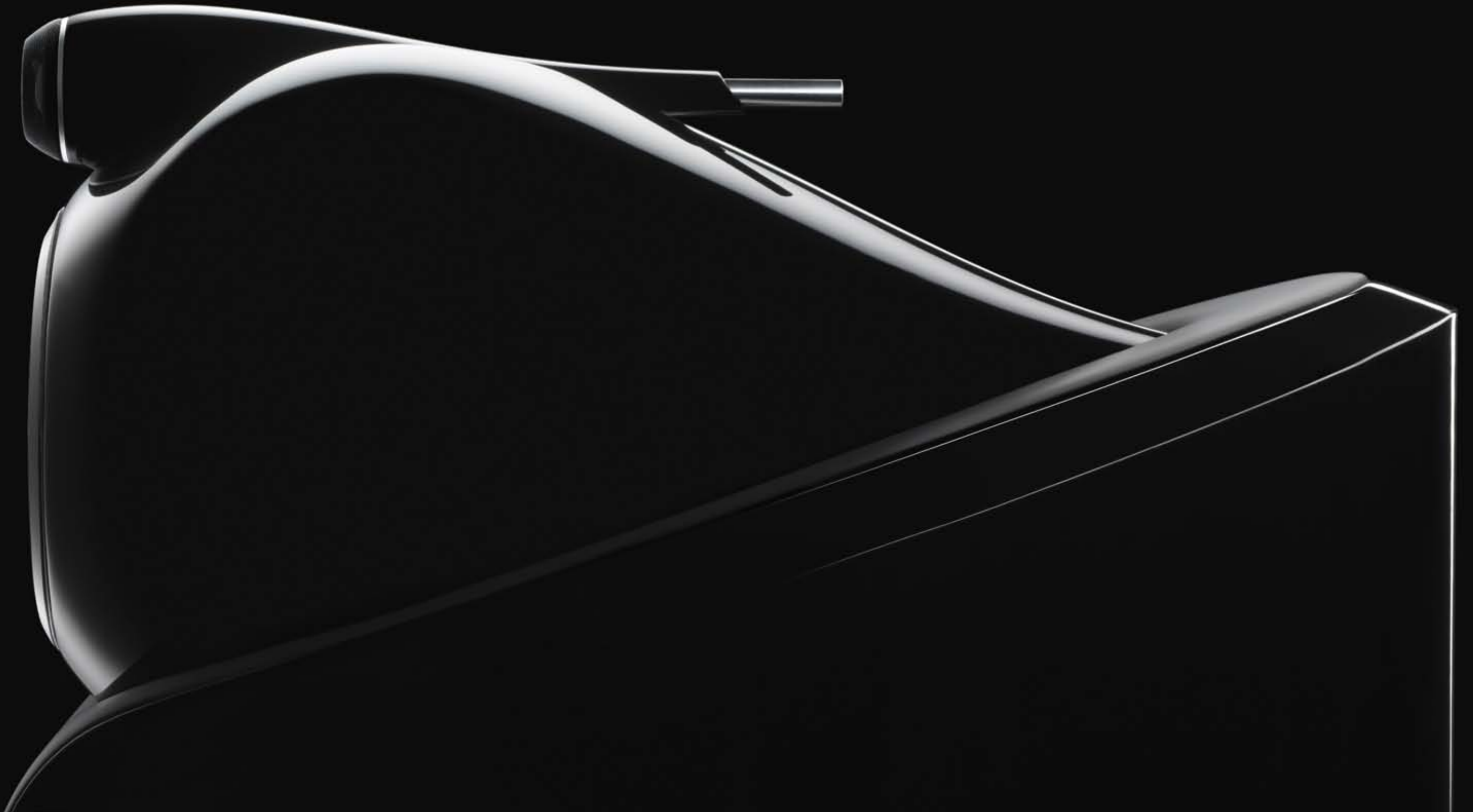
Society of Sound

P110



Hi-Fi

It all comes down to this. Our Hi-Fi speakers are the culmination of more than 50 years of innovation in the field of acoustics. From our most advanced models all the way to our entry-level series, these speakers have expanded the industry's sense of what's possible in audio performance and accuracy. It's the reason you'll find them in world-famous recording studios – not to mention the homes of serious audio fans.





What happens when you give the world's most forward-thinking acoustic engineers an open brief to create, as near as possible, the perfect loudspeaker? The answer is Nautilus™. Over five years of intensive research and development, we challenged every convention, re-examined every principle and reinvented every component. The result? Not just an extraordinary loudspeaker, but an icon of speaker design – one that continues to shape our ideas to this day.



Tapering tubes

Speaker designers have always been faced with the problem of colouration: unwanted sound radiating from the back of drive units, resonating within the cabinet and mixing with the sound from the front. With tapering tubes, we found the solution. Rear sound waves are channelled, absorbed and damped until they virtually disappear.



Spiral enclosure

Rearward sound waves from Nautilus' mighty bass drive unit are channelled away using a tapering tube curled on itself to form a spiral. Our tests showed that sound waves are able to travel through a spiralling tube with no discernible interference or reflection.



When you create something as new and uncompromising as Nautilus, you can't help picking up a few lessons along the way. Today, the innovations and ideas we developed in the making of Nautilus continue to inform the design of every range we have introduced since. From the spiral diffusers in our automotive systems, to the tube-loaded design of our 600 Series tweeters, you'll find traces of Nautilus in everything we do.

The shape of things to come

Early prototypes and tests for Nautilus at the Steyning Research Establishment. The distinctive spiralling shape of the speaker's cabinet enclosure is the result of years of extensive research and development.



The choice of professional recording studios such as Abbey Road, and revered by serious Hi-Fi enthusiasts, the 800 Series Diamond is more than just our flagship reference speaker range. It's the pinnacle of Hi-Fi loudspeaker performance. True sound? You won't come closer than this.



Diamond is a distinguishing feature of the entire 800 Series Diamond range – and for good reason. Thanks to its unique balance of lightness and rigidity, no material on Earth is better suited to making tweeter domes. To create the tweeters for the 800 Series Diamond we use a technique that allows diamond to be grown, like a crystal, in laboratory conditions.



Left: after a diamond dome is formed in a super-heated furnace, it is precision-cut by laser to remove any surface irregularities. **Right:** each dome is rigorously tested and inspected for imperfections.



Crossover

The way a speaker's crossover is constructed speaks volumes about the quality of its mechanical components. What to look for is simplicity. The rule is, the better the design of the drive units, the simpler the design of the crossover can afford to be. And the quality of the 800 Series Diamond drive units is such that we've been able to make the speaker's first-order crossover one of the simplest – and best – we've ever produced.



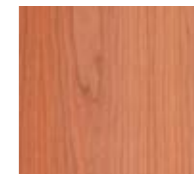
Matrix

You won't find many straight lines in nature – for good reason. Continuous, curving surfaces create stronger structures with the same amount of material. In the 800 Series Diamond, the curving cabinet forms a solid outer shell that shrugs off vibrations and resonance. Add an internal Matrix™ system that braces the structure like the ribs of a ship's hull, and you have a speaker that's more than capable of standing firm under pressure.

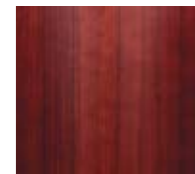




Piano Black Gloss



Cherrywood



Rosenut



800 Diamond

The speaker of choice for the world's most demanding recording studios, and a legend among serious sound enthusiasts everywhere, the 800 Diamond is the top speaker in the range – and very probably the finest speaker you will ever hear. Quite simply, the ultimate loudspeaker.



802 Diamond

If you're looking for a speaker with the power, clarity and presence of the mighty 800 Diamond, but your listening area can't quite accommodate its studio-sized proportions, the 802 Diamond is the answer. Retaining the groundbreaking spherical head design of its bigger brother, it's the closest you'll get to true studio sound at home.



803 Diamond

The 803 Diamond might look almost as imposing as the 802 Diamond, but thanks to its smaller footprint and more traditional cabinet design, it will fit more comfortably into a home environment. With three massive 7" Rohacell™ bass drivers, it delivers almost as much bass as the 802 Diamond, filling even the largest of domestic rooms with rich, stunningly lifelike sound.



804 Diamond

As versatile as its smaller brother the 805 Diamond, the elegant, floorstanding 804 Diamond has an even more commanding acoustic presence, thanks to a true three-way design incorporating two Rohacell bass units, an FST™ midrange and a diamond dome tweeter delivering pin-sharp clarity all the way up the frequency range. A brilliant all-round performer for any occasion.



805 Diamond

The 805 Diamond is an industry world-first – the only speaker of its size and type to incorporate true studio-grade technology in the form of a diamond dome tweeter. Experience remarkable, lifelike sound from a discreet speaker that fits almost anywhere. (Separate floor stand in black or silver available)



HTM2 Diamond

If you're looking for a centre-channel dialogue speaker to use as part of an 800 Series Diamond home theatre set-up, HTM2 Diamond provides all the clarity and richness you need for larger viewing spaces. That's down to a three-way design featuring two dedicated bass drivers, our FST Midrange – and, of course, a diamond dome tweeter.



HTM4 Diamond

Perfect for smaller viewing areas, the compact HTM4 Diamond centre-channel speaker will seamlessly balance the sound in an 800 Series Diamond home theatre set-up, thanks to highly advanced, complementary technology like a Kevlar® bass/midrange driver and – for the first time ever – a diamond dome tweeter.



DB1

If you're serious about home cinema, you're going to need a seriously good subwoofer. Combining power with wonderful subtlety and control, the DB1 sub is the perfect partner for an 800 Series Diamond home theatre set-up. Plus, its agility and musicality make DB1 the ideal high-end Hi-Fi subwoofer.

PM1 is a compact audiophile speaker for design purists. Combining tried and trusted reference technologies such as our tweeter-on-top design with entirely new features, it produces a sound so refined that everything else suddenly seems insignificant.



Carbon-braced tweeter

Introduced especially for PM1, carbon bracing is a new technological feature that takes the performance of our aluminium domes to new heights. A ring of ultra-thin wound carbon fibre braces the tweeter dome, improving control and stability and raising the break-up threshold.

Kevlar

Back in the 1970s, we were the first audio company to discover the unique advantages of Kevlar as a speaker cone material. Combined with our specially formulated resin, Kevlar helps prevent the standing waves that can cause distortion in the midrange, allowing the cone to move more evenly and freely.

Flowport™

Flowport minimises turbulence in the same way as a golf ball. Dimples on the surface generate tiny eddy currents over which air can flow smoothly, helping to keep the bass tight and well-timed while reducing extraneous noise.



No artificial additives. That's the philosophy at the heart of our approach to the CM Series. A range of elegant, high-quality speakers for the home, the CM Series hones the art of speaker design down to its purest essentials, using minimalist crossovers and drive unit technologies adapted from our most advanced reference speakers. So nothing gets between you and the sound of the performance.





Tweeter on top
 The top-of-the-range CM10 comes with a tweeter-on-top design – a feature it shares with our most advanced reference speaker range, the 800 Series Diamond. Isolating the tweeter in this way aids imaging and dispersion, creating a more natural, spacious sound. Meanwhile the tweeter dome's unique sandwich construction raises the bar for precision and control, even at the very highest frequencies.



FST
 FST (or "fixed suspension transducer", to give it its proper name) enhances the properties of Kevlar by absorbing bending waves travelling to the edge of the cone, further improving response times and the integrity of sound transmission. It's a highly refined piece of technology we reserve for some of our most advanced Hi-Fi speakers, including many of the speakers in the CM Series.



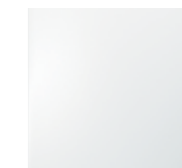
Gloss Black
(ASW12CM and ASW10CM are only available in Gloss Black).



Wengé



Rosenut



Satin White
(not available for CM Centre 2, ASW12CM, ASW10CM)



CM10

The top-of-the-range CM10 breaks the mould for the CM Series – it's the only speaker in the range to incorporate the pioneering tweeter-on-top design found in our flagship 800 Diamond Series. And that's not the only feature this three-way floorstander shares in common with its studio-quality cousins. As with 800 Series Diamond speakers, the FST midrange driver is decoupled from the cabinet, resulting in the purest possible midrange frequencies, with minimum coloration from the speaker's three mighty paper/Kevlar bass units.



CM9

This imposing floorstanding speaker will fill even the largest domestic spaces with spectacularly detailed, rich and lifelike sound. The three-way CM9 delivers truly commanding bass with the aid of twin 165mm (6.5in) paper/Kevlar cone drive units. The FST driver is specially developed for outstanding midrange performance, while the CM9's Nautilus tube-loaded aluminium dome tweeter keeps high frequencies crisp and sharp.



CM8

An elegantly proportioned, slimmed down version of the award-winning CM9, the true three-way CM8 will appeal to discerning customers who demand the very best sound quality, but have limited space in which to achieve it. An FST driver reveals layers of breathtaking detail in the midrange, while two 130mm paper/Kevlar bass drivers ensure deep, powerful bass. Like all the models in the CM Series, the CM8 uses crossovers of remarkable simplicity and quality.



CM5

On a bookshelf or a speaker stand, CM5 will give you a wonderfully big, expansive sound even if you don't have the floorspace to match. It's a slightly larger speaker than its sibling CM1, with even higher sensitivity and power handling, and improved bass extension. It partners a sizable 165mm (6.5in) Kevlar cone bass/midrange driver with a Nautilus tube-loaded aluminium dome tweeter.



CM1

CM1 may be small, but thanks to the quality of its construction, it's capable of producing a sound that's a match for its bigger brothers. The partnership of a 130mm (5in) Kevlar cone bass/midrange driver with a Nautilus tube-loaded aluminium dome tweeter helps the speaker handle musical detail with ease across the full frequency spectrum. CM1's bass is always deep and under control thanks to the CM Series' magnet and voice coil system technology, which keeps distortion to a minimum.



CM Centre 2

If you want to get the most from your movies, the CM Centre 2 is an ideal match for a pair of floorstanding CM9s or CM8s in larger home theatre set-ups. The three-way centre channel speaker features a similar driver line-up to the CM9, including two 165mm (6.5in) paper/Kevlar cone bass drive units and a Nautilus tube-loaded aluminium dome tweeter. In order to keep cabinet height to a minimum, the speaker uses a slightly smaller 100mm (4in) Kevlar FST midrange driver.



CM Centre

This home theatre centre channel speaker thinks it's a Hi-Fi monitor. And it is. The CM Centre's symmetrically arranged driver line-up of twin 130mm (5in) Kevlar cone bass/midrange units and a 25mm (1in) Nautilus tube-loaded aluminium dome tweeter are integrated by a minimalist, ear-tuned, first-order network made possible by the remarkably wide bandwidth of the drivers. The CM Centre makes music that is a seamless, cohesive whole and displays a striking ability to resolve fine detail.



ASW 10CM

The bass driver diaphragm of the ASW 10CM is constructed from a rugged, finely-tuned mix of paper pulp, Kevlar fibres and resin. Surprisingly compact, this subwoofer delivers serious bass power thanks to a 500W amplifier, equipped with audiophile-standard Class D circuitry to keep the unit cool and efficient under pressure. (Gloss Black only)

The latest 600 Series makes audiophile sound and leading-edge speaker technologies more accessible than ever. As well as borrowing features from our flagship ranges, the series brings a clean, modern look, a choice of finishes and a leap forward in sound quality that raises the bar to a whole new level.





Black Ash

White



683

The largest speaker in the new 600 Series delivers outstanding power, accuracy and musicality. The floorstander features the new Decoupled Double Dome tweeter, an FST midrange driver and new Dual Layer aluminium bass drivers. The result is a loudspeaker ideal for both high-performance stereo and surround sound applications even in larger rooms, delivering serious performance and amazing value.



684

Room-filling sound without a room-filling speaker cabinet. Slimmer than ever, the 684 offers an amazing combination of serious floorstander power, spectacular audio performance and unbeatable value thanks to its new and vastly improved bass/midrange drivers and the Decoupled Double Dome tweeter.



685

At home on either a stand or bookshelf, the versatile new 685 delivers outstanding performance. Perfectly sized for most rooms, it combines new Decoupled Double Dome tweeters, Kevlar cones and Anti-Resonance Plugs, with the value for which the 600 Series is renowned.



686

Small is beautiful – at just 160mm wide, the 686 may be the most compact speaker in the new 600 Series, but don't underestimate its power and precision. That's thanks to its new Decoupled Double Dome tweeter, improved Kevlar driver and front-facing Flowport™.



HTM61
HTM61 is tailor-made to partner either the 683 or 684 in a commanding home theatre system. It's a full three-way speaker comprising a 165mm (6.5in) diameter Kevlar bass, a 150mm (6in) diameter Kevlar midrange with FST cone surround technology, and a Nautilus tube-loaded tweeter.



HTM62
For home theatre systems in small to medium-sized rooms, where it can team up with a pair of 684 floorstanders or 685 bookshelf units in the front positions, HTM62 offers outstanding centre speaker performance.



ASW610XP
A powerful yet compact subwoofer to add extra weight to the sound of music or movies. The long throw of the 250mm (10in) composite paper-Kevlar cone allows it to move the large volumes of air needed for accurate, punchy bass. The unit delivers serious power thanks to its 500W Class D amplifier.



ASW610
The ASW610 subwoofer presents a very happy medium between the more diminutive ASW608 and the all-out power of ASW610XP. Its long-throw 250mm (10in) driver allows ASW610 to move the large volumes of air needed for high-quality low-frequency output, and its audiophile-standard 200W Class D amplifier keeps the compact unit running cool, even when the music or movie action is whipping up a storm.



ASW608
For big sound in smaller spaces, you can't beat ASW608, the most compact of the 600 Series subwoofers. The speaker's long-throw 200mm (8in) driver allows ASW608 to move the large volumes of air needed for high-quality low-frequency output, and its audiophile-standard 200W Class D amplifier keeps the unit running cool, even at very high volume levels.



DS3
DS3 is a wall-mounted surround speaker that can operate in both dipole mode, to create the all-enveloping effect of a large auditorium, or monopole mode, in which the sound from side or rear is more precisely located and less diffuse. The choice depends on the room conditions, the size of the audience and viewing material.

Computer Speakers

Once they were for spreadsheets. Now computers are for everything: socialising, games, music, films. So it seems a shame that deskbound entertainment fans have always had to make do with sub-standard audio. No longer. Our computer speakers bring Hi-Fi quality sound to your desktop for the first time, giving your computer the audio it deserves.





MM-1s aren't like other computer speakers. They're true Hi-Fi speakers, shrunk to fit on your desktop. So they don't just look great – they sound amazing, transforming your humble laptop or desk monitor into a superb Hi-Fi stereo sound system.



Uncompromising build quality

Think computer speakers and you think unsightly plastic boxes. MM-1 is different. Elegantly designed and robustly constructed, everything about it – from the brushed steel finish to the reassuring weight – says quality. You'll be proud to have the MM-1 beside any laptop or computer monitor.



Genuine Hi-Fi design

MM-1 is a true two-way speaker, with both the tweeter and bass/midrange drivers drawing on all our years of experience. The bass/midrange driver is a long-throw design, with high-power handling and a neodymium motor. All this is contained within a vented chassis. There's a reason MM-1 sounds as accurate as a true Hi-Fi speaker – that's exactly what it is.

Home Theatre

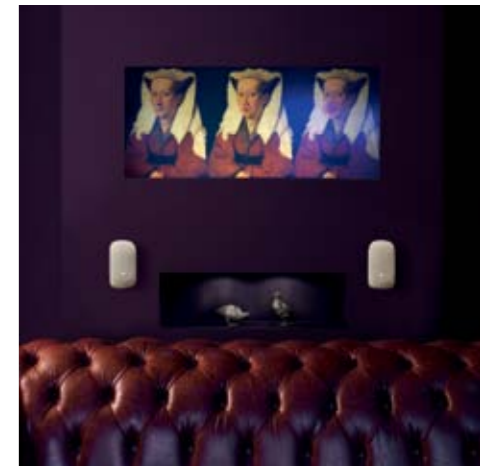
Here are the speakers your TV has been crying out for. Bring all the excitement of cinema sound into your living room with the stunningly capable Mini Theatre range. Or go even more discreet with Panorama 2, a soundbar that creates a truly immersive surround sound effect from a single speaker. Either way, home entertainment will never be the same again.



Experience the thrill of true cinema sound at home with Mini Theatre. Tucked away on bookshelves or mounted on stands, these are high-performance speakers designed to blend unobtrusively into your surroundings. Meanwhile satellites and subwoofers integrate seamlessly, creating an immersive soundscape that feels stunningly natural and true to life. No distractions. Just pure entertainment.



Sleek, compact, yet packing a powerful punch, the M-1 satellite speaker is the backbone of both our Mini Theatre systems, taking all five positions in a surround-sound set-up. From the inside out, the M-1 was conceived as a unified system. Its design has evolved in a totally integrated way, from the custom-made crossover and drive units to the two-piece clamshell cabinet. The result? Ultra-wide dispersion, pin-point accurate imaging and full-range performance.



Cable management

In the same way a power cable enters a well-designed table lamp at its base and passes up through the stand, the M-1's signal cable disappears into the back of the table plinth stand, from where the signal reaches the speaker via a specially-designed, pre-wired arm support.

When we decided to create a powerful new compact subwoofer for use in home theatre set-ups, we weren't going to contradict nature. Instead of a box, we based it on a bubble; the natural way of containing internal pressures. In the PV1D, air pressures are dispersed evenly around a continuous shell, reducing unwanted vibrations to a bare minimum. Coupled with a back-to-back drive unit layout that improves balance and control, you have subwoofer ready for anything cinema sound can throw at it.



Digital control

The PV1D can be fine-tuned and controlled with ease and precision, thanks to its digital control panel. Do you love the visceral deep-bass impact of special movie sound effects? Or maybe you prefer a flatter response, to compensate for a more resonant listening environment? Whatever your listening tastes, with a full range of EQ options at your disposal, the choice is yours.



With the prodigious power required for home theatre, but also providing enough control and response to satisfy the demands of an audiophile Hi-Fi system, DB1 is not only the best subwoofer we've ever produced – it's also the most versatile. That's thanks in large part to its opposed twin-driver design, digital signal processing, and dedicated 1,000W amplifier.



Star performer

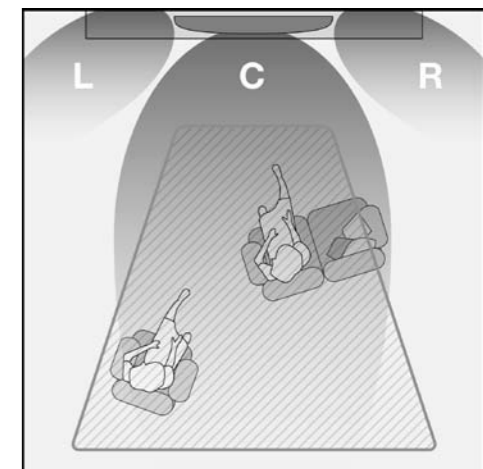
Left: DB1 offers unrivalled levels of accuracy and responsiveness for a subwoofer: so much so that we recommend pairing it with our flagship reference range, the 800 Series Diamond. Above: DB1's digital display gives complete control over the speaker's settings.



Craving the drama and excitement of surround sound, but reluctant to fill your room with speakers? Panorama 2 is the answer. The soundbar's drive unit layout mimics the effect of a multi-speaker surround sound system, with an immersive soundstage wide enough for everyone in the room to experience. Films, music and games come to life in a way that you would never think possible. And all from one discreet speaker.

Cinema sound for all

With Panorama 2, no-one needs to miss out on the full surround sound home cinema experience – no matter the shape of the room, the size of your audience, or where they're sitting.



Proximity-sensitive display

To ensure nothing distracts you from the action on screen, Panorama 2 has a proximity-sensitive display. Leave it alone and the display panel fades to black – so no lights or buttons to break up the clean lines of the speaker. Wave your hand over it and the display comes to life, giving you instant access to the soundbar's menus.



HDMI connectivity

For ultimate versatility, Panorama 2 comes with three HDMI inputs and one output. So the soundbar will connect not only with almost any type of TV, but a whole range of other devices. Plus there's no need to clutter your living room with extra devices: Panorama 2's intelligent connectivity means you can control the soundbar with your existing TV remote.



Wireless Music Systems

Think of a track. Now imagine you can just play it – instantly, in room-filling, Hi-Fi sound quality. With Bowers & Wilkins range of Wireless Music Systems, it's easy. Dock your device, or stream music via your iPhone®, iPad® or laptop from wherever you are, using iTunes™ or your favourite music apps. Add more speakers from the range, and you've got yourself a wireless multi-room sound system. It's Hi-Fi for the way we live today.





Welcome to the complete iPhone speaker dock. Zeppelin Air is famous for its striking looks, uncompromising build quality and stunning, room-filling sound. And with Apple's AirPlay® technology built in, you can choose to either dock your iPhone using the Lightning connector™, or play and control music wirelessly from wherever you are, using your smartphone, tablet, Mac® or PC.

Zeppelin Air is designed to help you get the most out of your music, however you like to play it. It works seamlessly with your favourite music apps, like Spotify. It's easy to add more speakers and create a multi-room sound system. Even setting up and connecting to your wireless network is a breeze, thanks to our free Control app. It's time to set your music free.



Wide angle

There's a sound acoustic principle behind Zeppelin Air's extraordinary elongated shape. Placing the drive units as far apart as possible aids sound dispersion, helping to create a more open, natural sound. Add in custom-designed mid-range drive units and high quality tweeters, and the result is a remarkably spacious, room-filling performance.

Individually driven

Every drive unit on Zeppelin Air is powered by its own dedicated amplifier. This fully active 2.1 design has dramatic benefits on audio quality, with increased precision, seamless integration and significantly improved bass attack.



Smooth bass

The dimples improve the way air flows over the surface of a Bowers & Wilkins Flowport, reducing turbulence. The result is reduced chuffing noise and less compression at high levels; which means better bass no matter how loud you like your music.





Dock or stream

Dock your iPhone 5. Or play your music library wirelessly from iTunes or an iPhone or iPad. Or stream tracks using your favourite music apps. With AirPlay built in, how you play is up to you.



Play anywhere

Think of a tune, and you can start playing it. Instantly. With integrated AirPlay technology, you can either dock your device, or stream music wirelessly from wherever you happen to be. Add more Z2s to your wireless network and you can stream music all over the house.



Fits into your life

Z2's build quality and sleek styling makes it suited to practically any home environment. It's available in a choice of black or white finishes, and is constructed from a sleek and highly durable combination of rubber and stainless steel.



If you won't settle for less than great sound even when space is limited, Z2 is the iPhone speaker dock for you. Z2 brings you remarkable performance, intelligent design and effortless wireless connectivity, all contained within a streamlined, compact package that's perfect for desktops and bedside tables.



A7 introduces an exciting new concept in home audio: an entirely wireless Hi-Fi quality music system. Powered by audiophile-grade Bowers & Wilkins technology, it's quite simply the best-sounding system in its class.



Full-range performance

A7's subwoofer and bass sensitivity has been optimised to create a speaker capable of handling the broadest range of frequencies, from the deepest bass upwards. It performs like a fully fledged 2.1 speaker system in a single box.

Music at your fingertips

A7 comes with AirPlay – the best wireless music system in the business, ideal for streaming high-quality, lossless audio files. So as well as enjoying the effortless freedom of wireless, you can rediscover your music in all its rich, detailed glory.



If you're looking for great wireless audio combined with minimal visual impact, the versatile A5 system is an ideal choice. It delivers a remarkably solid acoustic performance, and packs a serious sonic punch, thanks to some ingenious acoustic innovations.



Spacious sound

Don't be fooled by A5's size: it packs a serious sonic punch, thanks to some ingenious acoustic innovations. Digital Signal Processing and high quality Digital-to-Analogue converters help produce the kind of spacious sound you'd expect from a much bigger speaker.

Easy set-up

Thanks to the free Bowers & Wilkins Control app, it's a breeze to set up and manage your A5. The app will walk you through all the simple steps to connect to your Wi-Fi network and manage your settings, all wirelessly.



Headphones

Get closer to the true sound of your music on the move with Hi-Fi headphones from Bowers & Wilkins. Drawing on half a century of acoustic innovation and expertise, and constructed using only the finest quality materials, our headphones bring you the remarkably natural, lifelike sound of real Hi-Fi, wherever you are.



P7 Mobile Hi-Fi Headphones

Our flagship P7 headphones set a whole new standard for portable Hi-Fi sound quality. Drawing on everything we know about speaker technology, and featuring revolutionary new drive units inspired by our stand-alone Hi-Fi speakers, these premium over-the-ear headphones combine a truly astonishing, immersive sound with impeccable build quality.



Revolutionary drive units

For P7, we've created a new kind of headphone drive unit that works more like a Hi-Fi speaker, with a diaphragm focussed purely on the job it's supposed to do: generate sound. Which means more precise, controlled movement – and a giant step forward in sound quality.



Made for iPhone

P7's cable comes with a remote/microphone attachment, so it works seamlessly with your iPhone. And because the cable is so easy to detach and swap, P7 is also compatible with all other mobile phones and MP3 players.



Foldable design

Thanks to an intelligent new folding mechanism using a highly-durable steel hinge, the P7s fold as easily as a pair of sunglasses. Perfect for storage and portability, it means you can take your P7s wherever you go, always enjoying an incredible and totally immersive sound experience.



Dual cavity ear pads

P7's dual cavity cushion ear pads mold better to the wearer's head. This increases comfort and isolation from outside noise and ensures a consistent volume of air in the space between the drive units and your ears. So everyone experiences the same sound, regardless of different head shapes.

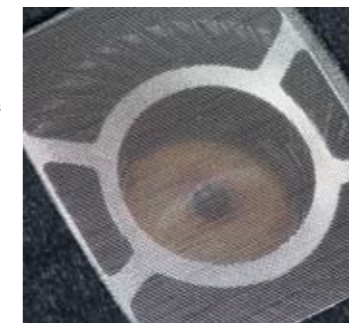
P5 Mobile Hi-Fi Headphones

Experience the ultimate balance of comfort, portability and sound quality with P5, the noise-isolating headphones from Bowers & Wilkins. Combining natural Hi-Fi sound, beautiful materials and a luxuriously comfortable fit, it makes longer listening sessions a pleasure. Think of it as your own personal concert – to go.



Made for iPhone

Our award-winning sound docks demonstrate that we know a thing or two about getting great sound from an iPhone. P5 gives you the same incredible sound quality on the move, and comes with an Apple-approved cable, for speech and device control.



Listen for longer

Gimmicky effects like exaggerated bass or artificially enhanced treble quickly become tiring with extended listening. The P5's natural audio performance brings you close to the sound of the original recording, as you were meant to hear it. Which means you can enjoy your favourite music for longer.

Life-long comfort

P5 is very easy on the ears. The ergonomic design is married to a headband and earpads crafted from the finest-quality sheep's leather. Durable and hardwearing, yet remarkably soft and supple, it makes even longer listening sessions feel comfortable.



Noise isolation

A closed-back design with rigid metal faceplates and sealed earpads ensures that all the detail and dynamic range of your music is kept intact, with minimum outside interference. At the same time, you'll hear just enough ambient sound to preserve a sense of place. Perfect for listening to music on the go.



P3 Mobile Hi-Fi Headphones

P3 combines pristine audio performance with maximum wearability. These slimline headphones fit lightly and snugly on your head, and fold up to stow away in your jacket pocket or their own hard-shell carry case. And they produce a remarkably natural, detailed sound on the move, thanks to some major technological innovations that reduce distortion to a minimum.



Made for iPhone

P3's cable comes with a remote/microphone attachment, so it works seamlessly with your iPhone, giving you complete control over speech and volume. And because the cable is so easy to detach and swap, P3 is also compatible with all other smartphones and MP3 players.

Acoustic cloth

There's more to P3's ear pads than meets the eye. The bespoke fabric covering the pads provides acoustic transparency in the centre, while forming a perfect seal around the edge for better bass and noise isolation. The pads are made from heat-sensitive memory foam that moulds to the shape of your ears, becoming more comfortable and enhancing sound quality over time.

Driver technology

P3's drive units have been designed from the ground up to give the best possible sound from a small set of headphones. We've repositioned the terminals to make sure that airflow around the drive units is uniform, resulting in a more linear movement. And we've introduced a unique damping system that provides the optimum balance of stiffness and flexibility.

Foldable design

P3 is an extremely portable set of headphones built for everyday use. The headphones can be folded to slip easily into a jacket pocket, or for storage in their own specially designed hard-shell case. So no need to worry about your headphones getting bashed in your rucksack, handbag or flight bag.



C5 In-Ear Headphones

C5 in-ear headphones bring you natural acoustics and fit so comfortably and securely you'll forget you're wearing them. So you can lose yourself in unadulterated sound, even when you're on the move.



Easy on the ears

C5's comfortable fit and hard-wearing aluminium body means you can enjoy great sound on the go for longer.

Secure fit

C5 headphones feature our innovative Secure Loop design – cushioned loops that curl around the inner rim of your ears and hold the headphones securely in place. C5s are also tungsten balanced, meaning that the headphones are weighted towards your ears, rather than away from them, for an improved fit.



Made for iPhone

C5's 'Made For iPhone' remote and microphone make the headphones the perfect match for your iPod or iPhone. They also come with a quilted carrying pouch for storing them away when not in use.

Natural sound

C5 headphones fit so snugly in your ears that you can forget about them and lose yourself in sound. Meanwhile, our Micro Porous Filter system makes sure that music sounds open, spacious and full of rich, lifelike detail.



Custom Installation

Hide the hardware, reveal the true quality of your music. Each model in our Custom Installation range is designed to vanish into walls and ceilings, fitting virtually flush to the surface with minimal visual impact. But while these speakers are made to disappear from view, advanced Bowers & Wilkins technologies ensure the sound they produce is anything but shy and retiring. From two-channel Hi-Fi to multi-room sound systems and home cinema, experience a sound that's quite simply out of sight.

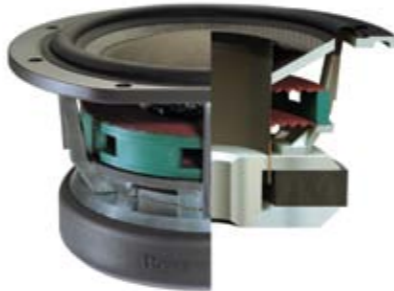


You're blasting into the Death Star with Luke Skywalker. Riding shotgun through the streets of San Francisco with Steve McQueen. Feeling Monroe's breath on your cheek. The best cinema sound does more than create an impression of reality – it makes you feel like you're there, right in the heart of the action. Thanks to Bowers & Wilkins technology working behind the scenes, that's exactly what happens with our Custom Theatre ranges.

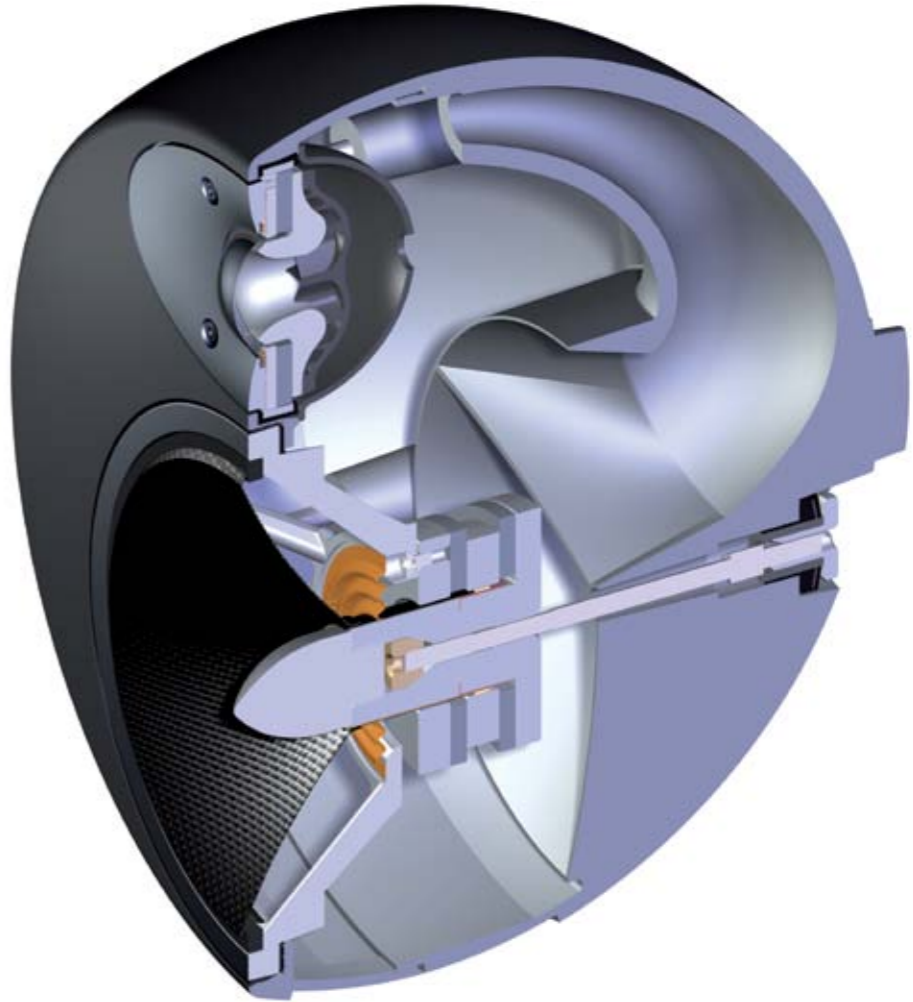




Nautilus spiral tweeters
Our Nautilus speaker introduced tapering tubes – reversed horns that drain away unwanted sound from the rear of the driver, leaving a more pristine sound from the front. For this range we’ve adapted this concept to suit the demands of custom theatre. Tapering tubes have been replaced by a whirl of spiralling channels contained in a shallow cup, each of which absorbs unwanted sound energy from the back of the diaphragm.



Bass driver construction
Only a rock-solid, rigid driver will deliver the kind of visceral impact that cinema bass effects demand. Custom Theatre bass drivers use a mushroom diaphragm construction that bonds the Rohacell cone, dust cap and huge voice coil together in a single girder-like unit.



Decoupled drive units
The midrange and tweeter of the CT8 LR and CT8 CC speakers are contained within a single head unit, decoupled from the rest of the cabinet so that it can swivel in different directions. That means it can be angled directly towards your seating area, no matter how wide your screen or where your cabinets are positioned.



Custom Theatre 800 Series

When it comes to home theatre, it doesn't get any better than the CT800 Series. Delivering more sonic power and accuracy than your average multiplex cinema, this system brings the advanced audio technologies found in our flagship 800 Series Diamond Hi-Fi range directly to your home theatre set-up. So every pin-drop, staircase creak and earth-shaking explosion comes to life with the kind of detail and realism you would expect to hear in a recording studio. Welcome to the best home cinema sound in town.



CT8 XO Mk2

The CT8 XO Mk2 is the conductor for the CT800 home theatre orchestra: an active crossover/equaliser providing all the necessary filtering and control functions to make sure that your system sings in perfect harmony.



CT8 LR

At the heart of this front channel speaker is technology borrowed directly from our flagship 800 Series Diamond: twin Rohacell bass drivers, a woven Kevlar FST midrange driver and a metal dome high-frequency tweeter. The spherical midrange/tweeter head can be angled for perfect alignment with the listening area.



CT8.2 LCR

CT8.2 LCR's unique modular baffle design allows it to be used as a LCR speaker in either vertical or horizontal positions. The speaker features twin Paper/Kevlar bass drivers, a woven Kevlar FST midrange driver and a metal dome high-frequency tweeter in a passive crossover design.



CT8 CC

The CT8 CC centre speaker borrows its Nautilus-inspired driver line-up from the CT8 LR front speaker. The same Rohacell bass drivers, woven Kevlar FST midrange driver and metal dome high-frequency tweeter are employed, but arranged with the twin bass drivers positioned either side of the combined midrange and high-frequency adjustable pod.



CT8 DS

To generate an authentically three-dimensional listening experience, the CT8 DS surround speaker offers both dipole and monopole surround dispersion. Along with forward-facing Kevlar FST midrange and metal-dome high-frequency drivers, the CT8 DS also carries side-facing Kevlar midrange/high-frequency drivers.



CT8.4 LCRS

The CT8.4 LCRS is designed as an alternative to the CT8 DS when space is at a premium: it's a smaller, more compact vertical surround sound speaker that generates a similarly 3D experience. It also packs enough power to act as a stand-alone loudspeaker when positioned front, side or rear.



CT8 SW

Used with each CT8 LR, this passive subwoofer is designed to extend the front channel speaker's bandwidth down to 13Hz, perfectly reproducing low frequency signals without compromising dynamics and imaging. Closed-box loading, a 380mm (15in) Rohacell driver and a 70 litre Matrix braced enclosure mean home theatre bass will never be quite the same again.

Custom Theatre 700 Series

If you thought true home theatre sound was beyond the reach of all but the most committed audiophiles, think again. The CT700 Series refuses to compromise a single decibel on quality, borrowing Nautilus-derived technology such as tube-loaded tweeters, and Kevlar drive units from our best Hi-Fi speakers. Each model in the range integrates seamlessly with home theatre cabinetry and is versatile enough to be used in left, centre, right or surround sound positions. Put together, they add a whole new dimension to your enjoyment of home theatre.



CT7.3 LCRS

The top-of-the-range speaker offers unparalleled clarity combined with powerful low frequency effects thanks to a pair of whopping 200mm (8in) paper/Kevlar bass units and a dedicated Kevlar FST midrange.



CT7.4 LCRS

The mid-point speaker in the range offers a combination of high sensitivity and impressive performance at lower frequencies through its two 150mm (6in) Kevlar bass/midrange drivers.



CT7.5 LCRS

The entry-level loudspeaker in the CT700 Series delivers outstanding spaciousness, imaging and definition through its single 180mm (7in) Kevlar bass/midrange unit.

Custom Theatre Subwoofers

However big your Custom Theatre set-up, you'll be glad to know we've got the sub to match. Featuring a closed-box design that makes them easy to install in cabinetry, each model provides the dynamics and control needed to handle the most powerful movie effects, from big explosions to the sweep of an orchestral score. All that's left for you to do is hang on to your seat.



CT SW15

For maximum bass impact, the CT SW15 comes with a 380mm (15in) long-throw cone, made from paper/Kevlar composite.



CT SW12

Where space is at a premium, the CT SW12 features a slightly smaller 300mm (12in) long-throw cone made from paper/Kevlar composite.



CT SW10

The most compact of our three Custom Theatre subs features a 250mm (10in) long-throw paper/Kevlar cone.



Subwoofer Amplifier SA1000

The SA1000's equalisation is custom-tailored to the Custom Theatre Subwoofers, ensuring deep-bass extension all the way to 16Hz. And why stop at just one subwoofer? For really serious bass, it's possible to use the SA1000 to power two subs simultaneously.

See nothing. Hear everything. With our in-wall and in-ceiling speakers, you can preserve the pure aesthetics of your space without cabinets or cables spoiling the view. Combining robust back box construction with technologies borrowed from our top-of-the-range freestanding models, they're all but invisible to the eye, yet infinitely pleasing to the ear.





Decoupled carbon-braced tweeters
Taking inspiration from our PM1 Hi-Fi speaker, the Nautilus tube-loaded tweeter in the CI 800 Series features a carbon-braced aluminium dome, raising the break-up threshold to a remarkable 40kHz. As in the 800 Series Diamond, the tweeters are decoupled from the rest of the speaker assembly, minimising colouration and improving performance.

Enhanced bass drivers
To overcome the acoustic challenges of housing bass units in thin cavity walls our Custom Installation ranges feature specially designed low-excursion drive units. In the CI 800 Series, bass drivers use carbon-reinforced Rohacell cones, while Flowport technology improves bass control and reduces extraneous noise.



Acoustically optimised back boxes
Our Custom Installation back boxes aren't just made for fast and easy installation – they enhance the sonic performance of the speaker. Back boxes are braced using our Matrix system to make them rigid and acoustically inert, while each is designed to ensure consistent air volume around the back of the speaker.

Custom Installation 800 Series

With the CI 800 Series, we've created something that no-one thought possible: architectural speakers capable of delivering the kind of sound quality normally found only in high-performance floorstanders. Whether you're using them for music or as part of a home theatre system, they are a perfect sonic match for our high-end Hi-Fi and cinema speakers, the 800 Series Diamond and the CT800.



CWM8.3, CWM8.5 and CCM8.5

The CI 800 range comprises three models, each designed for a specific task. The CWM8.3 is an in-wall speaker for very high performance cinema and music applications, particularly the front three channels of a home theatre. The CWM8.5 in-wall speaker offers a stunning level of performance for music and movies, where space is more limited. The CCM8.5 in-ceiling speaker delivers a directable sound stage into any area of the room, ideal for the rear channels in a home cinema set-up.

Custom Installation 700 Series

If you think compromise comes as standard with custom installed speakers, you've yet to experience our CI 700 Series. We've come up with ingenious features to compensate for the acoustic deficiencies of brick and plasterboard, like rigid back boxes and specially designed baffles. And we've incorporated advanced acoustic innovations like FST drivers and Flowport vent systems.



CCM7.3, CCM7.4 and CCM7.5

Behind the barely noticeable grille of these in-ceiling speakers is some seriously advanced acoustic technology. The three-way CCM7.3, for example, features a dedicated Kevlar midrange driver with an FST surround. We've also introduced some new innovations designed especially for this range: enhancements like angled, ultra-rigid baffles, and a unique scallop-shaped indentation under the tweeter for minimum distortion at high frequencies.



CWM7.3, CWM7.4 and CWM7.5

These exceptional in-wall units are packed full of technology that makes them more than a match for most free-standing Hi-Fi speakers. The CWM7.5 and the CWM7.4 both feature Nautilus tube-loaded tweeters and Kevlar bass/midrange drivers, while the mighty three-way CWM7.3 has a dedicated Kevlar FST cone for stunning definition in the midrange, and two Paper/Kevlar bass drivers for truly commanding bass impact and presence.

Custom Installation 600 Series

Our entry-level Custom Installation series delivers a sound that's impossible to ignore, thanks to the kind of technology you would expect to find in a quality Hi-Fi system. With features like our QuickDog™ fixing mechanism and plug-and-play connectivity, installation couldn't be easier – and with super-thin bezels the speakers are barely noticeable once installed.



CCM662, CCM663, CCM664 and CCM665

Discreet, versatile and fantastically easy to install, these two-way, six-inch in-ceiling speakers will bring great sound to places other speakers can't reach. But while they're small enough to fit almost anywhere, they also pack a powerful punch: the CCM662 and the CCM663, for example, feature true audiophile-standard technology in the form of Nautilus Swirl-loaded aluminium dome tweeters and blue Kevlar bass/midrange cones.



CCM682, CCM683 and CCM684

The largest of the Custom Installation 600 Series' in-ceiling range, these two-way speakers bring you an amazingly rich, full-bodied sound, courtesy of their sizable eight-inch bass/midrange cones. The CCM682 is capable of handling an impressive 150W of power, and both the CCM682 and the CCM683 feature Nautilus Swirl-loaded aluminium dome tweeters and blue Kevlar bass/midrange cones.



CCM663SR and CCM664SR

These are the dual-channel in-ceiling speakers in the Custom Installation 600 Series range. A clever design bringing together two voice coils and two tweeters, meaning you can experience pseudo stereo sound from just one speaker. They're ideal for bringing stereo sound to rooms where space is limited, or as a discreet option for the surround sound channel in a home theatre set-up (you can change between these two modes at the flick of a switch). The CCM663SR features a blue Kevlar bass/midrange cone.



CWM663, CWM664 and CWM652

We've brought some of our most refined technology to these neat in-wall speakers, so you can enjoy serious Hi-Fi sound quality from a system that's close to invisible. All three speakers in the range have tweeters featuring our famous Nautilus tube-loaded design – a true audiophile-grade piece of technology that helps to minimise sound colouration. We haven't stinted on technology even for the smallest speaker in the range: the CWM652 is equipped with a blue Kevlar bass/midrange driver.



Custom Installation 300 Series

Looking for discreet Hi-Fi sound in a sauna, shower room or indoor swimming pool? Introducing the CI 300 Series: a range of custom installed speakers offering the exceptional sound quality you expect from Bowers & Wilkins, but designed especially to work in high humidity environments. Constructed from rugged, moisture-resistant materials, this range brings music to places other speakers can't reach.



CCM362

The CCM362 is a two-way in-ceiling loudspeaker, balanced for wide-angle listening. It comes with a choice of round or square baffles, and like all the models in the CI 300 Series it features an elegant minimal-width border design. It features a 1 x 160mm (6in) Polypropylene cone bass/midrange driver, and a 1 x 25mm (1in) soft dome tweeter.



CCM382

The CCM382 is a two-way in-ceiling loudspeaker, balanced for wide-angle listening. It comes with a choice of round or square baffles, and like all the models in the CI 300 Series it features an elegant minimal-width border design. It features a 1 x 200mm (8in) Polypropylene cone bass/midrange driver, and a 1 x 25mm (1in) soft dome tweeter.



CWM362

The CWM362 is a two-way in-wall loudspeaker. Like the in-ceiling models in the series, it features an elegant minimal-width border design. It features a 1 x 160mm (6in) Polypropylene cone bass/midrange driver, and a 1 x 25mm (1in) soft dome tweeter.

In-Wall Subwoofers

Bass is a vital element in our enjoyment of sound. So we've developed a brace of in-wall subwoofers specially designed for custom installation purposes. The ISW-3 and ISW-4 provide tight, controlled, yet deep bass without impacting on your living environment.



ISW-4

If you're looking for a built-in subwoofer that can provide big bass and audiophile extension for any of our Custom Installation systems, the ISW-4 is for you. Two long-throw 200mm (8in) drivers allow it to move the large volumes of air needed for high-quality low-frequency output. The speaker is housed in its own sturdy back box for rock-solid stability and minimum sound bleed, and is powered by the SA250 Mk2, a separate audiophile-standard 250W Class D amplifier.



ISW-3

The ISW-3 is an incredibly versatile and compact in-wall and in-ceiling subwoofer, capable of providing high-quality bass output in spaces that may have previously missed out on this vital element, including kitchen cabinets! Its balanced design, featuring 2 x 160mm (6in) drivers, means that it can be placed in a variety of locations without causing vibrations. Powered by a separate audiophile-standard 250W Class D amplifier the SA250 Mk2, the system keeps its cool even when you're listening to demanding movie soundtracks at high volumes.



SA250 Mk2

The SA250 Mk2 subwoofer amplifier is specifically designed for use with the Custom Installation Series in-wall subwoofers, the ISW-3 and ISW-4. Deceptively slim at 3.5inches, and weighing 11.9lb, it provides 250 Watts of power. The SA250 Mk2's equalisation is custom tailored to the in-wall subwoofers, with a two position EQ switch to select between the ISW-3 and ISW-4.

Custom Series

Back by popular demand, our original Custom Series is renowned as a classic among fans of custom installed sound systems. The range includes high-spec models, and smaller in-ceiling models.



CWMLCR7

The CWMLCR7 features twin 100mm (4in) mica cone bass drivers, a 100mm (4in) woven Kevlar cone midrange driver and a Nautilus tube-loaded 25mm (1in) aluminium dome tweeter. The mica bass drivers provide the low frequency snap characteristic of any really good loudspeaker.



CCM816

Featuring a Kevlar bass/midrange drive unit, the CCM816 in-ceiling speaker is a smaller version of the CCM818, designed for home theatre or 2-channel applications. Fitted at a 28-degree angle, the 165mm (6.5in) woven Kevlar cone drive unit enables the optimum listening axis to be directed more towards the listening area.



CCM818

An unobtrusive, flush-mounted, in-ceiling speaker, the CCM818 is as powerful as it is discreet. The speaker's 200mm (8in) woven Kevlar cone drive unit is fitted at a 12-degree angle, thereby retaining some of its cousin's sound directionality.



If you want to bring impeccable sound to places where conventional speakers fear to tread, we've come up with the ideal solution: the AM-1 architectural monitor. This weatherproof speaker is designed with the outdoors in mind – it's perfect for gardens, pool sides and patios – but its robust durability and sleek looks also makes it a great choice for public indoor spaces like bars or restaurants.



Easy installation

With AM-1, installation is made as easy and unfussy as possible. The discreet L-shaped bracket houses all the speaker terminals – so once you've wired up the bracket and mounted it to the wall, all that's left to do is slot in the speaker and you're ready to play. The bracket allows the speaker to be tilted/rotated 110 degrees from centre.



Seamless performance

AM-1's minimalist good looks aren't just for show. The seamless design of the cabinet shell keeps the inner workings perfectly sealed, providing deep, immersive bass as well as protecting the speaker from the elements. Combine this with a one-inch aluminium tweeter dome, a two-way drive unit design and a passive radiator for superior bass output, and you have a speaker that sings beautifully, whatever the weather.

Automotive

Music and driving were made for each other. The right track, at the right moment, can set the pulse racing just as much as the sound of a well-tuned engine or a smoothly executed hairpin bend. Our in-car systems combine our acoustic engineering expertise with the latest digital innovations to produce the most faithful audio reproduction ever heard on the road.



Maserati and Bowers & Wilkins: two different companies, with a shared passion for engineering excellence and technological innovation. We've joined forces with the legendary sports car maker to develop new projects and products – including a stunning audio system for the latest range of Maserati cars.



Integrated acoustics

Bowers & Wilkins audio system for Maserati isn't an after-thought – it's an integrated feature of the car's design. Fifteen speaker units are built into the cabin's internal architecture, strategically placed to ensure the best possible acoustics.



Advanced processing

With most car audio systems, sound quality is best in the driver's position. Maserati's surround system creates a rich sound experience, no matter where you're sitting. HARMAN's QuantumLogic signal processing and AuraVox equalisation create a wider sweet spot and ensure that everyone in the car gets a fair hearing.



Introducing two exclusive, special edition audio products that combine the very best of Maserati style and Bowers & Wilkins acoustic innovation: 805 Maserati Edition speaker and P5 Maserati Edition headphones.



805 Maserati Edition
The unique design of this high-performance speaker's cabinet and stand reflects the style of a Maserati car interior, featuring birds eye real wood veneer and black Maserati leather.



P5 Maserati Edition
Featuring fine-grain natural leather in distinctive Maserati blue, and the iconic Maserati trident marque, these headphones come with their own protective travel case, also in Maserati blue leather.



MASERATI

Society of Sound

At Bowers & Wilkins, the pursuit of perfect sound continues. And we're not alone. There are others – musicians, artists, engineers, customers – who share our passion. And now we're coming together to share music, knowledge, insights and our love of high quality audio. We call it the Society of Sound. If you care about sound and music, you're welcome to join us.



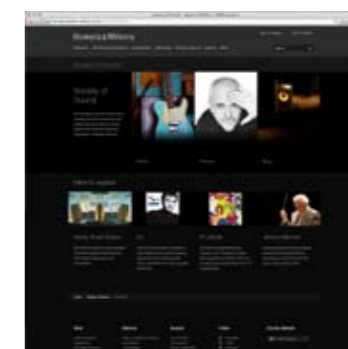
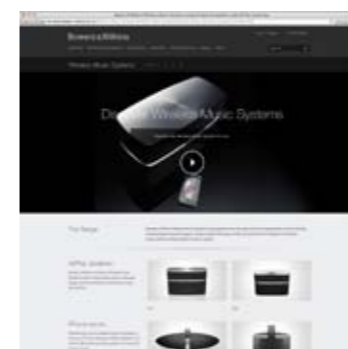
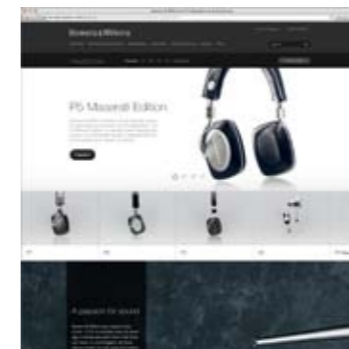


It's one thing to own a great pair of speakers. But if you're as obsessed with true sound as we are, your appreciation won't stop there. You'll want to keep learning about it, listening to it, exploring it and discussing it with others. That's where the Society of Sound comes in.

Visit the Society of Sound to:

- Find out more about Bowers & Wilkins, our products and our technologies
- Download lossless music, including super high-quality 24-bit albums
- Explore new music curated by Peter Gabriel and Real World Studios, and by the London Symphony Orchestra
- Learn from acoustic pioneers – the Society of Sound Fellows
- Join lively debates on sound topics with other sound enthusiasts in our blogs
- Discover the creative potential of sound

www.bowers-wilkins.com/sos



Web presence
 We have a growing portfolio of websites that give full details about our entire product portfolio, including videos and industry reviews. These websites are available in many of the world's major languages.

- We currently offer:
- www.bowers-wilkins.com (Global)
 - www.bowers-wilkins.co.uk (United Kingdom)
 - www.bowers-wilkins.de (Germany)
 - www.bowers-wilkins.fr (France)
 - www.bowers-wilkins.es (Spain)
 - www.bowers-wilkins.nl (Netherlands)
 - www.bowers-wilkins.it (Italy)
 - www.bowers-wilkins.ru (Russia)
 - www.bowers-wilkins.cn (China)
 - www.bowers-wilkins.jp (Japan)
 - www.bowers-wilkins.eu (European version)



Nautilus
What you hear from Nautilus is as different from ordinary speakers as what you see. Its sound and shape were created by straight and spiralling tapered tubes filled with absorbent wadding, designed to soak up wayward sound waves from the back of each drive unit and allow the sound from the front to reach you in as pure a state as you're ever likely to hear.



800 Diamond
The speaker of choice for the world's most demanding recording studios, and a legend among serious sound enthusiasts everywhere, the 800 Diamond is the top speaker in the range – and very probably the finest speaker you will ever hear. Quite simply, the ultimate loudspeaker.



802 Diamond
If you're looking for a speaker with the power, clarity and presence of the mighty 800 Diamond, but your listening area can't quite accommodate its studio-sized proportions, the 802 Diamond is the answer. Retaining the groundbreaking spherical head design of its bigger brother, it's the closest you'll get to true studio sound at home.



803 Diamond
The 803 Diamond might look almost as imposing as the 802 Diamond, but thanks to its smaller footprint and more traditional cabinet design, it will fit more comfortably into a home environment. With three massive 7in Rohacell bass drivers, it delivers almost as much bass as the 802 Diamond, filling even the largest of domestic rooms with rich, stunningly lifelike sound.



804 Diamond
As versatile as its smaller brother the 805 Diamond, the elegant, floorstanding 804 Diamond has an even more commanding acoustic presence, thanks to a true three-way design incorporating two Rohacell bass units, an FST midrange and a diamond dome tweeter delivering pin-sharp clarity all the way up the frequency range. A brilliant all-round performer for any occasion.



805 Diamond
The 805 Diamond is an industry world-first – the only speaker of its size and type to incorporate true studio-grade technology in the form of a diamond dome tweeter. Experience remarkable, lifelike sound from a discreet speaker that fits almost anywhere. (Separate floor stand in black or silver available)



HTM2 Diamond
If you're looking for a centre-channel dialogue speaker to use as part of an 800 Series Diamond home theatre set-up, HTM2 Diamond provides all the clarity and richness you need for larger viewing spaces. That's down to a three-way design featuring two dedicated bass drivers, our FST midrange – and, of course, a diamond dome tweeter.



HTM4 Diamond
Perfect for smaller viewing areas, the compact HTM4 Diamond centre-channel speaker will seamlessly balance the sound in an 800 Series Diamond home theatre set-up, thanks to highly advanced, complementary technology like a Kevlar bass/midrange driver and – for the first time ever – a diamond dome tweeter.



PM1
The Nautilus tube-loaded tweeter on top, the curved baffle; these are all included for technological, audio-related reasons. But they also come together visually, to create an aesthetically pleasing whole. Add to that the Mocha Gloss wood panels and matching stand, and we're confident that PM1 is not only the most refined sounding small speaker we have ever produced. It's also one of the most desirable.

Technical features	Nautilus tube loading Active crossover	Technical features	Free-mounted diamond dome tweeter Nautilus™ tube tweeter loading	Free-mounted diamond dome tweeter Nautilus tube tweeter loading	Free-mounted diamond dome tweeter Nautilus tube tweeter loading	Free-mounted diamond dome tweeter Nautilus tube tweeter loading	Free-mounted diamond dome tweeter Nautilus tube tweeter loading	Free-mounted diamond dome tweeter Nautilus tube tweeter loading	Free-mounted diamond dome tweeter Nautilus tube tweeter loading	Technical features	Nautilus tube loaded tweeter with carbon fibre reinforced aluminium dome Kevlar brand fibre cone bass / midrange Flowport	
Description	4-way tube-loaded loudspeaker system		Quad magnet tweeter motor	Quad magnet tweeter motor	Quad magnet tweeter motor	Quad magnet tweeter motor	Quad magnet tweeter motor	Quad magnet tweeter motor	Quad magnet tweeter motor	Description	2-way vented-box system	
Drive units	Nautilus tube loading Active crossover 1x ø25mm (1in) aluminium dome high-frequency 1x ø50mm (2in) aluminium dome upper midrange 1x ø100mm (4in) aluminium/polymer sandwich cone lower midrange 1x ø300mm (12in) aluminium cone bass		Kevlar brand fibre cone FST™ midrange Sphere/tube midrange enclosure Rohacell cone bass Dual magnet bass driver motor Matrix cabinet Flowport	Kevlar brand fibre cone FST midrange Sphere/tube midrange enclosure Rohacell cone bass Dual magnet bass driver motor Matrix cabinet Flowport	Kevlar brand fibre cone FST midrange Rohacell cone bass Dual magnet bass driver motor Matrix cabinet Flowport™	Kevlar brand fibre cone FST midrange Rohacell cone bass Dual magnet bass driver motor Matrix cabinet Flowport	Kevlar brand fibre cone bass / midrange Matrix cabinet Flowport	Kevlar brand fibre cone FST midrange Rohacell cone bass Dual magnet bass driver motor Matrix cabinet Flowport	Kevlar brand fibre cone bass / midrange Matrix cabinet Flowport	Kevlar brand fibre cone bass / midrange Matrix cabinet Flowport	Drive Units	1x ø25mm (1in) braced aluminium dome high-frequency 1x ø130mm (5in) woven Kevlar cone bass/mid-range
Frequency range (-6dB)	10Hz and 25kHz	Description	3-way vented-box system	3-way vented-box system	3-way vented-box system	2-way vented-box system	3-way vented-box system	2-way vented-box system	2-way vented-box system	Frequency range (-6dB)	42Hz and 60kHz	
Dimensions	Height: 1210mm (47.6in) Width: 430mm (16.9in) Depth: 1105mm (43.5in)	Drive Units	1x ø25mm (1in) diamond dome high-frequency 1x ø150mm (6in) woven Kevlar cone FST midrange 2x ø250mm (10in) Rohacell cone bass	1x ø25mm (1in) diamond dome high-frequency 1x ø150mm (6in) woven Kevlar cone FST midrange 2x ø200mm (8in) Rohacell cone bass	1x ø25mm (1in) diamond dome high-frequency 1x ø150mm (6in) woven Kevlar cone FST midrange 3x ø180mm (7in) Rohacell cone bass	1x ø25mm (1in) diamond dome high-frequency 1x ø150mm (6in) woven Kevlar cone FST midrange 2x ø165mm (6.5in) Rohacell cone bass	1x ø25mm (1in) diamond dome high-frequency 1x ø165mm (6.5in) woven Kevlar cone bass / midrange	1x ø25mm (1in) diamond dome high-frequency 1x ø150mm (6in) woven Kevlar cone FST midrange 2x ø180mm (7in) Rohacell cone bass	1x ø25mm (1in) diamond dome high-frequency 1x ø165mm (6.5in) woven Kevlar cone bass / midrange	Power handling	100W	
Net weight	Speaker: 44.5kg (98lb) Plinth: 42kg (92lb) Total: 86.5kg (190lb)	Frequency range (-6dB)	25Hz and 33kHz	27Hz and 33kHz	28Hz and 33kHz	30Hz and 33kHz	42Hz and 33kHz	35Hz and 33kHz	42Hz and 33kHz	Sensitivity	84dB spl (2.83V, 1m)	
Standard finishes	Midnight Blue, Black, Silver	Sensitivity	90dB spl (2.83V, 1m)	90dB spl (2.83V, 1m)	90dB spl (2.83V, 1m)	90dB spl (2.83V, 1m)	88dB spl (2.83V, 1m)	90dB spl (2.83V, 1m)	88dB spl (2.83V, 1m)	Impedance	8Ω (minimum 5.1Ω)	
		Impedance	8Ω (minimum 3.1Ω)	8Ω (minimum 3.5Ω)	8Ω (minimum 3.0Ω)	8Ω (minimum 3.0Ω)	8Ω (minimum 4.7Ω)	8Ω (minimum 3.1Ω)	8Ω (minimum 4.7Ω)	Dimensions	Height: 331mm (13in) Width: 191mm (7.5in) Depth: 250mm (9.8in) cabinet only	
		Crossover frequencies	350Hz, 4kHz	350Hz, 4kHz	350Hz, 4kHz	350Hz, 4kHz	4kHz	350Hz, 4kHz	4kHz	Weight	293mm (11.5in) including grilles and terminals 9.3kg (20.5lb)	
		Power handling	1000W	500W	500W	200W	120W	300W	120W	Finishes	Cabinet: Mocha Gloss Grille: Black cloth	
		Dimensions	Height: 1180mm (46.5in) (including rollers) Width: 450mm (17.7in) Depth: 645mm (25.4in)	1135mm (44.7in) (not including feet) 368mm (14.5in) 563mm (22.2in)	1164mm (45.8in) (not including feet) 306mm (12in) 457mm (18in)	1020mm (40.2in) (not including feet) 238mm (9.4in) 351mm (13.8in)	418mm (16.5in) 238mm (9.4in) 351mm (13.8in)	329mm (13in) 841mm (33.1in) 387mm (15.2in)	279mm (11in) 486mm (19.1in) 287mm (11.3in)			
		Weight	102kg (225lb)	72kg (159lb)	41kg (90lb)	27kg (59lb)	12kg (26lb)	31kg (68lb)	12.5kg (27lb)			
		Finishes	Cabinet: Cherrywood Rosenut Piano Black Gloss	Cherrywood Rosenut Piano Black Gloss	Cherrywood Rosenut Piano Black Gloss	Cherrywood Rosenut Piano Black Gloss	Cherrywood Rosenut Piano Black Gloss	Cherrywood Rosenut Piano Black Gloss	Cherrywood Rosenut Piano Black Gloss			
		Grille:	Black cloth	Black cloth	Black cloth	Black cloth	Black cloth	Black cloth	Black cloth			



CM10

The top-of-the-range CM10 breaks the mould for the CM Series – it's the only speaker in the range to incorporate the pioneering tweeter-on-top design found in our flagship 800 Diamond Series. And that's not the only feature this three-way floorstander shares in common with its studio-quality cousins.

CM9

This imposing floorstanding speaker will fill even the largest domestic spaces with spectacularly detailed, rich and lifelike sound. The three-way CM9 delivers truly commanding bass with the aid of twin 165mm (6.5in) paper/Kevlar cone drive units. The FST driver is specially developed for outstanding midrange performance, while the CM9's Nautilus tube-loaded aluminium dome tweeter keeps high frequencies crisp and sharp.

CM8

An elegantly proportioned, slimmed down version of the award-winning CM9, the true three-way CM8 will appeal to discerning customers who demand the very best sound quality, but have limited space in which to achieve it.

CM5

On a bookshelf or a speaker stand, CM5 will give you a wonderfully big, expansive sound even if you don't have the floorspace to match. It's a slightly larger speaker than its sibling CM1, with even higher sensitivity and power handling, and improved bass extension. It partners a sizable 165mm (6.5in) Kevlar cone bass/midrange driver with a Nautilus tube-loaded aluminium dome tweeter.

CM1

CM1 may be small, but thanks to the quality of its construction, it's capable of producing a sound that's a match for its bigger brothers. The partnership of a 130mm (5in) Kevlar cone bass/midrange driver with a Nautilus tube-loaded aluminium dome tweeter helps the speaker handle musical detail with ease across the full frequency spectrum.

CM Centre 2

If you want to get the most from your movies, CM Centre 2 is an ideal match for a pair of floorstanding CM9s or CM10s in larger home theatre set-ups. The three-way centre channel speaker features a similar driver line-up to CM9, including two 165mm (6.5in) paper/Kevlar cone bass drive units and a Nautilus tube-loaded aluminium dome tweeter.

CM Centre

This home theatre centre channel speaker thinks it's a Hi-Fi monitor. And it is. CM Centre's symmetrically arranged driver line-up of twin 130mm (5in) Kevlar cone bass/midrange units and a 25mm (1in) Nautilus tube-loaded aluminium dome tweeter are integrated by a minimalist, ear-tuned, first-order network made possible by the remarkably wide bandwidth of the drivers.

ASW10CM

The bass driver diaphragm of ASW10CM is constructed from a rugged, finely-tuned mix of paper pulp, Kevlar fibres and resin. Surprisingly compact, this subwoofer delivers serious bass power thanks to a 500W amplifier, equipped with audiophile-standard Class D circuitry to keep the unit cool and efficient under pressure. (Gloss Black only)

683

The largest speaker in the new 600 Series delivers outstanding power, accuracy and musicality. The floorstander features the new Decoupled Double Dome tweeter, an FST midrange driver and new Dual Layer aluminium bass drivers. The result is a loudspeaker ideal for both high-performance stereo and surround sound applications even in larger rooms, delivering serious performance and amazing value.

684

Room-filling sound without a room-filling speaker cabinet. Slimmer than ever, the 684 offers an amazing combination of serious floorstander power, spectacular audio performance and unbeatable value thanks to its new and vastly improved bass/midrange drivers and the Decoupled Double Dome tweeter.

685

At home on either a stand or bookshelf, the versatile new 685 delivers outstanding performance. Perfectly sized for most rooms, it combines new Decoupled Double Dome tweeters, Kevlar cones and Anti-Resonance Plugs, with the value for which the 600 Series is renowned.

686

Small is beautiful – at just 160mm wide, the 686 may be the most compact speaker in the new 600 Series, but don't underestimate its power and precision. That's thanks to its new Decoupled Double Dome tweeter, improved Kevlar driver and front-facing Flowport™.

Technical features	Free-mounted dual layer aluminium dome tweeter with Nautilus tube loading Kevlar brand fibre cone FST midrange Decoupled midrange and tweeter units Flowport	Nautilus tube loaded aluminium dome tweeter Kevlar brand fibre cone FST midrange Flowport	Nautilus tube loaded aluminium dome tweeter Kevlar brand fibre cone FST midrange Flowport	Nautilus tube loaded aluminium dome tweeter Kevlar brand fibre cone Flowport	Nautilus tube loaded aluminium dome tweeter Kevlar brand fibre cone Flowport	Technical features	Nautilus tube loaded aluminium dome tweeter Kevlar brand fibre cone bass / midrange Flowport	Nautilus tube loaded aluminium dome tweeter Kevlar brand fibre cone bass / midrange Flowport Magnetic shielding	Description	Active subwoofer system	Technical features	Decoupled Double Dome aluminium tweeter with Nautilus tube loading Kevlar brand fibre cone FST midrange driver Dual-layer aluminium cone bass driver Flowport	Decoupled Double Dome aluminium tweeter with Nautilus tube loading Kevlar brand fibre cone bass/midrange drivers Flowport	Decoupled Double Dome aluminium tweeter with Nautilus tube loading Kevlar brand fibre cone bass/midrange Flowport	Decoupled Double Dome aluminium tweeter with Nautilus tube loading Kevlar brand fibre cone bass/midrange Flowport	
Description	3-way vented-box system	3-way vented-box system	3-way vented-box system	2-way vented-box system	2-way vented-box system	Description	3-way vented-box system	2-way vented-box system	Description	18Hz and 25/140Hz	Description	3-way vented-box system	2-way vented-box system	2-way vented-box system	2-way vented-box system	
Drive Units	1x ø25mm (1in) aluminium dome high-frequency 1x ø150mm (6in) woven Kevlar cone FST midrange 3x ø165mm (6.5in) paper/Kevlar cone bass	1x ø25mm (1in) aluminium dome high-frequency 1x ø150mm (6in) woven Kevlar cone FST midrange 2x ø165mm (6.5in) paper/Kevlar cone bass	1x ø25mm (1in) aluminium dome high-frequency 1x ø130mm (5in) woven Kevlar cone FST midrange 2x ø130mm (5in) paper/Kevlar cone bass	1x ø25mm (1in) aluminium dome high-frequency 1x ø165mm (6.5in) woven Kevlar cone bass/midrange	1x ø25mm (1in) aluminium dome high-frequency 1x ø130mm (5in) woven Kevlar cone bass/midrange	1x ø25mm (1in) aluminium dome high-frequency 1x ø100mm (4in) Kevlar cone FST midrange 2x ø165mm (6.5in) Paper/Kevlar cone bass	Drive Units	1x ø25mm (1in) aluminium dome high-frequency 1x ø100mm (4in) Kevlar cone FST midrange 2x ø165mm (6.5in) Paper/Kevlar cone bass	1x ø25mm (1in) aluminium dome high-frequency 2x ø130mm (5in) woven Kevlar cone bass/midrange	Frequency range (-6dB)	500W	Drive units	1x ø25mm (1 in) aluminium dome high-frequency 1x ø150mm (6 in) woven Kevlar cone FST midrange 2x ø165mm (6.5 in) aluminium cone bass	1x ø25mm (1 in) aluminium dome high-frequency 2x ø130mm (5 in) woven Kevlar cone bass/midrange	1x ø25mm (1 in) aluminium dome high-frequency 1x ø165mm (6.5 in) woven Kevlar cone bass / midrange	1x ø25mm (1 in) aluminium dome high-frequency 1x ø130mm (5 in) woven Kevlar cone bass/midrange
Frequency range (-6dB)	28Hz and 50kHz	30Hz and 50kHz	43Hz and 50kHz	45Hz and 50kHz	45Hz and 50kHz	Frequency range (-6dB)	40Hz and 50kHz	45Hz and 50kHz	Amplifier power output	33kΩ	Frequency range	-6dB at 30Hz and 50kHz	-6dB at 45Hz and 50kHz	-6dB at 45Hz and 50kHz	-6dB at 54Hz and 50kHz	
Power handling	200W	200W	150W	120W	100W	Power handling	200W	120W	Impedance	8Ω (minimum 3.1Ω)	Power handling	200W	200W	100W	100W	
Sensitivity	90dB spl (2.83V, 1m)	89dB spl (2.83V, 1m)	88dB spl (2.83V, 1m)	88dB spl (2.83V, 1m)	84dB spl (2.83V, 1m)	Sensitivity	89dB spl (2.83V, 1m)	85dB spl (2.83V, 1m)	Impedance	8Ω (minimum 3.0Ω)	Sensitivity	89dB spl (2.83V, 1m)	87dB spl (2.83V, 1m)	87dB spl (2.83V, 1m)	85dB spl (2.83V, 1m)	
Impedance	8Ω (minimum 3.1Ω)	8Ω (minimum 3.0Ω)	8Ω (minimum 3.0Ω)	8Ω (minimum 3.7Ω)	8Ω (minimum 5.1Ω)	Impedance	8Ω (minimum 3.7Ω)	8Ω (minimum 4.3Ω)	Dimensions	Height: 325 mm (12.8in) Width: 325 mm (12.8in) Depth: 362mm (14.3in)	Impedance	8Ω (minimum 3.0Ω)	8Ω (minimum 4.0Ω)	8Ω (minimum 4.0Ω)	8Ω (minimum 5.2Ω)	
Dimensions	Height: 990mm (39 in) cabinet only 1087mm (42.8 in) including tweeter and plinth but not feet Width: 200mm (7.9 in) cabinet only 366mm (14.4 in) including plinth Depth: 337mm (13.3 in) cabinet only 364mm (14.3 in) inc. grilles and terminals but not plinth 414mm (16.3 in) including plinth	Height: 990mm (39 in) cabinet only 1025mm (40.4 in) including plinth but not feet Width: 200mm (7.9 in) cabinet only 320mm (12.6 in) including plinth Depth: 300mm (11.8 in) cabinet only 321mm (12.6 in) inc. grille and terminals but not plinth 370mm (14.6 in) including plinth	Height: 960mm (37.8 in) not including feet Width: 165mm (6.5 in) cabinet only 252mm (9.9 in) over plinth 277mm (10.9 in) cabinet, grille and terminals only 298mm (11.7 in) over plinth	Height: 340mm (13.4in) Width: 200mm (7.8in)	Height: 280mm (11 in) Width: 165mm (6.5in)	Height: 301mm (11.9in) Width: 187kg (41.1lb) Finishes: Wengé Rosenut Gloss Black Satin White	Dimensions	Height: 218mm (8.6in) Width: 590mm (23.2in) Depth: 301mm (11.9in)	Height: 166.5mm (6.6in) Width: 480mm (18.9in) Depth: 255mm (10 in) cabinet only 275mm (10.8 in) including grille and terminals Width: 11.5kg (25.3lb) Finishes: Wengé Rosenut Gloss Black Satin White	Weight	19.5kg (43lb)	Dimensions	Height: 985mm (38.8 in) cabinet only 1020mm (40.2 in) including plinth but not feet Width: 190mm (7.5 in) cabinet only 320mm (12.6 in) over plinth Depth: 364mm (14.3 in) cabinet, grille and terminals only 370mm (14.6 in) over plinth	Height: 920mm (36.2 in) cabinet only 955mm (37.6 in) including plinth but not feet Width: 160mm (6.3 in) cabinet only 235mm (9.3 in) over plinth Depth: 234mm (9.2 in) cabinet, grille and terminals only 238mm (9.4 in) over plinth	Height: 345mm (13.5 in) Width: 190mm (7.5 in)	Height: 315mm (12.4 in) Width: 160mm (6.3 in)
Weight	33.5kg (73.7lb)	26.6kg (58.5lb)	19.5kg (43lb)	8.9kg (19.6lb)	6.7kg (14.7lb)	Weight	18.7kg (41.1lb)	11.5kg (25.3lb)	Weight	Gloss Black	Weight	27.2kg (59.7 lb)	14.2kg (31.2 lb)	6.8kg (14.9 lb)	4.6kg (10.1 lb)	
Finishes	Wengé Rosenut Gloss Black Satin White	Wengé Rosenut Gloss Black Satin White	Wengé Rosenut Gloss Black Satin White	Wengé Rosenut Gloss Black Satin White	Wengé Rosenut Gloss Black Satin White	Finishes	Wengé Rosenut Gloss Black	Wengé Rosenut Gloss Black Satin White	Finishes	Gloss Black	Finishes	Cabinet: Black Ash White Black Light Grey Grille: Black White Black Light Grey	Cabinet: Black Ash White Black Light Grey Grille: Black White Black Light Grey	Cabinet: Black Ash White Black Light Grey Grille: Black White Black Light Grey	Cabinet: Black Ash White Black Light Grey Grille: Black White Black Light Grey	

**HTM61**

The larger of two centre channels in the new 600 Series, the HTM61 is ideal for delivering important dialogue in a room-filling, high-performance home theatre system.

HTM62

The smaller of the two centre speakers in the new 600 Series is the perfect solution for a modestly sized, but high performance, home theatre system.

**DS3**

DS3 is a wall-mounted surround speaker that can operate in both dipole mode, to create the all-enveloping effect of a large auditorium, or monopole mode, in which the sound from side or rear is more precisely located and less diffuse. The choice depends on the room conditions, the size of the audience and viewing material.

**ASW610XP**

A powerful yet compact subwoofer to add extra weight to the sound of music or movies. The long throw of the 250mm (10in) composite paper-Kevlar cone allows it to move the large volumes of air needed for accurate, punchy bass. The unit delivers serious power thanks to its 500W Class D amplifier.

ASW610

The ASW610 subwoofer presents a very happy medium between the more diminutive ASW608 and the all-out power of ASW610XP. Its long-throw 250mm (10in) driver allows ASW610 to move the large volumes of air needed for high-quality low-frequency output, and its audiophile-standard 200W Class D amplifier keeps the compact unit running cool, even when the music or movie action is whipping up a storm.

**ASW608**

For big sound in smaller spaces, you can't beat ASW608, the most compact of the 600 Series subwoofers. The speaker's long-throw 200mm (8in) driver allows ASW608 to move the large volumes of air needed for high-quality low-frequency output, and its audiophile-standard 200W Class D amplifier keeps the unit running cool, even at very high volume levels.

**MM-1**

MM-1s aren't like other computer speakers. They're true Hi-Fi speakers, shrunk to fit on your desktop. So they don't just look great – they sound amazing, transforming your humble laptop or desk monitor into a superb Hi-Fi stereo sound system.

**PV1D**

When we decided to create a powerful new compact subwoofer for use in home theatre set-ups, we weren't going to contradict nature. Instead of a box, we based it on a bubble; the natural way of containing internal pressures. In the PV1D, air pressures are dispersed evenly around a continuous shell, reducing unwanted vibrations to a bare minimum. Coupled with a back-to-back drive unit layout that improves balance and control, you have subwoofer ready for anything cinema sound can throw at it.

**DB1**

With the prodigious power required for home theatre, but also providing enough control and response to satisfy the demands of an audiophile Hi-Fi system, DB1 is not only the best subwoofer we've ever produced – it's also the most versatile. That's thanks in large part to its opposed twin-driver design, digital signal processing, and dedicated 1,000W amplifier.

Technical features	Decoupled Double Dome aluminium tweeter with Nautilus tube loading Kevlar brand fibre cone FST midrange driver Dual-layer aluminium cone bass driver Flowport	Decoupled Double Dome aluminium tweeter with Nautilus tube loading Kevlar brand fibre cone bass/midrange Flowport	Description	2-way closed-box selectable dipole/monopole surround system	Description	Active closed-box subwoofer system	Active closed-box subwoofer system	Active closed-box subwoofer system	Technical features	Active 2-way speaker High quality digital amplifier	Technical features	Paper-Kevlar/Aluminium cone drivers, Balanced drive, Digital Signal Processing, 400W Class-D amplifier	Technical features	Rohacell cone drivers Balanced drive, Digital Signal Processing, Room acoustics compensation 1000W Class-D amplifier
Description	3-way vented-box system	2-way vented-box system	Drive Units	1x ø25mm (1in) aluminium dome high-frequency 2x ø80mm (3in) midrange/high frequency 1x ø130mm (5in) woven Kevlar cone bass/midrange	Drive Units	1x ø250mm (10in) paper/Kevlar cone long-throw 76mm (3 in) dia voice coil - dual suspension diecast chassis	1x ø250mm (10in) paper/Kevlar cone long-throw	1x ø200mm (8in) paper/Kevlar cone long-throw	Description	Fully active 2.0 Multimedia speaker system	Description	Active balanced-drive closed-box subwoofer system	Description	Active balanced-drive closed-box subwoofer system
Drive units	1x ø25mm (1 in) aluminium dome high-frequency 1x ø100mm (4 in) woven Kevlar cone FST midrange 2x ø165mm (6.5 in) aluminium cone bass	1x ø25mm (1 in) aluminium dome high-frequency 2x ø130mm (5 in) woven Kevlar cone bass/midrange	Frequency range (-6dB)	63Hz and 42kHz	Frequency range (-6dB)	18Hz and 25/140Hz adjustable (EQ at A)	20Hz and 25/140Hz adjustable (EQ at A)	23Hz and 25/140Hz adjustable (EQ at A)	Inputs	Auxiliary (3.5mm mini jack Analogue 2v RMS) Mini USB 2.0 (PC/Mac audio streaming)	Inputs	Active balanced-drive closed-box subwoofer system	Inputs	Stereo Line In (2x RCA Phono) Mono (LFE) Line In (RCA Phono)
Frequency range	-6dB at 42Hz and 50 kHz	-6dB at 48Hz and 50kHz	Amplifier power output	100W	Amplifier power output	500W	200W	200W	Outputs	Headphone 3.5mm mini jack	Outputs	2x ø200mm (8in) Paper-Kevlar/Aluminium cone long-throw	Outputs	2x ø300mm (12in) Rohacell cone long-throw
Power handling	150W	120W	Dimensions	Height: 249mm (9.8in) Width: 387mm (15.3in) Depth: 186mm (7.3in)	Dimensions	Height: 325mm (12.8in) no feet Width: 325mm (12.8in) Depth: 375mm (14.8in) including grille and controls	310mm (12.2in) no feet 310mm (12.2in) 375mm (14.8in) including grille and controls	260mm (10.2in) no feet 260mm (10.2in) 330mm (13in) including grille and controls	Drive units	2x ø25mm (1in) Nautilus tube aluminium tweeter 2x ø75mm (3in) mid and low range	Drive units	2x ø200mm (8in) Paper-Kevlar/Aluminium cone long-throw	Drive units	2x ø300mm (12in) Rohacell cone long-throw
Sensitivity	88dB spl (2.83V, 1m)	87dB spl (2.83V, 1m)	Weight	5.2kg (11.5lb)	Weight	15.5kg (34.4lb)	12.5kg (27.6lb)	8.85kg (19.5lb)	Frequency range	-6dB at 38Hz and 22kHz	Frequency range (-6dB)	6.5Hz and 570Hz	Frequency range (-6dB)	15Hz and 250Hz
Impedance	8Ω (minimum 3.0Ω)	8Ω (minimum 4.0Ω)	Finishes	Black only	Finishes	Black White Grey	Black White Grey	Black White Grey	Amplifier power output	4x 18W	Amplifier power output	400W	Amplifier power output	1000W continuous
Dimensions	Height: 218mm (8.6 in) Width: 590mm (23.2 in) Depth: 304mm (12 in) cabinet, grille and terminals	160mm (6.3 in) 480mm (18.9 in) 279mm (11 in) cabinet, grille and terminals	Rated power consumption		Rated power consumption				Standby power consumption	16V DC on product	Rated power consumption	150W	Rated power consumption	135W
Weight	17.2kg (37.8 lb)	7.9kg (17.3 lb)	Standby power consumption		Standby power consumption				Input impedance	100kΩ	Standby power consumption	<1W	Standby power consumption	<1W
Finishes	Cabinet: Black Ash White Grille: Black Light Grey	Black Ash White Black Light Grey	Input impedance		Input impedance				Input voltage	Universal AC 100 to 240V, 50 to 60Hz on power supply adaptor	Input impedance	100kΩ	Input impedance	15kΩ
			Functions		Functions				Rated power consumption	12W	Functions	5 Presets, Input sensitivity (analogue), Gain (digital), Low-pass filter frequency, Low-pass filter slope, Low-pass filter phase Auto on/standby, Trigger on/standby, Trigger preset switching, RS-232 automation control	Functions	5 Presets, Input sensitivity, Gain Low-pass filter frequency, Low-pass filter slope, Low-pass filter phase, Graphic equalisation, Room compensation, Auto on/standby, Trigger on/standby Trigger preset switching RS-232 automation control
			Inputs		Inputs				Standby power consumption	<0.8W	Inputs	Stereo Line In (2x RCA Phono) Mono (LFE) Line In (5m cable supplied)	Inputs	Stereo Line In (2x RCA Phono) Mono (LFE) Line In (RCA Phono) Mono (LFE) Line In (XLR balanced)
			Dimensions	Height: 170mm (6.7in) Width: 100mm (4in) Depth: 100mm (4in)	Dimensions	Height: 342mm (13.5in) Width: 270mm (10.6in) Depth: 358mm (14.1in)			Net weight	0.9kg per speaker	Dimensions	Height: 342mm (13.5in) Width: 270mm (10.6in) Depth: 358mm (14.1in)	Dimensions	Height: 490mm (19.3in) Width: 460mm (18.1in) Depth: 410mm (16.2in)
			Weight		Weight				Accessories supplied	Remote control Mains power supply adaptor Mains power cable Mini USB to USB Type A cable	Weight	18.7kg (41lb)	Weight	44kg (97lb)
			Finishes		Finishes						Finishes	Matte Black, Matte White	Finishes	Cherrywood Rosanut Gloss Black
			Grille		Grille						Grille		Grille	Black cloth

**M-1**

Sleek, compact, yet packing a powerful punch, the M-1 satellite speaker is the backbone of both our Mini Theatre systems, taking all five positions in a surround-sound set-up. From the inside out, the M-1 was conceived as a unified system. Its design has evolved in a totally integrated way, from the custom-made crossover and drive units to the two-piece clamshell cabinet. The result? Ultra-wide dispersion, pin-point accurate imaging and full-range performance.

**Panorama 2**

Craving the drama and excitement of surround sound, but reluctant to fill your room with speakers? Panorama 2 is the answer. The soundbar's drive unit layout mimics the effect of a multi-speaker surround sound system, with an immersive soundstage wide enough for everyone in the room to experience. Films, music and games come to life in a way that you would never think possible. And all from one discreet speaker.

**Zeppelin Air**

Zeppelin Air is famous for its striking looks, uncompromising build quality and stunning, room-filling sound. And with Apple's AirPlay technology built in, you can choose to either dock your iPhone using the Lightning connector, or play and control music wirelessly from wherever you are, using your smartphone, tablet, Mac® or PC.

**Z2**

If you won't settle for less than great sound even when space is limited, Z2 is the iPhone speaker dock for you. Z2 brings you remarkable performance, intelligent design and effortless wireless connectivity, all contained within a streamlined, compact package that's perfect for desktops and bedside tables.

**A7**

A7 introduces an exciting new concept in home audio: an entirely wireless Hi-Fi quality music system. Powered by audiophile-grade Bowers & Wilkins technology, it's quite simply the best-sounding system in its class.

**A5**

If you're looking for great wireless audio combined with minimal visual impact, the versatile A5 system is an ideal choice. It delivers a remarkably solid acoustic performance, and packs a serious sonic punch, thanks to some ingenious acoustic innovations.

Description	2-way vented-box system	Description	Integrated A/V Sound System
Drive Units	1x ø25mm (1in) metal dome high-frequency 1x ø100mm (4in) woven glass fibre cone bass/midrange	Features	Dolby Digital Dolby PLII DTS Stereo High quality digital amplifier
Frequency range (-6dB)	55Hz and 50kHz	Inputs	3x HDMI 1x 3.5mm Analogue/digital combi 3.5mm mini jack
Sensitivity	85dB spl (2.83V, 1m)	Outputs	1x HDMI (supporting ARC) Subwoofer pre out (RCA Phono)
Impedance	8Ω (minimum 4Ω)	Drive units	2x ø90mm (3.5in) subwoofers 2x ø75mm (3.0in) midrange 4x ø75mm (3.0in) surround channels 1x ø25mm (1in) metal dome tweeter
Recommended amp power	20W – 100W into 8Ω on unclipped programme	Frequency range	(-6dB) 35Hz and 50kHz
Dimensions Height:	248mm (9.8in) mounted on table stand	Amplifier power output	1x 50W woofer 5x 25W centre & surround
Width:	114mm (4.5in) mounted on table stand	Input voltage	Universal AC 100 to 240V, 50 to 60Hz
Depth:	162mm (6.4in) mounted on table stand	Rated power consumption	36W
Weight	2.3kg (5lb) including table stand	Standby power consumption	<0.5W
Finishes	Cabinet: Matte White or Matte Black	Dimensions Height:	125mm (5 in)
	Grille: Matte White or Matte Black perforated steel to match	Width:	1100mm (44 in)
		Depth:	181mm (7.24 in)
		Net weight	14.1kg
		Accessories supplied	Remote control Mains power cable

Description	iPod/iPhone Speaker System Wireless Music System	Description	iPod/iPhone Speaker System Wireless Music System
Features	Apple Lightning docking connector Apple AirPlay High quality Class D amplifier Switch mode power supply	Features	Apple Lightning docking connector Apple AirPlay High quality Class D amplifier Switch mode power supply
Inputs	Apple iPod/iPhone Lightning connector RJ45 Ethernet Auxiliary - analogue / optical digital (3.5mm mini jack) Type B USB 2.0 (PC/Mac audio streaming)	Inputs	Apple iPod/iPhone Lightning connector RJ45 Ethernet Auxiliary - analogue / optical digital (3.5mm mini jack) Type B USB 2.0 (PC/Mac audio streaming)
Outputs	N/A	Outputs	N/A
Drive units	2x ø25mm (1in) Nautilus tube aluminium tweeter 2x ø75mm (3in) midrange 1x ø125mm (5in) woofer	Drive units	2x ø25mm (1in) Nautilus tube aluminium tweeter 2x ø75mm (3in) midrange 1x ø125mm (5in) woofer
Frequency response	51Hz to 36kHz +/- 3dB on reference axis	Frequency response	51Hz to 36kHz +/- 3dB on reference axis
Frequency range	-6dB at 36Hz and 42kHz	Frequency range	-6dB at 36Hz and 42kHz
Amplifier power output	2x 25W tweeter 2x 25W midrange 1x 50W woofer	Amplifier power output	2x 25W tweeter 2x 25W midrange 1x 50W woofer
Input voltage	Universal AC 100 to 240V, 50 to 60Hz	Input voltage	Universal AC 100 to 240V, 50 to 60Hz
Rated power consumption	100W	Rated power consumption	100W
Standby power consumption	<0.5W	Standby power consumption	<0.5W
Dimensions Height:	173mm (6.8in)	Dimensions Height:	173mm (6.8in)
Width:	640mm (25.2in)	Width:	640mm (25.2in)
Depth:	208mm (8.2in)	Depth:	208mm (8.2in)
Net weight	6.2kg (13.5lb)	Net weight	6.2kg (13.5lb)
Accessories supplied	Remote control Mains power cable	Accessories supplied	Remote control Mains power cable
AirPlay compatibility	iPhone, iPod touch and iPad with iOS 4.3.3 or later, Mac with OS X Mountain Lion, or Mac and PC with iTunes 10.2.2 or later.	AirPlay compatibility	iPhone, iPod touch and iPad with iOS 4.3.3 or later, Mac with OS X Mountain Lion, or Mac and PC with iTunes 10.2.2 or later.
Dock compatibility	iPhone 5, iPod touch (5th generation), and iPod nano (7th generation).	Dock compatibility	iPhone 5, iPod touch (5th generation), and iPod nano (7th generation).
Enclosure	Gloss black with stainless steel trim	Enclosure	Gloss black with stainless steel trim
Grille	Black cloth	Grille	Black cloth
Finishes	-	Finishes	-

Description	iPod/iPhone Speaker System Wireless Music System	Description	iPod/iPhone Speaker System Wireless Music System
Features	Apple Lightning docking connector Apple AirPlay High quality Class D amplifier Switched mode power supply Capacitive touch volume keys	Features	Apple Lightning docking connector Apple AirPlay High quality Class D amplifier Switched mode power supply Capacitive touch volume keys
Inputs	Apple iPod/iPhone Lightning connector RJ45 Ethernet Auxiliary (3.5mm mini jack Analogue 1v RMS)	Inputs	Apple iPod/iPhone Lightning connector RJ45 Ethernet Auxiliary (3.5mm mini jack Analogue 1v RMS)
Outputs	N/A	Outputs	N/A
Drive units	2x ø87.5mm (3.5in) full range	Drive units	2x ø87.5mm (3.5in) full range
Frequency response	50Hz to 20kHz +/- 3dB on reference axis	Frequency response	50Hz to 20kHz +/- 3dB on reference axis
Frequency range	-6dB at 42Hz and 22kHz	Frequency range	-6dB at 42Hz and 22kHz
Amplifier power output	2x 20W	Amplifier power output	2x 20W
Input voltage	Universal AC 100 to 240V, 50 to 60Hz on power supply adaptor 16V DC on product	Input voltage	Universal AC 100 to 240V, 50 to 60Hz on power supply adaptor 16V DC on product
Rated power consumption	36W	Rated power consumption	36W
Standby power consumption	<0.5W	Standby power consumption	<0.5W
Dimensions Height:	180mm (7.1in)	Dimensions Height:	180mm (7.1in)
Width:	320mm (12.6in)	Width:	320mm (12.6in)
Depth:	100mm (4in)	Depth:	100mm (4in)
Net weight	2.6kg (5.5lb)	Net weight	2.6kg (5.5lb)
Accessories supplied	Remote control Mains power supply adaptor Mains power cable	Accessories supplied	Remote control Mains power supply adaptor Mains power cable
AirPlay compatibility	iPhone, iPod touch and iPad with iOS 4.3.3 or later, Mac with OS X Mountain Lion, or Mac and PC with iTunes 10.2.2 or later.	AirPlay compatibility	iPhone, iPod touch and iPad with iOS 4.3.3 or later, Mac with OS X Mountain Lion, or Mac and PC with iTunes 10.2.2 or later.
Dock compatibility	iPhone 5, iPod touch (5th generation), and iPod nano (7th generation).	Dock compatibility	iPhone 5, iPod touch (5th generation), and iPod nano (7th generation).
Enclosure	Gloss filled ABS	Enclosure	Gloss filled ABS
Grille	Metal	Grille	Metal
Finishes	Black White	Finishes	Black White

Description	Wireless Music System	Description	Wireless Music System
Features	Apple AirPlay High quality Class D amplifier Switch mode power supply	Features	Apple AirPlay High quality Class D amplifier Switch mode power supply
Inputs	RJ45 Ethernet Auxiliary (3.5mm mini jack Analogue 2v RMS; Digital Optical mini TOSLINK) Type B USB 2.0 (PC/Mac audio streaming)	Inputs	RJ45 Ethernet Auxiliary (3.5mm mini jack Analogue 2v RMS; Digital Optical mini TOSLINK) Type B USB 2.0 (PC/Mac audio streaming)
Drive units	2x ø25mm (1in) Nautilus tube aluminium tweeter 2x ø75mm (3in) midrange 1x ø150mm (6in) woofer	Drive units	2x ø25mm (1in) Nautilus tube aluminium tweeter 2x ø75mm (3in) midrange 1x ø150mm (6in) woofer
Frequency response	40Hz to 36kHz +/- 3dB on reference axis	Frequency response	40Hz to 36kHz +/- 3dB on reference axis
Frequency range	-6dB at 36Hz and 42kHz	Frequency range	-6dB at 36Hz and 42kHz
Amplifier power output	2x 25W tweeter 2x 25W midrange 1x 50W woofer	Amplifier power output	2x 25W tweeter 2x 25W midrange 1x 50W woofer
Input voltage	Universal AC 100 to 240V, 50 to 60Hz	Input voltage	Universal AC 100 to 240V, 50 to 60Hz
Rated power consumption	100W	Rated power consumption	100W
Standby power consumption	<0.5W	Standby power consumption	<0.5W
Dimensions Height:	220mm (8.5in)	Dimensions Height:	220mm (8.5in)
Width:	360mm (14in)	Width:	360mm (14in)
Depth:	160mm (6.5in)	Depth:	160mm (6.5in)
Net weight	5.7kg (12.5lb)	Net weight	5.7kg (12.5lb)
Accessories supplied	Remote control Mains power cable	Accessories supplied	Remote control Mains power cable
AirPlay compatibility	iPhone, iPod touch and iPad with iOS 4.3.3 or later, Mac with OS X Mountain Lion, or Mac and PC with iTunes 10.2.2 or later.	AirPlay compatibility	iPhone, iPod touch and iPad with iOS 4.3.3 or later, Mac with OS X Mountain Lion, or Mac and PC with iTunes 10.2.2 or later.
Enclosure	Glass filled ABS	Enclosure	Glass filled ABS
Grille	Black cloth	Grille	Black cloth

Description	Wireless Music System	Description	Wireless Music System
Features	Apple AirPlay High quality Class D amplifier Switch mode power supply	Features	Apple AirPlay High quality Class D amplifier Switch mode power supply
Inputs	RJ45 Ethernet Auxiliary (3.5mm mini jack Analogue 1v RMS)	Inputs	RJ45 Ethernet Auxiliary (3.5mm mini jack Analogue 1v RMS)
Drive units	2x ø25mm (1in) Nautilus tube aluminium tweeter 2x ø100mm (4in) mid and low range	Drive units	2x ø25mm (1in) Nautilus tube aluminium tweeter 2x ø100mm (4in) mid and low range
Frequency response	47Hz to 22kHz +/- 3dB on reference axis	Frequency response	47Hz to 22kHz +/- 3dB on reference axis
Frequency range	-6dB at 40Hz and 24kHz	Frequency range	-6dB at 40Hz and 24kHz
Amplifier power output	2x 20W tweeter 2x 20W midrange	Amplifier power output	2x 20W tweeter 2x 20W midrange
Input voltage	Universal AC 100 to 240V, 50 to 60Hz on power supply adaptor 16V DC on product	Input voltage	Universal AC 100 to 240V, 50 to 60Hz on power supply adaptor 16V DC on product
Rated power consumption	48W	Rated power consumption	48W
Standby power consumption	<0.5W	Standby power consumption	<0.5W
Dimensions Height:	180mm (7in)	Dimensions Height:	180mm (7in)
Width:	300mm (12in)	Width:	300mm (12in)
Depth:	120mm (4.75in)	Depth:	120mm (4.75in)
Net weight	3.8kg (8.5lb)	Net weight	3.8kg (8.5lb)
Accessories supplied	Remote control Mains power supply adaptor Mains power cable	Accessories supplied	Remote control Mains power supply adaptor Mains power cable
AirPlay compatibility	iPhone, iPod touch and iPad with iOS 4.3.3 or later, Mac with OS X Mountain Lion, or Mac and PC with iTunes 10.2.2 or later.	AirPlay compatibility	iPhone, iPod touch and iPad with iOS 4.3.3 or later, Mac with OS X Mountain Lion, or Mac and PC with iTunes 10.2.2 or later.
Enclosure	Glass filled ABS	Enclosure	Glass filled ABS
Grille	Black cloth	Grille	Black cloth

**P7**

Our flagship P7 headphones set a whole new standard for portable Hi-Fi sound quality. Drawing on everything we know about speaker technology, and featuring revolutionary new drive units inspired by our stand-alone Hi-Fi speakers, these premium over-the-ear headphones combine a truly astonishing, immersive sound with impeccable build quality.

**P5**

Experience the ultimate balance of comfort, portability and sound quality with P5, the noise-isolating headphones from Bowers & Wilkins. Combining natural Hi-Fi sound, beautiful materials and a luxuriously comfortable fit, it makes longer listening sessions a pleasure. Think of it as your own personal concert – to go.

**P3**

P3 combines pristine audio performance with maximum wearability. These slimline headphones fit lightly and snugly on your head, and fold up to stow away in your jacket pocket or their own hard-shell carry case. And they produce a remarkably natural, detailed sound on the move, thanks to some major technological innovations that reduce distortion to a minimum.

**C5**

C5 in-ear headphones bring you natural acoustics and fit so comfortably and securely you'll forget you're wearing them. So you can lose yourself in unadulterated sound, even when you're on the move.

	P7	P5	P3	C5
Description	Circum aural headphone	Supra aural headphone	Supra aural headphone	Intra aural headphone
Features	Dynamic driver Nylon damped diaphragm CCAW coil Dual cavity cushion Absorbing wadding Changeable ear cushions Detachable cable Folding (hinged) design	Mylar damped laminate diaphragm Changeable ear cushions Detachable cable Folding (flatable) design	Mylar damped laminate diaphragm Changeable ear cushions Detachable cable Folding (hinged) design	Secure loop Micro porous filter CCAW coil
Inputs	3.5mm stereo mini jack (on cable) 2.5mm mini jack (on Headphone)	3.5mm stereo mini jack (CTIA 4-pole)	3.5mm stereo mini jack (CTIA 4-pole)	3.5mm stereo mini jack (CTIA 4-pole)
Drive units	2x ø40mm	2x ø40mm (1.6in) full range	2x ø30mm (1.2in) full range	2x ø9mm (0.4in) full range
Frequency range	10Hz to 20kHz	10Hz to 20kHz	10Hz to 20kHz	10Hz to 20kHz
Impedance	22 ohms	26 ohms	34 ohms	32 ohms
Distortion (THD)	<0.3% (1kHz/10mW)	100dB@150Hz <0.2% for 80Hz to 20kHz <1% for 20Hz to 20kHz	100dB@150Hz <0.4% for 80Hz to 20kHz <1% for 20Hz to 20kHz	100dB@150Hz <0.2% for 80Hz to 20kHz <1% for 20Hz to 20kHz
Sensitivity	111dB/V at 1kHz	115dB/V at 1kHz	111dB/V at 1kHz	118dB/V at 1kHz
Max. input power	50mW	50mW	50mW	
Cable length	1.2m	1.2m	1.2m	1.2m
Net weight	290g	195g	130g	20g
Accessories supplied	Universal cable (3.5 mm stereo to stereo mini jack) Carry case	Universal cable (3.5mm stereo 2-pole mini jack) Carry case	Universal cable (3.5mm stereo 2-pole mini jack) Protective hard case	Spare ear tips Protective pouch
Apple compatibility	The remote and mic are supported by iPhone 3GS and later, iPod touch 2nd generation & later, iPad all models. The remote is supported by iPod classic® all models, iPod nano® 4th generation & later, iPod shuffle® 3rd generation & later.	The remote and mic are supported by iPhone 3GS and later, iPod touch 2nd generation & later, iPad all models. The remote is supported by iPod classic® all models, iPod nano® 4th generation & later, iPod shuffle® 3rd generation & later.	The remote and mic are supported by iPhone 3GS and later, iPod touch 2nd generation & later, iPad all models. The remote is supported by iPod classic® all models, iPod nano® 4th generation & later, iPod shuffle 3rd generation & later.	The remote and mic are supported only by iPod nano (4th generation and later), iPod classic (120GB, 160GB), iPod touch (2nd generation and later), iPhone 3GS, iPhone4 and iPad. The remote is supported by iPod shuffle (3rd generation or later). Audio is supported by all iPod models. Audio will work with most computers, phones and music player with a standard headphone output.
Finishes	Real leather and metal	Black	Black White Blue Red	Gloss Black Satin Titanium

**CT8 LR**

At the heart of this front channel speaker is technology borrowed directly from our flagship 800 Series Diamond: twin Rohacell bass drivers, a woven Kevlar FST midrange driver and a metal dome high-frequency tweeter. The spherical midrange/tweeter head can be angled for perfect alignment with the listening area.

**CT8.2 LCR**

The CT8.2 LCR is the latest addition to the very successful CT800 Series. Its unique modular baffle design allows for it to be used as a LCR speaker in either vertical or horizontal positions. It features: twin Paper/Kevlar bass drivers, a woven Kevlar FST midrange driver and a metal dome high-frequency tweeter in a passive crossover design.

**CT8 CC**

The CT8 CC centre speaker borrows its Nautilus-inspired driver line-up from the CT8 LR front speaker. The same Rohacell bass drivers, woven Kevlar FST midrange driver and metal dome high-frequency tweeter are employed, but arranged with the twin bass drivers positioned either side of the combined midrange and high-frequency adjustable pod.

**CT8 DS**

To generate an authentically three-dimensional listening experience, the CT8 DS surround speaker offers both dipole and monopole surround dispersion. Along with forward-facing Kevlar FST midrange and metal-dome high-frequency drivers, the CT8 DS also carries side-facing Kevlar midrange/high-frequency drivers.

**CT8.4 LCRS**

The CT8.4 LCRS is designed as an alternative to the CT8 DS when space is at a premium: it's a smaller, more compact vertical surround sound speaker that generates a similarly 3D experience. It also packs enough power to act as a stand-alone loudspeaker when positioned front, side or rear.

**CT8 SW**

Used with each CT8 LR, this passive subwoofer is designed to extend the front channel speaker's bandwidth down to 13Hz, perfectly reproducing low frequency signals without compromising dynamics and imaging. Closed-box loading, a 380mm (15in) Rohacell driver and a 70 litre Matrix braced enclosure mean home theatre bass will never be quite the same again.

**CT8 XO Mk2**

The CT8 XO Mk2 is the conductor for the CT800 home theatre orchestra: an active crossover/equaliser providing all the necessary filtering and control functions to make sure that your system sings in perfect harmony.

	CT8 LR	CT8.2 LCR	CT8 CC	CT8 DS	CT8.4 LCRS	CT8 SW	CT8 XO Mk2
Description	3-way closed-box system	3-way vented-box system	3-way closed-box system	3-way monopole/2-way dipole selectable closed-box surround system	3-way closed-box system	Closed-box subwoofer	CT800 system active bass management controller
Drive Units	1x ø32mm (1¼in) aluminium dome high-frequency 1x ø150mm (6in) woven Kevlar cone FST midrange 2x ø250mm (10in) carbon fibre/Rohacell sandwich cone bass	1x ø32mm (1¼in) tube-loaded aluminium dome high-frequency 1x ø150mm (6in) woven Kevlar FST midrange 2x ø200mm (8in) Paper/Kevlar cone bass	1x ø32mm (1¼in) aluminium dome high-frequency 1x ø150mm (6in) woven Kevlar cone FST midrange 2x ø250mm (10in) carbon fibre/Rohacell sandwich cone bass	1x ø32mm (1¼in) aluminium dome high-frequency 6x ø100mm (4in) midrange/high-frequency 1x ø150mm (6in) woven Kevlar cone FST midrange 2x ø250mm (10in) carbon fibre/Rohacell sandwich cone bass	1x ø32mm (1¼in) tube-loaded aluminium dome high-frequency 1x ø150mm (6in) woven Kevlar FST midrange 1x ø200mm (8in) carbon fibre/Rohacell sandwich cone bass	1x ø380mm (15in) carbon fibre/Rohacell sandwich cone bass	Bass/midrange crossover Subwoofer/bass crossover Low-frequency roll-off alignment High frequency roll-off alignment 3 adjustable low frequency parametric equalisers Subwoofer in/out Level adjustment for number of subwoofers 12V trigger switching for surround mode
Frequency range (+6dB)	23Hz and 40kHz	31Hz and 45kHz	23Hz and 40kHz	26Hz and 40kHz (monopole) 26Hz and 22kHz (dipole)	39Hz and 40kHz	13Hz and 40Hz	
Power handling	1000W	500W	1000W	1000W	200W	1000W	
Sensitivity	93dB spl (2.83V, 1m)	91dB spl (2.83V, 1m)	93dB spl (2.83V, 1m)	93dB spl (2.83V, 1m)	88dB spl (2.83V, 1m)	90dB spl (2.83V, 1m)	
Impedance	8Ω (minimum 4Ω)	8Ω (minimum 3.0Ω)	8Ω (minimum 4Ω)	8Ω (minimum 4Ω)	8Ω (minimum 3.0Ω)	8Ω (minimum 4Ω)	
Dimensions	Height: 1100mm (43.3in) Width: 325mm (12.8in) Depth: 550mm (21.65in)	1000mm (39.4in) 325mm (12.8in) 300mm (11.8in)	325mm (12.8in) 1100mm (43.3in) 550mm (21.65in)	1100mm (43.3in) 325mm (12.8in) 250mm (9.85in)	630mm (24.8in) 325mm (12.8in) 227mm (9in)	475mm (18.7in) 475mm (18.7in) 475mm (18.7in)	Dimensions Height: 44.5mm (1.75in) 1U Width: 483mm (19in) Depth: 155mm (6.1in)
Weight	85kg (187.4lb)	36.3kg (79.92lb)	85kg (187.4lb)	75kg (165.3lb)	19.9kg (43.9lb)	35kg (77lb)	Weight 3kg (6.6lb)



CT7.3 LCRS
The top-of-the-range speaker offers unparalleled clarity combined with powerful low frequency effects thanks to a pair of whopping 200mm (8in) paper/Kevlar bass units and a dedicated Kevlar FST midrange.



CT7.4 LCRS
The mid-point speaker in the range offers a combination of high sensitivity and impressive performance at lower frequencies through its two 150mm (6in) Kevlar bass/midrange drivers.



CT7.5 LCRS
The entry-level loudspeaker in the CT700 Series delivers outstanding spaciousness, imaging and definition through its single 180mm (7in) Kevlar bass/midrange unit.



CT SW15
For maximum bass impact, the CT SW15 comes with a 380mm (15in) long-throw cone, made from paper/Kevlar composite.



CT SW12
Where space is at a premium, the CT SW12 features a slightly smaller 300mm (12in) long-throw cone made from paper/Kevlar composite.



CT SW10
The most compact of our three Custom Theatre subs features a 250mm (10in) long-throw paper/Kevlar cone.



CWM8.5
The CWM8.5 in-wall speaker offers a stunning level of performance for music and movies, where space is more limited.



CWM8.3
The CWM8.3 is an in-wall speaker for very high performance cinema and music applications, particularly the front three channels of a home theatre.



CCM8.5
The CCM8.5 in-ceiling speaker delivers a directable sound stage into any area of the room, ideal for the rear channels in a home cinema set-up.



SA1000
The SA1000's equalisation is custom-tailored to the Custom Theatre Subwoofers, ensuring deep-bass extension all the way to 16Hz. And why stop at just one subwoofer? For really serious bass, it's possible to use the SA1000 to power two subs simultaneously.

Description	3-way vented-box system	2-way vented-box system	2-way vented-box system
Drive Units	1x ø25mm (1in) cloth dome high-frequency 1x ø150mm (6in) woven blue Kevlar FST mid-range 2x ø200mm (8in) Paper/Kevlar bass units	1x ø25mm (1in) cloth dome high-frequency 2x ø165mm (6.5in) woven blue Kevlar cone bass/midrange	1x ø25mm (1in) cloth dome high-frequency 1x ø180mm (7in) woven blue Kevlar cone bass/midrange
Frequency range (-6dB)	36Hz and 28kHz	43Hz and 28kHz	48Hz and 28kHz
Power handling	200W	150W	120W
Sensitivity	92dB spl (2.83V, 1m)	94dB spl (2.83V, 1m)	92dB spl (2.83V, 1m)
Impedance	8Ω (minimum 3.0Ω)	8Ω (minimum 4.0Ω)	8Ω (minimum 4.6Ω)
Dimensions	Height: 360mm (14.2in) Width: 606mm (23.9in) Depth: 288mm (11.3in)	Height: 343mm (13.5in) Width: 444mm (17.5in) Depth: 288mm (11.3in)	Height: 305mm (12in) Width: 444mm (17.5in) Depth: 288mm (11.3in)
Weight	22.5kg (49.6lb)	16.5kg (36.4lb)	11.5kg (25.4lb)

Description	Passive closed box subwoofer used with SA1000	Passive closed box subwoofer used with SA1000	Passive closed box subwoofer used with SA1000
Drive Units	1 x ø380 mm (15in) paper/Kevlar bass unit	1 x ø300mm (12in) paper/Kevlar bass unit	1 x ø250mm (10in) Paper/Kevlar bass unit
Frequency range (-6dB)	16Hz and 25/140Hz	17Hz and 25/140Hz	18Hz and 25/140Hz
Power handling	1000W	1000W	1000W
Impedance	8Ω	8Ω	8Ω
Dimensions	Height: 550 mm (21.7in) Width: 550 mm (21.7in) Depth: 260 mm (10.3in)	Height: 465mm (18.3in) Width: 396mm (15.6in) Depth: 260mm (10.3in)	Height: 360mm (14.2in) Width: 340mm (13.4in) Depth: 260mm (10.3in)
Weight	30kg (66.1lb)	25kg (55.1lb)	15.1kg (33.3lb)

Description	2-way in-wall loudspeaker	3-way in-wall loudspeaker	2-way in ceiling loudspeaker
Drive Units	1x 25mm (1in) Aluminium Carbon Braced Tweeter with Nautilus Tube 1x 180mm (7in) woven blue Kevlar cone bass/midrange driver with anti-resonance plug Flowport	1x 25mm (1in) Aluminium Carbon Braced Tweeter with Nautilus Tube 1x 130mm (5in) woven blue Kevlar cone FST midrange drive 2 x 180mm (7in) Carbon Fibre Rohacell Bass drivers Flowport	1x 25mm (1in) Aluminium Carbon BracedTweeter with Nautilus Tube Aluminium Tweeter 'wing' allows time alignment 1x 180mm (7in) woven blue Kevlar cone bass/midrange driver with anti-resonance plug Continuously rotatable mini-baffle allows "toe-in" Flowport
Frequency range (-6dB)	35Hz - 40kHz	30Hz - 40kHz	35Hz - 40kHz
Power handling	120W	200W	120W
Sensitivity	89dB	89dB	88dB
Impedance	8Ω (minimum 5Ω)	8Ω (minimum 5Ω)	8Ω (minimum 3.3Ω)
Frame outer	411mm x 247mm (16.2in x 9.72in)	880mm x 254mm (34.6in x 10in)	351mm x 351mm (13.8in x 13.8in)
Cut-out	395mm x 231mm (15.5in x 9.09in)	864mm x 238mm (34in x 9.37in)	331mm x 331mm (13in x 13in)
Cut-out allowance	8mm (0.31in)	8mm (0.31in)	8mm (0.31in)
Protrusion	8mm (0.31in)	8mm (0.31in)	8mm (0.31in)
Back box	1088mm x 350mm 90mm (42.8in x 13.6in x 3.54in)	1328mm x 350mm 90mm (52.28in x 13.78in x 3.54in)	701mm x 343mm x 177mm (27.6in x 13.5in x 6.9in)

Description	1000W rack-mount amplifier with built-in subwoofer equalisation
Functions	Front panel: Rotary volume (line in) Rotary low-pass filter frequency (4th-order Linkwitz, 40Hz - 140Hz) Low-pass filter defeat 2-position switch Phase 0°/180° 2-position switch Bass extension 3-position switch Movie/music EQ 2-position switch On/auto/standby 3-position switch Status LED Fault LED Rear panel: Model select 3-position switch (CT SW10/CT SW 12/CT SW15)
Amplifier inputs	2x RCA Phono socket, line in 2x RCA Phono socket, link out 1x XLR socket, line in 1x XLR socket, link out 3.5mm jack - 12V trigger on/standby (overrides manual standby setting) 3.5mm jack - 12V trigger equalisation movie/music
Amplifier outputs	1x Neutrik® Speakon® 4-pole speaker socket 2x pairs of Binding Posts
Amplifier power output	1000W
Impedance	33kΩ
Signal/noise	>80dB
Rated power consumption	300W - 1/8 full power 34W - Idling <1W - Standby
Dimensions	Height: 100mm (3.9in) [88.5mm (3.5in) plus feet] Width: 430mm (16.9in) Depth: 322mm (12.7in) Front panel height: 2U 88.1mm (3.5in)
Weight	6.45kg (14.3lb)
Finish	Black



CCM7.3
Behind the barely noticeable grille of these in-ceiling speakers is some seriously advanced acoustic technology. We've also introduced some new innovations designed especially for this range: enhancements like angled, ultra-rigid baffles, and a unique scallop-shaped indentation under the tweeter for minimum distortion at high frequencies.

CCM7.4

CCM7.5

CWM7.3
These exceptional in-wall units are packed full of technology that makes them more than a match for most free-standing Hi-Fi speakers. The CWM7.5 and the CWM7.4 both feature Nautilus tube-loaded tweeters and Kevlar bass/ midrange drivers, while the mighty three-way CWM7.3 has a dedicated Kevlar FST cone for stunning definition in the midrange, and two Paper/Kevlar bass drivers for truly commanding bass impact and presence.

CWM7.4

CWM7.5

Description	3-way in-ceiling system	2-way in-ceiling system	2-way in-ceiling system	3-way in-wall system	2-way in-wall system	2-way in-wall system
Drive Units	1x ø25mm (1in) Nautilus tube loaded soft dome tweeter 1x ø100mm (4in) blue Kevlar cone FST midrange 2x ø130mm (5in) paper/ Kevlar cone bass drivers	1x ø25mm (1in) Nautilus tube loaded soft dome tweeter 2x ø130mm (5in) blue Kevlar cone bass/ midrange	1x ø25mm (1in) Nautilus tube loaded soft dome tweeter 1x ø150mm (6in) blue Kevlar cone bass/ midrange	1x ø25mm (1in) Nautilus tube loaded soft dome tweeter 1x ø100mm (4in) blue Kevlar cone FST midrange 2x ø150mm (6in) paper/ Kevlar cone bass drivers	1x ø25mm (1in) Nautilus tube loaded soft dome tweeter 1x ø150mm (6in) blue Kevlar cone bass/ midrange	1x ø25mm (1in) Nautilus tube loaded soft dome tweeter 1x ø130mm (5in) blue Kevlar cone bass/ midrange
Frequency range (-6dB)	52Hz and 28kHz	54Hz and 28kHz	56Hz and 28kHz	43Hz and 28kHz	47Hz and 28kHz	49Hz and 28kHz
Power handling	200W	150W	150W	200W	150W	150W
Sensitivity	90dB	88.5dB	88dB	90dB	89dB	86dB
Impedance nominal (min)	6Ω (3.5Ω)	8Ω (6.5Ω)	8Ω (6.5Ω)	4Ω (3Ω)	6Ω (5Ω)	6Ω (5.2Ω)
Frame height	355mm (14in)	355mm (14in)	355mm (14in)	736mm (29in)	415mm (16.5in)	356mm (14in)
Frame width	355mm (14in)	355mm (14in)	355mm (14in)	276mm (11in)	251mm (10in)	212mm (8.5in)
Cut-out height	332mm (13.1in)	332mm (13.1in)	332mm (13.1in)	711mm (28in)	390mm (15.4in)	331mm (13in)
Cut-out width	332mm (13.1in)	332mm (13.1in)	332mm (13.1in)	251mm (9.9in)	226mm (8.9in)	187mm (7.4in)
Reservoir box Height:				460mm (18.1in)	460mm (18.1in)	181mm (7.1in)
Width:				220mm (8.7in)	220mm (8.7in)	385mm (15.2in)
Depth:				60mm (2.4in)	60mm (2.4in)	60mm (2.4in)
Depth behind surface	194mm (7.7in)	194mm (7.7in)	194mm (7.7in)	102mm (4in)	102mm (4in)	102mm (4in)
Protrusion	8mm (0.3in)	8mm (0.3in)	8mm (0.3in)	8mm (0.3in)	8mm (0.3in)	8mm (0.3in)
Weight	11.5kg (25.4lb)	10kg (22lb)	5.6kg (12.3lb)	9.2kg (20.3lb)	3.8kg (8.4lb)	2.5kg (5.5lb)
Pre-mount Kit	PMK 7C	PMK 7C	PMK 7C	PMK 7.3W	PMK 7.4W	PMK 7.5W



CCM662
Discreet, versatile and fantastically easy to install, these two-way, six-inch in-ceiling speakers will bring great sound to places other speakers can't reach. But while they're small enough to fit almost anywhere, they also pack a powerful punch.

CCM663

CCM664

CCM665

CCM663SR
These are the dual-channel in-ceiling speakers in the Custom Installation 600 Series range. A clever design bringing together two voice coils and two tweeters, meaning you can experience pseudo stereo sound from just one speaker. They're ideal for bringing stereo sound to rooms where space is limited, or as a discreet option for the surround sound channel in a home theatre set-up (you can change between these two modes at the flick of a switch).

CCM664SR

CCM682
The largest of the Custom Installation 600 Series' in-ceiling range, these two-way speakers bring you an amazingly rich, full-bodied sound, courtesy of their sizable eight-inch bass/ midrange cones.

Description	2-way in-ceiling system	2-way in-ceiling system	2-way in-ceiling system	2-way in-ceiling system	2-way dual channel in-ceiling system	2-way dual channel in-ceiling system	2-way in-ceiling system
Drive Units	1x ø25mm (1in) Nautilus swirl loaded aluminium dome tweeter 1x ø150mm (6in) blue Kevlar cone bass/ midrange	1x ø25mm (1in) Nautilus swirl loaded aluminium dome tweeter 1x ø150mm (6in) blue Kevlar cone bass/ midrange	1x ø25mm (1in) soft dome tweeter 1x ø150mm (6in) black glassfibre cone bass/ midrange	1x ø25mm (1in) soft dome tweeter 1x ø150mm (6in) black glassfibre cone bass/ midrange	2x ø19mm (0.75in) soft dome tweeter 1x ø150mm (6in) blue Kevlar cone bass/ midrange	2x ø19mm (0.75in) soft dome tweeter 1x ø150mm (6in) black glassfibre cone bass/ midrange	1x ø25mm (1in) Nautilus swirl loaded aluminium dome tweeter 1x ø200mm (8in) blue Kevlar cone bass/ midrange
Frequency range (-6dB)	45Hz and 50kHz	45Hz and 50kHz	45Hz and 35kHz	45Hz and 35kHz	48Hz and 30kHz	48Hz and 30kHz	35Hz and 50kHz
Power handling	150W	130W	130W	130W	80W (per channel)	80W (per channel)	150W
Sensitivity	88dB	88dB	88dB	87dB	83dB (per channel) 89dB (both channels driven)	82dB (per channel) 88dB (both channels driven)	89dB
Impedance Nominal (min)	8Ω (4.5Ω)	8Ω (4.5Ω)	8Ω (4.5Ω)	8Ω (4.5Ω)	8Ω (4Ω) (per channel)	8Ω (4Ω) (per channel)	8Ω (4.5Ω)
Frame height	240mm (9.5in)	240mm (9.5in)	240mm (9.5in)	240mm (9.5in)	240mm (9.5in)	240mm (9.5in)	290mm (11.4in)
Frame width	240mm (9.5in)	240mm (9.5in)	240mm (9.5in)	240mm (9.5in)	240mm (9.5in)	240mm (9.5in)	290mm (11.4in)
Cut-out height	202mm (8in)	202mm (8in)	202mm (8in)	202mm (8in)	202mm (8in)	202mm (8in)	251mm (9.9in)
Cut-out width	202mm (8in)	202mm (8in)	202mm (8in)	202mm (8in)	202mm (8in)	202mm (8in)	251mm (9.9in)
Depth behind surface	133mm (5.2in)	133mm (5.2in)	133mm (5.2in)	133mm (5.2in)	133mm (5.2in)	133mm (5.2in)	133mm (5.2in)
Protrusion	4mm (0.2in)	4mm (0.2 in)	4mm (0.2in)	4mm (0.2in)	4mm (0.2in)	4mm (0.2in)	4mm (0.2in)
Weight	2.8kg (6.2lb)	2.4kg (5.3lb)	2.2kg (4.9lb)	1.9kg (4.2lb)	2.5kg (5.5lb)	2.2kg (4.9lb)	2.9kg (6.4lb)
Pre-mount Kit	PMK C6	PMK C6	PMK C6	PMK C6	PMK C6	PMK C6	PMK C8
Back box	BB 6C	BB 6C	BB 6C	BB 6C	BB 6C	BB 6C	BB 6C
Square grille option	GR 66SQ	GR 66SQ	GR 66SQ	GR 66SQ	GR 66SQ	GR 66SQ	GR 68SQ



CCM683
The largest of the Custom Installation 600 Series' in-ceiling range, these two-way speakers bring you an amazingly rich, full-bodied sound, courtesy of their sizable eight-inch bass/midrange cones.

CCM684



CWM663
We've brought some of our most refined technology to these neat in-wall speakers, so you can enjoy serious Hi-Fi sound quality from a system that's close to invisible. All three speakers in the range have tweeters featuring our famous Nautilus tube-loaded design – a true audiophile-grade piece of technology that helps to minimise sound colouration. We haven't stinted on technology even for the smallest speaker in the range.

CWM664

CWM652



CCM362
The CCM362 is a two-way in-ceiling loudspeaker, balanced for wide-angle listening. It comes with a choice of round or square baffles, and like all the models in the CI 300 Series it features an elegant minimal-width border design. It features a 1 x 160mm (6in) Polypropylene cone bass/midrange driver, and a 1 x 25mm (1in) soft dome tweeter.



CCM382
The CCM382 is a two-way in-ceiling loudspeaker, balanced for wide-angle listening. It comes with a choice of round or square baffles, and like all the models in the CI 300 Series it features an elegant minimal-width border design. It features a 1 x 200mm (8in) Polypropylene cone bass/midrange driver, and a 1 x 25mm (1in) soft dome tweeter.

CWM362
The CWM362 is a two-way in-wall loudspeaker. Like the in-ceiling models in the series, it features an elegant minimal-width border design. It features a 1 x 160mm (6in) Polypropylene cone bass/midrange driver, and a 1 x 25mm (1in) soft dome tweeter.



ISW-4
If you're looking for a built-in subwoofer that can provide big bass and audiophile extension for any of our Custom Installation systems, the ISW-4 is for you. Two long-throw 200mm (8in) drivers allow it to move the large volumes of air needed for high-quality low-frequency output. The speaker is housed in its own sturdy back box for rock-solid stability and minimum sound bleed, and is powered by the SA250 Mk2, a separate audiophile-standard 250W Class D amplifier.



ISW-3
The ISW-3 is an incredibly versatile and compact in-wall and in-ceiling subwoofer, capable of providing high-quality bass output in spaces that may have previously missed out on this vital element, including kitchen cabinets! Its balanced design, featuring 2 x 160mm (6in) drivers, means that it can be placed in a variety of locations without causing vibrations. Powered by a separate audiophile-standard 250W Class D amplifier the SA250 Mk2, the system keeps its cool even when you're listening to demanding movie soundtracks at high volumes.



SA250 Mk2
The SA250 Mk2 subwoofer amplifier is specifically designed for use with the Custom Installation Series in-wall subwoofers, the ISW-3 and ISW-4. Deceptively slim at 3.5inches, and weighing 11.9lb, it provides 250 Watts of power. The SA250 Mk2's equalisation is custom tailored to the in-wall subwoofers, with a two position EQ switch to select between the ISW-3 and ISW-4.

Description	2-way in-ceiling system	2-way in-ceiling system	2-way in-wall system	2-way in-wall system	2-way in-wall system
Drive Units	1x ø25mm (1 in) Nautilus swirl loaded aluminium dome tweeter 1x ø200mm (8in) blue Kevlar cone bass/midrange	1x ø25mm (1in) soft dome tweeter 1x ø200mm (8in) black glassfibre cone bass/midrange	1x ø25mm (1in) Nautilus tube loaded aluminium dome tweeter 1x ø150mm (6in) blue Kevlar cone bass/midrange	1x ø25mm (1in) Nautilus tube loaded aluminium dome tweeter 1x ø150mm (6in) black glassfibre cone bass/midrange	1x ø25mm (1in) Nautilus tube loaded aluminium dome tweeter 1x ø130mm (5in) blue Kevlar cone bass/midrange
Frequency range (-6dB)	35Hz and 50kHz	35Hz and 35kHz	45Hz and 50kHz	45Hz and 35kHz	54Hz and 50kHz
Power handling	130W	130W	150W	130W	100W
Sensitivity	88dB	88dB	88dB	88dB	86dB
Impedance Nominal (min)	8Ω (4.5Ω)	8Ω (4.5Ω)	8Ω (4.5Ω)	8Ω (4.5Ω)	8Ω (4.5Ω)
Frame height	290mm (11.4in)	290mm (11.4in)	315mm (12.4in)	315mm (12.4in)	264mm (10.9in)
Frame width	290mm (11.4in)	290mm (11.4in)	221mm (8.7in)	221mm (8.7in)	191mm (7.5in)
Cut-out height	251mm (9.9in)	251mm (9.9in)	279mm (11in)	279mm (11in)	228mm (9in)
Cut-out width	251mm (9.9in)	251mm (9.9in)	183mm (7.2in)	183mm (7.2in)	153mm (6in)
Depth behind surface	133mm (5.2in)	133mm (5.2in)	95mm (3.7in)	95mm (3.7in)	95mm (3.7in)
Protrusion	4mm (0.2in)	4mm (0.2in)	4mm (0.2in)	4mm (0.2in)	4mm (0.2in)
Weight	2.8kg (6.2lb)	2.2kg (5.5lb)	2.4kg (5.3lb)	2.1kg (4.6lb)	2.1kg (4.6lb)
Pre-mount Kit	PMK C8	PMK C8	PMK W6	PMK W6	PMK W5
Back box	BB 6C	BB 6C	BB 6W	BB 6W	BB 6W
Square grille option	GR 68SQ	GR 68SQ			

Description	2-way in-ceiling system	2-way in-ceiling system	2-way in-ceiling system	2-way in-wall system
Drive Units	1x ø160mm (6in) Polypropylene cone bass/midrange 1x ø25mm (1in) soft dome tweeter	1x ø200mm (8in) Polypropylene cone bass/midrange 1x ø25mm (1in) soft dome tweeter	1x ø160mm (6in) Polypropylene cone bass/midrange 1x ø25mm (1in) soft dome tweeter	1x ø160mm (6in) Polypropylene cone bass/midrange 1x ø25mm (1in) soft dome tweeter
Frequency range (-6dB)	50Hz – 30kHz	45Hz – 30kHz	50Hz – 30kHz	50Hz – 30kHz
Power handling	80W	80W	80W	80W
Sensitivity	89dB	90dB	89dB	89dB
Impedance nominal (min)	8Ω (5.0Ω)	8Ω (5.0Ω)	8Ω (5.0Ω)	8Ω (5.0Ω)
Frame height	240mm (9.5in)	290mm (11.4in)	240mm (9.5in)	221mm (8.7in)
Frame width	240mm (9.5in)	290mm (11.4in)	240mm (9.5in)	185mm (7.3in)
Cut-out height	202mm (8in)	251mm (9.9in)	202mm (8in)	179mm (7in)
Cut-out width	202mm (8in)	251mm (9.9in)	202mm (8in)	153mm (6in)
Depth behind surface	79mm (3.2in)	85mm (3.4in)	79mm (3.2in)	76mm (3in)
Protrusion	4mm	4mm	4mm	4mm
Weight	2.8kg (6.2lb)	2.8kg (6.2lb)	2.8kg (6.2lb)	2.1kg (4.6lb)
Pre-mount Kit	PMK C6	PMK C8	PMK C6	PMK W6
Back box	BB 6C	BB 6C	BB 6C	BB 6W

Description	In wall subwoofer system with external rack-mount amplifier	In wall subwoofer system with external rack-mount amplifier
Drive units	2 x ø200mm (8in) Paper/Kevlar cone	2 x ø150mm (6in) Paper/Kevlar cone
Frequency range (-6dB)	17Hz and 290Hz adjustable (EQ at A)	21Hz and 222Hz adjustable (EQ at A)
Frequency response	±3dB 21Hz – 200Hz adjustable (EQ at A)	±3dB 27Hz – 120Hz adjustable (EQ at A)
Bass extension (-6dB)	17Hz (position A) 21Hz (position B) 24Hz (position C)	21Hz (position A) 25Hz (position B) 29Hz (position C)
Power Handling	200W	250W
Impedance	8Ω (minimum 6.3Ω)	8Ω (minimum 6.3Ω)
Dimensions	Height: 524mm (20.6in) Width: 294mm (11.6in) Depth: 93mm (3.7in)	Height: 470mm (18.5in) Width: 330mm (13in) Depth: 235mm (9.25in)
Depth with grille:	114mm (4.5in)	
Cut-out size	Height: 485mm (19.9in) Width: 255 (10in)	Height: 78mm (3.1in) Width: 334mm (13.5in)
Net weight	6.4kg (14.1lb)	6.4kg (14.1lb)
Finish Frame/Grille	Semi-matte white suitable for customising or pre-painting	Semi-matte white suitable for customising or pre-painting
Back Box		
Dimensions	Height: 1406mm (55.4in) Width: 345mm (13.6in) Depth: 86mm (3.4in)	
Net Weight	9.6kg (21.2lb)	12.5kg (27.5lb)
Material	MDF	MDF
Electronics	SA250 Mk2	SA250 Mk2

Description	250W rack-mount amplifier with built-in subwoofer equalisation
Functions	Front panel: Rotary volume (line in) Rotary low-pass filter frequency (4th-order Linkwitz, 40Hz – 140Hz) Low-pass filter defeat 2-position switch Phase 0°/180° 2-position switch Bass extension 3-position switch Movie/music EQ 2-position switch On/auto/standby 3-position switch Status LED Fault LED
Amplifier inputs	Rear panel: Model select 2-position switch (ISW-3/ISW-4) 2x RCA Phono socket, line in 2x RCA Phono socket, link out 1x XLR socket, line in 1x XLR socket, link out 3.5mm jack – 12V trigger on/standby (overrides manual standby setting) 3.5mm jack – 12V trigger equalisation movie/music
Amplifier outputs	1x Neutrik® Speakon® 4-pole speaker socket 2x pairs of Binding Posts
Amplifier power output	250W
Impedance	33kΩ
Signal/noise	>80dB
Rated power consumption	95W – 1/3 full power 30W – Idling <1W – Standby
Dimensions	Height: 100mm (3.9in) [88.5mm (3.5in) plus feet] Width: 430mm (16.9in) Depth: 322mm (12.7in)
Front panel height:	2U 88.1mm (3.5in)
Weight	5.4kg (11.9lb)
Finish	Black



CCM818
An unobtrusive, flush-mounted, in-ceiling speaker, the CCM818 is as powerful as it is discreet. The speaker's 200mm (8in) woven Kevlar cone drive unit is fitted at a 12-degree angle, thereby retaining some of its cousin's sound directionality.



CCM816
Featuring a Kevlar bass/midrange drive unit, the CCM816 in-ceiling speaker is a smaller version of the CCM818, designed for home theatre or 2-channel applications. Fitted at a 28-degree angle, the 165mm (6.5in) woven Kevlar cone drive unit enables the optimum listening axis to be directed more towards the listening area.



CWML CR7
The CWMLCR7 features twin 100mm (4in) mica cone bass drivers, a 100mm (4in) woven Kevlar cone midrange driver and a Nautilus tube-loaded 25mm (1in) aluminium dome tweeter. The mica bass drivers provide the low frequency snap characteristic of any really good loudspeaker.



AM-1
If you want to bring impeccable sound to places where conventional speakers fear to tread, we've come up with the ideal solution: the AM-1 architectural monitor. This weatherproof speaker is designed with the outdoors in mind – it's perfect for gardens, pool sides and patios – but its robust durability and sleek looks also makes it a great choice for public indoor spaces like bars or restaurants.

Description	2-way in-ceiling system	2-way in-ceiling system	3-way in-wall system
Drive Units	1x ø25mm (1in) Nautilus tube-loaded aluminium dome high-frequency 1x ø200mm (8in) woven Kevlar cone bass/midrange	1x ø25mm (1in) Nautilus tube-loaded aluminium dome high-frequency 1x ø165mm (6.5in) woven blue Kevlar cone bass/midrange	1x ø25mm (1in) Nautilus tube-loaded aluminium dome high-frequency 1x ø100mm (4in) Kevlar cone midrange 3x ø100mm (4in) mica cone bass
Frequency range (-6dB)	35Hz and 50kHz	45Hz and 45kHz	54Hz and 30kHz
Power handling	150W	150W	150W
Sensitivity	90dB	88dB	85dB
Impedance Nominal (min)	8Ω (3.5Ω)	8Ω (4.6Ω)	8Ω (3.6Ω)
Frame height	280mm (11in)	228mm (9in)	625mm (24.6in)
Frame width	280mm (11in)	228mm (9in)	175mm (6.9in)
Cut-out height	254mm (10in)	207mm (8.1in)	600mm (23.6in)
Cut-out width	254mm (10in)	207mm (8.1in)	150mm (5.9in)
Depth behind surface	136mm (5.4in)	136mm (5.4in)	97mm (3.8in)
Protrusion	14mm (0.6in)	9mm (0.4in)	3.5mm (0.1in)
Weight	2.6kg (5.7lb)	2.7kg (5.9lb)	4.2kg (9.3lb)
Pre-mount Kit	PMK C8	PMK C6	PMK LCR7
Back box	BB 6C	BB 6C	BB LCR7

Technical features	Nautilus™ tube loaded aluminium dome tweeter Glassfibre cone bass/midrange Auxiliary Bass Radiator (ABR)
Description	Auxiliary Bass Radiator (ABR)
Drive units	2-way system with Auxiliary Bass Radiator (ABR)
Frequency range	-6dB at 46Hz and 50kHz (wall mounted)
Frequency response	51Hz - 22kHz on reference axis (wall mounted)
Sensitivity	86dB (2.83V, 1m)
Total harmonic distortion	<1% 200Hz - 20kHz (86dB, 1m)
Nominal Impedance	8Ω (5.2 Ω min)
Recommended amplifier	20W - 100W into 8V on unclipped programme power
Dimensions	Height: 310mm (12 1/4in) Width: 180mm (7in) Depth: 210mm (8 1/4in)
Net weight	4kg (8.8lb)
Finishes	White Black



805 Maserati Edition
The unique design of this high-performance speaker's cabinet and stand reflects the style of a Maserati car interior, featuring birds eye real wood veneer and black Maserati leather.



P5 Maserati Edition
Featuring fine-grain natural leather in distinctive Maserati blue, and the iconic Maserati trident marquee, these headphones come with their own protective travel case, also in Maserati blue leather.

Technical features	Free-mounted diamond dome tweeter Nautilus tube tweeter loading Quad magnet tweeter motor Kevlar brand fibre cone bass/midrange Matrix cabinet Flowport Integral floor stand
Description	2-way vented-box system
Drive Units	1x ø25mm (1in) diamond dome high-frequency 1x ø165mm (6.5in) woven Kevlar cone bass/midrange
Frequency range	-6dB at 42Hz and 33kHz
Frequency response	49Hz - 28kHz ±3dB on reference axis
Dispersion	Within 2dB of reference response Horizontal: over 60° arc Vertical: over 10° arc
Sensitivity	88dB spl (2.83V, 1m)
Harmonic distortion	2nd and 3rd harmonics (90dB, 1m) <1% 100Hz - 100kHz <0.5% 150Hz - 100kHz
Nominal impedance	8Ω (minimum 4.7Ω)
Crossover frequency	4kHz
Recommended amplifier power	50W - 120W into 8Ω on unclipped programme power
Max. recommended cable impedance	0.1Ω
Dimensions	Height: 461mm (18.1 in) without stand 1016mm (40 in) with stand Width: 238mm (9.3 in) without stand 255mm (10 in) with stand Depth: 327mm (12.9 in) without stand 368mm (14.5 in) with stand
Net weight	Speaker: 12kg (26 lbs) Floor stand: 10kg (23 lbs)
Finish	Cabinet: Bird's Eye real wood veneer Black leather Grille: Black cloth Floor stand: Bird's Eye real wood veneer Natural aluminium Soft touch black

Technical features	Mylar damped laminate diaphragm Changeable ear cushions Detachable cable Folding (flatable) design Supra aural headphone
Description	Supra aural headphone
Inputs	3.5mm stereo mini jack (CTIA 4-pole)
Drive units	2x ø40mm (1.6in) full range
Frequency range	10Hz to 20kHz
Impedance	26Ω
Distortion (THD)	100dB@150Hz <0.2% for 80Hz to 20kHz <1% for 20Hz to 20kHz
Sensitivity	115dB/V at 1kHz
Max. input power	50mW
Cable length	1.2m
Net weight	195g
Accessories supplied	Universal cable (3.5mm stereo 2-pole mini jack) Leather carrying pouch
Apple compatibility	The remote and mic are supported only by iPhone 3GS or later, iPad, iPod touch (2nd generation or later), iPod classic (120GB, 160GB), and iPod nano (4th generation or later). The remote is supported by iPod shuffle (3rd generation or later). Audio is supported by all iPad and iPod models.
Finish	Maserati Blue

Stay in touch

We've come a long way since 1966. What started in the back room of an electrical store in Worthing is now a global company, with a distribution network covering much of the world. We offer unrivalled support, both online and through local distribution. We also have a portfolio of websites giving extensive information about our products in many of the world's major languages.

Thanks for being part of the journey so far. We hope you stay in touch.



Society of Sound

Customers registering a Bowers & Wilkins product will receive a complimentary three-month membership to the Society of Sound, our club for lovers of high-quality audio. Membership provides access to high-quality lossless downloads of new music curated by Peter Gabriel and Real World Studios, and the London Symphony Orchestra.



Distribution network

We make our products available through a global network of carefully selected and trusted retailers. We undertake an extensive support and training program for all of our distributors.

Customer support

We provide comprehensive customer support, both through our global network of dealers and distributors and through our online support service, which is currently offered in the United Kingdom, USA, France, Germany, Holland, Spain, Italy and China.



Country availability

Bowers & Wilkins products are available in:

North America

USA, Canada

Central / South America

Argentina, Brazil, Chile, Columbia, Mexico, Venezuela, Uruguay

Europe

Belgium, Croatia, Cyprus, Czech Republic, Denmark, Estonia, Finland, France, Germany, Greece, Hungary, Italy, Latvia, Lithuania, Republic of Macedonia, Moldova, Netherlands, Poland, Portugal, Romania, Russia, Serbia, Montenegro, Slovakia, Slovenia, Spain, Switzerland, Turkey, Ukraine, United Kingdom

Asia / Oceania

Australia, Hong Kong, India, Indonesia, Japan, New Zealand, Pakistan, Philippines, Singapore, South Korea, Taiwan, Thailand, Vietnam

Africa / Middle East

Egypt, Israel, Morocco, Saudi Arabia, South Africa, UAE

