



# UNIVERSITÀ DI PARMA

## ARCHIVIO DELLA RICERCA

University of Parma Research Repository

An updated checklist of Recent ostracods (Crustacea: Ostracoda) from inland waters of Sicily and adjacent small islands with notes on their distribution and ecology

This is the peer reviewed version of the following article:

*Original*

An updated checklist of Recent ostracods (Crustacea: Ostracoda) from inland waters of Sicily and adjacent small islands with notes on their distribution and ecology / Pieri, Valentina; Marrone, Federico; Martens, Koen; Rossetti, Giampaolo. - In: THE EUROPEAN ZOOLOGICAL JOURNAL. - ISSN 2475-0263. - 87:1(2020), pp. 714-740. [10.1080/24750263.2020.1839581]

*Availability:*

This version is available at: 11381/2883223 since: 2021-10-04T10:56:33Z

*Publisher:*

Taylor and Francis Ltd.

*Published*

DOI:10.1080/24750263.2020.1839581

*Terms of use:*

Anyone can freely access the full text of works made available as "Open Access". Works made available

*Publisher copyright*

note finali coverpage

(Article begins on next page)

27 April 2024

**An updated checklist of Recent ostracods (Crustacea: Ostracoda) from inland waters of Sicily and adjacent small islands with notes on their distribution and ecology**

V. Pieri, F. Marrone, K. Martens and G. Rossetti

*Abbreviations used in the SEM figures*

L *left*  
R *right*  
Cp *carapace*  
V *valve*  
ev *external view*  
iv *internal view*  
lv *lateral view*  
Dv *dorsal view*  
Vv *ventral view*

Figure S1. Spatial distribution of *Sarscypridospsis aculeata* (●) and *Plesiocypridospsis newtoni* (△).



Figure S2. Spatial distribution of *Potamocypris arcuata* (●) and *P. villosa* (○).



Figure S3. Spatial distribution of *Heterocypris incongruens*.



Figure S4. Spatial distribution of *Heterocypris* sp. 1 (●), *H. reptans* (○) and *H. salina* (△).



Figure S5. Spatial distribution of *Eucypris virens*.



Figure S6. Spatial distribution of *Eucypris kerkyrensis* ( $\Delta$ ) and *E. mareotica* ( $\circ$ ).





Figure S7. Spatial distribution of *Tonnacypris lutaria*.



Figure S8. Spatial distribution of *Neglecandona* gr. *neglecta* (★), *N. lindneri* (○) and *N. neglecta* (●).

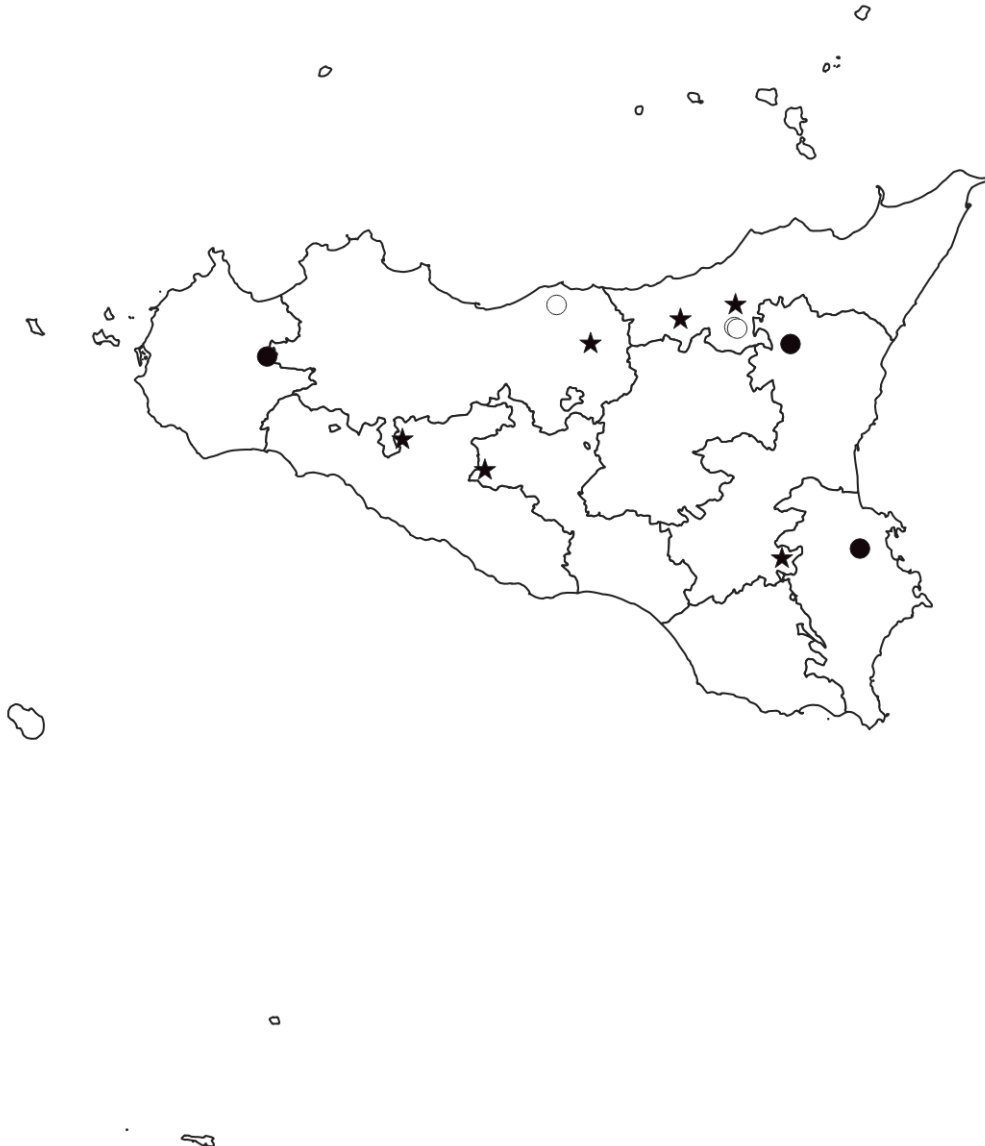


Figure S9. Spatial distribution of *Ilyocypris decipiens* ( $\Delta$ ) and *Ilyocypris getica* ( $\bullet$ ).



Figure S10. Spatial distribution of *Ilyocypris bradyi* (★), *Ilyocypris gibba* (○) and *Ilyocypris inermis* (●).



Figure S11. Spatial distribution of *Thyrenocythere amnicola*.



Figure S12. A, B: *Plesiocypridopsis newtoni*; C-F: *Sarscypridopsis aculeata*; G-J: *Potamocypris arcuata*. A: VP0309, ad ♀, CpRlv; B: VP0309, ad ♀, CpVv; C: VP0306, ad ♀, CpRlv; D: VP0306, ad ♀, CpVv; E: VP0057, ad ♀, LViv; F: VP0057, ad ♀, RViv; G: VP0332, ad ♀, CpLlv; H: VP0325, ad ♀, CpVv; I: VP0176, ad ♀, LViv; J: VP0176, ad ♀, RViv. Scale bar: 200 µm for A-J.

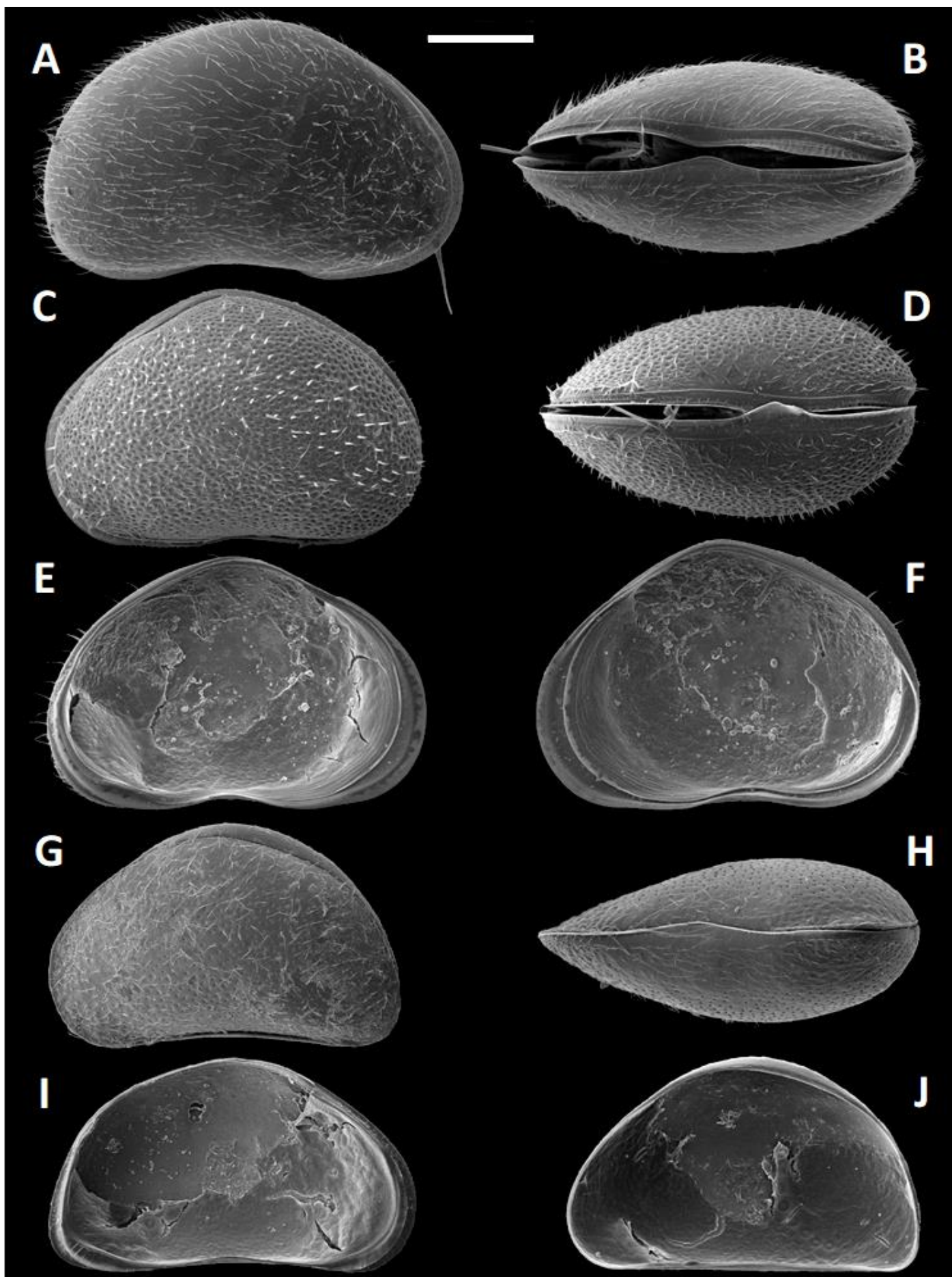


Figure S13. *Heterocypris incongruens*. A: VP0299, ad ♀, CpVv; B: VP0299, ad ♀, CpVv; C: VP1786, ad ♀, CpVv; D: VP1788, ad ♀, CpVv; E: VP0300, ad ♀, CpRlv. Scale bar: 500 µm for A-E.

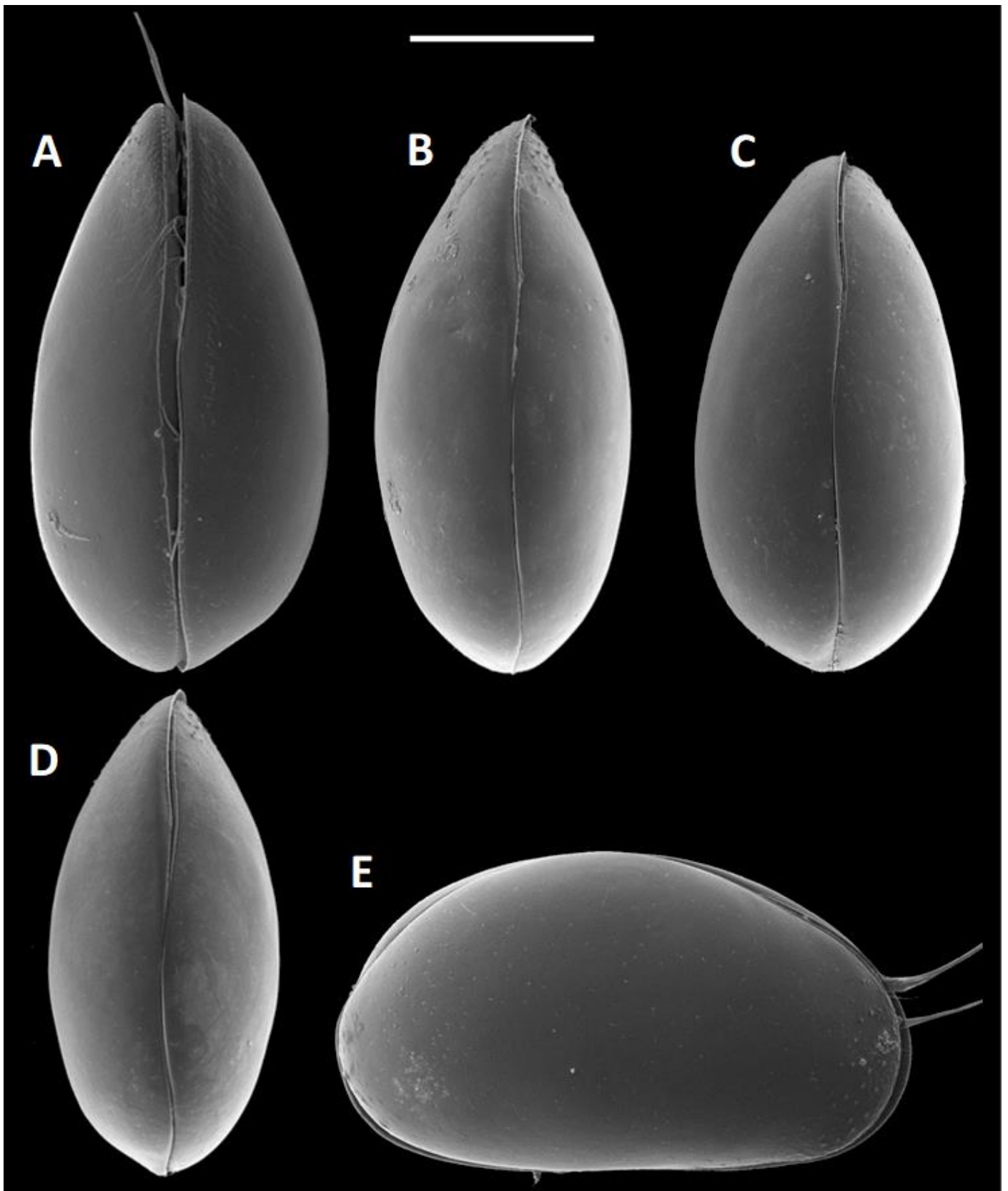




Figure S14. A, B: *Heterocypris incongruens*; C-H: *Heterocypris* spp. A: VP1785, ad ♀, LViv; B: VP1785, ad ♀, RViv; C: VP1593, ad ♀, LViv; D: VP1593, ad ♀, RViv; E: VP1789, ad ♀, LViv; F: VP1789, ad ♀, RViv; G: VP1794, ad ♀, LViv; H: VP1794, ad ♀, RViv. Scale bar: 500  $\mu$ m for A-H.

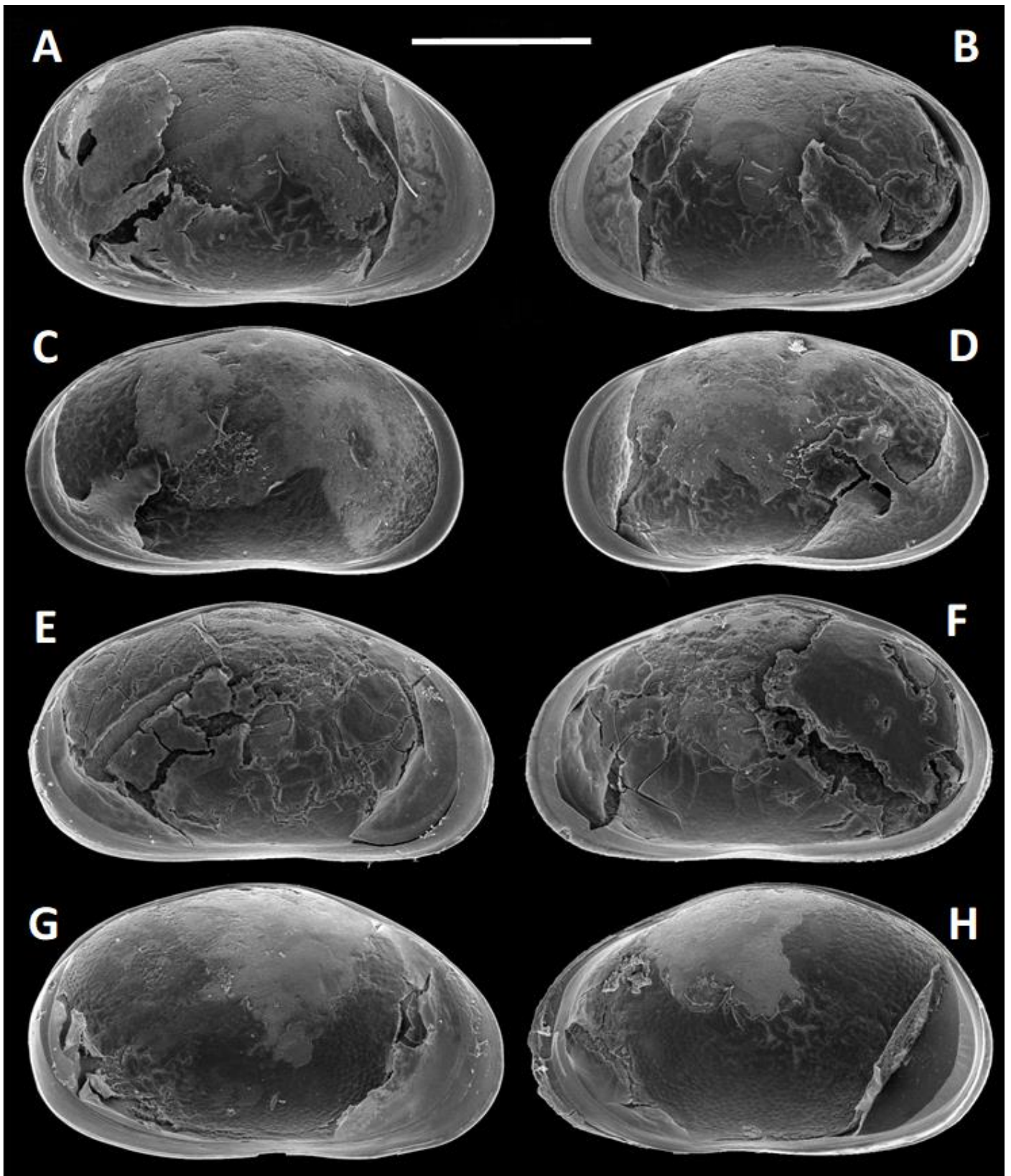




Figure S15. *Heterocypris* sp. 1. A: VP1783, ad ♀, CpVv; B: VP1898, ad ♀, CpVv; C: VP1781, ad ♀, CpVv; D: VP1780, ad ♀, LViv, detail posterior margin; E: VP1780, ad ♀, RViv, detail posterior margin; F: VP1780, ad ♀, LViv; G: VP1780, ad ♀, RViv. Scale bar: 500  $\mu$ m for A-C; 250  $\mu$ m for C, D.

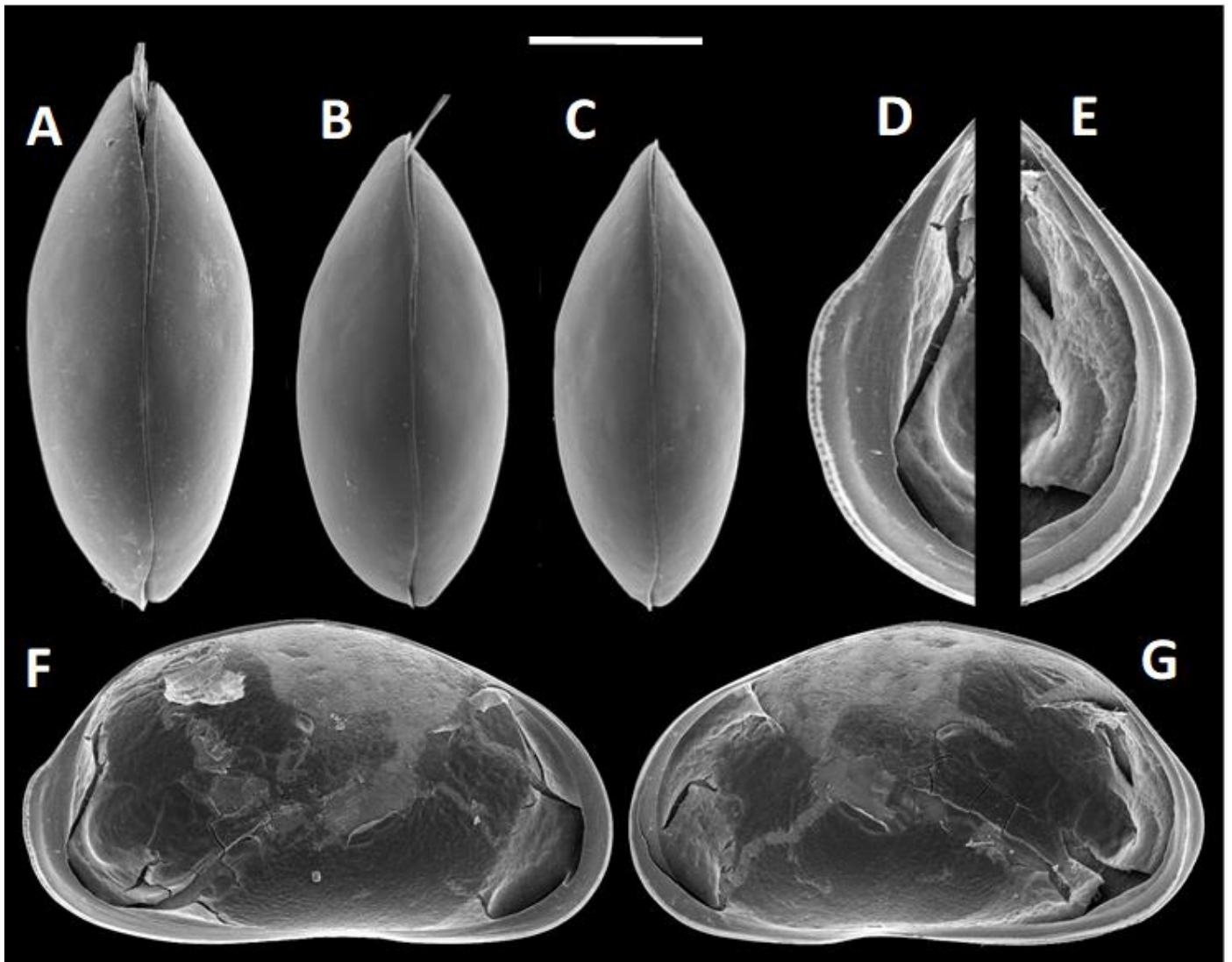


Figure S16. *Eucypris kerkyrensis*. A: VP1552, ad ♀, LViv; B: VP1552, ad ♀, RViv; C: VP1584, ad ♀, LViv; D: VP1584, ad ♀, RViv. Scale bar: 1000  $\mu$ m.



Figure S17. *Eucypris virens*. A: VP0811, ad ♀, LViv; B: VP0811, ad ♀, RViv; C: VP0261, ad ♀, LViv; D: VP0261, ad ♀, RViv. Scale bar: 500  $\mu\text{m}$  for A, B; 569  $\mu\text{m}$  for C, D.

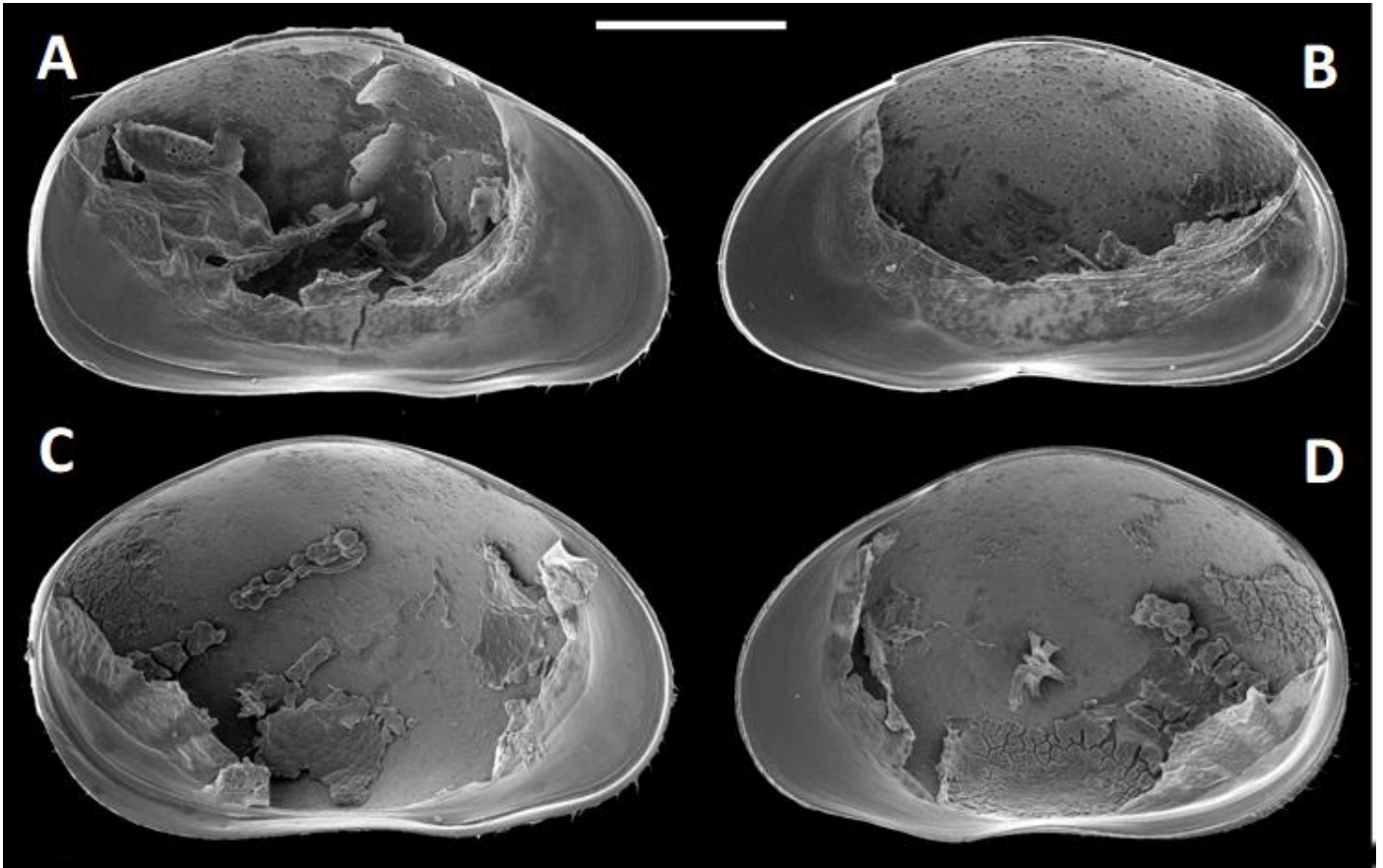


Figure S18. A-D: *Neglecandona lindneri*; E: *Fabeformiscandona* cf. *holzkampfi*. A: VP1617, ad ♀, LViv; B: VP1617, ad ♀, RViv; C: VP1613, ad ♂, LViv; D: VP1613, ad ♂, RViv; E: VP1756, juv, LViv. Scale bar: 500 µm for A-D, 208 µm for E.





Figure S19. A, B: *Ilyocypris bradyi*; C-F: *Ilyocypris decipiens*; G, H: *Ilyocypris gibba*. A: VP1732, ad ♀, LViv; B: VP1732, ad ♀, RViv; C: VP1679, ad ♀, LViv; D: VP1679, ad ♀, RViv; E: VP1736, ad ♂, LViv; F: VP1736, ad ♂, RViv; G: VP1591, ad ♀, LViv; H: VP1591, ad ♀, RViv. Scale bar: 321 µm for A, B; 500 µm for C, D; 395 µm for E, F; 434 µm for G, H.

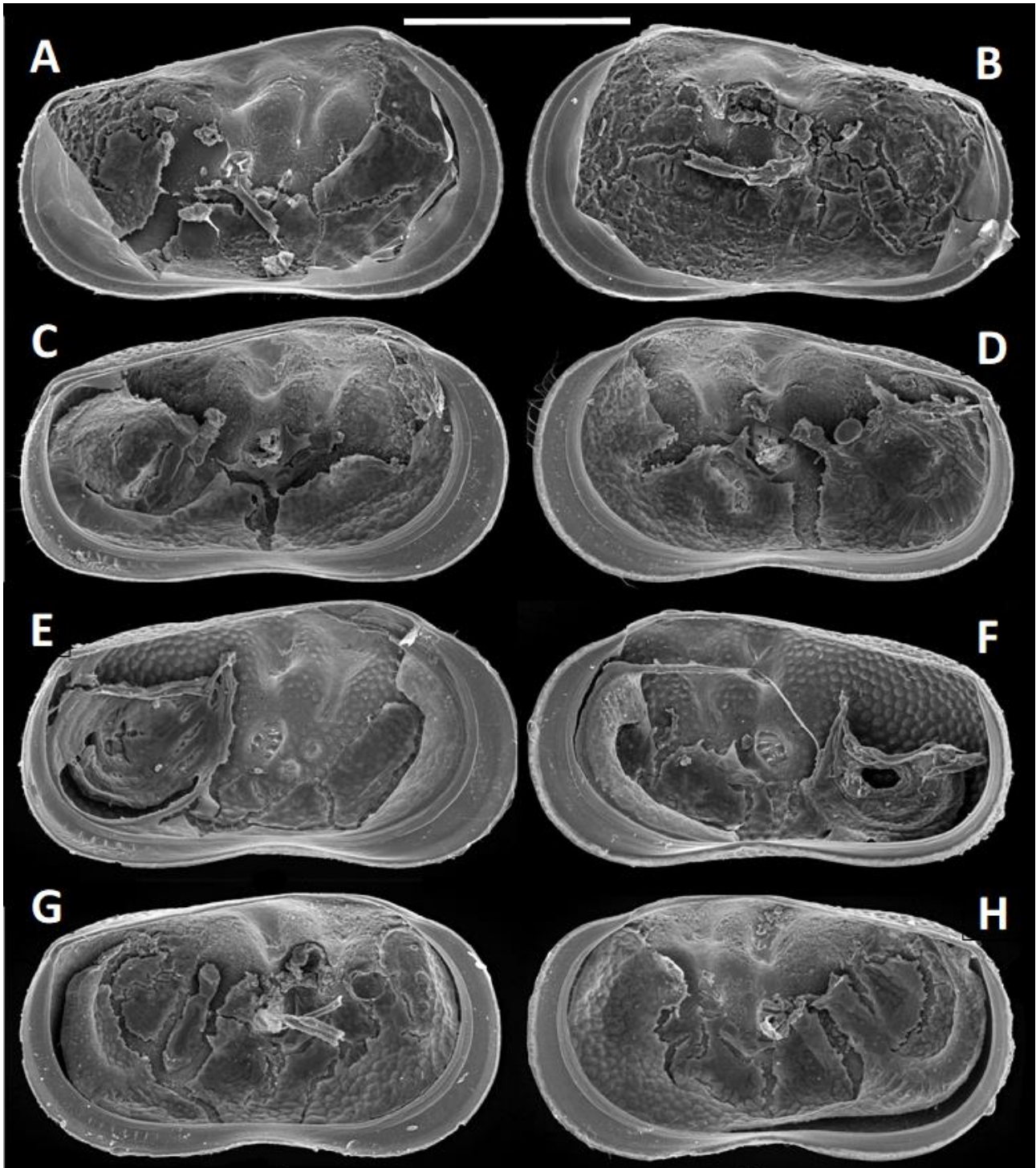


Figure S20. *Ilyocypris getica*. A: VP1666, ad ♀, RVeV; B: VP1666, ad ♀, LVeV; C: VP1665, ad ♀, CpDv; D: VP1702, ad ♀, LViv; E: VP1702, ad ♀, RViv. Scale bar: 500 µm.

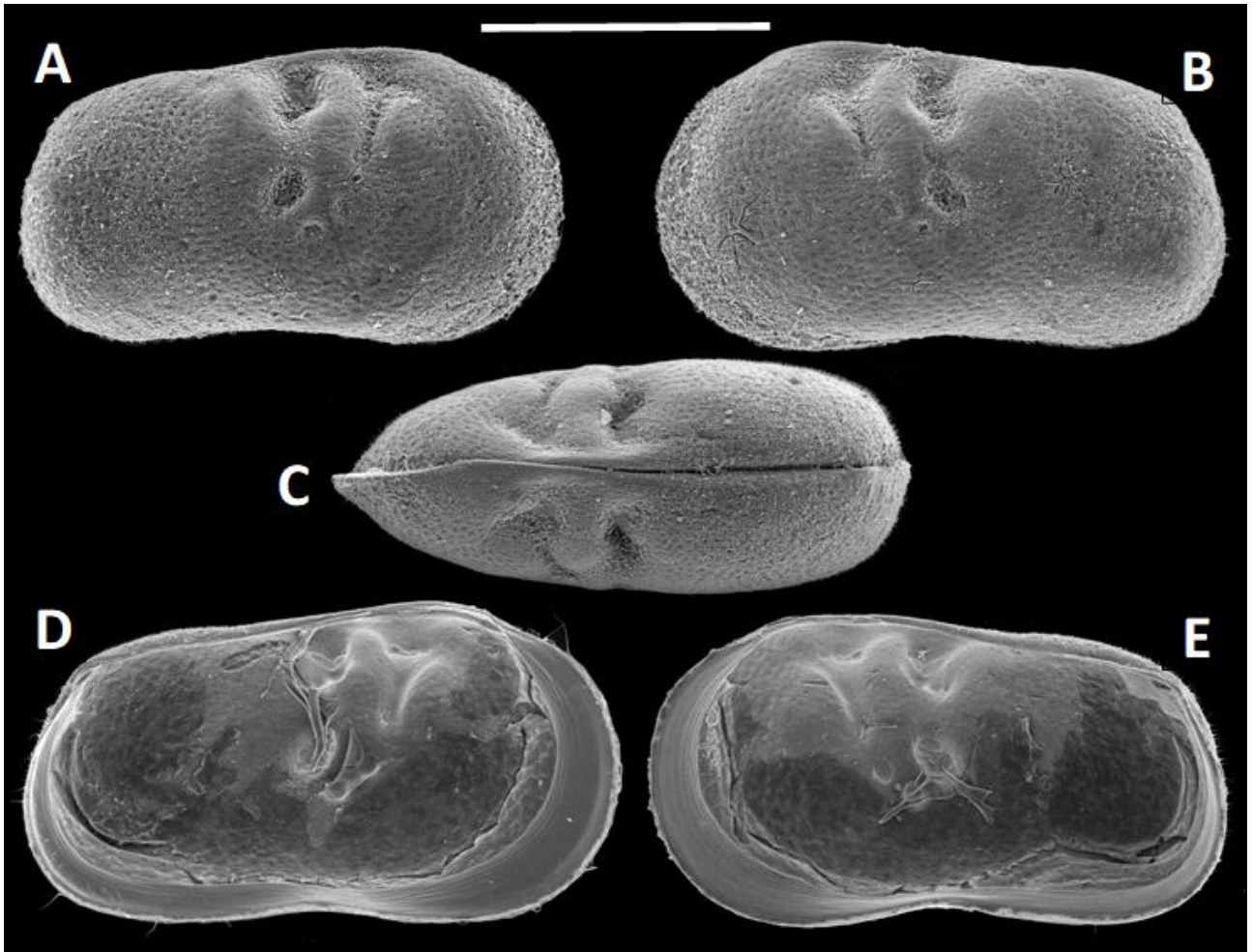


Figure S21. *Tyrrhenocythere amnicola*. A: VP1668, ad ♀, CpLlv; B: VP1672, ad ♀, LViv; C: VP1672, ad ♀, RViv; D: VP1618, ad ♂, LViv; E: VP1618, ad ♂, RViv. Scale bar: 500 µm for A-E.

