

AIWorld.com



Organized by  
Cambridge Innovation Institute

# THIRD ANNUAL aiworld CONFERENCE & EXPO

DECEMBER 3-5, 2018 | BOSTON, MA  
SEAPORT WORLD TRADE CENTER



## SHOW GUIDE

INTERNATIONAL HOSTS

**Canada**  
Consulate General of Canada in Boston  
Consulat général du Canada à Boston

**BOSTON GLOBAL FORUM**  
IDEAS THAT MATTER.  
**MICHAEL DUKAKIS**  
INSTITUTE FOR LEADERSHIP AND INNOVATION

CORPORATE HOSTS

**ANTWORKS**  
Reimagine . Recreate . Rethink

**IBM Watson**

**ORACLE** **intel**

**VERITONE**

PARTICIPATING SPONSOR

**MIT CSAIL**

PLATINUM SPONSORS

**accenture**

**DARKTRACE**

**DELLEMC**

**NUANCE**

**protabit**

**WorkFusion**

OFFICIAL PUBLICATIONS

**aitrends**

**Bio-IT World**



# Veritone **aiWARE**<sup>™</sup>

Veritone created aiWARE to empower every person and every organization with the power of AI. Our innovative platform features unrivaled native and partner cognitive engines and applications, as well as proprietary orchestration technology, to help you and your organization turn raw data into insight, intelligence and action.

Find out how you can make AI work for **you**.

[veritone.com](https://www.veritone.com) | **Booth 107**

# Conference at-a-Glance

= OPEN TO ALL WITH EXPO PASS

= CONFERENCE PASS ONLY

DAY 1   Monday (pg. 7-9)	DAY 2   Tuesday (pg. 11-13)	DAY 3   Wednesday (pg. 20-23)
<b>Continental Breakfast Keynote by Interactions</b> 8:20 – 8:45AM (Harborview)	<b>Continental Breakfast Keynote by Alegion</b> 8:20 – 8:45AM (Commonwealth Keynote Area)	<b>Morning Coffee &amp; Presentation by Glasswing</b> 8:20 – 8:45AM (Commonwealth Keynote Area)
<b>AI World Executive Summit: IDC</b> 8:55AM – 12:00PM (Harborview)	<b>Keynotes</b> 8:45 – 10:20AM (Commonwealth Keynote Area)	<b>Keynotes</b> 8:50 – 11:00AM (Commonwealth Keynote Area)
<b>Luncheon Presentation by CCC Information Systems</b> 12:20 – 12:45PM (Harborview)	<b>Exhibit Hall Hours</b> 10:20AM – 6:30PM (Commonwealth Hall)	<b>Exhibit Hall Hours</b> 11:00AM – 3:40PM (Commonwealth Hall)
<b>Workshop 1: Deploying and Scaling Enterprise AI Systems</b> 1:15 – 5:00PM (Amphitheater)	<b>Grand Opening Coffee Break</b> 10:20 – 10:50AM (Commonwealth Hall)	<b>Coffee Break</b> 11:00 – 11:45AM (Commonwealth Hall)
<b>Seminar 1: Enterprise Machine Learning &amp; Deep Learning</b> 1:15 – 5:00PM (Harborview)	<b>Keynotes</b> 10:50AM – 12:00PM (Harborview)	<b>AI Startup Pavilion</b> 11:30AM – 1:40PM (Expo Area)
<b>Seminar 2: AI in Personalized Medicine and Digital Health</b> 1:15 – 5:00PM (Waterfront 1)	<b>Keynote Exhibit Hall Presentation</b> 12:20 – 12:45PM (Commonwealth Keynote Area)	<b>AI Technology Solutions Theater</b> 11:30AM – 3:00PM (Expo Area)
<b>Keynote</b> 5:10 – 5:40PM (Harborview)	<b>AI Technology Solutions Theater</b> 1:00 – 5:20PM (Expo Area)	<b>Keynotes</b> 11:45AM – 12:45PM (Commonwealth Keynote Area)
<b>Roundtable Discussions</b> 5:45 – 6:45PM (Commonwealth Hall)	<b>AI Startup Pavilion</b> 1:00 – 5:50PM (Expo Area)	<b>Enterprise AI Strategies Theater</b> 1:00 – 2:00PM (Expo Area)
<b>Book Signing:</b> <b>AI in Business: 2019</b> Progress, Challenges and Setbacks <i>By John P. Desmond, AI Trends Editor</i>	<b>Enterprise AI Strategies Theater</b> 1:00 – 6:15PM (Expo Area)	<b>Seminar: Building AI-powered Natural Language Solutions</b> 1:20 – 4:20PM (Beacon Hill)
	<b>Track 1: Implementing Enterprise AI</b> 1:15 – 5:00PM (Amphitheater)	<b>Seminar: State of the Technology: Making Robots Intelligent, Cognitive and Aware</b> 1:30 – 4:20PM (Cambridge)
	<b>Track 2: Going from Big Data to AI</b> 1:15 – 5:00PM (Harborview 2)	<b>Track 6: AI in Healthcare</b> 2:00 – 5:00PM (Harborview 2)
	<b>Track 3: AI &amp; Real-Time IoT</b> 1:15 – 5:00PM (Waterfront 1)	<b>Track 7: AI in Pharma</b> 2:00 – 5:00PM (Harborview 1)
	<b>Track 4: AI in Healthcare</b> 1:15 – 5:00PM (Harborview 3)	<b>Track 8: Emerging Technologies &amp; the Future of AI</b> 2:00 – 5:00PM (Amphitheater)
	<b>Track 5: AI in Pharma</b> 1:15 – 5:00PM (Harborview 1)	<b>Track 9: Cognitive Computing</b> 2:00 – 5:00PM (Waterfront 1)
	<b>Workshop: Building Intelligent Assistants &amp; Chatbots</b> 1:15 – 5:00PM (Beacon Hill)	<b>Track 10: Strategic Business Functions &amp; Vertical Industry</b> 2:00 – 5:00PM (Harborview 3)
	<b>Refreshment Break</b> 3:00 – 3:45PM (Commonwealth Hall)	<b>Refreshment Break</b> 3:05 – 3:40PM (Commonwealth Hall)
	<b>Keynotes</b> 5:10 – 5:30PM (Commonwealth Keynote Area)	<b>5:00 PM Close of AI World 2018</b>
	<b>Reception</b> 5:30 – 6:30PM (Commonwealth Hall)	
	<b>Evening Session: Women in Technology International Panel</b> 6:30 – 7:30PM (Harborview 1) (Fee, please see page 20 for details)	
	<b>Evening Session: AnalyticsWEEK Meetup</b> 6:30 – 7:30PM (Harborview 2)	
	<b>Evening Session: Boston AI &amp; Deep Learning Meetup</b> 6:30 – 7:30PM (Harborview 3)	

**Tuesday, Dec. 4, 11:00am-12:00pm**  
(CII publishing booth #416)

**Wednesday, Dec. 5, 11:00am-12:00pm**  
(CII publishing booth #416)

Join 3,000+ business professionals and industry leaders for 3 days of sharing innovative insights and discoveries shaping the future of AI today

AIWorld.com



DECEMBER 3-5, 2018 | BOSTON, MA



# Welcome

Letter from the Chair:

Welcome to our third annual AI World Conference & Expo, the industry's largest Independent artificial intelligence (AI) business conference and expo. AI World is focused on the state of the practice of AI in the enterprise. This year's theme is accelerating innovation in the enterprise, and we've expanded the conference program, exhibit floor, and special events to ensure that you and your team learn everything necessary to invest wisely in AI technologies and intelligent automation solutions.



**Eliot Weinman**  
AI World Founder  
& Chair

AI is impacting consumers, businesses, and societies around the world. This year we are pleased to expand our global reach and welcome our international hosts and major research and media sponsors including the Canadian government, the Michael Dukakis Institute for Leadership and Innovation, XPRIZE, MIT CSAIL, IDC, MIT Sloan Management Review as well as our corporate hosts AntWorks, IBM Watson, Oracle, and Veritone.

Enterprises face conflicting priorities. Where do you turn to cut through the hype and determine how to prioritize AI strategies and technologies for your business? AI World is organized around this singular goal, enabling business leaders to learn how to use AI to build a competitive advantage, drive new business models and opportunities, reduce operational costs, and accelerate your innovation efforts.

On behalf of the entire team, thank you for attending AI World 2018!

## Table of Contents

Conference-at-a-Glance .....	3	AI Trends Advertisement .....	37
Welcome Letter.....	4	AI World Media, Association & Research Sponsors .....	38
Table of Contents .....	4	AI World Conference & Expo 2019 Dates .....	Back Cover
Executive Advisory Board .....	5		
Day 1 .....	7-8	<b>Advertisements</b>	
AIW App.....	10	Accenture.....	16
Roundtable Discussions .....	9	AntWorks.....	21
Day 2 .....	11-13	Consulate General of Canada .....	Inside Back Cover
AI Technology Solutions Theater .....	16	DataRobot .....	36
AI Startup Pavilion .....	16	DDN Storage.....	27
Enterprise AI Strategies Theater .....	17	Dell EMC .....	36
XPRIZE Innovation Program.....	17	IBM Watson .....	6
AI in Canada .....	18	Immuta .....	29
Workshop: Building Intelligent Assistants & Chatbots.....	19	MIT SMR Special Report.....	12
Seminar: Building AI-powered Natural Language Solutions .....	19	Nuance .....	23
Seminar: State of the Technology: Making Robots Intelligent, Cognitive and Aware .....	19	Optum .....	29
Day 3 .....	20-21	Oracle.....	32
Venue Floor Plan.....	24	PureStorage .....	30
Expo Hall Floorplan & Exhibitor List.....	25	Sinequa.....	35
Product Directory.....	26-27	Univa .....	35
Company Descriptions .....	28-35	Veritone .....	Inside Front Cover
Poster Presentations .....	36	WorkFusion.....	Inside Back Cover
AI World Exhibitors.....	37		

# Executive Advisory Board



**Steve Ardire**  
AI Startup Advisor & 'Merchant of Light'



**Sandy Aronson**  
Executive Director of IT, Partners HealthCare Personalized Medicine



**Amir Banifatemi**  
PhD, AI Lead, XPRIZE



**Robert Bogucki**  
Chief Technology Officer, deepsense.ai



**David Bray PhD**  
Executive Director, People-Centered Internet Coalition, Senior Fellow, Institute for Human-Machine Cognition



**Louis Culot**  
General Manager, Genomics, Philips Healthcare



**Dany De Grave**  
Senior Director Innovation Programs and External Networks, Sanofi Pasteur



**Tsvi Gal**  
Managing Director, Morgan Stanley



**Jeremy Gu**  
Senior Data Scientist, Uber



**Anju Gupta**  
Head of Sustainability Campaign, Syngenta



**Peter Henstock**  
PhD, AI & Machine Learning Technical Lead, Pfizer



**Rob High**  
IBM Fellow, VP and CTO, IBM Watson



**Judith Hurwitz**  
President, Hurwitz & Associates



**Tolga Kurtoglu**  
CEO, PARC



**Dale Kutnick**  
Senior Vice President, Emeritus, and Distinguished Analyst, Gartner



**Danny Lange**  
VP of AI and Machine Learning, Unity Technologies



**David Ledbetter**  
Data Scientist, Children's Hospital Los Angeles



**Ser Nam Lim, PhD**  
Research Scientist Manager, Facebook



**Dr. William Mark**  
President, Information & Computing Sciences, SRI



**Norbert Monfort**  
Vice President, IT Transformation & Innovation, Assurant



**Matthew O'Keefe, PhD**  
Vice President & Corporate Technologist, Cloud Business Group, Oracle Corp



**Bill Schrank**  
Senior Vice President, Sales, AntWorks



**Dave Schubmehl**  
Research Director Cognitive/AI Systems, IDC



**Anthony Scriffignano**  
SVP, Chief Data Scientist, Dun & Bradstreet



**Rudina Seseri**  
Founder and Managing Partner, Glasswing Ventures



**Richard Soley**  
Chairman and CEO, OMG®



**Kumar Srivastava**  
VP, Product & Strategy, Machine Learning, AI, BNY



**Chad Steelberg**  
Chairman & CEO, Veritone



**Heath Terry**  
Global Investment Research, Goldman Sachs



**Eliot Weinman**  
Founder & Conference Chair, AI World; Executive Editor, AI Trends



**Scot Whigham**  
CEO, Function (AI)

## HONORARY BOARD MEMBER



**Governor Michael Dukakis**  
JD, Harvard University

- 3 Term Governor of Massachusetts
- Chairman of The Michael Dukakis Institute for Leadership and Innovation
- Co-Founder, Chairman of The Board of Directors and Board of Thinkers, The Boston Global Forum
- Democratic Party Nominee for President of the United States, 1988
- Distinguished Professor of Northeastern University

The Michael Dukakis Institute is collaborating with AI World to publish reports and programs on AI-Government, including AIWS Index and AIWS Products.

To learn more, see the AI World website for updates or subscribe to AI Trends.



# Watson is AI from IBM, designed to make your business smarter

With Watson, you can make every employee your best employee. Watson has evolved into a range of advanced APIs, specialized tooling, and SaaS applications built for the enterprise. This means that Watson is built for complex use cases and designed to integrate with platforms that professionals use in their daily work – ensuring seamless access to the information you need to make the right decisions.

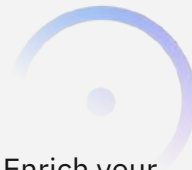
Learn more about Watson  
[ibm.com/watson](http://ibm.com/watson)

## Put Watson to work



### Accelerate research and discovery

Conduct rigorous, domain-specific research faster, uncovering insights and new opportunities by combing through diverse data sources and extracting the information you need.



### Enrich your customer interactions

Understand and communicate with your customers and employees around the clock, responding to their needs with tailored dialogue and personalized experiences.



### Anticipate and preempt disruptions

Monitor your systems and equipment at all times, allowing you to catch potential issues before they lead to bigger, more expensive problems.



### Recommend with confidence

Make more confident, targeted recommendations by drawing from a broad set of information and understanding the nuances of your context.



### Scale expertise and learning

Elevate the expertise of every employee by collecting individual know-how from your organization and combining it with the latest lessons learned in your industry.



### Detect liabilities and mitigate

Understand the written language of threat reports, regulations, and new findings, keeping your business current and shielding it from risk.

## Why Watson

With Watson, you own your insights. Only Watson gives you complete control of what's important to you, and the foundation of your competitive advantage—your data, models, learnings, and IP.

Watson learns more from less. Because it achieves high accuracy with lower training costs, Watson is the AI solution designed for the realities and constraints of proprietary, enterprise data.

## How to get started

Schedule a call with a Watson expert  
[ibm.biz/watsonscheduler](http://ibm.biz/watsonscheduler)



7:30 am Registration Open

(Commonwealth Hall)

(Harborview)

8:20 - 8:45 am Continental Breakfast & Presentation



### AI as a Brand Differentiator: How Consumer Views of AI are Shaping the Customer Experience Journey

*Jim Freeze, Chief Marketing Officer, Interactions*

Sponsored by:



11:30

## AI World Executive Summit



Is your business ready for harnessing AI and intelligent technologies? A recent study of 3,000 business executives from large enterprises globally has indicated that 85% of these organizations view the deployment of AI as strategically imperative, however less than 5% have seen any success to date. How will AI impact your customers, partners, and employees? These big questions and many more are on the minds of business leaders, CEOs, CMOs, CDOs, and CIOs. The AI World Executive Summit provides business executives with a strategic look at the state of the practice in enterprise AI across multiple vertical industries, including Healthcare and Financial Services.

8:55 Summit Kick Off



*Eliot Weinman, Founder and Conference Chair, AI World*

9:00 The AI-Enabled Enterprise is Closer Than You Think



*Scott Lundstrom, Group Vice President and General Manager, IDC*

9:20 Business Model Transformation with AI



*David Kiron, PhD, Executive Editor, MIT Sloan Management Review*

9:45 CXO Roundtable: Accelerating Innovation Across the Enterprise



*Moderator: Scott Lundstrom, Group Vice President and General Manager, IDC*



*Panelists: Anthony Sciffignano, PhD, Senior Vice President & Chief Data Scientist, Dun & Bradstreet*



*William Mark, PhD, President, Information & Computing Sciences, SRI*

10:05 Autonomous Cyber Defense: AI and the Immune System Approach

*Max Heinemeyer, Director, Threat Hunting, Darktrace*

10:25 Networking Coffee Break (Foyer)

10:50 Harnessing Financial Data: How AI Can Make Retail Banking and Payments Better and Safe



*Rivka Little, Research Director, Global Payment Strategies, IDC*

11:10 Accelerating Enterprise Machine Learning via Extreme Performance Database Machine



*Matthew O'Keefe, PhD, Vice President & Corporate Technologist, Cloud Business Group, Oracle Corp*

11:30 AI: The Force Behind Digital Transformation in Healthcare



*Lynne A. Dunbrack, Research Vice President, IDC Health Insights*

12:00 pm End of AI World Executive Summit

(Harborview)



12:10–12:20 XPRIZE Overview

*Amir Banifatemi, General Manager, Innovation and Growth, XPRIZE*



12:20 – 12:45 Conference Luncheon & Presentation

KEYNOTE: **The Game Changers**

*David Bliss, Vice President, Product Management, CCC Information Services*

Sponsored by:



1:15 pm Concurrent Afternoon Programs

(Amphitheater)

## WORKSHOP 1: Deploying and Scaling Enterprise AI Systems

Workshop Chair: Scot Whigham, CEO, Function (AI)



### 1:15 PANEL: AI Ecosystem

Moderator: Scot Whigham, CEO, Function (AI)  
 Panelists: Karl Pfeiffer, Principal Scientist, Function (AI)  
 Daveenia Beller, CEO, Infinite Resource Solutions, LLC  
 Stephen Straus, Managing Director, KUNGFU.AI

### 2:05 Deploying a Digital Employee

Larry Ross, Senior Operations Manager, Global Service Support, InterContinental Hotels Group (IHG)

### 3:00 Networking Refreshment Break (Foyer)

### 3:25 PANEL: Post-Implementation Managed Services

Moderator: Kwame Monthrope, Global CRM Executive, Accenture  
 Panelists: Kyle Scofield, Chief Customer Officer, Speakeasy AI  
 Maria Schwenger, Vice President, DevOps & Strategy, Honeywell  
 Ron Green, Chief Technology Officer, KUNGFU.AI

### 4:15 PANEL: AI Customer Engagement Analytics

Moderator: Carl Horton, Associate Partner, IBM  
 Panelists: Karl Pfeiffer, Principal Scientist, Function (AI)  
 Jason Kurtz, Executive Director, Analytics, Harte Hanks  
 Munish Goyal, Chief Data Scientist & Associate Partner, IBM

### 5:00 Close of Workshop

(Harborview)

## SEMINAR 1: Enterprise Machine Learning & Deep Learning

Seminar Chair: Robert Bogucki, CTO, deepsense.ai



### 1:15 State-of-the-Practice of Machine Learning in the Enterprise

Jan Kanty Milczek, Senior Data Scientist, deepsense.ai

### 1:45 The What, Why, and How of Deep Learning & Reinforcement Learning

Pawel Godula, Director of Customer Analytics, deepsense.ai.

### 2:20 Networking Refreshment Break (Foyer)

### 2:50 PANEL: Deep Learning in the Enterprise – Opportunities and Challenges

Moderator: Robert Bogucki, CTO, deepsense.ai  
 Panelists: Pawel Osterreicher, Director of Strategy & Business Development, deepsense.ai  
 Mainak Mazumdar, Chief Researcher Officer, Nielsen  
 Jeremy Wenxiao Gu, Senior Data Scientist, Uber  
 Danielle Ciofani, Director of Data Strategy & Alliances, Broad Institute of MIT

### 3:30 AI, Deep Learning in Healthcare

Jan Kanty Milczek, Senior Data Scientist, deepsense.ai  
 Pawel Osterreicher, Director of Strategy & Business Development, deepsense.ai

### 4:10 PANEL: AI, Deep Learning, and Cybersecurity

Moderator: Jan Kanty Milczek, Senior Data Scientist, deepsense.ai  
 Panelists: Philip Hunter, Research Fellow, Rethink  
 Yiqing Wang, PhD, Data Scientist, Microsoft  
 Max Heinemeyer, Director, Threat Hunting, Darktrace

### 4:50 Seminar Chair Closing Remarks

Robert Bogucki, CTO, deepsense.ai

### 5:00 Close of Seminar

(Waterfront)

## SEMINAR 2: AI in Personalized Medicine and Digital Health

Seminar Chair: Kamal Jethwani, MD, Senior Director, Connected Health Innovation, Partners HealthCare; Assistant Professor, Harvard Medical School

### 1:20 Personalized Medicine: A Vision for Research and Education

Dimitris Bertsimas, PhD, Operations Research Center and Sloan School of Management, MIT

### 1:50 Machine Learning Based Patient Subgroup Identification for Precision Medicine

Jie Cheng, PhD, Director, Data & Statistical Sciences, AbbVie

### 2:20 Networking Refreshment Break (Foyer)

### 2:50 Digital Health: The Use of Machine Learning and Deep Learning Techniques to Identify Patients and to Personalize Interventions

Kamal Jethwani, MD, Senior Director, Connected Health Innovation, Partners HealthCare; Assistant Professor, Harvard Medical School

### 3:10 AI-Enabled Digital Biomarker Development

Wei-Yi Cheng, PhD, Senior Data Scientist, Roche

### 3:30 Introducing New Standards for Patient Care: The Role of AI in Precision Oncology

Amélie Boichard, PharmD, PhD, Project Scientist, Center for Personalized Cancer Therapy, UCSD Moores Cancer Center

### 3:50 Reduction of High-Dimensional Genomic RNA-seq Data to Lower Dimensional Latent Space by Deep Learning

Shanrong Zhao, PhD, Director, Computational Biology, Pfizer

### 4:15 PANEL: AI in Personalized Medicine and Digital Health

Moderator: Amélie Boichard, PharmD, PhD, Project Scientist, Center for Personalized Cancer Therapy, UCSD Moores Cancer Center  
 Panelists: Dimitris Bertsimas, PhD, Operations Research Center and Sloan School of Management, MIT  
 Jie Cheng, PhD, Associate Director, Data & Statistical Sciences, Abbvie  
 Danielle Ciofani, Director, Data Strategy and Alliances, Broad Institute of MIT and Harvard

### 5:00 Close of Seminar



## 5:10 pm KEYNOTE: AI Trends & Driverless Self-Driving Cars: What's Now, What's Next

Lance B. Eliot, PhD, CEO, Techbrium, Inc., AI Trends Insider

(Harborview)

5:45 Attendee Roundtable Discussions see page 9 for details.

(Commonwealth Hall)

6:45 Close of Day



DAY 1 | Monday, December 3  
5:45 – 6:45 pm

# Attendee Roundtable Discussions

(Commonwealth Hall)

Join AI World speakers and moderators in lively table topic discussions covering a variety of critical AI business and technology topics. An informal, small group format allows participants to meet potential collaborators, share examples from their own work, vet ideas with peers, and be part of a group problem-solving endeavor. Food and drinks will be served.

## TABLE 1: AI and Cybersecurity

*Oleh Plakhtiy, Project Manager, deepsense.ai*

- Cybersecurity is no joke, yet many underestimate the threat. Do you know what's at stake at your organization?
- Many have started using machine learning and deep learning to bolster their cybersecurity, but some say it's just a buzz word. Would you feel safer with an AI-driven solution?
- AI has already proven effective in some areas of cybersecurity. Where should our focus be? What success stories would you like to share?

## TABLE 2: AI in Canada

*Ramneet Sran, Consul and Trade Commissioner, Consulate General of Canada*

- Why is Canada considered central to the story of AI?
- How is the Canadian government enabling future AI research?
- In what ways can enterprises work with Canada to accelerate AI usage and adoption?

## TABLE 3: AI Startups: Follow the Money

*Steve Ardire, Startup Advisor & Merchant of Light*

- Why AI-powered data-first startups will disrupt nearly every industry
- How enterprises can successfully work with startups to accelerate innovation
- Startups impacting the future of work with augmented intelligence

## TABLE 4: Building and Engaging Professional Communities with AI

*Yu-Feng Wei, Vizuro LLC*

- Leveraging AI to improve communities and participant engagement
- Building trust and facilitating transactions through AI
- Viral member acquisition
- Precision communication, marketing and matchmaking

## TABLE 5: Business Value of AI - Building a Successful Business Case using AI

*Boyd Davis, Managing Director, Applied Intelligence, Accenture*

## TABLE 6: Challenges and Rewards of Implementing Digital and AI in Complex Organizations

*Natalija Jovanovic, PhD, Head Digital Catalyst, Sanofi*

- Making employees, customers and partners the focus of digital transformation, not an afterthought
- Bringing stakeholders on our digital journeys in a gradual but well-paced way
- Best practices across a variety of situations

## TABLE 7: Emerging Business Models for AI within Healthcare

*Albine Martin, PhD, Entrepreneur-In-Residence, Johns Hopkins University*

- Case studies: Success and failures
- Partnership model: The leaders and followers
- Roadmap: Today's white paper

## TABLE 8: Enterprise Data Analytics

*Henry Morris, PhD, former Senior Vice President, Software and Services Research, IDC; Consultant, Analytics, Henry Morris Analytics*

- Can you get analytics benefits without Big Data?
- How do you acquire and prepare the data?
- Where do you acquire or rent the expertise?

## TABLE 9: How Can AI Enhance Your Pharmaceutical Clinical Projects?

*Hyunjin (Gene) Shin, PhD, Senior Scientist, Translational Bioinformatics/ Computational Biology Group, Takeda Pharmaceuticals*

- AI for imaging analysis: Current status and future direction
- Unstructured text and real-world evidence data: Using AI to capture features to improve machine learning performance
- AI for digital trials data
- AI for integrating different types of data
- Addressing interpretability and reproducibility issues for AI's clinical usages

## TABLE 10: Leveraging AI in Real Time IoT

*Said Tabet, Lead Technologist for IoT Strategy and OMG Board Member, DellEMC*

## TABLE 11: Removing Bias in Data and Algorithmic Models

*Judith Hurwitz, President, Hurwitz & Associates*

## TABLE 12: RPA & AI-powered Intelligent Automation

*Kashyap Kompella, CEO, RPA2ai*

- How to select the right RPA technology
- Scaling RPA: what no one tells you
- BYOB: Bring your Own Bot
- Giving RPA/AI superpowers to your employees

## TABLE 13: State of AI and Robotics

*Parna Sarkar-Basu, Owner, Brand and Buzz Marketing*

- Lessons learned from Rethink Robotics closing its doors
- How do we educate the masses that AI and robots won't replace humans?
- Three reasons why ease-of-use is vital to increasing the adoption of cobots

## TABLE 14: Succeeding with AI System Integrators

*Scot Whigham, CEO, Function (AI)*

- AI: A single source platform or collection of tools?
- AI Ecosystem Framework: what does an AI-based digital employee look like?
- How will your AI-based digital employee leverage your current tools?
- How do you map out AI use cases for your company?

## TABLE 15: How to Get Physicians Buy in and Make Them Implement AI

*Douglas Krakower, MD, Division of Infectious Diseases, Beth Israel Deaconess Medical Center*

## TABLE 16: Digital Innovation adoption Dynamics in the Pharmaceutical and Healthcare Industries

*Eduardo Cornejo, ITS Digital Innovation Market Lead, Sanofi*

- FDA oversight of innovation Liabilities
- Company culture and regulations
- Competitive Business case

# Download the AI World App



Search for "AI World 2018" in your app store to download

Download to access the most up-to-date schedule information!



Top App Users Win a Prize!



- Browse the agenda and create a custom schedule
- View speaker profiles
- Navigate the exhibit hall
- Find participants with common interests and set up 1-on-1 networking meetings
- Participate in live polling, surveys and event games
- Share your feedback
- Take notes and sync your schedule
- Discover local restaurants



## Like Tailgating With the Math Team

New Sports Analytics Podcast From  
*MIT Sloan Management Review*

New episodes available now on iTunes or wherever you listen to podcasts.

BROUGHT TO YOU BY  
**ticketmaster**



**MIT Sloan**  
Management Review



7:45 am Registration Open

(Commonwealth Hall)

(Commonwealth Keynote Area – Open to All)

8:20 - 8:45 am Continental Breakfast & Presentation



### AI Was Never Meant for Humans

Nathaniel Gates, CEO, Alegion

Sponsored by:



### 8:45 Chair Introduction

Eliot Weinman, Founder and Conference Chair, AI World



### 8:50 Honorary Introduction

Governor Michael Dukakis, JD, Harvard University; Chairman of The Michael Dukakis Institute for Leadership and Innovation; Co-Founder, Chairman of The Board of Directors and Board of Thinkers, The Boston Global Forum; Democratic Party Nominee for President of the United States, 1988; Distinguished Professor of Northeastern University



### 9:00 KEYNOTE: Algorithmic Models of Investor Behavior

Andrew W. Lo, the Charles E. and Susan T. Harris Professor, Professor of Finance, Director of the Laboratory for Financial Engineering, MIT Sloan School of Management



### 9:30 KEYNOTE: Getting on the Road to Artificial General Intelligence

Danny Lange, PhD, Vice President, AI and Machine Learning, Unity Technologies



### 10:00 KEYNOTE: AI at Work: From Programming to Learning

Jay Bellissimo, Managing Partner, Cognitive Process Transformation, IBM Services

10:20 Grand Opening Coffee Break

(Commonwealth Hall)

11:00 – 2:00 Concession Stand Open for Lunch in the Exhibit Hall

(Commonwealth Hall)

### 10:50 EXECUTIVE ROUNDTABLE: What Successful Adoption of AI Looks Like

(Harborview)

Machine learning may be poised to transform business, but actually adopting it is challenging. How have actual companies put it into practice? How did they hire the right people, how did they set up their teams, and what kinds of projects did they start with? This panel will explore the practical barriers that companies face to adopting AI – and to getting value from it.



**Moderator:**  
Walt Frick, Senior Editor, Harvard Business Review



**Panelists:**  
Norbert Monfort, Vice President, IT Transformation & Innovation, Assurant



Robert Bogucki, CTO, deepsense.ai



Tsvi Gal, Managing Director/CTO, Morgan Stanley



Anju Gupta, PhD, Head of Sustainability Campaign, Syngenta

### 11:30 EXECUTIVE ROUNDTABLE: Adoption & Integration of AI in Healthcare

Business and technology leaders from the healthcare sector assess how close AI has come to transforming the industry, predicting patient outcomes and impacting cost. This panel evaluates the adoption and integration of AI in Healthcare in addition to exploring the regulatory, technical, and patient data security challenges.



**Moderator:**  
David Ledbetter, Lead Data Scientist, Children's Hospital Los Angeles



**Panelists:**  
Yindalon Aphinyanaphongs, PhD, Assistant Professor, NYU Langone Medical Center



Vivian K. Mushahwar, PhD, Professor, Division of Physical Medicine & Rehabilitation, Department of Medicine, University of Alberta



Paul Bleicher, CEO, OptumLabs

(Commonwealth Keynote Area – Open to All)



### 12:20 – 12:45 pm KEYNOTE: Integrating Machine Learning into Enterprise Business Processes and Products

(open to all attendees)

Stephen Green, Director, Oracle Corp

1:15 pm Concurrent Afternoon Tracks

(Amphitheater)

**TRACK 1: Implementing Enterprise AI**

Track Chair: John Desmond, Editor, AI Trends

**1:15 Unchaining Growth from Cost with AI-Driven Automation**

Adam Devine, Senior Vice President, Marketing and Chief Evangelist, WorkFusion

**1:45 AI as a Strategic Enterprise Capability**

- Brian Pearce, Senior Vice President, Enterprise AI, Wells Fargo

- Krish Swamy, Senior Vice President, Enterprise Analytics and Data Science, Wells Fargo

**2:15 PANEL: Leading Data Strategy and Culture in the Age of AI**

Moderator: Vishal Kumar, CEO, President, AnalyticsWEEK

Panelist: Curt Savoie, Program Director, Global Smart Cities Strategies, IDC

- Deeksha Joshi, Managing Director, Corporate Strategy and Research, Liberty Mutual Insurance

- Bill Schrank, Senior Vice President, Sales, AntWorks

**3:00 Refreshment Break in the Exhibit Hall with Poster Viewing (Commonwealth Hall)**

**3:45 Safety and Artificial Intelligence – Certification and Testing**

Francis Govers III, Autonomy Lead, Bell Helicopter

**4:15 Protecting Facebook Platform**

Ser-Nam Lim, PhD, Research Scientist Manager, Facebook

(Harborview 2)

**TRACK 2: Going from Big Data to AI**

Track Chair: Judith Hurwitz, President, Hurwitz & Associates

**1:15 Winning Blueprint for the Intelligent Enterprise**

Boyd Davis, Managing Director, Applied Intelligence, Accenture

**1:45 Case Study: Big Data to AI at State Street**

William Kinlaw, Senior Managing Director, State Street

**2:15 PANEL: Monetizing Data via new Digital Business Models**

Moderator: Shriram Ramanathan, PhD, Senior Analyst, Lux Research

Panelists: Anju Gupta, Head, Sustainability Campaign, Syngenta - Laurie Menoud, Investment Manager, BASF Venture Capital - Seth Jamison, Principal Solutions Architect, FlashBlade, Pure Storage

**3:00 Refreshment Break in the Exhibit Hall with Poster Viewing (Commonwealth Hall)**

**3:45 PANEL: Bringing Big Data Benefits to Small Data Operations**

Moderator: Henry Morris, PhD, former SVP, Software and Services Research, IDC; Consultant, Analytics, Henry Morris Analytics

Panelists: Kashyap Kompella, CEO, RPA2ai - David Colarusso, Professor, Suffolk University - Tulia Plumettaz, Associate Director, Data Science, Wayfair

**4:25 PANEL: Enterprise Strategies for Real-Time Data Analysis**

Moderator: Judith Hurwitz, President, Hurwitz & Associates

Panelists: Sanjeeva L. Fernando, Vice President & Head, OptumLabs Center for Applied Data Science (CADS), OptumLabs - David Sweenor, Global Analytics & Industry Marketing Leader, TIBCO Software, Inc.

(Waterfront 1)

**TRACK 3: AI and Real-Time IoT**

Track Chair: Said Tabet, Lead Technologist for IoT Strategy and OMG Board Member, DelleMC

**1:15 The State of AI and IoT**

Said Tabet, Lead Technologist for IoT Strategy and OMG Board Member, DelleMC

**1:45 PANEL: Deep Learning for Smart Facilities**

Moderator: Les Yeamans, Founder & Executive Editor, RTInsights

Panelists: Brad Klensz, Principal Systems Architect, SAS

- Calvin Smith, Director & Head of IoT Partner Engineering, Wipro

- Ken Hatano, Chief Specialist, Software & AI Technology Center Toshiba Digital Solutions Corporation, Toshiba Digital Solutions Corporation

**2:25 PANEL: Provisioning Enterprise Connected Things with Trust and Intelligent Automation**

Moderator: Wael William Diab, Steering Committee, Industrial Internet Consortium; Huawei

Panelist: Robert Martin, Senior Principal Engineer, MITRE

- Michael Thomas, Systems Architect, SAS - Nisarg Desai, Director of Product Management, GlobalSign

**3:00 Refreshment Break in the Exhibit Hall with Poster Viewing (Commonwealth Hall)**

**3:45 PANEL: Transforming the Manufacturing Industry**

Moderator: Ed Burns, Editor, TechTarget

Panelist: Shi-Wan Lin, CEO & Co-Founder, Thingswise - Edy Liongosari, Chief Research Scientist, Accenture - Greg Bollella, CTO, The Internet-of-Things, VMWare

**4:25 FIRESIDE CHAT: AI as Strategic Enabler for the Automotive Sector**

Moderator: Richard Soley, PhD, Chairman and CEO, Object Management Group (OMG)

Panelists: John Roesse, Global Chief Technology Officer, Dell Technologies - James Kuffner, CEO, Toyota Research Institute Advanced Development (TRI-AD)

(Commonwealth Keynote Area – Open to All)

5:10 pm KEYNOTE: The Future of Practical AI



Tyler Schulze, Senior Vice President, Veritone Partner Ecosystem



Aaron Edell, Senior Director, Veritone Business Development

5:30 - 6:30 Networking Reception in the Exhibit Hall with Poster Viewing

(Commonwealth Hall)

1:15 pm Concurrent Afternoon Tracks

(Harborview 3)

**TRACK 4: AI in Healthcare**

Artificial intelligence in the healthcare industry is predicted to save \$150 billion annually for the US. As such, AI is being rapidly deployed in many areas of the healthcare landscape. This event will primarily focus on the Providers, attracting CIOs, CTOs, IT and Informatics Experts along with senior Physicians and Clinicians from the leading US hospitals who will share their experiences of using AI in the clinical care and hospital operations environment.

Track Chair: Sandy Aronson, Executive Director of IT, Partners HealthCare Personalized Medicine

**1:15 AI in Healthcare: Applications, Maturity and Outlook**

Shriram Ramanathan, PhD, Senior Analyst, Lux Research

**1:45 Integrating Algorithmic Generated Techniques into Clinical Care and Decision Making**

Sandy Aronson, ALM, MA, Executive Director of IT, Partners HealthCare Personalized Medicine

**2:15 AI for Infection Detection and Prevention**

Erica S. Shenoy, MD, PhD, Associate Chief, Infection Control Unit, Massachusetts General Hospital; Assistant Professor of Medicine, Harvard Medical School

**3:00 Refreshment Break in the Exhibit Hall with Poster Viewing (Commonwealth Hall)**

**3:45 Examining the Use of AI for Imaging in Clinical Care**

Aalpen A. Patel, MD, Chair, Department of Radiology, Geisinger Health

**4:05 Developing and Translating AI-Enabled Applications for Healthcare**

Katherine Andriole, PhD, Director of Research Strategy and Operations, MGH & BWH Center for Clinical Data Science; Associate Professor of Radiology, Harvard Medical School

**4:25 PANEL: How Are Organizations Leveraging AI to Drive Operational Intelligence?**

Moderator: Adam Landman, MD, Vice President and CIO, Brigham and Women's Hospital

Panelists: Karim Botros, Chief Strategy and Innovation Officer, The MetroHealth System

- Sandy Aronson, Executive Director of IT, Partners HealthCare Personalized Medicine

- Mary Margaret Jacobs, Director, Capacity Management, The Johns Hopkins Hospital

(Harborview 1)

**TRACK 5: AI in Pharma**

Investment and the application of AI in the pharmaceutical industry is rapidly gaining momentum. We bring together CEOs, CIOs, CTOs and Global AI, IT and Informatics Experts from leading pharmaceutical and technology companies to give strategic and visionary talks based on use cases throughout the drug development pipeline.

Track Chair: Peter Henstock, PhD, AI & Machine Learning Lead, Pfizer

**1:15 ProtaBank: AI and Machine Learning for Protein Engineering. Where's the Data?**

Barry Olafson, PhD, CEO, Protabit LLC

**1:40 The Potential for Advanced Analytics in the Pharmaceutical Industry**

Michael Ringel, PhD, Senior Partner and Managing Director, Boston Consulting Group (BCG)

**2:00 CO-PRESENTATION: Artificial Intelligence Accelerants in Oncology Informatics**

- Tom Plasterer, PhD, US Cross-Science Director, R&D Information, AstraZeneca  
- Jonathan Dry, PhD, Director of Bioinformatics, Oncology, AstraZeneca

**2:20 Why Is the Pharmaceutical Industry Finding AI so Difficult?**

Peter Henstock, PhD, AI & Machine Learning Lead, Pfizer

**2:40 Data Store: Making All Data Machine Learnable at NIBR**

John R. Walker, Head of Core Data and Analytics, NIBR Informatics, Novartis

**3:00 Refreshment Break in the Exhibit Hall with Poster Viewing (Commonwealth Hall)**

**3:45 FEATURED PRESENTATION: Integrating AI Workflows in Drug Discovery**

John Baldoni, PhD, Senior Vice President, In silico Drug Discovery, GlaxoSmithKline

**4:05 Talk Tile to be Announced**

Eric Neumann, PhD, CEO & Founder, Aidaka

**4:25 PANEL: The Use of AI to Disrupt Drug Discovery: How to Reduce Time and Costs and Increase Throughput**

Moderator: Alex Zhavoronkov, PhD, Founder, Insilico Medicine

Panelists: Mark Davies, Vice President, Biomedical Informatics, Benevolent AI  
- Jim Brase, CTO & Interim Co-Lead, ATOM and Deputy Associate Director for Computation, Lawrence Livermore National Laboratory

- Slava Akmaev, PhD, Senior Vice President & Chief Analytics Officer, BERG  
- Eric Neumann, PhD, CEO & Founder, Aidaka

- Ed Addison, CEO, Cloud Pharmaceuticals

(Commonwealth Keynote Area – Open to All)

**5:10 pm KEYNOTE: The Future of Practical AI**



Tyler Schulze, Senior Vice President, Veritone Partner Ecosystem



Aaron Edell, Senior Director, Veritone Business Development

5:30 - 6:30 Networking Reception in the Exhibit Hall with Poster Viewing

(Commonwealth Hall)

**ANTWORKS™**

Reimagine • Rethink • Recreate

# INTELLIGENT RPA FOR INTELLIGENT BUSINESS.

Are you ready to harness the power of AI, Machine Learning, Machine Vision and RPA technologies for smarter business? Visit AntWorks™ at booth no.: 407 to experience how our Integrated Intelligent Automation Platform can ingest and process all kinds of business data — creating smart and cost-effective AI solutions for your enterprise. It's time to reimagine, rethink, and recreate your business data model for the future.

## Serious capabilities for serious business:

- Our integrated intelligent automation stack — with Cognitive Machine Reading, RPA, Natural Language Processing — ANTstein™
- Our automation solutions are powered by fractal science — the intelligent segregation of data into comprehensible patterns — that plays an integral role in Machine Reading
- ANTstein™ is designed for the users by the users, keeping it simple and code free

**Join us at AI WORLD, Boston,  
from December 3<sup>rd</sup> – 5<sup>th</sup>, 2018.**



 @AntWorksGlobal

 AntWorks

# aiworld SPECIAL EVENTS (Pages 16-19)

feature dedicated programming to help your company stay on top of the complete range of AI technologies and solutions available in today's marketplace. Your pass includes:

## Plenary Keynote Sessions

IN THE COMMONWEALTH KEYNOTE AREA:

### TUESDAY

8:20 – 10:20 am (pg. 11)  
12:20 – 12:45 pm (pg. 11)  
5:10 – 5:30 pm (pg. 12)

### WEDNESDAY

8:20 am – 12:45 pm (pg. 20)

### ON THE EXPO FLOOR:

70+ Exhibitors (pg. 25-27)

Tuesday 10:20 am – 6:30 pm  
Wednesday 11:00 am – 3:40 pm

### Presentation Theatres

AI TECHNOLOGY SOLUTIONS THEATRE (pg. 16)

ENTERPRISE AI STRATEGIES THEATRE (pg. 17)

AI STARTUP PAVILION (pg. 16)

### Panels & Presentations

XPRIZE (pg. 17)

WOMEN IN TECHNOLOGY INTERNATIONAL (WITI; pg. 17)

AI IN CANADA (pg. 18)

1-ON-1 NETWORKING  
schedule meetings through  
the AI World Mobile App!

aiworld  
**SPECIAL EVENTS**  
OPEN TO ALL

# INTELLIGENT TECH NEEDS INGENIOUS HUMANS

Intelligent machines guided by intelligent people. See how Applied Intelligence meets business challenges at [accenture.com/appliedintelligence](https://www.accenture.com/appliedintelligence)

**NEW APPLIED NOW**



# AI Technology Solutions Theater

Tuesday and Wednesday December 4-5, 2018

**aiworld**  
**SPECIAL EVENTS**  
OPEN TO ALL

Hear from leading solution providers on machine learning, deep learning, computer vision and other intelligent automation applications. Attend talks over two days specifically designed to optimize your existing business processes and address the need to scale automation and analytics across the enterprise.

[aiworld.com/ai-technology-solutions-theater](http://aiworld.com/ai-technology-solutions-theater)

## TUESDAY, DECEMBER 4, 2018

### 1:00 pm The Next Era of Services: Achieving Personalized Insights with Deep Learning



Michael Shepherd, Lead AI Research Technologist, Dell EMC Support and Deployment Services, ISG, Dell EMC

### 1:30 Improved Security with Integrated Authentication and Fraud Prevention Technology



Mia Puzo, Security SME Manager Security Product Management, Nuance Communications, Inc.

### 2:00 AI for Executives



Jonathan Dahlberg, Data Scientist, DataRobot

### 2:30 Accenture Insights Platform – a Versatile, Scalable Technology Foundation for AI



Jai Malhotra, Managing Director, Applied Intelligence, Accenture

### 3:00 UiPath Presentation



UiPath Speaker to be announced

### 3:30 Digital Operations: Scaling Automation with AI-driven RPA



James Welden, Senior Vice President, Strategic Sales, WorkFusion

### 4:00 Operationalizing Machine Learning: Solving IT, Security & Business Problems with Machine Learning



Manish Sainani, Director - Product Management, Splunk  
Andrew Stein, Principal Product Manager, Machine Learning and Advanced Analytics, Splunk

### 4:30 Architecting AI-Ready Infrastructure



Kurt Kuckein, Senior Director, Marketing, DDN Storage

### 5:00 Transforming your Business DNA with AI!



Manoj Suvarna, HPC & AI Category Manager, Hewlett Packard Enterprise

## WEDNESDAY, DECEMBER 5, 2018

### 11:30 am Dataiku Presentation



Speaker to be announced

### 12:00 pm Context is King: Outsmart Business Challenges Using Artificial Intelligence



Bryan Bell, Executive Vice President, Expert System

### 12:30 Three Steps to Applying Machine Learning to Self-Driving Vehicles

Ryan Gariepy, CTO, OTTO Motors

### 1:00 How to Dramatically Improve Data Transfer Performance for AI Applications



Joseph Hansen, Technical Sales & Delivery Executive, IBM Hybrid Cloud, Aspera, an IBM Company

### 1:30 So What Do I Do with This New Insight? ...Ask diwo- a Cognitive Decision-Making Platform



Krishna Kallakuri, President, Founder, diwo

### 2:00 Edge to Core to Cloud Architecture for AI



Dave Arnette, Senior Solution Architect, NetApp

### 2:30 Origenis AI Platform for New Chemical Entity Drugs



Michael Thormann, PhD, Chief Scientific Officer, Origenis



## AI Startup Pavilion

Tuesday and Wednesday December 4-5, 2018

[aiworld.com/ai-startup-pavilion-and-theater-presentations](http://aiworld.com/ai-startup-pavilion-and-theater-presentations)

AI technology and automation solutions are not the exclusive domain of large vendors and suppliers. See live demonstrations and meet new entrants developing products, services, processes and platforms to address growing enterprise market needs.

## TUESDAY, DECEMBER 4, 2018

### 11:15 am XPRIZE: Innovative Technologies to Solve Grand Challenges

Devin Krotman, Director, Global Learning XPRIZE | IBM Watson AI XPRIZE

### 1:00 pm PANEL: AI: Follow the Money

Moderator: Steve Ardire, AI Startup Advisor & 'Merchant of Light'

Panelists:

Upal Basu, Partner, NGP Capital  
Ilya Gelfenbeyn, Head of Google Assistant Investments, Google  
Janet Bannister, Partner, Real Ventures

### 1:40 Using Neural Embeddings To Leverage Data



Matt Doherty, Founder and CTO, RESOLUTE.AI

### 2:05 Lucid Enterprise AI- Turn Your Data into Enterprise AI Outcomes



Russell Blattner, CEO and Co-Founder, Lucid

### 2:30 Building Intelligent Websites & Apps: Leveraging AI in Next-Generation Virtual Assistants



Barry Bedell, PhD, CEO, Dynamicly Inc.

### 3:00 Are You There Product? It's me A.I.!



Paul Blase, MBA, CEO, Speciate AI

### 3:30 The Power of Fractal Science in the IA and AI world...Dare to be Infected?



Bill Schrank, Senior Vice President, Sales, AntWorks

### 4:00 Derive Insights from Satellite Images



Abhijit Ray, Co-founder and Chief Digital, Architect, Aventior, Inc.

### 4:30 AI Everywhere - Enable IOT to Scale



Darko Dragicevic, Bragi EVP Partners & Solutions

## WEDNESDAY, DECEMBER 5, 2018

### 12:00 pm AI Startup Awards



### 12:00 pm AI Startup Award Winner Announcement

Jeff Orr, Conference Content Director, AI World





# Enterprise AI Strategies Theater

Tuesday and Wednesday December 4-5, 2018

[aiworld.com/ai-strategies](http://aiworld.com/ai-strategies)

**aiworld**  
**SPECIAL EVENTS**  
OPEN TO ALL

## TUESDAY, DECEMBER 4, 2018

### 1:00 PANEL: AI in Government

Moderator: John Desmond, Editor, AI Trends

Panelists:

Marc Mancher, US Government and Public Services Robotics & Intelligent Automation Lead, Deloitte Consulting LLP

Wayne Haubner, Chief Innovation Officer, Synergi Partners

Nguyen Anh Tuan, CEO, Boston Global Forum (BGF)

Brad Mascho, Chief Artificial Intelligence Officer, NCI

### 1:45 PANEL: Succeeding with AI System Integrators

Moderator: Keith Kirkpatrick, Principal Analyst, Tractica

Panelists:

Scot Whigham, CEO, Function (AI)

Larry Ross, Senior Operations Manager, InterContinental Hotels Group (IHG)

Kwame Monthrope, Global CRM Executive, Accenture

Carl Horton, Associate Partner, IBM

### 2:30 PANEL: Use Cases for AI and High-Performance Computing

Moderator: Keith Kirkpatrick, Principal Analyst, Tractica

Panelists:

Christopher Carothers, PhD, Technology & Academic Advisor, Research & Development, Lucid

Gary Tyreman, CEO, Univa

Margrit Betke, PhD, Professor of Computer Science, Boston University

### 3:15 Breaking Bias

Kesha Williams, Senior Software Engineer, Chick-fil-A Corporate

### 4:00 PANEL: Digital Transformation in Financial Services

Moderator: Denise Valentine, Senior Analyst, Aite Group

Panelists:

Norbert Monfort, Vice President, IT Transformation & Innovation, Assurant

Brian Pearce, Senior Vice President, AI Enterprise Solutions, Wells Fargo

Srinivas Krovvidy, Director, Advanced Analytics Enablement, Fannie Mae

Chida Khatua, CEO, EquBot

### 4:45 PANEL: RPA/Intelligent Automation

Moderator: Don Schuerman, CTO and Vice President, Product Marketing, Pegasystems

Panelists:

Kashyap Kompella, CEO, RPA2ai

Lalitha Kompella, Vice President & CTO, Global Head of Intelligent Automation, Genpact

Francis Carden, Vice President, Robotics and Transformation, Pegasystems

James Welden, Senior Vice President, Strategic Sales, WorkFusion

### 5:35 PANEL: AI in Legal

Moderator: Matt Karlyn, JD, Co-Chair Technology Industry Team, Foley & Lardner LLP

Panelists:

David Colarusso, PhD, Professor, Suffolk University

Amanda L. Brown, JD, Legal Innovation Advisor + Counsel, InnoLegal Services, PLLC

Antigone Peyton, JD, Chair, Intellectual Property and Technology Group, Protora Law PLLC

## WEDNESDAY, DECEMBER 5, 2018

### 1:00 The Importance of Enterprise AI Industry Standards, According to ISO/IEC

Wael William Diab, Chair of ISO/IEC Standards JTC 1/42 Working Group; Steering Committee, Industrial Internet Consortium; Senior Director, Huawei

### 1:30 InvenAI Recognizing Early Signals of Breakthrough Innovation and Disruption Using AI and ML

Aman Kant, Chief Business Officer, InvenAI Corporation

Sponsored by:  
**InvenAI**  
INNOVATE WITH INTELLIGENCE

## XPRIZE Innovation Program



Monday – Tuesday, December 4-5, 2018

Attend AI World and hear from some of the most intriguing XPRIZE innovators. XPRIZE helps the global crowd, be they experts or laypeople, old or young, to create the breakthroughs that pull the future forward. XPRIZE creates incentive competitions to entice the crowd to take action and bring us closer to a world of abundance. The solutions to the world's problems won't come from one person or one country or one industry.

Monday, December 3

(Harborview 1-2-3)

12:10 - 12:20 XPRIZE Overview

Amir Banifatemi, General Manager, Innovation and Growth, XPRIZE

Tuesday, December 4, 2018

(Commonwealth)

AI STARTUP PAVILION

11:15 – 11:35 XPRIZE: Innovative Technologies to Solve Grand Challenges

Devin Krotman, Director, Global Learning XPRIZE | IBM Watson AI XPRIZE

**XPRIZE**

## Panel: Future of Work: Will Robots Replace Humans or Create New Job Types?



Tuesday, December 4 | 6:30 – 7:30 pm | WITI members: free | Non-members: \$15

Imagine a world where artificial intelligence-assisted healthcare technicians will be able to diagnose, prescribe and treat humans and animals. Emerging technologies and robotic assistants will help the elderly or disabled, cost-effectively. They will take on human attributes and follow voice commands. Trainable robots will be the norm and collaborative robots or co-bots will help people work more effectively and efficiently. In reality, this will be our world in the very near future. As chess grandmaster Garry Kasparov says – we should be thinking of intelligent machines as augmented intelligence vs artificial intelligence.

The panelists will discuss:

- The future of artificial intelligence
- Emerging technologies and their impact on society
- Role of Intelligent machines and chatbots – at home and in business
- and more ...

Moderator: Parna Sarkar-Basu, CEO, Brand and Buzz Marketing

Panelists: Bethany Plaza, Vice President, IT Services, RCM Technologies  
Stephen Pappas, Head, North American Operation & Senior Vice President, Panviva

**WITI** women in technology international  
build. empower. inspire.



Canada is a proud International Host of AI World and will be participating in the AI World conference and expo programs. Canada has become a hotbed of AI activity where the public sector, academic community and private sector are working together to advance the possibilities of AI. Hear from some of these leaders and AI start-ups, and learn first-hand how your enterprise can take advantage of all that Canada's AI initiatives have to offer.

**Canada**   
Consulate General of Canada in Boston  
Consulat général du Canada à Boston

**Tuesday, December 4 | 11:30 am**

(Harborview)



**EXECUTIVE ROUNDTABLE:**  
**Adoption & Integration  
of AI in Healthcare**

Panelist: *Vivian K. Mushahwar, PhD, Division of Physical Medicine and Rehabilitation, Department of Medicine, University of Alberta*

**AI STARTUP PAVILION**

**Tuesday, December 5 | 1:00 pm**



**AI: Follow the Money**

Panelist: *Janet Bannister, Partner, Real Ventures*

**Wednesday, December 5 | 11:45 am**



(Commonwealth Keynote Area)

**AI in Canada**

Panelist: *Inmar Givoni, PhD, Machine Learning at University of Toronto; Autonomy Engineering Manager, Uber ATG*

**Wednesday, December 5 | 12:10 pm**



(Commonwealth Keynote Area)

**EXECUTIVE ROUNDTABLE:**  
**State of International  
AI Initiatives and their Impact  
on the Global 2000**

Panelist: *Benji Sucher, Vice President and COO (Layer 6 AI), TD Bank Group*

**EMERGING TECHNOLOGIES & THE FUTURE OF AI**

**Wednesday, December 5 | 2:30 pm**

(Amphitheater)



PANEL:

**Emerging AI Trends: Removing  
Bias and Explainable AI (XAI)**

Panelist: *Sheldon Fernandez, CEO, DarwinAI*

**AI TECHNOLOGY SOLUTIONS THEATER**

**Wednesday, December 5 | 12:30 pm**



**Three Steps to Applying Machine  
Learning to Self-driving Vehicles**

Panelist: *Ryan Gariepy, CTO, OTTO Motors*

**SEMINAR BUILDING AI-POWERED NATURAL  
LANGUAGE SOLUTIONS**

**Wednesday, December 5 | 3:20 pm**

(Beacon Hill)



PANEL: **State of the Technology:  
AI-driven Speech  
Recognition and NLP**

Panelist: *Joseph Fung, CEO and Co-founder, Kiite*



**Download the Artificial  
Intelligence in Canada eBook**

Visit [AITrends.com](http://AITrends.com) and  
select eBooks under  
the Resources tab.



**WORKSHOP:**

## Building Intelligent Assistants & Chatbots

[aiworld.com/Intelligent-Assistant](http://aiworld.com/Intelligent-Assistant)



Speech recognition and natural language processing technology allows interacting with digital systems using human language in text or speech. A company can use the technology to improve customer service, not only in the call center, but through chatbots on web sites, apps on mobile phones, messaging services, home speakers, through the major personal assistants, and more. The technology can also make

employees more effective within organizations in tasks such as using enterprise software or on-the-job training. This workshop discusses tools available to help develop conversational solutions and practices that make those solutions effective.

**Tuesday, December 4, 2018** (Beacon Hill)

**1:15 pm Digital Assistants: The Power of Conversation**

*William Meisel, PhD, CEO, TMA Associates*

**2:05 You Had Me at "Hello": Using AI to Deliver the True Omnichannel Promise of Personalization, Persistence, and Context in Customer Care**

*Mary McKenna, Director of Product Management, Interactions  
Priyanka Tiwari, Senior Product Marketing Manager, Interactions*

**2:30 How to Build Happy Bots in Difficult Environments**

*Jeff Adams, CEO, Cobalt Systems*

**3:15 The Roadmap: What's Available and How to Use It**

*William Meisel, PhD, CEO, TMA Associates*

**3:55 Expert-in-the-Loop Machine Learning: A New Approach to a Better Customer Experience**

*Antony Brydon, CEO, Directly*

**SEMINAR:**

## Building AI-Powered Natural Language Solutions

[aiworld.com/Natural-Language](http://aiworld.com/Natural-Language)



*Host: William Meisel, PhD, CEO, TMA Associates*

Computers dealing with human language are one of the major breakthroughs in AI. With similar advances in speech recognition, natural language processing technology can accept either voice or text input. The result is understanding. That understanding can be used in conversational systems such as virtual agents, digital assistants,

and chatbots, conversing with customers or employees through many channels. In addition, the technology can help analyze "big data," summarizing its conclusions or finding answers to specific questions. Sessions in this track include:

- Interpreting Human Language: The Power and Limits of Natural Language Technology
- State of the Technology: AI Driven Speech Recognition and NLP
- Case Studies in Using Conversational Technology
- Automating Customer Service and Technical Support in Call Centers

**Wednesday, December 5, 2018** (Beacon Hill)

**1:20 pm Interpreting Human Language: The Power and Limits of Natural Language Technology**

*William Meisel, PhD, CEO, TMA Associates*

**2:05 Panel: Automating Customer Service and Technical Support in Call Centers**

*Moderator: William Meisel, PhD, CEO, TMA Associates*

*Panelists:*

*Diego Ventura, CEO, noHold*

*Lisa Michaud, Director, Natural Language Processing (NLP) R&D, Aspect Software*

**2:45 Armchair Interview: Case Studies in Using Conversational Technology**

*Interviewer: William Meisel, PhD, CEO, TMA Associates*

*Ashley Blake, Director, Digital Product Management - Conversational Platform & Virtual Agent (Chatbot), USAA*

**3:20 Panel: State of the Technology: AI-driven Speech Recognition and NLP**

*Moderator: William Meisel, PhD, CEO, TMA Associates*

*Panelists:*

*Tom Hebner, Head of Innovation, Nuance Communications, Inc.*

*Saliha Azzam, PhD, Senior Director, Microsoft*

*Joseph Fung, CEO and Co-founder, Kiite*

**SEMINAR:**

## State of the Technology: Making Robots Intelligent, Cognitive and Aware

[aiworld.com/State-of-Tech](http://aiworld.com/State-of-Tech)



At the intersection of robotics and cognitive science, cognitive robotics is about doing robotics that deals with cognitive phenomena such as perception, attention, anticipation, planning, memory, learning, and reasoning. Hear how AI is influencing this emerging category and driving innovation in the enterprise. Sessions include:

- The Opportunity Landscape for Cognitive Robotics Systems
- Cognitive Robotics: Where Are We Now? Where Are We Going?
- Increasing Robotics Capabilities Using On-Device Deep Learning
- Improving Mobile Robotics' Navigation Autonomy Using Machine Learning and NLP
- Case Studies in Using Conversational Technology
- Automating Customer Service and Technical Support in Call Centers

**Wednesday, December 5, 2018** (Cambridge)

**1:30 pm The Opportunity Landscape for Cognitive Robotics Systems**

*Dan Kara, Vice President, Robotics and Intelligent Systems, WTWH Media, Executive Editor, Robot Report*

**2:00 Panel: Cognitive Robotics: Where Are We Now? Where Are We Going?**

*Moderator: Tom Ryden, Executive Director, MassRobotics*

*Panelists:*

*Aditya Kaul, Research Director, Tractica*

*Dan Kara, Executive Editor, Robot Report*

*Parna Sarkar-Basu, CEO, Brand and Buzz Marketing*

**3:00 Improving Mobile Robotics' Navigation Autonomy Using Machine Learning**

*Phil Duffy, Vice President of Innovation, Brain Corp*

**3:40 Increasing Robotics Capabilities Using On-Device Deep Learning**

*Heather Ames Versace, PhD, COO and Co-Founder, Neurala*

8:00 am Registration Open

(Commonwealth Hall)

8:20 Morning Coffee and Panel

(Commonwealth Keynote Area – Open to All)

### PANEL: The Future of AI: Views from the Frontier



**Moderator:**  
Rudina Seseri, Founder  
and Managing Partner,  
Glasswing Ventures



**Panelists:**  
Cynthia Breazeal, MIT Media  
Lab, Director Personal  
Robots Group, Associate  
Director of the Bridge for  
Strategic Initiatives, MIT  
Quest for Intelligence



Abby Everett Jaques,  
Postdoctoral Associate, MIT  
Department of Linguistics &  
Philosophy



Nicholas Roy, Professor, MIT  
CS Artificial Intelligence Lab



### 8:50 am Chair Introduction

Eliot Weinman, Founder and Conference Chair, AI World



### 9:05 KEYNOTE: Exploiting AI to Drive Business Outcomes

Dale Kutnick, Senior Vice President, Emeritus, Distinguished Analyst, Gartner, Inc.



### 9:35 The Power of Fractal Science in the IA and AI World...Dare to be Infected?

Bill Schrank, Senior Vice President, Sales, AntWorks

Sponsored by:  
**ANTWORKS**  
Reimagine. Recreate. Rethink

### 10:00 EXECUTIVE ROUNDTABLE: Enterprise AI Innovation

Technology strategy is directly tied to the mission and values of the enterprise. Successful companies are implementing AI solutions to address changing market environments, new competitive landscapes, and kindle the creative potential of their workforce. In this roundtable discussion, technology leaders from innovative companies share how their organizations are embracing AI technologies, removing barriers, and preparing employees for the future of work. The panel will explore the use of AI and automation, and its roles in transforming organizations and fostering a culture of innovation in the enterprise.



**Moderator:**  
Nick Patience, Co-Founder  
& CRO, 451 Research.



**Panelists:**  
Tolga Kurtoglu, PhD, CEO,  
PARC



Steve Grobman, Senior Vice  
President, CTO, McAfee



Shankar Srinivasan, Head of  
Engineering, Adobe Cloud  
Platform, AI and ML, Adobe



### 10:40 KEYNOTE: Practical AI Ethics, Opportunities, and Pitfalls for Organizations

David Bray, PhD, Executive Director, People-Centered Internet Coalition, Senior Fellow at the Institute for Human-Machine Cognition

11:00 Coffee Break in the Exhibit Hall with Poster Viewing

(Commonwealth Hall)

11:00 – 2:00 Concession Stand Open for Lunch in the Exhibit Hall

(Commonwealth Hall)



### 11:45 KEYNOTE: AI in Canada

Inmar Givoni, PhD, Machine Learning at University of Toronto; Autonomy Engineering Manager, Uber ATG

### 12:10 - 1:00 pm EXECUTIVE ROUNDTABLE: State of International AI Initiatives

Artificial intelligence, robotics, and automation are a truly global phenomenon. Recent government policy recommendations highlight investments in scientific research, infrastructure development, and the need to accelerate adoption across the value chain. These strategies encourage the reskilling and training of the labor force all while promoting ethics, privacy, and security. For AI to achieve country, region, and global scale, market sectors with the greatest social benefit must be identified. This panel of global executives and policymakers discusses the state of international AI initiatives and explores the impact it will have on Global 2000 corporations.



**Moderator:**  
Michael Kringsman, Industry  
Analyst and Host, CXO Talk



**Panelists:** Anthony  
Scriffignano, PhD, Senior  
Vice President & Chief Data  
Scientist, Dun & Bradstreet



Kazuo Yano, PhD, Fellow,  
Hitachi, Ltd.



Benji Sucher, VP and COO  
(Layer 6 AI), TD Bank Group



David Bray, PhD, Executive  
Director, People-Centered  
Internet Coalition, Senior  
Fellow at the Institute for  
Human-Machine Cognition



Nazli Choucri, Professor of  
Political Science, MIT

(Harborview 2)

**TRACK 6: AI in Healthcare***Track Chair: David Ledbetter, Data Scientist, Children's Hospital Los Angeles***2:00 Meshing AI and Human Cognition: Managing Risks of Ethics and Bias***John Mattison, MD, CMIO, Kaiser Permanente***2:25 Computerized, Physician Order Entry-Driven Clinical Decision Support for Laboratory Tests***Milenko Tanasijevic, MD, Vice Chair, Clinical Pathology and Quality, Brigham and Women's Hospital and Dana Farber Cancer Institute, Associate Professor of Pathology, Harvard Medical School***2:45 Avoiding Hype and False Conclusions about AI in Medicine: Key Concepts and Examples***Mike Zalis, MD, Associate Professor of Radiology, Harvard Medical School***3:05 Refreshment Break in the Exhibit Hall - Last Chance for Viewing (Commonwealth Hall)****3:40 PANEL: AI and Advanced Algorithms in Healthcare from the Investors Perspective***Moderator: Navid Alipour, Co-Founder and Managing Partner, Analytics Ventures**Panelists: Josh Kellar, PhD, Partner and Managing Director, Boston Consulting Group (BCG)  
- Dipa Talati Mehta, Managing Director, Sandbox Industries**- Jonathan Gordon, Director, NYP Ventures at New York-Presbyterian**- Bethany Hills, Chair, FDA Practice, Mintz***4:30 Improving Patient Outcomes Through AI Applications in Healthcare***Monica Wood, MD, Clinical Fellow in Radiology, Massachusetts General Hospital*

(Harborview 1)

**TRACK 7: AI in Pharma***Track Chair: Dany De Grave, Senior Director, Innovation Programs and External Networks, Sanofi***2:00 Artificial Intelligence for the Clinical Study Report***Madhavi Gidh-Jain, PhD, Senior Director, Head Medical Writing, Clinical Documentation, Sanofi***2:25 Strategy and Application of AI in Closing the Loop from Clinical Trials to Discovery Biology***Carolyn Cho, PhD, Director, Immunology Therapeutic Area Pharmacometrics Lead, Merck***2:45 Generating a Business Case for Innovation: How Can AI Enable the Future of Clinical Trials?***Basker Gummadi, Digital Innovation Lead, Bayer***3:05 Refreshment Break in the Exhibit Hall - Last Chance for Viewing (Commonwealth Hall)****3:40 PANEL: Can AI & ML Make Clinical Trials Faster, More Effective and Patient Centric?***Moderator: Sara Holoubek, CEO, Luminary Labs**Panelists: Ted Slater, Global Head, Scientific AI & Analytics, Cray**- Balazs Flink, MD, Clinical Trial Analytics Lead, R&D Business Insights and Analytics, Bristol-Myers Squibb  
- Chris Bouton, PhD, CEO, Vyasa***4:20 Exploring New Ways of Working in Regulatory: Sanofi's Proof of Concept Pilot***Dany De Grave, Senior Director, Innovation Programs and External Networks, Sanofi***4:40 The Use of AI in Real World Evidence at Sanofi***Cliona Molony, PhD, Head of Advanced Analytics, Real World Evidence & Clinical Outcomes, Sanofi*

(Amphitheater)

**TRACK 8: Emerging Technologies**

**There is no shortage of opinions on the potential for AI technologies in business. However, the current round of solutions is often viewed as expensive, proprietary, and complex to deploy and manage. When will AI solutions scale industry-wide? Is it possible to measure ROI for automation? How does AI rank against other corporate initiatives?**

*Track Chair: Jeff Orr, Conference Content Director, AI World***2:00 Don't Get Rid of Your Live Agents Quite Yet - Augmenting the Contact Center with AI**  
*Jessica Langdorf, Director, Digital Engagement Lab, Nuance Communications, Inc.***2:30 PANEL: Emerging AI Trends: Removing Bias and Explainable AI (XAI)***Moderator: Jeff Orr, Conference Content Director, AI World**Panelists: Heather Ames Versace, PhD, COO and Co-Founder, Neurala**- Raj Minhas, PhD, Vice President and Director of the Interactions and Analytics Lab (IAL), PARC**- Matthew Carrol, CEO, Immuta**- Sheldon Fernandez, CEO, DarwinAI***3:05 Refreshment Break in the Exhibit Hall - Last Chance for Viewing (Commonwealth Hall)****3:40 PANEL: Implementing Advanced AI Technologies in the Enterprise***Moderator: Sam Ransbotham, PhD, Editor, MIT Sloan Management Review**Panelists: Ernie Feiteira, Manager of Strategy & Innovation, Liberty Mutual**- Vishal Gossain, VP of Retail Modeling and Analytics, Scotiabank**- Glenn Finch, GM, Global Leader CBDS, Global Business Services, IBM Watson***4:20 PANEL: AI Hardware: Storage, Networking, and Device Revolution***Moderator: Aditya Kaul, Research Director, Tractica**Panelist: John Harrsen, Vice President, Cloud Product Management, Graphcore**- Yichen Shen, PhD, Founder & CEO, Lightelligence**- William Beaudin, Director of Engineering and Solution Architect, DDN Storage**- Andy Watson, CTO, WekaIO*

5:00 Close of AI World 2018

# SAVE THE DATE!

AI World Government Conference & Expo provides a forum to educate and inform public sector agencies (federal, state, and local governments) and its supply chain on the many benefits of deploying AI technologies. These agencies are like public and private “enterprises”, which AI World is established and known for. The government application of AI is already in its early adoption period and has been deployed in a wide variety of applications that have shown benefits. As AI continues to evolve at a rapid pace, the next generation of deployment will enable government agencies to:

- Provide better and enhanced services to its constituents
- Increase productivity and reduce costs
- Accelerate the overall digital transformation efforts underway throughout government agencies

**June 24–26, 2019**

Ronald Reagan International Trade Center

**Washington, DC**



---

## GOVERNMENT

Accelerating Innovation in the Public Sector

[AIWorldGov.com](http://AIWorldGov.com)

(Waterfront 1)

## TRACK 9: Cognitive Computing

Cognitive computing systems redefine the nature of the relationship between people and their increasingly pervasive digital environment. Who will build these new AI-on-board applications? And with the proliferation of AI technologies in the workplace, foresight must be used to understand its implications for productivity, jobs, skills and employee development, but also issues related to ethics, safety and responsibility.

Track Chair: Hadley Reynolds, Co-Founder & Managing Director, Cognitive Computing Consortium

### 2:00 PANEL: Leadership & AI

Moderator: Hadley Reynolds, Co-Founder & Managing Director, Cognitive Computing Consortium

Panelists: Leslie Owens, Executive Director, MIT CSR, MIT Sloan School of Management  
- Jana Eggers, CEO, Nara Logics  
- John Griffith, Principal Artificial Intelligence Engineer, MITRE

### 2:30 PANEL: Augmented Intelligence and Cognitive Applications for the Future of Work

Moderator: Steve Ardire, AI Startup Advisor & 'Merchant of Light'

Panelists: Lolita Taub, Principal, Backstage Capital

- Tyler Schulze, Senior Vice President, Veritone Partner Ecosystem, Veritone  
- Krishna Kallakuri, President, Founder, diwo

### 3:05 Refreshment Break in the Exhibit Hall - Last Chance for Viewing (Commonwealth Hall)

### 3:40 Selecting A Cognitive Application: Finding the right fit

- Ganesan Shankar, PhD, Associate Professor Technology, Operations, and Information Management, Babson College  
- Susan Feldman, Co-Founder, Cognitive Computing Consortium

### 4:20 PANEL: Emerging Standards for Ethics in AI – Fact or Fiction?

Moderator: Clare Gillan Huang, Technology Operations and Information Management Lecturer, Babson College

Panelists: Bill Kassler, MD, MPH, FACP, Lead Population Health Officer, IBM Watson Health  
- David Weinberger, PhD, Berkman Klein Center for Internet & Society, Harvard University

(Harborview 3)

## TRACK 10: Strategic Business Functions and AI

Enterprise organizations have a range of core business operations able to utilize AI technologies, however, this one-size-fits-all functionality can be a non-starter for some industries. Whether due to regulation, government oversight compliance, or unique requirements, these vertical markets may appear to be laggard adopters. Hear how these companies can innovate using intelligent solutions for sales, marketing, finance, engineering, HR, customer service, change management, corporate governance, and more.

Track Chair: John Desmond, Editor, AI Trends

### 2:00 The Future of AI is Now

Aaron Chaisson, Vice President, ISG, Dell EMC

### 2:30 AI-Driven Customer Engagement at Uber

Jeremy Gu, Senior Data Scientist, Uber

### 3:05 Refreshment Break in the Exhibit Hall - Last Chance for Viewing (Commonwealth Hall)

### 3:40 Becoming Information-Driven in the Cognitive Era

Scott Parker, MSc, Director, Product Marketing, Sinequa

### 4:20 The Battle for AI Talent

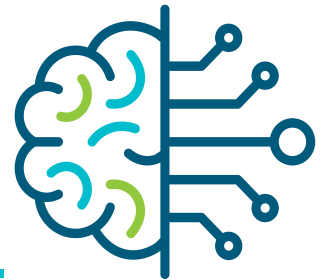
Michelle Li, Director, MIT Master of Business Analytics Program, MIT

## 5:00 Close of AI World 2018

AI World program subject to change.

# Is AI just hype?

No, it's real, and Nuance AI is fueling millions of customer interactions every day.



Many companies talk-the-talk about AI, leaving behind a cloud of confusion or, worse yet, over-promising and under-delivering. **At Nuance, we've been mastering AI for over 20 years.**

We understand how commercial AI works for customer engagement and how it can transform the way you deliver a customer-centric experience while keeping costs in line.

## Predict / Converse / Analyze

AI for customer engagement lets you **predict, understand, deliver, learn and improve** the experience with every interaction. Nuance AI-powered customer engagement delivers –

- Proactive outreach
- Conversation routing
- Authentication
- Personalization
- Sentiment analysis
- Intelligent escalation
- Customized content
- Analysis/optimization

**Better results. Lower costs. Visit us at booth 229 or at [nuance.com/ai](http://nuance.com/ai) and let us show you how.**

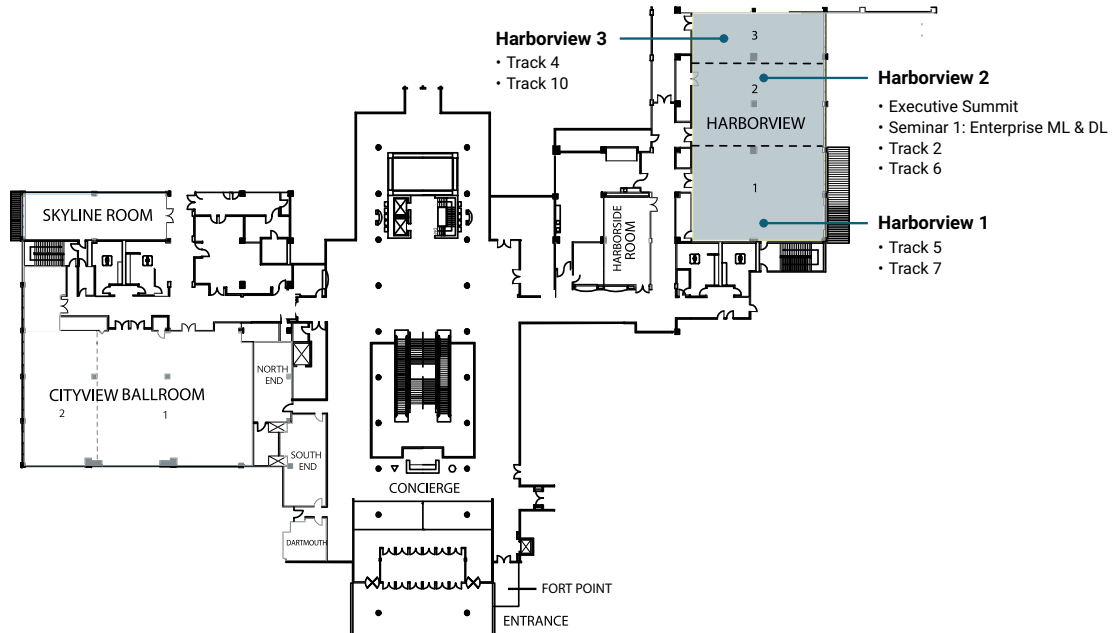


# Venue Floor Plan

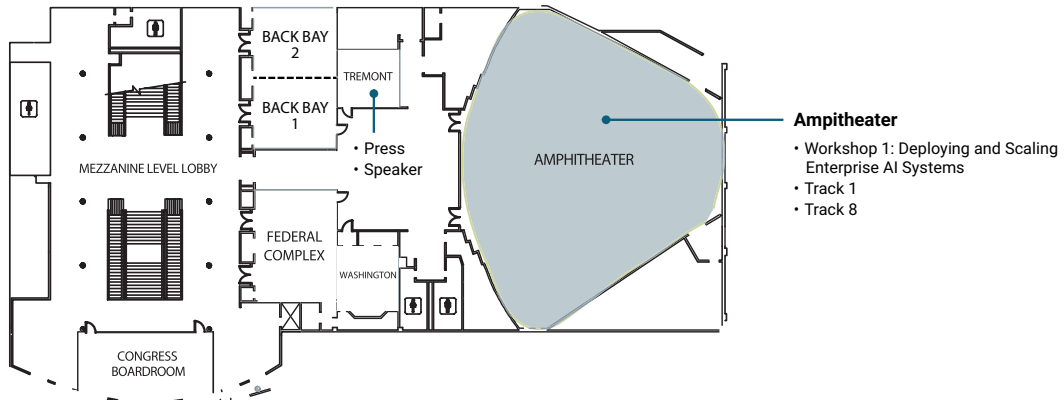
= OPEN TO ALL WITH EXPO PASS

= CONFERENCE PASS ONLY

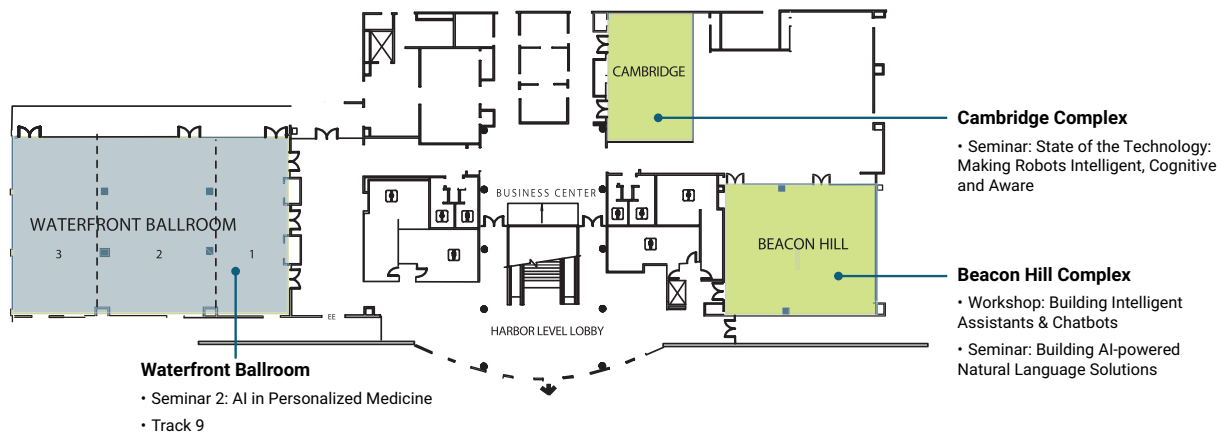
## Plaza Level – Top Level



## Mezzanine Level – Second Level



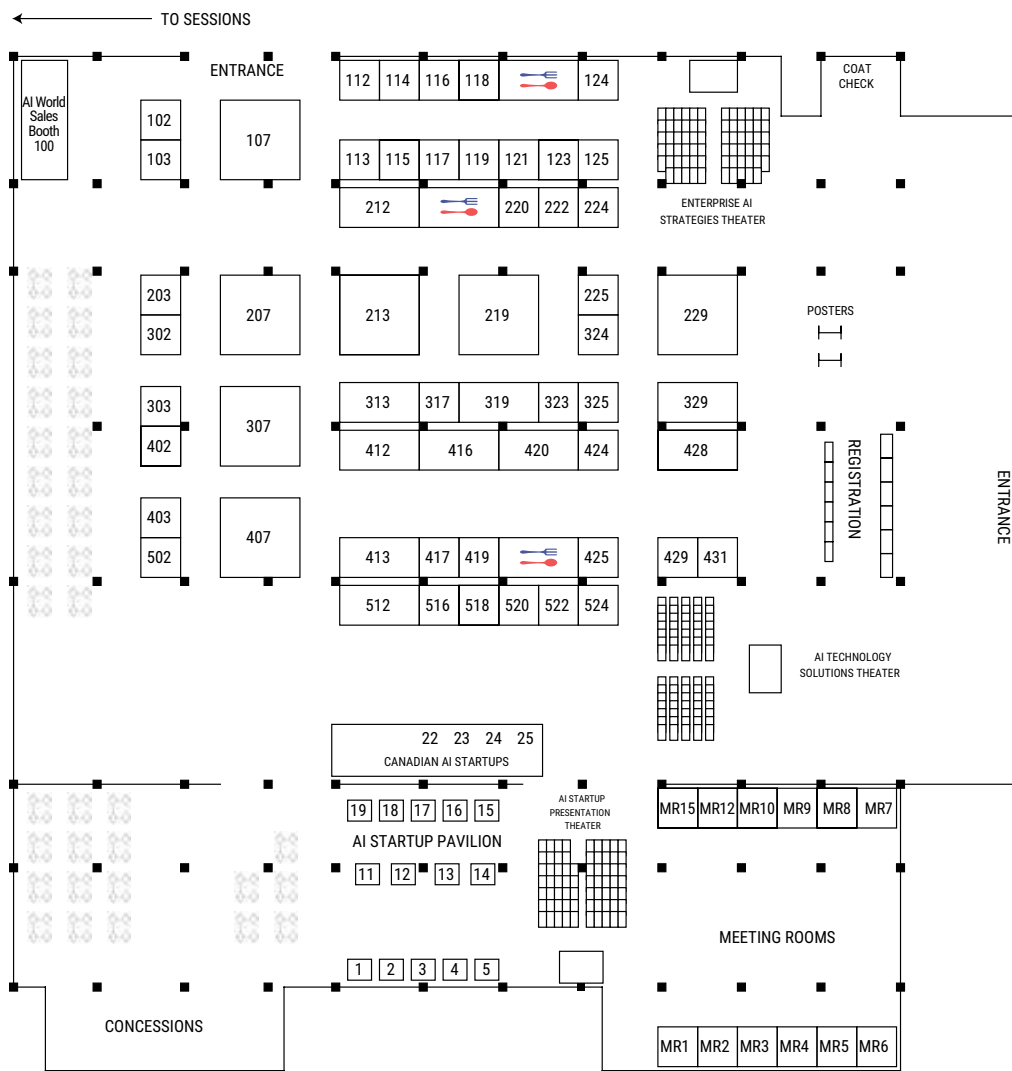
## Harbor Level – Bottom Level



### Commonwealth Hall

Keynote • Expo Hall • Monday Round Table Discussions  
1-on-1 Networking • Registration • Coat Check • Concessions • AI World Sales Office



Company	Booth
Accenture	219
AI World Conference & Expo Publications	
Table	403
AI World Sales	100
Alegion	412
Analytics Week	117
AntWorks	407
Aventior	5
Berg LLC	225
Blackstraw	15
Bragi	16
CCC Information Services	118
CII Publishing	416
CloudFactory Ltd	220
Cloudian	431
Cobalt Speech & Language	317
Consulate General of Canada	22-25
Darktrace	428
Dataiku	502
DataRobot	313
DDN Storage	413
deepsense.ai	114
deFacto Global Inc	425
Dell EMC	207
Directly	520
Diwo	307
Dynamicly	24
eXalt Solutions	102
Expert System	112
FlamingoAI	18
H2O.ai	324
Hendrix.ai by Testfire Labs	25
Hewlett Packard Enterprise	319
IBM Aspera	203
IBM Watson	213
iMerit	419
Immuta	212
Knowledgent	429
Lucid	14
Luminoso	124
Lux Research	119
Mintz	402
NCI	103
NetApp	424
Nuance Communications Inc	229
Object Mgmt Grp	516
Oracle	125
Protabit LLC	224
Pure Storage Inc	512
Qumulo Inc	12
RAID Inc	524
Resolute.AI	19
SFL Scientific LLC	323
Sinequa Corp	113
Skymind	17
SkyScale	325
Speciate AI	11
Splunk Inc	303
TogetherData	417
UiPath	302
Univa Corp	329
Veritone Inc	107
Vetterly	115
VYASA Analytics	222
WorkFusion	420
Weka.IO	13
XPRIZE	116

**Tuesday**

10:20am - 6:30pm  
11:00am - 2:00pm

Exhibit Hall Open  
Concession Stand Open

**Dedicated Viewing:**

10:20 - 10:50am  
3:00 - 3:45pm  
5:30 - 6:30pm

Grand Opening Coffee Break  
Refreshment Break  
Networking Reception

**Wednesday**

11:00am - 3:40pm  
11:00am - 2:00pm

Exhibit Hall Open  
Concession Stand Open

**Dedicated Viewing:**

11:00 - 11:45am  
3:05 - 3:40pm

Coffee Break  
Refreshment Break – Last Chance for Viewing

\*\*Exhibit hours are subject to change.\*\*

# Product Directory

This listing will help you identify and locate relevant products and services in your area of scientific interest within the exhibit hall. Please refer to the Sponsor and Exhibitor listings on pages 28-35 for a brief description for each company.

<b>Category/Company</b>	<b>Booth</b>	<b>Category/Company</b>	<b>Booth</b>	<b>Category/Company</b>	<b>Booth</b>
<b>Artificial Intelligence</b>		<b>Big Data</b>		Blackstraw AI..... 15	
Accenture.....	219	Aspera, an IBM Company .....	203	iMerit .....	419
AntWorks Pte. Ltd.....	407	Cloudian .....	431	<b>Consulting</b>	
BERG Health .....	225	Dell.....	207	Accenture.....	219
Blackstraw AI.....	15	Knowledgegent.....	429	SFL Scientific.....	323
Bragi GmbH .....	16	Lucd.....	14	<b>CRM – Customer Support/ Customer Experience</b>	
CCC Information Services .....	118	Luminoso .....	124	Directly.....	520
Consulate General of Canada .....	22-25	NCI.....	103	Luminoso .....	124
Darktrace.....	428	NetApp.....	424	<b>Cyber Security</b>	
DataRobot.....	313	Qumulo, Inc.....	12	Darktrace.....	428
DDN Storage.....	413	Resolute Innovation .....	19	<b>Data Analytics</b>	
deFacto Global.....	425	Skymind.....	17	Dataiku.....	502
Dell.....	207	Speciate AI.....	11	DataRobot.....	313
diwo.....	507	TogetherData.....	417	DDN Storage.....	413
eXalt Solutions, Inc.....	102	<b>Bots/ Intelligent Assistants</b>		Knowledgegent.....	429
Expert System.....	112	Directly.....	520	Resolute Innovation .....	19
FlamingoAI.....	18	Dynamicly.....	24	Vyasa Analytics LLC.....	222
H2O.ai.....	324	eXalt Solutions, Inc.....	102	<b>Data Labeling</b>	
Hendrix.ai by Testfire Labs .....	25	FlamingoAI.....	18	iMerit .....	419
Hewlett Packard Enterprise.....	319	Hendrix.ai by Testfire Labs .....	25	<b>Data Management</b>	
IBM Watson .....	213	Nuance .....	229	Immuta .....	212
Immuta .....	212	<b>Business Intelligence</b>		<b>Data Prep &amp; Validation</b>	
Knowledgegent.....	429	Consulate General of Canada .....	22-25	Alegion.....	412
Lucd.....	14	Speciate AI.....	11	Aventior.....	5
Luminoso .....	124	<b>Business Process Outsourcing</b>		CloudFactory Ltd .....	220
NCI.....	103	CloudFactory .....	220	Dataiku.....	502
NetApp.....	424	<b>Call Center</b>		iMerit .....	419
Nuance .....	229	Directly.....	520	<b>Data Science</b>	
Oracle Corporation .....	125	<b>Chipsets/ Edge Computing</b>		Dataiku.....	502
Protabit LLC.....	224	deFacto Global .....	425	H2O.ai.....	324
Pure Storage.....	512	<b>Cloud Computing</b>		TogetherData.....	417
RAID Incorporated .....	524	Univa .....	329	<b>Deep Learning</b>	
Resolute Innovation .....	19	<b>Cloud Storage &amp; Processing</b>		DDN Storage.....	413
SFL Scientific.....	323	Aspera, an IBM Company .....	203	diwo.....	507
Sinequa.....	113	Cloudian .....	431	Hewlett Packard Enterprise.....	319
Skymind.....	17	NetApp.....	424	Pure Storage.....	512
Speciate AI .....	11	Oracle Corporation .....	125	SFL Scientific.....	323
Splunk Inc.....	303	SkyScale .....	325	SkyScale.....	325
TogetherData.....	417	<b>Cognitive Computing</b>		Vyasa Analytics LLC.....	222
UiPath .....	302	diwo.....	507	WekaIO .....	13
VERITONE .....	107	IBM Watson .....	213	<b>Digital Transformation</b>	
Vyasa Analytics LLC.....	222	Sinequa.....	113	Accenture.....	219
WekaIO .....	13	<b>Computer Vision</b>		eXalt Solutions, Inc.....	102
WorkFusion.....	420	Alegion.....	412		
<b>Automotive/ Self-driving Vehicles and Fleets</b>					
CCC Information Services .....	118				
<b>Autonomous Systems</b>					
Oracle Corporation .....	125				

# Product Directory

<b>Category/Company</b>	<b>Booth</b>	<b>Category/Company</b>	<b>Booth</b>	<b>Category/Company</b>	<b>Booth</b>				
<b>eCommerce</b>									
Dynamicy.....	24	<b>Industrial IoT (IIoT)</b>							
<b>Emotion Recognition</b>									
Cobalt Speech and Language.....	317	Bragi GmbH.....	16	<b>Personalized Medicine &amp; Digital Health</b>					
VERITONE.....	107	Dell.....	207	BERG Health.....	225				
<b>File and Object Storage</b>									
Cloudian.....	431	Splunk Inc.....	303	<b>Pharma</b>					
<b>Government</b>									
NCI.....	103	<b>Legal</b>							
<b>Hardware</b>									
Oracle Corporation.....	125	Mintz.....	402	<b>Research</b>					
<b>Healthcare</b>									
Dynamicy.....	24	<b>Machine Learning</b>							
<b>High-Performance Computing</b>									
Cloudian.....	431	AntWorks Pte. Ltd.....	407	<b>Risk / Regulatory Compliance</b>					
Hewlett Packard Enterprise.....	319	Bragi GmbH.....	16	Immuta.....	212				
Qumulo, Inc.....	12	CCC Information Services.....	118	<b>RPA / Intelligent Automation</b>					
RAID Incorporated.....	524	Cobalt Speech and Language.....	317	AntWorks Pte. Ltd.....	407				
SkyScale.....	325	DataRobot.....	313	Blackstraw AI.....	15				
Univa.....	329	Expert System.....	112	SkyMind.....	17				
WekaIO.....	13	FlamingoAI.....	18	WorkFusion.....	420				
<b>HR/ Recruiting/ On-boarding</b>									
Vettery.....	115	H2O.ai.....	324	<b>Security/ Fraud Detection</b>					
<b>Image &amp; Object Recognition</b>									
Aventior.....	5	IBM Watson.....	213	Darktrace.....	428				
CloudFactory Ltd.....	220	Lucid.....	14	Nuance.....	229				
VERITONE.....	107	Pure Storage.....	512	<b>Software</b>					
<b>Natural Language Processing (NLP)</b>									
<b>Speech Recognition</b>									
Alegion.....	412	Qumulo, Inc.....	12	Aspera, an IBM Company.....	203				
Expert System.....	112	Sinequa.....	113	<b>Systems Integrators</b>					
Hendrix.ai by Testfire Labs.....	25	Splunk Inc.....	303	deFacto Global.....	425				
iMerit.....	419	Univa.....	329	<b>Image &amp; Object Recognition</b>					
Luminoso.....	124	WorkFusion.....	420	Aventior.....	5				



**DDN MAKES AI-POWERED INNOVATION EASY**

Extract value from your data faster and scale your Deep Learning environment without compromise

**DDN<sup>®</sup> STORAGE**

**Booth #413**

# Sponsor and Exhibitor Descriptions



**219**

1160 West Swedesford Road  
Berwyn, PA 19312  
www.accenture.com

Accenture solves our clients' toughest challenges by providing unmatched services in strategy, consulting, digital, technology and operations. We partner with more than three-quarters of the Fortune Global 500, driving innovation to improve the way the world works and lives. With expertise across more than 40 industries and all business functions, we deliver transformational outcomes for a demanding new digital world.



**412**

501 Pedernales Street, Suite 1a  
Austin, TX 78702  
512.818.1176 | alegion.com

Alegion provides ground truth training data for CV and other machine learning initiatives. We combine an AI-driven data and task management platform with a nearly million-member pool of trained data specialists to deliver high-quality datasets. With full project lifecycle capabilities, we also can offload model testing and post-production exception handling.



59 Strafford Road  
Westwood, MA 02090  
978.310.1482 | analyticsweek.com

AnalyticsWeek is World's Largest Data Analytics CLUB, created to help tomorrow's leaders understand expanding World of data science today. AnalyticsWeek creates high quality content, networks and events to help with expanding data science talent and development needs.



**407**

Reimagine . Recreate . Rethink

Level 39, #10 Marina Bay Financial Centre, Tower 2  
Singapore 018983 India  
www.ant.works

Harnessing the power of AI, Machine Learning and RPA technologies, AntWorks™ is a tour de force in smart business solutions — fashioning the AI framework for a new breed of enterprises. Our Integrated Intelligent Automation Platform ingest and process structured and unstructured data — creating new, cost-effective business models for enterprises everywhere.



**203**

an IBM® company

5900 Hollis Street, Suite E  
Emeryville, CA 94608  
510.849.2386 | www.asperasoft.com

Whether your AI is deployed on premises or in the cloud, you need to move the data from where it lives to where the AI system can process it. IBM Aspera's high-speed transfer technology enables near-real time AI workflows through the delivery of data across any distance at maximum speed.



**5**

125 Cambridgepark Drive, Suite 301  
Cambridge, MA 02140  
617.221.5900 | www.aventior.com

Aventior uses AI and CV to process satellite images (and real-time videos) for detecting and classifying objects of interest that helps organizations take better and more accurate decisions faster. Applications range from asset tracking, protection of EEZ, land-use management, urban planning and construction, waste management, environmental protection, and agriculture.



**225**

500 Old Connecticut Path  
Framingham, MA 01701  
508.397.0625 | www.berghealth.com

BERG LLC is a clinical-stage, artificial intelligence-powered biotech leveraging its proprietary platform, Interrogative Biology®, to map disease and revolutionize treatments across oncology, neurology and rare diseases.



**15**

11403 Minaret Drive  
Tampa, FL 33626  
813.508.1329 | www.blackstraw.ai

We are a group of experts that have led several real world AI implementations. Through our learnings on trickiest of implementations we at Blackstraw have built a Data Engineering Platform and AI solutions to tackle complex use cases across various industries.



**16**

Sendlinger Straße 7, 2.0G  
Munich, Bayern 80331 Germany  
+49 89 124 14 97 – 15 | www.bragi.net


Bragi Intelligent Edge brings the power of machine learning and data-centric algorithms to tiny autonomous embedded systems and makes small devices intelligent, configurable and accessible. Bragi enables AI everywhere and IoT to scale and helps companies design, develop and create solutions that meet their specific needs regardless the industry.



**431**

177 Bovey Road, Suite 450  
San Mateo, CA 94402  
www.cloudian.com

Cloudian® is a file and object storage company specializing in S3 API storage systems. Cloudian introduced its object-based platform, HyperStore®, in 2011. Cloudian products are offered by partners including Amazon, Lenovo, Cisco, Hewlett Packard Enterprise, and QCT, and by reseller partners worldwide.



**220**

201 West Main Street, Suite 101  
Durham, NC 27701  
888.809.0229 | www.cloudfactory.com

CloudFactory powers quality training data at scale. Its managed workforce has the expertise and use case agility to process pipelines of big data like a trained internal team. CloudFactory's clients include 11 of the world's autonomous vehicle companies, Microsoft, Drive.ai, Expensify, Ibotta, and others. To learn more, visit www.cloudfactory.com.



**317**

29 Scribner Road  
Tyngsborough, MA 01879  
978.399.9124 | www.cobaltspeech.com

Cobalt is a leading provider of custom speech and language solutions for small and large businesses. We offer speech recognition, synthesis, and analysis of both text and audio, as well as complete conversational speech interfaces for applications and appliances. We apply our team's experience to your company's objectives.



**22-25**

Consulate General of Canada in Boston  
Consulat général du Canada à Boston

Three Copley Place, Suite 400  
Boston 02116  
617.247.5100


The Consulate General of Canada in Boston drives value and innovation in New England by connecting businesses to Canadian technology, intelligence, ideas, partnerships, suppliers, and talent. With over 500 artificial intelligence companies, AI is one of Canada's fastest growing sectors, boasting world-leading expertise.



**118**

Merchandise Mart Plaza, Suite 900  
Chicago, IL 60654  
800.621.8070 | www.cccis.com

CCC provides cross-industry vehicle lifecycle solutions to a vibrant network of 350+ insurance companies, 24,000+ repair facilities, auto manufacturers, hundreds of parts suppliers, and dozens of third-party data and service providers. CCC processes over 24M annual estimates and 16M annual repairs in the U.S. and also provides access to car-related services for millions of consumers via carwise.com.



**416**

250 First Avenue, Suite 300  
Needham, MA 02494  
781.972.5400 | www.healthtech.com

Cambridge Innovation Publishing, a division of Cambridge Innovation Institute, provides the life science and technology communities with business critical intelligence through research reports and digital news, helping executive decision makers to gain competitive advantage and make strategic decisions. Our portfolio consists of Insight Pharma Reports' vast research reports collection and four niche digital subscription products: AI Trends, Bio-IT World, Clinical Informatics News, and Diagnostics World.



**428**

437 Madison Avenue  
New York, NY 10022  
646.964.4842 | www.darktrace.com

Founded in 2013 by mathematicians from the University of Cambridge and government cyber intelligence experts in the US and the UK, Darktrace is recognized today as the world's leading AI company for cyber security.

# Sponsor and Exhibitor Descriptions



26 Broadway, 22nd Floor  
New York, NY 10004  
646.568.7477 | [www.dataiku.com](http://www.dataiku.com)

Dataiku DSS is the collaborative data science software platform for teams of data scientists, data analysts, and engineers to explore, prototype, build, and deliver their own data products more efficiently.



1 International Place, 5th Floor  
Boston, MA 02110  
617.765.4500 | [www.datarobot.com](http://www.datarobot.com)

DataRobot helps enterprises embrace artificial intelligence (AI). Incorporating hundreds of the most powerful open source machine learning algorithms, DataRobot's platform automates, trains, and evaluates models in parallel, delivering AI applications at scale. DataRobot provides the fastest path to AI success for organizations of all sizes. Learn more at [datarobot.com](http://datarobot.com).



2100 Geng Road, Suite 210  
Palo Alto, CA 94303

[contact@deepsense.ai](mailto:contact@deepsense.ai) | [deepsense.ai](http://deepsense.ai)

deepsense.ai is a data science company, which helps organizations gain competitive advantage by providing them with AI-based end-to-end solutions, with the focus on computer vision, predictive analytics and natural language processing. The company delivers machine learning and deep learning training programs to support enterprises in building AI capabilities in-house.

## deFactoGlobal

502

333 Broadway, Suite 380  
Troy, NY 12180  
888.894.3031x230 | [www.deFactoGlobal.com](http://www.deFactoGlobal.com)

deFacto Global offers intelligence solutions that drive competitive advantage. Offerings include deFacto Planning, an AI-enhanced corporate planning product, and Intelligize.AI, an AI consulting and development practice. deFacto Global is also launching a national AI Center of Excellence. A long-time Microsoft Gold and Inner Circle AI-Partner, customers include mid-market to Fortune 500 companies.



9351 Deering Avenue  
Chatsworth, CA 91311  
818.700.4000 | [ddn.com](http://ddn.com)

DDN Storage delivers systems for demanding AI and modern analytics workflows, supporting smaller initiatives and capable of scaling to the very largest. With deep experience in implementing high-performance solutions for demanding data-at-scale organizations, DDN has the platforms and technical proficiency to help you fast track your AI/DL projects and applications.

114

425



1 Dell Way  
Round Rock, TX 78664  
512.318.6391 | [www.DellEMC.com/Precision](http://www.DellEMC.com/Precision)

Dell EMC brings innovation to people and organizations so they can transform and thrive in the digital economy. We power digital transformation by delivering best-in-class technology for applications, data, infrastructure and security from the edge to the core to the cloud.

207



333 Bryant Street, Suite 250  
San Francisco, CA 94107  
800.787.3176 | [www.directly.com](http://www.directly.com)

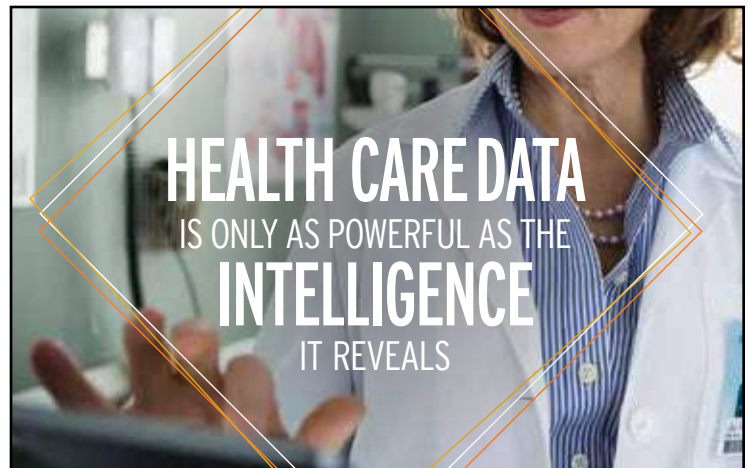
Directly is a leader in CX Automation, helping companies deliver better customer service while creating economic opportunity in the AI economy. Companies like Airbnb, Microsoft and Samsung use Directly to put expert users at the heart of their AI, resolving up to 40% of support inquiries at 60-80% less cost.

520

**LEGAL,  
ETHICAL,  
COMPLIANT  
AI/ML.**



[www.immuta.com](http://www.immuta.com) @ImmutaData



**HEALTH CARE DATA  
IS ONLY AS POWERFUL AS THE  
INTELLIGENCE  
IT REVEALS**

At Optum, data with expert insights is at the forefront of everything we do. We are partnering across the health system to tackle the biggest challenges in health care. And with **OPTUM IQ**, our unique combination of data, analytics and health care expertise, we infuse intelligent solutions into the flow of health care to help build a healthier world. Learn more at [optum.com/iq](http://optum.com/iq)



Data and Analytics | Pharmacy Care Services | Population Health Management  
Health Care Delivery | Health Care Operations

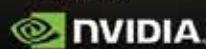
# Real-World AI is Here.



From



Powered by



# Sponsor and Exhibitor Descriptions



22260 Haggerty Road, Suite 250  
Northville, MI 48167  
getdiwo.com

diwo is a unique cognitive decision-making platform developed by Loven Systems that reveals hidden business opportunities in real-time and empowers business users to act on them. Not just a continuous business optimization engine, diwo guides decision-makers intuitively through natural conversation to explore flexible, quantified strategies to confidently act in time.

307



2307 Leghorn Street  
Mountain View, CA 94043  
650.227.4572 | H2O.ai

H2O.ai is the leader in AI with its visionary open source platform, H2O. Its mission is to democratize AI starts by making training and interface faster, easier, and safer. With Auto Feature Engineering, AutoViz and Machine Learning Interpretability, H2O.ai's Driverless AI is building trust in AI for all.

324



14435C Big Basin Way, #256  
Saratoga, CA 95070  
650.777.7857 | imerit.net

iMerit provides high-volume data labeling services using an in-house workforce of 1,500+ full time data technicians. We specialize in text, audio, and image/video data with over 30 million data points labeled to date. Our clients partner with us for our balance of scalability, consultation, data security, competitive pricing, and quality.

419



**Dynamicly**

1255 Peel Street, Suite #550  
Montreal, QC H3B 2T9 Canada  
833.827.2428 | dynamicly.com

Dynamicly builds AI virtual assistants for websites/apps – think of Siri or Alexa for your website/app, but tailored to your brand. We create dynamic, engaging, and “intelligent” experiences by seamlessly combining natural conversation with powerful visuals. We work with clients across multiple industries, including pharma/biotech, healthcare, retail, and commerce.

24



#301, 10359 104 Street NW  
Edmonton, AB T5J 1B9 Canada  
780.809.0888 | hendrix.ai

Testfire Labs' flagship product is Hendrix.ai, an AI-assistant that attends business meetings either by phone, application, or through any audio conferencing platform, to transcribe meeting summaries and action items, audit meeting history, and drop it all into a simple, searchable dashboard, for unprecedented organization and productivity insights across an enterprise.

25



8400 Baltimore Avenue, Suite 100  
College Park, MD 20740  
800.655.0982 | www.immuta.com

Immuta is the fastest way for AI-driven enterprises to accelerate the development and control of machine learning and advanced analytics. Immuta's data management platform provides data scientists with rapid, personalized data access to dramatically improve the creation, deployment and auditability of ML and AI. For more information, visit www.immuta.com.

212



50 Milk Street, 17th Floor  
Boston, MA 02110  
www.exaltsolutions.com

eXalt's mission is to enable companies to sell more, more profitably. Our patented Knowledge Work as a Service (KWaaS) cloud platform gives B2B enterprises unlimited scale with digital knowledge workers making processes digital end-to-end without human touch.

102



3000 Hanover Street  
Palo Alto, CA 94304  
650.687.5817 | www.hpe.com

Only HPE is delivering on a roadmap to create more powerful, flexible, secure, and efficient computing and data architectures, powering AI from edge to cloud to core.

319



31 Hayward Street, Suite E  
Franklin, MA 02038  
866.637.9049 | www.interactions.com

Interactions provides Intelligent Virtual Assistants that combine AI & human understanding to enable businesses & consumers to engage in productive conversations. With flexible products & solutions for unified, multichannel customer care, Interactions is delivering significant cost savings & unprecedented customer experience for some of the largest brands in the world.



6110 Executive Boulevard Suite 690  
Rockville, MD 20852  
240.777.1800 | www.expertsystem.com

Expert System is a leading provider of cognitive computing and text analytics software based on Cogito. Expert System delivers solutions for a vast range of business requirements such as semantic search, open source intelligence, text analytics, natural language processing and development and management of taxonomies and ontologies.

112



88 University Place  
New York, NY 10003  
ibm.com/watson

Watson represent a new era of cognitive computing where systems can think like humans. Watson's cognitive technologies can understand all forms of data, interact naturally with people, and learn and reason, at scale. Gain insights from unstructured content like text, images and videos. With our suite of cognitive APIs and solutions, clients are already achieving business outcomes from improving customer engagement and scaling expertise, to drive innovation and growth.

213



780 East Main Street  
Branford, CT 06405  
203.606.3000 | www.inveinai.com

InveniAI, a wholly owned subsidiary of BioXcel Corporation, has pioneered the application of artificial intelligence (AI) and machine learning (ML) to transform innovation across biopharma and other industries. InveniAI is leveraging AI and ML to harness terabytes of disparate data sets to recognize complex patterns and unlock value. InveniAI's domain expertise spans AI-based innovation monitoring to AI-based drug discovery, already proven with numerous industry collaborations such as Alexion, Centrexion, Takeda, and Axcella among others.

18



300 Park Avenue, 12th Floor  
New York, NY 10022  
855.282.9272 | flamingo.ai

Flamingo AI is an enterprise SaaS company in the field of Conversational Commerce providing Cognitive Virtual Assistant solutions & Knowledge Engines that automate online customer sales and service experiences. Our AI Virtual Assistants can take customers from Online Research/browse through to Quote, Application, Bind, On-board, Claims and Service.



5 Speen Street  
Framingham, MA 01701  
508.872.8200 | www.idc.com/itexecutive

IDC is the most trusted IT research advisory firm in the market. IDC's IT Executive Programs support businesses in their Digital Transformation (DX). Our IT advisory services not only advise on the technologies underpinning DX, but also on effectively leading and executing DX initiatives across both IT and the line of business.



3 Mountainview Road, 2nd Floor  
Warren, NJ 07059  
908.542.4200 | www.knowledgent.com

Knowledgegent is a data intelligence company that enables enterprises to become digital and intelligent by innovating in and through data for the healthcare and financial services industries. For more information, visit knowledgent.com.

429

# World's First "Self-Driving" Database

The logo for Oracle Autonomous Database is a red outline of a cloud shape. Inside the cloud, the words "Oracle Autonomous Database" are written in a bold, red, sans-serif font, stacked vertically.

**Oracle  
Autonomous  
Database**

**Protects your Data from Cyber Attacks !  
Automatically Updates Security while Running**

**ORACLE®**

[oracle.com/selfdrivingdb](https://oracle.com/selfdrivingdb)



# Sponsor and Exhibitor Descriptions



424 Church Street, Suite 2000  
Nashville, TN 37027  
812.229.1453 | www.lucid.ai

Lucid develops pioneering capabilities in Enterprise AI, Big Data, Data Fusion and Machine Learning. We understand the need to capture, secure and harness data for a competitive advantage. Lucid leverages these capabilities with existing assets to turn your data into empowering enterprise AI outcomes.

14



32 Vassar Street  
Cambridge, MA 02139  
cap.csail.mit.edu

CSAIL Alliances is the broad umbrella that connects organizations to MIT's Computer Science and Artificial Intelligence Laboratory through a variety of engagement programs. The best path depends on your priorities. Focus points include: research, new technology, talent acquisition or development, startups and more.



One Main Street  
Cambridge, MA 02139  
855.259.1782 | sloanreview.mit.edu

MIT Sloan Management Review leads the discourse among academic researchers, business executives and other influential thought leaders about advances in management practice that are transforming how people lead and innovate. MIT SMR disseminates new management research and ideas so that thoughtful executives can capitalize on the opportunities generated by rapid organizational and technological change.

124



675 Massachusetts Avenue, Suite 6  
Cambridge, MA 02139  
617.682.9056 | Luminoso.com

Luminoso's customer analytics solution for global B2C enterprises understands and quantifies customer feedback at scale, so you can improve the customer experience. Unlike other analytics technologies, Luminoso can understand high volumes of constantly arriving customer feedback within minutes, in any of 13 languages.



HQ: 100 Franklin Street Boston, MA 02110  
Offices in Boston, New York, Amsterdam, Tokyo, and Singapore  
617.502.5300 | www.luxresearchinc.com

Lux Research is a leading provider of tech-enabled research and advisory solutions, helping clients drive growth through technology innovation. A pioneer in the research industry, Lux uniquely combines technical expertise and business insights with a proprietary intelligence platform, using advanced analytics and data science to surface true leading indicators. With quality data derived from primary research, fact-based analysis, and opinions that challenge traditional thinking, Lux clients are empowered to make more informed decisions today to ensure future success.

119



11730 Plaza America Drive  
Reston, VA 20190  
703.707.6900 | www.nciinc.com

NCI is a leading provider of enterprise solutions and services to the U.S. government. As an innovator of artificial intelligence our purpose is to bring commercial innovation to missions of national importance. At NCI we are empowering the workforce by using best in class AI solutions to scale humans.

103



1395 Crossman Avenue  
Sunnyvale, CA 94089  
www.netapp.com

NetApp is the data authority for hybrid cloud. We provide a full range of hybrid cloud data services that simplify management of applications and data across cloud and on-premises environments to accelerate digital transformation. For more information, visit www.netapp.com. #DataDriven

424



Worldwide Headquarters  
1 Wayside Road  
Burlington, MA 01803  
781.565.5000 | www.nuance.com

Nuance Communications, Inc. is the pioneer and leader in conversational AI. The company delivers solutions that can understand, analyze and respond to human language to increase productivity and amplify human intelligence. With decades of domain expertise, Nuance works with thousands of organizations to create stronger relationships and better customer experiences.

229



109 Highland Avenue, 3rd Floor  
Needham, MA 02494 USA  
781.444.0404 | www.omg.org

The Object Management Group® (OMG®) is an international, open membership, not-for-profit technology standards consortium. Founded in 1989, OMG standards are driven by vendors, end-users, academic institutions and government agencies. OMG Task Forces develop enterprise integration standards for a wide range of technologies and an even wider range of industries.



11000 Optum Circle  
Eden Prairie, MN 55344  
1.800.765.6619 | www.optum.com

Optum is a leading health services and innovation company dedicated to helping make the health system work better for everyone. With more than 133,000 people collaborating worldwide, Optum combines technology, data and expertise to improve the delivery, quality and efficiency of health care.



125

100 Oracle Parkway  
Redwood City, CA 94065  
650.506.7000 | www.oracle.com

Oracle has embedded innovative technologies in every aspect of our cloud with artificial intelligence and Oracle Autonomous Database, the industry's only self-driving, self-securing, and self-repairing database. Oracle is the #1 provider of business software, with a broad portfolio of solutions for companies of all sizes.



Am Klopferspitz 19a  
Martinsried 82152 Germany  
+49 89.016760 | www.origenis.de

Origenis is a fully integrated drug discovery company using proprietary AI applications which drive everything from target identification, competitor analysis, multiparametric drug design, planning and execution of chemical synthesis, data acquisition and feedback driven optimization to patent applications for building a competitive drug development pipeline in the neuroinflammation and ophthalmology.



1 Rogers Street  
Cambridge, MA 02142  
617.374.9600 | www.pega.com

Pegasystems Inc. is the leader in software for customer engagement and operational excellence. Pega's adaptive, cloud-architected software empowers people to rapidly deploy and easily extend and change applications to meet strategic business needs. Pega has delivered award-winning capabilities digital process automation (DPA), powered by advanced artificial intelligence and robotic automation.

675 Massachusetts Avenue, Suite 6  
Cambridge, MA 02139  
617.682.9056 | Luminoso.com

Luminoso.com

Luminoso's customer analytics solution for global B2C enterprises understands and quantifies customer feedback at scale, so you can improve the customer experience. Unlike other analytics technologies, Luminoso can understand high volumes of constantly arriving customer feedback within minutes, in any of 13 languages.

HQ: 100 Franklin Street Boston, MA 02110  
Offices in Boston, New York, Amsterdam, Tokyo, and Singapore  
617.502.5300 | www.luxresearchinc.com

Lux Research is a leading provider of tech-enabled research and advisory solutions, helping clients drive growth through technology innovation. A pioneer in the research industry, Lux uniquely combines technical expertise and business insights with a proprietary intelligence platform, using advanced analytics and data science to surface true leading indicators. With quality data derived from primary research, fact-based analysis, and opinions that challenge traditional thinking, Lux clients are empowered to make more informed decisions today to ensure future success.



67 Mount Vernon Street  
Boston, MA 02108  
617.286.6589 | Dukakis.org

Michael Dukakis Institute for Leadership and Innovation (MDI) was co-founded by Governor Michael Dukakis and Nguyen Anh Tuan. MDI generates important initiatives in AI in concert with the AI World Society 7-Layer Model, and AI-Government, World Leader in AI World Society Award. MDI is the publisher of Shaping Futures magazine. MDI Innovators are prominent leaders and scholars with Harvard, MIT, Brown, Tufts, Google, and The New York Times.



One Financial Center  
Boston, MA 02111  
617.542.6000 | www.mintz.com

Mintz is an Am Law 100 firm with 500 attorneys serving clients worldwide. We have a strong technology sector focus and represent innovative companies throughout the business lifecycle – providing legal services for start-ups, helping growing companies access financing, and helping clients achieve regulatory compliance and protect their IP assets.

402

# Sponsor and Exhibitor Descriptions



1010 Union Street, Suite 110  
Pasadena, CA 91106  
626.844.7348 | www.protabit.com  
Protabit is a protein engineering company that uses AI and machine learning capabilities to discover beneficial sequence mutations for therapeutic proteins. We also develop and maintain the ProtaBank protein sequence mutation database. This database collects and organizes published protein sequence mutation data found in the scientific literature (protabank.org).

224



650 Castro Street, #400  
Mountain View, CA 94041  
417.766.1216 | www.purestorage.com  
Pure Storage helps customers build a better world with data through the industry's first purpose-built AI data platform. Data-rich applications like deep learning, machine learning and data analytics are accelerated by Pure's massively parallel architecture - delivering unprecedented performance (10x) and time-to-insight at scale.

512



1501 4th Avenue, #1600  
Seattle, WA 98101  
www.qumulo.com  
Qumulo is the leader in universal-scale file storage. Qumulo File Fabric (QF2) gives data-intensive businesses the freedom to store, manage and access file-based data in the data center and on the cloud, at petabyte and global scale.

12



US: Boston & Washington DC  
India: Bangalore & New Delhi  
617.945.8331 | rpa2ai.com  
rpa2ai Research is an independent global industry analyst and advisory firm focused on enterprise automation and artificial intelligence. rpa2ai (pronounced as RPA to AI), has extensive experience in advising global organizations on profitable digital transformation. rpa2ai combines hands-on experience with AI and Automation technologies with an in-depth understanding of AI use cases and implications for business strategy.



200 Brickstone Square, Suite 302  
Andover, MA 01810  
800.330.7335 | www.raidinc.com  
RAID Incorporated. Bringing HPC and AI Together. Revolutionizing the millennium era of supercomputing datacenters. We provide elegant solutions for High Performance Computing (HPC) and data storage.

524



Resolute offers a powerful enterprise infrastructure solution that connects and enriches all types of structured and unstructured data - from traditional data warehouses to external subscriptions and ontologies. Using cutting edge deep learning techniques, Resolute relates heterogeneous data sets, capturing latent similarity and hierarchical features, delivering a dynamic data management experience.

19



Bristol & Exeter House, Lower Approach Road  
Temple Meads, Bristol BS1 6QS  
+44 0117 925 7019 | rethinkresearch.biz  
Rethink Technology Research is an expert in the technology, wireless, video and the internet of things (IoT) and prides itself on telling you the news you need to hear, not the news you want to hear. It offers consulting, advisory services, research papers, plus three weekly research services.



224 Common Street  
Common Street, MA 02081  
617.804.000 | sflscientific.com  
SFL Scientific is a data science consulting firm that develops custom solutions combining data strategy, deep subject-matter expertise, professional services, and technical operations. We design, prototype, integrate, and manage sophisticated AI systems by integrating emerging technologies in data engineering, machine learning, and predictive analytics.

323



245 5th Avenue, Suite 1404  
New York, NY 10016  
646.560.8485 | www.sinequa.com  
Sinequa is an ISV providing a cognitive search and analytics platform for Global 2000 companies and government agencies that connects people with the information, expertise and insights necessary for organizations to become information-driven. Our platform is fully integrated and configurable to support current and future needs around becoming information-driven.

113



1328 Mission Street  
San Francisco, CA 94103  
661.645.3831 | skymind.ai  
Skymind is the company behind Deeplearning4j, the only commercial-grade, open-source, distributed deep-learning library written for Java and Scala. We provide AI infrastructure for Fortune 2000 corporations and national governments to deploy and manage machine learning models in production.

17



2235 Enterprise Street, Suite #110  
Escondido, CA 92029  
844.777.4777 | www.skyscale.com  
SkyScale is the leading provider of cloud-based dedicated bare-metal multi-GPU platforms for the fastest HPC and deep learning performance available as a service anywhere in the world. SkyScale also hosts cutting-edge private and hybrid clouds in their innovative data centers, featuring unmatched reliability, physical and cyber security.

325



100 South State Street  
Chicago, IL 60603  
312.282.1015 | www.speciateai.com  
Speciate AI solutions help companies analyze what the market feels about their products so they can identify white-space growth opportunities, benchmark competitors, measure customer perceptions, prioritize feature investments and increase customer satisfaction. We use AI to provide 10x the customer insights at 1/10th the cost of traditional research techniques.

11



270 Brannan Street  
San Francisco, CA 94107  
415.848.8400 | www.splunk.com  
Splunk Inc. (NASDAQ: SPLK) turns machine data into answers. Organizations use market-leading Splunk solutions with machine learning to solve their toughest IT, Internet of Things and security challenges. Join millions of passionate users and discover your "aha" moment with Splunk today: www.splunk.com.

303



Wiołarska 8  
Warsaw 00-411 Poland  
+48 22 417 34 52 | togetherdata.com  
TogetherData is a Data Science House. We provide Big Data analytics services with emphasis on monetization of online datasets, aggregated by enterprises in BI, CRM, ERP systems and client applications. TGD Experts carry out audits of your existing AI solutions and comprehensively execute whole AI projects on demand. Visit: togetherdata.com

417



90 Park Avenue, 20th Floor  
New York City, NY 10016  
408.712.3513 | www.uipath.com  
Built for both business and IT, UiPath is the leading platform for enterprise Robotic Process Automation. More than 1,800 business customers and government agencies use UiPath's Enterprise RPA platform to rapidly deploy software robots that perfectly emulate and execute repetitive processes, boosting business productivity, ensuring compliance and enhancing customer experience.

302



2300 North Barrington Road  
Chicago, IL 60169  
800.370.5320 | www.univa.com  
Univa is the leading independent provider of software-defined computing infrastructure and workload orchestration solutions. Univa's intelligent cluster management software increases efficiency while accelerating enterprise migration to hybrid clouds. Univa is headquartered in Chicago, with offices in Toronto and Munich. For more information, visit www.univa.com.

329

# Sponsor and Exhibitor Descriptions



107

575 Anton Boulevard, Suite 100  
Costa Mesa, CA 92626

888.507.1737 | [www.veritone.com](http://www.veritone.com)

Veritone® is a leading artificial intelligence company that has developed aiWARE?, an open and extensible platform offering orchestrated, cognitive computing to transform and analyze structured and unstructured data for clients in a variety of markets, including media and entertainment, legal, compliance, and government.



222

40R Merrimac Street, Suite 201W  
Newburyport, MA 01950

978.270.0624 | [www.vyasa.com](http://www.vyasa.com)

Vyasa Analytics provides deep learning software and analytics for life science and healthcare organizations. Cortex is Vyasa's secure, highly scalable software platform for collaborative knowledge discovery and data analytics. The software identifies trends and patterns across disparate data sources, empowering project teams to gain insights and drive better decision making.



420

48 Wall Street  
New York, NY 10005  
[www.workfusion.com](http://www.workfusion.com)

WorkFusion's AI-powered RPA software creates & manages software robots for knowledge work. Built for data-first companies, our products automate business processes by combining AI, RPA & people in a single platform. Top enterprises choose WorkFusion to reduce their cost of doing business & to use AI to overcome the complexity of scaling operations. Visit [www.WorkFusion.com](http://www.WorkFusion.com)



115

360 Park Avenue South, 19th Floor  
New York, NY 10010

212.292.2181 | [www.vetterly.com](http://www.vetterly.com)

Vetterly is fundamentally changing the way people hire and get hired. We connect top tech talent with growing companies through our online hiring marketplace. Vetterly works with thousands of companies and tens of thousands of job-seekers.



13

2001 Gateway Place, Suite 400W  
San Jose, CA 95110

408.335.0085 | [www.weka.io](http://www.weka.io)

WekaIO Matrix™, the world's fastest shared parallel file system, leapfrogs legacy storage infrastructures by delivering simplicity, scale, and faster performance for a fraction of the cost. WekaIO's NVMe-native high-performance software-defined storage solution removes the barriers between the data and the compute layer, thus accelerating genomics, research and analytics workloads.



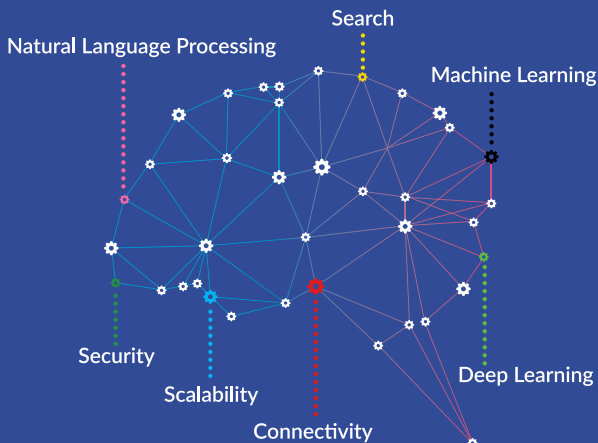
800 Corporate Pointe #350  
Culver City, CA 90230  
310.741.4880 | [xprize.org](http://xprize.org)

XPRIZE's mission is to clearly articulate a vision of a preferred and positive future across a set of domains, identify a roadmap of breakthroughs needed to get there, and establish the incentive competitions that will focus the resources, talent and technology required to enable those breakthroughs and accelerate that future.



Become Information-Driven

**BECOME INFORMATION-DRIVEN  
WITH THE LEADING AI-POWERED SEARCH PLATFORM**



Visit Booth #113 to learn more!

Follow us

[www.sinequa.com](http://www.sinequa.com) [@Sinequa](https://twitter.com/Sinequa) [www.linkedin.com/company/sinequa](https://www.linkedin.com/company/sinequa)

VISIT BOOTH #329

**CLOUD.  
CONTAINERS.  
GPUs.  
DEEP LEARNING.**

**Univa Grid Engine and Navops Launch**

See how we deployed a one million core cluster using AWS in 2.5 hours.



[www.univa.com](http://www.univa.com)

# Poster Presentations

Presenting Tuesday through Wednesday

## Ajou University Medical Center

1. Young-Min Ye and Jiwoong Kim: *Artificial Intelligence for Cluster Analysis of Patients with Allergic Diseases*

## Lucd

2. Justin LaPre; David Bauer; Chris Carothers; and Joel Branch: *Parallel Reservoir Computing with Lucd*

## National Autonomous University of Mexico (UNAM)

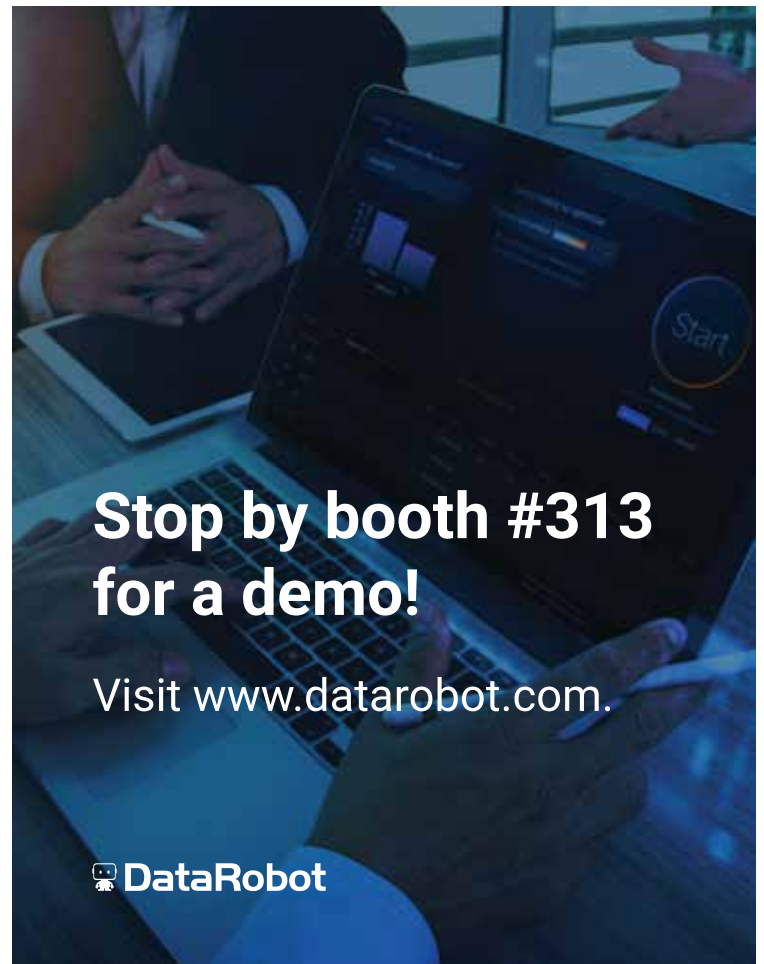
3. David Holguin: *The Augmented Designer*

## Pusan National University Hospital

4. Seung Han Yu; Kyoung Hyup Nam; Dong Hwan Kim; Jae Il Lee; Taejin Jeon; Seyoung Park; and In Ho Han: *Indoor Patient Tracking System Using Wearable Device and Internet of Things (IoT) Gateway for Smart Hospital*

## Verint Intelligent Self-Service

5. Jonathan Merriman; Ian Beaver; Abdullah Mueen; and Cynthia Freeman: *How to Determine the Optimal Anomaly Detection Method for Your Application*



Stop by booth #313  
for a demo!

Visit [www.datarobot.com](http://www.datarobot.com).

 DataRobot

 DELL EMC

 NVIDIA

THE FUTURE OF AI IS NOW

Providing the technology that  
makes tomorrow possible, today.

Visit us at Booth #207  
[dell EMC.com/ai](http://dell EMC.com/ai)

# 2018 AI World Exhibitors



The leading resource  
for the business and  
technology of AI

Gain competitive advantage using AI,  
machine learning, cognitive  
computing and more!

Visit us for:

- Industry News
- Bi-Weekly Newsletter
- Live Webinars
- Featured Whitepapers
- eBooks

SUBSCRIBE  
TODAY!

**aitrends**

The Business and Technology of Enterprise AI

[AITrends.com](http://AITrends.com)

# 2018 AI World Sponsors

## INTERNATIONAL HOSTS



## PARTICIPATING SPONSOR



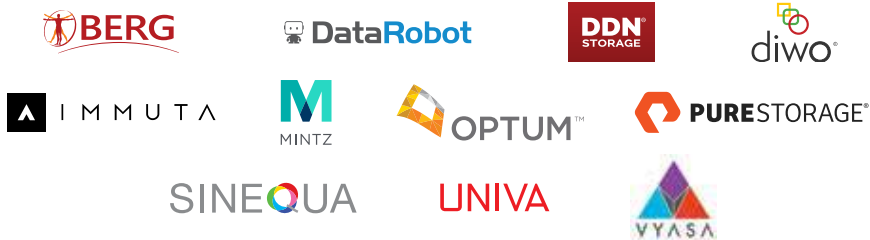
## CORPORATE HOSTS



## PLATINUM SPONSORS



## GOLD SPONSORS



## SILVER SPONSORS



## CONFERENCE BREAKFAST SPONSORS



## CONFERENCE LUNCH SPONSOR



## EXCLUSIVE DEEP LEARNING SPONSOR



## VISION SPONSOR



## WORKSHOP SPONSOR



# Media, Association and Research Sponsors

## OFFICIAL PUBLICATIONS



## PREMIER BUSINESS MEDIA SPONSOR



## PREMIER MEDIA SPONSORS



## PREMIER RESEARCH SPONSORS



## PREMIER ASSOCIATION SPONSORS



## RESEARCH SPONSORS



## EDUCATION SPONSOR



## PREMIER CONTENT SPONSOR



## STRATEGIC MEDIA SPONSOR



## ASSOCIATION SPONSORS



## COMMUNITY SPONSORS



## MEDIA SPONSORS



## VENTURE CAPITAL SPONSOR



# Canada, at the forefront of AI

**650+ Start-ups/40+ Accelerators/  
60+ Investor groups/60+ Public research labs**

Visit [Canada.ai Alley](#) at the Startup Pavilion  
to learn about the latest Canadian innovations in AI  
AI World | December 3 - 5, 2018 | Boston, MA



## Automate intelligently. Profit immensely.



Only WorkFusion can tackle the full automation needs of your business, from basic processes to complex operations.

**Smart Process Automation:**  
The only AI-driven and enterprise-ready single-platform solution.

 **WorkFusion**  
[workfusion.com](http://workfusion.com)

The Industry's Largest Independent Conference  
& Expo Focused on How Your Business Can  
**Harness the Power of AI**  
and Machine Learning Today!

**Save \$100 off your registration: Use Promo Code AIW19PG**

# JOIN US AGAIN NEXT YEAR!

OCTOBER 23-25, 2019  
BOSTON, MA  
SEAPORT WORLD TRADE CENTER

FOURTH ANNUAL



[AIWorld.com](http://AIWorld.com)

