

2022 Annual Report

*Soaring to
Greater Heights*

**OF ACADEMIC
ACHIEVEMENT**

A K A



E A F[®]



Table of Contents

- 03** Message from the President
- 04** Message from the Treasurer
- 05** Financials
- 07** Programs
 - Endowments
 - Matching Gifts
 - Fellowships
 - Undergraduate
 - Community
- 16** Awards
- 19** Donors
- 26** Leadership

Our Mission

The mission of the Alpha Kappa Alpha Educational Advancement Foundation, Inc.® is to promote lifelong learning. This is accomplished by securing charitable contributions, gifts, and endowed funds to award scholarships, fellowships and grants.

Our Vision

The Educational Advancement Foundation sees the consistent and ever-present gap in funding for STEM, music, the arts, youth enrichment and other critical development activities that are vital to supporting our youth and developing well-rounded individuals. We use our dollars to help college students to complete their education, as seed money for charitable endeavors and to support and expand community service projects. Through our mission, our vision is to perpetually reaffirm our commitment to the financial support of educational endeavors.



President's Message

Soaring to Greater Heights



The Mission of the Alpha Kappa Alpha Educational Advancement Foundation, Inc.® is to promote lifelong learning. This is accomplished by securing charitable contributions, gifts, and endowed funds to award scholarships, fellowships, and grants.

As we reflect on the challenges and changes of this past year, we are extremely grateful for the deeply rooted commitment and support of our members, donors, volunteers, and staff. The seed of perpetuity for the Alpha Kappa Alpha Educational Advancement Foundation, Inc.® (EAF) to support lifelong learning was planted in 1980 by President Barbara K. Phillips, the 20th International President of Alpha Kappa Alpha Sorority, Inc.®. By creating a perpetual endowment fund, EAF was positioned to always provide financial support to students pursuing their higher educational goals. Since our inception, EAF has achieved phenomenal growth in its endowment fund program as we ended 2022 with more than 475 endowments, of which 366 are fully capitalized and are available to award scholarships.

During the 2022-2026 Administration, EAF will be **“Soaring to Greater Heights of Academic Achievement”** as we work together to grow assets that are currently more than \$23 million. The Foundation’s commitment to lifelong learning and community support is evidenced by its strong performance over the past year as shown below:

- **Membership - 103,321 members**
- **Net assets - \$22.5 million**
- **Awarded in excess of \$4.6 million in scholarships/endowments and \$32,000 to more than 400 students and community organizations.**

As you read this annual report, we hope it offers a valuable understanding of what we do, the students and groups we serve, and the impact of our official philanthropic arm on our local communities. With the ongoing and dedicated support of our members, donors, and volunteers, we are able to continually *Soar to Greater Heights*. We give a heartfelt “thank you” to all individuals and companies who truly believe in the mission of the Educational Advancement Foundation, and upheld your steadfast commitment to help the Foundation positively impact the lives of so many deserving students and communities.

A handwritten signature in black ink that reads "Danette Anthony Reed". The signature is fluid and cursive.

Danette Anthony Reed

*President, Alpha Kappa Alpha Educational Advancement Foundation, Inc.®
International President and Chief Executive Officer, Alpha Kappa Alpha Sorority, Inc.®*



Treasurer's Message

Greetings!

I am pleased to present the Treasurer's Report for Alpha Kappa Alpha Educational Advancement Foundation, Inc.® ("EAF" or "the Foundation") the year ended December 31, 2022. We received an unqualified (clean) opinion from the Certified Public Accountant firm of Ragland, Arnold, Buchanan, Morris & Associates LLC for the financial statements as of December 31, 2022.

In the fiscal year ending December 31, 2022, total assets of the Foundation totaled \$22.9 million, which was a 20% decrease over the \$28.3 million reported at the end of 2021. Liabilities totaled \$462,669 and consisted mainly of \$311,165 of scholarships payable, \$122,143 of accounts payables, \$23,721 of accrued payroll and vacation, and \$4,788 of capital lease obligations. Total net assets totaled \$22.5 million at the end of 2022; a decrease from \$25.3 million in 2021. We ended 2022 with Total Revenues of \$4.75 million, a 30% decrease from 2021. Total Expenses were \$7.4 million. Contributions, Membership Fees, and Endowments each experienced growth rates of 43%, 14%, and 143%, respectively.

Investment Performance

Investments are the largest asset totaling \$19.4 million, which make up 86% of Total Net Assets. Despite market fluctuations, the EAF investment portfolio continues to meet its performance targets and provide a positive yield to each eligible endowment account based on positive net earnings less a slight inflation factor. Careful financial stewardship, portfolio diversification, and strong financial results contribute positively to the process by which the Foundation's mission to support lifelong learning is achieved.

Endowments

Total endowments managed by EAF grew 5% from 449 in 2021 to 475 at the end of 2022. The permanently restricted, capitalized portfolio increased 15% to 366 from 316. Steady growth in the capitalized endowment portfolio provides the foundation with a solid funding base to award scholarships and community assistance grants in perpetuity. Increases in annual giving across all EAF's programs enable us to support the educational goals of students around the world.

Thank you for your enduring support of the Alpha Kappa Alpha Educational Advancement Foundation as we continue to *"Soar to Greater Heights of Academic Achievement!"*



Karla A. Hall

Treasurer

Alpha Kappa Alpha Educational Advancement Foundation, Inc.®



Financials 2022

TOTAL REVENUES

**30% Decrease in Revenues from 2021-2022*

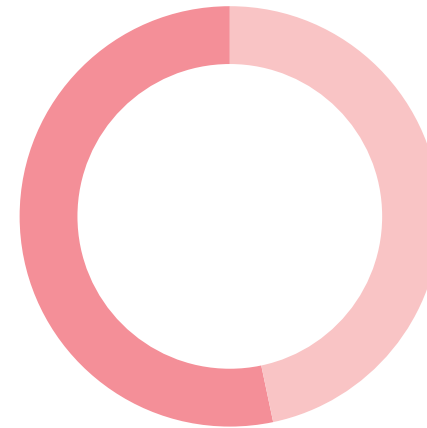
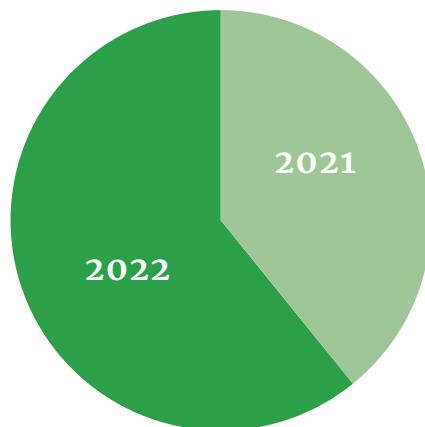
2021 **\$6,779,312**

2022 **\$4,754,164**

Contributions

● 2021
\$902,287

● 2022
\$1,387,082



Membership

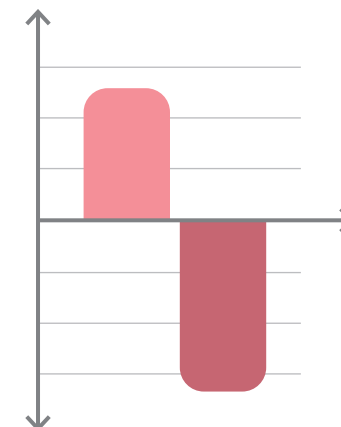
● 2021
\$908,913

● 2022
\$1,033,210

Endowments

● 2021
\$2,347,824

● 2022
\$5,708,475



Investment Income

● 2021
\$2,620,288

● 2022
\$(3,374,602)



Financials 2022 (Continued)

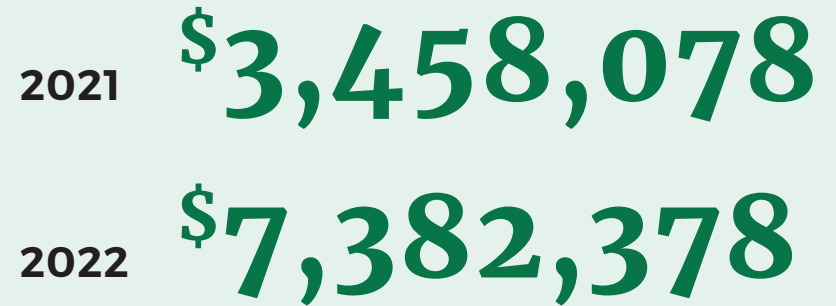
TOTAL ASSETS

**Decrease due to market fluctuations*



TOTAL EXPENSES

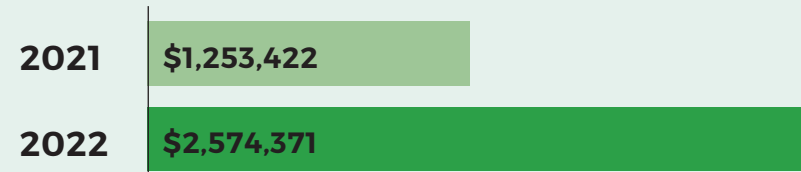
**9% decrease in expenses, net of HBCU Awards*



Awards & Grants



Operating



Management & General



Soaring in Endowments

2022 Capitalized Endowments

Adrienne Pope-Kelly Washington Endowment Fund

Alabama HBCU Scholarship Fund

Alberta G. Jones Endowment Fund

Alice Boyd Burton Alpha Rho Omega Merit Scholarship Fund

Alice S. Marriott Scholarship Fund

Alice Thomas Motts Trust Scholarship Fund

Alonzetta Landrum-Sims Investment in Our Future Scholarship Fund

Alpha Alpha Eta Omega Endowment Fund

Alpha Alpha Lambda Omega Endowment Fund

Alpha Delta Omega Endowment Fund

Alpha Kappa Alpha Founders Fund

Alpha Kappa Alpha Incorporators Fund

Alpha Lambda Omega Endowment Fund

Alpha Pi Wolfe Sisters: Nellie Gaylord, Ida Ross, Marjorie L. Ushery

Alpha Rho Omega Chapter Endowment Fund

Alpha Rho Undergraduate Endowment Fund

Ann Colbert Battles Endowment Fund

Ann Elizabeth Laury Jones Scholarship Fund

Anita Maria Black Trust Endowment Fund

Anne Mitchem Davis Endowment Fund

Archalene Amos Martin Piano Artistry Award



Ashley Tannehill Memorial Scholarship Fund

The Barbara Denson Trotter Endowment Fund

Barbara K. Phillips Endowment Fund

Barbara W. Davis Endowed Fund

Barbara A. McKinzie/Naomi Moses Scholarship Fund

Bernice Gordon Greene Educational Leadership Endowment Fund

Bernice I. Sumlin EAF Scholarship Fund

Beta Epsilon Omega Scholarship Fund

Beta Kappa Omega Endowment Fund

C. Connor and O. Brown Endowment Fund

Dr. C. Edith Booker Endowed Scholarship Fund

Caddle Family Undergraduate Endowment for Education Fund

Capturing The Promise Endowment Fund

Cardelia Patricia West Memorial Scholarship Fund

Carmelita Caruth Smith Post Graduate Endowment for Women

Carmen E. Fowler Fair Scholarship Fund



EAF® offers members, organizations, and corporations an excellent opportunity to support our mission in perpetuity through our Endowment Program. Endowments are contributions of \$25,000 or more placed into a restricted fund, administered by EAF, and used solely for scholarship awards. Only the interest and dividends are used for awards – the principal is never touched – to provide a continuous source of scholarship funds over the years.

Endowment funds may be established to honor the memory a loved one or friend ...to support a personal commitment ...to support a specific profession ...and other criteria the donor chooses. Through the specific guidelines established for awarding scholarship funds, donors can reaffirm their own personal commitments to lifelong learning.



Carol R. and Otwa L. Dixon
Scholarship Fund

Carolyn House Stewart
Endowment Fund

Caroline L. Lattimore
Endowment Fund

Carolyn G. Randolph Be The
Best You Endowment Fund

Carr Marshall Family
Endowment Fund

Carrie J. Clark
Endowed
Scholarship
Fund

Charlene
Truitt
Nelson
Endowed
Scholarship
Fund

Chelle
Luper Wilson
Endowment Fund

Chi Alpha Omega Endowment Fund

Chi Zeta Omega Charter
Members Endowment Fund

Clara McCrae Hines Scholarship Fund

Claronelle Smith Griffin
Endowment Fund

Claudia Silas Scholarship Fund

Coalition to Salute America's
Heroes Endowed Fund

Collier Family Legacy
Endowment Fund

Constance K. Holland
Endowment Fund

Cora Wesley Phillips Fellowship Fund

Cornelia Harris Banks & Sarah
Harris Banks Endowment Fund

Crystal and Eugene Sewell
Scholarship Fund

Cultivated Pearls of South East
Georgia Endowment Fund

Cynthia Duke Cox Hudley
Endowment Fund

Cynthia J. Thomas Finch
Endowment Fund

Daffney A. Henry Epsilon Zeta
Chapter Endowment Fund

Daffney A. Henry Huston-
Tillotson University

Dansby Family Scholarship Fund

Daphne T. Porter Memorial
Scholarship Fund

David and Donna Winn Educational
Scholarship Endowment Fund

Dr. Christina R. Brown/Dr. Marva
Mizell Price/Dr. LeShawndra N. Price
Endowed Legacy Scholarship Fund

Anonymous Scholarship Fund

Deborah C. and Lindsey E.
Brittain Endowment Fund

Delta Epsilon Omega
Chapter Endowed Fund

Delta Phi Omega Bea Bailey
Scholarship Fund

Delta Tau Omega-Dorothy
Kennedy and L. Margaret
Groves Keepers of the
Dream Scholarship Fund

Denise Foster-
Williams Fund

Deralyn Riles Davis
Endowment Fund

Diamond Jubilee
Pearls Foundation
Endowment Fund

Diana G. Shipley
Endowment Fund

Dolores Morton Spriggs
Endowment Fund

Dolores A. Sturdivant
Endowment Fund

Doris (Dee) Kemp Endowed
Scholarship Fund

Doris J. Nunn Terry
Endowment Fund

Doris R. Asbury Endowment Fund

Doris S. Parker Endowment Fund

Dorothy Buckhanan Wilson
Endowment for Careers in Business

Dorothy M. Hackney Endowed Fund

Dorothy Reid Arnold
Scholarship Fund

Dorothy S. Johnson
Endowment Fund

Dr. Mabel Bentley Perry & Dr.
Claude Albert Perry Sr. Endowed
Education Scholarship

Dr. Rodelia A. Glasco Endowed Fund

Dr. Shirley A. Jackson
Scholarship Fund

E. Alma Flagg-Caroline
Williams Endowed Fund

Edna Kimbrough Sheridan
Legacy Endowment Fund

Edna Smoot Griffin Scholarship Fund

Elicia Pegues
Spearman, Esq. "Our
Voices Matter
F.I.R.S.T." Fund

Ella Springs
Jones EAF
Scholarship
Fund

The ELO
Foundation
Scholarship Fund

Elsie Lavonne Lewis
Scholarship Fund

Emma Lily Henderson
Endowment Fund

Epsilon Lambda Chapter
Endowment Fund

Epsilon Nu Omega
Endowment Fund

Epsilon Rho Alumnae
Scholarship Endowment Fund

Erma W. Barron Endowment Fund

Ernestine B. Bivens and Dr. Mabel B.
Perry Endowed Fund

Ethel
Hedgemon
Lyle
Leadership
Fund

Ethel Jones
Mowbray
Endowed
Fund

Eta Upsilon
Omega Endowed
Scholarship Fund

Dr. Eva Lois Evans Scholarship Fund

Evelyn Foster Hamilton
Endowment Fund

Evelyn Sample-Oates H.O.P.E
Scholarship Fund

ExxonMobil Alpha Kappa
Alpha Sorority Employee
STEM Endowment Fund

Faye B. Bryant Excellence
Scholarship Fund

Felicia Marianne Wright
Endowed Scholarship Fund

Flenorl & Kelly Green Endowed Fund

Flossie M. Dedmond
Educational Fund

Forever Rose Memorial
Scholarship Fund

Frankie E. Ledbetter
Scholarship Fund

Dr. Franzella W. Buchanan
Scholarship Fund

Freddie Groomes-McLendon
Scholarship Fund

Frederica Wilson Endowed Fund

Gamma Omega/Alberta Gantt/
Mattie Harvey Scholarship Fund



Gamma Rho Omega Chapter Scholarship
 Gamma Zeta Omega Endowment Fund
 Sorors of Gamma Theta Omega Chapter Scholarship Fund
 Gene Ann Polk-Horne Endowment Fund
 The Great Lakes Rise up Endowment Fund
 Georgia Cross Kirby Memorial Scholarship Fund
 Giselé M. Casanova Endowment Fund
 Gizette Canegata Thomas Endowment Fund
 Dr. Glenda Baskin Glover Endowment Fund
 Gloria Harper Dickinson International Travel Endowment
 Dr. Gloria Stephens Smith Scholarship Fund
 Grace Strauther Endowment Fund
 Green-Alpha Beta-Communications Fund
 Gwendolyn & Schylbea J. Hopkins Endowment Fund
 Gwendolyn Gaston Brinkley Scholarship Fund
 Gwendolyn Gilbert Shorter EAF Scholarship

Gwendolyn J. Brinkley Endowment Fund
 Gwendolyn L. Kirtley Greater Together Endowment
 Harriet Josephine Terry Scholarship



Hattie B. Wills Endowed Scholarship Fund
 Helen Cromer Cooper Endowment Fund
 Hessley J. Hempstead II Black Men in Construction Fund
 Hilda Wilder Scholarship Fund
 The Honorable Elzie Odom Leader of Tomorrow Scholarship Fund
 Ida L. Jackson Scholarship Fund
 Ida K. Martin Endowed Scholarship Fund
 Idell S. Pugh Endowment Fund
 Imani Pearls Community Development Foundation Scholarship
 Irene Westbrooks McCollom Endowment Fund
 Iota Lambda Omega Chapter Scholarship Fund
 Iota Zeta Omega Scholarship
 Ivy Vine Charities, Incorporated Scholarship Endowment Fund
 J. Marjory Jackson Performing Arts Scholarship
 Jacqueline A. Rose Scholarship Fund
 Jacqueline O. Dansby Endowment Fund
 Jacqueline & Philip Kane Endowed Fund
 Jameseva Marshall Webb Endowment Fund
 Janet Jones Ballard Endowed Fund
 Jenell Ross Entrepreneurial Fund
 Jennifer King Congleton Endowment Fund
 Jessie Reasor Zander Endowment Fund



Jo Celeste Pettway Endowment Fund
 Johnetta Randolph Haley Endowment Fund
 John and Bella Russell Honorarium Endowment
 Johnella H. Martin Educational Endowment Fund
 Jones/Holloway/Rigsby Endowment Fund
 Joya T. Hayes Endowment Fund
 Joy Elaine Daley Endowment Fund
 Joyce Green Barlow Endowment Fund
 Joyce Henderson Endowment Fund
 Joyce V. Austin Scholarship Fund
 Juanita Sims Doty Endowed Fund
 Dr. Julia V. Clark STEM Scholarship
 Kathleen Hill Dyer Fellowship Fund
 Kappa Lambda Omega-Meharry Medical College Endowment Fund
 Kappa Omega Endowment Fund
 Katina Semien Political Science & Pre-Law Scholarship
 Kathy Walker Steele Endowment Fund
 Katherine Goble Johnson STEM Endowment Fund
 Keisha Wilson Tanner and Chelsea Tanner Scholarship Endowment Fund
 Klein Street Kids Trailblazers Endowment Fund
 Kristel A. Johnson Endowment Fund
 Lambda Alpha Omega Endowed Fund

Lambda Heritage Endowment Fund
 Lane College Endowed Scholarship Fund
 Larry & Carolyn Suarez Fund for Business and Entrepreneurship
 Larzette G. Hale Wilson/Eva L. Evans Endowment Fund
 La Shawn R. Stanton Endowment Fund
 Dr. Laura Noble Banks-Reed Endowment Fund
 LaVern S. Tarkington Endowment Fund
 Laverna Williams Johnson Endowed Scholarship Fund
 Leadership Fellows Legacy Fund
 Leadership Fellows Boule/Leadership Seminar Assistance Fund
 Legacy of Pearls Endowment Fund
 Lehia Anderson Bradby Memorial Endowment Fund
 Linda Henry Gilliam Endowment Fund
 Linda Groomes Endowment Fund
 Linda Marie White Endowed Scholarship Fund
 Living Legends Grant
 Loann Honesty King Endowment Fund
 Lois Mailou Jones Fine Arts Fund
 Lorraine Griffin Johnson Endowment Fund
 Lorraine R. Green Endowed Fund
 Lueburda Jamison Myers Endowed Scholarship Fund



Lucille Ellis Floyd and Zeta Xi Omega Chapter Endowed Scholarship Fund

Lucille Johnson Piggott Endowed Scholarship

Lucille M. Brown Endowment Fund

Lula Lang Jeter Endowment Fund

Lucretia Payton Stewart Endowment Fund

Dr. Mae C. Jemison Science & Technology Award

Madam Formers for Service and Education Endowment Fund

Maggiann Whatley Green Scholarship Fund

Mamie McKnight / Ginger McKnight Chavers Graduate Scholarship

Marcletta R. Kerr Endowment Fund

Marilyn Glenn Blackmon Endowment Fund

Marjorie H. Parker Endowment for Careers in Archives

Marjorie H. & Franka H. Young Scholarship Fund

Marsha Lewis Brown Endowment Fund

Martha Martin Trust-Ivy Endowment Incorporated

Martha Perine Beard Endowment Fund

Marva J. Lee Endowment Fund

Mary B. Conner Educational Endowment

Mary Bentley Lamar Caring for Those Who Care Fund

Mary Hogan Smith Endowed Scholarship Fund

Mary Shy Scott Arts Endowment Fund

Mary F. Williams Teacher Education Scholarship Fund

Marye Jeffries Endowment Fund

Mary Louise Williams Scholarship Endowment Fund

Mattelia Grays-Julia Purnell Endowment Fund

M. L. Matthew Legacy Fund for Excellent Scholarly Performance

Maxine L. Black Endowed Scholarship Fund

Melanie C. Jones South Eastern Region Undergraduate Endowment

Meredith L. Henderson Endowment Fund

Mid-Atlantic Region Scholarship Fund

Mikayla C. Fishburne Scholarship Endowment Fund

Mildred Logan Taylor Endowed Scholarship Fund

Mildred T. Kitchens / Maxine W. Thurmond Education Endowment Fund

Miss Pearl Soror Anna Adams Mims HBCU Scholarship Fund

Mitzi Dease Paige Endowment Fund

Monarch Awards Foundation of Xi Nu Omega Chapter

Monica Kaufman Pearson Mass Communications Endowment Fund

Mozel Jenkins Spriggs Scholarship Fund

Mu Kappa Omega / Julia F. Thompson, Inc. Scholarship Fund

Mu Lambda Omega Endowment Fund

Nadine C. Bonds Endowment Fund

Nadine Vargas Stewart Endowment Fund

Nancy Gardner Sewell Endowed Fund

Next Step Scholarship Award

Nola Williams/ Lambda Alpha Omega Endowment Fund

Norma S. White Music Endowment Fund

Norman Jack Hayes Scholarship Fund

Norma Jean Tucker Endowment Fund

North Atlantic Diamond Soror Endowment Fund

North Atlantic Region Catastrophic Assistance Endowment Fund

North Atlantic Region Pearl Soror Endowment Fund

North Atlantic Region Self Care Fellowship Endowment Fund

Nu Gamma Omega Chapter Scholars Award Fund

Nu Lambda Omega Scholarship Fund

Octavia Florence Michelle Legacy Fund

Odessa Nelson SAR Cluster VII Endowment Fund

Dr. Olivia Letts Commitment to the Dream Endowment Fund

Omicron Eta Omega Scholarship Endowment Fund

Omicron Omicron Omega Endowment Fund

Ootsie, Lillian Dunn Thomas Endowment Fund

Pamela Bates Porch Endowed Scholarship Fund

Pamela Lynne Redden, MD, Great Lakes Wellness Fund

Partica M. Batten Endowment Fund

Patricia and Theresa Massey Endowment Fund

Patricia Ann Dawson Lee Scholarship Fund

Patricia Petty Wilson Scholarship Fund

Pearl L. Harrison Fine Arts Endowed Funds

Pearls of Loudoun / Psi Rho Omega Chapter Endowment Fund

Pearls of Promise Foundations Ivyletts Scholarship Fund

Peggy Lewis LeCompte Endowment Fund

Phi Epsilon Omega Chapter P.E.A.R.L. Scholarship Fund

Phi Kappa Omega Chapter EAF Scholarship Fund

Phi Lambda Omega Endowment Fund

Phi Phi Omega Scholarship

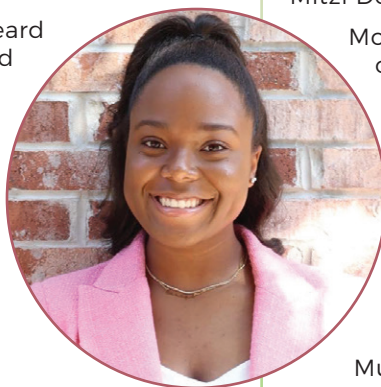
Phi Xi Omega Endowment Fund

Phyllis Eleanor Robinson Endowment Fund

Pi Alpha Omega Chapter EAF Endowed Scholarship Fund

Dr. Polly Sparks Turner Health Professions Endowment Fund

Portentous Twist of 46 AKA Alpha Chapter 1981 Endowment Fund



Portia L. Trenholm Endowment Fund
 Psi Theta Omega Jannie Johnson Mitchell Endowment Fund
 Psi Zeta Omega Smoky Mountains Pearls Endowment Fund
 Rachel Ashburn Mallory Undergraduate Leadership Development Scholarship Fund
 Raygene C. Paige Endowment Fund
 Rayverne Baskin Wilson Endowment Fund
 Reva W. Allman Endowment Fund

R. G Wilson Health Endowment Fund

Rho Chi Omega Cultured Pearls Endowment Scholarship Fund

Rho Delta Omega Chapter Endowment Fund

Rho Omicron Omega Endowment Fund

Rho Pi Omega Sisterhood of Service Endowment Fund

Rho Zeta Omega Chapter Endowed Fund

Rita White Roberts Scholarship Fund

Rose Butler Brown Endowed Fund

Ruby Batts Archie Endowment Fund
 Rust College Endowed Scholarship Fund

Ruth Coleman Endowed Scholarship
 Ruth C. Easley Gerontology Scholarship Fund

Ruth Simmons Endowment Fund

Sadie Sermon Mickle Hortense Caldwell-Harvey Endowment Scholarship Fund

Sandi Sumbry (Miss Fashionetta) Pearls of Paradise Foundation Scholarship Fund

Sarah R. Simmons EAF Endowment in Memory of Jayne Doctor

SAR Cluster I Endowment Fund

SAR Cluster II Endowment Fund

SAR Cluster III Endowment Fund

SAR Cluster IV Endowment Fund

SAR Cluster V Endowment Fund

SAR Cluster VI Endowment Fund

SAR Cluster VIII Endowment Fund

Shelby Robinson Bogni Bison Achievers Fund

Dr. Savanah C. Jones Scholarship Endowment Fund

Sharon Brown Harriott Community College Access & Equity Endowment

Shirley R. Fisher Endowment Fund
 Sigma Lambda Omega Endowed Scholarship Fund

Sigma Zeta Omega Endowment Fund

Solomon White Beta Alpha Leadership Fund

Sonya L. Bowen Endowment Fund

Sorors of South Carolina Endowment Fund

South Atlantic Regional Conference Endowed Fund

South Eastern Region Endowment Fund

Sonja W. Garcia / Stella J. Lett Undergraduate Leadership Endowment

Susan Simms Marsh Endowment for Careers in Law

Taahsela K. Holton Memorial Scholarship

Tanya M. Crossley Endowment Fund

Tari T. Bradford Endowment Fund

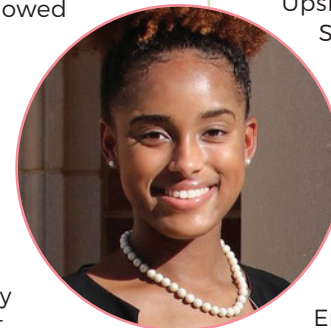
Tau Beta Omega Endowed Scholarship Fund

The Cultured Pearls of Tau Pi Omega

The Geraldine Adams Care for Others Scholarship Fund

The Honorable Dr. Barbara Odom-Wesley Spirit of Achievement Scholarship Fund

The Joyce Rush Gilchrist Scholarship Fund



Thelma K. Evans Cancer Research Endowment Fund
 Theta Mu Omega Eugenia Dean Scott Memorial Fund

Theta Theta Omega Lois E. Bolden Memorial Scholarship Fund

Tiffany Moore Russell, Legal Social Justice and Advocacy Endowment Fund

Tracey Morant Adams Scholarship Fund

Tondalaire Deon Ray Ashford Scholarship

Toni S. Kendrick Educational Endowment Fund

Twyla Woods Buford Endowment Fund

Undergraduate Centennial Endowment Fund

Undergraduate Flourish Launching New Dimensions Endowment Fund

Undergraduate Global Leadership Endowment Fund

Undergraduates Launching New Dimensions Endowment Fund

Upsilon Alpha Omega Chapter/Beauty P. Baldwin Endowed Scholarship Fund

Upsilon Tau Omega Scholarship Fund

Vanessa Rogers Long Endowment Fund

Velma Lois Jones EAF Endowment Fund

Verna H. Johnson Endowment Fund

Vera Forte McCain Endowed Funds

Vertelle and James Middleton / Delores Ham Oliver Human Service Scholarship

Total ENDOWMENT DONATIONS
\$5,708,475



Vicki Miles LaGrange
Endowment Fund

Virginia F.
Hightower
Endowment Fund

Wendye D. Mingo
Information
Technology
Endowed
Scholarship Fund

Wilhelmina R. Delco
Endowment Scholarship

Wilma Allison Moore Endowed
Scholarship Fund

William Lewis Dawson
Memorial Scholarship Fund
for Theta Omicron Omega

Willie Mae James/Descendant(s)
of Richmond + Mary (Carolina)
James' And Still I Rise
Pathway Scholarship Fund

Willie Mae James Descendant(s)
of Ishmael & Emily (Harvin)
Taylor's "Mother to Son"
Pathway Scholarship Fund



Wilma H. Tootle
Scholarship Fund

Leona H. Dotson Women
in Science, Technology,
Engineering & Math
(STEM) Scholarship

Xi Alpha Omega - ILECF
Lasting Legacy Fund

Yarborough And Paige
Endowed Scholarship

Dr. Yvonne Barnett and Dr. Rhoneise
Barnett-Smith, MD Endowed
Legacy Scholarship Fund

Yvonne Perkins Endowment Fund

Zeta Delta FZDM EAF
Scholarship Fund

Zeta Rho Omega Endowment Fund

Total **AMOUNT OF
SCHOLARSHIPS
AWARDED**
\$419,000

**PLEASE CONSIDER A
LEGACY GIFT TO EAF**

To make a gift in your Will or Living
Trust that will benefit our mission
for years to come, please contact
our Executive Director Erika V.
Everett at 773-947-0026.



Soaring in Matching Gift Participation

EAF is grateful to those companies and organizations with matching gift programs that help to maximize our impact. Listed below are the companies currently providing matching gifts to employee donations.

2022 Matching Gift Companies

AIG – American International Group
Apple
Bank of America
Bayer
Biogen
BP Matching Fund Program
CBRE, Inc
Chevron Corporation
Chubb Insurance
Cigna
Duke Energy
First Horizon Bank
GE Foundation
Google
HCA Healthcare
Home Depot Foundation
IBM Corp.

Johnson & Johnson
JP Morgan Chase
Leo Burnett
LPL Financial
MasterCard International
Merck & Co., Inc
Microsoft Giving Campaign
MUFG Union Bank, N.A.
Reynolds American
Robert Half International

Salesforce, Inc
Shell Oil
SS&C Technologies
Stanley Black & Decker
State Farm Insurance
Takeda Pharmaceuticals
The Blackbaud Giving Fund
The Coca-Cola Company
The Home Depot
The Kresge Foundation

TIAA
Truist
United Healthcare
Verizon Communications
Warner Bros. Discovery

Total DONATIONS MATCHED
\$16,366


**COMPANY MATCHING
GIFTS CAN DOUBLE
YOUR EAF DONATION**

Please check with your company's Human Resources Department to determine if this option is available, and for the required documentation.



Soaring in Fellowships

EAF currently manages **64 Fellowship programs**, with awards made in even-numbered years. Unlike traditional fellowships, EAF Fellowship Awards do not require enrollment in an academic institution. They are granted to individuals performing research and projects with practical applications for improving quality of life.

Since these awards began in 1995, EAF has been pleased to support a wide range of purposes, such as finding non-violent solutions to human disputes, conducting research on hypertension, and measuring the impact of nuclear testing on marine life.

2022 Fellowship Recipients



Ozhene Codner

Chelle Luper Wilson NOLA Scholars



On Pointe Dance

Chelle Luper Wilson NOLA Scholars



Cierra McKenzie

Kafi Wilford Constantine Fellowship



Chase Easley

Chi Alpha Omega Fellowship



Loreal Wilson

Chi Alpha Omega Fellowship

Total AMOUNT OF ENDOWMENT & FELLOWSHIP AWARDS
\$4,676,123



Soaring in Undergraduate Programs

The “Youth Partners Accessing Capital” program, known as Youth P.A.C., involves young people in the philanthropic process. Since 1997, it has provided awards and scholarships that support the healing, nurturing, learning, and uplifting of youth through development of lifelong learning skills.

The program pays large dividends by developing trained, capable future leaders.

Youth P.A.C. is structured for undergraduate members of Alpha Kappa Alpha Sorority® and her chapters and is chaired by the Foundation’s Second Vice President.

2022 Youth P.A.C. Scholarship Recipients



Nina Altman

The University of Texas at Austin



Tiara Cowart

Auburn University at Montgomery



Kyara Johnson

The University of Texas at Austin



Denean Mayes

The University of Illinois at Urbana-Champaign



Erica McAlester

The University of Tulsa



Rachel Ridley

Saginaw Valley State University



Jackie Simmons

The University of Oklahoma



Sydney Stuart

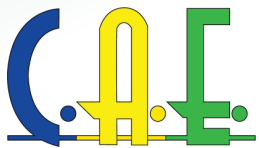
Howard University



Soaring in Community Assistance Programs

Community Assistance Awards assist organizations for specific civic, educational, or human service projects.

2022 Awardees



Community Arts Experience, Inc.

Community Arts Experience (C.A.E.) 501(c)(3) charitable organization is dedicated to empowering individuals to transform culture. C.A.E. delivers an alternative

learning & training system that provides evidence-based programs and services to equip children ages 7-17, families, and adults with the education, skills, and moral compass to flourish in their communities across generations.



Genesis Joy House Homeless Shelter, Inc.

To improve the quality of life for homeless female veterans with many proven programs that break the cycle, creating self-sufficiency and accountability.



COMMUNITY ASSISTANCE AWARDS SUPPORT INITIATIVES DESIGNED AND IMPLEMENTED BY INDIVIDUALS WHO KNOW THEIR COMMUNITY'S NEEDS BEST. COMMUNITY ASSISTANCE AWARDS HELP LEVERAGE FUNDS IN A MANNER THAT DOES THE MOST GOOD.





The Ivy Centennial Foundation

The Ivy Centennial Foundation, Inc. (ICF) mission is to provide scholarships, community service programs, and outreach to support the educational achievement of youth and to promote health and wellness

in the Southern California community and beyond. ICF is comprised of dedicated community leaders that have come together to address identified needs in our community and to uplift the next generation by nurturing their talents and abilities and providing resources to support their endeavors and dreams.



Someone Cares, Inc.

Someone Cares Inc. serves a diverse group of people in the Atlanta Metropolitan Area. We provide both primary and mental health care services.

Because we accept all people, regardless of income or insurance, we often work with those who are without homes and have a history of trauma and maladaptive behaviors. We are seeking to have our Mental Health Therapists trained in the most evidence-based trauma therapies in order to better assist our consumers.



North Central YMCA Youth & Teen Center

As a 501(c)3 nonprofit, charitable organization, the Y provides crucial programs and services to more than

65,000 people every year to ensure everyone has a chance to succeed and belong.



Tea Rose & Ivy Society, Inc.

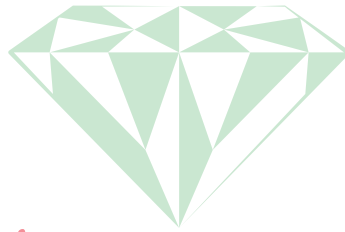
Our mission is to offer growth and leadership to youth, promote high academic achievement and post-secondary education.



Total COMMUNITY ASSISTANCE AWARDS \$32,000



Soaring in Scholarships



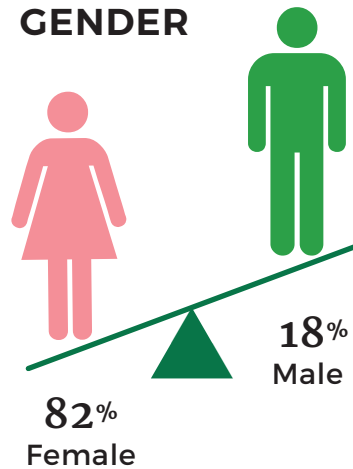
2022 Award Statistics

SCHOLARS

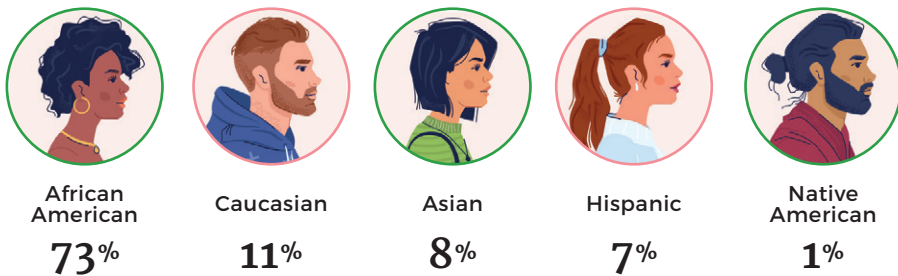


- 50% Graduate
- 50% Undergraduate

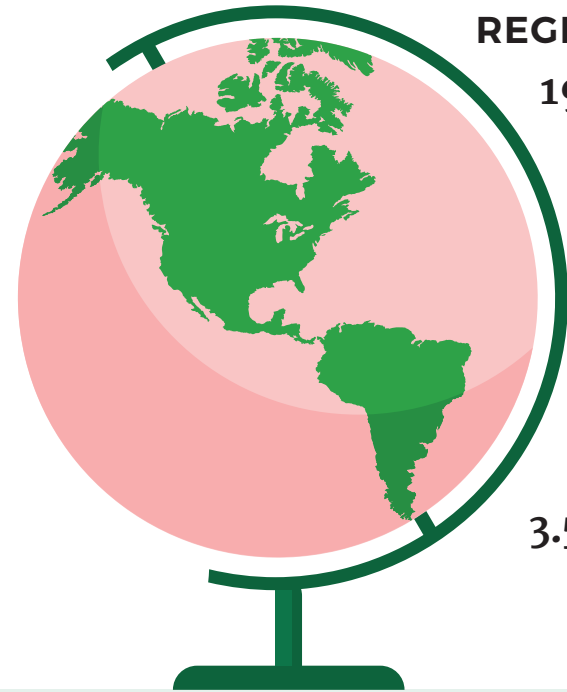
GENDER



ETHNICITY

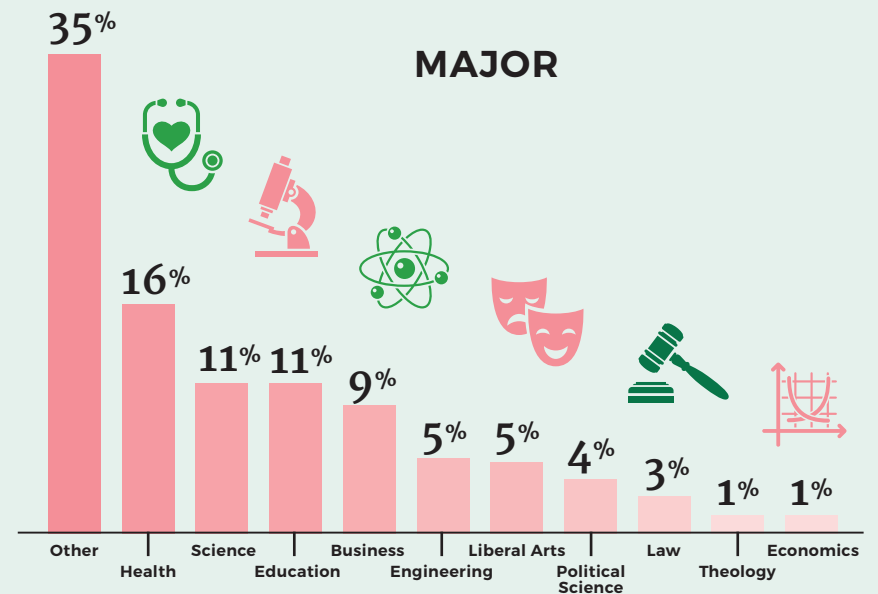


REGION



- 19% North Atlantic
- 10% Mid-Atlantic
- 15% South Atlantic
- 10% Great Lakes
- 3.5% South Eastern
- 13% South Central
- 9% Central
- 10% Mid-Western
- 10% Far Western
- 3.5% International

MAJOR





2022 Donors

General Fund Donations

\$10,000 & Above

Mary S. Alexander
Babette Black
Lambda Epsilon
Omega Chapter
State of Illinois
TASC Combined
Federal Campaign
Lu-Shawn M. Thompson

\$1,000 – \$9,999

Amazon Smile
Jacqueline R. Avery
Ronicsa M. Chambers
Dainelle N. Clark
Patrina M. Clark
Tanya M. Crossley
Jackie Davis-Betserai
Nichelle D. Dawkins
Carrie Durley
ECMC Foundation
Mildred A. Edwards
Gail P. Forest
Yvette L. Gray
Pamela Harmon
Lois M. Hatch
Rose M. Butler-Hayes
Lynnee D. Hopson
Alice E. Jenkins
Kristel A. Johnson

Jasmine Johnson
Doreathea Johnson
Johnson & Johnson
Horace Knight
Mina LaGrange
Regenia A. Moore-Lee
Bevely N. Nash-Lowe
Rachel A. Mallory
Renee L. Gaskin-Martin
Patricia A. Massey
Theresa B. Massey
Jacqueline C. McGuire
Roslyn W. McQueen
Micron Foundation
Mid-Western Region
Mechelle T. Moragne
Network For Good
Kimberly J. O'Bryant
Lavdena A. Orr
Susan Peevy
Kathy R. Pettway
McCray Pettway
Yvette Rhodes
Samantha RDL Richards
David Spenciner
Gwendolyn D. Taylor
The Blackbaud Giving Fund
Gerald Tootle
United Community Bank
Foundation Inc.
United Way of Central Indiana
United Way of Central Maryland

United Way of Central Minnesota
Antoinette A. Washington
Lynette Washington
Joyce Bivins Watson
LaTricia Woods
Shevawn Broxton Young

\$500 – \$999

Danielle J. Austin
Lisa B. Belt
Cassandra F. Borden
Catina D. Broadway
Sabrina N. Brooks
Etta Brown
Julia Brown
Rosemary Wilkins Buffer
Mary Chapman
Charities Aid Foundation
Chi Psi Omega Chapter
Harriett G. Church
Cigna
Lisa Davis
Tracie M. DeJarnette-Holly
Tanya J. Eldemire
LaWanda Evans
Fidelity Charitable Gift Fund
La-Dine' D. Gamble
Mildred Y. Gardner
Janice T. Gary
Neisha Geoffroy
Valda O. Gibson

Dawn B. Griffin
Jennifer E. Harris
Shelia J. Harrison
A. H. Heishman
Chantal Hess-Taylor
Arliana Humphrey
Judy Ingram
Joy Jackson-Guilford
Shelia J. Johnson
Susan M. Johnson
Colleen Jones
Kappa Iota Omega Chapter
Nicole C. Lacey
Sonja McIntosh
Alana T. Miller
Janet B. Myles
OneHope Foundation
Avalyn W. Pace
Veronica Parham-Dudley
Phi Kappa Omega Chapter
Linda Rainey
Latonya M. Raston
Lawanda W. Reynolds
Brigid A. Roberson
Kimberly W. Shorter
Candace Simmons
Herthesia L. Sinclair
LaToya T. Smith
Valerie Smith
Marilyn G. Sullivan
Cydney E. Taylor
Shondelyn L. Towner



Jacquelyn G. Wilson
Twyla G. Woods-Buford
Kathryn F. Worthen
United Way of GR
United Way of Long Island
United Way of The
National Capital Area
Xi Omega Chapter
Xi Rho Omega Chapter

\$100 – \$499

Deborah A. Abbott
Linda K. Adkins
JoLinda Agnew
Jennifer L. Allen
Noelle Allen
Jeneene M. Allette
Alpha Iota Chapter
Alpha Psi Omega Chapter
America's Best Local
Charities Donor Choice
Erika D. Amos
Stacey D. Anderson Thomas
Michelle Anderson-Johnson
Todra L. Anderson-Rhodes
Carmen R. Anthony
Keri Ayres
Josephine C. Baker
Michelle Baker-Bartlett
Auretha Baldwin
Marticia Banks-Booker
Joi Bass
Renese Bates
Pamela A. Battle
Lenora I. Baytop
Britni Bell
Joi Ben
Deborah Benard
The Benevity Community
Impact Fund
Clara Bilal
Tamra Billinghurst-Black

Ericka D. Black
Karmella H. Blackmon
Zaukema Blanding
Linda C Blue
Nuriya B. Bonner
Laura Boone
Jordyn Nicole Booth
Acquanetta L. Bracy
John Branch
Karen E. Breach-Washington
Karen M. Britto
Shelia Brooks
Pattye L. Brown
Angela M Brown
Kimberly Brown
Betty Brown-Williamson
Shuronia K. Bryan
J Kamala Buckner
Keisha Burnett
Allyson Burns
Sondra Burton-Harris
Carol L. Butts
Angela M. Campbell
Donna E. Carter
Monique C. Casey-Bolden
CBRE, Inc.
Priscilla Cherry
Natasha J. Chou
Deirdre Clarke
Kristin Clarkson
Pamela B. Clay
Jacobi Cleaver
LeKeisha D. Cliatt-Presley
Chandra R. Cohen
Lillian J. Collins
Sandra E. Collins
Charlene M. Collins
Raynetta M. Collins
Neldra P. Colwell
Kim V. Cooley
Dorothy Cottom
Rhondalynn Crawford

Jennifer L. Creighton
Jacqueline R. Crisp
Sylvia Crowder
LaDessa E. Cunningham Pearson
Melanie Curry
Candi Cylar
Kanethia Daniel
Glenice L. Daniel-Chambers
A. K. Davis
Kim Davis
Annie J. Dawson
Tamica Dillon
Tywana H. Dorsey
Lynnette Drake
Stephanie Duell
Jyl A. Dupont
Beverly Ebanks
Leticia Ebb
Nicole Y. Edwards
Tabitha Elien
Cindy Ayers Elliott
Alisa E. Evans Debnam
Nichelle Evans-Esser
Daphne C. Ferguson-Young
Jennifer Fields
Alice D. Fleming
Elnora Flewellen
Pamela S. Foster
Denise Foster Williams
Shawanna J. Fowler
Josephine Franklin
Kathy R. Frazier
Barbara D. Freeman
Chayla M. Freeman
Frontstream
Sherylle Fuller
Tifinie Garrett
Sherry L. Gary
Brenda Goins-Banks
Goldman Sachs
Adrienne Y. Gordy
Lai A. Granger

Loretta Gray
Jefferia Grayson
LaSonya Green
Kourtney Green
Melissa Green
Calperta D. Green
Priscilla J. Green
Jean A Greene
Janel E. Greene
Michael Grice
Cassandria Hansbrough
Glynda C. Harrington
Rhonda D. Harris
Carlean Harris
Rosemary M. Heard
Lynnette M. Heard
Angela D. Henderson
Larrissa D. Henderson
Brenda R. Herrington
Brittney Hicks
LaTanya Higginbotham
Ingrid W. Hilliard
Martha J. Hines
Susie S. Hodges
Lottie Holland
Lauretta H. Holloway
Orielle Hope
Carolyn W. Hopkins
Russell Horowitz
Holly Howard
Howard Family Charitable Trust
Rose M. Howell

Total **INDIVIDUAL,
UNRESTRICTED
DONATIONS**
\$523,867



Deborah G. Huff
Shanitra Hughes
Mercides Hunter
The Huntington National Bank
Chanel Hutchinson
Cathy Ivey
Myrtice C. Jackson
Cynthia Jackson
Mary T. Jackson
Sonia J. Jackson Myles
Reba Jacobs-Miller
Gia L. James
Joyce S. Jamison
Niki Jarrett
Nathalia T. Jeffrey-Fort
Michelle Jereb
Julie Johnson
Felicia Johnson
Marianne T. Johnson
Timothy T. Johnson
Vonda K. Johnson
Brenda Johnson
Farrasha Jones
Jennifer Jones
Virginia Jones
Teola T Jones
Guinevere Jones-Wood
Jacquenita A. Jordan
Ariane E. Joseph Lewis
Kappa Chi Omega Chapter
Kappa Nu Omega Chapter
Marilyn J. Kennerson
Cassandra King
LaTosha LaFleur-Oliver
Gretchen R. Leavy
Karen R. Lee
Karen Lee
Kayla Lee
Sandra Lewis
Angelique Lewis- Phillips
Barbette A. Lherisson
LaShawnda Lindsay

Brenda J Lockhart
Emma A. Loman
Juliette Lomax-Homier
Bridgette Long-Hickey
Pamela Lonzer
Patricia Lowe-Gould
Melody M. Smalls
Mary L. Madison
Angela H. Mahome
Bobbie Maniece-Harrison
Kathleen O. Marshall
Lydia R. Martin
Wanda J. Mason
Monica McCoy
Patricia F. McGill
Mattie D McMullen
Donna K. Miles
Myra M. Mills
Yvonne L. Mills
Jacquelyn Mims
Anne Mitchell
Joyce Moorehead
Eva B. Moorman
Claire A. Mortimer
Mu Sigma Omega
Amanda Muhammad
Monique Nelms
Ashley Nelson
Madeline W. Nubie
Essie S. Pace
Anne Parker
Linda Patrick
Jacqueline L. Payne
Tracy I. Payton-Lester
Keshia Pendergrast
Renae L. Perez
Louise Peterman
Phi Omega Chapter
Pi Alpha Omega Chapter
Carmelita Pierre
Felecia J. Piggott-Long
Alma Plummer Marshall

Anie Polastre Jackson
Jade Ranger
Linetta Ratliff
Marie E. Redd
Floyd Reed
Angela Reed
Destiny Reynolds
Nala Richards
Victoria Richardson
Deborah Robinson
Jamal Rorie
Rosalind Ross
Carole J. Ross
Misty Rosser-White
Yvette Rudisel
Angela J. Russell
Salmata Saaka-Lyons
Jennifer Sawyer
Joan Scott
Yvonne M. Scott
Cheryl Scott-Harris
Erin J. Searles
Sonja D. Shivers
Sharon Simmons
Sherkeria R. Simmons
Lynne Simpson
DeLonda M. Singleton
Sharon Smiley
Stephanie Smith
Jori Smith
Tamala Smith
William Smith
Stephanie Snead Poellnitz
Shiree M. Southerland
Paula J. Spence-Evans
Lunetta Spivey
Maryann Sprinkle-Walker
Rose Stemmons
Sonya B. Stephens
Mary W. Stoddard
Sandra D. Stowes
Sharon S. Strange Lewis

Delisa Stuckey
Danielle Summerville
Catherine R. Sumpter
Divania Sykes
Georgia M. Tatom
Janet Taylor
Theta Omega Omega Chapter
Theta Xi Omega Chapter
Dana Thomas
Yolanda M. Thomas
Camille Thompson
Jacinta Topps
Angela Trapp
Betty Tucker
Belinda L. Turner
Stephanie W. Van Vark
Delores Varner
Joannie G. Wade
Viveca Y. Ware
Vonda Ware
Tonja Washington
Phyllis H. Washington
Jeannette Watkins
Carita Watson
Diana J. Wharton
Janet P. Wheeler
Deidre W. Whittle
Hope D Williams
Rose B. Williams
Anika A. Wilson
Valeria H. Wilson
Sharmell Wilson
Lori L. Woodson
Tasha Woodus
Sharon B. Wright
Michael Yoon
Tina Younger



Chapter Donations

\$1,000 or More

CENTRAL REGION

Alpha Mu Omega
Chi Chi Omega
Chi Omega Omega
Delta Chi Omega
Delta Delta Omega
Epsilon Epsilon Omega
Epsilon Kappa Omega
Eta Omega
Gamma Kappa Omega
Gamma Omega
Lambda Alpha Omega
Lambda Tau Omega
Theta Omega
Upsilon Mu Omega
Xi Nu Omega

FAR WESTERN REGION

Alpha Alpha Iota Omega
Alpha Gamma Omega
Alpha Nu Omega
Delta Beta Omega
Delta Zeta Omega
Epsilon Xi Omega
Eta Gamma Omega
Eta Lambda Omega
Eta Nu Omega
Eta Rho Omega
Kappa Omega Omega
Lambda Chi Omega
Mu Beta Omega
Mu Epsilon Omega
Mu Lambda Omega
Omega Delta Omega
Omega Omicron Omega
Psi Upsilon Omega
Rho Delta Omega

Theta Alpha Omega
Xi Gamma Omega

GREAT LAKES REGION

Alpha Alpha Omega
Alpha Omega
Alpha Omicron Omega
Alpha Rho Omega
Beta Beta Omega
Delta Nu Omega
Delta Tau Omega
Eta Iota Omega
Eta Upsilon Omega
Gamma Phi Omega
Iota Iota Omega
Iota Nu Omega
Iota Sigma Omega
Lambda Phi Omega
Lambda Pi Omega
Omega Epsilon Omega
Omega Xi Omega
Phi Psi Omega
Pi Tau Omega
Psi Eta Omega
Sigma Omega
Theta Chi Omega
Theta Lambda Omega
Xi Epsilon Omega
Zeta Alpha Omega
Zeta Theta Omega

INTERNATIONAL REGION

Eta Beta Omega
Mu Gamma Omega

MID-ATLANTIC REGION

Alpha Beta Alpha Omega
Alpha Lambda Omega
Alpha Phi Omega
Alpha Theta Omega

Alpha Zeta Omega
Beta Iota Omega
Chi Omega
Chi Rho Omega
Delta Xi Omega
Gamma Delta Omega
Gamma Upsilon Omega
Iota Kappa Omega
Iota Omega
Lambda Kappa Omega
Lambda Omega
Lambda Psi Omega
Mu Omicron Omega
Omega Lambda Omega
Omicron Chi Omega
Omicron Omega Omega
Omicron Pi Omega
Phi Omega
Pi Rho Omega
Rho Eta Omega
Rho Psi Omega
Sigma Tau Omega
Tau Phi Omega
Theta Beta Omega
Upsilon Omega
Xi Phi Omega
Xi Upsilon Omega
Zeta Chi Omega
Zeta Kappa Omega
Zeta Mu Omega

MID-WESTERN REGION

Alpha Chi Omega
Alpha Epsilon Omega
Beta Sigma Omega
Epsilon Nu Omega
Mu Omega
Mu Omega Omega
Theta Upsilon Omega
Xi Tau Omega

NORTH ATLANTIC REGION

Alpha Alpha Lambda Omega
Beta Alpha Omega
Chi Theta Omega
Delta Sigma Omega
Epsilon Iota Omega
Epsilon Omega
Epsilon Omicron Omega
Epsilon Pi Omega
Epsilon Sigma Omega
Epsilon Upsilon Omega
Eta Omega Omega
Iota Gamma Omega
Iota Lambda Omega
Iota Tau Omega
Kappa Theta Omega
Nu Xi Omega
Nu Zeta Omega
Omega Mu Omega
Omega Omega
Omega Psi Omega
Omega Zeta Omega
Omicron Xi Omega
Phi Beta Omega
Pi Iota Omega
Pi Kappa Omega
Pi Theta Omega
Psi Epsilon Omega
Psi Lambda Omega
Psi Omega
Rho Gamma Omega
Rho Kappa Omega
Rho Mu Omega
Rho Theta Omega
Rho Xi Omega
Sigma Psi Omega
Sigma Zeta Omega
Tau Delta Omega
Tau Nu Omega



Tau Omega
Theta Iota Omega
Theta Kappa Omega
Theta Pi Omega
Theta Psi Omega
Upsilon Delta Omega
Upsilon Epsilon Omega
Upsilon Tau Omega
Xi Omega
Xi Sigma Omega
Xi Zeta Omega
Zeta Nu Omega
Zeta Omega

SOUTH ATLANTIC REGION

Alpha Alpha Epsilon Omega
Alpha Alpha Pi Omega
Beta Zeta Omega
Chi Psi Omega
Chi Tau Omega
Chi Upsilon Omega
Delta Omicron Omega
Epsilon Beta Omega
Epsilon Omega Omega
Eta Alpha Omega
Eta Mu
Gamma Nu Omega
Gamma Rho Omega
Gamma Theta Omega
Gamma Xi Omega
Iota Omega Omega
Kappa Kappa Omega
Kappa Omega
Kappa Omicron Omega
Kappa Upsilon Omega
Lambda Epsilon Omega
Lambda Iota Omega
Lambda Omicron Omega
Nu Alpha Omega
Nu Delta Omega
Nu Lambda Omega
Nu Tau Omega

Nu Upsilon Omega
Omega Phi Omega
Omicron Kappa Omega
Omicron Omicron Omega
Omicron Rho Omega
Phi Phi Omega
Phi Pi Omega
Pi Alpha Omega
Pi Delta Omega
Pi Eta Omega
Psi Alpha Omega
Psi Omega Omega
Rho Sigma Omega
Rho Zeta Omega
Sigma Epsilon Omega
Sigma Omicron Omega
Tau Epsilon Omega
Tau Pi Omega
Theta Omicron Omega
Theta Xi Omega
Upsilon Alpha Omega
Upsilon Xi Omega
Xi Beta Omega
Zeta Rho Omega
Zeta Xi Omega

SOUTH CENTRAL REGION

Alpha Alpha Eta Omega
Alpha Alpha Nu Omega
Alpha Kappa Omega
Alpha Tau Omega
Alpha Xi Omega
Beta Mu Omega
Beta Psi Omega
Chi Omicron Omega
Chi Zeta Omega
Delta Omega Omega
Epsilon Lambda
Mu Kappa Omega
Mu Theta Omega
Omega Alpha Omega
Omicron Lambda Omega

Omicron Mu Omega
Omicron Tau Omega
Phi Xi Omega
Psi Mu Omega
Sigma Rho Omega
Tau Rho Omega
Upsilon Lambda Omega
Xi Alpha Omega
Xi Theta Omega

SOUTH EASTERN REGION

Alpha Alpha Gamma Omega
Alpha Alpha Zeta Omega
Beta Epsilon Omega
Beta Nu Omega
Beta Xi Omega
Eta Theta Omega
Eta Xi Omega
Gamma Alpha Omega
Iota Delta Omega
Kappa Lambda Omega
Mu Sigma Omega
Omicron Alpha Omega
Omicron Omega
Phi Lambda Omega
Upsilon Eta Omega
Upsilon Psi Omega

\$25 – \$999

CENTRAL REGION

Beta Gamma Omega
Beta Upsilon Omega
Chi Alpha Omega
Chi Sigma Omega
Delta Omicron
Epsilon Lambda Omega
Gamma Psi Omega
Lambda Mu Omega
Lambda Nu Omega
Nu Lambda
Omicron Alpha

Omicron Eta Omega
Omicron Xi
Pi Gamma Omega
Pi Nu
Tau Gamma Omega

FAR WESTERN REGION

Beta Theta
Epsilon Eta Omega
Eta Lambda
Eta Sigma
Iota Omicron Omega
Kappa Xi
Mu Iota
Pi Sigma Omega
Rho Upsilon Omega
Sigma Lambda Omega
Sigma Pi Omega
Tau Beta Omega
Tau Kappa
Tau Upsilon Omega
Theta Mu Omega
Xi Beta
Xi Kappa Omega
Xi Pi
Xi Psi Omega
Xi Upsilon

GREAT LAKES REGION

Alpha Lambda
Beta Lambda Omega
Beta Mu
Beta Tau Omega
Chi Epsilon Omega
Delta Chi
Delta Delta
Delta Phi
Delta Pi
Epsilon Chi
Epsilon Mu Omega
Iota Iota
Iota Rho
Iota Upsilon



Total **CHAPTER DONATIONS
RECEIVED DURING 2022**
\$655,985

Mu Alpha Omega
Mu Phi
Nu
Nu Psi Omega
Nu Theta
Omega
Omicron
Omicron Beta
Omicron Nu Omega
Psi Kappa Omega
Rho Omega
Sigma Mu Omega
Tau Lambda Omega
Theta Tau
Xi Phi
Zeta Beta Omega

INTERNATIONAL REGION

Rho Nu Omega
Rho Omicron
Sigma Theta Omega

MID-ATLANTIC REGION

Alpha Alpha Chi Omega
Alpha Chi
Alpha Eta
Alpha Phi
Alpha Xi
Beta Chi Omega
Beta Rho
Chi Beta Omega

Chi Iota Omega
Delta Alpha
Epsilon Phi Omega
Eta Omicron Omega
Gamma Beta Omega
Gamma Delta
Gamma Gamma Omega
Gamma Iota Omega
Gamma Lambda
Gamma Lambda Omega
Gamma Theta
Iota Mu
Kappa Delta Omega
Kappa Gamma
Kappa Iota Omega
Kappa Rho Omega
Lambda Chi
Lambda Delta Omega
Lambda Gamma Omega
Lambda Lambda Omega
Lambda Upsilon Omega
Nu Chi
Nu Chi Omega
Nu Epsilon
Nu Eta Omega
Nu Rho
Omega Kappa Omega
Omega Rho Omega
Omega Sigma Omega
Omicron Epsilon
Omicron Phi

Omicron Psi Omega
Omicron Sigma
Phi Chi Omega
Pi Epsilon Omega
Pi Omicron Omega
Psi Gamma Omega
Psi Rho Omega
Psi Sigma Omega
Rho Mu
Rho Omega Omega
Rho Tau Omega
Sigma Alpha
Sigma Kappa Omega
Sigma Mu
Sigma Nu Omega
Sigma Psi
Tau Beta
Tau Gamma
Tau Mu Omega
Tau Omega Omega
Theta Kappa
Theta Rho
Upsilon Beta
Upsilon Kappa Omega
Upsilon Omicron Omega
Xi Rho Omega
Zeta Epsilon Omega

MID-WESTERN REGION

Alpha Alpha Alpha Omega
Alpha Iota Omega
Beta Kappa Omega
Delta
Delta Epsilon Omega
Epsilon Alpha
Epsilon Theta
Iota Beta Omega
Pi Xi
Rho Alpha
Rho Iota
Tau Psi Omega
Theta Beta

Theta Xi
Upsilon Rho Omega
Upsilon Theta Omega

NORTH ATLANTIC REGION

Alpha
Alpha Alpha Mu Omega
Alpha Alpha Tau Omega
Alpha Beta Gamma Omega
Alpha Delta
Alpha Mu
Alpha Omicron
Beta Iota
Beta Lambda
Delta Iota
Delta Lambda
Delta Mu
Delta Pi Omega
Delta Rho Omega
Epsilon
Epsilon Nu
Gamma Epsilon
Gamma Zeta
Iota Alpha Omega
Iota Epsilon Omega
Iota Gamma
Lambda Gamma
Lambda Omega Omega
Lambda Rho
Lambda Zeta
Mu Chi
Nu Eta
Nu Kappa
Omega Eta Omega
Omega Pi Omega
Omicron Pi
Phi Eta Omega
Pi Chi
Pi Epsilon
Pi Kappa
Pi Mu Omega
Pi Phi Omega



Pi Pi Omega
Pi Psi Omega
Pi Xi Omega
Psi Phi Omega
Rho Epsilon Omega
Rho Upsilon
Tau Sigma
Tau Theta
Tau Xi Omega
Theta Epsilon Omega
Theta Nu
Theta Omega Omega
Theta Phi Omega
Theta Tau Omega
Upsilon Gamma
Upsilon Theta
Xi Delta Omega
Xi Nu
Xi Omicron
Xi Tau
Xi Xi Omega
Zeta Sigma

SOUTH ATLANTIC REGION

Alpha Alpha Phi Omega
Alpha Alpha Upsilon Omega
Alpha Beta
Beta Sigma
Chi Lambda Omega
Chi Pi Omega
Delta Eta
Epsilon Tau Omega
Eta Iota
Eta Nu
Eta Tau Omega
Gamma Nu

Gamma Pi Omega
Gamma Sigma
Iota Lambda
Iota Nu
Iota Omicron
Iota Psi Omega
Iota Theta Omega
Iota Upsilon Omega
Kappa Eta
Kappa Sigma Omega
Kappa Upsilon
Lambda Lambda
Lambda Theta
Mu
Mu Phi Omega
Mu Rho Omega
Mu Zeta
Nu Alpha
Nu Beta
Nu Gamma
Nu Omega Omega
Nu Theta Omega
Omega Omega Omega
Omicron Delta
Phi Delta Omega
Phi Omega Omega
Pi Beta Omega
Pi Phi
Pi Zeta Omega
Psi Pi Omega
Rho Eta
Rho Pi
Rho Tau
Rho Zeta
Sigma Alpha Omega
Sigma Chi

Sigma Nu
Sigma Phi
Sigma Pi
Sigma Tau
Sigma Upsilon Omega
Sigma Xi
Tau Chi Omega
Tau Theta Omega
Theta Nu Omega
Upsilon Zeta
Xi Omega Omega
Xi Omicron Omega
Xi Pi Omega
Zeta Eta

SOUTH CENTRAL REGION

Alpha Alpha Omicron Omega
Alpha Alpha Rho Omega
Alpha Alpha Xi Omega
Beta Kappa
Beta Pi Omega
Delta Alpha Omega
Delta Xi
Epsilon Theta Omega
Epsilon Zeta Omega
Eta Chi Omega
Gamma Eta Omega
Gamma Omega Omega
Gamma Psi
Kappa Lambda
Lambda Omicron
Lambda Sigma Omega
Mu Chi Omega
Mu Mu Omega
Nu Gamma Omega
Omicron Gamma

Omicron Iota Omega
Phi Alpha Omega
Phi Sigma Omega
Pi Chi Omega
Rho Omicron Omega
Sigma Beta Omega
Sigma Kappa
Zeta Psi Omega

SOUTH EASTERN REGION

Beta Tau
Epsilon Epsilon
Iota Kappa
Iota Phi
Kappa Pi Omega
Lambda Eta Omega
Lambda Pi
Lambda Zeta Omega
Mu Epsilon
Nu Nu Omega
Nu Omicron
Nu Sigma Omega
Nu Xi
Omega Chi Omega
Omicron Beta Omega
Omicron Chi
Omicron Zeta
Phi Iota Omega
Pi Omega
Pi Omega Omega
Theta Sigma
Theta Zeta Omega
Upsilon Eta
Upsilon Upsilon Omega
Xi Alpha

Thank You to our Generous Donors!



Soaring in
Leadership

The Alpha Kappa Alpha Educational Advancement Foundation, Inc.® (EAF) is a 501(c)(3) organization, established by Alpha Kappa Alpha Sorority, Inc.® The Foundation and the Sorority share officers, elected by membership of the Sorority to serve 4-year terms.

2022–2024 Board of Directors

Danette Anthony Reed

President

Karla A. Hall

Treasurer

Jenell Ross

At-Large Director

Charletta Wilson Jacks

First Vice President

Mildred S. Carrethers

At-Large Director

Jacquelyn Lewis Young

AKA Executive Director

Alyse Guerrier

Second Vice President

Leslie F. Daniel

At-Large Director

Erika V. Everett

EAF Executive Director

Glenda Glover

Third Vice President

Lynn Farris

At-Large Director

Martha Perine Beard

Parliamentarian

Carolyn G. Randolph

Secretary

Jacquie Jordan

At-Large Director

Lorraine Griffin Johnson

Human Resources Committee Chairman

EAF's management consists of the volunteer Board of Directors and a paid professional staff. The board meets twice annually, to shape policy, develop fund-raising strategies and goals and oversee the award- and grant-making processes. Professional staff carries out policies established by the board.





Educational Advancement Foundation Staff

Erika V. Everett

Executive Director

Schoquilla "Que" Coleman

Program Coordinator

Rachel Dixon

Endowment Program Coordinator

Antoinette James

Cash Management Coordinator

Gregory Williams

Staff Accountant



2022-2024 Regional Coordinators

Arla J. Bentley

North Atlantic

Crystal D. Lander

Mid Atlantic

Crystal Pruitt

South Atlantic

Chiquita V. White

Great Lakes

Toni W. Franklin

South Eastern

Robyn S. McCormick

South Central

Deondra R. Wardelle

Central

April F. Sutherland

Mid-Western

Johari H. Leaks

Far Western

Marcelle G. Yhap

International

Total AMOUNT OF CONTRIBUTIONS
ACROSS ALL FUNDS
\$8,128,766







Promoting Lifelong Learning

ALPHA KAPPA ALPHA EDUCATIONAL ADVANCEMENT FOUNDATION, INC.®

 www.akaef.org

 5656 South Stony Island Avenue | Chicago, IL 60637-1906

 Office: **800-653-6528** (toll free) or **773-947-0026** | Fax: 773-947-0277

 facebook.com/Alpha-Kappa-Alpha-Educational-Advancement-Foundation-Inc

 twitter.com/akaef  instagram.com/akaef