



Anystis baccharum

Anystis baccharum also known as the Crazee Mite or Whirligig mite, are cosmopolitan predatory mites.

They primarily feeds on foliar pests such as thrips, aphids, and spider mites, but they also feed on echinothrips, psyllids, whitefly, and European red mite.

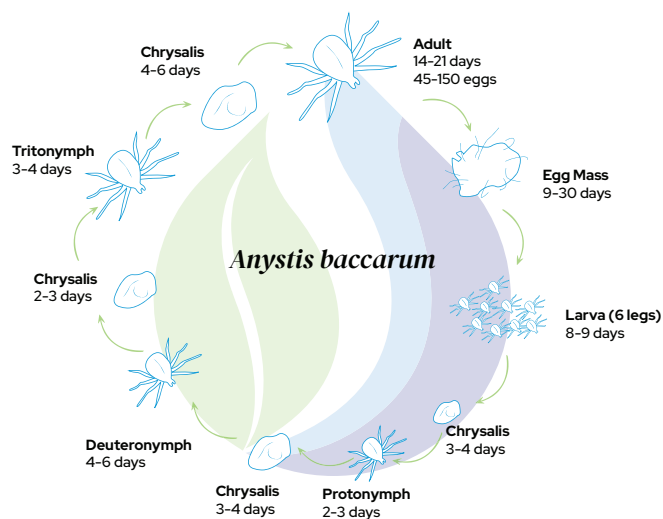
They are approximately twice the size of adult *Phytoseiulus persimilis* and highly fast and mobile.

They can self-distribute between plants and cross over non-organic surfaces, and they are strong enough to walk through webbing and sticky surfaces, like trichomes.

Therefore, they are a well-suited predator for both indoor and outdoor crop applications.

Life Cycle

- Optimum conditions: temperature of 25°C and a relative humidity of 60%.
- Development time: 3 - 4 weeks from egg to adult. Adult life is 3 weeks.
- All stages ate predatory, and all mites are female.
- Egg laying: 45 - 150 over 3 weeks. Eggs are laid in clusters of 15 - 30 in loose growing media.



Introduction Rate

Introduction	Rate	Area	Frequency	Duration
preventive	2.5	per m ²	1 - 2 introductions or as needed	per season or as needed
hot spot	10	per m ²	1 - 2 introductions or as needed	per season or as needed