

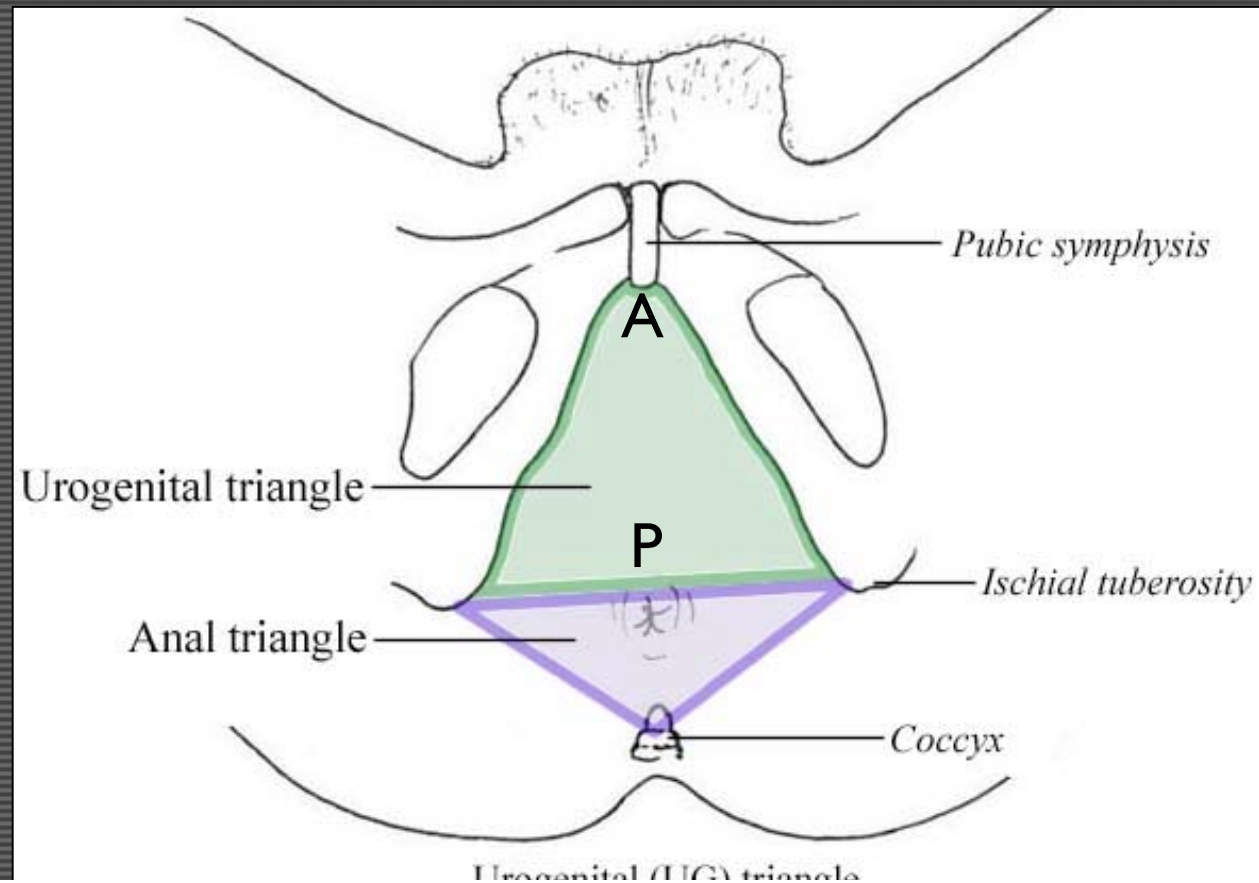
G13: Urogenital (UG) Triangle

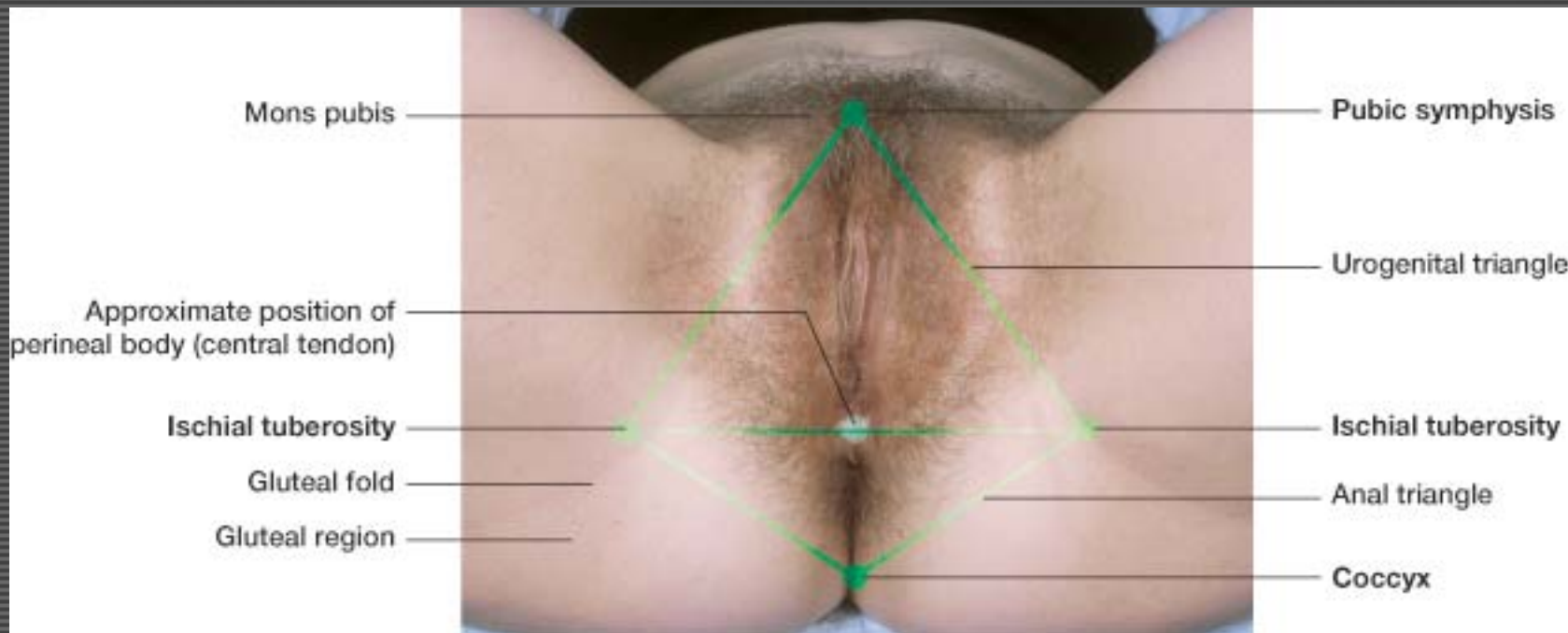
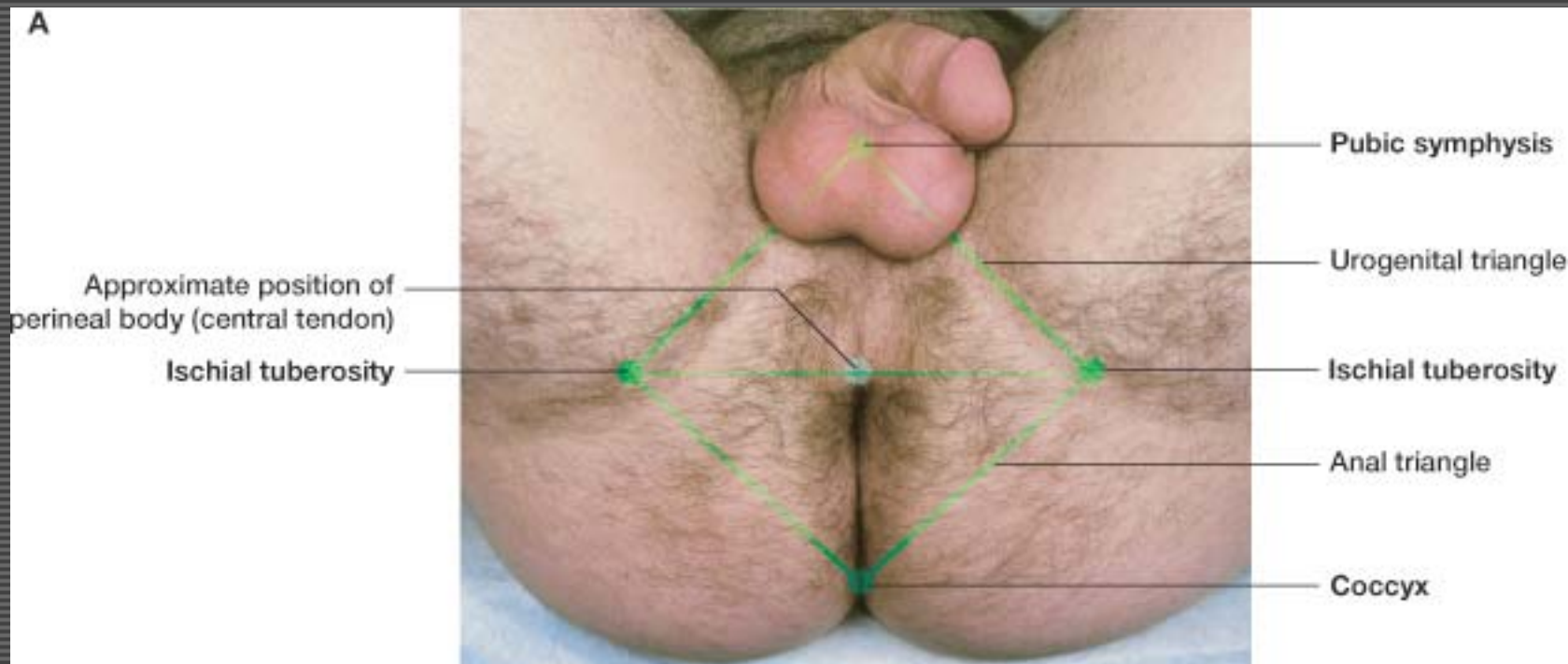


Syllabus - Pg. 3

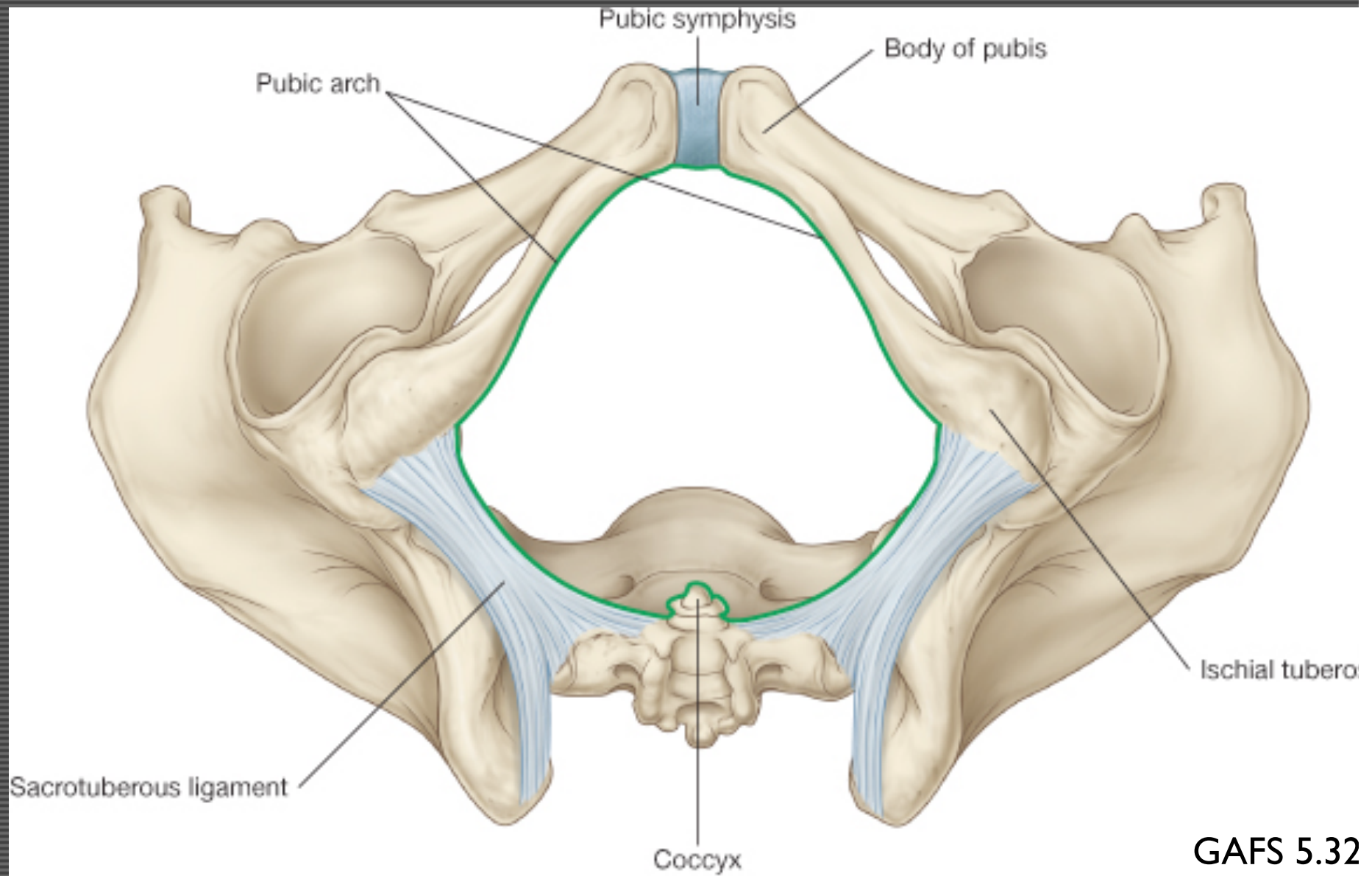
1) UG Triangle - a) Overview

- Anterior half of the perineum
- Contains roots of external genitalia and openings of the urogenital system



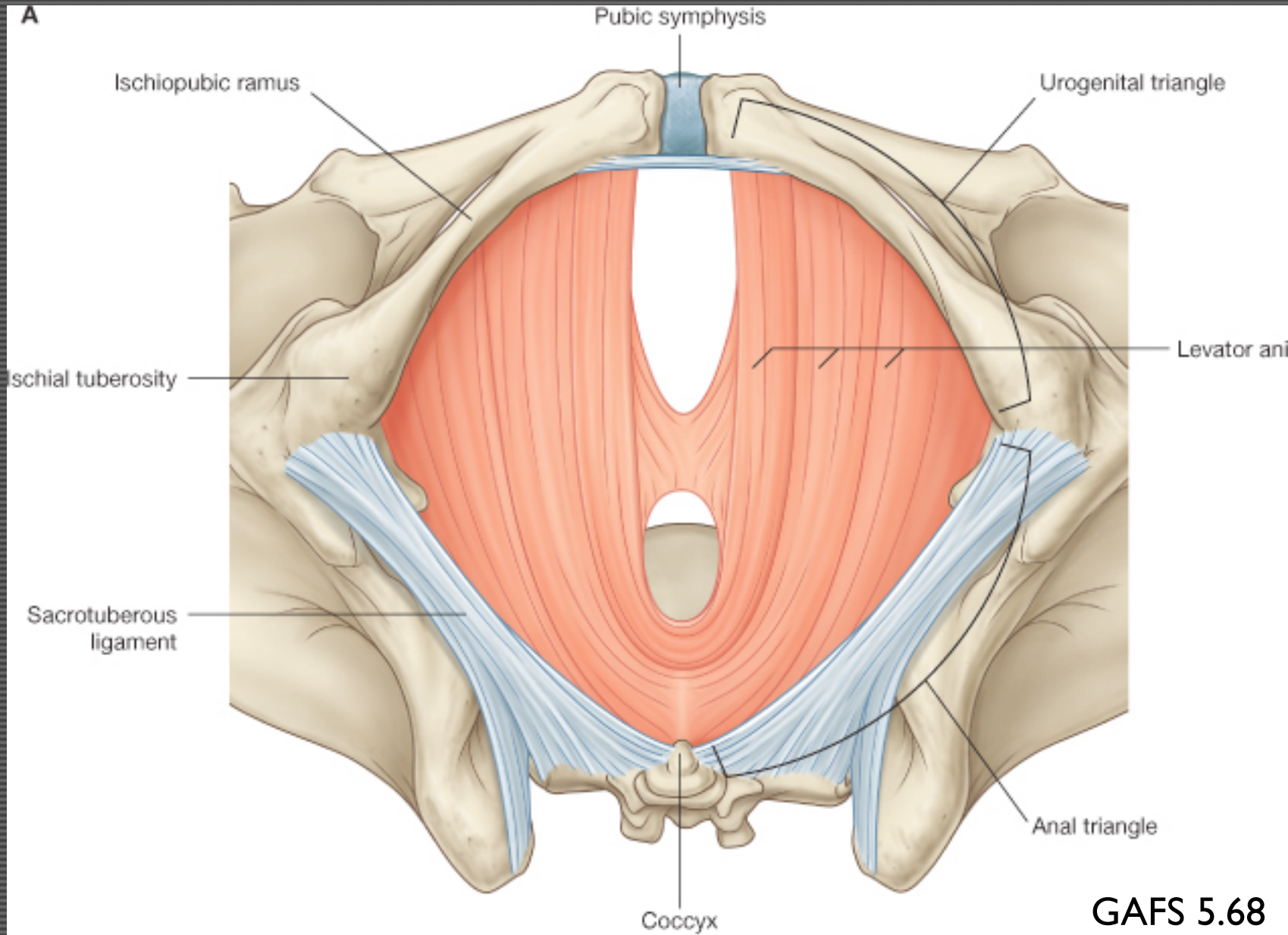


Pelvis - Inferior view

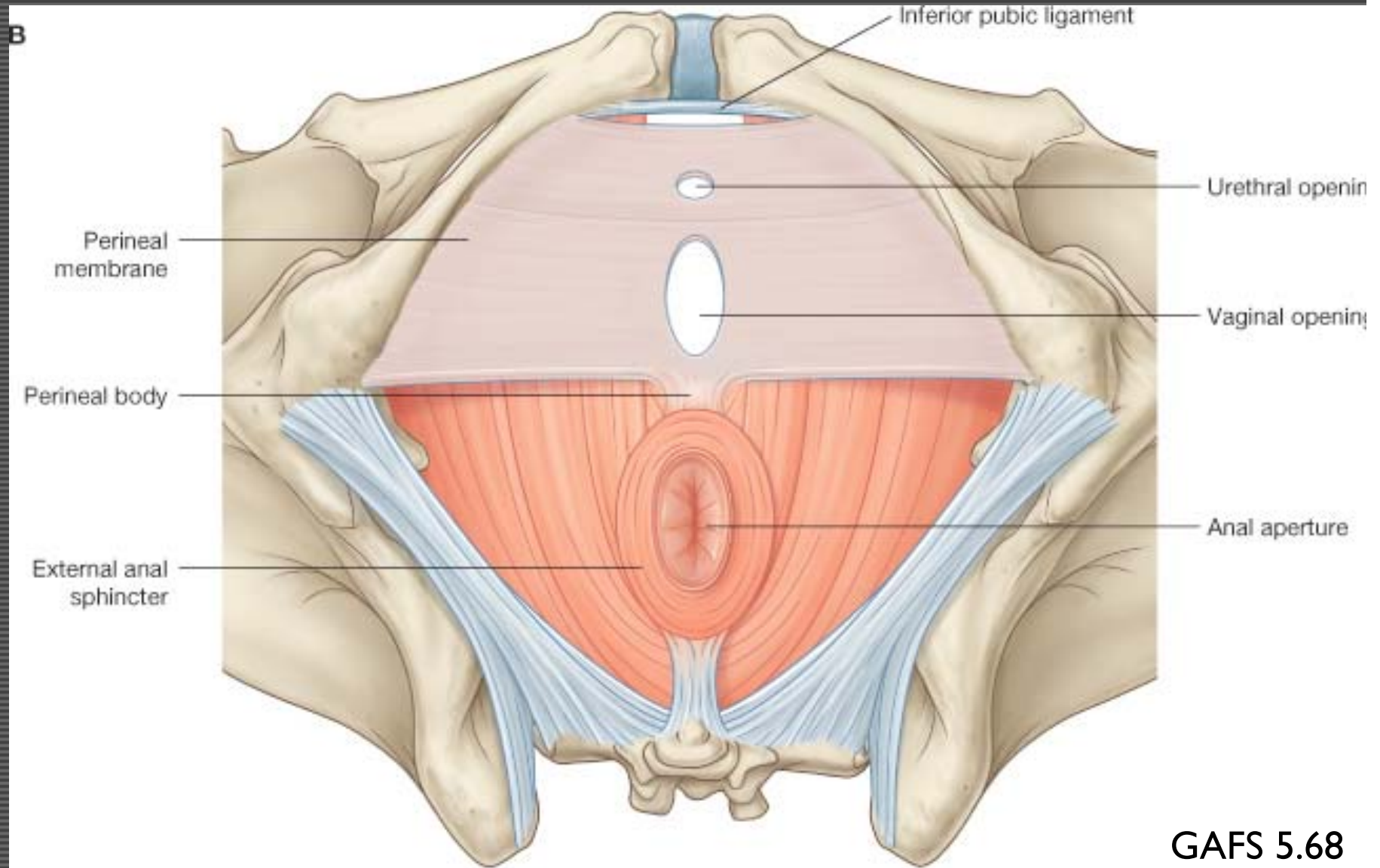


GAFS 5.32

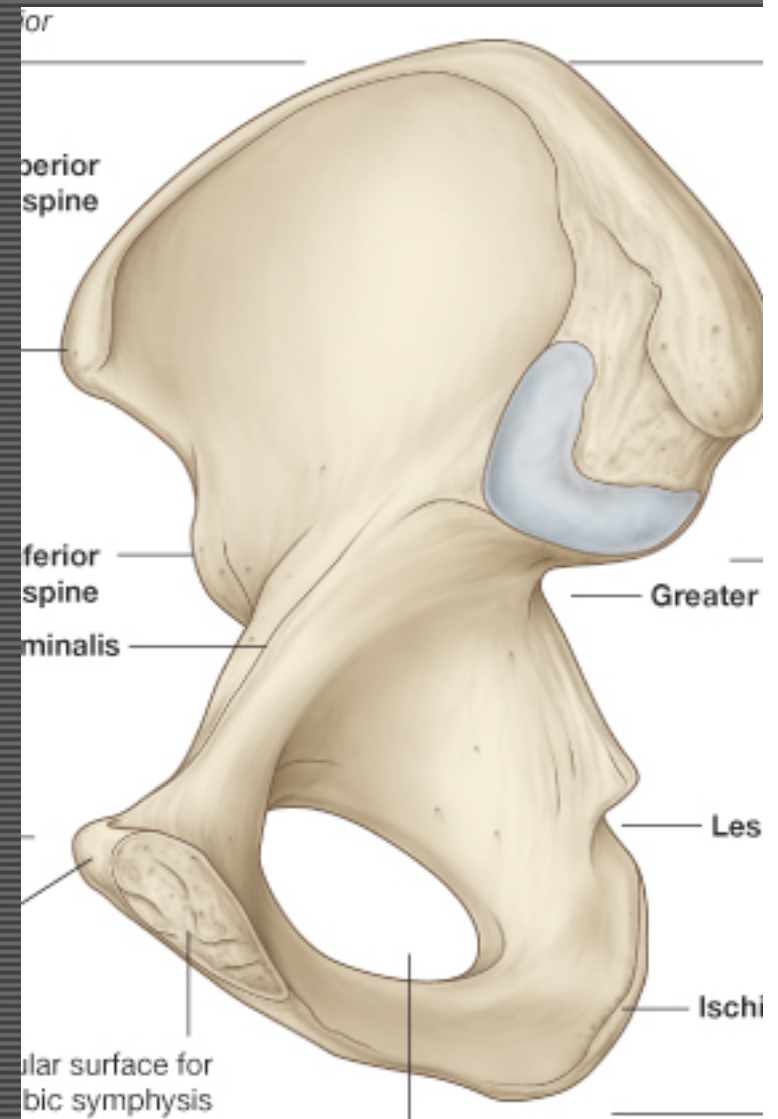
Levator ani m./Pelvic diaphragm



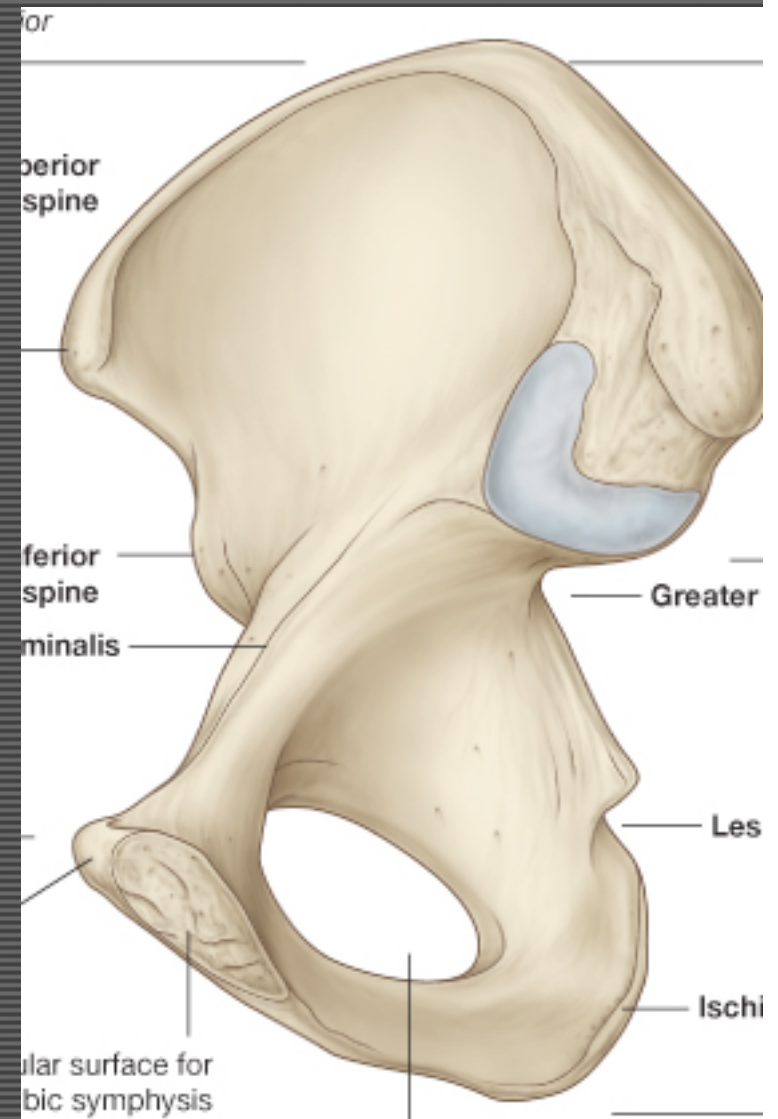
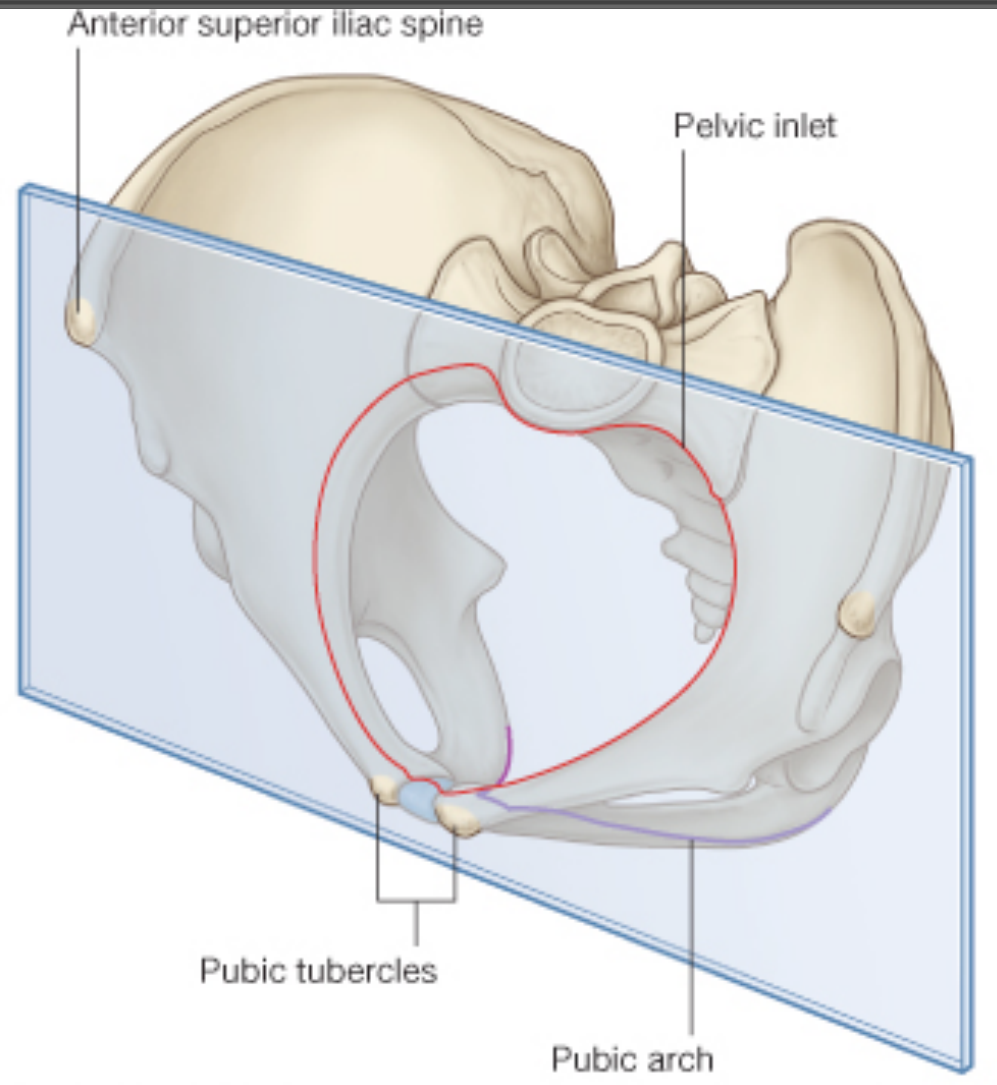
UG Triangle - Boundaries



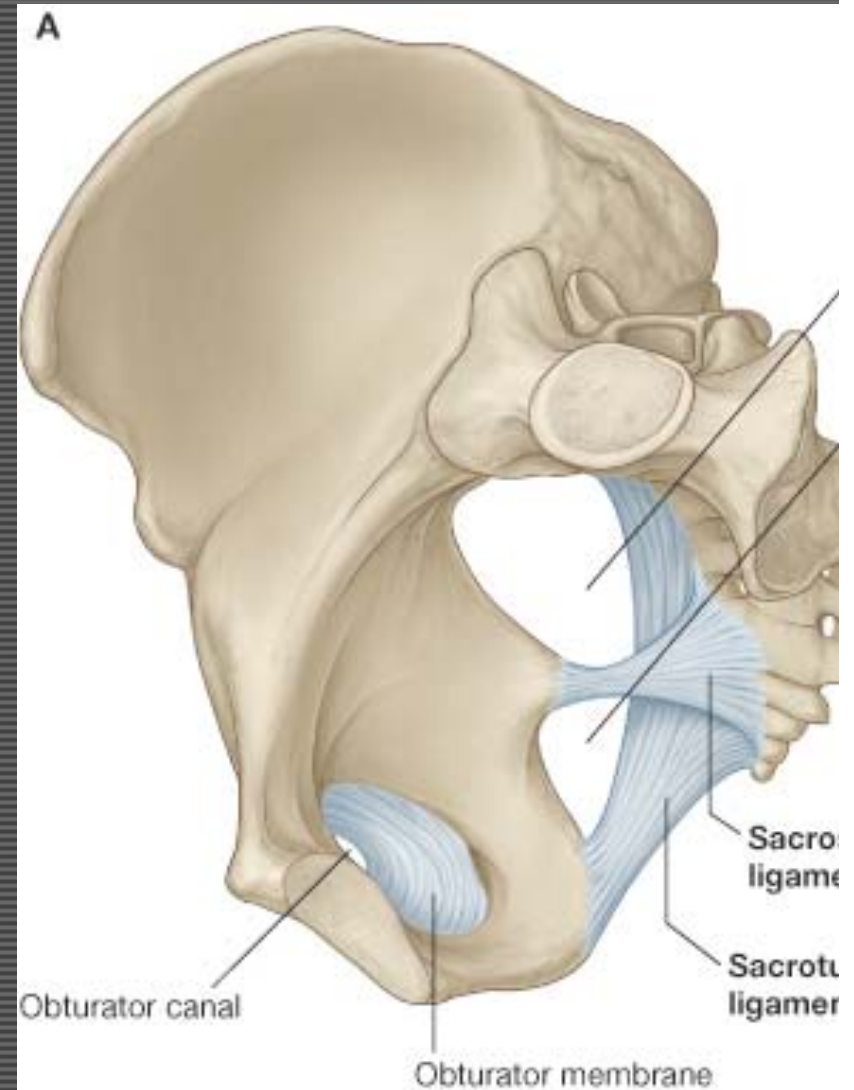
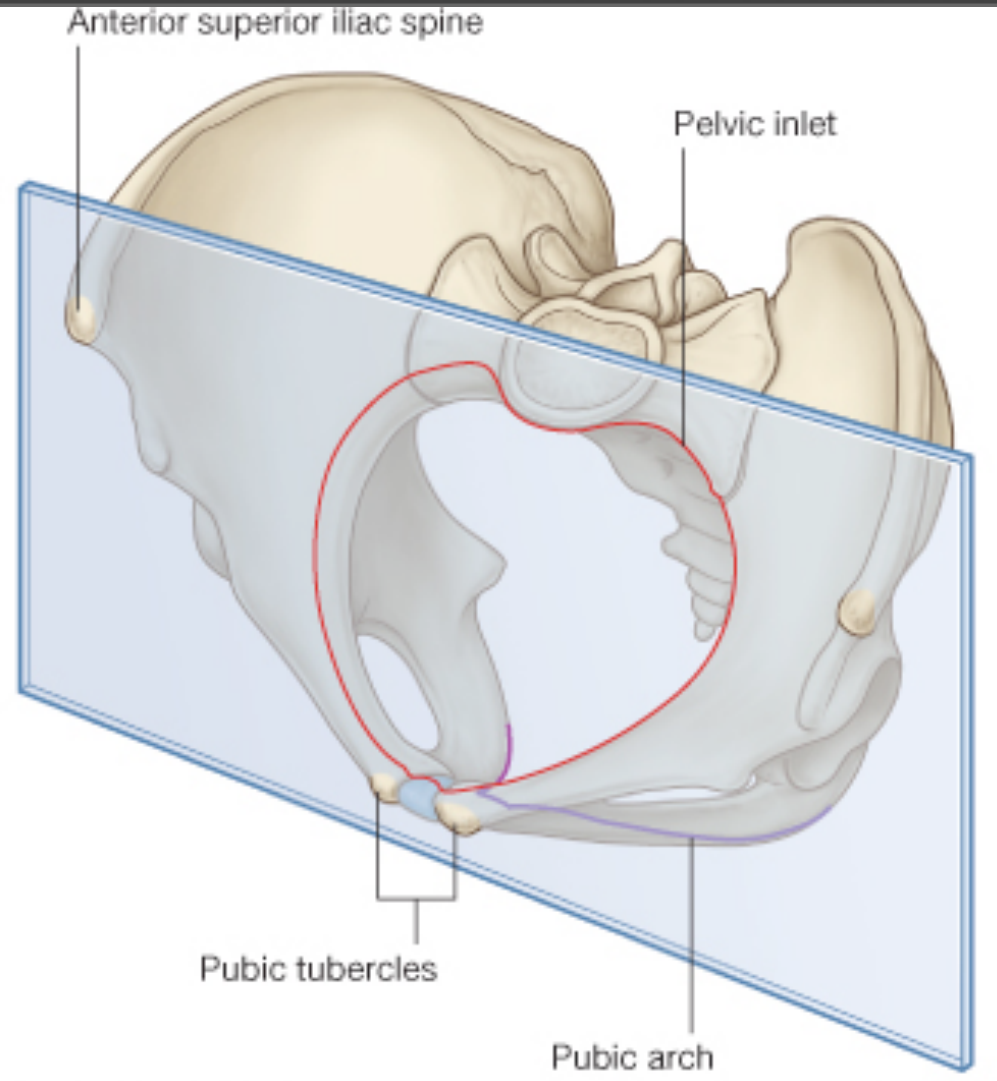
UG Triangle - Orientation



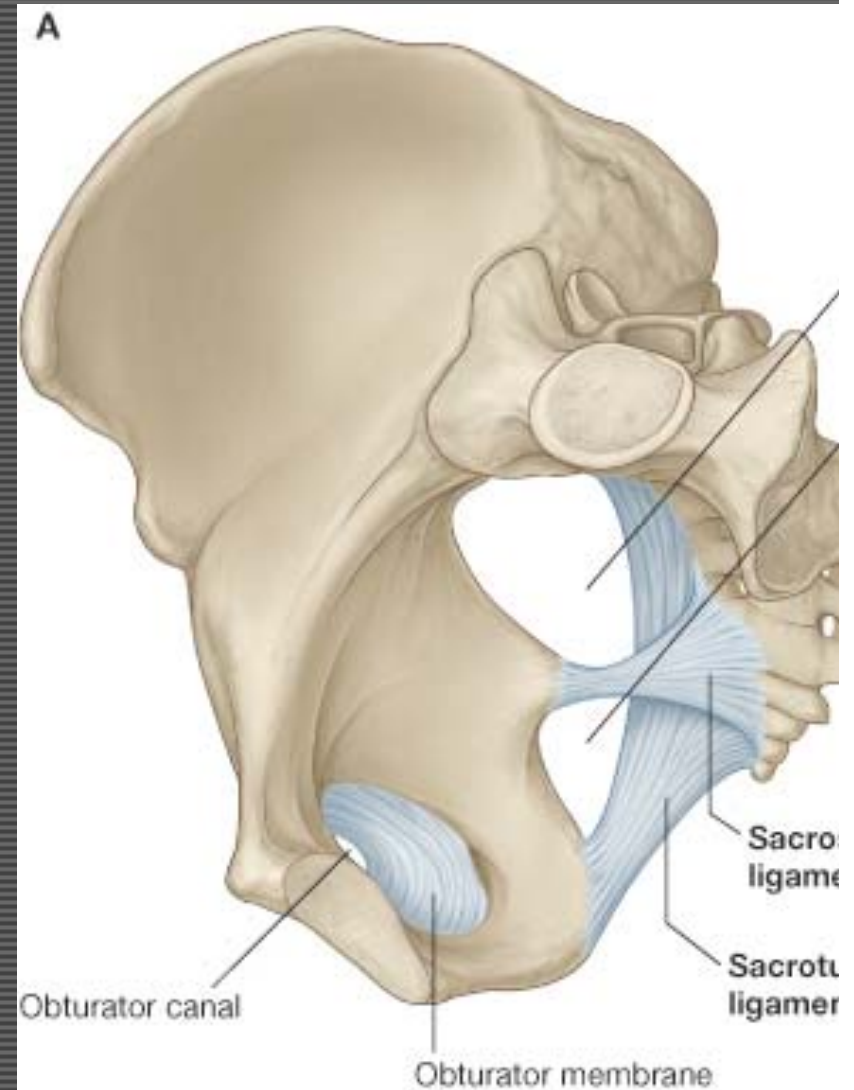
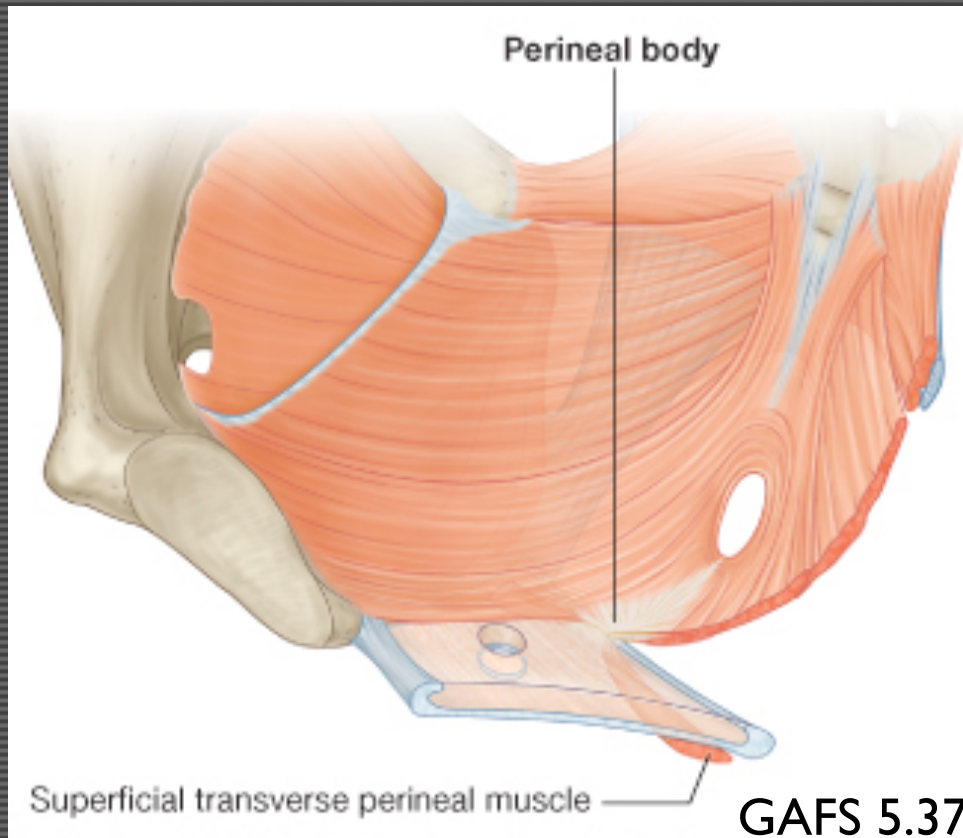
UG Triangle - Orientation



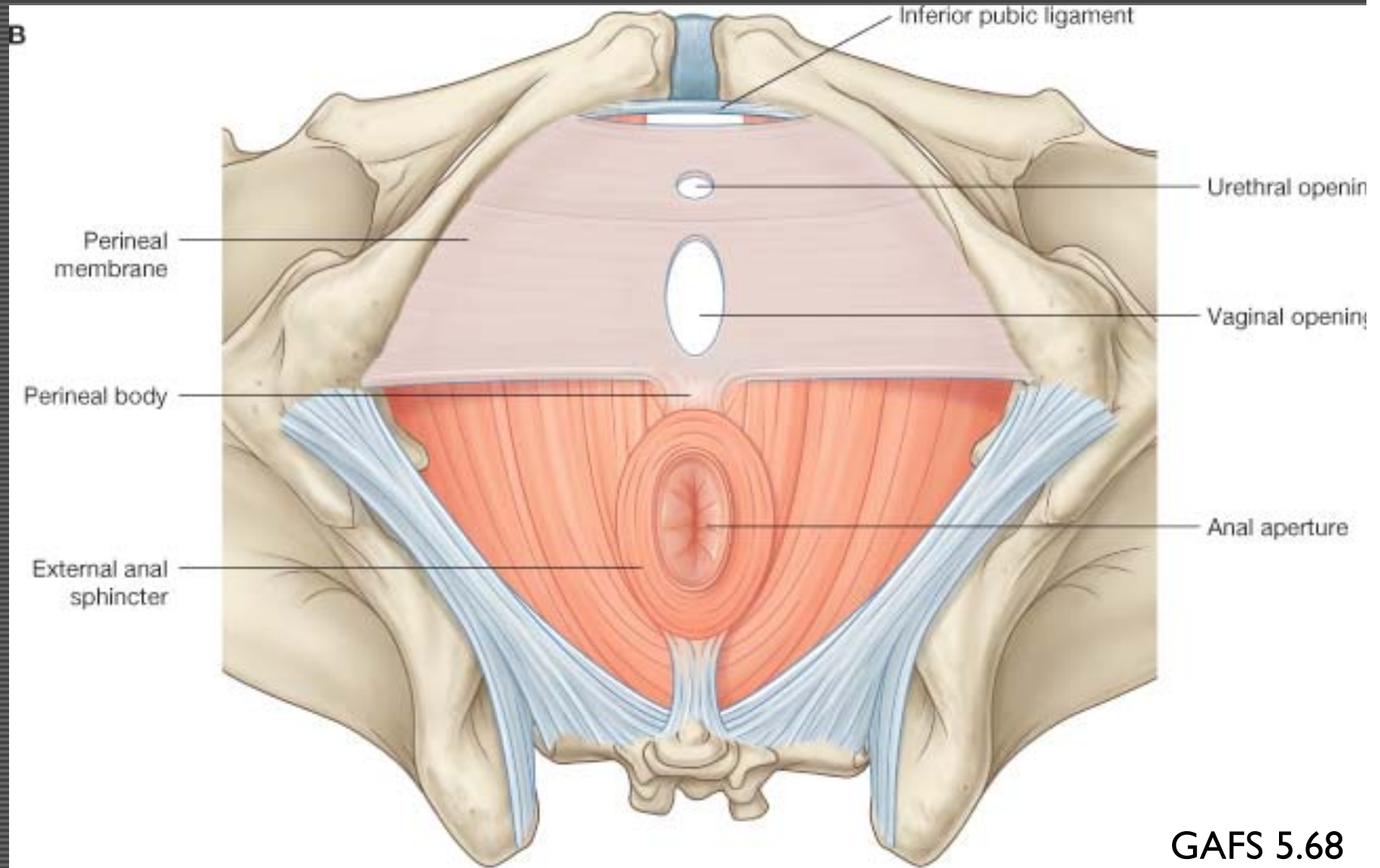
UG Triangle - Orientation



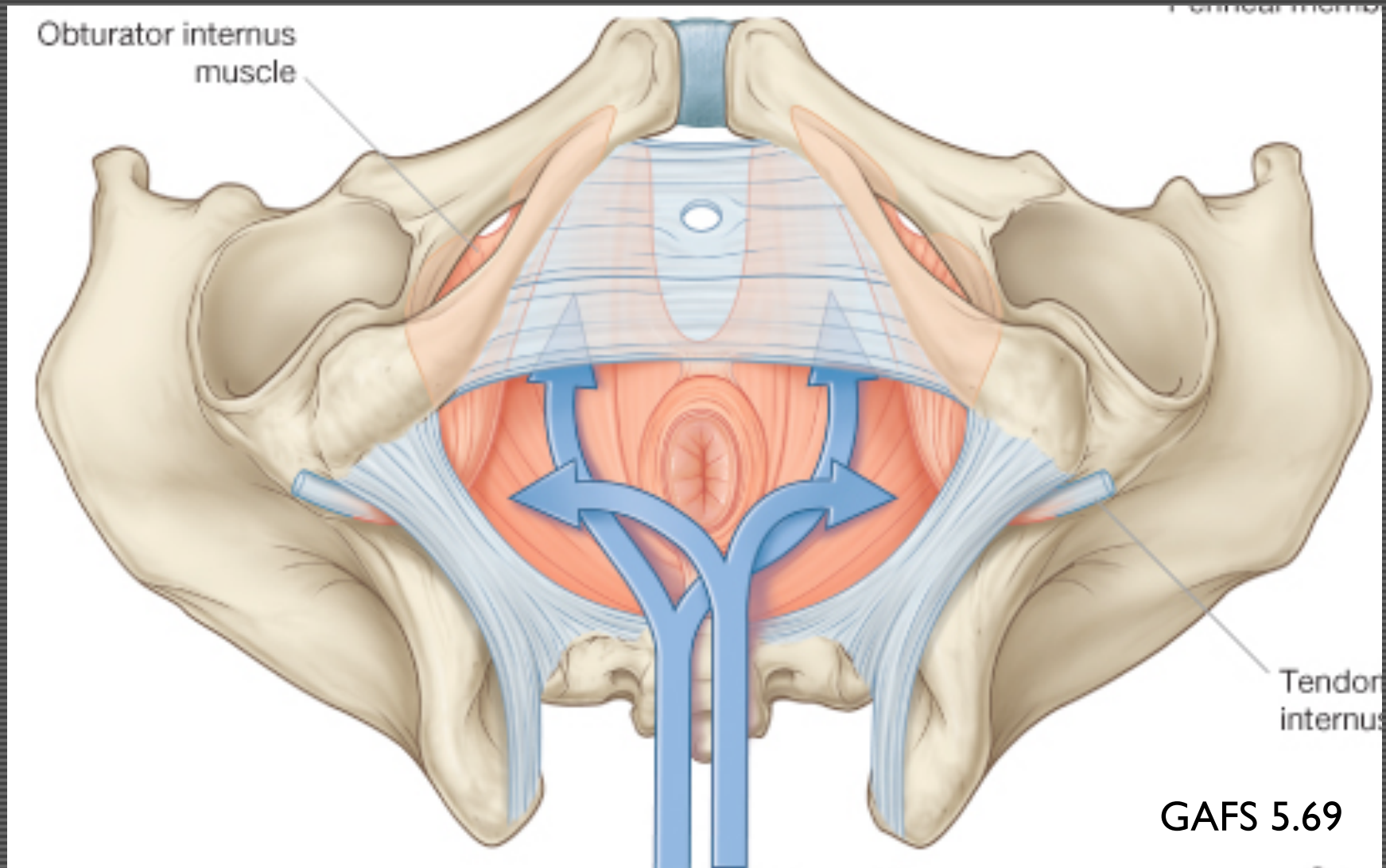
UG Triangle - Orientation



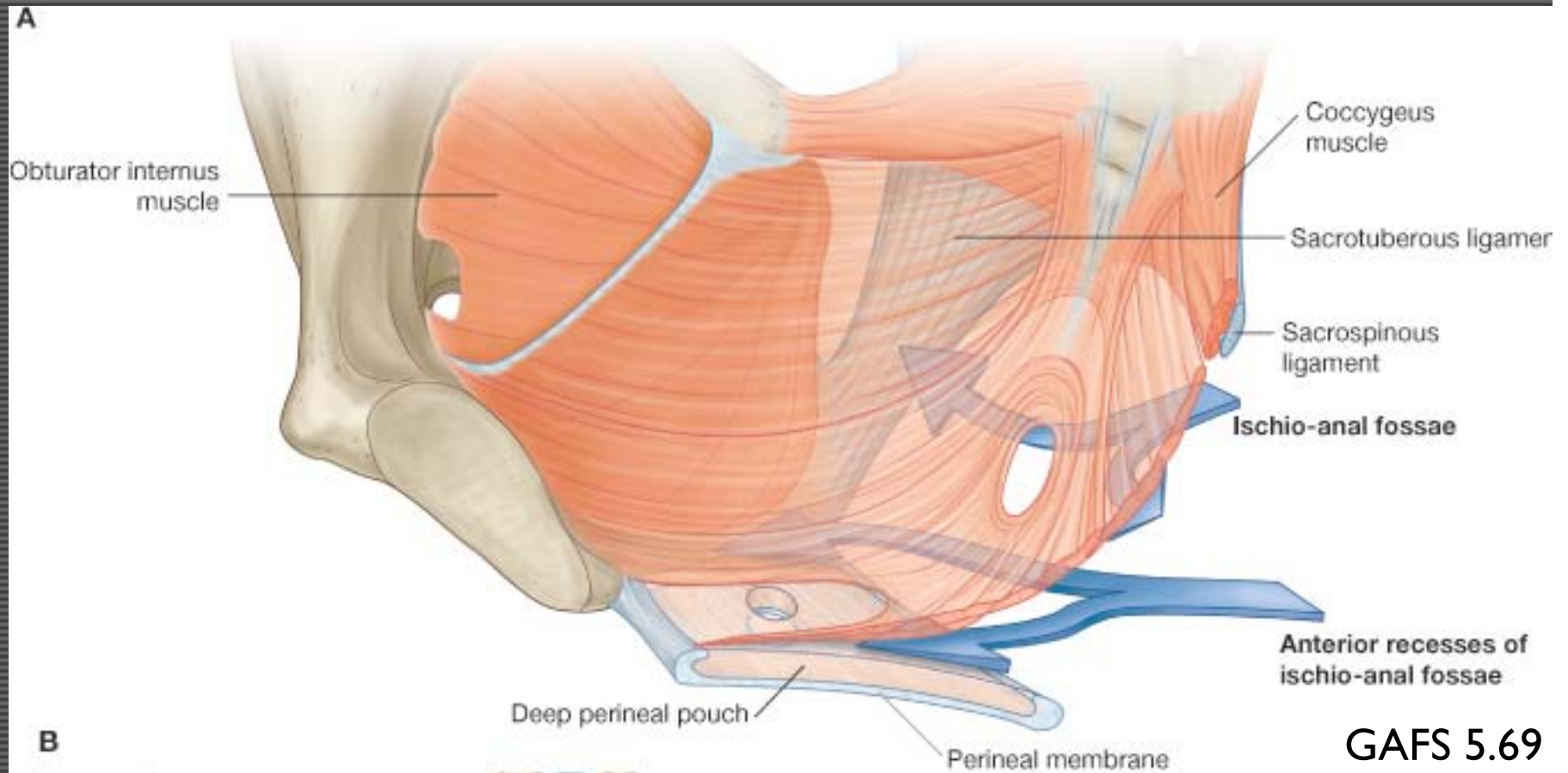
UG Triangle - Boundaries



UG Triangle - Boundaries

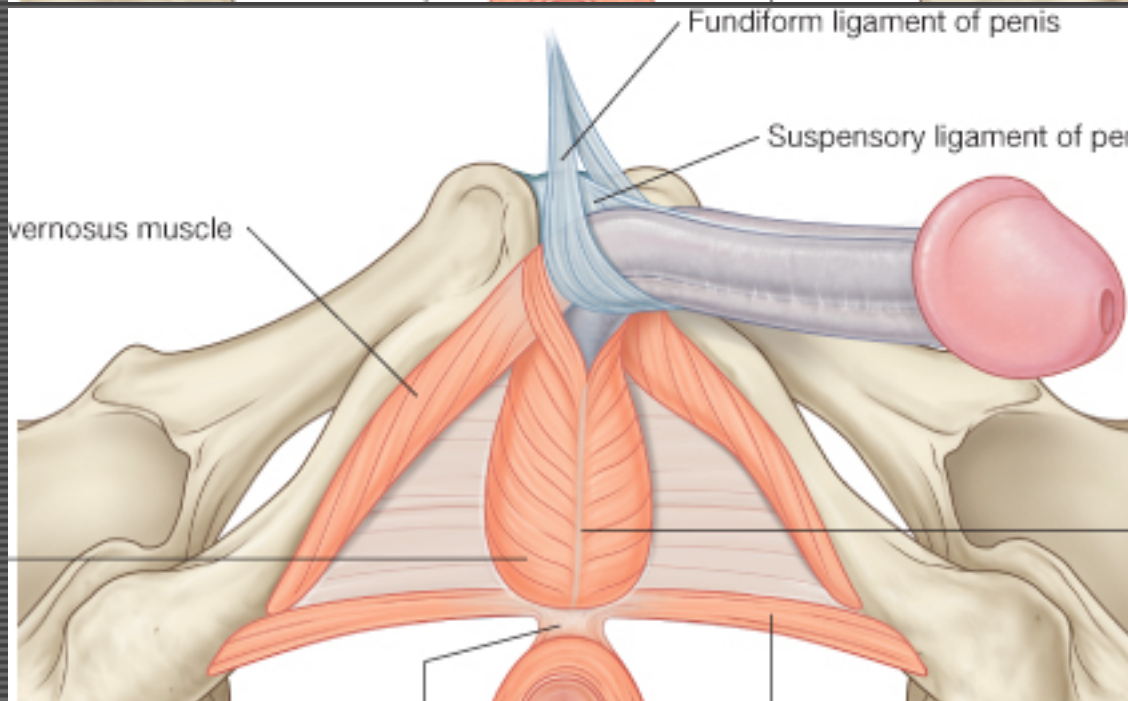
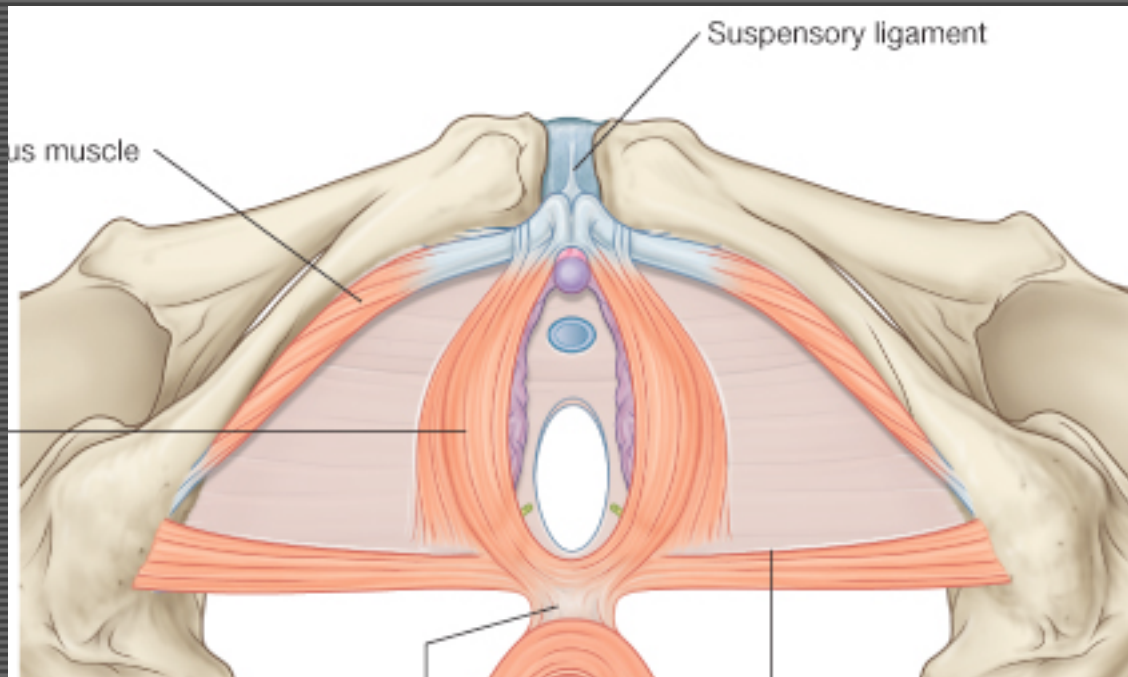


UG Triangle - Boundaries



GAFS 5.69

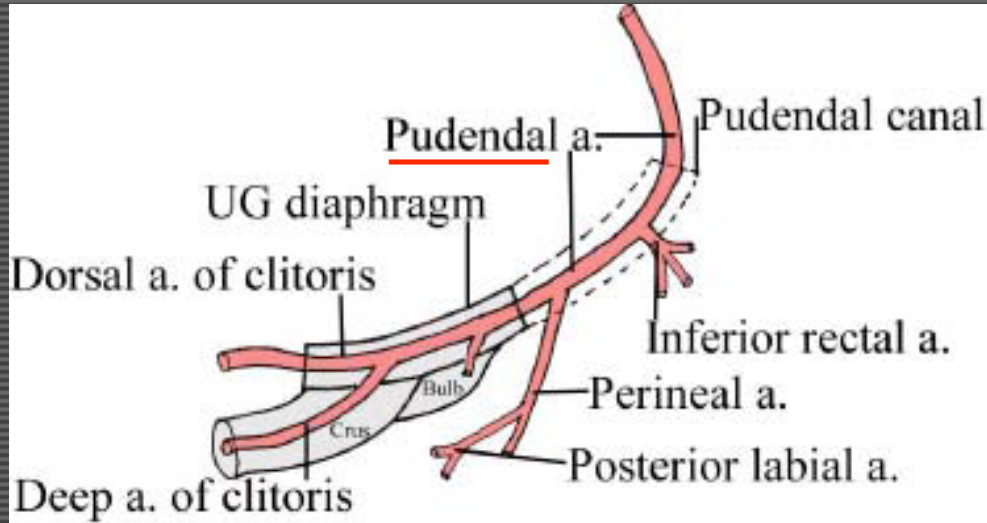
Function



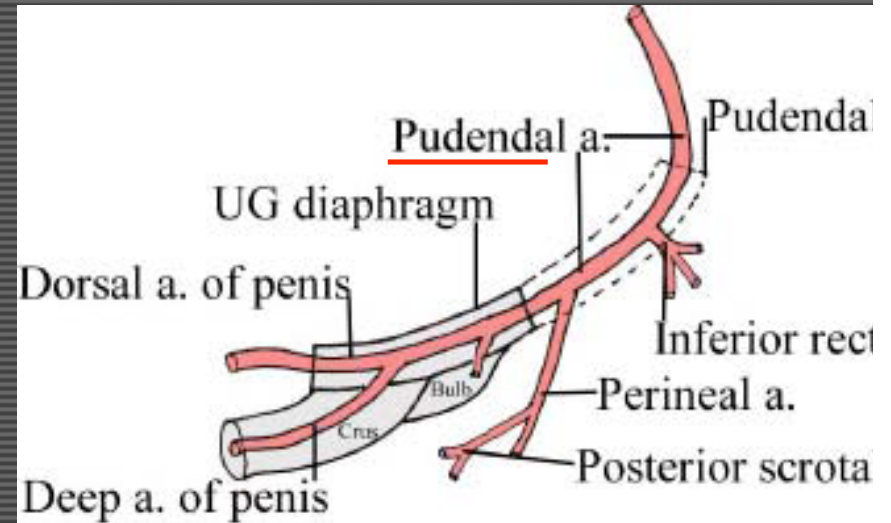
GAFS 5.72

1) UG Triangle - b) Vasculature

Female

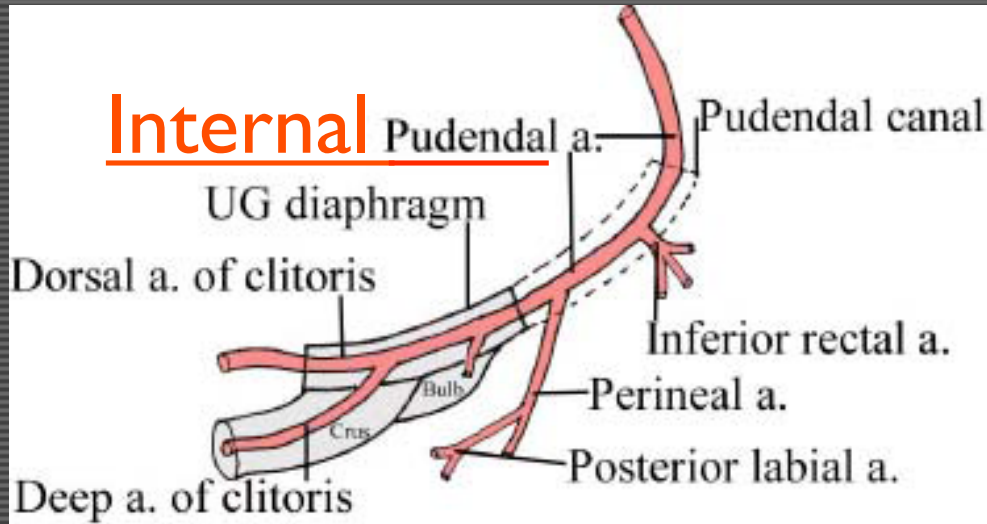


Male

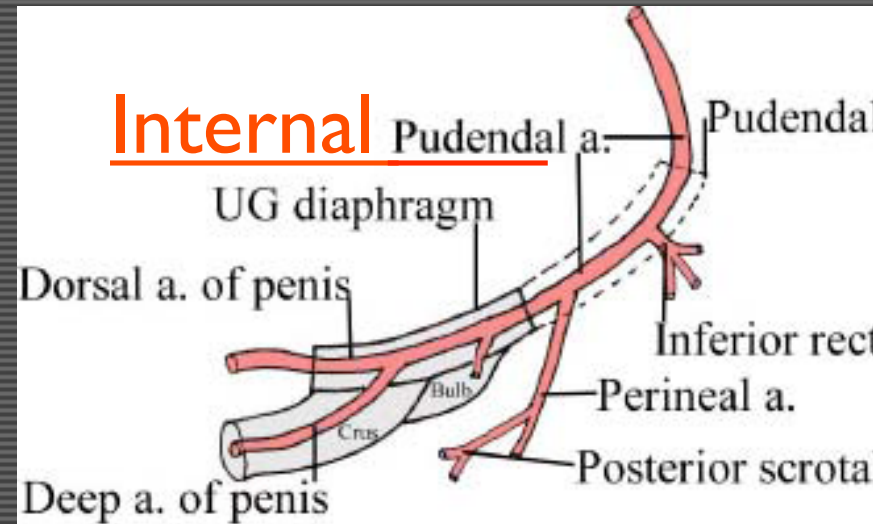


1) UG Triangle - b) Vasculature

Female

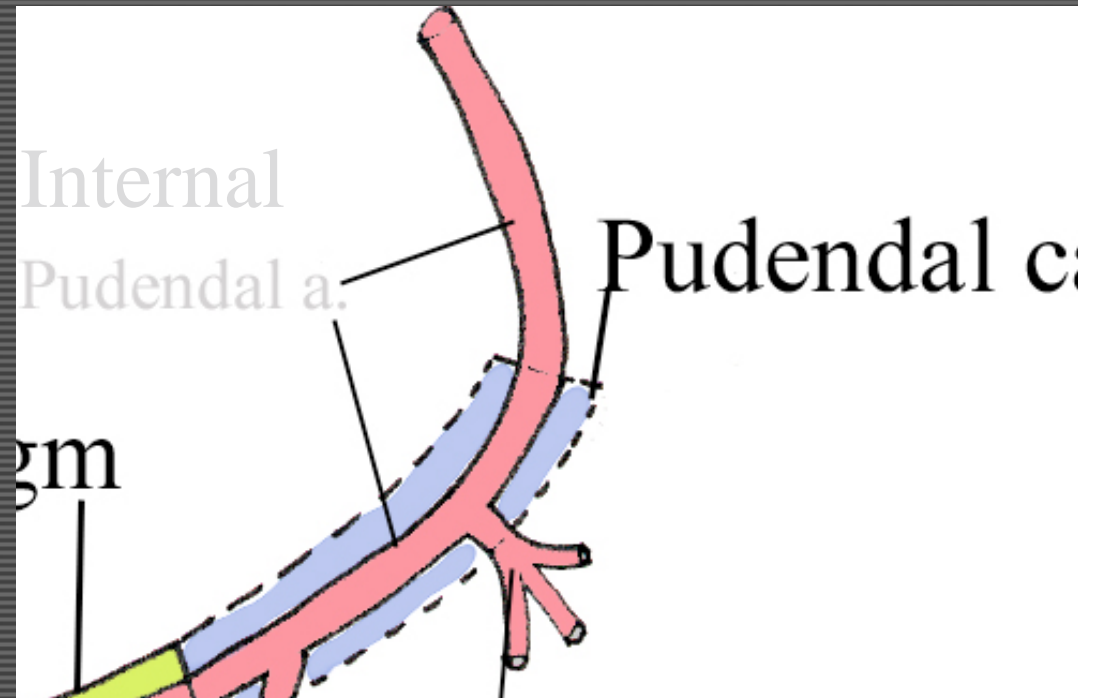


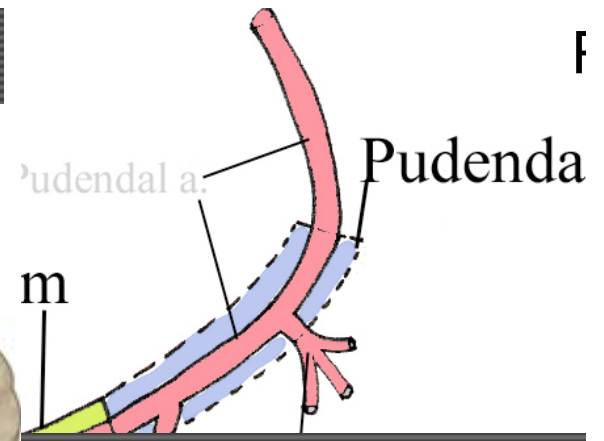
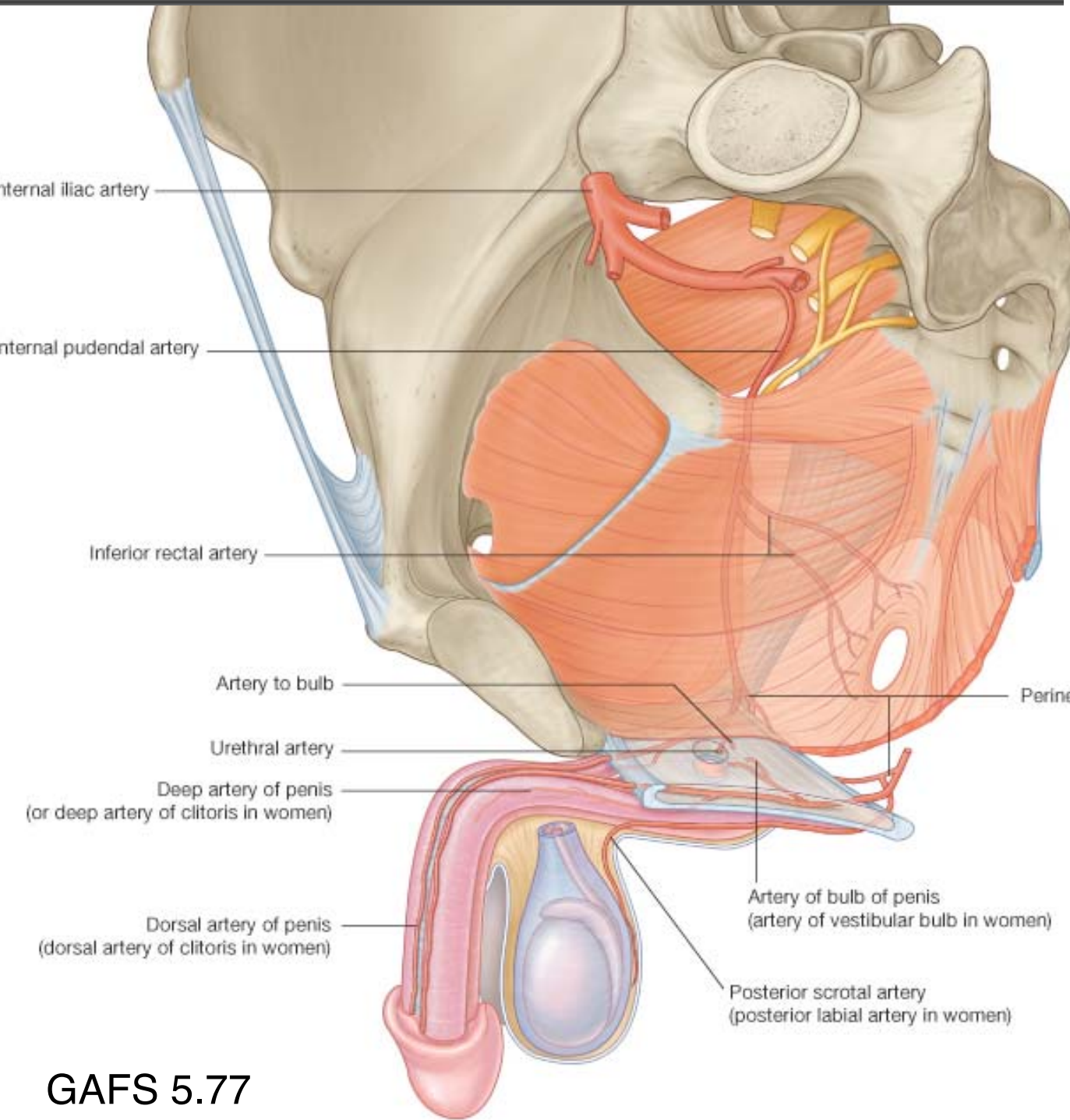
Male



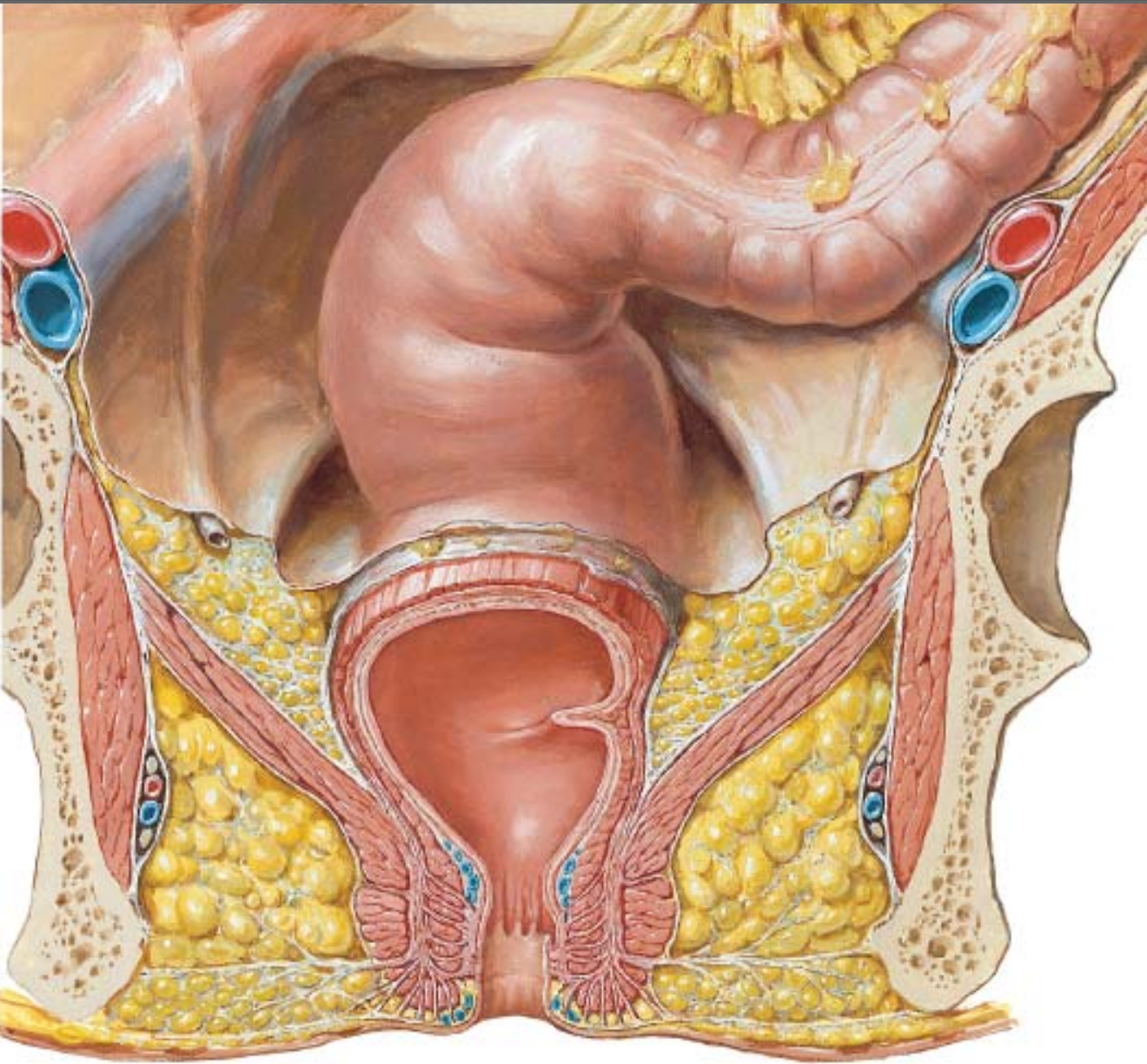
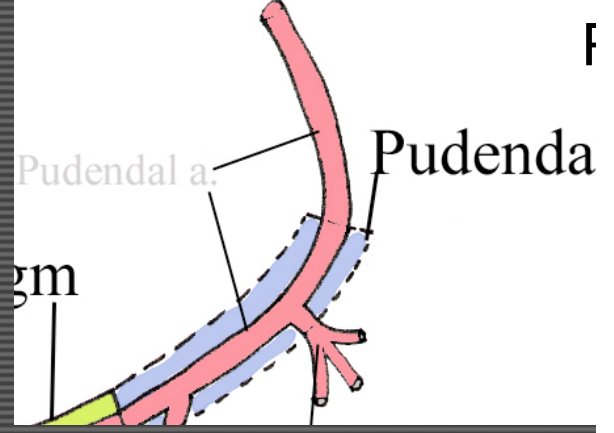
1) UG Triangle - b) Vasculature

Male



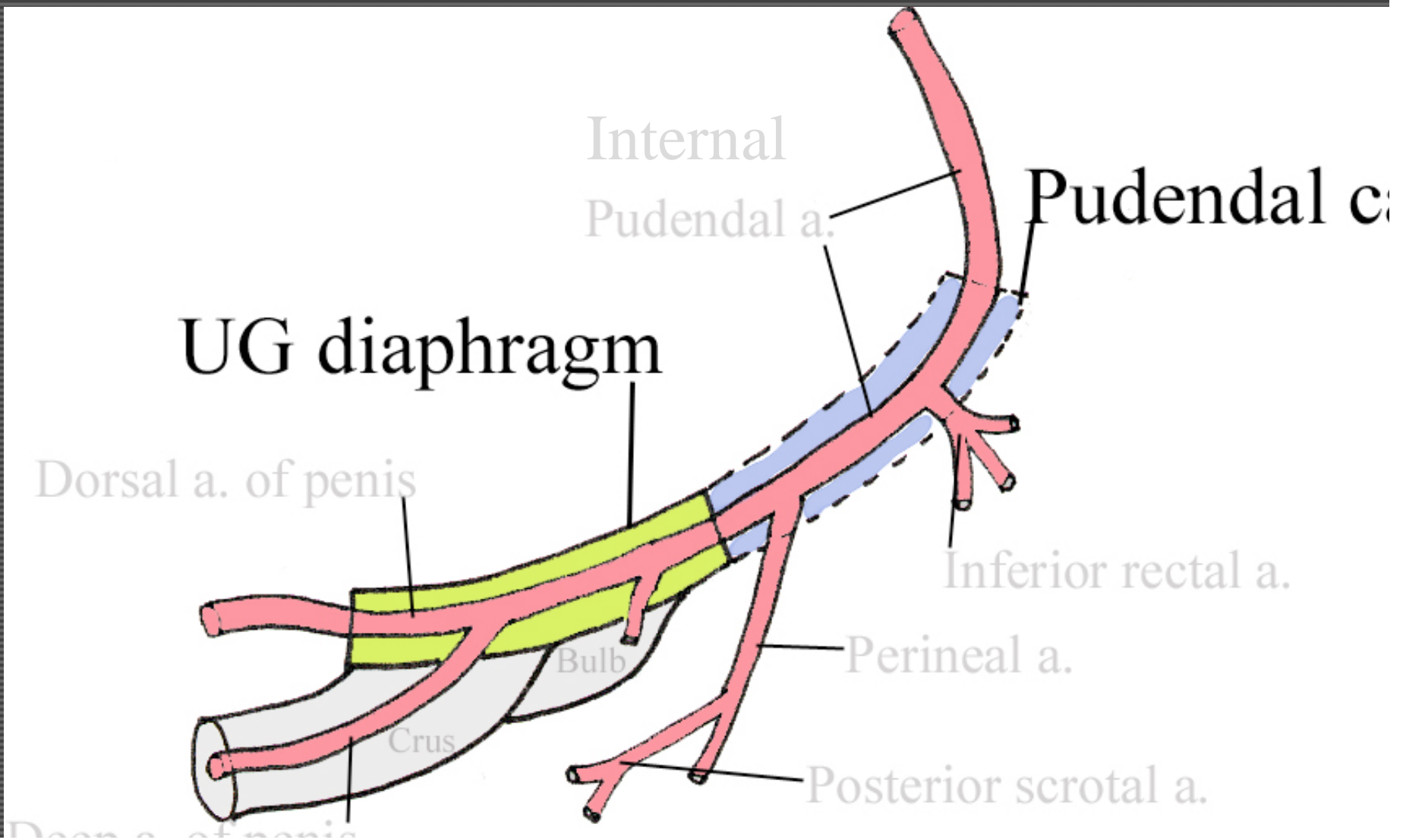


GAFS 5.77



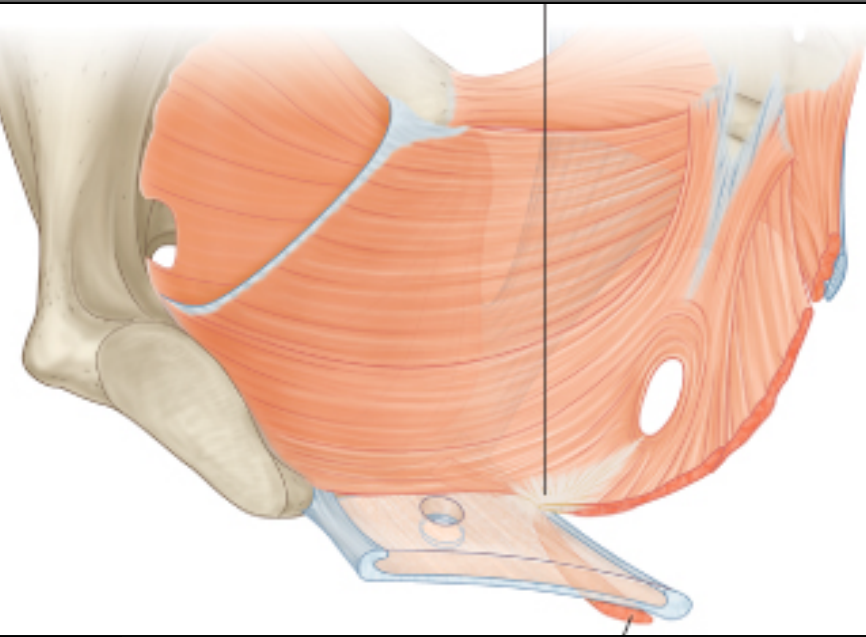
1) UG Triangle - b) Vasculature

Male



1) UG Triangle - b) Vasculature

Male



UG diaphragm

Dorsal a. of penis

Pudendal a.

Pudendal c.

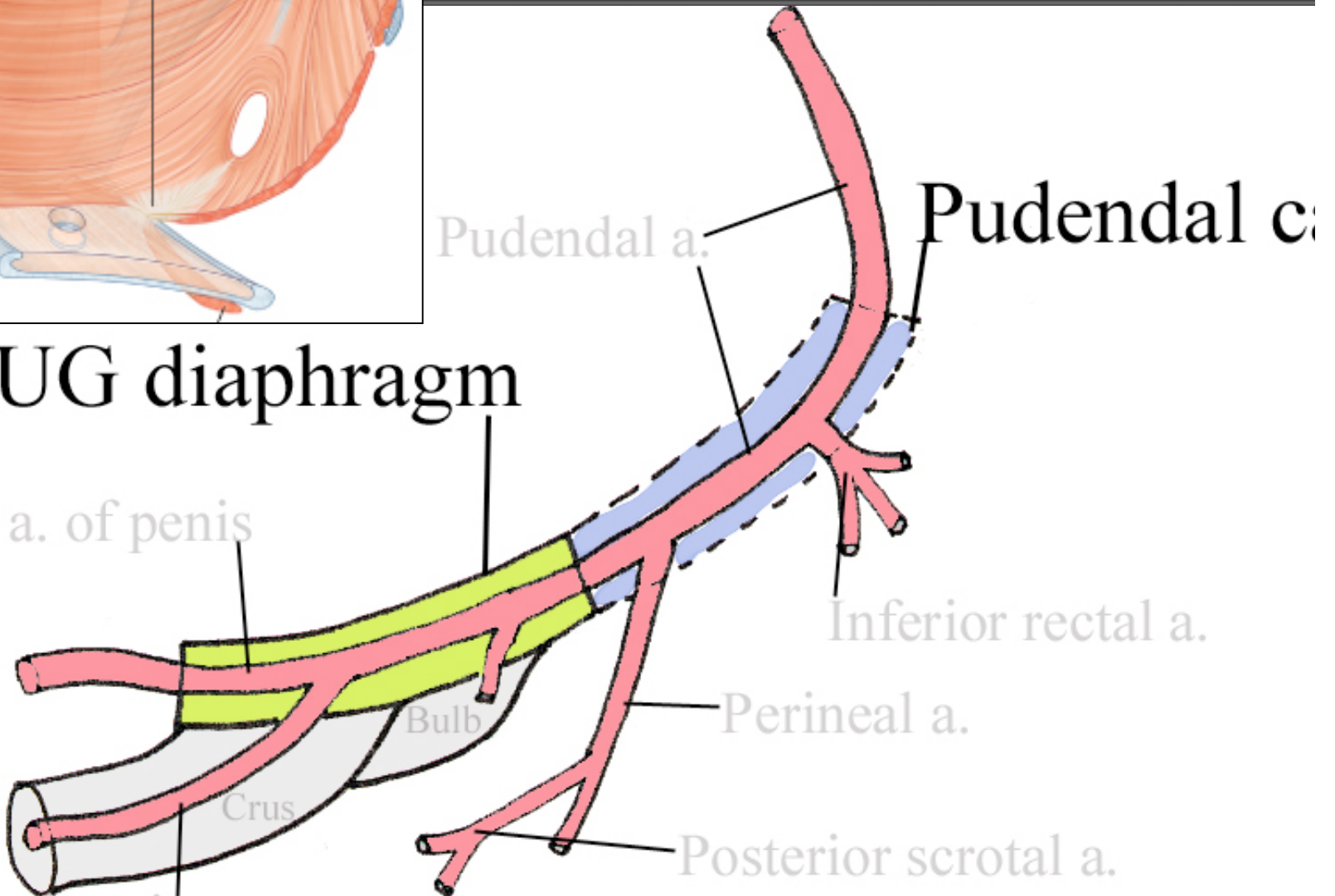
Inferior rectal a.

Perineal a.

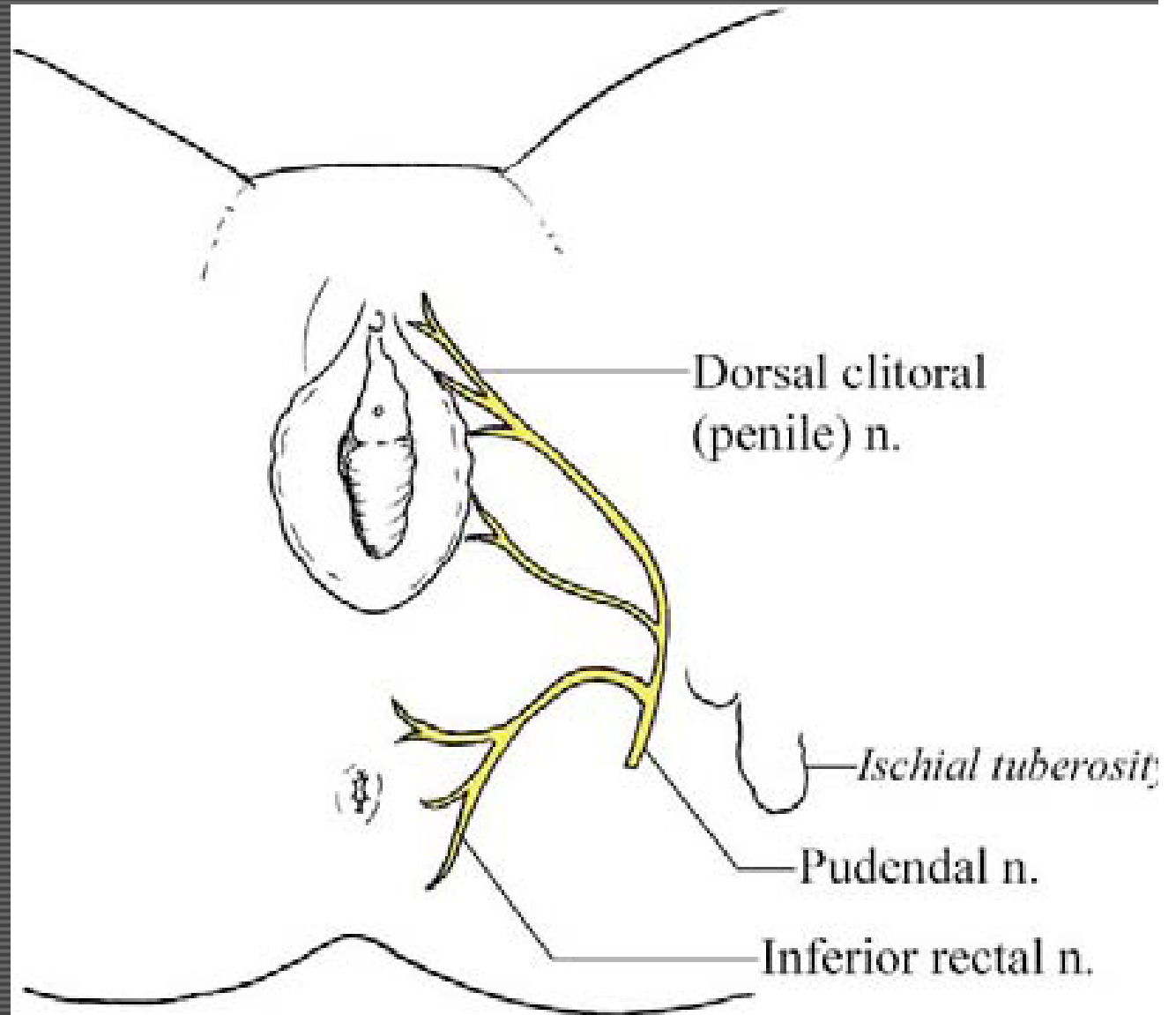
Posterior scrotal a.

Bulb

Crus

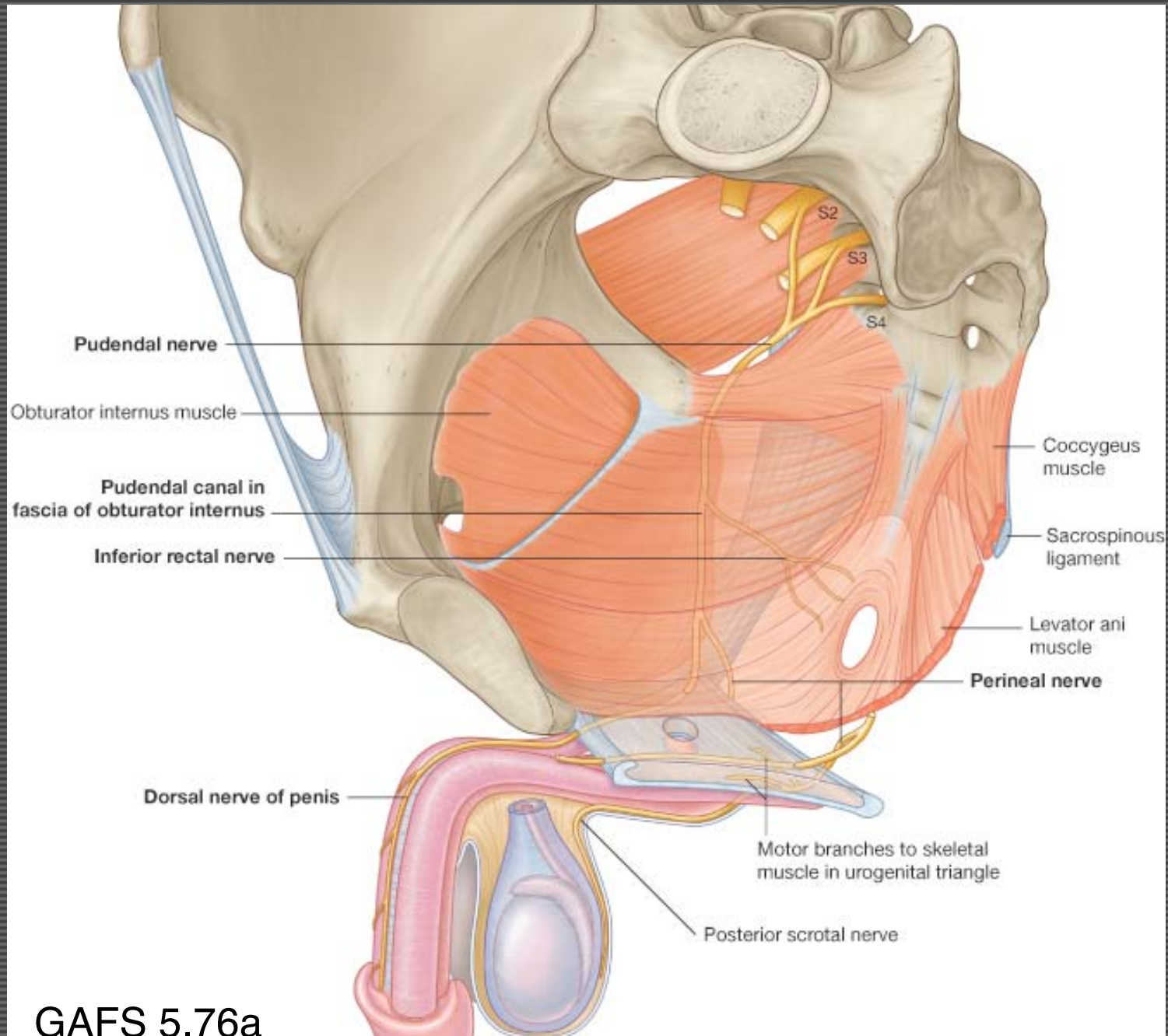


1) UG Triangle - c) Innervation



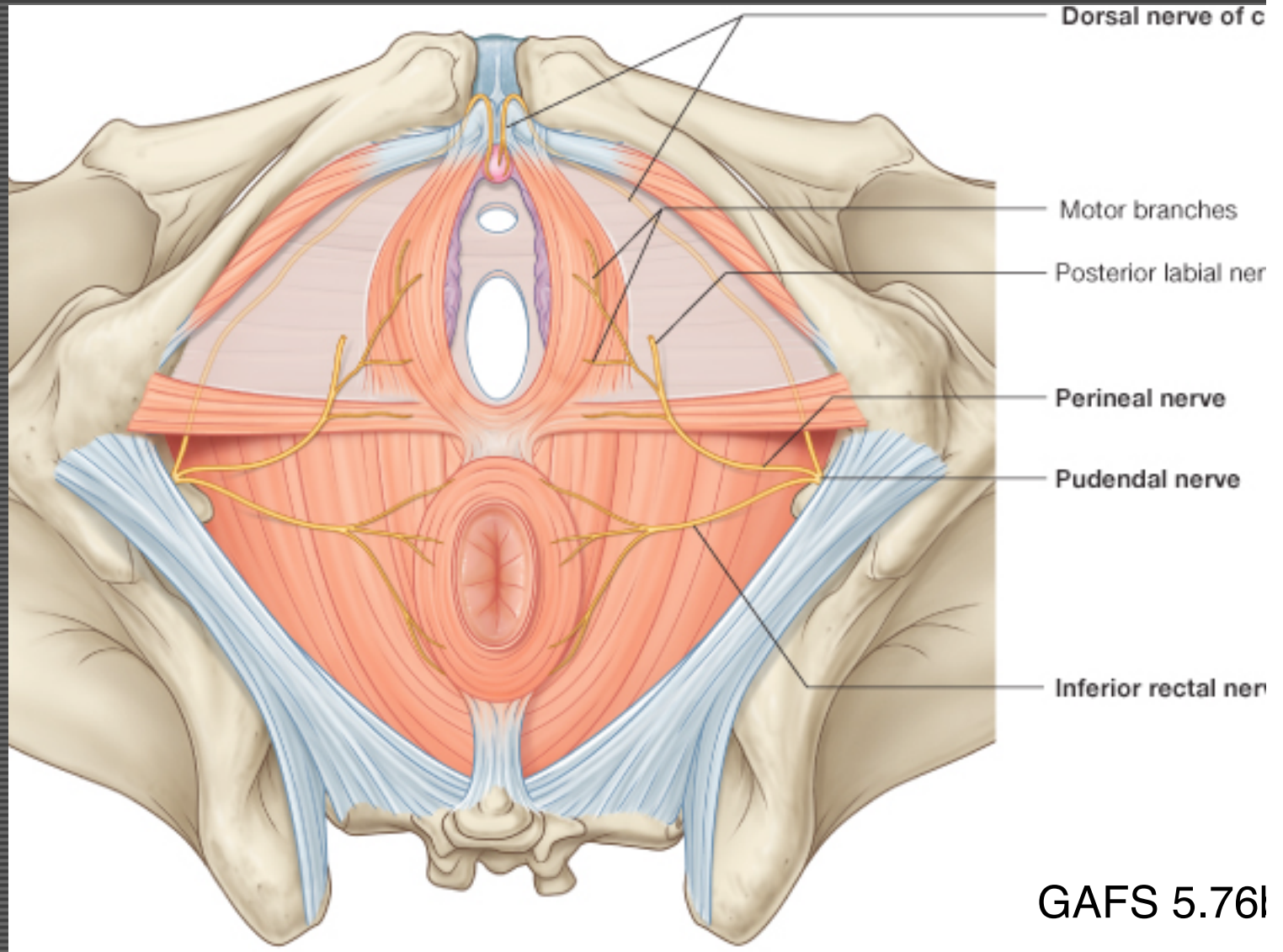
Innervation of the female perineum

1) UG Triangle - c) Innervation

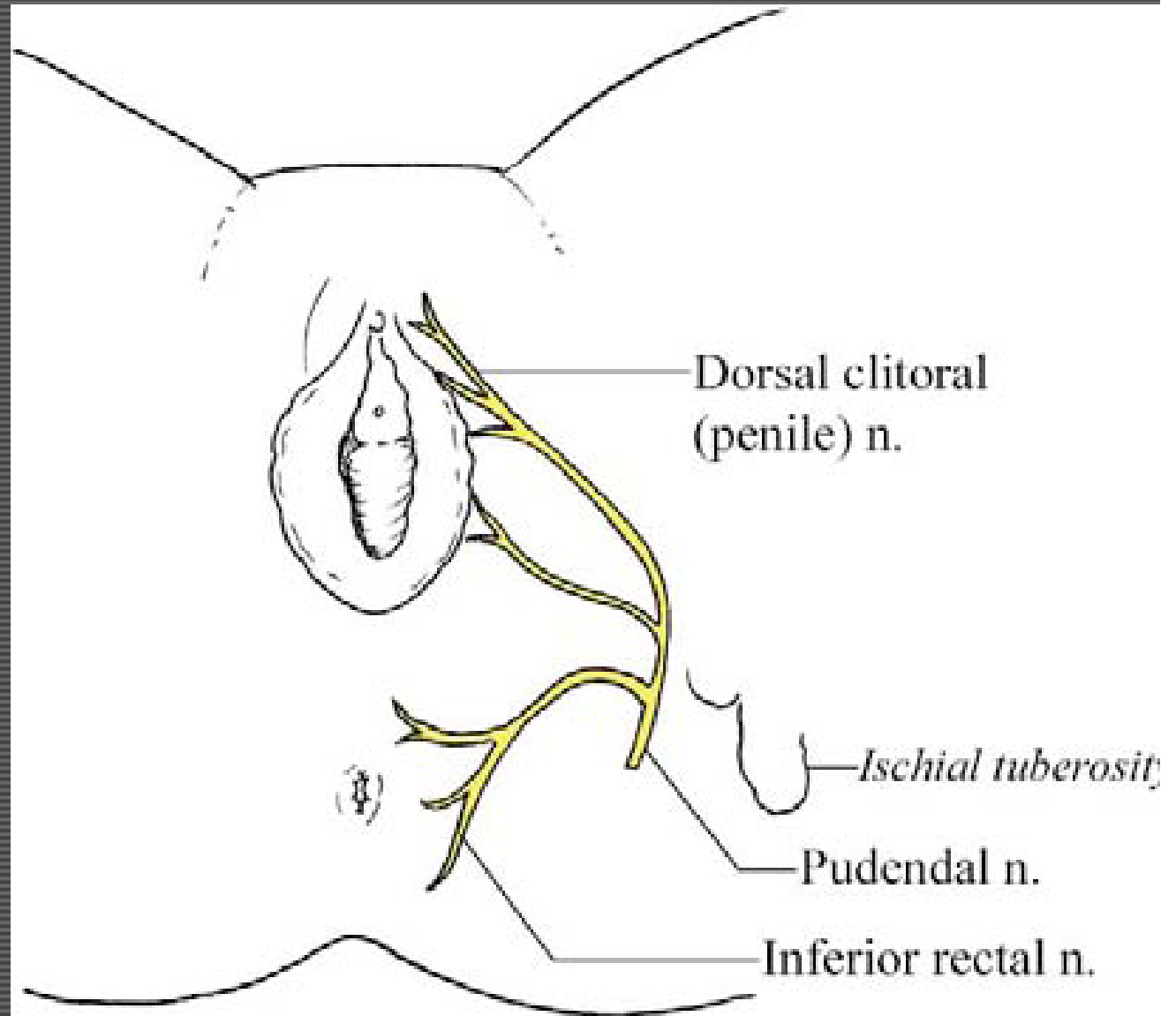


GAFS 5.76a

1) UG Triangle - c) Innervation



1) UG Triangle - c) Innervation

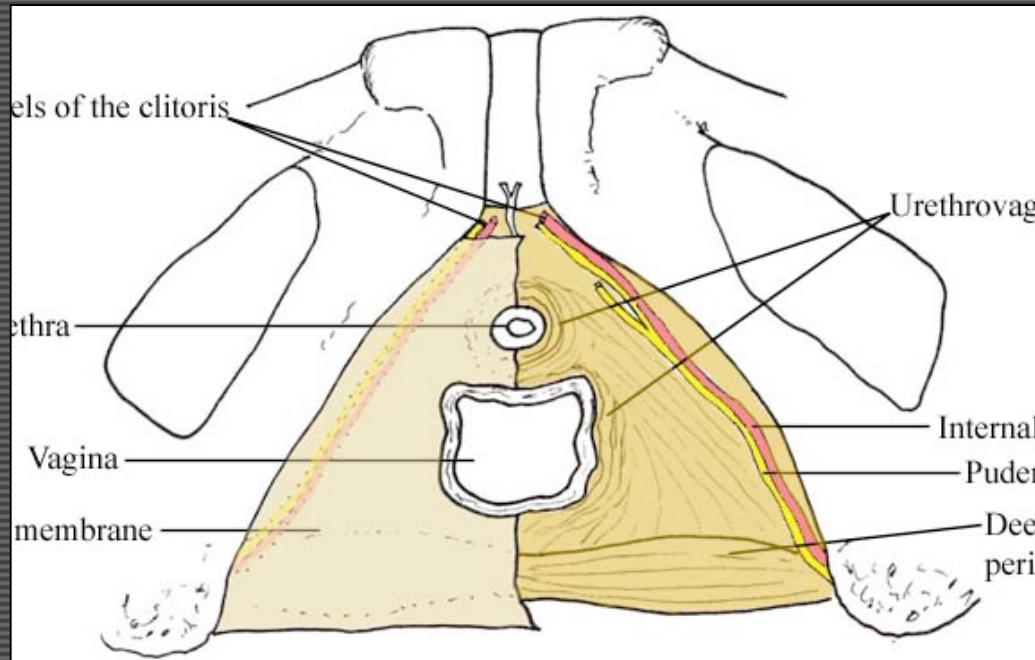


Innervation of the female perineum

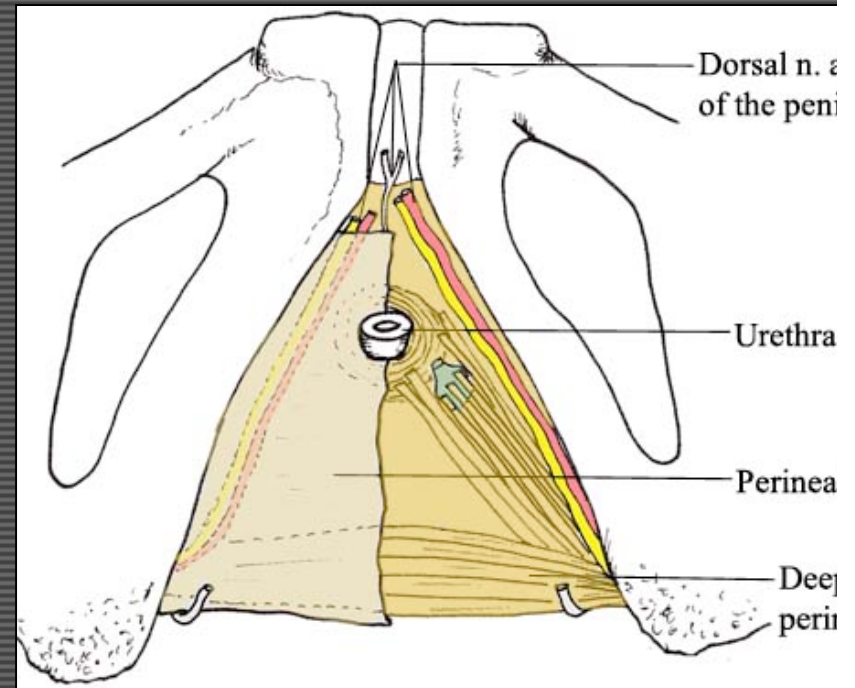
2) Deep Perineal Space

a) Boundaries

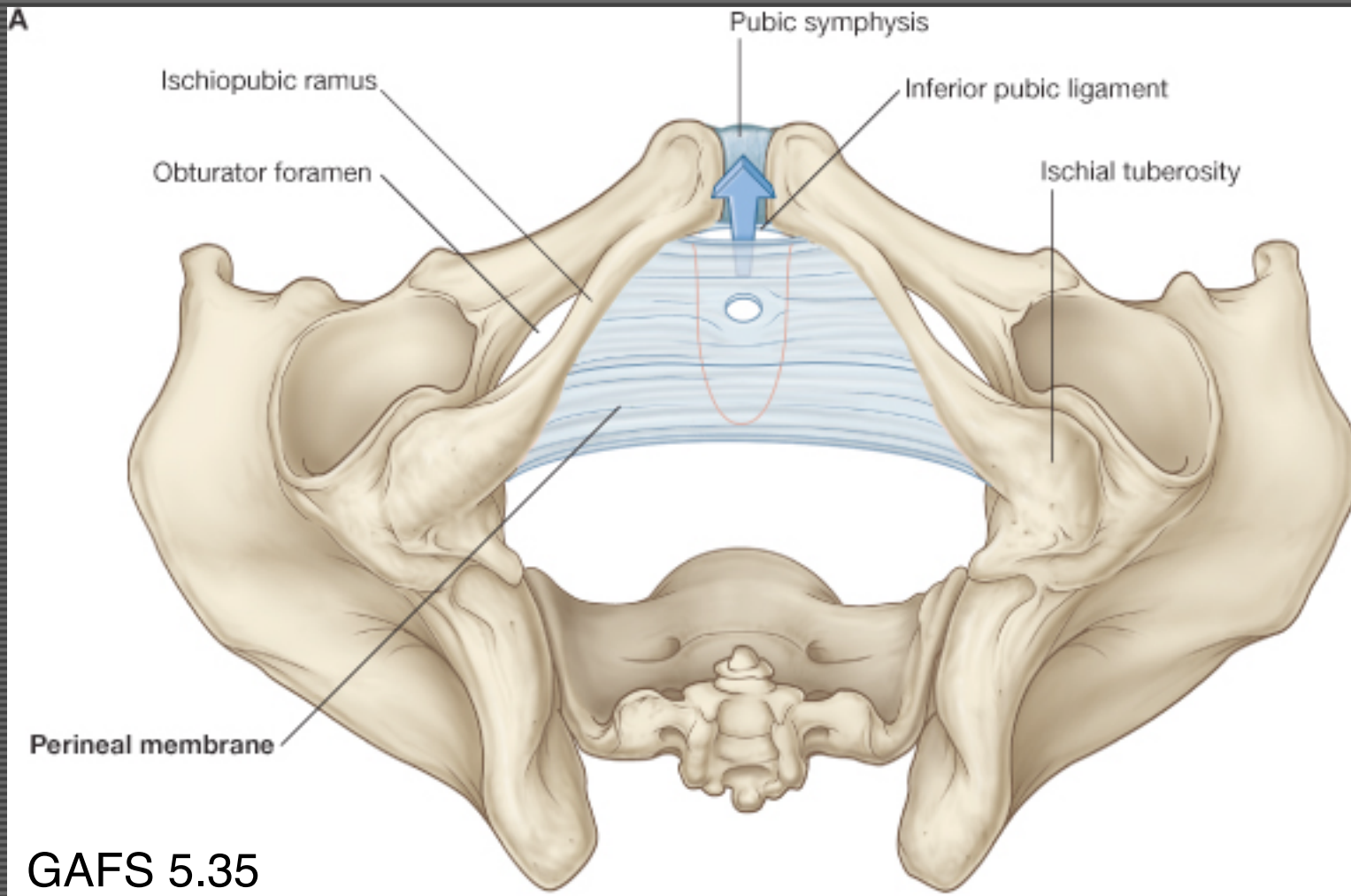
Female

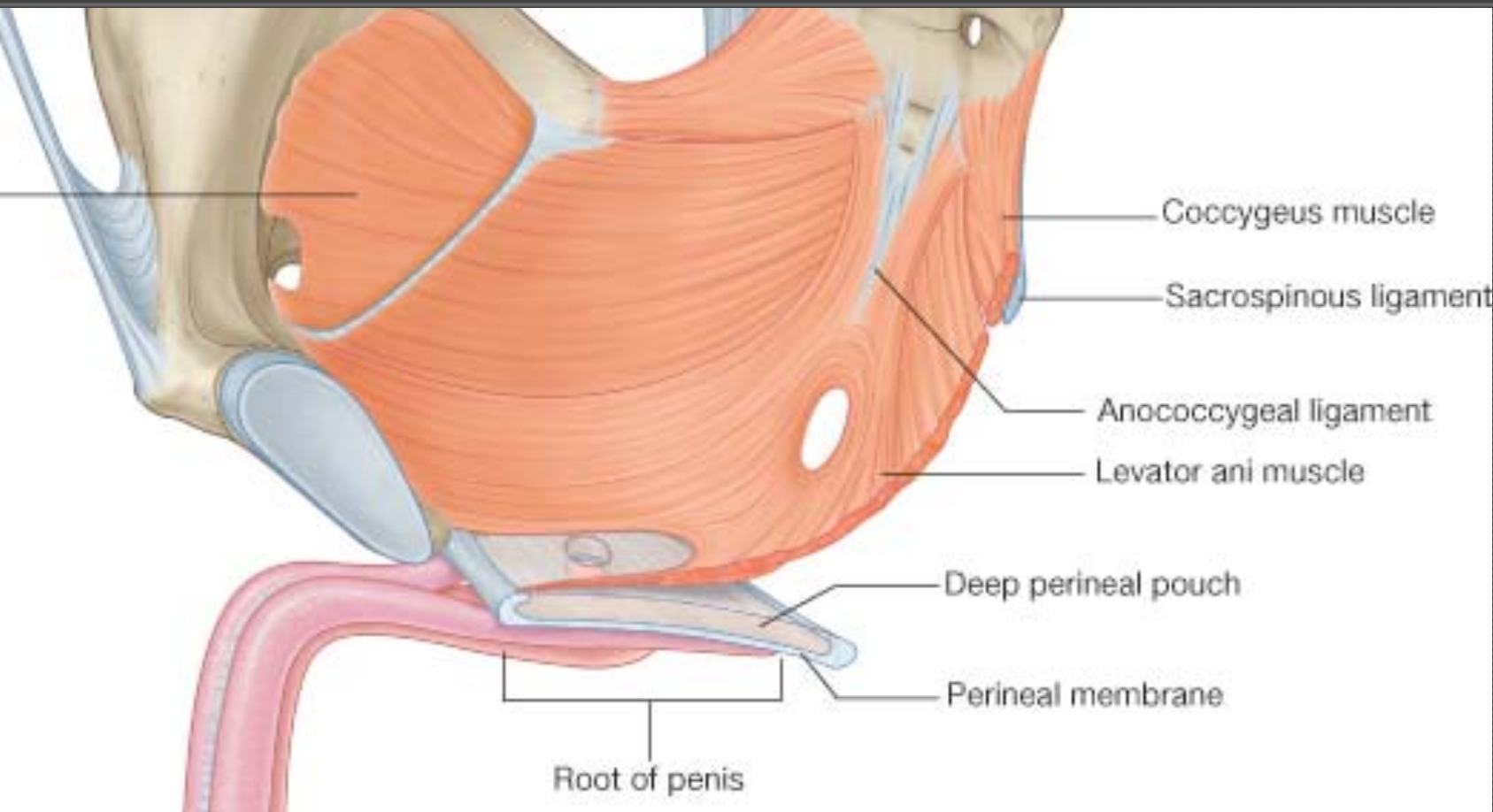


Male

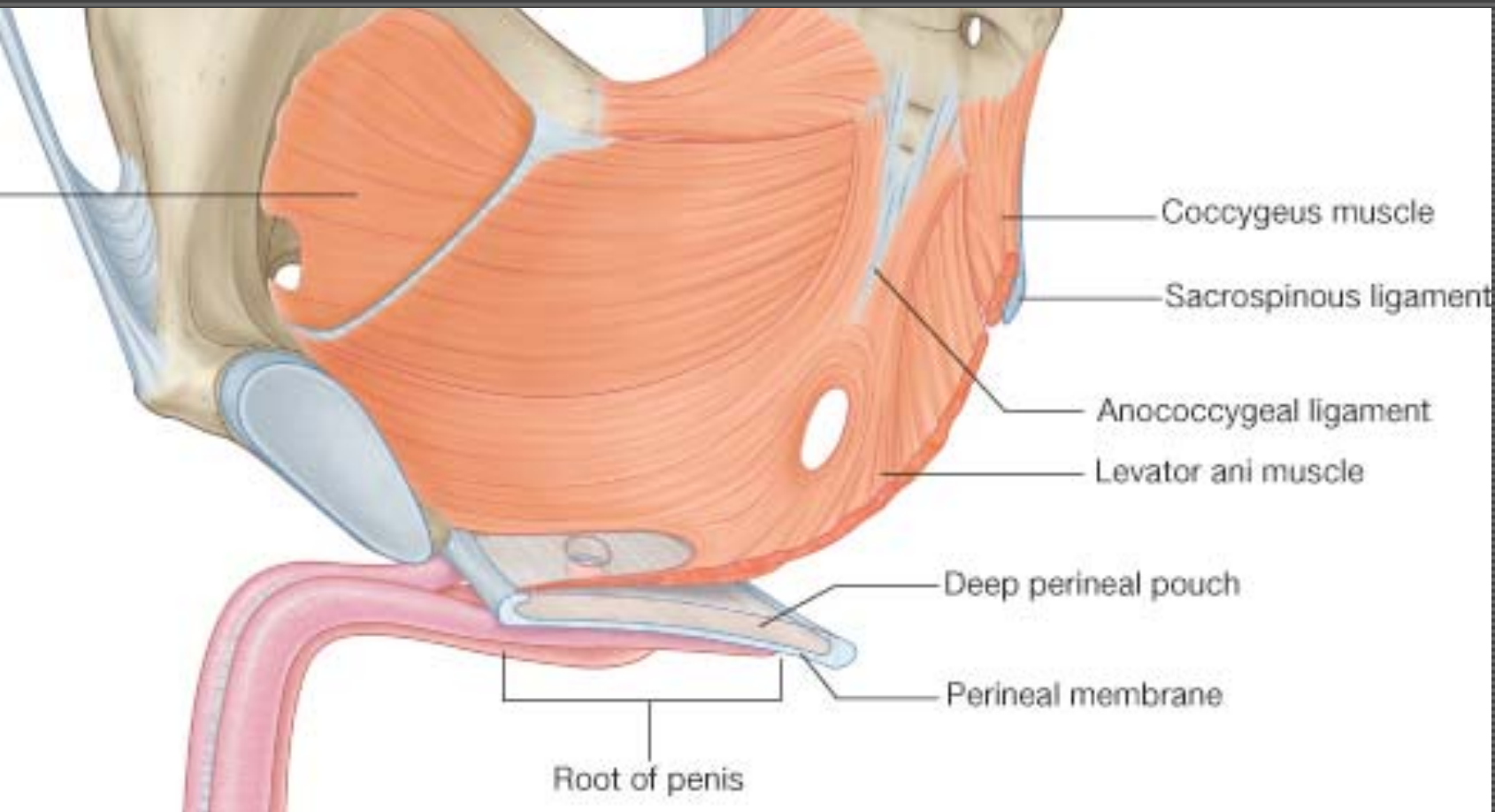


2) Deep Perineal Space

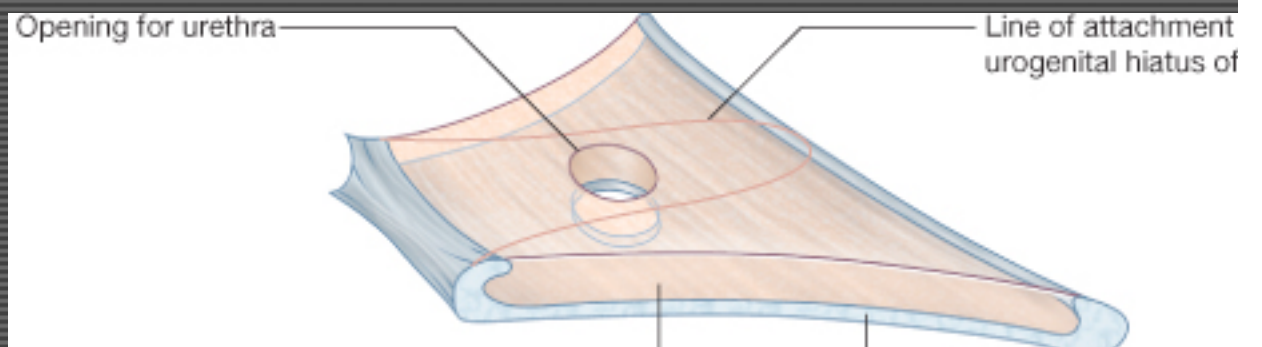




GAFS 5.35

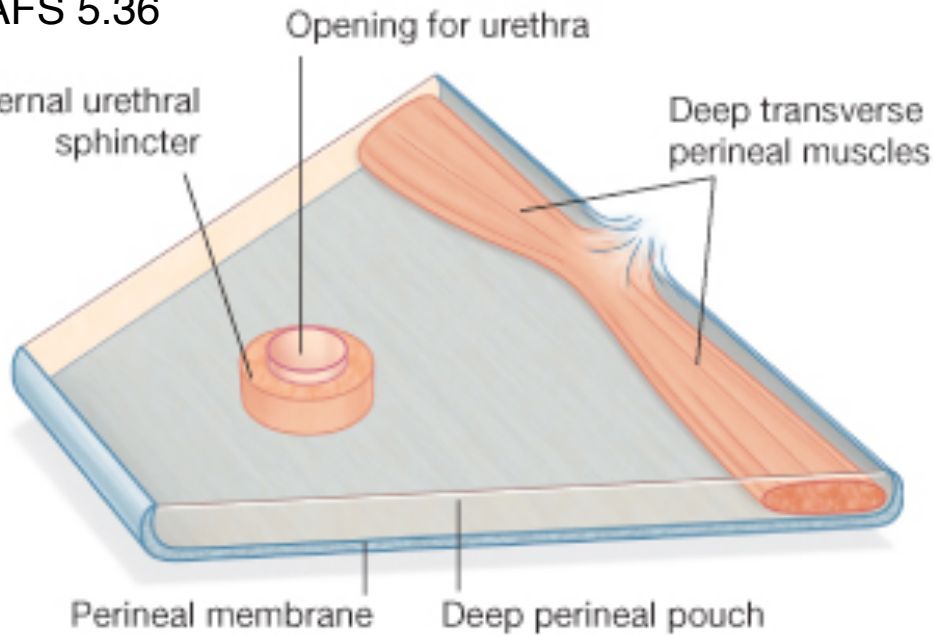


GAFS 5.35

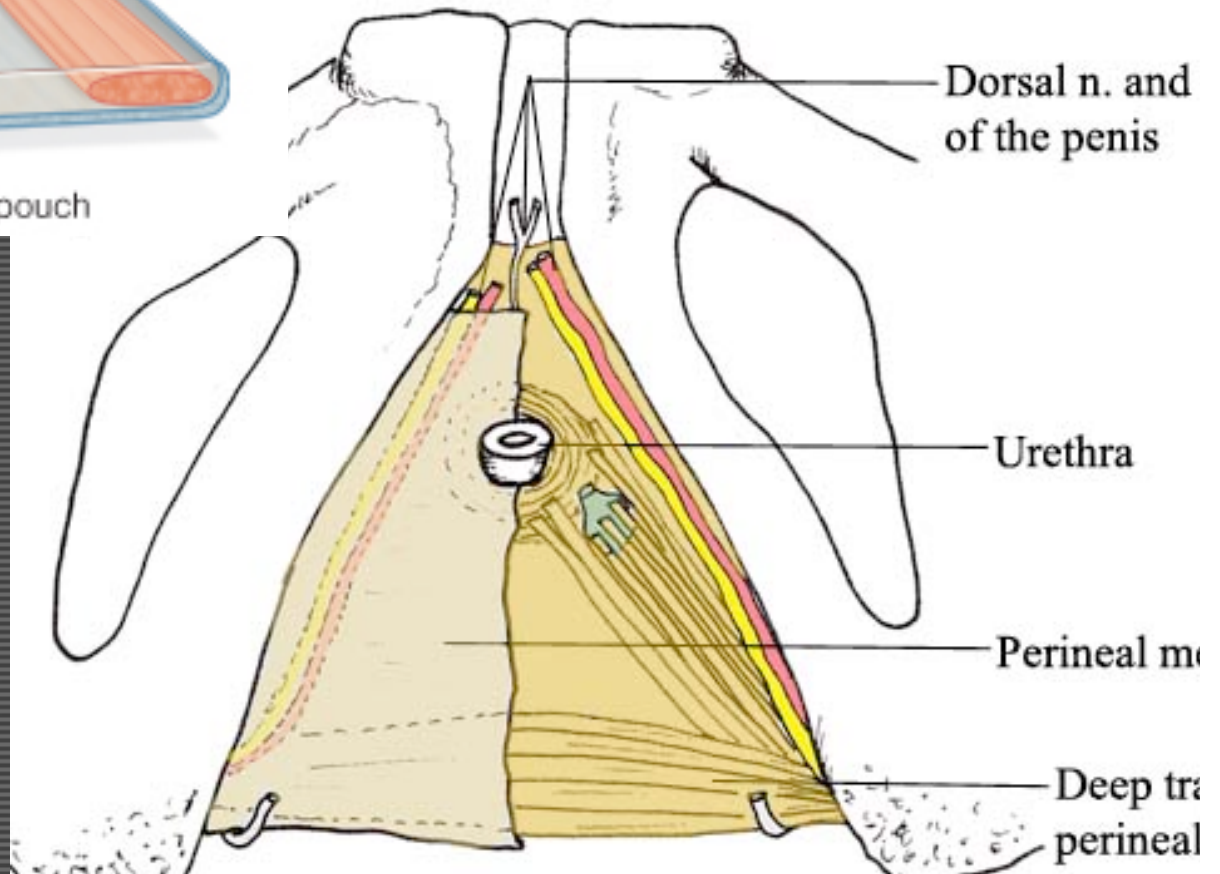


2) Deep Perineal Space - Male

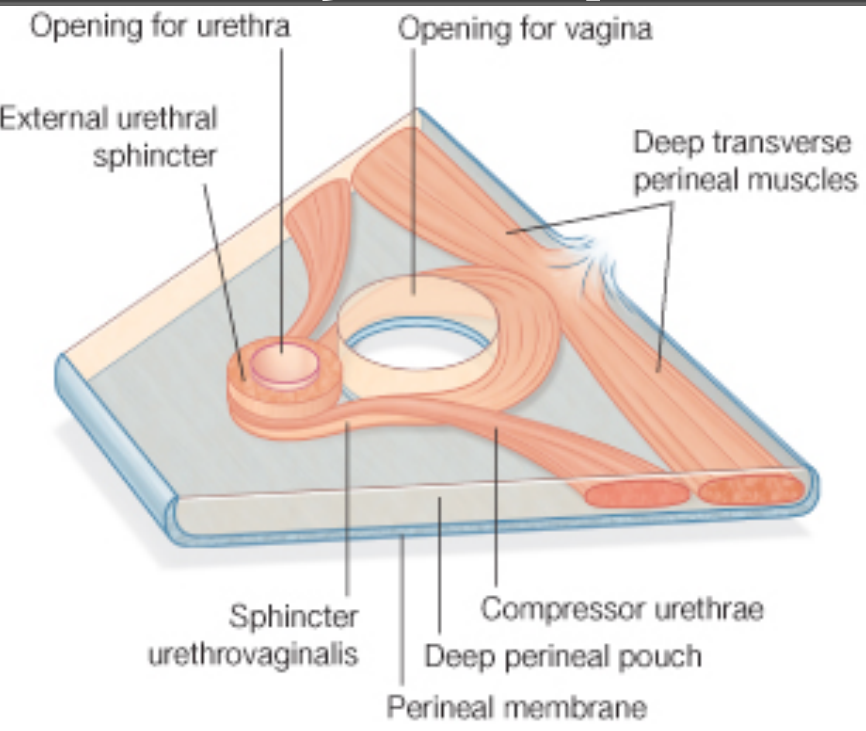
GAFS 5.36



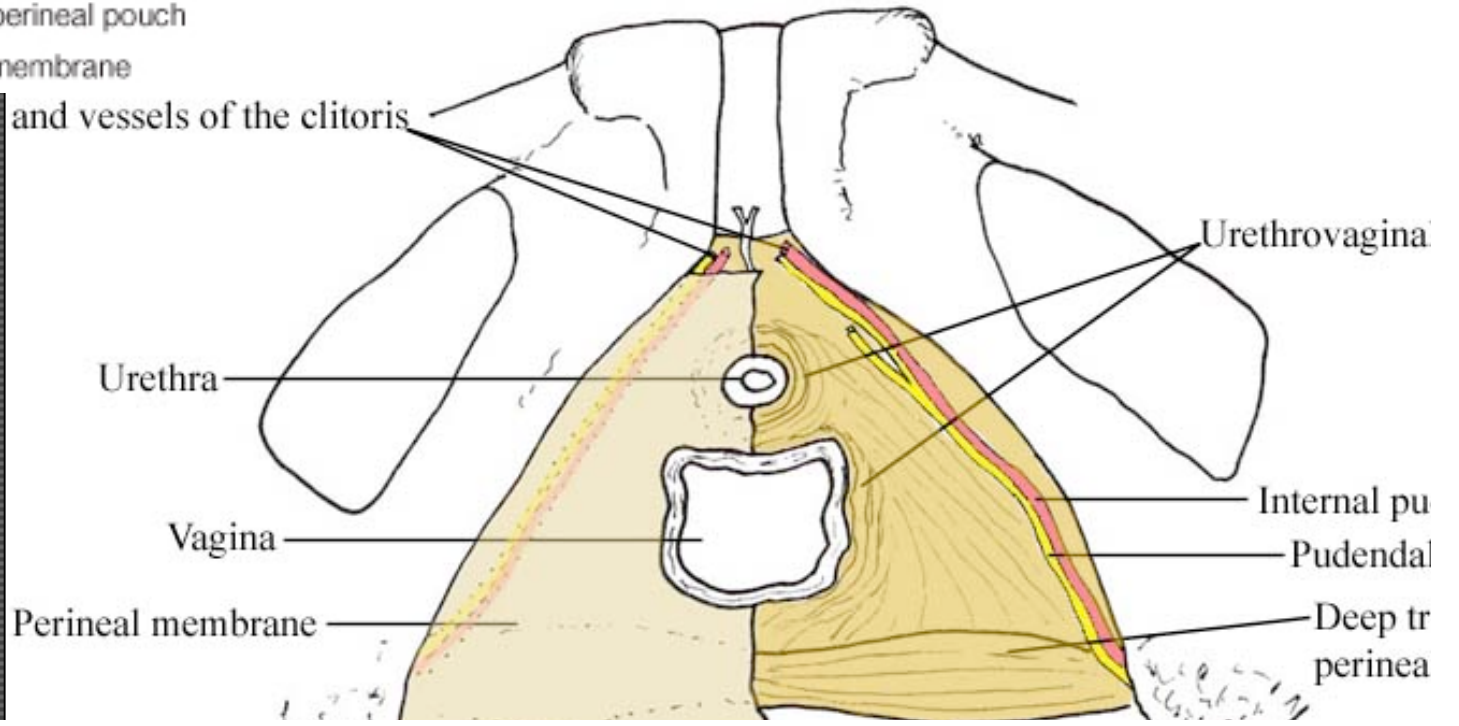
b) Compare/contrast content



2) Deep Perineal Space - Female



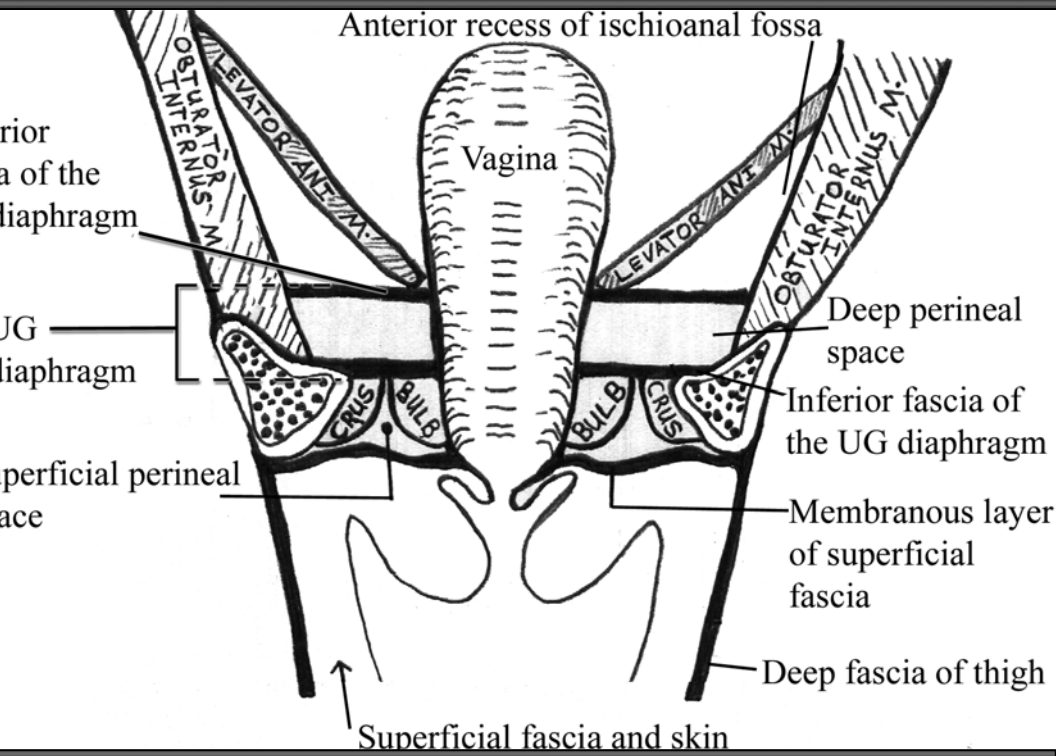
b) Compare/contrast content



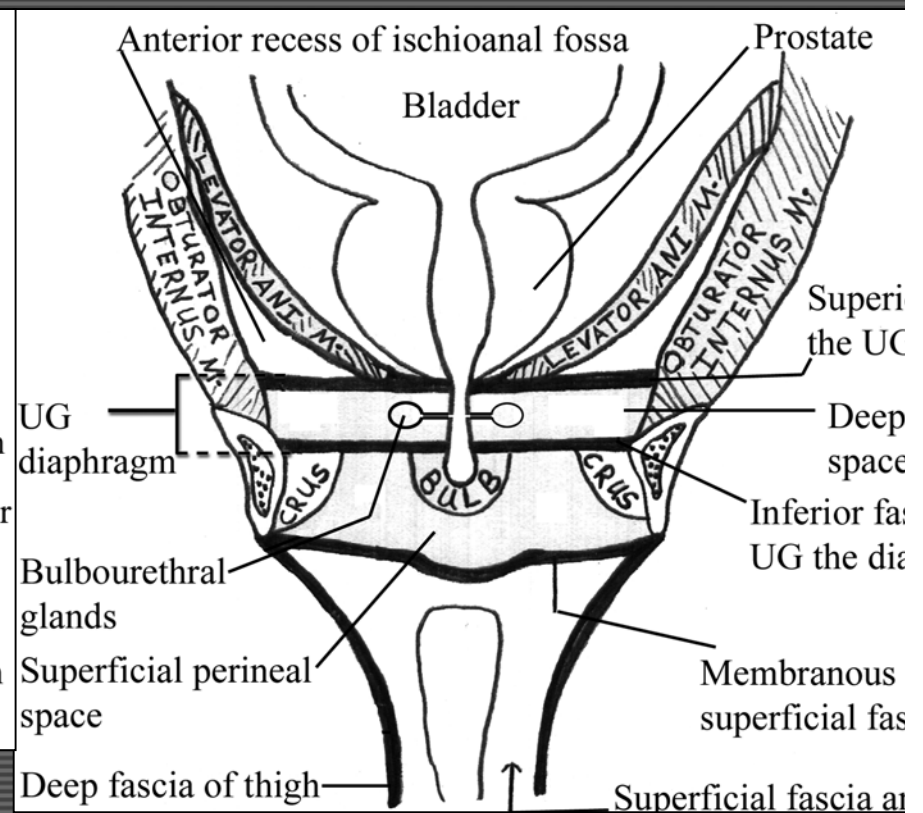
3) Superficial Perineal Pouch

a) Boundaries

Female



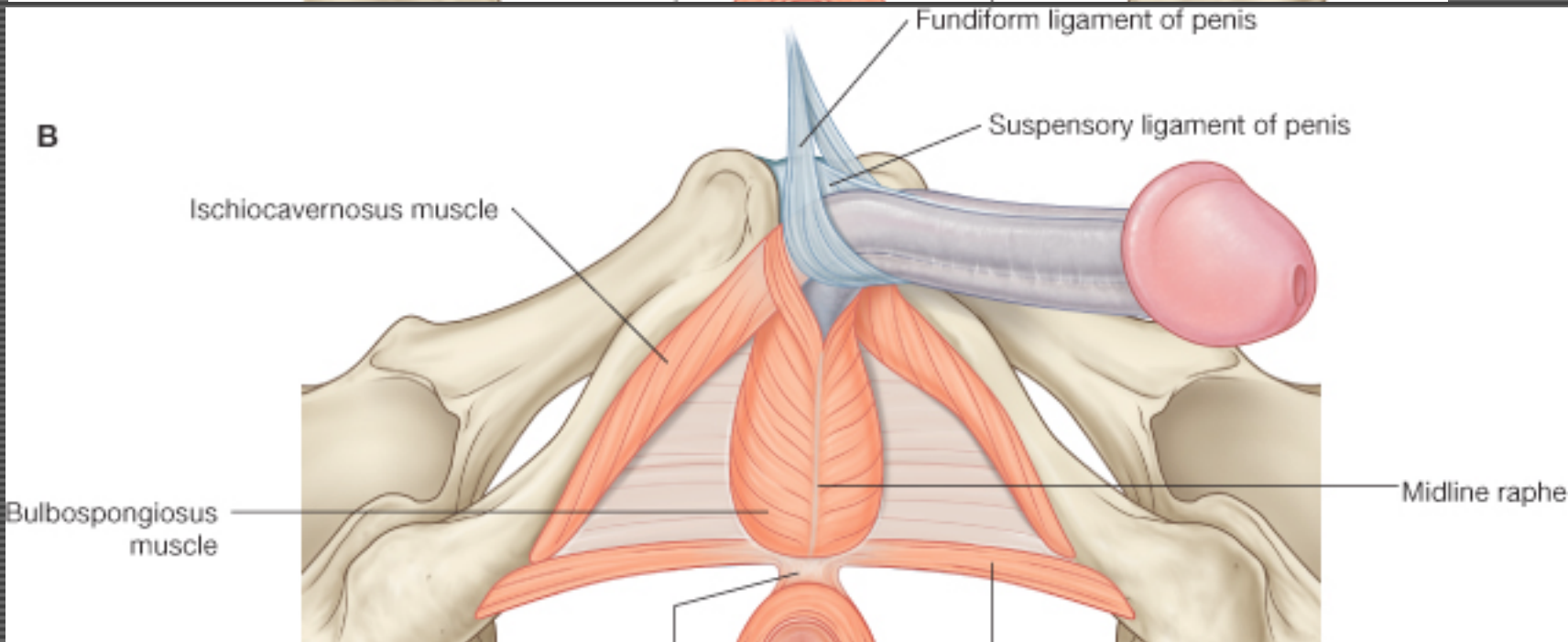
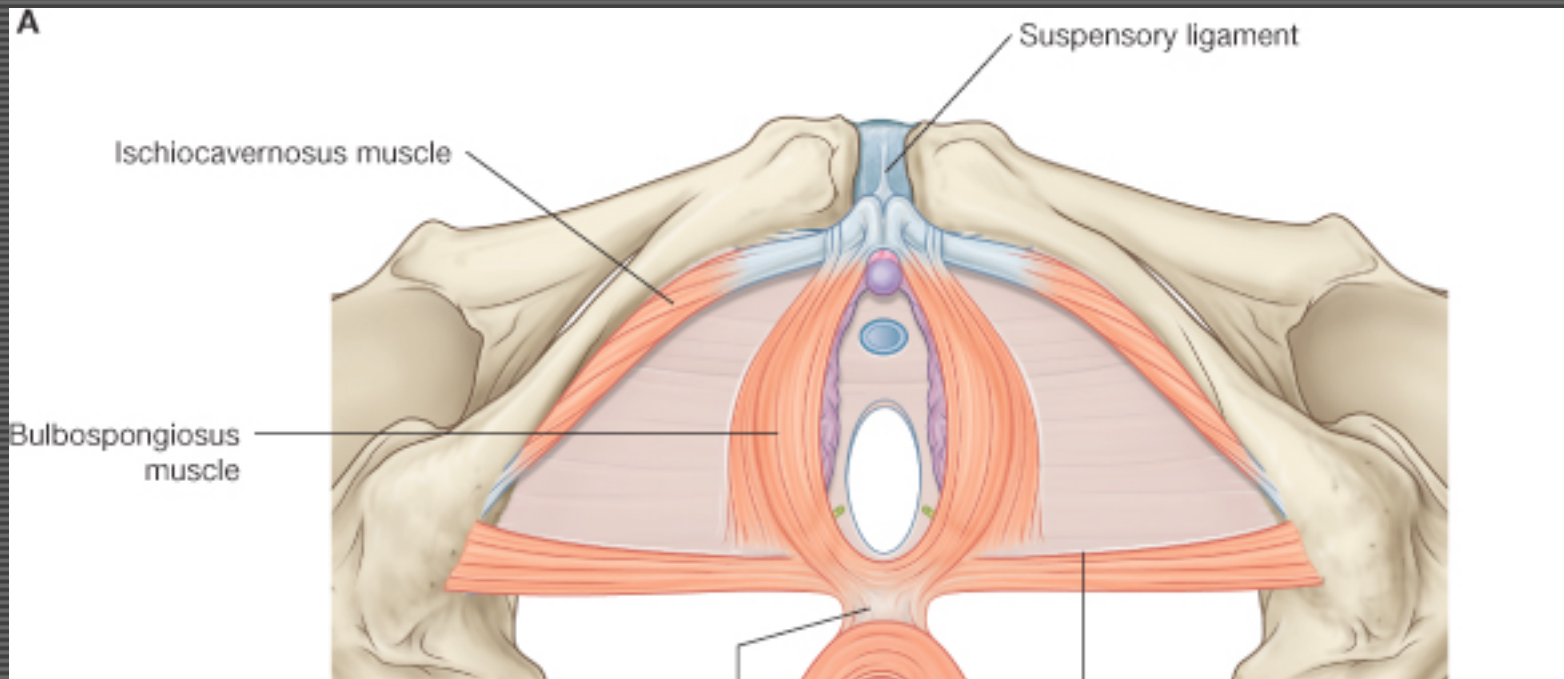
Male



3) Superficial Perineal Space

GA

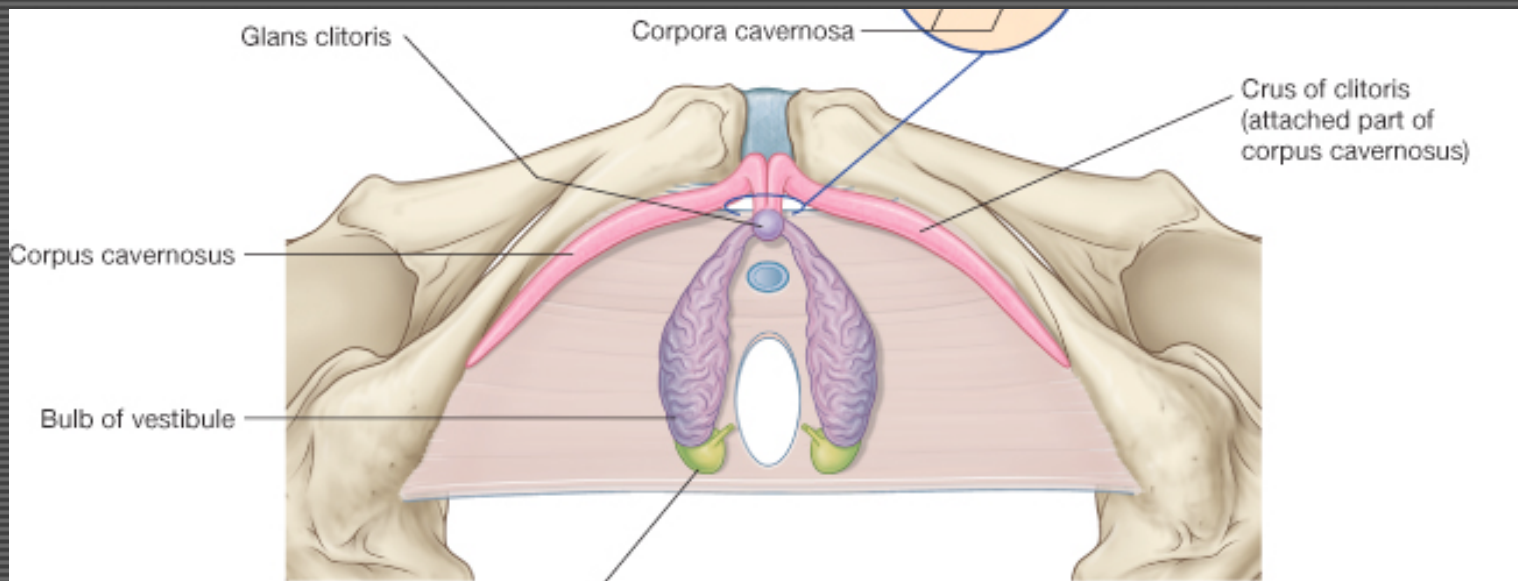
Fema



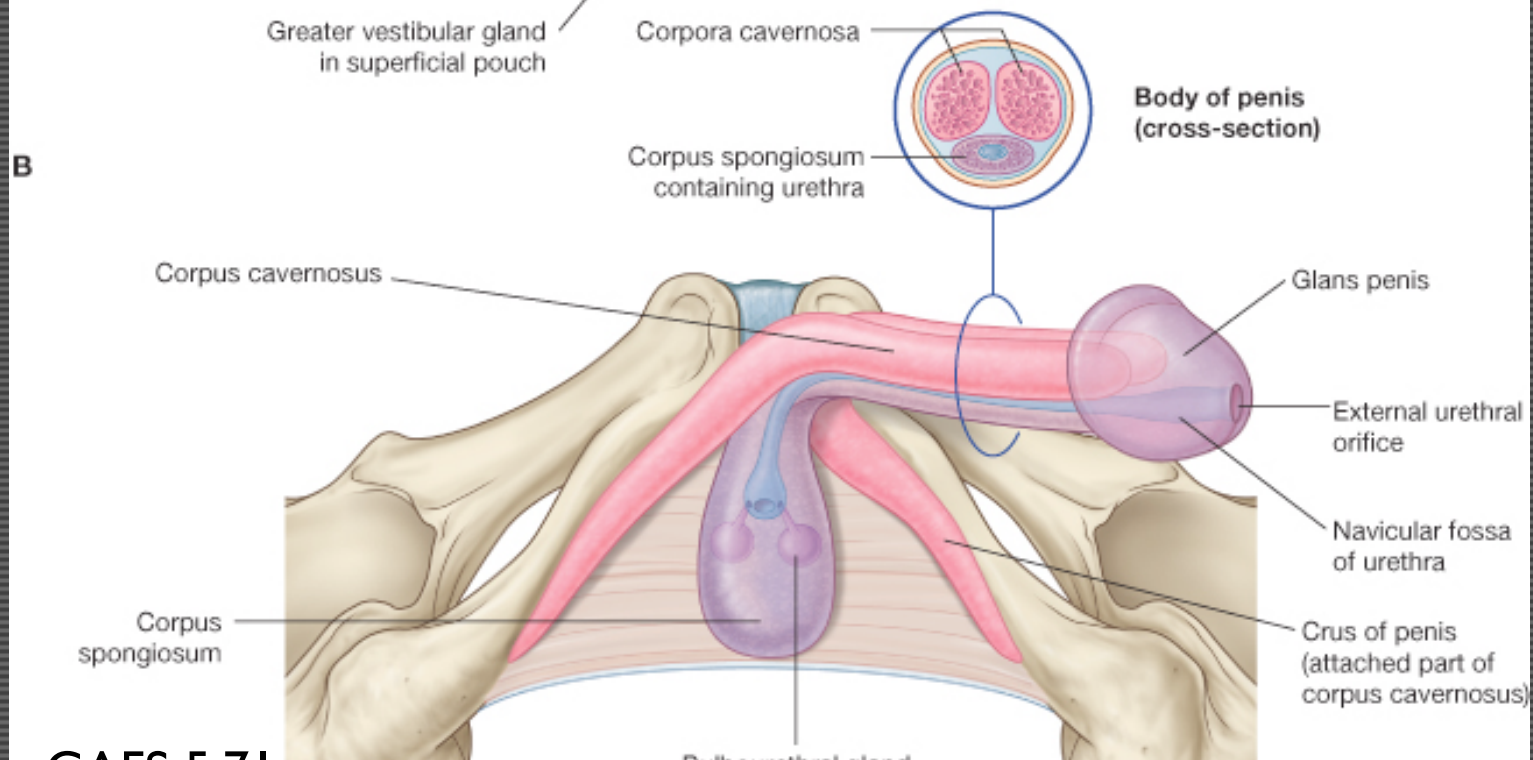
N

3) Superficial Perineal Space

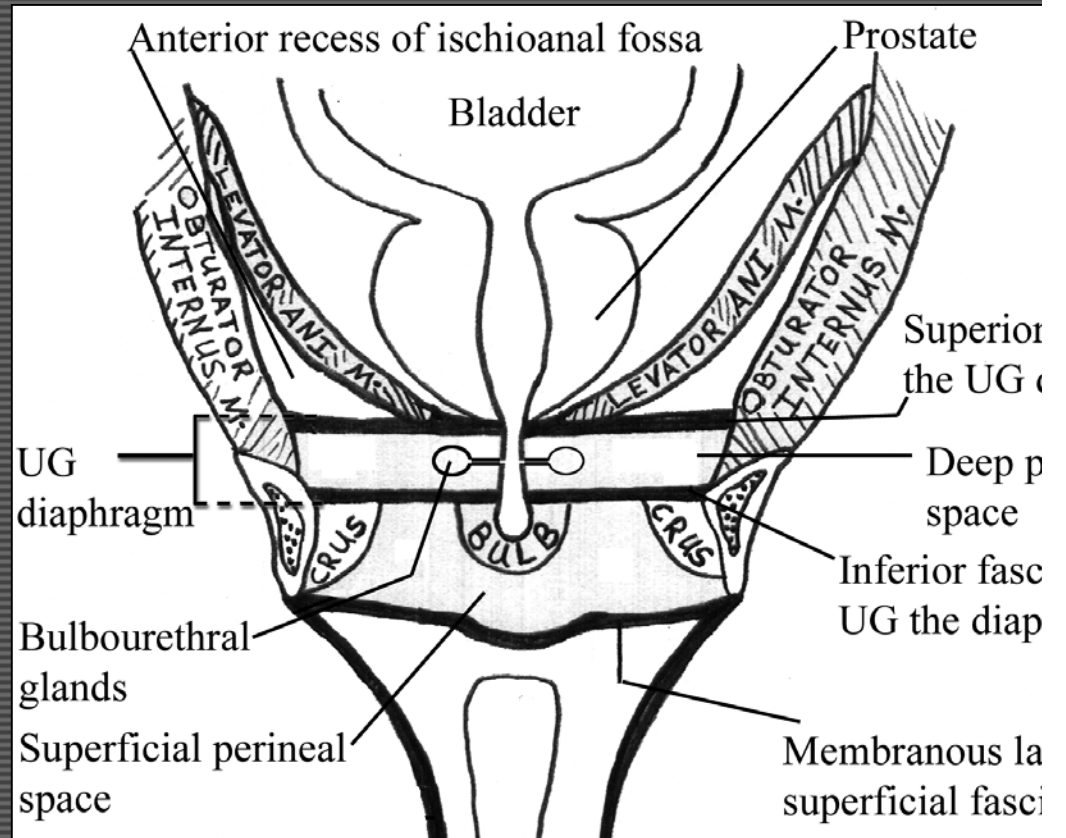
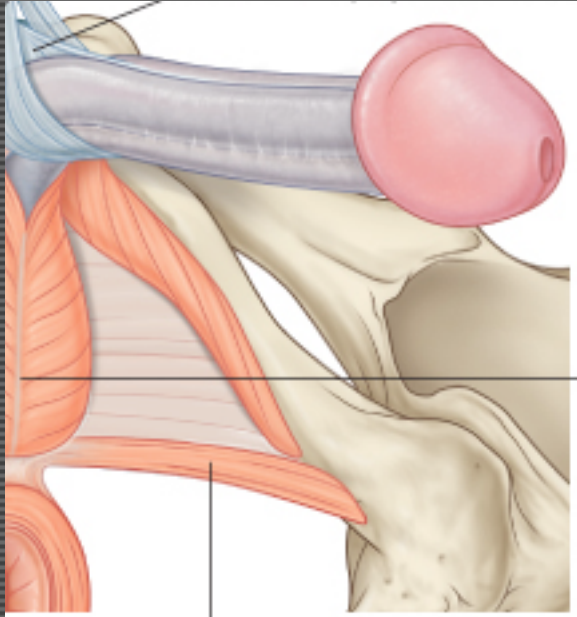
Female



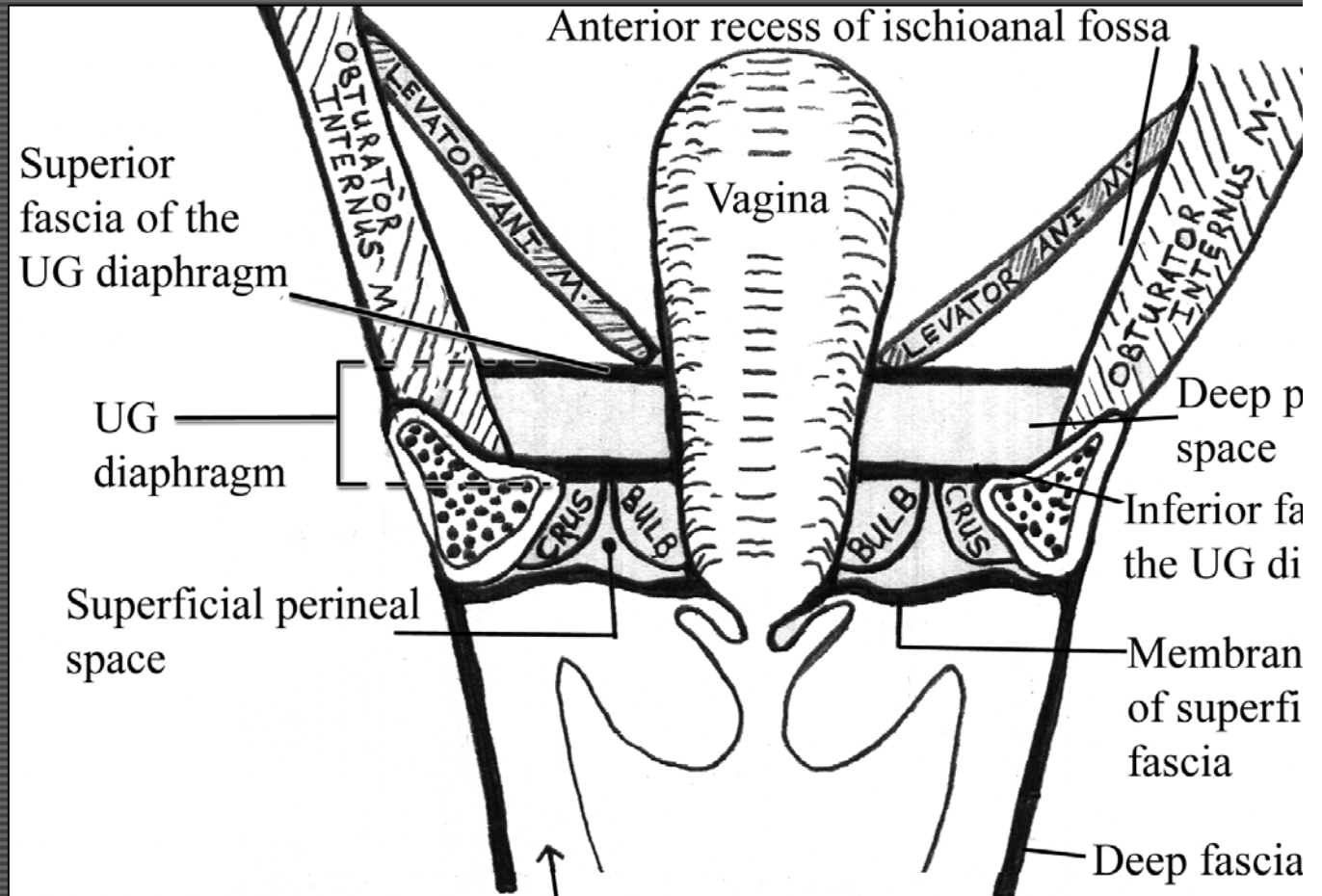
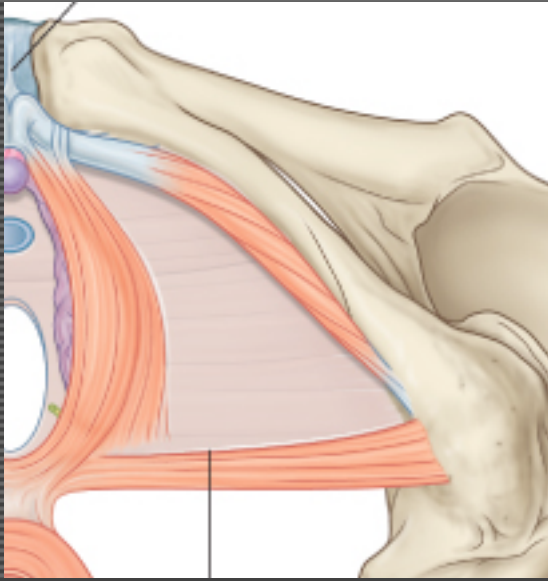
Male



3) Superficial Perineal Space - Male

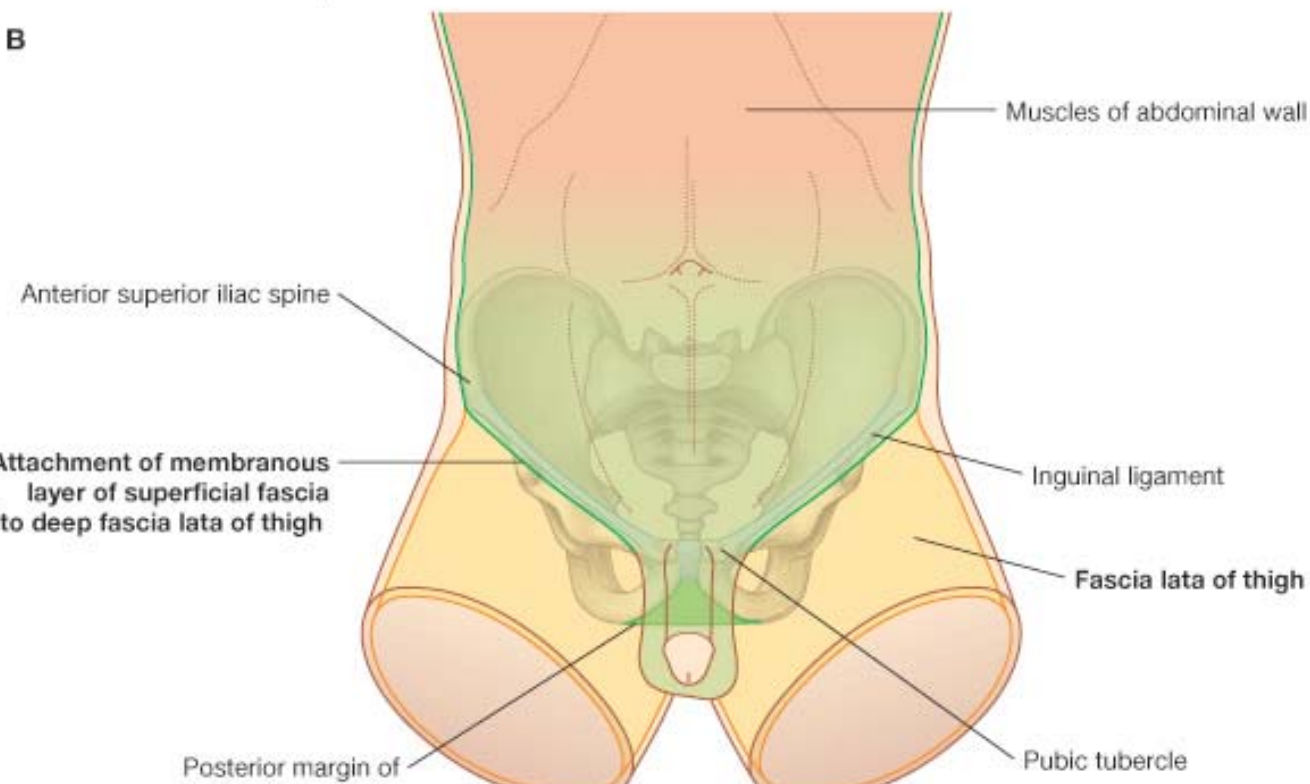
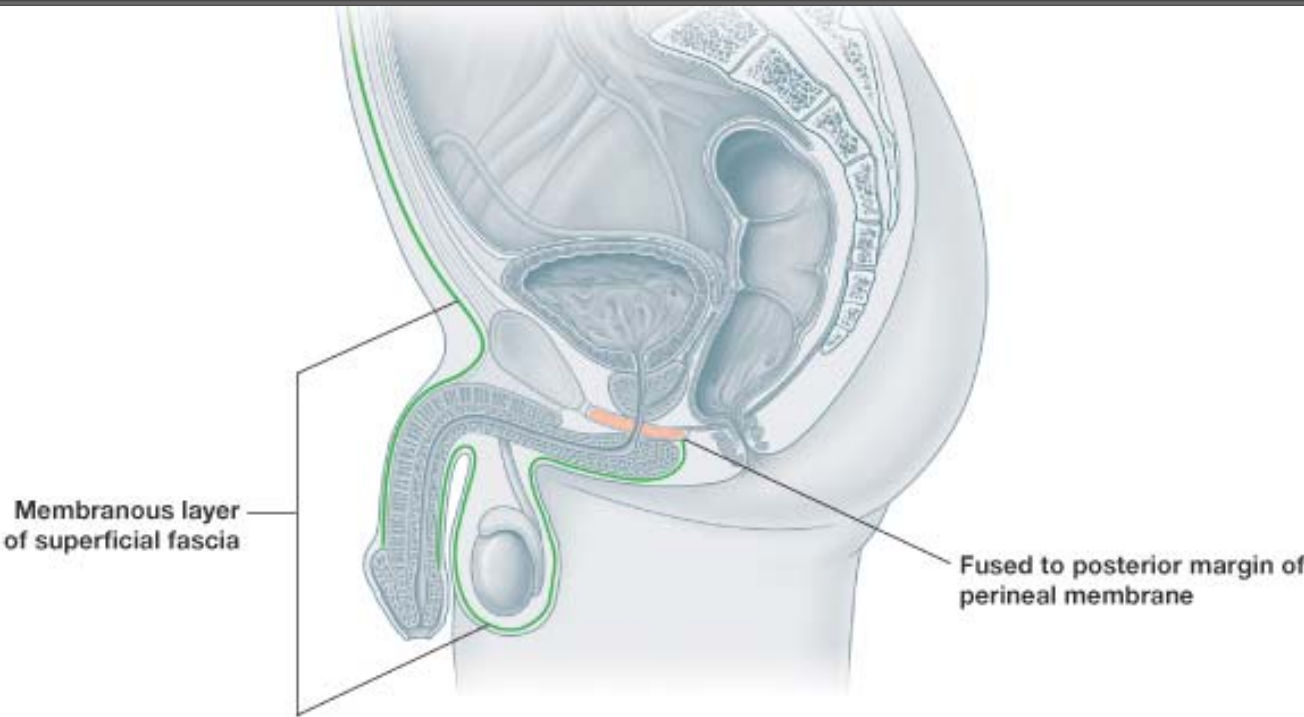


Perineum (Coronal Section) - Female

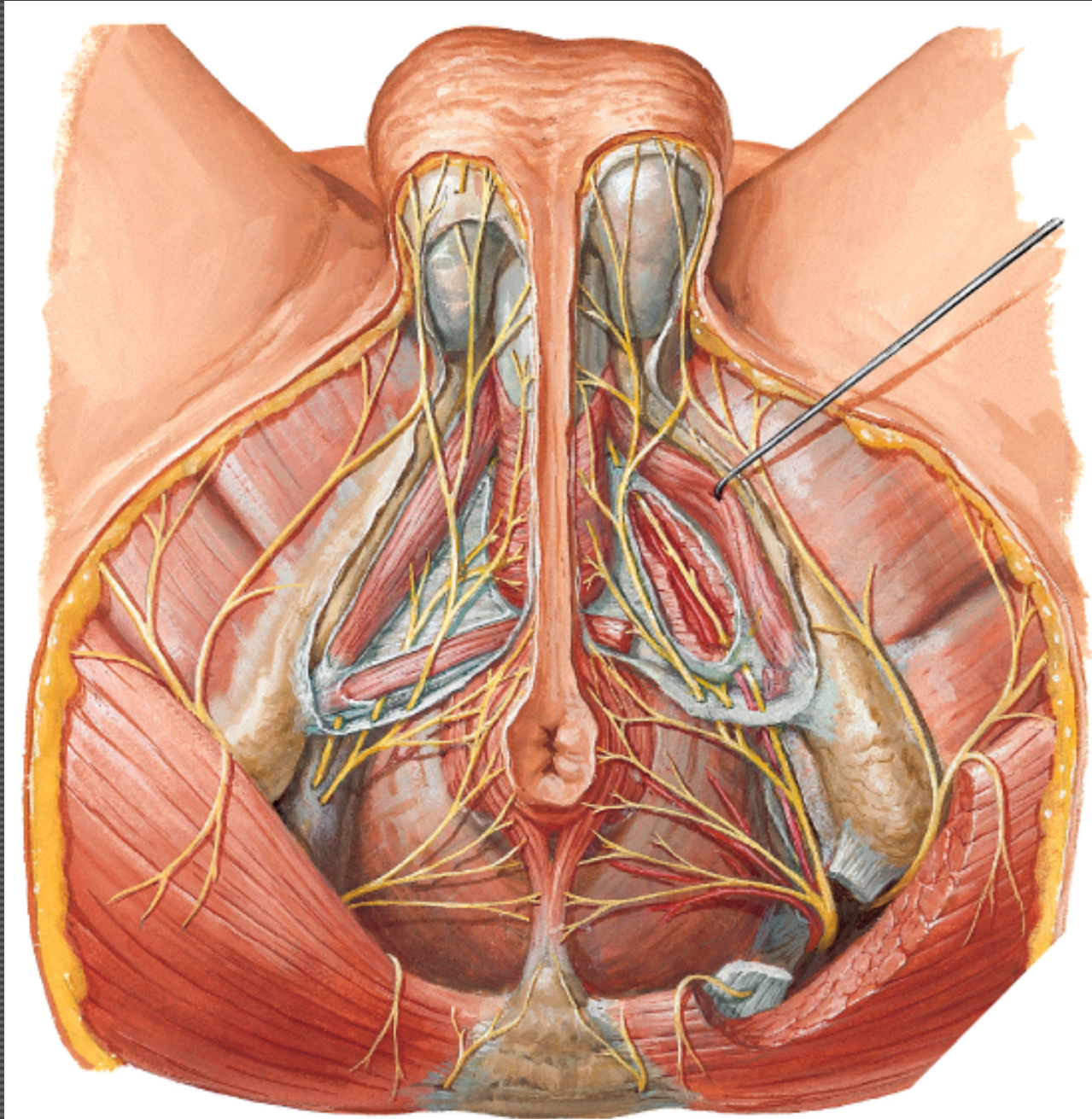


Membranous Layer of Superficial Fascia

In abdomen
= Scarpa's
In Perineum
= Colles'



3) Superficial Perineal Space



Deep Perineal Space

Male

Membranous urethra

Deep transverse perineal muscle

Sphincter urethra muscle

Internal pudendal arteries

Artery to bulb

Deep artery of penis

Dorsal artery of penis

Muscular branches

Internal pudendal veins and branches

Pudendal nerves and branches

Bulbourethral glands and ducts

Female

Membranous urethra

Deep transverse perineal muscle

Sphincter urethra muscle

Internal pudendal arteries

Artery to bulb

Deep artery of clitoris

Dorsal artery of clitoris

Muscular branches

Internal pudendal veins and branches

Pudendal nerves and branches

Tube of the vagina

Superficial Perineal Space

Male

Roots of external genitalia

Bulb/corpus spongiosum penis*

Crus/corpora cavernosa penis**

Bulbospongiosa muscle

Ischiocavernosa muscle

Spongy urethra

Perineal nerves, arteries and veins (N, A & V)

Posterior scrotal N, A & V

Muscular branches

Superficial transverse perineal muscle

Female

Roots of external genitalia

Bulb/bulbovestibuli

Crus/corpora cavernosa clitoris**

Bulbovestibuli muscle

Ischiocavernosa muscle

Spongy urethra

Perineal nerves, arteries and veins (N, A & V)

Posterior labial N, A & V

Muscular branches

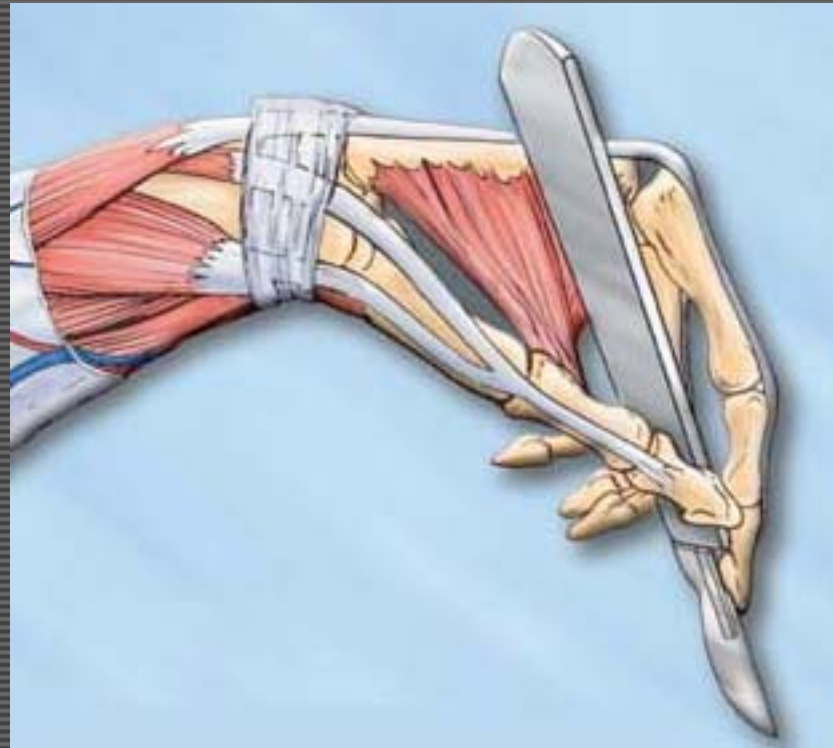
Superficial transverse perineal muscle

Greater vestibular glands and ducts

Tube of the vagina

* Changes names distal to the suspensory ligament to corpus spongiosa penis

** Changes names distal to the suspensory ligament to corpora cavernosa penis/clitoris



THANK-YOU