

ANGLING AUCTIONS

SALE OF
FISHING TACKLE
and
RELATED ITEMS

at the
CROSFIELD HALL
BROADWATER ROAD
ROMSEY, HANTS
SO51 8GL

on
SATURDAY, 10th April 2021
at 12 noon



TERMS AND CONDITIONS

A. BUYERS

1. The Auctioneers as agent

Unless otherwise stated, the Auctioneers act only as agent for the Vendor.

2. Buyer

- (a) The Buyer shall be the highest bidder acceptable to the Auctioneer and the Auctioneers shall have absolute discretion to settle any dispute.
- (b) The Auctioneer reserves the right to refuse to accept bids from any person or to refuse admission to the premises of sale without giving any reason thereof.

3. Buyers Premium

The Buyer shall pay the Auctioneer a premium of 18% of the Hammer Price (together with VAT at the standard rate thereon).

4. Payment

Payment on purchased Lots can be made by the following methods:-

- (a) Cash
- (b) Cheque supported by a bank or other suitable reference
- (c) Mastercard or Visa

5. Collection of Purchases

- (a) All purchased Lots are to be paid for in full and removed from the saleroom on the day of sale after which the Auctioneers reserve the right to remove any Lot(s) to store at the sole expense of the buyer and without notification, unless otherwise arranged with the Auctioneer prior to the sale.
- (b) Wherever possible goods will be made available for collection during the sale.

6. Responsibility for purchase Lots

- (a) Upon the fall of the Hammer all risk in the Lot sold will pass to the buyer and neither the Auctioneer nor Vendor shall be responsible for any loss or damage howsoever caused, but ownership of such Lot shall not pass until payment in respect thereof has been made in accordance with Condition A. 5(a).
- (b) In the event of a Buyer either failing to pay for or collect a Lot the Auctioneers reserve the right to exercise one or more of the following rights:-
 - (i) to issue proceedings against the Buyer for breach of contract
 - (ii) to rescind the sale of that and any other Lots(s) sold to the buyer
 - (iii) to resell the Lot(s) either by public or private sale.

Any deficiency in the Purchase Price resulting from the resale, together with full costs incurred shall be paid to the Auctioneers by the Buyer and any surplus over the Proceeds of Sale shall belong to the Vendor.

7. Catalogue Description

- (a) All Lots are offered for sale as shown and neither the Auctioneer nor Vendor accept any responsibility for imperfections, faults or errors of description, buyers should satisfy themselves as to the condition of any Lots prior to bidding.
- (b) Descriptions contained in the catalogue are the opinion of the Auctioneers and should not be taken as a representation of statement or fact. Some descriptions in the catalogue make reference to damage and/or restoration. Such information is given for guidance only and the absence of such a reference does not imply that a Lot is free from defects nor does any reference to particular defects imply the absence of others.

8. Value Added Tax

In the case of a lot marked with an asterisk (*) in the catalogue. VAT is payable on the Hammer Price. VAT is payable at the rates prevailing on the date of the auction.

9. Commission Bids

Absentee (Commission) bids will be executed as cheaply as any other bids or Vendors reserve allows and the Auctioneers accept no responsibility for the execution of Commission bids by any member of staff whatsoever.

B. VENDORS

1. Commission, Expenses & Reserves

- (a) Vendors commission is charged at the rate of 10% on all Lots selling for £10,000.00 or over and at the rate of 12.5% for Lots selling for under £10,000.00. The minimum charge for offering a Lot for sale is £10.00.
- (b) A handling fee of £1.00 per Lot will be charged on all Lots sold.
- (c) In respect of any unsold Lot the Auctioneer will charge 3% of the Vendors reserve or a minimum charge of £10.00 per Lot.
- (d) In the event an item is withdrawn from the auction at the instruction of the Vendor, for whatsoever reason a charge of £10.00 will be levied per item.
- (e) Lots may be offered subject to a reserve as agreed between the Auctioneer and vendor in writing and once agreed may only be changed with the consent of the Auctioneers.
- (f) The Vendor shall not bid on his own property nor employ any person to bid for him. The Auctioneer shall have the right to bid on behalf on the Vendor only up to the agreed reserve price.
- (g) Items failing to sell or withdrawn from sale at the instruction of the Vendor must be collected within three working days of the sale after which the Auctioneers reserve the right to send to storage any remaining goods at the sole expense of the Vendor and without notification.
- (h) V.A.T. Is chargeable at the standard rate on all of the Auctioneers charges.

(Continued on inside back cover)

ANGLING AUCTIONS

SALE OF
FISHING TACKLE
and
RELATED ITEMS

at the
**CROSFIELD HALL
BROADWATER ROAD
ROMSEY, HANTS
SO51 8GL**

on
SATURDAY, 10th April 2021
at 12 noon

Viewing
Friday 9th April, 1.30 p.m. – 7.00 p.m.
Saturday 10th April, 8.30 a.m. – 11.45 a.m.

Salesroom telephones
01794 523931 or 07785 281349/07871 398995
(viewing and sale days only)

Tel: 01794 518076 (not sale day)
Mobile: 07785 281349
Email: neil@anglingauctions.com

www.angling-auctions.com

Angling Auctions
30 Basepoint, Premier Way
Abbey Park, Romsey
Hants, SO51 9AQ



IMPORTANT NOTICE

DUE TO THE ON-GOING COVID 19 PANDEMIC SITUATION AND SUBSEQUENT GOVERNMENT GUIDELINES ON SOCIAL GATHERING, PLEASE CHECK WITH US NEARER THE DATE OF SALE AS TO WHETHER THIS AUCTION WILL BE OPEN TO THE PUBLIC OR OPERATED AS AN ON-LINE SALE ONLY.

IF WE ARE UNABLE TO HOLD A PUBLIC AUCTION, THEN ITEMS CAN BE VIEWED AT OUR OFFICES BY PRIOR ARRANGEMENT AND APPOINTMENT ONLY.

IF YOU REGISTER ON OUR WEBSITE AT:

WWW.ANGLINGAUCTIONS.COM

WE WILL KEEP YOU INFORMED OF ANY CHANGES VIA EMAIL

ALTERNATIVELY, YOU CAN CONTACT ME ON:

email: neil@anglingauctions.com

Tel. 01794 518076

Mob. 077885 281349

THANK YOU

NEIL FREEMAN, ANGLING AUCTIONS

RODS, REELS & ACCESSORIES

1

A scarce Hardy Perfect 3½" light salmon fly reel, ebonite handle, ribbed brass foot, revolving nickel silver line guide, milled nickel silver drum locking screw, rim tension screw and Mk.II check mechanism, faceplate block engraved previous owners initials, used condition, 1920's (see illustration)
£250-350



2

A Hardy Silex Major 3¾" bait casing reel, shallow cored drum with twin ebonite handles, jewelled spindle bearing and spring release latch, ribbed brass foot, rim mounted ivorine casting trigger and milled nickel silver tension screw with rear ivorine quadrant weight indicator, drum face engraved previous owners initials, light use, 1920's
£160-240

3

A Hardy Perfect 3¾" salmon fly reel, ebonite handle, ribbed alloy foot, revolving nickel silver line guide, milled rim locking screw, rim tension regulator and Mk.II check mechanism, light wear to enamel finish, 1950's
£200-300

4

A Farlow Python 4" salmon fly reel, composition handle, spring drum latch, alloy foot, rear sliding tension regulator, double chromed line guide, little used condition and in original blue card box and a Hardy Marquis No.2 salmon fly reel and spare spool, ribbed brass foot, spring drum latch and rear tension adjuster, used condition (2)
£100-150

5

A Hardy brass and ebonite 4½" salmon fly reel, domed cow horn handle, brass bridge foot, neatly reduced, twin German silver rims, quadruple cage pillars, fixed check mechanism, faceplate with raised two screw spindle boss and stamped enclosed oval logo, circa 1895, in Hardy Selvyt bag (see illustration)
£200-300



6

A Hardy Neroda bakelite low water salmon fly box, oxblood finish, interior fitted seventy spring clips and holding a selection of mainly small double salmon flies, 1940's
£120-160

7

A Hardy Super Silex 3¾” bait casting reel, shallow cored drum with twin ebonite handles, jewelled spindle bearing and spring release latch, ribbed brass foot, rim mounted ivorine casting trigger, milled tension screw and rear ivorine quadrant weight indicator, faceplate block engraved previous owners initials, used condition, circa 1930

£150-250

8

A Hardy Perfect 3¾” salmon fly reel, ebonite handle, brass foot, milled rim tension screw and Mk.II check mechanism, nickel silver drum locking screw, faceplate block engraved previous owners’ initials, used condition, in Hardy brown card trade box, 1920’s

£250-350

9

A Hardy Tweed salmon cast case, the faux crocodile leather case fitted three chamois leather cast pouches, twin stud fasteners and gilt stamped makers name, another similar cast case, three Hardy circular, copper, japanned and alloy cast cases, two Hardy crocodile mounts in boxes and three quill minnows (Q)

£100-150

10

A Hardy Brass Faced 4” salmon fly reel, domed ivorine handle, brass foot, modified brass cage and pillars with fitted heavy brass line guide, strapped rim tension screw with Turk’s head locking nut and 1906 calliper spring check mechanism, drum with four rim cusps and nickel silver locking screw, faceplate stamped Rod in hand trade mark and straight line logo, used condition, circa 1906 (see illustration)

£200-300



11

A Hardy Golden Prince 5/6 trout fly reel, brown anodised finish, composition handle, tow screw spring drum latch, nickel silver “U” shaped line guide and rear milled spindle tension adjuster, light use only, in zip case and a Greys “Streamflex” 4 piece carbon trout fly rod, 7’6”, #3, wooden reel seat, anodised screw grip fitting, light use only, in bag and cloth tube (2)

£140-240

12

A Hardy JLH Ultralite #5 trout fly reel, grey anodised finish, composition handle, alloy foot, two screw spring latch and rear spindle mounted tension adjuster, little used condition, in modern Selvyt bag and a Hardy “Demon” 3 piece carbon trout fly rod, 8’6” #5, screw grip reel fitting, light use only, in bag and cloth tube (2)

£160-260

13

A Hardy JLH Ultralite #6 trout fly reel, grey anodised finish, composition handle, alloy foot, two screw spring latch and rear spindle mounted tension adjuster, little used condition, in modern Selvyt bag and a Hardy “Ultralite” 2 piece carbon trout fly rod, 8’6”, #5, sliding alloy reel fitting, light use only, in bag and alloy tube (2)

£140-240

14

A good Hardy "Test" 2 piece glass fibre trout fly rod, 7'6", #4, green silk wraps, sliding alloy reel fitting, as new condition, made 2013, in bag, cork capped alloy tube and outer cloth case

£200-300

.....

15

A fine Tom Moran hand built 2 piece (2 tips) cane trout fly rod, 8', #5, light tan and crimson tipped silk wraps, mirrored tips, swollen butt section, olivewood reel seat with nickel silver sliding reel fitting, suction joint, butt cap stamped makers name, built to Garrison taper, serial no.965/3 and built in 1997, fished by previous owner only eight times and in excellent condition, with original bag and leather tube

£600-800

.....

16

A Hardy Princess trout fly reel, first series, limited edition no.20, brown anodised finish, composition handle, brass foot, two screw drum latch, milled rim tension screw and compensating check mechanism, light use only and a Hardy Princess trout fly reel, alloy foot, two screw drum latch, rim tension screw and nickel silver "U" shaped two screw line guide, used condition, in zip cases (2)

£140-180

.....

17

A pair of Hardy Marquis 6 trout fly reels, each with composition handle, alloy foot, two screw drum latch and rear mounted tension regulator, in zip cases, a Hardy "Deluxe" 2 piece carbon trout fly rod, 8'6", #6/7 and a Hardy "Favourite" 2 piece carbon trout fly rod, 8'6", #5/6, in bags, all in lightly used condition (4)

£140-240

.....

18

A pair of Orvis Battenkill Disc 5/6 trout fly reels, each with counter-balanced composition handle, chrome foot, spring drum latch and rear tension regulator button, very light use only and in original zip cases (2)

£100-150

.....

19

A modern English wicker trout fisher's creel, pot-bellied form, leather fastening strap, another modern trout fisher's creel, a Liddesdale canvas and leather trimmed trout bag and various other items including; an Airflo Outlander fly vest, new/unused, a Hardy Houghton leather cast case, a brass and alloy threadline casting reel stamped "Modern", various fly boxes, fly tying equipment and other items (Q)

£120-160

.....

20

A fine Paul Witcher "Aerial" 4" centre pin reel and block leather case, caged and six spoked drum with twin ivorine handles, eight perforations to front flange and rear mounted drum release spring fork, brass stancheon foot, rear sliding brass optional check button and calliper spring check mechanism, interior of backplate stamped limited edition number "10", made 2002, as new condition and with original Certificate (see illustration)

£700-1000



21

A J.W. Young Millennial Collection set of four miniature reels, ltd. ed. 50/200 and comprising four various models; Microdex, Microfly, Micropin and Microplate reels mounted in teak and glazed display case with brass name plates and an individual Young's Microdex reel in leather case

£120-160

.....

22

A Hardy Sunbeam 3¼" trout drum fly reel, exposed drum with ebonite handle and nickel silver locking latch, brass stancheon foot, brass Bickerdyke line guide and fixed Mk.I check, light wear to finish from normal use, in Hardy brown card trade box, 1920's
£130-180

.....

23

A Hardy Altex No.2 Mk.III fixed spool reel, ebonite folding handle, full bail arm, ebonite spool with four point tension adjuster, 1940's and a Hardy Sunbeam 3" trout dry fly reel, ebonite handle and nickel silver locking latch, brass stancheon foot, brass Bickerdyke line guide and fixed Mk.I check, 1920's, both in used condition (2)
£130-180

.....

24

A Hardy Neroda bakelite salmon fly box, oxblood finish, interior fitted forty metal spring clips and holding a selection of 14 large fully dressed salmon irons and a Hardy Neroda trout fly box, interior fitted chenille bars holding a selection of small salmon/sea-trout patterns, 1940's (2)
£140-240

.....

25

A fine Saracione Mk.IV Alta 4¾" salmon fly reel, left hand wind model with black anodised finish, counter-balanced serpentine crank handle, alloy foot, multi-perforated drum and face plate, rear sliding optional check button and spindle mounted milled tension adjuster, some light marks to lower rim otherwise excellent overall condition, in box and neoprene pouch (see illustration)
£500-800



26

A good LTS "Across II" 4 piece carbon salmon fly rod, 15', #10-12, black anodised screw grip reel fitting, as new condition, in bag and cloth tube
£400-600

.....

27

A good Abel Super 7/8N trout/salt-water fly reel, left hand wind model with black anodised finish, counter-balanced rosewood handle, multi-perforated shallow cored drum and backplate, rear spindle mounted tension adjuster, as new condition, in card box and pouch
£200-300

.....

28

A Hardy St George 3" trout fly reel, ebonite handle, alloy foot, white gate line guide (3 hairline cracks), two screw spring drum latch, rim tension screw and Mk.II check mechanism, lacking spare pawl, wear to enamel finish from normal use, 1950's
£200-300

.....

29

A scarce Hardy Fly Reel 3¾" trade trout fly reel, solid alloy drum with waisted xylonite handle and domed brass locking screw, brass foot, fixed Mk.II check mechanism, backplate stamped make and model details, wear from normal use, 1940's
£200-300

.....

30

A fine Hardy Brass Faced Perfect 4" salmon fly reel, domed ivory handle, pierced alloy foot, strapped rim tension screw with Turk's head locking nut and early calliper spring check mechanism, slightly dished drum with four rim cusps and milled nickel silver locking screw, faceplate stamped Rod in Hand trade mark, enclosed oval and straight line logos, reel retains much of the dark bronze patina, circa 1900 (see illustration)
£500-800



31
A good Hardy Silex 4¼” bait casting reel, caged drum with twin ivorine handles mounted on shaped alloy cross-bar winding arm, jewelled spindle bearing and spring release latch, brass bridge foot, cut-away rim section and three rim mounted casting controls, backplate stamped make and model details, reel retain much of the original dark lead finish, circa 1899
£160-240

32
A rare Hardy Perfect 2¾” wide drummed trout fly reel, ivorine handle, brass foot, strapped rim tension screw and early calliper spring check mechanism, slightly dished drum with four rim cusps and milled nickel silver locking screw, faceplate stamped open oval and straight line logos, light wear from normal use, circa 1900 (see illustration)
£700-1000



33
A W. Mills & Son “H. L. Leonard” C. Farlow & Co. Ltd. (retailer) 3 piece (2 tips) cane trout fly rod, 11’4”, crimson silk minter-whipped, nickel silver sliding reel fitting stamped makers details, butt cap engraved retailers details, swollen butt section, nickel silver spigot joints and raffia bound grip, replacement butt ring and some whippings requiring attention, in bag and with brass capped burnt bamboo tip tube, circa 1900
£180-260

34
A Leonard & Mills “H.L. Leonard” 3 piece (4 tips) cane trout fly rod, 10’, scarlet silk inter-whipped, sliding nickel silver reel fitting, swollen butt section, nickel silver spigot joints, in bag and with brass capped bamboo tip tube
£200-300

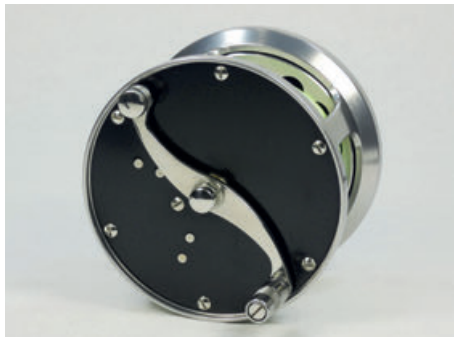
35
A scarce Farlow “Lee Wulff Ultimate” one piece armour cane brook trout rod, 5’ 10¾”, 1½oz, blue silk wraps, sliding alloy reel fittings, good overall condition, in bag
£150-200

36
A good Sharpe’s “Eighty Five” 2 piece cane trout fly rod, 8’5”, #5/6, green/crimson tipped silk wraps, alloy screw grip reel fitting, staggered ferule, suction joint, little used condition, in bag
£130-180

37

A Loop Classic 811 salmon fly reel, right hand wind model with black anodised end plates, serpentine counter-balanced serpentine scroll handle, one piece alloy cage with block foot, rear spindle mounted milled tension adjuster, little used/as new condition, in original block leather case and card box (see illustration)

£350-450



38

An Ari't Hart Tweed salmon fly reel and two spare spools, right hand wind model with brushed steel finish, counter-balanced handle, full annular wire line guide, stancheon foot, multi-perforated drum and rear plate with six large ventilation ports, rear spindle mounted tension adjuster and sliding optional check button, red stamped logo and numbered "434", used condition and in original zip leather cases

£250-450

39

A Hardy Perfect 3 7/8" light salmon/trout fly reel, ebonite handle, ribbed brass foot, white agate line guide (no cracks), nickel silver milled rim tension screw and Mk.II check mechanism, light wear from normal use only, circa 1930

£180-260

40

A fine Hardy Brass Faced Perfect 4" salmon fly reel, domed ivory handle, pierced brass block foot, strapped rim tension screw with Turk's head locking nut and 1906 calliper spring check mechanism, fixed brass framed line guide, slightly dished drum with four rim cusps and milled nickel silver locking screw, faceplate stamped Rod in Hand trade mark and straight line logo, reel shows only very light signs of use and is in virtually unused condition, circa 1906, fully factory re-finished and in Hardy Selvyt reel bag (see illustration)

£600-900

41



A good Hardy Perfect 4" salmon fly reel, ivory handle, brass bridge foot, revolving nickel silver line guide, rim mounted milled tension screw and Mk.II check mechanism, nickel silver drum locking screw and faceplate stamped central circular logo, only light wear to original lead finish, circa 1920

£300-400

42

An Ari't Hart Tweed salmon fly reel and spare spool, right hand wind model with brushed steel finish, counter-balanced handle, full annular wire line guide, stancheon foot, multi-perforated drum and rear plate with six large ventilation ports, rear spindle mounted tension adjuster and sliding optional check button, red stamped logo and numbered "421", light wear from normal use only and in original zip leather cases (see illustration)

£250-450



43
An Abu Ambassadeur 6000c bait casting reel, black finish, chamfered rims, rear sliding optional check button, foot stamped "731002", in original rexine case, an Ari't Hart spare spool for Rio Orbigo(?) trout reel in zip case, two small brass trout winches and a small quantity of various other items including a leather trimmed canvas trout fisher's bag (Q)

£100-150

44
A good Hardy Neroda bakelite waistcoat trout fly box, oxblood finish, interior fitted fifty one spring clips and holding a selection of various wet flies and another Neroda type waistcoat fly box, tortoiseshell finish, interior fitted ivorine plates and fifty one spring clips, also with a good selection of trout flies, 1940's (2)

£140-240

45
A scarce Hardy Perfect 3½" light salmon fly reel, domed ivorine handle, brass foot, strapped rim tension screw and late 1906 calliper spring check mechanism, drum with four rim cusps and milled nickel silver locking screw, faceplate stamped central circular logo, light wear to lead finish only, circa 1908 (see illustration)

£350-550



46
An Aaron 7/8 trout fly reel, left hand wind model with black anodised finish, counter-balanced rosewood handle, rear spindle mounted tension adjuster, light use only, in zip case and a Reddington "TSF" 4 piece carbon trout fly rod, 9', #8, green silk wraps, screw grip reel fitting, in cloth tube (2)

£140-180

47
A Hardy Neroda bakelite mayfly trout fly box, tortoiseshell finish, interior fitted chenille bars and holding an extensive collection of trout/loch style wet flies and a similar Hardy Neroda trout fly box, chenille interior and also holding an extensive collection of small trout dry flies, 1940's (2)

£140-240

48
A rectangular leather tackle hold-all, green baize lined interior with compartmentalised base and lift-out tackle tray, lacking handle and securing straps, holding a selection of various items including an Abu Ambassadeur 6500c bait casting reel, fitted Bass-Pro power handles and with spare spool, various Kynoch Killer and Lucky Louie salmon baits, various salmon and trout flies and other items (Q)

£140-240

49

A Walker Bampton “Pratto Perfection” 2 piece spliced cane light salmon fly rod, 12’, dark green silk wraps, sliding alloy reel fitting and a similar Walker Bampton “Special Spliced” 2 piece spliced cane grilse rod, both in bags (2)
£150-250

** please note due to the length of these rods the successful buyer will have to either collect from our offices or we can arrange for courier delivery

50

A fine and rare Hardy Barton 3¼” trout fly reel, reverse tapered ebonite handle, off-set ribbed brass foot, three screw spring drum latch, rectangular nickel silver line guide, milled rim tension screw and Mk.II check mechanism, interior stamped “J.S.” (Jimmy Smith), backplate stamped make and model details, reel retains much of the original dark lead finish, made 1939-39 only (see illustration)
£1500-2000



51

A scarce Hardy Hercules 2½” brass trout fly reel, domed ivorine handle on raised winding plate, bridge foot, triple cage pillars, fixed check mechanism, faceplate with domed iron locking screw on raised spindle boss and stamped Rod in Hand trade mark and open oval logo, light wear to bronze patina, circa 1895
£200-300

52

A good Hardy Nottingham 4½” centre pin reel, walnut drum with twin horn handles and brass telephone drum locking latch, rim mounted Silex type release lever, Brass Bickerdyke line guide, starback foot, stamped makers details, very good overall condition, circa 1910
£160-260

53

A scarce Hardy St George 3⅝” trout fly reel, shallow cored drum with ivorine handle and three screw drum latch, unusual striated white agate line guide (two hairline cracks), alloy foot, milled rim tension screw and Mk.II check mechanism, light wear from normal use, 1920’s (see illustration)
£300-400



54

A scarce Hardy Perfect 3½” light salmon fly reel, “eunuch” model (no ball bearings) with ivorine handle, alloy foot, milled rim tension screw and Mk.II check mechanism, faceplate stamped central circular logo, only light wear from normal use, circa 1920
£300-500

55

A fine and rare Hardy Bouglé 3” “spitfire” finish trout fly reel, ebonite handle, alloy foot, triple raised pillars (one nickel silver roller), milled rim tension screw and Mk.II check mechanism, interior stamped “J.S.” (Jimmy Smith), faceplate stamped make and model details, reel is in overall excellent condition, late 1930’s (see illustration)
£1600-2400



56

A scarce Riccardi 2 piece (2 tips) cane trout fly rod, 8'1", #5, green/crimson tipped silk wraps, sliding alloy reel fitting, staggered ferrule, suction joint, made 1976, very light use only, in bag

£200-300

57

A Hardy "LRH Dry/Wet" 3 piece (2 tips) cane trout fly rod, 9'3", green/crimson tipped silk wraps, alloy screw grip reel fitting, suction joints, 1953, slight crazing to some varnish otherwise good condition, in bag

£180-260

58

A Hardy "Koh-i-Noor" 2 piece cane trout fly rod, '9", crimson silk whippings, sliding alloy reel fitting, suction joint, 1959, re-varnished, in bag

£130-180

59

A Riccardi "Magnum T" 2 piece carbon fly rod, 9'2", #9/10, gold/black tipped wraps, anodised screw grip reel fitting and a Riccardi "GPH Lux" 2 piece fly rod, 9', #8/9 of similar design, wooden reel seat, in bags (2)

£100-150

60

A good Abel Super 7/8N trout/salt-water fly reel, left hand wind model with black anodised finish, counter-balanced rosewood handle, multi-perforated shallow cored drum and backplate, rear spindle mounted tension adjuster, as new condition, in card box and pouch (see illustration)

£200-300



61

A good Abel Super 7/8N trout/salt-water fly reel, left hand wind model with black anodised finish, counter-balanced rosewood handle, multi-perforated shallow cored drum and backplate, rear spindle mounted tension adjuster, as new condition, in card box and pouch

£200-300

62

An Orvis DXR Multiplier 9/10 salmon/salt-water fly reel, left hand wind model with black/gold anodised finish, counter-balanced handle, rear eleven point tension adjuster, only very light use, in original zip case

£100-150

63

A C. Farlow & Co. Ltd. black japanned trout fly reservoir, the rectangular cabinet with fall front door, revealing six drawers each with cream painted interior, brass loop handle, celluloid sliding lids and various fly compartments and holding a large selection of various trout fly patterns, base drawer requiring a new hinge rod, outer case with sliding pin lock to door and brass loop carry handle, applied trade plaque to lid interior, 8½" x 7" x 5", circa 1920 (see illustration)
£300-400



64

A large collection of steelhead/salmon flies, contained in various teak and other fly boxes and including marabou streamer, egg and dry/bomber patterns, in excess of 600 flies in total (Q)
£130-180

65

A fine Richard Carter Aerial Perfection 4" centre pin reel, caged and six spoked drum with twin composition handles, perforated front flange (ten holes) and twin regulator/release forks, ribbed brass foot, rear sliding brass optional check button and bar spring check mechanism, leaded finish, new/unused condition and sold with optional B.P. line guide (requires fitting), in original card box and with certificate dated 1998 (see illustration)
£600-900



66

A collection of thirty Harcourt floats, various sizes and colours, ranging in size from 3" – 8", each with model name painted on stem, in perspex display case, 1950's
£90-130

67

A boxwood four section float and line winder, turned bone spindles and holding four early quill floats, another four section float and line winder with central shot and cap compartments, three treen single section float and line winders and a quantity of various floats including pike bungs, two Allcock Streamsearch, Avons, perch/grayling bobbers et al (Q)
£120-160

68

A fine David Brown Aerial style 3½" wide drummed centre pin reel, polished alloy finish, caged and six spoked drum with twin tapered xylonite handles, double ventilated flanges, each with twelve holes, single drum release form, brass stancheon foot, rear sliding optional check button and calliper spring check mechanism, as new condition, circa 2015 (see illustration)
£400-600



69

A scarce Hardy "Match Roach" 3 piece whole and built cane float rod, 11', green silk inter-whipped, sliding brass reel fittings, agate line butt and tip rings, suction joints, circa 1937, very good condition, in bag
£130-180

.....

70

A Hardy "Sheffield Surestrike" 3 piece whole and built cane float rod, 12', black silk wraps, sliding bronze brass reel fittings, suction joints, stand-off rings, 1953, as new condition, in later bag
£130-180

.....

71

A Hardy "Surestrike" 3 piece whole and built cane coarse rod, 10'6", black silk whippings, sliding bronzed brass reel fittings, suction joints, agate lined butt and tip rings, very good condition, in later bag
£120-160

.....

72

A Hardy Silex Major 3½" bait casting reel, shallow cored drum with twin ebonite handles, jewelled spindle bearing and spring release latch, ribbed brass foot, rim mounted ivorine casting trigger, milled nickel silver tension screw and rear mounted ivorine quadrant weight indicator, light wear to lead finish only, 1920's
£140-240

.....

73

A J. McGowan, London 3¾" brass loch trolling winch, tapered horn handle on waisted straight crank winding arm with domed iron locking screw, block foot, quadruple raised pillars (two double roller), rear raised check housing and fixed check mechanism, faceplate stamped makers details, reel retains much of the original dark bronze patina, circa 1885
£200-300

.....

74

A 19th Century 4" brass wide drummed salmon winch, turned bone handle on curved crank winding arm with domed iron locking screw, block foot, triple cage pillars, rear raised check housing and fixed check mechanism, circa 1870
£140-240

.....

75

A very rare Allcock cut glass 2½" bait, the double sided facet cut glass body claw mounted on a nickel silver fish shaped panel with twin head spinning vanes, one rear and two gimp mounted head flying treble hooks, box head swivel, small hairline crack to one side panel, circa 1880 (see illustration)
£1000-1500



76

A Scarce Bazin 3½" gutta percha minnow bait, the fish shaped body with brown/gold painted decoration, incised scale pattern, amber/black spot glass eyes, twin gimp mounted flying treble hooks, metal tail stamped makers details, and a Peel, Redditch 4" Pearl Minnow bait, the fish shaped gutta percha lure with painted decoration, nickel silver twin tail spinning vanes, stamped makers details and rear gimp mounted treble hook and with rear gimp mounted treble hook, circa 1880 (2)
£250-350

.....

77

A Hardy Don combined landing net and wading staff, folding alloy "V" armed net with spring loaded brass knuckle joint, mounted on brass collared bamboo staff, and two Hardy bamboo wading staffs each with twine grip, metal thumb crutch, rope lanyard and steel boathook toe (3)
£120-160

.....

78

A scarce Otto Zwarg Saguenay 1/0 direct drive light salmon fly reel and block leather case, ebonite and nickel silver construction, tapered ebonite handle on serpentine crank winding arm set within an anti-foul rim, pieced alloy foot stamped model details and date code for 1948, triple cage pillars (two double roller), milled sliding optional check disc to faceplate and rear spindle mounted seven point graduated tension adjuster, light wear from normal use only, case with stud locking flap, circa 1948 (see illustration)
£1300-1600



81

A scarce Hardy Super Silex 3 1/4" bait casting reel, slotted core, shallow drum with twin ebonite handles, jeweled spindle bearing and spring release latch, ribbed brass foot, rim mounted ivorine casting trigger, milled tension screw with rear ivorine quadrant weight indicator and 1929 additional drum release latch, wear from normal use only, circa 1930
£200-300



82

A rare Hardy Match Fishers 3 1/4" turntable reel, circular drive plate with twin ebonite handles, swivelling ribbed brass foot with steel finger pick-up line guide, backplate stamped make and model details, light use only, made 1937-39 only (see illustration)
£300-400

79

A Hardy St George 3 3/4" trout fly reel, ebonite handle, ribbed brass foot, white agate line guide (no cracks), rim mounted rim tension screw and Mk.II check mechanism, light wear to lead finish from normal use, 1930's
£140-240

80

A rare Hardy Davy 3 1/2" trout fly reel, contracted drum with multi-perforated front plate, twin ebonite handles and nickel silver telephone drum latch, ribbed brass foot, rim mounted milled tension screw and Mk.II check mechanism, backplate stamped make and model details, light wear to finish from normal use, made 1930-39 (see illustration)
£1200-1600



83

A scarce Hardy Wallis No.2 pattern 3½" centre pin reel, shallow cored solid alloy drum with twin reverse tapered ebonite handles and nickel silver telephone drum latch, ribbed brass foot, rim mounted nickel silver optional check lever and bar spring check mechanism, light wear only, circa 1935
£250-450

84

A good Allcock salesman's folio of High Grade Trout flies, the rectangular rexine case opening to reveal five panels of ninety six various trout patterns to gut casts displayed on red printed trade cards, cover with gilt stamped Stag logo and makers details, 9½" x 8" x ¾", circa 1915
£200-300

85

A good C. Farlow & Co. rectangular leather salmon tackle hold-all, interior fitted five lower reel compartments and lift-out tackle tray, brass hasp lock, twin wrap-arounds straps, front panel stamped makers details and black stamped previous owners details to top, 20" x 13" x 9" overall, circa 1890 (see illustration)
£300-500



86

A scarce Victorian sterling silver vesta case in the form of a woven reed fishing creel, tapered oval form, hinged lid with relief decoration of a naturalistically painted trout lain upon on a grassy bank within a gilt border and beneath a cut and bevelled glass cover, interior with strike panel to lid interior, hall marked London 1883 and makers mark for London silversmith Thomas Johnson II, 3" wide, 1¾" high, circa 1884
£150-250

87

A very rare Hardy No.1 Drop Knife, the square cylindered nickel silvered body engraved hook gauge, inch measure, model and makers details and with a spring loaded cap at each end which releases a John Watt's, Sheffield steel blade, very good condition, circa 1915 (see illustration)
£700-1000



88

Thomas & Thomas "Apex 909" 4 piece salt-water fly rod, 9', #9, green silk wraps, alloy screw grip reel fitting, in bag and cloth covered tube
£130-180

89

A Thomas & Thomas "Apex 908" 4 piece salt-water fly rod, 9', #8, green silk wraps, alloy screw grip reel fitting, in bag and cloth covered tube
£130-180

90

A fine and rare 18th Century steamed leather pot-bellied trout fisher's creel, hand stitched swollen base with two rear and two lower belt loops, brass hinged lid with oval fish hole, leather tab latch and stamped previous owners name "R. Morsom", one lid hinge loose, 13" wide, 6½" high (see illustration)

£2500-3500



91

A pair of C19th Century polychrome diptych painted tiles depicting a pike attacking roach within an aquatic setting, indistinctly signed, set in gilt painted frame, 7¼" x 13" overall

£200-300

92

A fine and rare Edwardian framed glass advertising plaque, gilt lettered "Fishing Tackle, Minnows, Spoons, Flies and Preserved Baits, dark mahogany backboard and mounted within a heavy mahogany frame, 19½" x 29" overall (see illustration)

£700-900



93

A Ross Rhythm 1.5 trout fly reel, left hand wind model with black anodised finish, counter-balanced handle and rear spindle mounted tension adjuster, as new condition and a Sage "DS2 476" 2 piece carbon brook trout fly rod, 7'6", #4, black silk wraps, screw grip reel fitting with rosewood seat, light use only, in cloth covered tube (2)

£140-240

94

A Ross Rhythm 2 trout fly reel, left hand wind model with black anodised finish, counter-balanced handle and rear spindle mounted tension adjuster, as new condition, in original pouch and a Sunray Microslik #6 floating line, in box (2)

£130-180

95

A rare Warner's of Redditch Bickerdyke pike fisher's combination priest the brass cylindrical priest with fruitwood knopped stud locking cap fitted with "V" disgorger and containing a further calliper scissor gag stamped with 12" ruler to one side, drop bar latch, outer case stamped makers details, a very rarely seen combination priest, some dents to outer brass sleeve and in used condition, 9" long, circa 1910 (see illustration)

£300-500



96

A good Hardy Birmingham 3¼" brass trout fly reel, domed cow horn handle, bridge foot, quadruple cage pillars, fixed check mechanism, faceplate with raised two screw spindle boss and stamped open oval logo, reel retains virtually all the original dark bronze patina, circa 1895

£160-240

97

A scarce Hardy Perfect 3½” trout fly reel, ivorine handle, brass foot, red agate line guide (no cracks), strapped rim tensions crew and 1906 calliper check mechanism, contracted drum with four rim cusps and milled nickel silver locking screw, faceplate stamped central circular logo, light wear from normal use, circa 1908 (see illustration) **£350-550**



98

A Hardy Brass Faced Perfect 4½” salmon fly reel, domed ivorine handle, brass foot, strapped rim tension screw with Turk’s head locking nut and 1906 calliper spring check mechanism, drum with four rim cusps and milled nickel silver locking screw, faceplate stamped Rod in Hand trade mark and straight line logo, wear from normal use only, circa 1908 **£500-800**

99

A good Hardy Birmingham 2½” brass trout fly reel, tapered horn handle, bridge foot, triple cage pillars, fixed check mechanism, faceplate with raised two screw spindle boss and stamped enclosed oval logo, very light scratched initials to backplate, retaining much of the original bronze patina, circa 1896 **£150-250**

100

An extremely rare Hardy 1891 Brass Perfect “Economy” model 2½” wide drummed trout fly reel, tapered antler horn handle, stancheon foot pierced three holes, nickel silver wire half line guide mounted on two raised rim lugs, solid dished drum with central spindle recess, fixed calliper spring check mechanism and no ball bearing race, faceplate stamped Rod in Hand trade mark and central 612 patent details, small, old chip to horn handle otherwise reel is in good overall condition and is only the second version of this model we have seen (previous reel was sold by Angling Auctions in April 2019), a very rare opportunity to acquire one of the rarest of all the Brass Perfect range, circa 1891/2 (see illustration) **£6000-9000**

** John Drewett notes in his book *Hardy Brothers, the Masters, The Men and Their Reels* (pg. 120) that a handwritten note in the 1891 factory catalogue indicated, for a reduction of 4/- per size, Perfect reels could be purchased as an economy version i.e. less regulator, ball bearings and drum perforations, J.D. goes on to surmise that there is a very strong likelihood only very few of these models were actually produced as most Hardy clients were affluent enough to afford the more expensive fully furnished option



101

A Hardy Perfect 4" salmon fly reel, ebonite handle, ribbed brass foot, milled rim tensions crew and Mk.II check mechanism, drum with nickel silver locking screw, wear to enamel finish from normal use, 1950's
£250-350

102

A scarce Hardy "Halford Priceless" 3 piece (2 tips) cane trout fly rod, 10'3", broad crimson inter-whipped, sliding nickel silver reel fitting, cedarwood strip inlaid handle, wooden butt cap with reversible spear, lockfast joints, pentagonal tip sections, 1897, spare tip repaired and rod requiring some restoration with bag (a.f.) and bamboo tip tube, lacking cap
£130-180

103

A Hardy "Wye" 3 piece (2 tips) cane salmon fly rod, 13'6", crimson inter-whipped, sliding alloy screw grip reel fitting, lockfast joints, 195, some re-whippings and a Hardy "Wanless 9/10lbs" 2 piece cane salmon spinning rod, 8', green/crimson tipped wraps and green inter-whipped, sliding alloy reel fittings, suction joint, 1955, in bag (2)
£140-180

104

A collection of eight various built and whole cane trout and salmon fly/spinning rods, various makes including Walker Bampton, Sharpe's, Milward's et al, in bags (8)
£100-200

105

A Hardy St George 3" trout fly reel, ebonite handle, alloy foot, white agate line guide (no cracks), two screw spring drum latch and Mk.II check mechanism, light wear to enamel finish from normal use only, 1950's (see illustration)
£200-300



106

A Hardy LRH Lightweight trout fly reel, composition handle, alloy foot, two screw spring drum latch, rim tension screw and compensating check mechanism, as new condition in zip case and card box and a similar Hardy Flyweight trout fly reel, also in as new condition and in zip case (2)
£150-200

107

A Hardy Perfect 3 3/8" trout fly reel, ebonite handle, alloy foot, milled rim tensions crew and Mk.II check mechanism, light wear to enamel finish from normal use, 1960's
£140-180

108

A Hardy St Andrew salmon fly reel, composition handle, ribbed alloy foot, two screw spring drum latch, rim tension screw and compensating check mechanism, two screw nickel silver "U" shaped line guide, wear from normal use and a Hardy "Wye" 2 piece (2 tips) cane light salmon fly rod, 11', re-whipped with green silk wraps and crimson inter-whippings, sliding alloy screw grip reel fitting, lockfast joint, 1965, spare tip short, in bag (2)
£160-240

109

A Hardy Princess trout fly reel and spare spool, composition handle, alloy foot, two screw spring drum latch, rim tension screw and compensating check mechanism, two screw nickel silver "U" shaped line guide little used condition, in zip case and a Sharpe's "Aberdeen" 3 piece cane trout fly rod, 9', #6, crimson silk wraps, screw grip reel fitting, in bag (2)

£140-180

110

A Hardy Marquis 7 trout fly reel, composition handle, alloy foot, two screw drum latch, rear tension regulator, in zip case, a Hardy Viscount 140 Mk.II trout fly reel and two Hardy fibre glass trout fly rods; an Invincible Fly, 9', #6 and a Jet 9', m#7, in bags (4)

£140-180

111

A Pezon et Michel (Farlow's) "Super Parabolic Fario Club" 2 piece cane trout fly rod, 8'5", green/crimson tipped silk wraps, anodised screw grip reel fitting, staggered ferrule, suction joint, in bag

£140-240

112

A Pezon et Michel (Farlow's) "Super Parabolic Longcast" 2 piece cane trout fly rod, 8'7", #6/7, green/crimson tipped silk wraps, anodised screw grip reel fitting, staggered ferrule, suction joint, in bag

£140-240

113

A Sharpe's "Featherweight" 2 piece brook trout rod, 7'6", #5, crimson silk wraps, sliding alloy unreel fitting and another similar Sharpe's Featherweight rod, 7'6", #4/5, in bags (2)

£130-180

114

Five various Bruce & Walker glass fibre trout fly and spinning rods including; True Brook, CFR Reservoir Trout, LLV Loch et al, in bags (5)

£120-160

115

An Abu Ambassadeur 6000 bait casting reel, red finish, grooved rims, in original rexine case, an ABU 505 closed face reel and a quantity of various other fishing tackle including, five Abu glass fibre rods, various fly boxes and flies, Devon minnows and other baits, bait mounts, a Hardy folding grilse net, a large Brady canvas salmon bag and other items (Q)

£130-180

116

A Hardy Compact folding line drier, adjustable alloy arms, wooden handle, a Hardy Neroda bakelite waistcoat fly box, tortoiseshell finish, interior fitted chenille bars and a brass extending sea-trout combined gaff/priest (3)

£140-180

117

A scarce Hardy Neroda bakelite tube fly box, oxblood finish, interior fitted nickel silver plates and forty eight spring locking fly holders, holding a selection of tube flies, various patterns (see illustration)

£160-240



118

A good pair of Hardy Neroda No.2 bakelite sea trout/trout fly boxes, oxblood finish, each fitted 119 spring metal fly clips and holding a good selection of trout and sea-trout patterns, 1940's (2)

£180-260

119

A Hardy Neroda bakelite Drywet trout fly box, tortoiseshell finish, interior fitted chenille bar fly holders and with a good selection of various trout and sea trout flies and a similar box holding a good selection of smaller trout patterns, 1940's (2)

£150-200

120

A fine Edward Vom Hofe Restigouche 6/0 direct drive salmon fly reel and block leather case, ebonite and nickel silver construction, serpentine counter-balanced crank wind handle set within an anti-foul rim, pierced foot stamped model details, date code for 1926 and engraved "3", quadruple cage pillars (two double roller), milled optional check disc to front plate, rear spindle mounted seven point tension adjuster with arched bar indicator, spindle cover stamped Jan '83 patent details, good overall condition, 1926 (see illustration)

£1200-1600



121

A scarce Wallace Watson 4" alloy bait casing reel, shallow cored drum with twin xylonite handles and ventilated arbour, brass foot, rim mounted xylonite casting trigger and two further casting controls, three further brass button tension/casting regulators, faceplate stamped retailers details for Fosters of Ashbourne and back plate with make and model details, 1920's

£160-240

122

A Bembridge Floatsafe ivory float case, cylindrical form with crimson whipped decoration, hand painted "Floats & Quills" and model details, 6¾" long, holding a selection of twenty swan, porcupine and balsa quill/stick floats

£130-180

123

A rare 19th Century extra-large wide drummed spike fitting winch, 3¾" diameter and 4½" wide, turned treen handle on curved crank winding arm with iron locking pin, brass block foot with tapered square iron spike fitment and brass butterfly locking nut, triple cage pillars (one pillar lacking), chips to handle, used condition, exceptionally large example, possibly of Scottish origin, circa 1840 (see illustration)

£500-700



124

A C19th Century brass clamp fitting winch, bone handle on curved crank winding arm, triple cage pillars, block foot with rivetted clamp fitting with lyre tail locking screw, one foot locking pin missing, 1¾" diam., circa 1850

£160-240

125

A very rare Ustonson 3¼" brass reversible handle salmon winch, turned bone handle on straight crank winding arm with milled disc locking, cut-away rim recess to take handle when reversed for storage, triple cage pillars, rear raised check housing, fixed check mechanism, rivetted block foot, pierced to take leather pad, faceplate script engraved "Ustonson, Maker, Temple Bar, London", a rarely seen model dating from circa 1840 (see illustration)

£3000-5000



126

A Malloch black japanned rectangular salmon fly box, cream painted interior fitted swing leaf and nickel silver spring clips, holding a selection of eighty five fully dressed salmon flies, interior circular cast compartment and ink stamped retailers' detail for C. Farlow & Co. Ltd., circa 1900

£160-240

127

A scarce Victorian white metal 3½" turbine bait, the tapered hollow fish shaped body with raised spiral blade, traces of painted head decoration and twisted gut trace with two rear treble hooks, circa 1850

£300-400

128

A rare un-named Gregory Cartman 3" brass bait, the half fish shaped lure with amber/black spot glass eye, twin spinning vanes, mounted on leaded revolving spindle with loop eye and rear treble, circa 1890 (see illustration)

£700-1000



129

An Allcock Dazzle bait, the 2½" bait with five twin blade spinning vanes, twin red glass bead stops and central revolving spindle with barrel swivel and rear treble, two Fosters Kill Devil brass 2½" baits, one with painted decoration and a brass 2" minnow bait with extra-large spinning vanes (4)

£90-130

130

A very rare Gregory Windsor Bee 2¾" bait, the nickel silvered fish shaped lure with seven section stepped body, twin amber/black spot glass eyes, incised scale decoration, rear twin tail spinning vanes, one stamped makers name and one diamond registration mark, loop eye head mounted with box swivel, two side mounted and one rear treble hooks, one of the most sought after of collectable baits, circa 1880 (see illustration)

£2500-3500



131

A fine Malloch 3½” alloy side casting reel, tapered cow horn handle, swivelling brass foot with integral line guide and Gibbs patent horn handled locking lever, reversible drum and rim mounted optional check lever, faceplate stamped oval logo, as new condition and in metal edged card box, circa 1930

£120-160

132

A Wheatley rectangular alloy salmon fly box holding a good selection of larger fully dressed salmon irons including eagle patterns and three further Wheatley alloy fly boxes holding a good selection of various fully dressed and low-water salmon flies (4)

£120-160

133

A 19th Century folding salmon gaff, turned treen handle, brass folding knuckle joint and firth steel gaff head, circa 1880, a brass extending combined sea-trout gaff/priest, a Farlow “150” ltd. ed. priest, no.115/150, in cloth bag, a Hardy Hotspur line drier and a small quantity of other items (Q)

£100-150

134

A Thomas & Thomas “Gaula” 3 piece carbon salmon fly rod, 14’, #11, black silk wraps, alloy screw grip reel fitting, spigot joints and a Thomas & Thomas “Spey” 3 piece carbon salmon fly rod of similar design, both in bags and alloy tubes (2)

£140-240

135

A good Loomis “GLX” 3 piece carbon salmon fly rod, 13’, #8/9, black silk wraps, anodised screw grip reel fitting, light use only, in bag

£100-150

136

A Thomas & Thomas “H586145” 2 piece carbon salt-water fly rod, 8’6”, #14, blue silk wraps, anodised screw grip reel fitting, butt extension handle and a Thomas & Thomas “HS9125” 2 piece carbon salt-water fly rod, 9’, #12, similar design, in bags (2)

£200-300

137

A Hardy “Deluxe” 3 piece carbon salmon fly rod, 15’4”, #10, crimson/scarlet tipped whippings, anodised screw grip reel fitting and a Hardy “Favourite” 3 piece carbon salmon fly rod, 16’, #11, purple silk wraps, sliding alloy screw grip reel fitting, used condition, in bags (2)

£100-150

138

A rare Hardy Field 3½” trout fly reel, domed ivory handle on lipped winding plate, brass bridge foot, triple pillared annular cage, fixed check mechanism, faceplate with raised two screw brass spindle boss and stamped model name, backplate stamped Rod in Hand trade mark and enclosed oval logo, light wear to finish from normal use only, circa 1896 (see illustration)

£500-700



139

A good Hardy Nottingham 5” centre pin reel, walnut drum with twin horn handles and recessed brass telephone drum latch, brass Bickerdyke line guide, starback foot with sliding optional check button, stamped makers details and with calliper spring check mechanism, very good condition, circa 1910

£200-300

140

A rare Hardy St George Multiplier 3½” trout fly reel, ebonite handle on on-set circular drive plate, ribbed brass foot, white agate line guide (no cracks), three screw spring drum latch, wear to lead finish from normal use, circa 1930 (see illustration)

£500-700



141

A scarce Hardy Super Silex 3½” bait casting reel, shallow cored drum with twin ebonite handles, jewelled spindle bearing and spring release latch, ribbed brass foot, cut-away rim section, rim mounted ivorine bar casting trigger, milled tension screw and rear quadrant weight indicator, backplate fitted with additional ivorine tension regulator with nickel silver adjusting arm, circa 1928
£200-300

142

A rare Hardy Bethune trout line drier, four brass flared and threaded arms mounted onto spring loaded spindle with horn handle on curved crank winding arm, ogee shaped brass support and tapered wooden handle with brass “W” reel fitting, support stamped makers details, very good condition, circa 1900 (see illustration)
£200-300



143

A Thomas & Thomas “Apex” 3 piece carbon salt-water fly rod, 9’, #10, blue silk wraps, alloy screw grip reel fitting, in bag and cloth covered tube
£130-180

144

A Thomas & Thomas “Horizon Bluewater” 3 piece carbon salt-water rod, 8’, #14/16, blue silk whippings, anodised screw grip reel fitting, fighting butt extension, little used condition, in bag and alloy tube
£160-240

145

A scarce Hardy 1911 model oak line winder, four drier arms, two folding and with hook and eye latches, one with ivorine winding handle, brass folding support with thumb locking screw and mounted on a rectangular chamfered base with “W” reel holder and sliding brass spring reel bracket, brass support stamped makers details, very good condition, circa 1915 (see illustration)
£200-300



146

A scarce Edward Vom Hofe brass line drier, the four extending arms with flared wire line holders and screw fitting onto a revolving spindle hub with “G” clamp table fitting, stamped makers details, very good condition, circa 1915
£130-180

147

A Hardy black japanned salmon fly box, cream painted interior fitted forty nickel silver spring clips and holding a selection of 36 fully dressed gut eyed salmon flies, lid with applied oval nickel silver trade plaque, circa 1920 and a Hardy Neroda bakelite trout fly box, oxblood finish, interior fitted chenille bars and holding a selection of trout dry flies, 1940s (2)
£150-250

148

A Hardy No.1 Crocodile Spinner bait mount, 5½" long, in original card box, two further No.3 and No.4 Crocodile Spinners, boxed, a boxed Hardy Natural leaded bait mount and two small boxed Hardy Ideal and Phantom baits (6)

£100-150

149

Two Hardy Jim Vincent pike spoons, 5¼" long, rear treble hook, incised scale decoration, three further Hardy spoon baits, five Hardy Pennel Devon minnow metal baits, five Hardy Heavyweight Devon baits and a Hardy Improved Halcyon Spinner bait (16)

£130-180

150

A very rare Hardy Transitional Brass Faced Perfect 3" wide drummed trout fly reel and block leather case, formerly the property of **A.H.E. Wood** with domed ivory handle mounted on milled brass cup, brass block foot, alloy frame with waisted pillars, strapped rim tension screw and early calliper spring check mechanism, open ball race with steel bearings, slightly dished brass drum with two bands of large and small perforations, twin rim cusps and later milled nickel silver locking screw, faceplate stamped Rod in hand trade mark, enclosed oval and straight line logos, block engraved "A.H.E.W. ~ 5" and (later) owners initials "D.A.G.", block leather case lid also stamped A.H.E.W. ~ 5 (painted over), new owner D.A. Gilmour and scratched in initials for E.G.W., the reel has a degree of wear from normal use as you would expect for a piece of this age and aside, from the interesting provenance, is a very rarely seen transitional variant dating from circa 1896-7 (see illustration)

£3000-4000

** This reel has a very interesting historical family provenance; originally owned by A.H.E. Wood it was passed onto his Eldest son E.G.W. (Major Edward Guy Wood MC), Edward Wood's daughter Phylliss married Col. Sir Allan MacDonald Gilmour in 1941, their first born son David Allan Gilmour (D.A.G) became the final family connection to the reel, he died in France in 2014.



151

A Hardy brass and ebonite 4½" salmon fly reel, domed cow horn handle, bridge foot, German silver rims, fixed check mechanism, faceplate with raised two screw spindle boss and stamped enclosed oval logo, light wear from normal use, circa 1895

£250-450

152

A rare Hardy Combined Fly/Spinning 5" salmon fly reel, lipped faceplate mounted twin domed ivory handles and with raised spindle boss and brass dome locking screw, pierced bridge brass foot and cage with quadruple drum pillars, rear mounted milled spindle tension nut with patent pivoting steel bearing, sliding optional check button, backplate stamped Rod in Hand trade mark, enclosed oval and straight line logos, light wear to lead finish from normal use only and a rarely seen example of the largest size available, circa 1897 (see illustration)

£600-900



153

A Hardy Nottingham 4" Silex action centre pin reel, walnut drum with tapered horn handles and recessed milled nickel silver tension nut and locking screw, brass Bickerdyke line guide, rim mounted nickel silver release lever, starback foot stamped makers details, small chip beside rim lever otherwise very good overall condition, circa 1912

£180-260

154

A Hardy Birmingham 4" brass salmon fly reel, horn handle, bridge foot, quadruple cage pillars, fixed check mechanism, faceplate with raised two screw spindle boss and stamped Rod in Hand trade mark and enclosed oval logo, only light wear to dark bronze patina, circa 1895

£200-300

155

A very rare Hardy Perfect 1st model 3¾" "Economy" alloy trout fly reel, domed ivorine handle and brass foot, triple cage pillars each pierced two ventilation holes, fixed calliper spring check mechanism (no rim adjuster) and no ball race, contracted drum with caged spindle and front plate with three bands of large and small perforations, faceplate stamped Rod in Hand trade mark, enclosed oval and straight line logos, reel has signs of wear from normal use only, a very rarely seen variant model, circa 1896/7 (see illustration)

£2500-4500



156

An Orvis CFO IV trout fly reel and two spare spools, composition handle, pierced alloy foot, two screw spring drum latch, nickel silver double line guide and rear tension regulator, light use only and a Guide Line "Le Cie" 4 piece carbon trout fly rod, 9'6", #5, anodised screw grip reel fitting, light use only, in bag and cloth covered tube (2)

£150-250

157

A Sage 3400D trout/light salmon fly reel and five spare spools, left hand wind model with counter-balanced rosewood handle, large arbour drum, black anodised frame and rear spindle mounted tension adjuster, light use only, in neoprene pouch and spare spools in Sportfish reel case

£200-300

158

A Sage 3000D trout/light salmon fly reel and three spare spools, left hand wind model with counter-balanced wooden handle, large arbour drum, black anodised frame and rear spindle mounted tension adjuster, light use only, in neoprene pouch and spare spools in Snowbee reel case

£140-240

159

A Danielsson Loop Evotec FW 5Eight trout fly reel and spare spool, right hand wind, black anodised model with counter-balanced handle, tri-form bearings, large arbour drum and rear spindle mounted tension adjuster, light use only

£140-240

160

A Danielsson Loop Evotec FW 4Seven trout fly reel and spare spool, right hand wind, black anodised model with counter-balanced handle, tri-form bearings, large arbour drum and rear spindle mounted tension adjuster, light use only

£140-240

161

A Sage "TCR 590-4" 4 piece carbon trout fly rod, 9', #5, crimson silk wraps, alloy screw grip reel fitting and rosewood seat, light use only, in bag and alloy tube

£140-180

162

A Sage "TCR 690-4" 4 piece carbon trout fly rod, 9', #6, crimson silk wraps, alloy screw grip reel fitting and rosewood seat, light use only, in bag and alloy tube
£140-180

163

A good Abel No.3 light salmon/salt-water fly reel, right hand wind, black anodised model with counter-balanced stained wooden handle one piece frame and rear spindle mounted milled tension adjuster, only very light use and in original cloth pouch (see illustration)
£200-300



164

A Thomas & Thomas "DH1611-3" 3 piece carbon salmon fly rod, 16', #11, blue silk wraps, anodised screw grip reel fitting, unused condition with plastic wrap still to handle, in bag and alloy tube and a Partridge 1112 HPD #11/12 salmon fly reel and spare spool, large arbour drum with counter-balanced handle, push button spool release and rear spindle mounted tension adjuster, light use only (2)
£150-250

165

A Thomas & Thomas "DH1510-3" 3 piece carbon salmon fly rod, 15', #10, blue silk wraps, anodised screw grip reel fitting, little used condition, in bag and alloy tube and a Partridge 1112 HPD #11/12 salmon fly reel and spare spool, large arbour drum with counter-balanced handle, push button spool release and rear spindle mounted tension adjuster, light use only (2)
£140-220

166

A good Allcock Aerial model 7950-T10 4½" centre pin reel, caged and six spoked drum with twin xylonite handles, ventilated front flange (eight holes) and twin regulator release/tension forks, B.P. line guide, brass foot, rear sliding optional check button and bar spring check mechanism, backplate stamped Stag logo and make and model details, wear from normal use, circa 1935 (see illustration)
£350-550



167

A scarce Terry Daniels 4½" centre pin reel, bearing mounted cage and six spoked drum with twin composition handles, ventilated flanges and twin release/regulator forks, wire B.P. line guide, brass foot and rear brass optional check lever and bar spring check mechanism, light use only
£150-200

168

A fine and rare Garry Mills "Millbrook" 3¾" centre pin reel, limited edition no 4/40 and based on the Improved Coxon Aerial the reel has a caged and six spoked drum with twin xylonite handles, double ventilated flanges and twin release/regulator forks, alloy lined seasoned mahogany backplate with brass starback foot and sliding optional check button with bar spring check mechanism, as new condition and one of the most sought after collector reels from the Mills Tackle Co., with Certificate and zip case (see illustration)
£600-900



169

A scarce Hardy 5" Scarboro sea centre pin reel, ventilated walnut drum with twin bulbous cow horn handles mounted on elliptical nickel silver plates, central brass wing locking nut, shaped brass stancheon foot with sliding optional check button (lacking screw cap), stamped enclosed oval logo, small repair to faceplate and a very rarely seen early Ocean model, circa 1895
£350-550

170

A very rare Hardy 1891 Brass Perfect 4½" salmon fly reel, domed bone handle, stancheon foot with two iron retaining screws and stamped "18044" and "216", nickel silver three quarter wire line guide with factory modified additional nickel silver roller pillar, fitted for the reel to be used on top of the rod, five line guide mounting lugs, strapped nickel silver milled tension screw and early calliper spring check mechanism, open ball race with phosphor bronze bearings, slightly dished drum with recessed spindle well, ventilated core and face with two bands of large and small perforations, faceplate stamped central 612 patent details and Rod in Hand trade mark, only light wear to patina from normal use and a rarely seen variant which was likely to have been modified to special order for a client to fish the reel on top of the rod, circa 1891/2 (see illustration)
£6000-9000



171

A good Hardy Perfect 4¼" salmon fly reel, domed ivory handle, brass foot, revolving nickel silver line guide, strapped rim tension screw with 1912-17 heavy duty check mechanism, drum with four rim cusps and milled nickel silver locking screw, faceplate stamped central circular logo, only light wear to lead finish from normal use, circa 1912

£450-650

172

A fine Hardy St George 3¾" trout fly reel, polished alloy drum with ebonite handle and three screw spring drum latch, ribbed brass foot, white metal line guide, milled nickel silver rim tension screw and Mk.II check mechanism, interior stamped "J.S." (Jimmy Smith), backplate stamped make and model details, reel is in excellent overall condition with only light signs of wear from normal use, circa 1940 (see illustration)

£350-550



173

A Hardy Uniqua 3/8" trout fly reel, domed ivory handles, brass foot, nickel silver horseshoe drum latch, fixed Mk.I check mechanism, backplate stamped rarely seen concentric circle make and model detail, light wear from normal use only, circa 1918
£160-240

174

A scarce Hardy L.R.H. Lightweight trout fly reel, polished alloy drum, black painted "wartime" frame, drum with ebonite handle and three screw drum latch, ribbed alloy foot, nickel silver "L" shaped line guide, milled rim tension screw and Mk. II check mechanism, interior stamped "J.S." (Jimmy Smith), backplate stamped make and model details, light wear from normal use only, circa 1940
£240-340

175

A very rare Hardy Special Perfect 3/4" trout fly reel fitted with a very rare agate and nickel silver mounted line guide, ivory handle on raised check housing, alloy foot, extremely rare white agate auxiliary line guide on nickel silver pillar fitting support, stamped makers name, rim mounted tension screw and Mk.I check mechanism, faceplate stamped central circular logo, light wear from normal use only, please note, the handle spindle thread is loose on the faceplate and will require re-fitting, circa 1920 (see illustration)
£1400-2400



176

A Cairnton style salmon fisher's priest, polished alloy finish, weighted head and flared knop, a matching trout fisher's priest and two further alloy Cairnton style salmon priests (4)
£90-130

177

An Allcock brass and alloy combined priest/marrow spoon, brass head, machine turned shaft and screw cap with marrow spoon attachment, an Abu Flymax brass headed priest with treen handle, two similar priests and a brass and alloy trout priest (4)
£100-150

178

A Loomis "Crosscurrent GLX" 4 piece bonefish/trout fly rod, 9', #8, crimson silk wraps, anodised screw grip reel fitting, in bag and cloth covered tube
£130-180

179

A Loomis "Native Run GLX" 4 piece carbon bonefish/trout fly rod, 9'6", #7, green silk wraps, anodised screw grip reel fitting, light use only, in bag and cloth covered tube
£130-180

180

A good Abel Super 9-10N saltwater/salmon fly reel, left hand wind model with blue anodised finish, counter-balanced handle, ventilated shallow cored drum, pierced foot and rear spindle mounted tension adjuster, only very light signs of use, in original cloth pouch (see illustration)
£200-300



181

A good Abel Super 11 saltwater/salmon fly reel, left hand wind model with counter-balanced handle, ventilated drum and cage, rear spindle mounted tension adjuster, light use only, in original cloth pouch

£200-300

182

A scarce Hardy Tunny/Big Game Alma trolling lead, torpedo shaped weight with nickel silver mounted running swivel and further head mounted swivel attachment, a scarce Hardy Sensitive Boom sea lead, the ball weight mounted on twisted wire boom with cork float, seven Hardy St Leonards sea leads, in four sizes, three Badminton adjustable leads and two adjustable leads, stamped make and registration details (14)

£120-160

183

A collection of various flies and lures including cuddy and terror flies, Allcock fly spoons on trade cards, various prawn baits and flies, spoon head tube and wake flies, various mackerel, salmon and sea-trout flies and others, some in trade cards (Q)

£130-180

184

Five Hearder Plano Convex Minnow spinner baits, each with twin spinning vane bodies mounted on central revolving spindle and with rear treble hook, four similar Launce spinners and a large collection of various mackerel spinners of similar design, some names (Q)

£130-180

185

A nickel silver 5" minnow bait, hollow fish shaped lure with twin spinning vanes stamped "8" and split body with two side and one rear wire mounted trebles and seven various other large spinner/spoon baits, various makes and styles (8)

£100-150

186

A rare Hardy Bethune salmon line drier, four brass flared and threaded arms mounted onto spring loaded spindle with horn handle on curved crank winding arm, ogee shaped brass support and tapered wooden handle with brass "W" reel fitting, support and crank handle stamped makers details, very good condition, circa 1900 (see illustration)

£200-300



187

A Hardy block leather trout reel case to fit a 3 3/8" Perfect reel, burgundy velvet lined interior, strap lock, lid block stamped previous owner initials and a Farlow block leather salmon reel case of similar design to take a 4" wide drummed reel, burgundy velvet lined interior, strap lock, lid with previous owners details, both in used but good condition, circa 1920 (2)

£120-160

188

A Hardy Practical line drier, rectangular chamfered oak base, twin folding alloy arms, one with ebonite winder mounted on screw locking upright, green baize lined base with Universal reel fitting and transfer labelled retailers' plate for Redmayne & Todd Ltd., circa 1930 (see illustration)

£150-200



189

A Hardy Perfect 4" salmon fly reel, ebonite handle, brass foot, revolving nickel silver line guide, milled rim tension screw and Mk.II check mechanism, nickel, silver drum locking screw, two fine hairline cracks to rim, 1920's

£180-260

190

A scarce Edward Vom Hofe Restigouche 2/0 direct drive light salmon fly reel and block leather case, ebonite and nickel silver construction with serpentine counter-balanced crank handle, set within and anti-foul rim, pierced foot stamped model detail and date code for 1928, triple cage pillars (two double roller), milled disc sliding optional check button to face and rear spindle mounted seven point graduated check adjuster, hinged spindle port cover stamped May '02 details, very good overall condition, circa 1928 (see illustration)

£1300-1800



191

A good Hardy "Salmon Deluxe" 3 piece cane single handed salmon rod, 9'6", #7, crimson/black tipped whippings, alloy screw grip reel fitting, extension butt handle, suction joints, 1960, light use only, in bag

£140-240

192

A good Hardy "Tourney" 2 piece cane trout fly rod, 9', crimson silk wraps, sliding alloy reel fitting, suction joint, 1958, little used condition, in later bag

£130-180

193

A Hardy "Perfection" 2 piece (2tips) cane trout fly rod, 9', #5, crimson silk inter-whipped, alloy screw grip reel fitting, 1965, light use only, in bag

£130-180

194

A scarce Edward Vom Hofe japanned fly reservoir, the rectangular case with five lift-out trays, each fitted bars on nickel silver spring clips and holding a selection of small salmon and trout flies, case with brass lock and swing handle, lid interior with applied retailers label, 11" x 7" x 4", 1940's

£300-400

195

A rare S. E. Bogdan Small Trout #3 fly reel, left hand wind model with black/champagne anodised finish, counter-balanced serpentine crank handle, pierced foot, multi-perforated drum and face plates, milled rear spindle cap and applied rectangular trade plaque, very good condition with only light signs of use (see illustration)

£700-1000



196

A Hardy Perfect 3" wide drummed trout fly reel, ebonite handle, ribbed brass foot, milled rim tension screw and Mk.II check mechanism, re-leaded at some time, circa 1930

£250-450

197

A rare Hardy St George 3¾" factory modified trout fly reel, shallow cored drum with ivorine handle and three screw drum latch, brass foot, white agate line guide (no cracks), milled rim tension screw with Mk.I check mechanism, factory modified with an additional short nickel silver winding arm (ivorine handle loose) to rear plate so that the reel can be retrieved with the left hand, possible for use by a disabled angler, light wear to finish from normal use, 1920's (see illustration)

£300-400



198

A Chas. Farlow & Co. Patent Lever 4" brass salmon fly reel, waisted horn handle, pierced block foot, quadruple cage pillars, rare milled tension screw, faceplate with raised two screw spindle boss and backplate script engraved makers details, circa 1900 and a Farlow brass 2¾" plate wind trout fly reel, horn handle, block foot, fixed check mechanism, circa 1900 (2)

£130-180

199

A Hardy Perfect 4½" salmon fly reel, ivorine handle, alloy foot, revolving nickel silver line guide, milled nickel silver rim tension screw and Mk.I check mechanism, drum with nickel silver locking screw, faceplate stamped central circular logo, small repair to rim beside line guide, circa 1920

£240-340

200

A fine Hardy Unique salmon fly reservoir, the mahogany rectangular cabinet with fall front door opening to reveal ten sliding drawers each with ivorine bun handle and twin index tabs, drawer interiors fitted bars of nickel spring metal clips with lower section for moth balls, holding a selection of 226 fully dress salmon flies, including a small number of gut eyed examples and some in original Hardy packets, door interior with applied oval trade plaque and outer case with recessed brass carry handle and inset name plate, 10" x 9¼" x 6¾" overall, circa 1910 (see illustration)

£2500-3500



201

A Hardy brass and ebonite 4¾" salmon fly reel, domed ivorine handle, bridge foot, quadruple cage pillars, twin German silver rims, fixed check mechanism, faceplate with raised two screw spindle boss and stamped enclosed oval logo, wear from normal use, circa 1896

£200-300

202

A Hardy Neroda bakelite trout/mayfly box, tortoiseshell finish, interior fitted chenille bars and holding a small selection of various trout flies and a Hardy japanned trout dry fly box, cream painted interior fitted fifteen lidded compartments and ivorine index tablet to lid interior, holding a selection of various trout flies (2)

£130-180

203

A rare Hardy Curate alloy combination tool, milled priest handle with screw cap oil receiver and spring tweezers with gut cutting blades, tweezer arms stamped make and model details, 1930's (see illustration)

£160-240



204

A continental silver reticulated fish table spice holder, incised scale decoration, hinged head (hinge a.f.) and relief fins, 11" long and a similar smaller continental silver snuff/spice holder 5½" long (2)

£90-130

205

A J. Bernard & Son leather salmon tackle hold-all, burgundy baize lined interior fitted compartmentalised base and lift-out tackle tray, outer case with brass lock, twin securing straps and wrap-around carry handle, applied hide plate to top stamped previous owners initials, case front stamped makers details, 19¾" x 3" x 9", 1920's (see illustration)

£300-400



206

A Thomas & Thomas "Horizon" 4 piece salt-water fly rod, 9', #11, blue silk wraps, anodised screw grip reel fitting, short extension butt handle, light use, in bag and alloy tube

£140-240

207

A Thomas & Thomas "Horizon" 4 piece salt-water fly rod, 9', #10, blue silk wraps, anodised screw grip reel fitting, short extension butt handle, in bag and alloy tube

£140-240

208

A Loop Model 4 salmon/salt-water fly reel, right hand wind model with black anodised finish, large arbour drum, counter-balanced handle, tri-form drum bearings and spindle mounted tension adjuster, numbered 823, light wear from normal use (see illustration)

£180-260



209

A Loop Model 4 salmon/salt-water fly reel, right hand wind model with black anodised finish, large arbour drum, counter-balanced handle, tri-form drum bearings and spindle mounted tension adjuster, numbered 797, wear from normal use

£150-200

210

An Alex martin Neroda style bakelite trout dry fly box, interior fitted fourteen cream painted fly compartments beneath five sliding celluloid lids and holding a good selection of mainly dry fly patterns, trade transfer to lid, and a modern Hardy Neroda trout/mayfly box, green finish, interior fitted ethafoam plates and holding a selection of trout flies (2)

£140-180

211

A good Hardy Neroda bakelite trout/sea-trout fly box, oxblood finish, interior fitted 119 spring metal clips and holding a good selection of trout wet flies and a similar tortoiseshell finish Neroda box, also holding a collection of wet patterns, 1940's (2)

£150-250

212

A scarce Hardy No.4 Pattern 3½" wide drummed slight salmon trade reel, "spitfire" alloy finish, ebonite handle, ribbed brass foot, nickel silver telephone drum latch, milled brass rim tension screw and Mk.II check mechanism, interior stamped "J.S." (Jimmy Smith), light wear from normal use, circa 1940 (see illustration)

£250-450



213

A good Hardy Hercules brass 3¼" trout fly reel, domed ivory handle on raised faceplate, bridge foot, triple cage pillars, fixed check mechanism, faceplate stamped Rod in Hand trade mark and open oval logo, only light wear to bronze patina from normal use, circa 1895

£200-300

214

A Hardy Nottingham 4" centre pin reel, walnut drum with twin horn handles, recessed spindle well and brass telephone locking latch, Bickerdyke line guide, brass starback foot with sliding optional check button and calliper spring check mechanism, foot stancheon stamped makers details, wear from normal use, circa 1905

£180-260

215

A fine and rare Hardy Brass Faced Perfect 5" salmon fly reel, domed ivory handle, pierced alloy foot, strapped rim tension screw with Turk's head locking nut and early calliper spring check mechanism, slightly dished drum with four rim cusps and milled nickel silver locking screw, faceplate stamped Rod in Hand trade mark, enclosed oval and straight line logos, neatly script engraved previous owners initials "W.J.B.", only very light wear to dark bronze patina and lead finish from normal use, circa 1903 (see illustration)

£1200-1800



216

A scarce early fruitwood hand-held trolling winch, the 5" diameter drum with seven waisted cage spindles and mounted on straight handle with iron locking pin, probably dating from late 18th-early 19th Century and possibly used for trolling for char

£180-260

217

A rare 19th Century brass multiplying clamp winch, turned bone handle on curved crank winding arm with domed iron locking screw, rim mounted drum locking lever, triple cage pillars, block foot with rivetted clamp fitting, pierced to take leather pad and with lyre tail locking screw, un-named but probably by Haywood of Birmingham, 2½” diam, x 2½” wide circa 1850 (see illustration)
£350-450



218

A scarce Geens 4½” Combination Spoon, the brass split tailed body with incised scale decoration and stamped Allcock Stag logo and model detail, rear gimp mounted treble hook, further head treble hook and box swivel, circa 1910
£160-240

219

A scarce Allcock Flying Water Witch brass 2½” bait, revolving spindle fitted five tapered brass ball body, each with twin spinning vanes, rear treble hook and an Allcock 2” Norwich spoon with amber/black spot glass eye, incised scale decoration, red painted interior and mounted head and tail trebles, circa 1920 (2)
£150-200

220

A very rare Gregory 3½” gilt metal Flexible Jointed bait, the fish shaped six section body with engraved scale decoration, twin head mounted spinning vanes, one stamped patent, amber/black spot glass eyes, shaped tail with rear ring mounted and wool decorated treble hook, circa 1880 (see illustration)
£2000-3000



221

A scarce Hardy Fortuna 6” big game centre pin reel, reverse tapered ebonite handles on bronze cross-bar winding arm and mounted above a six point capstan star drag adjuster, brass block foot, Andreas patent anti-reverse drum mechanism, fixed click check, backplate stamped make and model details, wear from normal use only, 1930's (see illustration)
£600-900



222

A set of twelve brass Hardy blazer buttons, each circular button stamped castle logo and with rear clip pin fitting in blue rexine and silk lined case, a similar set of nine Hardy blazer buttons, in case and a Hardy gilt metal medallion commemorating the opening of Hardy's Country store in July 1987, in case (3)
£120-160

223

A good Hardy St George Junior trout fly reel, ebonite handle, ribbed alloy foot, three screw drum latch, white agate line guide (two fine hairline cracks), nickel silver milled rim tension screw and Mk.II check mechanism, interior stamped "J.S." (Jimmy Smith), backplate stamped make and model details, only light wear to lead finish, 1930's (see illustration)
£300-500



224

A Hardy Wardle magnifier, black japanned finish, folding circular lens and bar brooch clip, stamped makers details and a Hardy alloy Driflydresser the racquet shaped gadget with two plates of felt and amadou (2)
£90-130

225

A rare Hardy Perfect Houghton Dry Fly 2½" wide drummed trout fly reel, ivorine handle brass foot, strapped rim tension screw with early calliper spring check mechanism, slightly dished solid drum (no perforations) with milled nickel silver locking screw, faceplate stamped central circular logo, good overall condition, circa 1904 (see illustration)
£700-1000



226

A French yew wood net gauge of tapered square pyramidal form, each side incised and black heightened with detail of legal size limitation for various species and stamped maker's medallion, knob handle, 4¼" long
£90-130

227

A fine Hardy Birmingham 3½" brass salmon fly reel, cow horn handle, bridge foot, quadruple cage pillars, fixed check mechanism, faceplate with raised two screw spindle boss and stamped Rod in Hand trade mark and enclosed oval logo, reel seems unused and retains all the original dark bronze finish, circa 1895
£200-300

228

An Ari't Hart HRH trout fly reel, polished alloy finish, handle on triform plated mounted beneath a milled tension wheel, anti-reverse drum, nickel silver foot on off-set stancheon, rear plate with three elliptical ports, foot stancheon stamped model detail and no. 082, in original zip leather case and card box (see illustration)
£200-300



229

A scarce Hardy 2" brass crank winch, tapered horn handle on waisted straight crank winding arm with domed iron locking screw, bridge foot, triple cage pillars, no check, faceplate stamped enclosed oval logo, only light wear to bronze patina, circa 1895

£250-450

230

A rare Hardy Perfect 3 3/8" double line guide trout fly reel, "Eunuch" model (no ball race), ebonite handle, brass foot, twin white agate line guides (no cracks), milled rim tension screw and Mk.I check mechanism, faceplate stamped central circular logo, wear to lead finish from normal use, 1920's (see illustration)

£400-600



231

A BFR Modula 95 wide drummed trout fly reel and eight spare spools, silver anodised finish, spring drum latch and rear tension adjuster, spare cartridge spools in two Snowbee neoprene cases and a Guide Line "Le Cie" 4 piece carbon trout fly rod, 9'6", #7, alloy screw grip reel fitting, light use only, in bag and cloth covered tube (2)

£130-180

232

A Loomis "Stream dance GLX" 4 piece carbon trout fly rod, 10', #6, green silk wraps, anodised alloy screw grip reel fitting, little used condition, in bag and cloth covered tube

£140-240

233

A Loomis "Native Run GLX" 4 piece carbon trout fly rod, 10', #7, green silk wraps, anodised alloy screw grip reel fitting, light use only, in bag and cloth covered alloy tube

£130-180

234

A Sage "SLT 586-4" 4 piece carbon trout fly rod, 8'6", #5, brown silk wraps, olivewood reel seat and alloy screw grip fitting, light use, in bag and alloy tube

£140-240

235

Seven C&F Design rectangular fly boxes holding an extensive collection of various flies including stillwater, dries, nymphs, wet trout and saltwater patterns and five further C&F Design boxes contained in a Chub green cloth hold-all (12)

£140-180

236

Eleven Wheatley alloy fly boxes holding a selection of trout dries, nymphs and mayflies contained in a rectangular aluminium tackle/reel case (11)

£100-150

237

A collection of miscellaneous tackle including Orvis, Flambeau and other plastic fly boxes holding a large collection of various trout, still water and salmon flies, a Hardy wooden handled salmon priest, a Fishpond tippet dispenser, a Compo 69 trout reel, A Sage tackle hold-all, various fly lines and heads, two Orvis and one Hardy fishing vests, two sage rod/reel trout tubes and various other items (Q)

£140-180

238

A good Thomas & Thomas “DH1309-3” 3 piece carbon salmon fly rod, 13’, #9, blue silk wraps, anodised screw grip reel fitting, little used condition, in bag and alloy tube
£160-240

239

A fine Thomas & Thomas “DH107-3” 3 piece carbon light salmon fly rod, 11’, #7, blue silk wraps, anodised screw grip reel fitting, new/unused condition with plastic wrap to handle, in bag and alloy tube
£180-260

240

A fine and rare Paul Witcher Bisterne Aerial 4” centre pin reel, caged and six spoked drum with twin xylonite handles, perforated front and rear flanges (twelve holes) and rear mounted drum release fork, brass stancheon foot, rear sliding optional check button and calliper spring check mechanism, “distressed” green anodised finish, backplate interior stamped ltd. ed. no. 11, as new condition, with original heavy hide case and sold with the Certificate of Authenticity sign by both Paul Witcher and Chris Yates (co-designer) and dated June 2003 (see illustration)
£800-1200



241

A fine Richard Carter Damsel fly 3½” centre pin reel, shallow cored solid alloy drum with twin xylonite handles and raised brass spindle boss, ribbed brass foot, backplate with domed brass spindle locking nut and sliding brass optional check button with Mk.I style bar spring check mechanism, as new condition, in original card box and sold with Certificate of Authenticity, dated March 2011
£350-550

242

A rare Dave Plowman Royal Aerial 4½” narrow drummed centre pin reel, black anodised finish, caged and six spoked drum with twin tapered composition handles and ventilated front flange (ten holes), brushed alloy stancheon foot, rear spindle mounted milled drum tension adjuster and off-set milled optional check button with bar spring check mechanism, backplate engraved model details and ltd. ed. no. 24, very light wear from normal use only, made 1986 (see illustration)
£700-1000



243

An Allcock Aerial C815 4½” centre pin reel, caged and six spoke drum with twin composition handles and ventilated front flange, chromed foot, rear optional check lever and bar spring check mechanism and a similar Aerial 4½” c815 reel, both with grey enamel finish and light use only, 1950’s (2)
£160-240

244

An Allcock Record Breaker 4½” centre pin reel, caged drum with twin composition handles and spring release latch, B.P. line guide, alloy foot rear optional check lever and bar spring check mechanism,, black finish and an Adcock Stanton 4½” centre pin reel, caged drum with milled rim and twin handles, stancheon foot, rear optional check button, both with light use only (2)

£130-180

245

A good R. Chapman “Dennis Pye 700” 2 piece cane pike rod, 10’, crimson silk wraps, detachable cork handle with sliding alloy reel fittings, suction joints, only very light signs of use, in bag

£130-180

246

A rare early B. James pre-production “S/U Mk. IV” 2 piece cane carp rod, 10’, green silk inter-whipped, trumpet cork handle with sliding alloy reel fittings, brass suction ferrule, with spigot male fitting, clear agate lined butt and tip rings, transfer Ealing label only (no model details as was typical on the later production models from circa 1955), a very rare example of a pre-production “Stepped Up” Mk.IV rod, made circa 1953/4, rod is in overall very good condition for its age and is in an un-named cloth bag which is contemporary to the rod, rare opportunity to acquire a unique piece of early carp fishing history

£800-1200

247

A rare Orvis 1874 Patent 2⅞” nickel silvered narrow drummed trout fly winch, turned ebonite handle on tapered straight crank winding arm, multi-perforated end plates and drum, bridge foot, triple cage pillars, fixed check mechanism, backplate stamped makers details, circa 1890 (see illustration)

£300-400



248

A Hardy Perfect 3½” light salmon fly reel, ebonite handle, ribbed brass foot, revolving nickel silver line guide, milled rim tension screw and Mk.II check mechanism, drum with milled nickel silver locking screw, polished finish, circa 1930

£250-450

249

A Hardy Birmingham brass 3½” brass light salmon fly reel, domed cow horn handle, bridge foot, quadruple cage pillars, fixed check mechanism, faceplate with raised two screw spindle boss and stamped Rod in Hand trade mark and enclosed oval logo, light wear from normal use, circa 1895

£160-260

250

A very rare Hardy Cascapedia 3/0 multiplying salmon fly reel, black anodised duralumin construction, 1.75:1 ratio gearing, reverse taped ebonite handle on serpentine crank winding arm set within an anti-foul rim, ribbed alloy foot, triple cage pillars, one with nickel silver roller, rear plate with milled nickel silver milled sliding optional check adjuster and spindle mounted knurled nickel silver seven point adjuster and hinged spindle cap stamped "Oil", faceplate inset three circular nickel silver medallions; two with royal coats of arms and one with model details "The Cascapedia 3/0, Made by Hardy Bros. Ltd., Alnwick, England", the reel has overall extensive fading to the black anodised finish along with other signs of wear from normal use, circa 1937 and in later leather "D" case (see illustration)

£4000-6000

** One of the rarest and most sought after collector reels in the Hardy fly range, the Cascapedia was produced between 1932-1939 with the Duralumin models made in the latter period between 1937-39, factory records show only 19 examples as having been produced during this later production period



251

A Hardy Brass Faced Perfect 4 1/4" salmon fly reel, domed ivory handle, brass foot, fixed nickel silver line guide, strapped rim tension screw with Turk's head locking nut and 1906 calliper spring check mechanism, drum with four rim cusps and milled nickel silver locking screw, faceplate stamped central circular logo and block engraved previous owners initials "R.M. 2", wear from normal use, circa 1908

£400-600

252

A rare Hardy Silex Multiplier 2 3/4" bait casting reel, ebonite handle on off-set circular winding plate, ribbed brass foot, rim mounted ivory casting bar trigger and milled nickel silver tension regulator with rear ivory quadrant weight indicator, drive plate stamped make and model details, light wear from normal use, circa 1930 (see illustration)

£500-800



253

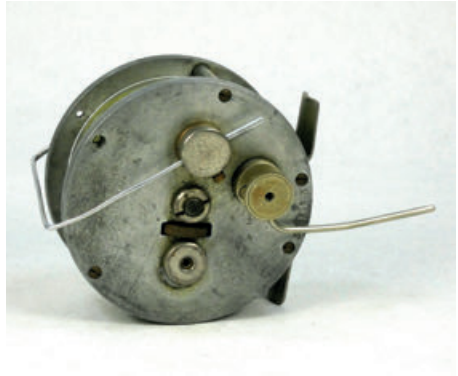
A Hardy Perfect 2 7/8" trout fly reel, ivory handle, alloy foot, white agate line guide (no cracks), milled rim tension screw and Mk.II check mechanism, faceplate stamped central circular logo and block engraved previous owners initials, wear from normal use and in un-named block leather case, circa 1920

£250-350

254

A Hardy brass 2¾” trout crank winch, domed horn handle on waisted straight crank winding arm with domed iron locking screw, bridge foot, triple cage pillars, fixed check mechanism, faceplate stamped Rod in hand trade mark and enclosed oval logo, wear from normal use, circa 1890

£200-300



255

An extremely rare Hardy Tournament Silex “L” series casting reel, the 3¼” alloy solid drummed reel with twin stud handles and additional turned ebonite extension handle for line retrieval, central knurled nickel silvered drum locking nut, pressed alloy foot stamped “H.4” and rear plate fitted four various cast and balance controls with adjustable wire reflex drum braking arm and additional manual brake lever with calibrated tension settings, the brake arm is secured by a milled locking disc and the reel is supplied with two inter-changeable brake arms, one straight the other set at 90° from the securing bracket, originally made with three tubular nickel silver drum pillar the centre pillar has been removed at some time, possibly to increase casting distance, the rear plate is stamped “Made by Hardy Bros. Ltd., Alnwick, England” and numbered “34333” beside the foot, included with the reel is the green baize lined teak case with an interior fitted to take the additional handle and two brake arms along with the reel, leather wrap-around strap a.f. and brass hinged lid black stenciled “H.4”, circa 1937 (see illustration)

£2000-3000

** It is very interesting to note that there are a number of differing features between this reel and the “L” series reel described and extensively illustrated in John Drewett: Hardy Brothers....’ pg. 516, notably the lack of a rim mounted tension regulator on this example, the pressed alloy foot (ribbed brass on production models) and the sectioned cage of this reel is unlike those illustrated by Drewett all of which show a one piece leaded alloy frame. It is therefore likely that this example was either an early prototype/production model or was produced to custom specifications for a tournament caster

256

A Hardy Altex No.1 Mk.IV fixed spool reel, left hand winding folding ebonite handle, full bail arm, ebonite spool, in rexine case and a Hardy Exalta fixed spool reel, folding ebonite handle, reversible foot, full bail arm, optional free spool lever, in fitted wooden case (2)

£130-180

257

A rare Hardy Winchester Fly Box, the japanned circular metal case with hinged cover and cream painted interior with lidded cast compartment and removable ebony cast and fly holder (small section of rim chipped) with four finger ports and routed lower section with felt band to hold gut cast (to keep gut damp), the fly cast can be removed via an open slot in the lower case section without having to open the case, outer cover with applied oval brass name plaque with 1884 patent details, used condition, circa 1890 (see illustration)

£200-300



258

A very rare early Hardy pigskin trout fly wallet, interior fitted pouch end pockets, tool holders, felt pad and parchment fly leaves containing a good selection of trout flies to gut casts, many with ink pattern details beside each pocket, end leaf ink stamped early Hardy oval trade logo with Fenkle Street, Alnwick address details and ink inscribed original owners details and date May 25th 1882, wrap-around strap, 5¼" x 3¾", good overall condition, circa 1882

£150-250

** Hardy Brothers relocated to the "London and North British Works" Fenkle Street premises in 1877, having outgrown their Paikes Street works, the company expanded the Fenkle Street workshop in 1886 and by 1890 had opened the much enlarged premises of the Bondgate factory, Hardy items bearing the early Fenkle Street trade mark are very rarely seen

259

A Hardy pigskin salmon fly wallet, interior fitted parchment leaves and felt dampers, holding a selection of fifty fully dressed salmon flies and with removable cast damping pouch, wrap-around strap, gilt stamped makers details and owners name, faux crocodile leather trout fly wallet, wrap-around strap, A Hardy grey pigskin trout fly wallet, a Hardy soft hide cast case and a Hardy Album cast case (5)

£120-160

260

A scarce leather cased salmon fly reservoir, the rectangular hide case with slide-off cover opening to reveal five polished alloy removeable fly boxes, each fitted cork fly bars and holding a selection of fully dressed salmon, streamer and trout flies, outer case with tooled decoration, wrap-around strap, carry handle and applied brass name plate engraved owners details and dated Feb. 1909, 8½" x 8" x 5" overall (see illustration)

£250-450



261

A Thomas & Thomas "Enthusiast" 2 piece carbon trout fly rod, 8'6", #6, black/white tipped silk wraps, wooden reel seat and screw grip alloy fitting, spigot joint, in bag and alloy tube and a Thomas & Thomas "Tailwater Special" 2 piece carbon trout rod, 9', #6, similar design, in bag and alloy tube (2)

£140-180

262

A Sage "Graphite III RPL" 2 piece carbon trout fly rod, 9'6", #7, brown silk wraps, anodised screw grip reel fitting, little used condition, in bag and alloy tube and a matching rod in used condition, in bag and alloy tube (2)

£130-180

263

A Thomas & Thomas "VE 905-6" 5 piece carbon trout fly rod, 9', #5, blue silk wraps, wooden reel seat and anodised screw grip reel fitting, light use only, in bag and alloy tube

£140-240

264

A Thomas & Thomas "45-249" 2 piece carbon bonefish fly rod, 9', #8, blue silk wraps, anodised screw grip reel fitting, in bag and another T&T "G-9604" 2 piece bonefish fly rod, 9', #8, lacking tip ring, in bag (2)

£130-180

265

A Hardy Cascapedia 8/9 light salmon fly reel, right hand wind model with black anodised end plates, serpentine counter-balanced crank handle, alloy foot, faceplate inset three medallions, rear milled spindle mounted tension adjuster with twenty one point indicator and sliding optional check button, new/unused condition, in zip leather case and card box (see illustration)

£250-300



266

A Hardy Sovereign 2000 #7 trout fly reel, ltd. ed. no. 30, black finish, counter-balanced handle, spring drum latch, rear spindle mounted tension adjuster, as new condition in cloth bag and card box and a Hardy Sovereign 2000 #7 spare frame, in card box

£140-180

267

Two J. Bernard & Son japanned waistcoat trout fly boxes, each with celluloid lids, cream painted interior, one with two compartments, applied brass trade plaques, a Bernard japanned trout dry fly, interior fitted twelve lidded fly compartments and holding a selection of flies and Bernard J: Fly Dressing, 1923, 1st ed., col. plts of flies (4)

£90-130

268

A Hardy Cast damper & Carrier, green rexine case cast leaves and felt damper, stud fasteners, four Wheatley alloy salmon and trout fly boxes holding a selection of salmon flies, a Wheatley alloy minnow box, a collection of handmade wooden Devon Minnows made by the late Avon Royalty keeper Alan Godfrey and a green painted metal fly tying cabinet fitted interior holding various materials including a good Jungle Cock cape (Q)

£140-240

269

A Julius Vom Hofe 4½" direct drive salmon fly reel, ebonite and nickel silver construction with counter-balanced handle on cross-bar winding arm set within an anti-foul rim, bridge foot stamped "4½" quadruple cage pillars, rear milled optional check button and spindle cap, back plate stamped makers details, circa 1920

£200-300

270

A rare C. Farlow & Co oak salmon fly reservoir, interior fitted six lift-out trays, each with paper lined base and cork fly bars, holding a selection of 320 fully dressed salmon flies, including 46 gut eyed examples and some doubles, lid interior with inset rectangular ivory trade plaque, outer case with recessed brass carrying handle, lacking brass lock escutcheon and a few small holes to front panel (easily filled), 10" x 7¼" x 6¾", circa 1890 (see illustration)

£700-1000



271

A Hardy “Wye” 3 piece (2 tips) cane salmon fly rod, 13’6”, crimson inter-whipped, sliding alloy screw grip reel fitting, lockfast joints, 1962, in bag

£130-180

272

A Hardy “Salmon Deluxe” 3 piece (2 tips) single handed salmon fly rod, 9’, #7, crimson/black tipped silk wraps, alloy screw grip reel fitting, detachable butt extension, suction joints, 1961, in bag

£140-180

273

A scarce Hardy “Jubilee” 3 piece (2 tips) cane trout fly rod, 9’6”, tan silk whippings, alloy screw grip reel fitting, suction joints, 1940, in bag

£150-250

274

A Hardy “C.C. de France” 2 piece cane trout fly rod, 9’, tan silk inter-whippings, sliding alloy reel fitting, suction joint, 1929, good condition, in bag

£160-240

275

A rare Hardy Featherweight trout fly reel, reproduction model in previously unseen silver anodised finish, ivory handle, polished alloy foot, three screw spring drum latch, nickel silver “U” shaped line guide, milled rim tension screw and dual compensating check mechanism, unused condition and likely to have been made as a pre-production trial finish reel (see illustration)

£200-300



276

A rare Hardy JLH Salmon fly reel limited edition fly reel no. 000, grey anodised finish, composition handle, alloy foot, two screw drum latch, rear spindle mounted tension adjuster, as new condition and in zip case and car box, box signed by James Hardy

£250-350

** Usually all zero numbered limited edition reels are retained by Hardy’s however, we understand this model was gifted by Jim Hardy to a previous owner of the reel

277

A very rare un-numbered JLH #7 James L. Hardy 1927-2012 commemorative limited edition trout fly reel, rose gold anodised finish, rosewood handle, two screw drum latch, nickel silver “U” shaped line guide, rear milled spindle mounted tension adjuster, as new condition, a limited run of only 85 (numbered) reels were produced of this commemorative model, this example is likely to have been a pre-production reel (see illustration)

£350-550



278

A scarce Hardy Perfect 3½” “spitfire” alloy trout fly reel, left hand wind reproduction model with counter-balanced ebonite handle, ribbed alloy foot, white agate line guide (no cracks), milled rim tension screw and Mk.II check mechanism, milled nickel silver drum locking screw and faceplate stamped make and model details, as new condition

£250-350

279

A scarce Hardy brass oil bottle of shouldered cylindrical form, milled screw cap fitted with oil spike, cap stamped makers details, 2" high and a Hardy brass disgorger with "V" hook release and knopped terminal, stamped makers name, 8" long (2)

£130-180

280

A very rare Hardy H.J.S. Tournament XLM multiplier reel, constructed of Duralumin alloy and with special order off-set tiny twin reverse tapered ebonite handles on "S" scroll cross bar, 3:1 ratio gearing, single rim mounted brass drum release lever, two knurled brass spindle end caps both with oil ports, ribbed alloy foot and rear plate stamped makers details, sold with spare (larger) twin reverse tapered ebonite handled winding arm and contained within a fitted teak case, lid damaged on one edge and leather strap a.f., good overall condition, 1930's (see illustration)

£1500-2500



281

A Victorian leather travelling salmon reel case holding five Farlow brass salmon reels, rectangular case with twin locking straps, swing handle and brass hasp lock, lid black stamped previous owners' initials, green baize lined interior fitted four compartments and holding five Farlow brass plate wind salmon reels 4½" – 3¾" in size, each with domed ivory handle, bridge foot stamped fish logo, fixed check mechanism, engraved previous owners' initials, wear to finish from normal use to reels, case measures 19¼" x 5½" x 5½" overall, circa 1890

£400-600

282

A rare Hardy Field 2⅞" trout fly reel, lipped faceplate with ivory handle and raised spindle boss with domed iron locking screw, brass bridge foot, drum and triple cage pillars, backplate stamped enclosed oval logo and straight line logos, light wear from normal use only, circa 1897 (see illustration)

£450-650



283

A Hardy Eureka 3½" centre pin reel, shallow cored drum with twin ebonite handles, nickel silver telephone drum latch and multi-perforated front plate, ribbed brass foot, rim mounted nickel silver optional check lever and bar spring check mechanism, light wear to finish from normal use, 1930's

£160-240

284

A rare Hardy Landrow leather tackle hold-all, the red baize lined interior fitted sixteen various reel and tackle compartments, lid interior with applied oval red and gilt stamped leather trade plaque, outer case with twin hasp locks, swing carry handle to front and further carry handle to lid, front panel stamped model detail, rear lid corners strengthened at some time otherwise in very good overall condition, 23" x 15" x 4½" overall, circa 1900 (see illustration)

£700-1000



285

A 19th Century mahogany rectangular fly dresser's cabinet, the interior fitted two lift-out trays and base with numerous mahogany veneer lidded material and tool compartments, further pin-locking "hidden" drawer to one side of the cabinet also fitted lift-out tray and base section with lidded compartments, holding a small selection of various fly dressing materials including feathers and dubbings, some compartments lids split, outer cabinet with twin swing brass carry handles and ebony lock escutcheon, 12" x 9½" x 5½" overall, circa 1850

£300-400

286

A rare Hardy H.J.S. bait casting outfit, comprising; a right hand wind HJS bait casting reel with black anodised finish, 4:1 ratio gearing, reverse tapered ebonite handle on off-set curved crank winding arm mounted above a four point capstan drag adjuster, rim mounted spool release lever and milled tension screw, ribbed alloy foot, rear jewelled spindle tension nut and oil port, a brass clamp fitting four arm wire line winder, nickel silvered oil bottle and cloth reel bag all contained within a square fitted teak case with leather wrap-around strap and the matching Hardy "H.J.S" cane bait casting rod, 5'6", detachable crank wind handle with screw grip alloy reel fitting, two tip sections one "Heavy" and one "Light", agate lined rings, no date stamped but reel fitting stamped "24", in rosewood capped alloy tube and bag, overall excellent condition, circa 1940 (see illustration)

£500-800



287

A 19th Century demi-lune steamed wooden trout fisher's creel, ebonized finish, cream painted interior, hinged cover, painted previous owners' initials, twin brass strap eyes, leather and canvas shoulder strap, 11½" wide, circa 1880

£140-240

288

An early 19th Century fruitwood pinn, domed cow horn handle on short iron crank winding arm, single turned wooden drum pillar, shaped rectangular bar foot fitted rivetted large curved iron reel seat, circa 1820 (see illustration)

£500-700



289

A Shaw's Fly-Fishing knife, fitted six steel tools, nickel silver side plates stamped inch measure and hook gauge, hinged shackle, circa 1940

£100-150

290

A highly important Thomas Aldred exhibition fly display, the silk back panel with stitched in display of 56 fully dressed gut eyed salmon flies and numerous trout flies sewn in to spell "Thos. Aldred, 258 Oxford St.", mounted within a scrolling gold braid border, set within a gilt slipped ebonised wooden frame, glazed, 25½" x 30½" overall, Thos. Aldred began trading from the 128 Oxford St. address in 1851 and it is very likely this display would have made for inclusion in the Great Exhibition of the same year, there is some fading to both flies and silk backing as you would expect for a piece of such age, circa 1851 (see illustration)

£5000-8000



291

A good Hardy Perfect 4" salmon fly reel, domed ivorine handle, brass foot, strapped rim tension screw with Turk's head locking nut and 1912-17 heavy duty check mechanism, drum with four rim cusps and (later) nickel silver locking screw, faceplate stamped circular logo, light wear from normal use only, circa 1915

£300-400

292

A fine rare Hardy Bouglé 3" trout fly reel, ivorine handle, brass foot, triple raised pillars (one nickel silver roller), brass strapped rim tension screw and 1912-17 heavy duty check mechanism, slightly dished drum with ventilated front plate and milled nickel silver locking screw, faceplate stamped central circular logo and neatly block engraved previous owners initials, only very light wear to dark lead finish, circa 1915 (see illustration)

£1500-2000



293

A Hardy Birmingham brass 2½" trout fly reel, horn handle, block foot, triple cage pillars, fixed check mechanism, faceplate with raised two screw spindle boss and stamped enclosed oval logo, backplate stamped Rod in Hand trade mark, wear from normal use, circa 1896

£140-240

294

A good Hardy Perfect 3½" trout fly reel, ivorine handle, brass foot, strapped rim tension screw and early calliper spring check mechanism, contracted drum with four rim cusps and milled nickel silver locking screw, faceplate stamped open oval and straight line logos, light wear to finish from normal use only, circa 1900

£300-500

295

A fine and rare Hardy St George Salmon 4¼" fly reel, shallow cored drum with twin ivorine handles and three screw spring release latch, silent wind-in action, brass foot, revolving nickel silver line guide, milled nickel silver rim tension screw and Mk.II check mechanism, back plate stamped make and model details, reel retains most of the original dark lead finish and is in overall excellent condition, circa 1924 (see illustration)

£1800-2600



296

A Hardy brass and ebonite 2½" trout fly reel, ivorine handle, bridge foot, German silver rims, triple cage pillars, fixed check mechanism, faceplate with raised two screw spindle boss and stamped Rod in Hand trade mark and enclosed oval logo, engraved previous owners initials, binding slightly other wear from normal use only, circa 1896

£180-260

297

A very rare Hardy Transitional Perfect Houghton Dry Fly 2½" wide drummed trout fly reel, ivorine handle on alloy faceplate, pierced brass block foot, brass cage with three pillars, fixed check mechanism (no rim adjuster) withy elliptical calliper spring mechanism, no ball race, solid alloy drum (no perforations) with milled brass locking nut, faceplate stamped Rod in Hand trade mark and enclosed oval logo, two very faint small hairline cracks to faceplate above the logo stamps (possibly caused by striking the details onto reel) otherwise wear from normal use only, a previously unseen model, possibly made as a prototype Houghton reel or as an "Economy" version made to special order, circa 1897 (see illustration)

£3000-5000



298

A good Hardy Hercules brass 4¼" salmon fly reel, domed ivorine handle on raised winding plate, pierced and waisted bridge foot, quadruple cage pillars, fixed check mechanism, faceplate with raised two screw spindle boss and stamped Rod in Hand trade mark and enclosed oval logo, only light wear to bronze patina, circa 1895

£200-300

299

A scarce Hardy Perfect 3½" trout fly reel, ivorine handle, brass foot, red agate line guide (hairline cracks), brass strapped rim tension screw and 1906 calliper spring check mechanism, contracted drum with four rim cusps and milled nickel silver locking screw, faceplate stamped central circular logo, wear from normal use only, circa 1908

£300-500

300

An exceptionally fine and rare special order Hardy The Field 5½” tarpon reel and block leather case, constructed of heavy nickel silvered Hercules metal and with domed ivorine handle mounted on short crank winding arm which can be set into two positions for fighting a fish and line retrieval, bridge foot stamped “1”, quadruple cage pillars with one additional heavier pillar fitted to take a detachable rim braking lever with spring lock and leather braking pad, rear of the reel fitted with a grooved sliding optional check button and stamped open oval trade logo, faceplate with raised two screw spindle boss and stamped “The Field” and “Hardy’s Pat”, reel is in exceptional overall condition and is one of the finest and rarest Hardy special order models ever to have been offered for sale by Angling Auctions (see illustration)
£8000-12000

** This reel is one of a pair commissioned by William Henry Grenfell, Lord Desborough of Taplow (1855-1945), a politician, renowned cricketer, athlete and keen all-round field sportsman, he was credited with catching more than one hundred tarpon off the Florida coast in less than one month. He was appointed C.V.O. in 1907 and advanced to K.V.C.O. in 1908 and G.C.V.O. in 1925. In 1928 he was admitted as a knight of the Order of the Garter



Cased fish, Trophies & Art

301

A 30lbs Pike preserved by Alfred Crystall, Hammersmith mounted in a naturalistic aquatic setting within a gilt lined flat fronted show case, blue painted backboard with mounted Jardine snap tackle and applied triangular printed legend plaque “This Pike, Weighing 30¼ pounds was taken by Julien R. Church at Clumber Nottinghamshire, 22nd January 1878”, paper trade label to top right corner, front glazed panel cracked to bottom left corner
£300-500

302

A Loch Leven Brown Trout, set amongst aquatic vegetation within a gilt lined and bow fronted case with gilt legend “Loch Leven 14th Aug. 1912”, blue backboard, probably Cooper, 22” wide
£250-450

303

A Grayling, mounted in naturalistic riverbed setting within a painted wooden showcase with rockwork background, 20½” wide
£200-400

304

A Roach/Bream hybrid by S.F. Sanders, mounted in naturalistic setting of reeds within a picture showcase, blue painted backboard with applied legend plaque “Roach x Bream, Weight 2¼lbs, Caught by Bert Corns at Upton-on Severn, 4th Sept. 1949”, 21” wide
£200-300

305

David Miller: Pike attacking a shoal of Roach, oil on panel, signed and dated '06, gilt framed, image size 23” x 35½” (see illustration)
£500-800

** David Miller is undoubtedly one of the finest living fish and wildlife artists working in the UK, he is well known for his highly detailed, life like studies of a variety of fish species



306

Green D.: Still life study of a mixed bag in rocky riverbank setting before a creel and bait kettle, oil on board, gilt framed, image 17½" x 23½"

£250-450

307

An historically important Fochaber's oil on canvas study of a river Avon cock Salmon caught by John Ashley Cooper, the naturalistically painted fish, with white painted legend "Ellingham Bridge, River Avon, April 14th 1936, 33lbs", the painting is almost certainly the hand of Dhuie Tully, wife of fish carver John Tully and daughter of the renowned fish artist John B. Russell and the capture of the fish is recorded in the chapter on the Hampshire river Avon in Ashley Cooper's 1982 book; A Salmon Fisher's Odyssey, mounted in gilt slipped burr walnut frame and sold with a letter of provenance from Jess Miller to the present owner stating the painting was purchased from the estate of Ashley Cooper after his death, dated Dec. 1991, 52" x 20" overall (see illustration)

£3000-4000

** Oil painting studies from the Fochaber's studio are very rarely seen, a more common alternative to a carved model was a watercolour and gouache heightened artwork usually executed on grey cartridge paper. John Ashley Cooper (d.1986) was a renowned author and highly successful salmon fisher



308

A carved wooden Salmon, the half block fish naturalistically painted and mounted on rectangular teak backboard with applied brass legend plaque "39½lbs. Salmon, Gaula River, Norway, Barrie Welham 1988", verso colour photograph of angler and fish, 44" wide

£250-450

309

A plaster cast model of a Loch Leven Trout, the three quarter block model naturalistically painted and mounted on green painted rectangular backboard, verso pencil inscribed "Lock Leven, 1930 1lb 14ozs.", 18" wide

£600-800

310

A fine and rare River Test Sea-Trout mounted by J. Cooper & Sons mounted in naturalistic rocky riverbed setting with a gilt lined flat fronted case, blue painted backboard with applied rectangular ivorine legend plaque "Sea Trout, 8lbs., Length 25½", Girth 15", Caught on Fly by G. Scott Atkinson Esq., Testwood, River Test, 31st July 1937", Radnor St. trade label to top left corner, 30½" wide (see illustration)

£1500-2000



311

A Chub set amongst aquatic vegetation within a Cooper style gilt lined and bow fronted case, blue painted backboard with applied paper legend plaque "Chub, Caught by F. Wright at Torksey, Dec. 6th 1908, Weight 3lbs 8½ozs.", 25" wide

£250-450

312

An A.W. Gamage Ltd. mounted **Salmo Ferox (Ferox Trout)** set amongst aquatic vegetation within a gilt line bow fronted case, gilt inscribed "Salmo Ferox, Caught in Loch Ness, 14th Aug. 1914 by W. Fletcher Stiell, Wht. 4½ lbs.", blue painted backboard with applied metal trade label to top left corner, 28" wide

£300-500

313

A pair of **Brown Trout mounted by J. Cooper & Sons**, in naturalistic aquatic setting within a gilt lined and bow fronted case, blue painted backboard with applied Radnor T. trade label to top left corner, 37¼" wide (see illustration)

£400-600



314

Mr. Briggs & His Doings: eight humorous colour prints, pub. Bradbury & Evans, in card mounts (8)

£120-160

315

An extremely important pair of **P.D. Malloch carved wooden Tay salmon**, the three quarter block fish carved as a matching pair i.e. one facing to dexter and one to sinister, each naturalistically painted and mounted onto graduated grey/green backboards with white painted legends "Caught by Grace Radclyffe, on Lower Scone Beat, River Tay, 12th September, 1924, Weight 42lbs." and "Caught by Grace Radclyffe, on Lower Scone Beat, River Tay, 12th September, 1924, Weight 41lbs.", both backboards with red painted makers name to top left hand corner and with oak frame surrounds, 55" and 54½" wide, both fish are in fine overall condition, there is some hairline cracking to backboards which is common on examples of this age and are sold with a framed Malloch of Perth black and white photograph of Grace Radclyffe with this remarkable catch of two fish in excess of forty pounds taken on the same day (see illustration)

£15000-20000



316

Joseph Farquharson (1846-1935): Dry point etching of a gentleman angler and ghillie landing a salmon in rocky river landscape, pencil signed to border, Print Sellers Assoc. stamp with date code "DHX", in gilt lined mount and oak frame, image 24" x 34"

£150-250

317

An early Fochaber's carved wooden cock Salmon, the painted half block model with flat painted pectoral fin and relief carved other fins and tail, some with damage and ventral fin missing, some later over-painting, verso applied paper Rowland Ward, The Jungle, 166 Piccadilly label, early example circa 1890-1900, 40" long (see illustration)
£1500-2500



318

John Searl: Barbel, ltd. ed. colour print 93/100 pencil drawing of a barbel to bottom left corner and signed by the artist and with personal inscription from Bob James (captor), framed and glazed, image 17" x 22½"
£130-230

319

John Searl: Autumn Perch, ltd. ed. colour print 85/100, pencil drawing to bottom left corner, signed by the author and Peter Wheat (captor), framed and glazed, image 17" x 22½"
£130-230

320

John Searl: The Avon Roach, ltd. ed. colour print 92/100, pencil signed in margin, framed and glazed, image 16½" x 22½"
£100-200

320a

John Searl: Under the Bridge, ltd. ed. colour print 3/50, pencil signed, framed and glazed, image 12½" x 14" and John Searl: The Keeper's Catch, ltd. ed. sepia print 3/5 depicting Royalty Fishery keeper John Dennis with his 17lb cock salmon, image 12¼" x 11½"
£100-150

321

David Miller: Carp amongst lilies, colour print, pencil signed, framed and glazed, image 14" x 22½" and David Miller: monochrome print of four salmon in rocky riverbed setting, framed and glazed (2)
£90-130

322

D. Green: Study of Pike attacking Roach shoal, oil on canvas, signed and dated 2008, framed, 23¼" x 35¼" (see illustration)
£250-450



323

D. Green: Study of two Carp feeding, oil on canvas, signed and dated '90, gilt framed, 23¾" x 29¾"
£250-450

324

A Blagdon Brown Trout mounted by J. Cooper & Sons, set amongst aquatic vegetation within a heavy oak framed flat fronted table-top display case, gilt inscribed "Caught at Blagdon, Sept. 16th, 1925 by Colonel Openshaw C.B., Wgt. 6lbs 8ozs.", blue painted backboard mounted with fly of capture and paper Radnor St. trade label applied to lid interior, 42½" wide (see illustration)
£400-600



324a

A mounted Common Bream set in riverbed scenery within a gilt lined flat front case, 30" wide
£130-180

Books & Catalogue

325

Scrope Wm.: Days and Nights of Salmon Fishing in the Tweed, 1843 1st ed., eng. col. frontis, 13 full page tinted litho plts., text engs., hf. red. morr. bdg., ribbed spine with gilt emblems

£300-400

326

Calderwood W.L.: The Salmon Rivers and Lochs of Scotland, 1909 deluxe ltd. ed. 202/250, Edward Arnold London, 4 tipped in col. plts., b/w photo and illust., blue/white buckram bdg.

£200-300

327

Frodin M.: Classic Salmon Flies, History & Patterns, 1991 ltd. ed. 2/350, signed copy with mounted actual Em Silver salmon fly to title page, col. photos of flies, burgundy morr. bdg. with gilt title and fly emblem, gilt edged, in slip case

£200-300

328

Falkus H.: Spey-Casting, 1994 ltd. ed. 37/80, signed by the author, b/w photo illust. and line drawings, blue morr. bdg., gilt top, ribbed spine, in slip case

£150-250

329

Downs Donald-Baird: Weavings Around the Creel, 1991 deluxe ltd. ed. 18/25, signed by the author, b/w text illust., full tan morr. bdg. ribbed spine, beige tan clo. slip case

£140-240

330

Babcock Louis L.: The Tarpon, 3rd ed., 1930, ltd. ed. 196/250, ink inscribed presentation copy from the author to C.M. French, June 3rd 1945, b/w text illust., photo plt. of leaping tarpon applied to cover, spine strengthened and some text sections ink underlined, orig. green paper covers with typed letter from Judge Clyde Kissinger to Edmund McLaurin concerning the highlighted text, dated Aug. 1960

£200-300

331

Robert J.: Fly Fishing for Grayling, 1999 1st ltd. ed. 11/30, signed by the author, b/w photo frontis and col. photos n text, full red morr. bdg, gilt edge, ribbed spine, in slip case

£120-160

332

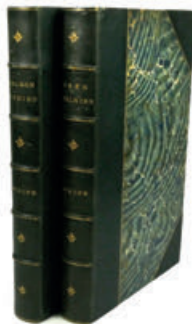
Falkus H. & Greenhalgh M.: The Salmon & Sea Trout Fisher's Handbook, 1997 ltd. ed. 17/75 signed by M. Greenhalgh, col. photo frontis of flies, b/w photo and text illust., full green morr. bdg., gilt edges, in slip case

£140-240

333

Scrope Wm.: Days and Nights of Salmon Fishing and The Art of Deer Stalking, 2 vols, 1843 1st ed. and 1839 1st ed., Salmon vol. with eng. col. frontis, 13 full page tinted litho plts., text engs., Stalking vol. with eng. frontis and further eng. and litho plts. after Edwin and Charles Landseer, hf. green morr. bdgs., gilt tops, ribbed spines (2) (see illustration)

£500-800



334

Flury R. & Dalenson T.: Alten, The Story of a Salmon River, 1991, ltd. ed. 49/150, b/w photo and text illust., hf. green morr. bdg., marbled boards, in slip case with gilt emblem dec.

£350-450

335

Taylor H.J.: Tasmanian Angling Memories, 1995 ltd. ed. 15/80, b/w photo illust., red clo. bdg., Burton Gen. E.F.: Trouting in Norway, 1897, b/w photo plts. and a collection of various other angling vols. and periodicals (Q)
£100-150

335a

Hills J.W.: Mt Sporting Life, 1936 1st ed., dedication from author to George La Branche, re-bound blue hf. morr. bdg., Walton & Cotton: Compleat Angler, 1911 Thorpe ed., 25 col. plts. by Thorpe, gilt dec. green clo. bdg.; Skues G.E.M.: The Way of a Trout with a Fly, 1928 2nd ed. and various other angling vols. (Q)

£120-160

336

How To Catch Them: five scarce volumes: Stone P.: Specimen Fish, 1969 1st ed., d.w.; Stone Donald S.: Barbel, 1955 1st ed., d.w.; Marlborough D.: Fishing in Ponds, 1966 1st ed., d.w.; Hall W.: Cod, 1969 1st ed., d.w. and Johnson A.E.B.: Gravel-Pit Coarse Fishing, 1964, d.w. (5) (see illustration)

£150-250



337

How To Catch Them Series, 39 various titles, all 1st editions and with pict. d.w.'s, various dates, including Grey Mullet, Pollack & Coalfish, Small Fry et al (39)

£150-250

338

Davis E.W.: Salmon-Fishing on the Grand Cascapedia, 2001 FFCL ltd. ed., in slip case, another 1994 FFCL standard copy; Ashton J.B. & Latimer A.: A Celebration of Salmon Rivers, 2007, d.w.; Francis Francis: A Book on Angling, 1872 3rd ed., re-bound and a quantity of various other angling related vols. mainly salmon and destination fishing (Q)

£100-150

339

Edward Vom Hofe tackle catalogue, 1950, soft covers, b/w/ text illust; Abbey & Imbrie tackle catalogue, 1930, factory records copy with rexine cover and bound in lined facing pages to text and six various books relating to tackle collecting (8)

£100-150

340

Baigent Dr. W.A.: A Book on Hackles for Fly Dressing, c.1944 n.d., privately pub. approx. 40 copies only, port. frontis, 4 b/w photo plts., blue full cf. bdg., 164 actual specimen cock hackles displayed in 11 cream card mounts, contained in full blue cf. folding case (see illustration)

£1500-2000



The following 41 lots are from the library of the late Dr. Roy Flury (1928-2020), regarded by many as the UK's foremost authority on the history of salmon fishing in Norway, in particular the British influence on the development of salmon fly fishing. A regular rod on Norway's famous big fish river, the Alta (Alten) he is perhaps best known for the three books he published on the history of this river; *Alten: The Story of a Salmon River* (1991); *Alten – Reflections* (1993) and *Alten: Red Letter Days: The Salmon Fishing Diaries of Col. Sir North Dalrymple-Hamilton*.

341

Tolfrey F.: Jones's Guide to Norway and Salmon Fisher's Pocket Companion, 1848 1st ed., eng. frontis, 8 hand col. pls. of salmon flies, hf. brown cf. bdg. gilt top, ribbed spine with gilt fish emblems, clean copy in later suede lined brown leather folding case (see illustration)

£1500-2000



342

Anon: Frost and Fire, 1865 1st ed., 2 vols., Edin., b/w text illust., folding map of Temperature, Winds, Ocean Currents and Denudation (Northern Hemisphere) tipped into rear of vol. I, original blue clo. bdg., gilt dec. bound by Burn, Kirby St., bookplate for San Francisco College for Women. The two vols chart the expedition of J.A. Tomlin and J.F. Campbell to Alten in 1849 (one year after Tolfrey's Guide to Norway was published), with insert hand written note from Roy Flury (2)

£300-400

343

Metcalfe Rev. F.: The Oxonian in Norway or Notes of Excursions in that Country in 1854-1855, 1856 1st ed., 2 vols, eng. frontis, modern hf. green morr. bdg. ribbed spine

£150-250

344

Belton Rev.: Two Summers in Norway, 1840 1st ed., 2 vols., modern green hf. cf. bdg., ribbed spine

£130-180

345

Pottinger Sir H.: Flood, Fell & Forest, 1905 1st ed., 2 vols., frontis, b/w photo pls., orig. blue clo. bdg., gilt title, interesting section on fishing in Norway, Pottinger is best known for his introducing the British salmon fisherman to the Stjordal river, Trondheim (2)

£120-160

346

Tomlin J.: Notes from a Traveller's Journal During an Excursion in Norway and Sweden, 1852, 1st ed., pub. Woodfall & Son for private distribution, orig. full blue morr. bdg. later marbled end papers, embossed spine, in later folding cloth case

£400-600

347

Lees J.A. & Clutterbuck W.J.: Three in Norway by Two of Them, 1882 1st ed., eng. frontis, b/w pls. and text illust., green hf. cf. bdg., ribbed spine, repaired and Barnard Rev. M.R.: Sport in Norway and Where to Find It, 1864, eng. frontis, red hf. morr. bdg. (2)

£130-180

348

Thomas-Stanford C.: A River of Norway, 1903 1st ed., frontis, 10 b/w pls. col. plt. of Gaula fish ladder, blue clo.; Lloyd Capt. L.: The Field Sports of the North of Europe, 1885 enlarged, revised ed., orig. red hf. morr. bdg. another copy of same re-bound in blue hf. morr. and six further volumes of Norwegian angling interest, various authors, clo. bdgs (9)

£160-240

349

Eikset K.R., Heitmann K & Nielsen J.P.: I Storlaksens Rike, 2001, col./b/w photos throughout text, h.b. d.w. with letters to R.F. from Ivar Leinan of the Alta Board; MNielsen J.P.: *Altas Historie*, 2 vols., photo and text illust., h.b., d.w. and a collection of other Norwegian salmon related vols. including four Alta years books for 1982/84/86 and 1988 (Q)

£100-150

350

Hills J.W.: A Summer on the Test, 1924 ltd. ed. no. 1/300, 12 full pg. dry point illust. by Norman Wilkinson, untrimmed edges, lg. qto., orig, clo. bdg.

£1000-1500

351

Hills J.W.: A History of Fly Fishing for Trout, 1921 ltd ed. 3/50, signed by the author, printed on fine paper, untrimmed edges, green hf. morr. bdg.

£300-400

352

Hills J.W.: River keeper, 1934 1st ed., photo frontis; Hills J.W.: *My Sporting Life, 1936* 1st ed. and Hills J.W & Dunbar I.: *The Golden River, Sport and travel in Paraguay, 1922* 1st ed., b/w photo and text illust. all re-bound in matching red hf. morr. bdgs. ribbed spines with gilt emblems (3)

£130-180

353

Schmookler P & Sils V.: Forgotten Flies, 1999, lge. qto., col. photos throughout text, h.b. d.w.

£200-300

354

Beazley D.: Images of Angling, 2010 deluxe ltd. ed. 26/50, signed by the author and publisher (Tim Benn), bound in woodcut by Chris Wormwell, pencil signed no. 26/100, col. and b/w photos throughout text, full blue morr. Bdg., in clo. slip case

£250-450

355

Buller F.: The Domesday Book of Giant Salmon, 2007, deluxe Baronet edition, no.12/30, signed by the author, recess mounted Baronet gut eyed salmon fly to inside front cover, tied by Colin Simpson (protégé of Megan Boyd), forward by Roy Flury, photo illust. throughout text, hand-made marbled end papers, gilt edges, full maroon goatskin bdg., Ludlow Book Binders, gilt edged, ribbed spine, in slip case, holding copy letter from The Earl Haig to the author (see illustration)

£400-600



356

Buller F.: The Domesday Book of Giant Salmon, Vol. II, 2010 matching the above Baronet ed. no.12/30, signed by the author, photo illust. throughout text, hand-made marbled end papers, gilt edges, full maroon goatskin bdg., Ludlow Book Binders, gilt edged, ribbed spine, in slip case

£250-450

357

Buller F. & Falkus H.: Dame Juliana, The Angling Treatyse and its Mysteries, 2001, FFCL ltd. ed. 323/350, signed by F. Buller, col. photo frontis, b/w and col. photo and text illust., marbled end papers, full maroon goatskin bdg., in slip case

£200-300

358

Buller F.: The Domesday Book of Giant Salmon, 2007 deluxe ltd. ed. no. 8/35, signed by the author, forward by Roy Flury, photo illust. throughout text, marbled boards, gilt edges, maroon goatskin qt. bdg., ribbed spine, in slip case
£300-400

359

Buller F.: The Domesday Book of Giant Salmon, Vol. II, 2010 deluxe ed. no.8/35, signed by the author, photo illust. throughout text, marbled end boards, gilt edges, maroon goatskin qt. bdg., Ludlow Book Binders, gilt edged, ribbed spine, in slip case
£200-300

360

Grimble A.: Salmon Rivers of Scotland, 4 vols. 1899/1900 lge. paper ed., b/w photo plts. and maps, marbled end papers, ex-libris copy with Alfred Harmsworth book plate, green hf. morr. bdg., green clo. boards, gilt top, ribbed spines with gilt leaping fish emblems (4) (see illustration)
£700-1000



361

Fly-Fisher's Club 1884-1934, n.d. c. 1934, col. frontis plt. cartoon by John Rennie, b/w photo plts., C.F. Walker book plate, blue hf. morr. with gilt emblem; The Fly Fisher's Centenary 1884-1984 ed., 1984, b/w frontis by R. McPhail, b/w text illust., green clo. bdg. with applied leather title plaque and holding two menus for the Centenary dinner and The Anglers Club Story 1906-1956, privately pub.1956, b/w photo illust., clo. bdg. in sip case (3)
£130-180

362

Maxwell Sir H. (ed): Chronicles of the Houghton Club 1822-1908, ltd.ed. 170/350, 1908, port. frontis, b/w photo plts., orig. green clo. bdg, gilt top, untrimmed edges, gilt title on leather spine label and Page R.P. (ed) Further Chronicles of the Houghton Club 1908-1931, photo plts., green clo., gilt top, untrimmed edges (2)
£140-180

363

Bated J.D.: Art of the Salmon Fly, 1987 1st ed. authors copy with authors book plate and Federation of Fly Fisherman plate applied to front inside cover, further tipped in New Brunswick Non-Resident 7 day fishing licence, dated Sept 1983 and a Christmas card from Percy Nobbs with actual Phair's White Bucktail tied fly taped in, col. photo plts. of flies, b/w photo and text illust. h.b., d.w. and Wulff L: The Atlantic Salmon, 1958, signed by the author with presentation inscription to Sir Clifford Gothard, col. photo plt. of flies and b/w photo and text illust., h.b., d.w. (2)
£130-180

364

Carmichael H.: The Grand Cascapedia River, 2006, personal inscription from the author to R.F., map plts. col. and b/w photo text illust., black hf. cf. bdg., green clo. bds. With gilt fly emblem, gilt dec. slip case; Swanson R.: Grand Cascapedia Giants, 2005, col. and b/w photo illust., green hf. morr. bdg, marbled boards, in slip case and Davis E.W.: Salmon-Fishing on Grand Cascapedia, FFCL 1994 ed., photo plts, qt. clo. bdg. in sip case (3)
£130-180

365

Griswold Frank Gray: Observations on a Salmon River, 1922 privately printed, presentation copy ink inscribed from the author to H.T. Sheringham 1923, frontis map of the Grand Cascapedia, b/w photo plts., orig. burgundy clo. bdg. with gilt title and emblem
£150-250

366

Francis A.M.: Catskill Rivers, Birthplace of American Fly Fishing, 1983 deluxe ltd. ed. 231/300, presentation copy ink inscribed from the author to R.F., frontis map, b/w photo illust., gilt edged, brown full cf. bdg., ribbed spine, gilt emblem, in slip case; Thomas P. (ed): *On a Canadian River*, 2003 ltd. ed. on handmade paper, photo portrait frontis of Lady Agnes MacDonald, b/w photo plts., untrimmed edges, green morr. spine scale patterned boards, in slip case and Carmichael H.: "8", 2010, presentation copy from author to R.F., photo and text illust, blue clo. in slip case (3)

£150-250

367

Lang A.: Angling Sketches, 1891 lg. paper ltd. ed. 84/150, 3 etchings, photo plts and text illust., fly [pages with embossed lion rampant emblem and W.A. Foyle red and gilt leather bookplate, gilt edged, Zaehnsdorf full green morr. bdg. with gilt emblems, ribbed spine with gilt emblems

£150-250

368

Westwood T. & Satchell T.: Bibliotheca Piscatoria, 1883, gilt top, tan hf. cf. bdg., ribbed spine and Angling Bookplates from the Collection of David Fearing, ltd. ed., h.b. with emblem (2)

£90-130

369

La Branche G.M.L.: The Salmon and the Dry Fly, 1924, ltd. ed. 312/750, col. frontis of flies, orig. qt. cf. bdg., marbled bds.,

£130-180

370

Belton Rev.: The Angler in Ireland, 2 vols., 1834, 2 eng. frontis plts., folding map (vol. II), modern blue hf. morr. bdg., ribbed spines (2)

£140-180

371

Best T.: A Concise Treatise on the Art of Angling, 6th ed., 1804, eng. frontis, tan full cf. bdg. (front board loose), ribbed spine; Knox Dr.: *Fish and Fishing in the Lone Glens of Scotland*, 1854, eng. title pg., re-bound qt. tan cf. bdg. and Oliver S.: *Scenes and recollections of Fly Fishing*, 1834, text engs., green hf. morr. bdg. (3)

£130-180

372

Buller F.: The Domesday Book of mammoth Pike, 1979 1st ed., signed and dated 2006, b/w photo illust., h.b., d.w. clean copy

£200-300

373

Buller F.: Pike, 1971 1st ed., signed and dated Dec. '72, b/w photo illust., blue clo. d.w. (see illustration)

£150-250



374

Buller F.: Angling the Solitary Vice, 2000 ltd. ed. 137/300, signed, col. and b/w photo illust. green clo. bdg.; Buller F.: *The Domesday book of Giant Salmon* 2007, presentation copy from author to R.F., photo illust., h.b., d.w. and four further vols. by Fred Buller: *Pike & the Pike Angler*, 2007, h.b., d.w.; *More mammoth Pike*, 2005, signed presentation copy, h.b., d.w.; *Fish and Fishermen*, 2009, signed presentation copy, h.b., d.w. and Falkus & Buller: *Freshwater Fishing*, 1988, h.b., d.w. (6)

£130-180

375

Buller: The Domesday book of Giant Salmon, 2007 1st ed., six copies, two signed and dated 2008, photo illust., h.b., d.w., new copies and a small collection of reproduction photographs including John Guest 64lb Namsen salmon et al (Q)

£160-240

376

Drewett J.: Hardy Brothers, the Masters, the Men and Their Reels, 1998, col. photo illust. throughout text, h.b., d.w.; Hilyard G.R.: Bogdan, 2006, h.b., d.w. and four further modern vols on tackle and tackle collecting (6)

£120-160

377

A collection of angling related volumes, various subjects and authors including; Oglesby A.; Falkus H.; Chalmers P., Lang A.; Jock Scott; Bailey J., et al, fisherman's maps of the Dee, Tay and Tweed, a small quantity of hunting vols. and three binders of Classic Angling magazine (Q)

£130-180

378

Venables B.: Mr. Crabtree Goes Fishing, a Guide in Pictures to Fishing Round the Year, 1949 1st ed., pict. soft covers, col. and b/w text illustrations, spine damages and another copy 1949 1st ed., spine strengthened (2)

£150-250

379

Lumley & Dowell: Norwegian Anglings 1913, catalogue of available fishing and hunting in Scandinavia, folding map, b/w photo illust., h.b.; Kennard E.: Fishing in Strange Waters, 1889, 30 humorous cartoon plts., h.b. and eight further vols. of Norwegian angling interest, various authors (10)

£100-150

380

Eikset K.R., Heitmann K & Nielsen J.P.: The River Alta and its Salmon Fishery, 2009 Ltd. ed. 20/250, photo illust. throughout text, full black leather bdg. with embossed Alta boat fisherman and gilt title to spine, in slip case

£150-250

381

Tolfrey F.: Jones's Guide to Norway, FFCL 1994 Ltd. ed. 33/66, with actual tied gut eyed Durham Ranger salmon fly set in a recess oval mount on inside of front cover, gilt edges, full black morr. bdg. with gilt emblem and ribbed spine, in slip case (see illustration)

£240-450



Other properties

382

Flury R.: Alten – Reflections, 1993 ltd. ed. 20/150, b/w photo and text illust., gilt top, green hf. morr. bdg., marbled boards, clo., ribbed spine with gilt title, slip case with gilt emblem

£350-450

383

A scarce Hardy Angler's Guide Export Edition, 1948, soft covers, minor tears to spine

£80-120

384

A Hardy's Angler's Guide, 55th ed., 1937 and three copies of the 1937 Coronation ed. (4)

£100-150

385

A Farlow's Tackle catalogue, c.1940, b/w text illust., re-bound with hf. clo., marbled boards and leather spine label with gilt title, another copy of the same edition, a Farlow's catalogue, c.1930 and a 1952 2nd ed. Farlow catalogue with fold out rod display (4)

£120-160

385a

Sparrow W.S.: Angling in British Art, 1923 1st ed., lg. qto., col. and b/w photo plts., blue hf. morr. bdg., ribbed spine with gilt emblem dec.

£100-150

385b

Hardy J.L.: The House the Hardy Brothers Built, 1998 FFCL ltd. ed. 918/950, personal inscription from the author to Barrie Welham (tournament casting champion and tackle maker) and with a further typed letter and Christmas card from the author to B.W., b/w photo plts and text illust., gilt top, full black morr. bdg., gilt dec. spine, in sip case

£90-130

385c

Briggs E.E.: Angling & Art in Scotland, 1908 1st ed., 32 col. plts., dec. clo. bdg.; Ritz C.: *A Fly Fisher's Life*, 1959, personal inscription from author to Barrie Welham and containing a collection of Ritz/Welham related ephemera, clo. d.w. and a small collection of various other angling vols. some signed by the author and with inscriptions to B.W. (Q)

£120-160

386

The Fly-Fisher's Club Journal, a large loose collection of journals dating from 1958 (spring) to 1978 and 1988-2012 complete run, with 24 duplicate copies, eighty eight copies in total (Q)

£140-240

387

Five bound Trout & Salmon magazine volumes, bound for years 1965, 1966, 1967, 1969, 1974 and two further bound volumes of the Salmon & Trout Assoc. Journal 1968-1971, all bound in red hf. morr. bdg. clo. bds., gilt titled spines (7)

£100-150

388

A good collection of various angling volumes, mainly modern hardback editions, various titles and authors including Ritz C.; Armstrong R.; Clarke B.; Goddard J.; McGuane T. et al (Q)

£90-130

389

A similar collection of angling volumes including works by; Gierach J; Haytor T., Babb J.; Righyni; Patterson N.; Lapsley P., HTCT vols et al (Q)

£80-120

389a

Schwiebert E.: Trout, 1979 1st ed. 2 vols, col. and b/w plts. and text illust., brown clo., in slip case and a small quantity of other angling related ephemera including modern Hardy catalogues and Trout & Salmon magazine Vol. 1 No.1 (Q)

£80-120

Rods, Reels & Accessories cont:-

390

A scarce Coxon Aerial model 4104-T1 4" centre pin reel, caged and six spoked drum with twin tapered cow horn handles, single release fork and ebonite flanges, walnut backplate with brass starback foot, stamped "patent" and rear mounted sliding optional check lever with calliper spring check mechanism, small repair to rim of backplate, circa 1900 (see illustration)

£500-800



391

A Hardy Uniqua 4" salmon fly reel, fat ebonite handle, brass foot, nickel silver telephone drum latch, fixed Mk.I check mechanism, interior stamped "J.S." (Jimmy Smith), very little wear to enamel finish, small corrosion spot to rear plate, 1940's

£140-180

392

A Hardy L.R.H. Lightweight trout fly reel, ebonite handle, polished alloy foot, two screw drum latch, rim tension screw and nickel silver "L" shaped line guide, light use only and in original cream card box and a Hardy "Koh-i-Noor" 2 piece cane trout fly rod, 8'9", crimson silk wraps, sliding alloy reel fitting, suction joint, 1962, good condition, in bag (2)

£200-300

393

A Foster's Thumb Magnifier, white metal adjustable bracket with spring thumb clips and circular lens, in original cards box, A Hardy Compact line drier, twin folding alloy adjustable arms, one with ebonite winding knob, wooden handle and a Redmayne & Todd leather coarse fisherman's wallet, interior fitted various cast and tackle compartments, lacking float and line winder, wrap-around strap (3)

£100-130

394

A collection of miscellaneous tackle items including two Nottingham wooden reels, a Milbro 3¾" centre pin reel, boxed, a Hardy card reel box, dry fly oil bottle with leather button tab, various baits, a Malloch japanned dry fly box, two Wheatley alloy dry fly boxes, various flies, seven cane and greenheart rods and other items (Q)

£100-150

395

A scarce Hardy Perfect 3½" trout fly reel, ivory handle, brass foot, strapped rim tension screw and early calliper spring check mechanism, solid drum (no perforations) with milled nickel silver locking screw, faceplate stamped Rod in Hand trade mark and straight line logo, wear to finish from normal use only, circa 1903 (see illustration)

£300-500



396

An interesting Wye Fishery District Licence Book with stub entries dating from 1866-1869 for the rights to use various nets on the river, inside front cover ink inscribed with Scale of Licenses indicated annual prices for the rights to fish, soft cover

£80-120

397

A rare Hardy Curate alloy combination tool, milled priest handle with screw cap oil receiver and spring tweezers with gut cutting blades, tweezer arms stamped make and model details, 1930's

£160-240

398

A Hardy leather salmon fisher's hold-all, burgundy baize line interior with compartmentalised base, lacking drop-in tackle tray, outer case with wrap-around carrying strap, twin locking straps and brass lock, leather tongue lock cover a.f., applied brass name plate to lid and stamped makers details to front panel, 20" x 13" x 8¾" overall, circa 1920

£250-350

399

A very rare Edward Vom Hofe model 360 Perfection No.2 trout fly reel and black leather case, ebonite and nickel silver construction, tapered handle on counter-balanced serpentine crank winding arm, set within an anti-foul rim and mounted above a milled nickel silver five point graduated tension adjuster with red heightened indicator marks, red heightened scroll engraved previous owners initials to face, pierced block foot, stamped model details, triple cage pillars, rear sliding milled optional check button and spindle cap stamped Jan. '83 patent details, reel with light wear from normal use only, leather case with applied nickel silver name plate and stamped makers details, circa 1920 (see illustration)

£3000-4000



400

A fine and rare Hardy Cascapedia 3/0 multiplying salmon fly reel, ebonite and nickel silver construction, 2.5:1 ratio gearing, serpentine crank wind handle set within an anti-foul rim, bridge foot, triple drum pillars (two double roller), rear milled nickel silver domed sliding optional check button and spindle mounted seven point graduated tension adjuster with red heightened indicators and hinged oil port spindle cover, faceplate with three inset alloy medallions, one showing model details and two with Royal coat of arms and Prince of Wales Feathers, reel is in very good overall condition and dates from the production period of 1931 when only 18 models were made in the 3/0 size (see Drewett J.: Hardy Brothers... pgs. 214), arguably the most sought after of all Hardy fly reels (see illustration)

£8000-12000



400a

A framed display of eight classic fully dressed gut eyed salmon flies tied by Fred Brand of Lorraine N.Y., various patterns including Sawada Siren, Avon Eagle, Lone Ranger, N.Y. Butcher, Married Widow et al, set within a lined cream card mount and oak frame 25½" x 24" overall and a further framed display of eight classic salmon flies tied by Jon Harrang, of Corvallis Oregon including Benchill, Black Jay, Double White Winged Balmoral, Polar Shrimp et al, set within a lined cream card mount and stepped wooden frame, 18" x 19½" overall (2)

£250-350

400b

A framed display of seven classic fully dressed salmon flies tied by Jim McCoul of Brookfield Co., including three graduated Huggard flies, Silver Grey, Dandy et al, three smaller frames holding individual gut eyed salmon flies tied by; Jerome Molloy (Rosy Dawn); Ed Muzeroll (Lady of the Island) Dr. Jim Goggans (unknown), a further frame of two gut eyed salmon flies by Dr. David Burns and a frame of three eyed salmon flies, one double tied by Ted Godfrey (Lady Grace), Joseph Soma (Twilight) and Dr. Jogodnik (Morning Star), all set and mounted in glazed framed displays (6)

£300-500

401

A Hardy Altex No.3 Mk.V fixed spool reel, folding left hand wind ebonite handle, full bail arm, in original cream card box and a Hardy Altex No.2 Mk.III fixed spool reel, ebonite folding handle, full bail arm, ebonite spool, in rexine case, both reels with only very light use (2)

£140-180

402

A Hardy L.R.H. Lightweight trout fly reel, ebonite handle, polished alloy foot, two screw drum latch, rim tension screw and nickel silver "L" shaped line guide, light use only and in original cream card box and a Hardy "Deluxe" 3 piece (2 tips) cane trout fly rod, 9'6", crimson inter-whipped, alloy screw grip reel fitting, suction joints, 1954, in bag and alloy tube (2)

£200-300

403

A Hardy "Fairchild" 3 piece (2 tips) cane trout fly rod, 9', green silk inter-whipped, sliding alloy reel fitting, suction joints, 1954, light use only, in bag and alloy tube

£140-180

404

A collection of miscellaneous tackle items including, two boxed Young's Pridex trout fly reels, 3¼" and 3½", a boxed Young's Beaudex 4" salmon fly reel, four Hardy boxed bait mounts, three Wheatley alloy fly boxes with trout and salmon flies, a Sharpe's 3 piece (2 tips) cane salmon fly rod, seven further cane and glass fibre fly/spinning rods, a Hockley minnow box holding minnow baits and various other items (Q)

£140-180

405

A pair of Hardy Neroda No.2 bakelite trout/sea-trout fly boxes, tortoiseshell finish, each box fitted 119 spring metal clips and holding a good selection of sea-trout and trout wet flies, 1940's (2)

£150-250

406

A Hardy Neroda No.8 bakelite trout fly box, oxblood finish, interior fitted chenille bars and holding a selection of small modern salmon double and trebles and an un-named Neroda style box, tortoiseshell finish, fitted chenille bars and holding a good selection of small trout dry flies (2)

£140-180

407

A collection of various baits and mounts including four Hardy HJS Wigglers, a Foster's 2½" Kill Devil, an Allcock 2½" wire mesh minnow, two white and one pink (Hardy?) mother o'pearl 1¾" minnow bodies (lacking spinning vane collars), a 5" archer mount, a Hardy Wee Minnow mount et al (Q)

£100-150

408

Six Hardy Selvyt cloth reel bags, large and small salmon sizes, a Hardy black japanned Halford No.1 mayfly box fitted eight compartments and four celluloid sliding lids, worn, a japanned waistcoat fly box fitted nine compartments beneath three hinged celluloid lids, a small quantity of bug baits and a quantity of various, mainly salmon, flies in boxes contained in a foam lined reel/camera case (Q)

£130-180

409

A Hardy Neroda No.2 bakelite trout fly box, oxblood finish, fitted 119 spring metal clips and holding a selection of trout flies and a Neroda style tortoiseshell trout fly box of similar design holding a selection of mayfly and trout patterns, 1940's (2)

£140-240

410

A rare Chippindale Improved multiplying threadline casting reel, formerly the property of reel inventor John Thomas Chippindale turned and tapered ebonite handle on "S" scroll off-set brass winding handle, alloy gear housing, brass stancheon foot with unusual twin wire line pick-ups, rosewood spool with spindle mounted milled brass tension nut, alloy pick-u stancheon engraved Patent No. 17250, 1910", backplate engraved model and owners' details, excellent condition, circa 1910, Sydney Payne and John Thomas Chippindale patented this model of reel in 1909, (see illustration)

£400-600



411

A rare Hardy brass big game grease gun, of tapered canister form with screw cap grease nipple and twin arm threaded plunger, milled caps, body stamped makers details, rarely seen small size of 3½", 1930's

£200-300

412

A scarce Hardy Anti-Midge repellent bottle, the glass bottle of shouldered cushion form, cork stopper with white metal engine turned stopper and cap, printed label and still holding the repellent liquid, contained in original Hardy brown card and metal edged box black printed image of the bottle to lid, circa 1920 (see illustration)

£250-350



413

A scarce Hardy No.3 Angler's Knife, fitted seven various Sheffield steel tools, hinged shackle and nickel silver side plates, one stamped model details, 1940's

£200-300

414

A scarce Humphries Lightening Spinner 3½" bait, the central spindle mounted with two independently revolving fish shaped blades, one brass, one white metal, each with twin tail spinning vanes, painted decoration and stamped make and model details, head and rear mounted treble hooks (a.f.) and box swivel, circa 1890

£250-450

415

A very rare Victorian cut glass minnow bait, the 2" fish shaped lure with single domed glass side panel cut with gilt flap and claw mounted onto a shaped nickels silver backplate with most unusual incised scale decoration, twin head spinning vanes, ring split ring mounted treble hook and box head swivel, circa 1880 (see illustration)

£1500-2500

.....



416

An Orvis Battenkill V salmon fly reel, grey anodised finish, counter-balanced handle, spring drum latch, little used condition, in cloth bag and a Hardy Ultralite 3 piece carbon salmon fly rod, 15', #10, black/grey tipped silk wraps, screw grip reel fitting, in bag (2)

£130-180

.....

417

A Greys GRXi 7/8 trout/light salmon fly reel, counter-balanced handle, rear spindle mounted tension adjuster, with three spare cartridge spool, a similar Greys GRX 7/8 fly reel and a Greys "GRXi" 3 piece carbon fly rod, 10', #7/8, handle a.f., in tube (3)

£100-150

.....

418

A Hardy Uniqua 3 3/8" trout fly reel, ebonite handle, ribbed brass foot, nickel silver telephone drum latch, rim tension screw and Mk.II check mechanism, used condition, 1930's and a Hardy Marquis 8/9 sea trout fly reel, in zip case (2)

£120-160

.....

419

A Hardy Marksman 4/5 trout fly reel, counter-balanced handle, pillared foot, rear milled spool release wheel, in neoprene pouch and a Sonik skS #5/6 trout fly reel, large arbour drum, counter-balanced handle, rear tension regulator, light use only (2)

£100-150

.....

420

A collection of miscellaneous fishing tackle including Shakespeare and Leeda fly reels, a Mitchell 208s fixed spool reels, various Wheatley, Fox and other fly boxes holding a good selection of salmon and trout flies, A pair of Orvis Sonik gortex lady's chest waders, size MP and matching size 6 Orvis wading boots, twelve rods including Bruce & Walker and Shakespeare salmon fly models, various landing nets and other items (Q)

£140-180

.....

421

A rare Hardy Perfect 4 1/4" auxiliary brake salmon fly reel, ivory handle, alloy foot, rim mounted brass auxiliary rim pressure brake, milled nickel silver rim tension screw and Mk.I check mechanism, drum with milled nickel silver locking screw, faceplate stamped central circular logo and block engraved previous owners initials, wear to finish from normal use, circa 1918 (see illustration)

£500-800

.....



422

A Hardy Super Silex extra wide 4 1/4" bait casting reel, shallow cored drum with twin ebonite handles, jewelled spindle bearing and spring release latch, ribbed brass foot, ivory rim mounted casting trigger and milled tension screw with rear ivory quadrant weight indicator, used condition, 1930's

£200-300

.....

423

A rare Hardy Perfect 2½” wide drummed trout fly reel, domed ivorine handle, brass foot, strapped rim tension screw and early calliper spring check mechanism, drum with four rim cusps and milled nickel silvered locking screw, faceplate stamped open oval and straight line logos, used condition and pillars very neatly replaced at some time, circa 1900, (see illustration)

£500-800



424

A scarce Hardy Taupo Perfect 3⅞” trout fly reel, ebonite handle, alloy foot, white metal line guide, milled rim tension screw and Mk.II check mechanism, light wear to enamel finish only, 1950's

£300-400

425

A fine and rare Hardy Roxburgh salmon fly reservoir, the polished teak rectangular cabinet with leather carrying handle, lid with inset brass name plate, engraved previous owners initials and interior fitted with four lift-out trays, base and each tray fitted with spring metal clips and containing a selection of approximately 100 salmon flies, modern and fully dressed, lid interior with rectangular metal trade plaque, overall excellent condition, 9¾” x 7¾” x 3½” overall, circa 1910 (see illustration)

£2500-3500



426

A Hardy leather trout/light salmon tackle hold-all, burgundy baize lined interior with compartmentalised base and lift out tray, outer case with swing carry handle, twin locking straps and brass hasp lock, twin stamped and black heightened previous owners details and front panel stamped makers name, good overall condition, 16” x 11½” x 8½” overall, circa 1920

£300-500

427

An Orvis Battenkill Large Arbour VI salmon fly reel, counter-balanced handle, ventilated back plate and rear spindle mounted tension adjuster, wear from normal use and an Orvis “Helios Spey” 4 piece carbon salmon fly rod, 14’, #9, screw grip reel fitting, light use only, in bag (2)

£140-180

428

An Orvis Mirage salmon fly reel, counter-balanced handle, ventilated large arbour drum and cage, rear spindle mounted tension adjuster, used condition and an Orvis “Spey” 3 piece carbon salmon fly rod, 14’, #9/10, anodised screw grip reel fitting, one ring whip repaired, in bag (2)

£120-160

429

An Orvis Hydros V large arbour salmon fly reel, counter-balanced handle, ventilated drum and cage, rear spindle mounted check adjuster, light use only and an Orvis prototype 4 piece carbon salmon fly rod, 15’, #10, gold anodised screw grip reel fitting, only very light use, in bag

£140-180

430

An Orvis "Access" 4 piece carbon trout fly rod, 10', #4, brown silk wraps, gold anodised screw grip reel fitting, as new, in cloth covered tube

£100-150

431

A collection of miscellaneous angling items including two Abu Zoom match rods, 13' and 12', in bags; a heavy water adjustable wading staff, leather handle, brass thumb crutch; a Whitlock folding head salmon net; three further nets; a brushed steel fly tying vice, table clamp fitting; a gilt metal casting medal for salmon fly accuracy dated 1955; a quantity of enamel/metal badges and pins; ten pairs of polaroid fishing glasses, various makes and designs and other items (Q)

£140-180

432

A very rare Hardy brass and ebonite 2" crank wind trout winch, tapered horn handle on curved brass crank winding arm with domed brass locking screw, German silver bound rims, brass block foot, triple cage pillars fixed check mechanism, winding handle stamped makers details, good overall condition with wear from normal use only and a very rarely seen model in the smallest size offered for sale, in un-named block leather case, circa 1890 (see illustration)

£1000-1500



433

A Hardy 5" Nottingham walnut centre pin reel, drum with twin horn handles on elliptical brass plates, recessed spindle well and telephone drum locking latch, Bickerdyke line guide, brass starback foot with sliding optional check button and calliper spring check mechanism, foot stancheon stamped makers details, good overall condition, circa 1900

£180-260

434

A rare Hardy St George 3 3/4" 1st model trout fly reel, shallow cored drum with ivory handle, ventilated arbour and milled brass split retaining nut, brass foot (neatly reduced), white agate line guide, (two hairline cracks), brass strapped rim tension screw and Mk.I compensating check mechanism, light wear to finish from normal use and a rarely seen model made 1911/12 only (see illustration)

£1000-1500



435

A fine and rare Hardy 1896 Brass Perfect 4 1/2" salmon fly reel, domed bone handle, bridge foot pierced seven holes, strapped rim tension screw with Turk's head locking nut and early calliper spring check mechanism, open ball race with phosphor bronze bearings, slightly dished drum with two bands of large and small perforations and milled nickel silver locking screw, faceplate stamped Rod in Hand trade mark and enclosed oval logo, reel retains virtually all the original dark bronze patina and is a fine example of this iconic model, circa 1896 (see illustration)

£3000-4000



438

A rare Ainge & Aldred 3" brass multiplying trout winch, off-set turned bulbous bone handle on curved crank winding arm with domed iron locking screw and mounted on raised check housing, rivetted block foot, triple cage pillars, fixed check mechanism, faceplate engraved makers details "Ainge & Aldred, Makers, 126 Oxford Street London", rarely seen make and model, circa 1855 (see illustration)

£600-900

436

A Hardy Perfect 4 1/4" Perfect salmon fly reel, ebonite handle, ribbed brass foot, revolving nickel silver line guide, milled rim tension screw and Mk.II check mechanism, drum with nickel silver locking screw, some wear to enamel finish but in good useable condition, 1950's

£250-350



437

A rare Ellem Fishing Club presentation 4" folding handle brass salmon winch, folding turned bone handle on straight crank winding arm with iron domed locking screw, cut away rim handle recess, block foot, quadruple cage pillars, rear raised check housing and fixed check mechanism, faceplate block engraved presentation details "Ellem Fishing Club, May 1885", wear from normal use only, circa 1855, The Ellem Fishing Club is the oldest trout fishing club in the world, founded in 1829 during the reign of King George IV (see illustration)

£500-800

439

A scarce Gregory 1 1/2" Norwich spoon bait, nickel silvered body with amber/black spot glass eye, incised scale decoration and verso red painted decoration, rear treble, stamped makers name and a Hardy Alnwick Spinner 2 1/2" bait, twin bladed revolving body with hammered decoration, central spindle with ball stop and rear treble, blade stamped makers details, both circa 1900 (2)

£300-400



440

A rare un-named Gregory Cleopatra 3" white metal bait, the hollow fish shaped lure with stepped body, traces of (probably later) painted decoration twin spinning vanes and stud eyes, revolving central spindle with rear treble hook and gimp mounted flying head treble hook, circa 1890 (see illustration)

£1300-1800



441

A Hardy "Halford Knockabout" 2 piece cane trout fly rod, 9'6", #7, crimson silk inter-whipped, alloy screw grip reel fitting, reversible butt spear, studlock joint, 1961 in bag and a Hardy "Houghton" 3 piece (2 tips) cane trout fly rod, 9'6", green silk wraps, tan inter-whippings, screw grip reel fitting, reversible butt spear, 1934, restored, in bag (2)

£130-180

442

An iron salmon/flounder spear, six barbed tines and mounted on heavy Hardy greenheart and brass ferruled 4 section handle, lacking some ferrule sleeves, another smaller four tined flounder spear on fruitwood tapered handle and a copy of Fenton A.: Scottish Salmon Fishing Spears, (3)

£90-130

443

A collection of various tackle including a Nottingham 5½" walnut starback centre pin reel, two further Nottingham reels, a black japanned cantilevered lure cabinet, a Hardy brass headed salmon priest, two brass extending salmon gaffs with turned wooden handles, a brass extending sea-trout gaff, three cane and greenheart rods, two Greys Greyflex M2 carbon trout rod and various other items (Q)

£140-240

444

A G. Main brass 4½" salmon fly reel, cow horn handle, block foot, quadruple cage pillars, fixed check mechanism, faceplate engraved makers details and a Fly Fisher's S.E.J. inch 3¼" brass and ebonite trout fly reel, fixed check, horn handle, bridge foot, German silver rims, backplate with hairline crack (2)

£100-150

445

A very rare Hardy Silex Rex bait casting reel, twin reverse tapered ebonite handles on shaped cross bar alloy winding arm, ribbed brass foot, level line mechanism, milled nickel silver spindle caps, rear optional nickel silver check lever and faceplate with inset spare level line pawl capsule, light wear to lead finish only and a very rarely seen model produced 1935-37 only (see illustration)

£1300-1800



446

A Homer Flick 'Em 4 1/8" narrow drummed centre pin trotting reel, shallow cored drum with twin horn handles, ventilated outer front flange and milled brass locking nut, nickel silver wire line guide, brass stancheon foot, backplate stamped maker and model details and in japanned horseshoe shaped tin case, circa 1910 (see illustration)

£120-160



449

A Hardy Perfect 3 1/8" trout fly reel and block leather case, ivory handle, alloy foot, brass strapped rim tension screw and 1906 calliper spring check mechanism, contracted rum with four rim cusps and milled nickel silver locking screw, faceplate stamped central circular logo, reel retains much of the original dark lead finish, case with replacement strap, circa 1908

£250-450

447

A fine Hardy St George Junior 2 5/16" trout fly reel, ebonite handle, ribbed alloy foot, white metal line guide, three screw drum latch, milled rim tension screw and Mk.II check mechanism, reel retains virtually all the original dark lead finish, in Farlow block leather case, 1940's (see illustration)

£250-450



450

A fine and rare Hardy Zane Grey 7" multiplying big game reel, constructed in corrosion proof Monel metal, 2.5:1 ratio gearing, off-set turned ebonite handle on short crank winding arm mounted above a five point capstan star drag adjuster, bronze spindled drum, four rim mounted harness lugs, tow oil and grease ports and auxiliary leather brake pad, rear plate with milled optional check lever, pierced bridge foot, faceplate inset royal coat of arms and Prince of Wales appointment medallion and rear plate with two further circular inset medallions; "The Hardy Zane Grey - Size 7", To Hold 1000yds. 39 Thread" and "Made by Hardy Bros. Ltd. Alnwick, England", 1930's, the reel is in overall very good condition with only very light signs of use (see illustration)

£4500-6500

* Factory record show only 57 examples of this size Zane Grey having been produced between 1928 and 1949 (see Drewett J.: Hardy Brothers... pg.583)

448

A Hardy Wardle magnifier, black japanned finish, folding circular lens and bar brooch clip, stamped makers details and a Hardy alloy Driflydresser the racquet shaped gadget with two plates of felt and amadou, a Hardy steel gut gauge in leather sleeve, a hardy brass salmon spring balance 0-30lbs and a pair of Hardy Scissor pliers (5)

£140-180



451

A two page typed letter from L.R. Hardy to Zane Grey, on Hardy Bros. headed paper and dated 21st December 1926 concerning Hardy's willingness to design a big game reel to Zane Grey's specifications, with some suggestions and ideas on the requirements for such a reel from L.R. Hardy, mounted in diptych form within a burr walnut and glazed frame 18½" x 25" overall

£250-450

452

An Allcock tradesman's rexine fly folio, the rectangular folio opening to reveal four trade cards of eighty seven salmon and trout flies mounted on gilt bordered paper sheets with stag logo, and feint ink pattern descriptions, black rexine outer case stamped Stag logo and makers details within a lined border, circa 1910

£200-300

453

A good J.K. Wheeldon "Quadrante Model 1" 2 piece square built cane trout fly rod, 7'9", #5, mid-tan silk wraps, wooden reel seat with sliding alloy fitting, suction joint, little used condition, in bag and alloy tube

£140-180

454

A Hardy "Palakona" 2 piece cane brook trout fly rod, 7'2", #5, crimson/green tipped silk wraps, sliding alloy reel fitting, 1975, tip neatly repaired and a Hardy C.C. de France" 2 piece cane trout fly rod, 7', tan silk wraps, sliding brass reel fitting, tip neatly repaired, in bags (2)

£140-240

455

A Hardy Bouglé 3" limited edition trout fly reel, no. 0870, wooden handle, nickel silver foot, raised triple pillars (one nickel silver roller), strapped rim tension screw and 1906 style calliper spring check mechanism, drum with milled nickel silver locking screw, faceplate stamped make and model details, new/unused condition, in block leather case and card box (see illustration)

£200-300



456

A Hardy Bouglé 3" limited edition trout fly reel, no. 0890, wooden handle, nickel silver foot, raised triple pillars (one nickel silver roller), strapped rim tension screw and 1906 style calliper spring check mechanism, drum with milled nickel silver locking screw, faceplate stamped make and model details, new/unused condition, in block leather case and card box

£200-300

457

A Hardy Featherweight trout fly reel and spare spool, ebonite handle, alloy foot, two screw drum latch, rim tension regulator and compensating check mechanism, in fitted teak case and with original card box and zip case, light use only and a pair of Hardy Flyweight spare spools, in matching teak case and with card boxes

£140-180

458

A Hardy "Phantom" 2 piece cane brook trout fly rod, 6'10", #5, black/crimson tipped silk wraps, sliding alloy reel fitting, suction joint, 1966, in bag

£160-240

459

A good Hardy "Hollolight" 3 piece (2 tips) hollow built cane trout fly rod, 8', gold/black tipped silk wraps and gold inter-whippings, anodised sliding reel fitting, suction joints, 1960, light use only, in bag

£200-300

460

A Hardy "Graphite Smuggler" 6 piece carbon brook trout fly rod, 7', #5, black/scarlet tipped wraps, sliding alloy reel fitting, spigot joints, some rings re-whipped and a Grey's "Streamline" 4 piece carbon trout fly rod, 8'6", #5, screw grip reel fitting, in later bags (2)

£130-180

461

A Constable "Wallop Brook" 2 piece cane brook trout rod, 7'6", scarlet silk wraps, sliding alloy reel fitting, staggered ferrule, suction joint, in bag

£100-50

462

A collection of various fishing items comprising a Marco Cortesi 4¼" centre pin reel, in bag, three Wheatley alloy trout fly boxes and flies, a pair of Orvis gortex chest waders, size M, a wooden fly tying chest, fitted interior of seven sliding drawers and holding a selection of various tying materials and a Veniard set of fly tying cards (Q)

£100-150

463

A rare Hardy Brass Faced Perfect ¾" wide drummed light salmon fly reel, ivory handle, brass foot, strapped rim tension screw and early calliper spring check mechanism, slightly dished drum with four rim cusps and milled nickel silver locking screw and faceplate stamped open oval and straight line logos, light wear from normal use and a rarely seen size, circa 1900 (see illustration)

£600-900



464

A Scarce Hardy St George 3" trout fly reel, ivory handle, alloy foot, white agate line guide (two fine hairline cracks), three screw drum latch, milled rim tension screw and Mk.I check mechanism, lower drum pillar is fitted with a small rivetted brass fly keeper loop, possible to special order, wear from normal use only, circa 1920

£450-650

465

A rare Hardy Ryder patent brass linear reel, one piece frame to take rod butt and hollow rod section, 2" plate wind integral reel with tapered horn handle and rear plate with four cut-away sections, fixed check mechanism, tapered butt section pierced to take screw-in rod section, stamped makers details, circa 1890 (see illustration)

£700-1000



466

A Hardy Perfect ¾" salmon fly reel, ebonite handle, ribbed brass foot, milled rim tension screw and Mk.II check mechanism, drum with nickel silver locking screw, wear top enamel finish, 1950's

£180-260

467

A rare Hardy Brass Faced Perfect 3 3/8" trout fly reel, ivorine handle, brass foot, strapped rim tension screw and early calliper spring check mechanism, solid alloy drum (no perforations) with four rim cusps and milled nickel silver locking screw, faceplate stamped Rod in Hand trade mark and straight line logo, neatly block engraved previous owners name, light wear from normal use only, circa 1902 (see illustration) **£1000-1500**



468

A J.P. Thebault silk double taper fly line, #3, 17m length, as new, in box with tin of line dressing and another by the same maker DT #5 also as new, boxed and with tin of line dressing (2) **£100-150**

469

An Abel Super 8 saltwater/light salmon fly reel and spare spool, left hand wind black anodised model with counter-balanced handle, large arbour drum and rear milled spindle mounted tension adjuster, as new condition in pouch (see illustration) **£200-300**



470

A 19th Century folding handle salmon gaff, Firth steel head, brass knuckle joint and tapered fruitwood handle with turned grip, circa 1890 and two Hardy Lightweight folding trout landing nets, one trout, one brook size, alloy handles (3) **£90-130**

471

An Allcock Collapsible Spoon 1 1/2" bait, split silver blade mounted on revolving central spindle, rear treble hook, stamped makers details, two small Foster's Kill Devil baits, 2" and 1 1/4", a Geens 1 1/4" Combination spoon, painted decoration, a G.P. Graham 1 3/4" copper bait stamped makers details and a Farlow boxed Victoria 1 3/4" spoon bait (6) **£130-180**

472

Four Cairnton style salmon fisher's priests, each with alloy shaft, brass head and disc knop and a pair of small brass priests, engine turned shafts (6) **£90-130**

473

A fruitwood salmon fisher's priest, bulbous head, turned grip, 7" long, a lignum Vitae salmon priest of slender truncheon form, 9 1/2" long, a tapered rosewood salmon priest, brass head and milled knop, 8 1/2" and a tapered horn salmon priest, weighted head, 7 1/2" (4) **£120-160**

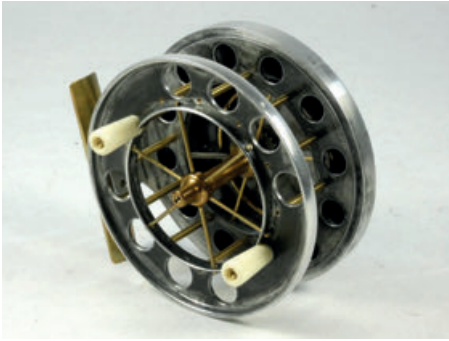
474

A fine Richard Carter Merlin 4" centre pin reel, black anodised finish, shallow cored drum with twin composition handles and three screw spindle cover, alloy stancheon foot, rear mounted sliding optional check button with bar spring check mechanism and milled spindle nut, as new condition, in card box **£300-400**

475

A fine Paul Witcher "1920 Aerial" 4" wide drummed centre pin reel and block leather case, caged and six spoked drum with twin tapered ivorine handles, ventilated front and rear flanges (eight holes) and rear drum release fork, brass stancheon foot, rear brass sliding optional check button and calliper spring check mechanism, backplate interior stamped "25", distressed leaded finish and in as new/unused condition (see illustration)

£800-1200



476

A scarce Bruce & Walker "Hexagraph FT Carp" 2 piece carbon carp rod, 12', 2lbs. t/c, crimson silk wraps, sliding alloy reel fittings, spigot joint, natural cane finish, as new condition, in bag

£200-300

477

A Shimano "Technium Specialist" 3 piece carbon coarse rod, 12', twin top sections and various quiver tips, in bag and tube and three further Shimano coarse rods; a Stradic "Multi Range Feeder", 3 piece, 12-14'; a Stradic "Specimen" 2 piece, 12' and a Stradic "Match" 3 piece, 13', in bags (4)

£130-180

478

A pair of Shimano Stradic 4000 fixed spool reels and spare spools, pearlescent anodised finish, twin power handles and four other Shimano bait runner fixed spool reels with spare spool; two Aero Gt 6010; Aero Perfection 3500MW and Super Match RE, all in zip reel cases (6)

£140-180

479

A Hardy St George 3 3/8" trout fly reel, ebonite handle, ribbed brass foot, white agate line guide (no cracks), three screw drum latch, milled rim tension screw and Mk.II check mechanism, wear to finish from normal use, 1930's

£150-200

480

A Hardy Sea Silex 5" alloy bait casting reel, twin reverse tapered ebonite handles, brass block foot, nickel silver telephone drum latch, rim mounted ivorine casting trigger and two further casting controls, backplate stamped model details, wear from normal use, 1920's (see illustration)

£300-400



481

A good C. Farlow & Co. Ltd Patent Lever brass 4 1/2" salmon fly reel and block leather case, waisted cow horn handle, pierced block foot, quadruple cage pillars, silent action (no check), rear raised disc drum tension adjuster, block engraved makers details, reel retains virtually all the original dark bronze finish, circa 1920

£160-240

482

A Farlow's "150" limited edition 2 piece (2 tips) cane trout fly rod, no. 81/150, 7'10", blue/crimson tipped silk wraps, wooden reel seat with sliding nickel silver fitting, staggered ferrule, suction joints, as new condition with plastic wrapper still to handle, in bag and teak presentation case

£280-360

483

A Hardy "Perfection" 2 piece cane trout fly rod, 9', crimson silk inter-whipped, alloy screw grip reel fitting, lockfast joint, 1955, rings re-whipped and a Hardy "Tourney" 2 piece cane trout fly rod, crimson wraps, sliding alloy reel fitting, 1936, requires some attention, in bags (2)

£100-150

484

A Sharpe's "Eighty Five" two piece cane trout fly rod, 8'5", #5/6, green/crimson tipped silk wraps, sliding alloy screw grip reel fitting, staggered ferrule, suction joint, light use only, in bag

£130-180

485

A Young's Purist 2042 Special Edition 4½" centre pin trotting reel, Shallow cored drum with six spokes, twin composition handles, ventilated front flange and twin regulator/release forks, B.P. line guide, polished alloy foot, rear optional check lever and bar spring check mechanism, no. 038/250, as new condition and in leather zip case and teak presentation box (see illustration)

£200-300



486

A Greys Bewick 4" centre pin reel, shallow cored drum with twin composition handles, ventilated flanges and spring release latch, stancheon foot, rear sliding optional check button and bar spring check mechanism, as new, in box and cloth pouch and an Okuma Aventa VT1002 4½" centre pin reel, bronze anodised finish, twin handles, rear sliding check button and bar spring check mechanism, light use only, in zip case (2)

£140-180

487

An Arnold Kingpin 4½" centre pin reel, blue anodised finish, shallow cored drum with twin handles, ventilated front flange, brass stancheon foot, rim mounted optional check lever and bar spring check mechanism, rear milled drum locking nut, only very light signs of use (see illustration)

£180-260



488

A Hardy Marquis #6 trout fly reel, composition handle, alloy foot, two screw drum latch, nickel silver "U" line guide and rear tension adjuster, light use in zip case and card box and a Hardy "Deluxe" 2 piece carbon trout fly rod, 9', #6/7, crimson/scarlet tipped silk wraps, anodised screw grip reel fitting, in bag (2)

£130-180

489

A Hardy Marquis #7 Multiplier trout fly reel and spare spool, composition handle on raised drive plate, alloy foot, nickel silver "U" line guide and rear tension adjuster, light use from normal wear, in zip cases and a Hardy "Stillwater" 3 piece carbon trout fly rod, 11'6", #6/7, crimson/scarlet tipped silk wraps, anodised screw grip reel fitting, in bag (2)

£140-180

490

A very rare Farlow Billiken multiplying bait casting reel, alloy construction with 3:1 ratio gearing, off-set ivorine handle on counter-balanced arm which disengages the spool for casting when raised and turned, rear open plate recess to house the patent fan casting regulator, nickel silvered block foot and triple pillared drum cage, faceplate stamped makers details and Holdfast logo, 2½" diameter, excellent condition and in fitted pine case circa 1915 (see illustration)
£1000-1500



491

A good Hardy All-in-One leather trout fisher's compendium wallet, the rectangular pigskin case holding a Neroda bakelite trout fly box fitted chenille bars and holding a selection of flies, a brass 0-4lbs spring balance, a waxed cloth damper pouch and chamois leather and parchment cast pouch, gilt stamped makers name and with wrap-around strap, 1930's
£250-350

492

A good Allcock Aerial model 7950-T9 4 wide drummed centre pin reel, caged and six spoked drum with twin xylonite handles, ventilated front flange (eight holes) and twin release/regulator forks, B.P. line guide, brass stanchion foot, rear sliding optional check button and bar spring check mechanism, backplate stamped roundel trade mark, reel retains much of the original finish, circa 1925 (see illustration)
£350-550

493

A rare early Victorian Water Witch 1½" gilt metal minnow bait, the hollow fish shaped tapered body pierced five holes to each side for gut mounting flying treble hooks, twin head vanes and lipped tail, illustrated in Hewett Wheatley: The Rod and Line or Practical Hints and Dainty Devices for Sure Taking, pub.1849
£450-650

494

A rare Gregory Excelsior Minnow 1½" bait, the white metal fish shaped lure with painted brown trout decoration, twin spinning vanes, one stamped model and one makers details, one rear and two side mounted treble hooks, head mounted box swivel, 1880's (see illustration)
£1300-1800



495

A very rare J. Fawcett of Sedbusk leather potbellied creel, the steamed leather body with stitched rear seam and embossed belt loop, cream painted interior and brass hinged lid with embossed sunburst and running geometric border decoration, small section missing to front of lid lip where hasp drop lock was original located, lid interior faintly white paint inscribed "John Fawcett, Sedbusk, Hawes, 31st May 1856", creel with scalloped escutcheon and brass turnkey lock, script engraved "J. Fawcett, Sedbusk", 11½" wide (see illustration)

£1500-2500



496

A Hardy Birmingham 3¼" brass light salmon fly reel, ebonite handle, bridge foot, quadruple cage pillars, fixed check mechanism, faceplate with raised two screw spindle boss and stamped Rod in Hand trade mark and enclosed oval logo, clean example3, circa 1897

£180-260

497

A rare Hardy Field 4¾" salmon fly reel, lipped faceplate with ivorine handle and two screw spindle boss, bridge foot, quadruple pillars, brass drum and previously unseen additional rim mounted brass optional check lever, backplate with raised brass spindle boss and faceplate stamped model details, circa 1897 (see illustration)

£600-900



498

A scarce Hardy Brass Faced Perfect Houghton Dry Fly 2½" wide drummed trout fly reel, domed ivorine handle, brass foot, strapped rim tension screw and early calliper check mechanism, slightly dished drum with four rim cusps and milled nickel silver locking screw, faceplate stamped Rod in Hand trade mark, enclosed oval and straight line logos, wear from normal use only, circa 1900 (see illustration)

£1000-1500



499

A rare Hardy Uniqua 3½” silent check trout fly reel, ivorine handle, brass foot, nickel silver horseshoe drum latch and fitted with a previously unseen silent pressure brake check mechanism that applies pressure to the drum when line is being taken out, backplate stamped model details, possibly a prototype model which did not go into production, circa 1920

£250-450

500

A fine and rare Hardy 1891 Brass Perfect 3” trout fly reel, domed ivorine handle, stancheon foot pierced three holes and stamped “107”, nickel silver half wire line guide mounted on two raised lugs, rim strapped tension screw and early calliper spring check mechanism, open ball race with steel bearings, slightly dished drum with central spindle recess and two bands of large and small perforations, faceplate stamped Rod in Hand trade mark and circular 612 patent details, reel is in excellent condition and retain much of the original dark bronze patina, circa 1891 (see illustration)

£4000-6000



501

A Hardy No.3 Trade 3½” trout fly reel, black “wartime” painted finish, xylonite handle, brass foot, nickel silver telephone drum latch, white metal line guide, milled rim tension screw and Mk.II check mechanism, wear to finish from normal use, circa 1945

£200-300

502

A very rare Hardy Perfect 3½” trout fly reel, formerly the property of F.M. Halford, factory modified to Halford’s specifications and with ivorine handle, rivetted alloy foot, fitted white agate line guide (no cracks), two alloy drum pillars only, 1906 fixed calliper spring check mechanism (no regulator), ventilated interior cage plate as used on the 1908-1910 silent check model, contracted drum with cork arbour, four rim cusps and replacement nickel siler locking screw, faceplate stamped central circular logo and block engraved “F.M.H. 1908 No.2”, 1908, small crack where the later line guide has been fitted and with neat repair inside the cage rim otherwise reel is in good overall condition and retains much of the original lead finish. In the early years of the 20th Century Halford worked closely with John James Hardy to produce several modifications to existing reels along with the development of a number of new models. Previously sold through Angling Auctions in Pt. I of the F.M. Halford collection, October 2004 (see illustration)

£1300-1800



503

A Constable “Wallop Brook” 2 piece cane brook trout fly rod, 6’9”, #4, black silk wraps, sliding alloy reel fitting, suction joint, in bag and a Partridge 2 piece cane brook trout fly rod, 6’6”, #4, crimson green tipped wraps, wooden reel seat, butt ring re-whipped, in bags (2)

£140-180

504

A Sharpe's "Fario Club" 2 piece cane trout fly rod, 8'5", #5/6, green/scarlet tipped wraps, alloy screw grip reel fitting, staggered ferrule, suction joint and a Sharpe's "Scottie" 2 piece cane trout fly rod, 10', #6, crimson wraps, alloy screw grip reel fitting, in bags (2)
£90-130

.....

505

A scarce Illingworth No.3 threadline casting reel, painted bronze exposed gearing, stepped ebonite handle, finger pick-up line guide, nickel silver rimmed alloy spool with graduated tension adjuster, light user only and in original rexine case, circa 1920
£150-200

.....

506

A Hardy Hardex No. 2 Mk.II threadline casting reel, turned ebonite handle, half auto bail arm, ebonite spool with brass tension adjusting arm, in original rexine case and with two spare spools and line guide and a Helical threadline casting reel and spare spool, in rexine box (2)
£90-130

.....

507

A J.W. Young's John Wilson Heritage 2000 4½" centre pin reel, green anodised finish, caged and six spoked narrow drum with twin composition handles, ventilated plates and twin release/regulator forks, wire B.P. line guide, stancheon foot, rear mounted optional check lever with bar spring check mechanism, interior backplate numbered 0247, as new condition in box and zip case (see illustration)
£180-260



508

A Perfection Flick 'Em 4½" narrow drum centre pin reel, polished alloy drum with twin xylonite handles and milled tension wheel, brass foot, rear sliding brass optional check button, light use only and a Hardy "Fred Taylor Trotter" 2 piece glass fibre float rod, 11'3", green/scarlet tipped wraps, sliding alloy reel fittings, detachable handle, light use only, in bag
£100-150

.....

509

A collection of ten carbon and glass fibre coarse/carp rods, various makes and models including Diawa, Shimano, Leeda, Drennan, Penn et al, used condition, in bags (10)
£140-240

.....

510

A collection of various reels including a Shimano Triton Mag Mk.IV multiplier, in box, a Mitchell 300 fixed spool reel and spare spool, various other fixed spool and centre pins by TF Gear, Gryce & Young, Alvey et al (Q)
£120-160

.....

511

A Hardy "Salmon Deluxe" 3 piece carbon salmon fly rod, 15¼", #10, crimson/scarlet tipped wraps, anodised screw grip reel fitting, spigot joints, in bag, four various Hardy graphite trout fly rods and two further Hardy graphite/fibre glass salmon spinning rods, in bags (7)
£150-250

.....

512

A Hardy Marquis #6 trout reel and spare spool, composition handle, alloy foot, two screw drum latch, nickel silver "U" line guide and rear tension regulator, light use, in zip case and a Hardy "Ultralite" 2 piece carbon trout fly rod, 10', #6, alloy screw grip reel fitting, in bag and tube (2)
£120-160

.....

513

A Hardy Marquis #8/9 sea-trout/light salmon fly reel and spare spool, composition handle, alloy foot, two screw drum latch, nickel silver "U" line guide and rear tension regulator, light use, in zip case and card box and a Hardy "Deluxe" 3 piece carbon sea-trout fly rod, 11', #8/9, crimson/scarlet tipped wraps, anodised screw grip reel fitting, spigot joints, in bag (2)

£120-160

514

A Hardy style Sportsman's walking/shooting stick, folding leather seat on alloy framed loop handles and mounted on triple spring locking legs

£100-150

515

A Hardy Perfect 3 $\frac{5}{8}$ " trout fly reel and block leather case, ivorine handle, brass foot, red agate line guide (one hairline crack), brass strapped rim tension screw and 1906 calliper spring check mechanism, contracted drum with four rim cusps and milled nickel silver locking screw, faceplate stamped central circular logo, wear from normal use, circa 1908 (see illustration)

£350-550



516

A Hardy St George Junior trout fly reel, reproduction model with ebonite handle, ribbed alloy foot, white metal line guide, three screw spring latch, milled rim tension screw and Mk.II check mechanism, unused condition

£180-260

517

A rare Hardy St George silent check 3 $\frac{3}{4}$ " trout fly reel, shallow cored drum with ebonite handle and three screw spring latch, white agate line guide (no cracks), brass foot, milled rim tension screw and silent check mechanism, wear to finish from normal use, circa 1930 (see illustration)

£450-650



518

A Hardy Perfect 4 $\frac{1}{4}$ " salmon fly reel, domed ivorine handle, brass foot, revolving nickel silver line guide, strapped rim tension screw with Turk's head locking nut and 1912-17 heavy duty check mechanism, drum with four rim cusps and milled nickel silver locking screw, faceplate stamped central circular line guide, wear to finish from normal use, circa 1912

£300-500

519

A Hardy Uniqua 3 $\frac{1}{2}$ " light salmon fly reel, ebonite handle, ribbed brass foot, nickel silver telephone drum latch, fixed Mk.II check mechanism, foot very neatly reduced in thickness to fit modern rod, light wear to lead finish from normal use, circa 1930

£140-180

520

A very rare Hardy Perfect 2¾" narrow drum trout fly reel, ivorine handle, brass foot, strapped rim tension screw and 1912 check mechanism, drum with four rim cusps and milled nickel silver locking screw, faceplate stamped central circular logo, light wear from normal use only and a very rare size made for two years only in very limited numbers, circa 1912 and in un-named black leather case (see illustration)

£800-1200



521

An Orvis Battenkill Disc 8/9 sea-trout fly reel, counter-balanced handle, alloy foot, rear tension adjuster, little used condition and a pair of Orvis Battenkill 7/8 trout fly reels of similar design (3)

£120-160

522

A Hardy Viscount 130 trout fly reel, composition handle, two screw drum latch, rear check adjuster, in original box, three further Hardy Viscount trout fly reels; a 130 and two 140 Mk.II with spare spool and a Marquis #7 trout fly reel, replacement handle and a Greys GRX 7/8 fly reel with two spare spools (6)

£130-180

523

An Abu Ambassadeur 20 big game reel, off-set "T" bar crank handle, rim lever drag, rear free spool and tension controls, used condition, in rexine case, an Abu Ambassadeur 6001c bait casting reel, black finish, twin handles and an Abu Ambassadeur 2500c bait casting reel, graphite finish, twin handles (3)

£120-160

524

A Farlow 3½" alloy salmon fly reel, ivorine handle, brass foot, triple brass pillars, lacking drum locking screw, circa 1915, a Wickham's 3¾" salmon fly reel and spare spool, light use only, in zip case, a quantity of various other fly, fixed spool and centre pin reels, various makes and models, a Hardy pigskin trout fly wallet and a Hardy bakelite Album cast case (Q)

£120-160

525

An Orvis "Clearwater" 2 piece carbon trout fly rod, 8'6", #5, crimson wraps, screw grip reel fitting and wooden seat, in bag and tube and six various other carbon and glass fibre trout fly rods, various makes including Orvis and Browning (7)

£130-180

526

A collection of eighteen various cane trout and salmon fly rods, various makes and models by Sharpe's, Cummins, Arjon et al, some requiring restoration, in bags (18)

£150-250

527

A rare Hardy 1896 Brass Perfect 2½" wide drummed trout fly reel, domed ivorine handle, bridge foot pierced seven holes, strapped rim tension screw with Turk's head locking nut and early calliper spring check mechanism, open ball race with phosphor bronze bearings, slightly dished drum with two bands of large and small perforations and milled nickel silver locking screw, faceplate stamped Rod in Hand trade mark, enclosed oval and straight line logos, light wear to patina from normal use, circa 1897 (see illustration)

£2500-3500



528

A fine Hardy Perfect 3¾" trout fly reel, ivorine handle, brass foot, strapped rim tension screw and 1906 calliper spring check mechanism, contracted drum with four rim cusps and milled nickel silver locking screw, faceplate stamped central circular logo, reel has been factory restored to as new condition, circa 1908

£250-450

529

A good Hardy Hercules 4¼" brass salmon fly reel, long horn handle on raised winding plate, pierced and waisted bridge foot, quadruple cage pillars, fixed check mechanism, faceplate with raised two screw spindle boss and stamped Rod in Hand trade mark and enclosed oval logo, light wear to bronze patina, circa 1895

£200-300

530

A scarce Hardy Brass Faced Perfect 4¼" salmon fly reel, domed ivorine handle, brass foot, fixed nickel silver line guide, strapped rim tension screw (strap lacking one screw) with Turk's head locking nut and 1906 calliper spring check mechanism, slightly dished drum unusually perforated with three bands of graduated ventilation holes and milled nickel silver locking screw, faceplate stamped Rod in Hand trade mark and straight line logo, wear from normal use, circa 1906 (see illustration)

£500-800



**** END OF SALE ****

NOTES

COMMISSION BIDS – TERMS AND CONDITIONS

1.
Commission bids will be executed as cheaply as any other bids or reserves allow, and are carried out free of charge.
2.
All bids shall be treated as offers made on the Notice and Conditions of Sale printed in the catalogue.
3.
A maximum bid (exc. Premium and V.A.T.) should be indicated over “Buy” or unlimited bids will not be accepted.
4.
In the event of identical bids, the earliest will take precedence.
5.
Commission bids left by telephone should be confirmed by email or in writing.
6.
All commission bids are left entirely at the Buyer’s risk, and neither the Auctioneers, their agents or staff will be responsible for any errors in the execution of bids howsoever caused.
7.
Successful commission bidders will receive an invoice detailing purchases, and giving instructions for payment and collection of goods.

(Continued from inside front cover)

2. Payment

- (a) The Auctioneers shall pay the Proceeds of Sale to the Vendor seven days after the date of sale if the Auctioneer has been paid the Purchase Price in full by the Buyer.
- (b) If by due date the Auctioneers have not received payment in full from the Buyer the Proceeds of Sale will be paid seven days after full payment is received by the Auctioneer.
- (c) In the event of a defaulting buyer the Auctioneer reserves the right to cancel the sale on any lot(s) purchase and to return title of goods to the vendor.

3. Warranty & Indemnity

- (a) The Vendor warrants to the Auctioneer and to the Buyer that he is and will be able to transfer good and marketable title to the lot free from all liens and encumbrances.
- (b) The Vendor shall indemnify the Auctioneers, agents and the Buyer against all claims made or proceedings brought by persons entitled or purporting to be entitled to the Lot and shall reimburse the Auctioneers on demand for all payments, expenses, costs or any other loss or damage whatsoever made, incurred or suffered as a result of any breach by the Vendor of (a) above.

4. Insurance

No insurance charge is made. Insurance of all Lots will be the responsibility of the Vendor and the Auctioneer will not be liable for any loss or damage howsoever caused.

5. Vendor's V.A.T. Status

The Vendor shall give the Auctioneer all relevant information as to his VAT status with regard to the Lot(s) to be sold which he warrants is and will be correct and upon which the Auctioneer shall be entitled to rely.

6. Photography

The Auctioneers reserve the right to photograph any item(s) for reproduction in catalogues or for publicity purposes. There is a maximum charge of £30.00 for black and white and £150.00 for colour photographs (together with any VAT chargeable thereon).

7. General

The Auctioneer shall have absolute discretion as to the following:-

- (a) Whether to offer any Lot for sale or not
- (b) The description of any Lot in the catalogue
- (c) The printed estimated price of any Lot in the catalogue.

In these Conditions of sale the following words and expressions shall have the following meaning:-

"The Auctioneers"	Angling Auctions
"Hammer Price"	the price at which the Lot is Knocked down to the Buyer.
"Lot"	any item deposited with Angling Auctions with a view to sale at auction, in particular, the item or items described against any lot number in the catalogue
"Proceeds of Sale"	the net amount due to the Vendor being the Hammer Price less commission and any other charges due as published in the above Conditions of Sale
"Purchase Price"	the Hammer Price plus any premium, VAT chargeable and expenses due from a defaulting Buyer under condition A6 (b)
"Unsold Lot"	those Lots which fail to reach their reserve or attract a bidder

Location:

Crosfield Hall is conveniently located on the outskirts of historic Romsey town centre and within two miles of the M27/M3 motorway. The Hall is located opposite the entrance to Broadlands House which is signposted from all major routes – satnav postcode finder is SO51 8GL. There is long term Pay & Display parking at the venue.

Trains:

Romsey railway station has regular services from Southampton Central and Airport Parkway stations. Regular trains from Winchester (via Southampton Central) to Romsey and direct trains from Salisbury to Romsey for those coming from the west.

Buses:

Regular Blue Line (No. 4) buses from Southampton Central Station to Romsey bus station (located directly opposite Crosfield Hall). Winchester Bus Station to Romsey bus station via Stagecoach (No.66) and Salisbury Blue Star bus service (no. X7) to Romsey bus station.

Airport:

Romsey is located 15 minutes taxi ride from Southampton Airport. Regular trains from Gatwick (via Clapham Junction) to Southampton Airport Parkway/Central train stations. Arrangements can be made for overseas clients to be collected from Southampton Airport or Southampton Airport Parkway/Central train Stations.

Please contact the auctioneers for further information or assistance

