

2017

For the Record...



Executive Degrees wrapped up a record recruiting year, resulting in:

422

new INSEAD participants:

108

EMCCCs

37

TIEMBAAs

86

GEMBA-Asia

53

in GEMBA Middle East, and

96

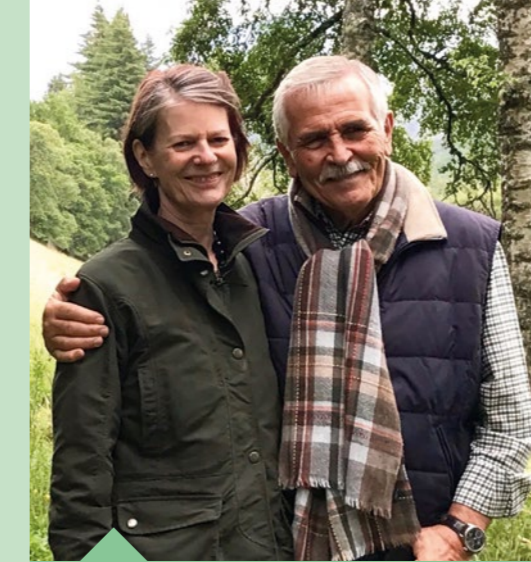
GEMBA Europe



20 Centres of Excellence: our highest number ever

€245m

Highest revenues overall



Largest ever amount distributed in scholarships



Highest % of female MBA entrants ever

709

Highest average MBA GMAT score

10,000+ participants for Open executive programmes



€33.6m

Highest amount ever raised in philanthropic funding in a single year

€10m

Largest single (alumni) gift (Rudolf & Valeria Maag)



900

Highest attendance at summer ball

Highest ranked MBA programme in the world

- according to the FT - for the second year in a row... but plenty of records of our own too:



Largest ever MBA graduation ceremony in Asia

53

in GEMBA Middle East, and

96

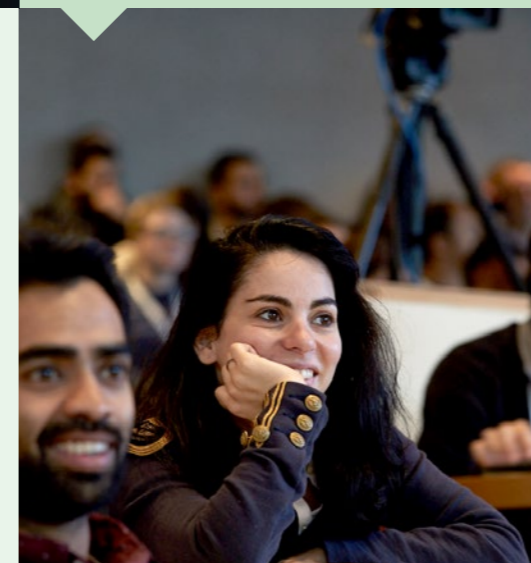
GEMBA Europe



Crossed the 200 threshold for PhD alumni

€212.5m

Highest ever value of INSEAD endowment



Largest ever irrevocable legacy gift (Lionel Sauvage)

13.9%

Highest ever annual growth rate of Executive Education revenues



Highest number of online participants

iW50: Celebrating 50 years of women at INSEAD



Record traffic on INSEAD Knowledge



3,578 individual donors



28%

Largest ever proportion of students with scholarships

347

Largest ever number of school students at Summer@INSEAD

Contents

02	From the Chairman	26	Class Statistics
04	From the Dean	28	Career Development Centre
08	Faculty and Research	30	World of Talent
10	Centres of Excellence	32	Executive Education
12	Faculty Recognition and Awards	36	Advancement
14	Celebrating INSEAD Case Studies	40	The Infrastructure of Excellence
16	New Faculty	42	Finances
20	Doctoral Programme	44	Endowment
22	INSEAD Knowledge	46	Our Constituencies in 2016/2017
24	Master Degree Programmes	53	Graduating Classes

From the Chairman



As I look back over INSEAD's achievements in 2016/2017, there is much for us all to be proud of.

In fact we have broken so many of our own records, that it would be wrong for me to single any of them out for celebration. Instead I would like to highlight the real momentum we have built in engaging our entire community – not just every department in the school but also our alumni and supporters throughout the world – to join forces and take INSEAD to new heights.

At a strategic level too, there have been some fundamental advances. The signing of a new agreement and the opening of a new campus in Abu Dhabi is a historic step. And our second consecutive year at #1 in the *Financial Times* MBA rankings was another important milestone.

As far as governance is concerned, both the Board and the INSEAD Alumni Association have welcomed new

faces. We greatly appreciate the fresh perspectives and added diversity, in terms of both gender and origin, that they bring to our work.

Last but not least, it has given me great pleasure to see Ilian re-elected as Dean for another five-year term beginning in September 2018. So many of the successes in this report have been driven by his leadership – and his distinctive ability to enthuse and mobilise our community through his vision for the role of business in society. This vision, his new term and the new academic year are already heralding even greater achievements for INSEAD in the years to come.

Andreas Jacobs
Chairman

Board of Directors

Honorary Chairman

Claude Janssen

Chairman

Andreas Jacobs
Member of the Board,
Jacobs Holding AG

Vice-Chairman

Claude Rameau
Professor Emeritus, INSEAD;
Former Dean, INSEAD

Members

Jolyon Barker
Global Leader, Clients & Industries,
Deloitte MCS Limited

Rémy Best
President, Fondation Mondiale
INSEAD; Chairman, INSEAD
Campaign Board; Managing Partner,
Pictet & Cie

Karen Fawcett
CEO, Retail Banking for Standard
Chartered Bank

Deepak Gupta
Chairman, Nominations Committee,
INSEAD; Founder and Chairman,
Denita Group of Companies

François Hériard Dubreuil
President, Fondation INSEAD;
Chairman, Orpar; Chairman,
Rémy Cointreau

Emma Goltz

Chair, INSEAD Alumni Fund

André Hoffmann

Non-Executive Vice-President,
Roche Holdings Ltd; Non-Executive
Vice-President, Givaudan SA

Philippe Houzé

President, INSEAD France Council;
Executive Chairman, Galeries
Lafayette Group

Sadia Khan

President, INSEAD Alumni
Association; CEO, Selar Enterprises

Daniel Labrecque

Chairman, International Council,
INSEAD; Founder and CEO,
DNA Capital

Daniel Lalonde

President and CEO, SMCP

Christina Law

Group President, Asia and Latin
America, General Mills

Frédéric Lemoine

Former Chairman of the Executive
Board, Wendel Group

Leonidas Los

Shipbroker, Trimarine Shipping
Company

Michael Pragnell

Founder, CEO Syngenta AG

R. Todd Ruppert

Founder and CEO,
Ruppert International Inc

Mika Salmi

Chair, Remuneration Committee,
INSEAD; Board Director,
CreativeLIVE, Inc

Mirjam Staub-Bisang

Chair, Endowment Management
Committee, INSEAD; President,
INSEAD Switzerland Council;
CEO and Co- Founder, Independent
Capital Group AG

Gary Wang

Founder, Light Chaser Animation
Studio

Permanent Invitees

Ilian Mihov

Dean, INSEAD; Professor of
Economics, INSEAD; The Rausing
Chaired Professor of Economic and
Business Transformation, INSEAD

Laurence Capron,

Professor of Strategy, INSEAD;
The Paul Desmarais Chaired
Professor of Partnership and
Active Ownership, INSEAD

Charles Galunic

Professor of Organisational
Behaviour, INSEAD; The Aviva
Chaired Professor of Leadership
and Responsibility, INSEAD

Brigit Soccard

Executive Assistant to the Chief
Communications Officer and
Communications Department,
INSEAD



From the Dean

Reflecting on a momentous year for the school: record engagement in all areas, historic donor generosity, changes in leadership and curriculum, high-flying faculty and a renewed focus on gender equality.

Dear INSEAD community,

What a tremendous honour and privilege it is to be reappointed as Dean of INSEAD for a second term. I am humbled by the opportunity to continue to lead INSEAD, and immensely grateful for the support shown by the INSEAD community. This is an important moment in our school's history: We are exceeding expectations in almost every measurable way, and I am committed to keeping us on that trajectory as we begin this next chapter together.

Leadership changes

One of the ways we are positioning INSEAD for success is by restructuring parts of our leadership team. This was spurred, in part, by significant increases in alumni and donor engagement, along with greater activity on our website, social media channels and publications. To better leverage these opportunities, Peter Zemsky as Deputy Dean of INSEAD, will oversee the leadership teams for Advancement and Communications, while also continuing to lead our school's digital transformation as Dean of Innovation.

Record engagement and giving

Across the board, engagement with alumni, donors and supporters has skyrocketed. We're seeing record-breaking participation rates in our Executive Education programmes, a dramatic increase in enrolment in our Online Programmes and exceptionally high completion rates in online education – nearly the highest in the world. Similarly, our Executive Degree programmes are performing incredibly well, as we recruited 419 new participants in 2017. Traffic on INSEAD Knowledge, our thought leadership portal, was also the highest we have ever seen.

Taken together, this is bolstering the financial position of the school. In 2016/17, we broke another record by exceeding €100M in revenues in both our Master Degree Programmes and Executive Education programmes. Alumni giving also grew 41% and philanthropic contributions reached all-time highs. Today, the INSEAD endowment is at its highest level ever.

PETER ZEMSKY AT THE ALUMNI FORUM IN PARIS, 2017



Curricular innovations and academic excellence

We recognise that, in a rapidly transforming global marketplace, INSEAD must continually iterate and innovate its educational offerings. Our goal is to harness new technologies and new learning techniques to provide a superior educational experience. To that end, in September 2017, we unveiled a new curriculum for the MBA Programme. Students now have access to a personalised leadership development course; a range of topical courses on business and society; new electives on digital initiatives and ethics; and a capstone class that simulates a business crisis.

The impact of these curricular changes is amplified by our world-class faculty, who continue to excel as both teachers and researchers. In the past year, three faculty members were named to the Thinkers50 Ranking; three professors were among the Case Centre's top-ten bestselling authors for case writing; 14 scholars won awards for their papers; and dozens more received

other prestigious recognitions. For example, Professor of Marketing Pierre Chandon received the 'Outstanding Contribution to the Case Method' which is the highest accolade offered by the Case Centre. Professors Renée Mauborgne and W. Chan Kim published their highly anticipated *Blue Ocean Shift: Beyond Competing*, while also appearing on *Forbes'* list of the World's Most Influential Thinkers 2017.

In the past year, we've recruited 11 outstanding faculty from six countries and now have six new postdoctoral researchers. These accomplished scholars represent an extraordinary range of disciplines, backgrounds and expertise areas, and they are poised to add to the richness and diversity of our school.

Advocating for women leaders and gender balance

In today's business world, women are severely underutilised – which also means that business outcomes and social outcomes are falling short of their potential. Indeed, research indicates that



engaging female talent leads to better business performance, and increasing the number of women in the workplace drives economic development.

In the past year, INSEAD has renewed its focus on gender balance. Our long-term initiative, the Gender Initiative, is dedicated to integrating research, business and pedagogy to engage the full potential of men and women. And our year-long celebration, iW50, is marking the 50th anniversary of women at INSEAD with a series of events that take a hard look at gender issues and recognise the past, present and future of women at our school.

There is no silver bullet for achieving gender balance. However, at INSEAD, we've found some success in using data to support discussions about gender issues, engaging men and women in gender diversity efforts, and having an open mind to innovation. Based on research by two of our professors – Lucia Del Carpio and Maria Guadalupe – we know that female role models play an important part in the advancement of women, so we are working to create more of those role models. I am pleased to report that we enrolled the

highest-ever percentage of female students (36%) in our MBA Programme this year, and that gender diversity on our leadership team has also increased. But there is still much work we must do.

My thanks to you

At the end of the day, these achievements belong to you – our faculty, students, alumni, donors, supporters and staff. They are the result of your hard work, incredible talent, deep collaboration and commitment to our mission. Thank you for all that you do.

As you read this Annual Report, be proud. You made this success story happen.

With sincere thanks for your continued support,

Ilian Mihov
Dean

Faculty and Research

At INSEAD our faculty are our engine of excellence. Their groundbreaking insights and classroom expertise stand at the heart of our twin mission to excel in both research and teaching.

With international backgrounds and diverse outlooks, our faculty nurture a global perspective and richness of debate that no other school can match. Ultimately, our faculty are how we make an impact on the rapidly evolving world of business.

INSEAD's continued growth and high rankings are possible only thanks to our professors and the discoveries they make. Research output and PhD-programme performance were both key criteria in maintaining our #1 position in the *Financial Times* global MBA ranking for a second consecutive year in 2017. And in the influential UTD Top 100 Business School Research Rankings, produced by the University of Texas to track publication in prominent journals, we remained the leading business school outside the United States.

Faculty recruitment

After a major recruitment push throughout the academic year, we were delighted to welcome 11 outstanding new resident faculty members (pages 16-19) in September 2017. We also have six new postdoctoral researchers, an expanding community that reflects our commitment to

scholarship in the field of business management. Our challenge now is to continue growing both our faculty body and research output, without compromising the quality for which we have become known.

Reflecting the importance of this strategic goal, the decision was taken in 2016/2017 to appoint a second dean responsible for this area. As of September 2017, Timothy Van Zandt remains Dean of Faculty, while Ziv Carmon, INSEAD Chaired Professor of Marketing in Memory of Erin Anderson, joins him on the Executive Committee as Dean of Research.

Worldwide recognition

Two other highlights of the year were the publication of *Blue Ocean Shift: Beyond Competing*, the long-awaited follow-up to *Blue Ocean Strategy* by Professors Renée Mauborgne and W. Chan Kim, and the award of the Case Centre's highest accolade to Professor of Marketing, Pierre Chandon for his 'Outstanding Contribution to the Case Method'. However, the list of faculty awards provides many more causes for celebration.



TIMOTHY VAN ZANDT, DEAN OF FACULTY

True to our guiding principle of maximising diversity throughout the school, our faculty come from every corner of the world to influence and inspire – in and out of the classroom.

ZIV CARMON, DEAN OF RESEARCH



We currently have

149

faculty representing

41

nationalities.

This year, they published

10

books and wrote

100

journal articles,

79

working papers,

90

case studies and

28

chapters in

23

publications.

ZOE KINIAS, ACADEMIC DIRECTOR OF GENDER INITIATIVE



MARK STABILE, ACADEMIC DIRECTOR OF THE STONE CENTRE FOR THE STUDY OF WEALTH INEQUALITY



Centres of Excellence

We now have 20 dynamic Centres of Excellence, which build bridges between research and practice, as well as between disciplines. Here, faculty from different academic areas, practitioners, professional researchers, visiting scholars and other experts collaborate to generate insights with true global impact.

Two new Centres were created this year. The INSEAD Gender Initiative builds on INSEAD's core institutional value of diversity and decades of efforts to empower women. At INSEAD, we have long recognised that gender imbalance has significant consequences for both business and society. By seeking to understand its dynamics, causes and consequences, we hope to engage the full potential and contribution of both women and men in organisations across the world. Associate Professor of Organisational Behaviour Zoe Kinias will lead these efforts as Academic Director of Gender Initiative.

The James M. and Cathleen D. Stone Centre for the Study of Wealth Inequality was established in recognition of a generous gift to the school. Led by Mark Stabile, INSEAD Professor of Economics and the Stone Chaired Professor of Wealth Inequality, the Centre was launched to focus on a phenomenon that the World Economic Forum has identified as a major global risk.

By convening an international, interdisciplinary team of scholars from across and beyond the school, the Centre will take a novel approach to examining the impact of the 'top one percent' around the world. The findings will feed directly into new courses at INSEAD – a significant step in helping to change the way future business leaders address one of the most significant issues of our time.



Blue Ocean Strategy Institute

The Rudolf and Valeria Maag Centre for Entrepreneurship

Centre for Economic Growth

Corporate Governance Centre

Decision Making and Risk Analysis

Emerging Markets Institute

eLab

European Competitiveness

Gender Initiative

Global Private Equity Initiative

Global Leadership

Healthcare Management

Initiative for Learning Innovation and Teaching Excellence

INSEAD-Wharton Center for Global Research and Education

INSEAD-Sorbonne University Behavioural Lab

James M. and Cathleen D. Stone Centre for the Study of Wealth Inequality

Randomised Controlled Trials Lab

Social Impact Initiative

Social Innovation Centre

Wendel International Centre for Family Enterprise

Faculty Recognition and Awards

Recognition

Finalist, 2017 William H. Newman Award
Academy of Management
Sunkee Lee

Conflict Management Division's New Directions Award 2017
Academy of Management
Eric Anicich, Frederic Godart, Roderick Swaab, Adam Galinsky

2017 MSI Young Scholar
Marketing Science Institute
David Dubois

#4, Thinkers50 Ranking 2017
Thinkers50
W. Chan Kim and Renée Mauborgne

#39, Thinkers50 Ranking 2017
Thinkers50
Erin Meyer

#47, Thinkers50 Ranking 2017
Thinkers50
Gianpiero Petriglieri

Thinkers50 Radar 2017
Thinkers50
Noah Askin

Thinkers50 Radar 2017
Thinkers50
Nils Rudi

World's Most Influential Thinkers 2017
Forbes
W. Chan Kim and Renée Mauborgne

HR Most Influential Thinkers 2016
HR Magazine
Erin Meyer

Service Awards

2017 Sumantra Ghoshal Award for Rigour and Relevance in the Study of Management
London Business School
Laurence Capron

Awards

Best Student Paper Award 2017
Decision Analysis Society
Bhavani Shanker Uppari, Sameer Hasija

Finalist, 2017 Organisation and Management Theory Best Entrepreneurship Paper
Academy of Management Meeting
Balagopal Vissa, Kim Claes

Best Conference Paper Prize, 2016
SMS Special Conference
Yidi Guo, Xiaowei Rose Luo

Annual Meeting Best Paper, 2016
Academy of Management
Nathan Furr

Best Conference Paper, 2016
Strategic Management Society
Ilze Kivleniece

Runner-up, ENRE Best Student Paper Award 2016
INFORMS
Bhavani Shanker Uppari, Ioana Popescu, Serguei Netessine

Finalist, DAS Student Paper Award 2016
Decision Analysis Society
Sasa Zorc, Ilia Tsetlin

Outstanding Article Award 2017
International Association for Conflict Management
Michael Schaerer, Roderick Swaab, Adam Galinsky

Runner-up, 2017 Business Ethics Quarterly Best Article
Business Ethics Quarterly
Leena Lankoski, N. Craig Smith, Luk Van Wassenhove

Finalist, 2016 Dissertation Proposal
INFORMS
David Clough

Third Runner-up, 2016 Best Student Paper Award Competition
INFORMS
Ashish Kabra

Finalist, Best Dissertation Award
INFORMS
Haibo Liu

Best Poster Award for PhD Students and Young Scholars
INSEAD-ILO Evidence Symposium
Ari Adbi, Matthew Lee, Jasjit Singh

GIANPIERO PETRIGLIERI, #47 THINKERS50 RANKING 2017



ERIN MEYER, #39 THINKERS50 RANKING 2017 AND HR MAGAZINE'S MOST INFLUENTIAL THINKER



LAURENCE CAPRON, RECIPIENT, 2017 SUMANTRA GHOSHAL AWARD FOR RIGOUR AND RELEVANCE IN THE STUDY OF MANAGEMENT



Celebrating INSEAD Case Studies

At INSEAD, we not only utilise case studies in our teaching but our professors and writers are also world leaders in this form of research output.

Case Centre recognition

Last year, as usual, we were prolific publishers and prize winners, with three professors in the Case Centre's 2017 top ten bestselling authors.

Professors Renée Mauborgne and W. Chan Kim placed at #8. Their latest case study, *A Maestro Without Borders: How André Rieu Created the Classical Music Market for the Masses* (2017), takes us into unusual territory for business research. It shows how one orchestra has succeeded in competing with the likes of Bruce Springsteen and Justin Bieber in terms of sales figures.

Just behind, at #10, is Pierre Chandon (who won the Case Centre's 2016 award for Outstanding Contribution to the Case Method). His latest offering is also highly innovative and particularly relevant to this Annual Report. *Who's #1: INSEAD, Harvard, Wharton, LBS? Designing Research to Measure the Strength of Business Schools' Brands* (2017) asks students to identify the most important attributes of an MBA programme and design a survey accordingly.

The other standout result this year was the award of the Case Centre's Human Resources Management/Organisational Behaviour prize to Professor Horacio Falcão, for *Oxipouco: An Endangered Species Resource Negotiation* (2013). It's a dynamic role-play based on a real-life negotiation between two pharma companies: Will you collaborate or will you compete... and risk losing a potential cure for leukaemia and Alzheimer's disease?

Business learning

Case studies are much more than classroom aids. They tell great stories, casting light on the most topical business issues for the general reader. The accompanying teaching notes reveal even deeper learning about business successes (and sometimes failures). For members of the INSEAD community, collaborating with faculty on a bestselling case study is an opportunity to give back to the school. And for our professors, case writing brings them even closer to business. Perhaps most important of all, INSEAD case studies take our brand out into the world – and even into the classrooms of our competitors.



PIERRE CHANDON, WINNER OF THE CASE CENTRE'S 2016 AWARD FOR OUTSTANDING CONTRIBUTION TO THE CASE METHOD



Case writing awards

Winner, 2017 Case Centre Awards, *Human Resources Management/Organisational Behaviour Category*

The Case Centre
Horacio Falcão

Winner, 2017 Case Centre Awards, *Marketing Category*

The Case Centre
David Dubois and Katrina Bens

Second Prize in Corporate Sustainability
oikos Case Writing Competition 2017

Craig Smith and Erin McCormick

Finalist, *Prix du meilleur cas AFM-CCMP*

Association Française du Marketing
David Dubois, Inyoung Chae, Joerg Niessing and Jean Wee

New Faculty

In 2016/2017, we recruited 11 new faculty representing six nationalities and an extraordinary range of disciplines and experiences. They are now installed across our campuses.

Hami Amiraslani

UK

Assistant Professor of Accounting and Control
Europe Campus

Before completing his PhD at the London School of Economics, Hami worked as a consultant in the area of syndicated loans and project finance. His research analyses how corporate governance reforms, capital market regulation and corporate law affect financial contracting and account choice.



Elizabeth Baily Wolf

UK and USA

Assistant Professor of Organisational Behaviour
Europe Campus

Elizabeth's research focuses on how emotion, non-verbal behaviour, gender and national culture affect the way people assess their own and others' performance. She aims to make organisations more effective through more accurate evaluation, which was the inspiration for her PhD at Harvard Business School.



John Fernald

USA

Professor of Economics and Political Science
Europe Campus

John, who joins us from the Federal Reserve Bank of San Francisco, has a PhD in macroeconomics from Harvard University. *The Economist* has described him as "the foremost authority on American productivity figures" and *The Wall Street Journal* as "the Fed's point man on productivity".

Guillaume Roels

Belgium

Associate Professor of Technology and Operations Management
Europe Campus

Previously teaching at UCLA, Guillaume earned his PhD from MIT. He has won numerous teaching and research awards, and in 2015 was named one of the *Poets & Quants* 'Best 40 Business School Professors under 40'. His research is about traffic flow modelling and contracting for collaborative services.



Ko Kuwabara

Japan

Associate Professor of Organisational Behaviour
Asia Campus

Ko joins us from Columbia Business School. He gained his PhD from Cornell University. His research investigates the motivational psychology of networking and has also explored the question of trust in cross-cultural interactions and online markets.



Melanie Milovac

Germany

Assistant Professor of Entrepreneurship and Family Enterprise
Asia Campus

Melanie gained a PhD from the University of Cambridge. Her research deals with the psychological aspects of entrepreneurship. One of her recent projects explored how entrepreneurs' moods influence the success of their pitches – insights that she is passing on through the New Business Ventures MBA course.

Alexandra Roulet

France

Assistant Professor of Economics and Political Science
Europe Campus

A labour-market and public-service economist, Alexandra had already co-authored a book – *Repenser l'Etat* – about rethinking the French state before doing her PhD at Harvard. She researches the effect of job loss and unemployment on health, and is working on a number of hands-on projects with French government agencies.



Daniel Walters

USA

Assistant Professor of Marketing
Europe Campus

Daniel gained his PhD and MBA from the UCLA Anderson School of Management, before which he worked in investment banking and oversaw a portfolio of \$200 million. Today, his highly applied research is concerned with decision-making – and particularly with how a lack of information can lead to overconfidence.



Daniel Simonovich

Germany

Affiliate Professor of Strategy
Europe Campus

Daniel was one of Germany's youngest ever deans at ESB Business School, but he had an illustrious career even before that, at Booz & Company and an MIT spinoff. He has a PhD from EBS University and an MBA from INSEAD, and his current research interests lie in strategy execution.

Michael Freeman

UK

Assistant Professor of Technology and Operations Management
Asia Campus

Michael's research focuses on healthcare management and hospital operations, applying advanced empirical methods and machine learning to ensure effective – and cost-effective treatment for patients. He gained his PhD from the Judge Business School, Cambridge, and holds an honorary appointment with Cambridge University Hospitals.



Spencer Harrison

USA

Associate Professor of Organisational Behaviour
Europe Campus

Spencer researches the management of creativity; collaboration in business (and beyond); and emotional connection with organisations. He has conducted projects with Google, NASA and Black Diamond, and is currently studying Grammy-winning bands, dancers and T-shirt designers. He has a PhD from Arizona State University.



- Main Reception
- Interview Rooms M81 to M86
- Foot-Note Restaurant
- Restaurant & Bar
- Mickey & Company Lifestyle Centre (Fitness)
- Residence Ermitage

Doctoral Programme

INSEAD's highly selective PhD programme remains one of the world's best in terms of student intake, research output and the quality of schools where our graduates are ultimately placed.

Indeed, our eleven graduates in 2016/2017 not only brought our total number of alumni to just under 200 but also went on to join truly top universities, including Columbia, Carnegie Mellon and Tsinghua. There, they will continue to fly the flag for INSEAD's unique global approach to business research and boost our reputation throughout the world.

Our diverse community

In June 2016, we welcomed over 60 of the 198 alumni back to the Europe Campus for a one-day celebration and conference. They came together from all corners of the globe to discuss the triumphs and challenges of transitioning from PhD student to fully-fledged professor with current students and faculty.

Achieving gender balance

Another cause for celebration is our 50% female intake in September 2016 and continued strong recruitment of women for September 2017. As well as affirming INSEAD's commitment to gender equality and adding to diversity on campus, this marks our contribution to increasing the proportion of women in the profession of business academia.

One further highlight of the year is the launch of our new online brochure, which brings this outstanding programme to life through videos, images and stories.

For 2016/2017:

82
students

28
nationalities

45%
women

198
alumni

43
countries

INSEAD Knowledge

Online platform, INSEAD Knowledge showcases the latest business thinking and opinion from our award-winning faculty and global contributors to a growing global public audience.

In 2016/2017, *Knowledge* continued to expand its readership and its reach across the school and beyond. This year saw a 20% increase in overall traffic compared to last year. More specifically, our social media channels continue to attract new followers (up 15% on last year), who then click through to *Knowledge*. (We now have 235,000 social media clickthroughs to the *Knowledge* website annually.) We reach many additional readers through our syndication to media partners worldwide.

New channels and outreach

Also this year, *Knowledge* added several new channels to its suite of offerings. In addition to our smartphone and tablet app, the team launched specialist newsletters for participants in online programmes. Every three months, more than 15,000 members of INSEAD's National Alumni Associations now receive content that is not available anywhere else through the *INSEAD Knowledge Alumni Exclusive Quarterly*.

INSEAD Knowledge Arabia was redesigned in 2016/2017 to harmonise the site with the English edition. It now provides even more effective outreach and brand-awareness for INSEAD in the Middle East, as well as influencing business practice throughout the region.



CHRIS HOWELLS, EDITOR OF INSEAD KNOWLEDGE

The best of Knowledge 2017

This year, we saw a thirst for new ideas on digitisation, the ever-present interest in stories of corporate decline, and how best to navigate leadership and innovate. INSEAD was also at the forefront of breakthrough research on how women and men are judged differently at work and what managers can do about it.

The editor's pick: Chris Howells' top five articles of 2017

11 Leadership Guidelines for the Digital Age

Liri Andersson, INSEAD Guest Lecturer, founder of this fluid world, and Ludo Van der Heyden, Chaired Professor of Corporate Governance & Professor of Technology and Operations Management at INSEAD

The old ways of running a company won't cut it in a digital world.

The Strategic Decisions That Caused Nokia's Failure

Yves Doz, INSEAD Emeritus Professor of Strategic Management

The moves that led to Nokia's decline paint a cautionary tale for successful firms.

The Three Altitudes of Leadership

Ian C. Woodward, INSEAD Professor of Management Practice

Leaders must cultivate the seamless ability to mix forward-vision thinking, tactical execution and self-awareness – across the altitudes of leadership.

The World's Most Innovative Countries 2017

Bruno Lanvin, Executive Director for Global Indices at INSEAD and co-editor of the Global Innovation Index report

Innovation in agriculture is vital. One key to feeding the world is releasing pressure on the use of scarce natural resources through innovation.

Why "Believe in Yourself" is Bad Advice for Women

Natalia Karelaia, INSEAD Associate Professor of Decision Sciences

In the workplace, women can capitalise on self-confidence only when they exhibit 'feminine' behaviours as well.

INSEAD Knowledge

100,000

unique monthly website visitors

3m

page views annually

80,000

followers across social media (Twitter, Facebook)

106,000

Knowledge app downloads since its launch in 2015

Knowledge content is divided between nine topic areas:



Leadership & Organisations



Career



Economics & Finance



Strategy



Responsibility



Marketing



Operations



Entrepreneurship



Family Business

Master Degree Programmes

2016/2017 was another great year for INSEAD Degree Programmes, with our second #1 global MBA ranking from the *Financial Times* and revenues exceeding €100 million for the first time in the school's history.

MBA programme

Although we paused briefly to celebrate our second time at the top of the *FT* rankings in January, much of the academic year was taken up with preparations for the launch of the new MBA curriculum in September 2017. In fact, the students recruited as 'curriculum pioneers' to the MBA Class of 2018J turned out to have the highest GMAT scores in INSEAD's history. Along with the previous intake (MBA'17D), they also have the highest ever percentage of women, including our first female students from the Democratic Republic of the Congo and Madagascar.

However, as we enter our 50th anniversary year of accepting female students at INSEAD, we realise we have more to do and hope that the 'iW50' celebrations will result in even more women joining future MBA classes. Rollout of the new curriculum continues, with the online 'P0' (Period 0) due to supplement the already-introduced new content and leadership coaching.

In July 2017, we held our second grand summer graduation ceremony at the Château de Fontainebleau. It was every bit as successful as the first, especially the

live streaming. Equally impressive was the December 2016 graduation ceremony, held in the iconic Marina Bay Sands in Singapore. Our largest ever graduation in Asia was made even more moving by a procession of alumni from the pioneer Singapore MBA class of December 2000.

Executive degree programmes

The Global Executive MBA (GEMBA) continues to grow in popularity with every year. In 2016/2017, we enhanced the well-known Leadership Development Programme (LDP), a feature shared with the Tsinghua-INSEAD MBA (TIEMBA). The two programmes, which come together for elective sessions in Fontainebleau every summer, also had their first joint graduation ceremony, at the National University of Singapore in December 2016. Just two months earlier, INSEAD was the only business school in the world to have two Executive MBA programmes ranked in the *Financial Times'* global top five.

We are particularly pleased that applications to TIEMBA remained buoyant in 2016/2017, despite the introduction of stringent new admission requirements

2017 was a memorable year for INSEAD in the international rankings. We topped some of the most prestigious tables, including:

#1

MBA Programme in the World
(for the second year in a row)
Financial Times

#1

Best International MBA
Bloomberg Businessweek

#1

MBA Programme in Europe by
Number of Founders Produced
Pitchbook

#2

Highest Return on Investment of any
MBA Programme in the World
Forbes Magazine



by the Chinese government. Similarly, applications for the Executive Master in Finance exceeded our expectations. This unique post-experience, two-campus, modular programme for working finance professionals originally grew out of a collaboration with Macquarie Bank. Following a relaunch and rebranding in 2016/2017, it is taking off in terms of popularity and recognition throughout the finance industry.

Meanwhile the Executive Master in Consulting and Coaching for Change (EMCCC) continues to go from strength to strength. Its distinctive application of psychodynamic methods to business practice strikes a chord with a wide range of talented participants from all ages and backgrounds.

Department restructuring

To build on our position of strength and respond to an increasingly competitive global market, the management of Degree Programmes has been reorganised. In addition to two programme-specific teams for MBA and Executive Degrees, we now have a single cross-programme, global marketing team with specialist expertise in this increasingly technical function, and a world class multi-campus Career Development Centre (see page 28). The new marketing structure is designed to respond more effectively to the needs of potential applicants.

Class Statistics

	MBA'17D and '18J			
MBA	1,033	29	36%	709
Designed for early- to mid-career professionals, and featuring an accelerated 10-month curriculum, our MBA programme develops successful leaders and entrepreneurs.	Participants	Average age	Women	Average GMAT score
	96	6		
	Nationalities	Average years of work experience		
	GEMBA'18			
Global Executive MBA	235	38	25%	
Our Global Executive MBA programme is tailored for experienced professionals who wish to develop their leadership skills while they continue to advance their current careers.	Participants	Average age	Women	
	59	13		
	Nationalities	Average years of work experience		
	TIEMBA'19			
Tsinghua-INSEAD Executive MBA	38	36	26%	
This dual degree combines INSEAD's global perspective and Tsinghua University's in-depth expertise of business in China to produce highly successful business leaders and entrepreneurs.	Participants	Average age	Women	
	20	12		
	Nationalities	Average years of work experience		
	EMCCC'17			
Executive Master in Consulting and Coaching for Change	108	44	47%	
The INSEAD Executive Master in Consulting and Coaching for Change takes participants deep into the basic drivers of human behaviour and the hidden dynamics of organisations.	Participants	Average age	Women	
	36	19		
	Nationalities	Average years of work experience		
	MFin'18D			
Master in Finance	38	31	34%	
Blending cutting-edge theory and best practice, the programme is for professionals with work experience in finance-related roles.	Participants	Average age	Women	
	16	7		
	Nationalities	Average years of work experience		



Career Development Centre

With its new leadership and expanded staff, the Career Development Centre has achieved a great deal in a very short time.

Our cross-programme, global team in the Career Development Centre saw a change of leadership in 2016/2017. Katy Montgomery – previously Associate Dean at Carey Business School, Johns Hopkins University – assumed responsibility for developing and rolling out the Careers Core of the new MBA curriculum.

Parts of the new Careers Core curriculum were delivered to the September 2017 MBA intake even before they arrived on campus – in the form of digital start webinars – and continues to be taught face-to-face by Katy and her team. The expanded specialist careers team includes individual career coaches for every student. This new curriculum marks the first time that careers has truly been integrated into the programme at INSEAD.

Recruitment

The larger team has reinvigorated support for Executive Degree Programme participants and revamped online resources for all. We are confident that the results will be visible in the form of more recruiting partners, more global destinations for our graduates and even more recruitment from top employers. Already in 2016/2017, we were pleased to note improved penetration of the US market, which has traditionally been less fertile ground for our students' job-hunting than Europe, Asia and the Middle East.



Other trends of note among the MBA'16D and '17J graduates include the continued enthusiasm for everything digital. The Technology, Media and Telecommunications sector represents a major destination for our graduates: we are seeing Fintech emerge as a major source of jobs within the industry.

In addition, more and more start-ups and mid-size companies are participating in recruitment at INSEAD and a growing number of MBAs are moving into companies that embody the INSEAD value of business as a force for good.



In the past year, we have hosted

310

recruiters across INSEAD's three campuses. In addition, we arranged for off-campus company interactions through treks and company visits with

202

companies.



World of Talent

Our global team at the Career Development Centre offers students comprehensive support for their career journey. The 36 full time staff located across INSEAD's three campuses include personal career coaches, employer engagement specialists and operations team members who organise 80 workshops and nearly 4,000 on-campus interviews throughout the year.

MBA'16D and '17J in numbers

90%

Employed within 3 months, and working in

64

countries, with an average base salary of

€94,700

Our unrivalled network

We now have more than

54,800

alumni in

170

countries.

CDC has strong employer relations with

600

companies.

Employers of MBA'16D and MBA'17J graduates



Employment transformations

54% changed sector

62% changed functions

53% changed country

29% changed all three dimensions

79% changed at least one dimension

Employment sectors

49% Consulting

20% Tech/Media/Telecomms

12% Financial Services

19% Other corporate sectors

Executive Education

This year was outstanding for Executive Education. Despite a challenging and increasingly competitive market, we achieved revenues of over €100 million for the first time in INSEAD's history, representing an unprecedented annual growth of 13.9%.

Much of this success can be attributed to our responsiveness to the needs of the market. In 2016/2017, we delivered programmes that provided transformative learning and drew on research that was not only excellent academically but was also highly relevant to business.

In addition, we built on the previous year's achievements by creating online and hybrid programmes that cascade throughout organisations with extraordinary speed and scale. In short, we have created a very strong digital niche for INSEAD Executive Education.

Open programmes

Our performance this year was robust across our entire portfolio, but we experienced particularly high levels of interest in our new Digital Transformation and Innovation family of programmes, including two delivered entirely online. There was also strong demand for our flagship General Management Programmes and our wide offering of Leadership courses.

In partnership with the INSEAD Corporate Governance Centre, we have established the school as a world leader in Director Education. Our flagship International Directors Programme, delivering to five cohorts each year, continues to go from strength to strength.

In 2016/2017, we successfully launched three fully online programmes: Strategy in the Age of Disruption, Driving Value Through Business Acumen, and Emerging Leaders in a Digital Age. These programmes enabled over 700 participants to have the INSEAD experience around the world.

We also launched two new face-to-face programmes: Innovation by Design, and Leading Digital Marketing Strategy.

Customised programmes

This year also was exceptional for Customised Programmes, particularly in Asia Pacific, thanks to the talent and dedication of the Singapore sales team and our faculty.

Japan and Malaysia were our strongest markets, but our portfolio of North American clients continued to develop, while Europe and the Middle East remained relatively stable, compared to earlier years.

In March 2017, we welcomed 40 C-Suite and senior learning and development executives from around the globe to Fontainebleau for a two-day summit on digital transformation and online learning. The event deepened relationships and triggered new business opportunities.

We have been at the vanguard of Executive Education for 50 years and are continually looking to develop our offering to stay ahead of the game.



This year saw us welcome over

10,000

participants from more than

2,000

companies. Over

120

nationalities attended a programme this year.

Our faculty now number

149

and they led over

40

open programmes on our

3

campuses.



PROFESSOR NATHAN FURR RECORDING AN ONLINE PROGRAMME IN STUDIO

Online activities

Building on the remarkable momentum of the previous year, our online offering once again almost doubled in terms of revenue, margin and total number of participants in 2016/2017. New Customised Online Programmes, the launching of new Open Online Programmes, and strong performance of existing offerings all fuelled the sustained growth trajectory.

New clients included Schneider Electric, who decided to undertake their digital journey with our school through a hybrid programme. This offering was delivered in person and/or online to three levels of leaders in the company, reaching more than 500 participants in more than 55 countries – with typically high completion and satisfaction rates.

In addition, we piloted a new course with alumni this year: Innovation in the Age of Disruption. Many members of the INSEAD community came together to build success in this digital learning venture, that included new features such as specialist online learning coaches and action learning projects.

We also are pursuing an internal collaboration with our MBA colleagues by developing a pre-programme, online 'P0' module for the incoming MBA Class of December 2018. Our work with alumni will continue in the coming year as we pioneer online programmes in traditionally 'high-touch' areas, such as leadership and creativity. These collaborations demonstrate all that we can achieve when working together as a global community.

Award-winning impact

Adding to the previous year's ten awards for our partnerships with Microsoft and Accenture, this year we have won four new medals for our work with Telenor: one gold from the European Foundation for Management Development; one gold from *Chief Learning Officer* magazine; and two silvers from Brandon Hall Group for Human Capital Management Excellence.

Microsoft, Accenture and Telenor decided to continue their partnerships with INSEAD, enabling us to see the transformative impact of our online programmes in action. Microsoft has in fact added a new INSEAD programme on Value Negotiations.

Since 1967, more than

172,000

participants have attended an INSEAD Executive Education programme and over

2,000

organisations partner with us every year.

This year, we developed customised programmes for

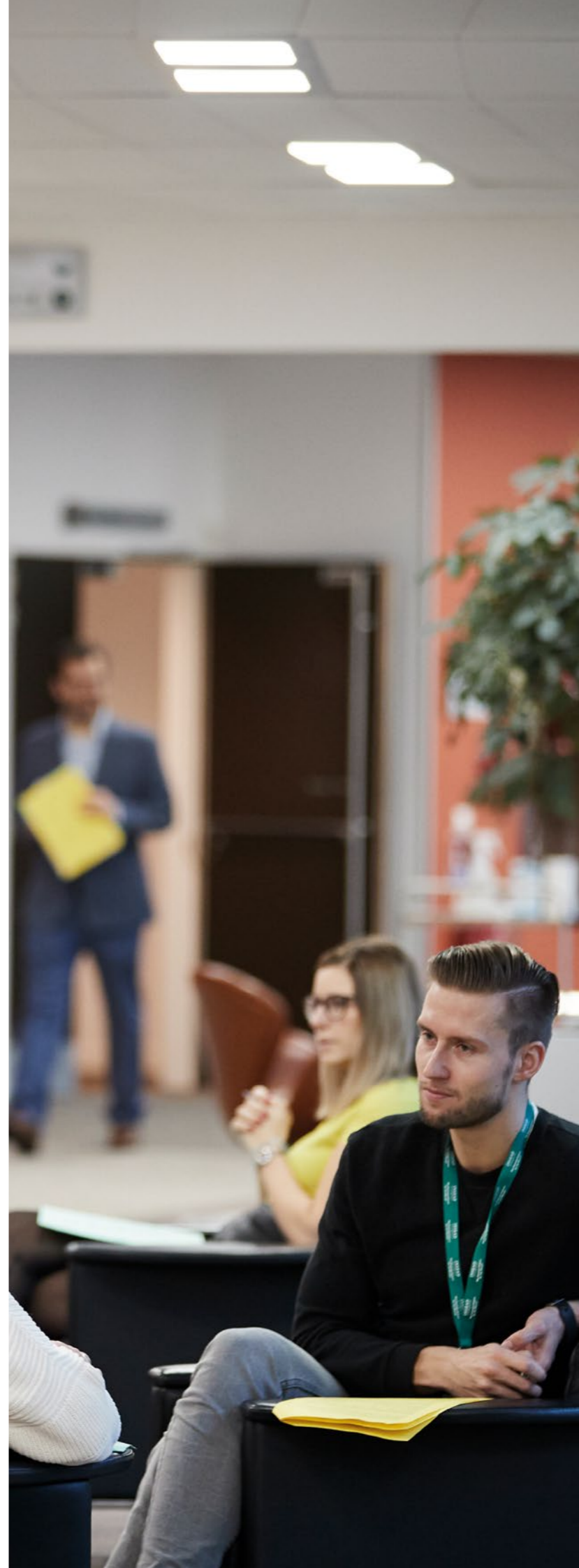
90

new clients globally.

Since 2014, we have educated over

18,000

online participants.



Advancement

Philanthropy is increasingly important to INSEAD's success. And our alumni and friends are generously responding to this priority.

As a leading business school, INSEAD is continually investing in research, teaching innovation and scholarships to attract the best talent from around the world. The strong support from our alumni and friends, and from corporations, is enabling us to make strategic investments that are key to advancing our mission.

An engaged donor community

Collective commitments in 2016/2017 reached a record €33.6 million, elevating INSEAD's ability to respond to new opportunities.

It was a year of leadership giving by our alumni, marked by the school's first eight-figure gift from an alumnus, as well as other significant investments. Equally, the number of alumni donors rose by 300 over last year, continuing the trend of increasing alumni support. Not to be outdone, more than 70% of students from the classes of MBA'17J and MBA'17D gave to the Robin Hood campaign, a tradition of fundraising led and managed by students. And corporations, many of whom are close partners of the school, renewed their support of scholarships and programmes.

Impact highlights

It was an outstanding year of support to our faculty and research. Gifts to these areas amounted to €20.8 million of which €12.5 million was directed to Entrepreneurship. Among the highlights were the establishments of The Rudolf and Valeria Maag Chair in Entrepreneurship, The Rudolf and Valeria Maag Professor in Entrepreneurship, The Sauvage Family Endowed Chair for Academic Excellence, and The James M. and Cathleen D. Stone Centre for the Study of Wealth Inequality (see page 10).

Gifts and pledges to scholarships surpassed €7.3 million. These helped to significantly expand opportunities for top candidates and strengthen the diversity that makes INSEAD programmes unique. The scholarships boosted representation of women in our MBA classes as well as that of students from Africa, the Americas, Asia, Europe and the Middle East.

Leadership gifts led to the establishment of several named scholarships including the Henriette and Norbert Albin Endowed MBA Scholarship, the Dr. Samith Darwazah Endowed Scholarship, the Christoph Rubeli MBA'92D Endowed Scholarship, the Michael and Susan Pragnell Endowed Scholarship, the Wolfgang Schaefer Scholarship, the Piet and Wina Van Waeyenberge Endowed Scholarship and the Pot Family Foundation Scholarship.

Some classes chose to honour their classmates through establishing INSEAD scholarships in their names. Alumni also gathered around special scholarship projects. A key success was the establishment of the endowed merit-based scholarships for Swiss MBA candidates.

More and more donors are supporting Dean Ilian Mihov's vision for INSEAD through unrestricted gifts to the Dean's Annual Fund. The number of donors to this fund grew by 60% over the previous year. The Fund supports a wide range of initiatives from curriculum review to seed funding for new research projects. As an example, the Fund enabled three MBA'17D students to participate in the 2017 MBA Impact Investing Network & Training competition at Wharton School. Competing against 25 teams from the world's best business schools, the INSEAD team took home the top prize for their solution to improve medical education in India.

Giving in 2016/2017

€33.6m

raised in gifts and pledges, representing a

41%

increase in giving results over the last year. More than

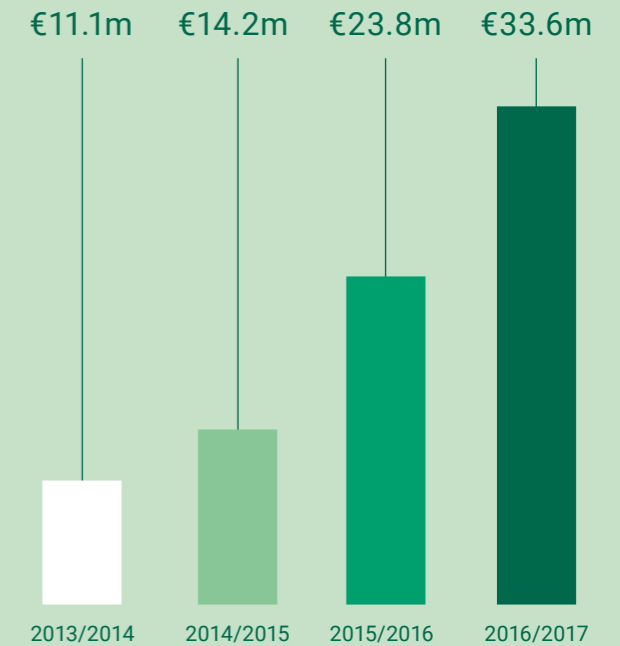
3,768

donors contributed to this achievement, and

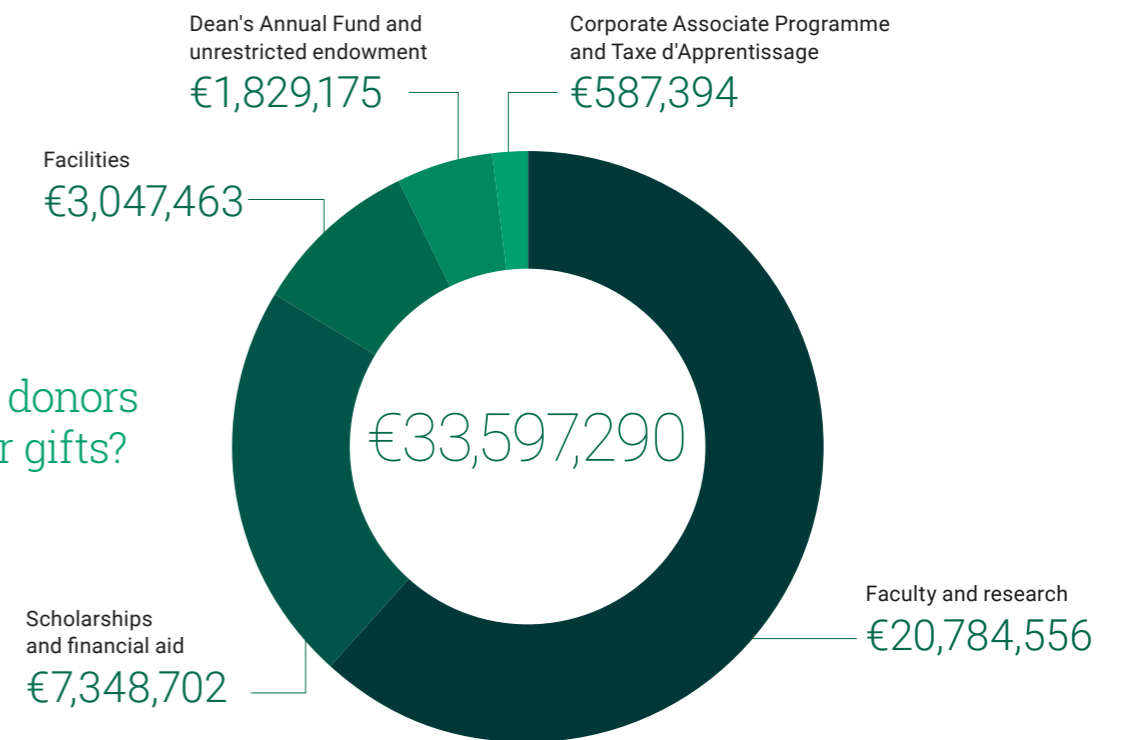
1,058

donors gave to the Dean's Annual Fund.

Increasing trust and commitment from our community (annual donations in € millions)



Where did donors direct their gifts?





New giving initiatives

The Salamander Challenge that began in January 2017 culminated in the inaugural INSEAD Giving Day on 21 February. Widely featured on social media, the Salamander Challenge was represented by mascots or 'global ambassadors' who travelled the world, advocating our shared beliefs in diversity and tolerance. This initiative was a truly global collaboration between the INSEAD Alumni Association, the INSEAD Alumni Fund and the school. It raised gifts from over 700 donors across 56 countries, building fundraising momentum and raising awareness about the importance of investing in INSEAD.

A second new initiative, the Tomorrow's Leaders Programme has been introduced to engage younger alumni with the school. Alumni who graduated up to 15 years ago now have the opportunity to name scholarships at attractive gift levels.

Connecting the community

We continue to create new lifelong learning opportunities for alumni, ranging from online programmes to career-focused webinars tailored to executives. A large number of alumni participated in these opportunities and benefited from the exclusive discounts offered to IAA and NAA members.

As part of our ongoing efforts to drive engagement and promote INSEAD alumni on social media, we launched the INSEAD Alumni Facebook page and an 'alumni business' page on the INSEAD website. By the end of 2017, more than 120 alumni had listed their products and services, demonstrating the breadth and depth of entrepreneurship in the INSEAD network.

The highly successful Summer@INSEAD programme, introduced in 2015, continues to engage alumni and their families. This year, INSEAD welcomed 80 talented

teenagers primarily children of alumni, to Fontainebleau for two weeks of intensive business education, team-building and careers coaching. These bright students impressed our faculty with their ability to keep pace with challenging courses.

Alumni events and awards

The single largest annual gathering of INSEAD alumni is Global INSEAD Day, which took place for the fifth time in September 2017 in 59 cities. This year's events honoured the 50th anniversary of women joining our MBA programme, which will be celebrated throughout the course of the coming year.

In partnership with the INSEAD Alumni Association, INSEAD has launched a new initiative to expand recognition of alumni achievements through the creation of a series of awards. Robert Keane MBA'94D, Founder and CEO of Cimpress, was the inaugural recipient of the Alumni Global Entrepreneurship Award. Other awards include the Alumni Force for Good Award and Alumni Volunteer Leader Award.

In 2016/2017, our Alumni Forums took place in Singapore, Montreal and Paris. The Singapore Forum focused on the Future of Business; in Montreal, the topic was on Innovation and Entrepreneurship; and in Paris, we examined Digital Transformation. These highly successful occasions brought together alumni with some of the best business minds and most innovative entrepreneurs to engage in thought-provoking debate and generate new ideas.

The year's four alumni weekends were among the most well attended in our history, and the Alumni Relations team also worked together with local National Alumni Associations to present more than 120 other events worldwide, featuring INSEAD faculty speakers and further strengthening the bond between the school and our alumni community.

New leadership

Nida Januskis has been appointed as Associate Dean of Advancement. Ms. Januskis joined INSEAD in 2016 as Executive Director of Development, bringing extensive experience and expertise from her work at Harvard Business School.

NIDA JANUSKIS,
ASSOCIATE DEAN OF ADVANCEMENT



We are incredibly proud of and grateful to our amazing alumni network. We now boast:

54,794

alumni, over

3,000

volunteers,

55

National Alumni Associations and Global Clubs, and

7,659

alumni participants at reunions and events in 2016/2017.

The Infrastructure of Excellence

A truly world-class school requires truly world-class infrastructure. And during 2016/2017 INSEAD facilities – both physical and virtual – reached new heights. Whether through moves, renovations, planning or day-to-day upkeep, our campuses are in a constant state of improvement.

Campus development

A new era began for our Middle East Campus in August 2017 with the move to Abu Dhabi's gleaming new financial centre, ADGM Square.

Here, in the heart of the city's 'business and lifestyle destination', there are luxury shops, restaurants and healthcare facilities in addition to a vibrant hub of enterprise and education.

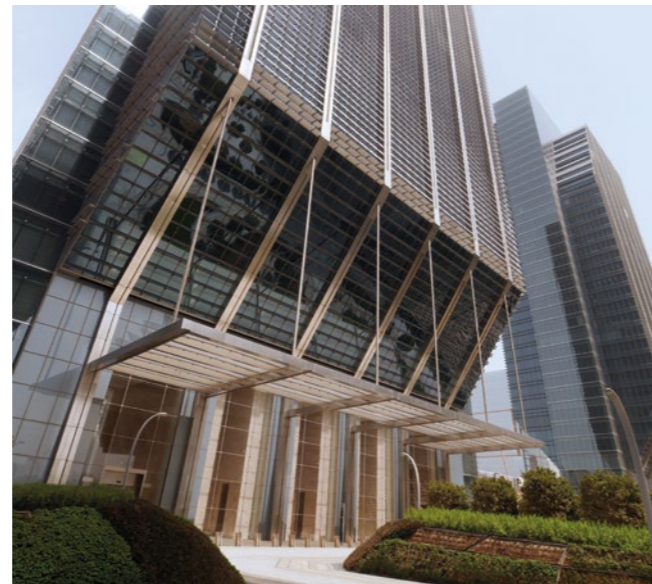
The state-of-the-art building is of similar total area to our previous site, but distributed much more conveniently over only two floors and designed around spaces that foster collaboration. All this – and the vastly superior location – will transform the learning experience for participants in Degree Programmes and Executive Education alike, as well as boosting our research output.

Meanwhile in Fontainebleau, the preparations for the forthcoming Europe Campus renovation continue. Over the summer of 2017, workshops were held to consult staff, students and faculty on their precise requirements, and the environmental and technical aspects of the project were fully assessed. The findings have now been translated into detailed plans, which will serve as the basis for a competition between four highly acclaimed architectural practices. The results will be announced at around the same time as this report is published.

We are also pleased to announce the completion of the multi-phase renovation of the Ermitage campus

residence. Its 145 well-appointed rooms across three buildings, along with the recent renovation of the Cercle fine-dining restaurant, will significantly enhance the experience of Executive Education participants and should help to raise our standing in the rankings.

For once, there is no new construction in Singapore to report. However, we retain the option to develop a piece of land adjacent to the campus, once developments at our other locations are completed.



MIDDLE EAST CAMPUS IN ABU DHABI



SCREENS REPLACE PAPER IN MORE AREAS ACROSS THE SCHOOL: STREAMLINING INFORMATION-SHARING AND ADDING NEW PEDAGOGICAL OPPORTUNITIES TO THE LEARNING PROCESS

The IT transformation

Across all three campuses, a major story of 2016/2017 was the quantum improvement in our IT services. Under the leadership of Attila Cselótei, Chief Information Officer, student satisfaction with IT has reached an all-time high. The IT department has emerged as a proactive, outward-facing team that anticipates the needs of all INSEAD stakeholders.

During the year, there were many innovations. The new Study@INSEAD Executive Education platform now combines all course reading into a single e-binder, eliminating the need to print hundreds of pages. The platform integrates interactive material, supporting the pedagogical process of developing ever more important leadership soft skills.

Similarly, the MyINSEAD student and alumni platform was redesigned to offer a seamless user experience along the entire lifecycle of our key stakeholders. A recently-added functionality has enabled our alumni to download relevant parts of the alumni directory as a PDF file, allowing INSEAD to forgo the increasingly unsustainable print directory.

The MyINSEAD streamlining process extends to functionalities for current students, where grades and transcripts are now easily accessed online. From a usability perspective, the look and feel of the portal is aligned to that of the INSEAD website, and just like the Study@INSEAD platform, it is fully mobile-friendly.

The IT team also enabled major efficiency gains in school administration. The MBA Admissions process is now fully paper-free, enabling INSEAD to provide a fast and high-quality Admissions service to applicants.

During the year we have adopted new payments best practice and deployed e-commerce technology to make paying programme fees or giving to INSEAD easier, even on mobile devices.

We always put very high importance on the integrity, confidentiality and availability of the data shared with the school. Consequently, we were protected from all IT security crises of the past year. This was due to the deployment of technologies, the enhancement and enforcement of processes, and increasing awareness of IT security risks across faculty, students and staff.

In 2016/2017, INSEAD made several major investments in physical equipment, renewing the audio-visual facilities in several amphitheatres and basic infrastructure in open spaces across the school.

In recognition of the strategic importance of technology to the future of the school – and many achievements of the team to date – the school's Executive Committee has been expanded to include the CIO role.

Finances

2016/2017 was not just an outstanding academic year for INSEAD. It was also an exceptional financial year, with double-digit growth in revenues and a record-breaking contribution from donors (see page 36).

In keeping with our long-term strategy of balancing revenues from Degree Programmes and Executive Education, it was particularly exciting to see both departments crossing the €100 million threshold in tandem.

As an independent, not-for-profit, international institution, INSEAD must generate its own income in order to sustain continued excellence. The main source of revenues is fees, but we also rely on philanthropy, the return on investment from previous donations (see pages 43 and 45) and a small number of other activities, such as commissioned research.

Unlike many of our competitors, we do not receive any money from a parent university and cannot count on regular government funding. It is therefore a significant achievement that, with revenues of €245 million, INSEAD is one of the world's largest business schools in budgetary terms. This performance is all the more impressive, given the ongoing economic uncertainty – particularly in Europe – and the continued squeeze on the MBA market.

INSEAD's revenue growth is not only due to our stellar performance in the business school rankings; it is also the result of previous years' decisions to invest in areas such as online education, fundraising, communications, Executive Education sales, the Leadership Development Centre in Singapore and the transformation of the MBA curriculum.



In fact, this year's surplus is particularly timely, as we go into a major renovation of our Europe Campus, an investment that we hope will lead to an even better INSEAD experience for all our community in future years. This is the beauty of our independent, not-for-profit status: in the years when we do generate a surplus, it becomes an engine for greater excellence and long-term growth.

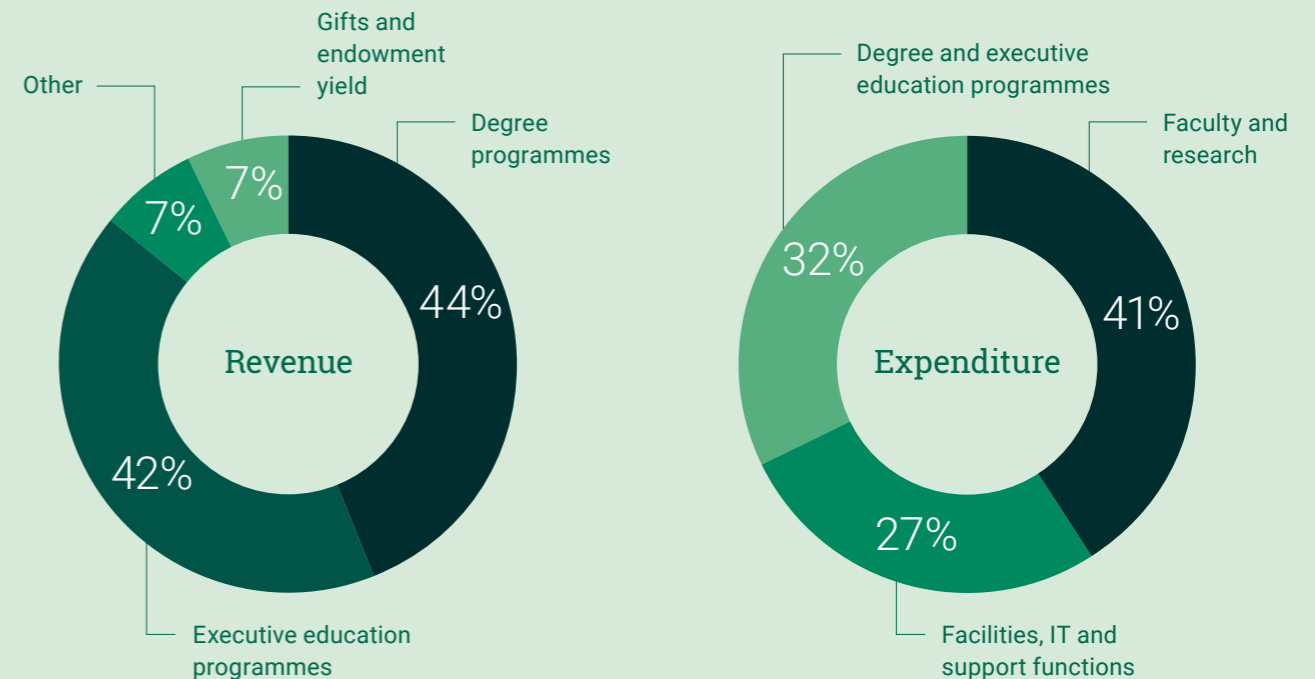
Eric Ponsonnet
Director General of Administration

Financial indicators

INSEAD is a not-for-profit institution with entities in various countries. Therefore we are not required to publish consolidated accounts, but all our statutory accounts are audited. We implement a governance structure which includes several committees of the Board of Directors responsible for Auditing, Finance and Risk, Endowment Management and Remuneration. The financial indicators below are directly extracted from audited combined accounts based on IFRS accounting standards.

In €'000	2017	2016	2015
Total Income	245,414	219,895	210,465
Operating Cash Flow	16,422	5,505	9,733
Cash Flow from Endowment (transfer to operations)	8,187	8,057	6,606
Net cash flow from Financing	(2,852)	(2,775)	(1,448)
Net cash flow used in Investing	(10,506)	(1,261)	(17,223)
Interest paid	(1,574)	(1,816)	(2,347)
Changes in working Capital & exchange losses/gains	5,254	7,044	(814)
Cash Flow	14,932	14,754	-5,493
Cash at year end	82,561	67,629	52,875
Endowment at beginning of the year	185,976	189,660	174,164
Donations received, net	16,426	4,700	3,585
Gains and losses from investment activities	18,329	(327)	18,517
Transfer to operations	(8,187)	(8,057)	(6,606)
Endowment at year end	212,544	185,976	189,660
Endowment performance rate	9.5%	-0.2%	10.6%
Spending rate	4.2%	4.5%	4.0%

€245m Total revenue in 2016/2017



Endowment

INSEAD's endowment supports the school's mission and provides a source of funds to build its competitive advantage, based on a long-term annual spending rate of 4.2%.

The endowment, which allows the school to plan, sustain and invest in faculty chairs, research projects, programmes, scholarships and facilities, has had an excellent year. Thanks to both to the generosity of donors and the performance of our investment strategy, its total value increased by €27 million to €213 million during 2016/2017. During this period, the INSEAD investment portfolio returned 9.6% in Euro terms (and 12.9% excluding currency hedging effects), which represents a significant outperformance versus the benchmark.

Today, INSEAD's endowment consists of a €202 million investment portfolio and a further €11 million investment in directly held property, cash and other assets. While the Endowment Management Committee takes overall responsibility for the endowment, experts from Partners Capital, who have advised us since 2007, manage the investment portfolio on our behalf.

Investment strategy and performance

The investment strategy has several objectives: to manage the portfolio to deliver long-term absolute returns; diversify the portfolio across multiple asset classes; select the most skilled asset managers within each asset class; and take into account ethical, social and governance issues.

The endowment remains broadly diversified across traditional and alternative asset classes, including equities, corporate credit, hedge funds and private market strategies.

The portfolio has a 23% allocation to private market strategies, which includes private equity, real estate and private debt. This percentage has increased over the last three years based on our belief that it will continue to generate an illiquidity premium of around 3-5% compared to public markets. The private markets portfolio is well diversified, ranging from loans to small-cap European firms, venture capital investments in early stage technology companies and private equity investments in middle market US firms.

The portfolio has a 37% allocation to public equities, which forms one of its key return-generating asset classes. The public equity portfolio consists of a combination of actively managed mandates, which invest in stocks based on deep fundamental analysis of the underlying companies and passive index trackers to express tactical geographical positioning. The portfolio is currently weighted towards European and Japanese equities at the expense of US stocks for a number of reasons, most notably the relatively attractive valuations.

The academic year's strong performance was driven by the outperformance of the underlying managers, most notably the equity managers. The strongest-performing managers were generally those with a greater focus on technology companies.

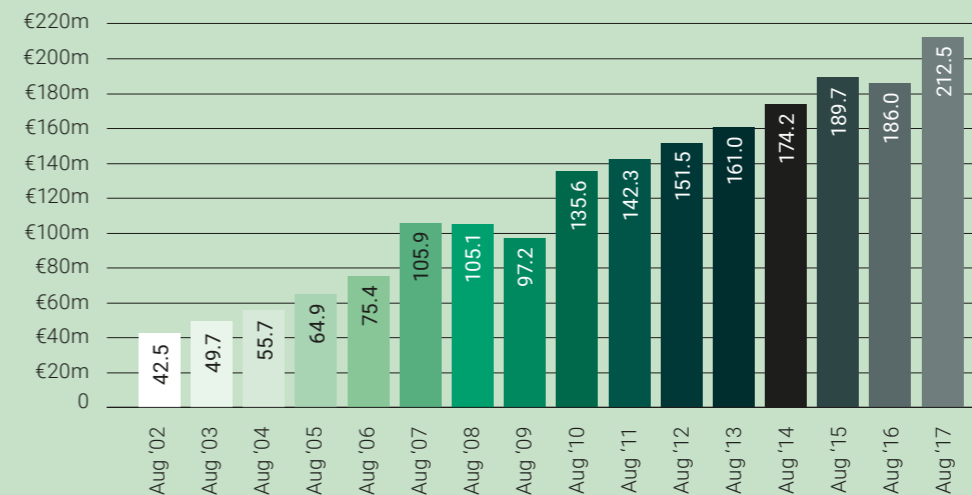
Overview

From March 2007 to the end of August 2017, the investment portfolio returned +55.0% (cumulatively) after deduction of fees and expenses. This represents a +10.5% cumulative outperformance versus the INSEAD Composite Benchmark, a custom benchmark adopted by the Endowment Management Committee.

INSEAD endowment and investment portfolio performance - academic year performance (August 2002 – August 2017)

Academic Year ¹	2007	2008	2009	2010	2011	2012	2013	2014	2015	2016	2017	Cumulative (Mar 07 - Aug 17)	Annualised (Mar 07 - Aug 17)
INSEAD Investment Portfolio return ²	+2.4%	-3.0%	-11.8%	+6.6%	+5.4%	+8.7%	+7.4%	-11.5%	+10.9%	-0.5%	+9.6%	+55.0%	+4.3%
INSEAD Endowment Return ³	+2.2%	-1.9%	-11.2%	+5.7%	+4.7%	+7.8%	+7.0%	+10.8%	+10.6%	-0.2%	+9.5%	+52.2%	+4.1%
INSEAD Composite Benchmark ⁴	+1.8%	-2.0%	-13.6%	+4.0%	+8.3%	+6.4%	+9.1%	+12.0%	-0.3%	+5.3%	+9.0%	+44.5%	+3.6%

Total assets⁵ of the endowment portfolio (August 2002 – August 2017)



¹ The academic year starts on 1 September and finishes on 31 August. This is reflected in the table above. For example, the year labelled 2017 reflects performance from 1 September 2016 to 31 August 2017. The year labelled 2007 includes only 1 March 2007 to 31 August 2007.

² INSEAD Investment Portfolio consists of the portfolio managed by Partners Capital.

³ The INSEAD Endowment consists of the portfolio managed by Partners Capital and all other assets including direct property, cash and other assets.

⁴ The INSEAD Composite Benchmark is a custom benchmark comprised of asset class indices (e.g. MSCI World NR 100% Hedged to EUR for the equity allocation or State Street Private Equity Index for the private equity allocation) and weighted to reflect the long-term strategic asset allocation adopted by the committee.

⁵ Total endowment portfolio assets include donations.

I have been serving on the Endowment Management Committee since 2011 and became its chair in 2016. It is a great honour for me to serve the school and its stakeholders in this role.

I thank all donors for their kind contributions, which have been pivotal to the growth of the endowment. This, in turn, is of paramount importance to the future success of INSEAD.

Mirjam Staub-Bisang
INSEAD Board of Directors



Our Constituencies in 2016/2017

Executive Committee

Dean
Ilian Mihov

**Deputy Dean;
Dean of Innovation**
Peter Zemsky

Dean of Faculty
Timothy Van Zandt

Dean of Research
Ziv Carmon

Dean of Degree Programmes
Urs Peyer

**Associate Dean of
Advancement and
Alumni Relations**
Nida Januskis

**Associate Dean of
Executive Education**
Mark Roberts

**Associate Dean of Degree
Programmes**
Graham Hastie

**Director General
of Administration**
Eric Ponsonnet

Chief Information Officer
Attila Cselótei

Advisory Council

Chairman
Sir Andrew Large
Former Deputy Governor,
Bank of England

Members
Rolf Abdon
Chief Executive, Abdon Mills

Jean-Pierre Berghmans
Chairman, Lhoist Group

Michael A. Butt
Chairman, Axis Capital
Holdings Ltd

John Clarkeson
Chairman Emeritus,
The Boston Consulting Group

Paul Desmarais Jr
Chairman and Co-CEO,
Power Corporation of Canada

Claude Janssen
Honorary Chairman, INSEAD;

Baron Daniel Janssen
Honorary Chairman, Solvay SA

Sven Kado
Non-Executive Chairman,
Marsh & McLennan Germany

Barbara Kux
Board Member, Firmenich,
Henkel, Total and Umicore

Ernest-Antoine Seillière
Honorary Chairman, Wendel

Charles Mackay
Chairman, Opera Holland Park

Edward Mork
Former Executive VP,
Royal Ahold

Cees J.A. van Lede
Board Director, Philipps and
Air France- KLM

Permanent Invitees
Ilian Mihov
Dean, INSEAD; Professor
of Economics, INSEAD; The
Rausing Chaired Professor
of Economic and Business
Transformation, INSEAD

Olivier Giscard d'Estaing
Honorary Chairman,
INSEAD Fondation

Andreas Jacobs
Chairman, INSEAD; Member
of the Board, Jacobs
Holding AG

Claude Rameau
Vice-Chairman, INSEAD;
Professor Emeritus, INSEAD;
Former Dean, INSEAD

Fondation Mondiale INSEAD

President
Rémy Best
Chairman, INSEAD Campaign
Board; Managing Partner,
Pictet & Cie

Vice-President
Claude Janssen
Honorary Chairman, INSEAD

Members
H.E. Dr Ali Rashid Al Noaimi
Director General, Abu-Dhabi
Department of Education and
Knowledge (ADEK)

Patrick Firmenich
Vice-Chairman of the Board of
Directors, Firmenich SA

Ilian Mihov
Dean, INSEAD; Professor of
Economics, INSEAD; The
Rausing Chaired Professor
of Economic and Business
Transformation, INSEAD

Eric Ponsonnet
Director General of
Administration, INSEAD

Mirjam Staub-Bisang
Chair, Endowment
Management Committee,
INSEAD; President, INSEAD
Switzerland Council; CEO and
Co- Founder, Independent
Capital Group AG

Fondation INSEAD

Honorary President
Olivier Giscard d'Estaing

President
François Hériard Dubreuil
Chairman, Orpar; Chairman,
Rémy Cointreau

Vice-Président
Lionel Sauvage
Président, AFHI-ART (Amis du
Festival de l'Histoire de l'Art)

Members
Christine Blondel
Adjunct Professor of Family
Business, INSEAD

Gérard Despinoy
Managing Partner,
Stradéfi Conseils

Hubert Gatignon
Emeritus Professor of
Marketing, INSEAD; The Claude
Janssen Chaired Professor
of Business Administration,
Emeritus, INSEAD

Maria Guadalupe
Associate Professor of
Economics and Political
Science, INSEAD; Academic
Director of the INSEAD
Randomised Control Trials
(RCT) Laboratory, INSEAD

Benoît Habert
Deputy CEO, Dassault Group

Lilia Jolibois
Member of the Board, Theolia SA

Jean-Marc Le Roux
Partner, Bain & Company

Timothy van Zandt
Dean of Faculty, INSEAD;
Professor of Economics,
INSEAD; The Schrodgers
Chaired Professor of
European Competitiveness
and Reform, INSEAD

Government Representatives
French Home Office
French Ministry of Finance
and Industry
French Ministry of Foreign
and European Affairs
(Foreign Office)

Permanent Invitee
Claude Janssen
Honorary Chairman, INSEAD

International Council

Honorary Chairmen
Claude Janssen
Honorary Chairman, INSEAD

Sir David Scholey CBE
Senior Advisor,
UBS Investment Bank

Didier Kling
President, Paris Île-de-France
Regional Chamber of
Commerce and Industry

Chairman
Daniel Labrecque
Founder and CEO,
DNA Capital

Members
Maurice Amiel

Jeremy J.G. Brown
Director, Matheson & Co Ltd

Michael A. Butt
Chairman,
Axis Capital Holdings Ltd

John Cutts
Chief Executive,
Pall Mall Capital Ltd

Jean-Pierre Garnier
CEO, Pierre Fabre SA

Bernard-Philippe Giroud
Advisor, LVMH

Ian Goldin
President, J. Martin 21st
Century School

Claire Gouzouli
Partner, First Consulting Ltd

Koichi Hashida
Managing Director,
Kyushu Electric Power Co Inc

Franz B. Humer
Chairman, Diageo Plc Former
Chairman, Roche Holding Ltd

Sven Kado
Non-Executive Chairman,
Marsh & McLennan Germany

Stephen Koseff
CEO, Investec Ltd

Barbara Kux
Board Member, Firmenich,
Henkel, Total and Umicore

Concetta Lanciaux
Advisor to the Chairman,
LVMH; Executive Vice-
President Synergies, LVMH

Igor Landau

Saki J. Macozoma
Chairman, Stanlib

Rick P. Menell
Chairman,
The Carrick Foundation

Norberto Morita
Chairman,
Southern Cross Group

Yutaka Nakamae
Legal Representative and
Vice-President, Transatlantic
Reinsurance Co

Jacques Nasser
Managing Director, One Equity
Partners LLC, Chairman,
Pan-African Capital Holding
Pty Ltd

Alfredo Novoa-Peña
Chairman, EcoEnergias del
Peru SAC

Lubna S. Olayan
CEO, Olayan Financing Co LLC

Jonathan Oppenheimer
Managing Director, De Beers
Consolidated Mines Ltd

Alix de Poix
Founder and President,
Apexes SA

Michael Pragnell
Founder CEO, Syngenta AG

Willem J. Prinselaar
Managing Partner, Privast
Capital Partners SA

Michael Prym
Consultant, Prym Consulting

M. Cyril Ramaphosa
Chairman, Shanduka Group

Claude Rameau
Vice-Chairman, INSEAD;
Professor Emeritus, INSEAD;
Former Dean, INSEAD

Michael S. Roskothen
Managing Partner, Atlantic
Century Innovation Network

Florian Schilling
Partner, Board Consultants
International

Ronaldo Schmitz
Former Member of the
Managing Board, Deutsche
Bank AG

Jorge Stecher Navarra
Member of the Board,
bancopopular-e.com

Hideya Taida CBE
Executive Vice-President,
The Japan Foundation

Gloria Tomatoe Serobe
Founder and Executive
Director, Wiphold

Shoichiro Toyoda
Honorary Chairman,
Member of the Board,
Toyota Motor Corporation

Michael Ullmann

Tony van Kralingen
Managing Director, South
African Breweries Ltd

Daniel L. Vasella
Chairman and CEO, Novartis
International AG 40

Philippe Vindry

Christian Vulliez
Consultant, CHV Conseils

Guy Wais
President, Excel Contact SA

Philip Yeo
Chairman, Agency for Science
Technology & Research

Jürgen Zech
Chairman, Denkerwerk

National Councils

Australasia

President
Susan Lloyd-Hurwitz
CEO and Managing Director,
Mirvac Ltd

Members
Erich Fraunschiel
Director, WorleyParsons Ltd

Todd Hannigan
Director, T2 Resources

Bernadette Inglis
Group General Manager,
Westpac Banking
Corporation Ltd

Mark Johnson
Senior Advisor,
Gresham Partners

Graham Kraehe
Chairman,
BlueScope Steel Ltd

Leon Michael L'Huillier
Non-Executive Director,
Woolworths Ltd

John Lydon
Director, McKinsey & Co Inc

David Mair
Managing Director,
Republic Consulting

Paul O'Sullivan
Chief Executive,
SingTel Optus Pty Ltd

John Pollaers
CEO, Pacific Brands Holdings
Pty Ltd

Heather Ridout
Independent, Non- Executive
Director, Australian Securities
Exchange Ltd

Patrick Snowball
CEO, Suncorp Group Ltd

Juliana Warner
Partner, Freehills

Austria

President
Cornelius Grupp
CEO, CAG Holding GmbH

Members
Matthias Calice
CEO, Gampen Sarl

Sebastian Heinzel
Chief Strategy Officer,
Wilfried Heinzel AG

Georg Kapsch
CEO, Kapsch-Group
Beteiligungs GmbH

Rudolf Knuenz
CEO, Unternehmens Invest AG

Peter Mitterbauer
CEO and Chairman, MIBA AG

Florian Niedersuess
CEO, EWW AG

Wolfram Senger-Weiss
Managing Director,
Gebrueder Weiss GmbH

Belgium

President
Jean Vandemoortele
Chairman, Vandemoortele NV

Members
Jean-Pierre Berghmans
Chairman, Lhoist SA
CEO, Ackermans &
Van Haaren NV

Nicolas Boël
Chairman, Solvay SA

Bert De Graeve
Chairman, NV Bekaert SA

Bernard Delvaux
CEO, SONACA SA

Roland D'leteren
Chairman, SA D'leteren NV

Baron Daniel Janssen
Honorary Chairman, Solvay SA

Christophe Hamal
CEO, Buy Way Personal Finance

Thomas Leysen
Chairman, KBC Group NV

Dirk Luyten
Managing Director,
Levante Capital Management

Martine Reynaers
Managing Director,
Reynaers Aluminium NV

Michèle Sioen
CEO, Sioen Industries NV

Jean-Christophe Tellier
CEO, UCB SA

Alexandre van Damme
Administrateur, InBev NV

Brazil & Latin America

President
Sergio Franco Averbach
President, South America and
Senior Client Partner, Korn/
Ferry International

Members
Gustavo Abelenda
President, Latin America,
Mondelez International Inc

Emerson de Almeida
Dean, Fundação Dom Cabral

Nestor Casado
CEO, Capital Invest

Carlos Cavalcante
Superintendente, IEL Nacional

Ana Maria Diniz
Board Member, Companhia
Brasileira de Distribuição

David Feffer
Chairman and CEO,
Suzano Group

Luiz Fernando Furlan
Co-Chairman of the Board,
BRF Brasil Foods SA

José Carlos Grubisich Filho

Alexandre Hohagen
Vice-President of Sales,
Facebook Latin America

Gustavo Marin
President, Banco Citibank SA

Maurizio Mauro
Managing Partner, TTLM

Bernard Mencier

Ulrich Otto
CEO, Otto Holding International

Paolo Picchi
President Latin America,
McCain Foods

Marcio Andrade Schettini
Executive Vice-President,
Itau-Unibanco SA

Claudio Szajman
Chairman, Grupo VR Vale
Refeição Ltda

Waldemar Verdi
Chairman and CEO,
Grupo Rodobens

Canada

President
Jean-François Sauvé
Managing Partner,
Chevreny Capital Inc

Members
Paul Desmarais Jr
Chairman and Co-CEO,
Power Corporation of Canada

Andrew Hanff
Partner, Roland Berger Montréal

Kamal Hassan
Founder and CEO, IncMind

Peter Kruyt
Vice-President,
Power Corporation of Canada

Daniel Labrecque
Chairman, INSEAD
International Council; Founder
and CEO, DNA Capital

Brett Miller
President, Jones Lang LaSalle

Alain Miquelon
President and CEO, Bourse de
Montréal Inc

Loudon Owen
Managing Partner,
McLean Watson Capital Inc

Charles Sirois
Chairman and President,
Telesystem Ltd

Guthrie Stewart
Senior VP and Global Head
of Private Investments, PSP
Investments

Alexandra von Schroeter
Head of Strategic New
Business and Client Portfolio
Management, Cumberland
Private Wealth Management Inc

Denmark

President
Niels B. Christiansen
President and CEO, Danfoss A/S

Members
Morten Eldrup Jorgensen
Partner, Nielsen Norager
Law Firm LPP

Christoffer Galbo
Partner, Copenhagen Counsel

Peer Kolendorf
President and CEO, Comitel
Holding A/S

Finland

Members
Eero Heliövaara

Arto Hiltunen
CIO and Vice-President, IT
Management, Kesko Oy

Markku Komsa
Design for Excellence Process
Manager, Nokia Solutions &
Networks

Mikko Kosonen
President, Sitra

Mikael Lilius
Chairman, Huhtamaki Oyj

Juha Ilari Rantanen
Advisor, IK Investment Partners

Kari Stadigh
Group CEO and President,
Sampo Oyj

Mitti Storckovius
Head of Global Business
Operations of Mobile Phone,
Microsoft 42

Maarit Toivanen-Koivisto
President of the Board,
Onvest Oy

France

President
Philippe Houzé
Executive Chairman, Galeries
Lafayette Group

Members
Antoine Arnault
President, Berluti

Thomas Bittner
President, INSEAD Alumni
Association France

François Bouriez
Co-CEO, Louis Delhaize
Company

Thierry Breton
Chairman and CEO, Atos

Grégoire Chertok
Managing Partner,
Rothschild & Cie

Jean-Frédéric de Leusse
President, UBS France

Marc de Leyritz
Partner, Egon Zehnder
International SA

Olivier Giscard d'Estaing
Honorary President,
Fondation INSEAD

Roger Godino
President, Holding International
de Développement

Jean-Jacques Guilbaud
Secretary General, Total SA

Benoît Habert
Deputy CEO, Dassault Group

François Hériard Dubreuil
President, Fondation INSEAD;
Chairman, Orpar; Chairman,
Rémy Cointreau

Claude Janssen
Honorary Chairman, INSEAD

Patrick Kron
President, Truffle Capital

Bruno Lafont
Co-Chairman,
LafargeHolcim

Frédéric Lemoine
Former Chairman of the
Executive Board, Wendel Group

Francis Morel
CEO, Les Echos Group

Benoît Potier
Chairman and CEO,
Air Liquide SA

Arthur Sadoun
Chairman & CEO, Publicis
Groupe

Bernardo Sanchez Incera
Deputy CEO, Société Générale

Pascale Witz
Non-executive director and
board member, Perkin Elmer
Instruments LLC

Germany

President
Ines Kolmsee
COO and CTO, EWE AG

Members
Dominik Asam
CFO and Member of the
Managing Board, Infineon
Technologies AG

Markus Conrad
CEO, Tchibo GmbH

Lutz Goebel
Managing Director &
Shareholder, Henkelhausen
GmbH & Co KG

Franz Haniel
Chairman of the Supervisory
Board, Franz Haniel & Cie
GmbH

Immanuel Hermreck
Executive Vice-President
Human Resources,
Bertelsmann SE and Co KGaA

Ralph Heuwing
CFO and Director, Duerr
Aktiengesellschaft

Carl Pfeffer
CEO, Aluminium-Werke
Wutöschingen AG & Co KG

Michael Phillips
MD, Castik Capital Sarl.

Sebastian Reschke
Owner, Reschke Advisory
Services

Wolfgang Schaefer
Member of the Executive
Board & CFO, Continental AG

Peter Schuh
Partner, Stratfields

Greece

President
Ulysses A. Kyriacopoulos
Chairman, S&B Industrial
Minerals

Members
Yiannis Akkas
Managing Director, Hellenic
Fabrics SA

Takis Arapoglou

Spyros Capralos
President, Hellenic Olympic
Committee

George David
Chairman, Leventis Group

Dakis Joannou
Chairman, Joannou &
Paraskevaides (Overseas) Ltd

Leonidas Los
Shipbroker, Trimarine
Shipping Company

Anastasios Manos
Logistics, Shipping,
Exports & Terminals Manager,
Lafarge SA

Nicholas Nanopoulos
CEO, Eurobank Ergasias SA

Calypso Nomikos
President, AM Nomikos
Transworld Maritime
Agencies SA

Doucas-Paul Paleologos

Dimitris Papalexopoulos
Managing Director, Titan
Cement Company SA

Minas Tanes
Chairman of the Board,
Athenian Brewery SA

Takis Theocarakis
Deputy Managing Director,
NIC.J.Theocarakis
SANissan Greece

India

President
Narayana Murthy
Chairman and Chief Mentor,
Infosys Technologies Ltd

Members
Anu Aga
Director, Thermax Ltd

Shyam Bhartia
Chairman and Managing
Director, Jubilant Organosys Ltd

Dinesh Dayal
COO, L'Oreal India Pvt Ltd

Adi Godrej
Chairman, Godrej Group

Ashwini Kakkar
Executive Vice-Chairman,
Mercury Travels Ltd

Kiran Mazumdar-Shaw
Chairman and Managing
Director, Biocon India Ltd

Aman Mehta
Director, Tata Consultancy
Services

Hital Meswani
Executive Director,
Reliance Industries Ltd

Sunil Bharti Mittal
Chairman and Managing
Director, Bharti Airtel Ltd

Deepak Parekh
Chairman, HDFC Ltd

Raja Parthasarathy
Managing Director, Morgan
Stanley India Co Ltd

Malvinder Mohan Singh
Chairman, Fortis Healthcare
(India) Ltd

Italy

President
Roger Abravanel
Director Emeritus,
McKinsey & Co

Members
Nerio Alessandri
President and Founder,
Technogym Group SpA

Michele Appendino
Chairman and CEO, A.M.E.
Ventures

Barbara Giulia Belloni
Managing Director, Russell
Reynolds Associates Inc

Diana Bracco
Chairman and CEO, Bracco
Imaging SpA

Massimo Capuano
Managing Director,
Centrobanca SpA

Luigi Consiglio
President, GEA SpA

Luca D'Agnese

Carlo De Benedetti
President, CIR Compagnie Industriali Riunite SpA

John Elkann
Chairman, Fiat SpA

Guido Frisiani
Director, McKinsey & Co

Gabriele Galateri di Genola
Chairman,
Assicurazioni Generali SpA

Luca Garavoglia
Chairman,
Davide Campari-Milano SpA

Vittorio Giaroli
Managing Director,
Value Partners Management Consulting

Luigi Gubitosi
General Manager, RAI
Radiotelevisione Italiana SpA

Paolo Guidelli Guidi
Chairman, Quadra
Management Consulting

Francesco Loredan
Managing Partner, BC Partners

Paolo Merloni
CEO, Ariston Thermo Group SpA

Carlo Montenovesi
Chairman, Cross Border SRL

Nicola Pianon
Senior Partner and Managing
Director, The Boston
Consulting Group Inc

Gian Luca Rana
Amministratore Delegato,
Pastificio Rana SPA

Corrado Sciolla

Francesco Starace
President, Enel Green Power SpA

Japan

Members
Susumu Fujimoto
Vice-President, MS&AD
Insurance Group Holdings Inc

Yasuhisa Fujita
President, Toyota Finance
Corporation

Ichiro Miyake
President and CEO, Allianz
Life Japan

Hiroshi Nonomiya
Partner, Crosspoint Advisors Inc

Ryoichi August Ueda
Member of the Board,
Senior Executive VP & CFO,
Mitsubishi Corporation

Netherlands

Presidents
Wiet HM Pot
CEO, IMC Int Marketmakers
Combin BV

Neil McArthur
Former CEO, Arcadis NV

Members
Dirk Benschop
President, Shell Netherlands BV

Koenraad Jacob De Heus
CEO, Koninklijke De Heus

Charles Kotting
Investment Director,
Gilde Equity Management
(GEM) Benelux

Carla Mahieu
Global Head Human
Resources, Aegon NV

Anton Rutten
COO Wholesale, Rural & Retail,
Rabobank

Feike Sijbesma
CEO and Chairman of the
Managing Board, Royal DSM NV

Jacques van den Broek
CEO and Chairman of the
Executive Board, Randstad
Holding NV

Joost van Heijningen

Jan Derck van Karnebeek
President CEE Region & Chief
Sales Of cer, Heineken

Cees J. A. van Lede
Board Director,
Philips and Air France-KLM

Annemarie Johanna van Neck
Country Manager
Netherlands, Coloplast

Dirk-Jan van Ommeren
Executive Director,
Oranje-Nassau Groep BV

Diederik van Rappard
Owner, Capitalize BV

D.P.M. Verbeek
Vice-Chairman Emeritus,
Aon Group Netherlands

Merel van Vroonhoven
Chairman of the Executive
Board, Autoriteit Financiële
Markten

Eugenie van Wiechen
Managing Director,
FD Mediagroep

Joop Wijn
Managing Board, ABN
AMRO Holding NV

Jan Zijderveld
President, Unilever Europe,
Unilever NV

North-East Asia

President
Sir David K. P. Li
Chairman and Chief Executive,
The Bank of East Asia Ltd

Members
Mao-Song Chang
BU Director, Roche Products Ltd

Christopher Cheng
Chairman, Wing Tai
Corporation Ltd

Kim Jung-Tai
Chairman and CEO,
Hana Financial Group

Ben Keswick
Chairman and Managing
Director, Jardine Matheson Ltd

Siu-Chuen Lau
Deputy Chairman and CEO,
Hysan Development Co Ltd

Michael Leung
Executive Chairman, Onwel
Group of Companies

Vincent Lo
Chairman, Shui On Group Ltd

Firdaus A. Siddik
Owner, PT. Jafra Mexindo

John R. Slosar
Chairman, Swire Paci c Ltd

Kan Trakulhoon
President and CEO, Siam
Cement Public Company Ltd

Norway

President
Birger Magnus
Founder and Owner, Birger
Magnus R&I

Members
Christian Berg
Senior Partner, Hitec Vision AS

Egil Hogna
President and CEO, Sapa Group

Siri Hatlen
CEO, Oslo University Hospital

Jens P. Heyerdahl d.y. Carl Otto Loevenskiold
President, Loevenskiold-
Vaekeroe A/S

Helge Lund
Group Chief Executive,
BG Group Plc

Dag Opedal

Silvija Seres
Managing Director,
TechnoRocks

Kristin Skogen Lund
Director General, NHO -
Confederation of Norwegian
Enterprise

Jon Erling Tenvik

Oyvind Torpp
Senior Partner & Managing
Director, The Boston
Consulting Group

Portugal

Members
Américo Amorim
Chairman and CEO, Amorim
Holding II

Álvaro Barreto
Administrator, Grupo Portucel
Soporcel

João Carvalho Talone
General Partner,
Magnum Capital

Vasco de Mello
Chairman of the Board,
Jose de Mello SGPS SA

Manuel Ferreira de Oliveira
President of the Executive
Commission, GALP Energia SA

Luis Gravito
Senior Partner, The Boston
Consulting Group

Miguel Horta e Costa
Vice-Chairman of the Board,
Banco Espírito Santo

Antonio Horta Osorio
Group Chief Executive, Lloyds
Banking Group Plc

Belmiro Mendes de Azevedo
Chairman of the Board, Sonae
SGPS SA

Luis Nazaré
Chairman & CEO, CTT
Correios de Portugal SA

Joaquim Paiva Chaves
CEO, MALO Clinic Group,
SGPS SA

Fernando Pinto
CEO, Transportes Aereos
Portugueses SA

Francisco Pinto Balsemão
President, Impresa SGPS

Pedro Queiroz Pereira
Chairman and CEO, Semapa -
Sociedade de Investimento e
Gestao SGPS

Carlos Jorge Ramalho dos Santos Ferreira
Chairman of the Executive
Board of Directors, Millennium
BCP

José Maria Ricciardi
Chairman of the Executive
Committee, Banco Espírito
Santo

Alexandre Soares

Dos Santos
Chairman of the Board,
Jeronimo Martins AD.

Fernando Ulrich
President of the Executive
Commission, Banco BPI SA

South-East Asia

President
Hsien Yang Lee
Special Advisor, General
Atlantic LLC

Members
Yoon Chiang Boon
Chairman and Managing
Director, Jardine Matheson
(Singapore) Ltd

Cintia Travella
President, INSEAD Alumni
Association, Singapore

Jamaludin Ibrahim
Managing Director, President
and CEO, Axiata Group Berhad

Khun Chatchaval Jiaravanon
Member of the Board, True
Corporation Public Company Ltd

Christina Choi Lai Law
Regional President, Asia, Middle
East, Africa, General Mills

Colin Low
President and CEO, Singapore
Investment Development
Corporation (SIDC)

Azman bin Hj. Mokhtar
Managing Director, Khazanah
Nasional Berhad

Shanti Poesposoetjpto
Senior Business Advisor, PT
Praweda Ciptakarsa Informatika

H.R.H. Abdul Qawi
Director, Supremo Management
Services Sdn Bhd

Doris Susan Sohmen-Pao
Executive Vice-President of
Administration, YALE-NUS
College

Pramukti Surjaudaja
Chairman, PT Bank
OCBCNISP Tbk

Sukanto Tanoto
Founder and Chairman, RGE
Pte Ltd

Oliver Tonby
Managing Partner, McKinsey
South-East Asia

Francis Sock Ping Yeoh
Managing Director, YTL
Corporation Bhd

Fernando Zobel de Ayala
President and COO, Ayala
Corporation

Spain

Members
Eduardo Berastegui
CEO, Comunicare Online
Marketing

José Bogas
Managing Director, Endesa SA

Jaime Carvajal Urquijo
President, Advent International

Leopoldo del Pino
President,
Estacionamientos Iberpark

Carlos Dexeus Sanpere
Partner, Altex Partners

Jorge Gallardo
President, Almirall SA

Christian Gut Revoredo
CEO and Managing Director,
Prosegur Compañía de
Seguridad SA

Pedro Larrea Paguaga
CEO, Ferroatlantica SL

Juan Ramon Llorente Perez
General Manager, Educamigos

Marta Malo
CEO, Grupo Epelsa SL

José Oliú Creus
Chairman and CEO,
Banco de Sabadell SA

Fernando Ruiz
President, Deloitte

José Sainz Armada
CFO, Iberdrola SA

Miguel Sanz
Director, SUSI Partners

Antonio Viana Baptista
CEO, Credit Suisse (Espana) SA

Sweden

President
Finn Rausing
Director, Tetra Laval Group

Members
Rolf Abdon
Chief Executive, Abdon Mills

Mikael Ahlström
Founding Partner, Procuritas AB

Jonas Berglund
IT Procurement Manager,
TeliaSonera AB

Stefano Dell'Orto
Senior Manager, Vattenfall AB

Claes Dinkelspiel
Chairman, E. Öhman J:or
Fondkommission AB

Boerje Ekholm
President and CEO, Investor AB

Joakim Olsson
CEO, SAG Group GmbH

Switzerland

President
Mirjam Staub-Bisang
Chair, Endowment
Management Committee,
INSEAD; CEO and Co-founder,
Independent Capital Group

Members
John Atkin
Member of the Board,
Syngenta Foundation

Anat Bar-Gera
Chair, Cyverse AG

Rémy Best
President, Fondation Mondiale
INSEAD; Chairman, Campaign
Board INSEAD; Managing
Partner, Pictet & Cie

Richard Bissonnet
Senior Advisor, Quarton
International

Georges Burki
Private Investor

Veit de Maddalena
Executive Vice Chairman,
Rothschild Bank AG

Patrick Firmenich
Vice-Chairman of the Board,
Firmenich SA

André Hoffmann
Non-Executive Vice- Chairman
of the Board, Roche Holding
Ltd; Non-Executive Vice-
President, Givaudan SA

Andreas Jacobs
Chairman, INSEAD; Member of
the Board, Jacobs Holding AG

Carolina Müller-Möhl
President, Müller-Möhl Group

Eric Tveter
CEO and Co-Founder,
UPC Cablecom

Alexander Wyss
Partner, Baker McKenzie Zurich

UK

President
John B. Singer
Managing Director,
Advent International

Members
Jack Boyer
Chairman of the Board, Ilika Plc

Paulo Cartucho Pereira
Partner, Perella Weinberg

Partners
Vivienne Cox
Chairman and Non- Executive
Director, Vallourec

Philip R. Hampton
Non-Executive Director, GSK

Andrew Large
Chairman, INSEAD Advisory
Council; Former Deputy
Governor, Bank of England

Charles Mackay
Chairman, Opera Holland Park

Charles Manby
Advisory Director, Goldman
Sachs International Ltd

John Phizackerley
Co-COO, Nomura Bank
International Plc

James Pike
Senior Independent Director,
Spirax Sarco Engineering Plc

Lord Simon of Highbury
Former Advisor to the UK
Cabinet Office

Paul Skipworth
Partner, L Capital Management

Mark Spelman
Future of the Internet,
World Economic Forum

USA

Members
Thomas C. Barry
President and CEO,
Zephyr Management, L.P.

Frank Brown
Managing Director and COO,
General Atlantic LLC

Roberto Buaron
Chairman and CEO, First
Atlantic Capital Ltd

Claude R. Charles
President, Azur Capital Ltd

John Clarkeson
Chairman Emeritus, The
Boston Consulting Group Inc

Vivien Godfrey
CEO, MilkPEP

Frederick M. Goltz
Founder, Hattington Capital

John W. Jackson
Chairman,
The Liana Foundation

Tim Kingston
Managing Director,
Goldman Sachs & Co

Victor Menezes
Senior Advisor,
New Silk Route Partners, LLC

Michael A. Neal
Former Vice-Chairman,
GE Commercial Finance

Julio Pekarovic
CFO, Dataminr

Kevin Ryan
Chairman and CEO, AlleyCorp

John A. Thain
Chairman and CEO, CIT

G. Richard Thoman
Managing Partner,
Corporate Perspectives

Tommaso Trion
CEO, Monsoon Commerce Inc

David Weinstein
Emeritus Professor of
Marketing, INSEAD

Graduating Classes

MBA'16D

A

Ali Abbas
Punya Abbhi
Lukas Patrick Abegg
Simisola Abere
Chaitanya Adabala Viswa
Doga Ademoglu
Francesca Admetller
Navarro
Paridhi Agrawal
Dayana Aguillar
Deniz Akdemir
Adekunle Aladewolu
Hadi Alaghehband
Abdulelah Alaskar
Sarah Anna Al-Bashtali
Abdullah AlRugaib
Casilda Alvarez
Aditya Amonkar
Jin An
Jesper Juul Andersen
Tobias Hjelm Andersen
Tamer Antabi
Fernanda Gemir Antunes
Raquel Araujo Almeida
Priscille Arbour
Piero Daniel Ardito
Ynouye
Deniz Arik
William Armstrong
Jose Arnau Lopez-Leiton
Sharad Arora
Tanay Arora
Senthooran Arumugam
Byron Ascott-Evans
Katherine Atherton

Justin Au
Alesya Averchenkova
Foad Azima

B

Tural Bakhshaliyev
George Stewart Baldwin
Olubusola Yejide Banjo
Olena Banna
Mayank Mayur Bansal
Shikha Bansal
Andrii Bantser
Madhur Bapat
Michel Barakat
Maxime Barbier
Ekaterina Baybus
Tarek Bechwati
Emmanuele Benatti
Olivier Bennett
Anne Benveniste
Bernardo Betley
Nandini Bhardwaj
Anjali Bhide
Hitesh Bhuraria
Ohad Biron
Arina Bobrova
Thomas Alexander
Bossart
Alvaro Botella
Benoît Bousquie
Douglas Bove
Birgit Braun
Owen Brewer
Robert Brinckman
Pedro Brito da Cruz
Marie-Alix Bur
Matthew Burke
Samuel Burrell

C

Sophie Cahen
Maria Florencia
Castagnino
Lukas Cerno
Floriane Chabert
Aleksandr Chaikun
Kok Ding Chan
Melly Chandra
Hsing-Yu Chen
Nawei Chen
Jingchi Chen
Yulia Chernyy
Xavier Cheval
Romain Chevrillon
Lam-Chi Gigi Chik
Jeongsoo Choi
Chi Tang Chow
Hong-Lin Chu
Guillem Clemente
Grabalosa
Constance Hélène Denise
Clisson
Stéphane Colle
John Collins
Mahamadou Coulibaly
Rayan Dawud
Rishabh Dayani
Austin DCosta
Aigline de Ginestous
Romain de Ipanema
Moreira
Jose De La Fuente
Hederick de Vries
Nico Dehnert
Karin del Rey Puech

Carlos Delrieu
Vincent Demassiet
Sanyukta Bhaskar Desai
Tarun Dhawan
Vij Dhayan
Danielle Dias Coutinho
Mark Christian Neil Dimal
Yijie Dong
Diogo Duarte
Alysson Duffles de Brito

E

Jeff Will Jan Eeckhout
Peta Egan
Rodrigo Eimori
Fabrice Karim El Gohary
Marie-Thérèse El Hoyek
Fahd El Moujahid
Mostafa Eltaweel
Damien Engelhardt
Carlos Eduardo H Estrella

F

Khaled Farid
Syed Hassan Farooq
Shahrazad Farshi
Leonardo Fascione
Marina Fashchilina
Raphaël Felenbok
Oskar Feng
Tian Tian Feng
Begona Fernandez Caso
Carla Fernandez de
Henestrosa
Pablo Fernandez Elviro
Judith Finegold
Xiu Ping Laura Foo
Xiang Jie Cyrus Foo

Daniele Francescon
Mark Christopher Francis
Elena Fuetsch
James Furnival

G

Alexander Galimberti
Ciaran Galvin
Stefano Gambaro
Kaushik Gangiredla
Francisco Garnel
Jouke Gerrit Abraham
Garretsen
Alexandre Gattaz
Marco Gazzola
Michel Gebrael Khoury
Dmitriy Gendzel
Mohamed Ghanem
Nour Gharios
Rohit Ghosalkar
Kushal Ghuwalewala
Pavel Glukhov
Varun Goel
Radhika Goel
Anchal Goel
Guilherme Gondo
Shengli Gong
Nicolas Gonzalez
Aleksandra Goulioutina
Andrew Gray
Kangying Gu
Marcos Guerra
Pavani Gulati
Felicia Gunadi
Jie Guo
Siddhant Gupta
Neel Gupta
Eric Gutzwiller

H

Camilla Emilie Haastrup-Nielsen
 Natasha Haddad
 Matiar Hadimahmoodi
 Yutaka Hamano
 Ziyang Han
 Sean Hanlon
 Gilbert Harrap
 Hamish Harten
 Thomas Fitzgerald Heck
 Stephan Friedrich Heinz
 Sebastian Heitz
 Kay Patrick Helfenberger
 Ville Heikki Filemon Herlin
 Iban Herrerias Munduate
 Markus Hetze
 Carlo Hohmann
 Xavier How-Choong
 Hailey Hu
 Yijia Hu
 Martin Huarte
 King Hoi Raphael Hung
 Elmir Huseynov

I

Hidekazu Idonuma
 Muhammad Usman Iftikhar
 Omer Inam
 Wei Bo Lu

J

Aman Jain
 Manav Jain
 Shashank Jain
 Manuel Janisch
 Avantika Jawahar
 William Jones
 Ravi Jose
 Satomi Jujo
 Rohan Juneja

K

Katsiaryna Kachan
 Tahsin Kadry
 Archanaa Kailasam
 Elias Karam
 Ashwath Karpe
 Majid Karzai
 Thomas Victor Kasper
 Tavleen Kaur

Naoto Kawabe
 Akiko Kawamura
 Samuel Kaye
 Christos Kehagias
 Julia Anne Kennedy
 Ian Kershaw
 Rahul Kewalramani
 Omar Khalid
 Farhad Khalid Rafique
 Varun Khanna
 Arra Khararjian
 Michelle Khong
 Jia Chen Khoo
 Vikram Khosla
 Waleed Khoury
 Hyena Kim
 Michael Kingfield
 Paul Kleinknecht
 Clémence Yseult Knaébel
 Emily Ko
 Pranith Kodakandla
 Pavel Kondrashev
 Roza Philippa Korai
 Vasilios Kottas Bonel
 Saurav Kripalu
 Arjun Krishnan
 Tomas Kubis
 Parikshit Kumar
 Aroop Kumar
 Karandev Kunjur
 Chung-Kai Kuo
 Yulia Kuzmicheva

L

Ingrid Lagae
 Anusha Lalwani
 Ori Landau
 Yuan Kai Law
 Johanna Maria Lehner
 Jeremy Leopold-Metzger
 Pattarakamol Lertsanti
 Tomas Lev
 Jonathan Lexa
 Han Li
 Xinyu Li
 Shang Li
 Shenggang Li
 Yehua Li
 Tao Li
 Kathy Liang
 Crystal Ning Ai Liang
 Ling Lin
 Pamela Liu
 Catherine Lo

Chi Nga Lo
 Hanmeng Long
 Edgar López Möller
 Jacobo López Silva
 Johannes Gottfried Losbichler
 Victor Lu
 Dunhui Luo
 Trung Luong
 Thi Thu Ha Luong

M

Alykhan Madhavji
 Prateek Maheshwari
 Siwei Mai
 Igor Makar
 Eevaleena Maki-Uuro
 Haider Malik
 Andrew Manugian
 Tommaso Marchese
 Adam Marek
 Pierre-Axel Margulies
 Dionysios Maroulis
 Luiz Martins
 Apoorv Mathur
 Alessandro Mazzarini
 Benjamin McCabe
 Phillip McIntosh
 Alexandre Mehrdad
 Nishesh Mehta
 Varun Mehta
 Mael Mertad
 Dimitri Merza
 Emil Minzat
 Anuj Mishra
 Abhijeet Mohanty
 Tessa Möller
 Rodrigo Moreira
 Edward Morgan
 Sumika Moriue
 Saba Morshed
 Samer Moubarak
 Anirudh Mukkavilli
 Tinashe Mukogo
 Michael Selwyn Mullins
 Zeid Munir
 John Munson
 Tinatini Murgulia
 Giuseppe Muroi

N

Tyll Naber
 Ramesh Gopal Nair
 Mini Nair

Arif Nasibov
 Mohamad Nasreddine
 Giovanni Nati
 Ram Chaitanya Nellore
 Jada Neumann
 Rodrigo Neves
 Ganga Nirmalkumar
 Yaakov Nissan
 Ulf Nore
 Pedro Noronha Sanches
 Tala Noueihed
 Diego Nouet Delgado

O

Chukwuedozie Okeleke
 Miyo Okuda
 Anton-Moritz Oliver
 Clémence Ollivier
 Solveig Oma
 Mauro Ometto
 Onur Önk
 Alexander Ostanko
 Kacper Ostrowski

P

Joseph Thomas Pacilio
 Elena Padurarur
 Arun Pai
 Tiago Paixão
 Owain David Palmer
 Tal Panigel
 Abhishek Pansari
 Ricardo Papayanopoulos
 Gomez Ortigoza
 Arvind Parasuri
 Pablo Andres Paredes
 Nimay Parekh
 Shraddha Bhushan Patil
 Adam Pearson
 Raquel Pedro
 Alessandro Perrone
 Tomas Petovsky
 Teodor Peytchev
 Maria Francisca Pinho
 Maciej Piotrowicz
 Alexandra-Roxana Popa
 Gabriel Pozzer Kuhleis
 Livia Pozzi
 Aditya Prasad

Q

Shuaul Qamar

R

Stéphane Racowski
 Annika Rahm
 Dinackar Ravinder Chittoor
 Akanksha Rawat
 Inês Relvas
 Nicholas Rew
 Hasan Riaz
 Jad Rida
 Casper Roex
 Manuel Alfonso Roman
 Jason Rosasco
 Jean Rouault De Coligny
 Jan Rozenbaum
 Carmen Ruiz Pozuelo
 Thomas Rushby
 Andrei Ryan

S

Rebeca Sa Couto
 Sarvesh Sah
 Namir Sahyoun
 Juan Salas
 Martim Salgado
 Jose Vicente Sanchez Gavito
 Jonathan Sanders
 Nirav Sanghvi
 Anaïs Sanglier
 Arne Sanne
 Antonius Santoso
 Miguel Angel Sanz
 Shashwat Sapre
 Eren Sarioglu
 Anna Sarre
 Deepraj Singh Sawhney
 Vadim Sayafarov
 Isabell Scheringer
 Fabian Schier
 Thomas Schlingensiepen
 Christian Friedhelm Schoenherr
 Astrid Frederike Schrader
 Christina Schramke
 Petr Sedunov
 Yuan Segretier
 Roudy Semaan Chalhoub
 Mitrabina Sen Khare
 Marion Senant
 Anaisa Seneda
 Elena Sergeeva
 Eduardo Serzedelo de Almeida

Rohan Sethi
 Roman Shaekhov
 Kanira Shah
 Ahmed Raaidh Shareef
 Shiv Sharma
 Ashwin Shetty
 Lanre Shonoiki
 Geri Azriel Siddik
 Pedro Miguel Silva
 Kunwar Singh
 Hanuth Singh
 Khushboo Singhal
 Christopher Smith
 Harry Smith
 Yulia Snedkova
 Lovro Soldo
 Tatiana Sologub
 Tiago Sommacal
 Kouame Joel Henri Sonan
 Denis Sop
 Eduardo Martins Spina
 Vatsal Srivastava
 Eduard Stein
 Andreas Guenter Strangfeld
 Tyler Strombom
 Hemamalini Sukumar
 Eric Sullivan
 Chang Sun
 Trisha Suri
 Clara Sussmann
 Tatiana Sviridova
 Pawel Szerling

T

Manabu Takemura
 Yee Ling Tan
 Sherry Tang
 Achareeya Tanrudee
 Xiaolin Tao
 Maimoona Tariq
 Minghua Nicholas Tay
 Anna Teplan
 Rajesh Tever
 Sebastião Thomaz
 Kartik Tikku
 Ing Zun Timothy Tiong
 Arjun Tomar
 Qinjie Tong
 Tanya Toumadj
 Toby Truscott
 Vasily Tsvetkov
 Tien-Wei Tu
 Devesh Tyagi

U

Nneamaka Ubah
 Daniel Urrutia
 Jeremy Ussel
 Amirali Valliani
 Winnie Van
 Stephanie van Eetvelde
 Isabelle Vandenbroucke
 Marina-Laura Vasile
 Francisco Vaz Garcia
 Julio César Vázquez Ayala
 Sashidhar Vemuri
 Francisco Ventura Coelho
 Vieira Alves
 Amparo Villen
 Fernando Villoslada Poole
 Yulia Vizho

W

Brittany Walcutt
 Maximilian Waldron
 Naheema Walji
 Di Wang
 Tao Wang
 Yingying Wang
 Runyu Wang
 Xiaofan Wang
 Ying Wang
 Yuanchen Wang
 Robin Wei
 Andre Weilbach
 Clayton Welch
 Carolyn Wendell
 Hans Leonard Cedric Wiermans
 Philip Williams
 Shena Willis
 Tiago Winter
 David Woo
 Guoding WU
 Richard Wyborn

X

Yang Xu
 Wenying Xu

Y

Can Yagli
 Alexander Yanakiev
 Ye Yang
 Saqib Yasin
 Qi Ye

Wenshan Yeo
 Aik Yeoh Tan
 Seung Hun Yoo
 Stacey Yue

Z

Giacomo Zaninetta
 Brian Zehr
 Ye Zhang
 Xieyi Zhang
 Yaohua Zhang
 Yu Zhao
 Xiaoying Zhou
 Xin Zhou
 Youssef Zikri
 Julie Ziskind
 Martino Zizioli
 Ana Maria Zuniga

MBA'17J

A

Hicham Aber
 Youssef Abouseif
 Pat Achakulwisut
 Petrine Addae
 Pinar Ademoglu
 Alperen Adikti
 Narendra Adoe
 Armine Afeyan
 Pedro José Aguas Fernández
 So Yeon Ahn
 Presca Ahn
 Oussama Ajala
 Murali Akella
 Ahmed Al-Awadi
 Marc Al-Helou
 Ahmad Ali Adib
 Feras Aljishi
 Abdulaziz Altubayyeb
 Marvin Amberg
 Kobina Amoo
 Manuel José Amor Loureda
 Suruchi Anand
 Jaime Andaluz
 Alexander Appel
 Andres Areitio
 Basil Ariss
 Evgeniya Armstrong
 Julian Artope
 Vladimira Artope

Rahul Arya
 Nikita Asthana
 Nuri Atay
 Inci Atrek
 Luiz Otavio Avelar
 Ron Aviv
 Yonatan Avivi
 Ligia Valentim Azevedo

B

Yong Min Bae
 Hariher Balasubramanian
 Alok Balibanu
 Yoav Banai
 Patricia Bandeira Vieira
 Adwoa Nyeequa Banful
 Joao Baptista
 Giuliano Baptistella
 Nadim Barakat
 Pedro Barbosa Franco
 Cecilia Barella
 Pierre William Bartholin
 Richard Bassil
 Emilien Louis Batouche
 Marton Bekes
 Julien Belliato
 Cristian Benavides
 Scott Berdahl
 João Paulo Bussa Ferreira
 Felipe Hernan Bezamat
 Serhat Birbilen
 Jules Birchler
 Melissa Blackford
 Carlos Blanco
 Jonas Sebastian Blaschke
 Victor Borba Martha
 Paul Bouan
 Othmane Boujemaoui
 Shai Bracha
 Alexandre Breton
 Roxanne Alicia Busschers

D

Sophie Diane Béatrice D Herbomez
 Clarisse da Silva Monteiro Liguori
 Rahul Dabas
 Ying Dai
 Yasir Mubeen Dar
 Walid Darwazeh
 Catherine David
 Pasquale D'Avino
 Hugo Jacques de Bot
 Henry de Boysson
 Eloisa de Castro
 Peter-Paul de Leeuw
 Jean Pablo De Mello
 Alexis de Romanet de Beaune
 Alessandro Della Nina
 Diana Denke
 Samiksha Dewan
 Udit Dhawan
 Tommaso di Robilant
 Diego Dias Bergheim
 Serban Costin Dick
 Dushyant Dogra
 Luca Dotti
 Nikita Dresswala
 Joshua Dreyfuss
 Jinglu Du
 Simone Dutto

C

Weixian Cai
 Stefania Calabretta
 Jose Cantante Viana Baptista
 Javier Carinena
 Juan Pablo Castanon Menendez
 Chiara Cavagnino
 Sushant Chalipat
 Chantal Chalouhi
 Carol Chan

E

David Eberle
Dominik Egger
Dahlia El Assi
Rami El Hakim
Rami El Mir
Hassan Eldesouky
Sami Ergin
Michael Eskander

F

Nicolas Faber
Gregory Faitas
Abdul-Rahman Fakhouri
Sharon Hsin-Wen Fan
Rong Fan
Tony Feghali
Christopher Feliciano
Fabrizio Ferraro
Edoardo Frangi
Maxime Freyss
Kei Furukawa

G

Esenam Gakpo
Mikey Gallant
Aditya Ganesh
Sonum Garg
Oleksiy Garmash
Oreste Gasparro
Igor Gavrilovic
Lukasz Gaweda
Egor Gazarov
Lina Gedvilaite
Efsthios-Paris Georgoudis
Vlad Gheorghiu
Maria Georges Ghostine
Artem Gimadiev
Elena Giusti
Marijn Goemans
Borja González
Jonas Gossler
Noah Grade
Christian Grosse
Patrick Gruenewald
Tong Gu
Linda Guemne Jouonang
Pierre Guerin
Zohaib Gulzar
He Guo
Zhenru Guo
Ashima Gupta

Nikhil Gupta
Raghav Gupta
Luis Guzman

H

Christopher Habib
Alice Hahn
Tatsiana Haidzinskaya
Tomasz Hajduk
Bassel Hakoura
Xu Han
William Handjaja
Shuai Hao
Laura Heely
Philipp Hein
Sammy Hejazi
Thomas Hiriart
Thomas Hoddinott
Stuart Hoddinott
George Howe
Yee Huang
Freda Hubert
Ellen Hutsebaut
Johnson Hwang

I

Zehra Ijaz
Stephen Isaacs
Alina Islam

J

Elise Jacques
Arnav Jain
Nicolai Jakobsen
Joao Jalles
Damian Jastrzebski
Shreyans Jha
Alice Bochao Ji
Hwansoo Joo
Jordi Jurnet Sastre

K

Mariam Kaan
Dmitry Kalachev
Kirill Kalinkin
Claudia Franziska Kampel
Kareen Lim
Andrew LIN
Yi Liu
Yiwei Liu
Giulio Longoni
Fran Loranca Barrachina
Jingwei Lou

Nathaniel Kenninger
Leila Khalil
Timur Khamitov
Sabeena Khan
Apoorve Khandelwal
Pavel Kharlamov
Inna Khlon
Kunlanan Khunwong
Andre James Klaus
Maria Klimko
Igor Kljujic
Vladimir Klimov
Tomasz Radoslaw Kluczek
Mehmet Kocak
Olivier Leon Konig
Rutger Koning
Gabriela Kosasih
Kenneth Kou
Thouk Koukoulios
Lada Kravcenko
Linda Kunecova
Wai Kwun Kung

L

Jean-Jacques Lafon
Ben Lai
Ishita Lamba
Gyozo Lantos
Alex Michael Lawrence
Alexandre Le Cann
SahngJoon Lee
Kuok Howe Lee
Nathan Tze Hong Lee
Zachary Lee
Amelie Lefebvre
Hao Lei
Cheng Yuen Leong
Yilong Li
Ivan Li
Xu Li
Ning Li
Pan LI
Yi Hsuen Li
Agnes Lie
Jacinta Lim
Kareen Lim
Andrew LIN
Yi Liu
Yiwei Liu
Giulio Longoni
Fran Loranca Barrachina
Jingwei Lou

M

Ahmad Maarouf
Ross MacDonald
Laura Macedo
Philip Mader
Tarik Madi
Andreas Maertl
Kiana Maggiolo
Dimitri Magiakos
Archis Mahajan
Chaya Maheshwari
Naman Maheshwari
Swapnil Maheshwari
Nicholas Manske
Natalia Maslicov
Jay Mason
Helena Mateu
Louis Mather
Ivana Matuskova
Filippo Mazzetto
Alexander McClarty
Margareta McConnell
Keri McDermott
Jonathan Medalsy
Ketan Mehta
Kemal Arcan Menguturk
Henri Menier
Amine Menouni
Daniela Mesalles
Matt Michel
Laurent Michiels
Jan Mier-Jedrzewicz
Benjamin Mikkelson
Yerlan Minavar
Sharjeel Ejaz Minhas
Yu Mizushima
Juan Mateus Moitinho de Almeida
Jose Moreira
Julien Moretton
Miguel Moura
Kazi Mofrad Muntasir
Damu Murti
Ahmad Fazril Mustapa
Meena Muthuraman

N

Marwan Nadda
Tatsuya Nagata
Paulo Nakamura
Hisham Naseem
Taha Naseem
Ron Nevis
Zhenfu Ng

Yanping Ni
Jimmy Nicolas
George Nodder
Marta Nogueira Leite
Pereira Bento
Blaise Nothorn

O

Erik Obermayer
Hiroko Okamura
Rodrigo Olaechea
Jorge Luis Ordenez
Ido Oren
Robert Orr
Hazal Osken
Stanislaw Ostoja-Starzewski

P

Andrey Pak
Marina Palermo Franco
Jackson Pan
Spiros Panagiotatos
Matthew Paone
Kunali Parikh
JaeBum Park
Roy Park
Vladimir Parkov
Priyam Patel
Shilen Patel
Manu Pathak
Pratyush Patil
Nicholas Patocki
Kelsey Pegden
Aishwarya Pendurti
Giampiero Pesenti
Paul Peyrucq
Pierre Pharaon
Ee Hui Phoa
Hien Thi Thu Jenny Phung
Balakrishna Pillai
Arseniy Prishchepa
Anukriti Puri
Adrian Pusz
Angelo Qiu
Shuyan Qu

Q

Alessandro Quintarelli

R

Chloe Raby-Roussel
Kathleen May Rademan

Hamza Raees
Mohammad Masudur Rahman
Ammu Rajendran
Sid Ram
Vishal Ramakrishnan
Deepak Ramamurthy
Rachana Ramchand
Shaan Rauniyar
Roshni Reddy
Jaime Rego Caverro
Ofer Reish
Gregoire Pierre Marie Wencesla Renard
Siobhan Richards
Julio Rizk
Christopher Robbins
Robert Rode
Colin Rodrigues
Mathieu Romary
Alexis Roque
Francisco Roque do Vale
Alves da Silva
Daniela Rosa
Angela Rouse
Maria Therese Boniface Roxas

S

Filippo Sabbion
Luís Sacadura
Raza Said
Abhinandan Saini
Timothy Salak
Jad Saleh
Pedro Sakma Garcao
Castro Henriques
Aymeric Salley
Marcelo Santiso Martinez
Sagar Sarbhai
Dmitriy Savchenko
Philip Karl Fredrik Saven
Saad Sayeed
Alexander Schachner
Omer Schloss
Kailing See
Vanessa Seip
Maksim Semenov
Ji Eun Seo
Pawel Seweryn
Hila Shabtai
Chaitanya Rajiv Shah
Sagar Shah
Youhee Shin
Noriko Shindo

Nakul Shinghal
Omri Shoshan
Shu Shu
Atul Shukla
Harkanwal Singh Sidhu
Artur Sienczewski
Hugo Silva
Quint Simon
Isha Singh
Siddharth Singhal
Wanpiya Sinthuvanich
Prithvi Sisodia
Bilal Skaf-Halaby
Gerasimos Skaltsas
Stepan Smirnov
André Gil Soares Campos
Karsten Bernholm Sorensen
Anna Spyrzynska
Iana Stantieru
Celine Stein
Savvas Stergiou
Shira Stites
Lucas Stoops
Artem Stokov
Petrus Johannes Strydom
Syed Sadaf Sultan
Vinay Suri
Vladimir Svintsov
Justyna Swiatkowska
Daniel Szabo

T

Kamal Tak
Maurizio Talarico
An Tan
Xiaoxiao Tang
Chen Tang
Pongpant Tantijunyakul
Hélène Marie Anne Tarissi
Giovanni Tassini
Paul-Frederick Taylor
Thomas Teixeira da Mota
Lukas Thalhammer
Leopold Thomassin
Andre Tibyrica
Constantin Tillmann
Eser Tireli
Ovidiu Tisler
Daniel Toledano
Leilei Meng Xin Tong
Vaibhav Toshniwal
Erietta Tosidou
Maxime Toth

Thomas Tran Ngoc My
Mihai Alexandru Trisca Rusu
Svetlana Tsarichenko
Kate Tsunoda

V

Dimitri Vaharis
Naveed Wakil
Sravya Vallabhaneni
Rob van der Meer
Pieter-Jan Van Haute
Laurens van Hees
Lindsay Van Landeghem
Samuel Vandewaeter
Jacquelyn VanOs
Aksel Vansten
Archi Varma
Ivaylo Vassilev
Divya Vasudeva
Martin Vera
Caroline Veys
Christian Vezjak
Amogh Vidwans
Roshan Vijayakumar
Lorenzo Villa
Kaushik Sriram Viswanadha
Joshua Von Fange
Panita Vongkusolkit

W

Willard Walker
Mengxiao Wang
Peng Wang
Alex Wang
Hong Fei Wang
Victor Weisberg
Yimin Weng
Thomas Whitelaw
Willemijn Witteveen
Jia Wong
Anson Wong
Mateusz Wozniak
Edie Wu
Jeff Wu
James Wyse

X

Shihui Xiang
Yanmei Xu
Gang Xu
Marc Xu

Y

Kentaro Yanashima
Shengjunjie Yang
Sahitya Yarlagadda
Emmanuel Ye
Batu Yigit
Phyllis Yip
Joe Younes
Muzi Yu

Z

Hussein Zaazou
Aric Zhang
Yuxi Zhang
Di Zhang
Marc Zhuang
Juliana Zibilianu
Eliza Malgorzata Zisopulu
Mario Zotes

Global
Executive MBA
Class of 2017

Adib Abou Jaoude
Damilola Adeola Adisa
Andreas Aepli
Samir Afalli
Amol Aggarwal
Sébastien Alanon
Saleem Alblooshi
Georges Adjibola Ale
Raed Al Nazer
Amro Al Qubaisi
Rizwana Altaf
Benjamin Anderegg
Olivier André
Pascale Anglade
Alexandre Arnon
Sakeenat Bakare
Fernando Barata Russo
Mikel Beitia Larranaga
Georges Bejjani
Karim Benaissa
Brice Berrard
Mykola Bezkrorny
Nitin Bhargava
Askold Birin
Lucia Blanco
Tom Blyweert
Milena Bowman
Alexander Bregman
Adrian Brown

Claudio Caballero
Jennifer Calubad Dy
Robin Card
Robert John Cazers
Muhammad Addaem Chandran
Antoine Chazelle
Yung Chai Chew
Anton Chilton
Kee Min Chin
Aditya Chitharanjan
Hyunwook Cho
Sarah Cooper
Sonny Wilkens Dahl
Grace David
Florent de Salaberry
Nathalie Donne
Isabelle Dresco
Konstantin Drozhdin
Matthew Dugaro
Jean Durand-Ruel
Sherif Elgemei
Wissam El Massih
Hannes Engelstaedter
Stephane Espagnet
Jonathan Fancher
Arndt Fauser
Pascal Ferrari
David Peter Forman
Jessica Fracassi Berrezaie
Benjamin Gajkowski
Julia Galina
Saskia Gentil
Amol Ghattargi
Miriam Yamina Ghomchi
Assma Ghsaibat
Alicia Sofia Gomez Puternicki
Gonzalo Gonzalez
Markus Graeber
Michel Grebenikof
Edouard Griveaud
Faiz Akbar Habib
Cynthia Haddad Abou Khater
Nordine Hadi
Julien Haure
Annabelle Helps
Matthias Max Hess
Christian Hill
Shiau Chuen Hng
Wilbur Ho
Philippe Hoeblich
Christina-Sibylle Hoferdt

Jonathan Howard
Xing Hu
Sung Ho Hyun
Imoh Alfred Idem
Sebastien Jacquet
Paul Janssen
Nicolas Jarrosson
Hady Jerdak
Boby Johnson
Damon Johnson
Joshva Martto Joseph
Jeyabalan
Dorejd Kastrati
Hirokazu Kato
Roohi Khan
Moustafa Khater
Elena Khisamova
Patrick Koller
Tadatsugu Konoike
Alexey Kononov
Denis Kurganskiy
Johan Woo Kvandal
Peter Georg Laube
Poh Seng Lee
Eric le Forestier
Jean-Christophe Le Guen
Mel Licker
Benjamin Toh Onn Ling
Linda Loh
Alex Loucks
Michael Lowe
Nadiya Lubnina
Tarun Mago
Ans Mahmood
Luidi Maia
Fritz Maier
Dmytro Makarenko
Ferry Malvinas
Jens Mani
Julien Martel
Marco Mauri
Gerard McHugh
Sophie McMurray
Emma Lucila Michahelles
Barreno
Guillaume Millereux
Steven Mintey
Boris Mirkin
Kim Moelholm
Daniel Monnet
David Pierre Francis
Montillet
Barbora Moring
Desire Mouanga-Biayenda
Nirmal Mull

Abdur-Raheem Mungrue
Anand Sethumadhavan
Nair
Mario Neves
Kok Seng Adam Ng
Lars Oestergaard Nielsen
Vladyslav Oliinyk
Andrea Orlando
Adrian Ow
Shubhojit Pal
Padmini Pandya
Bingxin Pang
Alejandra Pardo
David Perez de Albeniz
Emmanuel Pillai
Sören Plaugmann
Oleksii Pogorelov
Marie Bernard Poulin
Anup Rajan
Reshmi Rajendran
Mohana Radha Rajoo
Prashant Rampal
Hanzala Rangwala
Brock Reynolds
Racha Sahly
Gaurav Sanan
Leonard Sands
Romain Sarrut
Raphael Nicolas Schmid
Vantroost
Giancarlo Serafini
Yogesh Seth
Salman Mustafa Shah
Sachin Sharma
Madan Siva Prabhu
Randolph Xiyun Song
Puneet Sood
Boris Spassky
Boleslaw Stawicki
Miljana Stojanovic
Thejas Sudhir
Wei Sun
Lalit Suryawanshi
Steffen Syvertsen
Kaewta Tachamahachai
Han Wee Tan
Yaw Tan
Kenneth Tan
Devan Raja Sekhar
Tatavarthy
Colin Hoe Kiat Tay
Davis Thekkath
Jo Thompson
Mykhaylo Timonin
Seth Townsend

Marcelo Trimboli
Jean-Emmanuel Turquois
Sophie Van Dijk
Nicoline van Leersum
Rogier Theodoor Van
Willigen
Kartik Varma
Sivakumar Viswanathan
Daniel Weber
Sook Lin Wong
Hong Xiao
Umit Yaldiz
Najlaa Yassine
Jerome Wee Hong Yeo
Yasar Yilmaz
Yu Zheng
Mikhail Zotov

Tsinghua-INSEAD Executive MBA Class of 2017

Stefano Adami
Wai Man Cheng
Virak Chhuor
Wencui Du
Wei-sheng Duan
Fei Gao
Miguel Garcia Represa
Lai Gu
Tommy Hong
Yousef Hussein
Xufeng Jiang
Shu Jie Edwin Lim
Meng Liu
Jacobus Jan Martinus
Maasland
Yann Christian Paul
Marvin
Louise Poh
Riana Ramahandridona
Patrick Reijnders
Renaud Semin
Lingyun Cathy Shao
Danny Soh
Kai Strohbecke
Sabrinna Tang
Bianca Teti
Levenza Sui Chien Toh
Emmanuel Triomphe
Christophe Van Ngoc Ty
Edward Wang
Wang Hou Joseph
Andrew Wei
Daniel Chi Yan Wong

Lin Xu
Wen Zhang
Guanghua Zhou

Executive Master in Consulting and Coaching for Change '17

Riho Alas
Saud Alsulaiman
Ibtisam Al Riyami
Rafael Altavini
Beatrice Bähler Zensen
Violaine Beix Ginzburg
Una Blumberga
Regina Brand
Janine Chamberlin
Nancy Chen
Chye Hou Ching
Rafael D'Andrea
Johanna Daunan
Sarah Egan
Orly Eitan
Marco André Ferreira
da Silva
Nathalie Flandre
Lionel Frankfort
Luc Haegemans
Peter Harold
Felicia Henderson Kazuko
Hirata
Sirpa Ikola
Gang Ji
Cecilia Juhlin
Pinar Kalay
Himanshu Karla
Julius Koh
Florian Kraft
Welmoed Kronemeijer
Rohit Kumar
Tessa Lehman
Yuen Liang Lee
Evelyn MacLean
Adam Markus
Mette Matthiesen Devika
Mohanty
Hilton Nathanson
Miguel Nogueroles Martinez
Cathalijne Oudijk
Kerstin Press
Jon-Paul Pritchard
Fabio Rosé
David Sancho
Hendrik Schwartz

Naomi Sedney
Violetta Shatilova
Rainer Sichert
Alice Sieger
Ulli Silaba
Kok Sing Song
Afke-Anne Slager
Snjezana Spaijic
Bjorn Victor Svensson
Iffet Türken
Wouter van Essenberg
Tim Veil
Geert Vercaeren
Arpana Vidyarthi
Maria Constance Vieco
Anna Viegenger
Bala Vissa
Defne von Krogh
Marc André Wanderer
Shuhong Wang
Christiane Wenckheim
Andrea Wilke
Quan Yuan
Dennis Martin Zamora

Master in Finance Class of 2017

John Paul Antico
Bevis Chen
Joan Chen
Shameem Eshragi
Emre Goltepe
Zach Gostout
Jaewoo Jung
Dokyun Kim
Keith Kim
David Lam
Ethan Lim
Jing Lin
Raymond Liu
Cameron Mclean
Aslanbek Nachoev
Leif Nilsson
James Oberholzer
Maxim Ogarenko
Murat Oztop
Saloni Prasad
Merilyn Tassell
Adam Watson
Songjie Yeo
Yuri Yoshioka
Sean Zhang

Alliances and Partnerships

The Wharton School of the University of Pennsylvania in Philadelphia and San Francisco, CA, USA

MBA exchange programme
– launched in 2001

Tsinghua University school of Economics and Management, Beijing, China

Dual Executive MBA programme
– launched in 2006

Sorbonne Université, Paris France

INSEAD is a founding partner in the multidisciplinary
Sorbonne Université
– launched in 2012

Fundação Dom Cabral, Brazil

Executive Education programmes
– launched in 1990

Johns Hopkins School of Advanced International Studies (SAIS), Washington, D.C., USA

Dual Degree MA and MBA
– launched in 2011

Teachers College at Columbia University, New York City, USA

Dual Degree MA and MBA
– launched in 2014

Kellogg School of Management at Northwestern University, Illinois, USA

MBA exchange programme
– launched in 2010

China Europe International Business School (CEIBS), Shanghai, China

MBA exchange programme
– launched in 2013

Global Network for Advanced Management

One of 29 members to the Yale School of Management-founded alliance
– launched in 2012

Project Director

Axel Tagliavini

Editor

Maureen Murray

Writer

Elin Williams

Project Manager

Robert Loxham

Creative Agency

Perfect Day

perfectdaylondon.com

Principal Photography

Richard Davies

Printed on Heaven 42, an environmentally responsible paper manufactured using Elemental Chlorine Free (ECF) pulp sourced from certified, well managed forests. Heaven 42 is FSC Mixed Sources Chain of Custody (CoC) certified.

INSEAD