



2830 South Central Avenue  
Los Angeles, CA 90011-2037  
(323) 232-7653 • www.apch.org

NON PROFIT ORG.  
U.S. POSTAGE  
**PAID**  
LOS ANGELES, CA  
PERMIT NO. 30753

**SAVE THE DATE**  
December 7, 2011  
Gala for the Children  
The Beverly Wilshire  
Please join us! Call (323) 904-4400 for details

**APCH Calendar OF EVENTS**

| 2011                    | what   | when & where   | details   | get involved   |
|-------------------------|--|--|---|--|
| NOVEMBER 23             | Thanksgiving Community Dinner and Food Distribution    | APCH All day   | APCH opens its doors to the community providing healthy meals and fresh food to take home (including turkeys).  | Calling all volunteers. Please email volunteer@apch.org  |
| DECEMBER 2              | Tree Lighting Ceremony and Movie Night                 | APCH 5pm - 8pm   | Join us for our Tree Lighting Ceremony and stay for hot chocolate and Movie Night. Make sure to bring warm blankets for the whole family!                         | Bring an ornament and join the fun. Volunteers needed, please email volunteer@apch.org                           |
| DECEMBER 7              | APCH Gala for the Children                             | 6pm - 9pm The Beverly Wilshire                                 | Please join us for our biggest fundraiser of the year as we celebrate the success of APCH youth.  | For ticket and sponsorship information please contact Rebecca Mizrahi at 323-904-4400 or rebecca@grantevents.com |
| DECEMBER 13             | Christmas Holiday Toy, Book and Clothing Drive         | 8pm - Midnight Skybar 8440 West Sunset Blvd West Hollywood, CA | A hip and fun holiday party at one of the hottest spots in L.A. Admission: one \$20 toy or \$20!  | Visit www.apch.org for details   |
| DECEMBER 20             | Holiday Festival preparation                           | APCH   | Help us decorate the Center and sort toys, books and clothing to be distributed to South LA families  | Calling all volunteers. Please email volunteer@apch.org  |
| DECEMBER 21             | Holiday Festival and Gift Distribution                 | APCH   | A fun and festive day for hundreds of South Central families in need.   | To volunteer, email volunteer@apch.org   |
| DECEMBER 23 - JANUARY 2 | APCH Holiday Break                                     |  | APCH Closed to Members Center reopens Monday, January 2, 2012   |  |
| 2012                    | what   | when & where   | details   | get involved   |
| MARCH 14                | Stars & Strikes Celebrity Bowling and Poker Tournament | 6pm - Midnight PINZ in Studio City                             | This is the APCH Leadership Council's annual fundraising event. Celebrities and guests take to the lanes and poker tables for a nonstop night of fun for a cause! | For ticket and sponsorship information please contact Scott Culbertson at 323-232-7653 x238 or scott@apch.org    |
| MARCH 17 and 18         | Los Angeles Marathon and 5K Walk/Run                   | Morning start time TBD   | If crossing the finish line after running or walking 5K or 26.2 miles while helping APCH sounds like something you want to accomplish, let us sign you up!        | Please check our website or contact Scott Culbertson at 323-232-7653 x238 or scott@apch.org                      |
| APRIL 2-8               | APCH Spring Break                                      |  | APCH Closed to members. Center reopens on Monday, April 9, 2012   | Contact Jerry Rodriguez at 323-232-7653 ext 239 or jerry@apch.org if you have questions.                         |
| APRIL 27 and 28         | Cinderella and Prince Charming Project                 | APCH Hours TBD   | South Los Angeles teens learn about inner beauty and strength and outer generosity and go home with fabulous dresses and suits for Prom and Graduation.           | Donate dresses or suits Volunteer by contacting Gilbert Radillo at 323-232-7653 ext 233                          |
| MAY 5                   | Big Sunday (Even though it's Saturday)                 | APCH 10am - 4pm  | Calling skilled handy men and women to help beautify APCH. Volunteer today!   | Calling all volunteers. Please email volunteer@apch.org  |
| MAY 24                  | GirlPower Awards Luncheon and Boutique                 | 10am - 1:30pm Beverly Hills Hotel                              | This event raises funds for APCH GirlPower Project and other APCH programs that inspire inner-city youth.   | For ticket and sponsorship information please contact Rebecca Mizrahi at 323-904-440 or rebecca@grantevents.com  |

WANT TO LEARN MORE AND GET MORE INVOLVED? CALL TODAY TO JOIN ONE OF OUR MONTHLY TOURS AT APCH. (323) 232-7653 ext. 208

# HOME FROM FRONT



apch.org

The most valuable resource young people have is what's inside of them - that indomitable part of their spirit that wants health, harmony and happiness.

"Anyone from South Central can survive and succeed, you just have to work three times harder." So says Maynar, 17 years old.

Our job at APCH is to nurture that inner core and to help each member develop the strength, skills, tools and motivation to overcome obstacles.

APCH is a dynamic launching pad to an atmosphere where all things are possible, but there is a lot to do to prepare a young person for that moment of lift-off. As a multi-service organization, we approach the mission from many angles simultaneously. Early educational support for our youngest

members includes tutoring, homework help and literacy programs. At the other end of the age spectrum, we have a dropout recovery partnership with LAUSD, an SAT and higher education prep program, and a robust college scholarship program that sent 58 young women and men to college in September 2011; and we launched our vocational development program in 2011. Along the way, we provide young people with

**WHERE YOUNG PEOPLE DEVELOP THE MOST VALUABLE RESOURCE IN THE WORLD**

nourishment for the mind, body and spirit, including nutritious, fresh food and a connection with the earth in our garden; athletics and team sports; visual, dance, music and media arts programs; mental health and family counseling; and rites

of passage programs for the transition into adulthood.



PLEASE USE THE ENCLOSED DONATION CARD AND VISIT OUR WEBSITE TODAY FOR MORE INFO ON HOW TO MAKE A DIFFERENCE: [APCH.ORG](http://APCH.ORG)

FALL 2011

**OUR MISSION** A Place Called Home is a safe haven in South Central Los Angeles where underserved youth are empowered to take ownership of the quality and direction of their lives through programs in education, arts, and well-being; and are inspired to make a meaningful difference in their community and the world. **a place called home**

changing the world starts at home





### INSIGHTS FROM THE EXECUTIVE DIRECTOR

I will not die an un-lived life. I will not live in fear of falling or catching fire.  
I choose to inhabit my days, to allow my living to open me, to make me less afraid, more accessible;  
To loosen my heart until it becomes a wing, a torch, a promise.  
I choose to risk my significance, to live so that which came to me as seed goes to the next as blossom,  
And that which came to me as blossom, goes on as fruit.

~ Dawna Markova

In the coastal forests, giant redwoods, hundreds of years old, stand in circular groves whose roots are interwoven. When great winds come, or fire races through the forest, the trees hold each other up. So it is with people. Holding each other and working together, we are stronger and more resilient.

Every day at APCH, young people are learning to tap into their inner strengths and to develop vital life skills and tools for the future. With empowerment comes new possibility, new perspective and new courage to live life fully.

This year we launched APCH SHARES, an initiative that recognizes the youth and families of South Central L.A. as important resources for their community and for the world. APCH SHARES brings our members and staff together to make a positive impact through projects such as neighborhood clean-ups, L.A. River preservation projects, and the

sharing of artwork with children across the nation.

Storms of unemployment, poverty and crime have left South Central battered, but not broken. The neighborhood's young people need safety and support so they can enjoy healthy lives and develop into the leaders of tomorrow. At APCH, we are expanding our programs, and our young people are learning from the redwoods—if we stand in a circle and hold each other up, we can survive the storms and continue to grow toward the sky.

You, dear reader, can be a part of it by contributing your time, talent and treasure. Please consider getting involved as a volunteer, a partner, or a board member. It's a decision you will never regret.

Yours, in service to youth and families,

Jonathan Zeichner, Executive Director

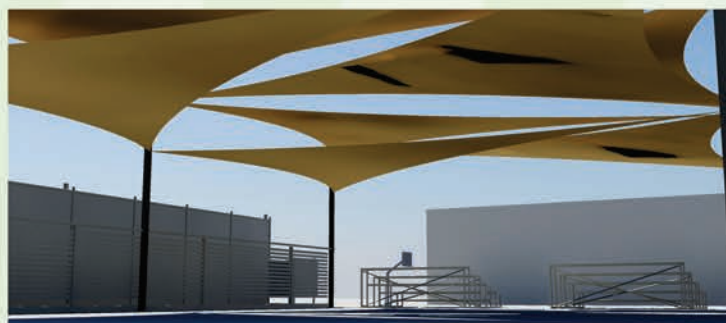


We love our work! We send appreciation and best wishes from all the staff at A Place Called Home.

Come meet Jonathan and Tarabu and all the friendly and dedicated staff at APCH – Call today to arrange a tour: (323) 232-7653 ext. 208

### WE'RE GONNA BE MADE IN THE SHADE

Things always heat up during the summer at APCH, but sometimes it gets so hot that the kids can't play outside on our athletic field. Thanks to the **Ahmanson Foundation** and **Teens in Action**, APCH will soon have a new shade structure and a water fountain! Now, that's cool!!!!



### DIRECTOR OF PROGRAMS

The past year was a roller coaster of program activity, transitions, expansions, infrastructure construction, visioning and goal setting. A Place Called Home is an agency that is never lacking in opportunity or ideas, requests for collaborations, or self-generated initiatives and it is one of the dynamics that makes this institution so alive and responsive to our community's needs. We wrapped up an amazing summer with attendance of over 300 daily-- members participating in classes, workshops, activities, and more than 80 field trips celebrating the music, dance and exciting milestones of the 20th century.

This year our program staff engaged in numerous strategic planning session to determine how we can better serve our members, families and the community at large over the next one to three years. We look forward to expanding our scholarship program, (this year we funded 58 students at colleges around the country through our Shaheen Scholarship program), and building a mentoring component to assist our members in gaining life and social competency skills. We also plan to continue the development of our new vocational development initiative, highlighted by our successful chef apprenticeship program with Patina Restaurant and Santee Educational Complex, and we will be launching intermediate and advanced Saturday classes to support progressive learning in several of our program departments. Most importantly we look forward to more extraordinary moments of talent, energy and passion to constantly remind us why this institution is so important. We invite our parents, friends and supporters to generously bring your ideas, energy, and resources and unite with us in this endeavor.

Tarabu Betserei Kirkland, Director of Programs

### HORSES IN THE HOOD - A MAGICAL GATEWAY



Where our kids walk to school, concrete and graffiti are the landscape. Where our kids play, violence and gangs are a part of daily life. Where our kids dream, opportunities are limited and the ability to express one's inner life is often stifled. A Place Called Home is a safe haven in South Central Los Angeles where underserved youth are empowered to take ownership of the quality and direction of their lives through programs in education, arts, and well-being; and are inspired to make a meaningful difference in their community and the world.

Over the past five years we have partnered with Horses in the Hood to help children broaden their horizons and give them life-changing experiences. **Kathy Kushner** and the Horses in the Hood staff have shown our kids, through week-long immersions in horse camp, that rid-

### OUR MIDSUMMER'S DREAM BECAME A REALITY



Summer at APCH is always amazing. Summer 2011 was off the hook! 86 field trips (!!!) and a plethora of enrichment classes exposed hundreds of APCH summer members to decades of history, art, and culture. No, we didn't have a time machine, but our summer theme was "Decades." From the end of June to the end of August, our members explored the music, art, politics, culture, food, fashion and technology of the twentieth century. It was a gas, man! (a colloquial expression from the 1960's).

Among our many field trips: a weeklong surf camp, where members learned the fundamentals of riding the waves. Other standout watery field trips included boating, sailing and fishing, with a journey to Catalina Island sponsored by board member, Marshall Wax. Members visited USC's Catalina campus, went snorkeling and got to interact with sea creatures they had never even seen before.

Each week we had an amazing culminating event. Through dynamic performances, art shows and media presentations, our departments spurred each other on and demonstrated collaborative creativity. During 60's week, our Education Services department inspired all the kids to advocate for what you believe in, as they learned about the politics of the era and how Americans fought for peace and justice. And then, there's the simple joy of rocking out together, which we did week after week as we explored dances of the 20th Century, from the Waltz, to the Jitterbug to the Electric Slide, inevitably leading to everyone jumping on board the Sooooooooo!!!! Traaaaaaiiiiiinnnn! It was a summer to remember! Now, what will be the theme next year, we wonder....

ing, grooming and loving horses can provide a magical experience.

A scenic drive on PCH starts and finishes each day – what a change of scenery! But, the real magic begins when the van arrives at Mill Creek Stable. Greeted by a warm and friendly staff, our youngsters meet their new four-legged friends. Lifelong memories are formed, courage grows, and teamwork and deep sensitivity for the horses emerges. Of course there are challenges and spills but no one ever leaves defeated.

The kids talk about the horses on the way home each afternoon, and run to the stables to greet the horses each morning. By the end of a week at Horse Camp, kids are helping each other groom their horses, socializing with instructors and building bonds with each other and new confidence that lasts back at APCH and out in the community.

"I like putting the saddle on my horse and trotting. It is really fun. Next year, I'm going to bring my mom too!" says **Zacara Moseley**, age 9.

At the end of the week there is a lot of proud showing of ribbons and horseshoes back at APCH!

At APCH we hold closure circles at the end of the day – it's, a time when our members get to express their feelings. At the end of the summer, **Michelle Aguilar**, 16, said, "Horses in the Hood was the best trip all summer. Some kids even fell off of their horses but were brave and got right back on. It was so cool!"

One more way APCH is expanding possibilities so our young people can ride into a beautiful and broad horizon...



## STEPPING UP!



The dance department welcomed a very special guest visit in June. **Ashlyne Huff**, an up and coming pop artist and dancer, stopped by the studio on her nationwide tour to inspire, teach and give young dancers an opportunity to participate in a video in support of her new album. Ashlyne wanted to give our aspiring performers a window into the real world of a committed artist. It was an afternoon of friendly competition where our dancers were challenged with new combinations and had to step up to present themselves in a professional light. All the APCH dancers did a tremendous job and they were proud of themselves.

Two talented girls, **Nathaly Barcenas** and **LaShonda Washington**, were selected to be in the video. Nathaly, who is just 10 years old, burst into tears when her name was called. "It was so good and it was fun! Ashlyne was really nice and cute. I learned a lot!"

This summer, LaShonda transitioned from being a youth member to being a dance intern, and she feels that the experience with Ashlyne motivated her to really go after her dream. "It inspired me to want to become a better dancer. I had a great time. I've never done anything like that before."

Exposing young people to extraordinary opportunities is what we are all about!

## TEENS LISTEN, LOUNGE AND LEARN AT APCH



September 30th was an especially exciting day of music and fun at A Place Called Home. Our Music Department hosted a wonderful "Listening Lounge: Sound Session" event featuring 2101 Records Hip-Hop Rock fusion musical group **7Lions**. 7Lions spent the afternoon with APCH members and other community youth, sharing stories about the business of making music. The band performed selected tracks from their latest project, getting feedback from their young audience. This exchange between the youth and professionals was further enriched when APCH Alum and artist **Fernanda Gomez**, APCH Staff members **Charyn Harris** and **Joaquin Pacheco**, music industry professionals **Darryl Farmer**, **Benny Cassette**, **Corey Notes** and others added rich dimensions to the discussion. Youth were informed and encouraged to consider a number of career options related to the music industry.

Afterwards, our Bridge to the Future Department hosted another edition of APCH Teen Night, with music, dancing and fun, with hosting, DJ and sound engineering all handled by APCH members – special thanks to **Nate "the Great" Hughes**, **George "Bringdamarxz" Benitez** and **Amor Baeza**. It was great to see our teens applying everything they have learned at APCH in a real world event! Dozens of neighborhood youth enjoyed open mic performances and a set by independent artist **Karina Nistal**, with her Latin-injected R&B/Hip-Hop stylings. The whole evening was capped off with a line-dancing explosion! Can't wait for the next one!



ACCORDING TO LOS ANGELES POLICE DEPARTMENT STATISTICS, NEARLY HALF OF L.A.'S 60,000-80,000 GANG MEMBERS LIVE IN SOUTH CENTRAL; MOST ARE 15 - 18 YEARS OLD, BUT SOME ARE AS YOUNG AS NINE YEARS OLD.

## EDUCATIONAL SERVICES – HELPING KIDS MAKE THE GRADE



riosity to learn. One of our goals in the Educational Services Department is to nurture and, in some cases, revive the curiosity and love of learning in all our members. After school, our members love to participate in the other APCH departments such as Dance, Art, Music, Nutrition, and Fitness. In the Educational Services Department we also take a creative approach, but our focus is on our members' academic growth.

This fall, our members who require extra academic support will enroll in either Academic Focus A or Academic Focus B. They will be assessed by our staff and with our new software to identify their specific areas of need. Educational Services staff will lead interactive, hands-on activities in small groups and, with the assistance of interns and volunteers, will guide our members through the process of learning and strengthening new skills. Homework assistance will be available to all who seek it and we will accommodate one on one tutoring sessions for our high school students who are preparing for higher education in just a few short years.

On Fridays, we offer a variety of classes for specific interests: Science Exploration, Poetry, a Book & Movie Club, Brain Teasers, and Forgotten Heroes.

As part of a vital, multi-service center, we embrace our role as a partner with 15 neighborhood schools and we are committed to working with them to provide exemplary service to our members and to accomplish our vision of youth empowered and inspired through education.

Our thanks go out to so many for the support, the books, the volunteer tutoring – we couldn't do it without you!

Thanks to the generosity of so many of you, the Educational Services Department at APCH is being transformed physically from the ground up; with a new beautiful floor, cooler, softer lighting, and pleasing colors, textures and sounds, we are creating a more nurturing and enriching learning environment for our members.

Learning is a lifetime adventure and all children are born with the cu-

## BRIDGE TO THE FUTURE – OUR FIRST JOB READINESS TRAINING



**Stefon Ginn** and **Rosalba Lopez Galindo**.

Over five weeks, participants developed skills to get a job and stay employed. Training focused on creating a mindset within participants of what it means to be a professional. Training topics included:

- Employee rights
- How to fill out a job application
- What should be on a resume
- How to professionally and successfully navigate the job interview process
- Expected professional behavior at one's job site
- How behavior outside of one's professional environment can affect their employment
- ...and much, much more!

The training consisted of instructor presentations, interactive activities and culminating mock interviews. Students prepared resumes, wore appropriate professional attire and used their newly acquired skills and confidence to successfully navigate their interviews.

"I learned that if I set my mind to it, I can accomplish many things," explained Rosalba Lopez Galindo. "I learned not to mix up the personal and the professional. You should keep your social life out of your job." Stefon Ginn stated that, "Success is not just going to come to you. Having a job can help you succeed in your future and in your life. Also, you should never engage in office politics!"

Several of the workshop graduates went on to find employment over the summer and went back to school with new perspectives and ideas for what they want to do with their futures.

For ten years our mission has included providing pathways to higher education and now APCH has committed to integrating a vocational development program for our youth. From the end of March to the beginning of April 2011, **Noreen McClendon** of Concerned Citizens of South Central joined APCH to facilitate job-readiness workshops for our teen members. The dozen young people that participated included Patina Restaurant apprenticeship applicants **Vanessa Gutierrez**, **Patricia Ochoa** and **Daniel Rodriguez**, as well as APCH member interns

EDUCATION IS FOR IMPROVING THE LIVES OF OTHERS AND FOR LEAVING YOUR COMMUNITY AND WORLD BETTER THAN YOU FOUND IT.

~ MARIAN WRIGHT EDELMAN



## APCH SHAHEEN COLLEGE SCHOLARS SPEAK UP

### THE YEAR EVERYTHING CHANGED

By Alex Ramirez



Growing up, I was always encouraged by my parents to go to college. But, no one in my family had ever gone to college so there was no role model to follow. Now that I am a student at the University of California, Berkeley, and experiencing the life of a college student, I understand just how different one's life becomes. The main challenge I faced during my first year was experiencing how different Berkeley was from my former life. I had a hard time keeping up with the fast paced classes, the amount of responsibility that came from living alone, and

dealing with the fact that I was far away from home. It all felt too drastic.

Life as a college student was difficult for me to adapt to, but the perks have made it worth the difficulty. In the short time I have been a college student I have been exposed to many new experiences and opportunities. I had the privilege to be the first one in my family to ever visit the East Coast, meet and befriend people from different countries, begin the process of learning a third language, and begin training in martial arts. I would have never experienced any of these if I had stayed back home.

Becoming a Berkeley student was not a walk in the park. Coming from a low-income family, my parents told me they were not going to be able to fund my education and that I might have to go to community college. Hearing this made my world crumble. But thanks to the APCH Shaheen Scholarship, higher education became a reality and I am living in a new world. Thank you APCH and the Shaheen Scholarship!

.....  
challenging and I was scared. I didn't feel prepared. I felt out of place and didn't feel smart enough to be there.

With time, though, I learned new things about myself as a student and as a future leader in my community of South Central. I learned that I was just as smart as everyone else and that there was a place for me there. I knew that I had to work twice as hard and that the challenges I faced were different from most others. Although I still worry about tuition and books every quarter I know that there is one place out there that will always help me.

A Place Called Home and the people there who helped me have been simply irreplaceable during my struggle. They still are the support that allows me to keep fighting and pushing. Simply put, I could have never survived this experience without the help of A Place Called Home and the staff there. At APCH, I found people who reminded me that the reason I was there was because I was as capable of succeeding as everyone else. If it was not for APCH, I would not be a third year Political Science Major who one day will be someone who changes lives, as well. I know who I am.

.....  
continuing fight for civil rights.

In the ensuing sessions, I realized the struggle, particularly in the area of voters' rights, was not just one of the past. We were educated on the use of tactics such as Gerrymandering and voter identification requirements to limit the voting power of minorities nationwide. While overwhelmed at times, I was reassured by the tenacity of the Youth and College Division, whose conversations spilled out into hallways well after discussion panels, and who encouraged me that our generation was eager to meet these issues with practical solutions.

If my experience at the NAACP's National Convention taught me anything, it is that I, too, have been called to stand up for civil rights in my community. With the continuing support of the APCH Shaheen Scholarship and the wonderful staff at A Place Called Home, I have been equipped to do so with my studies in broadcast journalism at San Francisco State. Now, with a greater knowledge of those who came before me, and a better understanding of what lies ahead, I am committed to fighting for a brighter tomorrow.

"While both humanization and dehumanization are real alternatives, only the first is the people's vocation. This vocation is constantly negated, yet it is affirmed by that very negation." ~ Paulo Freire

### THE JOURNEY

By Daniel Villa



My name is Daniel Villa, and I'm a working class Chicano from the part of the city formally known as South Central Los Angeles. I've been on this journey for 23 years, and have kept a constant dialogue with those that I've come in contact with and the world around me. On this quest I realized that making a difference and serving the community transcends any metaphysical conclusion about the meaning to live. Both

our lives and the world are fragmented, and there's a need for empathy rather than sympathy in our solutions.

It has been my decision and actions that have brought me here, but it wasn't because I pulled myself up by own bootstraps. It was because I had guidance and support while facing adversity. It hurt when my father and teachers told me I would never amount to anything in life. I'd argue they did that because they were prescribing me with a role instead of allowing me to find one on my own. Nevertheless, inside A Place Called Home the staff and my peers believed in me, and whatever problem I posed to them I had someone to analyze and break it down with.

My consciousness was awakened in a youth social leadership program by my peers who all shared their social biographies. In these critical faith sessions we reflected and dialogued about the social, historical, spiritual, economical, and political aspects of current events in the world, and our lives. "Why?" was the question used to fuel discussion. "Why do Samoans feel that the only way out of economic hardship is through military service or sports?" Michael James (the program director and facilitator) asked. That statement wasn't only true about Samoans. At the time I was contemplating joining the Marines, as my way out of South Central Los Angeles. We traced this question back to World War I and World War II, and the first colonization of Samoa by the Germans. We discussed the importance of the Islands to the US during the war, and my Samoan peers shared with us family stories related to the wars. Colonization was one thing that we all had in common. This class was the crucial event in my life that solidified that our lives are not static. The past has shaped the present, and it is we who shape the future.

I'm grateful that I will be able to continue my education at the University of Southern California, none of which would have been possible without the support of the APCH Shaheen Scholarship. We face many symptoms of social issues, and treating a symptom will never fix the root problem. Through research, practice, and the help of the community my goal is to begin to find real solutions to some of these issues (e.g., education and financial literacy).

### A PROMISE TO MYSELF

By Guadalupe Marin



The day I set foot at UCLA was probably the most amazing day of my life. I was filled with confusion, excitement, and pride. However, within the first month, I found myself struggling emotionally, academically and financially. I learned that my old high school had not prepared me and I had a lot of catching up to do. Aside from that, I was undocumented and paying for tuition would be an even greater challenge. The decision to leave UCLA was heartbreaking, but I vowed I would go back. I took classes at East Los Angeles College and began working small jobs here and there to save money to fulfill my promise to myself.

This past spring quarter was my first quarter back at UCLA since fall 2009. Walking around campus for the first couple of weeks was a little

### A BRIGHTER TOMORROW

By Chanelle Ignant



I knew little about the NAACP before attending its National Convention this past July. While I had read about its many legal victories during the civil rights era, I was unaware of its present endeavors. Sitting in the first mass meeting, however, I knew I was in the presence of greatness. Not because of the powerful conviction of the Association's president, Roslyn M. Brock, who, in her opening address, charged that

"courage will not skip this generation", or by the encouraging words from figures like Governor Jerry Brown, Representative Maxine Waters and others. Instead, I was inspired by the passionate audience, some of whom had traveled from across the country to share their voices in the

## THE APCH SHAHEEN SCHOLARSHIP

MORE THAN 150 TWO-YEAR AND FOUR-YEAR SCHOLARSHIPS AWARDED!

10  
YEARS



DAVID AND LINDA SHAHEEN JOINED APCH IN AWARDED 58 COLLEGE SCHOLARSHIPS THIS YEAR!

TALENTS ARE BEST NURTURED IN SOLITUDE, BUT CHARACTER IS BEST FORMED IN THE STORMY BILLOWS OF THE WORLD.  
~ GOETHE

75% OF ADULTS IN THE CENTRAL-ALAMEDA AND HISTORIC SOUTH-CENTRAL NEIGHBORHOODS  
HAVE NOT ATTAINED A HIGH SCHOOL DIPLOMA.



## THE APCH CINDERELLA PROJECT - IT'S ALL ABOUT INNER BEAUTY



True Beauty resonates from the soul, rising to the surface through words of truth, acts of kindness and sincere smiles. True Beauty is not confined to an idealized set of physical traits, it manifests in a spectrum of shades, shapes, personalities and lifestyles. The APCH Cinderella Project invites young women to think of their beauty beyond skin deep – our invitation is for girls and women to love themselves in a way that nourishes and shines from the inside out!

In the classic fairytale of Cinderella, a young girl is transitioning into a woman, but her circumstances and the jealousy of others tell her she is not as beautiful as the rest- not worthy because she doesn't look like her sisters who are all made up and dressed in the most expensive clothing and jewels. But, through Cinderella's commitment to be true to her heart and to be helpful and giving, she is ultimately seen for her true beauty and she discovers something that riches can't buy: True Beauty transcends all negative circumstances and makes the world a better place for everyone.

This past May, the APCH Cinderella Project 2011 focused on conveying the concept of inner beauty to 928 girls. Yes, the young ladies received dresses, shoes, accessories, and perfume for their upcoming proms and graduations, all the elements to dress up the outside, but the girls also received tips, guidance and opportunities for developing their inner beauty.

The young ladies learned practices to boost self-confidence and inner growth and insure that on their special night (and beyond), they can be true to themselves and good to others. They were even encouraged to sign up to volunteer at APCH or some other community center. Outward beauty will fade with time. True Beauty just gets better and better.

**In 2012 we will be adding Prince Charming to the event!  
To donate dresses and suits, contact: [gilbert@apch.org](mailto:gilbert@apch.org).**

### HOW THE MAGIC BEGAN

11 years ago, **Dana Green** had a plan to help underprivileged young women sparkle and shine at their proms and graduations. Dana's vision has spread near and far, as Cinderella Projects and events like it can be found in many different states around prom time. The partnership with APCH has served thousands of girls in South Central and beyond, and now, with Dana's blessing, we are taking it to a whole new level of meaning and impact.

Cinderella Project 2012 will have a whole new look, and we are adding The Prince Charming Project to allow young men to receive donated suits so they can accompany their prom and graduation dates in style. To match our inner beauty theme for the girls, we are providing workshops and speakers to focus on inner strength and ways to "be a man" that are all about using masculine strength to help others. Our beautiful princesses and princes will be supported in developing mutual respect and finding ways to give back and make their marks in the world.

In addition to donations of dresses, shoes, jewelry and men's suits, we are looking for just the right corporate and small business sponsors. Please email [gilbert@apch.org](mailto:gilbert@apch.org) for more information or to get involved.

*"I started the Cinderella Project as a way to give back to the young women of our community. Hopefully the young women who are this year's beneficiaries will in turn give back to the community in some way." ~ Cinderella Project Creator, Dana Green*

TODAY YOU ARE YOU, THAT IS TRUER THAN TRUE. THERE IS NO ONE ALIVE THAT IS YOUER THAN YOU.  
~ DR. SEUSS

## GIRLPOWER PROJECT 2011 TAKES IT TO A WHOLE NEW LEVEL

GirlPower 2011 had 14 girls enrolled, and it was inspiring to see them find their voices and develop their self respect and the respect of everyone around them. One of the important lessons they focused on was about respecting other people's opinions and agreeing to disagree sometimes. The value of really seeing each other as individuals with different perspectives brought major breakthroughs in their circle of sisterhood.

GirlPower this year also placed an emphasis on volunteerism in the South L.A. community and at APCH. The girls participated in many different service projects, including a Los Angeles River Clean-up, The Children Mending Arts Project, where they made t-shirts and backpacks for the children of Haiti and Japan, and the APCH Cinderella Project, where the GP Girls helped more than 900 other young ladies choose free dresses and accessories for their proms and graduations.

Young people need help with identifying who they are inside. This year GirlPower became all about giving back to the community and taking a leadership role in helping others. Through developing inner

beauty and strength, the GP Girls began to define new roles for themselves in life. They began to express themselves and open up to each other in a new way that allowed for deeper understanding and appreciation.

At the GirlPower Awards Luncheon last May, the Girls shared the stage with our peerless host, **Shondrella Avery**, and five very accomplished honorees; journalist Laura Ling, fashion pioneer **Pamela Skaist-Levy**, Councilwoman **Jan Perry**, author **Katherine Schwarzenegger**, and Guru Mommy **Linda Meadow**. In front of several hundred guests, our Girls gave voice to their dreams and aspirations, named their heroes, and declared what GirlPower means to them. Weeks and months of training in life skills, self-esteem, decision making, time management, etiquette, public speaking, college and career preparation, and community awareness came together in an instant and the Girls walked off that stage differently than they had walked onto it. The world needs empowered women more than ever – and here they come!



DON'T LIMIT YOURSELF. YOU CAN GO AS FAR AS YOUR MIND LETS YOU. WHAT YOU BELIEVE, YOU CAN ACHIEVE.  
~ MARY KAY ASH



## WHAT WE DO AT A PLACE CALLED HOME

**1. BACK TO SCHOOL GIVEAWAY 2011**  
YOUTH AND FAMILIES RECEIVE FOOD, CLOTHING AND NEEDED SUPPLIES ALL YEAR ROUND.

**2. APCH IDOL 2011**  
WE PROVIDE OPPORTUNITIES EVERY DAY TO EXCEL AND SUCCEED!

**3. ANNUAL KIDS DAY**  
WE WRAP EACH SUMMER WITH KIDS DAY AT APCH - IT'S A BLAST!

**4. BASKETBALL**  
APCH MEMBERS PLAY HARD AND HAVE FUN IN THE BASKETBALL LEAGUE.

**8. MUSIC DEPARTMENT**  
STUDENTS WHO EXCEL AND SHOW DEDICATION IN OUR MUSIC DEPARTMENT OFTEN RECEIVE AN INSTRUMENT OF THEIR VERY OWN.

**9. A DAY WITHOUT ART...**  
DOES NOT EXIST AT APCH!

**10. GIRLPOWER**  
THE GIRLPOWER PROJECT "AFTER" THEIR MAKEOVER AT THE SOFTSHEEN ROOTS OF NATURE EVENT.

**11. CINDERELLA PROJECT**  
OUR ANNUAL CINDERELLA PROJECT PROMOTES INNER AND OUTER BEAUTY FOR HUNDREDS OF GIRLS FROM ACROSS L.A.

**15. COMPUTER CLASSES**  
KIDS ARE BEING PREPARED FOR THE 21ST CENTURY EVERY DAY.

**16. ADOPT-A-FAMILY**  
OUR ADOPT-A-FAMILY PROGRAM HELPS WITH FOOD, CLOTHING AND HOUSEHOLD NEEDS YEAR-ROUND, ESPECIALLY AT THE HOLIDAYS. YOU CAN HELP!

**17. MOVIN' IT!**  
WE HAVE TWO DANCE COMPANIES - AND THEY BOTH ROCK!



**5. MORNING YOGA**  
SUMMER INCLUDES YOGA CLASSES EVERY MORNING FOR DOZENS OF CURIOUS KIDS.

**6. SHAHEEN SCHOLARSHIP INTERVIEWS**  
APCH IS COMMITTED TO PROVIDING COLLEGE OPPORTUNITIES TO YOUTH WHO MIGHT OTHERWISE NEVER HAVE THEM.

**7. NORTHERN CALIFORNIA COLLEGE TOUR**  
IN ADDITION TO EXPLORING COLLEGE OPPORTUNITIES ON PAPER, OUR MEMBERS GET TO VISIT SOME OF THE SCHOOLS THEY'RE INTERESTED IN.

**12. SURF CAMP**  
SUMMER FUN AT SURF CAMP. HAPCH MEMBERS LEARN TO RIDE THE CURL!

**13. AEW HPROGRAM**  
OUR ALTERNATIVE EDUCATION WORK CENTER/ DROPOUT RECOVERY PARTNERSHIP WITH LAUSD SERVES 100+ STUDENTS EVERY YEAR.

**14. L.A. 5K MARATHON**  
EVERY MARCH APCH MEMBERS AND STAFF RUN THE L.A. 5K - PLEASE JOIN US!

**18. APCH THANKSGIVING**  
EVERY YEAR APCH SERVES MORE THAN 1,000 THANKSGIVING DINNERS TO OUR COMMUNITY. COME VOLUNTEER!

**19. EDUCATIONAL SERVICES 2**  
IF YOU NEED HELP WITH HOMEWORK, APCH IS THE PLACE TO BE EVERY DAY!

**20. GARDEN**  
THE APCH GARDEN IS THRIVING. KIDS LOVE TO HELP AND WATCH IT GROW.

**21. SOCCER**  
APCH MEMBERS PLAY HARD AND HAVE FUN IN THE SOCCER LEAGUE.

Valeria

It means sweet, blissful, jubilant

IT'S THE COLOR OF THE ROSE, SUN, & GRASS

It is the number 3  
It is Tlacayos!

It is the memory of Jennifer  
Who taught me HONESTY  
When she gave me a "COCO"

My Name is Valeria  
It means I believe  
in finishing school.

### DULCE QUIÑCENERA

por Maria Flores 6/10/11

Dulce Quiñcenera  
Mente de niña  
Con cuerpo casi de mujer  
Trapada entre mundos inexplicable  
Entre el futuro y el pasado  
Como saber la que pensando  
Diferente estilos para cada niña  
Diferente mundos de que explorar  
Diferente formas de mirar la vida  
en cada dimensión  
Poco a poco asiendo se mujer  
Poco a poco dejando su niñees

Con el tiempo cerrando cada puerta  
Nomas ce quedara una advierta  
Por eso Dulce Quiñcenera sigue soñando  
lo mas gue puedas  
Disfruta ser niña antes que ce te  
sieren las puertas

I'd like to fly fast  
But I only have  
one wing  
Together we fly

~ Daniel Martinez

### SWEET FIFTEEN YEAR OLD

by Maria Flores 6/10/11

Sweet Fifteen year old  
Mind of a child  
body almost grown

Trapped in different unexplainable worlds  
In the present and future  
Who can say what she thinks  
Different styles for every girl  
Different world to explore  
Different ways to see life in every dimension  
Little by little becoming a woman  
Little by little leaving the child she is  
With time closing the doors  
just leaving a single one open

That's why sweet Fifteen year old, dream all you can  
Enjoy being a child before your doors close

## THE APCH FAMILY IS GROWING!

APCH is overjoyed to welcome some new additions to our ever growing family. We are thankful for these beautiful gifts and for the wonderful people who support APCH and contribute to making this an awesome place for our members.



APCH Leadership Council Co-Chair, Jonathan and Brooke Hodge, and sister, Amalia welcome Elsie Lauren Hodge, Born May 7, 2011



APCH Leadership Council member, Jennifer Koster and her Dad welcome Tristan Alexander Koster, Born July 20, 2011



APCH Athletics Supervisor, Jeremiah Cockheran and Tamara Limasa welcome Zia Joy Emiko Cockheran, Born July 14, 2011



# CHANGING THE WORLD

## STARTS AT HOME

### CHANGING APCH STARTS WITH YOU



On Saturday morning, June 25, 2011, our first-ever Stakeholder Circle met at APCH. There were parents, members of different ages, interns, volunteers, our executive director, staff members and an APCH Board member. The goal was to convene a representative spectrum of those who care and are most affected by what happens at APCH, to get caught up on current events, share concerns, needs, desires and visions of “what can be” at APCH, and to come away with recommendations for APCH leadership to consider as we move forward – how can APCH be even better?

Each stakeholder shared a story about the place APCH has in his/her life. There were stories of change and pain, of challenge and hope, and of love and healing. We laughed and cried together, like families do, and then we got down to business.

Participants were invited to co-vision about the future – what APCH programs need to be strengthened and added to better serve members? Highlights included:

- Create a Charter school so kids can attend all day
- Create a Teen Center that focuses on real teen issues and provides more mentoring

- Add computer classes for parents
- Add a Theater Program
- Build a Gymnasium
- Increase counseling services for the community
- Provide support groups for victims of violence

Executive Director, Jonathan Zeichner conveyed all of this to the APCH Board of Directors, and we are already pursuing some of the priorities!

Interested in getting involved? Let us know at [info@apch.org](mailto:info@apch.org).



#### THANK YOU TO THE STAKEHOLDER CIRCLE PARTICIPANTS

- |   |                            |                        |
|---|----------------------------|------------------------|
| Yvonne Styles – Director of Counseling Services | Julie Pilat – Board Member | Jefferey Ginn – Parent |
| Jeremiah Cockheran – Athletic Supervisor        | Katia Tellez – Volunteer   | Stefon Ginn – Member   |
| Lupe Ramos Silva – Director of Development      | Keith Hatcher – Volunteer  | Lupe Marin – Member    |
|   | Ivette Quijas – Intern     |                        |
|   | Marisa Prude – Parent      |                        |
|   | Shonda Michael – Parent    |                        |

### YOUNG PROFESSIONALS HAVE FUN AND MAKE A DIFFERENCE AT APCH

The **A Place Called Home Leadership Council** was established in 2007 to include young professionals and artists in the fundraising and strategic planning for APCH. Members of the LC learn about board development and have a voice in the long term direction of the organization. Two LC members, **Doug Atchison** and **Julie Pilat** have gone on to join the APCH Executive Board, with Doug currently helming the Board as chairman.

“Stars and Strikes” is the Leadership Council’s signature bowling and poker fundraising event, held every March (next edition, March 14, 2012: please visit [apch.org](http://apch.org) for details). For 2011, the Leadership Council has developed another great event, “A Place Called Home for the Holidays Festival” including a Toy, Book and Clothing Drive that will distribute holiday gifts to 2,000 families in South Central. LC fundraising and friendraising events welcome early career professionals who want to have fun and discover the fulfillment making a positive difference in

the world. Attendees have a grand time and often choose to become LC members and/or volunteers at APCH. Says **Jonathan Hodge**, Vice President of Investments at UBS and Co-Chair of the Leadership Council, “When we see the smiling faces of the kids and the commitment of the APCH staff, it provides us with a sense of purpose and a reason for being involved with the Leadership Council. Adds Co-Chair, **Debbie Cerrito**, Account Executive at Clear Channel Communications, “Oftentimes we are caught up in building our careers, which is great, but APCH gives us the opportunity to step back and realize there is a bigger purpose to our everyday lives.”

Would YOU like to learn more about the APCH leadership Council? Please email [info@apch.org](mailto:info@apch.org) with your inquiry and we’ll get back to you!



NEVER DOUBT THAT A SMALL GROUP OF THOUGHTFUL, COMMITTED CITIZENS CAN CHANGE THE WORLD; INDEED IT IS THE ONLY THING THAT EVER HAS.  
~ MARGARET MEAD

### APCH WELCOMES TWO NEW BOARD MEMBERS

Serving on the Board of Directors for A Place Called Home requires a significant commitment of time, energy and resources. We are pleased to announce the inclusion of two new members, bringing our total board number to 22 dedicated individuals from many different backgrounds, professions and life histories, all unified to support A Place Called Home in its mission to sustain, nurture and improve the lives of youth and families in South Central Los Angeles.



**Dawn Taubin** is one of the most highly regarded executives in entertainment marketing. After a 19-year career in marketing at Warner Bros. Pictures, Taubin recently started her own company, Cinema Vision, and she is a Professor of Public Relations and Advertising at the Dodge College of Film and Media Arts at Chapman University in Orange, CA. Dawn has volunteered at APCH for years, and in 2007 she was honored at our annual APCH Gala for the Children. Dawn and her whole family have stayed involved, and Dawn says, “Being a part of A Place Called Home has been very important to our family. We’ve made a difference, and it has changed our lives and made us aware of the community around us.” Now, Dawn is on the

Board and has stepped into the role of Co-Chair of the 2011 Gala. Welcome, Dawn, we are thrilled to have you!



As the Senior Vice President of Worldwide Marketing and TV & Studio Licensing at Warner Bros. Consumer Products, **Maryellen Zarakas** is responsible for identifying, developing and executing marketing priorities, strategy, and plans for all WB properties worldwide.

One of her favorite quotes is from Thomas Edison: “The greatest invention in the world is the mind of a child.” As someone in the entertainment field who is fortunate enough to have been exposed to music, dance, art, etc., Maryellen says, “It is my responsibility to bring these incredible experiences to others, and especially to children—to contribute to their lives by giving them access to creating a healthy, balanced and personally fulfilling life. I cannot think of a better way to make that happen than through the wonders of this amazing APCH community.”

Interested in getting involved at a Board of Directors level? Please email our Executive Director at: [jonathan@apch.org](mailto:jonathan@apch.org).

### APCH FAMILY MOVIE NIGHTS PROVIDE A COMMUNITY EXPERIENCE



There is something magical about a summer night, picnic blankets spread on the ground, and the smell of popcorn breezing through the air. The lights go down, the music comes up, and right there in the middle of South Central L.A., 300-400 people are transported on a journey together that makes them happy and brings them closer together. Moms and dads get a rare date night, the kids get to play, or sit and watch safely, or snuggle under a family blanket.

In a neighborhood with no movie theaters, APCH provides free family film screenings -- no cussing, no bloody gun battles, just lots of laughs and great stories that offer a respite from the intrusive real sounds of sirens and helicopters that too often permeate the neighborhood.

The experience of watching a great movie outside with friends and

neighbors feels like a wonderful adventure and we love providing it throughout the spring and summer. In the winter, we partner up with All People’s Christian Center and bring our equipment over to their gymnasium, where it fills up, too.

Thanks, **Warner Bros.**, for supporting us in providing these simple, memorable, pleasurable nights for the kids and families of South Central. We look forward to many, many sequels.



YOUNG PEOPLE CROSSED OUR THRESHOLD 55,000 TIMES THIS PAST YEAR. WE SAW 1,300 UNDUPLICATED MEMBERS AND THOUSANDS MORE FAMILIES AND COMMUNITY MEMBERS AT SCREENINGS, FOOD AND CLOTHING GIVEAWAYS AND COMMUNITY EVENTS.



## BOWLING AND POKER FOR THE CAUSE!



STARS & STRIKES - DEFINITELY A **FUn**DRAISER TO REMEMBER!

600 celebrities and guests took to the lanes and poker tables for a jampacked night of fun to celebrate and support A Place Called Home's 5th Annual Stars & Strikes Celebrity Bowling & Poker Tournament. The dedication and long hours put in by APCH Leadership Council superstars **Zach Abo, Sixx Carter, Debbie Cerrito, Danielle Djansezian, Liz Hernandez, Jonathan Hodge, Jennifer Koster, Alex Larson, Julie Pilat, Mallory Portillo, Lori Rischer, Louie Rubio, Maggie Venneri and Karimah Westbrook** paid off as they raised more than \$100,000 for A Place Called Home.

From **Miley Cyrus and Cody Simpson** to **Cee Lo Green, RedOne** and **Howie Mandel**, the stars were there in force. "Not only were the kids having a blast but you could tell people were passionate about contributing to such a great cause," said LA Galaxy forward **Bryan Jordan**, who grew up near South Central LA. "Everyone was happy to see kids with smiles on their faces and I was glad to have the opportunity to be involved."

We want to especially thank Whole Foods Market for donating fresh, healthy and delicious hors d'oeuvres and dinner. No fun bowling on an empty stomach!

**SAVE THE DATE FOR STARS & STRIKES 2012: MARCH 14, AT PINZI!**

Check our website often for opportunities to attend Stars & Strikes, the GirlPower Awards, our Gala, and many other exciting fund and friend-raisers for APCH!

## GIRLPOWER AWARDS LUNCHEON CELEBRATES WOMEN WHO SHINE AND SUPPORTS SPECIAL INITIATIVES FOR YOUNG WOMEN AT APCH

Thank you to the honorees, event chairwomen, the GirlPower Awards Luncheon planning committee and everyone who attended the 2011 APCH GirlPower Awards Luncheon at the Beverly Hills Hotel last May. Honorees **Laura Ling, Linda Meadow, Katherine Schwarzenegger** and **Pamela Skaist-Levy** made a dynamic group and we were thrilled to bestow a very special honor, the 2011 GirlPower Legacy Award, on Councilwoman **Jan Perry**. Longtime supporter and powerful girl,

**Shondrella Avery**, emceed this very special event.

The event raises funds for the APCH GirlPower Project and other innovative programs that inspire inner-city youth to discover the strength of their minds and spirits, while teaching them life skills that will empower them to transition into healthy, productive adults.

**SAVE THE DATE: GIRLPOWER 2012 AWARDS LUNCHEON, MAY 24**



I HAVE FOUND THAT AMONG ITS OTHER BENEFITS, GIVING LIBERATES THE SOUL OF THE GIVER.  
~ MAYA ANGELOU

## FOR ONE NIGHT EACH YEAR THE FANCIEST BALLROOM IN TOWN IS TRANSFORMED INTO A PLACE CALLED HOME!

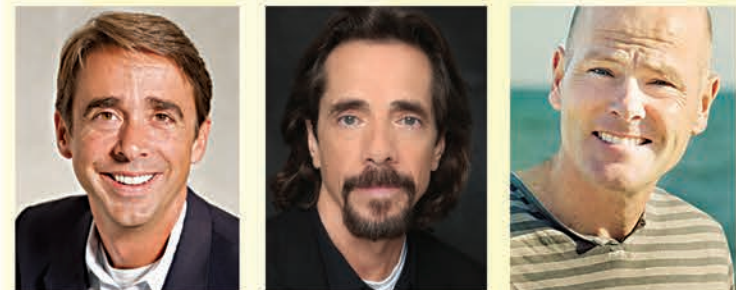


APCH's 2010 Gala for the Children honored **Serge Azria, Andrew Kosove, Broderick Johnson and Stephen Winston** – four amazing people who genuinely make a difference. But, the youth of A Place Called Home were the real stars of the evening. Our Youth Ambassadors warmly welcomed guests, and the APCH dancers and band put on an out-

standing show! Over the course of the evening APCH families, members and alums touched the hearts of all with stories about how APCH has helped them face adversity and build up their lives. The Gala raised more than \$900,000 dollars to support the programs 17,000 young people since 1993 and we're still going strong!



EXECUTIVE DIRECTOR JONATHAN ZEICHNER, 2010 HONOREE SERGE AZRIA, 2010 HONOREE BRODERICK JOHNSON, BOARD DIRECTOR AND 2010 HONOREE STEVE WINSTON, 2010 HONOREE ANDREW KOSOVE, BOARD CHAIR DOUG ATCHISON



On December 7, 2011 at the Beverly Wilshire, we are thrilled to be honoring CEO of Walden Media, **Michael Bostick**; Executive Vice President of Marketing, Motion Pictures, Walt Disney Studios, **Frank Chiochi**; and Partner at Latham & Watkins and longtime APCH Board member, **Peter Gilhuly**. Each of our honorees embraces the mission of APCH and shares a passion to ensure that the youth of South Central Los Angeles not only succeed, but soar and go on to make a difference in the world. It's going to be another great evening full of hope, promise, fun and surprises. Please join us!

For tickets, tables, or just more information, please call our event coordinator, Rebecca Mizrahi at Grant Associates, at 323-904-4400 or visit our website: [apch.org](http://apch.org). **Save the Date! December 7, 2011**

SAVE THE DATE!

# GALA FOR THE CHILDREN 2011

DECEMBER 7, 2011  
The Beverly Wilshire

THROUGH OUR FUNDRAISERS, INDIVIDUALS LIKE YOU CONTRIBUTE MORE THAN 1/3 OF OUR ANNUAL BUDGET.  
THANK YOU!!!



# THANK YOU TO ALL OUR DONORS FROM THE PAST YEAR, WE COULDN'T DO IT WITHOUT YOU!

OUR DEEPEST APPRECIATION GOES OUT TO THE DEDICATED INDIVIDUALS ON THE BOARD OF DIRECTORS OF A PLACE CALLED HOME, WHO TOGETHER GIVE AND RAISE MORE THAN A MILLION DOLLARS EACH YEAR

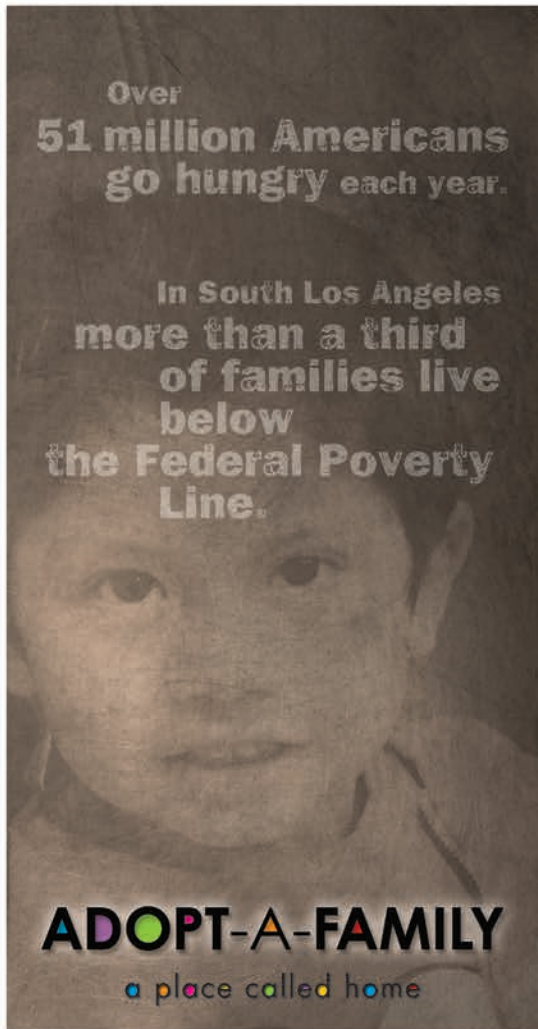
|  |  |  |  |  |  |  |   |
|--|--|--|--|--|--|--|---|
| Doug Atchison<br>Florence Azria<br>Robyn M. Browning<br>Sister Patricia Connor, RSHM<br>Debrah Constance, Founder<br>Peter M. Gilhuly, ESQ   | Jill Goldman<br>Cyrus Hadidi<br>Louise Hamagami<br>Ann Irmas<br>Robert Israel<br>Hannah Cox Ligouri  | Julie Pilat<br>Howard Sherwood<br>Stephanie Sherwood<br>Dawn Taubin<br>Bob Thompson<br>Jill Van  | Stephen R. Winston<br>Marshall Wax<br>Maryellen Zarakas  |  |  |  |   |
| <b>COMMUNITY BUILDERS PLATINUM   \$100,000 +</b><br>College Access Foundation of California<br>Mark Hughes Foundation  | Ralph M. Parsons Foundation<br>Faith Strong<br>The 2010 Faith Charitable Trust   | The David & Linda Shaheen Foundation<br>The Faith Family Trust<br>U.S. Department of Justice   | Weingart Foundation  |  |  |  |   |
| <b>COMMUNITY BUILDERS GOLD   \$50,000 - \$99,999</b><br>Florence and Serge Azria<br>Dwight Stuart Youth Fund   | Herbalife Family Foundation<br>Joie Dutch, LLC<br>Religious of the Sacred Heart of Mary  | Joseph Sherwood<br>The Audrey Irmas Foundation for Social Justice<br>Warner Bros. Entertainment, Inc.  |  |  |  |  |   |
| <b>COMMUNITY BUILDERS SILVER   \$25,000 - \$49,999</b><br>2101 Foundation/RedOne<br>Finish Line Youth Foundation<br>Guess Foundation<br>Michelle and Cyrus Hadidi  | Beth and Kenneth Karmin<br>Loeb & Loeb LLP<br>Nancy and Bruce Newberg<br>The Ahmanson Foundation<br>The Davidow Charitable Fund  | The Green Foundation<br>The Sharon D. Lund Foundation<br>Thelma Pearl Howard Foundation<br>Thomas and Dorothy Leavy Foundation<br>Toyota Financial Services  | Transformation Trust<br>Kathy and Marshall Wax<br>Jan and Stephen Winston  |  |  |  |   |
| <b>CAPACITY BUILDERS   \$10,000 - \$24,999</b><br>Alcon Entertainment<br>Anonymous (aggregate)<br>Bank of America Charitable Foundation<br>California Consumer Protection Foundation<br>California Foundation<br>For Stronger Communities/Foundation Boys<br>Carrie Estelle Doheny Foundation<br>Credit Suisse Employee Giving Program<br>Pam Dawber<br>Discovery Communications         | Donald T. Sterling Charitable Foundation<br>Estate of Jeane R. Mallet<br>George Hoag Family Foundation<br>Namhee and Peter Gilhuly<br>Marc Shmuger and Louise Hamagami<br>Herbalife International Of America Inc<br>Howard and Stephanie Sherwood Family Foundation<br>Bob and Gail Israel and Family<br>J.B & Emily Van Nuy's Charities<br>Kenneth T. and Eileen L. Norris Foundation<br>L.A. Lakers Youth Foundation | LA84<br>Latham & Watkins<br>Pamela Skait Levy<br>Sherwood Family Foundation<br>Diana Singleton<br>Morgan Stanley<br>Summit Entertainment<br>Target Corporation<br>Dawn and Mitch Taubin<br>Teens in Action<br>The Apatow Family Foundation   | The Carol and James Collins Foundation<br>The Harold & Mimi Steinberg Charitable Trust<br>The Jay and Rose Phillips Family Foundation<br>The Rite Aid Foundation<br>The Ryan and Genevieve Tedder Foundation<br>U. S. Bank<br>Joan and Chuck Waggener<br>William Morris Agency, LLC  |  |  |  |   |
| <b>DEDICATED SUPPORTERS \$5,000 - \$9,999</b><br>Alpert & Alpert Iron & Metal Inc<br>Anschutz Film Group/<br>Walden Media<br>BCBGMAXAZRIGROUP,INC.<br>Bimbo Bakeries USA/<br>Perspectiva, Inc.   | Carl E. Wynn Foundation<br>Charles David of California<br>CIT Group<br>Creative Artists Agency<br>Carol and Moise Emquies<br>Richard Foes<br>Fox Group<br>Ariadne Getty<br>Nancy and Jonathan Glaser   | Anthony Goldschmidt<br>Lukas Gottwald<br>Harvey and Lillian Silbert<br>Foundation<br>Betsee Iseberg<br>James A. Doolittle<br>Foundation<br>John & Hilda Arnold<br>Foundation Inc.  | Klee Tuchin Bogdanoff & Stern LLP<br>L & N Andreas Foundation<br>Yvonne and Jason Lee<br>Hannah Ligouri<br>Albert Liwika<br>Jamie and Eloise Lynton<br>The Annenberg Foundation<br>Susan Monus   | Jeff and Audra Nathanson<br>New Heights<br>Entertainment, LLC<br>Nu Image/Millennium Films<br>Open Road Entertainment<br>Pasadena Showcase House<br>for the Arts<br>RedOne Productions, LLC<br>Reed Business Information   | Ruth Allen Ziegler<br>Foundation<br>V. David Shaheen<br>Howard and Stephanie<br>Sherwood<br>SoftSheen-Carson<br>State Street Foundation<br>The Annenberg Foundation<br>The Bell Family   | Trailer Park, Inc.<br>Union Bank Foundation<br>Universal Studios<br>Robert Wass<br>WME   |   |
| <b>TRUE BELIEVERS \$2,500 - \$4,999</b><br>AT&T United Way Employee Giving Campaign<br>Steve and Colleen Bellitti<br>Michael Bostick<br>Robyn Browning   | Buchalter Family Trust<br>Mark Burg<br>Coca-Cola Refreshment<br>Coldwell Banker<br>Residential Brokerage<br>Community Foundation<br>Matthew Cooper   | Craig Realty Group<br>Citadel, LLC<br>Bert and Leslie Deixler<br>El Entertainment, LLC<br>Richard Feldman<br>Adena and Bill Frank<br>Robert Fresco   | GE Foundation<br>Daniel Goff<br>Jonah Goodhart<br>Tom Grane<br>Mary James<br>Broderick Johnson<br>Elaine Kramer  | Norman Lapin<br>Glen Lewy<br>Jazzyn Liggins<br>Los Angeles Neighborhood<br>Initiative<br>Frank McKernan<br>Cray Meadow   | Christina Norman<br>David Perren<br>Julie Pilat<br>Pinnacle Entertainment<br>Arnold Schwarzenegger<br>The Ant Farm<br>The D'Addario Foundation   | for the Performing Arts<br>The Ella Fitzgerald<br>Charitable Foundation<br>Transamerica Life Insurance<br>Company<br>Vogue<br>Mark Warnick   | Warner Music Group<br>Services<br>Raymond Wurwand   |
| <b>INVESTORS \$1,000 - \$2,499</b><br>10 Eleven<br>Lori and Paul Abramowitz<br>Alan Abramson<br>Laurence Abramson<br>Richard Appel<br>Dalia and Doug Atchison<br>Victor Azria<br>Anne Barnett<br>Bessemer Trust<br>Tom Bouquet<br>Derek and Lynette Brown<br>Gae Buckley<br>California Lutheran<br>University<br>Charles Carrillo<br>Jonna Carlis<br>City National Bank<br>Clear Channel | Comerica Bank-California<br>Courtcall, LLC<br>Craig Murray<br>Productions, LLC<br>Diana Davidow<br>Robert Davidow<br>Baron Davis<br>Teresa DeRogatis<br>Disney ABC Television Group<br>Grace Hill Media<br>Gina Greblo<br>Michael Greenfield<br>Robert Greenwald<br>Groupe MK<br>Natalie Hadidi<br>Daniel Fellman<br>Financo<br>Gavin Frank<br>Gisela Friedman<br>Sid Ganis  | Gregory Gelfan<br>Gelfand, Rennett &<br>Feldman LLP<br>John Kurbian<br>Steve Golob<br>Jonathan Gordon<br>Thyonne Gordon<br>Gotham Entertainment<br>Carolyn Govers<br>Grace Hill Media<br>Gina Greblo<br>Michael Greenfield<br>Robert Greenwald<br>Groupe MK<br>Natalie Hadidi<br>Happy Hour Creative<br>Susannah Henriksen<br>Brooke and Jonathan Hodge<br>Hopeless Records Sub City<br>Jessica's Outlet | Stephen Jones<br>Leslie Joseph<br>Kaiser Permanente<br>John Kurbian<br>Ketter Family Foundation<br>Sue Kroll<br>Ashok and Urmila<br>Kumar<br>L.A. Area Combined Federal<br>Campaign<br>Laemmle Theaters<br>Charitable Foundation<br>Deborah and Norman<br>S. Liebert<br>Laura Ling<br>Julie Lynch<br>Robert Mancini<br>Brenda Marsh<br>David Matalon<br>Peter Mathes | Robert McCarthy<br>McDonnell Investment<br>Management, LLC<br>Milken Family Foundation<br>MOJO, LLC<br>Momentous Insurance<br>Morton Capital<br>Moss Adams, LLC.<br>David Mumford<br>NBC Universal<br>Chris Nelson<br>Cynthia Newman<br>Nielsen NRG<br>Victoria Nourafachan<br>Laurent Opman<br>Elizabeth Padilla<br>Catherine Paura<br>Lou Pitt<br>Adam McKay and | Shira Piven<br>Roseanna Purzycki<br>Randolph Reiss<br>Resnick Family<br>Foundation, Inc.<br>Carlos Reynaldo<br>Robert and Anita Silverstein<br>Family Foundation<br>Moss Adams, LLC.<br>David Mumford<br>NBC Universal<br>Chris Nelson<br>Cynthia Newman<br>Nielsen NRG<br>Victoria Nourafachan<br>Laurent Opman<br>Elizabeth Padilla<br>Catherine Paura<br>Lou Pitt<br>Adam McKay and | Henry Shapiro<br>Henry Shields<br>Sky Bridge Capital<br>Lori Soroko<br>Charlene Sperber<br>Joachim Splichal<br>Lawrence Spungin<br>Squid & Squash Foundation<br>John Stalberg<br>Roger Stoker<br>The Angellotti Company<br>The Banchik Family<br>John and Janet Zar<br>Harriet Zaretsky<br>Fischer, Gilbert-Lurie, | Campaign<br>Union Bank of California,<br>N.A.<br>United Talent Agency, Inc.<br>University of Southern<br>California<br>Margaret Venneri<br>John Stalberg<br>Barton Wald<br>Wells Fargo Foundation<br>Bert Winston<br>Steve Zap<br>John and Janet Zar<br>Harriet Zaretsky<br>Fischer, Gilbert-Lurie, |
| <b>SPONSORS \$500 - \$999</b><br>Raul Aguilar<br>Allan H. Liebert & Sandra<br>Foundation<br>Charisse Anderson<br>Anderson Moulding LLC<br>Atlantic Express<br>Bank of America United Way<br>Campaign<br>Daniel & Lori Bath<br>Bemis Balkind<br>Mervyn Bernet<br>Jack Bernstein<br>Borrowed Bling   | John Dolan<br>James Burgess<br>Valerie and William Carrick<br>Debbie Cerrito<br>Edison International<br>Employee Contributions<br>Campaign<br>Mark Ciardi<br>Emily Faith Collection<br>Lisa Esparger<br>Susan Feldman<br>Richard Cummings<br>Dangerbird Records LLC<br>Joan Friedman<br>Brian Davidoff<br>Chris Davis<br>Clifford Dermham<br>Susan Dietz   | Marshall and Heather Glen<br>Vicki Gold<br>Lori Goldklang Furie<br>Howard Gordon<br>Grant, Tami, Barash &<br>Altman, Inc.<br>Karen Grossman Furie<br>Karen Haas<br>Clive Hoffman<br>Jon Huddle<br>Robert and Ruth Mirvis<br>Ron Moler<br>Trevor and Margaret Neilson<br>Kristi Nelson<br>Quincy Newell<br>Barbara Glazer   | Lapolt Law P. C.<br>Scott Levine<br>Karen Locke<br>Janet Lonner<br>Rob and Sheryl Lowe<br>Nena Madonia<br>Delphine Mann<br>Mary and Steve Meadow<br>Jon Meigs<br>Kelly Meyer<br>Robert and Ruth Mirvis<br>Ron Moler<br>Trevor and Margaret Neilson<br>Kristi Nelson<br>Quincy Newell<br>Barbara Glazer   | Barbara Overland<br>Patrick Purcell<br>Mark Rabkin<br>Ron Rapoport<br>Rosee Reese<br>Nena Madonia<br>Delphine Mann<br>Mary and Steve Meadow<br>Jon Meigs<br>Kelly Meyer<br>Robert and Ruth Mirvis<br>Ron Moler<br>Trevor and Margaret Neilson<br>Kristi Nelson<br>Quincy Newell<br>Barbara Glazer  | Studio Tim Campbell, LLC<br>Karen Sulzberger<br>Sunnyboy<br>Entertainment LLC<br>The Capital Group<br>Companies Charitable<br>Foundation<br>The Classy Bag Lady<br>The Edmund C. Olson Family<br>Foundation<br>The Jeffrey A. Dritelley and<br>Sandra Nafziger Fund<br>The Refinery<br>The San Genaro<br>Foundation<br>The Treasured Accessory   | Three Day Rule, Inc.<br>UBS Employee Giving<br>Program<br>United Way California<br>Capital Region<br>Stacy Valner<br>Kim Vamos<br>Susan Vinci<br>Tracy Williams<br>Winard Enterprises LTD<br>Jim and Maddie Zimring  |   |

HAVE YOU INCLUDED APCH IN YOUR ESTATE PLAN?

|   |   |  |   |  |   |   |  |  |  |
|---|---|--|---|--|---|---|--|--|--|
| <b>FORWARD THINKERS \$250 - \$499</b><br>Raymond and Barbara Alpert<br>18th Street Arts<br>Center LADCA<br>David Abramowitz<br>Air Traffic Control<br>Education Fund Inc<br>Jeff Alperin<br>Sydney Azria<br>Michael Bateman<br>Andrea Baynes<br>Kiki Bean<br>Jennifer Bellah-   | Maguire<br>Natalie Bell-Whitaker<br>Tina Betserai<br>Kirkland<br>Howard Blitz<br>Michael Bowen<br>Steven Branson<br>Leza Gibbons<br>John Carls<br>Al Chelini<br>Danny Chinich<br>Claude D. Jolly<br>Missionary Circle<br>Iain Clayton<br>Coalition for  | Responsible<br>Community<br>Development<br>Sharon and Kairey<br>Kirkland<br>Comerstone<br>Research Inc.<br>Suzanne Coston<br>Ken Craig<br>Dorothy Curtis<br>JOEL DESSAULES<br>Martin and<br>Gerladine Dirks<br>William Eggars<br>Jeffrey Ellis<br>Bob and Sarah  | Engelman<br>Entertainment<br>Lighting Services<br>Mark Ferrus<br>Wilson Fisher<br>Kara Fox<br>John Frankenheimer<br>Charles Furst<br>Leza Gibbons<br>Marialuisa Horrell<br>Tani Ikeda<br>Joseph and Robin<br>Kanarek<br>Zach Katz<br>Keikico<br>Deborah Klar<br>Damon Knight  | Jeff and Wendy<br>Goldstein<br>Peter Grad<br>Monica Gravel<br>Laurie Groh<br>Bill Gus<br>Heal the Bay<br>Michelle Hessman<br>Mary Jo McCarty<br>Gilt City<br>Glassman Browning<br>Saltsman &<br>Jacobs Inc.<br>Vernon Goldschmid<br>Laurie Goldstein   | Ernest J. and<br>Nancy E. Krepelka<br>JW Lavacca<br>Elizabeth Owens<br>Claudette Lussier<br>Lea Marsh<br>Heidi Martel<br>Juliet Martzke<br>Mary Jo McCarty<br>Meschures,<br>Campaes,<br>Thompson,<br>Snyder &<br>Levin, LLP<br>Susan Miller<br>Tim Nolan  | Rachel Ortiz<br>Out of the Blue<br>Entertainment<br>Claudette Owens<br>Thomas Paris<br>Paso Fino Del<br>Mar Inc.<br>Marissa Peretz<br>Kevin Philip<br>Marc Pollack<br>Gilbert Radillo<br>Billy Ray<br>William Ray<br>Melissa Richardson   | Banks<br>Carla Roberts<br>Brenda Romano<br>Aimee Rosenblum<br>Jon Saffer<br>Chuck Samborsky<br>Rae Sanchini<br>Richard Schenkel<br>Self-Realization<br>Fellowship Church<br>David and Linda<br>Shaheen<br>John Shane<br>Colette Shelton<br>Brian Sirgutz<br>John Skelton   | Lawrence Snyder<br>Jeff Stacey<br>Wendy Stark<br>Monique Steeples,<br>Inc.<br>Keri Stevens<br>Jane Strouse<br>Elaine Sunoo<br>Patricia Supriana<br>David Tanner<br>Lila Tavakoli<br>TERUO<br>The Andrew and<br>Kathleen Basch<br>Family Fund<br>Leslie Tong  | Derrick Traylor<br>Mariana Van Zeller<br>Robert Waldorf<br>Steven and Susie<br>Wagner<br>Wells Fargo<br>Community<br>Support<br>Campaign<br>Richard Winnie<br>Marci Wiseman<br>Curtis Wong<br>Yankee Peddler, Inc.<br>Michael Ziering  |
| <b>SEED PLANTERS \$100 - \$249</b><br>Abbott Kinney<br>Festival<br>Association<br>Accessor Eyes<br>Charles Adelman<br>Sydell Albert<br>Stephanie Allen<br>Susan Andrews<br>AOL Corporate<br>Events<br>Justin Armstrong<br>Michael Atchison<br>Suzette Azanza<br>Stad Baldwin<br>Kessler<br>Howard Ballon<br>Marco Banuelos<br>Tony Banuelos<br>Joyce Barkin<br>Lawrence Barnett<br>Juan Barera<br>Patte Barry<br>Ulrich Batzdorf<br>Magdalena Bazua<br>BBDOR Pacific  | Francesca Beale<br>Ray Behr<br>James Belin<br>Shari Bender<br>Ty Bentli<br>Dorothy Bernet<br>Amy Blackman<br>Rich Blair<br>Julie Block<br>Karl Block<br>Kirk Bovill<br>Arla Bowers<br>James Brock<br>Adele Burke<br>Marvin Burns<br>Allison and Bill<br>Butler<br>Howard Ballon<br>Tony Banuelos<br>G.G Artist<br>Management<br>Monica Chamberlin<br>Eddie Galan<br>Kay Gallin<br>Louis Changchien<br>Susan Clark<br>Ellen Cockrill<br>Julie Cohen  | Wendy Cohen<br>Cristine Gillespie<br>Suzanne Cole<br>Lulu Collins<br>Marsha Converse<br>Stacy Cramer<br>Tina Crowe<br>Ethelia Danellis<br>Sebastian Davis<br>Hedley Davis Riesenon<br>Betty Defries<br>Sokhom Duch<br>Sharon Elster<br>Amanda Fairey<br>Marianne Fisher<br>Peter Ford<br>Roger Fox<br>Jim and Mary<br>Fredrick<br>Jeff Frymer<br>Russ Fukano<br>Eddie Galan<br>Kay Gallin<br>Mark Gander<br>Susan Clark<br>Ellen Cockrill<br>Julie Cohen   | Constru<br>Cristine Gillespie<br>Guy Goldschmidt<br>Richard Gonzalez<br>Mary Good<br>Barry and Tatiana<br>Carolyn Johnson<br>Natalie Jones<br>Lisa Kane<br>Jacob Kaplan<br>Lucas Keller<br>Sabin Khemlani<br>Adrian Grant<br>Ceelo Green<br>David Greenman<br>Adelle Gross<br>Allen Grossman<br>William Gubin<br>Harriet Guggenheim<br>Harold Haesche<br>Edward Handler<br>David Hanpeter<br>Susan Harbert<br>Andrea Hein<br>Liz Hernandez<br>Sean Horvath  | Margaret Howe<br>Ray Hughes<br>Lisa Irmas<br>Jim Irvin<br>Jayro Sales Co., Inc.<br>Andrew Jeffries<br>David Levinson<br>Claudia Lewis<br>Renee Lipp<br>Daniel Llewellyn<br>Nia Long<br>Jeaneane MacLean<br>Gary Marella<br>Alyson Marmur<br>Deborah Klein<br>Gary Krausz<br>Judy Kravitz<br>Kreik Construction<br>Alan & Cindra Radd<br>Lambda Theta Nu<br>Sorority<br>Jacqueline Landry<br>Alex Larson<br>Laurence A. Cook<br>and Marina<br>Gurevich<br>Marion Laurie   | Myriam Laverde<br>Susan Leader<br>Charlie Lee<br>Katie Leede<br>Benjamin Levin<br>Michael Levine<br>Alison Filgrim<br>Mel Nachman<br>Allan Nassau<br>Nativis Global Asset<br>Management, LP<br>Robert Natter<br>Ursula Neusom<br>Bryan Ney<br>Peter Nichols<br>Angela Nofsinger<br>Sophie Norman<br>Rick Nuhn<br>Occidental College<br>Charitable Fund<br>Selena McCurdy<br>Helen McDevitt<br>Jack McGregor<br>Laura McKernan<br>Shonda Michael<br>Donald Mirisch<br>Lisa Mirman<br>Jeffery Mirvis  | Keri Moore<br>Vahan Moosekian<br>Tamar Morrissey<br>David Mortimer<br>Stephen Perlof<br>Sandra Pilat<br>Alison Pilgrim<br>Howie Pivov<br>Renee Lipp<br>Daniel Llewellyn<br>Nia Long<br>Jeaneane MacLean<br>Gary Marella<br>Alyson Marmur<br>Deborah Klein<br>Gary Krausz<br>Judy Kravitz<br>Kreik Construction<br>Alan & Cindra Radd<br>Lambda Theta Nu<br>Sorority<br>Jacqueline Landry<br>Alex Larson<br>Laurence A. Cook<br>and Marina<br>Gurevich<br>Marion Laurie  | Brock G. Harris and<br>Jennifer Oundjian<br>B. David Owen<br>Matthew Palmer<br>Stephen Perlof<br>Sandra Pilat<br>Alison Pilgrim<br>Howie Pivov<br>Renee Lipp<br>Daniel Llewellyn<br>Nia Long<br>Jeaneane MacLean<br>Gary Marella<br>Alyson Marmur<br>Deborah Klein<br>Gary Krausz<br>Judy Kravitz<br>Kreik Construction<br>Alan & Cindra Radd<br>Lambda Theta Nu<br>Sorority<br>Jacqueline Landry<br>Alex Larson<br>Laurence A. Cook<br>and Marina<br>Gurevich<br>Marion Laurie  | Steven Romick<br>Margaret Rose<br>Teresa Rutledge-<br>Howe<br>Patti Sabel<br>Safety and Life<br>Support Training<br>Sonia Sahay<br>Torii Santos<br>David Sartoris<br>Arthur Schramm<br>Segall Nonprofit<br>Consulting<br>Tamara Sekoff<br>Lawrence Sherwood<br>Judith Shockley<br>Jeremy Scotte<br>Elaine Skiaist<br>Richard Smith<br>Carolyn Steffen<br>Daryl Offer<br>Joyce Roy<br>Louis Robio<br>Claudette Roche<br>Gerardo Rodriguez<br>Vicky and David<br>Rogers  | Carrie and Peter<br>Tilton<br>Jessica Tingley<br>Trist<br>William Tully<br>Trina Unzicker<br>UPDO Editorial<br>Sandy Wallace<br>Gina Viola Peake<br>Cecil Walker<br>Jill and John Walsh<br>Card Walters<br>Nancy Watson<br>Allison Wax<br>Carolyn Weigandt<br>Peter Weinberger<br>Jill Weindorf<br>Judith Weston<br>Kathy Williams<br>Bruce Wiseman<br>Perry Wong<br>Janet Woods<br>Allison Wright<br>Adam Yamaguchi<br>Vera Yell<br>Maryellen Zarakas<br>Kevin Zinger   |
| <b>GRASS ROOTS Up to \$99</b><br>Yamina Abea<br>John Aberle<br>Margaret Accossano<br>Lea Adams<br>Sandra Alfaro<br>Wolfgang Aichholz<br>Lori Aird<br>Katrina Alexy<br>John Anderson<br>Karen and Pedro<br>Aroyo<br>Amy Aukstikalis<br>Michelle Babbitt<br>Shannon Babick<br>Corazon Balingit<br>Karin Barker<br>Menen Basha<br>Kathryn Beck<br>Paul Bennie<br>Ellen Bergeron<br>Barry Berk<br>Keith Berman<br>Serena Birbaum<br>Esther Blitney<br>Ethel Blum<br>Michael Blum<br>Lois Bostwick<br>Eric Bowen<br>Edward Boyd<br>Hymen Bregar<br>Earl Briggs<br>Deborah Bronner<br>Lisa Brucato<br>Dagmar Buck | Vance Burberry<br>Anwar Burton<br>Gabrielle Burton<br>Grace Busby<br>Cassandra Calhoun<br>Carlos Camacho<br>Michael Camello<br>John Campbell<br>Gilda Canarias<br>Kristina Annas<br>Joyce Cannon<br>Benny Cassette<br>Janet Chesne<br>Monica Chinlund<br>Young Choi<br>John Coffi<br>Dean Clements<br>Jeremiah Cockheran<br>Karin Barker<br>Menen Basha<br>Kathryn Beck<br>Paul Bennie<br>Ellen Bergeron<br>Barry Berk<br>Keith Berman<br>Serena Birbaum<br>Esther Blitney<br>Ethel Blum<br>Michael Blum<br>Lois Bostwick<br>Eric Bowen<br>Edward Boyd<br>Hymen Bregar<br>Earl Briggs<br>Deborah Bronner<br>Lisa Brucato<br>Dagmar Buck | Amy Dietrich Mark<br>Joseph Diggs<br>Danielle Djansezian<br>Vasken Djansezian<br>Jacqueline Djedje<br>Douy Doninas<br>Charles Drum<br>Angela Dugan<br>Cassandra Duwe<br>Kristin Edmonds<br>Sheridan Enomoto<br>Arlene Epstein<br>Sara Erikson<br>Harry Escobar<br>Karen Fairbank<br>Janice Feinstein<br>Loraine Fetelson<br>Michael Fienberg<br>Anita Finkelstein<br>Gamilie Flanagan<br>Ibelle Fleming<br>Cara Haun<br>Robert Havens<br>Sarah Hendler<br>Modesta Hernandez<br>Jennifer Hill<br>Lindsay Horvath<br>Keith Ikenmoto<br>Candace Jackson<br>Josephine Locke<br>Natalia Lopez<br>Jess Lucio<br>Les Lucas<br>Lorna Lyon<br>Tom Maffei<br>Sondra Magness<br>Patrick Gilfillan<br>Jeffrey Glaser | Mark Glasser<br>Todd Glassman<br>Alexander Golick<br>Taylor Gonzales<br>Jennifer Gordon<br>Gary Gorman<br>Dana Green<br>Shirley Green<br>Janet Krause<br>Michelle Gruber<br>Ethel Gullette<br>Policarpo Gutierrez<br>Alicia Gutierrez<br>Melinda Haesche<br>Vanessa Hale<br>Basta Hany<br>Geneva Harris<br>Cathy Harris<br>Denise Hatteman<br>Cara Haun<br>Robert Havens<br>Sarah Hendler<br>Modesta Hernandez<br>Jennifer Hill<br>Lindsay Horvath<br>Keith Ikenmoto<br>Candace Jackson<br>Josephine Locke<br>Natalia Lopez<br>Jess Lucio<br>Les Lucas<br>Lorna Lyon<br>Tom Maffei<br>Sondra Magness<br>Patrick Gilfillan<br>Jeffrey Glaser | Edward Kandel<br>Carlyn Kessler<br>Shakti Khalsa<br>Raya King<br>Grace Kirchner<br>Ed Kish<br>Paul Koistinen<br>John Kraus<br>Janet Krause<br>Michelle Gruber<br>Ethel Gullette<br>Policarpo Gutierrez<br>Alicia Gutierrez<br>Melinda Haesche<br>Vanessa Hale<br>Basta Hany<br>Geneva Harris<br>Cathy Harris<br>Denise Hatteman<br>Cara Haun<br>Robert Havens<br>Sarah Hendler<br>Modesta Hernandez<br>Jennifer Hill<br>Lindsay Horvath<br>Keith Ikenmoto<br>Candace Jackson<br>Josephine Locke<br>Natalia Lopez<br>Jess Lucio<br>Les Lucas<br>Lorna Lyon<br>Tom Maffei<br>Sondra Magness<br>Patrick Gilfillan<br>Jeffrey Glaser | Lissa J. Marcus<br>Dorothy Markham<br>Marna Matson<br>Vila Mauro<br>Christopher May<br>Byard and Hilary<br>Maybank<br>Shannon Mayock<br>Muriel McClendon<br>Eric McMorrow<br>Traci McRobbie<br>Christina Meridian<br>Chits Mednik<br>Joshua Medlock<br>Edward Parker<br>Rebecca Pasternak<br>Nancy Paulikas<br>Michael Perkins<br>Robert Meth<br>Margrett Persley<br>Vicky Meyers<br>Jason Miller<br>Raha Lewis<br>Ernest Lightner<br>Roy Minayoshi<br>Sara Mitchell<br>Nancy Lillenthal<br>Kathryn Linethan<br>Suzy Lloyd<br>Johnston Lo<br>Josephine Locke<br>Natalia Lopez<br>Jess Lucio<br>Les Lucas<br>Lorna Lyon<br>Tom Maffei<br>Sondra Magness<br>Patrick Gilfillan<br>Jeffrey Glaser | Erin Natter<br>Cecile Neal-Peters<br>Cecile Negreiros<br>Susan Neiman<br>William Nelson<br>Autumn Skeeton<br>Donald Newman<br>Christine Nguyen<br>Myrna Odwak<br>Mary Oremam<br>Andrew Ortiz<br>William O'Sullivan<br>Palmer Addressing<br>and Mailing Co<br>Edward Parker<br>Rebecca Pasternak<br>Nancy Paulikas<br>Michael Perkins<br>Robert Meth<br>Margrett Persley<br>Vicky Meyers<br>Jason Miller<br>Raha Lewis<br>Ernest Lightner<br>Roy Minayoshi<br>Sara Mitchell<br>Nancy Lillenthal<br>Kathryn Linethan<br>Suzy Lloyd<br>Johnston Lo<br>Josephine Locke<br>Natalia Lopez<br>Jess Lucio<br>Les Lucas<br>Lorna Lyon<br>Tom Maffei<br>Sondra Magness<br>Patrick Gilfillan<br>Jeffrey Glaser | Sam Resnick<br>Jason Ricks<br>Justin Riley<br>Cleotilde Negreiros<br>Glenn Rivera<br>Christopher May<br>Byard and Hilary<br>Maybank<br>Shannon Mayock<br>Muriel McClendon<br>Eric McMorrow<br>Traci McRobbie<br>Christina Meridian<br>Chits Mednik<br>Joshua Medlock<br>Edward Parker<br>Rebecca Pasternak<br>Nancy Paulikas<br>Michael Perkins<br>Robert Meth<br>Margrett Persley<br>Vicky Meyers<br>Jason Miller<br>Raha Lewis<br>Ernest Lightner<br>Roy Minayoshi<br>Sara Mitchell<br>Nancy Lillenthal<br>Kathryn Linethan<br>Suzy Lloyd<br>Johnston Lo<br>Josephine Locke<br>Natalia Lopez<br>Jess Lucio<br>Les Lucas<br>Lorna Lyon<br>Tom Maffei<br>Sondra Magness<br>Patrick Gilfillan<br>Jeffrey Glaser | Janet Shaw<br>Karen Sherwood<br>Gene Siciliano<br>Richard Simonetti<br>Cynthia Singleton<br>Autumn Skeeton<br>Donald Newman<br>Christine Nguyen<br>Myrna Odwak<br>Mary Oremam<br>Andrew Ortiz<br>William O'Sullivan<br>Palmer Addressing<br>and Mailing Co<br>Edward Parker<br>Rebecca Pasternak<br>Nancy Paulikas<br>Michael Perkins<br>Robert Meth<br>Margrett Persley<br>Vicky Meyers<br>Jason Miller<br>Raha Lewis<br>Ernest Lightner<br>Roy Minayoshi<br>Sara Mitchell<br>Nancy Lillenthal<br>Kathryn Linethan<br>Suzy Lloyd<br>Johnston Lo<br>Josephine Locke<br>Natalia Lopez<br>Jess Lucio<br>Les Lucas<br>Lorna Lyon<br>Tom Maffei<br>Sondra Magness<br>Patrick Gilfillan<br>Jeffrey Glaser | Amanda Walk<br>Isabel and Bryce<br>Warner<br>Les Watkins<br>Brecha Webb<br>Donald Webber<br>Darlene Weider<br>John Weiran<br>Caroline Weingarten<br>James Welke<br>Nicole Wells<br>Karimah Westbrook<br>Dora Street<br>Ilene Sturrock<br>Candi Suchecki<br>Michael Suheiman<br>Stuart Sudha<br>Anne Sures<br>Hannah Swift<br>Jon Tamiyasu<br>Julie Ann Tan<br>David Tannenbaum<br>Dumilo Teresta<br>Brien Terranova<br>Alison Terrya<br>Pam Thomas<br>Virginia Thomas<br>Sheree Thompson<br>Malachi Throne<br>Barbara Thrush<br>David Trachtenberg<br>Shanna Trobetta<br>Gwen Urey<br>Aimie Vaughan<br>Glora Waldinger |
| <b>MOUNTAIN MOVERS</b><br>Julie Dutch, LLC<br>Bevly Hills Greater<br>Los Angeles<br>Furried Productions<br>Jakks Pacific Inc.<br>Latham & Watkins<br>One Kings Lane Inc.<br>Debbie Centio<br>Gusey   Schneider LLP<br>Island Del Jam<br>M.S. Group<br>L.A. Regional Food Bank<br>Francisco Letelier<br>Martin Agency<br>Dawn and Mark Ostroff<br>The Chicago School of<br>Professional<br>Psychology<br>Warner Bros. Consumer<br>Products<br>Marshall Wax<br>John Zeidner   | Dilip Parekh<br>P/O Rabbit<br>Famela Roberts<br>Shelter Partnership, Inc.<br>Los Angeles<br>Shenwood<br>Sony Corporation of<br>America<br>Sony Pictures<br>Entertainment<br>FedEx Ground<br>Flintridge Preparatory<br>School<br>Communications<br>Sunset Strip Business<br>Association<br>Teens in Action<br>The Outdoor Recreation<br>Group<br>Nalo Jones<br>Kaiser Permanente<br>Maryellen Kanoff<br>L.A. Unified School<br>District<br>LA Party Works<br>Environmental<br>Organization<br>Julia Brodsky<br>Lucca<br>Marymount High School<br>Mehmoosh Mojajali<br>Architect<br>Mary Miller<br>Naier<br>NBC Universal<br>Employees    | A Wish Come True<br>Eduardo Garcia<br>Yamina Abea<br>Lea Adams<br>Mariana Aguilas<br>Virginia Alarcon<br>Zoe Alexander<br>Liliana Andrade<br>Diane Nuzzolese<br>Greg Cowan<br>Staples Center<br>Melissa Amold<br>Lui Attanasi<br>Sabrina Ayala<br>Serge and Florence Azria<br>Aja Baker<br>Verita Barlow<br>Claudia Bartlett<br>Bel Air Investment<br>Advisors, LLC<br>Gigi Berry<br>Patricia Bessler<br>Walmar<br>Vivian Bowen<br>Melanie Bradford<br>Julia Brodsky<br>Lucca<br>Marymount High School<br>Mehmoosh Mojajali<br>Architect<br>Mary Miller<br>Naier<br>NBC Universal<br>Employees   | Gusko and Jeff Friedman<br>Eduardo Garcia<br>Elizabeth Garcia<br>Raguel Gomez<br>Deborah Charles<br>CLD Style House<br>Christine Olesie<br>Columbia Records<br>James Cones<br>Greg Cowan<br>Staples Center<br>Melissa Amold<br>Lui Attanasi<br>Sabrina Ayala<br>Serge and Florence Azria<br>Aja Baker<br>Verita Barlow<br>Claudia Bartlett<br>Bel Air Investment<br>Advisors, LLC<br>Gigi Berry<br>Patricia Bessler<br>Walmar<br>Vivian Bowen<br>Melanie Bradford<br>Julia Brodsky<br>Lucca<br>Marymount High School<br>Mehmoosh Mojajali<br>Architect<br>Mary Miller<br>Naier<br>NBC Universal<br>Employees                                | LA Health Care Plan<br>L.A. Shores<br>T.C. Ladd<br>Lambda Theta Nu<br>Sorority<br>Alex Larson<br>Live Offices of Epport,<br>Richman &<br>Robbins, LLP<br>Hannah Ligouri<br>Laura Ling<br>Live on Sunset<br>Aracely Orozco<br>Mark Osborne<br>Los Angeles<br>Philharmonic<br>Los Angeles Unified<br>School District AEWV<br>Los Angeles Women<br>In Music<br>Lynn Macarin-Mara<br>Rosana Machua<br>Paul Malbaum<br>Lana Petrucci<br>Angela Maldonado<br>Maria Manetta<br>Laparth Marigat<br>Luis Pizzi<br>Polaris Cosmetics<br>Carelly Pott<br>Janine Mendiaz<br>June Mikowski<br>Jordan Miller<br>Jessica Mojaro<br>Emily Mollo  | Sandra Murguia<br>Stephanie Myers<br>National Bookdeal<br>Association<br>Kristen Rodolfo<br>Ronnie Rockwell<br>Lety Rodriguez<br>Rose Rogers<br>Nike Swim<br>Diane Nuzzolese<br>Oakwood Temporary<br>Housing<br>Cara Ondre<br>Aracely Orozco<br>Mark Osborne<br>Los Angeles<br>Philharmonic<br>Los Angeles Unified<br>School District AEWV<br>Los Angeles Women<br>In Music<br>Lynn Macarin-Mara<br>Rosana Machua<br>Paul Malbaum<br>Lana Petrucci<br>Angela Maldonado<br>Maria Manetta<br>Laparth Marigat<br>Luis Pizzi<br>Polaris Cosmetics<br>Carelly Pott<br>Janine Mendiaz<br>June Mikowski<br>Jordan Miller<br>Jessica Mojaro<br>Emily Mollo  | WE LOVE YOU!<br>We're sorry if we overlooked you, misspelled or incorrectly listed your name. Please let us know and we will gladly correct our records for future newsletters.   |  |  |  |

WE'RE SORRY IF WE OVERLOOKED YOU, MISSPELLED OR INCORRECTLY LISTED YOUR NAME. PLEASE LET US KNOW AND WE WILL GLADLY CORRECT OUR RECORDS FOR FUTURE NEWSLETTERS.





**Support APCH member families and children with acute financial needs with contributions of clothing, household staples, toys and food.**

To enroll as an Adopt-a-Family Donor  
Please complete form and return by fax or mail.

**A Place Called Home**  
**Attn: Adopt-a-Family Case Manager**  
**2830 S. Central Ave.**  
**Los Angeles, CA 90011**  
**fax (323) 232-0139**

NAME: \_\_\_\_\_  
ADDRESS: \_\_\_\_\_  
PHONE: \_\_\_\_\_  
EMAIL: \_\_\_\_\_

**I would like to participate in:**

- HOPE (year round essentials)     Holiday Edition

**Please select size of recipient family and donation level you prefer:**

- 2 - 3 (up to \$250)                       4 - 5 (up to \$400)  
 6 - 7 (up to \$600)                       8 or more (up to \$800)

The amount you give is up to you. You may choose to adopt more than one family.

**JOIN THE APCH FAMILY - YOUR DONATION PROVIDES IMMEDIATE AND LONG-TERM SUPPORT TO YOUTH IN SOUTH CENTRAL LOS ANGELES**

**All APCH programs are free to the children and families we serve and any amount will make a difference! HERE ARE SOME APPROXIMATE COSTS FOR THE PROGRAMS WE PROVIDE:**

- Sports, Fitness, Yoga and Sportsmanship activities for a child for a month- \$23
- Professional Dance Instruction and equipment for a child for a month - \$50
- Mental Health Counseling for a youth who needs extra support for a month - \$82
- A month of Tutoring for five children who are struggling to keep up at school - \$175
- Snacks and meals for ten children for a month - \$320
- A Field Trip for 25 children - \$500
- Academic Guidance/College Prep for 15 teenagers for a month - \$1,200
- Tuition support for a young person who will be the first in his/her family to attend college - \$3,500-\$6,000

\$25     \$50     \$100     \$250     \$500     \$1,000     Other \$ \_\_\_\_\_  
 I want to Keep On Giving: Please make automatic monthly donations of: \$ \_\_\_\_\_ with my credit card.

Payment method:  Check     MasterCard     Visa     AmEx     discover  
(Please make check payable to **A Place Called Home**, 2830 South Central Ave, Los Angeles, CA 90011)

Name on credit card: \_\_\_\_\_ Card #: \_\_\_\_\_ Exp: \_\_\_\_ / \_\_\_\_ / \_\_\_\_  
Address: \_\_\_\_\_ City, State, Zip: \_\_\_\_\_  
Phone: \_\_\_\_\_ Email: \_\_\_\_\_

- Please make this gift in memory/honor of: \_\_\_\_\_  
 My company will make a matching gift, I have enclosed the form  
 Please do not include my name in any list of published donors  
 I am interested in naming APCH in my estate plan  
Please contact me at \_\_\_\_\_
- I am interested in contributing to the APCH Endowment  
Please contact me at \_\_\_\_\_  
 I am interested in volunteer opportunities at APCH  
Please contact me at \_\_\_\_\_  
 I am interested in learning more about serving on the Board of Directors or Leadership Council \_\_\_\_\_

**Changing The World Starts At Home THANK YOU FOR YOUR SUPPORT!**



**FROM DOUG ATCHISON, THE CHAIRMAN OF THE BOARD**

The challenges facing our young people have never been more acute. And the resources provided by A Place Called Home and its supporters have never been more necessary.

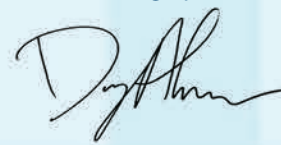
More Americans are hungry and without homes than in any other time since the Great Depression. Unemployment stubbornly remains at record highs. And 35% of Hispanic children and 39% of Black children now live below the poverty line. These statistics are amplified in the inner city where the threats of drugs and gang violence compound economic dangers.

A recent cover story in The Atlantic described how the American middle class is disappearing. But the article also detailed measures for rescuing today's young people from threadbare existences. Many of the prescribed remedies were ones APCH has been providing its members for years: educational support, vocational training, scholarships, and an environment of love, protection, and encouragement. APCH is a laboratory for developing new paths of success that must be forged if this country's inner city youth are to avoid lives of despair, imprisonment, or early death.

While other non-profits wither from lack of funding, APCH is growing and setting its sights on a more ambitious future. That is because our supporters recognize the profound and lasting change kindled in our members once they enter our doors and avail themselves of our broad menu of programs and services. Whenever I visit the center, I see for myself the very real progress happening in these kids' lives. They avoid the pitfalls so many of their peers encounter. By and large, children at APCH stay in school, stay out of trouble – and increasingly go on to college. Our members are not a drag on society – but are finding work and building families of their own.

APCH and agencies like it are the answer to the ills our communities and country face. Our government alone cannot solve our problems. Nor can we as individuals always make it by ourselves. Community centers like A Place Called Home bridge the gap between the public and private sectors by providing the essential tools at-risk kids need to succeed – and letting them know they are not alone in their struggle.

I thank you for your continued investment in this vital response to our community's challenges. Together we will help our young people overcome the perils of their environment and forge productive, prosperous, and charitable lives.



MEMBERS OF OUR BOARD, STANDING L TO R: PATRICIA CONNOR, JILL GOLDMAN, DOUG ATCHISON, ROBERT ISRAEL, JONATHAN HODGE, STEPHEN WINSTON, PETER GILHULY, DAWN TAUBIN AND MARSHALL WAX; SEATED: HOWARD SHERWOOD, MARYELLEN ZARAKAS, JONATHAN ZEICHNER, STEPHANIE SHERWOOD AND LOUISE HAMAGAMI

**THANKS TO OUR REMARKABLE VOLUNTEER BOARD OF DIRECTORS AND THE YOUNG PROFESSIONALS IN OUR LEADERSHIP COUNCIL**

**APCH Board of Directors**

- Doug Atchison**  
*Chairman*  
**Robert Israel**  
*Co-Vice Chairman*  
**Howard Sherwood**  
*Co-Vice Chairman*  
**Cyrus Hadidi**  
*Treasurer*  
**Stephanie Sherwood**  
*Secretary*  
**Debrah Constance**  
*Founder and President Emeritus*  
**Florence Azria**  
**Robyn M. Browning**  
**Sister Patricia Connor, RSHM**  
**Peter M. Gilhuly, ESQ.**  
**Jill Goldman**  
**Louise Hamagami**  
**Ann Irmas**  
**Hannah Cox Ligouri**  
**Julie Pilat**  
**Dawn Taubin**  
**Bob Thompson**  
**Jill Van**  
**Stephen R. Winston**  
**Marshall Wax**  
**Maryellen Zarakas**

**Lifetime Directors**

- Robert Davidow**  
**Kenneth Karmin**  
**Bruce Newberg**

**APCH Leadership Council**

- Debbie Cerrito**  
*Co-Chair*  
**Jonathan Hodge**  
*Co-Chair*  
**Danielle Djansezian**  
*Secretary*  
**Ty Benti**  
**Allison Crandall**  
**Liz Hernandez**  
**Jennifer Koster**  
**Alex Larson**  
**Lisa Masters**  
**Tamara Muzac, MBA**  
**Prophet**  
**Lori Rischer**  
**Louie Ribio**  
**Marshall Smith**  
**Maggie Venneri**  
**RVLDP Intern: Ashley Evans**

2830 South Central Avenue  
Los Angeles, CA 90011-2037  
(323) 232-7653 • www.apch.org