

KISS / SZENTÁGOTHAJ

ATLAS
OF
HUMAN ANATOMY

VOLUME THREE

ATLAS ANATOMIAE III.

ATLAS OF ANATOMY III

ATLAS ANATOMIAE CORPORIS HUMANI

COMPOSUERUNT

DR. MED. FRANCISCUS KISS
PROFESSOR EMERITUS UNIVERSITATIS
BUDAPEST

DR. MED. IOHANNES SZENTÁGOTHAJ
PROFESSOR PUBLICUS ORDINARIUS UNIVERSITATIS
BUDAPEST

TOMUS III.

SYSTEMA NERVOSUM · ANGIOLOGIA · ORGANA SENSUUM

EDITIO SEPTIMA DECIMA

AEDES PERGAMON
OXFORD · LONDON · NEW YORK · PARIS
MCMLXIV

ATLAS OF HUMAN ANATOMY

BY

FERENC KISS, M.D.
PROFESSOR EMERITUS OF ANATOMY
UNIVERSITY OF BUDAPEST

JÁNOS SZENTÁGOTAI, M.D.
PROFESSOR OF ANATOMY
UNIVERSITY OF BUDAPEST

VOLUME THREE

NERVOUS SYSTEM · ANGIOLOGY · SENSE ORGANS

SEVENTEENTH EDITION

PERGAMON PRESS
OXFORD · LONDON · NEW YORK · PARIS
1964

PERGAMON PRESS LTD.
Headington Hill Hall, Oxford
4 and 5 Fitzroy Square, London, W.1.

PERGAMON PRESS INC.
122, East 55th Street, New York 22, N.Y.

GAUTHIER-VILLARS ED.
55 Quai des Grands-Augustins, Paris, 6^e

PERGAMON PRESS G.m.b.H.
Kaiserstrasse 75, Frankfurt am Main

Distributed in the Western Hemisphere by
THE MACMILLAN COMPANY · NEW YORK
pursuant to a special arrangement with
Pergamon Press Limited

FIRST EDITION (Hungarian), volumes	I	1946
	II	1948
	III	1951
SECOND EDITION (Hungarian), volumes	I—II	1953
	III	1954
THIRD EDITION (German), volumes	I—III	1955
FOURTH EDITION (Hungarian), volumes	I—III	1959
FIFTH EDITION (Russian and Bulgarian), volumes	I—III	1959
SIXTH EDITION (Chinese), volumes	I—III	1959
SEVENTH EDITION (German), volumes	I—III	1960
EIGHTH EDITION (English), volumes	I—III	1960
NINTH EDITION (Russian), volumes	I—III	1960
TENTH EDITION (German), volumes	I—III	1961
ELEVENTH EDITION (Spanish), volumes	I—III	1962
TWELFTH EDITION (Russian), volumes	I—III	1962
THIRTEENTH EDITION (German), volumes	I—III	1962
FOURTEENTH EDITION (Czech), volumes	I—III	1963
FIFTEENTH EDITION (Russian), volumes	I—III	1963
SIXTEENTH EDITION (Hungarian), volumes	I—III	1963

In collaboration with

G.N.C. CRAWFORD
Department of Anatomy, University of Oxford
for this edition

and with
B. ZOLNAI, M.D. and I. MUNKÁCSI, M.D.
Department of Anatomy, University of Budapest

© Akadémiai Kiadó, Budapest 1964

Library of Congress Catalog Card Number 63-19329

This is a revised translation from the original Hungarian
AZ EMBER ANATÓMIÁJÁNAK ATLASZA
published in 1959 by Medicina Könyvkiadó, Budapest

Printed in Hungary at the Academy Press

SYSTEMA NERVOSUM CENTRALE
THE CENTRAL NERVOUS SYSTEM

This page intentionally left blank

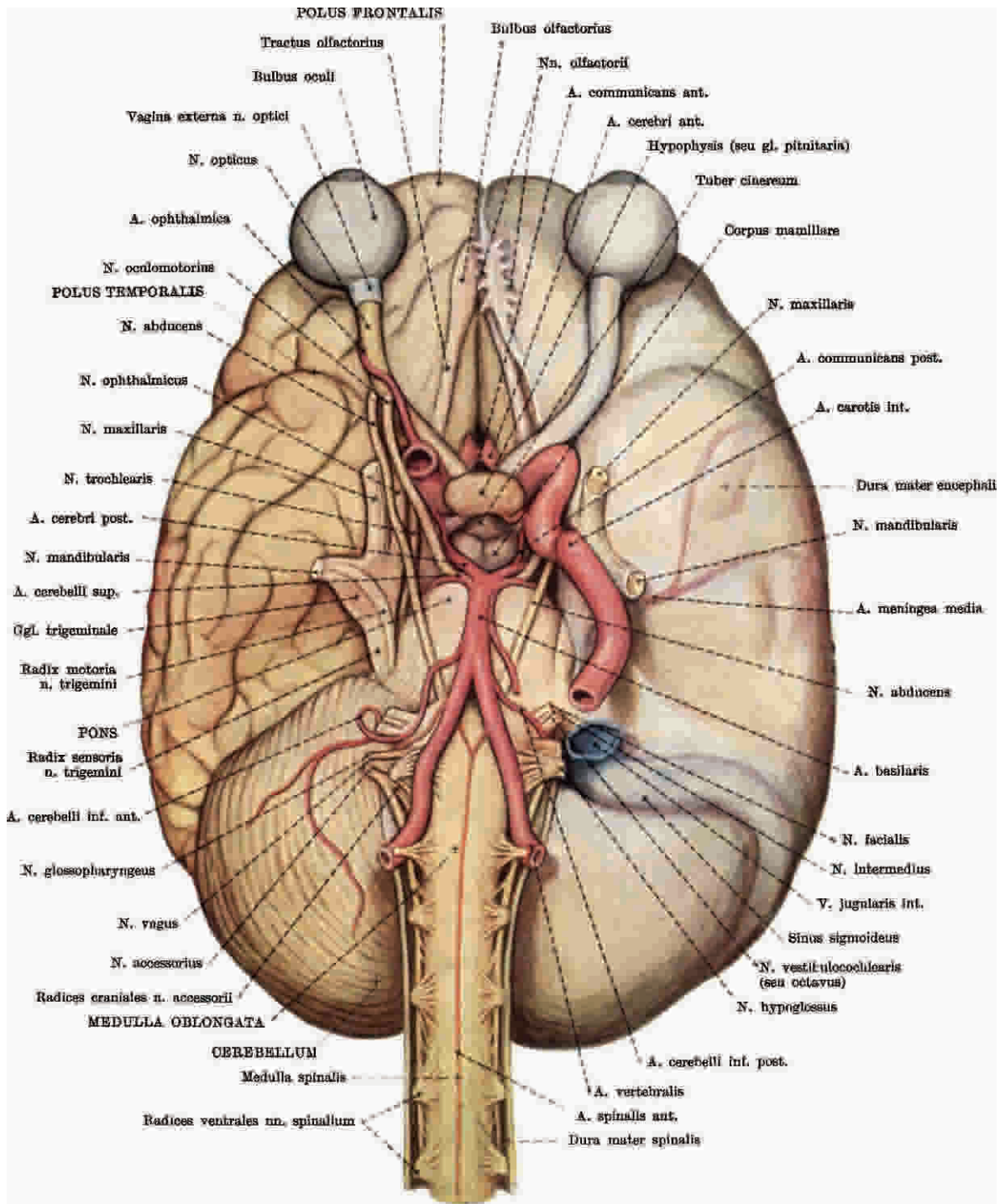


Fig. 1. BASIS CEREBRI
(arteriae baseos cerebri et nervi craniales)
THE BASE OF THE BRAIN
(the arteries of the base of the brain and the cranial nerves)

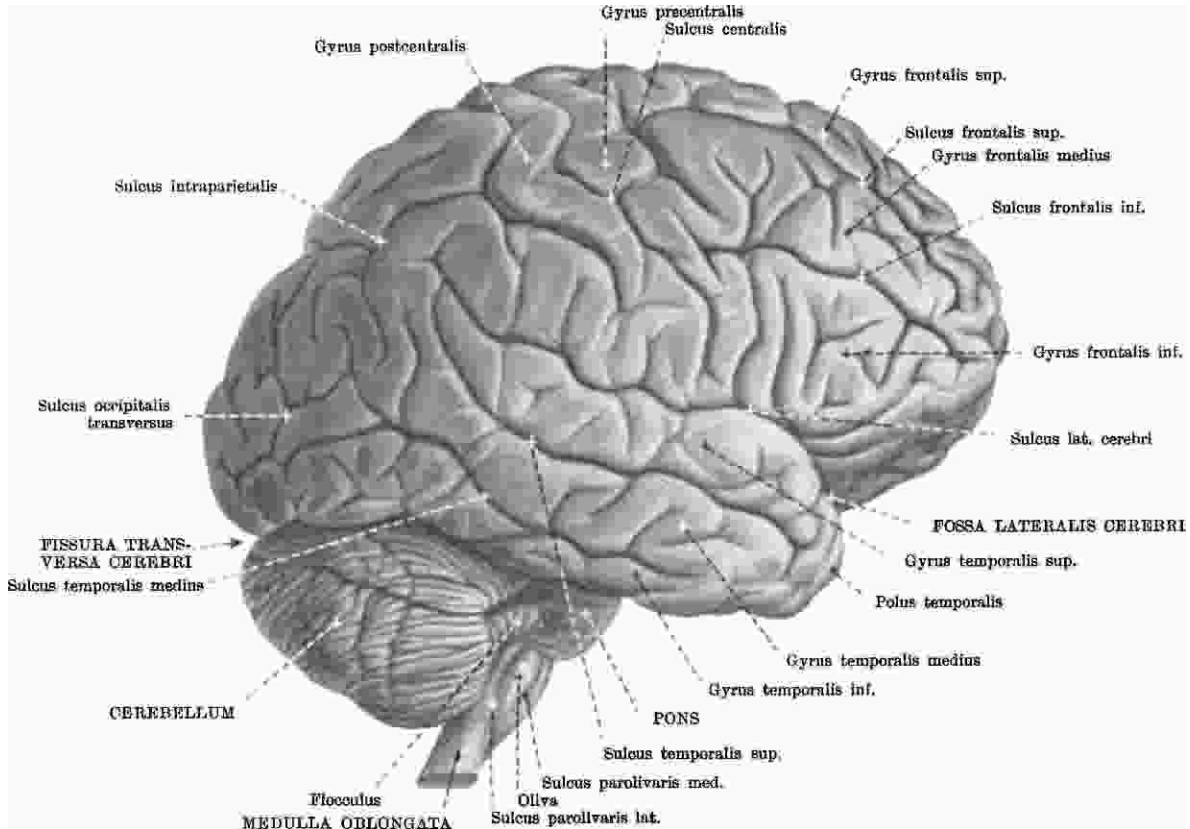


Fig. 2. ENCEPHALON I.
(aspectus lateralis dext.)

THE BRAIN, I
(lateral view from the right)

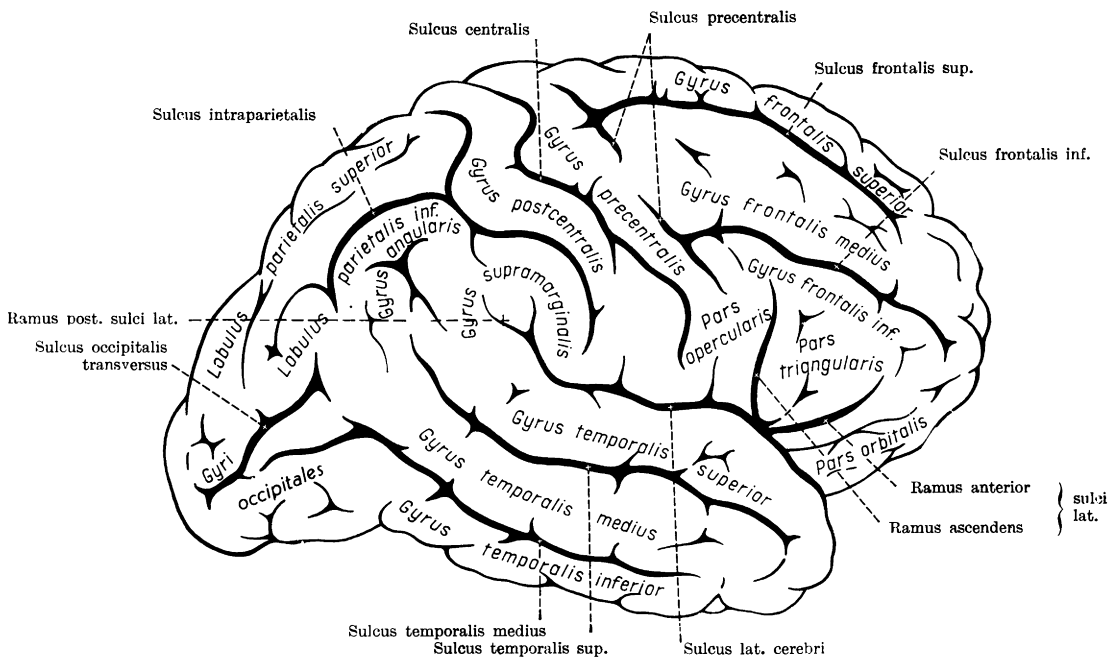


Fig. 3. SULCI ET GYRI CEREBRI I.
(facies supero-lateralis hemispherii, aspectus dext.)

THE SULCI AND GRYI OF THE BRAIN, I
(the superolateral surface of the right hemisphere)

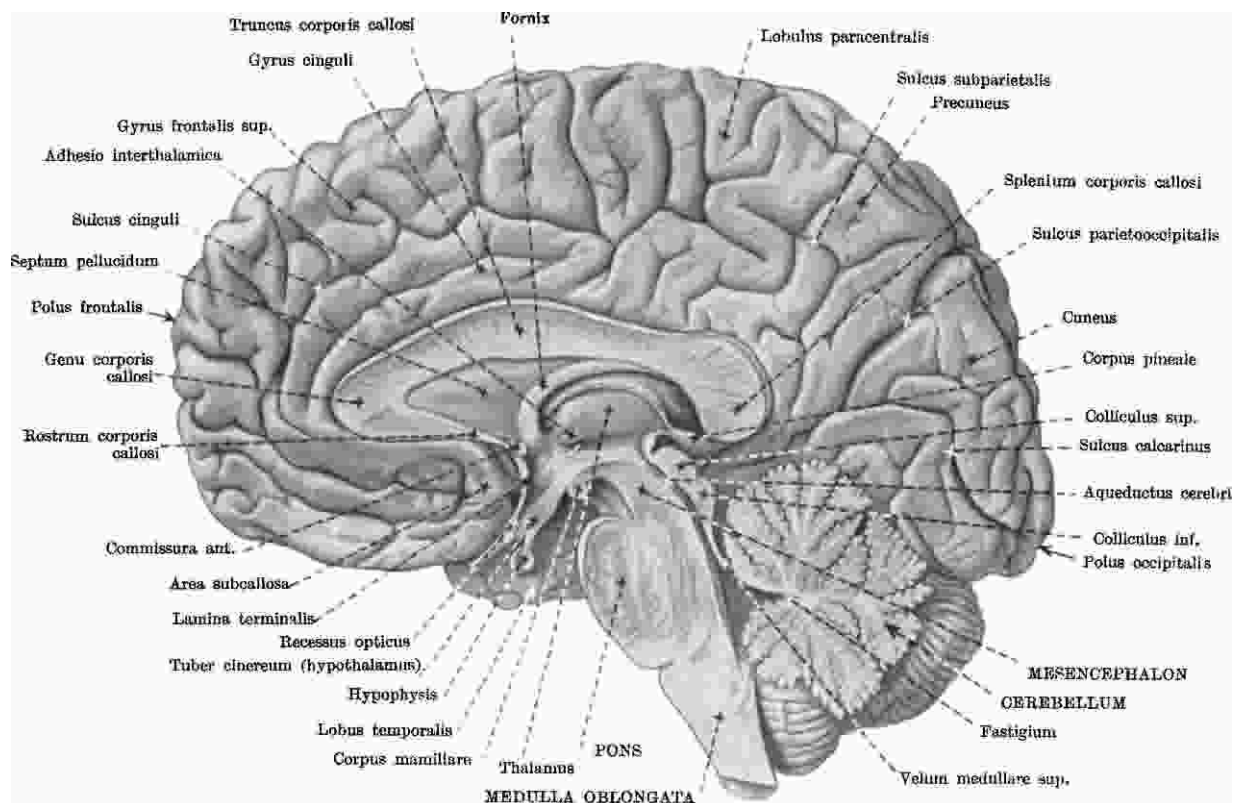


Fig. 4. ENCEPHALON II.
(sectio sagittalis, aspectus medialis, 1. dext.)

THE BRAIN, II
(sagittal section, medial view, right side)

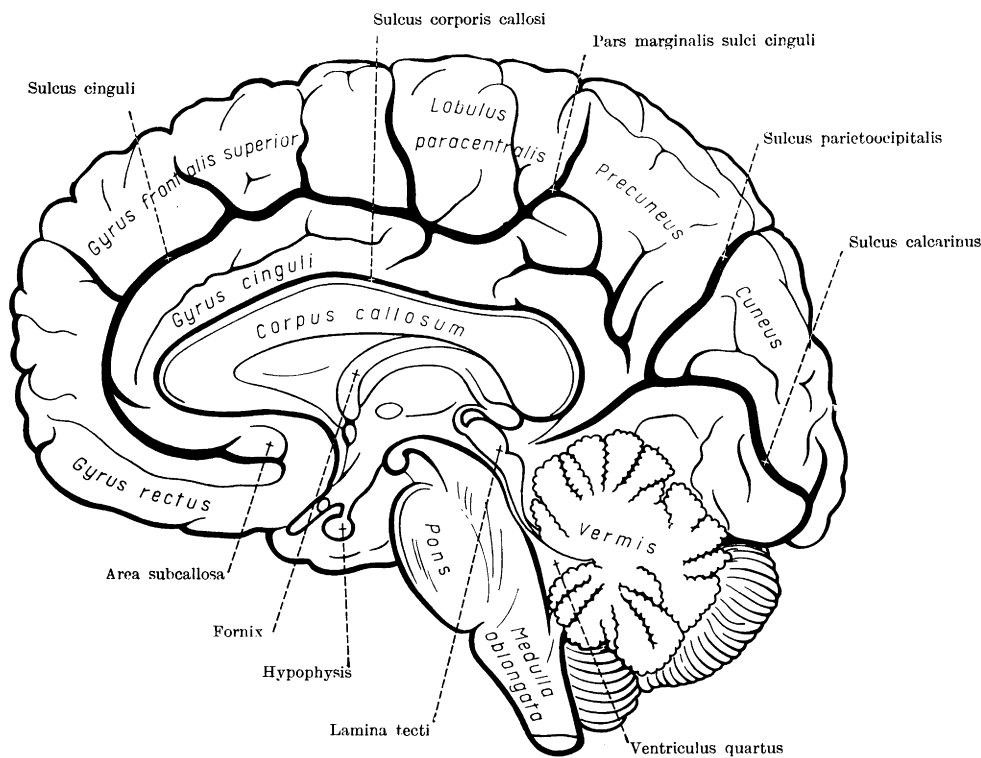


Fig. 5. SULCI ET GYRI CEREBRI II.
(facies medialis hemispherii, sectio sagittalis encephali)
THE SULCI AND GYRI OF THE BRAIN, II
(medial surface of the hemisphere, sagittal section through the brain)

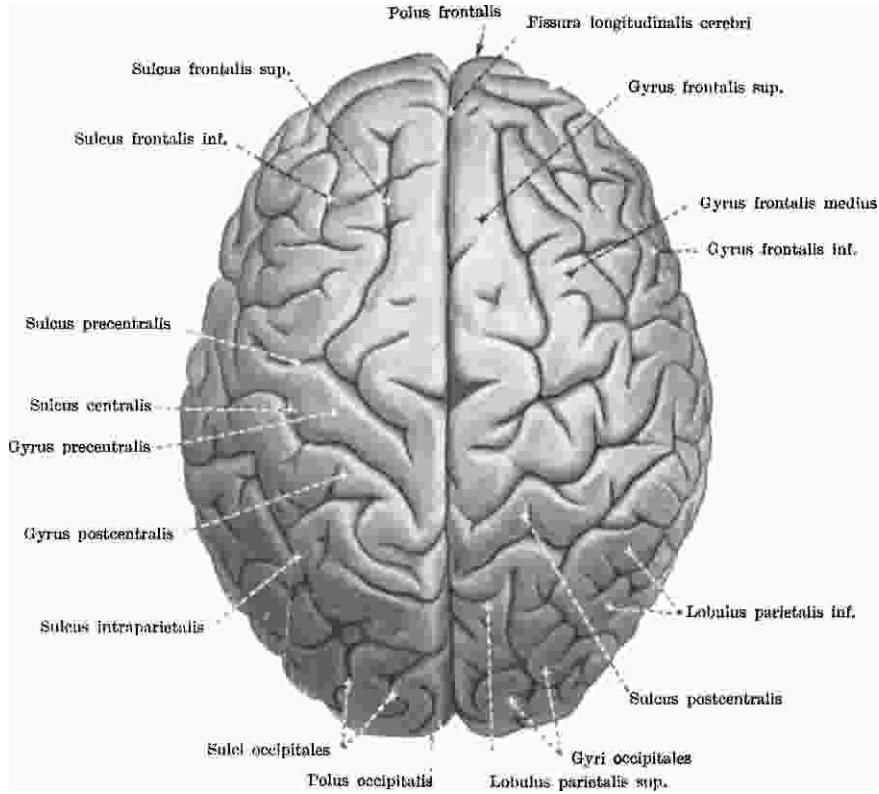


Fig. 6. ENCEPHALON III.
(aspectus superior)

THE BRAIN, III
(seen from above)

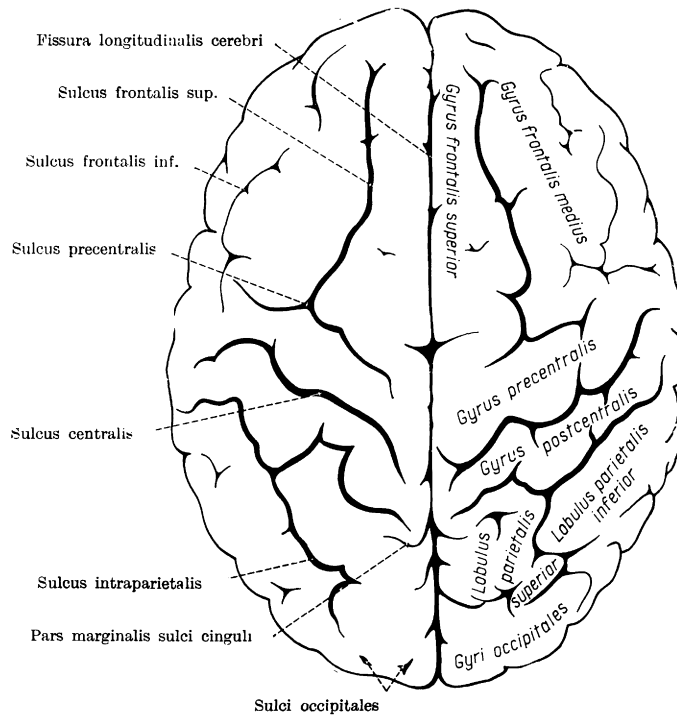


Fig. 7. SULCI ET GYRI CEREBRI III.
(facies supero-laterales hemispheriorum, aspectus superior)
THE SULCI AND GYRI OF THE BRAIN, III
(the superolateral surfaces of the hemispheres, superior aspect)

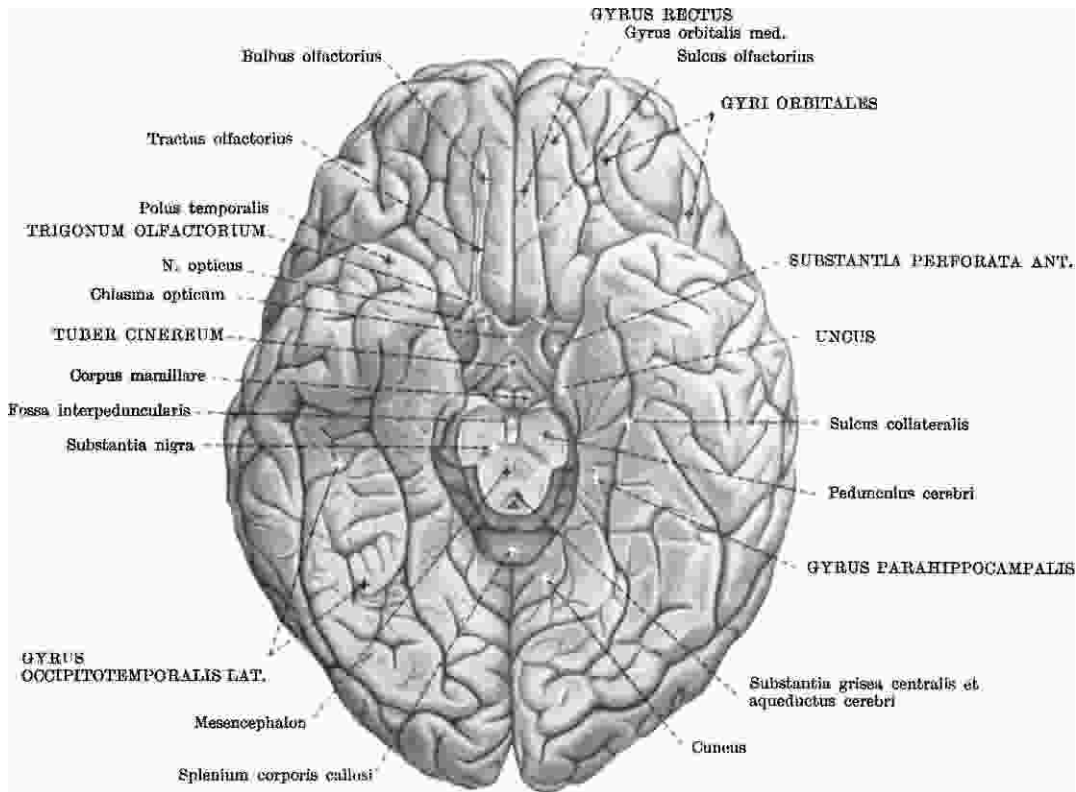


Fig. 8. FACIES INFERIOR CEREBRI
(aspectus inferior)

THE INFERIOR SURFACE OF THE BRAIN
(seen from below)

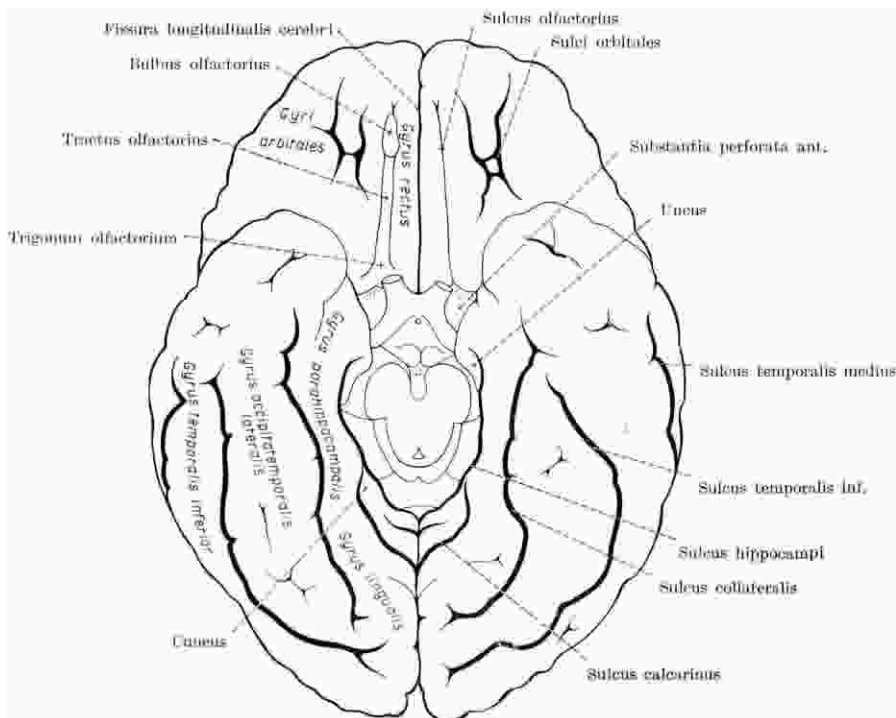


Fig. 9. SULCI ET GYRI CEREBRI IV.
(facies inferiores hemispheriorum)

THE SULCI AND GYRI OF THE BRAIN, IV
(inferior surfaces of the hemispheres)

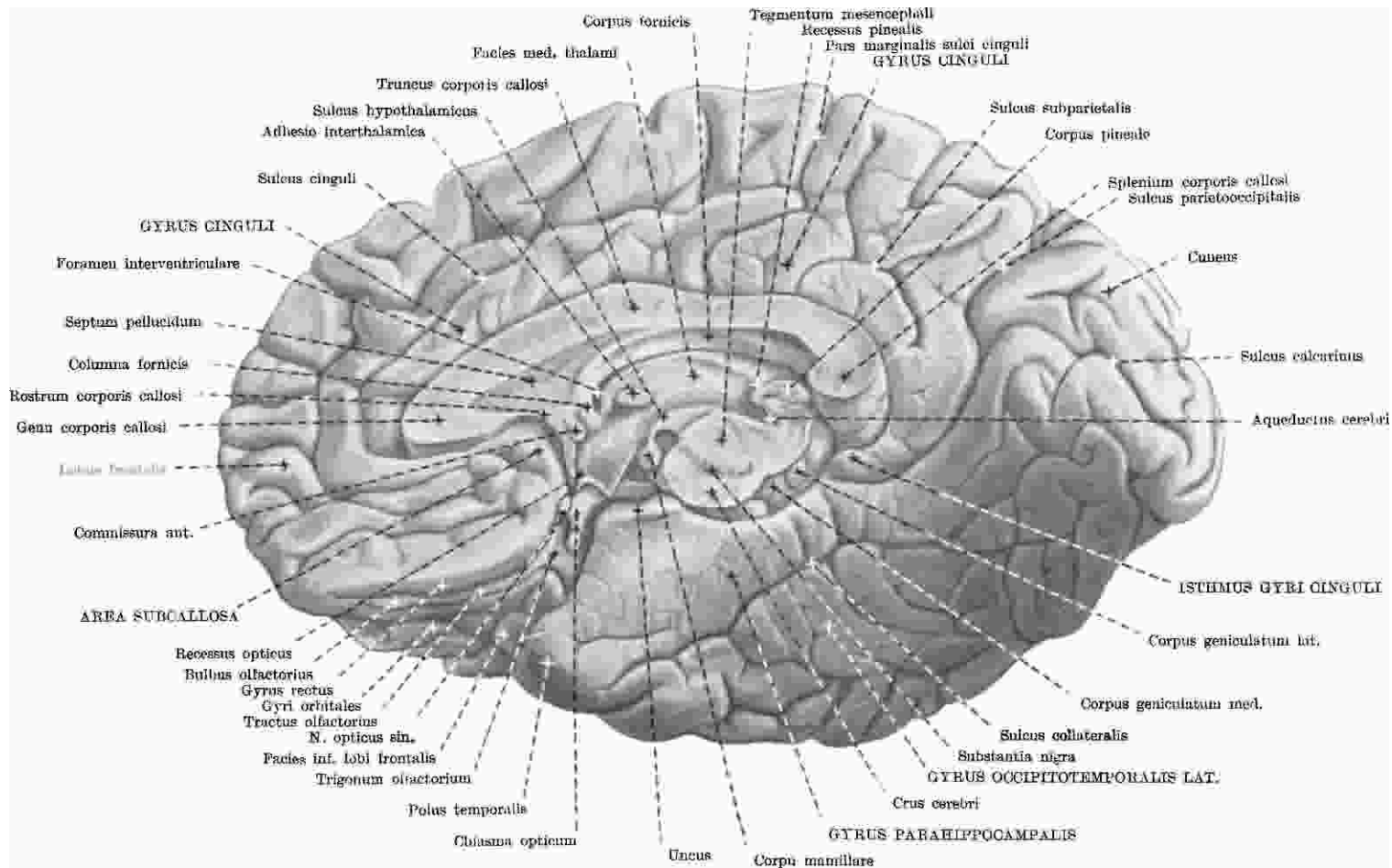


Fig. 10. FACIES MEDIALIS ET INFERIOR HEMISPHERII
 (telencephalon et diencephalon, aspectus inferio-medialis hemispherii dextri)
 THE MEDIAL AND INFERIOR SURFACES OF THE HEMISPHERE
 (the telencephalon and the diencephalon, inferomedial view of the right hemisphere)

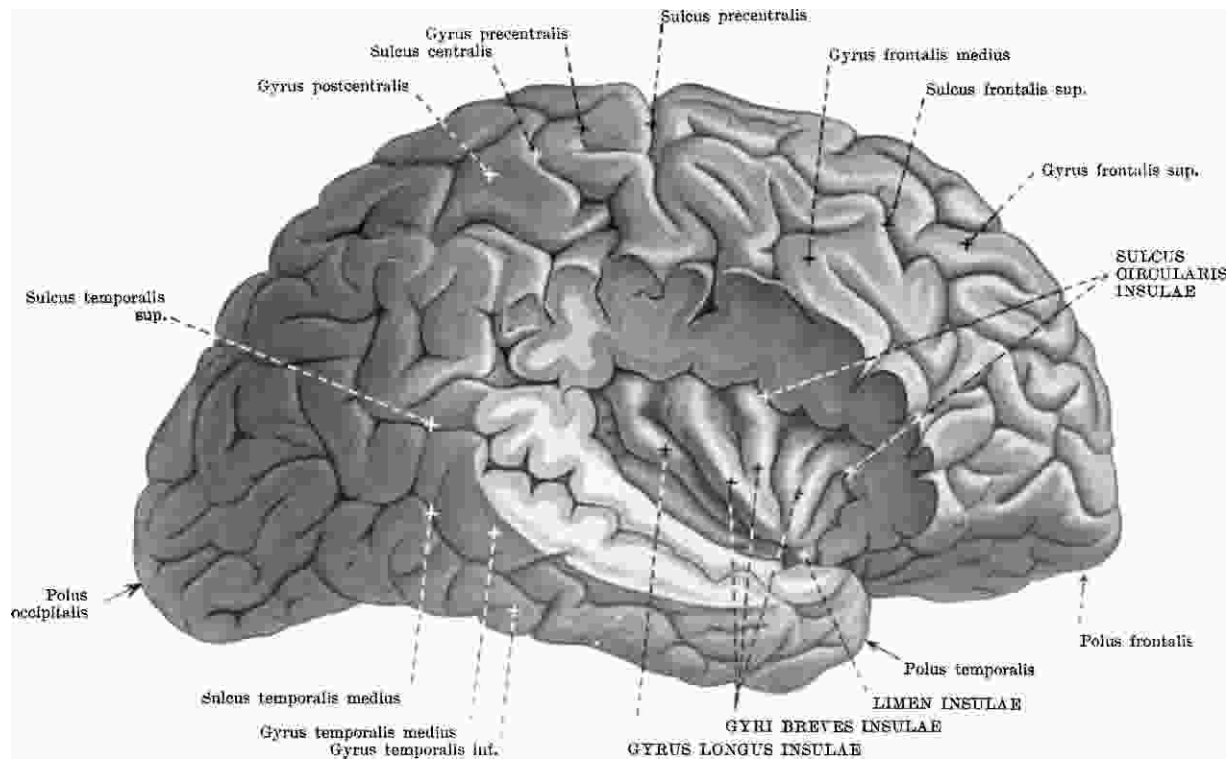


Fig. 11. INSULA
 (opercula frontoparietale et temporale ablata)
 THE INSULA
 (the fronto-parietal and temporal opercula removed)

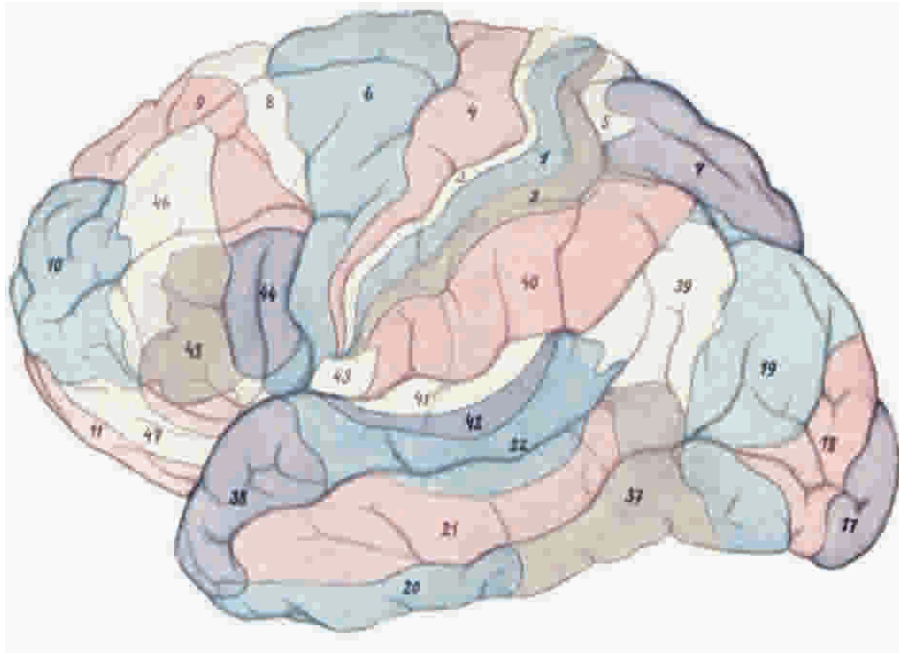


Fig. 12. AREAE CORTICIS CEREBRI I.

(areae cytoarchitectonicae secundum Brodmann, facies supero-lateralis cerebri, hemispherium sin.)

THE CORTICAL AREAS OF THE BRAIN, I

(cortical areas after Brodmann, the superolateral surface of the left hemisphere)

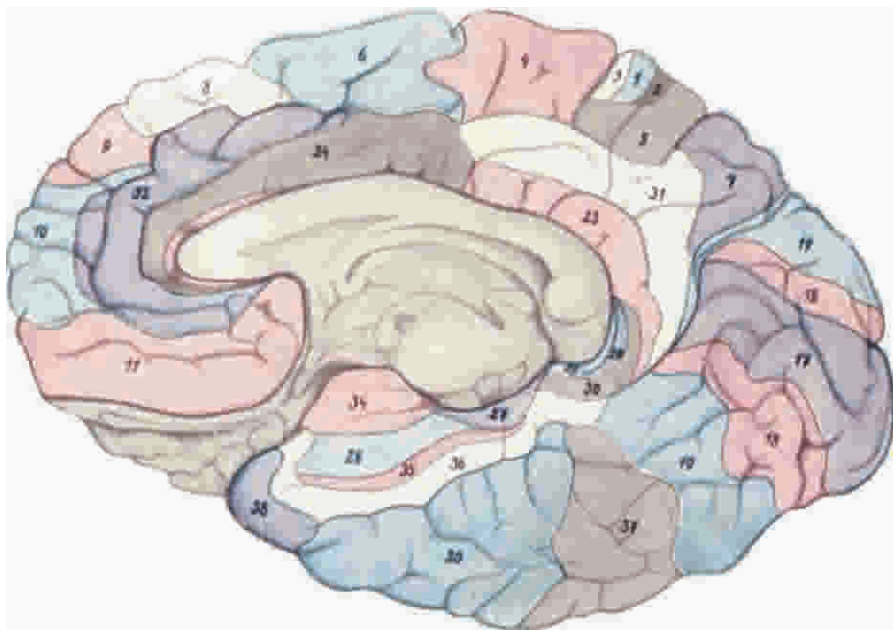


Fig. 13. AREAE CORTICIS CEREBRI II.

(areae cytoarchitectonicae secundum Brodmann, facies medialis et inferior cerebri, hemispherium dext.)

THE CORTICAL AREAS OF THE BRAIN, II

(cortical areas after Brodmann, the medial and inferior surfaces of the right hemisphere)

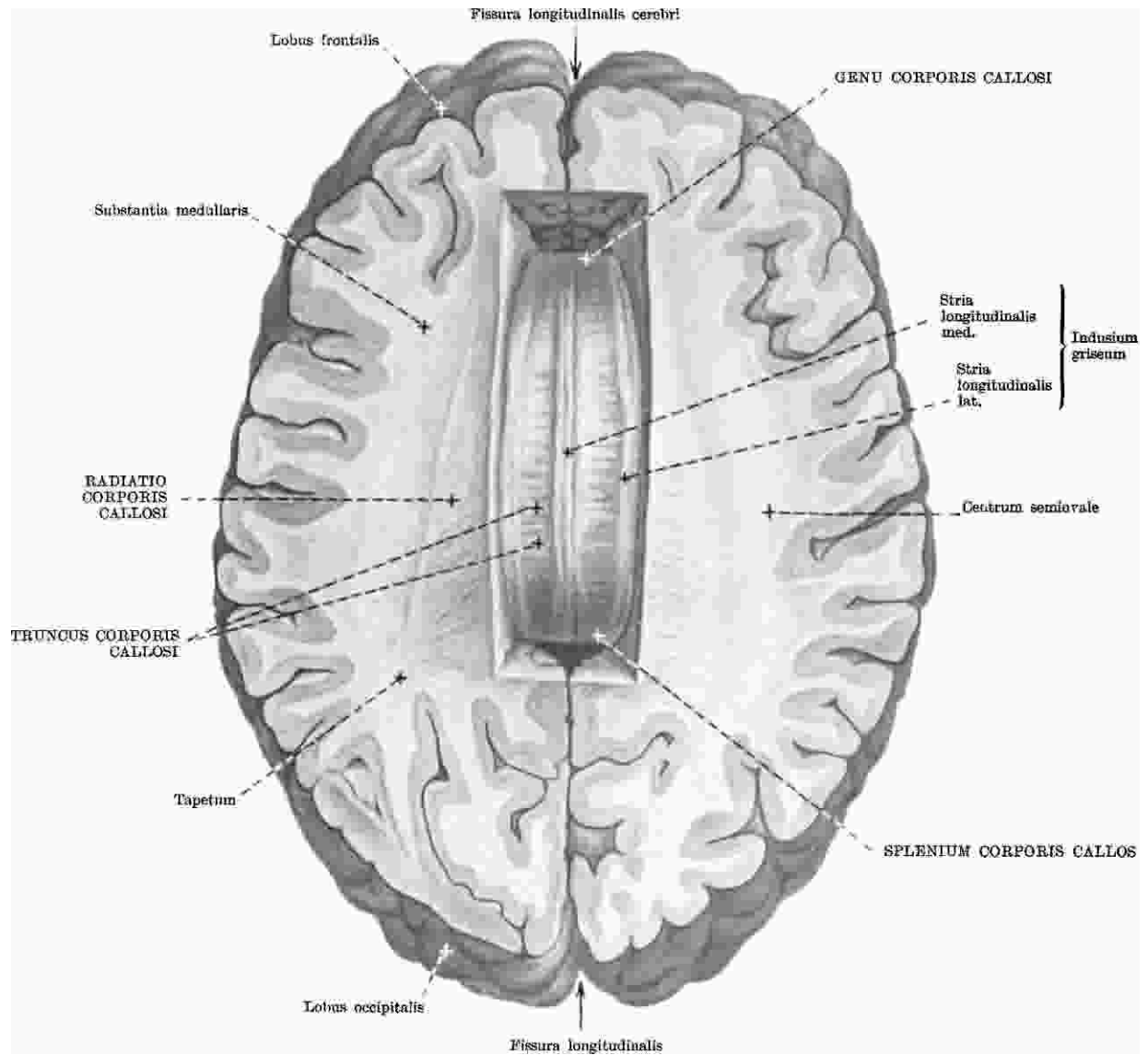


Fig. 14. CORPUS CALLOSUM
 (sectio horizontalis cerebri, aspectus superior)
 THE CORPUS CALLOSUM
 (horizontal section of the brain, seen from above)

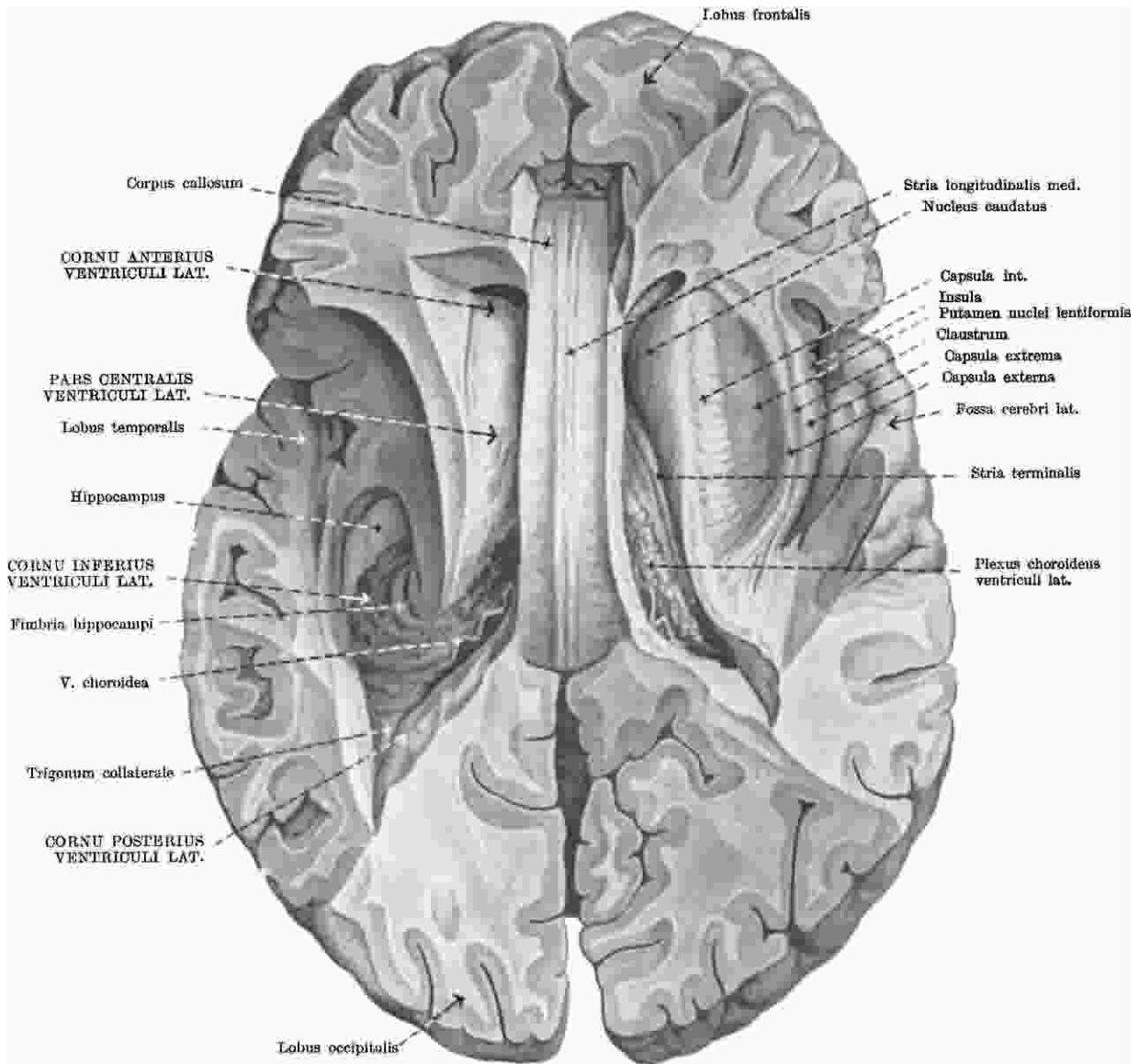


Fig. 15. VENTRICULI LATERALES I.
 (aspectus superior)
 THE LATERAL VENTRICLES, I
 (seen from above)