

***Macoma elimata* Dunnill & Coan, 1968**

Nomenclature	
Phylum	Mollusca
Class	Bivalvia
Order	Veneroida
Family	Tellinidae
Common Synonyms (S) Previous Names (PN)	NA



Distribution	
Type Locality	
Geographic Distribution	Unalaska Island, Aleutian islands (56.0°N, 166.5°N) [UAM], east to Albatross Bank, Kodiak Island (56.5°N) [SBMNH] and Galena Bay, Alaska (60.9°N) [LACM], south to Redondo beach, California (33.8°N) [LACM], in 9-435m, in sand and silt.

Description
Length to 35 mm; shape subovate; anterior end much rounder, longer than posterior ; posterior end produced, truncate terminally; ligament sunken in deeply beveled escutcheon ; periostracum silky, generally less eroded than in <i>M. calcarea</i> ; pallial sinus very deep in left valve, moderate in right, substantially detached in both valves

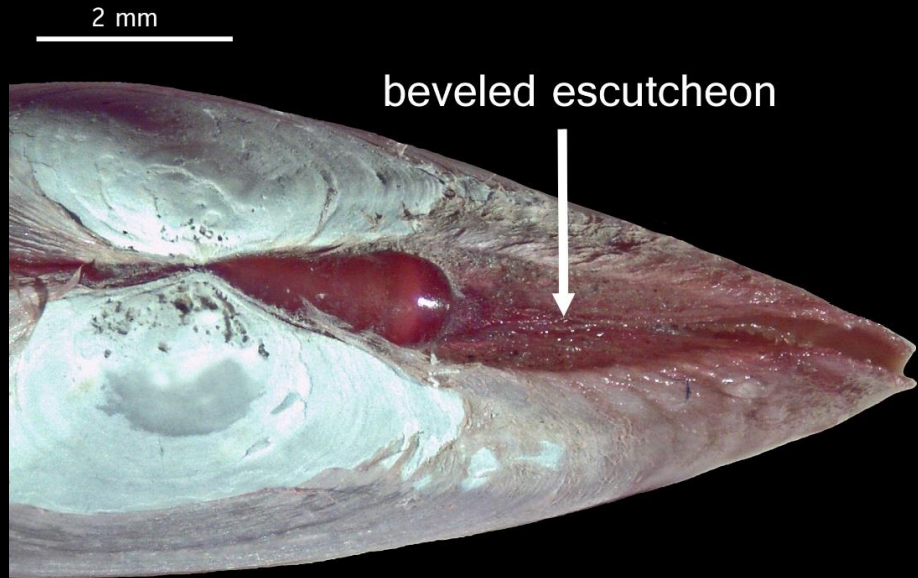
Related Species and Characteristic Differences	
Species Name	Diagnostic Characteristics
<i>Macoma calcarea</i>	Length to 55 mm; does not have a beveled escutcheon; the pallial sinus is extremely similar to <i>M. elimata</i> so it is NOT a good characteristic for differentiations NOTE: <i>M. elimata</i> is the dominant species of the two within Puget Sound

Diagnostic Characteristics

Diagnostic Characteristics

Photo Credit: Marine Sediment Monitoring Team

escutcheon beveled



beveled escutcheon

Macoma elimata

shape subovate;
pallial sinus very deep in left valve,
moderate in right



Macoma elimata



Macoma elimata

Literature

Coan, E.V., Valentich-Scott, P., and F.R. Bernard. 2000. Bivalve Seashells of Western North America Marine Bivalve Mollusks from Arctic Alaska to Baja California. Santa Barbara Museum of Natural History Monographs Number 2. Studies in Biodiversity Number 2. ISBN 0-936494-30-1. Santa Barbara: Santa Barbara Museum of Natural History. pp. 405-406, 410.

Harbo, R.M. 1997. Shells & Shellfish of the Pacific Northwest A Field Guide. Madeira Park, BC: Harbor Publishing. pp. 38, 159.

More Information

<p>More information about Puget Sound benthic invertebrates is available at: http://www.ecy.wa.gov/programs/eap/psamp/index.htm</p>	<p>Prepared by Angela Eagleston (Ecology Ecology); reviewed by Susan Weeks (Oikos). This document is available on the Department of Ecology's website at https://fortress.wa.gov/ecy/publications/SummaryPages/1703310.html</p>	<p>If you need this document in a format for the visually impaired, call (360) 407-6764. Persons with hearing loss can call 711 for Washington Relay Service. Persons with a speech disability can call (877) 833-6341.</p>
--	--	---