



Terebellides californica Williams, 1984


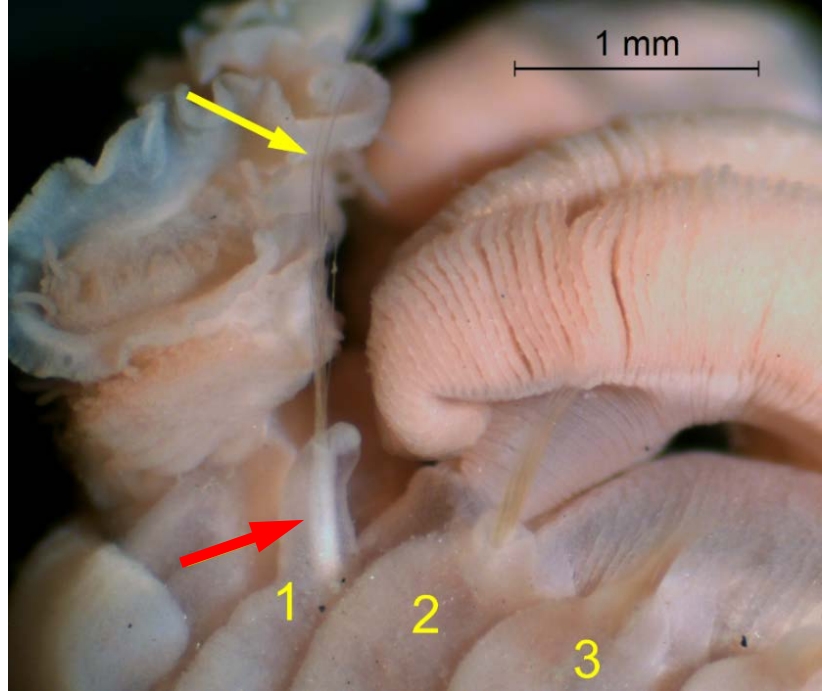
Nomenclature	
Phylum	Annelida
Class	Polychaeta
Family	Trichobranchidae
Synonyms	None; see comments section below.



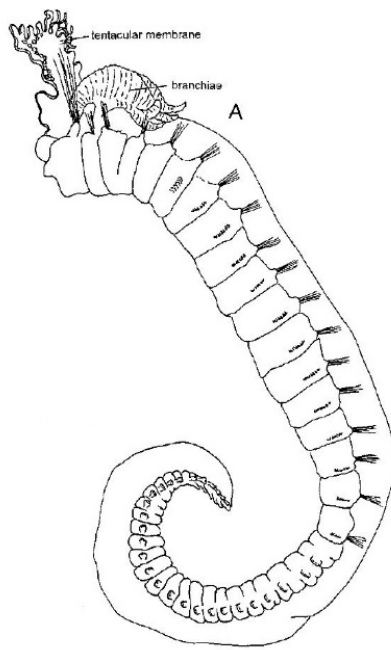
Distribution	
Type Locality	California, San Miguel Island, 98-101 m (holotype and paratypes)
Geographic Distribution	British Columbia, Canada to western Mexico
Habitat	Silty mud and fine sand, occasionally coarser sediments, in shelf and slope depths (Williams 1984)

Description
From Hilbig 2000 (unless otherwise noted)
<p>Size/Color: Length to 35 mm, width to 3 mm without parapodia. Mature worms at least 12 mm long (Williams 1984). Segments to 55. Pale in alcohol.</p> <p>Body: Thoracic chaetigers 18, abdominal chaetigers 30-35 (Williams 1985).</p> <p>Prostomium: Tentacular lobe tall, wide, undulating. Peristomium a complete ring, in adults produced into lower lip.</p> <p>Branchiae: Originating from chaetiger 1; 4 lobes fused for ½ their length, tips short. With slight forward projection in adults.</p> <p>Parapodia/Chaetae: Segment 3 bearing 1st notopodia, well-developed, with fine, very long chaetae (2x as long as those on following chaetigers). Chaetigers 2-5 with notopodia only (winged capillaries), with lateral lappets (largest on chaetiger 2). Chaetiger 6 with first neuropodia in the form of modified uncini – approximately 6 moderately bent spine-like hooks. Neuropodia of chaetigers 7-18 with regular acicular hooks with curved shaft and main fang surmounted by apex with several small teeth. Abdomen with neuropodia only; elongate, narrow pinnules, increasing in length toward pygidium, bearing small avicular uncini.</p> <p>Pygidium: Simple, furrowed ring with low rounded papillae around terminal anus.</p>

Diagnostic Characteristics

Diagnostic Characteristics	Photo, Illustrations	Photo, Illustration Credit
<p>Branchial lobes fused, with 4 branches on single stalk (characteristic of genus; Hilbig 2000)</p>	 <p style="text-align: center;"><i>Branchiae, dorsal view; voucher specimen AN 1520</i></p>	<p>Marine Sediment Monitoring Team</p>
<p>First chaetiger with notochaetae (indicated by yellow arrow, right) 2x longer than following chaetigers, arising from well-developed notopodia (indicated by red arrow, right)</p>	 <p style="text-align: center;"><i>Chaetigers 1-3, lateral view; voucher specimen AN 2078</i></p>	<p>Marine Sediment Monitoring Team</p>

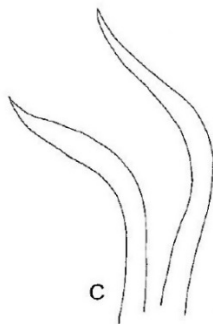
30-35 abdominal chaetigers
(Williams 1985)



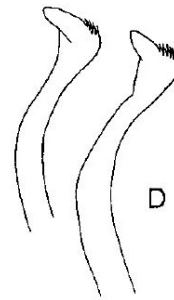
Hilbig 2000,
p. 302,
figure 10.3
A

Uncini from chaetiger 6
(genus characteristic)

Uncini on chaetiger 6 modified as spines; regular thoracic uncini begin on chaetiger 7

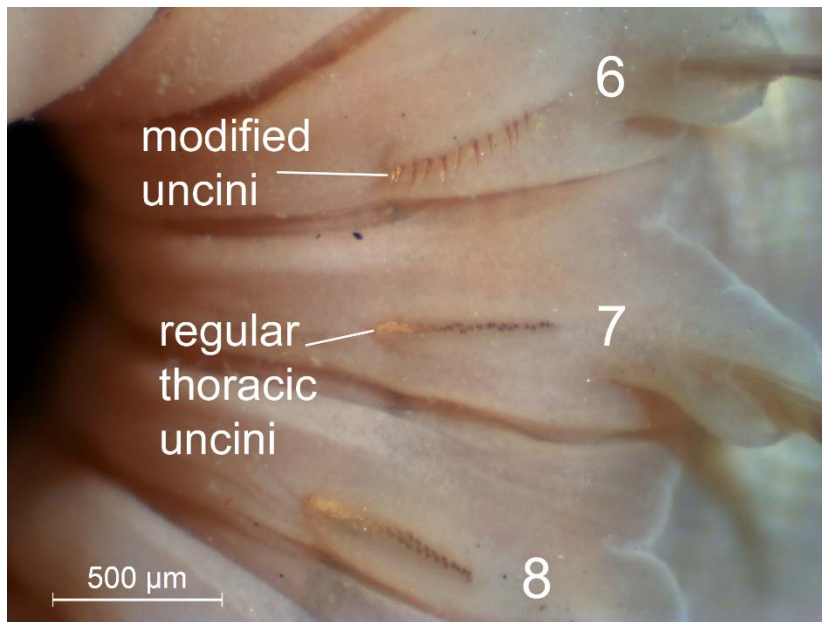


Modified uncini from chaetiger 6



Regular thoracic uncini

Hilbig 2000,
p. 302,
figures 10.3
C and D



Chaetigers 6-8, lateral view; voucher specimen AN 2078

Marine
Sediment
Monitoring
Team

**Methyl Green
Staining:**

Prostomium and
peristomium
staining dark
green ventrally;
segments 1-8 with
concentrated dark
bluish cells or
bands ventrally,
weakening
through abdomen

Dorsal stain
limited to lateral
bands on
chaetigers 4-8

Branchiae staining
on ventral side
and tips of lobes,
otherwise white



Stained specimen from 2015 PSEMP UB Station 157, lateral view



*Prostomium and anterior thorax, lateral view; specimen from 2015 PSEMP
Urban Bays Station 157*



*Prostomium and anterior thorax, ventrolateral view; specimen from 2015
PSEMP Urban Bays Station 157*



*Prostomium and anterior thorax, ventrolateral view; specimen from 2015
PSEMP Urban Bays Station 157*

Related Species and Characteristic Differences

Species Name	Diagnostic Characteristics
<i>Terebellides horikoshii</i>	First notochaetae as long as or only slightly longer than following, arising from more reduced notopodia (Hilbig 2000).
<i>Terebellides reishi</i>	First notochaetae as long as or only slightly longer than following, arising from more reduced notopodia; abdominal chaetigers 40-55 (Hilbig 2000).

Comments

Specimens identified as *Terebellides stroemi*, a species once thought to be cosmopolitan in distribution, were examined in 1984 by S.J. Williams, including specimens from the eastern Pacific. Several new species were described from this material, including *T. californica*, based on the distinct first notopodia and notochaetae. *T. stroemi* is still considered a valid species with a more limited Atlantic distribution.

Literature

Hilbig, B. 2000. Family Trichobranchidae Malmgren, 1866. p. 295-310. *IN: Blake, J.A., Hilbig, B. and P. Valentich Scott (Eds). Taxonomic Atlas of the Benthic Fauna of the Santa Maria Basin and Western Santa Barbara Channel. Volume 7 - The Annelida Part 4. Polychaeta: Flabelligeridae to Sternaspidae.* Santa Barbara Museum of Natural History. Santa Barbara, CA. (p. 301-303)

Williams, S.J. 1984. The status of *Terebellides stroemi* (Polychaeta; Trichobranchidae) as a cosmopolitan species, based on a worldwide morphological survey, including description of new species. 118-142. *IN: Hutchings, Patricia A. (Ed.). Proceedings of the First International Polychaete Conference.* Sydney, Australia, 1983: Sydney, The Linnean Society of New South Wales.

Williams, S.J. 1985. *Terebellides californica* Williams, 1984. SCAMIT Voucher Sheet. In: SCAMIT Taxonomic Toolbox, Southern California Association of Marine Invertebrate Taxonomists. Accessed online at <http://www.scamit.org/tools/toolbox/Phylum%20Annelida/Class%20Polychaeta/Family%20Trichobranchidae/Terebellides%20californica.pdf> on 7/15/2016

More Information

To learn more about our Voucher Sheet project, please visit: <http://ecologywa.blogspot.com/2017/03/eyes-under-puget-sound-voucher-sheet.html>

More information on Puget Sound marine monitoring is available on our [website](#), including a full list of published [benthic invertebrate voucher sheets](#).

Prepared by Dany Burgess (Ecology's Marine Sediment Monitoring Team); reviewed by Tara Macdonald and Hiroki Tomoe (Biologica). This document is available on the Department of Ecology's website at <https://fortress.wa.gov/ecy/publications/SummaryPages/1803383.html>

If you need this document in a format for the visually impaired, call (360) 407-6764. Persons with hearing loss can call 711 for Washington Relay Service. Persons with a speech disability can call (877) 833-6341.