

Island pinhole borer (482)

Summary

- Worldwide distribution. In Australia, New Zealand, most Pacific island countries.
- Major pest causing tunnels and staining in distressed, fallen trees and sawn timber. All stages completed inside tunnels, feeding on fungus introduced by adults as they bore.
- Spread: adults emerge and fly short distances. Longer distance spread with domestic and international movement of logs and timber.
- Biosecurity: high chance of introduction in logs and timber. Countries yet free should set traps at ports, and ensure crates, pallets and dunnage compliant with international standard: (<http://www.fao.org/3/a0450e/a0450e.pdf>).
- Cultural control: remove felled trees as quickly as possible, and convert to seasoned timber.
- Chemical control: not appropriate; insecticides unlikely to reach the beetles deep inside trees, logs or timber.

Common Name

Island pinhole borer. It is also known as ambrosia beetle, bark beetle, coconut shot-hole borer, and shot-hole beetle. The common name, ambrosia beetle, belongs to a number of related species. Ambrosia beetles cultivate fungi as their sole food source in the tunnels they make in distressed trees.

Scientific Name

Xyleborus perforans; previously known with other species names, and also placed in other genera, e.g., *Anodius*, *Bostrichus* and *Tomicus*.

AUTHOR Grahame Jackson

Information from CABI (2020) *Xyleborus perforans* (island pinhole borer) Crop Protection Compendium. (<https://www.cabi.org/cpc/datasheet/57169>); and from Walker K (2006) Island pinhole borer (*Xyleborus perforans*). PaDIL - (<http://www.padil.gov.au>). Photos 1-3 Walker K (2006) Ibid.

Produced with support from the Australian Centre for International Agricultural Research under project HORT/2016/185: *Responding to emerging pest and disease threats to horticulture in the Pacific islands*, implemented by the University of Queensland and the Secretariat of the Pacific Community.

Copyright © 2021. All rights reserved.



Photo 1. Ambrosia beetle, *Xyleborus deformans*, view from the side.

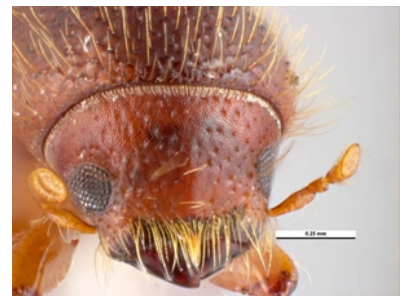


Photo 2. Ambrosia beetle, *Xyleborus deformans*, front of head.



Photo 3. Ambrosia beetle, *Xyleborus deformans*, viewed from above.



Australian Government
Australian Centre for
International Agricultural Research



Web edition hosted at <https://apps.lucidcentral.org/pppw>