

## Fiji fruit flies (170)

### Summary

- *Bactrocera kirki* - guava, mango, avocado; *Bactrocera passiflorae* - guava, citrus, mango, kavika; *Bactrocera xanthodes* - breadfruit, jackfruit, papaya; many more hosts, and fruit fly species occur.
- Note, *Bactrocera kirki* is present only on Rotuma.
- Females need protein before they can lay viable eggs.
- Cultural control: bag fruit with paper or leaves; collect fallen fruit and destroy; harvest early (banana and papaya); some non-hosts, e.g., chilli, pineapple.
- Chemical control: use a commercial protein bait spray, e.g. *MPPIL*, Royal Tongalure or Bactrogel.

### Common Name

There are seven fruit flies in Fiji: The species of economic importance are: (i) *Bactrocera kirki* (no common name), (ii) *Bactrocera xanthodes* (the Pacific fruit fly), (iii) *Bactrocera passiflorae* (Fijian fruit fly), (iv) *Bactrocera distincta*, and (v) *Bactrocera* species near *passiflorae*. *Bactrocera gnetum* and *Bactrocera obscura* are not of economic importance.

### Scientific Name

*Bactrocera distincta*, *Bactrocera kirki*, *Bactrocera gnetum*, *Bactrocera obscura*, *Bactrocera passiflorae*, *Bactrocera* species near *passiflorae*, and *Bactrocera xanthodes*. *Bactrocera xanthodes* is closely related to three other species: *Bactrocera paraxanthodes* in New Caledonia, and *Bactrocera neoxanthodes* in Vanuatu, and a species not yet described from Samoa.



Photo 1. *Bactrocera kirki*.



Photo 2. Fiji fruit fly, *Bactrocera passiflorae*.



Photo 3. Pacific fruit fly, *Bactrocera xanthodes*.



Photo 4. Pacific fruit fly, *Bactrocera xanthodes*, laying eggs.



Photo 5. Fruit fly eggs.



Photo 6. Fruit fly larvae or maggots.

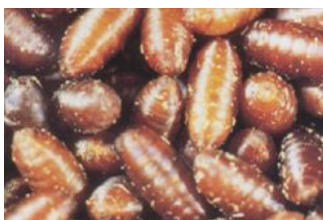


Photo 7. Fruit fly pupae.



Photo 8. Newspaper with edges folded and stapled to form a bag in which to insert fruit to protect it from fruit flies.



Photo 9. Banana leaves used to wrap a fruit bunch to prevent attack by fruit flies, other pests, and to promote uniform ripening, in Papua New Guinea.

---

AUTHOR Grahame Jackson

<sup>1</sup>Information from Swaine G (1971) *Agricultural Zoology in Fiji*. Her Majesty's Stationery Office, London; and (information and photos) *Fruit flies in Fiji Islands* (2000), SPC Pest Advisory Leaflet 28. (<https://lrd.spc.int/pest-advisory-leaflet?start=15>); and from *Fruit fly control methods for Pacific island countries and territories* (2001), SPC Pest Advisory Leaflet 40. ([https://lrd.spc.int/pubs/cat\\_view/469-pest-advisory-leaflets](https://lrd.spc.int/pubs/cat_view/469-pest-advisory-leaflets)).

Produced with support from the Australian Centre for International Agricultural Research under project PC/2010/090: *Strengthening integrated crop management research in the Pacific Islands in support of sustainable intensification of high-value crop production*, implemented by the University of Queensland and the Secretariat of the Pacific Community.

---

Copyright © 2022. All rights reserved.



Australian Government  
Australian Centre for  
International Agricultural Research



Web edition hosted at <https://apps.lucidcentral.org/pppw>