

## *Beilschmiedia volckii* B.Hyland

Family:  
Lauraceae

Hyland, B.P.M. (1989) *Australian Systematic Botany* 2: 156. Type: A.K. Irvine 464, Boonjee, Timber Range, 1930, 15 ii: 1072 (QRS, holotypus).

Common name:  
Blush Walnut; Walnut, Blush; Walnut, Boonjee Blush; Boonjee Blush Walnut

### Stem

A thin cream or pale brown layer generally visible beneath the subrhynchium layer before the first section of the outer blaze.

### Leaves

Twigs +/- terete, clothed in straight, appressed, pale brown hairs when young but almost glabrous when older. Leaf blades about 12-27 x 6.5-11 cm, green and glabrous on the underside, clothed in straight, appressed, pale brown hairs only when young. Midrib pale, +/- translucent, slightly depressed or flush with the upper surface. Petioles flat on the upper surface. Oil dots visible with a lens. Pale brown lenticels usually obvious on the leaf bearing twigs.

### Flowers

Tepals about 0.7-1.3 mm long. Stamens six. Staminodes six, dimorphic and hairy, but not differentiated into heads and filaments. Ovary glabrous, +/- sessile.

### Fruit

Fruits about 45-67 x 43-65 mm. Cotyledons burgundy in colour.

### Seedlings

At the tenth leaf stage: leaf blade glaucous on the underside; oil dots numerous, very small, visible only with a lens; petiole clothed in numerous short prostrate inconspicuous hairs. Seed germination time 17 to 66 days.

### Distribution and Ecology

Endemic to NEQ, known only from collections made on the edge of the Atherton Tableland in the Johnstone River valley and a collection from north of the Daintree River. Altitudinal range from 150-700 m. Grows in well developed lowland and upland rain forest.

### Natural History & Notes

Flesh of fallen fruit eaten by Musky Rat-kangaroos. Cooper & Cooper (1994). This species produces millable logs and the sawn timber is of high quality and is marketed as Boonjee Blush Walnut, a useful cabinet and general purpose timber. Wood specific gravity 0.53-0.56. Hyland (1989).

### RFK Code

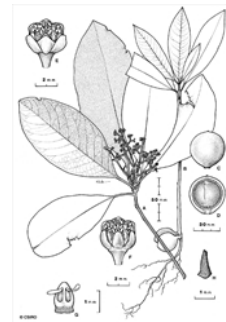
288



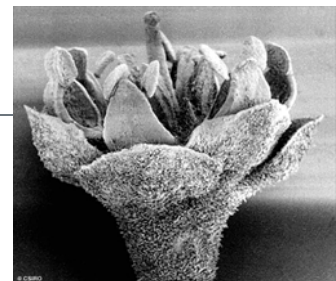
Fruit, side views, cross section and seed. © W. T. Cooper



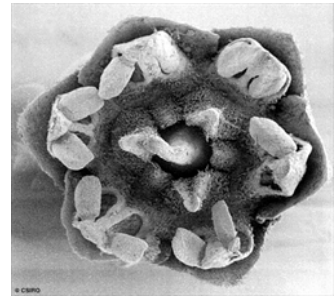
Scale bar 10mm. © CSIRO



Habit, flower, stamen, staminode, fruit, seedling. © CSIRO



Flower, side view, hairy (papillose) tepals, anthers & style. © CSIRO



Flower, bird's-eye view, tepals, anthers (6), staminodes & style. © CSIRO



10th leaf stage. © CSIRO



Cotyledon and 1st leaf stage, hypogeal germination. © CSIRO



Cotyledon and 1st leaf stage, hypogeal germination. © CSIRO



Cotyledon stage, hypogeal germination. © CSIRO



Web edition hosted at <https://apps.lucidcentral.org/rainforest>