

Endiandra cooperana B.Hyland

Family:
Lauraceae

Hyland, B.P.M. (1989) *Australian Systematic Botany* 2: 224. Type: B. Gray 1507, Cooper Creek, Portion 54, Alexander 28.8.1979; holotype: QRS.

Stem

White longitudinal stripes normally visible in the outer blaze. Blaze odour usually conspicuous and resembles that of incense.

Leaves

Twigs fluted, clothed in straight, appressed, pale brown hairs when young, glabrous when older. Leaf blades about 8.5-15 x 3-6 cm, green on the underside, clothed in straight, appressed, pale brown hairs when young, glabrous when older, often foveolate. Midrib depressed or flush with the upper surface. Petioles channelled on the upper surface. Oil dots visible with a lens.

Flowers

Flowers scarcely opening at anthesis, the tepals remaining +/- erect. Tepals about 2.3-2.8 mm long. Staminal glands sessile, three to six, free from one another. Staminodes absent.

Fruit

Fruits globular, about 44-53 x 43-52 mm. Seed about 30-39 x 30-41 mm. Cotyledons pink.

Seedlings

First pair of leaves elliptic to lanceolate, about 80-120 x 20-36 mm, narrowly acuminate at the apex, green on the underside. At the tenth leaf stage: leaves narrowly elliptic, apex long acuminate, base attenuate, glabrous; oil dots small, numerous, visible with a lens. Seed germination time 55 to 76 days.

Distribution and Ecology

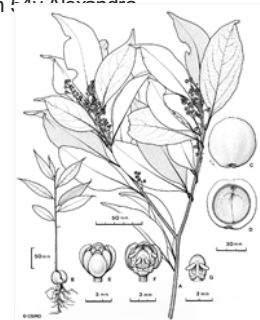
Endemic to NEQ, restricted to the area between Cape Tribulation and the Daintree River. Altitudinal range probably very small, from near sea level to 10 m. Grows in well developed lowland rain forest.

Natural History & Notes

This species grows large enough to produce millable logs but the species is not utilized largely because of its rarity. Wood specific gravity 0.79. Hyland (1989).

RFK Code

759



Habit, flower, anther & glands, fruit, seedling. © CSIRO



Scale bar 10mm. © CSIRO



10th leaf stage. © CSIRO



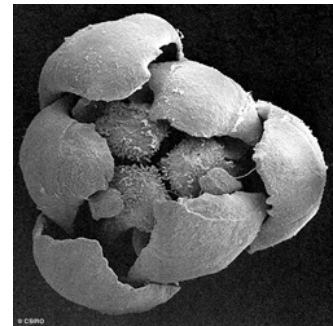
1st leaf stage. © CSIRO



Cotyledon and 1st leaf stage, hypogeal germination. © CSIRO



Cotyledon stage, hypogeal germination. © CSIRO



Flower, bird's-eye view, tepals & 3 anthers. © CSIRO



Flower, side view. © CSIRO

