

Ipomoea trichosperma Blume

Family:

Convolvulaceae

Blume, C.L. von (1826) *Bijdragen tot de Flora van Nederlandsch Indie* 13: 710.

Stem

A slender, glabrous vine; pseudo-stipules absent.

Leaves

Leaves simple; petiole 4.5-12 cm long; leaf lamina broadly elliptic to circular in outline, 6-17 x 6-16 cm, deeply 3-lobed; base deeply cordate, apex acuminate.

Flowers

Flowers solitary; peduncle 2-14 cm; pedicel 1-3 cm long; sepals broadly elliptic to circular, unequal; corolla white, 11-14 cm long, glabrous, the tube slender and 8-9 cm long and flared at distal end to ca. 10 cm across.

Fruit

Capsule broadly ovoid to globular, 2.5-3 cm long, glabrous. Seeds with dense brown hairs, particularly on the edges.

Seedlings

Features not available.

Distribution and Ecology

Occurs in WA. Grows in vine thickets. Also recorded from Indonesia and East Timor.

Natural History & Notes

Description from Flora of the Kimberley Region.

RFK Code

2715



Leaf and fruit. © R.L. Barrett



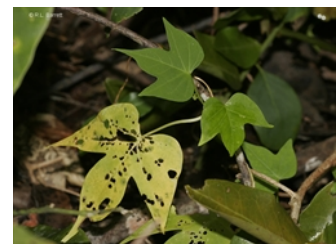
Fruit. © R.L. Barrett



Dehiscent fruit. © R.L. Barrett



Seed. © R.L. Barrett



Leaves. © R.L. Barrett



Habit. © R.L. Barrett



Web edition hosted at <https://apps.lucidcentral.org/rainforest>