

Meiogyne heteropetala (F.Muell.) D.C.Thomas, Chaowasku & R.M.K.Saunders

Family:

Annonaceae

Xue, B., Thomas, D.C., Chaowasku, T., Johnson, D.M. & Saunders, R.M.K. (2014) *Systematic Botany* 39(2): 401.

Common name:

Orange Annona

Stem

Usually grows into a small tree, not exceeding 30 cm dbh, but usually flowers and fruits as a shrub.

Leaves

Leaf blades about 4.5-12 x 2-7.5 cm. Oil dots visible with a lens. Petioles very short. Younger twigs hairy. Twig bark fibrous when stripped. Oak grain in the twigs.

Flowers

Flowers dark maroon to almost black. Sepals triangular, about 5-6 x 3 mm. Petals densely clothed in prostrate hairs. Outer petals about 25-40 mm long. Inner petals about 6-8 mm long. Inner surface of petals dotted with purple glands. Anthers brown, filaments pink. Ovaries 1-5, clothed in simple hairs.

Fruit

Fruiting carpels +/- sessile, about 20-25 x 10-15 mm, densely clothed in simple erect hairs. Seeds about 7 x 5 mm, usually about four per carpel. Embryo minute.

Seedlings

First pair of leaves alternate, simple and ovate. Oil dots visible with a lens. At the tenth leaf stage: leaves elliptic to ovate with a few pale hairs on the upper surface along the midrib; oil dots very small, just visible with a lens. Seed germination time 64 days.

Distribution and Ecology

Endemic to Queensland, occurs in NEQ, CEQ and southwards towards south eastern Queensland. Altitudinal range from near sea level to 100 m. Grows in drier lowland rain forest and monsoon forest.

Natural History & Notes

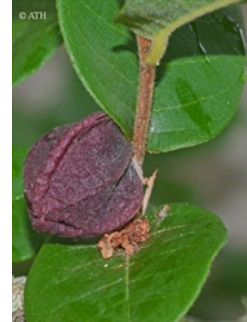
Food plant for the larval stages of the Green Spotted Triangle and the Pale Green Triangle Butterflies. Sankowsky & Neilsen (2000).

Synonyms

Fitzalania heteropetala (F.Muell.) F.Muell., *Fragmenta Phytographiae Australiae* 4: 34 (1864). **Uvaria heteropetala** F.Muell., *Fragmenta Phytographiae Australiae* 3: 1(1862), Type: In insulis Cumberland Islands. Eug. Fitzalan. **Saccopetalum bidwillii** Benth., *Flora Australiensis* 1: 53(1863), Type: Queensland. Wide Bay, Bidwill.

RFK Code

851



Flower. CC-BY ATH

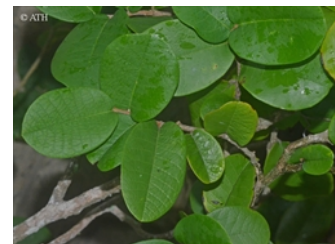


Dissected flower. CC-BY J.L.

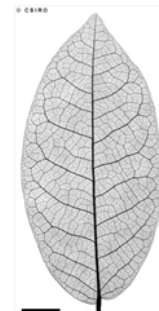
Dowe



Leaves and fruit. CC-BY ATH



Leaves. CC-BY ATH



Scale bar 10mm. © CSIRO



10th leaf stage. © CSIRO



Web edition hosted at <https://apps.lucidcentral.org/rainforest>