

Phacellothrix cladochaeta (F.Muell.) F.Muell.

Family:

Asteraceae

Mueller, F.J.H. von (1881) *Fragmenta Phytographiae Australiae* 11(93): 49.

Stem

Annual decumbent to erect herb. Stems 20-36 cm tall, loosely woolly.

Leaves

Leaves sessile, oblong to narrowly-lanceolate, abaxial leaf surface covered in long white woolly hairs, adaxial surface sparsely hairy, 3-6 x 0.4-0.6 cm.

Flowers

Inflorescence terminal, 5-18 cm long, axis woolly. Involucral bracts hayline with dark basal medial line, 4-6 mm long. Corolla yellow.

Fruit

Pappus white, in a single whorl 1.5-2 mm long; achene brown, oblong-cylindrical. Seed covered in white pearl-like sessile glands.

Seedlings

Features not available.

Distribution and Ecology

Occurs in NT, CYP, NEQ and CEQ. Altitudinal range from 10-880 m. Found in rainforest margins, open Eucalypt forest, and in various types of woodland, wooded grassland and dune scrub.

Synonyms

***Helichrysum cladochaetum* F.Muell.**, *Fragmenta Phytographiae Australiae* 5(32): 199(1865), Type: In proximitate promontorii Cape York. Daemel.

RFK Code

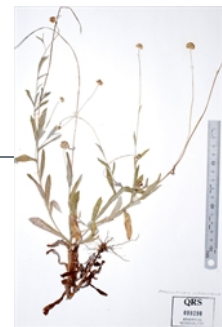
4186



Flowers. © G. Sankowsky

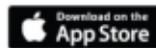


Leaves and buds. © G. Sankowsky



Herbarium specimen. © CSIRO

Copyright © CSIRO 2020, all rights reserved.



Web edition hosted at <https://apps.lucidcentral.org/rainforest>