

Salacia disepala (C.T.White) Ding Hou

Family:

Celastraceae

Ding Hou (1964) *Blumea* 12: 36.

Common name:

Lolly vine

Stem

Usually grows as a vine but sometimes flowers and fruits as a shrub. Vine stem diameters to 10 cm recorded. Concentric rings of pink bark included in the wood when viewed in transverse section. A thin yellow or mustard-coloured layer is often visible just under the dead bark.

Leaves

Stipules small and inconspicuous, caducous, triangular, from less than 1 mm long to 1.5 mm long. Leaf blades about 5-20 x 2.5-8.5 cm, petioles about 0.6-1 cm long, grooved or channelled on the upper surface. Lateral veins curving but not forming loops inside the blade margin. Tendrils formed from expanding shoots and leafy twigs.

Flowers

Pedicels about 4-6 mm long. Calyx mucronate at the bud stage, calyprate, splitting longitudinally into two equal orbicular lobes. Petals about 3-4.2 mm long. Ovules 2 per locule.

Fruit

Fruits globular, about 25-40 mm diam. Seeds globular or hemispherical, about 20 mm diam. Cotyledons completely fused together, radicle very small.

Seedlings

Usually about 6-10 cataphylls produced before the first true leaves. Stipules small and inconspicuous, about 1 mm long, +/- toothed or lobed at the apex. At the tenth leaf stage: cataphylls present among the leaves. Midrib raised on the upper surface of the leaf blade. Lateral veins curving and forming fairly definite loops inside the blade margin. Stipules very small, visible with a lens. Roots orange coloured. Seed germination time 17 to 32 days.

Distribution and Ecology

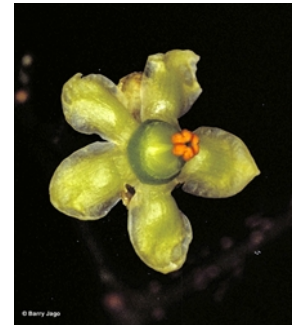
Endemic to Queensland, occurs in CYP and NEQ. Altitudinal range from near sea level to 750 m. Grows in well developed lowland and upland rain forest on a variety of substrates.

Synonyms

Salacicratea disepala C.T.White, *Proceedings of the Royal Society of Queensland* 55: 61(1944), Type: Boonjee, near Malanda, alt. 2,400 feet, common in rain forest, S.T. Blake 15188 (type: flowers), August 1943.

RFK Code

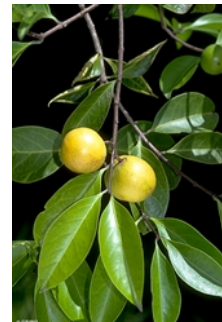
2058



© Barry Jago



Flowers. © CSIRO



Leaves and fruit. © CSIRO



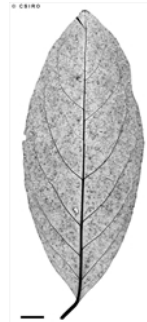
Fruit, side view, cross section and seed. © W. T. Cooper



Fruit, side views, cross section and seed. © W. T. Cooper



Leaves and Flowers. © CSIRO



Scale bar 10mm. © CSIRO



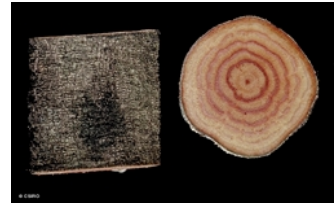
Cotyledon stage, hypogeal germination. © CSIRO



10th leaf stage. © CSIRO



Vine stem bark and vine stem transverse section. © CSIRO



Vine stem bark and vine stem transverse section. © CSIRO



Web edition hosted at <https://apps.lucidcentral.org/rainforest>