

# *Solanum dunalianum* Gaudich.

## Family:

Solanaceae

Gaudichaud-Beaupre, C. (1829) *Botanique* 11: 448, pl. 58. Lectotype: Moluccas, Pisang, [December 1818]. C. Gaudichaud-Beaupre s.n. (lecto: P).

## Stem

Shrub to 4 m tall, a rhizomatous perennial.

## Leaves

Leaves ovate to elliptic, margin entire, lamina ca. 13-23 long x 4.3-7.5 cm wide, apex acute, base cuneate, upper and lower surfaces without prickles; petiole 1-1.8 cm long.

## Flowers

Inflorescence axillary, 2-branched, common peduncle 5-8 mm long, rachis prickles absent; n 15-25-flowered, all flowers bisexual and 4 or 5-merous; pedicels 4-7 mm long at flowering. Corolla mauve, 7-9 mm long, deeply lobed, inner surface sparsely stellate hairy; ovary glabrous; style 7-8 mm long, erect, with stellate hairs.

## Fruit

Fructing calyx with lobes less than half length of mature fruit, prickles absent. Mature fruits 3-13 per inflorescence, globular, 8-9 mm diameter, red, 1-locular, mesocarp juicy, succulent; pedicels 8-16 mm long in fruit; seeds pale yellowm 2-2.7 mm long.

## Seedlings

Features not available.

## Distribution and Ecology

Occurs in CYP, recorded from near Weipa and once on Thursday Island. Altitudinal range from near sea level to 50 m. Grows in or on the edge of vine forests. Also occurs in Malesia on some eastern Indonesian islands and New Guinea.

## Natural History & Notes

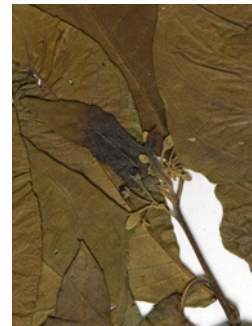
Considered a Vulnerable species in Queensland as it is known from only a few locations, all of which are outside of conservation reserves.

## RFK Code

3663



Herbarium specimen: buds, flowers and fruit. © Australian Tropical Herbarium



Herbarium specimen: leaves, buds and immature fruit. © Australian Tropical Herbarium



Herbarium specimen. © Australian Tropical Herbarium

Copyright © CSIRO 2020, all rights reserved.



Web edition hosted at <https://apps.lucidcentral.org/rainforest>