

Thismia yorkensis Cribb

Family:

Thismiaceae

Cribb, A.B. (1995) *Queensland Naturalist* 33: 51. Type: Queensland, 16 km. ENE Heathlands Ranger Station, 11 May 1992, A.B. Cribb (?); Holo: BRI.

Common name:

Fairy lantern

Stem

Plants 4-6.5 cm tall (including the flower or fruit), stem mainly subterranean, 1.5-3 mm diameter. Root system coralloid.

Leaves

Scale leaves white, without chlorophyll, usually 3 per 'plant'. Each leaf ca. lanceolate, sessile, 2-6 x 1.5-3 mm, appressed to the stem.

Flowers

Flowers 13-20 mm long. Perianth segments fused together except for three holes 1.5-2 mm diam, each with a basal flap. Perianth with 6 longitudinal ribs. Stamens pendulous, ca. 5 mm long. Ovary 3-4 mm diam. Placentas 3, ovules numerous. Style + stigma 1.5-2 mm long.

Fruit

Features not available.

Seedlings

Features not available.

Distribution and Ecology

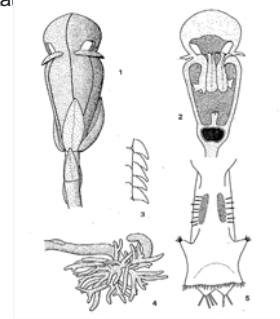
Occurs in CYP. Known only from a single collection made 16 km east, northeast of Heathlands. Altitudinal range not known, specimen collected at about 150 m.

Natural History & Notes

Plants lack chlorophyll and obtain carbohydrates from other plants by accessing fungal mycorrhizal networks.

RFK Code

6043



1: flower x4.5; 2: flower in sectional view x4.5; 3: surface cells on outer side of stamen x170; 4: root system x4.5; 5: inner side of stamen x20. © Queensland Naturalist Journal

Copyright © CSIRO 2020, all rights reserved.



Web edition hosted at <https://apps.lucidcentral.org/rainforest>