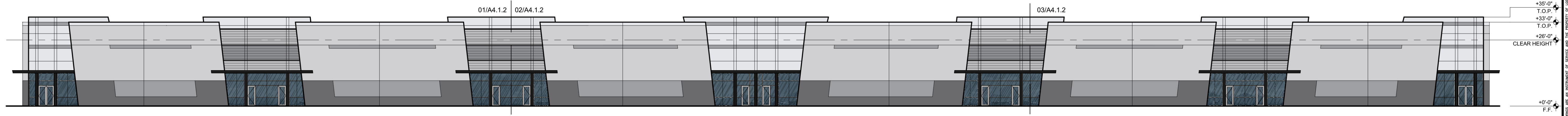


GENERAL NOTES:

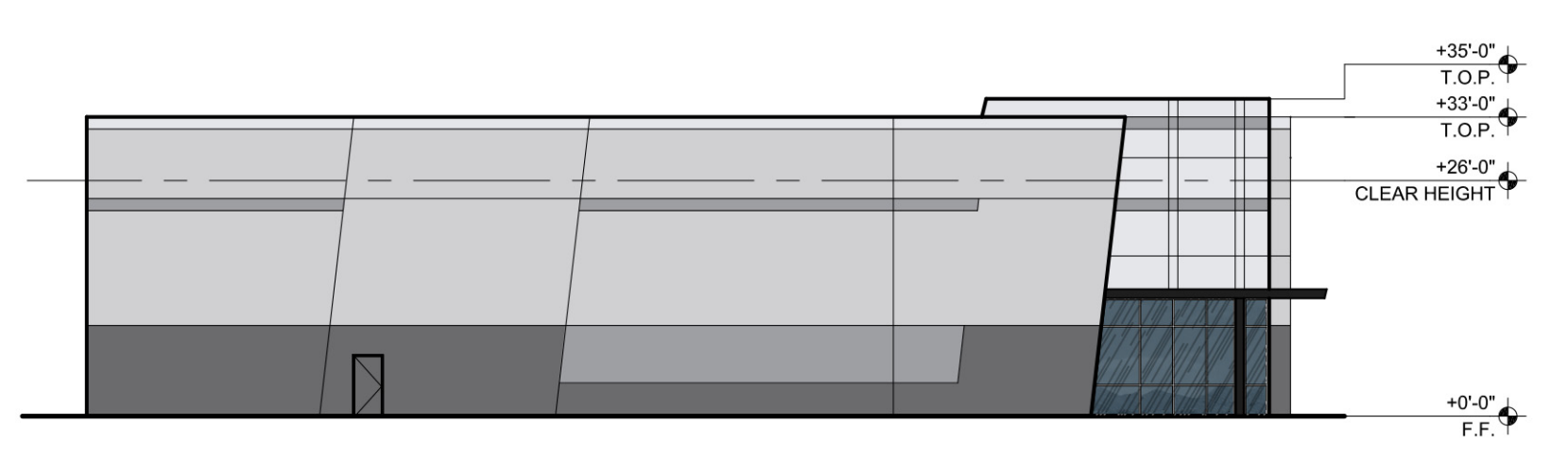
1. SEE ENLARGED ELEVATIONS FOR MATERIAL SELECTION

**MS-FALCON (LLC)
BUILDINGS A**

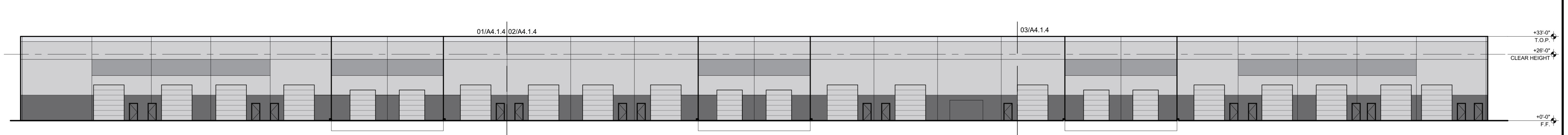
HIGLEY ROAD & INDIGO STREET
MESA, AZ. 85205



01 OVERALL EAST ELEVATION
SCALE: 1" = 20'-0"



02 OVERALL SOUTH ELEVATION
SCALE: 1" = 20'-0"



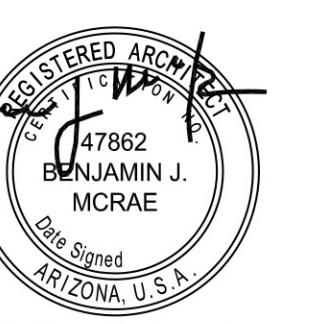
04 OVERALL WEST ELEVATION
SCALE: 1" = 20'-0"



03 OVERALL NORTH ELEVATION
SCALE: 1" = 20'-0"



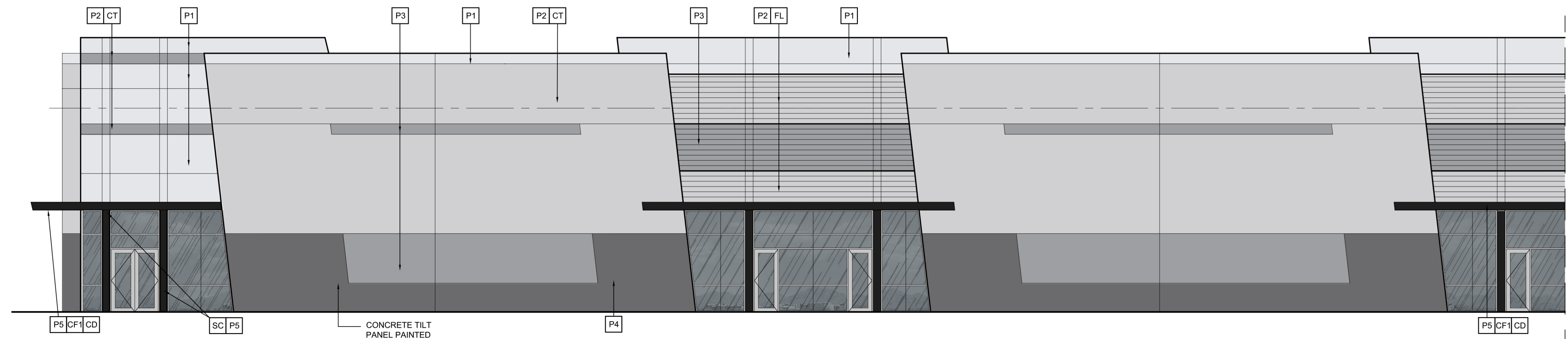
NUMBER	REVISION	DATE



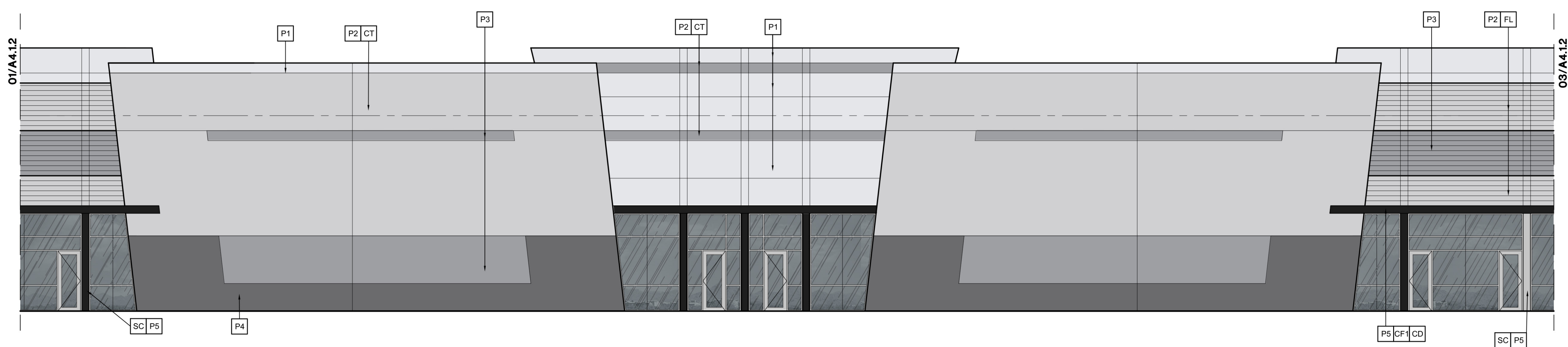
EXPIRES: 06/30/2020

SHEET TITLE:
OVERALL EXTERIOR ELEVATIONS
ISSUE DATE: XX-XX-XX
DRAWN BY: KAW/JPM
CHECKED BY: BJM
PROJECT No.:

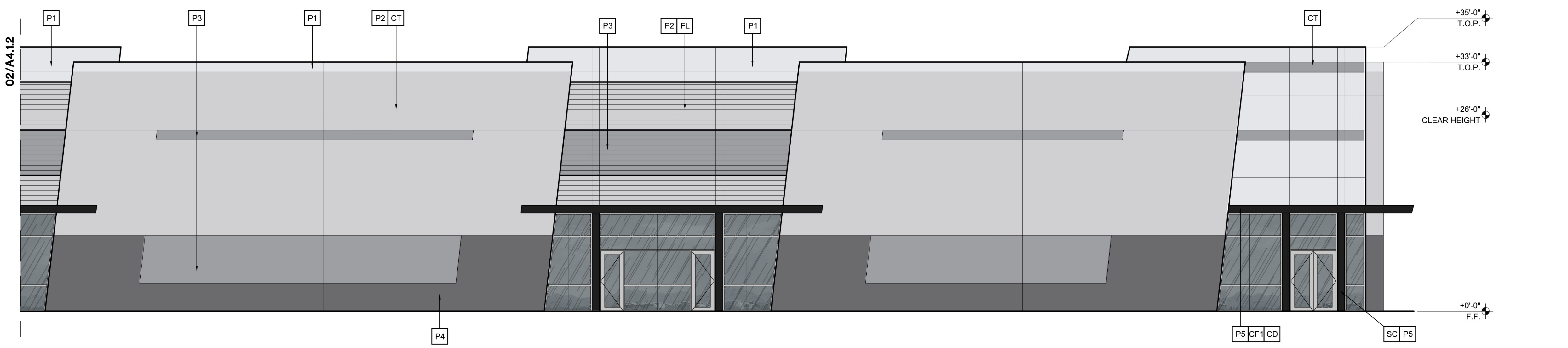
SHEET:
A4.1.1



01 ENLARGED EAST ELEVATION PART A
SCALE: 1/8" = 1'-0"



02 ENLARGED EAST ELEVATION PART B
SCALE: 1/8" = 1'-0"



03 ENLARGED EAST ELEVATION PART C
SCALE: 1/8" = 1'-0"

GENERAL NOTES:

- SEE STRUCTURAL DRAWINGS FOR LINTEL INFORMATION.
- SEE DOOR SCHEDULE FOR ROLL-UP DOOR HEIGHTS.
- SEE STRUCTURAL DRAWINGS FOR CONTROL JOINT LOCATIONS.

MATERIAL/FINISH SCHEDULE:

KEY:	DESCRIPTION:
CT	CONCRETE TILT PANEL
FL	CONCRETE PANEL W/ FORM-LINER PAINTED

CANOPY KEY:

KEY:	DESCRIPTION:
CF1	12" STEEL 'C' CHANNEL CANOPY FRAME - PAINTED
CD	STEEL B-DECK PAINTED W/ INTEGRATED GUTTER
SC	12" WIDE STEEL WIDE FLANGE COLUMN MEMBERS

GLAZING KEY:

MATERIAL:	DESCRIPTION:
FRAMES	ARCADIA CLEAR ANODIZED ALUMINUM STOREFRONT
GLAZING	1" GRAY REFLECTIVE INSULATED GLAZING

PAINT KEY:

KEY:	DESCRIPTION:
P1	DUNN EDWARDS #DE6358 "Vapor"
P2	DUNN EDWARDS #DE6359 "Silver Setting"
P3	DUNN EDWARDS #DE6361 "Baby Seal"
P4	DUNN EDWARDS #DE6355 "Tarnished Silver"
P5	DUNN EDWARDS #DE6357 "Black Tie"

PAINTING NOTES:

- PAINTER TO PROVIDE FOUR COLOR SCHEME WITH ALL DECORATIVE BANDS MASKED AND PAINTED IN COLORS TO BE SELECTED.
- SEALANTS FOR THE PROJECT TO MATCH ADJACENT MATERIAL COLORS - NO WHITE OR OFF WHITE COLORS.
- PAINTER TO PREPARE SAMPLES WITH APPROPRIATE COLOR TO BE APPROVED BY OWNER PRIOR TO APPLICATION ON BUILDING FACADES.
- PAINTER TO PROVIDE TWO COATS OF SEALER TO ALL EXPOSED NATURAL BLOCK, PRECAST CONCRETE, UNPAINTED CONCRETE AND OTHER MATERIALS AS REQUIRED TO PROVIDE A WEATHER SEALED PROJECT.



NUMBER	REVISION	DATE



SHEET TITLE:
EXTERIOR ELEVATIONS

ISSUE DATE: 09-25-17

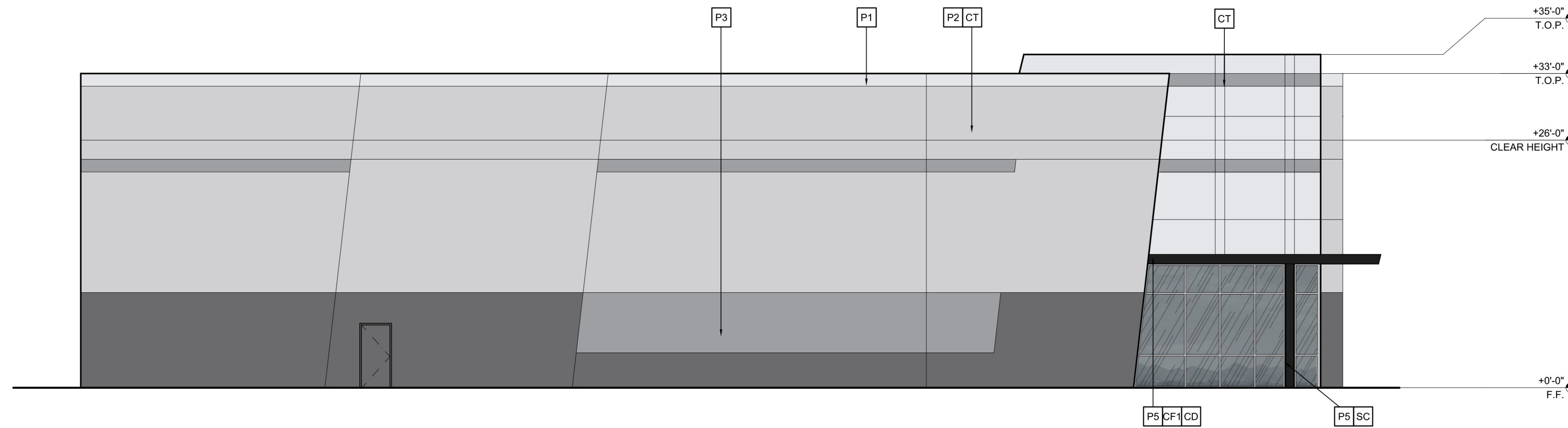
DRAWN BY: KAW/JPM

CHECKED BY: BJM

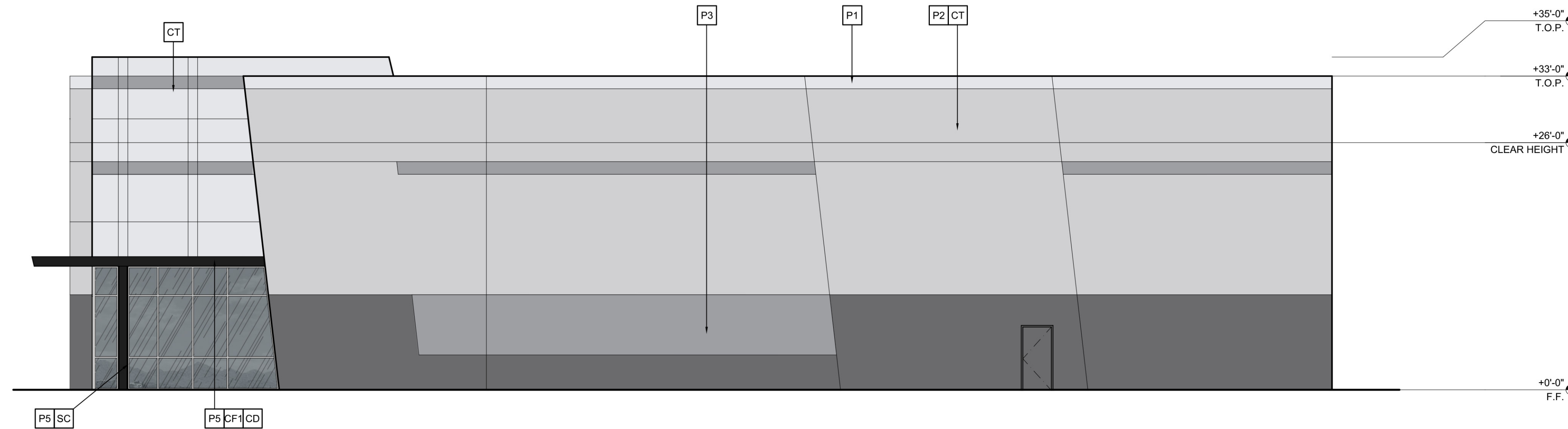
PROJECT No.: _____

SHEET:

A4.1.2



01 ENLARGED SOUTH ELEVATION
SCALE: 1/8" = 1'-0"



02 ENLARGED NORTH ELEVATION
SCALE: 1/8" = 1'-0"

GENERAL NOTES:

1. SEE STRUCTURAL DRAWINGS FOR LINTEL INFORMATION.
2. SEE DOOR SCHEDULE FOR ROLL-UP DOOR HEIGHTS.
3. SEE STRUCTURAL DRAWINGS FOR CONTROL JOINT LOCATIONS.

MATERIAL/FINISH SCHEDULE:

KEY:	DESCRIPTION:
CT	CONCRETE TILT PANEL
FL	CONCRETE PANEL W/ FORM-LINER PAINTED

CANOPY KEY:

KEY:	DESCRIPTION:
CF1	12" STEEL 'C' CHANNEL CANOPY FRAME - PAINTED
CD	STEEL B-DECK PAINTED W/ INTERGRATED GUTTER
SC	12" WIDE STEEL WIDE FLANGE COLUMN MEMBERS

GLAZING KEY:

MATERIAL:	DESCRIPTION:
FRAMES	ARCADIA CLEAR ANODIZED ALUMINUM STOREFRONT
EXTERIOR GLAZING	1" GRAY REFLECTIVE INSULATED GLAZING

PAINT KEY:

KEY:	DESCRIPTION:
P1	DUNN EDWARDS #DE6358 "Vapor"
P2	DUNN EDWARDS #DE6359 "Silver Setting"
P3	DUNN EDWARDS #DE6361 "Baby Seal"
P4	DUNN EDWARDS #DE6355 "Tarnished Silver"
P5	DUNN EDWARDS #DE6357 "Black Tie"

PAINTING NOTES:

1. PAINTER TO PROVIDE FOUR COLOR SCHEME WITH ALL DECORATIVE BANDS MASKED AND PAINTED IN COLORS TO BE SELECTED.
2. SEALANTS FOR THE PROJECT TO MATCH ADJACENT MATERIAL COLORS - NO WHITE OR OFF WHITE COLORS.
3. PAINTER TO PREPARE SAMPLES WITH APPROPRIATE COLOR TO BE APPROVED BY OWNER PRIOR TO APPLICATION ON BUILDING FACADES.
4. PAINTER TO PROVIDE TWO COATS OF SEALER TO ALL EXPOSED NATURAL BLOCK, PRECAST CONCRETE, UNPAINTED CONCRETE AND OTHER MATERIALS AS REQUIRED TO PROVIDE A WEATHER SEALED PROJECT.

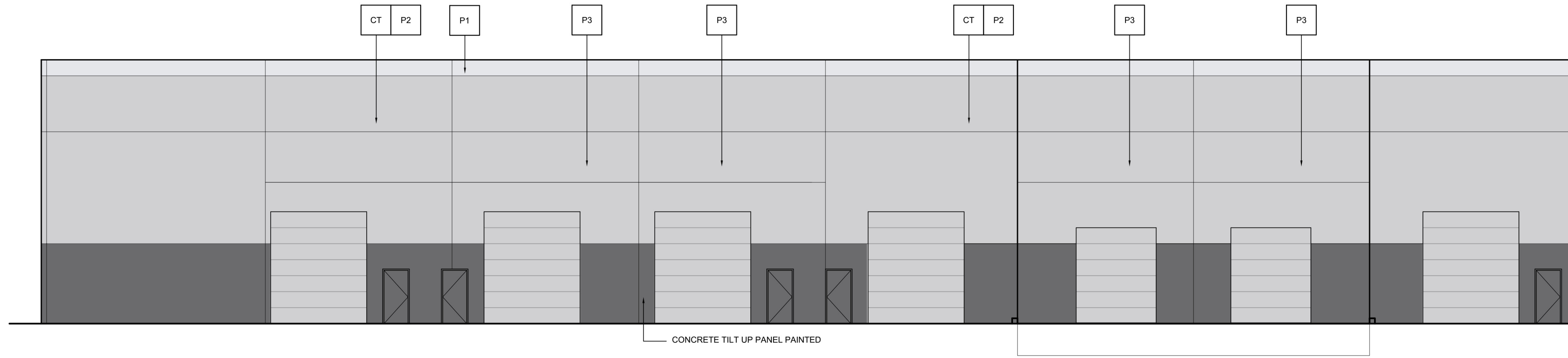


NUMBER	REVISION	DATE

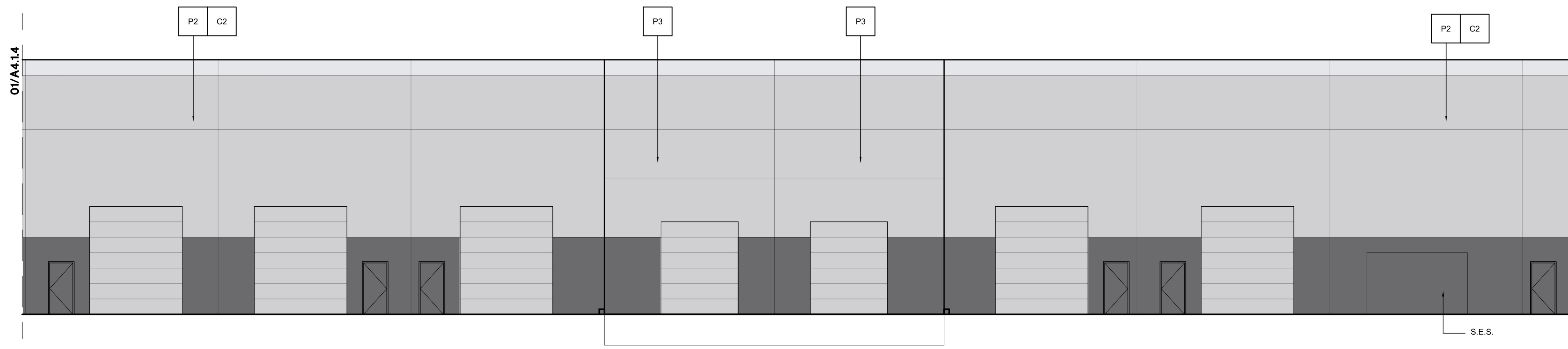


SHEET TITLE: EXTERIOR ELEVATIONS
 ISSUE DATE: 09-25-17
 DRAWN BY: KAW/JPM
 CHECKED BY: BJM
 PROJECT No.:
 SHEET:

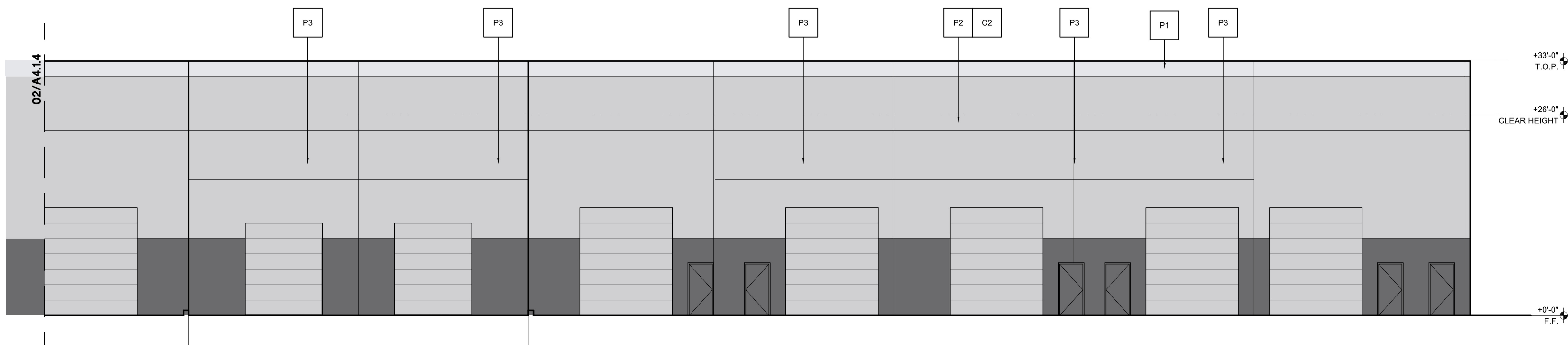
A4.1.3



01 ENLARGED WEST ELEVATION PART A
SCALE: 1/8" = 1'-0"



02 ENLARGED WEST ELEVATION PART B
SCALE: 1/8" = 1'-0"



03 ENLARGED WEST ELEVATION PART C
SCALE: 1/8" = 1'-0"

GENERAL NOTES:

- SEE STRUCTURAL DRAWINGS FOR LINTEL INFORMATION.
- SEE DOOR SCHEDULE FOR ROLL-UP DOOR HEIGHTS.
- SEE STRUCTURAL DRAWINGS FOR CONTROL JOINT LOCATIONS.

MATERIAL/FINISH SCHEDULE:

KEY:	DESCRIPTION:
CT	CONCRETE TILT PANEL
FL	CONCRETE PANEL W/ FORM-LINER PAINTED

CANOPY KEY:

KEY:	DESCRIPTION:
CF	12" STEEL 'C' CHANNEL CANOPY FRAME - PAINTED
CD	STEEL B-DECK PAINTED W/ INTERGRATED GUTTER
SC	12" WIDE STEEL WIDE FLANGE COLUMN MEMBERS

GLAZING KEY:

MATERIAL:	DESCRIPTION:
FRAMES	ARCADIA CLEAR ANODIZED ALUMINUM STOREFRONT
GLAZING	1" GRAY REFLECTIVE INSULATED GLAZING

PAINT KEY:

KEY:	DESCRIPTION:
P1	DUNN EDWARDS #DE6358 "Vapor"
P2	DUNN EDWARDS #DE6359 "Silver Setting"
P3	DUNN EDWARDS #DE6361 "Baby Seal"
P4	DUNN EDWARDS #DE6355 "Tarnished Silver"
P5	DUNN EDWARDS #DE6357 "Black Tie"

PAINTING NOTES:

- PAINTER TO PROVIDE FOUR COLOR SCHEME WITH ALL DECORATIVE BANDS MASKED AND PAINTED IN COLORS TO BE SELECTED.
- SEALANTS FOR THE PROJECT TO MATCH ADJACENT MATERIAL COLORS - NO WHITE OR OFF WHITE COLORS.
- PAINTER TO PREPARE SAMPLES WITH APPROPRIATE COLOR TO BE APPROVED BY OWNER PRIOR TO APPLICATION ON BUILDING FACADES.
- PAINTER TO PROVIDE TWO COATS OF SEALER TO ALL EXPOSED NATURAL BLOCK, PRECAST CONCRETE, UNPAINTED CONCRETE AND OTHER MATERIALS AS REQUIRED TO PROVIDE A WEATHER SEALED PROJECT.



NUMBER	REVISION	DATE



SHEET TITLE:	EXTERIOR ELEVATIONS
ISSUE DATE:	09-25-17
DRAWN BY:	KAW/JPM
CHECKED BY:	BJM
PROJECT No.:	



MS Falcon A

Mesa, Arizona
2017 . 09 . 25

LGE | DESIGNGROUP

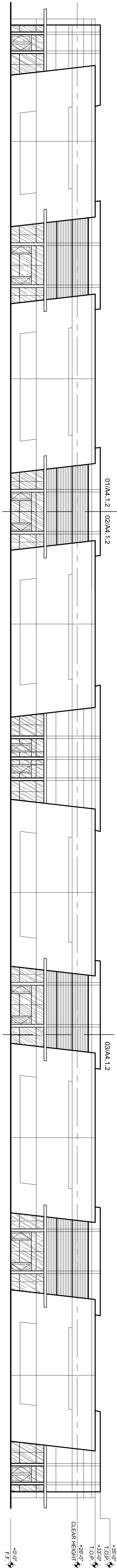
RENDERING VIEW

This artist rendering is for conceptual design only and should not be referred to as a construction document.

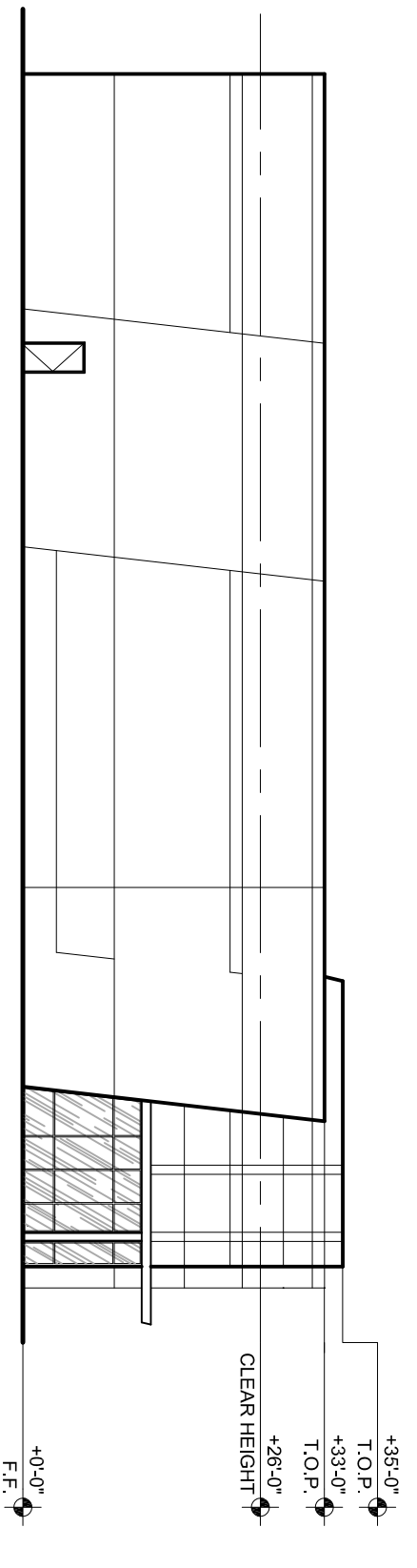
THESE DRAWINGS ARE AN INSTRUMENT OF SERVICE AND THE PROPERTY OF LGE DESIGN GROUP AND LGE DESIGN BUILD AND SHALL REMAIN THEIR PROPERTY. THE USE OF THIS DRAWING SHALL BE RESTRICTED TO THE ORIGINAL SITE FOR WHICH IT WAS PREPARED AND PUBLICATION THEREOF IS EXPRESSLY LIMITED TO SUCH.

LGE
DESIGN BUILD

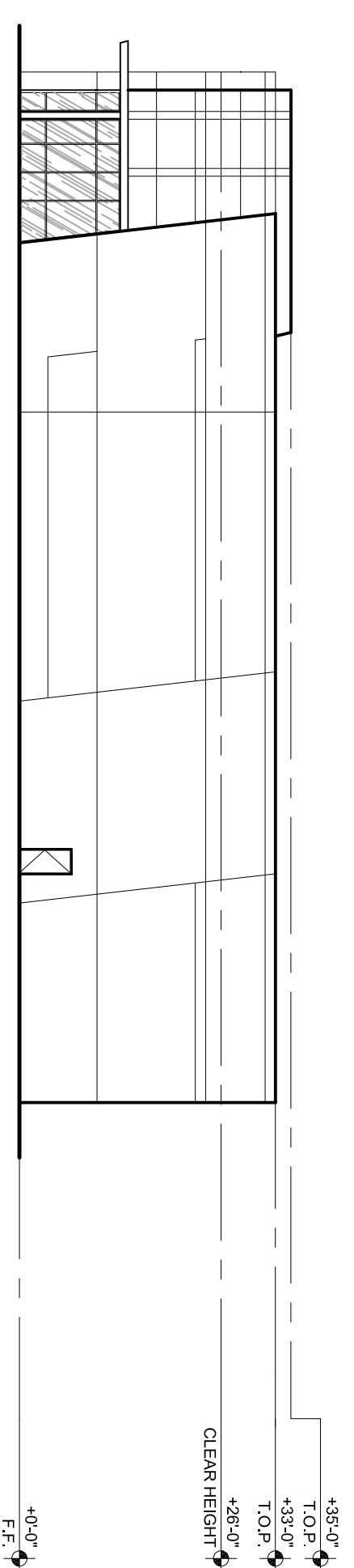
GENERAL NOTES:
1. SEE ENLARGED ELEVATIONS FOR MATERIAL SELECTION



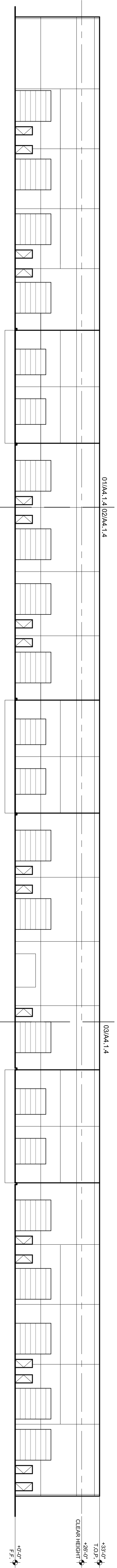
01 OVERALL EAST ELEVATION
SCALE: 1" = 20'-0"



02 OVERALL SOUTH ELEVATION
SCALE: 1" = 20'-0"

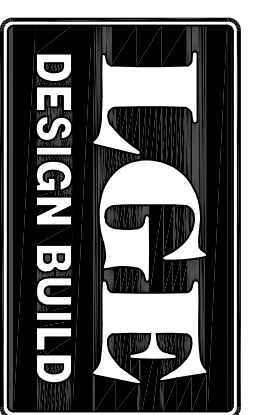


03 OVERALL NORTH ELEVATION
SCALE: 1" = 20'-0"



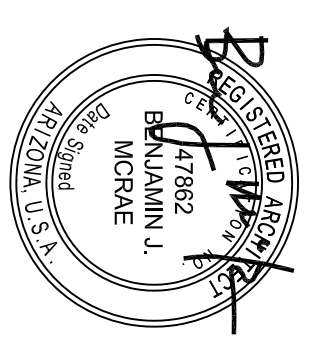
04 OVERALL WEST ELEVATION
SCALE: 1" = 20'-0"

THESE DRAWINGS ARE AN INSTRUMENT OF SERVICE AND THE PROPERTY OF THE DESIGN GROUP AND SHALL REMAIN THEIR PROPERTY. THE USE OF THIS DRAWING SHALL BE RESTRICTED TO THE ORIGINAL SITE FOR WHICH IT WAS PREPARED AND PUBLICATION THEREOF IS EXPRESSLY LIMITED TO SUCH.



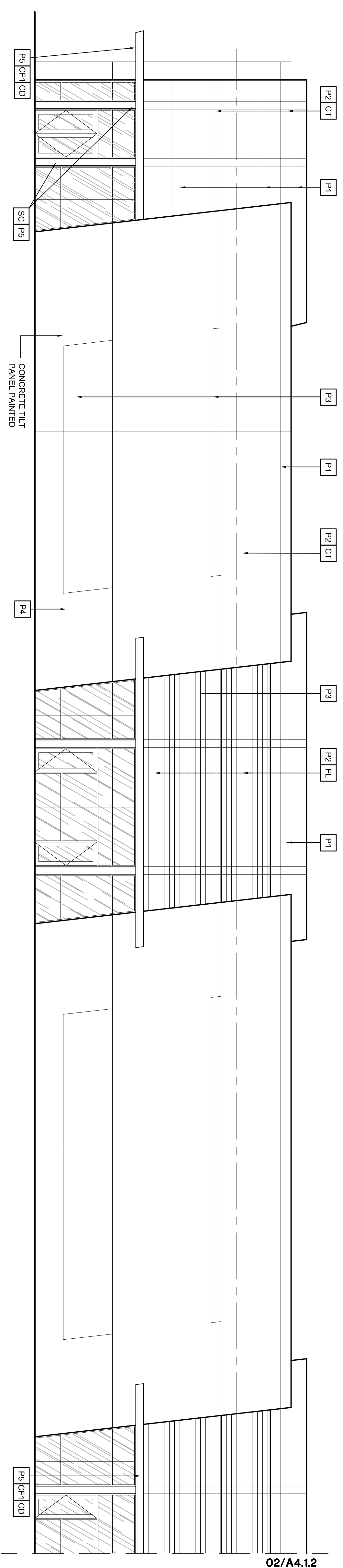
**MS-FALCON (LLC)
BUILDINGS A**
HIGLEY ROAD & INDIGO STREET
MESA, AZ. 85205

LGE DESIGN GROUP
740 N. 52nd Street ■ Phoenix, AZ ■ 85008
P: 480.966.4001

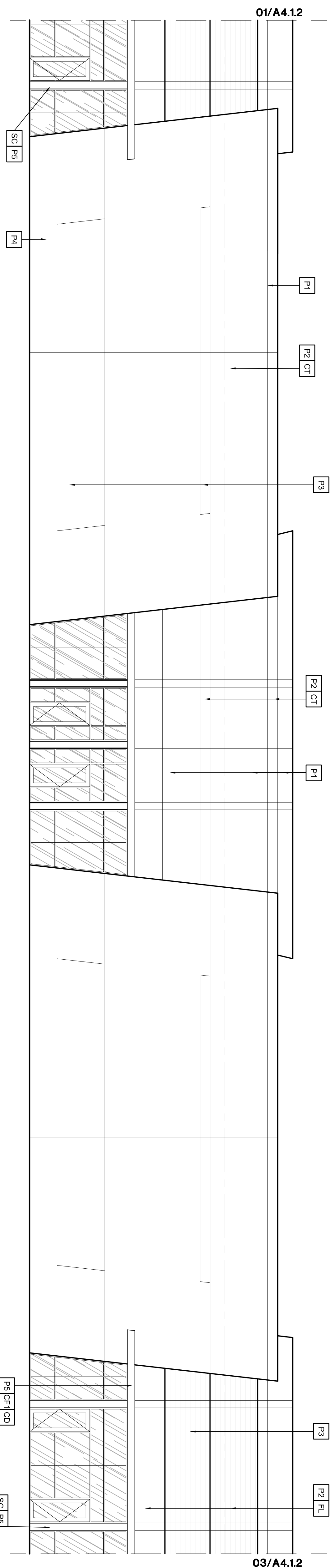


SHEET TITLE:
OVERALL EXTERIOR ELEVATIONS
ISSUE DATE: 08-28-17
DRAWN BY: KAW/JP/M
CHECKED BY: BMM
PROJECT NO.:

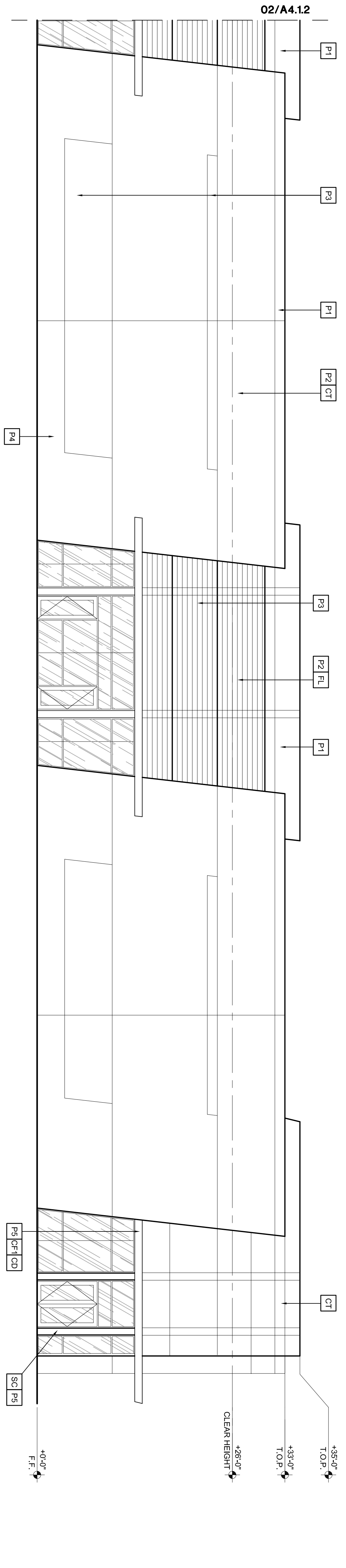
A4.1.1



01 ENLARGED EAST ELEVATION PART A
SCALE: 1/8" = 1'-0"



02 ENLARGED EAST ELEVATION PART B
SCALE: 1/8" = 1'-0"



03 ENLARGED EAST ELEVATION PART C
SCALE: 1/8" = 1'-0"

GENERAL NOTES:

1. SEE STRUCTURAL DRAWINGS FOR LINTEL INFORMATION
2. SEE DOOR SCHEDULE FOR ROLL-UP DOOR HEIGHTS.
3. SEE STRUCTURAL DRAWINGS FOR CONTROL JOINT LOCATIONS.

MATERIAL/FINISH SCHEDULE:

- KEY: DESCRIPTION:
CT CONCRETE TILT PANEL
FL CONCRETE PANEL W/ FORM-LINER PAINTED

CANOPY KEY:

- KEY: DESCRIPTION:
CF1 12" STEEL C CHANNEL CANOPY FRAME - PAINTED
CD STEEL DECK PAINTED W/ INTERGRAINED GUTTER
SC 12" WIDE STEEL WIDE FLANGE COLUMN MEMBERS

GLAZING KEY:

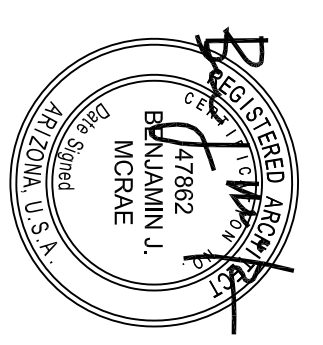
- MATERIAL: DESCRIPTION:
FRAMES ARCADIA CLEAR ANODIZED ALUMINUM STOREFRONT
EXTERIOR 1" GRAY REFLECTIVE GLAZING INSULATED GLAZING

PAINT KEY:

- KEY: DESCRIPTION:
P1 DUNN EDWARDS #DE6358 "Vapor"
P2 DUNN EDWARDS #DE6359 "Silver Satin"
P3 DUNN EDWARDS #DE6361 "Baby Seal"
P4 DUNN EDWARDS #DE6355 "Tinted Silver"
P5 DUNN EDWARDS #DE6357 "Black Tie"

PAINTING NOTES:

1. PAINTER TO PROVIDE FOUR COLOR SCHEME WITH ALL DECORATIVE BANDS MASKED AND PAINTED IN COLORS TO BE SELECTED.
2. SEALANTS FOR THE PROJECT TO MATCH ADJACENT MATERIAL COLORS - NO WHITE OR OFF WHITE COLORS.
3. PAINTER TO PREPARE SAMPLES WITH APPROVED COLOR TO BE APPROVED BY ARCHITECT AND APPLICATION ON BUILDING FACADES.
4. PAINTER TO PROVIDE TWO COATS OF SEALER TO ALL EXPOSED NATURAL BLOCK, PRECAST CONCRETE, UNPAINTED BLOCK AND CONCRETE SURFACES AS REQUIRED TO PROVIDE A WEATHER SEALED PROJECT.



EXPIRES 08/30/2020

GENERAL NOTES:

1. SEE STRUCTURAL DRAWINGS FOR LINTEL INFORMATION
2. SEE DOOR SCHEDULE FOR ROLL-UP DOOR HEIGHTS.
3. SEE STRUCTURAL DRAWINGS FOR CONTROL JOINT LOCATIONS.

MATERIAL/FINISH SCHEDULE:

- KEY: DESCRIPTION:
- CT CONCRETE TILT PANEL
 - FL CONCRETE PANEL W/ FORM-LINER PAINTED

CANOPY KEY:

- KEY: DESCRIPTION:
- CF1 12" STEEL C CHANNEL CANOPY FRAME - PAINTED
 - CD STEEL DECK PAINTED W/ INTERGRATED GUTTER
 - SC 12" WIDE STEEL WIDE FLANGE COLUMN MEMBERS

GLAZING KEY:

- MATERIAL: DESCRIPTION:
- FRAMES ARCADIA CLEAR ANODIZED ALUMINUM STOREFRONT
 - EXTERIOR 1" GRAY REFLECTIVE GLAZING INSULATED GLAZING

PAINT KEY:

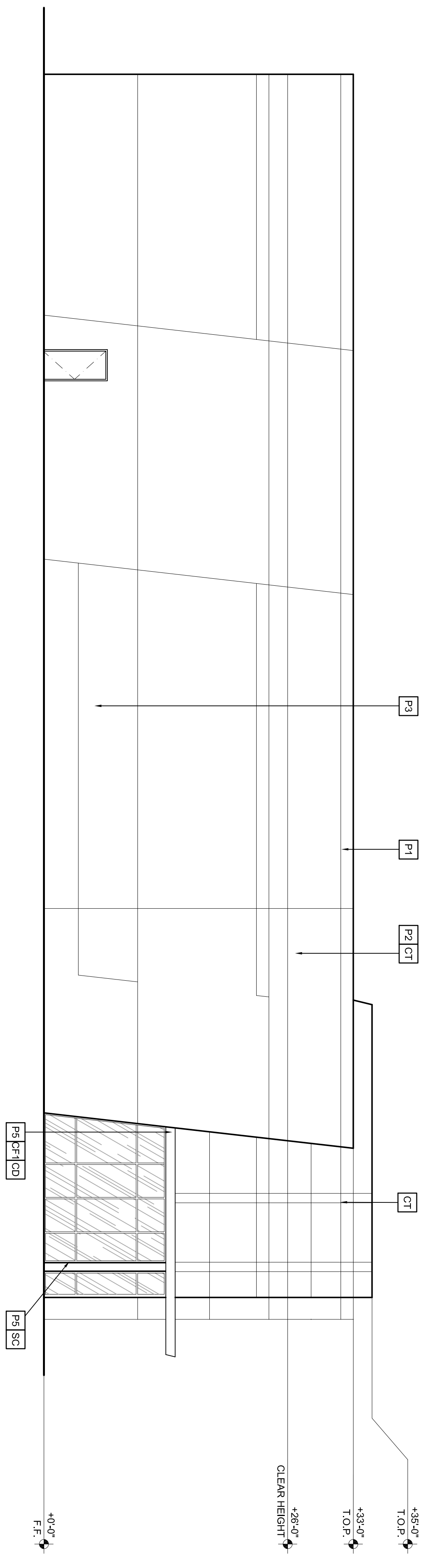
- KEY: DESCRIPTION:
- P1 DUINN EDWARDS #DE6358 "Vapor"
 - P2 DUINN EDWARDS #DE6359 "Silver Satin"
 - P3 DUINN EDWARDS #DE6361 "Baby Seal"
 - P4 DUINN EDWARDS #DE6355 "Tarnished Silver"
 - P5 DUINN EDWARDS #DE6357 "Black Tie"

PAINTING NOTES:

1. PAINTER TO PROVIDE FOUR COLOR SCHEME WITH ALL DECORATIVE BANDS MASKED AND PAINTED IN COLORS TO BE SELECTED.
2. SEALANTS FOR THE PROJECT TO MATCH ADJACENT MATERIAL COLORS - NO WHITE OR OFF WHITE COLORS.
3. PAINTER TO PREPARE SAMPLES WITH APPROXIMATE COLOR TO BE APPROVED BY ARCHITECT PRIOR TO APPLICATION ON BUILDING FACADES.
4. PAINTER TO PROVIDE TWO COATS OF SEALER TO ALL EXPOSED NATURAL BLOCK, PRECAST CONCRETE, UNPAINTED SURFACES. SEALER APPLICATIONS AS REQUIRED TO PROVIDE A WEATHER SEALED PROJECT.

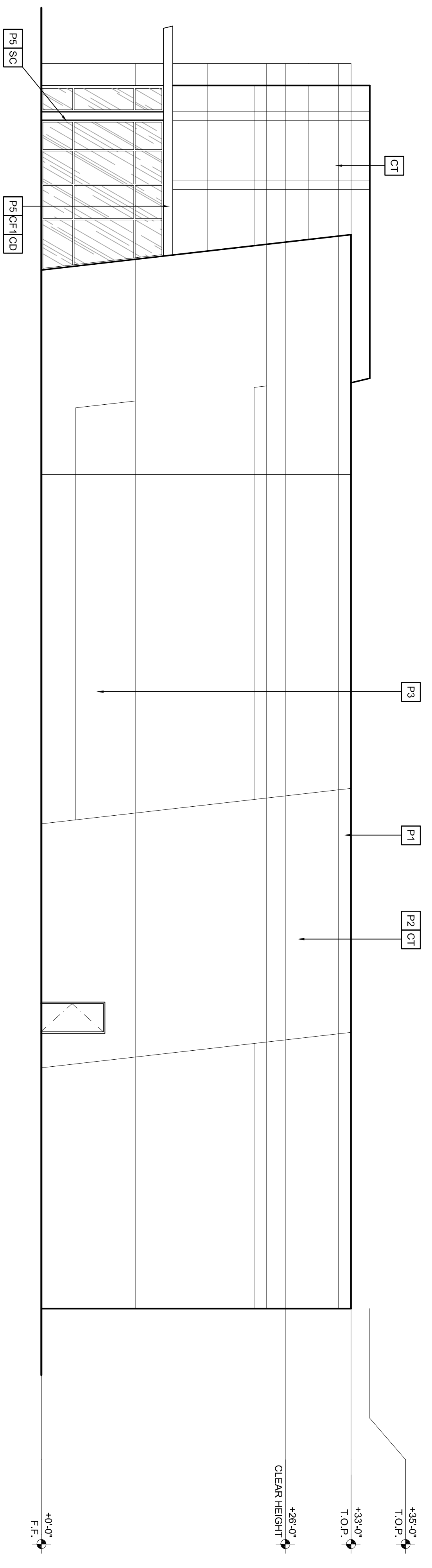
01 ENLARGED SOUTH ELEVATION

SCALE: 1/8" = 1'-0"



02 ENLARGED NORTH ELEVATION

SCALE: 1/8" = 1'-0"

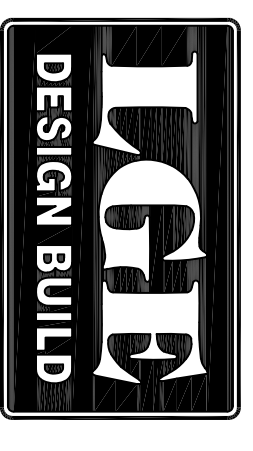


EXPIRES 09/30/2020

SHEET TITLE:
EXTERIOR ELEVATIONS

ISSUE DATE: 08-25-17
DRAWN BY: KAW/JPM
CHECKED BY: BMM
PROJECT NO.:

SHEET:
A4.1.3



MS-FALCON (LLC) BUILDINGS A

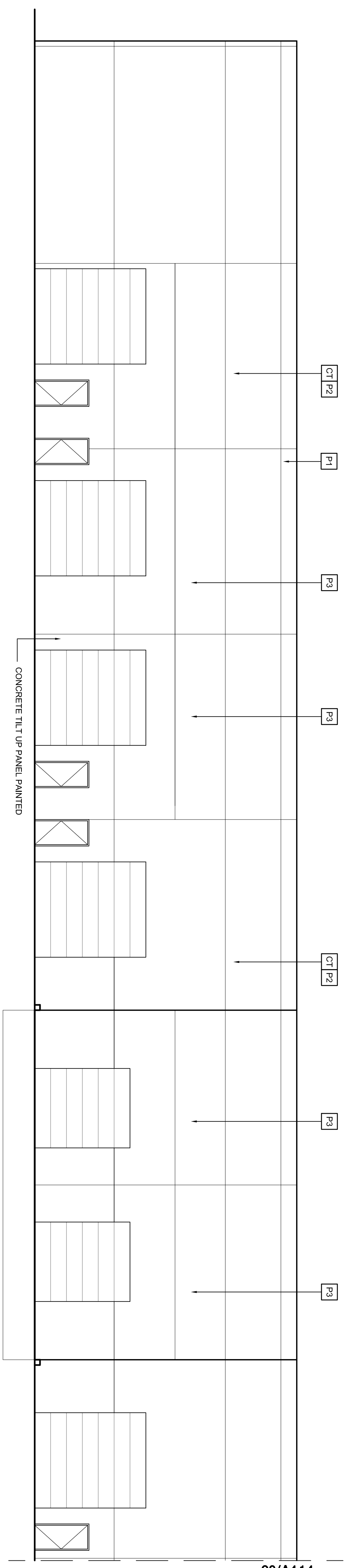
HIGLEY ROAD & INDIGO STREET
MESA, AZ. 85205



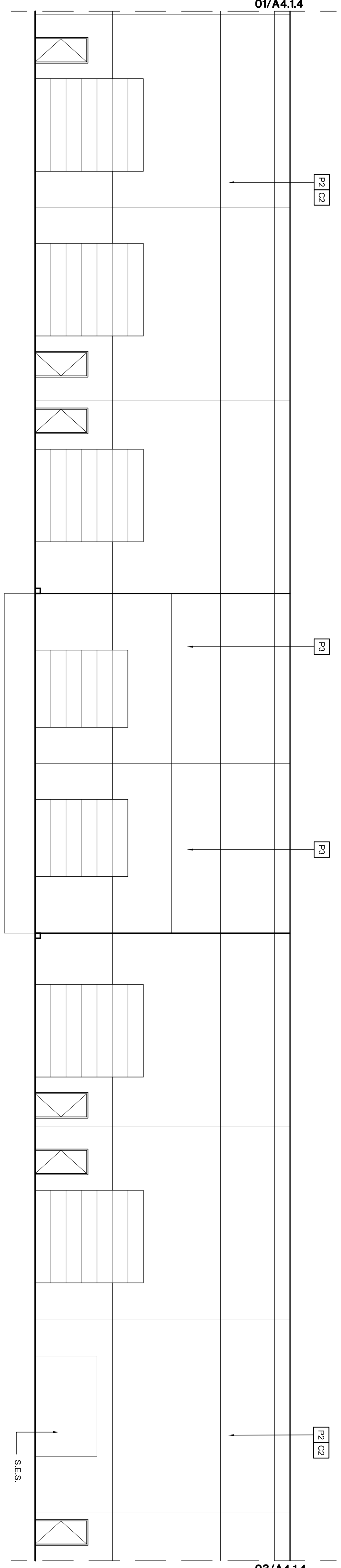
740 N. 52nd Street ■ Phoenix, AZ ■ 85008
P: 480.966.4001

THESE DRAWINGS ARE AN INSTRUMENT OF SERVICE AND THE PROPERTY OF THE DESIGN GROUP AND SHALL REMAIN THEIR PROPERTY. THE USE OF THIS DRAWING SHALL BE RESTRICTED TO THE ORIGINAL SITE FOR WHICH IT WAS PREPARED AND PUBLICATION THEREOF IS EXPRESSLY LIMITED TO SUCH.

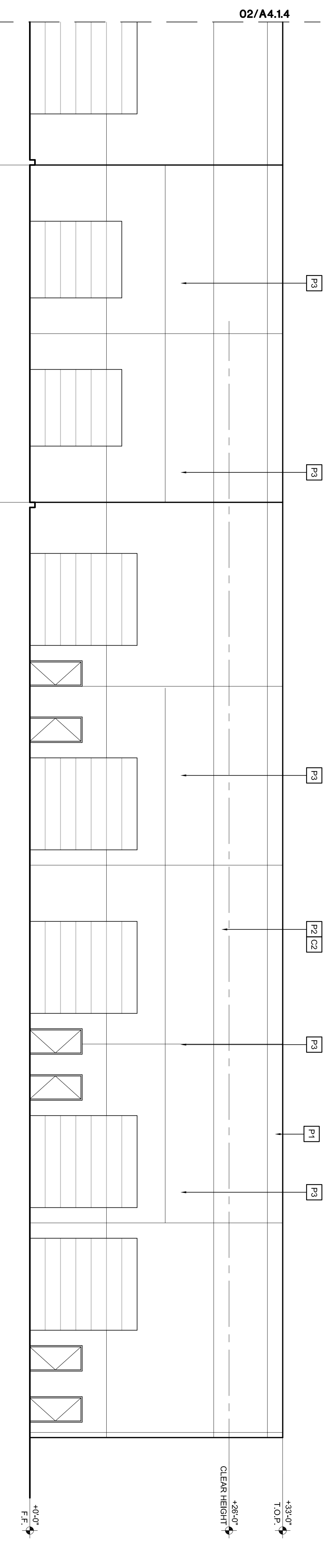
NUMBER	REVISION	DATE



01 ENLARGED WEST ELEVATION PART A
SCALE: 1/8" = 1'-0"



02 ENLARGED WEST ELEVATION PART B
SCALE: 1/8" = 1'-0"



03 ENLARGED WEST ELEVATION PART C
SCALE: 1/8" = 1'-0"

GENERAL NOTES:

1. SEE STRUCTURAL DRAWINGS FOR Lintel INFORMATION.
2. SEE DOOR SCHEDULE FOR ROLL-UP DOOR HEIGHTS.
3. SEE STRUCTURAL DRAWINGS FOR CONTROL JOINT LOCATIONS.

MATERIAL/FINISH SCHEDULE:

KEY:	DESCRIPTION:
CT	CONCRETE TILT UP PANEL
FL	CONCRETE PANEL W/ FORM-LINER PAINTED

CANOPY KEY:

KEY:	DESCRIPTION:
CF1	12" STEEL C CHANNEL CANOPY FRAME - PAINTED
CC	STEEL BEDECK PAINTED W/ INTERSPACED GUTTER
SC	12" WIDE STEEL WIDE FLANGE COLUMN MEMBERS

GLAZING KEY:

MATERIAL:	DESCRIPTION:
FRAMES	ARCADIA CLEAR ANODIZED ALUMINUM
EXTERIOR	1" GRAY REFLECTIVE GLAZING
INSULATED GLAZING	INSULATED GLAZING

PAINT KEY:

KEY:	DESCRIPTION:
P1	DJUNN EDWARDS #DE6358 "Vapor"
P2	DJUNN EDWARDS #DE6359 "Silver Satin"
P3	DJUNN EDWARDS #DE6361 "Baby Seal"
P4	DJUNN EDWARDS #DE6355 "Tinted Silver"
P5	DJUNN EDWARDS #DE6357 "Black Tie"

PAINTING NOTES:

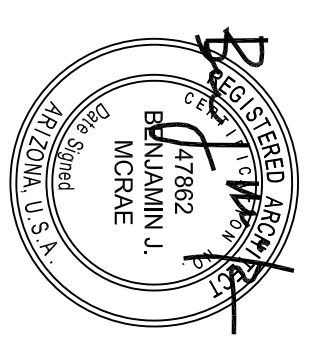
1. PAINTER TO PROVIDE FOUR COLOR SCHEME WITH ALL DECORATIVE BANDS MASKED AND PAINTED IN COLORS TO BE SELECTED.
2. SEALANTS FOR THE PROJECT TO MATCH ADJACENT MATERIAL COLORS - NO WHITE OR OFF WHITE COLORS.
3. PAINTER TO PREPARE SAMPLES WITH APPROVED COLOR TO BE APPROVED BY ARCHITECT AND APPLIED TO BUILDING FACADES.
4. PAINTER TO PROVIDE TWO COATS OF SEALER TO ALL EXPOSED NATURAL BLOCK, PRECAST CONCRETE, UNPAINTED BLOCK AND BRICK SURFACES. SEALERS REQUIRED TO PROVIDE A WEATHER SEALED PROJECT.

THESE DRAWINGS ARE AN INSTRUMENT OF SERVICE AND THE PROPERTY OF THE DESIGN GROUP AND SHALL REMAIN THEIR PROPERTY. THE USE OF THIS DRAWING SHALL BE RESTRICTED TO THE ORIGINAL SITE FOR WHICH IT WAS PREPARED AND PUBLICATION THEREOF IS EXPRESSLY LIMITED TO SUCH.

LGE DESIGN GROUP
740 N. 52nd Street ■ Phoenix, AZ ■ 85008
P: 480.966.4001

MS-FALCON (LLC) BUILDINGS A
HIGLEY ROAD & INDIGO STREET
MESA, AZ. 85205

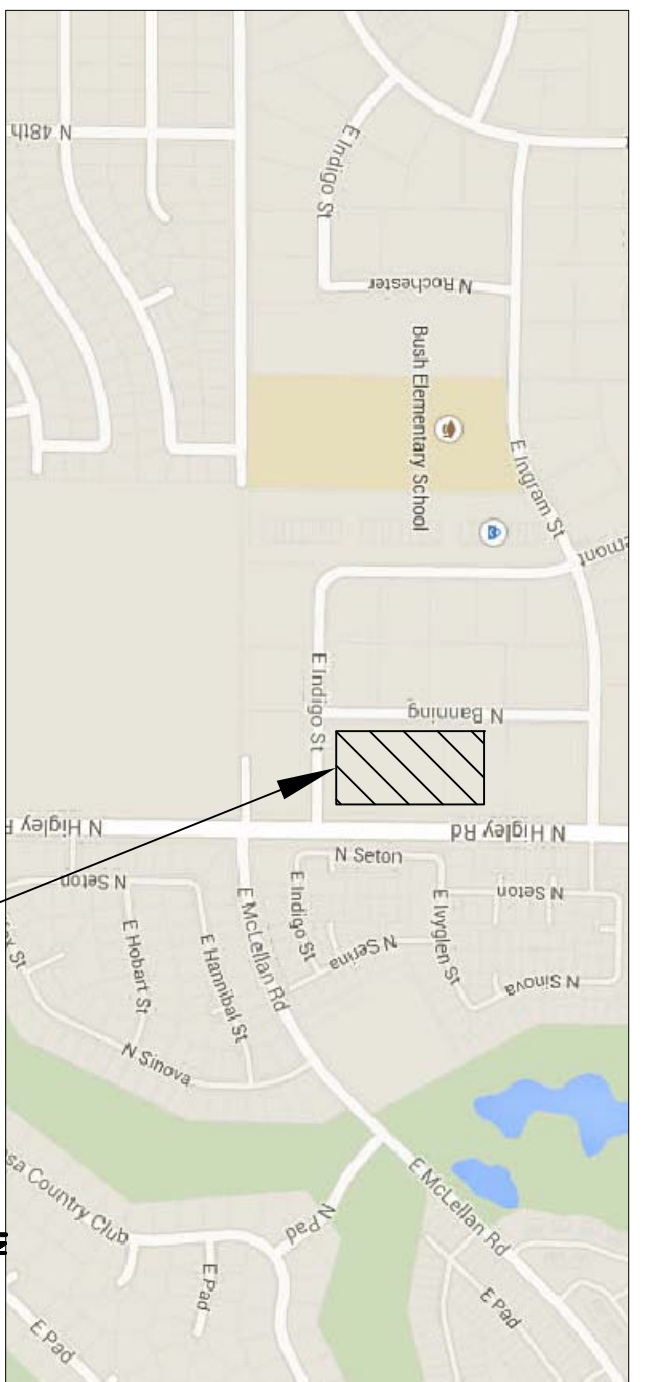
LGBT DESIGN BUILD



EXPIRES 09/30/2020

SHEET TITLE:	02/A4.1.4
EXTENSION:	02/A4.1.4
ISSUE DATE:	08-25-17
DRAWN BY:	KAW/JP/M
CHECKED BY:	BAM
PROJECT NO.:	

A4.1.4



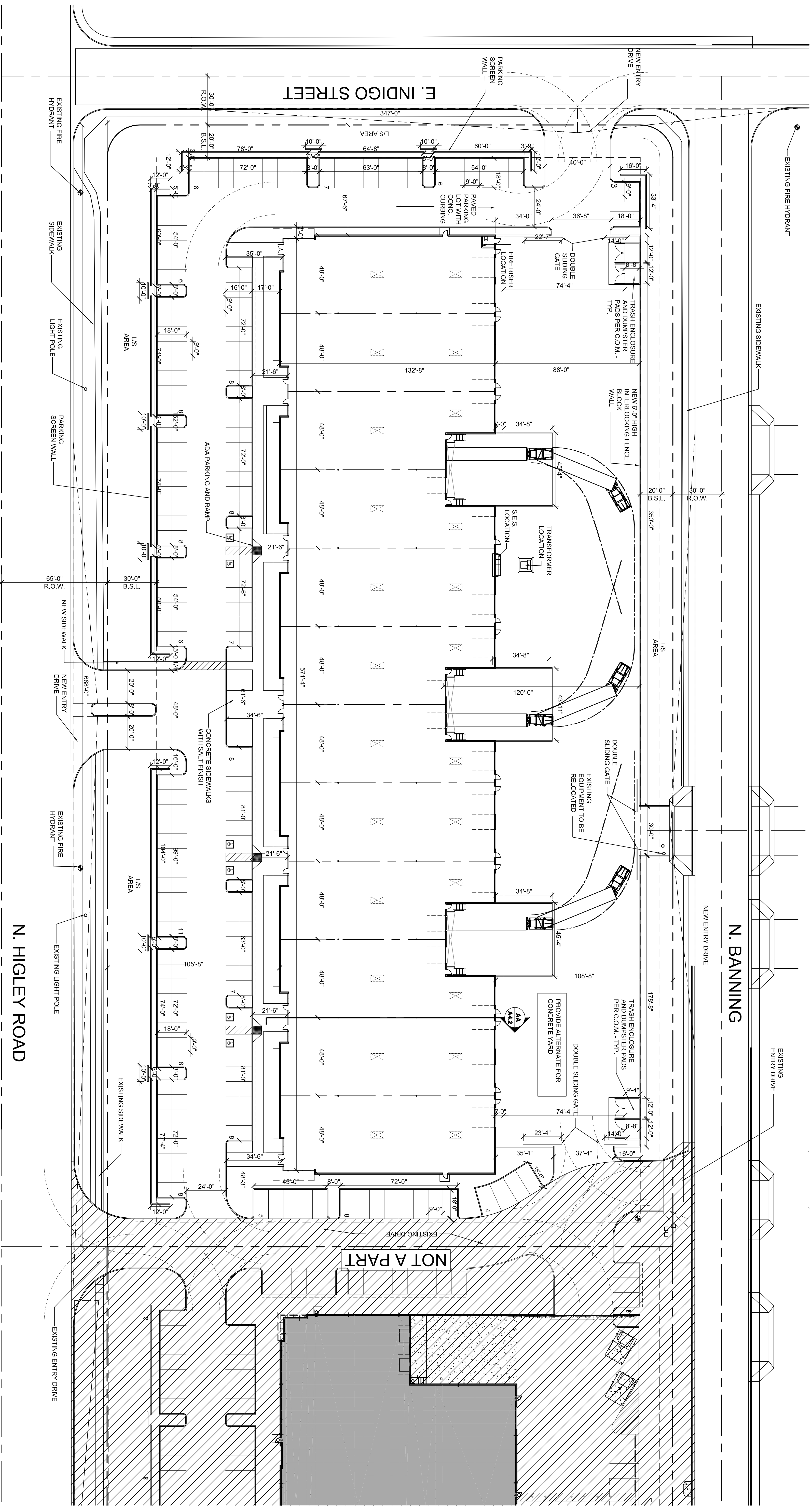
VICINITY MAP PROJECT LOCATION

PROJECT DATA:

OWNER:	MS-FALCON (LLC)
PROJECT ADDRESS:	N HIGLEY ROAD AND INDIGO STREET MESA, AZ
DEVELOPER:	LGE DESIGN BUILD
PROJECT SCOPE:	740 NORTH 52ND STREET PHOENIX, AZ 85008 1 NEW COMMERCIAL WAREHOUSE/OFFICE BUILDINGS
ASSESSOR PARCEL NO.:	141-35094, 141-35093
CURRENT ZONING:	L-1
SITE AREA:	TOTAL: 288,544 S.F. (5.48 AC.)
LANDSCAPE AREA:	TOTAL: 62,549 S.F.
LEGAL DESCRIPTION:	LOTS 2 AND 3, FALCON COMMERCE PARK, ACCORDING TO BOOK 489 OF MAPS PAGE 43 RECORDS OF MARICOPA COUNTY, ARIZONA.

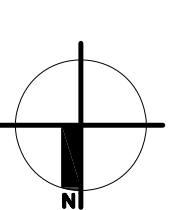
STORIES:	ONE STORY
TOTAL BUILDING S.F.:	71,831 S.F.
MEAN. AZ.:	32.04 %
LOT COVERAGE:	B1/S-1
OCCUPANCY:	WAREHOUSE
CONSTRUCTION TYPE:	IIIb W/ E.S.F.R.
BUILDING HEIGHT:	35'-0"

REQUIRED PARKING CALCS:		
BUILDING A	SQUARE FT.	TOTAL
OCCUPANCY	47-18,000 S.F.	FACTOR
OFFICE	1/1,375 S.F.	48 OCC.
WAREHOUSE	47-53,631 S.F.	1/1,600 S.F.
TOTAL	71,831 S.F.	138 OCC.
PARKING PROVIDED		137
TOTAL REGULAR SPACES		6
TOTAL ACCESSIBLE SPACES		142
PARKING RATIO	1.98 CARS FOR 1,000 S.F.	



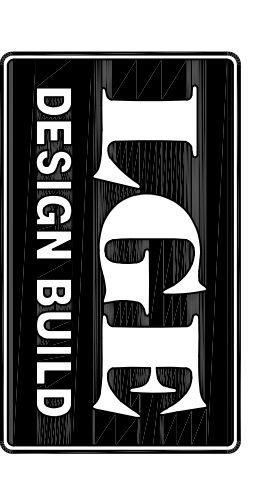
SITE PLAN

SCALE: 1" = 30'-0"



0 30 60 120

THESE DRAWINGS ARE AN INSTRUMENT OF SERVICE AND THE PROPERTY OF THE DESIGN GROUP AND SHALL REMAIN THEIR PROPERTY. THE USE OF THIS DRAWING SHALL BE RESTRICTED TO THE ORIGINAL SITE FOR WHICH IT WAS PREPARED AND PUBLICATION THEREOF IS EXPRESSLY LIMITED TO SUCH.

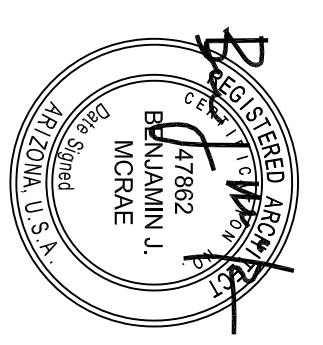


**MS-FALCON (LLC)
BUILDINGS B-C**

HIGLEY ROAD & INDIGO STREET
MESA, AZ. 85205

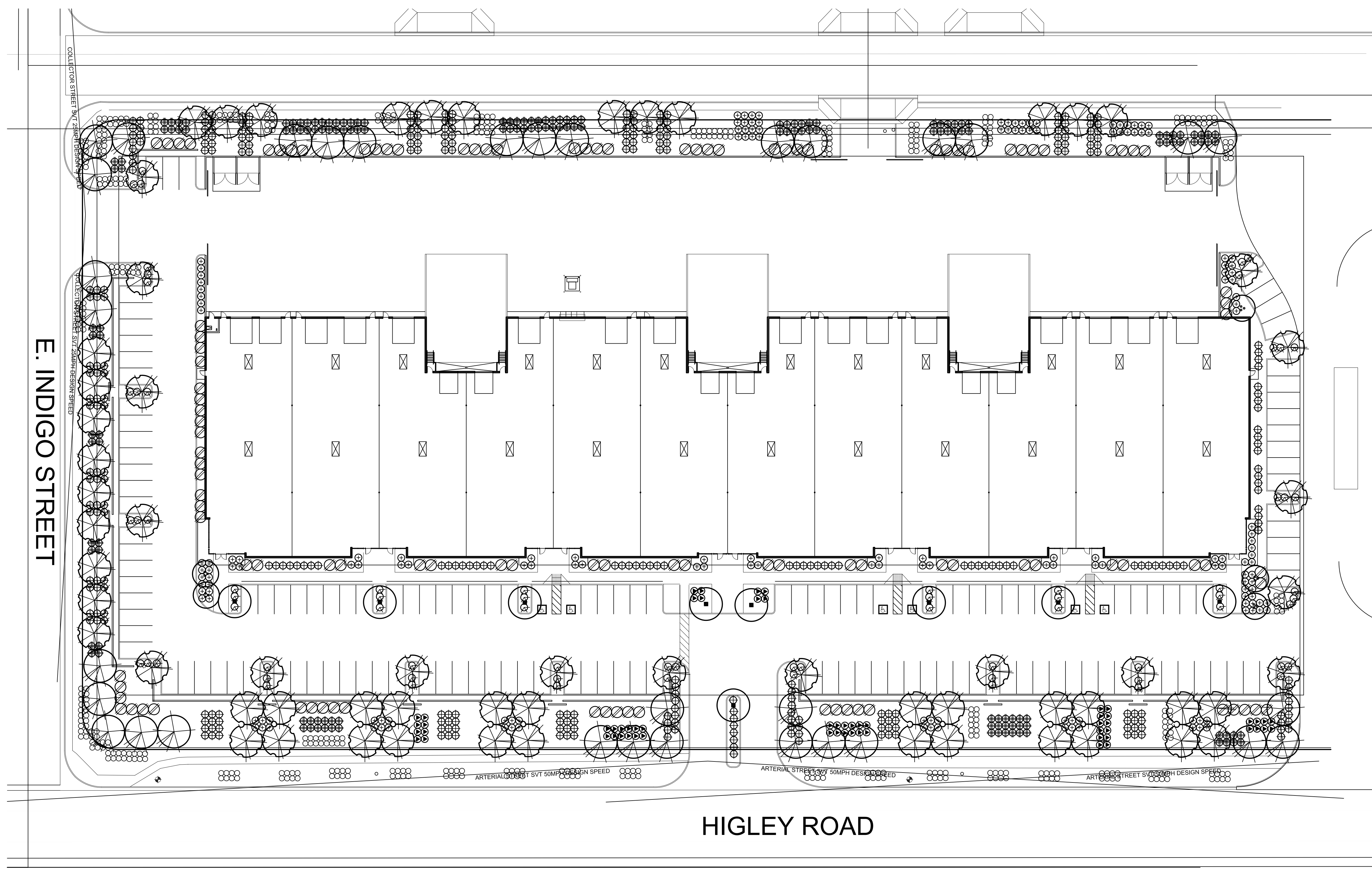


740 N. 52nd Street ■ Phoenix, AZ ■ 85008
P: 480.966.4001



EXPIRES 09/30/2020

SHEET TITLE:	SITE PLAN
ISSUE DATE:	10-30-17
DRAWN BY:	KAW/PM
CHECKED BY:	BAM
PROJECT NO.:	
SHEET:	A.1.1



E. INDIGO STREET

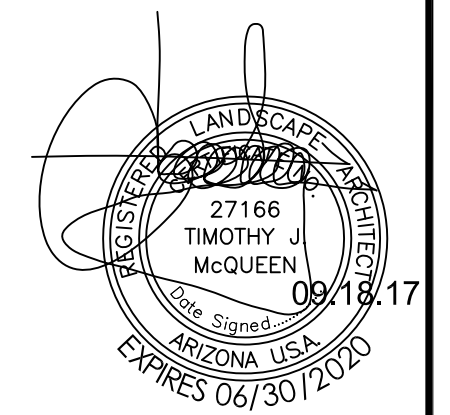
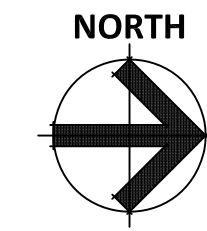
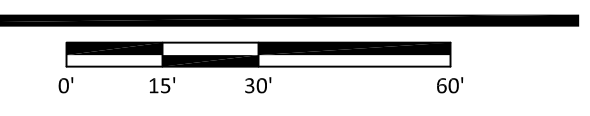
HIGLEY ROAD

LANDSCAPE LEGEND

- | | | | | | | | |
|--|---|--|--|--|--|--|---|
| | QUERCUS VIRGINIANA
LIVE OAK
24" BOX (MATCHING) | | CHITALPA TASHKENSIS
CHITALPA
24" BOX | | DASYLIRION WHEELERII
DESERT SPOON
5 GALLON | | LANTANA MONTEVIDENSIS
'GOLD MOUND'
1 GALLON |
| | ACACIA SALICINA
WILLOW ACACIA
24" BOX | | CAESALPINIA MEXICANA
MEXICAN BIRD OF PARADISE
5 GALLON | | AGAVE GEMNIFLORA
TWINFLOWERED AGAVE
5 GALLON | | LANTANA MONTEVIDENSIS
TRAILING PURPLE
1 GALLON |
| | SOPHORA SECUNDFLORA
TEXAS MOUNTAIN LAUREL
24" BOX | | TECOMA 'ORANGE JUBILEE'
ORANGE JUBILEE
5 GALLON | | RUELLIA PENINSULARIS
BAJA RUELLIA
5 GALLON | | EUPHORBIA RIGENS
GOPHER PLANT
1 GALLON |
| | QUERCUS VIRGINIANA
LIVE OAK
36" BOX (MATCHING) | | HESPERALOE PARVIFLORA
RED YUCCA
5 GALLON | | MUHLENBERGIA 'REGAL MIST'
REGAL MIST DEER GRASS
5 GALLON | | 1/2" SCREENED EXPRESS GOLD
DECOMPOSED GRANITE
2" DEPTH IN ALL LANDSCAPE AREAS |

LANDSCAPE PLAN

SCALE: 1" = 30'-0"



T.J. McQUEEN & ASSOCIATES, INC.
LANDSCAPE ARCHITECTURE
URBAN DESIGN
SITE PLANNING
8433 East Cholla St., Suite 101
Scottsdale, Arizona 85260
P. (602) 265-0320 F. (602) 266-6619
EMAIL: timmqueen@tjma.net



NUMBER	REVISION	DATE

SHEET TITLE:

ISSUE DATE: 09.18.17

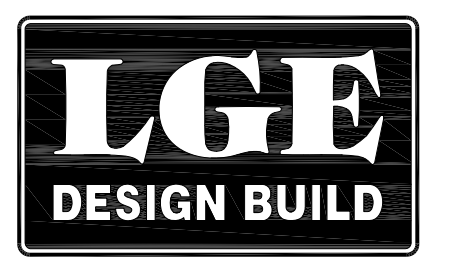
DRAWN BY: KAW/JPM

CHECKED BY: V.J.D.

PROJECT No.:

SHEET:

La.01
1 OF 1



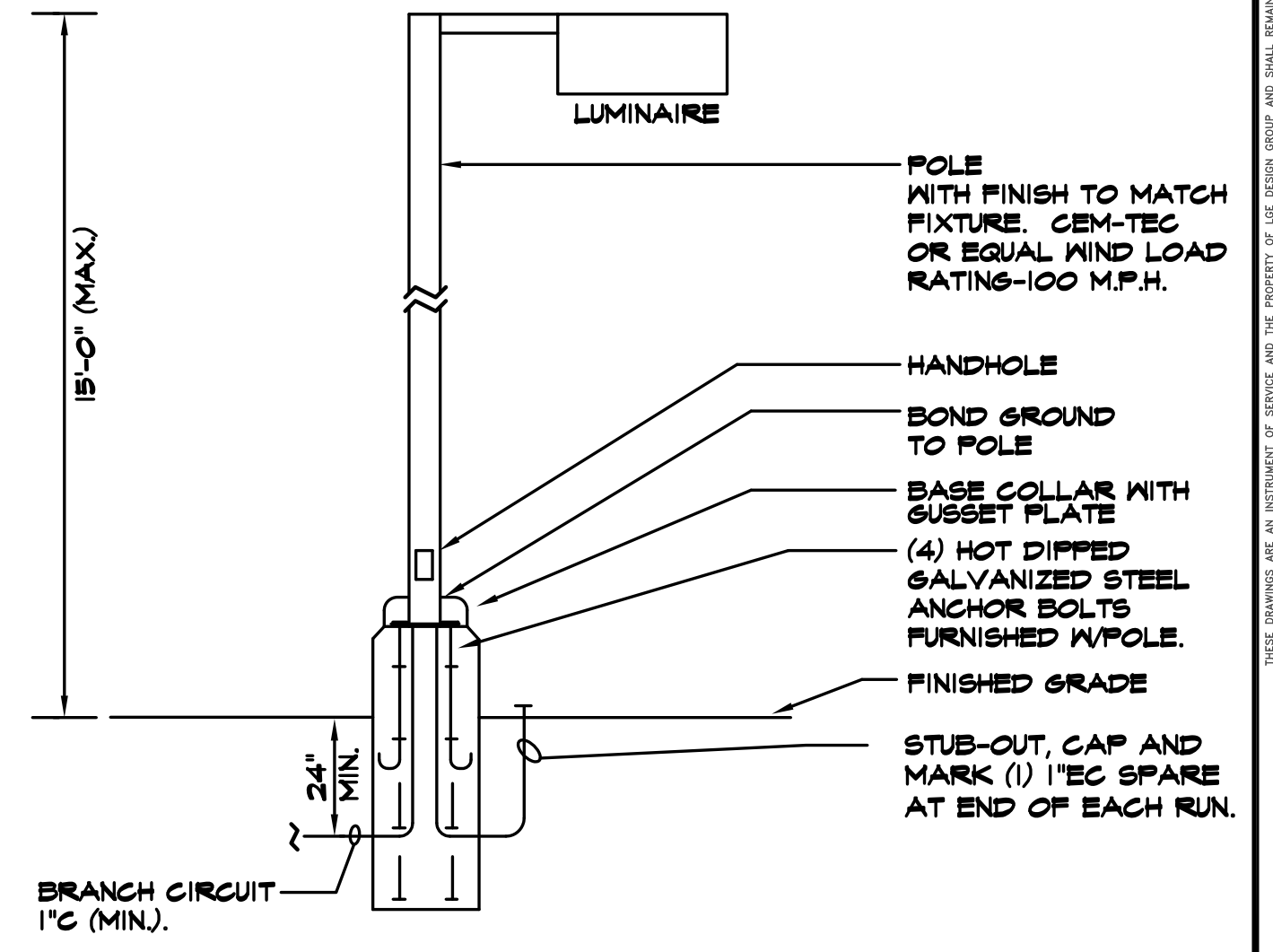
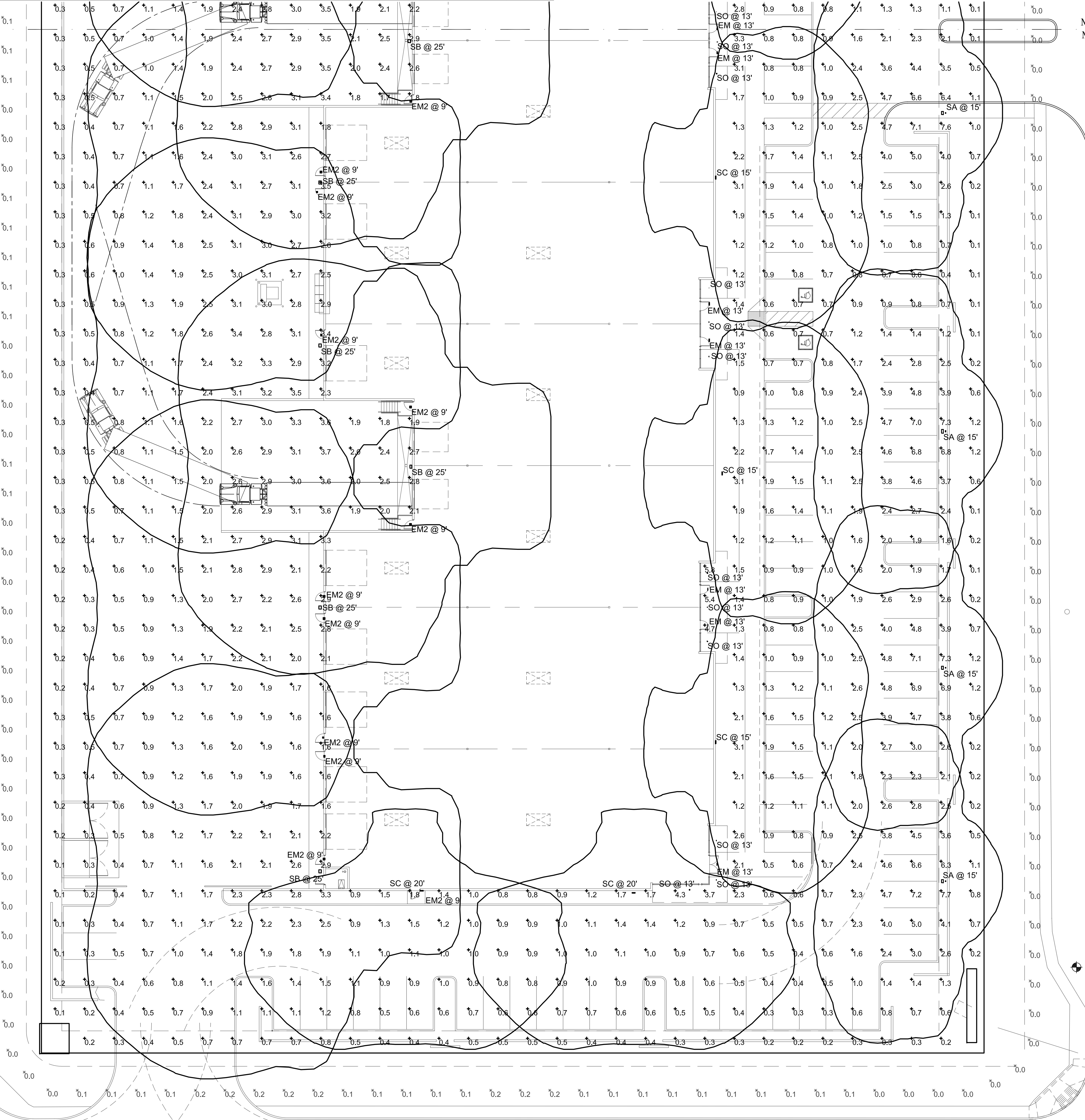
T.J. McQUEEN & ASSOC., INC. LANDSCAPE ARCHITECTURE (T.J.A.) EXPRESSLY RESERVES ITS COMMON LAW, COPYRIGHT & OTHER PROPERTY RIGHTS IN THESE PLANS. THESE PLANS ARE NOT TO BE REPRODUCED, CHANGED OR COPIED IN ANY FORM OR MANNER WHATSOEVER, NOR ARE THEY TO BE ASSIGNED TO ANY THIRD PARTY WITHOUT FIRST OBTAINING THE EXPRESS WRITTEN PERMISSION & CONSENT FROM T.J.A.

Symbol	Label	Quantity	Manufacturer	Catalog Number	Description	Lamp	Number Lamps	Filename	Lumens Per Lamp	Light Loss Factor	Wattage
□	SA	7	Utronix Lighting	DSX0 LED PG 40K T4M MVOLT HS55S 12.5' WITH 2.5' BASE	LED AREA FIXTURE AT 15'	LED	1	DSX0_LED_PG_40K_T4_M_MVOLT_HS55S	12129	0.91	134
□	SB	15	Utronix Lighting	DSX0 LED PG 40K T4M MVOLT WBA	WALL MOUNTED LED	LED	1	DSX0_LED_PG_40K_T4M_MVOLT_HS55S	12129	0.91	134
□	SC	10	Utronix Lighting	DSXW1 LED 20C 1000 40K T4M MVOLT	WALL MOUNTED LED	LED	1	DSXW1_LED_20C_1000_40K_T4M_MVOLT_HS55S	6067	0.91	73.2
○	SO	21	Utronix Lighting	ZAL-19WM 12V 6W HILED 40 4K	WALL MOUNTED LOW VOLTAGE FIXTURE	LED	1	ZAL-19WM-40K	842,823	0.91	9.61
—	EM	12	EELP	OMEL 10W W EM 8	MULLION MOUNT EMERGENCY	LED	1	MUE10KCT.FIES	494	0	10.7
□	EM2	22	Utronix Lighting	AFN EXT	ONE-CAST ARCHITECTURAL EMERGENCY LIGHT WITH CAST ALUMINUM HOUSING, TWO LAMPS, POLYCARBONATE PRISMATIC LENS, AND STANDARD VIBE-THROW OPTICS	LED	2	AFN.ext	Absolute	1	12

Statistic	Symbol	Avg	Max	Min	Max/Min	Avg/Min
DESCRIPTION	X	0.9 fc	0.2 fc	0.0 fc	N/A	N/A
PROPERTY LINE A	+	1.7 fc	7.7 fc	0.1 fc	77.0:1	17.0:1

MATCHLINE SHEET PH2
MATCHLINE SHEET PH1

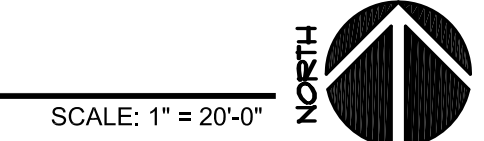
MATCHLINE SHEET PH2
MATCHLINE SHEET PH1



LIGHT FIXTURE 'SA' DETAIL

NO SCALE

PHOTOMETRIC SITE PLAN - SOUTH

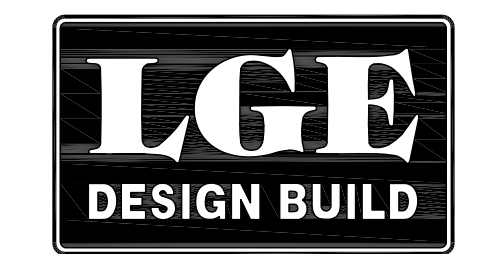


TONY WOO ENGINEERING, INC.
1 W. DEER VALLEY RD.
SUITE 203
PHOENIX, AZ 85027
TEL (602) 279-8092

JOB # **6170231**

CONTACT: GREG HAMPTON
GREG@TNE.PHX.COXMAIL.COM.

MS-FALCON (LLC) BUILDINGS A
HIGLEY ROAD & INDIGO STREET
MESA, AZ. 85205

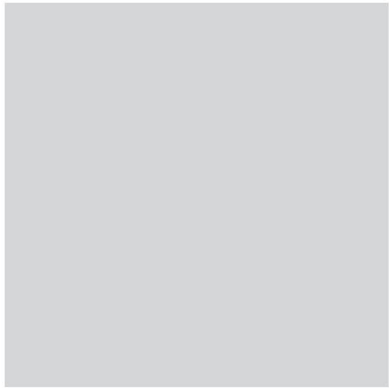


NUMBER	REVISION	DATE

MANUFACTURER'S SHOP DRAWING FOR REFERENCE ONLY

SHEET TITLE:	PHOTOMETRIC SITE PLAN - SOUTH
ISSUE DATE:	09-25-17
DRAWN BY:	SZ
CHECKED BY:	GHTW
PROJECT No.:	
SHEET:	

PH1



P1 - Vapor - DE6358
Dunn Edwards

P2 - Silver Setting - DE6359
Dunn Edwards

P3 - Baby Seal - DE6361
Dunn Edwards

P4 - Tarnished Silver - DE6355
Dunn Edwards

P5 - Black Tie - DE6357
Dunn Edwards



Aluminum Storefront
Clear (AC-2) - Arcadia

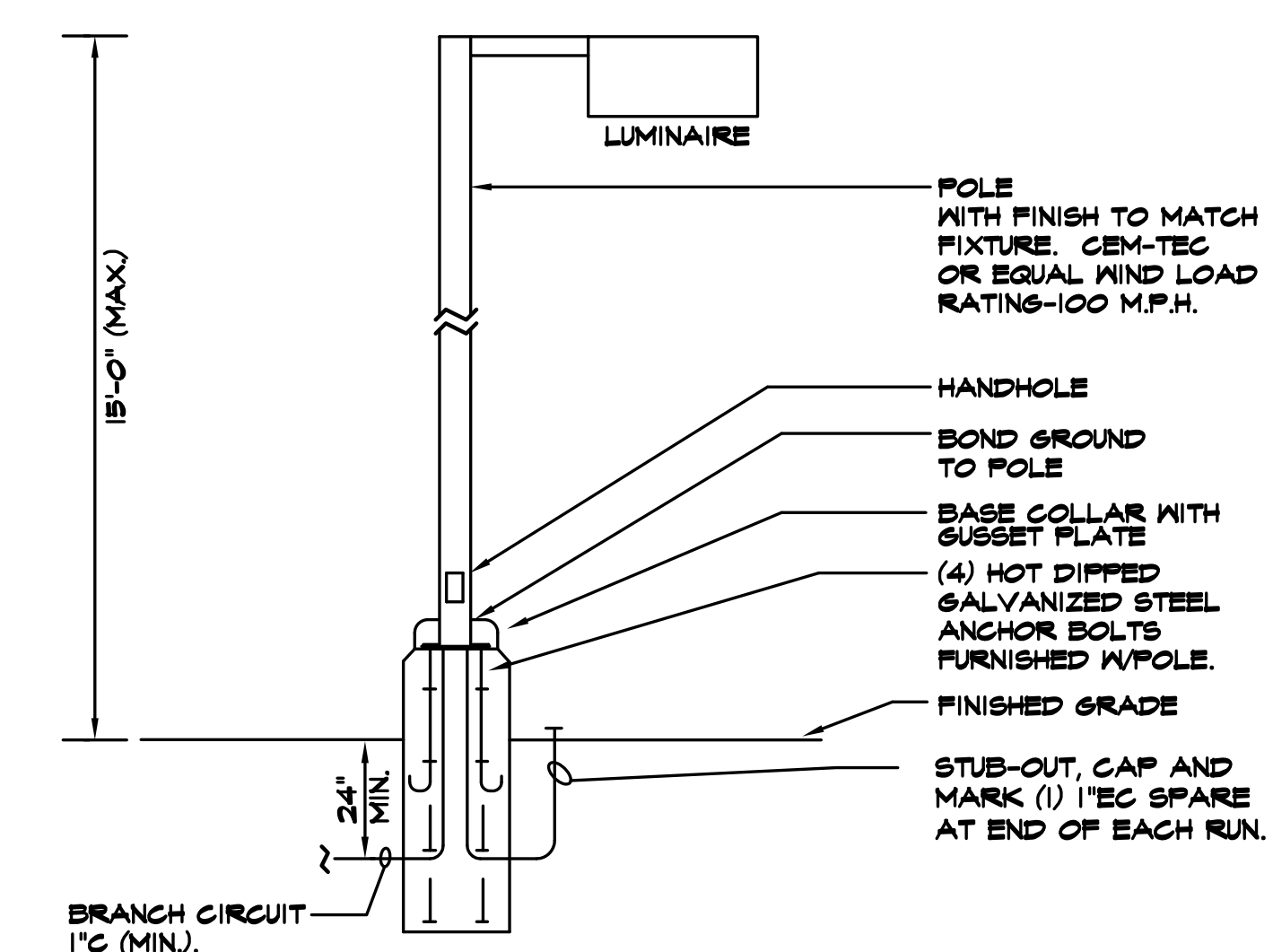
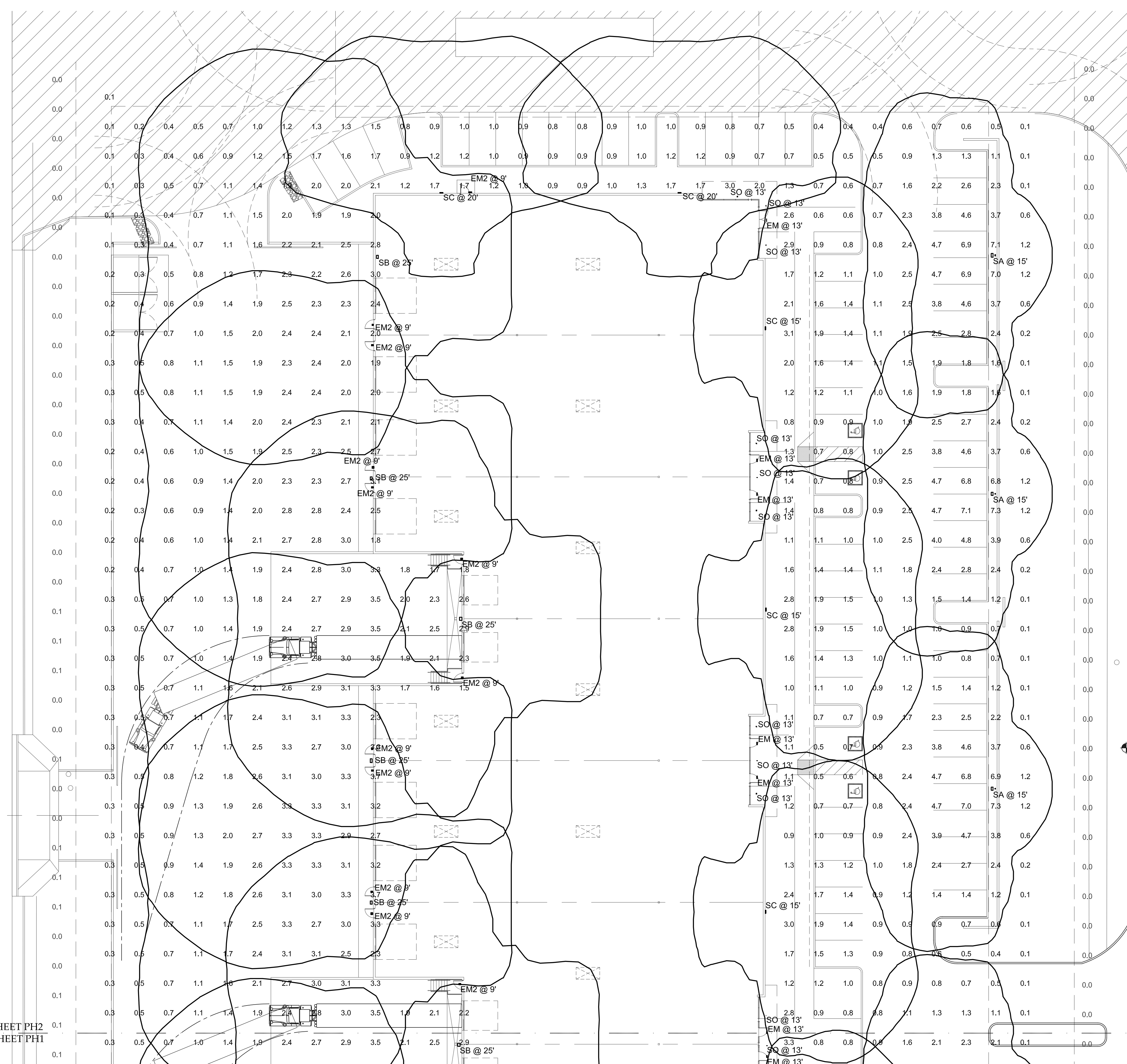
Glass - Gray Reflective



Rendering View

Symbol	Label	Quantity	Manufacturer	Catalog Number	Description	Lamp	Number Lamps	Filename	Lumens Per Lamp	Light Loss Factor	Wattage
SA	SA	7	Lithonia Lighting	DSX0 LED P6 40K T4M MVOLT HS555 12.5' WITH 2.5' BASE	LED AREA FIXTURE AT 15'	LED	1	DSX0_LED_P6_40K_T4_M_MVOLT_HS555	12128	0.91	134
SB	SB	15	Lithonia Lighting	DSX0 LED P6 40K T4M MVOLT W5A	WALL MOUNTED LED	LED	1	DSX0_LED_P6_40K_T4_T4_MVOLT_W5A	15964	0.91	134
SC	SC	10	Lithonia Lighting	DSXW1 LED 20C 1000 40K T4M MVOLT	WALL MOUNTED LED	LED	1	DSXW1_LED_20C_1000_40K_T4M_MVOLT	6067	0.91	73.2
SO	SO	21	HK LIGHTING	ZXL-16W 12V 8W HGLD 40 4K	WALL MOUNTED LOW VOLTAGE FIXTURE	LED	1	ZXL-16W-W-IES	842.8223	0.91	9.61
EM	EM	12	EELP	OMEL 10W W EM B	MULLION MOUNT EMERGENCY	LED	1	MUE10XT-IES	494	0	10.7
EM2	EM2	22	Lithonia Lighting	AFN EXT	DIE-CAST ARCHITECTURAL EMERGENCY LIGHT WITH CAST ALUMINUM HOUSING, TWO LAMPS, POLYCARBONATE PRISMATIC LENS, AND STANDARD WIDE-THROW OPTICS	TWO 6-WATT FROSTED T3-14 WEDGE BASE XENON	2	AFN.ies	Absolute	1	12

Statistics	Description	Symbol	Avg	Max	Min	Max/Min	Avg/Min
PROPERTY LINE A		X	0.0%	0.3%	0.0%	NA	NA
SITE A		+	1.7%	7.7%	0.1%	77.0:1	17.0:1

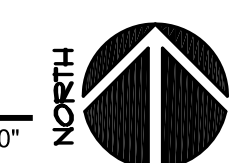


LIGHT FIXTURE 'SA' DETAIL

NO SCALE

PHOTOMETRIC SITE PLAN - NORTH

SCALE: 1" = 20'-0"



TONY WOO ENGINEERING, INC.
 1 W. DEER VALLEY RD.
 SUITE 203
 PHOENIX, AZ 85027
 TEL (602) 279-8092

JOB # **6170231**
 CONTACT: GREG HAMPTON
 GREG@TWE.PHX.COM

MS-FALCON (LLC) BUILDINGS A
 HIGLEY ROAD & INDIGO STREET
 MESA, AZ. 85205



NUMBER	REVISION	DATE

MANUFACTURER'S SHOP DRAWING FOR REFERENCE ONLY

SHEET TITLE:	PHOTOMETRIC SITE PLAN - NORTH
ISSUE DATE:	09-25-17
DRAWN BY:	SZ
CHECKED BY:	GHTW
PROJECT No.:	
SHEET:	

PH2