

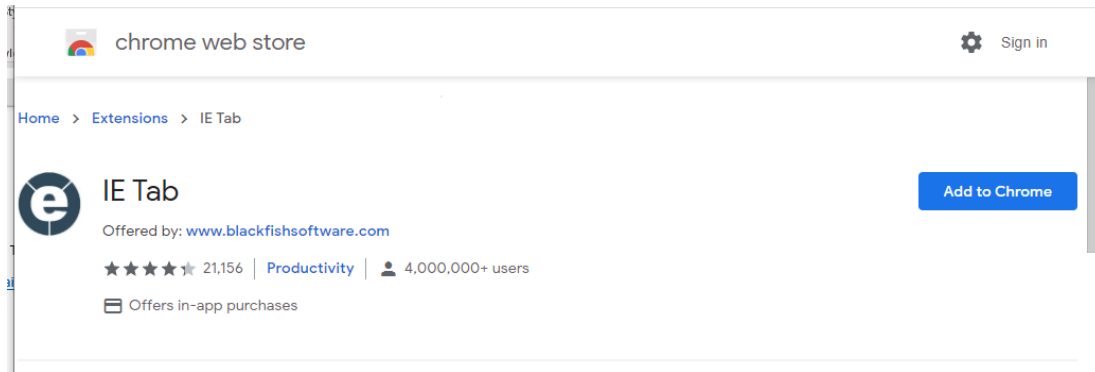
IE Tab is an extension for the Google Chrome web browser. The extension allows users to view pages using the Internet Explorer browser engine. This extension may be employed to use UIR in Chrome.

**Please Note:** IE Tab is provided by a third party. It is only free to individuals for non-business use. License information can be found here: <https://www.ietab.net/license>

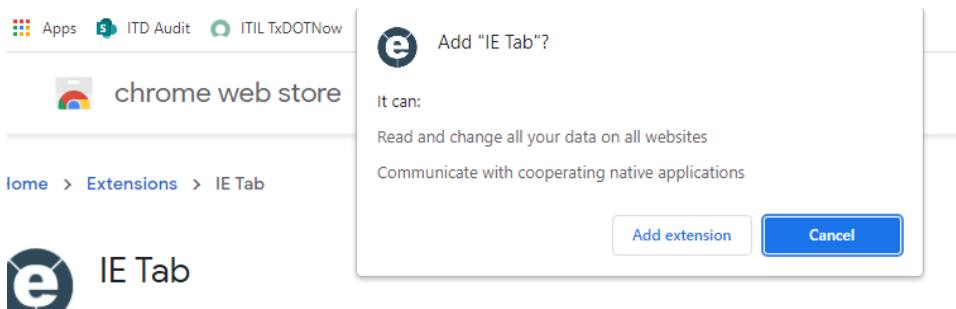
Open Google Chrome

Go to the Chrome webstore and get the IE Tab extension.

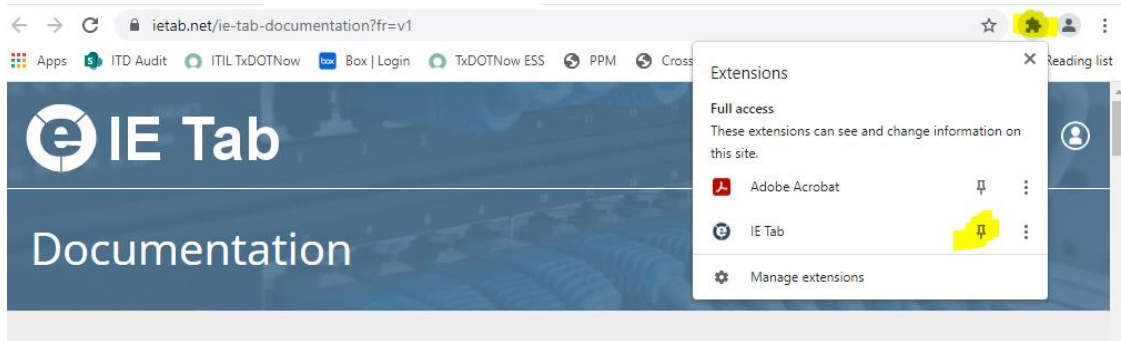
<https://chrome.google.com/webstore/detail/ie-tab/hehijbfgiekmjfkfjpbkbammjbdenadd?hl=en-US>



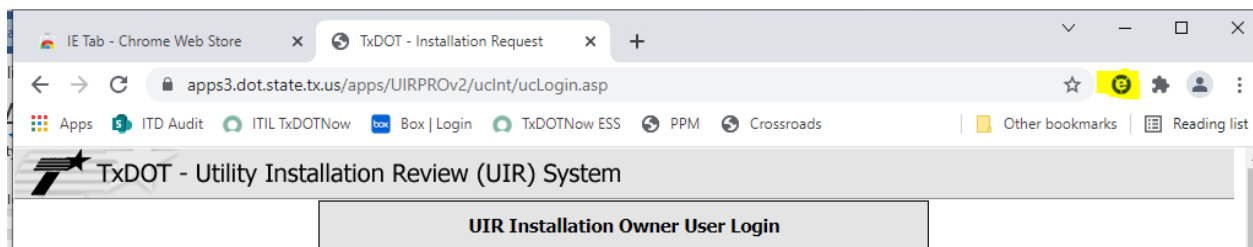
Click on the Add to Chrome button.



Click on the Add extension button.



The IE Tab extension will appear to the right of the address. You can use it directly from the extension list or you can pin it.



After loading the UIR login page, Click the IE Tab extension button.



### One-time installation steps

[What? Why? Frequently Asked Questions](#)

(Enterprise customers: Contact us at [support@ietab.net](mailto:support@ietab.net) for automatic deployment options)

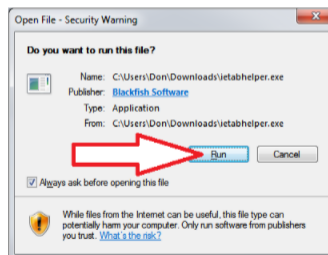
#### Step 1

Click on the ietabhelper.exe below the flashing arrow to launch the IE Tab Helper installer.



#### Step 2

Click on "Run" to run the helper installer:

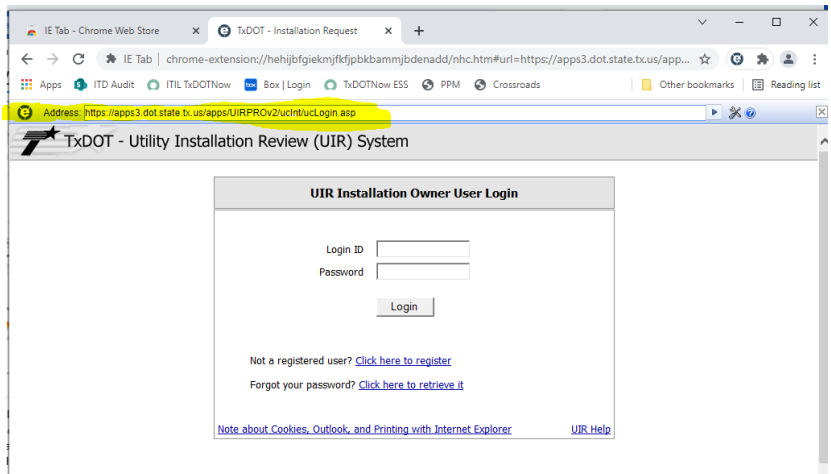


#### Step 3

Confirmation. This page will reload when the IE Tab Helper has successfully installed. If you encounter problems, please contact us at [support@ietab.net](mailto:support@ietab.net)



The first time you use the extension, you will be redirected to the IE Tab installation page and need to download and run ietabhelper.exe. If your screen appears as above, click the up arrow on the download and select open. The extension will install and take you back to the UIR login page. In other cases, you may need to go to the location of the downloaded file and run it.



Note that UIR is run within the extension tab and has the IE Tab extension icon to the left of the address.