

NEWSLETTER



AUSTRALIAN PLANTS SOCIETY MITCHELL GROUP INC.

Email: mitchell@apsvic.org.au

Website: www.apsmitchell.org.au

PO Box 541, Kilmore Victoria, 3764

Inc# A0054306V

February 2022

Volume 9, Issue 1

February news...!

Hello, Happy New Year & welcome to our February 2022 issue, the first for this year...

The committee met very recently to plan our activities for the year. Amid concerns regarding Covid-19 & the need to social distance, we have opted for something a little different:

A summer evening, open air garden visit, to begin our new year. To be held on our usual third Monday evening of the month, just starting a little earlier, to allow plenty of time for wandering the garden before sunset. Details can be found at right & on page 2.

We will return to the John Taylor Room in March and our regular meeting format. Further details will be provided in our March newsletter.

Our next newsletter will be due for issue on or within a few days of Monday March 14th. Contributions big and small remain very greatly appreciated & always needed. If you can help out with items of interest please send them in by March 7th, 2022. Email to: wattlegum@southernphone.com.au

Inside this issue:

February Meeting - An evening Garden Visit! Pg 2

Membership Pg 2

Gardens for Wildlife News Pg 2

November meeting Report Alpine Flora & AGM Pg 3

President's Report Pg 12

Treasurer's Report Pg 13

Reminders, APS Vic Diary Dates etc.... Pg 14

Committee & Contact Information Pg 14

Local native plant nurseries Pg 14



Callistemon 'Injune' 13.02.22

Photo: J Petts

Again I extend heartfelt thanks to everyone who supports our group, and this newsletter. Your assistance is invaluable. In particular this issue, we have Chris Clarke to thank for sharing his photos & information on Alpine Plants. The generosity & support of our guest speakers, members & friends is what truly makes our newsletters possible.

Cheers, and in grateful appreciation,
Jeanine

PS...hope to see you at a meeting soon.

G4W stall returning to Wallan Market...

Norbert & Dawn will be returning to hosting our Gardens for Wildlife stall at the Wallan Market from the March market; Second Saturday of the month (weather permitting) -

Saturday March 12th (usually from 8am):

Native Plants for sale

G4W membership

Information on Native Plants.

Contact Norbert for further information or to confirm attendance: Ph 0428 180 651

Special mention, credit & much thanks to Victoria Morris for largely initiating a new G4W program in the Macedon Ranges region. See page 2 for details.

Mitchell Diary Dates..

- In line with ongoing Covid-19 advice, restrictions may apply or affect APS related events. If in doubt, please **contact us** (see contacts list on page 10). **Please note:** Meetings will be held under the requirements of our **Covid Safe facility Plan**; **Please read the plan (from page 13) prior to attending**
- **Monday February 21st, 2022 Evening Meeting: Garden Visit: Commencing 6:30pm - at Wattle Gum Forest Farm 2320 Seymour Pyalong Rd, Pyalong Vic 3521**
RSVP to Ian Ph: 0438 270 248 or Jeanine Ph: 0409 029 603 For further details see page 2.
- **Monday March 21st, Evening Meeting 7:30pm Flower Table Evening in the John Taylor Room.**
- **SAVE THE DATE!**
APS Mitchell Spring Expo & Plant Sale: Saturday October 15th, 2022. 9am-3pm.



Gardens for Wildlife for Macedon Ranges...

From Victoria Morris & Pat Denko

As a follow on from a suggestion put forward for the recent [Cool Changes: Lancefield and Romsey Plan](#) (a program of the Macedon Ranges Council Climate Action Plan), Deep Creek Landcare group are joining the Gardens for Wildlife Victoria scheme as an adjunct to the groups main aims. We feel there is a potential need for this, as both Romsey and Lancefield are expanding with new estates growing fast. New residents might be wondering what to do with their bare gardens, and access to local advice and encouragement to plant something suitable for the area and changing climate might help. Our Mitchell Shire APS group are already involved and have a seasonal stand at the Wallan market.

The Gardens for Wildlife Victoria scheme began in 2016, acting as an umbrella partnership to support many local groups such as ours. The Macedon Ranges Council have provided help and encouragement to begin this new G4W program for the region. As the name suggests, the main goals are; To nurture our flora, fauna and environment. To build knowledge, skills, confidence and ownership for caring for the land and its wildlife. To strengthen connections between residents, nature, community and place. To improve wellbeing through experiencing and caring for nature.

To this end we are manning a stall at the next two Lancefield Farmers Markets - February 26th and March 26th. We hope to raise awareness and interest local residents in the Gardens for Wildlife scheme, along with encouraging new members to join APS and Landcare. Landcare will provide nest boxes for sale, and we will have a variety of booklets and information available, as well as native plants to show and sell. Please do come out and show your support. Feel free to bring a friend, and/or let your friends and contacts know about this great opportunity.

Victoria Morris & Pat Denko

**MEETINGS ARE HELD ON THE
3rd MONDAY OF THE MONTH
(February to November)
unless otherwise advised**

**Commencing 7:30 pm in the
John Taylor Room, Kilmore
Library, Sydney Street,
Kilmore Vic 3764**

Entry \$2.00 Gold Coin

Guest Speaker

Door Prizes

Plant Sales

**Use of the APS Mitchell free
Library**

Supper & Chat

VISITORS VERY WELCOME

Members & Visitors are
encouraged to bring along
exhibits for our "Show & Tell"
Flower Specimen Table

Please label plants



February Meeting – A Garden Visit: Monday 21st 6:30pm at Wattle Gum Forest Farm

To start this year we are doing something a little different & beginning our group activities with a summer evening garden visit to: **Wattle Gum Forest Farm in Pyalong:**

Were: 2320 Seymour Pyalong Road, Pyalong Vic 3521

When: Commencing 6:30pm

Wattle Gum Forest Farm is a 33acre rural property situated a little outside the town boundary of Pyalong, nestled in a quiet valley that feeds onto Mollison Creek.

The gathering will primarily be a relaxed social evening, outdoors in the fresh air, with our usual supper including tea & coffee provided (in an undercover area). Russell Wait will have plants available for sale on the evening too.

As it is a large garden on farmland, it is recommended to wear sturdy, enclosed, footwear and appropriate clothing for weather conditions on the evening.

An RSVP is requested for this event.

To RSVP, for further information, or enquiries contact:

Ian Ph: 0438 270 248, or Jeanine Ph: 0409 029 603, or email: mitchell@apsvic.org.au

Visitors, guests and friends are always very welcome at APS Mitchell meetings.



New Frog Pond at WGFF.

Photo: J Petts

Memberships...

With much thanks and a cheery, friendly, welcome to those members who have renewed this year or recently joined, our membership now stands at 29. If you have still yet to renew, wish to join, or check your membership status, please contact Christine: Phone 0458 238 270 or Email to the attention of the Membership Officer: mitchell@apsvic.org.au A membership form is on page 16 of this newsletter. Further information, contact details, along with a downloadable [membership form](#) can also be found at our website: <http://www.apsmitchell.org.au/membership/>

November meeting report - Alpine flora...

By Jeanine Petts

After a six-month hiatus, it was absolutely wonderful to be able return to the John Taylor Room, meet face to face, host our November meeting and actually hold an on-time AGM. Needless to say, we all took full advantage of arrival and sign in time to grab a pre-meeting cuppa, and quickly catch up with each other a little before being called to our seats.

Norbert opened the meeting, welcoming everyone and advising we would be inviting our guest speaker, Chris Clarke, to take the floor first, then follow on with our AGM after the main presentation.

Chris began by sharing a little about himself. Most of us would know his name as he currently writes the APS Victoria President's piece in the quarterly magazine *Growing Australian*. His interest in native plants developed as a young boy growing up in Ringwood. For him, being President of APS Vic has felt "weird" in the last two years with all the Covid-19 related limitations & cancelled events. Where there would have been four quarterly meetings, flower shows, plant sales etc. There has only been the one quarterly COM meeting organised and run by the Warrnambool district group. There are interesting events planned for the coming year and Chris encouraged us to attend both the 2022 FJC Rogers Seminar: Fabulous Peas (October 15th & 16th), and the ANPSA National Conference in Kiama NSW, advising that booking for the tour to Lord Howe Island are now full, but the rest of the conference and activities are well worth going along to. Chris is a member of the Keilor Plains district group and had brought along copies of the book *Plants of Melbourne's Western Plains*, available for sale at the end of the evening for \$15 per copy. The book was produced by the group, and is an excellent and informative guide, listing very many species that are also found across the Mitchell Shire. From a print run of 8000 copies there is now around 2000 left available for sale.

With introductions over, Chris proceeded on with his presentation: "A Snap Shot of Victorian Alpine Flora", advising we could feel free to Q & A as we go. All the photos were taken on regular trips that are organised by the Keilor Plains Group into the Alps. The group organises a 3–4-day weekend trip to the Alps every 2 years, along with day trips to Lake Mountain. The group has been to Mt Baw Baw, Mt St Gwinear, Mt Buller, Falls Creek and Bogong High Plains (3 times), Mt Hotham, and Lake Mountain (twice). Chris suggested trips such as these are something our group could also organise, mentioning that at Howman's Gap YMCA (Falls Creek) accommodation with catering is quite reasonably priced.

Chris advised he is not an expert on alpine plants, but has been gradually getting to know the alps and plant species with each trip. Before moving on to showing individual plant species, we were given a little information on the geology of our Victorian Alps:

The bedrock of Victorian Alps was formed in an ancient ocean, between 530 and 400 million years ago. However, the mountains formed in the last 10 million years. Our alps are flat and rounded when compared other alpine ranges around the world due to two main factors. Firstly, The Victorian Alps originated through continental splitting. Secondly, the Victorian Alps were never tall enough to develop large glaciers, and it is the erosion from ice that produces jagged peaks.

The Victorian Alps continue to be influenced by plate tectonics today, as continental collision with New Zealand drives the range up each year. Although it is a very slow process, at about 70 metres each million years.

The highest peak in the range is Mount Bogong at an elevation of 1,986 metres, which, is the highest peak in Victoria. Mount Feathertop is at an elevation of 1,922 metres, Mount Hotham 1,862 metres, Mount Buffalo 1,723 metres and Mount Baw Baw 1567 metres.

January in the alps is generally peak flowering time - the equivalent to spring at lower altitudes. However, at areas such as Lake Mountain, being at a lower altitude, peak flowering can begin from December. Correspondingly, at some of our highest regions, peak flowering can be in late January.

Species endemic to alpine regions have a range of adaptations to cope with the conditions. At higher altitudes photosynthesis is limited by temperature, frost and snow. Snow limits access to sunlight, and wind, high rainfall and high UV light also effect plant growth. Some alpine plants such as Snow Gums will often have thickened, oily leaves, an example is *Eucalyptus pauciflora* subsp. *niphophila*. Flexible stems are another adaptation to avoid breaking under the weight of snow. Low growth heights, mat forming, and growing closely around rocks to avoid or because of wind and frost are other adaptations. Rainfall in the Victorian Alps can be in the vicinity of 2m per year, which, the plants also need to cope with. Alpine peat bogs will have low oxygen levels, and one adaptation to this is being carnivorous, Fairies Aprons, *Urticaria* species, are one example. Many Alpine plants also grow fast and flower rapidly to complete their cycle in the short growing season. Plant roots may contain higher levels of stored

(Continued on page 4)

November meeting report - Alpine flora continued...

(Continued from page 3)

carbohydrates, which, assists to get them off to a good start when the short alpine spring arrives. Seed dormancy is a further adaptative feature, with plants requiring the right temperatures to trigger germination. Conditions in frost hollows can be very harsh, and as a consequence, will contain fewer trees and shrubs.

From this point Chris went on to show the following species images and had organised the slides by plant family (in alphabetical order):

Aciphylla glacialis Mountain Celery (photographed at Mt Buller), is a member of the Apiaceae family or umbelliferae, the celery, carrot or parsley family. The species is eaten by cattle and is listed as near threatened in Victoria.

Oreomyrrhis eriopoda Australian Caraway is another member of the Apiaceae family, that has divided, feathery leaves, and can be used in cooking.

Trachymene humilis Alpine Trachymene (Apiaceae family) the specimen photographed is possibly a subspecies and is a prostrate mat forming plant.

Herpolirion novae-zelandiae Is a member of the Asphodelaceae family (Aloe is a member of this group). Its common name is Sky Lily although it is not actually a lily, but is related to Grass Trees. The flowers of this species have 5 petals, while true lilies have 6 petals. The specimen shown was found at Mt Baw Baw.

A lot of Daisy species (Asteraceae) are found in the alps, some of which, are:

Brachyscome scapigera (Photographed at Mt Buller.)

Brachyscome rigidula Leafy Daisy

Celmisia sp. The Snow Daisies, of which, there are quite a number of species. Individual species can be hard to distinguish from each other, there being small differences occurring in leaf types and stem bases. The image shown of Snow Daisies was taken along the Bogong High Plains walk.

Coronidium monticola Button Daisy (Falls Creek) is separate species from the more commonly found *C. scorpioides*. Alpine forms of *Coronidium* species have a "chunkier" form (*one of Chris's "technical" terms) and grey foliage.

Craspedia maxgrayi is an alpine grassland plant which, is usually found in drier sites. In Victoria it is restricted to the herb-field on the Bogong High Plains and Mt Hotham areas.

Craspedia have composite flowers with no floral bracts and there are 13 species found across Victoria:



Aciphylla glacialis - Mountain Celery
Photo: Chris Clarke



Trachymene humilis Alpine Trachymene
Photo: Chris Clarke



Herpolirion novae-zelandiae Sky Lily
Photo: Chris Clarke



Brachyscome scapigera Tufted Daisy
Photo: Chris Clarke



Celmisia sp. Snow Daisies
Photo: Chris Clarke



Coronidium monticola - Button Daisy
Photo: Chris Clarke



Craspedia maxgrayi
Photo: Chris Clarke



Chrysocephalum semipapposum subsp. *lineare*
Photo: Chris Clarke

(Continued on page 5)

November meeting report - Alpine flora continued...

(Continued from page 4)

Craspedia Adenophora, *Craspedia alba* (white flowers), *Craspedia aurantia*, *Craspedia basaltica* (basalt plains), *Craspedia canens*, *Craspedia crocata*, *Craspedia gracilis*, *Craspedia haplorrhiza* (NW Vic), *Craspedia lamicola*, *Craspedia maxgrayi*, *Craspedia paludicola* (Swamp Billy Buttons), *Craspedia sylvestris* & *Craspedia variabilis*.

Chrysocephalum semipapposum* subsp. *lineare
Alpine Clustered Everlasting has striking grey foliage and is a very good pollinator attracting plant.

Leptorhynchos squamatus* subsp. *alpinus Alpine Scaly Buttons. The grey foliage and its "hairiness" are two features that provide frost resistance.

Euchiton nitidulus Shining Cudweed (at Mt Cole) is another of the Asteraceae family and has flowers that have no ray florets. The pictured image is the full flower.

Olearia frostii Bogong Daisy Bush is also found in a pink flowering form. Both forms make a lovely garden plant.

Olearia megalophylla Large-leaf Daisy Bush is a lovely understorey shrub that grows to 1.5m. A feature of its leaves is their lined edge. (Photographed at Mt Stirling)

Podolepis robusta Alpine Podolepis has larger more golden flowers than plains *Podolepis* species. It flowers in January and attracts Butterflies and Day Moths. This specimen was photographed at Falls Creek.

Podolepis laciniata (photographed at Falls Creek) has cottony leaves, the ligules of its ray corolla and teeth are longer than those of *P. robusta*.

Ozothamnus alpinis Alpine Everlasting (photographed at Bogong High Plains) is a sturdy, compact bush that when in flower attracts beetle pollinators.

Ozothamnus cupressoides Kerosene Bush is very aptly named as it really does smell like kerosene.

Xerochrysum subundulatum is another species sharing the common name of Alpine Everlasting and is a fairly common species of moist alpine herb-fields, where they can form sizeable colonies. The photographed specimen is also from Bogong High Plains.

Blechnum penna-marina* subsp. *alpina Alpine Water



Leptorhynchos squamatus subsp. *alpinus*
Photo: Chris Clarke



Euchiton nitidulus Shining Cudweed
Photo: Chris Clarke



Olearia frostii Bogong Daisy Bush
Photo: Chris Clarke



Olearia megalophylla Large-leaf Daisy Bush
Photo: Chris Clarke



Podolepis laciniata
Photo: Chris Clarke



Ozothamnus alpinis Alpine Everlasting
Photo: Chris Clarke



Ozothamnus cupressoides Kerosene Bush
Photo: Chris Clarke



Xerochrysum subundulatum
Photo: Chris Clarke



Blechnum penna-marina subsp. *alpina*
Photo: Chris Clarke

(Continued on page 6)

November meeting report - Alpine flora continued...

(Continued from page 5)

-fern is a member of Blechnaceae family and makes a lovely specimen as an indoor plant.

Wahlenbergia gloriosa Royal Bluebell was photographed at Mt Buller and is a member of Campanulaceae, the Bellflower family. It grows in forests and heath in higher peaks (above 1500m) and the flower stalks really stand up highlighting the 20cent sized blue flowers. Chris has tried to grow the species, alas, as yet without success.

Colobanthus affinis Alpine Colobanthus grows above 1600m altitudes and is a moss like species of Caryophyllaceae (the Pinks or Carnation family). The flowers are delicate and, in the photo, you can see the floral cup is full of seeds. The species is now rare, however, since cattle have been removed it has been slowly recovering. Unfortunately, with feral horse numbers on the rise, this recovery may be short lived.

Scleranthus biflorus Cushion Bush is another member of Caryophyllaceae. A close-up photo revealed the reason for the name biflorus; having 2 flowers per stem (*C. uniflorus* has 1 flower per stem). It is a great landscape plant for areas that don't dry it out.

Epacris glacialis Reddish Bog-Heath is a member of Ericaceae, the heath or heather family. It forms a low prostrate shrub growing 5-30cm high. (Photographed at Falls Creek.)

Pentachondra pumila Carpet heath is a mat forming plant and member of Ericaceae that was photographed at Bogon High Plains. It is often found growing matted down around rocks.

Richea continentis Candle Heath is another alpine member of Ericaceae that grows in damp boggy areas.

Moving to the Pea family; Fabaceae, Chris described there being a "swathe" of pea plants in the alps, which, are usually finished flowering by the 2nd week in January.

Hovea montana Mountain Hovea produces masses of purple flowers.

Podolobium alpestre Alpine Shaggy-pea is an orange-yellow flowered, prostrate to upright shrub that can grow to 1.3m high.

Pultenaea muelleri Mueller's Bush-pea is a yellow flowered shrub endemic to Mt Baw Baw that grows



Wahlenbergia gloriosa Royal Bluebell
Photo: Chris Clarke



Colobanthus affinis Alpine Colobanthus
Photo: Chris Clarke



Scleranthus biflorus Close up
Photo: Chris Clarke



Epacris glacialis Reddish Bog-Heath
Photo: Chris Clarke



Scleranthus biflorus Cushion Bush
Photo: Chris Clarke



Pentachondra pumila Carpet heath
Photos: Chris Clarke



Richea continentis Candle Heath
Photos: Chris Clarke



Hovea montana Mountain Hovea
Photo: Chris Clarke



Podolobium alpestre Alpine Shaggy-pea
Photo: Chris Clarke

(Continued on page 7)

November meeting report - Alpine flora continued...

(Continued from page 6)

from 1-3m tall.

Gentianella muelleriana subsp. willisiana Mt Buller Snow-gentian as the name suggests, is Endemic to Mt Buller region. It flowers in late December and is a member of Gentianaceae the Gentian family.



Gentianella muelleriana subsp. *willisiana* Photo: Chris Clarke

Goodenia hederacea Ivy-leaf goodenia is a mat forming member of Goodeniaceae. (Photographed at Mt Hotham)



Goodenia hederacea Ivy-leaf goodenia Photo: Chris Clarke

Scaevola hookeri Creeping fan-flower is another mat forming plant and member of Goodeniaceae that grows in damp areas.



Scaevola hookeri Creeping fan-flower Photo: Chris Clarke

Utricularia dichotoma Fairies Aprons is one of the Bladder Worts and member of Lentibulariaceae (the largest carnivorous plant family). The species is one of 11 beautiful *Utricularia* found in Victoria, which, grow in boggy areas.



Utricularia dichotoma Fairies Aprons



Photos: Chris Clarke

Prostanthera cuneata Alpine Mint-bush (photographed at Mt Baw Baw) is a member of Lamiaceae the Mint family. This species makes a great, compact garden shrub that reaches 1m and will grow under gum trees. It needs reliably moist soil as it doesn't like to dry out.

Arthropodium milleflorum Pale Vanilla Lily (Liliaceae) is easy to grow in the garden and hardy. Although they do fall prey to snails, and will die down in summer.



Callistemon pityoides Alpine Bottlebrush Photo: Chris Clarke

Montia australasica White Purslane is of the Montiaceae family. It is a semi-aquatic species that provides frog habitat and is suitable planting at the edge of a pond.



Montia australasica White Purslane Photo: Chris Clarke

Callistemon pityoides Alpine Bottlebrush (of Myrtaceae the Myrtle family) grows to around 2m. It can be grown in the garden in a damp site or grown in a pot. Standing the pot in a tray of water is recommended, and shelter from hot sun is needed.

Eucalyptus pauciflora subsp. pauciflora Snow Gum (Myrtaceae) has oily, thick leaves to protect it from frost and snow. It grows at the summit of Mt Cole to Bogong High Plains. There is a lovely 3km walk at Mt Cole that is not too steep.



Eucalyptus pauciflora subsp. *pauciflora* Photo: Chris Clarke



Kunzea muelleri Yellow Kunzea Photo: Chris Clarke

Kunzea muelleri Yellow Kunzea (Myrtaceae) grows on rocky peaks in seemingly endless swathes.

(Continued on page 8)

November meeting report - Alpine flora continued...

(Continued from page 7)

Leptospermum grandifolium Mountain tea-tree (Myrtaceae & photographed at Mt Baw Baw) makes a lovely garden plant that will grow to 2-3m and is suitable to grow in pots.



Leptospermum grandifolium Mountain tea-tree Photo: Chris Clarke

Epilobium billardioreanum Willow herb is a member of Onagraceae the willowherb or evening primrose family. There are 4 subspecies, all found in Victoria, which, are tricky to identify. The photographed specimen was on Bogong High Plains.



Epilobium billardioreanum Willow herb Photo: Chris Clarke

There are quite a number of alpine orchids (Orchidaceae), species shown were:

Prasophyllum alpestre Alpine Leek Orchid

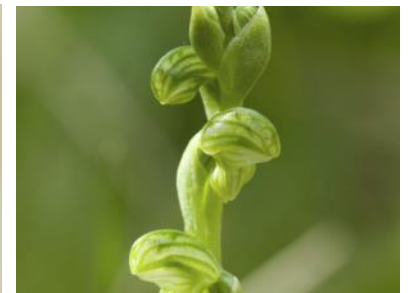


Prasophyllum alpestre Alpine Leek Orchid Photo: Chris Clarke

Prasophyllum tadgellianum was photographed at Mt Hotham. It is listed as rare in Victoria and found growing only in subalpine meadows and Snow gum woodlands.



Prasophyllum tadgellianum Photos: Chris Clarke



Pterostylis cycnocephala Swan Greenhood Photos: Chris Clarke

Pterostylis alpina Mountain Greenhood is a widespread species that has a curled stem.

Pterostylis cycnocephala Swan Greenhood is a tiny hard to find species.

Thelymitra cyanea Veined Sun-orchid can be seen on the Aqueduct Walk at Falls Creek.



Thelymitra cyanea Veined Sun-orchid Photo: Chris Clarke



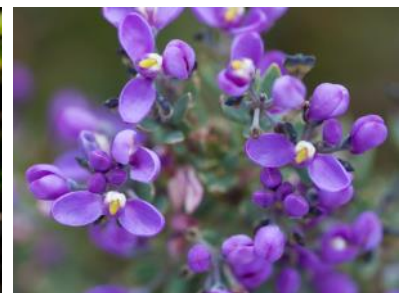
Veronica derwentiana subsp. *maideniana* Photo: Chris Clarke

Veronica derwentiana subsp. *maideniana* Alpine Veronica (previously *Derwentia*) is a member of Plantaginaceae the Plantain family. The alpine subspecies is "chunkier" than lower altitude species.

Poranthera oreophila Alpine Poranthera of Phyllanthaceae the Sweet Leaf family is a tiny, almost "micro" sized plant photographed on the Bogong High Plains



Poranthera oreophila Alpine Poranthera Photo: Chris Clarke



Comesperma retusum Mountain Milkwort Photo: Chris Clarke

Next in line came species in Ranunculaceae the Buttercup or Crowfoot family. There are 33 Species of Buttercup occurring in Victoria and most have suffered due to cattle and feral horses. Chris commented they are hard to photograph, as being so bright, over exposure is an issue.

Ranunculus victoriensis found mainly on Bogong High Plains.

(Continued on page 9)

November meeting report - Alpine flora continued...

(Continued from page 8)

Ranunculus eichlerianus Eichler's Buttercup is a rare Victorian species found in alpine grassland and open Snow-gum woodland. (Photo Reilly Beacom iNaturalist)



Ranunculus eichlerianus Eichler's Buttercup Photo: Reilly Beacom

Ranunculus anemoneus is a white flowered Buttercup that is now extinct in Victoria and currently still found in NSW. (iNaturalist - photo Murray Dawson)



Ranunculus anemoneus
Photo: Murray Dawson iNaturalist

Asperula pusilla Alpine Woodruff belongs to Rubiaceae the madder family.



Euphrasia collina Photo: Chris Clarke

Euphrasia collina a member of Orobanchaceae, the Boomrape family, has 7 subspecies. A member of the Keilor Plains Group found this species growing at Mt Macedon, which was a first for the area.

Chris mentioned that citizen science plays a big part in helping to extend the knowledge and data base of the how, when and where native species occur. There is currently in the vicinity of 200 thousand people in Australia contributing to the iNaturalist platform.

Remaining species shown were:

Euphrasia eichleri Bogong Eyebright



Euphrasia eichleri Bogong Eyebright
Photo: Chris Clarke

Grevillea australis Alpine Grevillea (Proteaceae) is a sturdy shrub that has tiny lemon-coloured flowers.



Grevillea australis Alpine Grevillea
Photo: Chris Clarke

Grevillea victoriae Royal Grevillea is a large sub-alpine shrub with soft red flowers photographed at Falls Creek. It can be grown in our region and there are some lovely garden forms.

Stackhousia monogyne Creamy Candles (Stackhousiaceae).



Pimelea axiflora subsp. *alpina*
Photo: Chris Clarke



Styliidium armeria subsp. *armeria* & Macleay's Swallowtail Photo: C. Clarke

Styliidium armeria subsp. armeria Trigger Plant (Styliidiaceae) photographed with Macleay's Swallowtail.

Pimelea axiflora subsp. alpina Alpine Bootlace-bush is a member of Thymelaeaceae the Daphne family and was photographed at Mt Hotham.

Pimelea ligustrina subsp. ciliata and **Tasmannia xerophila** Alpine Pepper were photographed together at Mt Buller.



Pimelea ligustrina subsp. *ciliata* (foreground) and *Tasmannia xerophila* (background)
Photo: Chris Clarke



Podocarpus lawrencei Mountain Plum-pine
Photo: Chris Clarke

Viola betonicifolia Mountain violet (Violaceae).

Podocarpus lawrencei Mountain Plum-pine (of Podocarpaceae the Yellow-wood family) is an ancient, early species of pine and very slow growing that can

(Continued on page 10)

November meeting report - Alpine flora continued...

(Continued from page 9)

live from 600-1000 years.

Aseroe rubra the Anemone Stinkhorn fungus was photographed at Mt St Gwinear.

Fungi are important in ecosystems as they connect trees and transport nutrients etc. Networks of mycelium can be 1-200m in diameter, and also ancient, some being 25 thousand years old.

As the presentation drew to a close Chris also showed some of the “mini beasties” and other fauna found and photographed in the alps:

Acripeza reticulata Mountain Katydid

Yeelanna pavonina Colourful Yeelanna which, is rare; only found on Mt Baw Baw and Mt Kosciusko.

Chrysolarentia chrysocyma Small Radiating Carpet Moth, a day moth photographed at Mt Buller

Solanders Brown (Butterfly)

Orange Xenica photographed at Mt St Gwinear

Spotted Alpine Xenica is one of 3 Xenica species only found in the high alps. In total, there are 10 native Australian species of Xenica.

Silver Xenica photographed at Bogong High Plains.

Delias aganippe the Wood White (or Red-spotted Jezebel) butterfly photographed on a *Celmisia* species.

Austrelaps ramsayi Highland Copperhead seen at Mt St Gwinear. Chris cautioned: When in the alps watch where you walk, a hot day equals both snakes and March flies, so wearing long pants is best.

A Flame Robin was the closing slide with a couple of questions finishing off the presentation: Victoria asked (to our group) When is our trip?

Chris shared that the next Keilor Plains group trip was to be in January 2022 with 35 members booked to attend for 4 nights at \$150 per person in a ski lodge. Bargains can be had in summer and at Hamblin’s Gap accommodation with full catering can cost \$250 for 3 nights.

The last questions was: Has anyone done work on how edible some alpine plants are? The answer: A little, and Mountain Pepper etc. was cited as an example.

Immediately following on from the presentation, we moved straight into our AGM with Chris Clarke accepting the role of Chair Person for the proceedings:

Ian Began with reading & passing of the minutes carried over from our last AGM. Christine then followed with the Treasurer’s Report (printed in full detail on page 13), mentioning that we are not currently utilising our group library as well as we should. Owing to the situation with Covid-19 the group 2020-2021 income primarily came from membership fees, and a small amount from meeting plant sales and entry fees. We also received a \$500 Bendigo Bank Covid Grant. Expenditure other than general running costs was Gardens for Wildlife



Aseroe rubra Anemone Stinkhorn fungus Photo: Chris Clarke



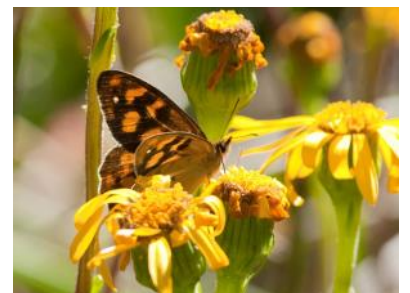
Acripeza reticulata Mountain Katydid Photo: Chris Clarke



Yeelanna pavonina Colourful Yeelanna Photo: Chris Clarke



Chrysolarentia chrysocyma Small Radiating Carpet Moth Photo: C. Clarke



Solanders Brown Photo: Chris Clarke

(Continued on page 11)

November meeting report - Alpine flora continued...

(Continued from page 10)

signs and plants. Prior to the evening we had 21 financial members, and Christine was pleased to announce new members had joined on arrival this evening. In another year of greatly reduced group activity our bottom line finished with a nett operating loss for the period of \$50.00.

Norbert took the floor next and gave a quick summation of the past year mentioning the chaos created in the last 12 months by Covid-19, during which, our group activity primarily existed via the newsletter with contributions sent in by members. With regard to our Expos, Ian puts in a lot of behind the scenes work with planning, organising and contacting growers/ stall holders. On the Gardens for Wildlife front, we hope to be expanding the program and greatly appreciate having Gerry on board who has a PhD in Botany. Norbert advised he would provide a written report for the newsletter - See page 12 for the full report.

Lastly, the formal part of the meeting concluded with the election of office bearers and general committee, with the committee for 2022 being:

President – Norbert Ryan

Vice President – Dawn McCormack

Secretary – Ian Julian

Treasurer – Christine Cram

Newsletter Editor – Jeanine Petts

Gardens for Wildlife Coordinator – Gerry Wun Ho

General Committee members – Victoria Morris and Maureen Thomas

Proceedings finished with a round of applause in appreciation and thanks for our volunteers.



Orange Xenica Photo: Chris Clarke



Spotted Alpine Xenica Photo: Chris Clarke



Silver Xenica Photo: Chris Clarke



Flame Robbin Photo: Chris Clarke



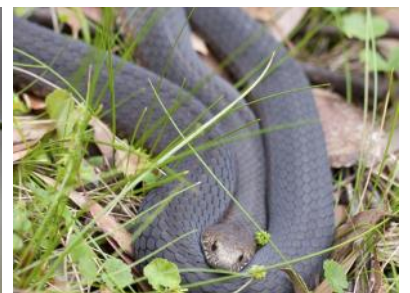
Delias aganippe Wood White on Celmisia sp. Photo: Chris Clarke



Oreomyrrhis eriopoda Australian Caraway Photo: Chris Clarke



Arthropodium milleflorum Pale Vanilla Lily Photo: Chris Clarke



Austrelaps ramsayi Highland Copperhead Photo: Chris Clarke

APS Mitchell President's Report 2021...

By Norbert Ryan

As for the succeeding year, 2021 was plagued by Covid-19 lockdowns. This caused disruption to our projected plans for the year and threw the guest speaker program into disarray. Nevertheless we persevered; February, June, August, September and October meetings and a July garden visit were all cancelled, sometimes at short notice. The feature Expo event planned for October came agonisingly close to fruition and we were debating whether to proceed with final steps in planning, when a further lockdown was imposed, settling the issue for us. The events which did proceed were meetings with guest speakers held in March, April, May and November. Also a garden visit to Ironstone Park Nursery was held in late November. Needless to say, attendance at all events has been reduced, well below levels achieved pre-Covid.

Thanks to the editorial role of Jeanine, our newsletter has remained the major activity, the feature that provides some cohesion to the Mitchell APS group. In normal times the standard format of our newsletter has been to provide a full review of the talks given by guest speakers. In all cases speakers have been happy to co-operate with this by providing copies of their slides and in some instances even a copy of accompanying notes. Under pandemic conditions and cancellation of meetings, this has reduced the subject material for the newsletter. However it has been very pleasing to have the support of many members who have filled the void by providing articles and photos. Once again we have had a wet year that has favoured gardens, so it's been a tragedy that we had to forgo the Expo. To some extent, this has been counterbalanced by the beautiful garden and wildflower photos included in our newsletter. Our appreciation for the dedication of Jeanine to regularly publish such a nice magazine, cannot be over-emphasized.

Ian Julian has to be thanked for once again initiating the planning for the expo. This by necessity commences well prior to the event, so there was a lot of time and effort contributed towards this goal. The Expo normally provides a beautiful display of springtime specimens collected from members' gardens, wonderfully enhanced by contributions from our specialist grower/members Russell Wait, Brian and Lorraine Weir, and Mike Williams. The Expo is our chance to provide a showcase of native plants to the local community, well worthwhile in our shire, which, contains growth areas such as Wallan and Beveridge, with high migrant populations. The opportunity to see and buy native plants is important because the choice of native plants from local sources remains very limited.

On the same theme, we commenced the Gardens for Wildlife project three years ago, to try and increase awareness of the local environment and the beauty of native plants. Once again this was effectively suspended over the last year. We plan to recommence attending Wallan Market days, to sell GFW membership and to provide a selection of low-growing indigenous natives, suitable for new gardens.

Under these difficult times, thanks go to all committee members for their ongoing dedication to continue in their roles. Special thanks go to Bill Barker for his long, unswerving commitment to our group. He was the first member of the Mitchell group whom I met and he soon phoned and called in to obtain a membership payment. Such direct personal contact ensures the growth of organisations. Bill was involved in all our activities including tree planting projects. He has chosen not to seek re-election to our committee so that he can enjoy a proper retirement.

In conclusion we hope for a lockdown free 2021, but recognise that enthusiasm for gatherings may remain subdued. Accordingly our program may rely less on guest speakers in the short term but the plan is still to meet regularly and continue our regular "plant table" with discussion about specimens from our gardens and of to continue having plant sales. The ongoing involvement of our long-serving committee remains essential to our success.

APS Mitchell Treasurer's Report 2021...

By Christine Cram

Australian plant society Mitchell Group Inc. Balance Sheet for the Time Period to November 15th 2021

CURRENT ASSETS

Cash Assets (Float Petty cash)	53.10
Cash in Bendigo Bank	5182.58
Projector (2012) (D)	394.88
Laptop & Program (2013) (D)	378.11
Laser pointer & 2 speakers (2014)	57.02
Tripod screen (2014)	104.61
Library books	636.94
4 Announcement signs (2013) (D)	167.10
2 double sided & 1 retractable banners (2012) (D)	547.56
Spring plant EXPO banner	211.41
Gardens for Wildlife banner	465.10
Total current assets	8198.41

LIABILITIES

Biolink alliance (uncashed cheque)	100.00
Total current liabilities	100.00

EQUITY **8098.41**

INCOME

Membership	1050.00
Monthly meetings	92.10
Percentage of plant sales @monthly meetings	31.00
Norcen Financial services – COVID grant	500.00
TOTAL	1673.10

EXPENDITURE

Membership	895.00
Speakers fees	50.00
Monthly meetings (room hire)	83.00
Refunds for double payment of membership	12.00
Gardens for Wildlife - Plants	120.00
- Burgess Signs Pty Ltd	346.50
Department of Justice	59.20
Miscellaneous expenditure and petty cash	50.00
Ventraip Australia	107.40
TOTAL	1723.10

NETT OPERATING LOSS **50.00**

Financial members 21

C. M. Cram, Treasurer

Reminders, APS Victoria Diary Dates & Other Events

Thank you

- For the various contributions of articles, answering pesky questions, event information, photos, feedback, proof-reading, researching & providing other information as needed and general support...

A BIG THANK YOU TO:

Chris Clarke,
Christine Cram,
Ian Julian,
Barbara Mau,
Victoria Morris,
Pat Denko,
Norbert Ryan,
Russell Wait.

APS VIC DIARY DATES...

COVID-19 (coronavirus), restrictions may apply or effect APS-related events .

APS Victoria will endeavour to keep event status updated on the APS Victoria website: <https://apsvic.org.au/events/>

Checking with the event organiser is advised.

March 19 - APS Yarra Yarra Autumn Plant Sale. Eltham Community & Reception Centre, 903 Main Rd, Eltham. 10am-4pm.

April 9 - APS Geelong Australian Native Plant Sale 'Wirrawilla' 40 Lovely Banks Rd, Lovely Banks. 8:30am-4pm.

May 7 - APS Mornington Peninsula Plant Sale

May 14 - APS Melton & Bacchus Marsh Plant Sale. 9am-1pm. The venue is expected to be St Andrews Uniting Church Bacchus Marsh - To be confirmed.

June - APS Vic COM to be advised.

June 25 & 26 - APS Ballarat Winter Flower Show. Robert Clarke Centre, Ballarat Botanic Gardens, Gilles St, Ballarat. 10am-4pm.

August 27 & 28 APS Yarra Yarra Australian Plants Expo. Eltham Community & Reception Centre, 801 Main Rd, Eltham. 10am-4pm.

September 1—Wimmera Biodiversity Seminar 2022. Details to follow.

September 3 - (to be confirmed) APS Wilson Park (Berwick) Plant Sale. Wilson Botanic Gardens, Berwick. In conjunction with City of Casey Garden Expo.

September 17 & 18 - APS Bendigo Plant Sale.

September 25 & 26 APS Loddon Murray COM and Quarterly Gathering. In Swan Hill.

October 1 & 2 APS Grampians Group Pomonal Native Flower Show. Pomonal Hall. 9am-4pm.

(Continued on page 15)

Committee & Contact Information

AUSTRALIAN PLANTS SOCIETY, MITCHELL GROUP INC.

PO Box 541, Kilmore, Victoria, 3764

No. A0054306V

Email: mitchell@apsvic.org.au

Website: www.apsmitchell.org.au

Committee Members

President: Norbert Ryan 0428 180 651
Vice President: Dawn McCormack
Secretary: Ian Julian 0438 270 248
Email: secretary@apsmitchell.org.au
Treasurer/Memberships:
Christine Cram 0458 238 270
Committee: Jeanine Petts, Victoria Morris & Maureen Thomas.
Group Librarian: Volunteer position open
Plant Sales: Volunteer position open
Newsletter Editor: Jeanine Petts 0409 029 603
Gardens for Wildlife Coordinator: Gerry Wun Ho
Email: g4w@apsmitchell.org.au

Newsletter contributions:

Contributions should be sent to Jeanine Petts
Email: wattlegum@southernphone.com.au

Post: PO Box 381, Pyalong Vic 3521

For inclusion in the next Newsletter please forward contributions prior to the first Monday of each month.

Local Nurseries open for business ...

Please remember to support our local native nurseries...

Valley of 1000 Hills Nursery (David & Helen Laurie) Supplying indigenous tubes stocks. 150 Reid Rd, Reedy Creek. Open Saturdays 10am to 5pm. Phone: 03 5784 9286

Ironstone Park (Peter & Joan Broughton) Specialising in rare, unusual & hard to find native plants. Lot 33 Paling Rd, Heathcote. Open by appointment: The garden is looking fabulous with many unusual natives worth looking at. Call Pete on Ph: 0419 878 950 if you would like an appointment or arrange to have plants dropped off.

Russell Wait - Eremophila specialist
Russell grows *Eremophila*, some standard *Grevillea*, and does occasionally have a small quantity of other species. Held in his garden is the Botanical Collection of Eremophila for Plant Trust: which, he has held for approximately 25 years. 11 Tranter Close, Riddells Creek. Open by appointment: Visitors need to telephone first to arrange access. Phone: 0428 388 211

Diary Dates & Other Events continued...

(Continued from page 14)

September 11 – 16, 2022 - Australian Flora - Past Present Future, ANPSA Biennial Conference 2022 – Kiama, New South Wales. Preliminary details of the Conference, pre- and post-Conference tours and the beautiful town of Kiama can be found on the APS (NSW) website:

<https://austplants.com.au/ANPSA-Biennial-Conference-2022>

September 26 to 30, 2022 - 7th Global Botanic Gardens Congress, Melbourne. *Influence and Action: Botanic Gardens as Agents of Change.* Includes a youth program for future gardens' leaders aged 18 to 24. Further details can be found at:

7gbgc.org

Fabulous Peas 2022

FJC Rogers Biennial Seminar

15th - 16th October 2022

Discover the extraordinary world of Australian pea plants.

Saturday York on Lilydale, Mount Evelyn

Speakers with expertise in identifying, growing and propagating peas. Learn about current research into propagation and growing-on techniques. Evening dinner and an entertaining speaker.

Plant sales of common and unusual pea species. Book sales. Displays. Raffle.

Sunday Coach tours to public and private native gardens which include a wide variety of pea species.

Art exhibition and sale featuring pea plants from 8th – 16th October at Karwarra Australian Botanic Garden. Plant sales.



Expressions of interest: fabulouspeas2022@gmail.com

<https://apsvic.org.au/fjc-rogers-seminar-2022/>

Hosted: Australian Plants Society Maroondah Inc.



AUSTRALIAN PLANTS SOCIETY MITCHELL GROUP INC.

Email: mitchell@apsvic.org.au

PO Box 541, Kilmore Victoria, 3764

Website: www.apsmitchell.org.au

Inc# A0054306V

2021/22 MEMBERSHIP/RENEWAL FORM – July 1 to June 30

This is a combined membership form for APS Vic and APS Mitchell

Please use this form instead of the form sent out with the APS Victoria newsletter

For insurance purposes people who join APS Mitchell must also join APS Victoria Inc.

(Please tick whichever applies) **Application** **OR** **Renewal**

Title:	Mr / Mrs / Ms / Miss
Surname/s:	
Given name/s:	
Postal Address:	
Town/Suburb:	
Postcode:	
Telephone:	
Email Address:	

(Please tick whichever applies)

Membership Type:		Fees: Note: Membership Year = July 1—June 30		
		APS Victoria	APS Mitchell	Total
<input type="checkbox"/>	Single	\$35.00	\$10.00	\$45.00
<input type="checkbox"/>	Couple/Family (2 adults & 2 dependents)	\$40.00	\$12.00	\$52.00
<input type="checkbox"/>	Student	\$26.00	\$10.00	\$36.00
<input type="checkbox"/>	Organisation	\$44.00	\$10.00	\$54.00
<input type="checkbox"/>	I have paid/pay my APS Vic membership when joining/renewing with another district group. Which Group? : _____		** Single \$10.00 ** Family \$12.00 ** Student \$10.00	
<input type="checkbox"/>	Include only applicable APS Mitchell Fee:			
<input type="checkbox"/>	Optional Australian Plants Subscription	4 issues:		\$15.00
		Total Due:		\$

I wish to apply for APS Vic/APS Mitchell COVID-19 financial hardship fee waiver.

I/We agree I agree to be bound by the Rules and Bylaws of the Society.

Signed:	Date: / /
----------------	------------------

I agree to my name being included in a membership list circulated for members' private use: **Yes** **No**

Payment by: (1) Bank Transfer to BSB 633-000 Account No. 159982271 (Bendigo Bank)

Please include your surname and post code as reference/transaction details

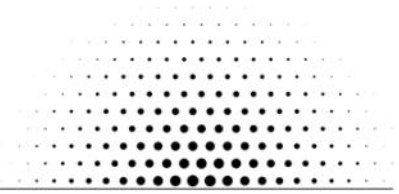
Or (2) Cheque made payable to: APS MITCHELL INC.

Posted to: APS Mitchell Treasurer, P O Box 541, Kilmore Vic 3764

Or (3) Pay via cash or cheque at an APS Mitchell [monthly meeting](#) (usually 3rd Monday of the month 7:30pm John Taylor Room, Kilmore Library, Sydney St Kilmore. See [website](#) for details)

MITCHELL SHIRE COUNCIL.

COVID-19 Community Facility Safe Plan



COVID Safe Plan For APS Mitchell Group Inc. Organisation

PURPOSE

Mitchell Shire Council requires a COVID-19 Safe plan for groups and organisations who wish to return using Council owned or managed facilities. The following plan supports a safe approach for building use. Council welcomes the inclusion of any special guidance from your peak bodies and associations where this has been provided.

SCOPE

This plan applies to all people entering the KILMORE LIBRARY JOHN TAYLOR ROOM building located at 12 SYDNEY STREET KILMORE in line with the easing of COVID-19 restrictions identified by the Department of Health and Humans Services.

PLAN

3.1 Pre-Return Risk Assessment

Prior to people attending the site a Risk Checklist must be completed identifying how the requirements for physical distancing and people density will be maintained. A checklist to enact the plan is attached in Appendix 1

3.2 Considering groups needs

Organisers will discuss potential vulnerabilities with all group members and encourage individual participants to consider their own risk and need to attend. The group may need to consider supporting different members depending on their circumstances. Circumstances may have changed post COVID-19, for example they may now have additional carer's responsibility or family members with specific health risks.

Social and physical vulnerabilities that might affect a person attending the facility include:

- Immune-compromised: may limit attendance or may require additional controls
- Social isolation: managing return to social settings may not be easy for some people
- Need to assist family with child minding or other activities

Our plan for managing our members is:

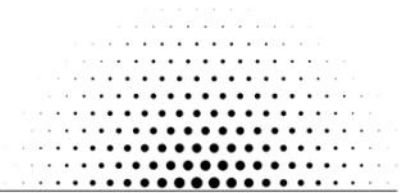
- Sending Covid-19 safe plan to all members with the meeting groups notice
- A copy of the Covid-19 Safe plan with the meeting registration book
- Limit numbers to current DHS prescribed restriction number's
- Update all members as circumstances change

Any person who is unwell should not enter the building. This includes presenting with cold or flu symptoms including fever, runny nose, coughing, sore throat, aches or diarrhea. People with symptoms will be asked to leave.

This plan has been communicated to all affected members of the group.

MITCHELL SHIRE COUNCIL.

COVID-19 Community Facility Safe Plan



(Continued from page 17)

3.3 Return to facilities

3.3.1 Physical distancing measures

Physical distancing measures mean that people from separate households must be more than 1.5 metres from each other. In addition, a minimum space of 2 metres x 2 metres is required for every person in any room they access.

Spaces (e.g. corridors) where there is a potential for people to come in contact with each other may exist in the building. It is acceptable that people walk past each other in these spaces as the amount of time they are together is minimal. However, they are not to stop in these spaces and, if possible, the movement of members should be managed so that people will not physically brush past each other in this space.

Rooms in the building and the maximum number of people allowed (**subject to current restriction limits on total numbers**):

Room Name	Size (width X depth)	Max people (width x depth/2)
John Taylor Room		Max 40 people

Signs will be placed into any room where the maximum occupancy is less than the maximum allowed into the entire facility to advise that people are to wait until the room is vacated.

Cleanliness

Cleaning arrangements for the building are to be documented.

On entry to the building it is advised that every person wash their hands with soap and water or carries hand sanitiser to apply at entry. Everyone should avoid touching their faces.

For this building, at the end of every session any equipment and all tables and chairs used by the members need to be cleaned by the meeting organiser using soap and water with washable or disposable cloths. Spray and wipe is also satisfactory for cleaning.

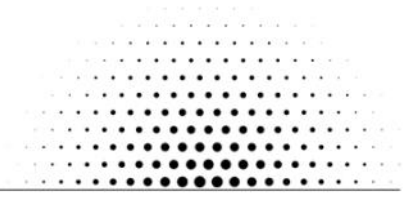
Chairs with soft covers will, where possible, not be used as these are difficult to wipe down.

Council clean as per schedule arranged with the Contracts Management Coordinator at Mitchell Shire Council. This this has been communicated to each building manager.

(Continued on page 19)

Covid Safe Meeting Plan...

MITCHELL SHIRE COUNCIL. *COVID-19 Community Facility Safe Plan*



(Continued from page 18)

COVID-19 Infection

If a member is diagnosed with COVID-19, the following process will apply:

- Notify members who may have had contact with the person per DHHS guidance
- Ensure the privacy of the individual is maintained
- Seek assistance from Council contact
- Inform Council to arrange a deep clean of the building

3.6 Breach of the policy

Everyone will be treated with respect and it is expected that members will adhere to guidelines to physical distancing to help minimise the risk of COVID-19 being spread. Should someone test positive who attended a meeting space their privacy will be maintained, however Council will need to support a contact tracing regime to inform others.

3.7 Legal Sources of policy

- [National COVID-19 Safe Workplace Principles](#)
- [NCCC COVIDSafe plan](#)
- *Occupational Health and Safety Act 2004 (VIC)*
- *Occupational Health and Safety Regulation 2017 (VIC)*
- *Disability Discrimination Act 1992 (Cth)*
- *Equal Opportunity Act 2010 (VIC)*

Appendix 1 – Checklist (to be completed for each session and retained by user group)

Before activity

- Date and time of activity _____
- Activity type _____
- Rooms used (e.g. hall and kitchen) _____
- Responsible person name (must be present throughout activity)

The following available:

- Advice on COVID-19 available to everyone –
e.g. www.dhhs.vic.gov.au/staying-safe-covid-19
- Specific vulnerabilities determined and vulnerable group members encouraged to participate in other ways or to make arrangements with organisers for any special requirements to facilitate attendance
- Room sizes and number of people in each room signed

(Continued on page 20)

Covid Safe Meeting Plan...

MITCHELL SHIRE COUNCIL.

COVID-19 Community Facility Safe Plan



(Continued from page 19)

- Places where it will be difficult to maintain 1.5m spacing identified
- Signs for 1.5m and COVID-19 displayed
- Attendance sheet available and completed by all people entering facility
- Consideration for leaving doors open to allow access through doors without touching
- Advised patrons to hand wash/ hand sanitise as soon as they enter the building (consider leaving the outer toilet door propped open to avoid touching)
- Soap and water or disinfectant spray and disposable cloth (e.g. paper towel) available to clean surfaces touched
- Gloves available

Other risks to be managed (please list, use reverse of sheet if more space required)

During activity

- Encourage participants not to bring belongings into centre (less to contaminate and clean)
- All attendees have been asked if they are unwell or have a temperature
- All attendees have been asked to wash their hands upon entry
- All attendees have provided their contact information on attendance sheet
- All attendees have been informed about safe distancing (1.5m)
- All attendee have been advised of other risks to be managed (please see list, use reverse of sheet if more space required)

After activity

- All items used (including tables and chairs) washed with soap and water or sprayed and wiped with a disinfectant. This is the responsibility of the meeting organiser
- This form and the attendance sheet completed and stored in a centralised location (e.g. office) – to be made available upon request

Plan completed by:

Name	Ian Julian
Role	Secretary APS Mitchell Group Inc.
Contact Number	0438 270 248
Email	apsmitchell@gmail.com
Date	28-01-2021
Signature	<i>Ian Julian</i>