

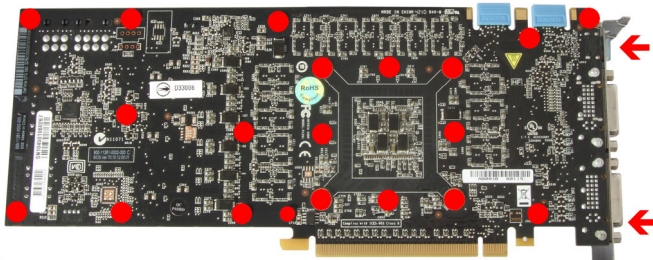
## Description

Thank you for purchasing a graphics card waterblock manufactured by aqua computer. The aquagraFX for GTX 580 has been specifically designed for graphics cards according to reference design of the chip manufacturer. The aquagraFX for GTX 580 effectively cools the RAM, voltage regulators and GPU of your graphics card. The base part of the waterblock is manufactured from pure copper for outstanding performance and durability.

## Installation

### Step 1:

Remove the originally installed air cooling unit from the graphics card. The procedure necessary to perform this might slightly vary depending on the graphics card. Some of the original screws use a Torx drive, a suitable screw driver is included in the delivery of the aquagraFX for GTX 580. Remove the screws in-

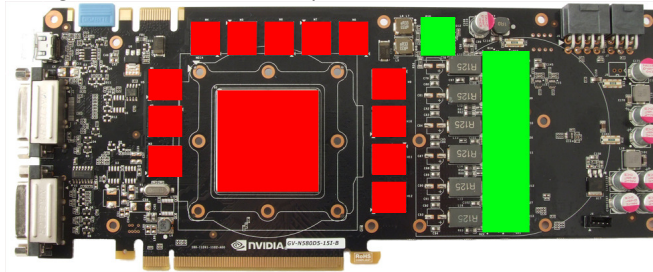


indicated with red dots in the figure. Use extreme caution not to damage any of the highly sensitive components of the graphics card! Disconnect the fan connector while lifting the air cooling unit off the graphics card.

### Step 2:

Remove all thermally conductive pads from the graphics card and clean all surfaces with direct contact to

the cooling unit from remaining thermal compounds using benzine if necessary.



Apply a thin layer of thermal compound to the GPU and the RAM modules. These components are marked red in the figure. The thermal compound must not be electrically conductive! Cut fitting pieces from the thermally conductive pad supplied with the aquagraFX and place them on top of the voltage regulators as indicated by green rectangles.

### Step 3:

Attach the aquagraFX for GTX 580 to the graphics card. To do so, at first carefully and evenly screw in the four screws adjacent to the GPU, afterwards the remaining screws (thirteen screws M3x4 mm).

### Step 4:

Carefully check that the waterblock has level contact to all relevant components of the graphics card. Do not power on the graphics card or the PC if the cooler does not perfectly fit the graphics card! In this case, disassemble and repeat the mounting procedure. All screws must not be overly tightened to prevent the PCB from twisting!

### Step 5:

Insert the graphics card to your PC and integrate the waterblock into your cooling system. Be sure not to connect any waterblocks in parallel but only consecut-

ively. A detailed instruction on building a watercooling system and plug&cool connectors as well can be found on our website [www.aqua-computer.de](http://www.aqua-computer.de) – please check the section support/download.

### Step 6:

Put the water cooling system into operation, but do not connect any other PC components to the mains supply! Check the waterblock as well as the fittings for leakages and do not put your PC into operation unless you can definitively eliminate the possibility of coolant leaking from the system! If any component has been in contact with coolant, do not put it into operation before it is completely dry again! For operating the graphics card, the waterblock must be correctly mounted and be connected to a water cooling system featuring adequate cooling performance! For corrosion inhibition, either Double Protect Ultra or a mixture of water and ACfluid according to the preparation instructions provided with ACfluid must be used as coolant!

## ATTENTION:

**Disregarding the instructions may lead to severe damages! Aqua Computer GmbH & Co. KG cannot be held liable for damages or injuries resulting from improper installation or use of the product!**

Thank you again for choosing an aqua computer product.