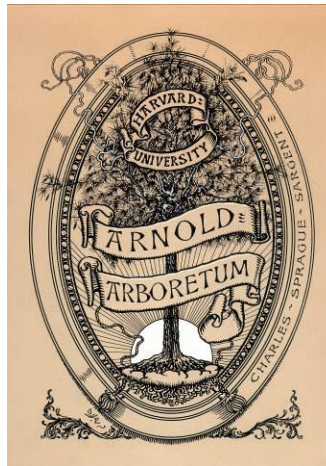


Archives II A-2

Alfred Rehder (1863-1949) papers, 1898-1949: Guide



The Arnold Arboretum of Harvard University

© 2023 President and Fellows of Harvard College

II A-2

Alfred Rehder (1863-1949) papers, 1898-1940: Guide Archives of the Arnold Arboretum of Harvard University 125 Arborway, Jamaica Plain, Massachusetts

© 2023 President and Fellows of Harvard College

Descriptive Summary

Repository: Archives of the Arnold Arboretum, Jamaica Plain, MA

Call No.: II A-2

Location: Archives

Title: Alfred Rehder (1863-1949) papers, 1898-1949

Date(s): 1898-1949

Creator: Alfred Rehder

Quantity: 1 box, 1 bound volume, 4-drawer file cabinet, 114 drawer card index

Language of material: English, German, Spanish and French

Abstract: Alfred Rehder first came to the Arboretum in 1898 while on assignment for *Moller's Deutsche Gartner-Zeitung* where he held the position of Associate Editor. Intending only to stay in America for half a year he was persuaded to join the Arboretum's staff and he remained at the Arboretum until, and beyond, his retirement in 1940. He was appointed Curator of the Arboretum's Herbarium in 1918, became editor of the *Journal of the Arnold Arboretum* in 1927, and Harvard appointed him Associate Professor of Dendrology in 1934. The collection consists of biographical material, correspondence from 1898 until 1949, papers on nomenclature, a bibliographic index, and photographs of and by Rehder.

Note: Access to Finding Aid record in [HOLLIS](#).

Preferred Citation: Alfred Rehder (1863-1949) papers, 1898-1949. Archives of the Arnold Arboretum of Harvard University.

Additional Material: An index to the majority of Alfred Rehder correspondence can be found in the [Arnold Arboretum Correspondence Database](#). See also X A-4 Accession Lists – Historic Photographs, Box Inventory, Folder 4 - Photographs taken in the Arnold Arboretum, A-937 to 1300 by A. Rehder. 1898-1928 and Folder 19 – M1-M1315. Photos by E. H. Wilson and A. Rehder. (and others)

Processing Information

June 2011, Liz Francis. Historical Note by Sheila Connor, 2012. Revised by Larissa Glasser, 2023.

Acquisition Information

Provenance: This collection was transferred from the Arnold Arboretum's departmental holdings to the Arboretum's Archives in 1984.

Terms of Access

Researchers seeking to examine archival materials are strongly encouraged to make an appointment. The Director, or an office of origin, may place restrictions on the use of some or all of its records. The extent and length of the restriction will be determined by the Director, office of origin, and the Archivist.

Terms of Use

The copyright is held by The President and Fellows of Harvard College for the Arnold Arboretum Archives of Harvard University. The copyright on some materials in the collection may be held by the original author or the author's heirs or assigns. Researchers are

responsible for obtaining written permission from the holder(s) of copyright and the Arnold Arboretum Archives prior to publishing any quotations or images from materials in this collection.

Photocopies may be made at the discretion of the Arnold Arboretum Archives staff. Permission to make photocopies does not constitute permission to reproduce or publish materials outside the bounds of the fair use guidelines.

Biographical Note:



Alfred Rehder, 1927

"His position in botany and in horticulture is so lofty and so unique that it would be folly to compare him with others in these categories. By his farsightedness of purpose and by the intermingling of his projects he has produced such a volume of useful work that he has carved his own monument . . ."

From [Alfred Rehder, 1863-1949](#) by [Clarence E. Kobuski](#)
Journal of the Arnold Arboretum 30 (1) 1950

In "[The Making of a Botanist](#)", Gerhard Rehder (1908-1996), Alfred Rehder's son, traces his family's long association with botanical and horticultural enterprise that began in 1815 with the founding of [Muskauer](#), the great landscape park on the border between Poland and Germany and would eventually lead to his father's career at the Arnold Arboretum.

Alfred Rehder was born on September 4, 1863 at Waldenburg in Sachsen Germany, the first child of Paul Julius (1833-1917) and Thekla Rehder (1839-1897). His father was the Park Director for the Princes of Schonburg-Waldenburg, and his paternal grandfather, [Jakob Heinrich Rehder](#) had been Park Director for Prince Puckler at his park in Muskau in Upper Lusatia, Silesia. His paternal grandmother was the daughter of the head gardener on the estates of Count Bruhl in Brandenburg. After attending Gymnasium in Zwickau, Sachsen Rehder returned to his family's home in 1881 and apprenticed to his father for three years. In 1884, Rehder began two years study at the [Botanischer Garten und Botanisches Museum Berlin-Dahlem](#) under renowned botanists, Professors August Wilhelm Eichler (1839-1887) and Paul Friedrich August Ascherson (1834-1917). He next spent a brief time with a florist in Frankfurt am Main then obtained a position with Gustav Schrefeld, who would later become his father-in-law, at the park in Muskau where his grandfather had worked. His next position was head gardener at the Grand Ducal Botanic Garden in Darmstadt and he went on to hold the same position at the [Botanic Gardens in Gottingen](#) from 1889-1895. As head gardener, Rehder instituted a complete reorganization of the gardens and began conducting research, writing about plants, and developing contacts with other botanists. Rehder left the Garden in 1895 and moved to Erfurt where he became the Associate Editor of [Moller's Deutsche Gartner-Zeitung](#). He published over a hundred articles during the three years he was associated with the magazine.

In 1898, at age 34, Rehder sailed for the United States to undertake dendrological studies for [Moller's Deutsche Gartner-Zeitung](#) and to investigate fruit growing and viticulture in the northeastern United States for the German government. Wishing to pursue independent studies while pursuing his work for the German periodical, he wrote Charles Sprague

Sargent (1841-1927), the first Director of the Arnold Arboretum, and arranged a six month term as a student-worker performing manual labor on the grounds for \$1.00 a day. As noted in *Arnoldia* in 1938 "his first task was to eliminate the weeds in the then newly established shrub collection by the vigorous use of a hoe." Sargent quickly recognized his capabilities and persuaded Rehder to become a member of his staff. Almost immediately Rehder began contributing all the dendrological articles for Liberty Hyde Bailey's *Cyclopedia of American Horticulture*, a commitment that lasted several years.

Arnold Arboretum Workman's Time for Week ending July 2, 1898 containing Alfred Rehder's signature. Workmen time record kept by Arboretum Propagator and Superintendent Jackson Thornton Dawson

In 1901, Sargent assigned him the enormous task of assembling the bibliographic data required in compiling *The Bradley bibliography: a guide to the literature of the woody plants of the world published before the beginning of the twentieth century*.

The research and publication of the bibliography was funded by Abby A. Bradley as a memorial to her father, William Lambert Bradley (1826-1894) an innovator in the field of chemical fertilizers.



Rehder spent the next seventeen years compiling detailed information for the over 100,000 titles that would eventually appear in a five-volume, 3,895-page publication that brought together references to the literature of woody plants published in all "books, pamphlets, and articles in periodicals and other serials in all languages up until the end of 1900." Rehder next contributed extensive taxonomic work to *Plantae Wilsonianae; an enumeration of the woody plants collected in western China for the Arnold Arboretum of Harvard University during the years 1907, 1908, and 1910* edited by Professor Sargent and published in 1913. That same year he was awarded an honorary Master of Arts degree from Harvard University for his work on the *Bradley Bibliography*, and in 1918 he became the Curator of the Herbarium at the Arnold Arboretum, a position he held until his retirement. During Rehder's 22-year supervision the herbarium grew by 300,000 specimens.

In 1902, Rehder returned to Germany to complete his "*Synopsis of the Genus Lonicera*," In 1904, he and Arboretum colleague John George Jack (1861-1949) travelled together in the western United States and in Canada taking photographs and collecting plant specimens. Between 1904 and 1906 Rehder spent time in Europe and in Russia obtaining bibliographic data for the *Bradley Bibliography* from botanical libraries, herbaria, and museums. He attended the International Botanical Congress of 1905 in Vienna on behalf of Harvard University, and in Dresden in 1906 he married Anneliese Hedwig Schrefeld (1875-1967). The Rehders had three children; Harald Alfred (1907-1996), Gerhard Oskar (1908-1996), and Sylvia Sophie (1912-1996).

The first volume of the *Journal of the Arnold Arboretum* was issued in 1919, and although Rehder's name is not listed as an editor until 1926, he had urged its creation and contributed a substantial number of articles. It was not until Sargent's death in 1927 that Rehder became senior editor, a position he held for the next thirteen years. Also in 1927, the first edition of Rehder's *Manual of Cultivated Trees and Shrubs Hardy in North America* was published. Based to a great extent on the taxonomic aspects of woody north-temperate plants in the Arboretum's living collections, it proved to be such a valuable identification manual for botanists and horticulturalists alike that a second printing was quickly required. A revised second edition was published in 1940, and a reprint of the second edition was published in 1986. In 1997, Rehder's *Manual* was chosen as one of "75 Great American Garden Books" by the American Horticultural Society. In his paper "The End of a Generation of Harvard Botanists," Reed C. Rollins (1911-1998) wrote of Rehder that "In spite of his preoccupation with the technical aspects of taxonomy, he was much interested in the problems of the horticulturist. He provided many horticulturists with individual attention, in addition to the professional guidance they obtained from his published works" (*Taxon* 1 (1) 1951). Originally considered by American editors as too botanical for horticultural publications and too horticultural for botanical ones, Rehder's "Zur Geschichte der Geholzeinfuhrungen nach Nordamerika," was first published in *Mitteilungen der Deutschen dendrologischen Gesellschaft* in 1932. In 1946, after being translated back into English by the Arboretum's librarian, Ethelyn M. Tucker "*On the History of the Introduction of Woody Plants into North America*" was published *Arnoldia*.



Rehder, enwrapped in a sheath of *Roystonea regia*, at the Atkins Garden Soledad, Cuba, February 24, 1928, on right, at his 70th birthday celebration, September 1, 1933

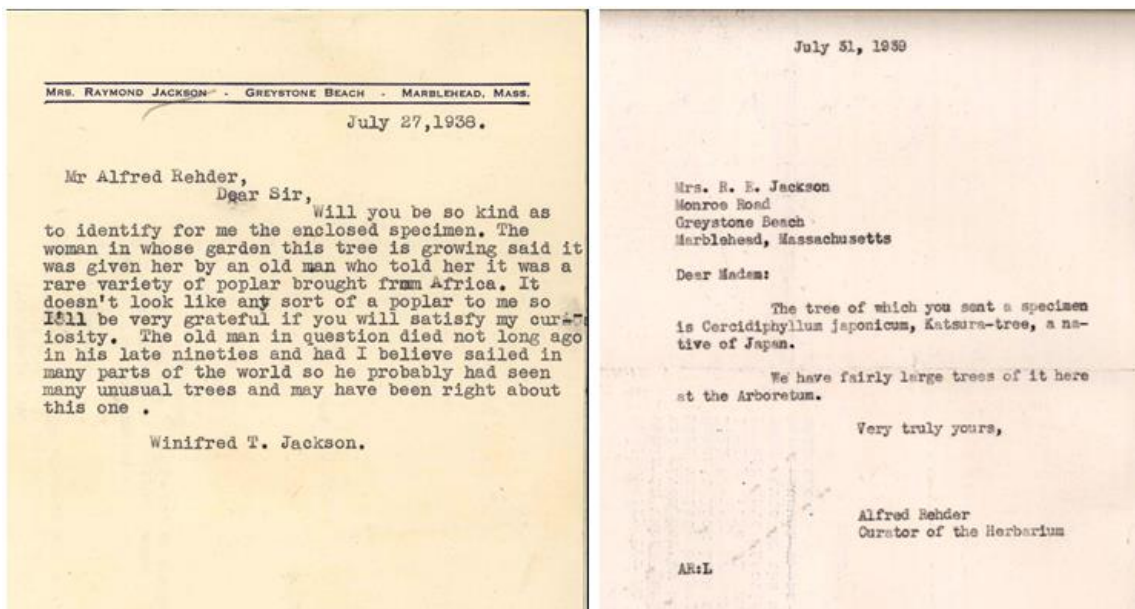


E.D. Merrill and Alfred Rehder, Plant Taxonomy Section, Sixth International Botanical Congress, 1935

Rehder made a series of trips to Europe during 1909, 1911, and 1928 and again represented Harvard University and was an active member of the Nomenclature Committee at the International Botanical Congress which was held in 1930 in Cambridge, England. In 1934, Harvard appointed him Associate Professor of Dendrology and the following Rehder travelled to Europe for the last time to attend the International Botanical Congress held in

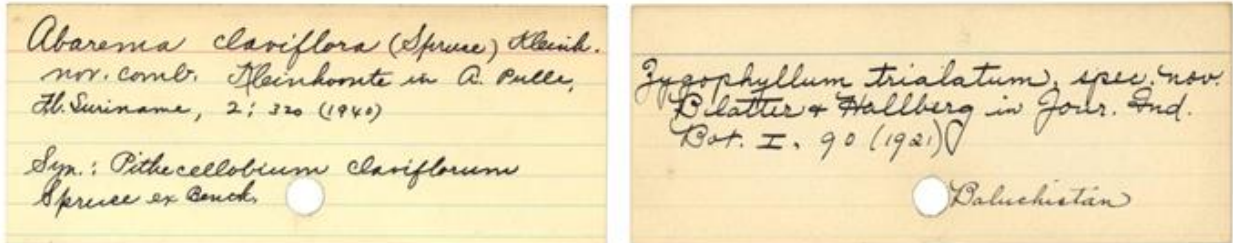
Amsterdam Both he, and the Arboretum's Director, Elmer Drew Merrill (1876-1956), served International Committee on Nomenclature Vascular Plants.

Being actively involved in professional societies and organizations on both continents Alfred Rehder served as an important connection between colleagues in Europe and the United States, often passing information or requests across the Atlantic Ocean. His correspondence dates from the late 1890s until 1949, nine years after his official retirement, and reflects Rehder's far ranging interests and connections within the botanical and horticultural world. The collection includes letters to and from colleagues such as [Liberty H. Bailey](#) (1858-1954), founder of the the [Liberty Hyde Bailey Hortorium](#) at Cornell University in 1935; [Heinrich Handel-Mazzetti](#) (1882-1940), an Austrian botanist and early plant explorer in South West China; and [Alice Eastwood](#) (1859-1953), Head of the Department of Botany at the [California Academy of Sciences](#) about taxonomic and nomenclatural issues. He offered instruction and encouragement to many plant collectors such as [Max J. Dinklage](#) (1864-1935), a plant collector in West Africa who was responsible for the earliest major collections from Liberia; [Henri Humbert](#) (1887-1967), French Professor at the University of Algiers and botanist and plant collector in Madagascar; [Cornelius H. Muller](#) (1909-1997) (also Mueller), internationally recognized authority on *Quercus* for whom the C.H. Muller Library at the University of California, Santa Barbara is named; and [L.J. Brass](#) (1900-1971) who served as botanist on the various Archbold Expeditions for the American Museum of Natural History. Their adventurous letters often describe the exotic places they traveled and the difficulties they encountered obtaining plant specimens. He fielded inquiries from horticulturalists, nurserymen, and plant breeders like [J. Horace McFarland](#) (1859-1948) and [Niels Ebbesen Hansen](#) (1866-1950). Rehder also answered plant identification requests or provided help with nomenclatural queries from amateur botanists such as [Frederick Gillan Floyd](#) (1869-1941) and responded to the many questions posed by a legion of enthusiastic, although often perplexed, gardeners. Rehder took all inquiries seriously, responding promptly to everyone who wrote him.



Beginning in 1915 Rehder maintained a card file of literature references for woody north-temperate plants. In this index, which was referred to by Arboretum staff as the "Rehder Cards," contained all the available references found in the periodic literature. Rehder noted the botanical names, and their synonyms, of all the plants that had appeared in his

Manual. Also recorded were new cultivated woody plants along with new varieties and forms. The index also documented changes in taxonomic interpretation and nomenclature which enabled staff to make any necessary corrections to the living collection's records and to the plant labels on the specimens growing on the grounds. Until 1998 and the advent of the [living collections database, BG-BASE](#), Arboretum taxonomists continued to add new cards and make annotations to preexisting ones through reviews of current literature and when revisionary, monographic, and floristic studies were undertaken.



The first and last alphabetical entries filed in the "Rehder cards" both likely in Rehder's hand

Alfred Rehder officially retired in 1940 at age 77, but continued to work at his desk every morning on a comprehensive bibliography of cultivated woody plants based on his index which at that time held close to 150,000 cards. He completed the manuscript for the [Bibliography of Cultivated Trees and Shrubs Hardy in the Cooler Temperate Regions of the Northern Hemisphere](#) in 1946, saw this major work through the press, and celebrated its publication with his Arboretum colleagues in June, 1949. He continued on with his regular Arboretum schedule until early July: Alfred Rehder, Associate Professor of Dendrology, Emeritus, died on July 21, 1949.



Ailanthus altissima, December 1900



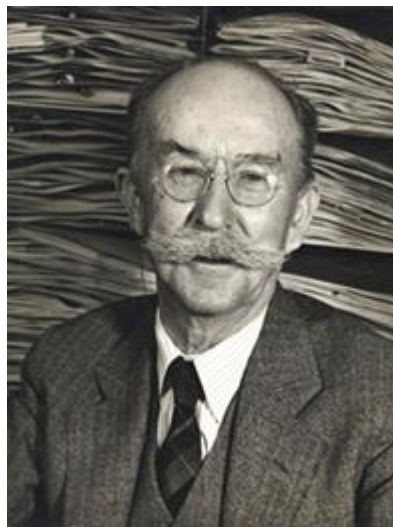
Liquidamber styraciflua, February 1900

Meadow Road by Alfred Rehder, looking toward Hunnewell Building (*above on left*) and toward Forest Hill (*above on right*) both are lantern slides

Over his lifetime Rehder was the author at least 1400 names (>800 species name + >600 varietal or subspecific names) and authored, in both German and English, more than 1,000

scientific articles in botanical and horticultural publications; a [complete bibliography](#) was compiled by his granddaughter Anneliese Rehder and was published following Kobuski's biography of Rehder in the *Journal of the Arnold Arboretum*. Over 60 genera and species are named in Rehder's honor. Not as well-known as his research and writing is the fact that Rehder took some of the earliest images of the Arboretum most of which are filed by genus in species in the Arboretum's historic photograph collection; at the end of the finding aid scanned pages from the Arboretum's accession records of photographs lists the images taken by Rehder.

At the time of his death Rehder was a member of the following Botanical and Horticultural Societies:



Alfred Rehder, 1939. Dmitri Kessel, Photographer, 315 West 57th Street, New York, NY

Honorary Fellow of the Botanical Society of Edinburgh
Honorary Fellow of the Royal Horticultural Society of London
Fellow of the American Academy of Arts and Sciences
Fellow of the American Association for the Advancement of Science
Honorary Membership in Deutsche Dendrologische Gesellschaft
Honorary Membership in Ceskoslovenske Dendrolijike Spolecnost
Honorary Membership in Rhododendron Society
Honorary Membership in Pennsylvania Horticultural Society
Corresponding Member of the Peking Society of Natural History
Corresponding Member of the Botanical Society of Japan
Foreign Member of the Linnean Society of London
Member of the Society for Horticultural Science
Member of the Deutsche Botanische Gesellschaft
Member of the Boston Natural History Society
Member of the New England Botanical Club
Member of the Society of Plant Taxonomists
Member of the Botanical Society of America

Scope and Content

The majority of the collection consists of approximately two thousand letters that are indexed in the Archives' [Correspondence Database](#). On site the correspondence occupies a four-drawer file cabinet and is arranged alphabetically by correspondent. For correspondents with more than one letter the letters are in date order. Some of the letters are typed, others are handwritten. The quality of paper varies widely, the most fragile being the onion skin paper that was used for copies. Many of Rehder's replies to the correspondent are included as copies on the verso of the original letters; there are also many carbon copies of his replies on onion skin paper. While most of the correspondence is in English, there is a substantial amount in German, and some in French and Spanish. There is also a bibliographic card index and a listing of Rehder's photographs described in this guide.

Arrangement

- Series I:** Biographical Material
- Series II:** Photographs of Alfred Rehder
- Series III:** Papers on Nomenclature
- Series IV:** Publications
- Series V:** Rehder Card Index
- Series VI:** Photographs by Alfred Rehder

Container List

File Drawer 1

Series I: Biographical Material

Folder

1: Biographical Material

- "Alfred Rehder 1863-1949" memorial essay by J.T.P. Bijhouwer. Includes 1949 photograph of Rehder. September 15, 1948
- "[A Tribute to an Eminent Botanist](#)" essay for the occasion of Rehder's retirement? *Bulletin of Popular Information*. 4: 6 (2)1938
- "Prof. Rehder, Noted World Botanist, Dies." Obituary. July 22, 1949
- "Sought Rare Books 10 Years" article announcing the publication of Rehder's book. Newspaper clipping. July 9, 1911
- "The Making of a Botanist". [Arnoldia 32 \(4\) 1972](#)
- "Professor Rehder's Retirement". [Bulletin of Popular Information 8 \(11\) 1940](#)
- Rehder's death announcement issued by Harvard College. July 25, 1949
- "Dendrologische Notizen: Geburtstag von Alfred Rehder". [Kurzmittelungen / Deutsche Dendrologische Gesellschaft 133\(Oct: 2013\)](#). (German)



Alfred Rehder, Ernest Henry Wilson, Charles Sprague Sargent, Charles Edward Faxon, Camillo Schneider, August, 1916



John George Jack, Alfred Rehder, Ernest Jesse Palmer, Clarence Kobuski, Louis Victor Schmidt September 1, 1933 (Photograph by Hugh Raup)

Series II: Photographs of Rehder

Folder

1: Photographs

- Paul Julius Rehder, father of Alfred Rehder, 4½"x2¼" print, undated
- In the Arboretum library, 1, 5"x7" and 1, 8"x9¾" b&w print, September, 1898
- In the Arboretum with E.H. Wilson and C.S. Sargent. "8x10" b&w print, August, 1916
- Rehder, 4, 4"x6" prints, 1927
- In the Arboretum with C. Kobuski, E.J. Palmer and unidentified women, 2½"x3¼" b&w print, 1929
- Sitting in front of the Hunnewell building on his 70th birthday, 4¼"x5½" b&w print, September 1, 1933
- On his 70th birthday with John G. Jack, E.J. Palmer, C. Kobuski, and L.V. Schmitt, 2, 5"x7" b&w prints, September 1, 1933

- On his 70th birthday with his wife, daughter, and Arboretum staff, 5"x7" b&w print, September 1, 1933
- On the steps of the Hunnewell building on his 70th birthday, 3½"x5½" b&w print, September 1, 1933
- On his 70th birthday with John G. Jack, 3½"x5" negative. September 1, 1933
- On his 70th birthday with John G. Jack, 4½"x6" b&w print. September 1, 1933
- In the Arboretum with John G. Jack and Oakes Ames. Undated 3"x5" b&w print
- In the Herbarium. 8"x10" b&w print, 1939



- With *Sequoiadendron giganteum* at Mariposa Park, California, 5"x7" b&w print, July 14, 1939 (above) [Rehder far right holding hat]
- *Examining a Rhododendron specimen in the Herbarium*, 8"x10" b&w print, 1939
- Portrait published in *Journal of the Arnold Arboretum* Vol. 21, No. 4. October, 1940 6"x9½"
- Rehder. Undated 7"x9"

2: Photographs [Mounted on Boards]

- In the Arboretum library. September, 1898, 5x6"
- Rehder in front of *Magnolia stellata* at the Hunnewell building. June 8, 1922
- Rehder. December, 1927. 4x6"
- At the Harvard Tropical Garden in Soledad, Cuba. February 24, 1928. 5x7"
- Rehder. 1930. 3.5x5"
- On his 70th birthday with John G. Jack, E.J. Palmer, C. Kobuski, and L.V. Schmitt. September 1, 1933. 4.5x6"
- On his 70th birthday. September 1, 1933. 4x9"
- On his 70th birthday. September 1, 1933. 3.5x5.5"

- On his 70th birthday with his wife, daughter, and Arboretum staff. September 1, 1933. 3x4.5"
- In the Arboretum with four horticulturalists visiting from Germany. April 28, 1938. 4.5x5.5" 4½"
- Portrait published in *Journal of the Arnold Arboretum* Vol. 21, No. 4. December, 1940. 6x9.5"
- Rehder in the Arboretum with George Neville Jones, Eric Hulten, and H.M. Raup, undated, 4x5.5"
- Rehder with Eric Hulten, undated, 4x5.5"



Forest Hills Road, photograph by Alfred Rehder, summer, 1890

Series III: Papers on Nomenclature Folder

1: Papers on Nomenclature 1889-1934

- Excerpt: *Britton in Translation*. 1889
- Sprague, T.A. *Alphabetical List of Nomina Conservanda (Phanerogamae)*. Royal
- Botanical Gardens, Kew. "Bulletin of Miscellaneous Information" 1921, Reprint., extensive annotations by A. Rehder
- Comments on the Proposals of the British Imperial Botanical Conference for Modification of the International Rules of Nomenclature, 1924
- Announcement: Appointment of committee on nomenclature at International Congress of Plant Sciences, Ithaca, New York, August 16 to 23, 1926
- Letter: [Valchenien Jerringar ?] to Dr. A.B. Rendle, British Museum regarding the International Committee of Nomenclature. Wageningen, November 1927
- Propositionen Int. Gartenbau Kongresz in Wien 1927.
- Question Présentée au Congrès International de Botanique à Cambridge (England) 1930 Jakob Eriksson. March 24, 1929
- Proposals for modification of the International Rules of Nomenclature. Kenneth K. MacKenzie. March 192.
- Preliminary Programme: Fifth International Botanical Congress, Cambridge. United Kingdom] August 1930

- Receipt for Registered Article. Jamaica Plain Post Office. August 29, 1931
- Notice: Fifth International Botanical Congress Report of Proceedings, August 28, 1931
- Recommendations to the International Botanical Congress, Cambridge 1930
A.C. Seward, J.W. Bews, H.J. Fourcade, H.E. Lloyd, C.E. Legat, H.M. Steven, A.W. Borthwick, J. Burt Davy and C.C. Robertson .
- Vorschläge der deutschen Studienkommission über Nomenklaturfragen für den internationalen Gartenbau-kongress in London 1930
- Letter: Unknown, Gray Herbarium to Alfred Rehder regarding the Committee for Phanerogamae and Pteridophyta. March 31, 1931
- Letter: [Fernald] to H. Harms, Botanisches Museum regarding the Editorial Committee of the International Horticultural Congress. October 29, 1931
- Notice: Dr. M.J. Sirks to [Unknown]. VI International Botanical Congress. Wageningen [Holland], February 29, 1932.
- Programme: Société Nationale d'Horticulture de France. X Congrès International d'Horticulture. Paris 1932. 2 copies.
- Letter accompanying list of generic names to be proposed for Nomina Conservanda. December 1932.
- Letter: P.J. van Melle to Oakes Ames. January 6, 1934.
- The Nomenclature of Some Plant Families by J. Adams. datestamp: Division of Botany, Central Exp. Farm, Ottawa. March 31, 1934.
- Letter: P.A. Weatherby to Dr. A.B. Rendle. July 20, 1934.
- Notice: Dr. M.J. Sirks to [Unknown]. VI International Botanical Congress. Wageningen [Holland], July 30, 1934.
- Instructions on how to submit motions regarding nomenclature at Sixth International Botanical Congress, Amsterdam. [July-September 1934].



Bussey Brook Valley in fall, 1899 (*above on left*) and in spring, 1904 (*above on right*) photographs by Alfred Rehder

2: Papers on Nomenclature 1935-1948

- Agenda: The Rhododendron Society, 21st Annual General Meeting. 1935
- Announcement: VI International Botanical Congress, Amsterdam. undated
- Letter: Fred J. Chittenden, Royal Horticultural Society to Members of the International Horticultural Committee on Nomenclature. May 22, 1935. 2 copies.

- Letter: Fred J. Chittenden, Royal Horticultural Society to Members of the International Horticultural Committee on Nomenclature. August 17, 1935.
- Changes and additions to Naamlijst van Coniferen. undated
- Changes made at Amsterdam in the Rules ed. 3. [1935], typescript. 2p.
- Alphabetical List of Generic Names conserved by the Special Committee for Phanerogamae & Pteridophyta appointed at Amsterdam. [1935] (handwritten note: See also Rules ed. 3, p.131. Kew Bull. 1940:81-134.)
- Index Nominum Conservandorum A. 1930 (inserted by hand "et 1935")
- Propositorium. Manuscript, extensive annotations by A. Rehder. 18p.
- International Rules of Botanical Nomenclature. Changes of articles and recommendations of ed. 3 (1935) proposed by various botanists and accepted by the Sixth Congress of 1935 in Amsterdam. 10 p. undated
- "Principal decisions concerning nomenclature made by the Sixth International Botanical Congress, Amsterdam (1935)" Manuscript, 4p. undated
- "Principales décisions du VI Congrès International de Botanique D'Amsterdam 1935, relatives aux réglés de la nomenclature par W. Robyns." *Bulletin de la Societe Royale de Botanique de Belgique*. LXIX, fasc. 1, 1936. Reprint
- Proposal of modifying for practical reasons, a number of botanical names as published in the "Handlist of Trees and Shrubs Cultivated in the Royal Botanic Gardens, Kew." undated
- Eleventh International Horticultural Congress, Rome, September 16-21, 1935. Horticultural Nomenclature. Specific names proposed for general horticultural use.
- Proposed Nomina Conservanda. Unstarred names. Includes letter of explanation by Rehder to Miss M. L. Green, Kew. April 15, 1936.
- Excerpt: "On Desvaux's Ferns". *Contributions from the Gray Herbarium of Harvard University*. CXIV (1936). p. 27.
- Letter: Fred J. Chittenden, Royal Horticultural Society to International Horticultural Congress, Berlin 1938. Horticultural Nomenclature Committee. March 18, 1938.
- *Über Mängel und Unklarheiten in den botanischen Nomenklaturregeln*. 1940?



Quercus rehderi (*Q. ilicifolia* x *Q. velutina*) ©Jan De Langhe, Ghent University Botanical Garden Used with permission of the photographer



Two accessions of *Quercus rehderi* growing in the oak collection at the Arnold Arboreum, Collection Researcher

- Letter: W.H. Camp, New York Botanical Garden to Rehder. March 11, 1948.
- Letter: W.H. Camp, New York Botanical Garden to Rehder. June 11, 1948.
- Letter: Dr. F.P. Jonker, Botanical Museum and Herbarium of the University [Utrecht, Netherlands] to Executive Committee of Nomenclature. September 2, 1948.
- Letter: Office of the Secretary, American Society of Plant Taxonomists to Rehder. November 9, 1948.



Rehder Pond, named for him in 1990, with *Sambucus Canadensis* in bloom, lilac collection in middle distance, and the top of Bussey Hill in the far distance, photograph by J.G. Jack, 1900

3: Papers on Nomenclature Undated

- Additional Examples of a New Combination.
- The Botanical Name of the Douglas Fir. T.A. Sprague and M.L. Green.
- Botanical Society of America. Systematic section, tentative program
- "The Correct Authority for the Combination *Chamaecyparis nootkatensis* (Lamb.)"
- Generic nomenclature.
- Index cards [5]. Miscellaneous notes
- List of committees of the International Botanical Congress.
- List of plants, 29 p.
- Memorandum for M.L. Fernald re: Wilmott's comments on the conservation of Pteridium.
- Names in D-F which may need Conservation.
- Names Not or Incorrectly Cited in Index Kewensis.
- Proposed Amendments to the International Rules of Nomenclature.
- Proposed *Nomina Conservanda*.
- Remarks on the Amendments.
- Reply to the memoranda of Dr. Rehder, Dr. Sprague, and Miss M.L. Green.
- Notes: Undetermined numbers in Herb. [Herbarium] Arnold [Arboretum].
- "What Constitutes Valid Publication of a New Combination?"

Series IV: Publications

Folder

1: Articles published in *Horticulture Magazine*

- "Arnold Arboretum Hybrids". undated
- "Notes From the Arnold Arboretum"
 - 12/19/1908
 - 10/02/1909
 - 10/16/1909
 - 10/23/1909
 - 11/06/1909
 - 11/13/1909
 - 11/20/1909
 - 11/27/1909
 - 12/04/1909
 - 12/11/1909
 - 12/18/1909
 - 06/18/1910
 - 06/25/1910
 - 07/16/1910
 - 07/23/1910
 - 07/30/1910
 - 08/06/1910
 - 08/13/1910
 - 08/20/1910
 - 09/03/1910
 - 08/01/1913

Alfred Rehder, Arboretum Library, 1898



and on the steps of the Hunnewell Building, September 1, 1933

- Rehder, Alfred. *Manual of Cultivated Trees and Shrubs: Hardy in North America*. New York: Macmillan, 1927. Two copies interleaved with Rehder's handwritten annotations: 1, two volume set, 1, three volume set
- Rehder, Alfred. *Synopsis of the Genus Lonicera*. [St. Louis, Mo.], 1903. [[catalog record](#)].

Series V: Rehder Card Index (Hunnewell Building, Curation Department, floor 4S) Bibliographic index of the literature of cultivated trees and shrubs

The index to the woody plants of the North Temperate Zone was begun by Alfred Rehder in 1915 and was continued until the retirement of Arboretum taxonomist Stephen A. Spongberg in 1998. It is an unpublished index consisting of approximately 200,000 cards arranged alphabetically by genus and species. Each entry represents a unique citation to published botanical names at all ranks (including infra-specific ranks). The cards also contain references to illustrations, and articles of general biological interest.



A section of the 113 drawer card index of 49
catalog that contains Rehder's
index to the literature of woody
plants of the North Temperate
Zone

Number of cards in this index				
70,374	May 1, 1926	7311	710	Dec 29, 1926
750	Aug 20, 1926	74912	2005	Oct 30, 1946
274	Oct 7, 1926	75183	270	June 23, "
380	Oct 16, 1926			
100 cards = 20 cm (was made only) and 200 cards = 40 cm				
477 1/2 cards for 10 cm. very pressed together				

No. of cards in this file					
139,301	146	11-16-46	141,161	201	Aug. 14, 1946
139,447	282	1-10-46	141,362	153	Aug. 22, 1946
139,729	787	1-25-46	141,515	275	Sept. 10, 1946
140,466	274	2-21-46	141,790	205	Sept. 28, 1946
140,740	135	3-22-46	141,795	105	Nov. 1, 1946
140,875	150	5-20-46	141,000	167	Nov. 4, 1946
141,025	136	6-18-46	141,267	267	Nov. 7, 1946

Number of cards in this index					
37609	424	June 20, 1932	38033	387	Nov. 17, '34
39,269	746	Sept. 12, 1932	39179	234	Jan. 11, '34
39725	373	Oct. 21, 1932	40142	400	Aug. 24, '34
39823	326	Jan. 8, 1933	40732	432	Sept. 24, '34
39847	422	July 1, 1933	41154	477	Oct. 21, '34

No. of cards in this file					
131,695	484	7-23-42	132,732	60	7/9/1943
132,179	316	10-18-42	132,992	115	8/9/1943
132,495	290	1-22-43	132,907	134	9/9/1943
132,785	171	2-8-43	133,041	319	10/27/1943
132,952	419	4-5-43	134,360	276	11/5/1943
133,375	314	5-10-43			
133,529	148	6-7-43	134,646	92	11/5/1943
133,722	2037		134,733	1006	

DATE	No. Cards Added	Total	DATE	No. Cards Added	TOTAL
Oct. 9, 1948	162	147,467	Aug. 19, 1949	42	148,152
Dec. 31, 1948	116	147,583	Sept. 9, 1949	4	148,156
Feb. 12, 1949	139	147,721	Nov. 9, 1949	269	148,425
Feb. 24, 49	76	147,797	Nov. 14, 1949	7	148,432
June 19, 49	263	148,060	Dec. 9, 1949	75	148,507
July 5, 49	14	148,074	Feb. 2, 1950	80	148,587
July 29, 49	26	148,110	Feb. 17, 1950	74	148,663

DATE	No. Cards Added	Total	DATE	No. Cards Added	TOTAL	
Feb. 19, 1950	150,866	65	150,931	March 1, 1950	14	151,401
Nov. 29, 1951	185	151,086	April 3, 1952	315	151,716	
Dec. 13, 1951	24	151,114	Apr. 8, 1952	90	151,796	
Jan. 7, 1952	93	151,199	Apr. 22, 1952	64	151,860	
Jan. 30, 1952	164	151,363	June 5, 1952	74	151,934	
Feb. 29, 1952	24	151,387	July 10, 1952	209	152,243	

Twenty cards track the "Number of cards in this index," with the first record count noted May 1, 1926 when the number stood at 70,376. The initial number may have been an estimate as there is a notation "477 1/2 cards for 10 cm. very pressed together" thereafter a monthly count was added with the last monthly tabulation occurring on January 8, 1964. On February 27, 1976 Ida Hay estimated that there were approximately 200,000 cards by measuring the number of cards in an inch in each of the 113 drawers. Cards continued to be added until 1998.

Series VI: Photographs by Alfred Rehder

Prior to Ernest Henry Wilson's (1876-1930) being based at the Arboretum following his long career as a plant explorer, Rehder and John George Jack (1861-1949) took many of the earliest images of the Arnold Arboretum and Rehder also photographed many species in situ in the United States and during his travels throughout Europe.

The majority of Rehder's photographs are filed alphabetically by genus and species and reside in the Arboretum's historic photograph collection, however a substantial number are represented by both prints and lantern slides which are held in the Arboretum's as lantern slide collection. Two series, the A series: "Photographs taken in the Arnold Arboretum" list Rehder's images taken between 1898 and 1927 however the list is not arranged chronologically or by plant name, but by accession numbers A-937 to A-1,300. The second series, the M series, consists of images of plants taken in locations outside the Arboretum and also doubles as listing of lantern slides. In this series, accession numbers M-591 to M-966 describe Rehder's images. These are also listed by accession numbers rather than by

date or plant name. A selection of Rehder's images and sans of both of the A and M series follows.



"Holm Lea," [C.S. Sargent Estate] Brookline, Mass., View across pond towards residence, photograph by Alfred Rehder, July 1899



Acer rubrum, photograph by Alfred Rehder, 1898 (above on left)

Acer rubrum (at left) and *Acer saccharinum*, Jamaica Plain, Mass., Carolina Ave. photograph by Alfred Rehder, 1899 (above on right)



Acer saccharinum, Massachusetts, Jamaica Plain, Roanoke Avenue, photograph by Alfred Rehder, September 1900 (above on left)

Acer saccharinum, *Cotinus coggygria* (foreground), Germany, Muskau Park, photograph by Alfred Rehder, July 24, 1901 (above on right)



Acer platanoides with *A. saccharum*, Pond Street,, Jamaica Plain, Mass., photograph by Alfred Rehder, May 1900 (*above on left*)

Ulmus americana, Jamaica Plain, Mass., Green Street corner of Rockview Street, photograph by Alfred Rehder, 1898 [annotated: "2nd largest tree in Boston, Rich. Hayden, Park Supt., Aug. 12, 1936] (*above on right*)



Magnolia soulangeana, New York, Rochester, as an avenue tree, photograph by Alfred Rehder, July 1899 (*above on left*)

Acer macrophyllum, British Columbia, Vancouver, as an avenue tree, photograph by Alfred Rehder, August 16, 1904 (*above on right*)



Abies lasiocarpa and *Picea engelmannii*, Lake Louise near Laggan Alberta, photograph by Alfred Rehder, August 1904 (*above on left*)

Populus tremuloides var. *aurea*, New Mexico. Sacramento Mountains, near Cloudcroft, the group of small, light trees are populus, *Pinus ponderosa*, *Pseudotsuga* and *Abies concolor* in back, photograph by Alfred Rehder, August 28, 1916 (above on right)



Tsuga heterophylla, Vancouver, B.C., photograph by Alfred Rehder, August 16, 1904 (on left)

Lysiloma bahamensis, Florida, Paradise Key, photograph by Alfred Rehder, May 3, 1920 (on right)



Ulmus americana, Massachusetts, Boston, as avenue trees on Commonwealth Ave., photograph by Alfred Rehder, September 1898 (above on left)

Ulmus americana, Mass., Boston, avenue on Boston Common, photograph by Alfred Rehder, September 1898, (both images, above center and on right)



Lilacs (*Syringa*) along Bussey Hill Road, photograph by Alfred Rehder, 1899 (*above on left*)

Magnolia soulangeana, Arnold Arboretum, photograph by Alfred Rehder, April 1907 (*above on right*)

A series: "Photographs taken in the Arnold Arboreum" A937-A1289 by Alfred Rehder

A-937	Library	Arnold Arboretum	Photo by A.Rehder	Nov. 1902
A-938	Library	"	"	Nov. 1902
A-939	Herbarium building. <i>Magnolia Soulangeana</i> in front.	"	"	Apr. 1907
A-940	<i>Daphne genkwa</i>	"	"	Apr. 1917
A-941	<i>Daphne genkwa</i>	"	"	Apr. 1917
A-942	<i>Diervilla florida</i> . var. <i>venusta</i> Rehd.	"	"	May, 1917
A-943	<i>Diervilla florida</i> . var. <i>Venusta</i> Rehd.	"	"	May, 1917
A-944	<i>Spiraea nipponica</i> Maxim.	"	"	June 1917
A-945	<i>Ligustrum vulgare</i> L. var. <i>sempervirens</i> (in fruit)	"	"	Sept 1918
A-946	<i>Juniperus virginiana</i> L.	"	"	Nov. 1918
A-947	<i>Tsuga canadensis</i> Carr. f. <i>pendula</i> Beiss.	"	"	Nov. 1918
A-948	<i>Hamamelis vernalis</i> Sarg.	"	"	Feb. 1920
A-949	Administration Building.	"	"	June 1921
A-950	<i>Pseudolarix amabilis</i> Rehd.	"	"	June 1921
A-951	<i>Malus Scoulerii</i> .	"	"	May, 1921
A-952	<i>Viburnum Lentago</i> L.	"	"	Dec. 1923
A-953	<i>Hicoria glabra</i> Sweet.	"	"	Apr. 1898
A-954	<i>Quercus alba</i> L.	"	"	Apr. 1898
A-956	<i>Fagus grandifolia</i> . Group opposite Hemlock Hill	"	"	Apr. 1898
A-956	<i>Berberis Thunbergii</i> (Shrub Collection)	"	"	May, 1898
A-957	<i>Pieris floribunda</i> .	"	"	May, 1898
A-958	<i>Chamaedaphne calyculata</i>	"	"	May, 1898
A-959	<i>Chamaedaphne calyculata</i>	"	"	May, 1898
A-960	<i>Hydrangea Bretschneideri</i> .	"	"	June 1898
A-961	<i>Pothergilla major</i> Lodd.	"	"	May, 1898

A-962	Amelanchier ovalis. Arnold Arboretum	Photo by A.Rehder	May, 1898
A-963	Cotoneaster multiflora Ege.	"	May, 1898
A-964	Viburnum tomentosum Thbg.	"	May, 1898
A-965	Fendlera Wrightii.	"	May, 1898
A-966	Fendlera Wrightii. Hell.	"	June 1898
A-967	Philadelphus Falconeri Sarg.	"	June 1898
A-968	Sambucus canadensis L.	"	June 1898
A-969	Sambucus canadensis L.	"	June 1898
A-970	Sambucus Canadensis L.	"	June 1898
A-971	Hydrangea Bretschneideri Dipp. (Shrub Collection)	"	July 1898
A-972	Juniperus virginiana on rock. West slope of Hemlock Hill.	"	July 1898
A-973	South Street Entrance.	"	July 1898
A-974	Library.	"	Sept 1898
A-975	Library.	"	Sept 1898
A-976	Gordonia alstamaha Sarg.	"	Sept 1898
A-977	Gordonia alstamaha Sarg.	"	Sept 1898
A-978	Chionanthus virginiana L. (Fruiting branch)	"	Sept 1898
A-979	Chionanthus virginiana L. (Fruiting branch)	"	Sept 1898
A-980	Schisandra chinensis Baill. (Fruiting Branch)	"	Sept 1898
A-981	Viburnum dilatatum Thbg. (Fruiting branch)	"	Sept 1898
A-982	Lonicera japonica Thbg.	"	Sept 1898
A-983	Acer rubrum L.	"	Sept 1898
A-984	Rosa Wichuraiana Cresp.	"	Sept 1898
A-985	Pinetum in winter.	"	Sept 1898
A-986	South Street Entrance in winter.	"	Mat 1898

A-987	Hemlock Hill in winter.	Photo by A. Rehder	Feb. 1899
A-988	Acer rubrum L. Bark.	"	Mar. 1899
A-989	Viburnum prunifolium L.	"	Mar. 1899
A-990	Catalpa speciosa Hard.	"	Mar. 1899
A-991	Magnolia stellata Maxim.	"	Apr. 1899
A-992	Magnolia stellata Maxim.	"	Apr. 1899
A-993	Magnolia Kobus	"	Apr. 1899
A-994	Magnolia Kobus	"	Apr. 1899
A-995	Amelanchier laevis Wieg. Forest Hill Gate Road.	"	Apr. 1899
A-996	Amelanchier laevis Wieg. Slope of Bussey Institution.	"	Apr. 1899
A-997	Betula lenta L. Meadow Road.	"	Apr. 1899
A-998	Betula lenta L. Meadow Road	"	Apr. 1899
A-999	Betula lenta L. "ith catkins.	"	Apr. 1899

A-1000	<i>Acer rubrum</i> L. Meadow Road.	Photo by A. Rehder.	Mar. 1899
A-1001	<i>Malus baccata</i> . Dawson Nursery.	" "	Apr. "
A-1002	<i>Prunus americana</i> Marsh. Valley Road.	" "	" "
A-1003	<i>Spiraea arguta</i> Zabel. Shrub Collection.	" "	" "
A-1004	<i>Spiraea arguta</i> Zabel. Shrub Collection.	" "	" "
A-1005	<i>Cercis canadensis</i> L. near pond.	" "	" "
A-1006	<i>Syringa</i> group along Bussey Hill Road.	" "	May "
A-1007	<i>Syringa</i> group along Bussey Hill Road	" "	" "
A-1008	<i>Syringa pubescens</i>	" "	" "
A-1009	<i>Malus Halliana</i> Near Forest Hills Gate.	" "	" "
A-1010	<i>Malus Sieboldii</i> Rehd. Near Forest Hills Gate.	" "	" "
A-1011	<i>Malus Sieboldii</i> Rehd. Near Forest Hills Gate.	" "	" "
A-1012	<i>Malus Spectabilis</i> . Near Forest Hills Gate.	" "	" "
A-1013	<i>Malus Halliana</i> .	" "	" "
A-1014	<i>Pyrus betulifolia</i> Bge. Near Forest Hills Gate.	" "	" "
A-1015	<i>Prunus maritima</i> Marsh.	" "	" "
A-1016	<i>Halesia carolina</i> L. Shrub Collection.	" "	" "
A-1017	<i>Halesia carolina</i> L.	" "	" "
A-1018	<i>Rhododendron Vaseyi</i> .	" "	" "
A-1019	<i>Rhododendron Vaseyi</i> .	" "	" "
A-1020	<i>Rhododendron Vaseyi</i> .	" "	" "
A-1021	<i>Rhododendron obtusum</i> Pl.	" "	" "
A-1022	<i>Rhododendron obtusum</i> Pl.	" "	" "

A-1023	<i>Exochorda racemosa</i> Rehd.	Photo by A. Rehder.	May 1899
A-1024	<i>Syringa pekinensis</i> .	" "	June "
A-1025	<i>Pterostyrax hispida</i> .	" "	" "
A-1026	<i>Syringa villosa</i> Vahl.	" "	" "
A-1027	<i>Syringa pekinensis</i> Rupr.	" "	" "
A-1028	<i>Rhododendron arborescens</i> Torr.	" "	" "
A-1029	<i>Cornus racemosa</i> Lam.	" "	" "
A-1030	<i>Viburnum dentatum</i> L.	" "	" "
A-1031	<i>Kalmia latifolia</i>	" "	" "
A-1032	<i>Syringa japonica</i> . Forest Hills Gate.	" "	" "
A-1033	<i>Syringa villosa</i> Vahl.	" "	" "
A-1034	<i>Syringa Japonica</i> .	" "	" "
A-1035	<i>Kalmia latifolia</i> L.	" "	" "
A-1036	<i>Elaeagnus multiflora</i> Thunb. var. <i>ovata</i> Servet.	" "	" "
A-1037	Administration Building.	" "	" "
A-1038	<i>Prunus utahensis</i> Dieck.	" "	" "
A-1039	<i>Acer platanoides</i> L. f. <i>globosum</i> Nichols.	" "	" "
A-1040	<i>Clethra alnifolia</i> L.	" "	" "
A-1041	Shrub Collection seen from north east with the cactus group in the middle.	" "	" "
A-1042	Shrub Collection seen from northeast with the Cactus group in the middle.	" "	" "
A-1043	<i>Larix laricina</i> .	" "	Aug. "
A-1044	<i>Solanum Seaforthianum</i> . City Park, Detroit.	" "	" "
A-1045	<i>Juniperus</i> group.	" "	Sept "
A-1046	<i>Juniperus virginiana</i> L.	" "	" "
A-1047	Bussey Brook Valley looking West.	" "	" "

A-1048	<i>Ilex verticillata.</i>	Photo by A. Rehder.	Sept 1899
A-1049	<i>Ribes fasciculatum</i> var. <i>chinense</i> Maxim.	"	" "
A-1050	<i>Picea rubra.</i>	" "	" "
A-1051	<i>Ilex opaca</i> L.	" "	" "
A-1052	<i>Picea rubra.</i>	" "	" "
A-1053	<i>Ilex verticillata</i> Gray. Shrub Collection	" "	" "
A-1054	<i>Picea mariana.</i>	" "	" "
A-1055	<i>Aralia elata</i> Seem.	" "	" "
A-1056	<i>Liquidambar Styraciflua</i> L.	" "	" "
A-1057	<i>Quercus bicolor</i> Willd.	" "	" "
A-1058	<i>Quercus bicolor</i> Willd.	" "	" "
A-1059	<i>Quercus bicolor</i> Willd. Bark.	" "	" "
A-1060	Snow covered shrubs.	" "	" "
A-1061	<i>Magnolia stellata</i> Maxim.	" "	" "
A-1062	<i>Viburnum trilobum</i> Marsh. (in bud) <i>Viburnum Sargentii</i> Koehne. (buds unfolding)	" "	Apr. 1900
A-1063	<i>Prunus subhirtella</i> Mig.	" "	" "
A-1064	<i>Prunus subhirtella</i> Mig.	" "	May, "
A-1065	<i>Prunus subhirtella</i> Mig. VAR. <i>pendula</i>	" "	Apr. "
A-1066	<i>Amelanchier oblongifolia</i> Roem.	" "	" "
A-1067	<i>Amelanchier grandifolia</i> Rehd.	" "	" "
A-1068	<i>Amelanchier oblongifolia</i> Roem.	" "	" "
A-1069	<i>Amelanchier spicata</i> H. Koch.	" "	" "
A-1070	<i>Amelanchier oblongifolia</i> Roem.	" "	" "
A-1071	<i>Amelanchier oblongifolia</i> Roem.	" "	" "
A-1072	<i>Rhus canadensis</i> Marsh.	" "	" "
A-1073	<i>Prunus nigra</i> Ait.	" "	" "
A-1074	<i>Prunus nigra</i> Ait.	" "	" "

A-1075	<i>Prunus nigra</i> Ait. fr. luteo.	Photo by A. Rehder.	Apr. 1900
A-1076	<i>Prunus nigra</i> - Ait. <i>angustifolia</i> Marsh. Var. <i>Watsonii</i> Waugh.	" "	May, "
A-1077	<i>Prunus allegheniensis</i> .	" "	Apr. "
A-1078	<i>Prunus americana</i> L.	" "	" "
A-1079	<i>Prunus americana</i> L.	" "	" "
A-1080	<i>Prunus pumila</i> L.	" "	" "
A-1081	<i>Rhododendron obtusum</i> var. <i>Kaempferi</i> Wils.	" "	May, "
A-1082	<i>Daphne Genkwa</i> L.	" "	Apr. "
A-1083	<i>Kalmia polifolia</i> Waugh.	" "	May, "
A-1084	<i>Fothergilla major</i> Lodd.	" "	" "
A-1085	<i>Crataegus coccinioides</i> .	" "	" "
A-1086	<i>Prunus maritima</i> Marsh.	" "	" "
A-1087	<i>Crataegus coccinioides</i> .	" "	" "
A-1088	<i>Crataegus coccinioides</i> .	" "	" "
A-1089	<i>Crataegus texana</i> Buckl.	" "	" "
A-1090	<i>Prunus maritima</i> Marsh.	" "	" "
A-1091	<i>Crataegus Phaenopyrum</i> Med.	" "	" "
A-1092	<i>Viburnum prunifolium</i> L.	" "	" "
A-1093	<i>Enkianthus campanulatus</i> Nichols.	" "	" "
A-1094	<i>Xanthoceras sorbifolia</i> Ege.	" "	" "
A-1095	<i>Cotoneaster multiflora</i> Ege.	" "	" "
A-1096	<i>Cotoneaster multiflora</i> Ege.	" "	" "
A-1097	<i>Photinia arguta</i> .	" "	" "
A-1098	<i>Viburnum Sargentii</i> Koehne.	" "	" "
A1099	<i>Viburnum Sargentii</i> Koehne.	" "	" "
A-1100	<i>Wistaria floribunda</i>	" "	" "
A-1101	<i>Symplocos paniculata</i> .	" "	" "
A-1102	<i>Symplocos paniculata</i> .	" "	" "

A-1103	<i>Rhododendron viscosum.</i>	Photo by A. Rehder	June 1900
A-1104	<i>Cornus alternifolia</i> L.	" "	Aug. "
A-1105	<i>Stewartia pentagyna</i> L'Herit.	" "	July "
A-1106	<i>Stewartia pseudocamellia</i> Maxim.	" "	" "
A-1107	<i>Asclepias tuberosa</i> L.	" "	June "
A-1108	<i>Rosa setigera</i> Michx.	" "	" "
A-1109	<i>Rhododendron "Everestianum"</i>	" "	" "
A-1110	<i>Chionanthus virginica</i> L.	" "	" "
A-1111	<i>Chionanthus virginica</i> L.	" "	" "
A-1112	<i>Sorbaria Aitchisonii</i> Hemsl.	" "	Aug. "
A-1113	<i>Sorbaria Aitchisonii</i> Hemsl.	" "	" "
A-1114	<i>Vaccinium corymbosum</i> L.	" "	" "
A-1115	<i>Xanthoceras sorbifolia</i> Ege.	" "	Sept "
A-1116	<i>Cornus racemosa.</i>	" "	" "
A-1117	<i>Corylus americana</i>	" "	" "
A-1118	<i>Corylus cornuta</i> Marsh. (<i>l. rostrata</i> Ait)	" "	" "
A-1119	<i>Corylus Sieboldiana</i> Bl. var. <i>mandshurica</i> Schneid.	" "	" "
A-1120	<i>Ulmus foliacea.</i> var. <i>umbraculifera</i> Rehd. (grafted high)	" "	" "
A-1121	<i>Cornus racemosa</i> Lam.	" "	" "
A-1122	Meadow Road	" "	" "
A-1123	Meadow Road	" "	" "
A-1124	<i>Calycanthus fertilis</i> Walt. var. <i>ferax</i> Rehd.	" "	Oct. "
A-1125	<i>Celastrus scandens</i> L.	" "	" "
A-1126	<i>Ailanthus altissima</i> Swingle.	" "	Nov. "
A-1127	<i>Catalpa bignonioides</i> Walt.	" "	" "
A-1128	<i>Catalpa speciosa</i> Ward.	" "	" "
A-1129	<i>Ulmus procera</i> Salisb.	" "	" "
A-1130	<i>Thuja occidentalis</i> L. f. <i>filiformis</i> Beiss.	" "	Dec. "

A-1131	<i>Thuja occidentalis</i> L.	Photo by A. Rehder	Dec. 1900
A-1132	<i>Chamaecyparis thyoides</i> var. <i>andelyensis</i> Schneid.	" "	" "
A-1133	<i>Salix glaucophylloides</i> Fern.	" "	Sept "
A-1134	<i>Salix tristis</i> Ait.	" "	" "
A-1135	<i>Hamamelis virginiana</i> .	" "	Oct. "
A-1136	<i>Holodiscus discolor</i> Maxim.	" "	July 1902
A-1137	<i>Alnus incana</i> .	" "	Mar. "
A-1138	<i>Alnus incana</i> . (left) <i>Alnus rugosa</i> . (right)	" "	" "
A-1139	<i>Corylus americana</i> .	" "	" "
A-1140	<i>Salix discolor</i> .	" "	Apr. "
A-1141	<i>Betula pendula</i> .	" "	Mar. "
A-1142	<i>Betula lutea</i> .	" "	" "
A-1143	<i>Betula lenta</i> .	" "	" "
A-1144	<i>Betula papyrifera</i> .	" "	" "
A-1145	<i>Betula populifolia</i> .	" "	" "
A-1146	<i>Betula nigra</i> .	" "	" "
A-1147	<i>Ulmus Thomasii</i> .	" "	" "
A-1148	<i>Dirca palustris</i> .	" "	Apr. "
A-1149	<i>Magnolia denudata</i> (left) <i>Magnolia Soulangeana</i> (right)	" "	" "
A-1150	<i>Magnolia denudata</i> (left) <i>Magnolia Soulangeana</i> (right)	" "	" "
A-1151	<i>Magnolia Kobus</i> (left) <i>Magnolia stellata</i> (right)	" "	" "
A-1152	<i>Fothergilla major</i> .	" "	" "
A-1153	<i>Pieris floribunda</i> .	" "	" "
A-1154	<i>Prunus americana</i> .	" "	" "
A-1155	<i>Amelanchier spicata</i> .	" "	" "
A-1156	<i>Rhododendron canadense</i>	" "	" "
A-1157	<i>Viburnum alnifolium</i> .	" "	May, "

A-1158	Viburnum Lentago (left) Viburnum prunifolium (right)	Photo by A. Rehder	May, 1902
A-1159	Rhododendron obtusum.	" "	" "
A-1160	Wistaria sinensis. on Dr. Smith's house.	" "	" "
A-1161	Viburnum Opulus (left) Viburnum trilobum (right)	" "	" "
A-1162	Rhododendron roseum (left) Rhododendron nudiflorum (right)	" "	" "
A-1163	Magnolia tripetala.	" "	" "
A-1164	Malus Sargentii,	" "	" "
A-1165	Sorbus pohuashanensis.	" "	" "
A-1166	Viburnum alnifolium.	" "	" "
A-1167	Lonicera Korolkowii.	" "	" "
A-1168	Viburnum tomentosum (right) Viburnum tomentosum f. sterile (left)	" "	" "
A-1169	Viburnum tomentosum (right) Viburnum tomentosum f. sterile (left)	" "	" "
A-1170	Zenobia pulverulenta.	" "	" "
A-1171	Magnolia Fraseri.	" "	June "
A-1172	Viburnum cassinoides (left) Viburnum aserifolium (right)	" "	" "
A-1173	Viburnum pubescens. var. Canbyi.	" "	" "
A-1174	Viburnum Pubescens.	" "	" "
A-1175	Nemopanthus mucronata.	" "	Aug. "
A-1176	Rosa blanda-(left) setigera.	" "	July "
A-1177	Rosa blanda (left) Rosa carolina (right)	" "	Aug. "
A-1178	Wood collection	" "	July "
A-1179	Library	" "	" "
A-1180	Campsis Tagliabuena.	" "	" 1900

A-1181	Campsis radicans (left) Campsis Tagliabuena (middle) Campsis chinensis (right)	Photo by A. Rehder	Aug. 1902
A-1182	Campsis radicans (left) Campsis Tagliabuena (middle) Campsis chinensis (right)	" "	" "
A-1183	Magnolia kobus.	" "	July "
A-1184	Magnolia macrophylla. In front of Administration Building.	" "	" "
A-1185	Tilia cordata.	" "	" "
A-1186	Tilia vilgaris.	" "	" "
A-1187	Tilia vilgaris.	" "	" "
A-1188	Tilia tomentosa.	" "	" "
A-1189	Juglans nigra.	" "	Aug. "
A-1190	Prunus serotina.	" "	" "
A-1191	Acer saccharum.	" "	July "
A-1192	Ceanothus americanus.	" "	" "
A-1193	Ilex laevigata.	" "	Sept "
A-1194	Rosa nitida.	" "	June "
A-1195	Rosa Lyonii	" "	" "
A-1196	Rosa nitida.	" "	" "
A-1197	Rhododendron viscosum.	" "	" "
A-1198	Physocarpus opulifolius.	" "	" "
A-1199	Aronia floribunda.	" "	May, 1903
A-1200	Kalmia latifolia.	" "	June "
A-1201	Viburnum affine.	" "	May, "
A-1202	South Street Entrance.	" "	May, "
A-1203	Hemlock Hill with Kalmia latifolia along the road.	" "	June "
A-1204	Hemlock Hill. Trunks of Tsuga canadensis.	" "	" "
A-1205	Kalmia latifolia.	" "	" "
A-1206	Hemlock Hill Road.	" "	" "

A-1207	Hemlock Hill with <i>Kalmia latifolia</i> in bloom.	Photo by A. Rehder.	June 1903
A-1208	Hemlock Hill. <i>Kalmia latifolia</i> in bloom at the foot.	" "	" "
A-1209	<i>Syringa japonica</i> .	" "	" "
A-1210	<i>Rhododendron viscosum</i> .	" "	" "
A-1211	<i>Rhododendron viscosum</i> .	" "	" "
A-1212	<i>Oxydendrum arboreum</i> .	" "	July "
A-1213	<i>Clethra alnifolia</i> .	" "	" "
A-1214	<i>Clethra alnifolia</i> .	" "	" "
A-1215	<i>Clethra alnifolia</i> .	" "	" "
A-1216	<i>Magnolia stellata</i> . In front of Admin. Building	" "	Mar. 1904
A-1217	<i>Magnolia macrophylla</i> .	" "	" "
A-1218	<i>Alnus hirsuta</i> .	" "	" "
A-1219	<i>Quercus palustris</i> .	" "	Feb. "
A-1220	<i>Carya cordiformis</i> .	" "	" "
A-1221	<i>Carya laciniosa</i> .	" "	" "
A-1222	<i>Malus Arnoldiana</i> .	" "	Apr. 1907
A-1223	<i>Malus Arnoldiana</i> .	" "	" "
A-1224	<i>Malus Arnoldiana</i> .	" "	" "
A-1225	<i>Hamamelis japonica</i> .	" "	Feb. "
A-1226	<i>Viburnum dilatatum</i> .	" "	June 1908
A-1227	<i>Viburnum dilatatum</i> .	" "	" "
A-1228	<i>Cladrastris lutea</i> .	" "	" "
A-1229	<i>Indigofera Kirilowii</i> .	" "	" "
A-1230	<i>Sorbaria assurgens</i> .	" "	" "
A-1231	<i>Buddleia Davidii</i> .	" "	July "
A-1232	<i>Prunus japonica</i> .	" "	Sept "
A-1233	<i>Prunus glandulosa</i> .	" "	" "
A-1234	<i>Tripterygium Regelii</i> .	" "	July 1908

A-1235	<i>Tripterygium Regellii.</i>	Photo by A. Rehder.	July 1908
A-1236	<i>Elsholtzia Stauntoni.</i>	" "	" "
A-1237	<i>Elsholtzia Stauntoni.</i>	" "	Sept "
A-1238	<i>Prunus serrulata.</i>	" "	" 1913
A-1239	<i>Prunus serrulata.</i>	" "	" "
A-1240	<i>Prunus serrulata.</i>	" "	" "
A-1241	<i>Prunus serrulata.</i>	" "	Apr. "
A-1242	<i>Prunus serrulata.</i>	" "	May, "
A-1243	<i>Malus Arnoldiana.</i>	" "	" 1917
A-1244	<i>Malus Arnoldiana.</i>	" "	" "
A-1245	<i>Prunus subhirtella.</i>	" "	" "
A-1246	<i>Malus theifera.</i>	" "	" "
A-1247	<i>Malus theifera.</i>	" "	" "
A-1248	<i>Malus sumi.</i>	" "	" "
A-1249	<i>Abies firma.</i>	" "	Oct. 1909
A-1250	<i>Prunus pilosiuscula.</i>	" "	Apr. 1921
A-1251	<i>Magnolia acuminata (trunk)</i>	" "	Mar. "
A-1252	<i>Leptodermis oblonga.</i>	" "	July "
A-1253	Rehder's birthday party.	Photo by Dr. Raup.	Sept 1, 1935
A-1254	<i>Davidia involucrata Vilmoriniana.</i> Reproduced from original drawing by Blanche Ames Ames. 1935		
A-1255	<i>Juniperus chinensis Pfitzeriana</i>	Photo by E.H.Gleason.	Aug. 11, 1930
A-1256	<i>Abies concolor</i>	Photo by E. H. Wilson.	1915
A			
A-1257	Arnold Arboretum (Views).	Syringa collection. Photo by W.R.Merryman	1926.
A-1258*	" " " " " " " "		" "
A-1259	Arnold Arboretum (Views).	Hemlock Hill. Photo by George W. Root,	1927.
A-1260	Arnold Arboretum (Views). Pinetum.	Photo by A. Rehder	March 1904
A-1261	<i>Pseudolarix amabilis</i> <u>Rehd.</u>	" "	Sept 1914

A-1262	<i>Abies homolepis.</i>	Photo. by A. Rehder.	Sept 1914.
A-1263	<i>Abies Veitchii</i> <u>Lindl.</u>	" "	" "
A-1264	<i>Pinus Banksiana</i> <u>Lamb.</u>	" "	" "
A-1265	<i>Picea pungens</i> <u>Engelm.</u> f. <i>compacta.</i>	" "	May, 1917
A-1266	<i>Picea Abies</i> f. <i>Clanbrasilliana.</i>	" "	" "
A-1267	<i>Picea Abies</i> f. <i>procumbens.</i>	" "	" "
A-1268	<i>Picea Abies</i> f. <i>cupressina.</i>	" "	" "
A-1269	<i>Picea Abies</i> f. <i>Remontii.</i>	" "	" "
A-1270	<i>Picea Abies</i> f. <i>Ellwangeriana.</i>	" "	" "
A-1271	<i>Pinus densiflora</i> f. <i>globosa.</i>	" "	" "
A-1272	<i>Taxus cuspidata</i> f. <i>nana.</i>	" "	" "
A-1273	<i>Prinsepia sinensis.</i>	" "	" "
A-1274	<i>Cotoneaster hupehensis.</i>	" "	" "
A-1275	<i>Indigofera amblyantha</i> var. <i>Purdomii.</i>	" "	" "
A-1276	<i>Syringa villosa.</i>	" "	" "
A-1277	<i>Syringa Julianae.</i>	" "	" "
A-1278	Arnold Arboretum (Views.) Pinetum.	" "	Mar. 1904
A-1279	<i>Lycium pallidum.</i>	" "	June 1917
A-1280	<i>Tsuga caroliniana</i> f. <i>compacta.</i>	" "	May, 1920
A-1281	<i>Picea Abies</i> f. <i>pumila.</i>	" "	" "
A-1282	<i>Picea Abies</i> f. <i>nana.</i>	" "	" "
A-1283	<i>Picea Abies</i> f. <i>microsperma.</i>	" "	" "
A-1284	<i>Picea Abies</i> f. <i>parviformis.</i>	" "	" "
A-1285	<i>Picea mariana</i> f. <i>ericoides.</i>	" "	" "
A-1286	<i>Picea Abies</i> f. <i>parviformis.</i>	" "	" "
A-1287	<i>Tsuga caroliniana</i> f. <i>compacta.</i> Tree 10 ft. high, 12 ft. spread.	" "	" "
A-1288	<i>Tsuga caroliniana</i> f. <i>compacta.</i>	" "	" "
A-1289	<i>Tsuga canadensis</i> f. <i>fastigiata.</i>	" "	" "

M series: "Photographs taken outside the Arboretum" M593-M878 by Alfred Rehder

- M-593 *Malus coronaria*. Mass., Brookline, Hort. C. S. Sargent. Enlarged from Mr. Rehder's photo. no. 715. 1902.
- M-594 *Kalmia latifolia*. Mass., Brookline, "Holmlea", estate of C. S. Sargent. Photo. by E. H. Wilson, 1915.
- M-595 *Roystonea regia*. Florida, Paradise Key. Photo. by A. Rehder May 3, 1920.
- M-596 *Trema mollis*. Florida, Paradise Key. Photo. by A. Rehder, May 3, 1920.
- M-597 *Podocarpus nagi*. Fla., Federal Point, S. H. Hart Place. Photo. by A. Rehder, April 29, 1920.
- M-598 Same as M-597.
- M-599 *Diospyros floridana*. Fla., near Little River. Trunk 9 in. in diameter. Photo. by A. Rehder, April 24, 1920.
- M-600 *Eugenia Simpsonia* Sarg. (*Ananomis Simpsonii* Small). Fla., near Little River. Photo. by A. Rehder, April 24, 1920.
- M-601 *Sideroxylum foetidissimum*. Fla., near Miami. Photo. by A. Rehder, April 27, 1920.
- M-602 *Latania spec.* Fla., Federal Point, near E. H. Hart place. Photo. by A. Rehder, April 20, 1920.
- M-603 *Diospyros floridana*. Fla., near Little River. Tree 30 ft. tall. Photo. by A. Rehder, April 24, 1920.
- M-604 *Pinus clausa*. Fla., near Palm Beach. Tree 30 ft. tall. Photo. by A. Rehder, April 29, 1920.
- M-605 *Pinus clausa*. Fla., near Palm Beach. Trunk 1 1/3 ft. in diameter. Photo. by A. Rehder, April 29, 1920.
- M-606 *Exochorda Giraldii* var. *Wilsonii*. Mass., Jamaica Plain, in garden of Mr. Rehder. Photo. by A. Rehder, May 1921.
- M-607 *Populus nigra*. Germany, Saxony, valley of river Mulde near Waldenburg. Photo. by A. Rehder, March 11, 1898.

- M-608 *Taxus baccata*. Germany, Saxony, part at Waldenburg. Low spreading form. Photo. by A. Rehder, March 11, 1898.
- M-609 ~~Quercus Ilex~~ Kew - Royal botanic garden. *Quercus Ilex*. Photo. by A. Rehder, March 21, 1898.
- M-610 Kew - Royal botanic garden. *Hedera Helix* trained over a tree. Photo. by A. Rehder, March 21, 1898.
- M-611 *Wistaria floribunda*. Mass., Brookline, estate of late Prof. C. S. Sargent. Photo. by A. Rehder, May 1898.
- M-612 Holm Lea, Mass., Brookline. Meadow near pond with *Narcissus poeticus*. Photo. by A. Rehder, May 1898.
- M-613 Holm Lea, Mass., Brookline. *Berberis Thunbergii* in front of piazza. Photo. by A. Rehder, May 1898.
- M-614 Holm Lea, Mass., Brookline. *Trillium grandiflorum*. Photo. by A. Rehder, May 1898.
- M-615 Holm Lea, Mass., Brookline. *Cornus florida*. Photo. by A. Rehder, May 1898.
- M-616 Holm Lea, Mass., Brookline. *Viburnum tomentosum* var. sterile. Photo. by A. Rehder, May 1898.
- M-617 Same as M-616. Photo. by A. Rehder, June 1898.
- M-618 Same as M-617.
- M-619 Hunnewell Estate, Wellesley, Mass. *Rhododendron* group. Photo. by A. Rehder, June 1898.
- M-620 Harvard College - Botanic Garden. Mass., Cambridge. *Styrax japonica*. Photo. by A. Rehder, June 1898.
- M-621 *Ginkgo biloba*. Washington, D. C. Photo. by A. Rehder, July 20, 1898.
- M-622 *Tsuga canadensis pendula*. Pennsylvania, Philadelphia, Fairmount Park. Photo. by A. Rehder, July 19, 1898.
- M-623 Holm Lea, Mass., Brookline. *Wistaria chinensis*. Photo. by A. Rehder, May 1898.
- M-624 *Clematis paniculata*. Mass., Chestnut Hill. Growing on house. Photo. by A. Rehder, Sept. 1898.
- M-625 Same as M-624.
- M-626 Same as M-624.
- M-627 *Rhus semialata*. Boston, Jamaica Plain. Photo. by A. Rehder, Sept. 1898.

- M-628 *Rhus semialata* Murr. (*R. javanica* Thbg.) Jamaica Plain, Franklin Park. Photo. by A. Rehder, Sept. 1898.
- M-629 *Hydrangea paniculata grandiflora*. Mass., Jamaica Plain. Photo. by A. Rehder, Sept. 1898.
- M-630 Same as M-629.
- M-631 *Parthenocissus quinquefolia* on *Ulmus americana*. Mass., Jamaica Plain, Harris Avenue. Photo. by A. Rehder, Sept. 1898.
- M-632 *Ulmus americana*. Mass., Jamaica Plain, Green Street. Photo. by A. Rehder, Sept. 1898.
- M-633 *Ulmus americana*. Boston. Avenue on Boston Common. Photo. by A. Rehder, Sept. 1898.
- M-634 Same as M-633.
- M-635 *Liriodendron tulipifera*. Rhode Island, Newport. Estate of G. P. Wetmore. Photo. by A. Rehder, Sept. 1898.
- M-636 *Picea glauca*. Rhode Island, Newport, Bellevue Avenue. Photo. by A. Rehder, Sept. 1898.
- M-637 *Ulmus americana*. Boston, Mass. As avenue tree on Commonwealth Ave. Photo. by A. Rehder, Sept. 1898.
- M-638 *Phellodendron japonicum*. Mass., Jamaica Plain. Grounds of Bussey Institute. Photo. by A. Rehder, March 1899.
- M-639 Harvard College - Botanic Garden. *Carya ovata*. Photo. by A. Rehder, March 1899.
- M-640 Harvard College - Botanic Garden. *Juglans nigra*. Photo. by A. Rehder, March 1899.
- M-641 Harvard College - Botanic Garden. *Fagus grandifolia*. Photo. by A. Rehder, March 1899.
- M-642 Harvard College - Botanic Garden. *Gymnocladus dioeca*. Photo. by A. Rehder, ~~at~~ March 1899.
- M-643 *Quercus bicolor*. Mass., Waverley. Photo. by A. Rehder, April 1899.
- M-644 *Quercus alba*. Mass., Waverley. Photo. by A. Rehder, April 1899.
- M-645 Same as M-644.
- M-646 Same as M-644.
- M-647 Holm Lea. Mass., Brookline. *Malus floribunda*. Photo. by A. Rehder, May 1899.

- M-648 Hunnewell Estate, Wellesley, Mass. *Kalmia latifolia*. Photo. by A. Rehder, June 1899.
- M-649 Hunnewell Estate, Wellesley, Mass. *Cladrastis lutea*. Photo. by A. Rehder, June 1899.
- M-650 Same as M-649.
- M-651 Hunnewell Estate, Wellesley, Mass. *Streptosolen Jamesonii*. Photo by
m A. Rehder, June 1899.
- M-652 Hunnewell Estate, Wellesley, Mass. *Chamaecyparis pisifera* f. *filifera*. Photo. by A. Rehder, June 1899.
- M-653 Hunnewell Estate, Wellesley, Mass. *Cornus kousa*. Photo. by A. Rehder, June 1899.
- M-654 Same as M-653.
- M-655 Same as M-653.
- M-656 Same as M-653.
- M-657 Holm Lea, Mass., Brookline. *Syringa pekinensis*. Photo. by A. Rehder, June 1899.
- M-658 Same as M-657.
- M-659 *Acer saccharum*. Mass., Jamaica Plain. Photo. by A. Rehder, June 1899.
- M-660 *Prunus salicina* var. "Burbank". New York, Rochester. Photo. by A. Rehder.
- M-661 *Prunus salicina* "Abundance". New York, Rochester. Photo. by A. Rehder, August 1899.
- M-662 *Cydonia oblonga*. New York, Rochester. In orchard. Photo. by A. Rehder, July 1899.
- M-663 *Aesculus glabra*. New York, Geneva. As a street tree. Photo. by A. Rehder, July 1899.
- M-664 *Acer platanoides*. New York, Rochester. As an avenue tree. Photo. by A. Rehder, July 1899.
- M-665 *Acer platanoides*. New York, Geneva. As a street tree. Photo. by A. Rehder, July 1899.
- M-666 *Magnolia Soulangeana*. New York, Rochester. As an avenue tree. Photo. by A. Rehder, July 1899.
- M-667 *Betula pendula* var. *dalecarlica*. New York, Rochester. Photo. by A. Rehder, July 1899.
- M-668 *Ulmus procera*. Mass., Chestnut Hill. Photo. by A. Rehder, Sept. 1899.
- M-669 Same as M-668.

~~M-667x~~

~~M-668x~~

~~M-669~~

- M-670 Holm Lea, Mass., Brookline. *Fraxinus americana*. Photo. by A. Rehder, July 1899.
- M-671 Holm Lea, Mass., Brookline. *Carya ovata*. Photo. by A. Rehder, July 1899.
- M-672 Holm Lea, Mass., Brookline. View across pond toward residence. Photo. by A. Rehder, June 1899.
- M-673 *Acer sacharinum*. New York, Geneva. Photo. by A. Rehder, 1899?
- M-674 *Populus nigra* var. *italica* (Lombardy Poplar). Michigan, Detroit. Photo. by A. Rehder, August 1899.
- M-675 Same as M-674.
- M-676 *Morus alba* f. *pendula*. Illinois, Egandale near Chicago. Photo. by A. Rehder, August 1899.
- M-677 *Lagerstroemia indica*. Illinois, Egandale, near Chicago. Photo. by A. Rehder, August 1899.
- M-678 *Catalpa speciosa*. Illinois, Chicago, Humbold Park. Photo. by A. Rehder, August 1899.
- M-679 Same as M-678.
- M-680 *Taxodium distichum*. Missouri, St. Louis, Tower Grove Park. Photo. by A. Rehder, August 1899.
- M-681 *Larix laricina*. Wisconsin, near Oconomowoc. Photo. by A. Rehder, August 1899.
- M-682 Same as M-681.
- M-683 *Gleditsia triacanthos*. Missouri, St. Louis, Forest Park. Photo. by A. Rehder, August 1899.
- M-684 *Liquidambar styraciflua*. Missouri, St. Louis, as an avenue tree in Tower Grove Park. Photo. by A. Rehder, August 1899.
- M-685 *Sorbus hybrida*. Illinois, Park Ridge, near Chicago. Photo. by A. Rehder, August 1899.
- M-686 *Quercus coccinea*. Mass., Roslindale. Photo. by A. Rehder, Nov. 1899.

- M-687 *Picea Abies*. Mass., Jamaica Plain. Bowditch estate. Photo. by A. Rehder, Nov. 1899.
- M-688 Same as M-687.
- M-689 *Juglans mandshurica*. Mass., Jamaica Plain. Grounds of Bussey Institution. Photo. by A. Rehder, Nov. 1899.
- M-690 *Ulmus americana*, Mass., Newton. Photo. by A. Rehder, Nov. 1899.
- M-691 *Acer saccharum*. Mass., Newton. As a street tree. Photo. by A. Rehder, Nov. 1899.
- M-692 Same as M-691.
- M-693 *Chamaecyparis pisifera* f. *plumosa*. Mass., Wellesley. Hunnewell estate. A. Rehder standing. Photo. ~~xxxx~~ taken for A. Rehder, Sept. 1899.
- M-694 *Picea orientalis*. Mass., Wellesley, Hunnewell estate. Photo. by A. Rehder, Sept. 1899.
- M-695 *Abies cilicica*. Mass., Wellesley. Hunnewell estate. Photo. by A. Rehder, Nov. 1899.
- M-696 *Abies homolepis*. Mass., Wellesley. Hunnewell estate. Photo. by A. Rehder, Nov. 1899.
- M-697 *Picea Maximowiczii*. Mass., Wellesley. Hunnewell estate. Photo. by A. Rehder, Nov. 1899.
- M-698 *Picea bicolor*. Mass., Wellesley. Hunnewell estate. Photo. by A. Rehder, Nov. 1899.
- M-699 *Acer saccharinum* (larger tree) and *Acer rubrum* (smaller tree). Mass., Jamaica Plain. Photo. by A. Rehder, Feb. 1900.
- M-700 Holm Lea, Mass., Brookline. *Rhododendron catawbiense* on a cold winter day. Photo. by A. Rehder, Feb. 1900.
- M-701 Holm Lea, Mass., Brookline. *Rhododendron catawbiense* on a cold winter day. Photo. by A. Rehder, Feb. 1900. (See M-707 for normal condition.)
- M-702 Holm Lea, Mass., Brookline. *Tsuga canadensis* f. *pendula*. Photo. by A. Rehder, Feb. 1900.
- M-703 *Philadelphus inodorus* L. (*Philadelphus flore albo majore inodoro* Catesby, Nat. Hist. Carol, ii, t. 84, 1743). Photo. by A. Rehder, Nov. 1900.
- M-704 *Prunus subhirtella*. Mass., Brookline. Photo. by A. Rehder, April 1900.
- M-705 *Acer platanoides*. Mass., Jamaica Plain, Fond St. almost opposite Eliot Street. To show early leafing as against *A. saccharum* at left. Photo. by A. Rehder, May 1900.
- M-706 Holm Lea, Mass., Brookline. *Nyssa sylvatica*. Photo. by A. Rehder, March 1900.

- M-707 Holm Lea, Mass., Brookline. *Rhododendron catawbiense* hybrid. Normal condition. Same shrub as shown in M-701, which shows it on a cold winter day. Photo. by A. Rehder.
- M-708 *Crataegus peregrina*. Mass., Brookline. Photo. by A. Rehder, May 1900.
- M-709 Holm Lea, Mass., Brookline. *Crataegus Douglasii*. Photo. by A. Rehder, May 1900.
- M-710 *Cedrela sinensis*. Pennsylvania, Philadelphia, Fairmount Park. Photo. by A. Rehder, June 1900.
- M-712 *Liriodendron Tulipifera*. Pennsylvania, Philadelphia. As an avenue tree. Photo. by A. Rehder, June 1900.
- M-713 *Tilia glabra*. Pennsylvania, Philadelphia. As an avenue tree. Photo. by A. Rehder, June 1900.
- M-714 *Ginkgo biloba*. Pennsylvania, Philadelphia. As an avenue tree. Photo. by A. Rehder, June 1900.
- M-714 Same as M-713.
- M-715 West-Virginia Natural Bridge. Photo. by A. Rehder, June 1900.
- M-716 Same as M-715.
- M-717 *Juniperus virginiana*. West Virginia. Near Natural Bridge. Photo. by A. Rehder, June 1900.
- M-718 Same as M-717.
- M-719 *Tsuga canadensis*. North Carolina, near Roan Mt.. In a gorge. Photo. by A. Rehder, June 1900.
- M-720 *Kalmia latifolia*. North Carolina, Roan Mt. Photo. by A. Rehder, June 1900.
- M-721 Hunnewell Estate. Mass., Wellesley. *Rhododendron "Everestianum"*. Photo. by A. Rehder, June 1900.
- M-722 Same as M-721.
- M-723 Same as M-721.
- M-724 Same as M-721.
- M-725 Same as M-721.
- M-726 Same as M-721.

- M-727 Hunnewell Estate, Mass., Wellesley. *Picea pungens*. Photo. by A. Rehder, Sept. 1900.
- M-728 Hunnewell Estate, Mass., Wellesley. *Abies concolor*. Photo. by A. Rehder, Sept. 1900.
- M-729 Hunnewell Estate, Mass., Wellesley. *Ulmus hollandica* var. *vegeta*. Photo. by A. Rehder, Sept. 1900.
- M-730 Hunnewell Estate, Mass., Wellesley. *Magnolia acuminata*. Photo. by A. Rehder, Sept. 1900.
- M-731 *Acer saccharinum*. Mass., Jamaica Plain, Roanoke Avenue. Photo. by A. Rehder, Sept. 1900.
- M-732 *Lonicera japonica* as a ground cover. *Dirca palustris* in back. Photo. by A. Rehder, Oct. 1900.
- M-733 *Araucaria araucana*. Switzerland, Villa Rocca Bell, near Locarno. Tree 13 m. tall; girth 1.22 m. Reproduced from Baum-Album der Schweiz. By A. Rehder, Nov. 1900.
- M-734 *Castanea sativa*. Switzerland, Centovalli, near Bordi. Tree 26.50 m. tall; girth 5.20 m. Reproduced from Baum-Album der Schweiz. By A. Rehder, Nov. 1900.
- M-735 *Abies alba*. Switzerland, Vaud, near St.-Gergue. Tree 31.50 m. tall; girth 6.90 m. Reproduced from Baum-Album der Schweiz. By A. Rehder, Nov. 1900.
- M-736 *Fagus sylvatica*. Switzerland, Grisons, near Flims. Reproduced from Baum-Album der Schweiz. Tree 25 m. tall; girth 5.30. By A. Rehder, Nov. 1900.
- M-737 *Pinus sylvestris*. Switzerland. Switzerland, Grisons, near Campodials. Tree 24 m. tall; girth 3.20 m. Reproduced from Baum-Album der Schweiz. By A. Rehder, Nov. 1900.
- M-738 *Larix decidua*. Switzerland, Valais, near Blitzingen. Tree 29 m. tall; girth 7.50 m. Reproduced from Baum-Album der Schweiz. By A. Rehder, Nov. 1900.
- M-739 *Sequoia gigantea*. Switzerland, Lugano. Tree 22 m. tall; girth above ground 4.56 m. Reproduced from Baum-Album der Schweiz. By A. Rehder, Nov. 1900.
- M-740 *Populus nigra*. Switzerland, Canton Schwytz, near Siebnen. From Baum-Album der Schweiz. By A. Rehder, Nov. 1900. Tree 26 m. tall; 4.50 m. girth.
- M-741 *Olea europaea*. Switzerland, Tessin, near Melide. Tree 9.50 m. tall; girth 1.30 m. near ground. From Baum-Album der Schweiz. By A. Rehder, Nov. 1900.
- M-742 Angers, France - Arboretum Allard. *Quercus Mirbeckii*. Photo. by A. Rehder, June 14, 1901.
- M-743 *Thuja occidentalis* f. *fastigiata*. Germany, Fischbach i Riesengeb. Photo. by A. Rehder, July 26, 1901.
- M-744 *Acer saccharinum*. Germany, Muskan. Park. Photo. by A. Rehder, July 24, 1901.
- M-745 *Acer saccharinum* (at right) *Cotinus coggygria* (in foreground). Germany, Muskan. Park. Photo. by A. Rehder, July 24, 1901.
- M-746 *Acer monspessulanum*. Germany, Muskan. Park. Photo. by A. Rehder, July 24, 1901.

- M-747 *Acer platanoides*. Germany, Muskan. Park. Photo. by A. Rehder, July 24, 1901.
- M-748 *Fagus sylvatica* f. *atropunicea*. Germany, Muskan. Park. Photo. by A. Rehder, July 24, 1901.
- M-749 *Quercus coccinea*. Germany, Muskan. Park. Photo. by A. Rehder, July 24, 1901.
- M-750 Same as M-749.
- M-751 Same as M-749.
- M-752 *Juglans nigra*. Germany, Muskan. Park. Photo. by A. Rehder, July 24, 1901.
- M-753 Same as M-752.
- M-754 *Carpinus betulus* f. *fastigiata*. Germany, Muskan. Park. Photo. by A. Rehder, July 24, 1901.
- M-755 *Aesculus parviflora*. Germany, Muskan. Park. Photo. by A. Rehder, July 24, 1901.
- M-756 *Cotinus coggygria*. Germany, Muskan. Park. Photo. by A. Rehder, July 24, 1901.
- M-757 Same as M-756.
- M-758 *Rhododendron catawbiense*. North Carolina, summit of Roan Mountain. Photo. by A. Rehder, June 1900.
- M-759 *Quercus robur* f. *fastigiata*. Mass., Brookline, Holm Lea. Photo. by A. Rehder, March 1902.
- M-760 Holm Lea, Mass., Brookline. *Malus coronaria*. Photo. by A. Rehder, March 1902.
- M-761 *Acer saccharinum*. Mass., Jamaica Plain, Roanoke Ave. Photo. by A. Rehder, March 1902.
- M-762 *Wistaria sinensis* climbing over tree. Mass., Jamaica Plain, near Parkman Monument. Photo. by A. Rehder, May 1902.
- M-763 *Phyllodoce empetriformis*. Reproduced. Photo. by A. Rehder, July 1902.
- M-764 *Picea jezoensis* var. *hondoensis*. Mass., Wellesley, Hunnewell estate. Photo. by A. Rehder, August 1902.
- M-765 *Picea bicolor*. Mass., Wellesley, Hunnewell estate. Photo. by A. Rehder, August 1902.
- M-766 Same as M-765.
- M-767 Same as M-765.

- M-768 Jamaica * Castleton gardens. *Chrysalidocarpus lutescens*. Photo. by A. Rehder, Feb. 1903.
- M-769 Jamaica - Castleton Gardens. *Livistona Loddigesii*? Photo. by A. Rehder, Feb. 1903.
- M-770 Jamaica - Castleton Gardens. *Caryota urens*. Photo. by A. Rehder, Feb. 1903.
- M-771 Jamaica - Castleton Gardens. *Livistona chinensis*. Photo. by A. Rehder, Feb. 1903.
- M-772 Jamaica - Castleton Gardens. *Hyophorbe amaricaulis*. Photo. by A. Rehder, Feb. 1903.
- M-773 Jamaica - Castleton Gardens. *Thrinax parviflora*. Photo. by A. Rehder, Feb. 1903.
- M-774 Jamaica - Castleton Gardens. *Cocos Romonzoffiana*. Photo. by A. Rehder, Feb. 1903.
- M-775 Jamaica - Castleton Gardens. *Livistona olivaeformis*. Photo. by A. Rehder, Feb. 1903.
- M-776 Jamaica - Castleton Gardens. *Mauritia flexuosa*. Photo. by A. Rehder, Feb. 1903.
- M-777 Jamaica - Castleton Gardens (View). Photo. by A. Rehder, Feb. 1903.
- M-778 Same as M-777.
- M-779 Jamaica - Castleton Gardens (View). *Ravenala madagascariensis* and *Chrysalidocarpus lutescens* in center. Photo. by A. Rehder, Feb. 1903.
- M-780 Jamaica - Castleton Gardens. *Euterpe oleacea*. In foreground at left *Illipe latifolia*, at right *Castilloa elastica* and *Attalea cohune* in back. Photo. by A. Rehder, Feb. 1903.
- M-781 Jamaica - Castleton Gardens. *Caryota urens*. Behind from left to right: *Artocarpus incisa*, *Erythrina umbrosa* and *Acrocomia lasiospatha*. Photo. by A. Rehder, Feb. 1903.
- M-782 *Carludovica gracilis*. Jamaica, Castleton. On river bank. Photo. by A. Rehder, Feb. 1903.
- M-783 Jamaica - Castleton Gardens. *Couroupita* sp. Photo. by A. Rehder, Feb. 1903.
- M-784 Jamaica - Hope Gardens. *Dyopsis madagascariensis*. Photo. by A. Rehder, Feb. 1903.
- M-785 Jamaica - Hope Gardens. *Pritchardia Thurstoni*. Photo. by A. Rehder, Feb. 1903.
- M-786 Jamaica - Hope Gardens. *Acrocomia lasiospatha*. Photo. by A. Rehder, Feb. 1903.

- M-787 *Acrocomia sclerocarpa*. Jamaica, Kingston. Photo. by A. Rehder, Feb. 1903.
- M-788 Same as M-787.
- M-789 Jamaica - Hope Gardens. *Catalpa bngissima*. Photo. by A. Rehder, Feb. 1903.
- M-790 Jamaica - Hope Gardens. Office building. Young *Phoenix dactylifera* in front. Photo. by A. Rehder, 1903.
- M-791 *Cercus Swartzii*. Jamaica. Photo. by A. Rehder, Feb. 1903.
- M-792 *Cercus Swartzii*. Jamaica. Hedge. Photo. by A. Rehder, Feb. 1903.
- M-793 Harvard university - Botanic garden. Mass., Cambridge. View. Photo. by A. Rehder, March 1903.
- M-794 Same as M-793.
- M-795 Same as M-793.
- M-796 Harvard university - Botanic garden. The Gray house. Photo. by A. Rehder, March 1903.
- M-797 Holm Lea, Mass., Brookline. *Malus coronaria*. Photo. by A. Rehder, May 1903.
- M-798 Holm Lea, Mass., Brookline. *Viburnum affine* var. *hypomalacum*. Photo. by A. Rehder, May 1903.
- M-799 *Magnolia obovata*. Mass., Salem. Photo. by A. Rehder, June 1903.
- M-800 *Magnolia parviflora*. Mass., Salem. Photo. by A. Rehder, June 1904.
- M-801 Same as M-800.
- M-802 Same as M-801.
- M-803 *Carya ovata*. Mass., Jamaica Plain, near Jamaica Plain gate to arboretum. Photo. by A. Rehder, Feb. 1904.
- M-804 Missouri - Botanic garden, St. Louis. *Ginkgo biloba* (narrow form) Photo. by A. Rehder, Sept. 1904.
- M-805 Missouri - Botanic garden, St. Louis. *Sorbus domestica*. Photo. by A. Rehder, Sept. 1904.
- M-806 Same as M-805.

- M-807 *Picea Breweriana* with *Abies* (?) *amabilis*. California, Siskiyou Mts. Photo. by A. Rehder, Aug. 27, 1904.
- M-808 *Picea Breweriana*. California, Siskiyou Mts. About 80 ft. tall with A. Rehder. Photo. Aug. 27, 1904.
- M-809 *Quercus Garryana*, Oregon, near Waldo. Photo. by A. Rehder, Aug. 25, 1904.
- M-810 *Pinus contorta*. California, near Crescent City. Trunk. Photo. by A. Rehder, Aug. 26, 1904.
- M-811 *Sequoia sempervirens*. California, near Crescent City. Trunk. Photo. by A. Rehder, Aug. 26, 1904.
- M-812 *Sequoia sempervirens*. California, near Crescent City. Trunks and undergrowth in forest. Photo. by A. Rehder, Aug. 26, 1904.
- M-813 *Sequoia sempervirens*. California, Crescent City. Photo. by A. Rehder, Aug. 26, 1904.
- M-814 *Thuja plicata*. British Columbia, Vancouver. Trunk with epiphytic *Gaultheria shallon*. Photo. by A. Rehder, Aug. 16, 1904.
- M-815 *Pinus contorta* var. *latifolia*. Alberta, near Banff. Photo. by A. Rehder, Aug. 9, 1904.
- M-816 Canada, Alberta - Lake Louise with forest of *Picea Engelmannii*. Photo. by A. Rehder, Aug. 10, 1904.
- M-817 *Picea glauca* var. *albertiana*. Alberta, near Banff. Photo. by A. Rehder, Aug. 9, 1904.
- M-818 Same as M-817,
- M-819 *Picea Engelmannii*. British Columbia, near Glacier. Trunk; 7 ft. girth. Photo. by A. Rehder, Aug. 12, 1904.
- M-820 Canada, British Columbia, near Glacier. Forest of *Abies lasiocarpa*, *Picea Engelmannii*, *Tsuga Mertensiana*, *T. heterophylla*, and *Pinus monticola*. (Trees with furrowed bark at right in front is *Tsuga Mertensiana*.) Photo. by A. Rehder, Aug. 13, 1904.
- M-821 *Larix Lyallii*. Alberta, Lake Agnes near Laggan. Trees up to 80 ft. Photo. by A. Rehder, Aug. 11, 1904.
- M-822 *Picea Engelmannii*. Alberta, Lake Louise, Laggan. Photo. by A. Rehder, Aug. 10, 1904.
- M-823 Canada, Alberta - Lake Louise with trees of *Picea Engelmannii* and *Abies lasiocarpa*. Photo. by A. Rehder, Aug. 10, 1904.
- M-824 Same as M-823.
- M-825 *Abies amabilis*, Wash., Mt. Rainier. Bark (trunk 7 ft. girth) Photo. by A. Rehder, Aug. 20, 1904.
- M-826 Canada, Asulkan Valley, near Glacier. Steep slopes covered with *Alnus sinuata*. Photo. by A. Rehder, Aug. 13, 1904.

- M-327 *Abies amabilis* (middle tree), girth $7\frac{1}{2}$ ft., with *A. lasiocarpa*. Washington, Mt. Rainier. Photo. by A. Rehder, August 20, 1904.
- M-328 *Abies lasiocarpa* and one smaller *A. amabilis* with J. G. Jack standing in front. Photo. by A. Rehder, August 20, 1904. Wash., Mt. Rainier.
- M-329 *Alnus rubra*. Washington, Mt. Rainier. Trunk 2' 5" in girth. Photo. by A. Rehder, August 20, 1904.
- M-330 *Picea sitchensis*. British Columbia near Vancouver. Trunk 11 ft. girth. Photo. by A. Rehder, August 18, 1904.
- M-331 British Columbia, near Glacier (View). Opening in forest chiefly *Picea Engelmannii* with ferns and *Veratrum viride*. Photo. by A. Rehder, August 12, 1904.
- M-332 Same as M-331.
- M-333 *Tsuga Mertensiana* (trunk). Smaller trunk at right is *T. heterophylla*. British Columbia, near Glacier. Photo. by A. Rehder, August 12, 1904.
- M-334 *Tsuga heterophylla*. British Columbia, near Glacier. Trunk 9 ft. girth. Photo. by A. Rehder, August 12, 1904.
- M-335 British Columbia, near Glacier. Forest chiefly of *Tsuga heterophylla*. Photo. by A. Rehder, Aug. 12, 1904.
- M-336 *Picea Engelmannii*. British Columbia, Asulkan Valley, near Glacier. Tree 95 ft. tall, with J. G. Jack in front.
- M-337 *Picea Engelmannii* (forest). Lake Louise. J. G. Jack at foot of tallest tree. Photo. by A. Rehder, Aug. 10, 1904.
- M-338 *Abies lasiocarpa*. British Columbia, Asulkan Valley, near Glacier. Photo. by A. Rehder, August 18, 1904.
- M-339 Same as M-338.
- M-340 *Larix Lyallii*. Alberta, Lake Agnes near Laggan. Photo. by A. Rehder, August 11, 1904.
- M-341 Same as M-340. (trunk)
- M-342 Same as M-340. (forest).
- M-343 *Larix Lyallii*. Alberta, Saddleback Mts., near Laggan. Photo. by A. Rehder, August 11, 1904.
- M-344 Same as M-343.
- M-345 *Quercus Garryana*. British Columbia, Vancouver Island, Victoria. Photo. by A. Rehder, August 16, 1904.
- M-346 *Salix alba*. Germany, Englischer Garden, Munich. Photo. by A. Rehder, Feb. 1905.

- M-847 6 *Acer macrophyllum*. British Columbia, Vancouver. As an avenue tree. Photo. by A. Rehder, Aug. 16, 1904.
- M-848 *Pinus Sabiniana*. California, Sierra Nevada. From photo. taken on the Sierra Nevada. Photo. by A. Rehder, Sept. 1914.
- M-849 Same as M-848.
- M-850 *Pinus ponderosa*. Arizona, near Flagstaff. Photo. by A. Rehder, July 15, 1914.
- M-851 Same as M-850.
- M-852 *Agave Parryi*. Arizona, Oak Creek, near Flagstaff. Photo. by A. Rehder, July 13, 1914.
- M-853 Same as M-852.
- M-854 *Juniperus monosperma* with *Pinus cembroides* var. *edulis*. Arizona, east of Flagstaff. Photo. by A. Rehder, July 15, 1914.
- M-855 *Juniperus monosperma*. Arizona, on mesa east of Flagstaff. Photo. by A. Rehder, July 15, 1914.
- M-856 *Quercus Havardi*. New Mexico, near Roswell, sandhills. Photo. by A. Rehder, Aug. 16, 1916.
- M-857 Same as M-856.
- M-858 *Populus tremuloides* var. *aurea*. New Mexico, Sacramento Mts., near Cloudercroft. Trunk 3'8" in girth. Tree 40-50 ft. tall. Photo. by A. Rehder, Aug. 26, 1916.
- M-859 *Populus tremuloides* var. *aurea*, with *Pinus ponderosa*, *Pseudotsuga* and *Abies concolor* in back. New Mexico, Sacramento Mts., near Cloudercroft. Photo. by A. Rehder, Aug. 26, 1916.
- M-860 Same as M-859.
- M-861 *Fraxinus velutina*. New Mexico, Sacramento Mts., near High Rolls. Tree 40 ft. tall. Photo. by A. Rehder, Aug. 23, 1916.
- M-862 *Fraxinus velutina*. New Mexico, Sacramento Mts., near High Rolls. Trunk 3'10" in girth. Photo. by A. Rehder, Aug. 23, 1916.
- M-863 *Prunus virens*. New Mexico, Sacramento Mts., near High Rolls. Tree 20 ft. tall; girth 2'3". Photo. by A. Rehder, Aug. 23, 1916.
- M-864 *Quercus novo-mexicana*. New Mexico, Sacramento Mts., near High Rolls. Trunk 5'5" in girth. Photo. by A. Rehder, Aug. 25, 1916.
- M-865 *Quercus novo-mexicana*. New Mexico, Sacramento Mts., near High Rolls. Tree 50 ft. tall. Photo. by A. Rehder, Aug. 25, 1916.
- M-866 *Juniperus utahensis* and *Pinus cembroides* var. *edulis* on hill near High Rolls, Sacramento Mts., New Mexico. Photo. by A. Rehder, Aug. 23, 1916.

- M-867 *Populus arizonica*, Arizona, near Clarkdale. Photo. by A. Rehder, Sept. 12, 1916.
- M-868 Same as M-867.
- M-869 Same as M-867.
- M-870 *Juniperus monosperma*, Arizona, near Flagstaff. Photo. by A. Rehder, Sept. 13, 1916.
- M-871 *Salix longipes*. Florida, Paradise Key. Tree 30 feet. Photo. by A. Rehder, May 2, 1920.
- M-872 *Roystonea regia*. Florida, Paradise Key. Photo. by A. Rehder, May 2, 1920. (View) Florida.
- M-873 *Cocos flexuosa*. Florida, Cotha, on Mr. H. Mehrling's house. Photo. by A. Rehder, May 6, 1920.
- M-874 *Trema mollis*. Florida, Paradise Key. Trunk. Photo. by A. Rehder, May 3, 1920.
- M-875 *Eugenia dicrana* Berg. (*Ananomis dichotoma* Sarg.) Florida, Paradise Key. Trunk of tree 30 ft. tall. Photo. by A. Rehder, May 3, 1920.
- M-876 *Lysiloma bahamensis*. Florida, Paradise Key. Trunk 2 ft. in diameter. Photo. by A. Rehder, May 3, 1920.
- M-877 Same as M-876.
- M-878 *Taxodium distichum*. Louisiana. Photo. reproduced from lantern slide. Original photo. in Library. Gift of Richardson Wright to E. H. Wilson.